



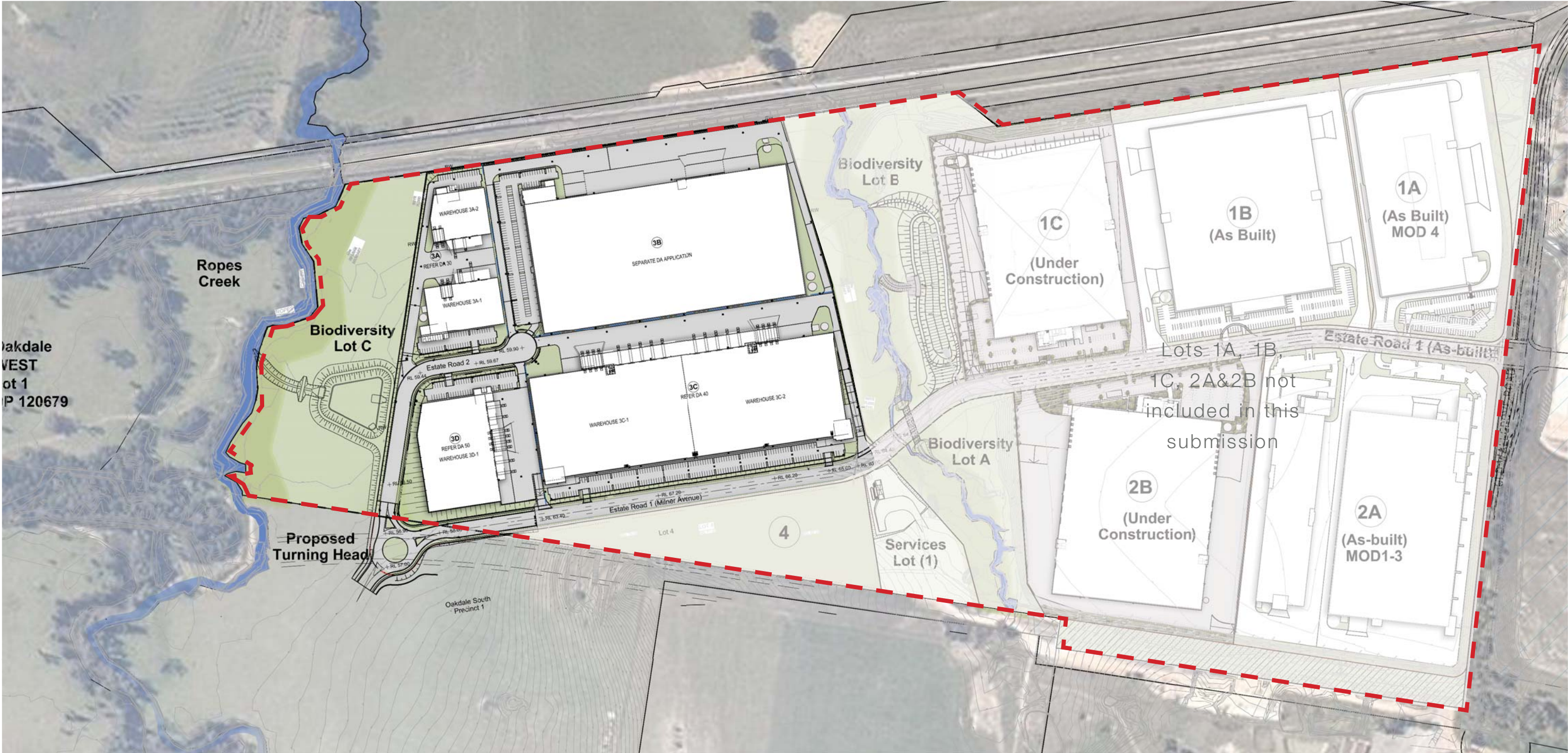
Oakdale Central Horsley Park | Lot 3  
**Landscape S96**  
February 2016



SITE IMAGE  
Landscape Architects



# Landscape Masterplan



This landscape package covers lots 3A, 3C & 3D at Oakdale Central, Horsley Park

Addressing the following issues/ areas:

- Landscape character
- Landscape scope
- Indicative plant species
- Landscape treatment to boundaries
- Landscape treatments to level changes



SITE IMAGE  
Landscape Architects

## Lot 3 Oakdale Central | Landscape S96



Client  
Architect  
Site Image Job Number

Goodman  
SBA Architects  
SS13-2656

Drawing Number  
Issue  
Date  
002  
B  
15.02.2016



Landscape Plan



This plan shows sites 3A, 3B, 3C & 3D the western most precinct within Oakdale Central. This precinct is situated between the Biodiversity lots B & C  
Landscaping will be provided to the estate road boundary as well as buffer planting along the north, south and western boundaries.



Massed grasses



Massed grasses with groups of trees



Front Entry Treatment

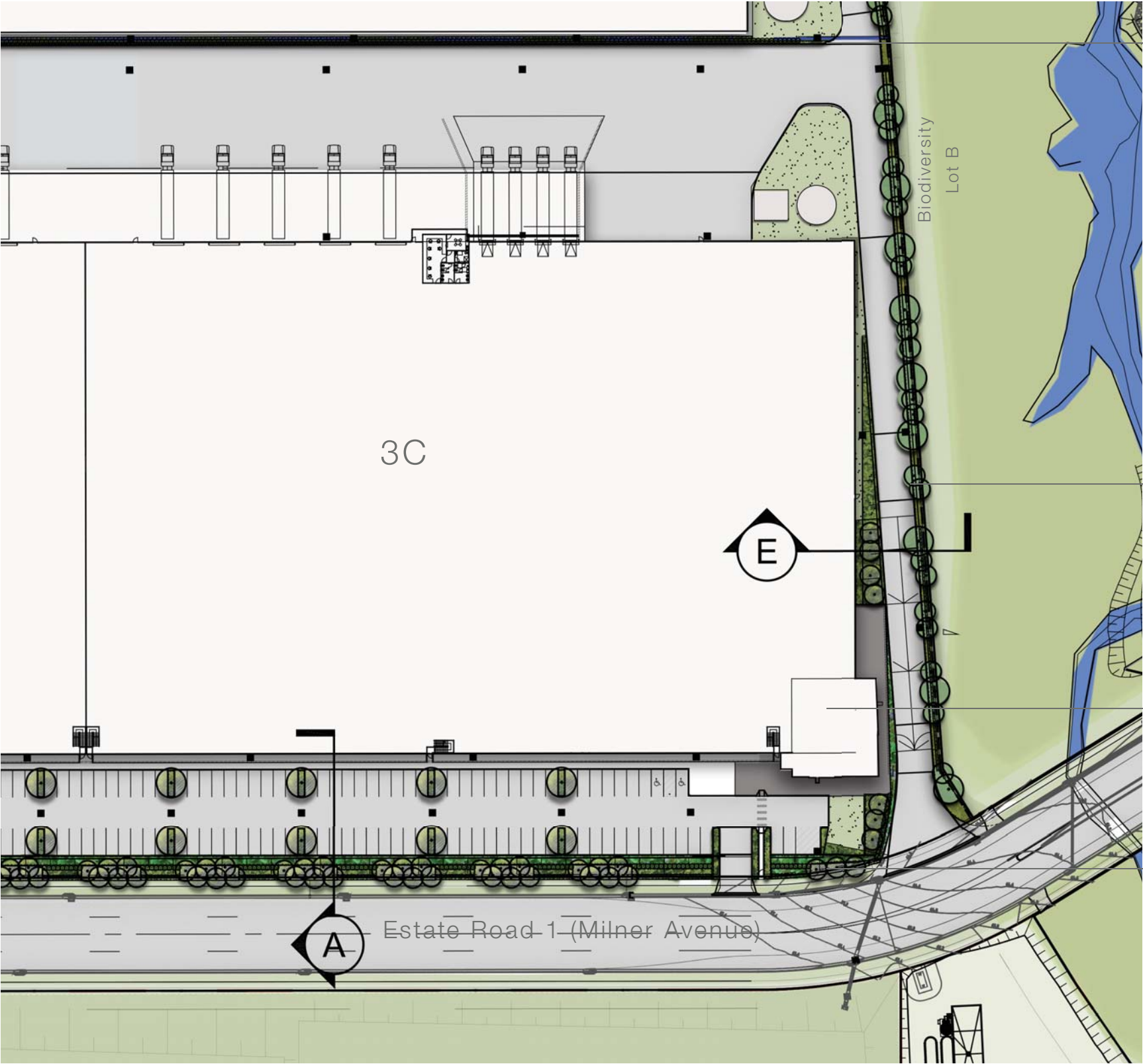




# Lot 3A - Landscape Plan



Lot 3C - Landscape Plan



Hedge and grass planting  
to 3C fenceline

Buffer planting to  
Biodiversity Lot B

Office amenity area  
Warehouse 3C-2

Frontage treatment to Estate  
road- alternating bands of  
grasses and groundcovers and  
trees in ballast

Refer following pages for sections

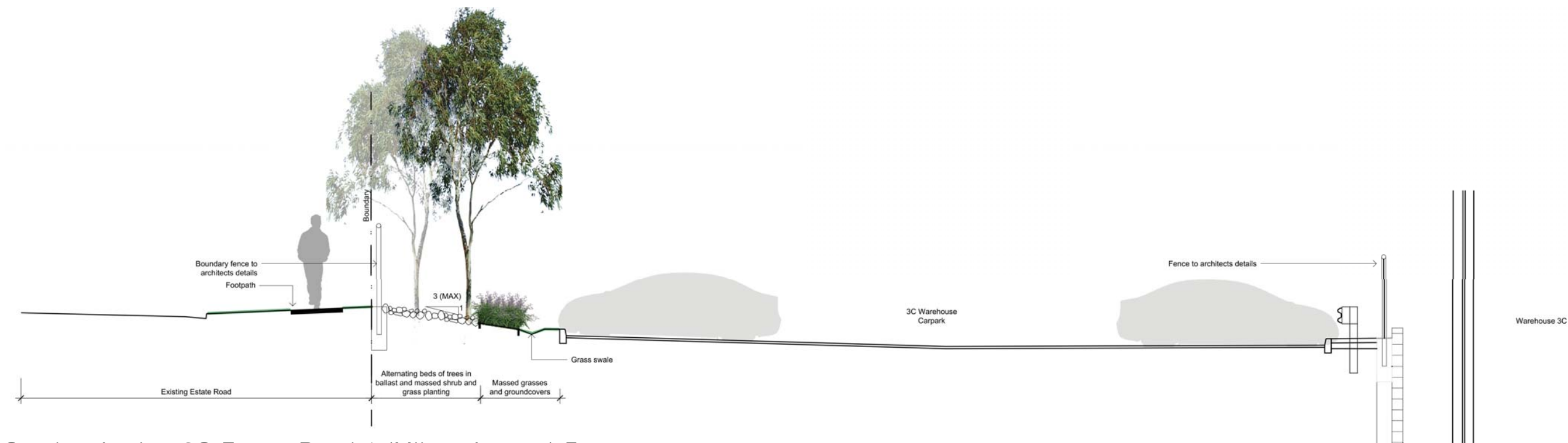


# Lot 3D & 3C - Landscape Plan

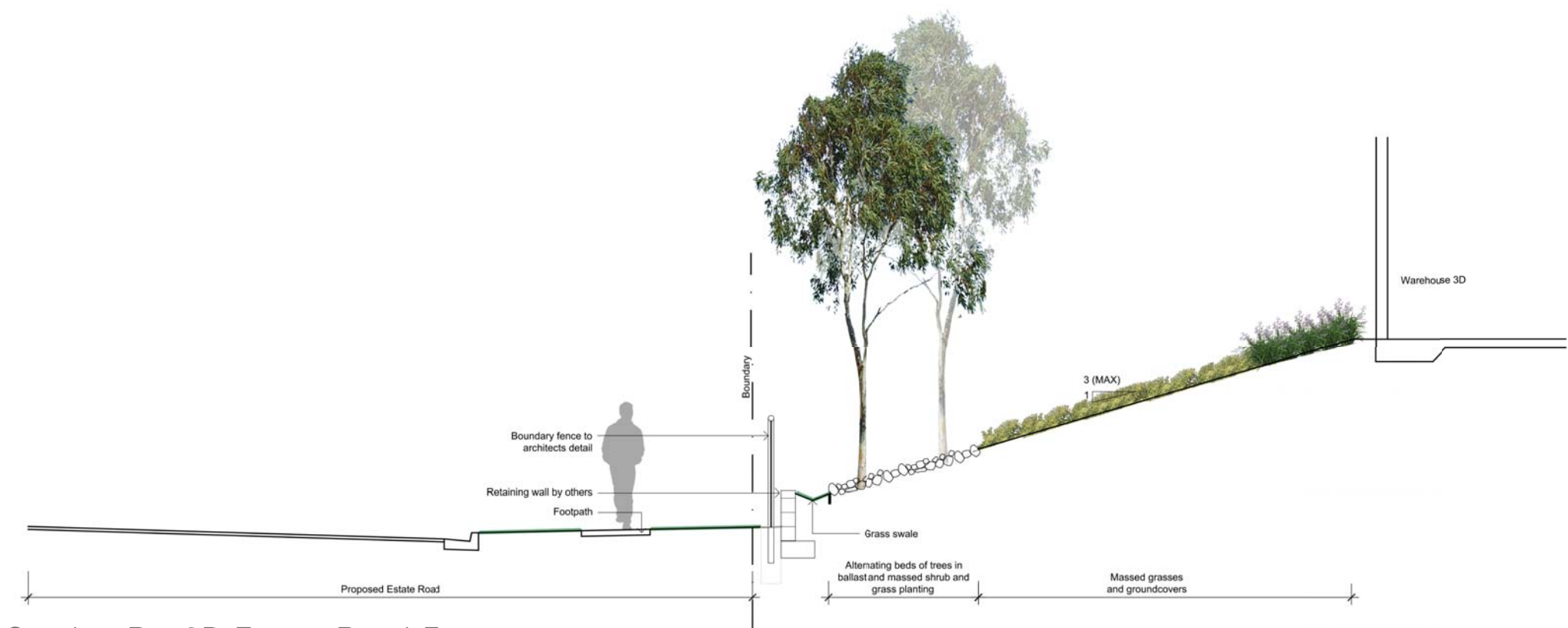


Refer following pages for sections





Section A - Lot 3C Estate Road 1 (Milner Avenue) Frontage



Section B - 3D Estate Road Frontage

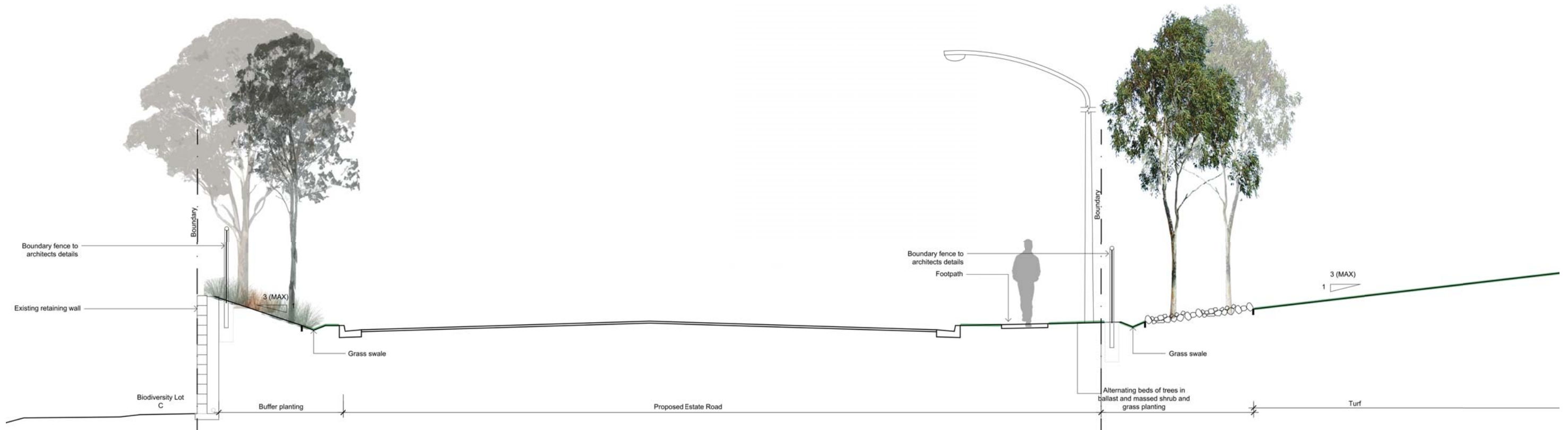


SITE IMAGE  
Landscape Architects

# Lot 3 Oakdale Central | Landscape S96

Client	Goodman	Drawing Number	007
Architect	SBA Architects	Issue	B
Site Image Job Number	SS13-2656	Date	15.02.2016





Section C - 3D Estate Road Frontage

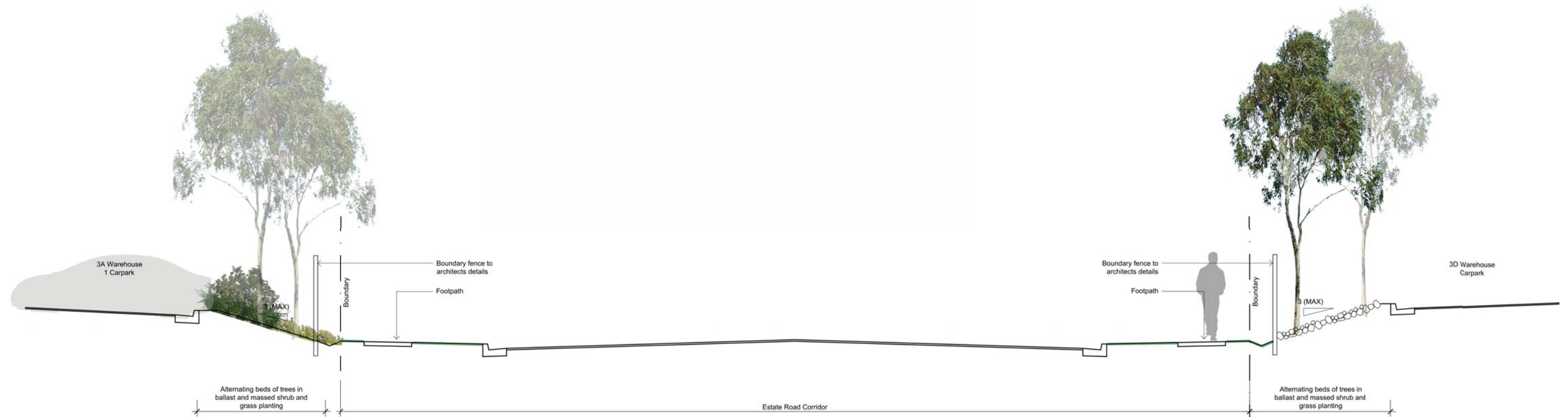


Section D - Lot 3A Biodiversity Lot C Boundary



Section E - Lot 3C Biodiversity Lot B Boundary





Section F - Estate Road 2 Frontage



# Typical Lot Frontage Treatment

This plan and section illustrate a typical lot frontage to the Estate Road. A treatment of low groundcovers, hedges and ballast rock beds directly adjoin the turf in the public domain streetscape area. Within the ballast rock beds are tree plantings in pairs at regular spacings along the property boundary. Retaining walls may be required along the car park frontages to address steep embankment and level changes. In this scenario, planting will be installed along the top of the wall and also incorporated at the base to soften wall treatments. Within the individual lots, traffic islands will be planted with large canopy trees with low grasses and groundcovers below to ensure sight lines are maintained for safety.



Section A (NTS)



Plan (NTS)



# Planting Design

Planting design is a specific response to the design requirements for the building surrounds, but also provides some performance outcomes in terms of general presentation and character.

The intention is that all buildings, where possible, be provided a comprehensive landscape setting that integrates with the public domain. The design demonstrates linkage and continuity with tree planting themes and groupings of mass planted shrub and groundcover planting areas, swathes of native grasses and accent planting.

The indicative species below have been selected for hardiness, ease of maintenance and proven ability in the area and taking into consideration indigenous species, the Cumberland Plain Woodland and other ecological habitats and communities.

The large scale of the open space areas requires an appropriate large scale response to broad groupings of densely planted gardens that generally give an impact as a single mass of sculpted foliage. The canopy of trees across the site is to have strong groupings and lines to reinforce the continuity of character.

## Indicative Planting Schedule

Botanical Name	Common Name	Mature Height (m.)	Mature Spread (m.)	Pot Size
<b>Trees</b>				
<i>Angophora floribunda</i>	Rough-barked Apple	20	8	75L
<i>Corymbia maculata</i>	Spotted Gum	15	7	75L
<i>Cupaniopsis anacardioides</i>	Tuckeroo	7	5	75L
<i>Eucalyptus amplifolia</i>	Cabbage Gum	25	8	75L
<i>Eucalyptus crebra</i>	Narrow Leaved Ironbark	15	6	25L
<i>Eucalyptus moluccana</i>	Grey Box	20	8	25L
<i>Eucalyptus tereticornis</i>	Forest Red Gum	30	10	75L
<i>Pyrus calleryana</i>	Callery Pear	11	7	75L
<i>Tristaniopsis laurina</i> 'Luscious'	Water Gum	9	8	75L
<i>Melaleuca decora</i>	White Feather Honeymyrtle	7	3	25L
<i>Melaleuca nodosa</i>	Ball Honey-myrtle	4	2.5	25L
<i>Melaleuca styphelioides</i>	Prickly Leaved Paperbark	7	3	75L
<b>Shrubs</b>				
<i>Acacia falcata</i>	Sickle Wattle	4	2	300mm
<i>Acmena smithii</i> Var Minor	Lilly Pilly	3	1.5	300mm
<i>Callistemon</i> 'Endeavour'	Bottlebrush	3	3	300mm
<i>Kunzea ambigua</i>	Tick Bush	2.5	2.5	300mm
<i>Nandina domestica</i> 'Gulf Stream'	Gulf Stream Heavenly Bamboo	.8	.8	300mm
<i>Pittosporum</i> 'Miss Muffet'	Dwarf Pittosporum	1	1.5	300mm
<i>Viburnum odoratissimum</i>	Sweet Viburnum	5	3.5	300mm
<i>Westringia glabra</i>	Violet Westringia	1	1	300mm
<b>Accent Species</b>				
<i>Doryanthus excelsa</i>	Gynea Lily	2	2	300mm
<i>Phormium tenax</i> 'Purpurea'	Purple NZ Flax	1.5	1	300mm
<b>Groundcovers and Grasses</b>				
<i>Dianella caerulea</i> 'Breeze'	Blue Flax Lily	0.4	0.4	150mm
<i>Gazania tomentosa</i>	Silver Leaf Gazania	.15	2	150mm
<i>Hardenbergia violacea</i>	Happy Wanderer Native Sarsparilla	2.5	2.5	150mm
<i>Hibbertia scandens</i>	Snake Vine	0.2	2	150mm
<i>Lomandra longifolia</i>	Mat Rush	1	0.6	150mm
<i>Lomandra longifolia</i> 'Tanika'	Matt Rush Grass	0.7	0.6	150mm
<i>Myoporum parvifolium</i>	Creeping Boobialla	0.2	1.5	150mm
<i>Pennisetum alopecuroides</i>	Swamp Foxtail	0.8	0.5	150mm
<i>Poa labillardieri</i>	Tussock Grass	0.8	0.5	150mm
<i>Themeda australis</i>	Kangaroo Grass	0.8	0.3	150mm
<i>Trachelospermum jasminoides</i>	Star Jasmine	0.2	0.5	150mm



Corymbia maculata



Eucalyptus crebra



Tristaniopsis laurina 'Luscious'



Doryanthus excelsa



Cupaniopsis anacardioides



Pyrus calleryana



Myoporum parvifolium



Nandina domestica 'Gulf Stream'



Dianella caerulea 'Breeze'



Phormium tenax 'Purpurea'



Pennisetum alopecuroides



Westringia fruticosa



Gazania tomentosa