



27 November 2013

Chris Ritchie
Manager - Industry
NSW Department of Planning & Infrastructure
PO Box 39
SYDNEY NSW 2001

EMAILED: pascal.vandewalle@planning.nsw.gov.au

Your Reference: SSD 6078
Our Reference (TRIM): OUT13/35254

Dear Mr Ritchie

Re: Warehouse and Distribution Facilities, Oakdale Central (SSD 6078) – Notice of Exhibition

Thank you for the opportunity to provide advice on the above matter. This is a response from the NSW Department of Trade & Investment (DTIRIS) – Mineral Resources Branch (MRB). The Department of Primary Industries, incorporating advice from Agriculture, Fisheries and Forests NSW may respond separately.

As previously noted the subject site is adjacent to Mining Lease (ML) 1636 held by CSR Building Products Limited (PGH Bricks and Pavers) for the extraction of structural clay to supply their co-located brickworks (Figure 1). The site is also adjacent to Austral Brick's Horsley Park Brick Plant. The subject area is partially within the transition area (blue area - Figure 1 and formally referred to as a 'buffer zone') of the operations.

As part of consultations between MRB and the proponent's (Goodman Property Services) consultants (McKenzie Group), MRB contacted both Austral and PGH regarding the proposed development. Neither company expressed concerns relating to the project. Therefore MRB considers that the proposed development will not restrict access to, or sterilise the remaining resources and it should not significantly impact the current operations at either site. As such, MRB has no further issues regarding the proposed development at this stage.

Geoscience Information Services

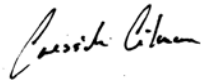
MRB has a range of online data available on line through the following website address:
<http://www.resources.nsw.gov.au/geological/online-services>

This site hosts a range of data to enable research into exploration, land use and general geoscience topics. Additionally, the location of exploration and mining titles in NSW may be accessed by the general public using the following online utilities:

1. **MinView** allows on-line interactive display and query of exploration tenement information and geoscience data. It allows spatial selection, display and download of geological coverages, mineral deposits and mine locations, geophysical survey boundaries, drillhole locations, historical and current exploration title boundaries and other spatial datasets of New South Wales. This online service is available at:
<http://www.resources.nsw.gov.au/geological/online-services/minview>
2. **NSW Titles** enables the public to access and view frequently updated titles mapping information across NSW. This online service is available at:
<http://nswtitles.minerals.nsw.gov.au/nswtitles/>

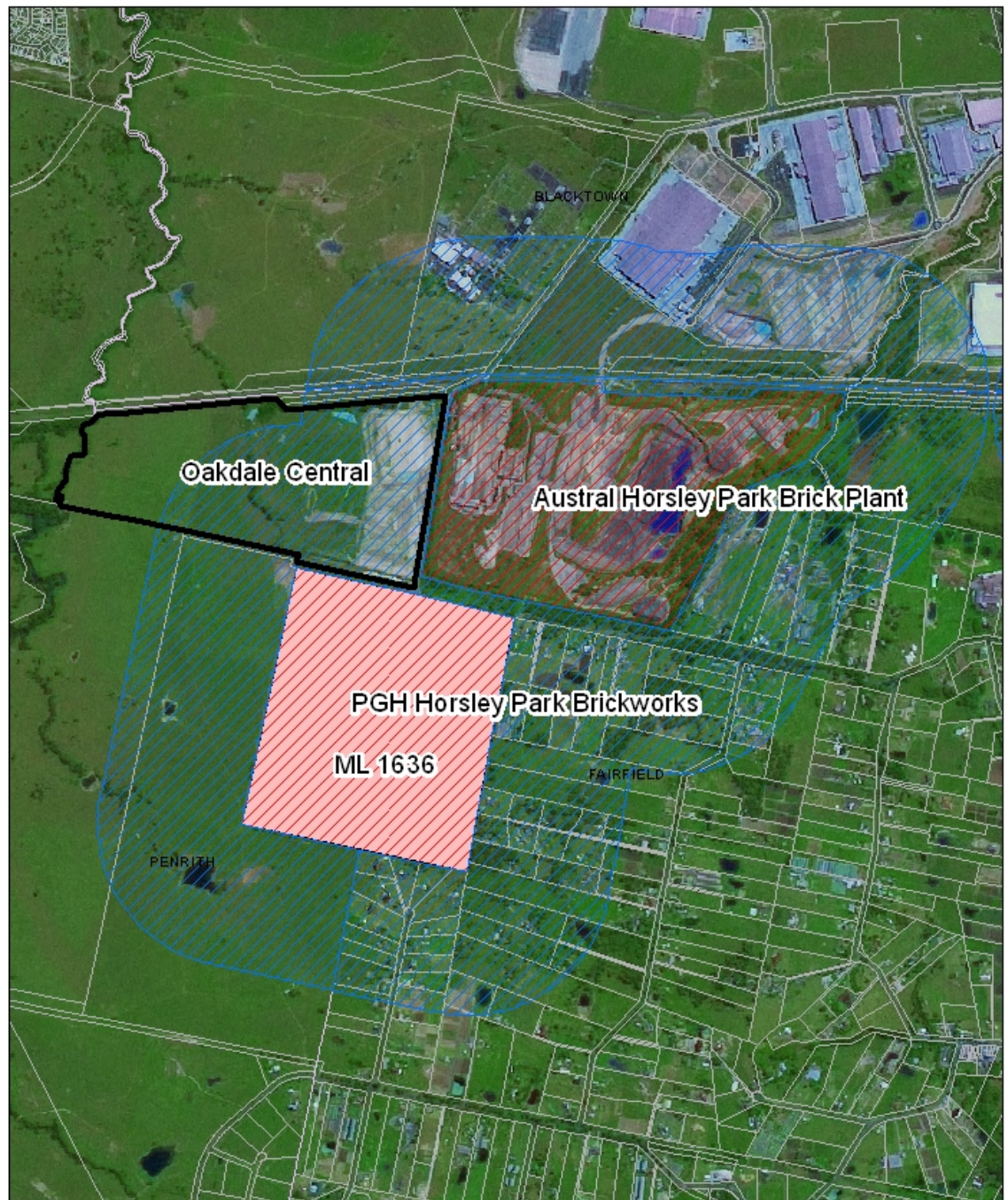
Queries regarding the above information, and future requests for advice in relation to this matter, should be directed to the MRB Land Use team at landuse.minerals@industry.nsw.gov.au.

Yours sincerely



Cressida Gilmore
Team Leader Land Use

Figure 1: Oakdale Central, Horsley Park






Path: G:\Geosurvey\MINLU\MINLU_Landuse\LU_ARCGIS\USERS\Geoscience_SDE_VECTOR_View_20130819_Geos4v10.mxd



0 187.5 375 750 1,125 1,500 Meters

SPOT5 Copyright: CNES 2008

Legend

-  Identified Resource
-  Transition Area
-  Current Mineral Titles

Date: 17/09/2013