



Sydney Olympic Park  
4 Murray Rose Avenue

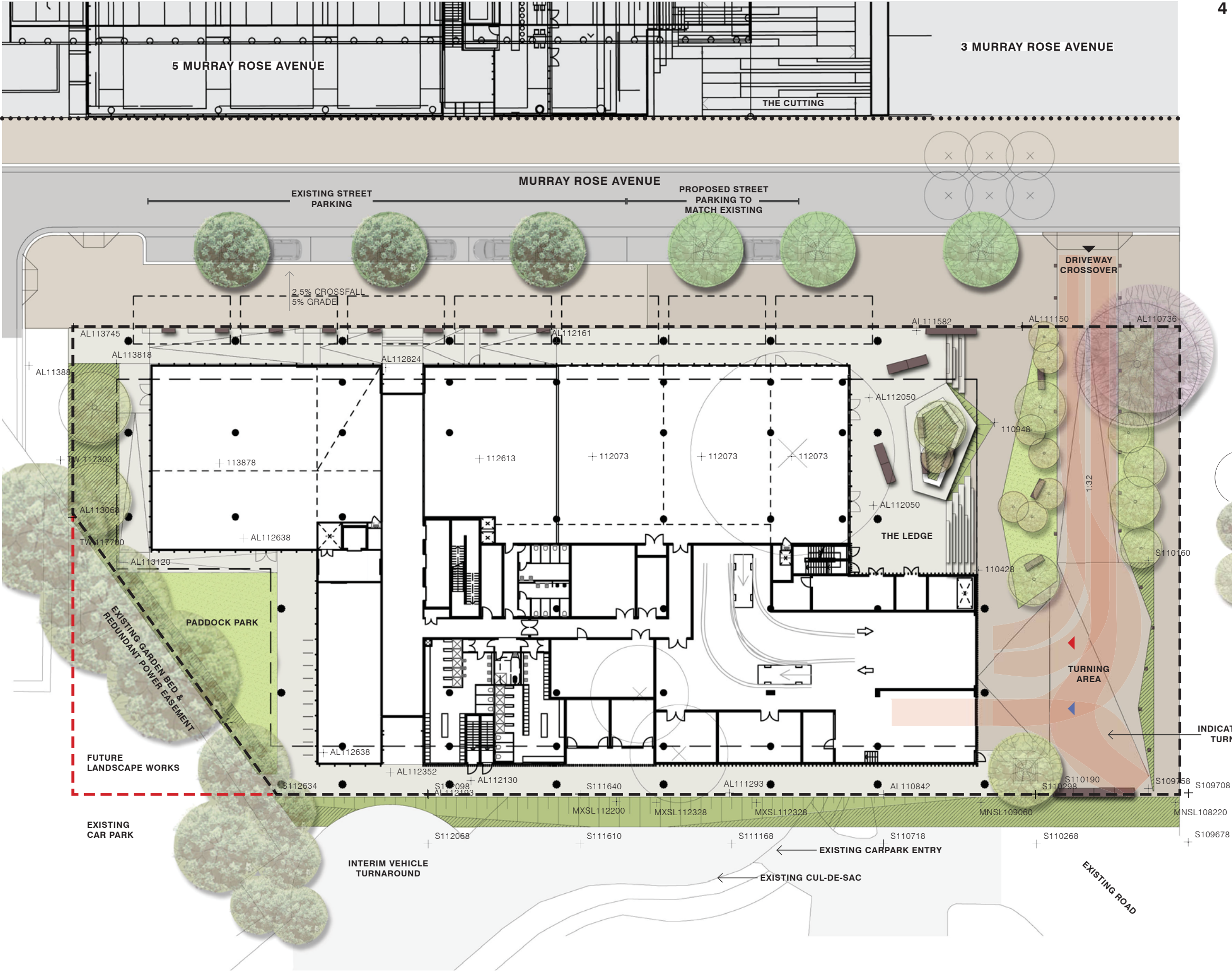
## LANDSCAPE CONCEPT DESIGN

**CLIENT:** GPT Group

**PROJECT MANAGER:** Lend Lease

**ARCHITECT:** Turner

4 Murray Rose Landscape Plan



- 4 Murray Rose site boundary
- Future 4 Murray Rose site boundary
- Existing Trihex paving
- Proposed Trihex Paving to match existing
- Pavement to building skirt and colonnades
- Tall shrub screen planting
- Low native planting
- Planted embankment
- Lawn
- Bollards
- Bench Seating
- Ledge Platform
- Terraced bleacher seating and stairs
- Street tree grates
- Carpark entry
- Loading dock entry

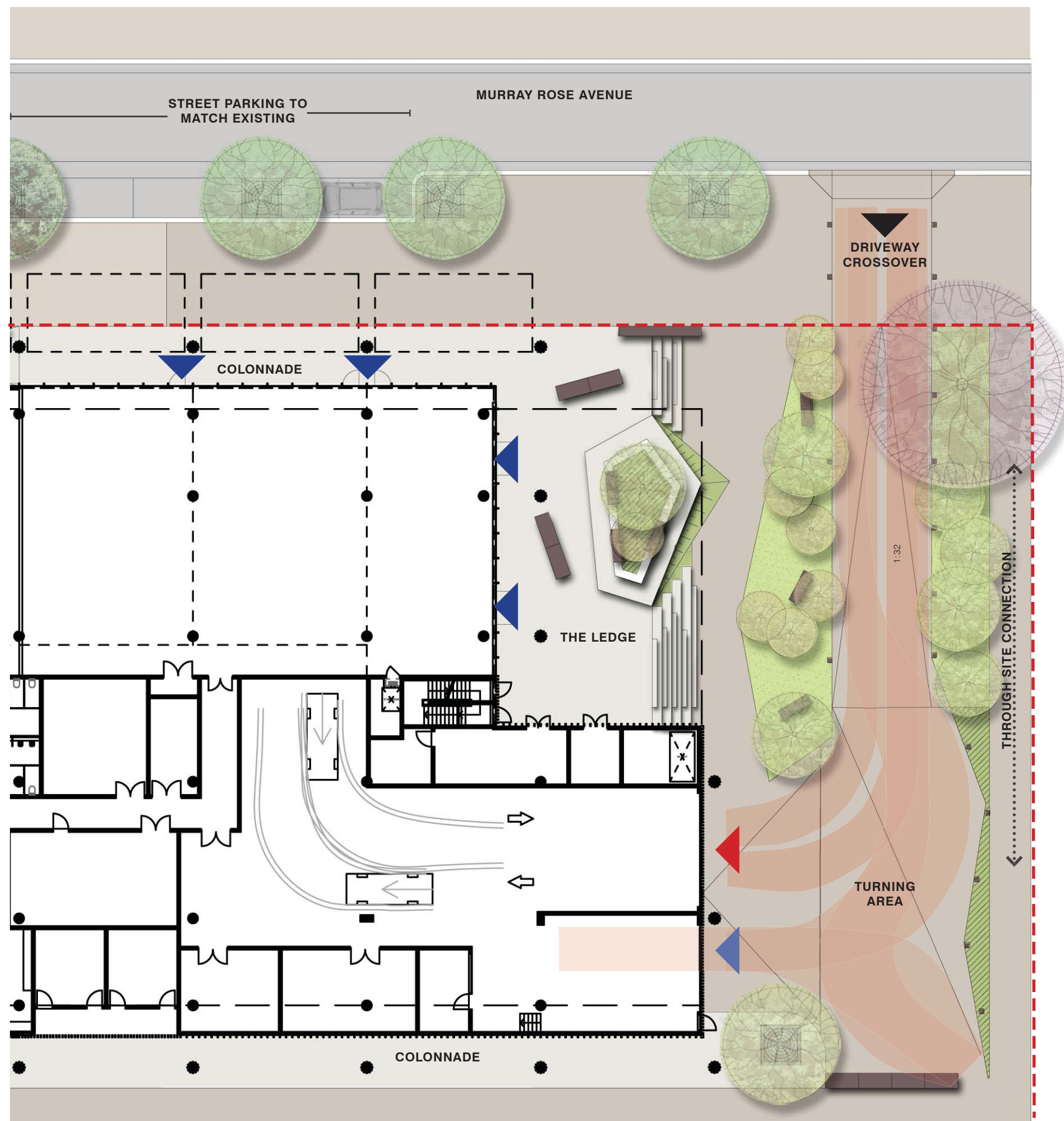
- Existing trees to be removed
- Existing Brush Box street planting
- Existing Eucalypt panting
- Proposed Brush Box planting
- Proposed trees
- Proposed feature tree

- MNSL Minimum SOPA Level
- MXSL Maximum SOPA Level
- S SOPA level
- AL Architect Level



Client <b>GPT</b> The GPT Group THE GPT GROUP Level 52, MLC Centre 19 Martin Place Sydney, NSW 2000 02 82393555		Project Manager <b>Lend Lease</b> LEND LEASE Project Management & Construction (Australia) 30 The Bond, 30 Hickson Road Millers Point, NSW 2000 02 9236 6111	Architect <b>turner</b> L1 410 Crown Street Surry Hills NSW 2010 Australia t: +61 2 8668 0000	Landscape Architect <b>turf</b> turf design studio pty ltd 95 Kingsway, Cronulla NSW 2230 p: +61 2 9527 3380   f: +61 2 9527 2307 95 e: sydney@turfdesign.com	Project <b>Landscape Report</b> 4 Murray Rose Avenue Sydney Olympic Park	Drawing Title <b>LANDSCAPE PLAN</b>	Project No. <b>1311</b> Scale <b>1:400 @ A3</b> Dwg Status <b>Concept Design</b>	Dwg No. <b>LA2</b> Date <b>10 June 2014</b>	Revision <b>D</b>
---	--	---	---	--	---	--	---	--	----------------------





## The Ledge

'The Ledge' builds on the surrounding park family of the Rim Park, The Cutting, and The Chase, and compliments the broader site language through its reference to the Brickpit's many shelves and ledges. Layers of elements in the landscape form a terrain of crevices, junctions and platforms. The 'Ledge' is amplified through the inclusion of a 150mm raised platform that straddles the elongated stair case and bleacher seating. Here users can reside and relax with perched views under the canopy of shade trees. A planted embankment transitions the ledge down to the lower pavement cutting through the stair flight revealing intersection between the extruded forms. Native grasses, sedges and rushes will be scattered on the ledge, with small shade trees in island planting.

A single feature tree is positioned at the corner of 4 Murray Rose, with lawn spaces characterised by offset edges formed from the Ledge morphology with native planting.



Client

**GPT**  
The GPT Group

THE GPT GROUP  
Level 52, MLC Centre 19 Martin Place  
Sydney, NSW 2000  
02 82393555

Project Manager

**Lend Lease**

LEND LEASE Project Management &  
Construction (Australia)  
30 The Bond, 30 Hickson Road  
Millers Point, NSW 2000  
02 9236 6111

Architect

**turner**

L1 410 Crown Street Surry Hills NSW 2010 Australia t: +61 2 8668 0000

Landscape Architect

**turf**

turf design studio pty ltd  
95 Kingsway, Cronulla NSW 2230  
p: +61 2 9527 3380 | f: +61 2 9527 2307 95  
e: sydney@turfdesign.com

Project

**Landscape Report**  
4 Murray Rose Avenue  
Sydney Olympic Park

Drawing Title

**THE LEDGE  
DETAIL PLAN**

Project No.

**1311**

Dwg No.

**LA3**

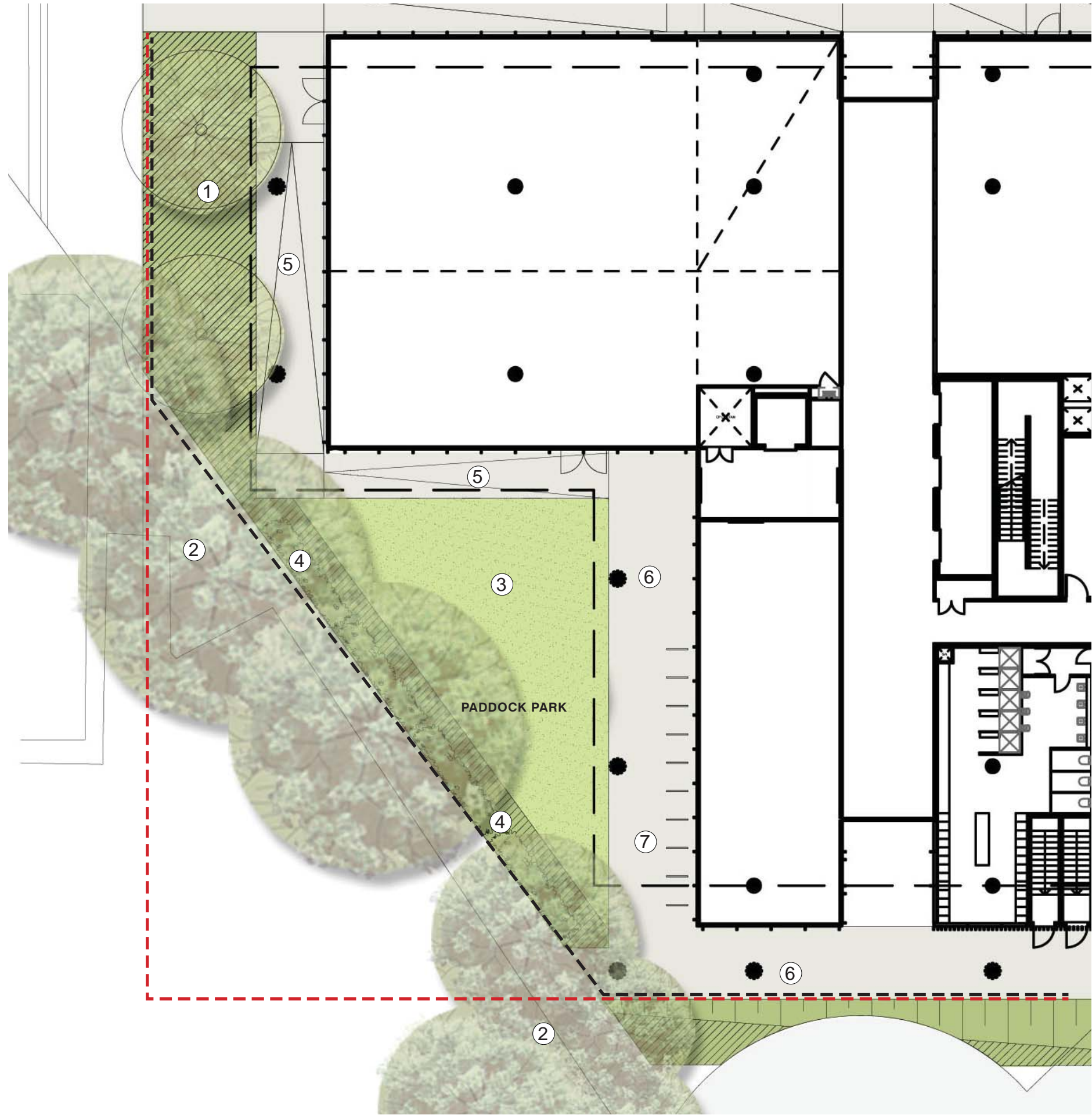
Revision

**D**

Scale **1:200 @ A3**

Date **10 June 2014**

Dwg Status **Concept Design**



**Paddock Park**

Paddock Park will provide a simple planted ground plane on which the new building will reside. New planting and lawn will be situated between the property boundary and the new building skirt connection paths.


Understorey planting will generally be a maximum of 1m high to maintain views and safety, with the exception of tall shrub screen planting to the adjacent 5 Parkview Drive loading dock / car park.

The existing eucalypt planting will be retained along the boundary with 2 new Eucalypts planted toward the corner of Murray Rose Avenue to mask building bulk and scale.

Planting will consist of hardy low water use indigenous species.

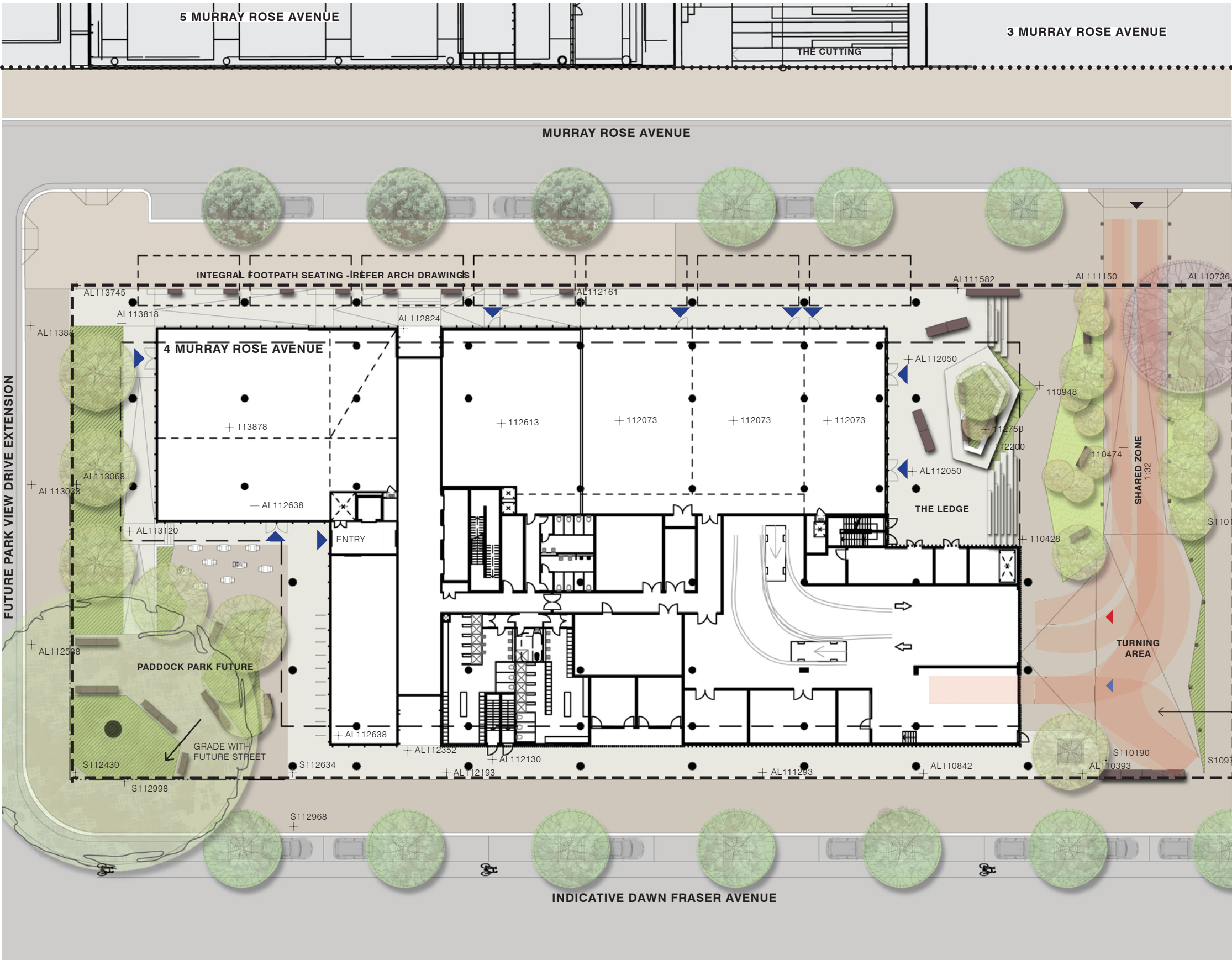
- 1 Proposed trees and understory planting
- 2 Existing Eucalypt planting along existing boundary
- 3 Open lawn breakout space
- 4 Tall shrub screen planting along site boundary
- 5 1:20 graded access paths
- 6 Building colonnade
- 7 Bicycle parking



<div>Client</div> <div><div>THE GPT GROUP Level 52, MLC Centre 19 Martin Place Sydney, NSW 2000 02 82393555</div></div>	<div>Project Manager</div> <div><div>LEND LEASE Project Management &amp; Construction (Australia) 30 The Bond, 30 Hickson Road Millers Point, NSW 2000 02 9236 6111</div></div>	<div>Architect</div> <div><div>L1 410 Crown Street Surry Hills NSW 2010 Australia t: +61 2 8668 0000</div></div>	<div>Landscape Architect</div> <div><div>turf design studio pty ltd 95 Kingsway, Cronulla NSW 2230 p: +61 2 9527 3380 f: +61 2 9527 2307 95 e: sydney@turfdesign.com</div></div>	<div>Project</div> <div>Landscape Report 4 Murray Rose Avenue Sydney Olympic Park</div>	<div>Drawing Title</div> <div>PADDOCK PARK DETAIL PLAN</div>	<div>Project No.</div> <div>1311</div>	<div>Dwg No.</div> <div>LA4</div>	<div>Revision</div> <div>D</div>
						<div>Scale</div> <div>1-200 @ A3</div>	<div>Date</div> <div>10 June 2014</div>	
						<div>Dwg Status</div> <div>Concept Design</div>		



4 Murray Rose Future Landscape Plan

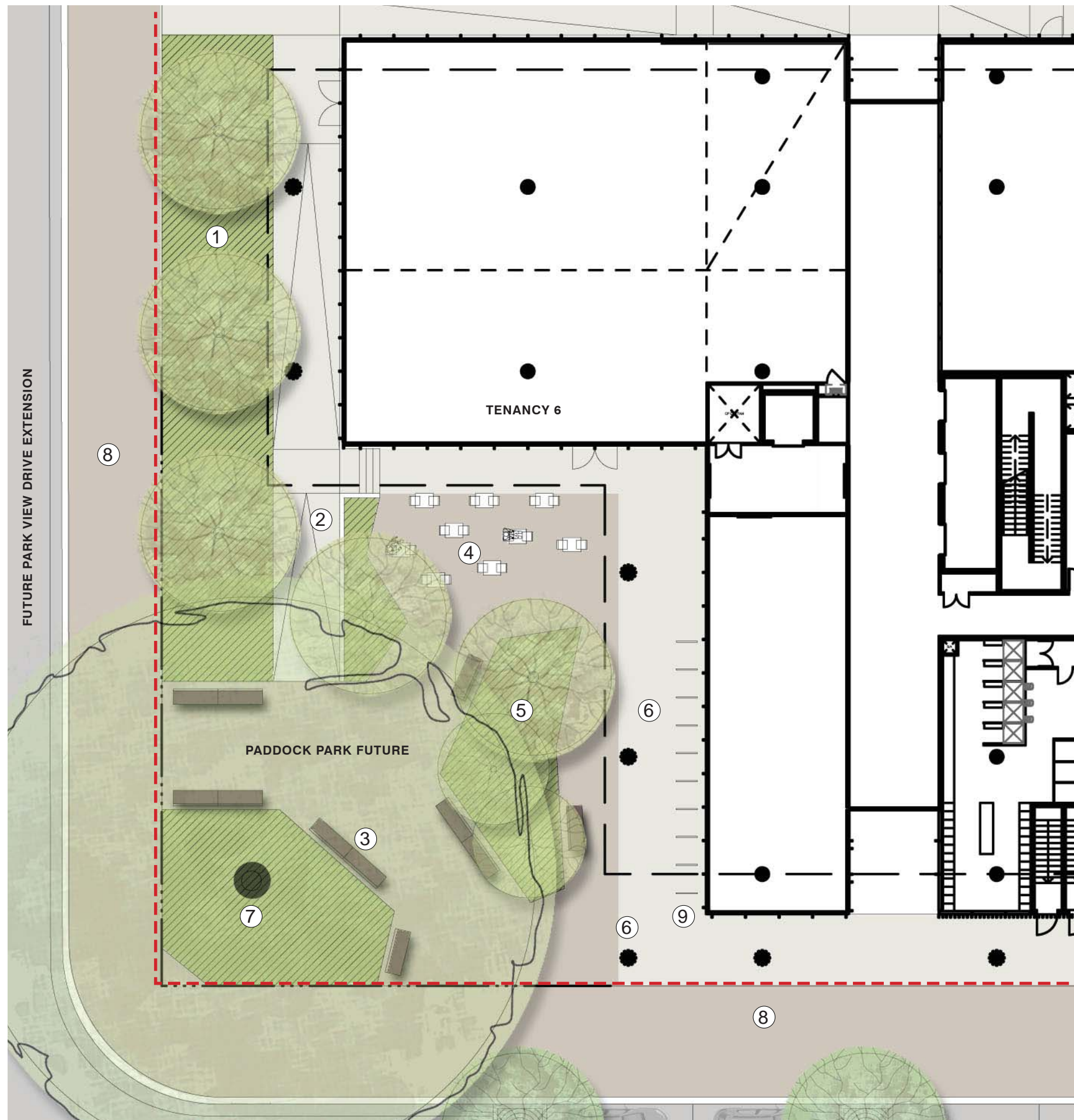


- Future 4 Murray Rose Site Boundary
- Existing Trihex Paving
- Proposed Trihex Paving to match existing
- Pavement to building skirt and colonnades
- Low Native Planting
- Planted Embankment
- Lawn
- Bollards
- Bench Seating
- Ledge Platform
- Terraced bleacher seating and stairs
- Tree Grates in road / pavement
- Carpark Entry
- Loading Dock Entry
- Building Entry
- Existing Brush Box Street Planting
- Proposed Brush Box Planting
- Proposed trees
- Proposed Feature Tree
- Proposed Feature Tree
- S SOPA Level
- AL Architect Level



Client <b>GPT</b> The GPT Group THE GPT GROUP Level 52, MLC Centre 19 Martin Place Sydney, NSW 2000 02 82393555		Project Manager <b>Lend Lease</b> LEND LEASE Project Management & Construction (Australia) 30 The Bond, 30 Hickson Road Millers Point, NSW 2000 02 9236 6111	Architect <b>turner</b> L1 410 Crown Street Surry Hills NSW 2010 Australia t: +61 2 8668 0000	Landscape Architect <b>turf</b> turf design studio pty ltd 95 Kingsway, Cronulla NSW 2230 p: +61 2 9527 3380   f: +61 2 9527 2307 95 e: sydney@turfdesign.com	Project <b>Landscape Report</b> 4 Murray Rose Avenue Sydney Olympic Park	Drawing Title <b>LANDSCAPE PLAN</b> <b>FUTURE</b>	Project No. <b>1311</b> Scale <b>1-400 @ A3</b> Dwg Status <b>Concept Design</b>	Dwg No. <b>LA5</b> Date <b>10 June 2014</b>	Revision <b>D</b>
---	--	---	---	--	---	---	---	--	----------------------





## Paddock Park Future

Paddock Park will be completed when the surrounding planned road networks are fully realised. The park itself will provide a strong corner presence with reference to the old stock holding yards that once covered the site.

A feature shade tree will mark the corner and establish an 'umbrella' for the park and adjacent street corner helping to modify extreme temperatures.

The park will grade gently toward the east. A new pathway will be installed to link the building perimeter path directly to the park.

Generous pathways are provided along key desire lines to provide free movement through the space and connect with building entries. Generous provision of seating and bicycle parking provides amenity and will activate the space.

Low native planting and tall, slender-trunked Eucalypts create rooms within the space, and provide other benefits of WSUD, shade, thresholds, and masking building mass.

Planting edges spatially define the Tenancy 6 breakout space and thoroughfare beyond.

- 1 Tree and understory planting to future Parkview Drive frontage
- 2 New pathway access to the park
- 3 Seating with backrests and side supports
- 4 Tenancy 6 breakout space framed by planting
- 5 Central planter defines a series of seating areas and delineates desire lines
- 6 Building colonnade
- 7 Signature tree marking the corner of the site and reflecting the former paddocks. Shade tolerant understory
- 8 Proposed Trihex paving to match existing
- 9 Bicycle parking



Client  
**GPT**  
The GPT Group  
Level 52, MLC Centre 19 Martin Place  
Sydney, NSW 2000  
02 82393555

Project Manager  
**Lend Lease**  
LEND LEASE Project Management &  
Construction (Australia)  
30 The Bond, 30 Hickson Road  
Millers Point, NSW 2000  
02 9236 6111

Architect  
**turner**  
L1 410 Crown Street Surry Hills NSW 2010 Australia t: +61 2 8668 0000

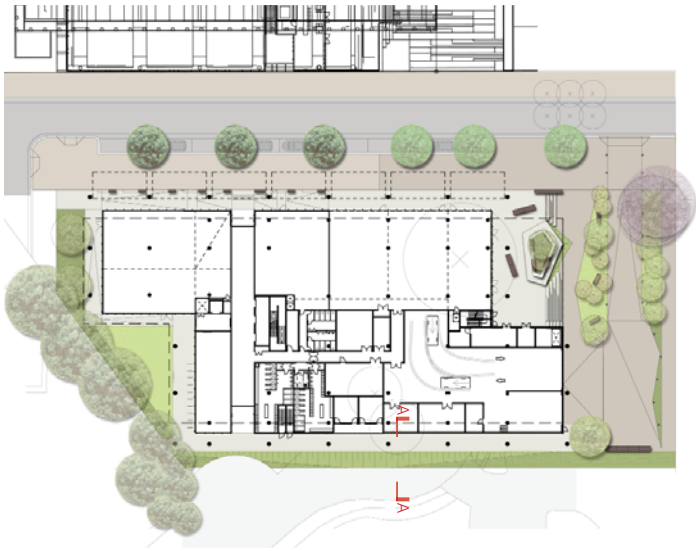
Landscape Architect  
**turf**  
turf design studio pty ltd  
95 Kingsway, Cronulla NSW 2230  
p: +61 2 9527 3380 | f: +61 2 9527 2307 95  
e: sydney@turfdesign.com

Project  
**Landscape Report**  
4 Murray Rose Avenue  
Sydney Olympic Park

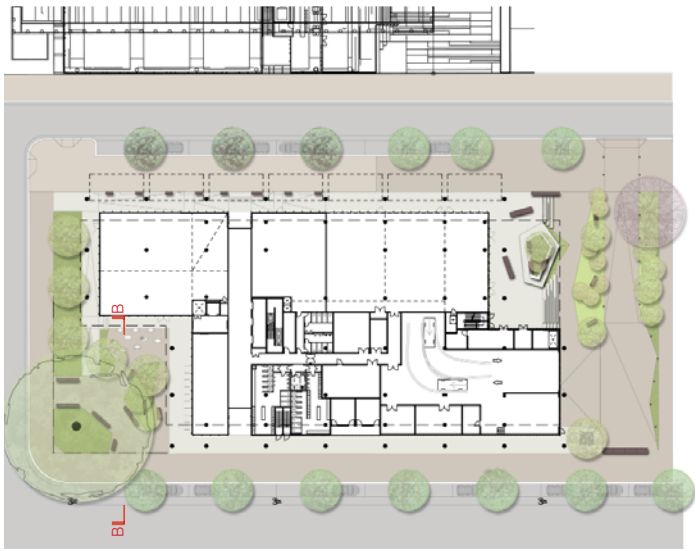
Drawing Title  
**PADDOCK PARK**  
**FUTURE DETAIL PLAN**

Project No. <b>1311</b>	Dwg No. <b>LA6</b>	Revision <b>D</b>
Scale <b>1:200 @ A3</b>	Date <b>10 June 2014</b>	
Dwg Status <b>Concept Design</b>		









A-A EASTERN BOUNDARY SECTION

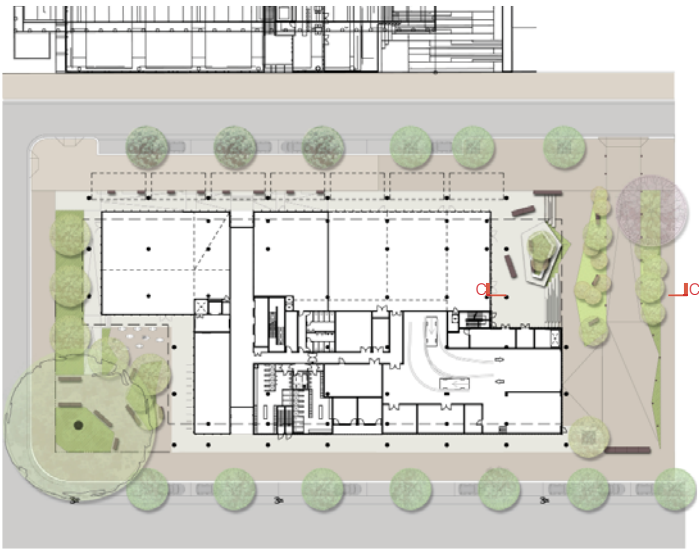


B-B PADDOCK PARK (FUTURE) SECTION

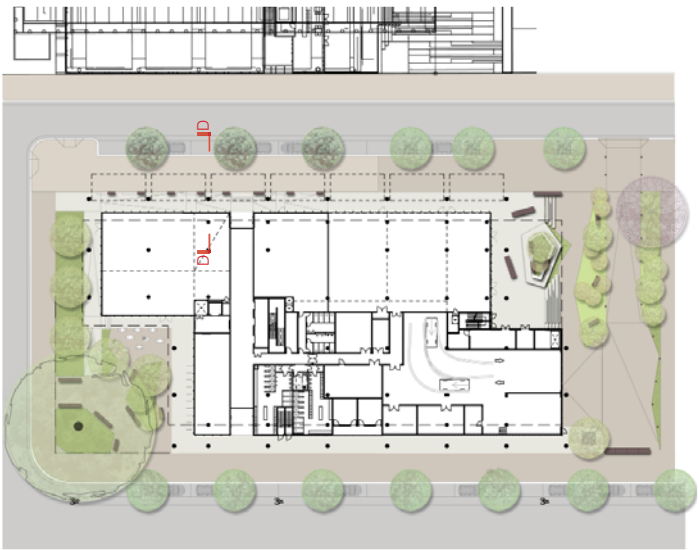


<div>Client</div> <div><div>THE GPT GROUP Level 52, MLC Centre 19 Martin Place Sydney, NSW 2000 02 82393555</div></div>	<div>Project Manager</div> <div><div>LEND LEASE Project Management &amp; Construction (Australia) 30 The Bond, 30 Hickson Road Millers Point, NSW 2000 02 9236 6111</div></div>	<div>Architect</div> <div><div>L1 410 Crown Street Surry Hills NSW 2010 Australia t: +61 2 8668 0000</div></div>	<div>Landscape Architect</div> <div><div>turf design studio pty ltd 95 Kingsway, Cronulla NSW 2230 p: +61 2 9527 3380   f: +61 2 9527 2307 95 e: sydney@turfdesign.com</div></div>	<div>Project</div> <div>Landscape Report 4 Murray Rose Avenue Sydney Olympic Park</div>	<div>Drawing Title</div> <div>SECTIONS A-B</div>	<div>Project No.</div> <div>1311</div>	<div>Dwg No.</div> <div>LA7</div>	<div>Revision</div> <div>D</div>
						<div>Scale</div> <div>1-100 @ A3</div>	<div>Date</div> <div>10 June 2014</div>	
						<div>Dwg Status</div> <div>Concept Design</div>		








C-C 'THE LEDGE' SECTION



D-D MURRAY ROSE FRONTAGE SECTION



<div>Client</div> <div><div><div><div>GPT</div><div>The GPT Group</div></div><div><div>THE GTP GROUP</div><div>Level 52, MLC Centre 19 Martin Place</div><div>Sydney, NSW 2000</div><div>02 82393555</div></div></div></div>	<div>Project Manager</div> <div><div><div><div></div><div>LEND LEASE Project Management &amp; Construction (Australia)</div><div>30 The Bond, 30 Hickson Road</div><div>Millers Point, NSW 2000</div><div>02 9236 6111</div></div></div></div>	<div>Architect</div> <div><div><div><div></div><div>L1 410 Crown Street Surry Hills NSW 2010 Australia</div><div>t: +61 2 8668 0000</div></div></div></div>	<div>Landscape Architect</div> <div><div><div><div></div><div>turf design studio pty ltd</div><div>95 Kingsway, Cronulla NSW 2230</div><div>p: +61 2 9527 3380   f: +61 2 9527 2307 95</div><div>e: sydney@turfdesign.com</div></div></div></div>	<div>Project</div> <div><div>Landscape Report</div><div>4 Murray Rose Avenue</div><div>Sydney Olympic Park</div></div>	<div>Drawing Title</div> <div><div>SECTIONS C-D</div></div>	<div>Project No.</div> <div>1311</div>	<div>Dwg No.</div> <div>LA8</div>	<div>Revision</div> <div>D</div>
						<div>Scale</div> <div>1-100 @ A3</div>	<div>Date</div> <div>10 June 2014</div>	
						<div>Dwg Status</div> <div>Concept Design</div>		





TRIHEX PAVING TO MATCH EXISTING (P9)



SF02



SF05A



PRECEDENT CUSTOM SEATING WITH BACK RESTS AND SIDE SUPPORTS FOR THE LEDGE RAISED PLANTER (CF1)

Urban elements & Materials

The proposed materials are generally in accordance with Urban Element Design Manual (UEDM) 2009, including the following standard elements:

- Trihex 80mm interlocking precast pavers (P9)
- Free-standing timber bench seat with armrests (SF02)
- Platform bench seat - 900mm (SF05a)

In addition to these standard elements, custom seating with backrests and side supports (CF1) is proposed to The Ledge around the raised planter (as shown in the drawings). This seating will be detailed in accord with SF02 seating to ensure consistency the suite of furniture elements. This seating type is required to satisfy the need for seating with backrests and side supports on The Ledge.

Backrests to other benches on The Ledge are not considered appropriate, as their location requires bidirectional use. SF05a seating will be specified here.



Client  
**GPT**  
The GPT Group  
THE GTP GROUP  
Level 52, MLC Centre 19 Martin Place  
Sydney, NSW 2000  
02 82393555

Project Manager  
**Lend Lease**  
LEND LEASE Project Management &  
Construction (Australia)  
30 The Bond, 30 Hickson Road  
Millers Point, NSW 2000  
02 9236 6111

Architect  
**turner**  
L1 410 Crown Street Surry Hills NSW 2010 Australia t: +61 2 8668 0000

Landscape Architect  
**turf**  
turf design studio pty ltd  
95 Kingsway, Cronulla NSW 2230  
p: +61 2 9527 3380 | f: +61 2 9527 2307 95  
e: sydney@turfdesign.com

Project  
**Landscape Report**  
4 Murray Rose Avenue  
Sydney Olympic Park

Drawing Title  
**URBAN ELEMENTS  
& MATERIALS**

Project No. <b>1311</b>	Dwg No. <b>LA9</b>	Revision <b>D</b>
Scale <b>1:100 A3</b>	Date <b>10 June 2014</b>	
Dwg Status <b>Concept Design</b>		