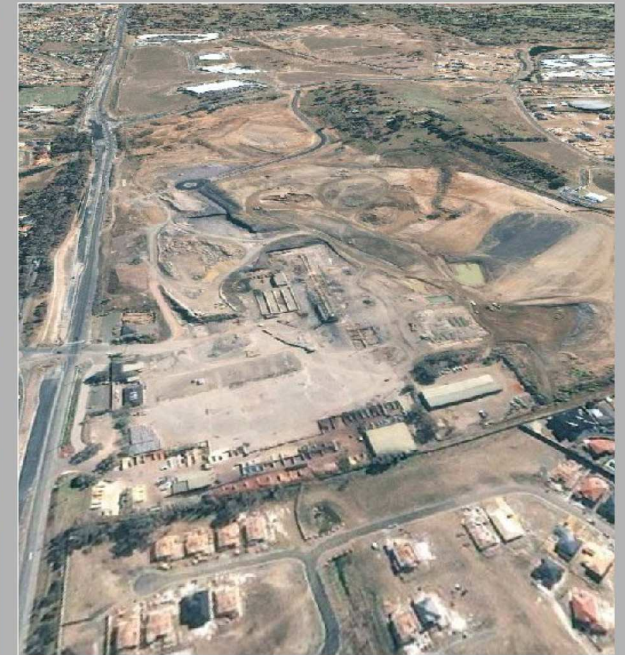


BELLA VISTA HOMESTEAD AND PRECINCT PHOTOMONTAGE STUDY

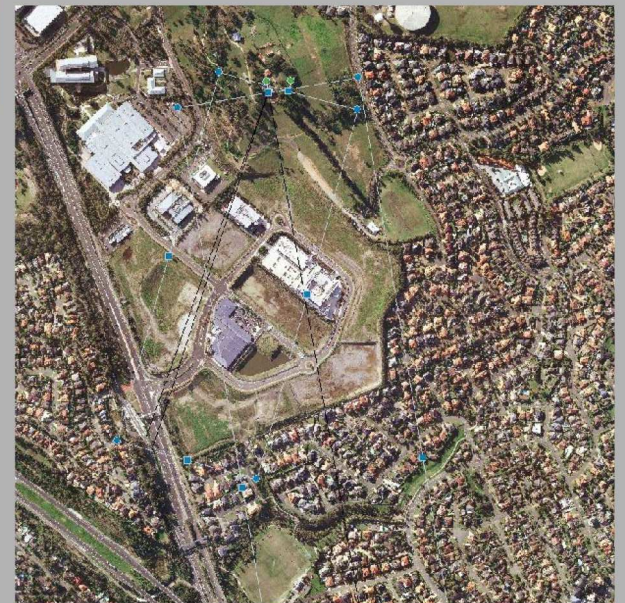


NORWEST PRIVATE HOSPITAL LEVEL 4 MEDICAL SUITES EXPANSION

for
Healthscope Pty. Ltd.

21 February 2017

Issue 1



Prepared by
Health Projects International Pty Limited
Architects and Health Facility Planners

Contact:	Hai Sun Tan
Telephone	02 9460 4199
Facsimile	02 9460 4299
Mobile	0418 663 680
E-mail	haisun@healthpi.com.au



CONTENTS

NORWEST BUSINESS PARK AERIAL PHOTOGRAPHS	3
PHOTOMONTAGE REFERENCE POINTS AERIAL PHOTOGRAPH	4
APPENDIX C - COUNCIL DCP 2012	5
PHOTOMONTAGE	6 — 21
TOPOGRAPHIC SECTIONS	22

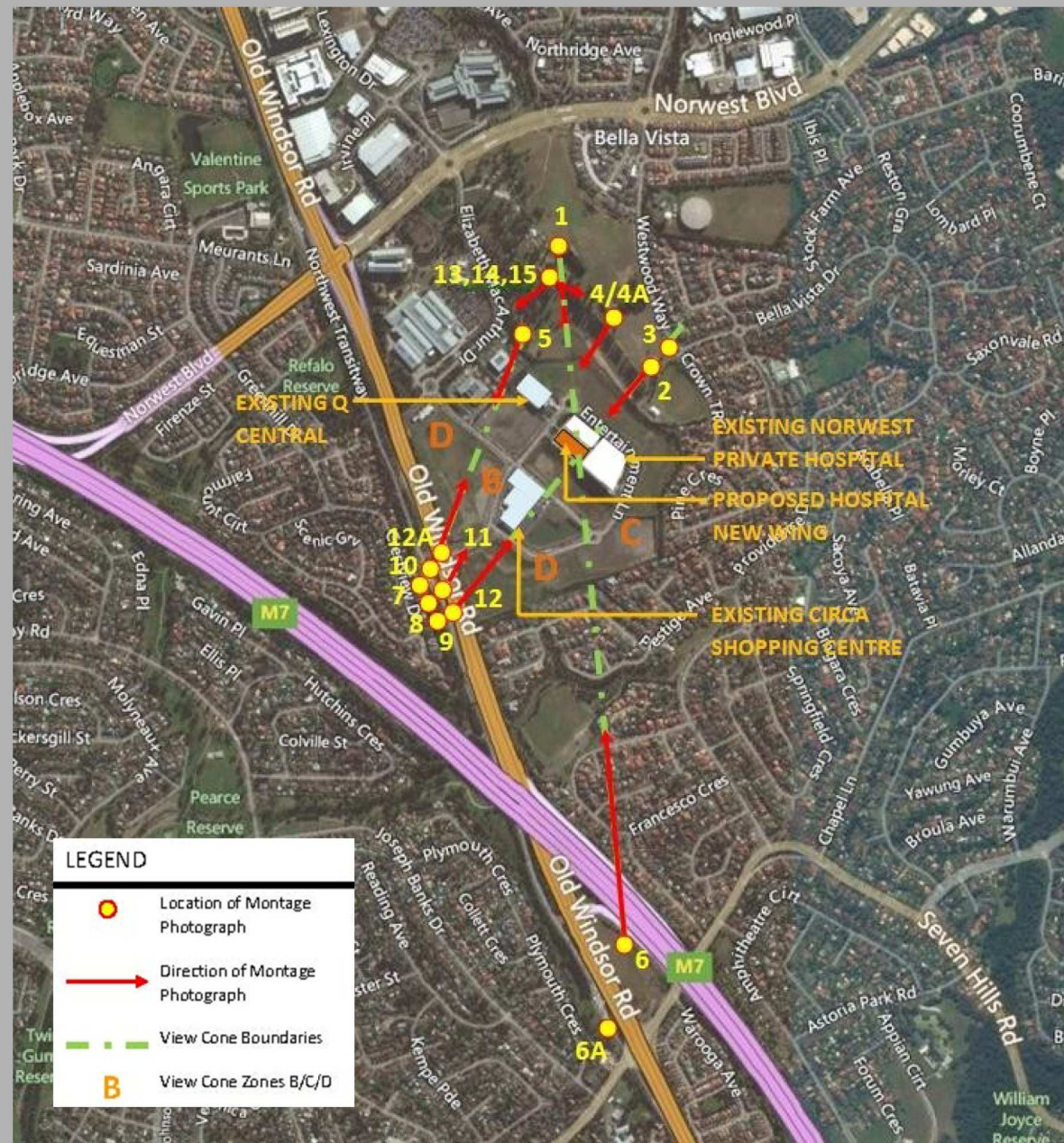




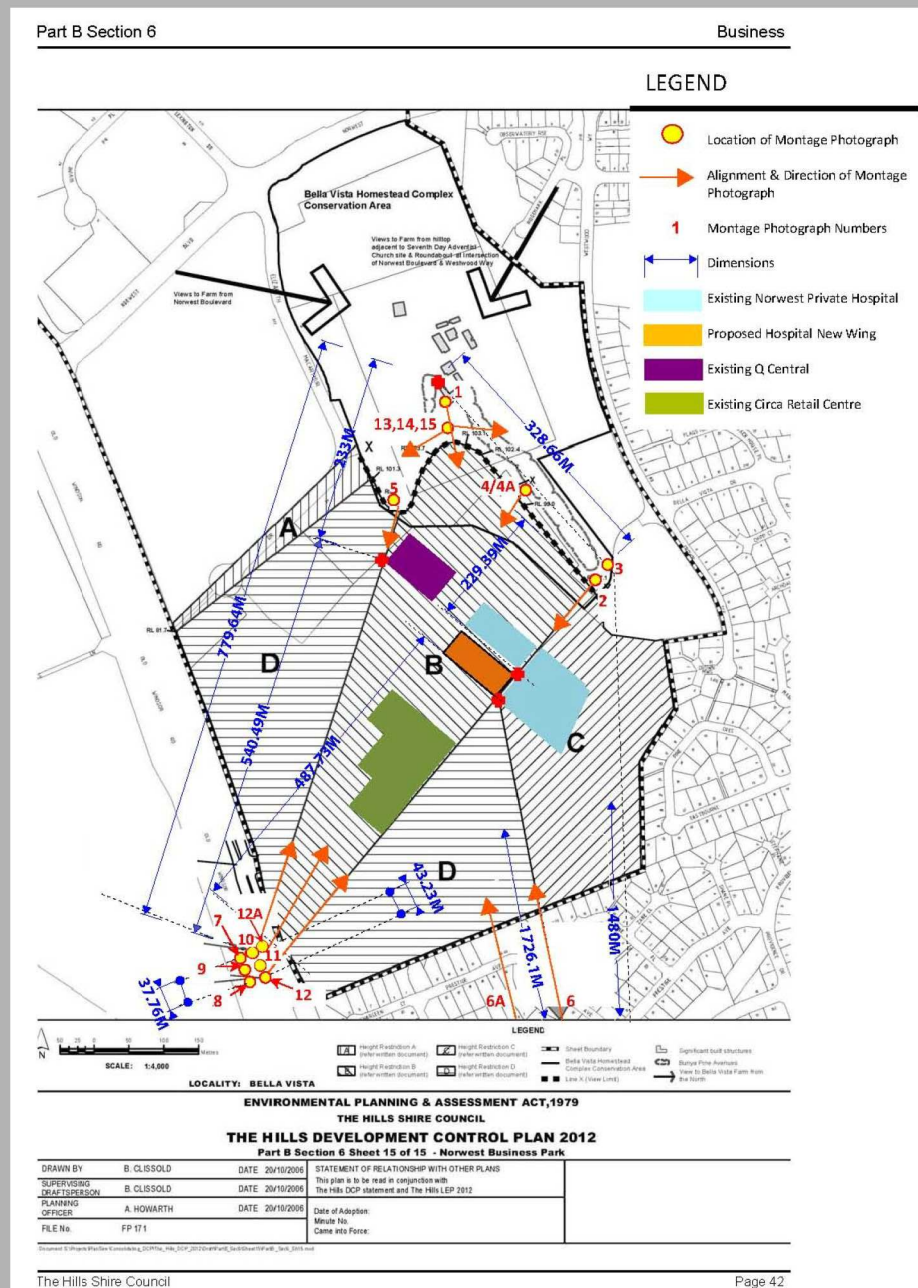
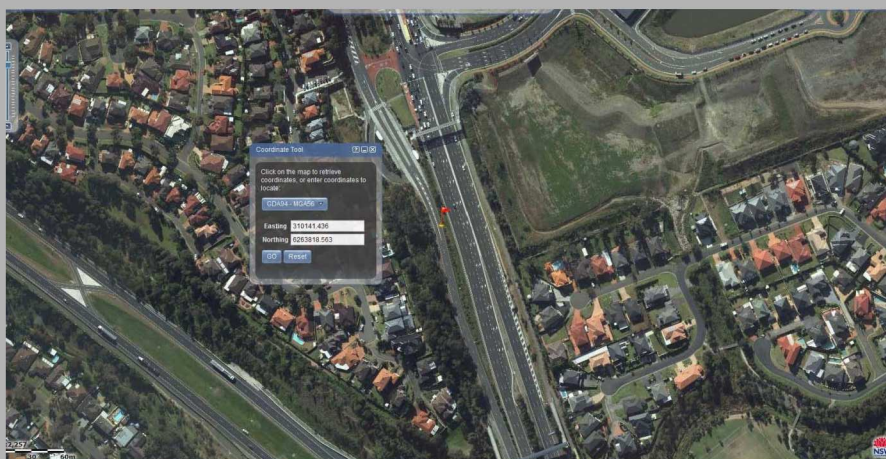
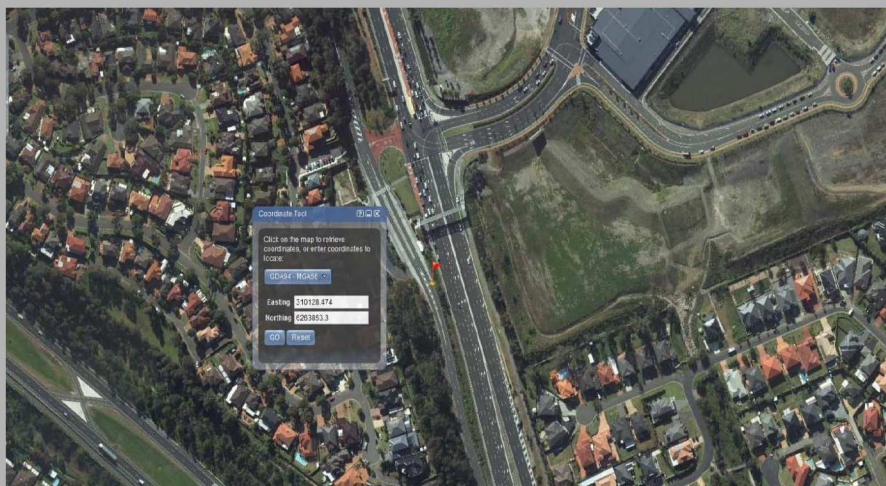
NORWEST BUSINESS PARK— 2007 (ARC GLOBE, NASA)



NORWEST BUSINESS PARK—2011 (THE HILLS SHIRE COUNCIL “AIR PHOTO”)

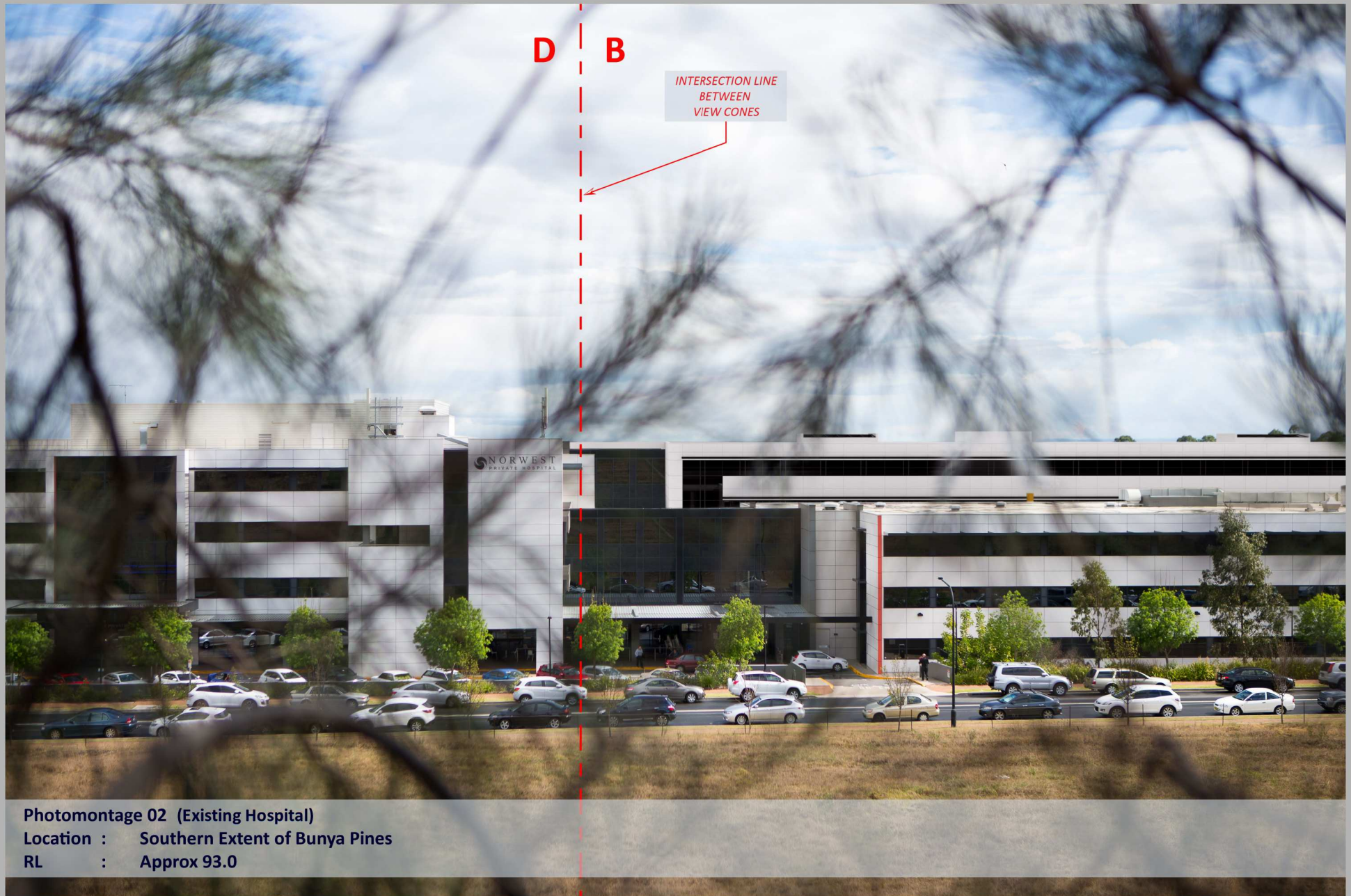


PHOTOMONTAGE REFERENCE POINT AERIAL PHOTOGRAPH (BING MAPS)









Photomontage 02 (Existing Hospital)

Location : Southern Extent of Bunya Pines

RL : Approx 93.0