

## Patricia Docherty

---

**From:** Natalie Rose <Natalie.Rose@jemena.com.au>  
**Sent:** Friday, 27 September 2013 11:57 AM  
**To:** Angus, Paul  
**Subject:** Jemena DBYD Response:DBYD JOB:6735810 SEQ:30818556 - 11 Norbrik Drive Dr Bella Vista NSW 2153  
**Attachments:** Standard DBYD 2011.pdf; B5B\_HIGH\_PRESSURE\_SECONDARY.pdf; B5A\_HIGH\_PRESSURE\_SECONDARY.pdf

Mr Paul Angus

REF : DBYD JOB:6735810 SEQ:30818556 - 11 Norbrik Drive Dr Bella Vista NSW 2153

Please follow excavation guidelines attached.

Regards,

### Natalie Rose

Administration Officer

**Jemena**

"Vital Service... Vital Planet..."

100 Bennelong Parkway - Homebush Bay - NSW - 2127

PO Box 6507 Silverwater 2128

T: (02) 9397 9107 | F: (02) 9397 9992

E: [Natalie.Rose@jemena.com.au](mailto:Natalie.Rose@jemena.com.au) | W: [www.jemena.com.au](http://www.jemena.com.au)

\*\*\*\*\*

This is a confidential message intended for the named recipient(s) only. The contents herein are privileged to the sender and the use thereof is restricted to the intended purpose. If you have received this e-mail in error, please do not use, disclose, distribute, copy, print or relay on this email. If receipt is in error, please advise the sender by reply email. Thank you.

\*\*\*\*\*



# Network Protection

## Assets Affected

In reply to your enquiry, there are gas mains at the location of your intended work as per the attached map. For an explanation of the map, please see the key below. The following excavation guidelines apply.

### Excavation Guidelines:

It is essential the location of gas pipe/s are confirmed by carefully pot-holing by hand excavation prior to proceeding with mechanical excavation in the vicinity of gas pipes. If you cannot locate the gas main, contact the local depot.

In accordance with clause 34D(1) of the Gas Supply (Safety and Network Management) Regulation 2008 (NSW), you should be informed that all excavation, (including pot-holing by hand to confirm the location of pipes) should be performed in accordance with **"Work Near Underground Assets**

**Guideline"** published in 2007 by the Work Cover Authority.

A copy of this Guideline is available at: [www.workcover.nsw.gov.au](http://www.workcover.nsw.gov.au)

DBYD Administration 1300 880 906

### KEY

MAX ALLOWABLE OPERATING PRESSURE				
— T —	TRUNK MAIN	7000 kPa	⋈	VALVE
— P —	PRIMARY MAIN	3500 kPa	□	SYSTEM PRESSURE REGULATOR
— S —	SECONDARY MAIN	1050 kPa	•	SIPHON
— — —		300 kPa	123	NETWORK NODES
— — —		210 kPa	123S	ITEM DETAIL SKETCH AVAILABLE
— — —		7 kPa	6NB	VALVE NUMBER (OLD NUMBERING)
— 400 —		400 kPa	150MM	6 INCH CAST IRON MAIN
— 100 —		100 kPa	110MM PE/NY	150MM STEEL MAIN
— — —		2 kPa	6NB 50MM NY	110MM POLYETHYLENE/NYLON MAIN
— — —			1.2MBL	50MM NYLON INSERTED INTO
— — —			1957	6NB MAIN CAST IRON MAIN
— — —			— + + + —	DISTANCE IN METRES OF MAIN FROM BUILDING LINE (TOLERANCE OF 0.4M)
— — —			— — —	YEAR LAID
— — —			— — —	MUNICIPALITY BOUNDARY
— — —			— — —	NETWORK BOUNDARY
— — —			123	HOUSE NUMBER
— — —			PR 11-23	STEEL MAIN PROJECT NUMBER
— — —			△	PRESSURE MONITORING STATION
— — —	PROPOSED MAINS			

**Warning:** The enclosed plans show the position of Jemena Gas Networks (NSW) Ltd's underground gas mains and installations in public gazetted roads only. **Individual customers' services and services belonging to other third parties are not included** on these plans. These plans have been prepared solely for the use of Jemena Gas Networks (NSW) Ltd and Jemena Asset Management Pty Ltd (together "Jemena") and any reliance placed on these plans by you is entirely at your own risk. The plans may show the position of underground mains and installations relative to fences, buildings etc., as they existed at the time the mains etc were installed. The plans may not have been updated to take account of any subsequent change in the location or style of those features since the time at which the plans were initially prepared. Jemena makes no warranty as to the accuracy or completeness of the enclosed plans and does not assume any duty of care to you nor any responsibility for the accuracy, adequacy, suitability or completeness of the plans or for any error, omission, lack of detail, transmission failure or corruption in the information provided. Jemena does not accept any responsibility for any loss that you or anyone else may suffer in connection with the provision of these plans, however that loss may arise (including whether or not arising from the negligence of Jemena, its employees, agents, officers or contractors). The recipient of these plans must use their own care and diligence in carrying out their works and must carry out further surveys to locate services at their work site. Persons excavating or carrying out other earthworks will be held responsible for any damage caused to Jemena's underground mains and equipment. In accordance with the Work Near Underground Assets Guideline published in 2007 by Work Cover Authority, Jemena recommends that you carry out pot-holing by hand to accurately confirm the location of gas mains and installation prior to commencing excavations.

**In case of Emergency Phone 131 909 (24 hours)**

Natalie

02 9397 9107

Jemena Asset Management Pty Ltd ABN 53 086 013 461  
for and on behalf of Jemena Gas Networks (NSW) Ltd ABN 87 003 004 322



A horizontal scale bar labeled "SCALE 1:2000". The bar is divided into segments representing distances in meters. Major markings are at 0, 50, 100, 150, and 200. Each 50-meter segment is further divided into four 12.5-meter sub-segments.

THIS MAP UPDATED ON 05/11/12  
 THIS PLAN IS DIAGNOSTIC ONLY. DISTANCES  
 DERIVED FROM THIS PLAN MAY NOT BE ACCURATE.  
 DATE ALTERED: BY: 05/11/12

B2C	B2D	B3C
B5A	B5B	B6A
B5C	B5D	B6C

ADJOINING MAPS

544

MUNICIPALITY AREA

lemera

## KEY

MAX ALLOWABLE OPERATING PRESSURE

TRUNK MAIN	7000 kPa
PRIMARY MAIN	3500 kPa
SECONDARY MAIN	1050 kPa
	300 kPa
	210 kPa
	7 kPa
	400 kPa
	100 kPa
	2 kPa

PROPOSED MAINS

PP 1-2 3

**△** PRESSURE MONITORING STATION

 VALVE☐ SYSTEM PRESSURE REGULATOR

5 SIPHON

123 NETWORK NODES  
124 ITEM DETAIL SKETCH AREA NODE

ITEM DETAIL SKETCH AVAILABLE  
VALVE NUMBER (OLD NUMBERING)

6 INCH CAST IRON MAIN

150MM	150MM STEEL MAIN	3/4 INCH CAST IRON FRAIN
-------	------------------	--------------------------

10MM PE/NY 110MM POLYETHYLENE/NYLON MAIN

INB 50MM NY 50MM NYLON INSERTED INTO

6NB MAIN CAST IRON MAIN

1.2MBL DISTANCE IN METRES OF MAIN BUILDING LINE (TOLERANCE OF 0.001)

1957	YEAR 1 AID	BUILDING LINE TOLERANCE OF

1937  
- + - + -  
YEAR END  
MUNICIPALITY BOUNDARY

NETWORK BOUNDARY

HOUSE NUMBER

BLACKTOWN 5B







## Patricia Docherty

---

**From:** Angus, Paul <Paul.Angus@wspgroup.com.au>  
**Sent:** Wednesday, 9 October 2013 10:25 AM  
**To:** Steve Donnelly (Steve.Donnelly@jemena.com.au); Peters, Elle (Eliana.Peters@jemena.com.au)  
**Subject:** Jemena Letter of Intent - Norwest Private hospital, 11 Norbrik Drive, Bella Vista, NSW, 2153  
**Attachments:** Jemena DBYD Response:DBYD JOB:6735810 SEQ:30818556 - 11 Norbrik Drive Dr Bella Vista NSW 2153

Hi Steve / Elle,

Hope all is well with you both.

We are assisting with a new hospital extension, which we have just been appointed to assist with and at early concept stage. We've been onsite to investigate and also attached the DBYD info.

I was hoping you might be able to assist me with a couple of queries:

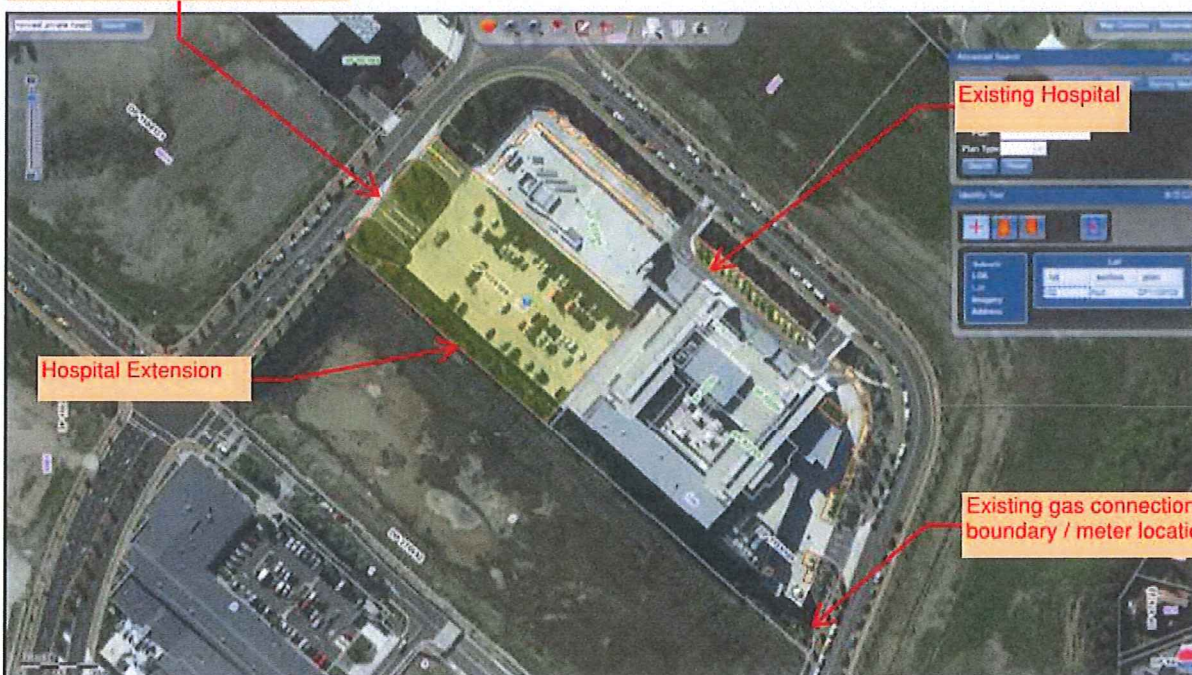
- As the existing hospital is 'live' we are looking at the possibility of having two gas connections to minimise disruption for the existing hospital and the new extension. Can you advise on the implications or constraints involved with this, i.e. two meters, two standard charges, billing arrangement, etc.
- If we seek to upgrade the existing supply, is this a simple exercise and how long should we factor in for a risk scenario should the gas be switched off?
- Also, can we obtain a Jemena gas letter of intent?

**Site address:**

11 Norbrik Drive, Bella Vista, NSW, 2153. The existing hospital & gas connection, new hospital extension and gas connection location is annotated on the sketch below.



Proposed new gas connection and boundary / meter location approx.



Hospital Extension

Existing Hospital

Existing gas connection and boundary / meter location approx.

Norwest Private Hospital New Wing - Lot Plan. (Source: NSW SIX Maps)

## Description:

The new Hospital extension caters for 50 inpatients and 100 staff. A breakdown floor by floor is detailed below:

**Basement:** - Addition of nineteen (19) car spaces.

**Ground:** - Expansion of Waste, Line & Kitchen to accommodate additional Inpatient Beds.

### Level 1

- New Day Surgery Pre-Admission/Surgical Admission.
- Refurbishment of existing Cath Lab (relocated to new 'wing') to provide new Inpatient Admission , ICU Visitors Lounge, CSSD Store & Support.
- Expansion of Washing/Decontamination, Packaging, Cooling Store & Sterilising to accommodate new OT's.
- New OT's, including:
  - Three (3) additional Operating Theatres.
  - One (1) additional Hybrid Operating Theatre.
  - Relocation of Cath Lab.
  - Additional Support & Staff Amenities
- New Perioperative Bays to accommodate OT Expansion.
- Stage 1 Recovery Lounge Extension to accommodate OT Expansion.
- Stage 2 Recovery Lounge Extension to accommodate OT Expansion.

### Level 2

- New Plantroom to accommodate new OT's.
- New Executive Suite (155m<sup>2</sup>) & new medical suite space (654m<sup>2</sup>).
- New Training/Education/Conference Centre (262m<sup>2</sup>).
- New Administration Area (175m<sup>2</sup>)
- New Medical Records Area (90m<sup>2</sup>)

**Level 3 - Fifty (50) new Inpatient Beds w/bridge link to existing Ward.** It is noted that a further option may be pursued to include an additional two (2) Operating Theatres, thirty (30) beds & resultant deletion of consultancy space.