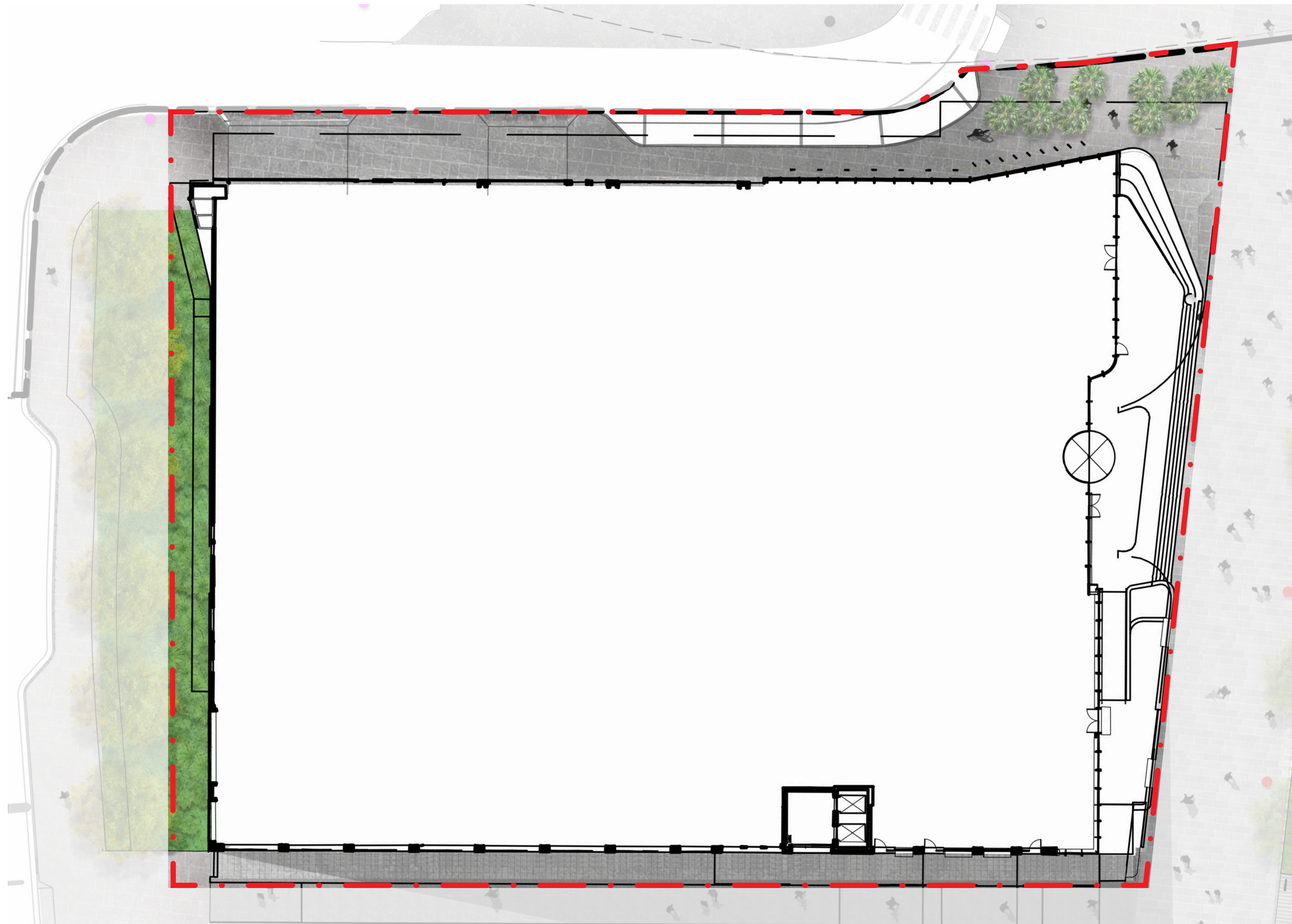


DRAWING LIST

Number	Title	Scale	Issue	Rev
14076-SSDA5-S96-(D)-001	Drawing List	1:200	Section 96	A
14076-SSDA5-S96-(D)-201	General Arrangement	1:200	Section 96	A
14076-SSDA5-S96-(D)-210	Paving Plan	1:200	Section 96	A
14076-SSDA5-S96-(D)-211	Planting Plan	1:200	Section 96	A
14076-SSDA5-S96-(D)-212	Urban Elements Plan	1:200	Section 96	A



Darling Square, NW Plot

ASPECT Studios™

Client: **Lendlease Haymarket**
Architect: **Woods Bagot**



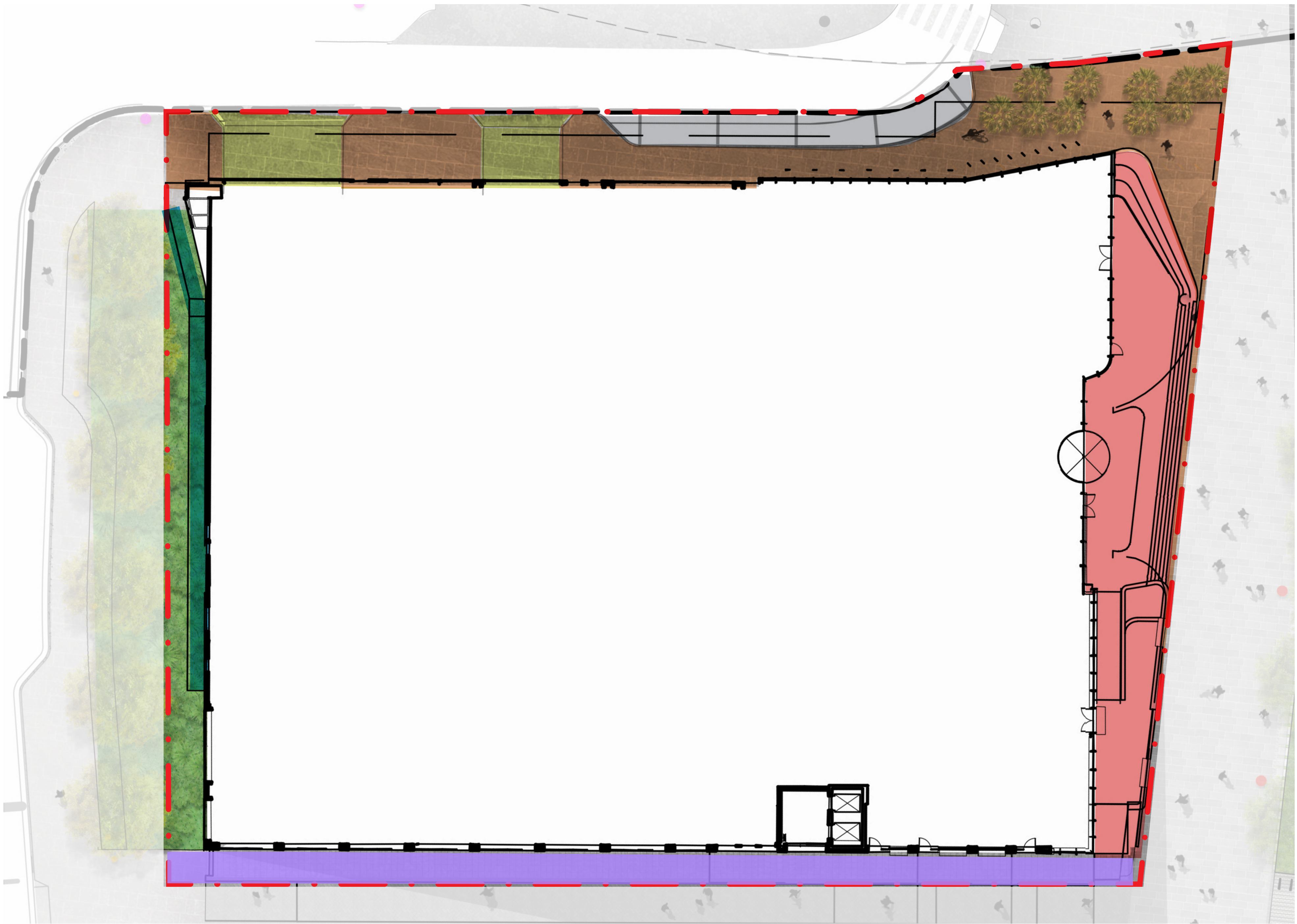
Drawn: **RD**
Checked: **LP/SC**

Scale: **1:200 @ A1**
Date: **October 2016**



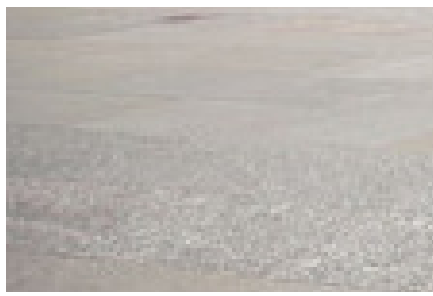
GENERAL ARRANGEMENT

Dwg no.: **14076-SSDA5-S96-(D)-201**
Rev: **D**

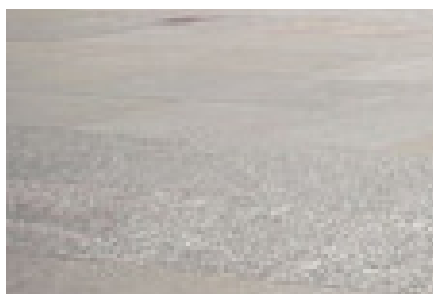


Zolner Circuit

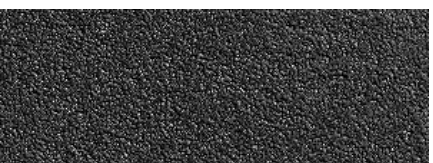
Material - Granite
Finish - Exfoliated to AS
Colour - Austral Black
Thickness - To engineer
specification.



Material - Granite
Finish - Exfoliated to AS
Colour - Austral black
Thickness - Vehicular
grade to engineer
specification.

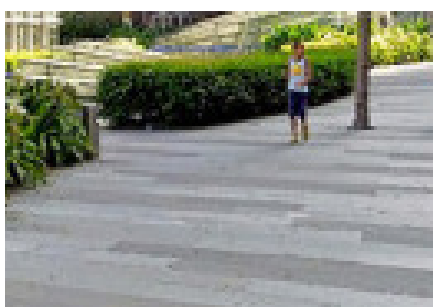


Material - Asphalt
Thickness - To engineer
specification.

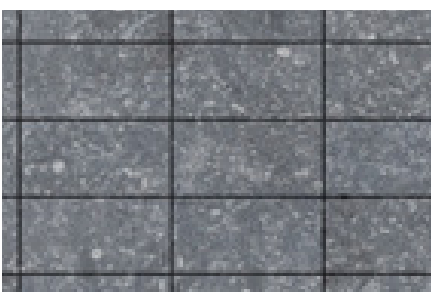


Steam Mill Lane

Material - Granite
Finish - Exfoliated to AS
Colour - Varies
Thickness - To engineer
specification.



Material - Bluestone
Finish - Varied finishes to
AS
Thickness - To engineer
specification.



Building Terrace

To NW Plot architect's
specification.

Darling Drive

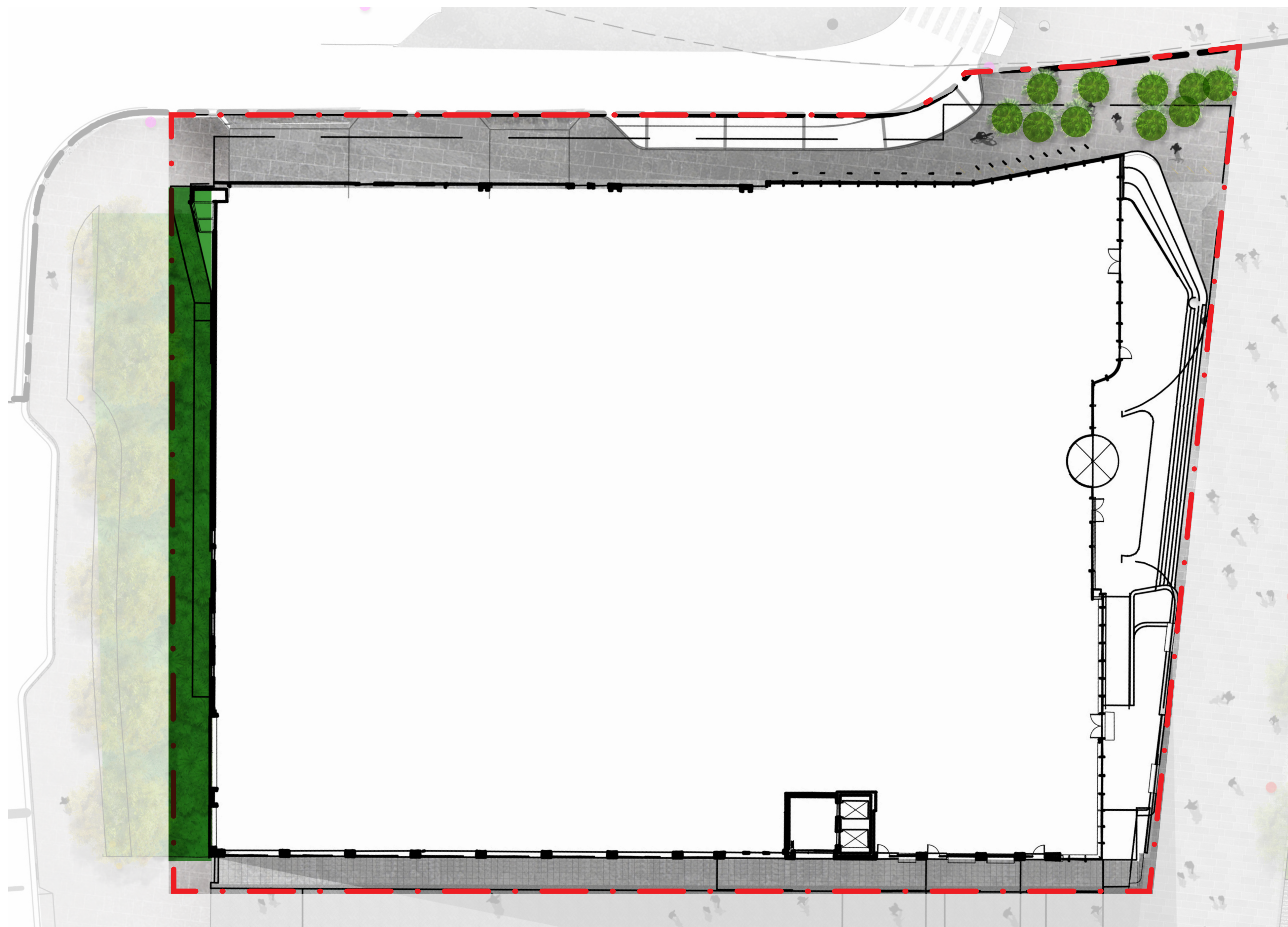
To NW Plot architect's
specification.
(Expanded steel mesh)

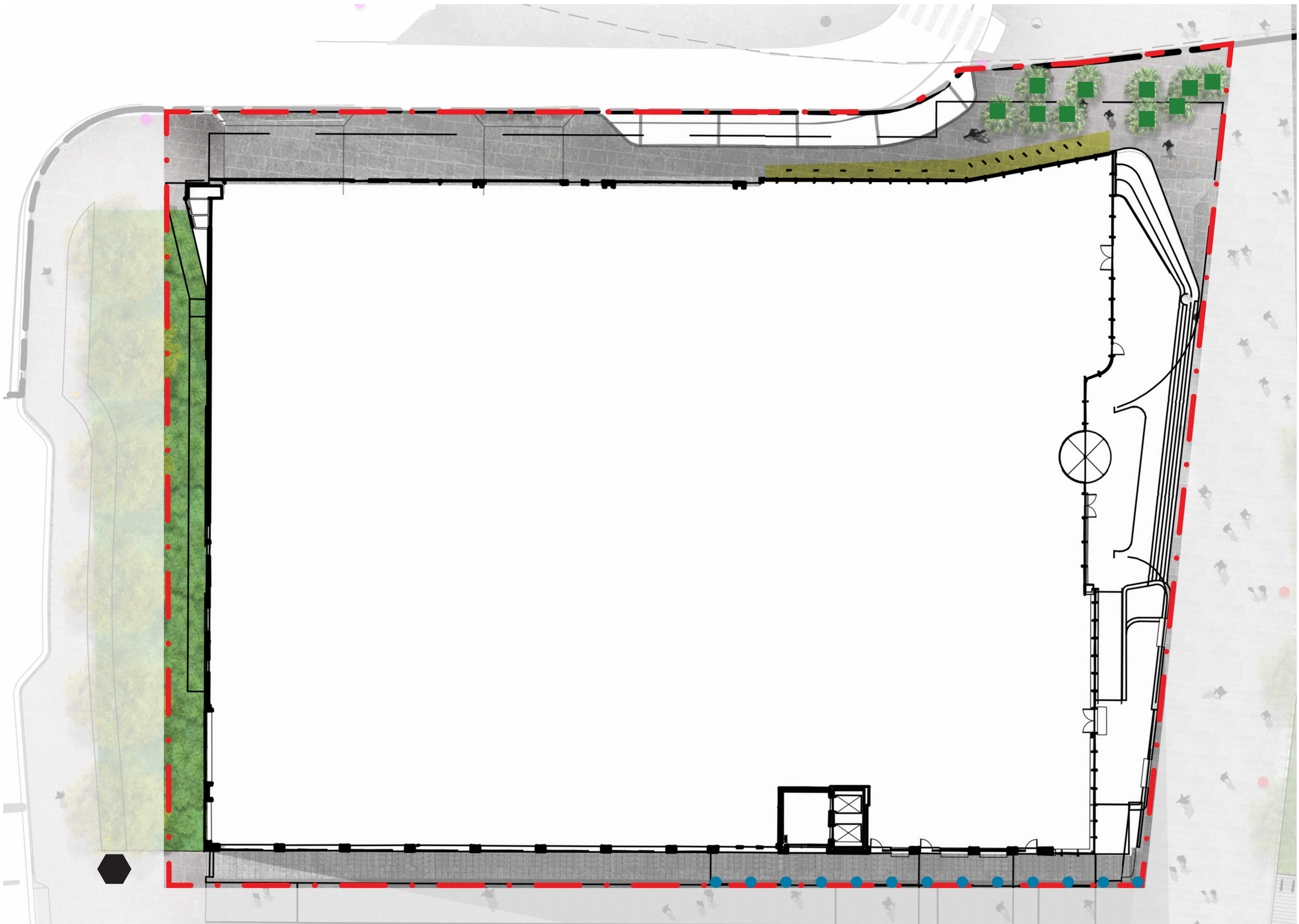


Darling Drive - Bio Filtration Swale



Back of Pier Street - Palm Trees





Tree Grate

Material - Granite
Location - Theatre Drive
Colour - Austral Black



Bike Rack

Material - Stainless steel
CHS
Location - Theatre Drive
Colour - Stainless Steel
Number - 32 Parks (16 hoops)



Under Awning code Lighting

Material - under awning
lights
Location - Dickson's Lane
Fixing- Waterproof

