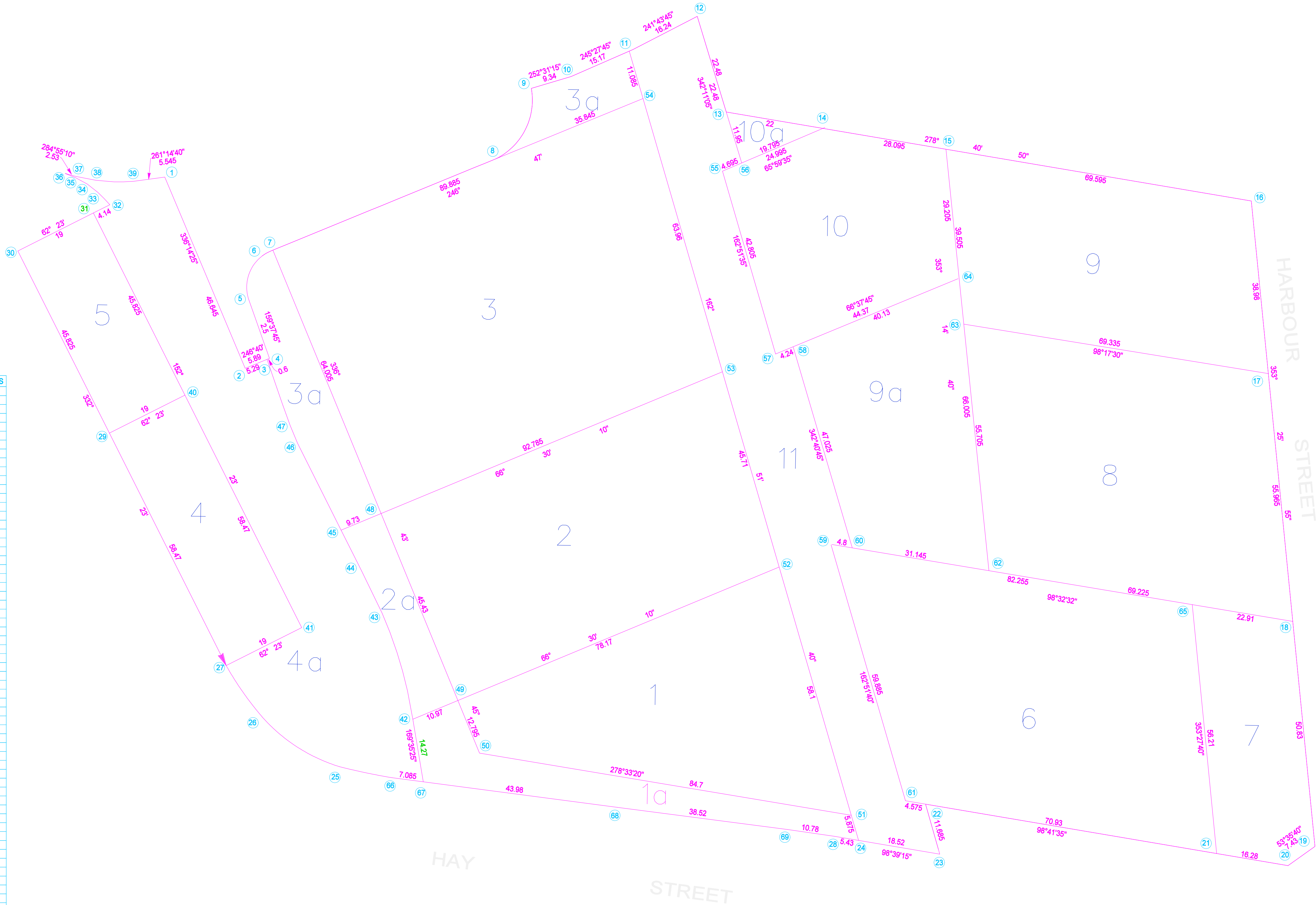


# Appendix B

## Detailed Site Survey Plans

**Site Specific Remedial Action Plan  
Haymarket, Sydney NSW**

SCHEDULE OF BOUNDARY CO-ORDINATES		
No.	EASTING	NORTHING
1	333574.67	6249832.09
2	333593.46	6249889.40
3	333598.32	6249891.48
4	333598.87	6249891.73
5	333593.80	6249905.48
6	333596.88	6249914.73
7	333599.23	6249916.06
8	333648.90	6249937.37
9	333656.77	6249953.06
10	333665.62	6249956.18
11	333678.57	6249962.09
12	333693.73	6249970.17
13	333700.60	6249948.77
14	333722.35	6249945.45
15	333750.12	6249941.21
16	333816.52	6249930.70
17	333823.38	6249991.98
18	333829.78	6249836.38
19	333835.59	6249785.88
20	333829.62	6249781.47
21	333813.52	6249783.93
22	333747.94	6249793.96
23	333751.32	6249782.78
24	333733.01	6249785.56
25	333616.09	6249800.23
26	333598.53	6249811.14
27	333590.27	6249822.53
28	333727.65	6249785.38
29	333563.17	6249874.34
30	333541.93	6249914.94
31	333558.76	6249923.75
32	333562.43	6249925.67
33	333559.72	6249928.38
34	333557.27	6249930.23
35	333554.72	6249931.58
36	333552.24	6249832.55
37	333554.69	6249931.90
38	333559.19	6249931.11
39	333567.67	6249931.01
40	333580.00	6249883.15
41	333607.11	6249831.34
42	333632.41	6249811.16
43	333625.12	6249834.68
44	333619.47	6249845.98
45	333615.60	6249853.38
46	333605.48	6249872.76
47	333603.75	6249876.75
48	333624.62	6249857.26
49	333642.47	6249815.53
50	333647.62	6249803.78
51	333731.28	6249791.18
52	333714.16	6249846.70
53	333700.69	6249890.38
54	333681.84	6249851.50
55	333699.98	6249835.48
56	333704.27	6249937.39
57	333712.59	6249894.58
58	333716.52	6249896.18
59	333725.76	6249851.88
60	333730.52	6249851.29
61	333743.41	6249794.65
62	333761.32	6249846.66
63	333754.77	6249801.98
64	333753.32	6249812.18
65	333807.12	6249839.78
66	333627.95	6249797.94
67	333634.99	6249797.13
68	333678.68	6249792.11
69	333716.96	6249787.75
70	333717.05	6249788.75
71	333727.79	6249787.37



NOTES:

LIMITED BOUNDARY SURVEY MADE. IF ANY CONSTRUCTION IS INTENDED IN THE PROXIMITY OF THE BOUNDARIES IT IS RECOMMENDED THAT A FURTHER SURVEY BE REQUESTED FOR THE MARKING OF THE RELEVANT BOUNDARIES.

ORIGIN OF CO-ORDINATES:  
SSM 168145  
E 333 679.368  
N 6249942.260

ORIGIN OF AZIMUTH:  
SSM 54327 TO SSM 168146

ORIGIN OF LEVELS:  
PM 55082 RL 3.288 AHD

THIS PLAN HAS BEEN CREATED AT A SCALE OF 1:500 AND MAY NOT BE SATISFACTORY FOR OTHER PURPOSES. THE ACCURACY OF ANY ENLARGEMENT OR OTHER REPRODUCTION MAY BE LESS THAN THAT OF THE ORIGINAL.

NO PART OF THIS PLAN MAY BE REPRODUCED, COMMUNICATED, STORED IN A RETRIEVAL SYSTEM OR TRANSMITTED IN ANY FORM WITHOUT THE WRITTEN PERMISSION OF THE COPYRIGHT OWNER EXCEPT AS PERMITTED BY THE COPYRIGHT ACT 1968. ANY PERMITTED DOWNLOADING, ELECTRONIC STORAGE, DISPLAY, PRINT, COPY, REPRODUCTION OR COMMUNICATION OF THIS SURVEY SHOULD CONTAIN NO ALTERATION OR ADDITION TO THE ORIGINAL SURVEY.

COPYRIGHT © RYGATE & COMPANY PTY. LIMITED 2013.


LOT DETAILS OBTAINED FROM COMPUTER FILE PROVIDED 005198 HAYMARKET STAGING.DWG.

BOUNDARIES OF HAY AND HARBOUR STREETS REDEFINED CAD FILE PROVIDED ADJUSTED ACCORDINGLY

FINAL BOUNDARIES, DIMENSIONS AND CO-ORDINATES MAY VARY SUBJECT TO APPROVAL AND REGISTRATION PROVIDED AT TITLES OFFICE.

LOT NUMBERING SHOWN HEREON IN ACCORDANCE WITH ABOVEMENTIONED PROVIDED CAD FILE.

A	14/5/13	BOUNDARY LOTS 5, 4, 4a, 11 AND 1A AMMEDED TO BE APPROX. 3m FROM THE ADJACENT RAIL LOTS 4 AND 5 NORTHERN AND SOUTHERN BOUNDARIES ALIGNED WITH PREVIOUS EXTENTS, COMMON BOUNDARY APPROX CENTRAL TO PROPOSED BUILDING, EASTERN BOUNDARY 19m FROM WESTERN BOUNDARY.
REV.	DATE	AMENDMENTS



Rygate & Company Pty Limited

P.W. Rygate & West

ABN 61 001 204 897

Suite 904 Level 9, 89 York St

Sydney NSW 2000

P +61 2 9262 8800

F +61 2 9262 8943

surveyors@rygate.com.au

rygate.com.au

SURVEYING SINCE 1893

SUBDIVISION | STRATA PLANS | STRATUM SUBDIVISION | LEASE PLANS | TOPOGRAPHIC SURVEYS | GPS SURVEYS | 3D MODELLING | RACECOURSE DESIGN | PROJECT MANAGEMENT | SUN SHADOW DIAGRAMS

SURVEYOR	DRAWN	CHECKED	APPROVED
-	-	-	-

0

50

REDUCTION RATIO 1:500 @ A1

DATUM :  
CONTOUR INTERVAL :  
ORIGIN OF LEVELS :

THIS TITLE BLOCK AND NOTES FORM AN INTEGRAL PART OF THE PLAN AND MUST BE REPRODUCED IN ANY USE, DUPLICATION OR AMENDMENT.

CLIENT

LEND LEASE DEVELOPMENTS

LOCALITY

DARLING HARBOUR

L.G.A.

SYDNEY

PLAN

SHOWING PROPOSED LOT DIMENSIONS  
HAYMARKET REMEDIATION

CAD REFERENCE 75813\_005198\_haymarket staging\_220513.dgn

REFERENCE No.	PLAN No.	DATE	SHEET No. -
75813	75813_1	6/5/2013	OF - SHEETS