

Primary Civic Spaces

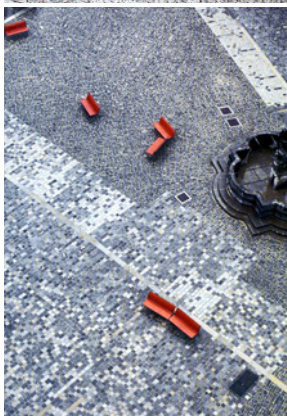
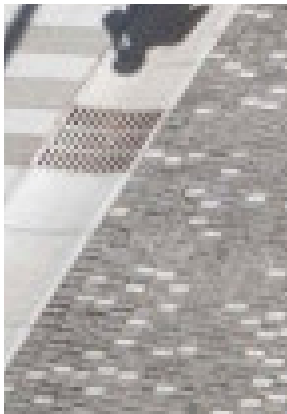
Secondary Local Spaces

① Boulevard -



*Natural*  
Large format high quality pavers. Variation in colour, size and texture.

② Square + Laneways



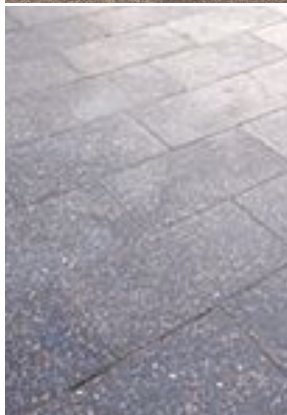
*Laneways*  
Small format paver with detailed variation in paving and textural contrast.

③ 'Local' Squares

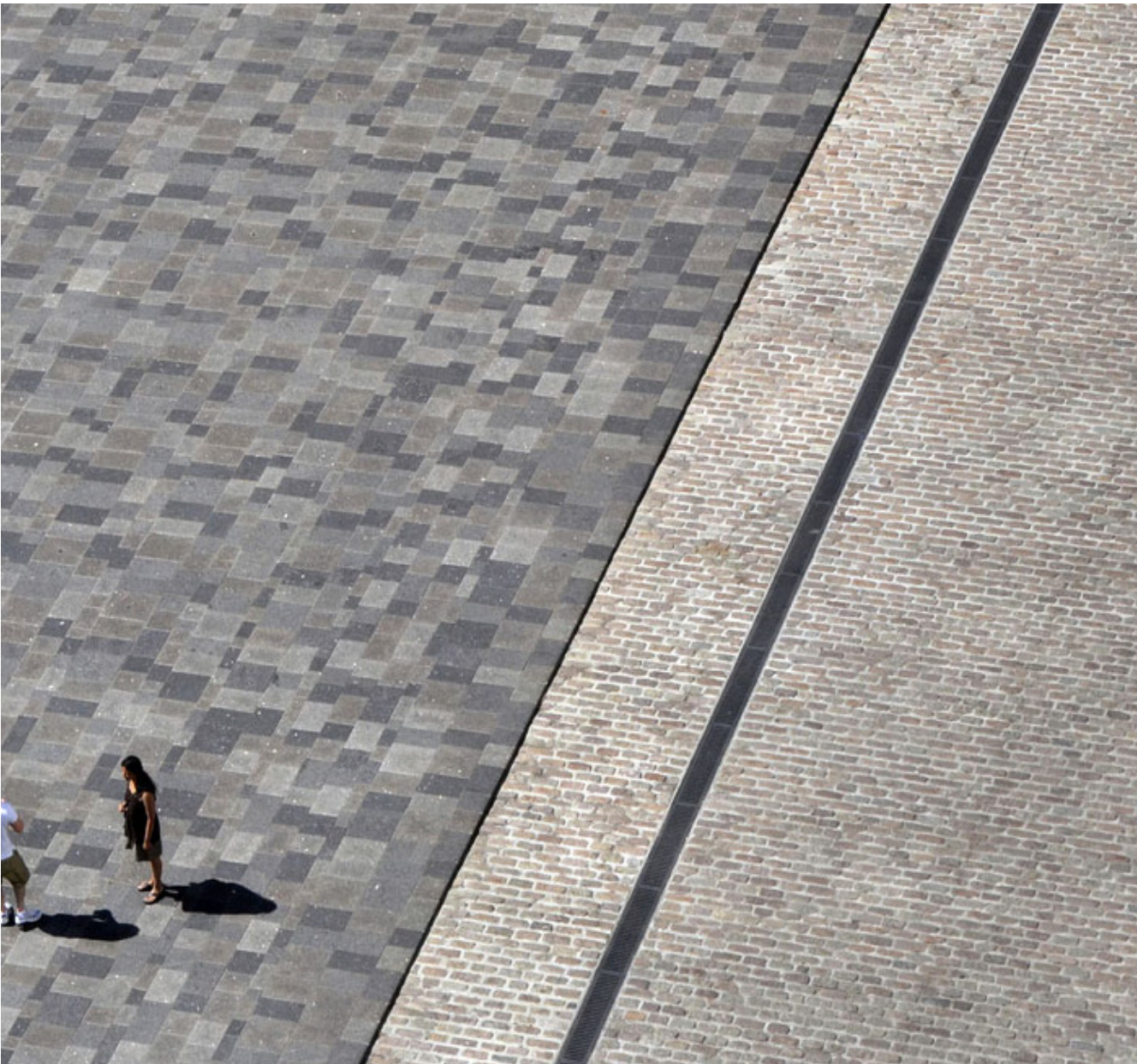


*Local Squares*  
A combination of raw materials to provide softer 'character' experience. Materials include, deco granite, timbers, and recycled brick

④ 'Perimeter'



*City of Sydney Skin*  
Primarily concrete pavers to match City of Sydney paving. Granite paving or similar may be used to tie into existing granite paved streets



Example of large format granite pavers with tonal variation (Boulevard) and small scale granite sett paving (Square). Source - Place d Aarmes in Canada, Cardinal Hardy. Photos by Isabelle Messier-Moreau



## 6.2 PLANTING AND TREES

Site wide, the drivers for the vegetation and tree selection within the SICEEP precinct are based upon many influences:

- Past ecologies
- The historical valley floor, escarpment and their geology
- Orientation
- Existing neighbourhood character
- Existing trees inside and outside of the site
- Desired character of proposed development
- Desired microclimate outcomes

Figure 6.2.2– Site Wide Vegetation Typologies demonstrates the various typologies that have been identified across the whole precinct. Within these typologies, the above listed influences have been considered and a selection criteria for trees applied.



Figure 6.2.2 Site Wide Vegetation Typologies

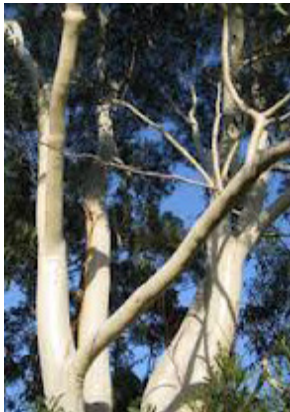
Figure 6.2.3 illustrates the indicative tree strategy for The Haymarket. Requirements for size, appearance and habit plus potential to tie in with existing patterns outside of the site have led to the creation of selection criteria for the typologies within The Haymarket site as indicated on the following page.



Figure 6.2.3 Haymarket Tree Strategy Diagram



1 The Boulevard



*Boulevard Typology*

A grand, native Eucalypt species with irregular - open growth habit. Interesting bark with a mature height of 15m

Nominated species:  
Eucalyptus racemosa,  
Eucalyptus gummifera,  
Eucalyptus piperita

2 The Laneways

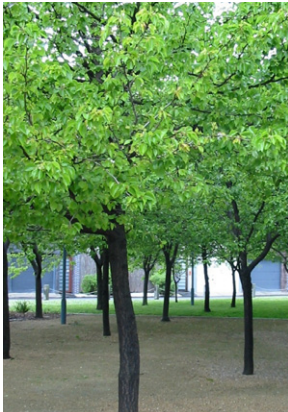


*Laneways Typology*

Primarily deciduous urban trees with relaxed growth habit up to 8m tall. Seasonal variation and attractive bark considered as important qualities. Some evergreen species considered as key visual back drop and winter interest.

Nominated species: Robinia pseudoacacia, Ulmus parvifolia,

3 Haymarket Square



*Haymarket Square Typology*

Deciduous urban grove planting with attractive bark and seasonal change. Dappled shade and intimate canopy ceiling heights to control microclimate and provide human scale.

Nominated species:  
Lagerstroemia indica, Pyrus calleryana, Pistacia chinensis

4 Hay Street



*Hay Street Typology*

Urban street tree with wide spreading habit.

Nominated species:  
Ficus macrophylla, Robinia pseudoacacia, Zelkova serrata

5 Macarthur Place



*Macarthur Place Typology*

In keeping with the existing language of Darling Drive, native, medium sized evergreen trees to frame the space

Nominated species:  
Cupaniopsis anacardioides,  
Ficus benjamina

6 Darling Drive



*Darling Drive Typology*

Native, medium to large sized evergreen trees to provide scale, softening and year round framing to the road

Nominated species:  
Cupaniopsis anacardioides,  
Ficus benjamina



## 6.3 FURNITURE

Furniture within The Haymarket will facilitate a diversity of use, in line with the rich array of day and night activity in a vibrant and active urban neighbourhood.

A range of permanent street furniture will be complementary to the greater SICEEP precinct furniture strategy, placed within key gathering areas in the precinct to enable flexibility in its use. With free Wi-Fi throughout the precinct, the furniture needs to enable and encourage its use for working or connecting – where students and office workers alike can share a bench or table and log on to the network. The nature of the site being active, day and night, necessitates furniture that is robust yet appeals to the younger demographic through modern design.

Figure 6.3.1 illustrates the distribution of furniture types throughout the public domain of the Haymarket within the following spaces.

### Haymarket Square

Outdoor café seating will be focussed around the retail fringes and upper terraces of the square but periodically spill out into the Square and laneways in response to events. Permanent furniture will need to be generous and communal and will be periodically supplemented by a range of contemporary outdoor furniture responding to events, weather and functions. Seat walls and steps will provide informal seating opportunities around the square and will be organised to maximise opportunities for relaxation, access and viewing. A variety of bespoke seating and tables, seat walls and movable elements will be located within the square to achieve these objectives.

### The Laneways

Laneway seating will respond to the adjacent retail use. A vibrancy in these laneways will be created through the highly active edges of the spaces.

### The Boulevard

The Boulevard is the journey and the link through the public domain of the Darling Harbour precinct, requiring generous public seating opportunities for meeting, dwelling and interacting. The furniture for the Boulevard will be designed to respond to the materiality and language of the site, artistically designed to facilitate a variety of use.

### Macarthur Place

As a park space associated with the student accommodation, Macarthur Place requires robust and visually interesting furniture that is integral to the fabric of the square, such as wide planter walls and seating ledges. This maintains a strong, uncluttered aesthetic.

Bike racks will be allocated across the site to encourage cyclists to utilise the precinct.



Figure 6.3.1 Haymarket Furniture Strategy diagram



### ① Fixed Bespoke Seating Elements



#### Fixed Bespoke

Custom designed benches and seating in stone and timber as permanent seating elements in laneways and the square.

### ② Seat Walls



#### Seat Walls

Built in to the fabric of the squares as edges to water features or planters, in precast concrete or stone.

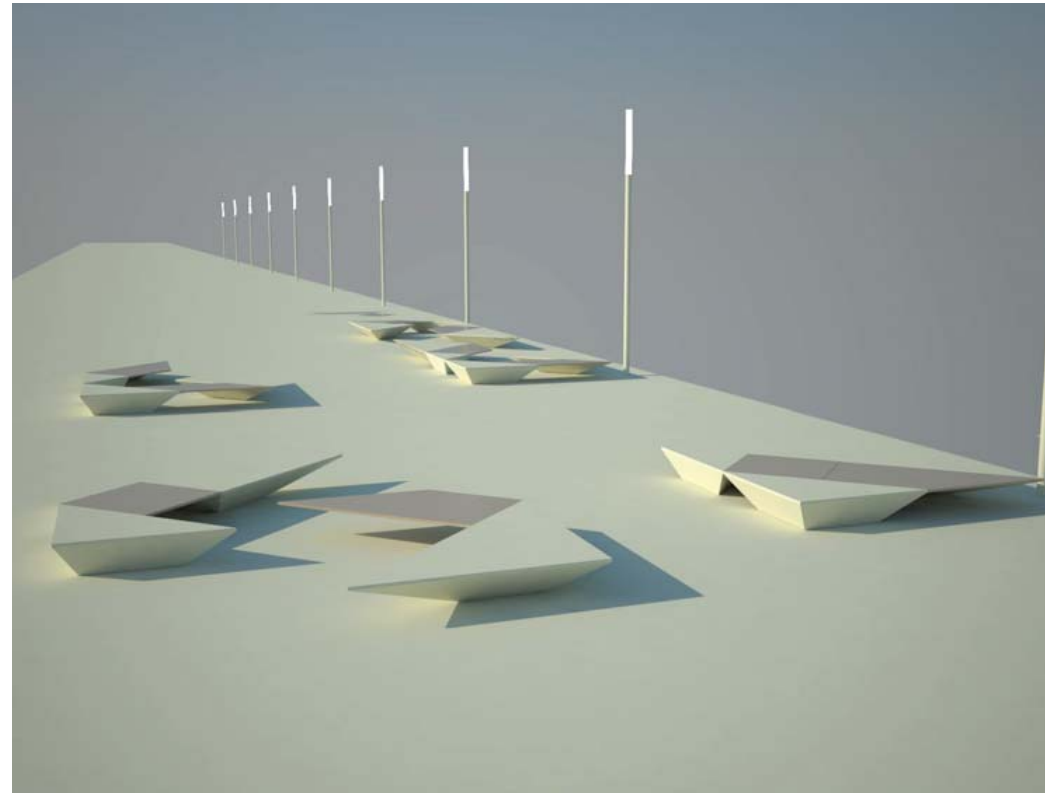
### ③ Movable Seating Elements



#### Movable Seating Elements

Retail and cafe areas will utilise space within the square for a range of cafe seating and tables. Plus feature seating at events and promotions such as deck chairs, moveable lounges and stools.

### ④ Concept feature furniture for Boulevard



#### Feature Furniture

Feature seating element for the Boulevard will be a custom designed element that can take on a variety of forms. This will allow for a range of activities such as eating, sleeping, chatting and watching..



## 6.4 LIGHTING

### Lighting

As a city precinct that remains open 18 hours a day, 7 days a week, the lighting of The Haymarket public domain is crucial to creating the atmosphere of a vibrant and stimulating night time destination. Lighting will be transformative – generating a change in character and activity focus after dark.

The night time activity within the precinct will range from spill out from large scale public events, concerts and functions, to the more everyday activity generated from eating, drinking, meeting and living within the environs of the Square. As such, the lighting needs to be:

- Responsive and flexible –capable of being enhanced or toned down in line with levels of activity.
- Stimulating and visually compelling
- Site and character zone specific
- Designed to increase safety through lux levels, public activity levels and surveillance opportunities in line with CPTED principles.

Figure 6.4.1 illustrates the indicative distribution of lighting types throughout the public domain of the Haymarket within the following spaces.

#### Haymarket Square

In addition to lighting from the private domain and retail around the edges of the space, the lighting of Haymarket Square will focus on the creation of atmosphere and drama around the water feature and within the paving. Uplights to trees, feature lighting strips within the interpretive rills, and feature lighting of the pools and fountains will provide variety and contrast. Safe lux levels will be achieved through additional lighting as required to meet CPTED principles.

#### The Laneways

Generally safe light levels will be achieved through the adjacent retail, however there is the opportunity to uplight trees to create atmosphere, and to highlight the interpretive rill of Little Hay Street at night.

#### The Boulevard

A strong continuous line of pole top lighting will ensure that this main thoroughfare is a well lit and comfortable space at night. Lighting will also highlight furniture and trees

#### Macarthur Place

Pole top lights will provide safe light levels to this space to increase the safety of students using the square at night. Additional uplighting to trees will provide atmosphere.

### Hay Street

Column lighting will provide additional pedestrian level lighting to this paved movement zone, supplementary to lighting of the Light Rail corridor.



Figure 6.4.1 Haymarket Lighting Strategy

### ① Pole Top Lights



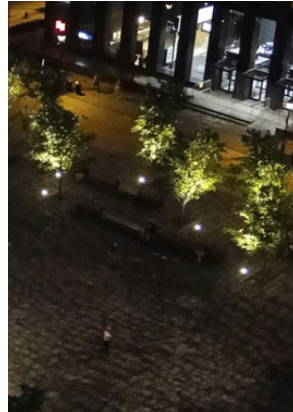
*Pole top lighting will be used to illuminate the boulevard to safe lighting levels*

### ② Column Lights



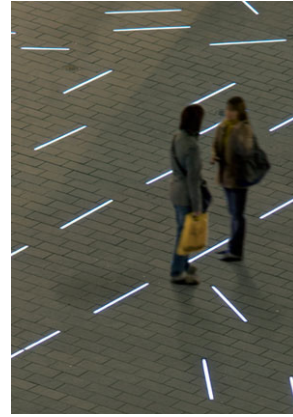
*Column lighting will provide additional safety as well as feature lighting in pedestrian pavement zones such as Hay Street*

### ③ In Ground Up lights



*Uplights will be used to highlight tree canopies, furniture and water features in focal areas*

### ④ Feature Lighting



*Feature lighting will be used to create atmosphere and visual interest at pavement level in Haymarket Square and the laneways*