

Novotel Sydney Darling Harbour

Position: P3A

Level: 03

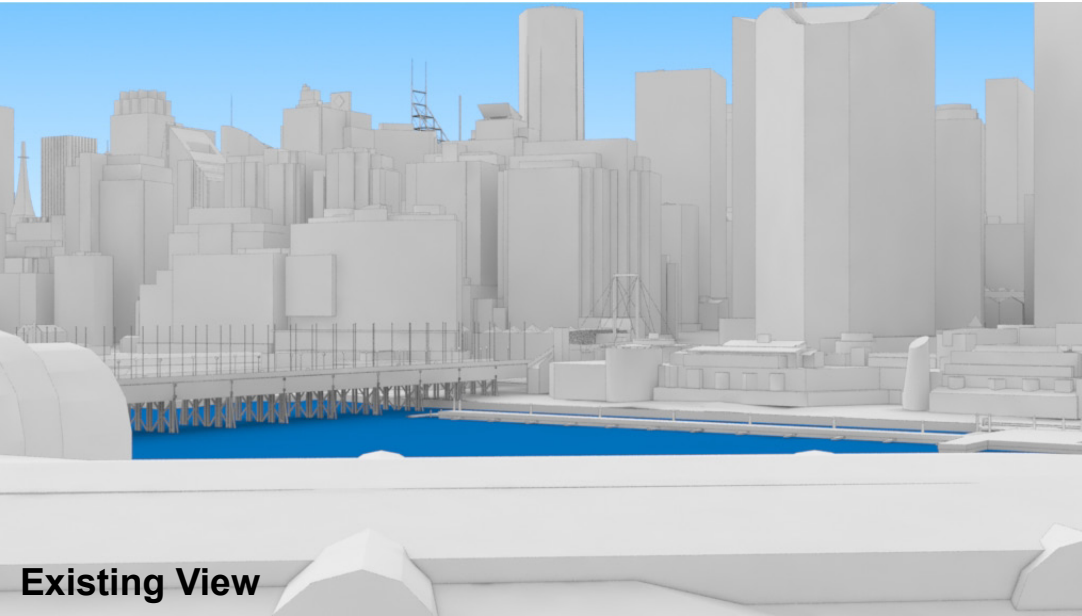
RL: 28.00 (Camera Height)

FOR INFORMATION ONLY

The Hotel shown in these images does not form part of this development application (and will be the subject of a separate development assessment process) and is included for information and broader illustrative purposes. Illustrative designs of built forms in the Haymarket precinct do not form part of this development application (and will be the subject of separate development assessment processes) and is shown for information and broader illustrative purposes. These images are produced here for view analysis purposes only.

LEGEND: 12

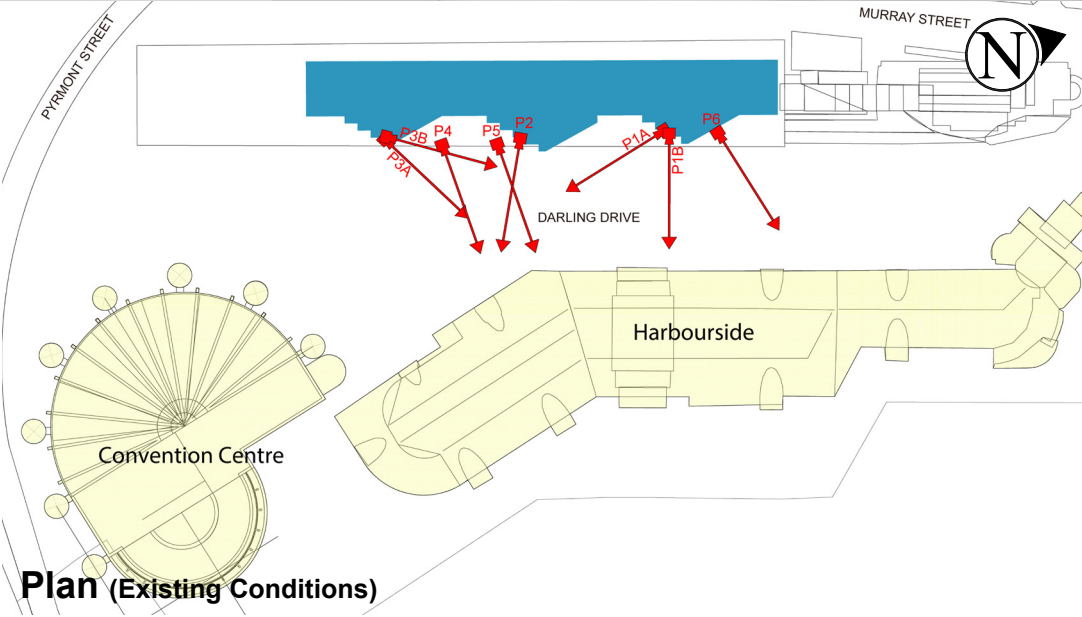
- Key Building
- Neighbouring Buildings
- View Direction (50mm Camera)
- Camera Position
- Hotel (subject of a future separate DA.)



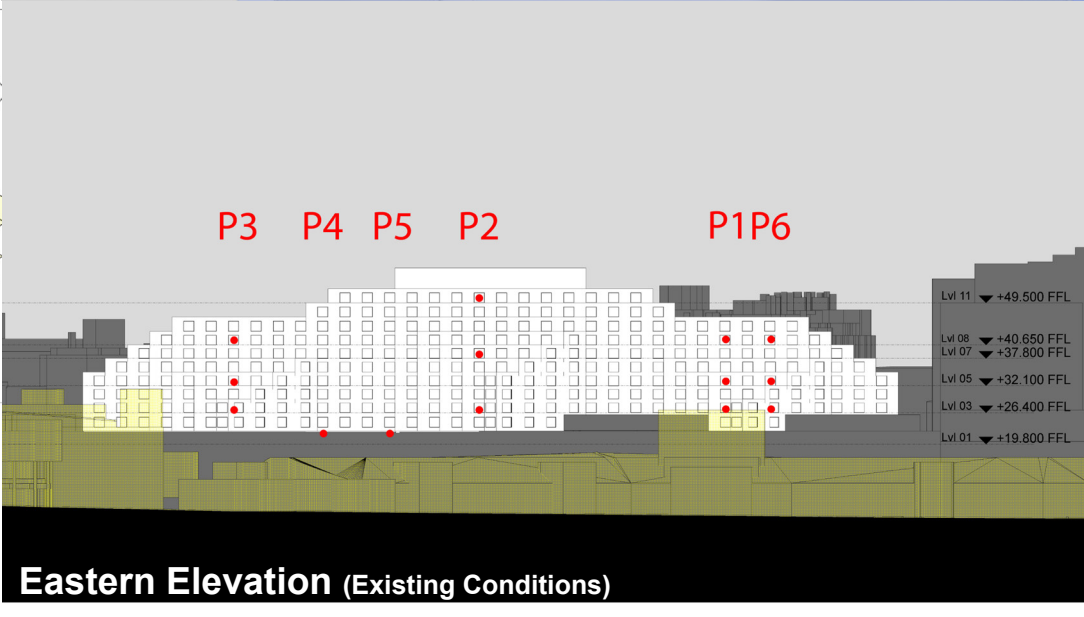
Existing View



Proposed View



Plan (Existing Conditions)



Eastern Elevation (Existing Conditions)

Novotel Sydney Darling Harbour

Position: P4
Level: 01 (Balcony)
RL: 21.32 (Camera Height)

FOR INFORMATION ONLY
The Hotel shown in these images does not form part of this development application (and will be the subject of a separate development assessment process) and is included for information and broader illustrative purposes. Illustrative designs of built forms in the Haymarket precinct do not form part of this development application (and will be the subject of separate development assessment processes) and is shown for information and broader illustrative purposes. These images are produced here for view analysis purposes only.

LEGEND:

Key Building

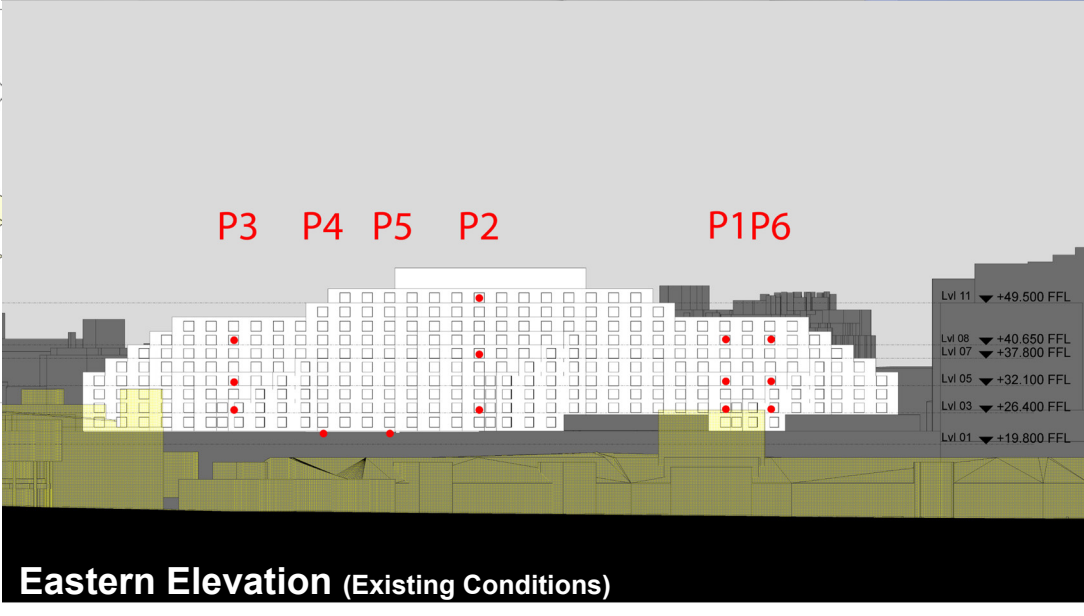
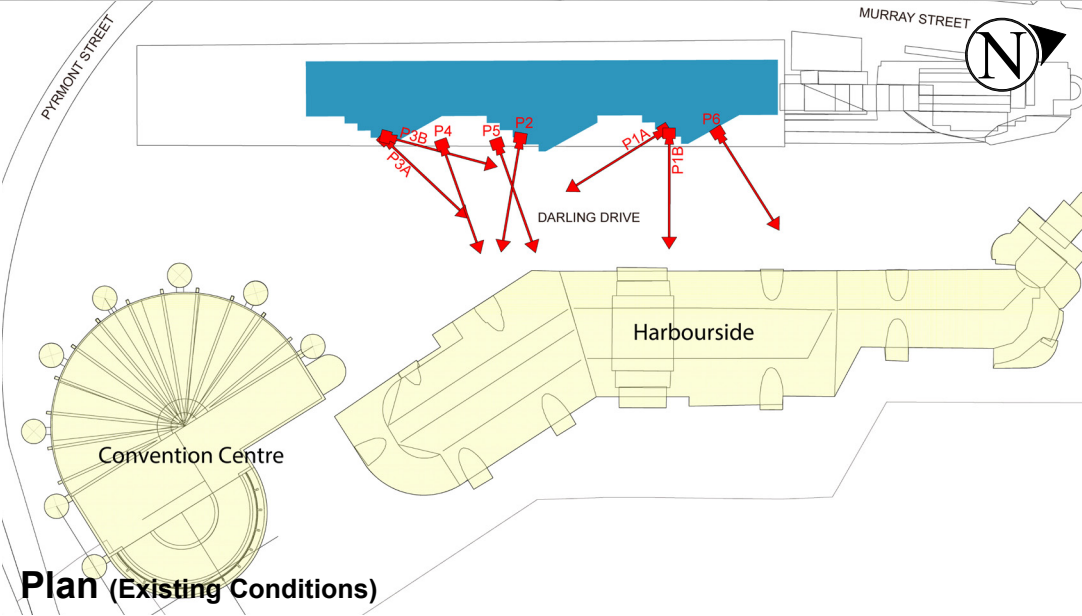
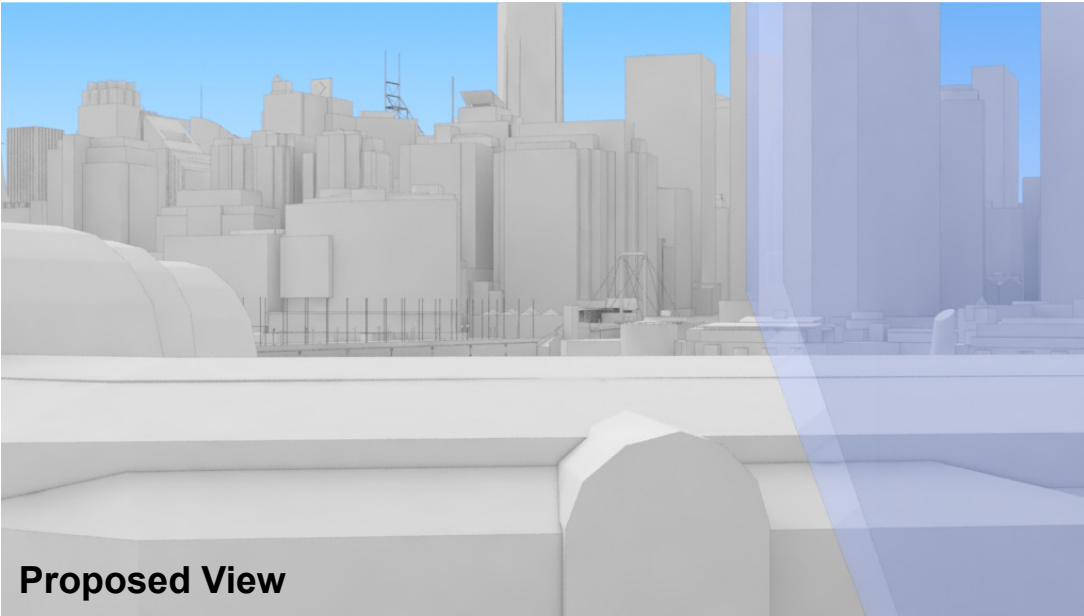
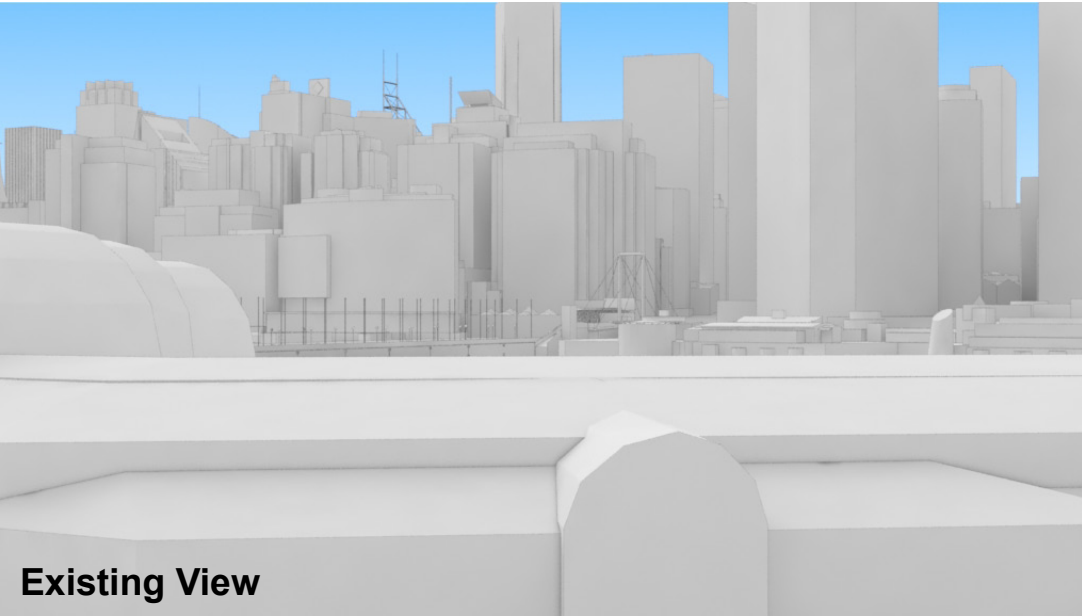
Neighbouring Buildings

View Direction (50mm Camera)

Camera Position

Hotel (subject of a future separate DA.)

16





SICEEP-Novotel Deck 1 E EXISTING



SICEEP-Novotel Deck 1 E



SICEEP-Novotel Deck 1 SE EXISTING



SICEEP-Novotel Deck 1 SE



SICEEP-Novotel Deck 2 EXISTING



SICEEP-Novotel Deck 2