

# Peak Apartments

Position: P2B

Level: 10

RL: 41.225 (Camera Height)

FOR INFORMATION ONLY

Illustrative designs of built forms in the Haymarket precinct do not form part of this development application (and will be the subject of separate development assessment processes) and is shown for information and broader illustrative purposes.

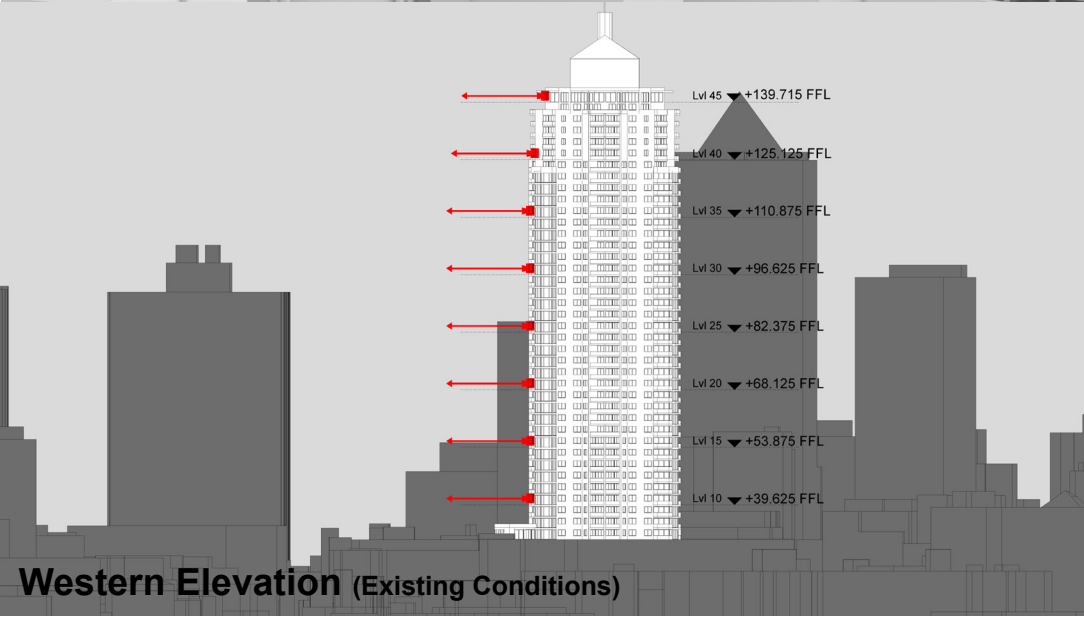
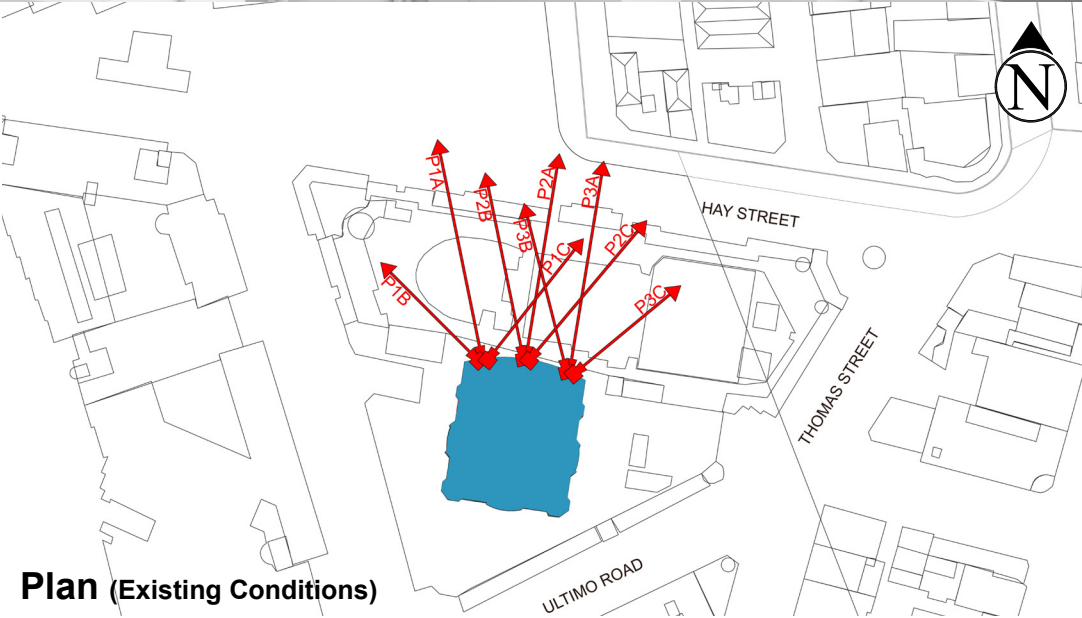
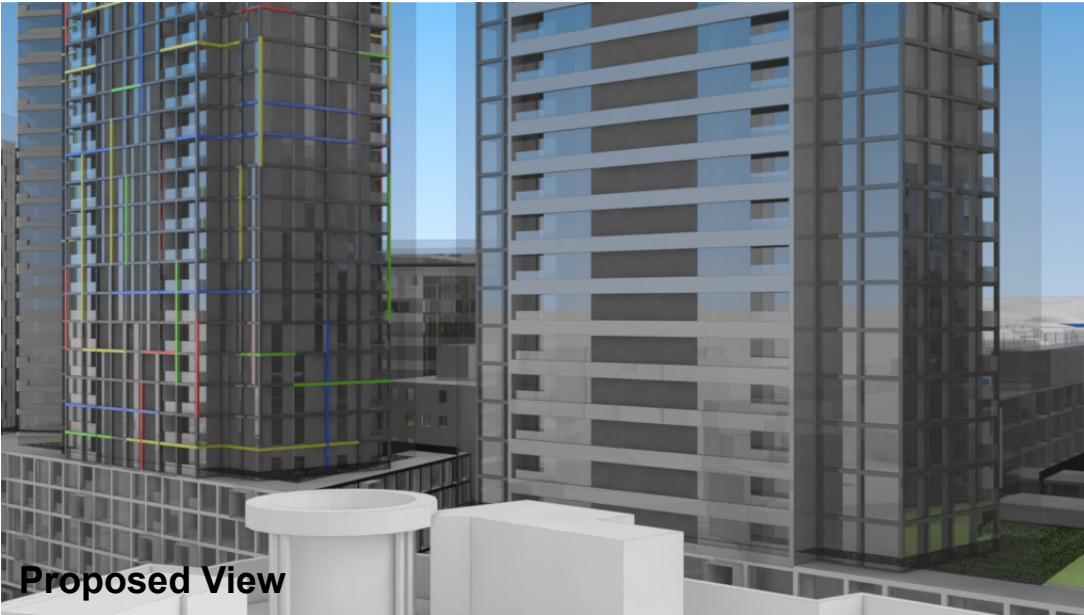
These images are produced here for view analysis purposes only.

LEGEND: 96

Key Building

View Direction (50mm Camera)

Building envelope in the Haymarket Precinct (Subject of this DA)



# Peak Apartments

Position: P2C

Level: 45

RL: 140.975 (Camera Height)

FOR INFORMATION ONLY

Illustrative designs of built forms in the Haymarket precinct do not form part of this development application (and will be the subject of separate development assessment processes) and is shown for information and broader illustrative purposes.

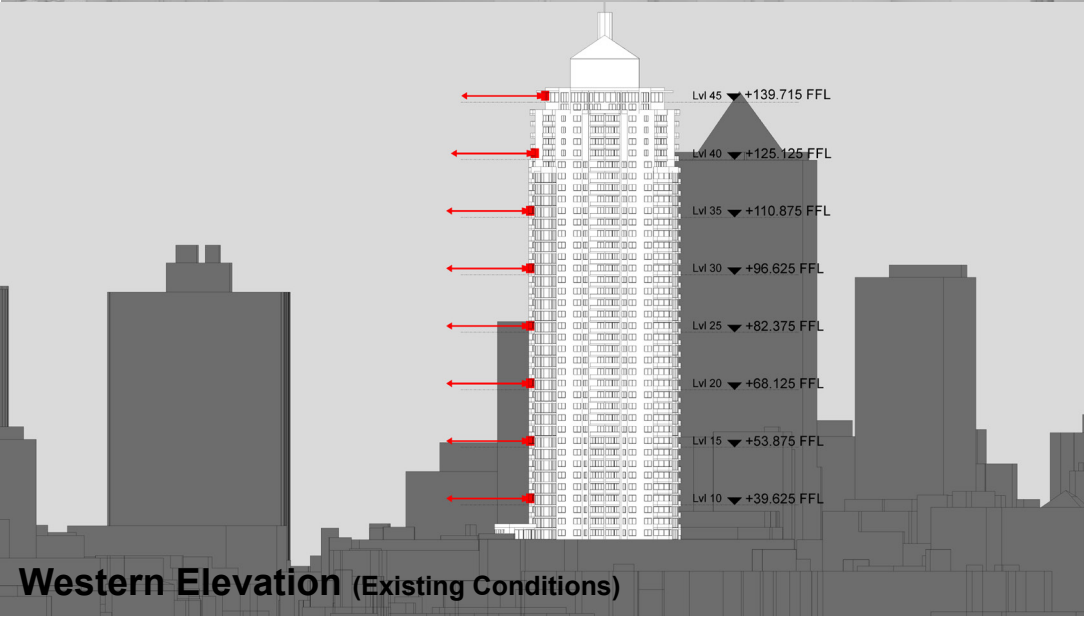
These images are produced here for view analysis purposes only.

LEGEND: 97

Key Building

View Direction (50mm Camera)

Building envelope in the Haymarket Precinct (Subject of this DA)



# Peak Apartments

Position: P2C

Level: 40

RL: 126.725 (Camera Height)

FOR INFORMATION ONLY

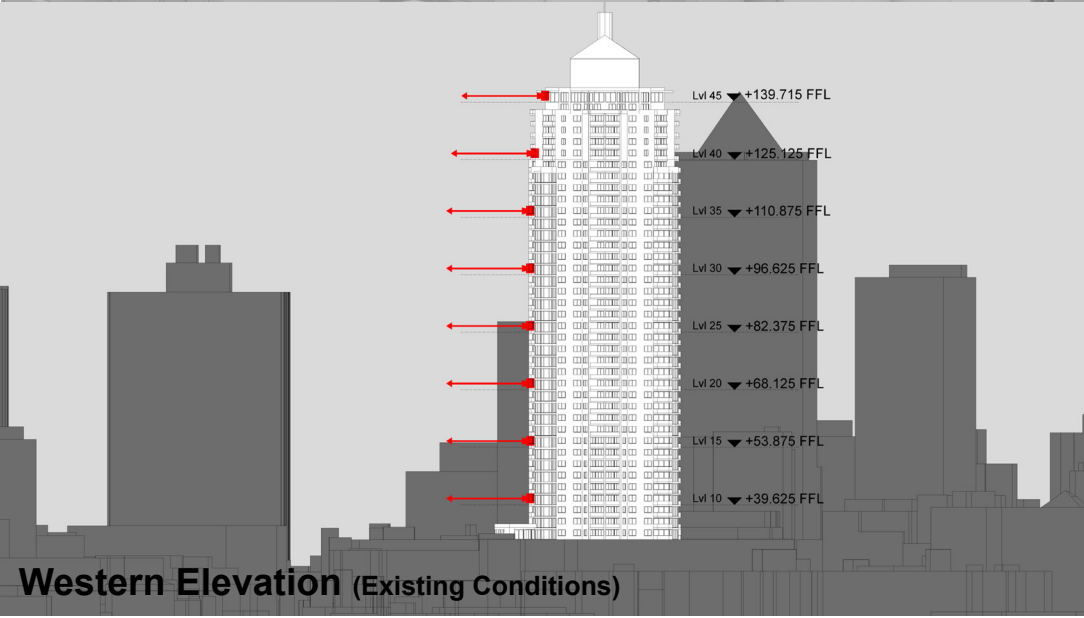
Illustrative designs of built forms in the Haymarket precinct do not form part of this development application (and will be the subject of separate development assessment processes) and is shown for information and broader illustrative purposes.

These images are produced here for view analysis purposes only.

Key Building

View Direction (50mm Camera)

Building envelope in the Haymarket Precinct (Subject of this DA)





# Peak Apartments

Position: P2C

Level: 35

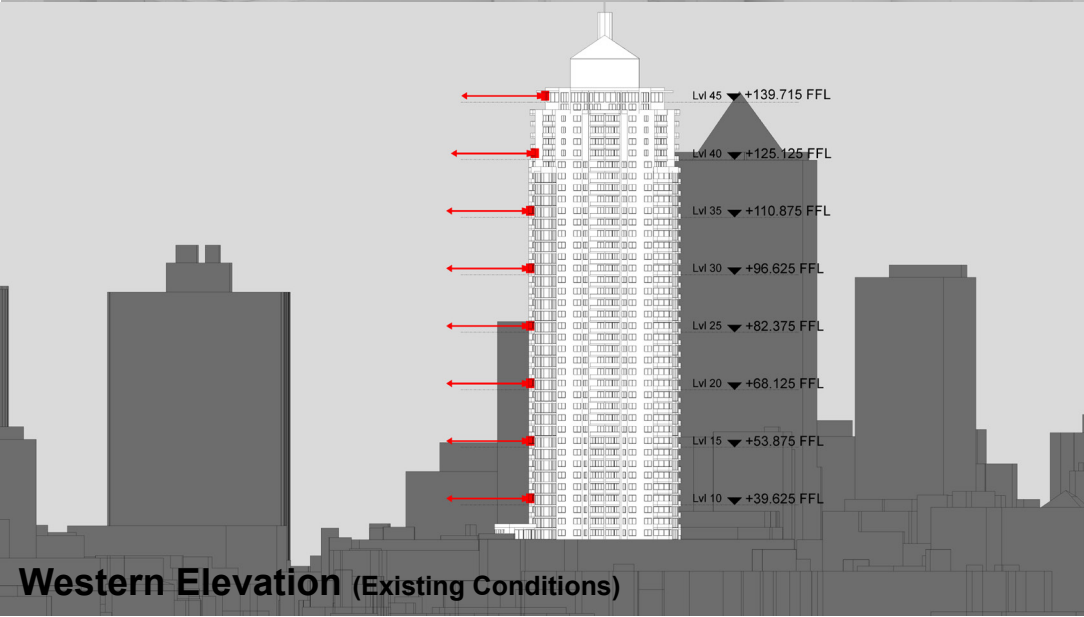
RL: 112.475 (Camera Height)

FOR INFORMATION ONLY

Illustrative designs of built forms in the Haymarket precinct do not form part of this development application (and will be the subject of separate development assessment processes) and is shown for information and broader illustrative purposes.

These images are produced here for view analysis purposes only.

- Key Building
- View Direction (50mm Camera)
- Building envelope in the Haymarket Precinct (Subject of this DA)



# Peak Apartments

Position: P2C

Level: 30

RL: 98.225 (Camera Height)

FOR INFORMATION ONLY

Illustrative designs of built forms in the Haymarket precinct do not form part of this development application (and will be the subject of separate development assessment processes) and is shown for information and broader illustrative purposes.

These images are produced here for view analysis purposes only.

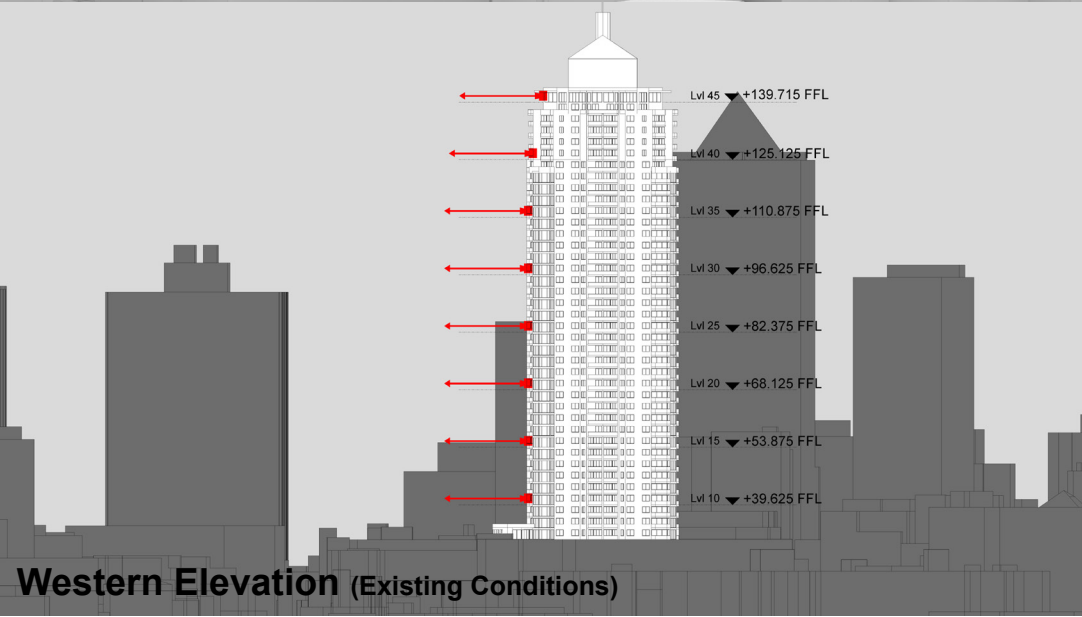
100

LEGEND:

Key Building

View Direction (50mm Camera)

Building envelope in the Haymarket Precinct (Subject of this DA)



# Peak Apartments

Position: P2C

Level: 25

RL: 83.975 (Camera Height)

FOR INFORMATION ONLY

Illustrative designs of built forms in the Haymarket precinct do not form part of this development application (and will be the subject of separate development assessment processes) and is shown for information and broader illustrative purposes.

These images are produced here for view analysis purposes only.

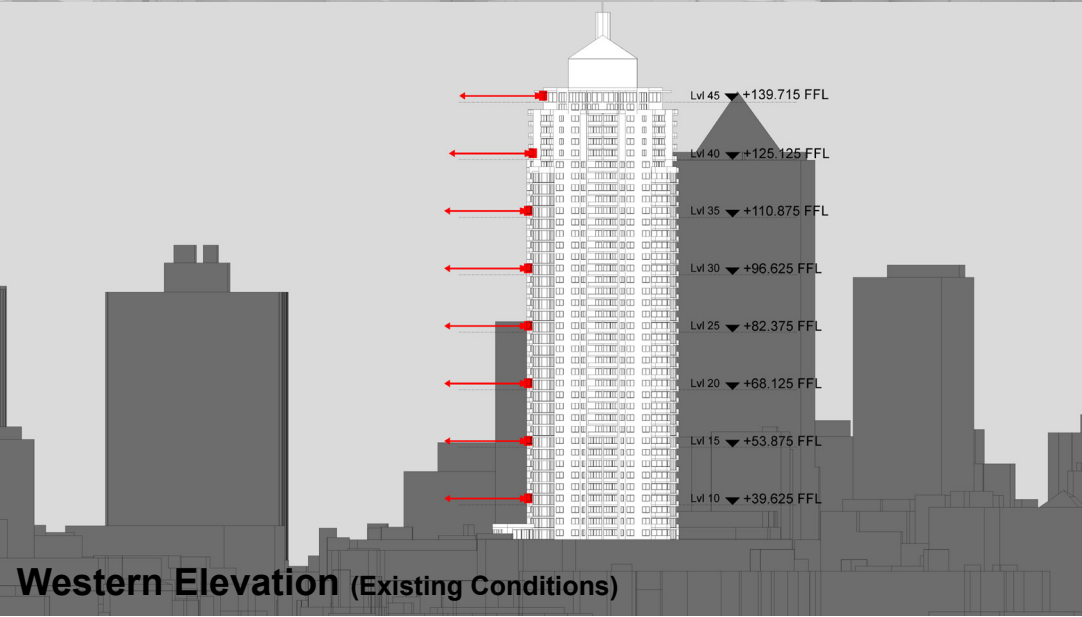
LEGEND:

101

Key Building

View Direction (50mm Camera)

Building envelope in the Haymarket Precinct (Subject of this DA)



# Peak Apartments

Position: P2C

Level: 20

RL: 69.725 (Camera Height)

FOR INFORMATION ONLY

Illustrative designs of built forms in the Haymarket precinct do not form part of this development application (and will be the subject of separate development assessment processes) and is shown for information and broader illustrative purposes.

These images are produced here for view analysis purposes only.

LEGEND: 102

Key Building

View Direction (50mm Camera)

Building envelope in the Haymarket Precinct (Subject of this DA)



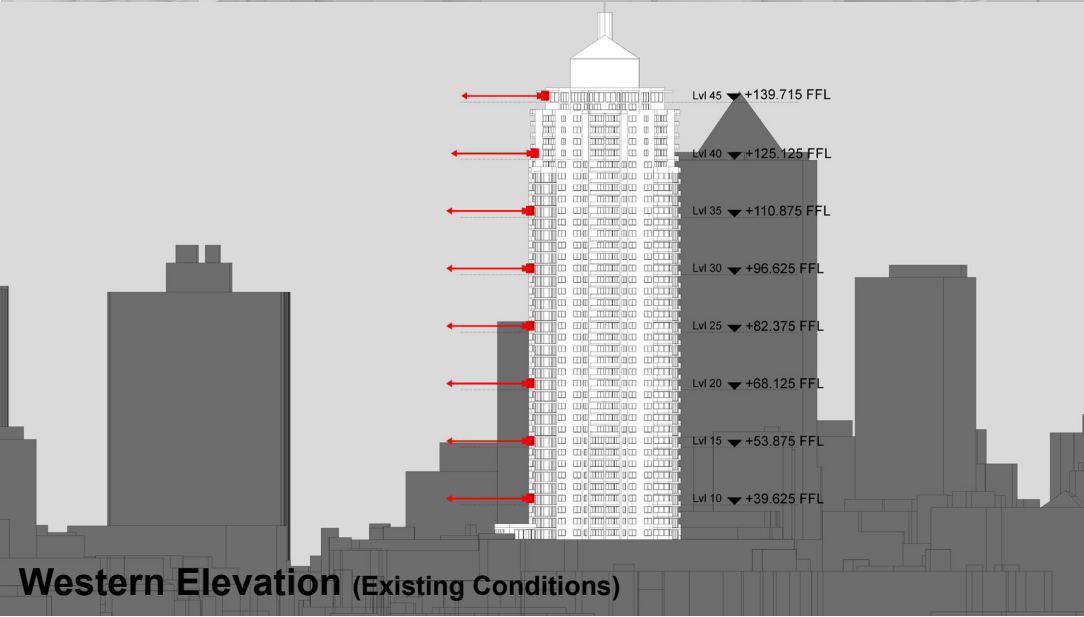
Existing View



Proposed View



Plan (Existing Conditions)



Western Elevation (Existing Conditions)



# Peak Apartments

Position: P2C

Level: 15

RL: 55.475 (Camera Height)

FOR INFORMATION ONLY

Illustrative designs of built forms in the Haymarket precinct do not form part of this development application (and will be the subject of separate development assessment processes) and is shown for information and broader illustrative purposes.

These images are produced here for view analysis purposes only.

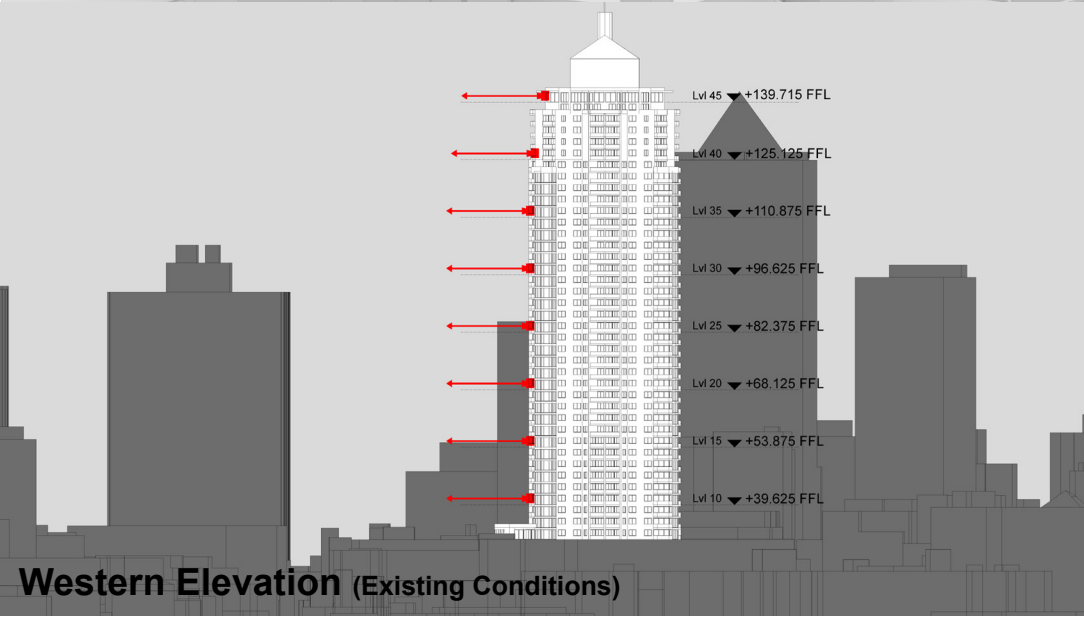
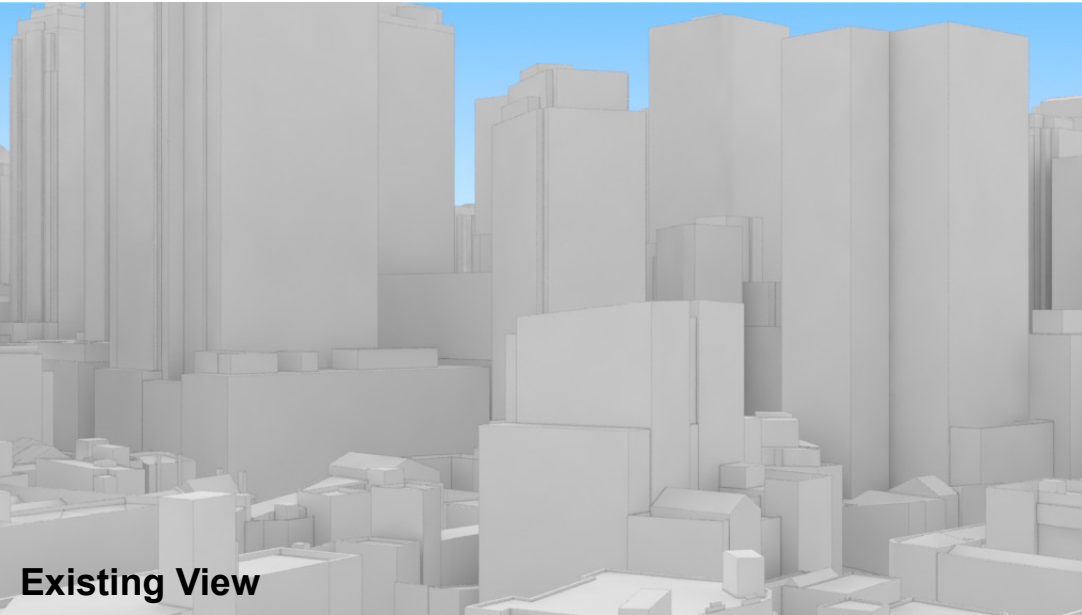
LEGEND:

Key Building

View Direction (50mm Camera)

Building envelope in the Haymarket Precinct (Subject of this DA)

103





# Peak Apartments

Position: P2C

Level: 10

RL: 41.225 (Camera Height)

FOR INFORMATION ONLY

Illustrative designs of built forms in the Haymarket precinct do not form part of this development application (and will be the subject of separate development assessment processes) and is shown for information and broader illustrative purposes.

These images are produced here for view analysis purposes only.

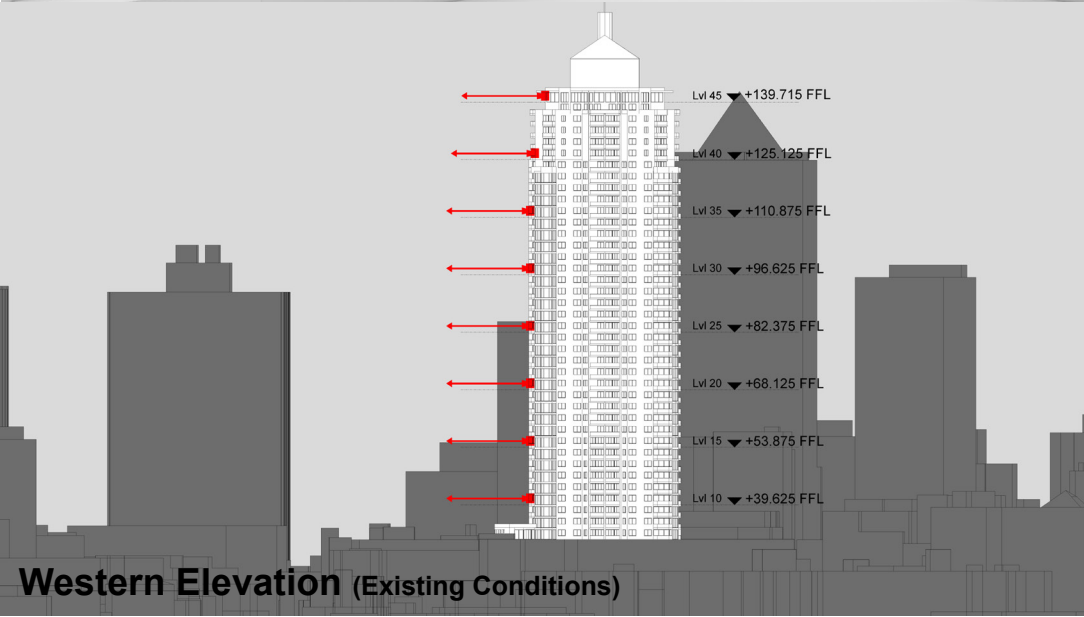
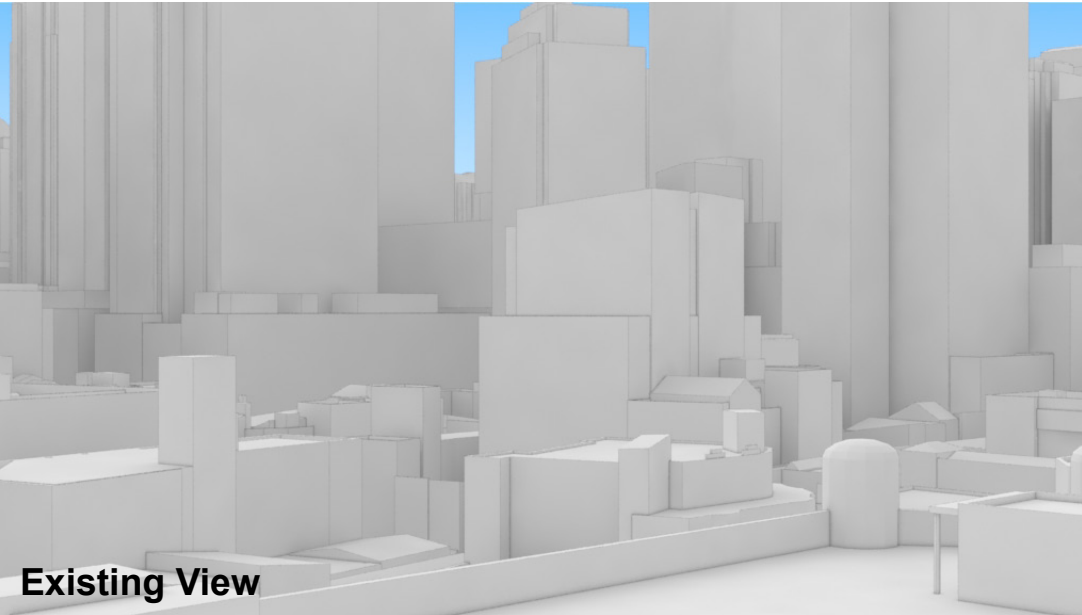
LEGEND:

Key Building

View Direction (50mm Camera)

Building envelope in the Haymarket Precinct (Subject of this DA)

104



# Peak Apartments

Position: P3A

Level: 45

RL: 140.975 (Camera Height)

FOR INFORMATION ONLY

Illustrative designs of built forms in the Haymarket precinct do not form part of this development application (and will be the subject of separate development assessment processes) and is shown for information and broader illustrative purposes.

These images are produced here for view analysis purposes only.

LEGEND: 105

Key Building

View Direction (50mm Camera)

Building envelope in the Haymarket Precinct (Subject of this DA)



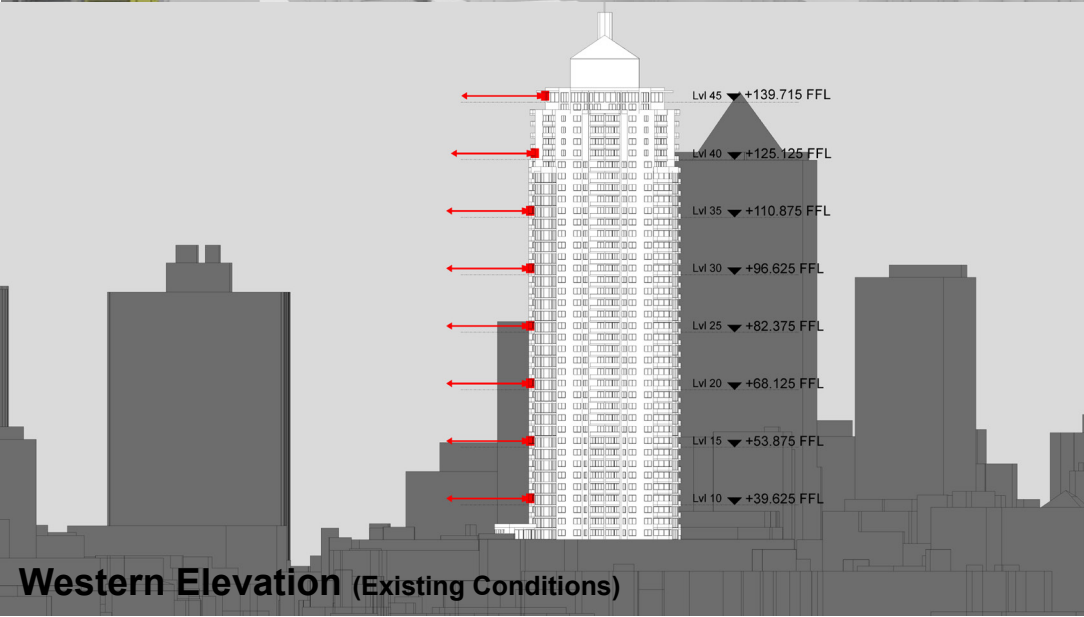
Existing View



Proposed View



Plan (Existing Conditions)



Western Elevation (Existing Conditions)

# Peak Apartments

Position: P3A

Level: 40

RL: 126.725 (Camera Height)

FOR INFORMATION ONLY

Illustrative designs of built forms in the Haymarket precinct do not form part of this development application (and will be the subject of separate development assessment processes) and is shown for information and broader illustrative purposes.

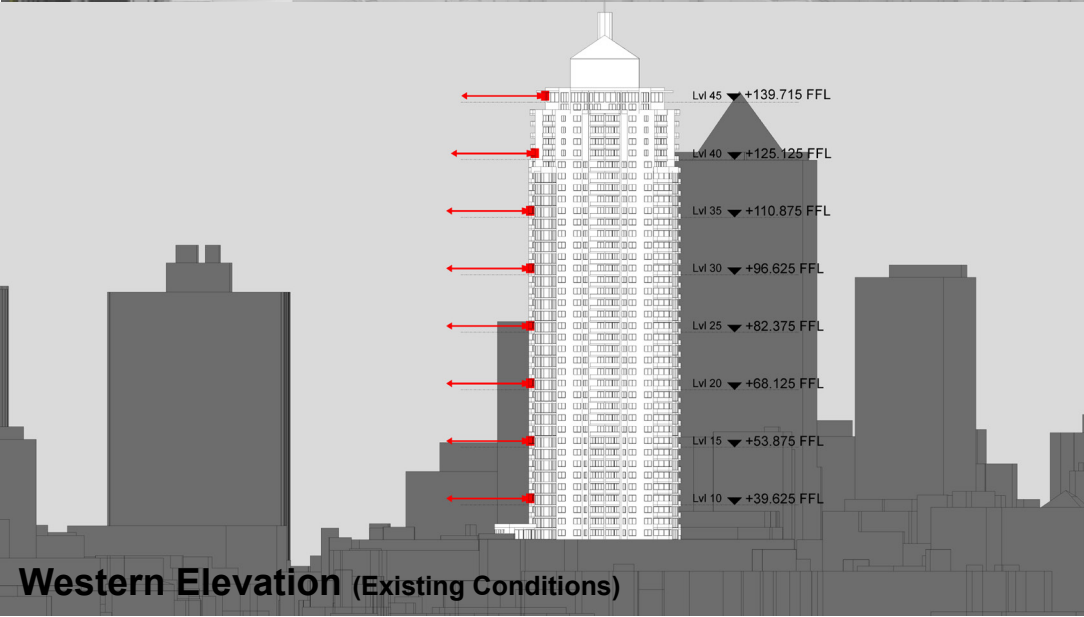
These images are produced here for view analysis purposes only.

LEGEND: 106

Key Building

View Direction (50mm Camera)

Building envelope in the Haymarket Precinct (Subject of this DA)





# Peak Apartments

Position: P3A

Level: 35

RL: 112.475 (Camera Height)

FOR INFORMATION ONLY

Illustrative designs of built forms in the Haymarket precinct do not form part of this development application (and will be the subject of separate development assessment processes) and is shown for information and broader illustrative purposes.

These images are produced here for view analysis purposes only.

LEGEND: 107

Key Building

View Direction (50mm Camera)

Building envelope in the Haymarket Precinct (Subject of this DA)





# Peak Apartments

Position: P3A

Level: 30

RL: 98.225 (Camera Height)

FOR INFORMATION ONLY

Illustrative designs of built forms in the Haymarket precinct do not form part of this development application (and will be the subject of separate development assessment processes) and is shown for information and broader illustrative purposes.

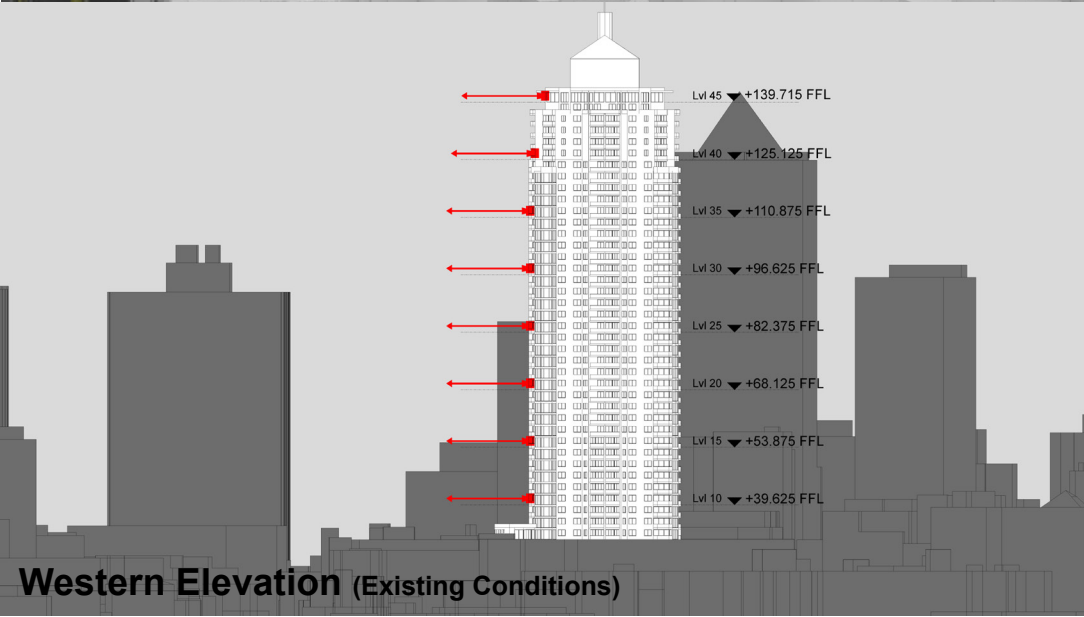
These images are produced here for view analysis purposes only.

LEGEND: 108

Key Building

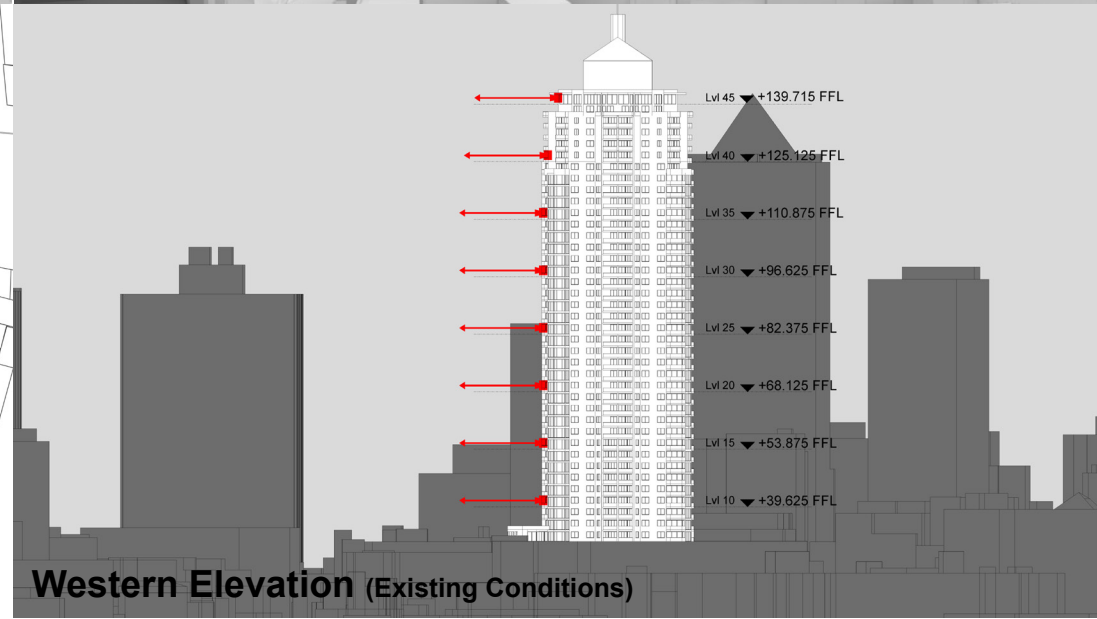
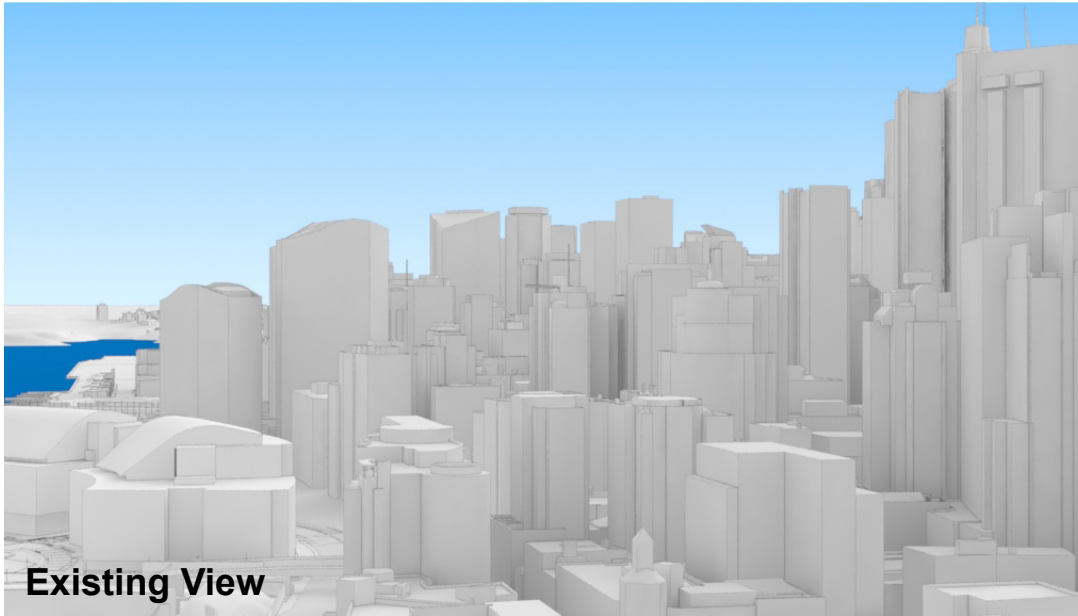
View Direction (50mm Camera)

Building envelope in the Haymarket Precinct (Subject of this DA)



These images are produced here for view analysis purposes only.

- Building envelope in the Haymarket Precinct (Subject of this DA)



# Peak Apartments

Position: P3A

Level: 20

RL: 69.725 (Camera Height)

FOR INFORMATION ONLY

Illustrative designs of built forms in the Haymarket precinct do not form part of this development application (and will be the subject of separate development assessment processes) and is shown for information and broader illustrative purposes.

These images are produced here for view analysis purposes only.

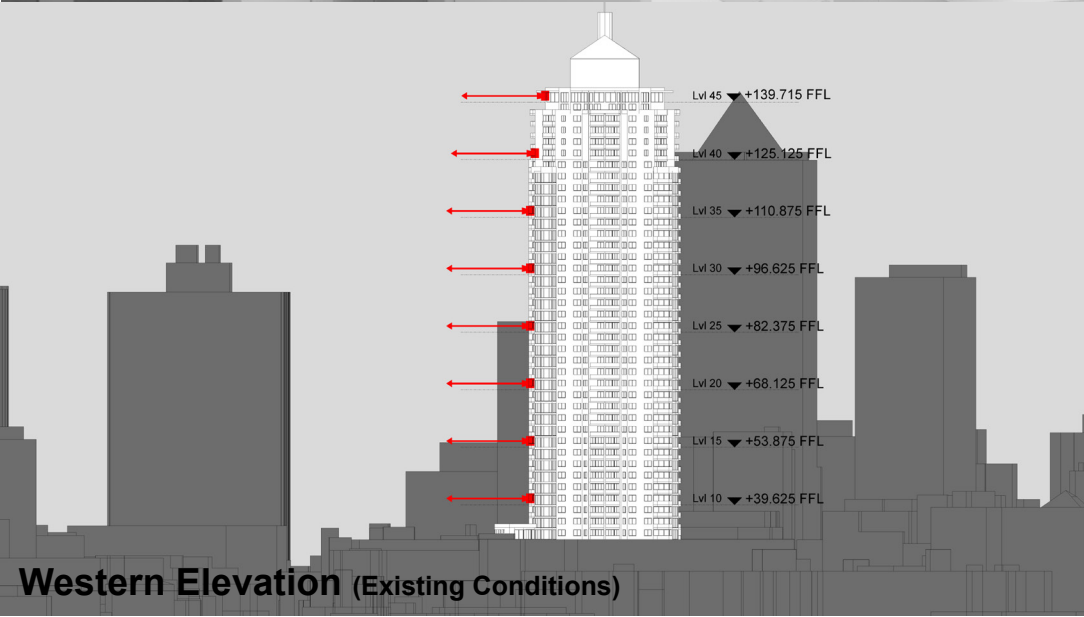
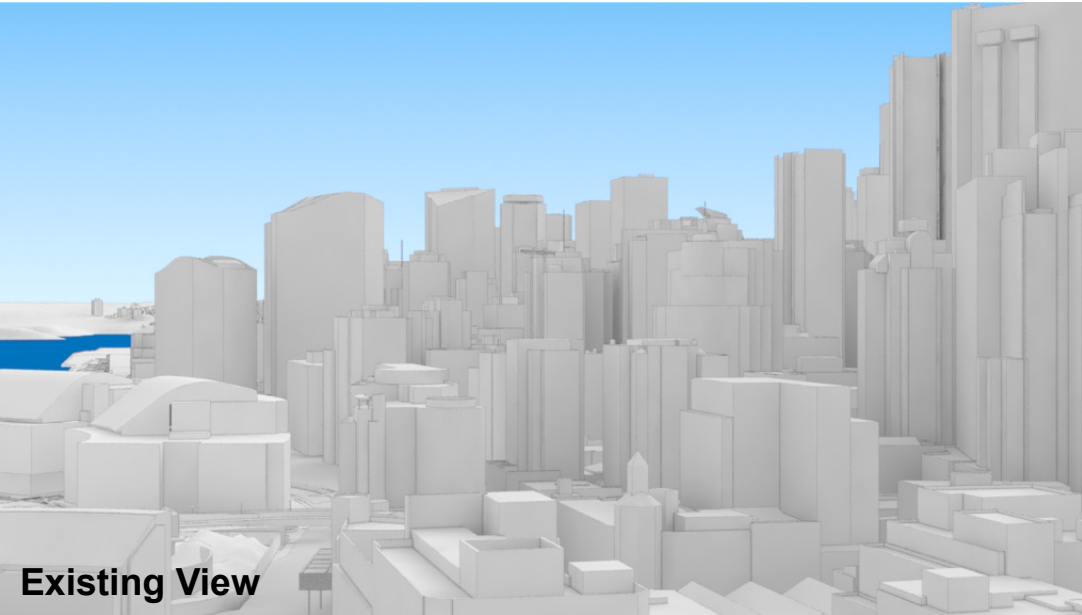
LEGEND:

Key Building

View Direction (50mm Camera)

Building envelope in the Haymarket Precinct (Subject of this DA)

110





# Peak Apartments

Position: P3A

Level: 15

RL: 55.475 (Camera Height)

FOR INFORMATION ONLY

Illustrative designs of built forms in the Haymarket precinct do not form part of this development application (and will be the subject of separate development assessment processes) and is shown for information and broader illustrative purposes.

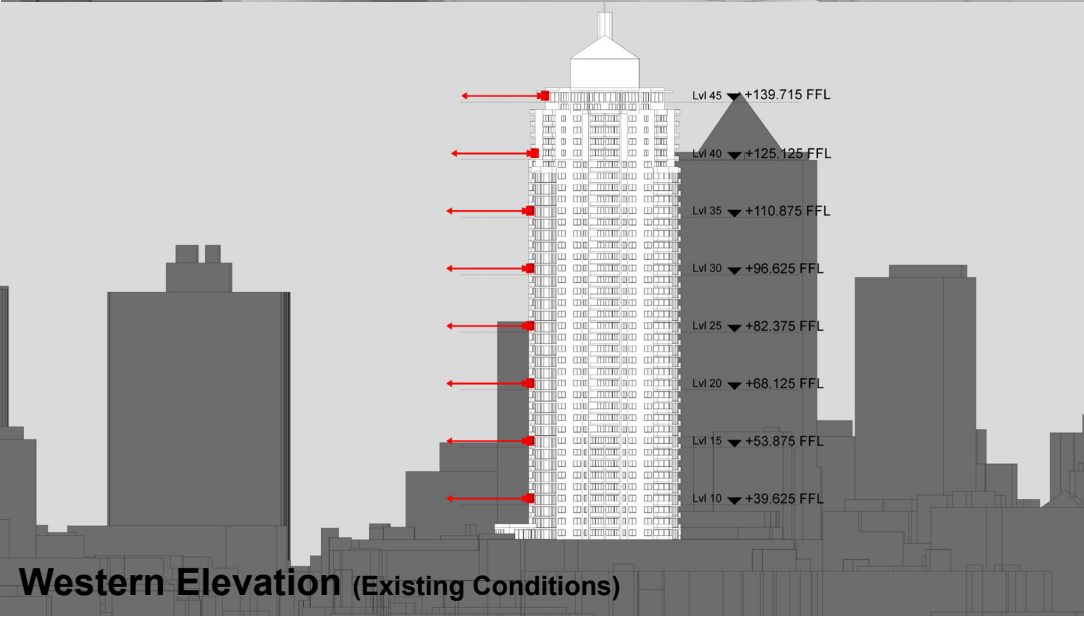
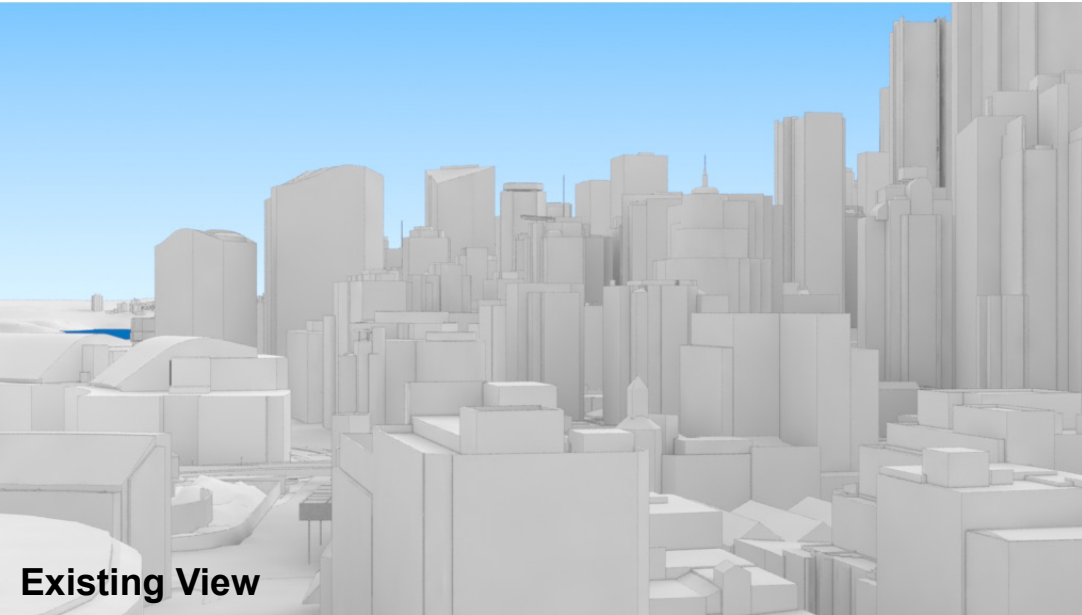
These images are produced here for view analysis purposes only.

LEGEND: 111

Key Building

View Direction (50mm Camera)

Building envelope in the Haymarket Precinct (Subject of this DA)





# Peak Apartments

Position: P3A

Level: 10

RL: 41.225 (Camera Height)

FOR INFORMATION ONLY

Illustrative designs of built forms in the Haymarket precinct do not form part of this development application (and will be the subject of separate development assessment processes) and is shown for information and broader illustrative purposes.

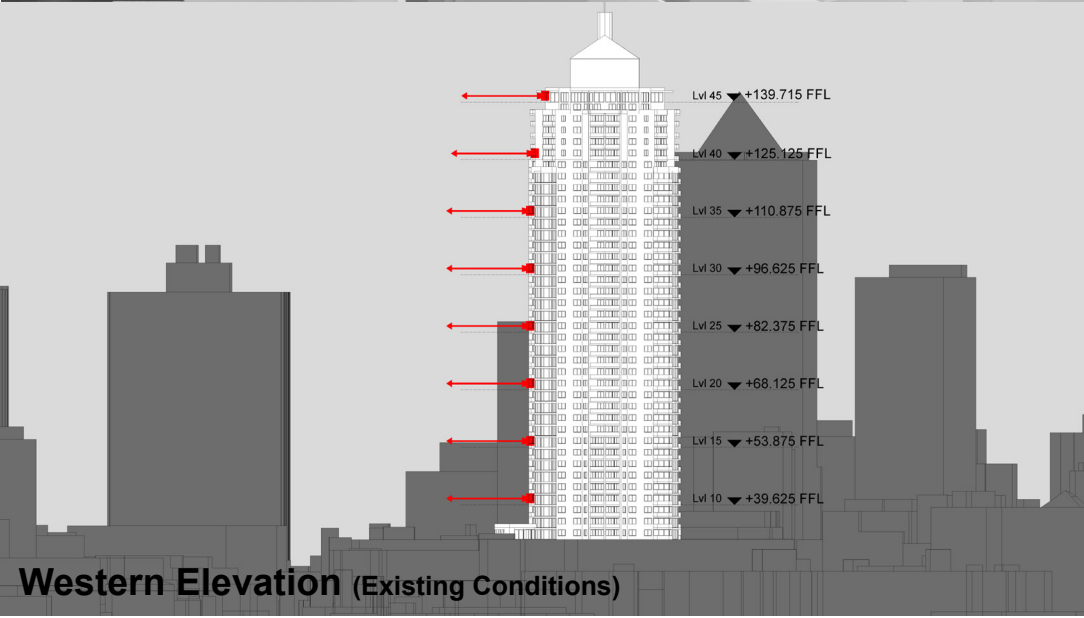
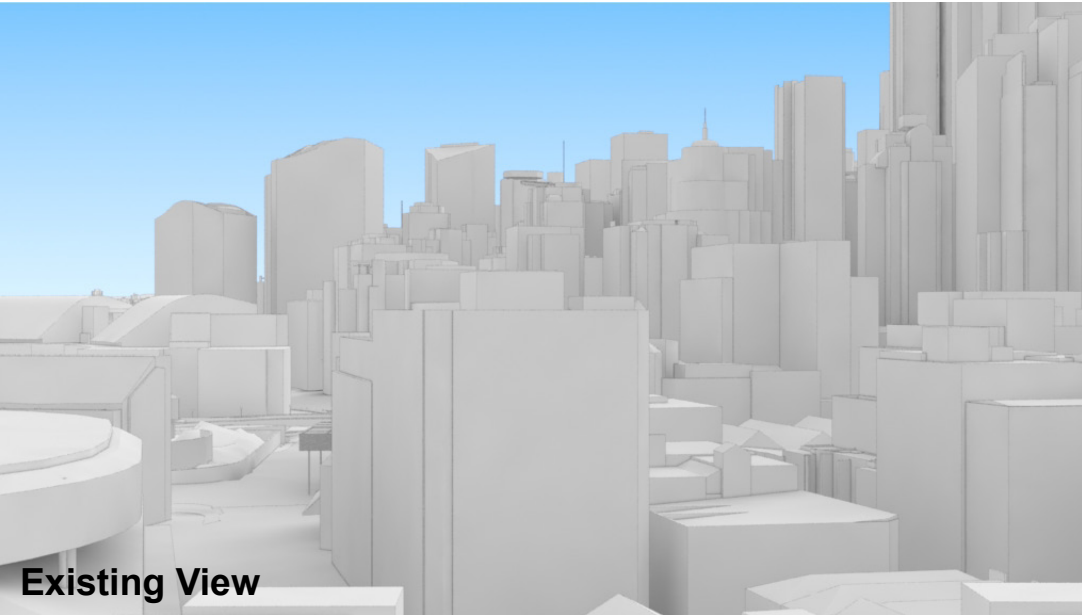
These images are produced here for view analysis purposes only.

LEGEND: 112

Key Building

View Direction (50mm Camera)

Building envelope in the Haymarket Precinct (Subject of this DA)



# Peak Apartments

Position: P3B

Level: 45

RL: 140.975 (Camera Height)

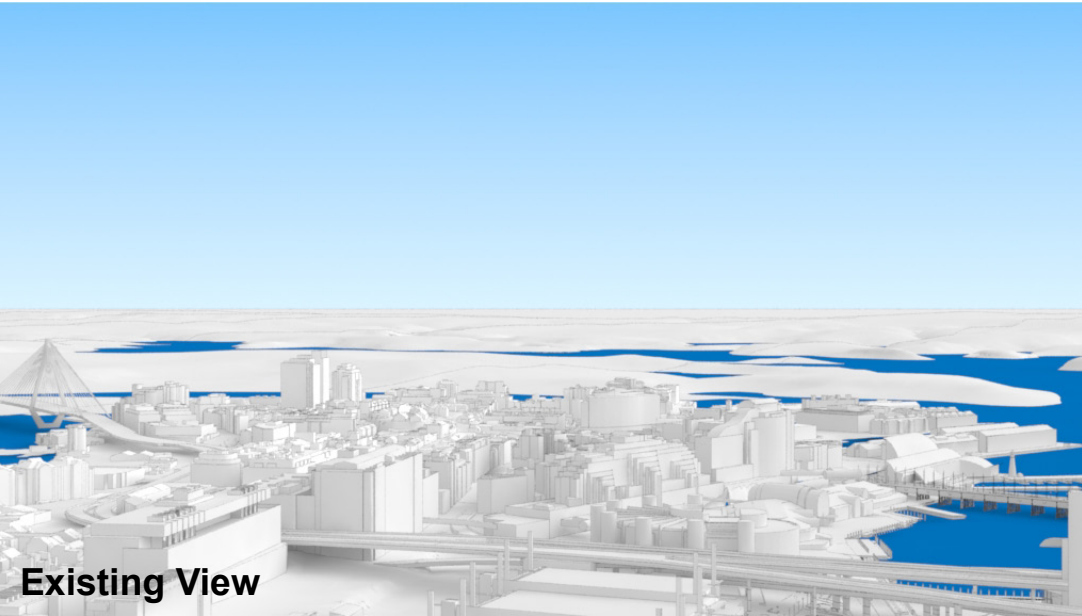
FOR INFORMATION ONLY

Illustrative designs of built forms in the Haymarket precinct do not form part of this development application (and will be the subject of separate development assessment processes) and is shown for information and broader illustrative purposes.

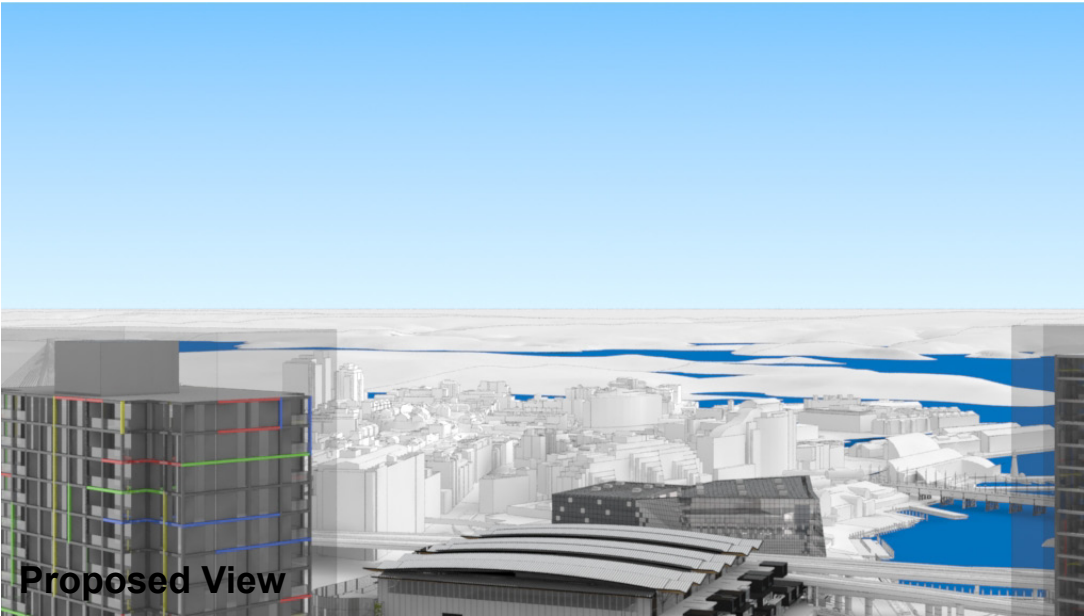
These images are produced here for view analysis purposes only.

LEGEND: 113

- Key Building
- View Direction (50mm Camera)
- Building envelope in the Haymarket Precinct (Subject of this DA)



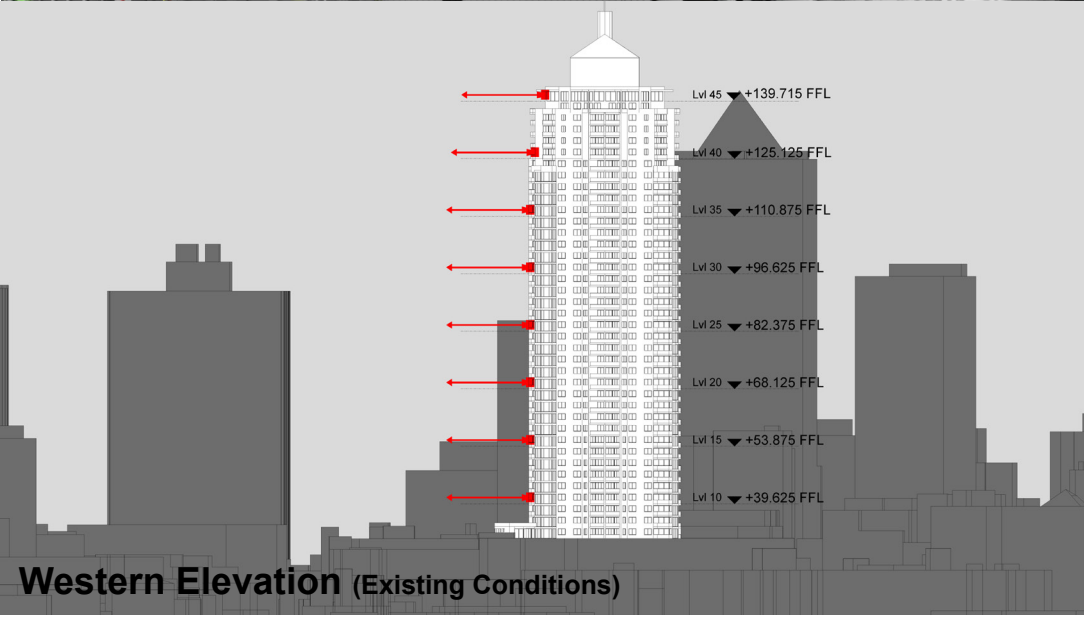
Existing View



Proposed View



Plan (Existing Conditions)



Western Elevation (Existing Conditions)

# Peak Apartments

Position: P3B

Level: 40

RL: 126.725 (Camera Height)

FOR INFORMATION ONLY

Illustrative designs of built forms in the Haymarket precinct do not form part of this development application (and will be the subject of separate development assessment processes) and is shown for information and broader illustrative purposes.

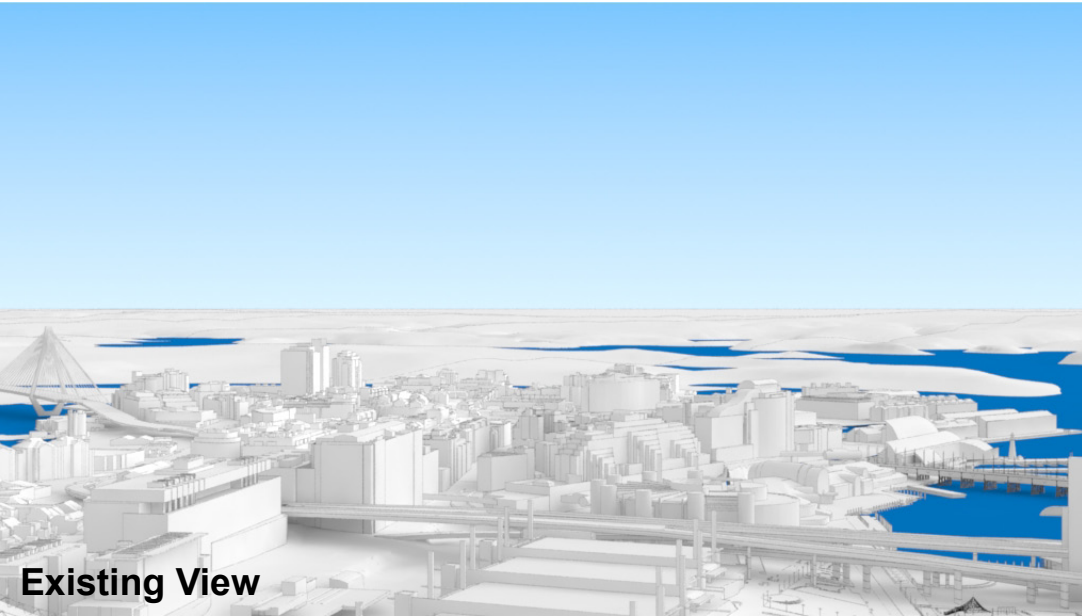
These images are produced here for view analysis purposes only.

LEGEND: 114

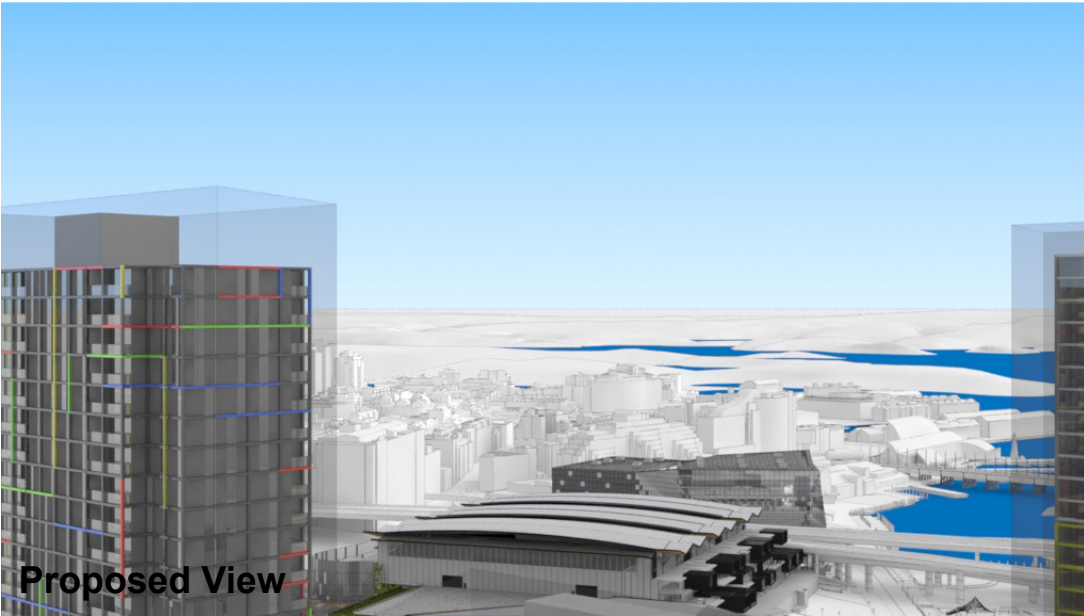
Key Building

View Direction (50mm Camera)

Building envelope in the Haymarket Precinct (Subject of this DA)



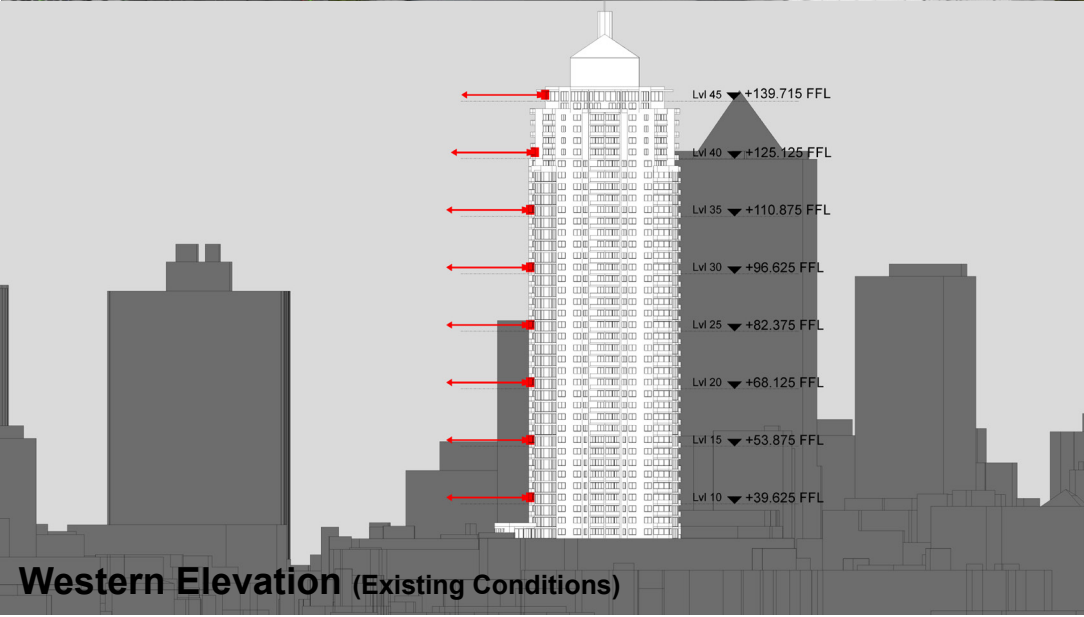
Existing View



Proposed View



Plan (Existing Conditions)



Western Elevation (Existing Conditions)



# Peak Apartments

Position: P3B

Level: 35

RL: 112.475 (Camera Height)

FOR INFORMATION ONLY

Illustrative designs of built forms in the Haymarket precinct do not form part of this development application (and will be the subject of separate development assessment processes) and is shown for information and broader illustrative purposes.

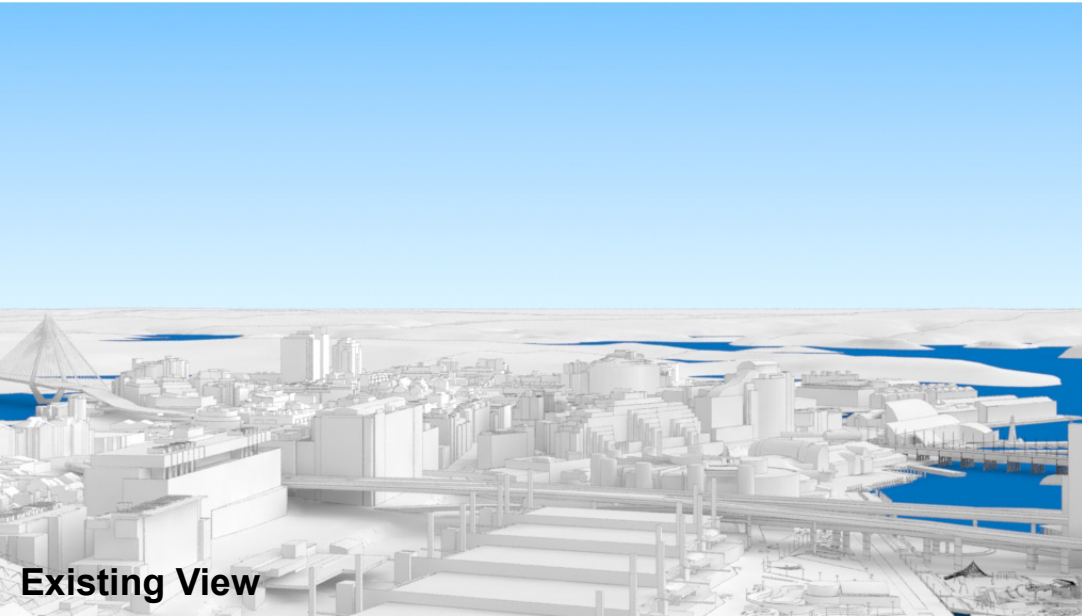
These images are produced here for view analysis purposes only.

LEGEND: 115

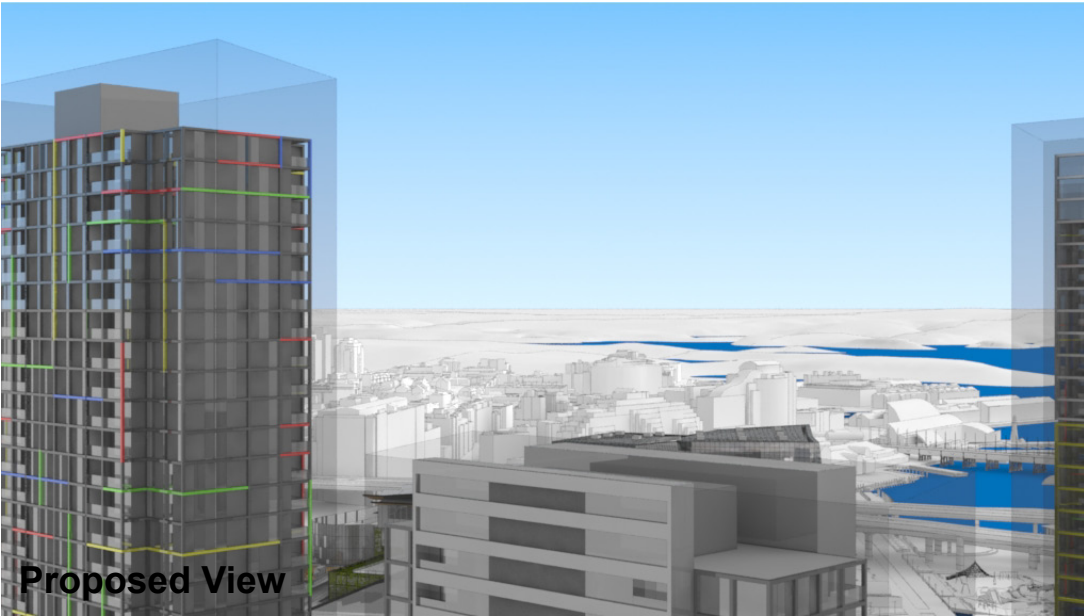
Key Building

View Direction (50mm Camera)

Building envelope in the Haymarket Precinct (Subject of this DA)



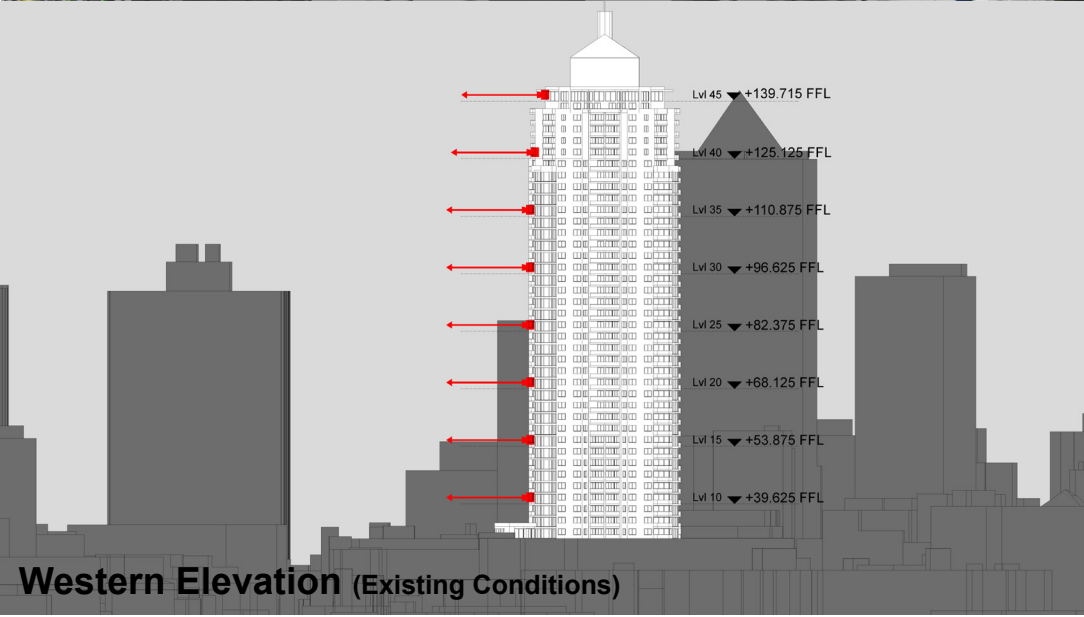
Existing View



Proposed View



Plan (Existing Conditions)



Western Elevation (Existing Conditions)