

# Novotel Sydney Darling Harbour

Position: P6

Level: 03

RL: 28.00 (Camera Height)

FOR INFORMATION ONLY

Illustrative designs of built forms in the Haymarket precinct do not form part of this development application (and will be the subject of separate development assessment processes) and is shown for information and broader illustrative purposes.  
These images are produced here for view analysis purposes only.

LEGEND:

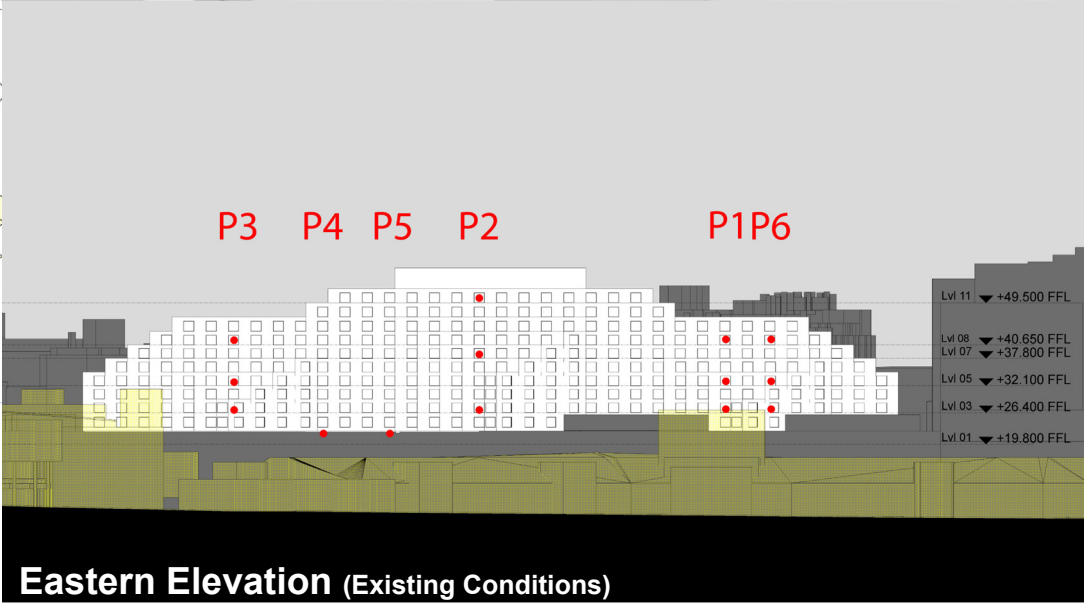
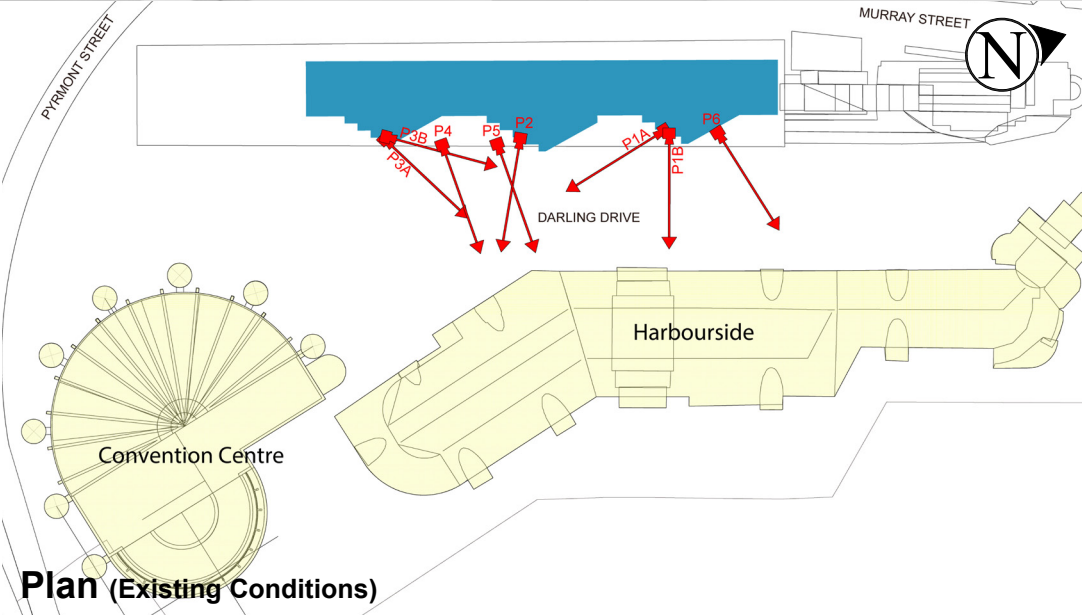
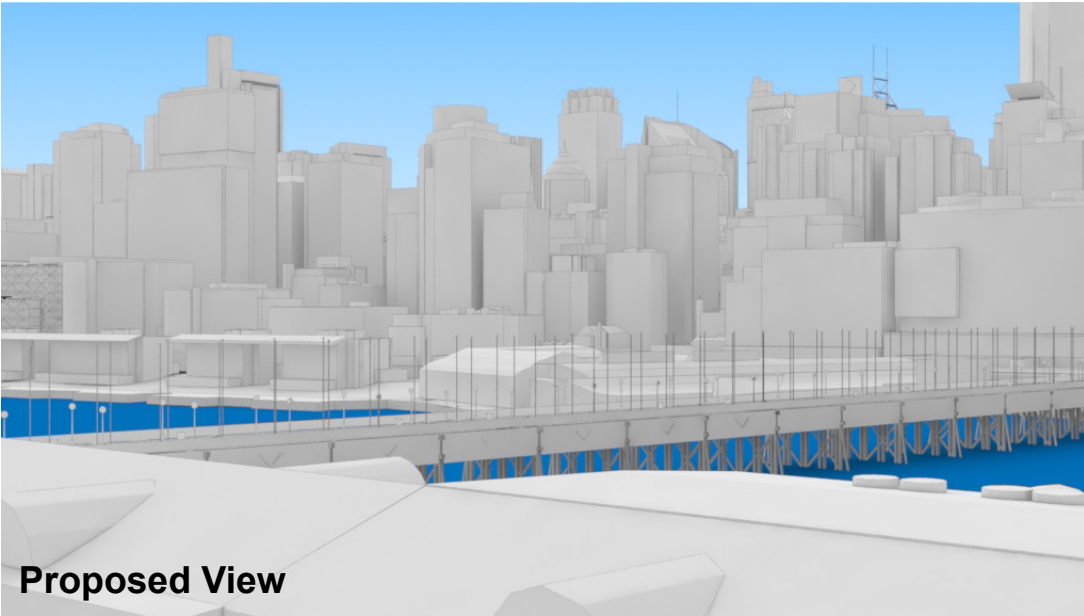
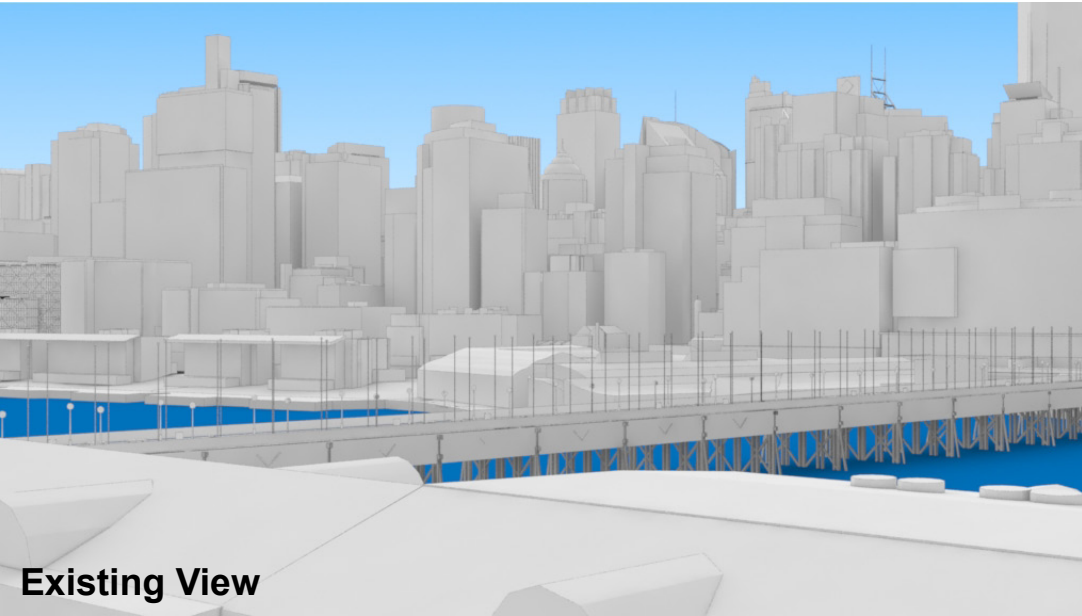
Key Building

Neighbouring Buildings

View Direction (50mm Camera)

Camera Position

20



# Novotel Sydney Darling Harbour

Position: P1A

Level: 08

RL: 42.250 (Camera Height)

FOR INFORMATION ONLY

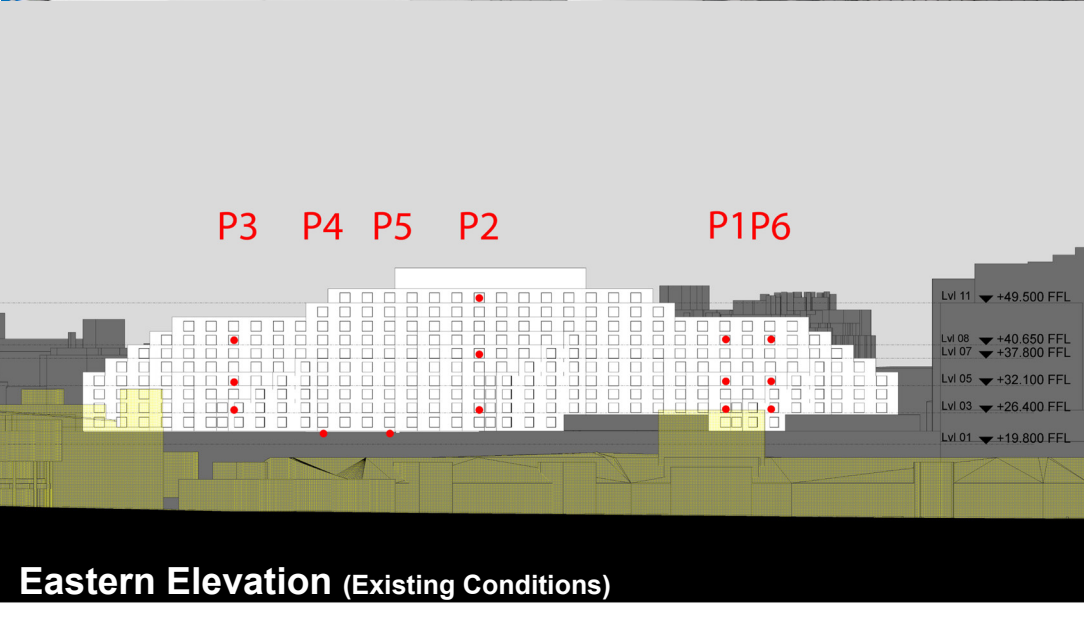
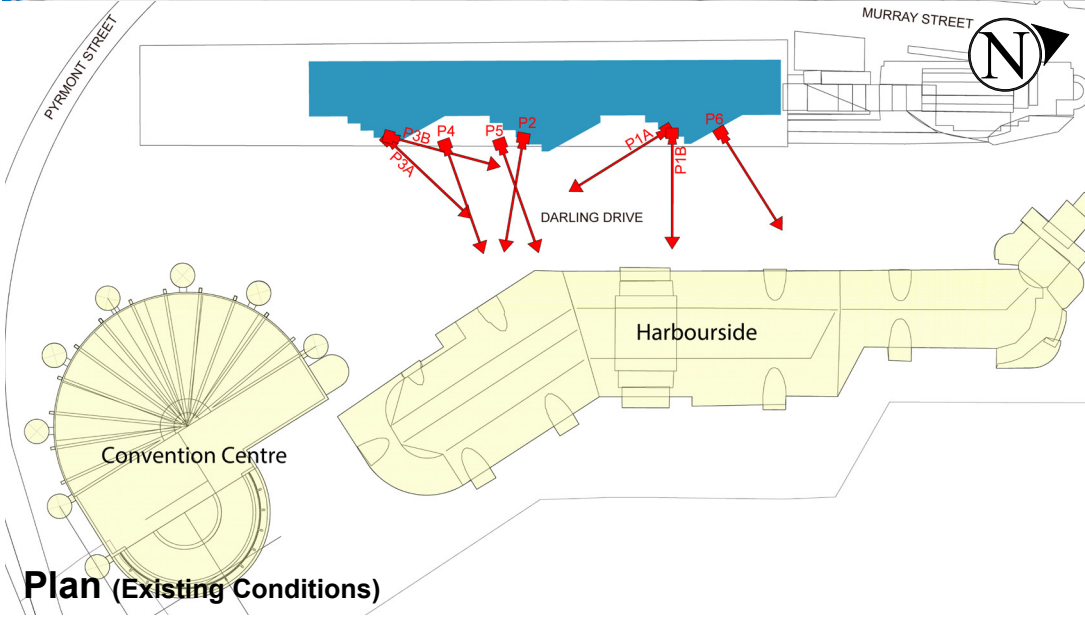
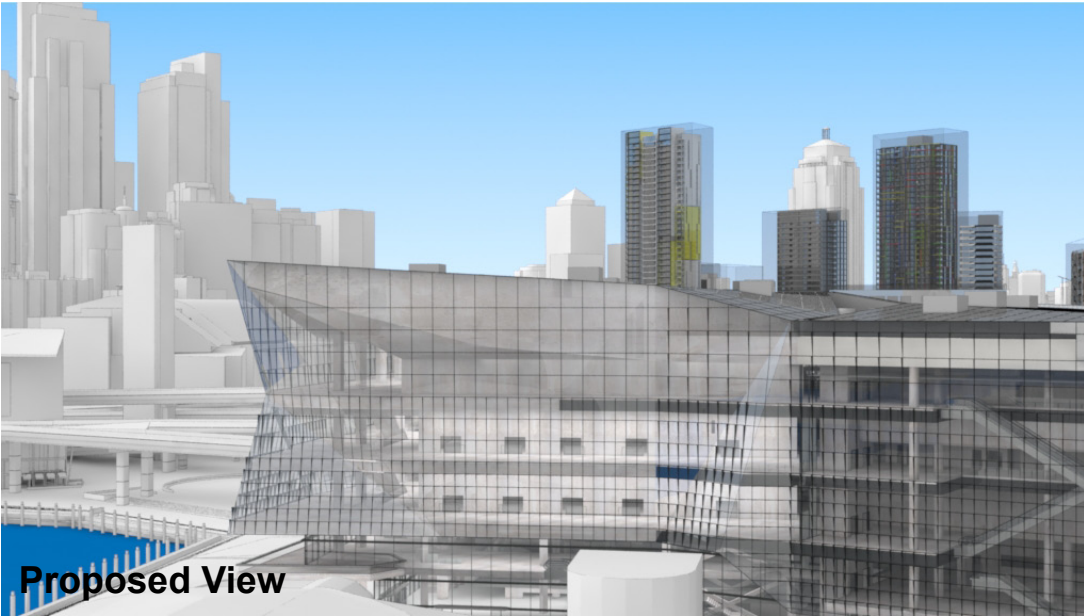
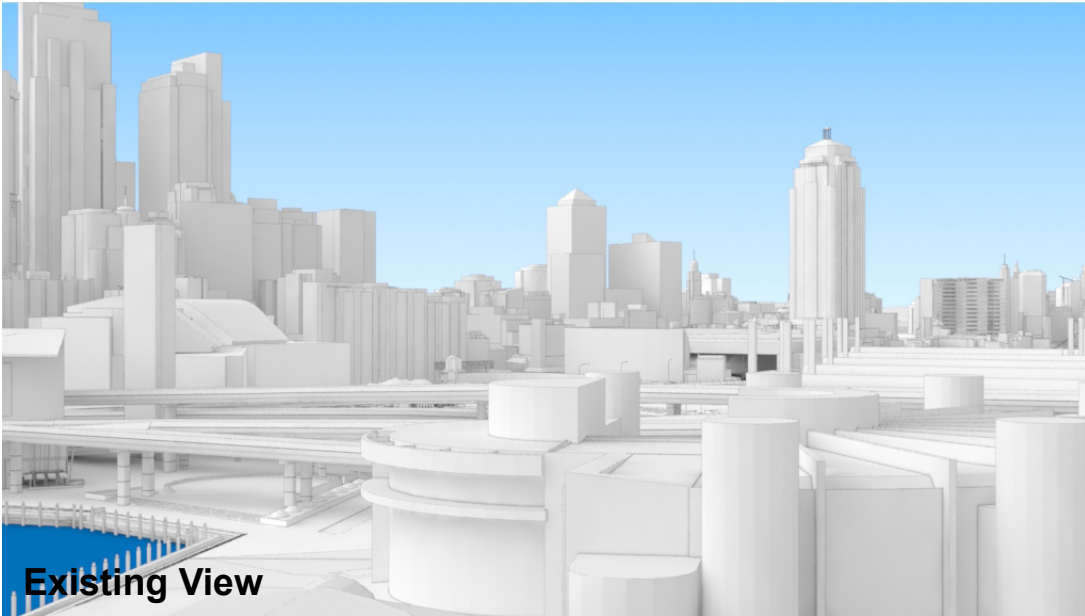
Illustrative designs of built forms in the Haymarket precinct do not form part of this development application (and will be the subject of separate development assessment processes) and is shown for information and broader illustrative purposes.

These images are produced here for view analysis purposes only.

## LEGEND:

- Key Building
- Neighbouring Buildings
- View Direction (50mm Camera)
- Camera Position

1





# Novotel Sydney Darling Harbour

Position: P1A

Level: 05

RL: 33.700 (Camera Height)

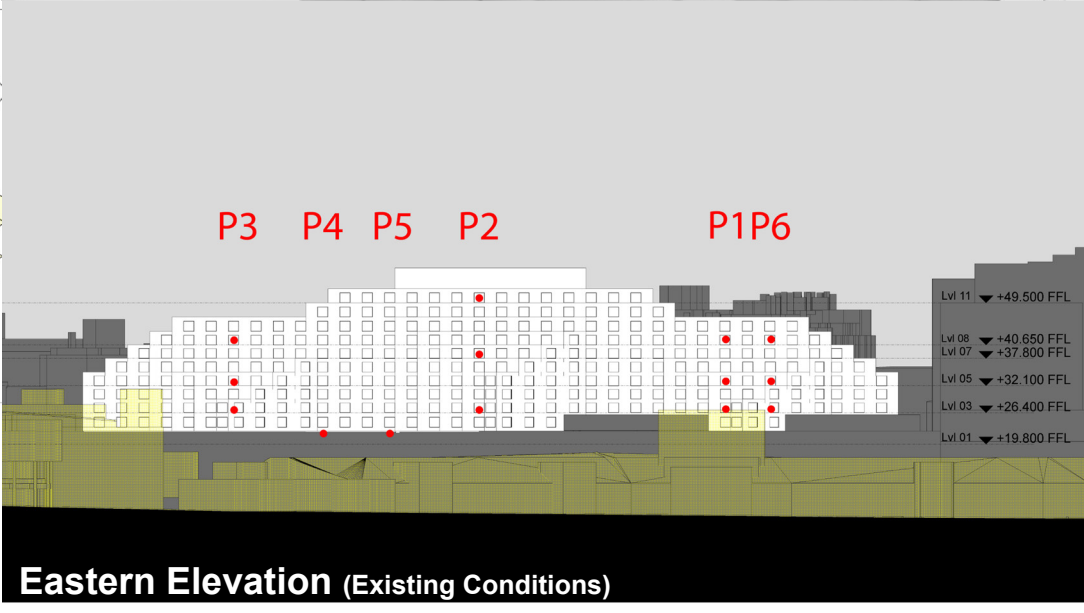
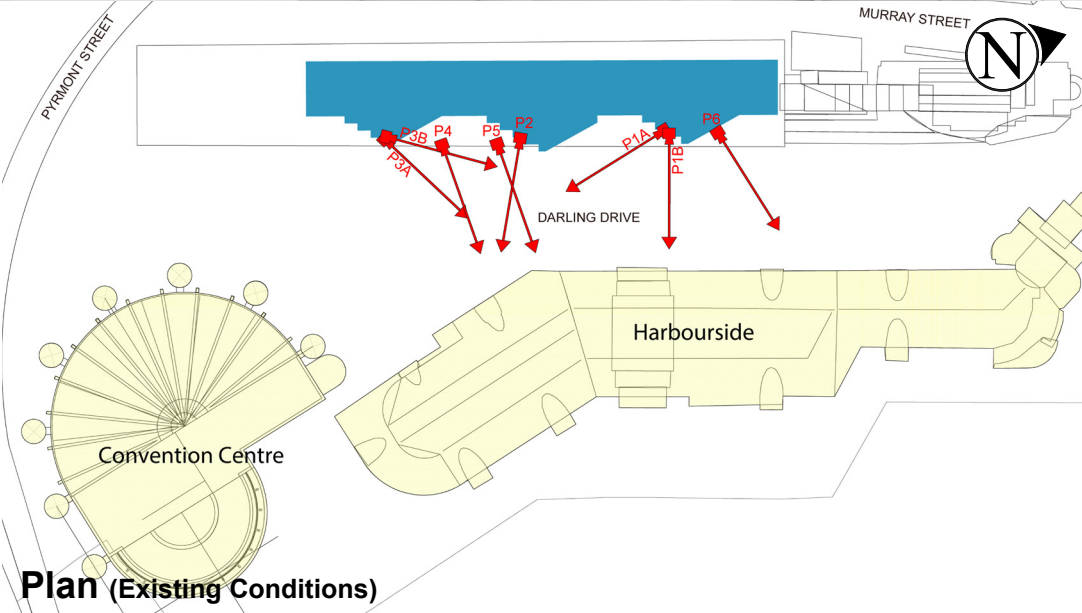
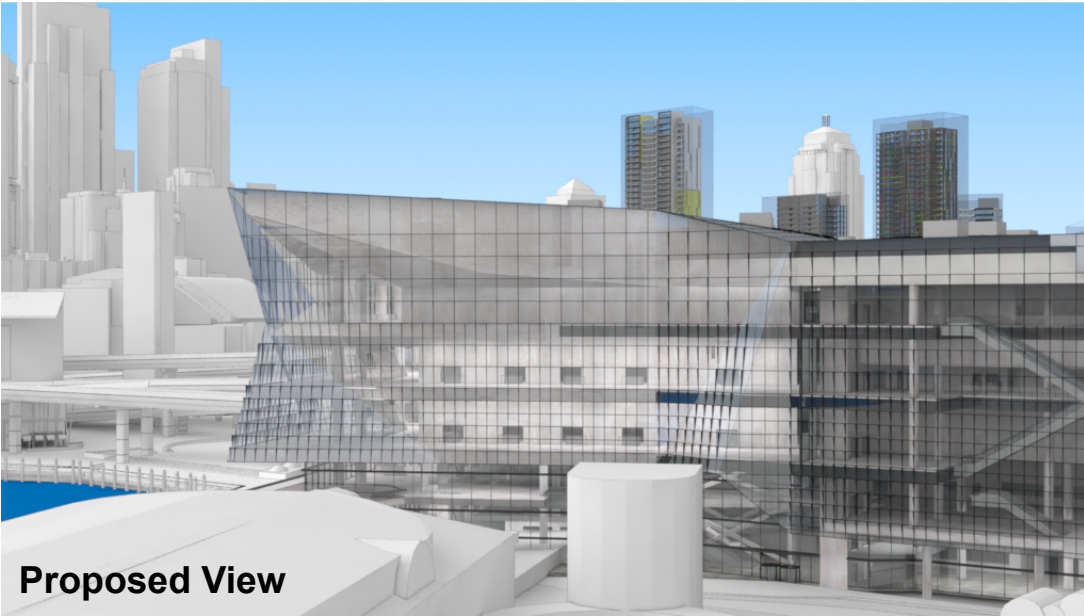
FOR INFORMATION ONLY

Illustrative designs of built forms in the Haymarket precinct do not form part of this development application (and will be the subject of separate development assessment processes) and is shown for information and broader illustrative purposes.

These images are produced here for view analysis purposes only.

## LEGEND:

- Key Building
- Neighbouring Buildings
- View Direction (50mm Camera)
- Camera Position



# Novotel Sydney Darling Harbour

Position: P1A

Level: 03

RL: 28.00 (Camera Height)

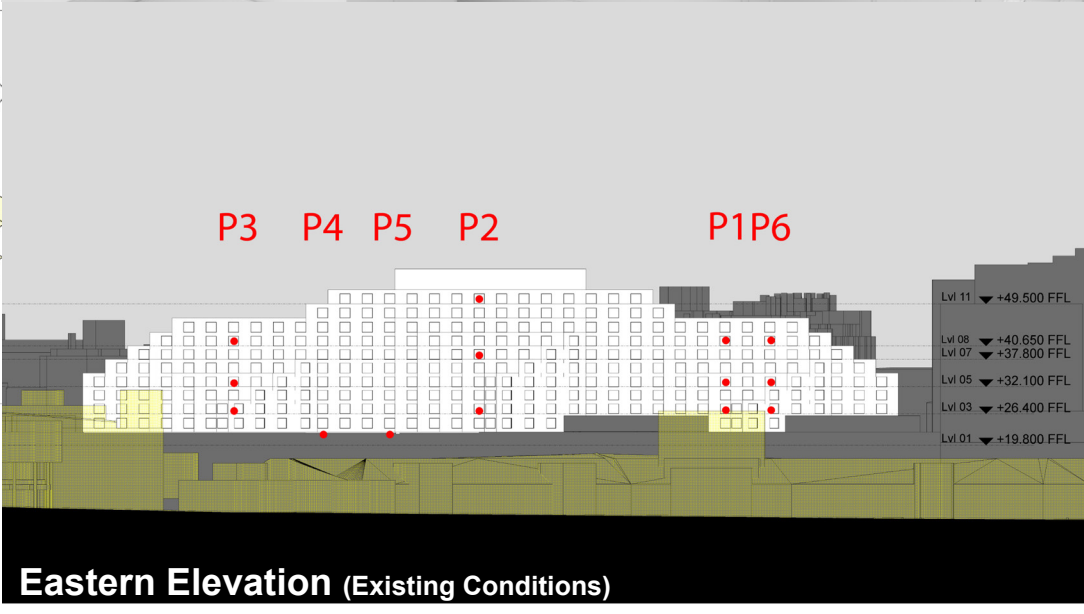
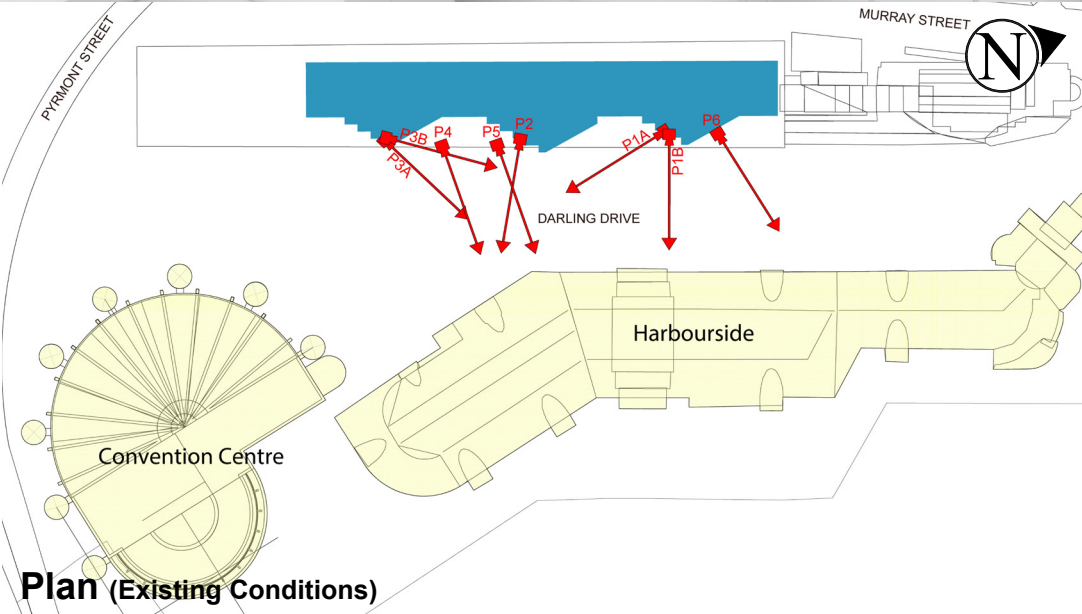
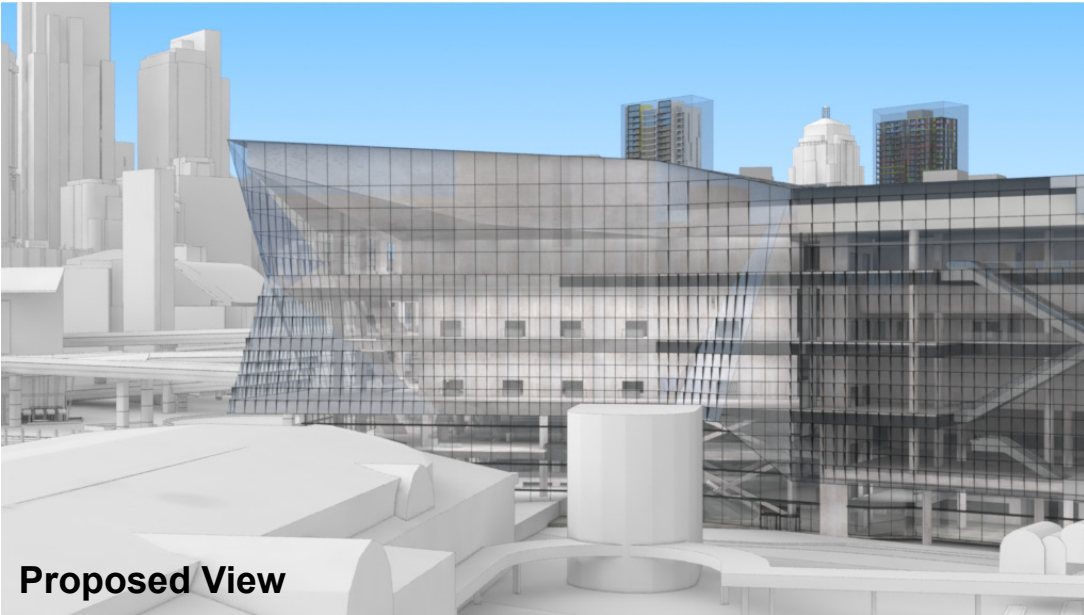
FOR INFORMATION ONLY

Illustrative designs of built forms in the Haymarket precinct do not form part of this development application (and will be the subject of separate development assessment processes) and is shown for information and broader illustrative purposes.

These images are produced here for view analysis purposes only.

## LEGEND:

- Key Building
- Neighbouring Buildings
- View Direction (50mm Camera)
- Camera Position





# Novotel Sydney Darling Harbour

Position: P1B

Level: 08

RL: 42.250 (Camera Height)

FOR INFORMATION ONLY

Illustrative designs of built forms in the Haymarket precinct do not form part of this development application (and will be the subject of separate development assessment processes) and is shown for information and broader illustrative purposes.

These images are produced here for view analysis purposes only.

LEGEND:

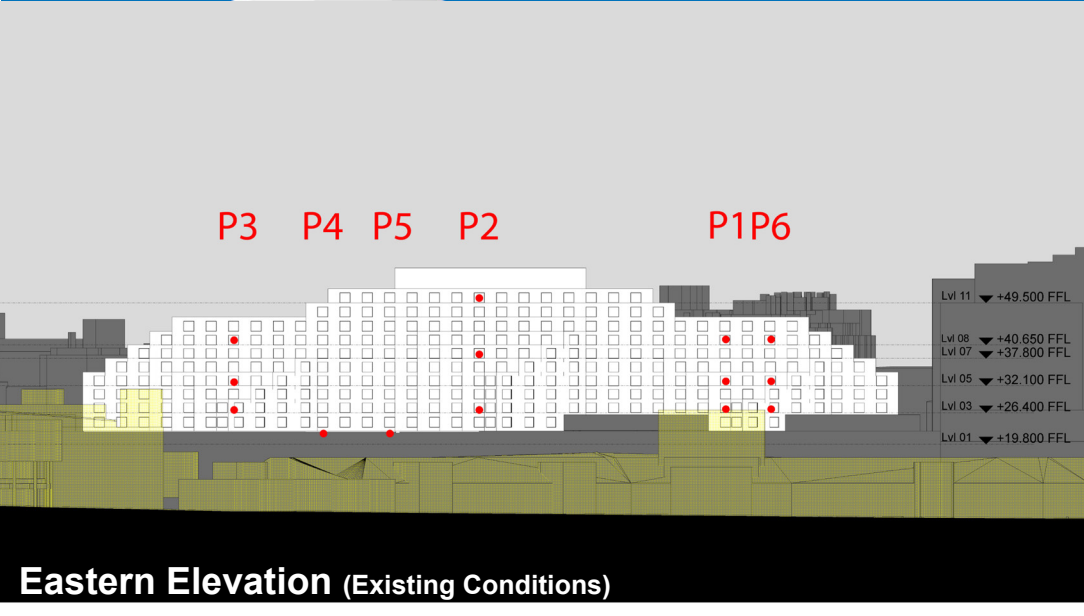
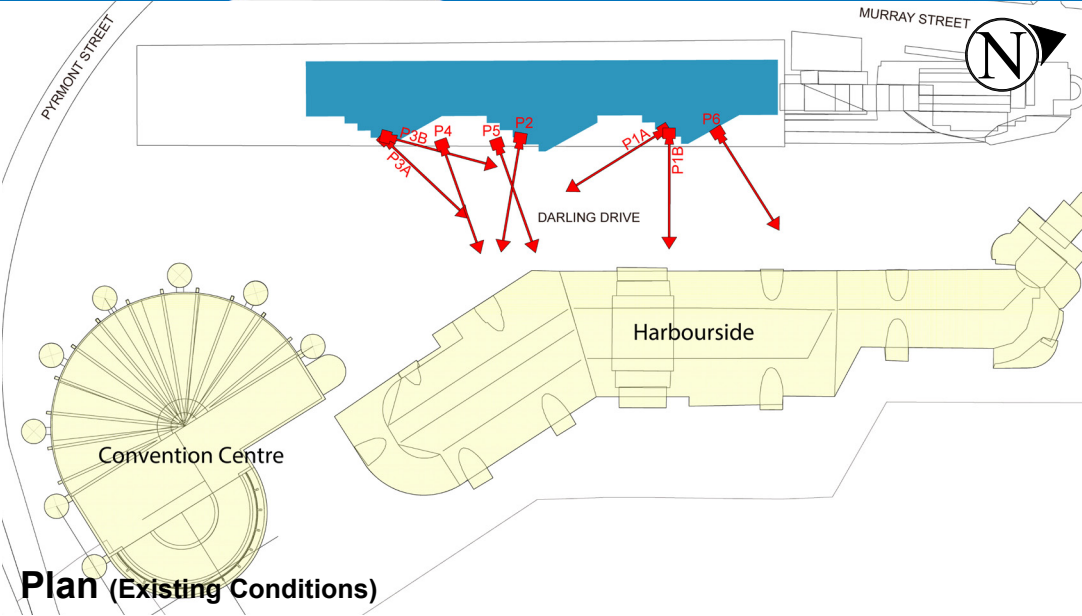
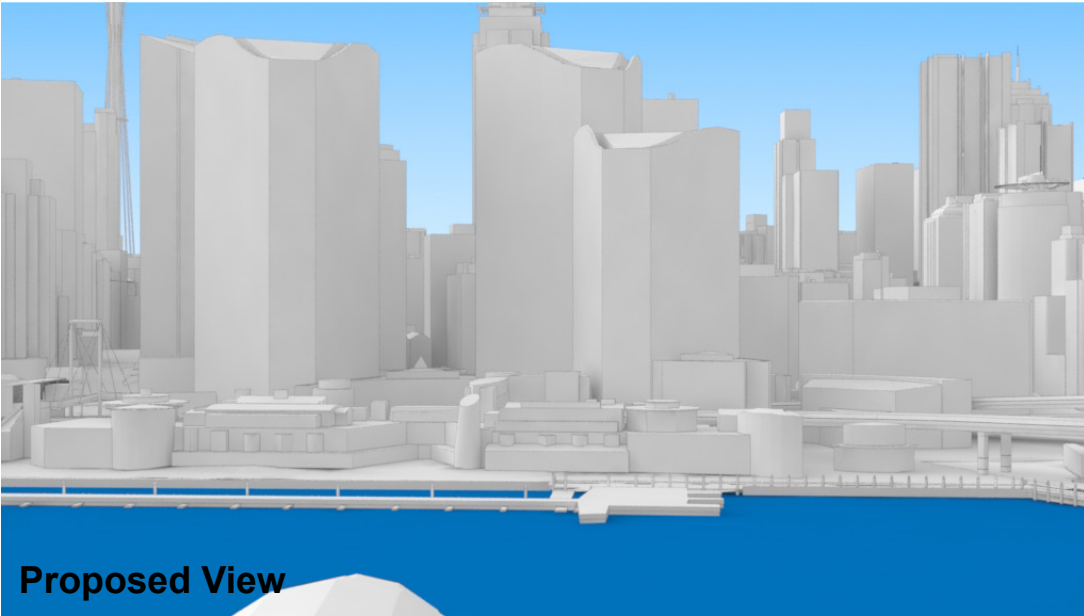
Key Building

Neighbouring Buildings

View Direction (50mm Camera)


Camera Position

4





"THE NOVOTEL"

			<p><b>COPYRIGHT © RYGATE &amp; COMPANY PTY. LIMITED 2013.</b> NO PART OF THIS PLAN MAY BE REPRODUCED, COMMUNICATED, STORED IN A RETRIEVAL SYSTEM OR TRANSMITTED IN ANY FORM WITHOUT THE WRITTEN PERMISSION OF THE COPYRIGHT OWNER EXCEPT AS PERMITTED BY THE COPYRIGHT ACT 1968. ANY PERMITTED DOWNLOADING, ELECTRONIC STORAGE, DISPLAY, PRINT, COPY, REPRODUCTION OR COMMUNICATION OF THIS SURVEY SHOULD CONTAIN NO ALTERATION OR ADDITION TO THE ORIGINAL SURVEY.</p>	<p>0 5 REDUCTION RATIO 1:100 @ A3</p> <p>DATUM : AUSTRALIAN HEIGHT DATUM CONTOUR INTERVAL : N/A ORIGIN OF LEVELS : P.M.55082 R.L.3.288 A.H.D.</p>	<p><b>Rygate &amp; Company</b> Pty Limited P.W. Rygate &amp; West ABN 61 001 204 897 w rygate.com.au</p> <p>Level 9, 89 York St Sydney NSW 2000 P +61 2 9262 6800 F +61 2 9262 6843 E surveyors@rygate.com.au</p> <p>SUBDIVISION   STRATA PLANS   STRATUM SUBDIVISION   LEASE PLANS   TOPOGRAPHIC SURVEYS   GPS SURVEYS   3D MODELLING   RACECOURSE DESIGN   PROJECT MANAGEMENT   SUN SHADOW DIAGRAMS</p>	CLIENT <b>LEND LEASE</b>		<p><b>PLAN</b> SHOWING M.G.A. &amp; A.H.D. VALUES FOR CAMERA LOCATIONS</p>						
						LOCALITY <b>DARLING HARBOUR</b>								
						L.G.A. <b>SYDNEY</b>								
B	12/3/2013	SHEET LAYOUT AMENDED TO SINGLE PHOTO PER PAGE									REFERENCE No.	PLAN No.	DATE	SHEET No. 12
A	18/2/2013	HARRIS STRTEET PROPERTY AND NOVOTEL LOCATIONS ADDED						75706		18/2/2013	OF 13 SHEETS			
REV.	DATE	AMENDMENTS	SURVEYOR	DRAWN	CHECKED	APPROVED								
			-	-										





*SICEEP-Novotel Deck 1 E EXISTING*



*SICEEP-Novotel Deck 1 E*





SICEEP-Novotel Deck 1 SE EXISTING



SICEEP-Novotel Deck 1 SE