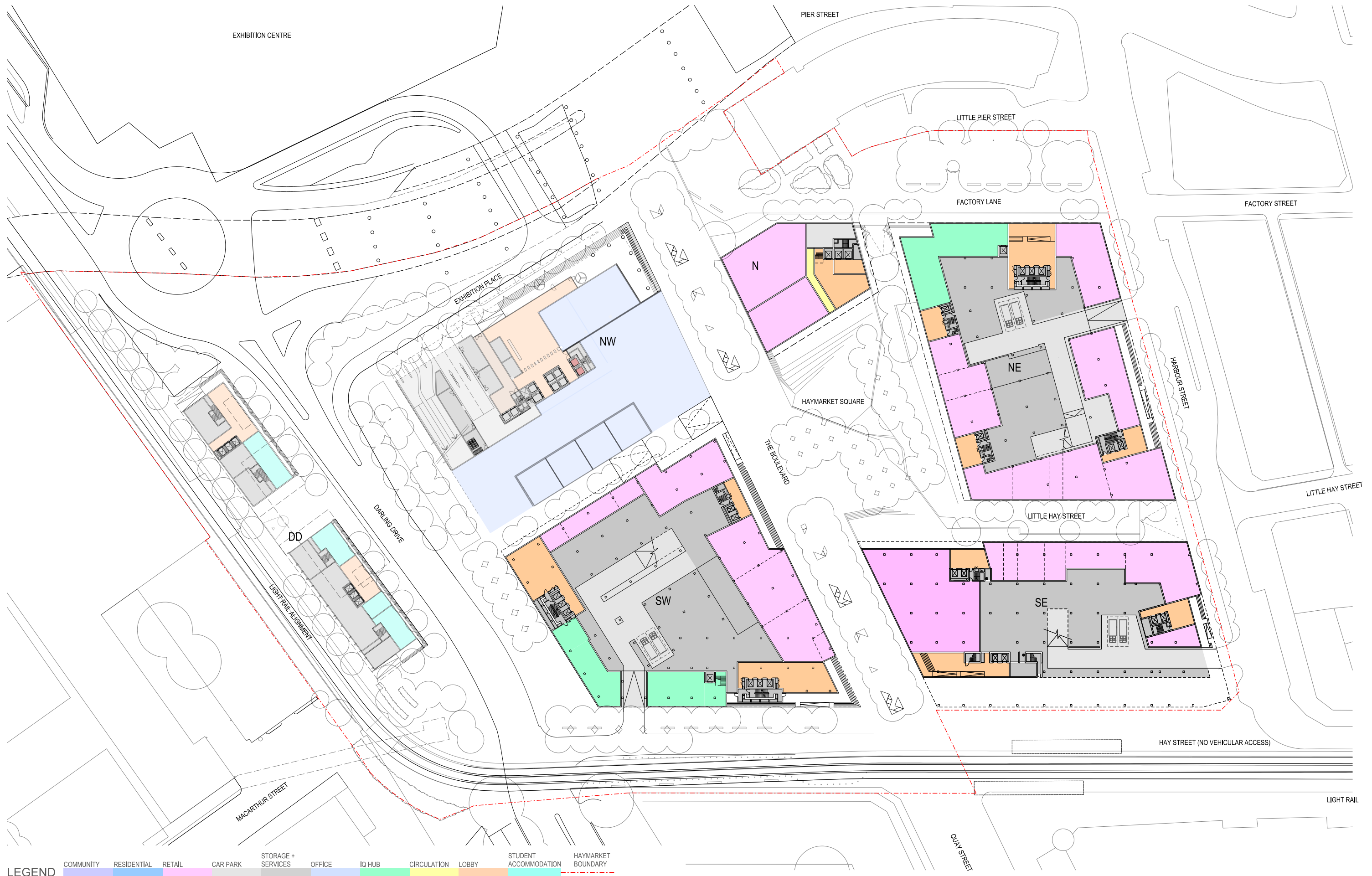


KEY

--- The Haymarket

Existing buildings to be demolished

Existing monorail + stations (demolition to commence June 2013 - by others)



LEGEND

COMMUNITY RESIDENTIAL RETAIL CAR PARK STORAGE + SERVICES OFFICE IQ HUB CIRCULATION LOBBY STUDENT ACCOMMODATION HAYMARKET BOUNDARY



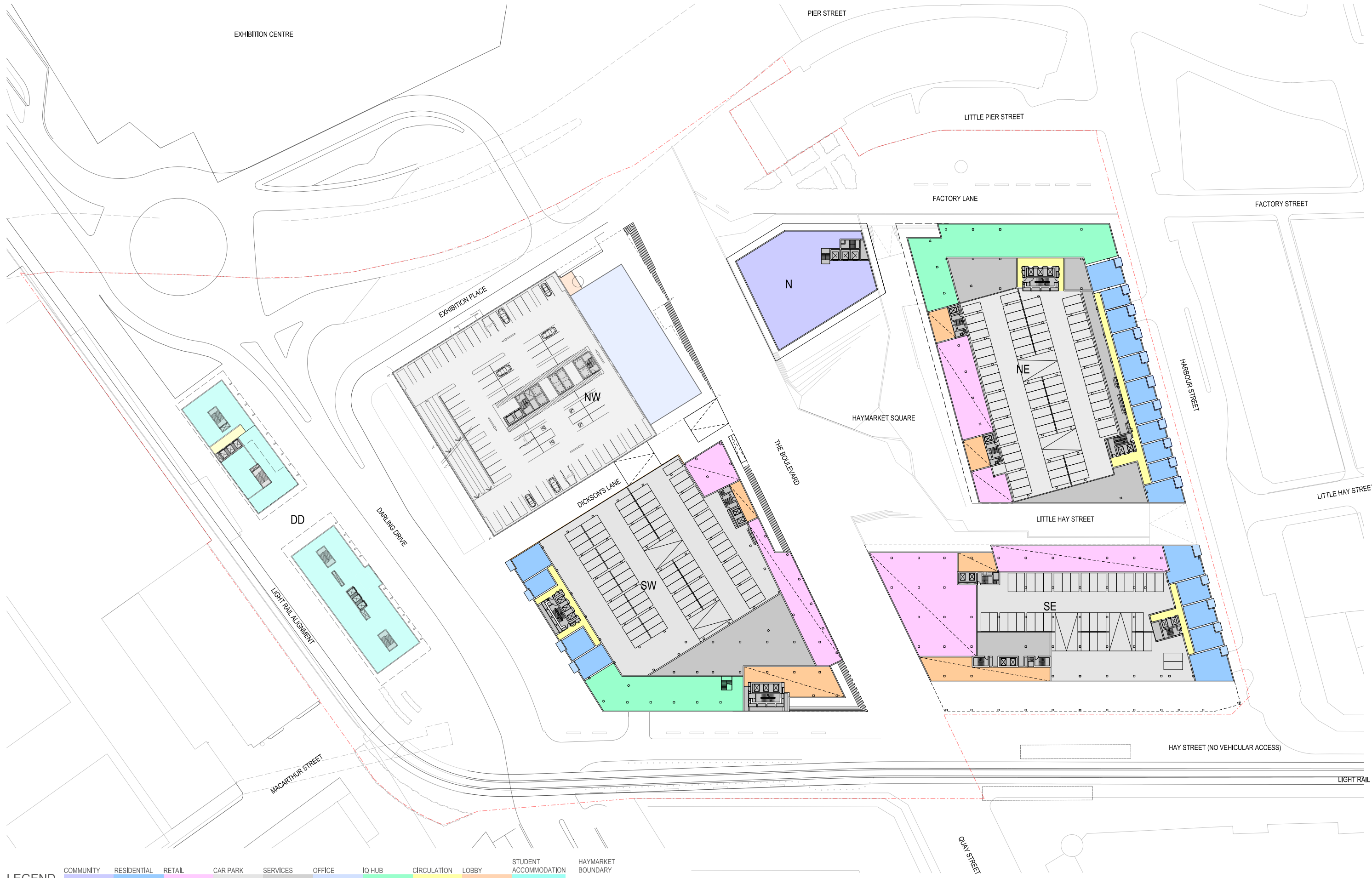
7428A MCD AR D101
FOR INFORMATION ONLY
1:500 @ A1
0 5 25m

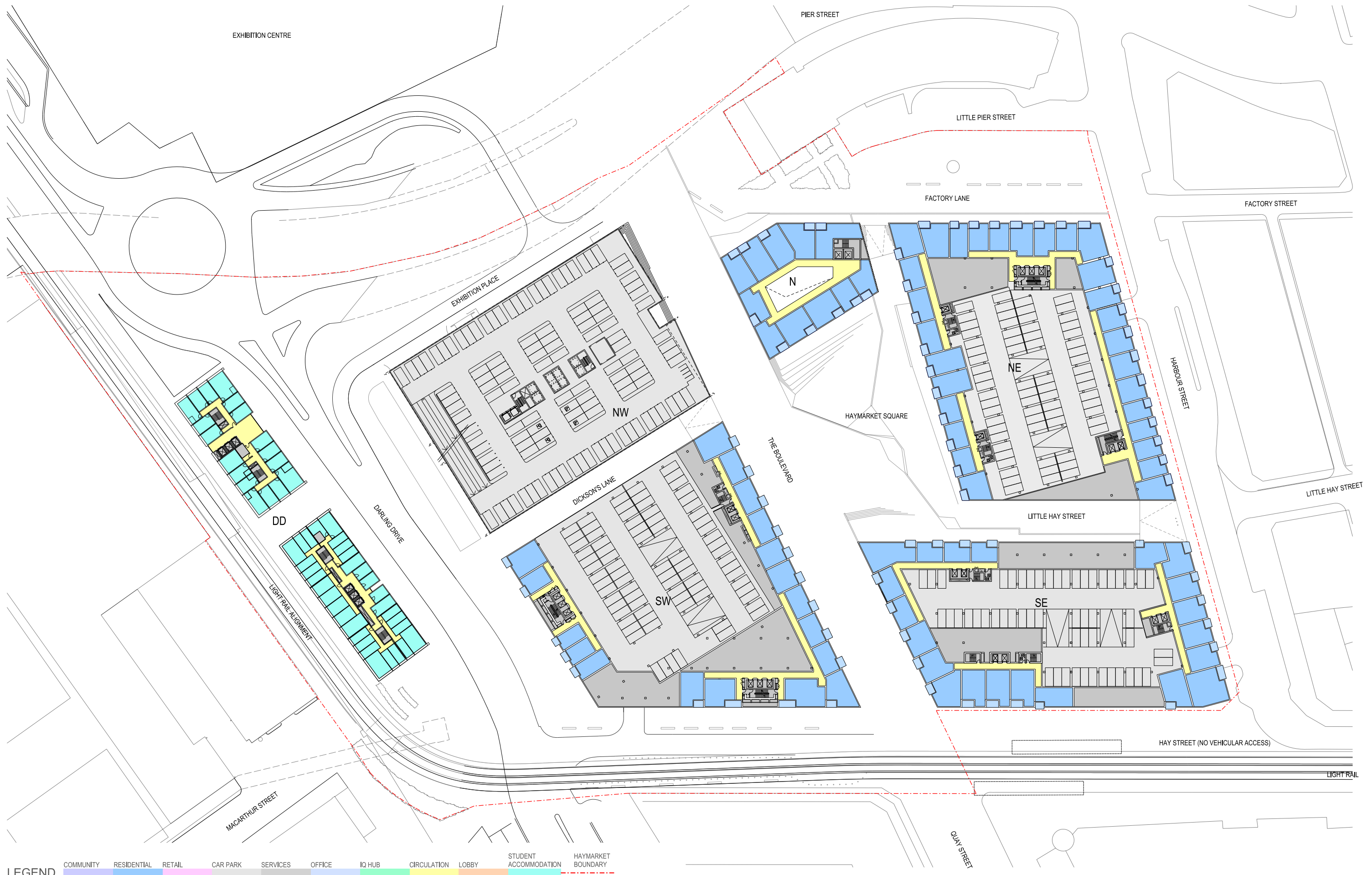
REV C
15/03/2013

DENTON
CORKER
MARSHALL

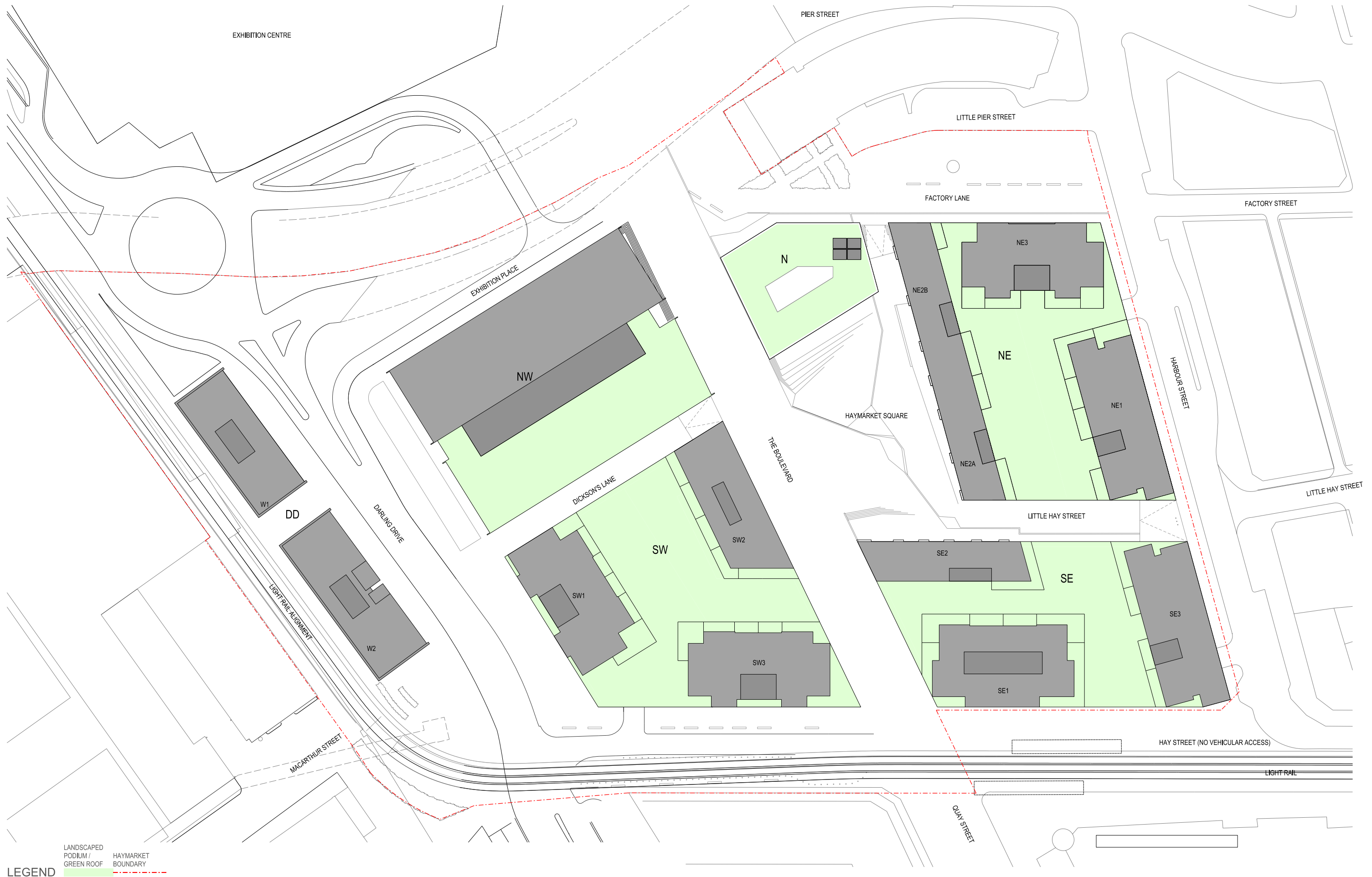
THE HAYMARKET
LEND LEASE DEVELOPMENT

DEVELOPMENT APPLICATION
ILLUSTRATIVE SCHEME
GROUND FLOOR PLAN









LEGEND

LANDSCAPED
PODIUM /
GREEN ROOF

HAYMARKET
BOUNDARY



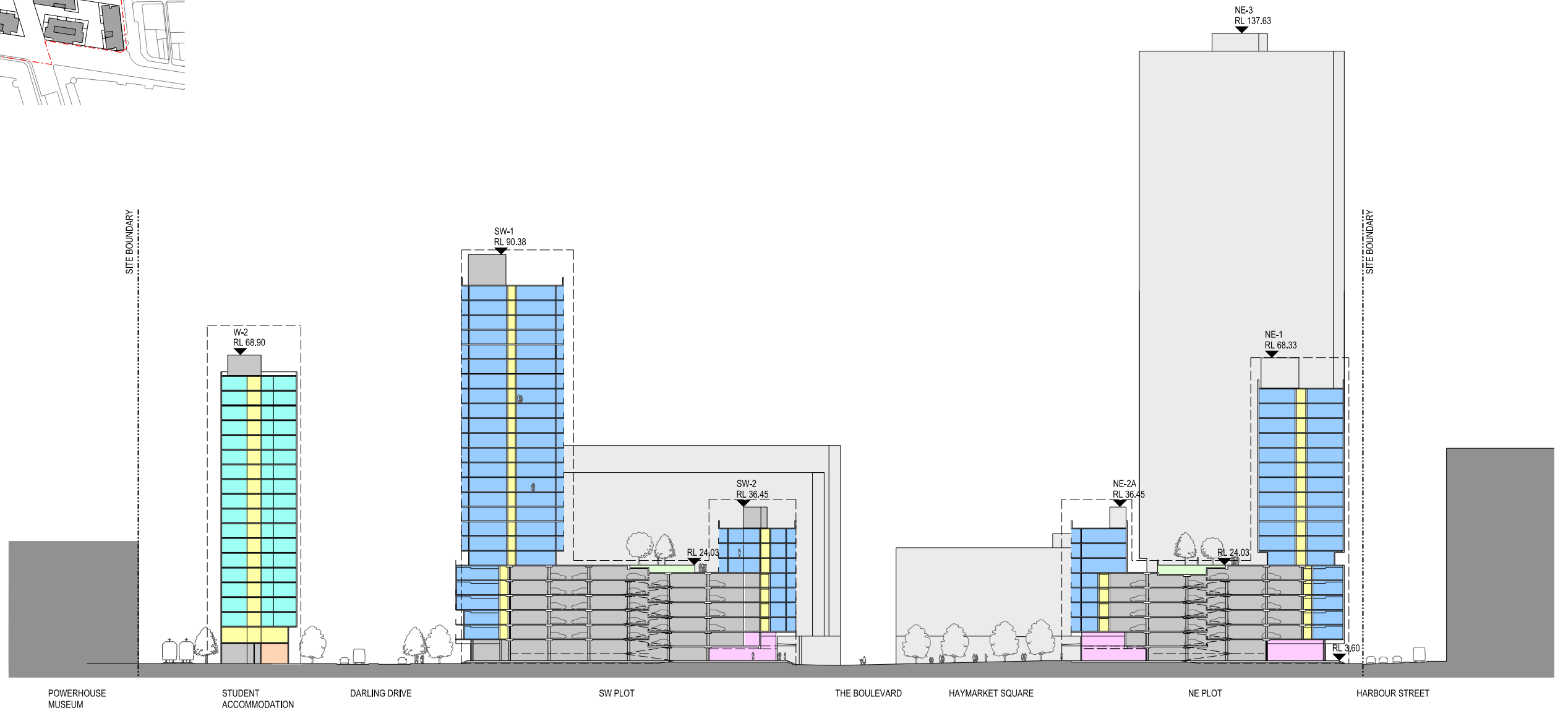
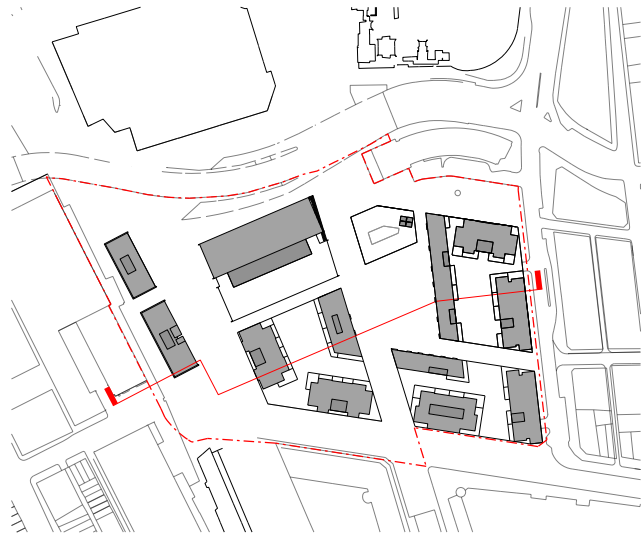
7428A MCD AR D105
FOR INFORMATION ONLY
1:500 @ A1
0 5 25m

REV C
15/03/2013

DENTON
CORKER
MARSHALL

THE HAYMARKET
LEND LEASE DEVELOPMENT

DEVELOPMENT APPLICATION
ILLUSTRATIVE SCHEME
ROOF LEVEL PLAN



LEGEND



MAXIMUM
PARAMETER
FOOTPRINTS
FOR BUILDINGS



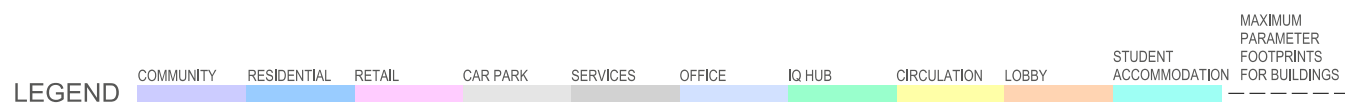
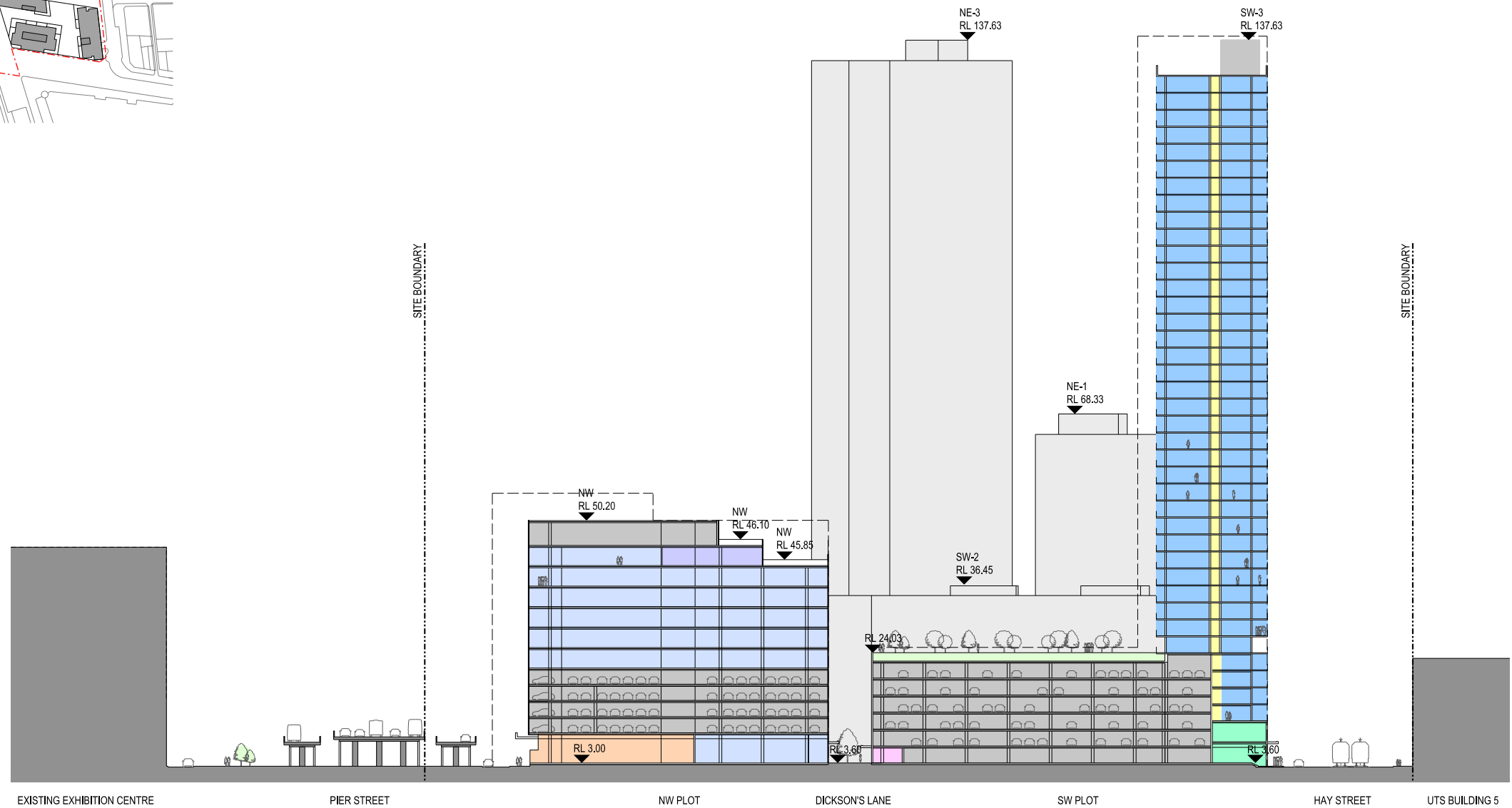
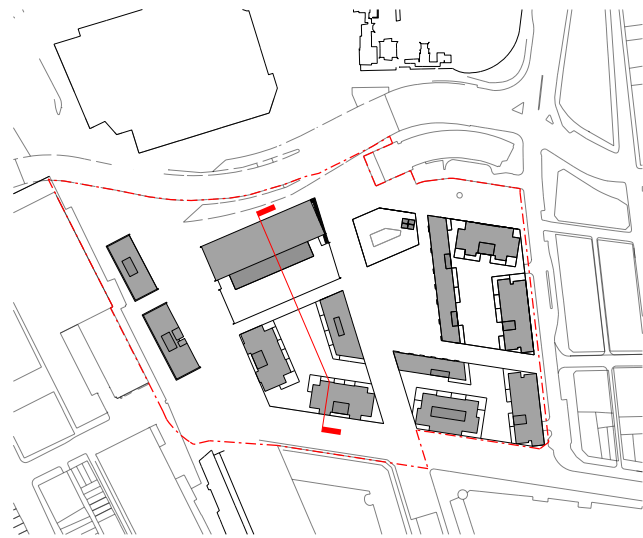
7428A MCD AR SS110
FOR INFORMATION ONLY
1:500 @ A1
0 5 25m

REV C
19/03/2013

DENTON
CORKER
MARSHALL

THE HAYMARKET
LEND LEASE DEVELOPMENT

DEVELOPMENT APPLICATION
ILLUSTRATIVE SCHEME
SECTION A-A

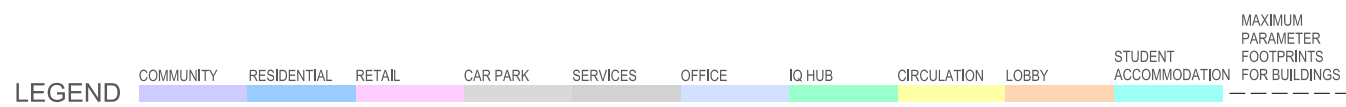
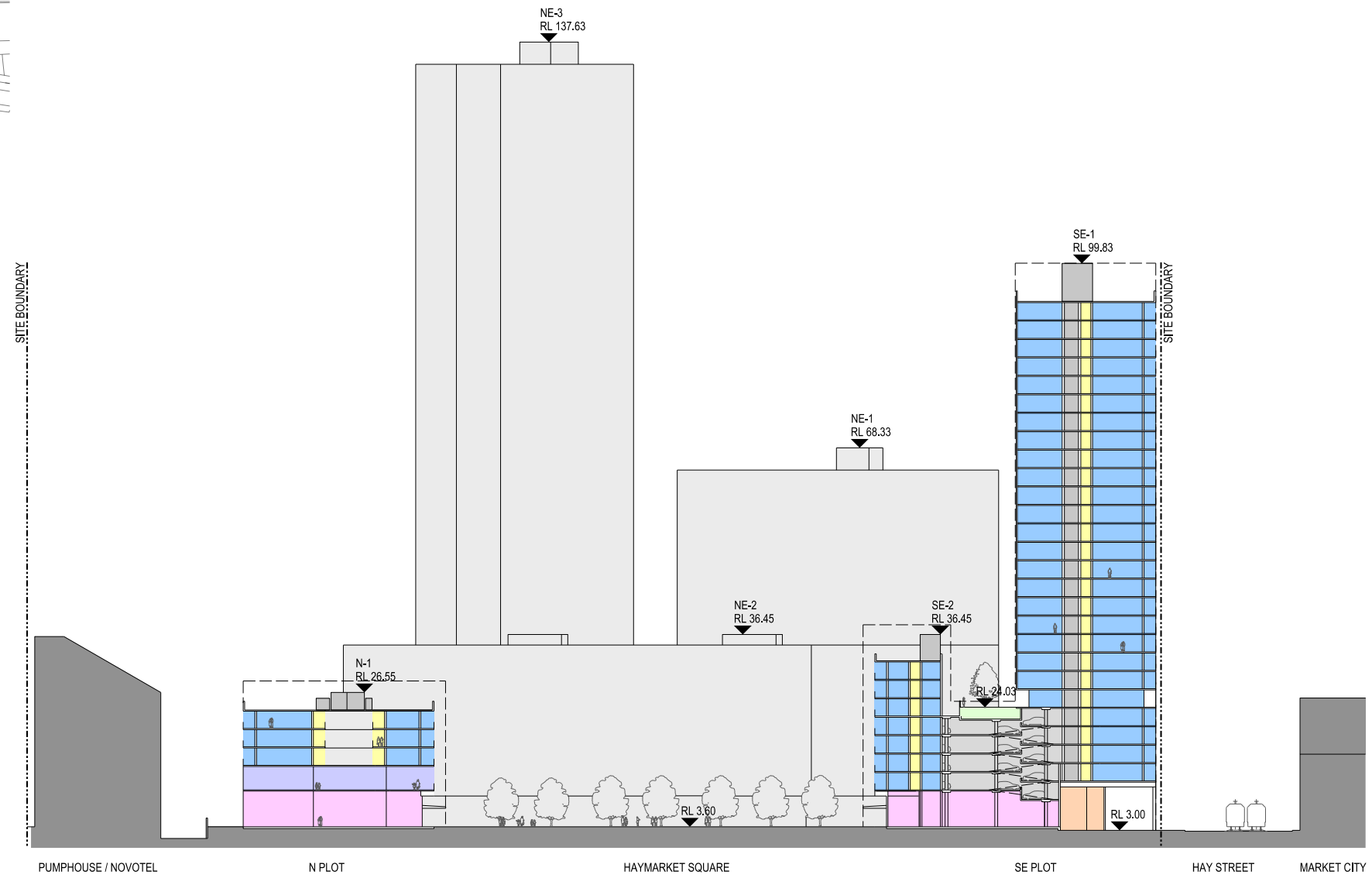
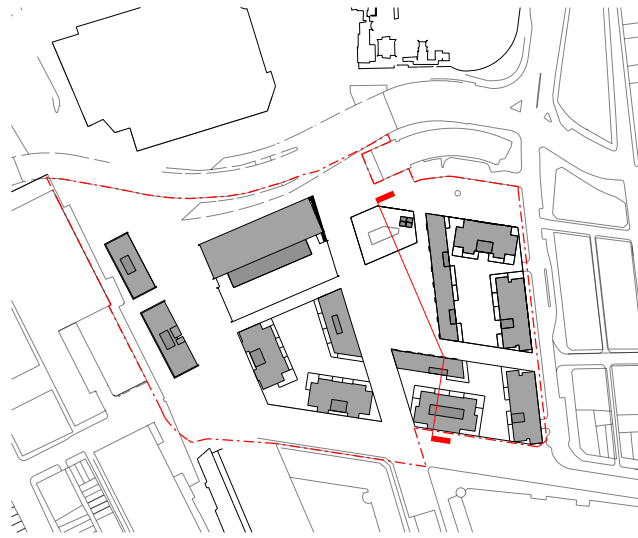


7428A MCD AR SS111
FOR INFORMATION ONLY
1:500 @ A1
0 5 25m

DENTON
CORKER
MARSHALL

THE HAYMARKET
LEND LEASE DEVELOPMENT

DEVELOPMENT APPLICATION
ILLUSTRATIVE SCHEME
SECTION B-B



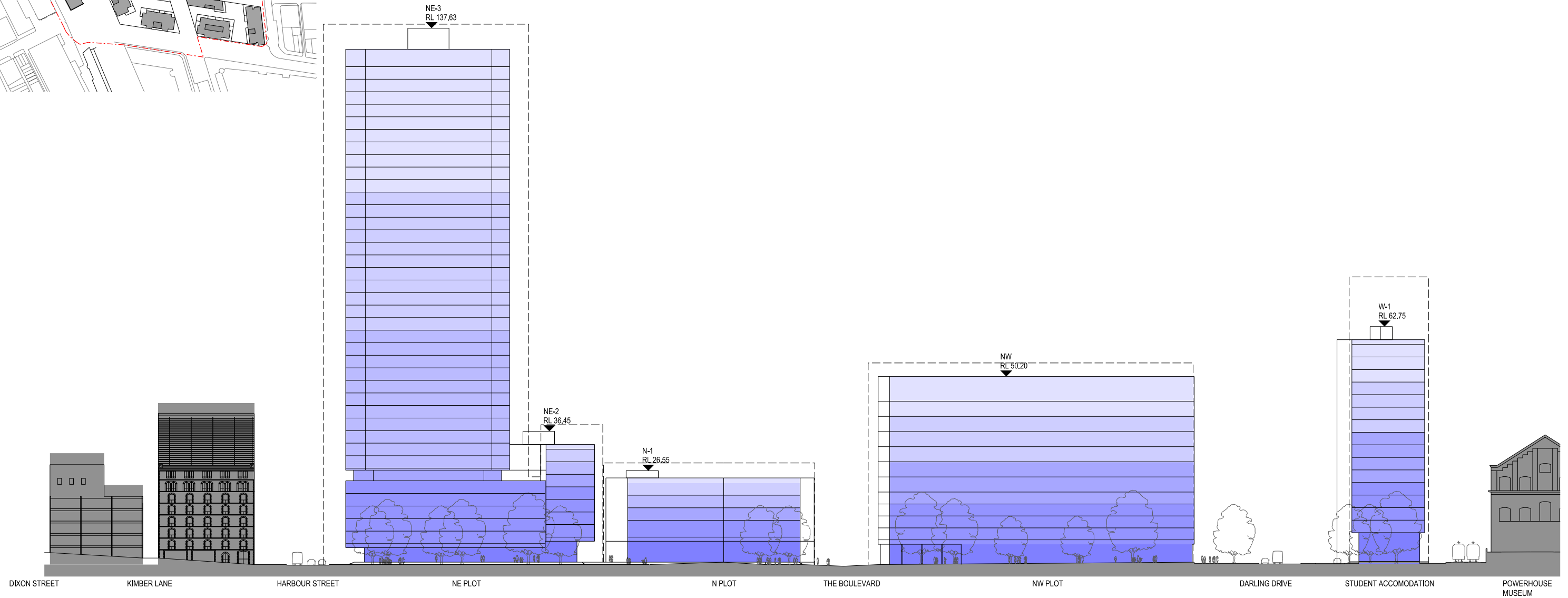
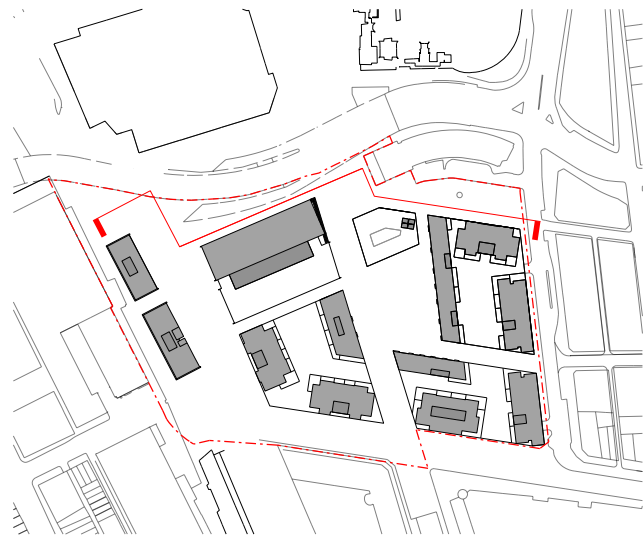
7428A MCD AR SS112
FOR INFORMATION ONLY
1:500 @ A1
0 5 25m

REV C
15/03/2013

DENTON
CORKER
MARSHALL

THE HAYMARKET
LEND LEASE DEVELOPMENT

DEVELOPMENT APPLICATION
ILLUSTRATIVE SCHEME
SECTION C-C



LEGEND

MAXIMUM
PARAMETER
FOOTPRINTS
FOR BUILDINGS



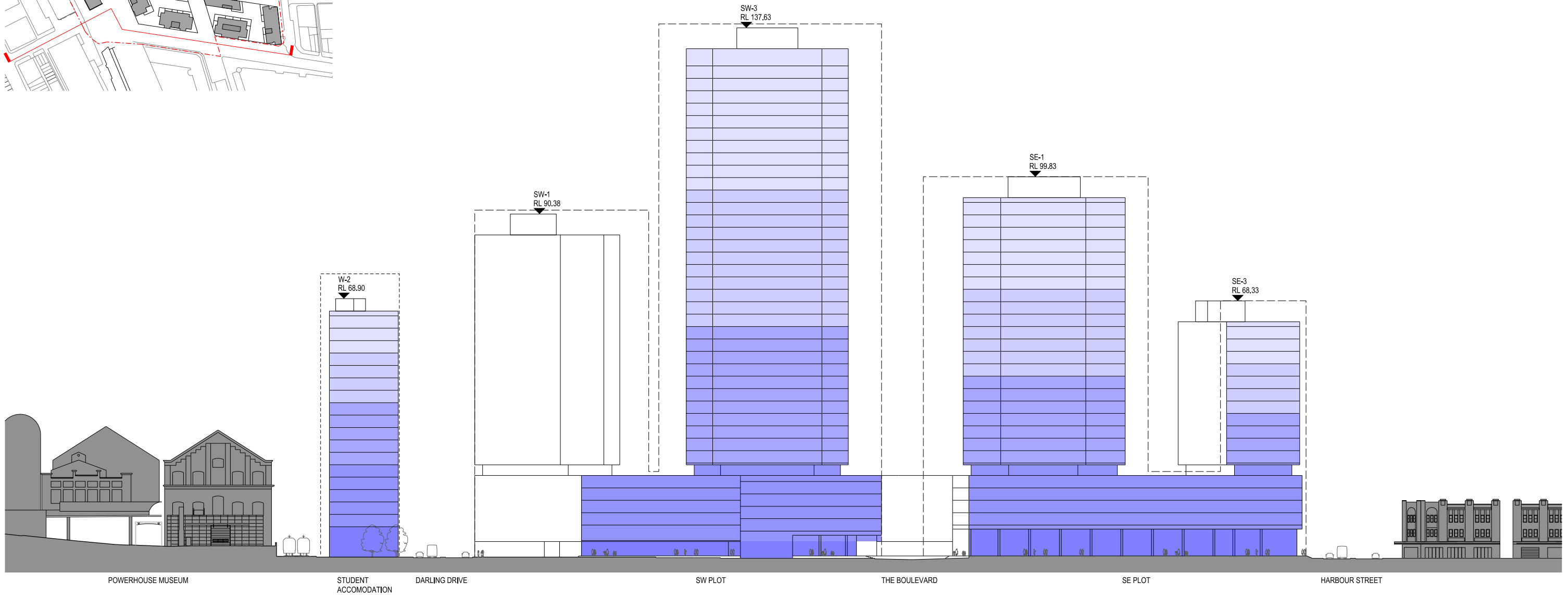
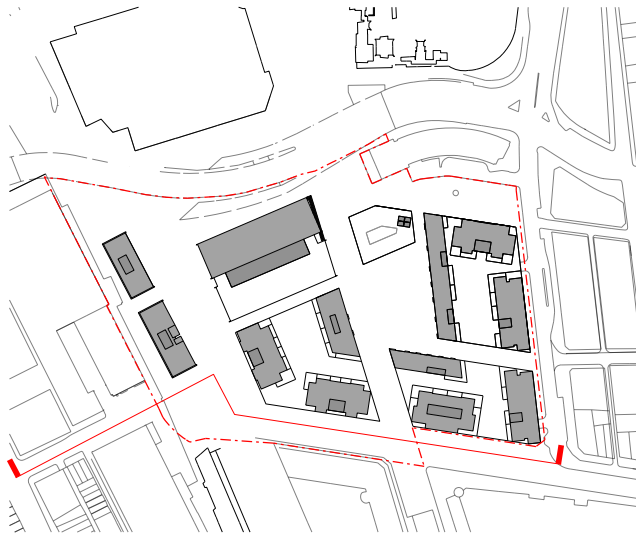
7428A MCD AR D120
FOR INFORMATION ONLY
1:500 @ A1
0 5 25m

REV C
15/03/2013

DENTON
CORKER
MARSHALL

THE HAYMARKET
LEND LEASE DEVELOPMENT

DEVELOPMENT APPLICATION
ILLUSTRATIVE SCHEME
NORTH ELEVATION



LEGEND
 MAXIMUM
 PARAMETER
 FOOTPRINTS
 FOR BUILDINGS



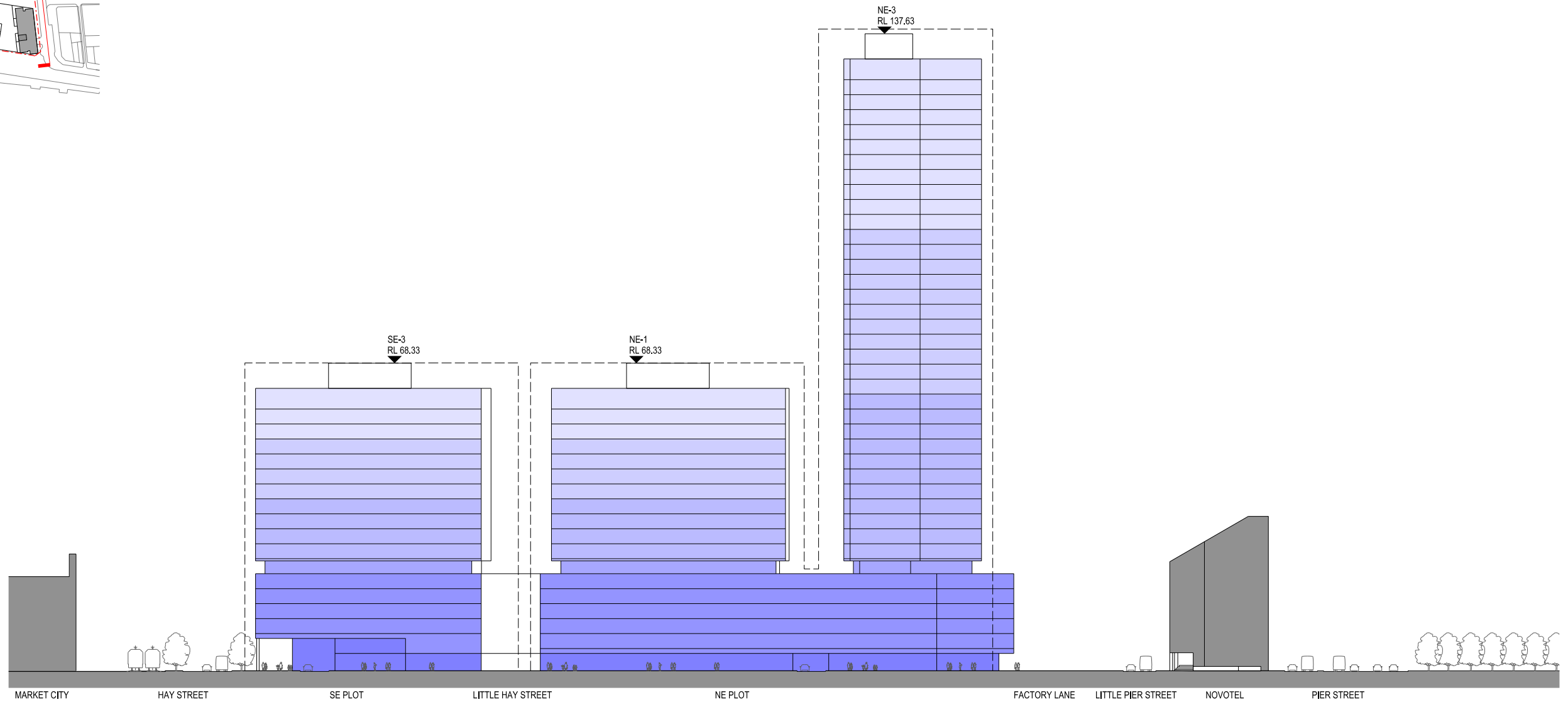
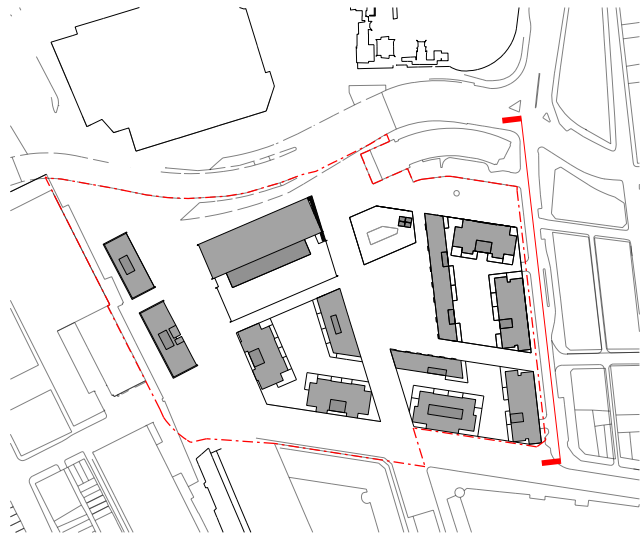
7428A MCD AR D121
 FOR INFORMATION ONLY
 1:500 @ A1
 0 5 25m

REV C
 19/03/2013

DENTON
 CORKER
 MARSHALL

THE HAYMARKET
 LEND LEASE DEVELOPMENT

DEVELOPMENT APPLICATION
 ILLUSTRATIVE SCHEME
 SOUTH ELEVATION



LEGEND
 MAXIMUM
 PARAMETER
 FOOTPRINTS
 FOR BUILDINGS



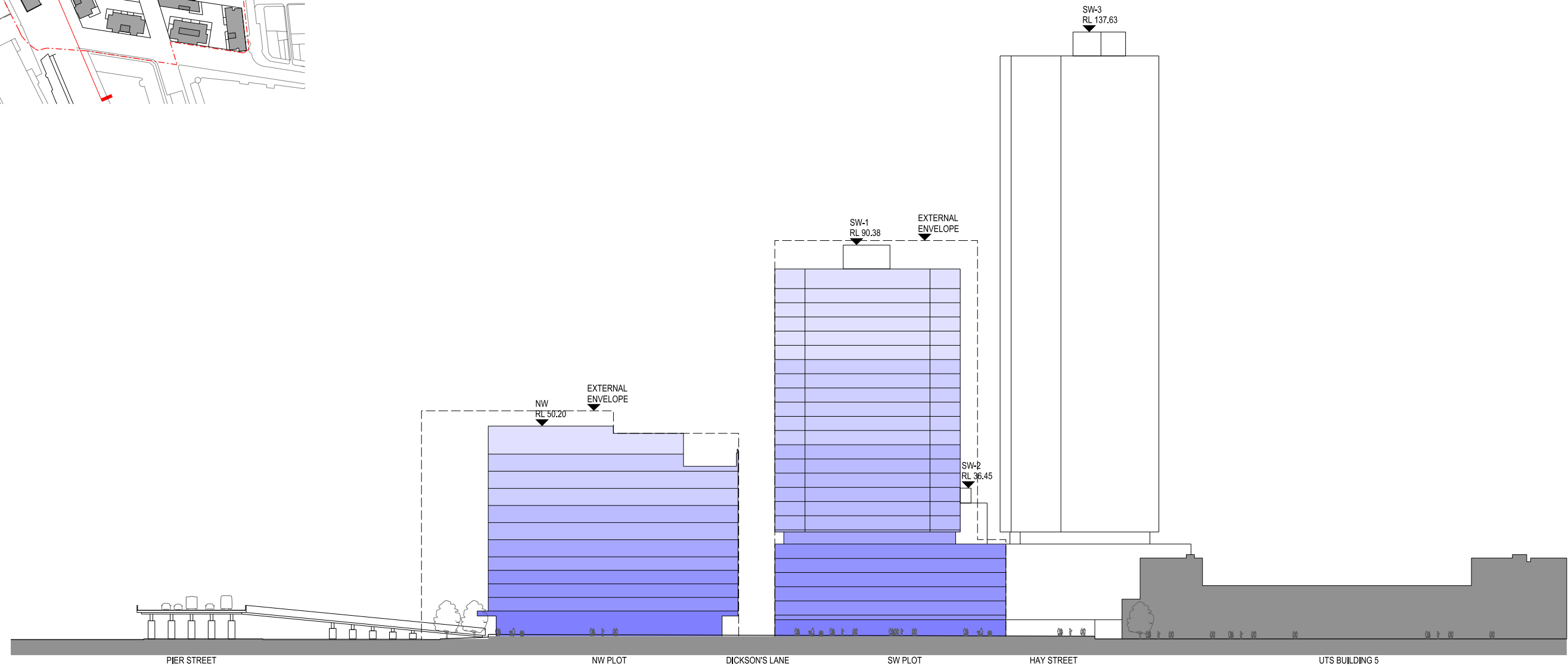
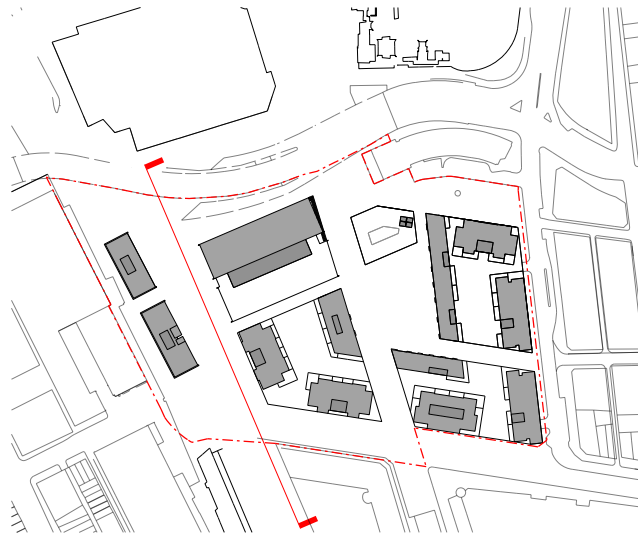
7428A MCD AR D122
 FOR INFORMATION ONLY
 1:500 @ A1
 0 5 25m

REV C
 15/03/2013

DENTON
 CORKER
 MARSHALL

THE HAYMARKET
 LEND LEASE DEVELOPMENT

DEVELOPMENT APPLICATION
 ILLUSTRATIVE SCHEME
 EAST ELEVATION



LEGEND
 MAXIMUM
 PARAMETER
 FOOTPRINTS
 FOR BUILDINGS



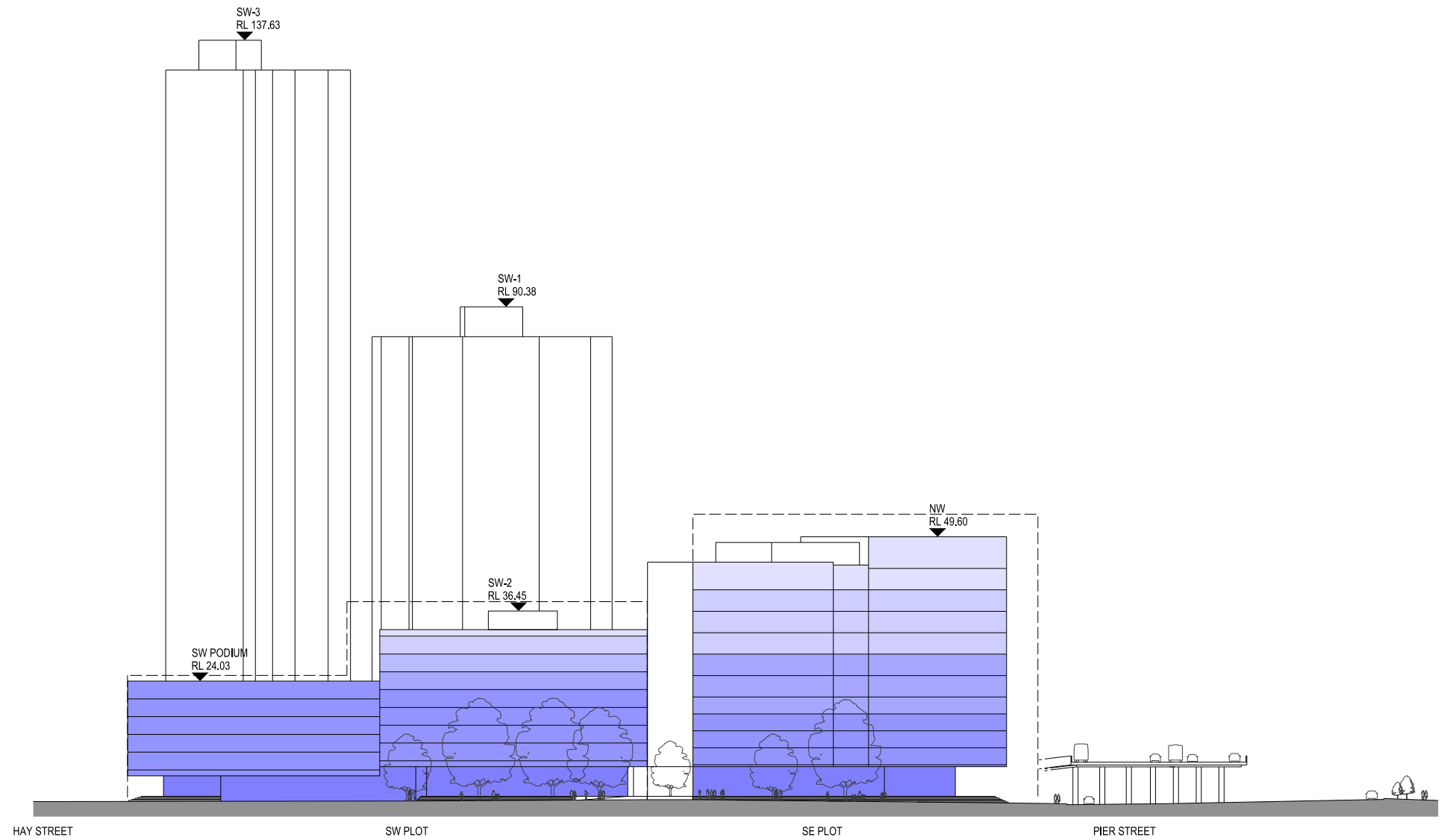
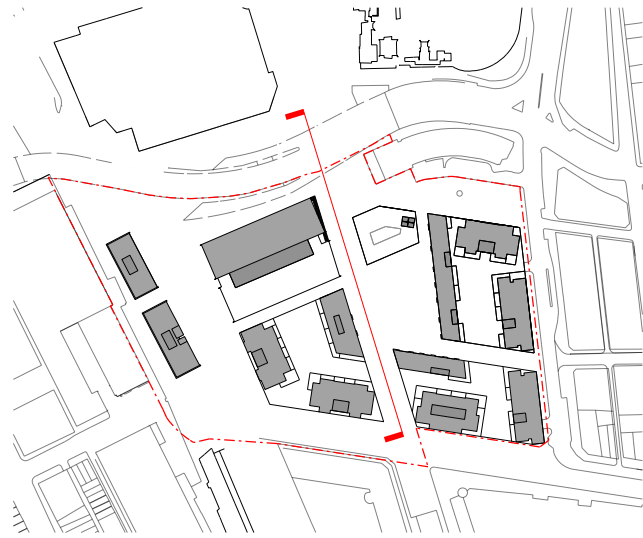
7428A MCD AR D123
 FOR INFORMATION ONLY
 1:1000 @ A3
 0 5 25m

REV C
 15/03/2013

DENTON
 CORKER
 MARSHALL

THE HAYMARKET
 LEND LEASE DEVELOPMENT

DEVELOPMENT APPLICATION
 ILLUSTRATIVE SCHEME
 WEST ELEVATION



LEGEND

MAXIMUM
PARAMETER
ENVELOPES
FOR BUILDINGS



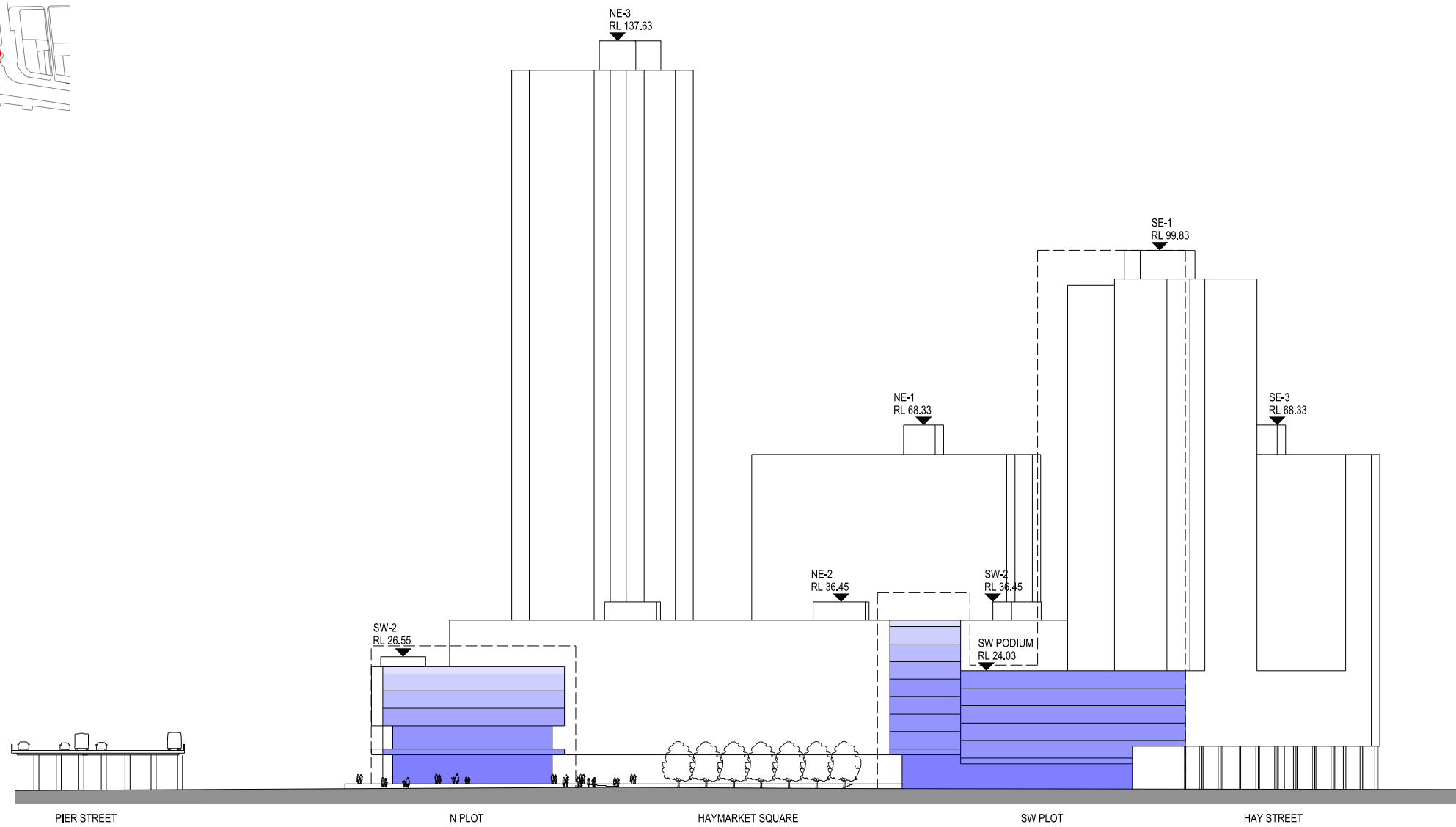
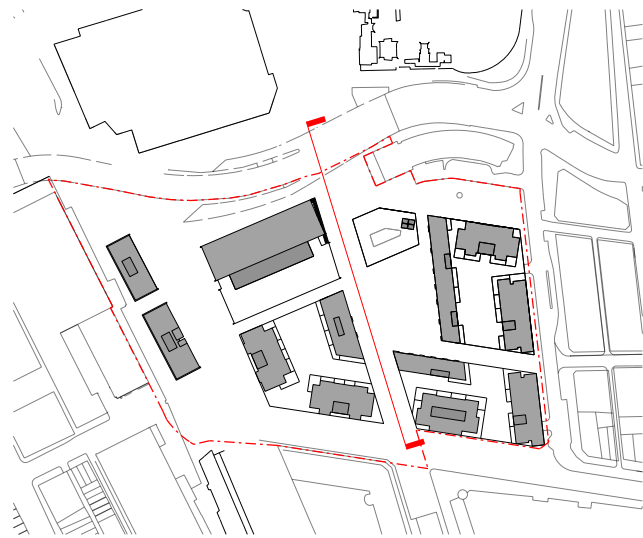
7428A MCD AR D170
FOR INFORMATION ONLY
1:500 @ A1
0 5 25m

REV A
15/03/2013

DENTON
CORKER
MARSHALL

THE HAYMARKET
LEND LEASE DEVELOPMENT

DEVELOPMENT APPLICATION
ILLUSTRATIVE SCHEME
EAST ELEVATION FROM BOULEVARD



LEGEND

 MAXIMUM
 PARAMETER
 ENVELOPES
 FOR BUILDINGS



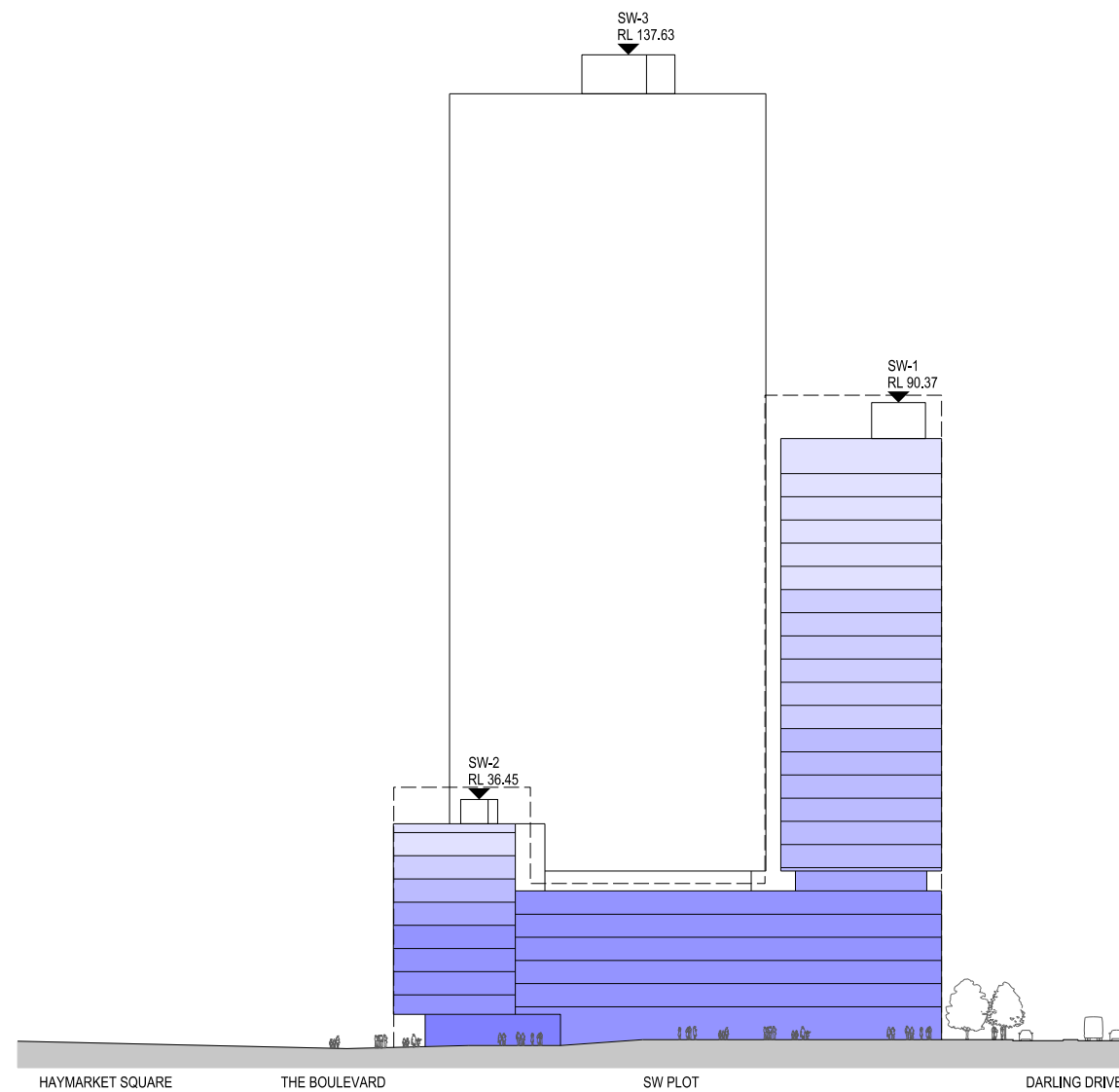
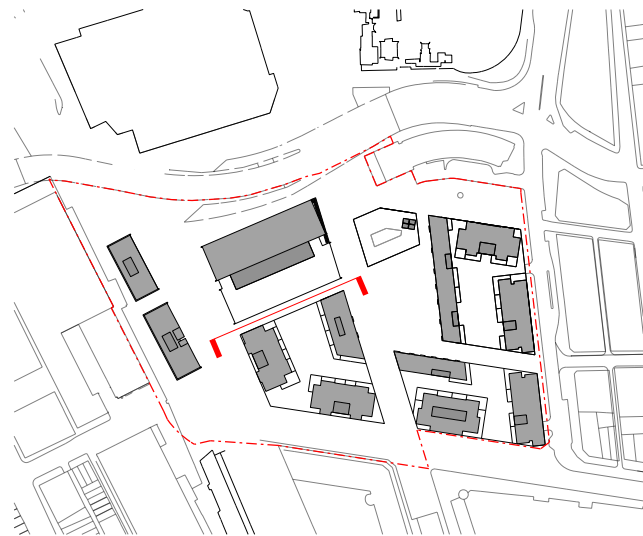
7428A MCD AR D171
 FOR INFORMATION ONLY
 1:500 @ A1
 0 5 25m

REV A
 15/03/2013

DENTON
 CORKER
 MARSHALL

THE HAYMARKET
 LEND LEASE DEVELOPMENT

DEVELOPMENT APPLICATION
 ILLUSTRATIVE SCHEME
 WEST ELEVATION
 FROM BOULEVARD



LEGEND

MAXIMUM
PARAMETER
FOOTPRINTS
FOR BUILDINGS



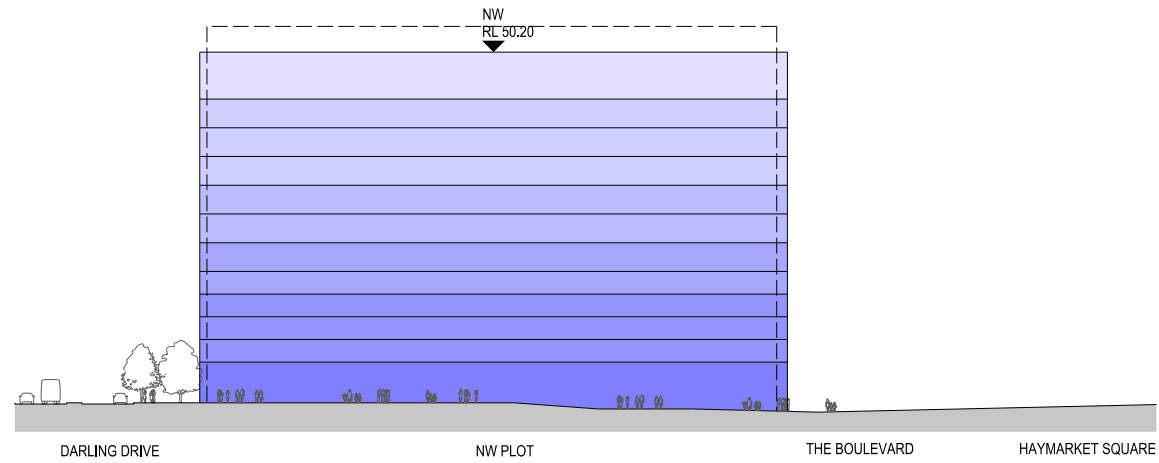
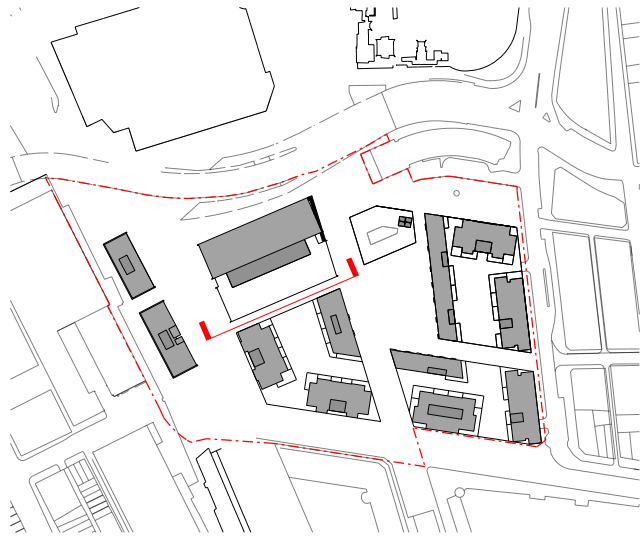
7428A MCD AR D172
FOR INFORMATION ONLY
1:500 @ A1
0 5 25m

REV A
15/03/2013

DENTON
CORKER
MARSHALL

THE HAYMARKET
LEND LEASE DEVELOPMENT

DEVELOPMENT APPLICATION
ILLUSTRATIVE SCHEME
NORTH ELEVATION
FROM DICKSON'S LANE



LEGEND
 MAXIMUM
 PARAMETER
 FOOTPRINTS
 FOR BUILDINGS
 - - - - -



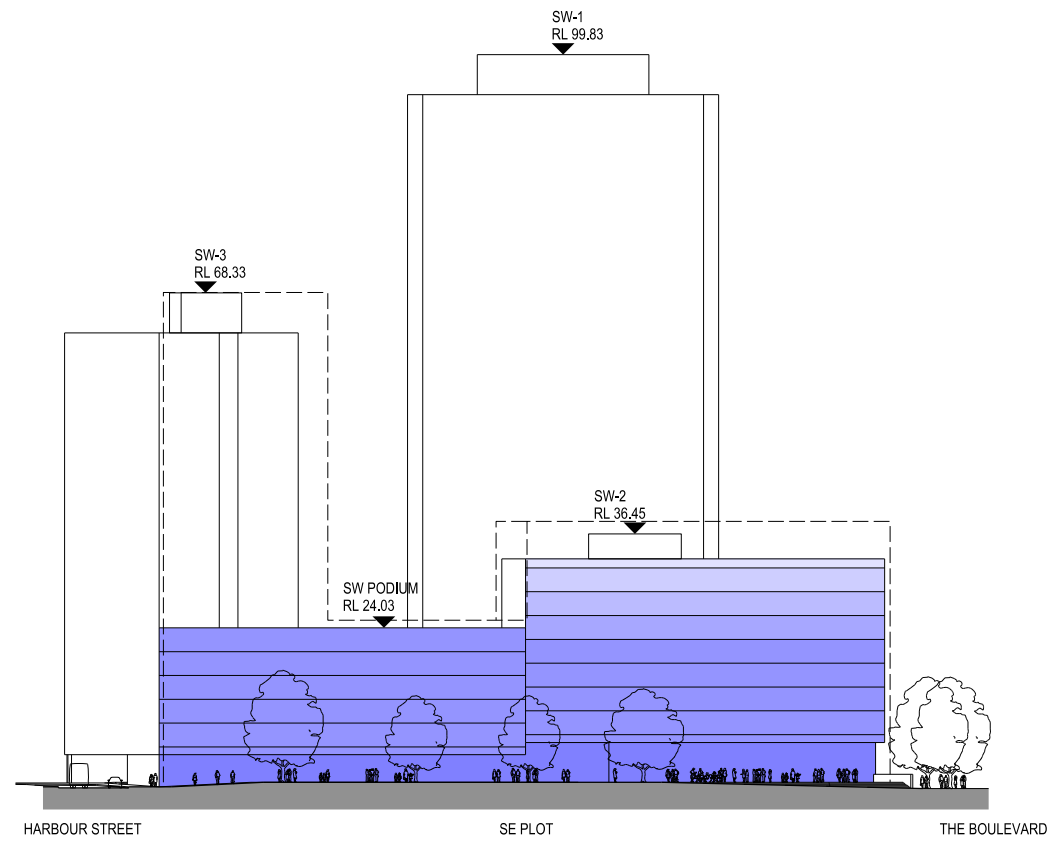
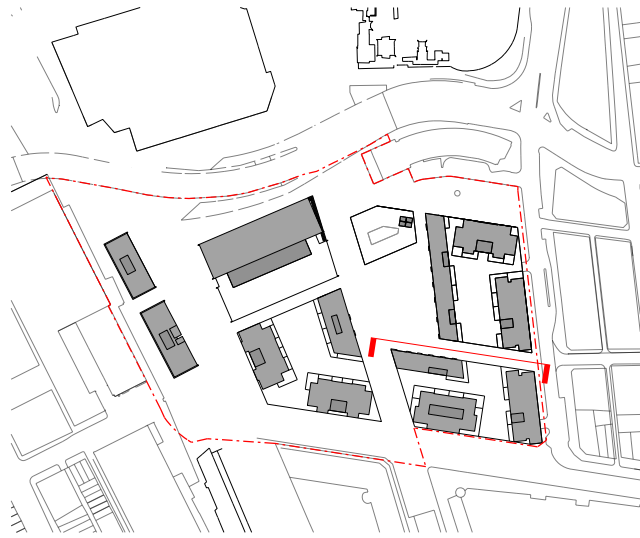
7428A MCD AR D173
 FOR INFORMATION ONLY
 1:500 @ A1
 0 5 25m

REV A
 15/03/2013

DENTON
 CORKER
 MARSHALL

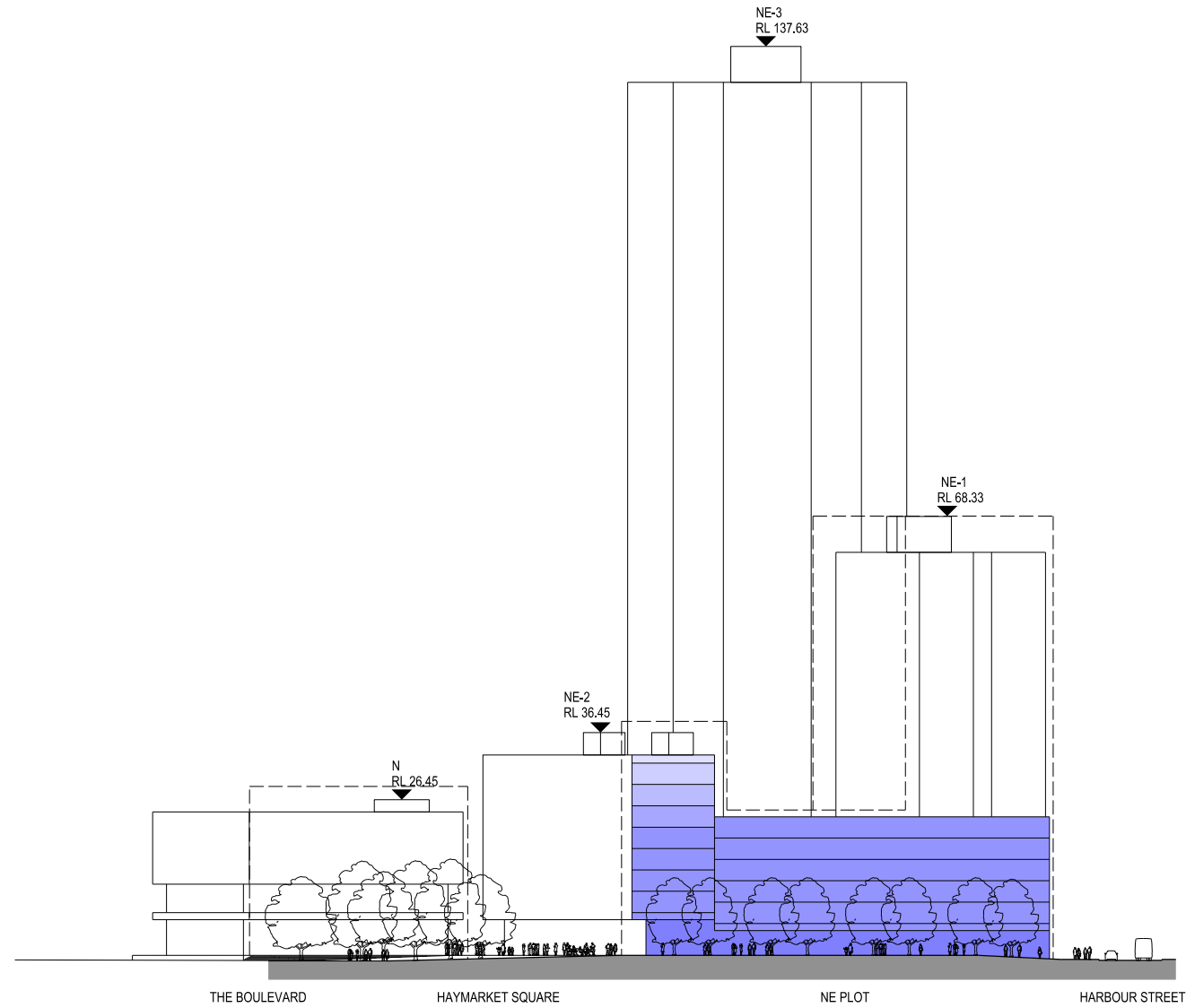
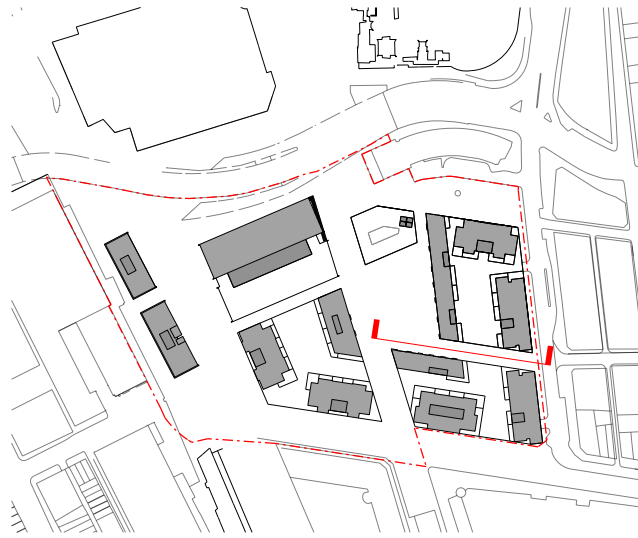
THE HAYMARKET
 LEND LEASE DEVELOPMENT

DEVELOPMENT APPLICATION
 ILLUSTRATIVE SCHEME
 SOUTH ELEVATION FROM DICKSON'S LANE



LEGEND

MAXIMUM
PARAMETER
ENVELOPES
FOR BUILDINGS



LEGEND
 MAXIMUM
 PARAMETER
 ENVELOPES
 FOR BUILDINGS



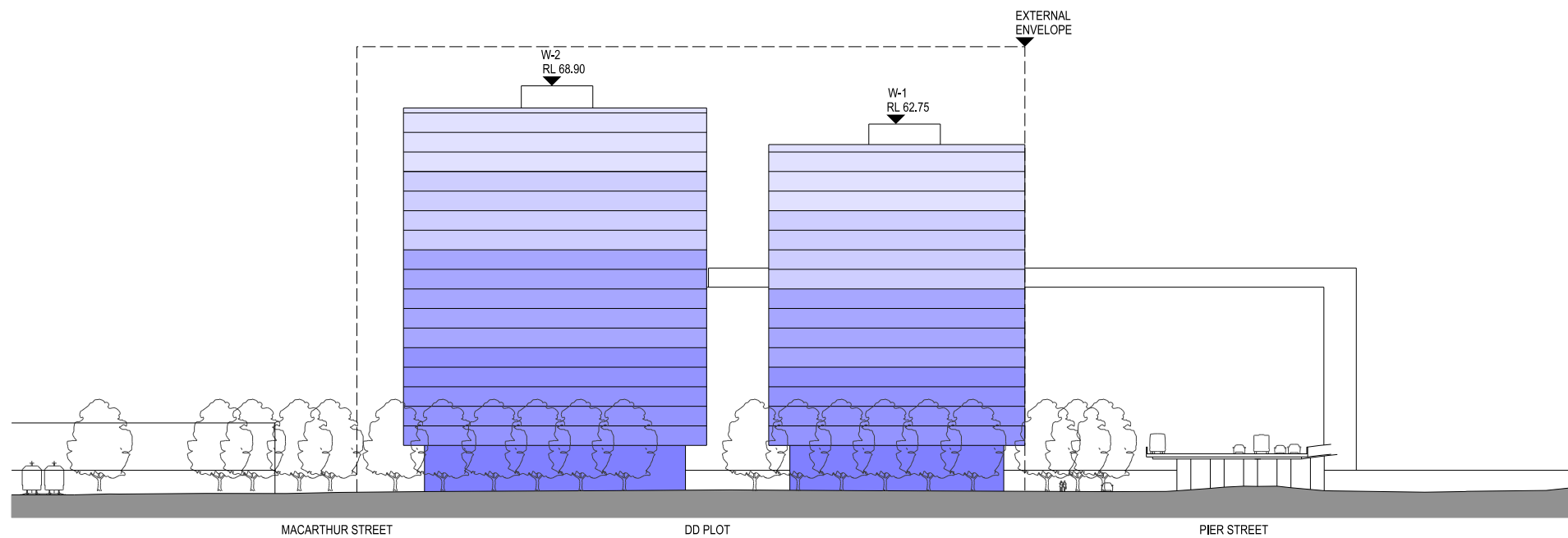
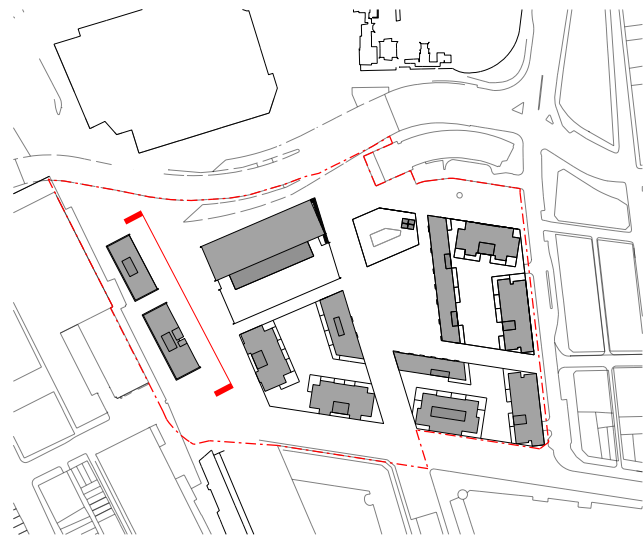
7428A MCD AR D175
 FOR INFORMATION ONLY
 1:500 @ A1
 0 5 25m

REV A
 15/03/2013

DENTON
 CORKER
 MARSHALL

THE HAYMARKET
 LEND LEASE DEVELOPMENT

DEVELOPMENT APPLICATION
 ILLUSTRATIVE SCHEME
 SOUTH ELEVATION
 FROM LITTLE HAY STREET



LEGEND
 MAXIMUM
 PARAMETER
 ENVELOPES
 FOR BUILDINGS



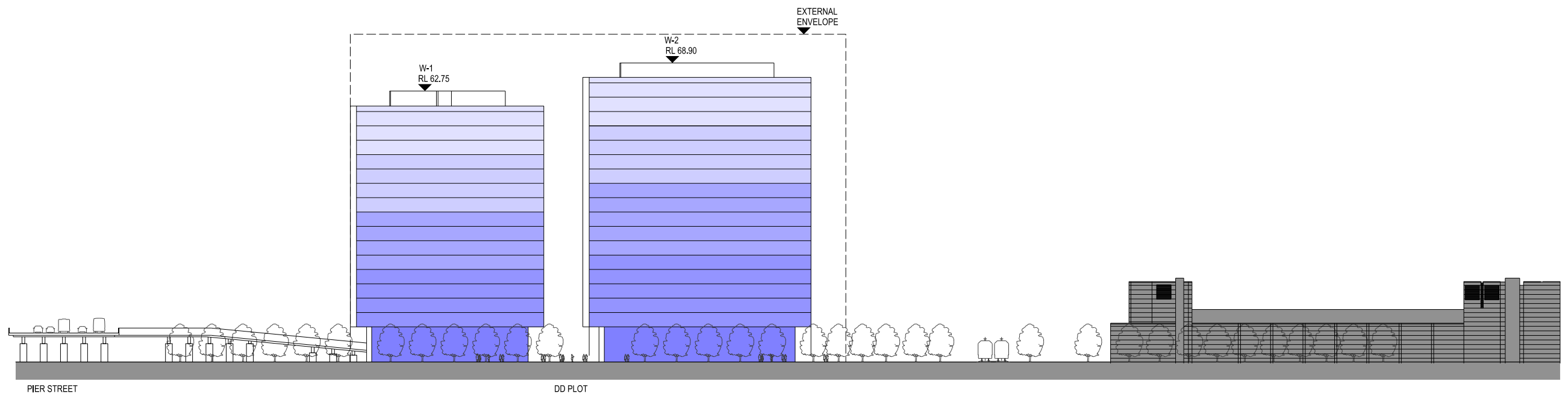
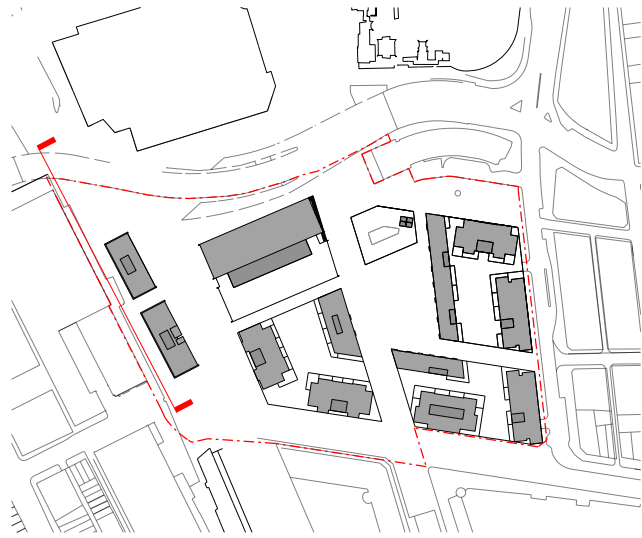
7428A MCD AR D176
 FOR INFORMATION ONLY
 1:500 @ A1
 0 5 25m

REV A
 19/03/2013

DENTON
 CORKER
 MARSHALL

THE HAYMARKET
 LEND LEASE DEVELOPMENT

DEVELOPMENT APPLICATION
 ILLUSTRATIVE SCHEME
 EAST ELEVATION
 FROM DARLING DRIVE



LEGEND

MAXIMUM
PARAMETER
ENVELOPES
FOR BUILDINGS



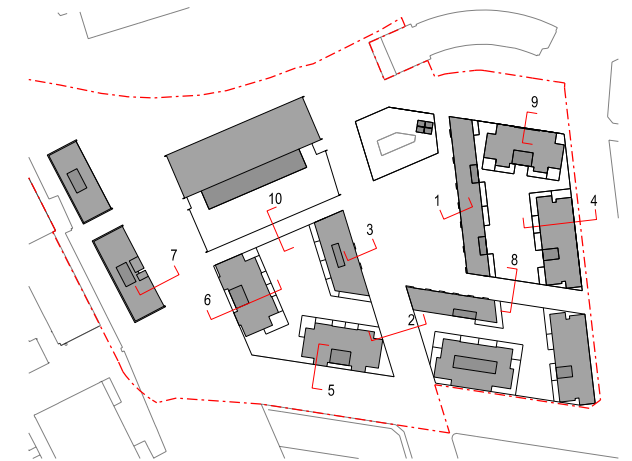
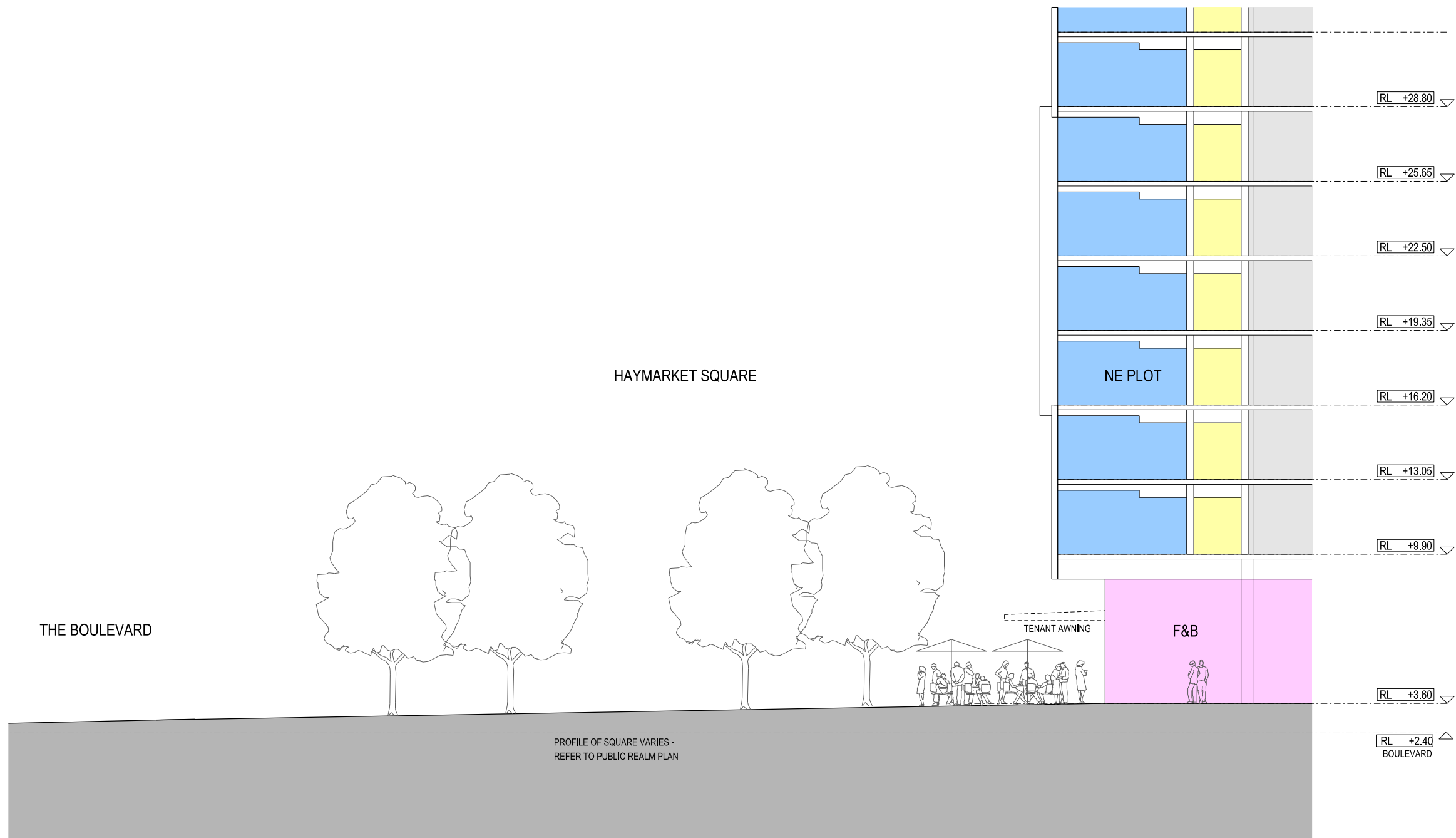
7428A MCD AR D177
FOR INFORMATION ONLY
1:500 @ A1
0 5 25m

REV A
19/03/2013

DENTON
CORKER
MARSHALL

THE HAYMARKET
LEND LEASE DEVELOPMENT

DEVELOPMENT APPLICATION
ILLUSTRATIVE SCHEME
WEST ELEVATION
FROM DARLING DRIVE



GENERAL NOTE
THE RETAIL SECTIONS REPRESENT A RANGE OF INDICATIVE BUILDING EDGE/PUBLIC DOMAIN INTERFACE OPTIONS. A SINGLE OPTION OR COMBINATION OF THESE OPTIONS MAYBE ADOPTED THROUGHOUT THE DEVELOPMENT AND WILL BE DETERMINED BY THE LOCALISED INTERFACE CONDITIONS. ALL BUILDING EDGE/PUBLIC DOMAIN INTERFACES WILL BE THE SUBJECT OF FURTHER DETAILED DEVELOPMENT WITHIN THE STAGE 2 DEVELOPMENT APPLICATIONS.

LEGEND

COMMUNITY	RESIDENTIAL	RETAIL	CAR PARK	SERVICES	OFFICE	IQ HUB	CIRCULATION	LOBBY	STUDENT ACCOMMODATION
-----------	-------------	--------	----------	----------	--------	--------	-------------	-------	-----------------------



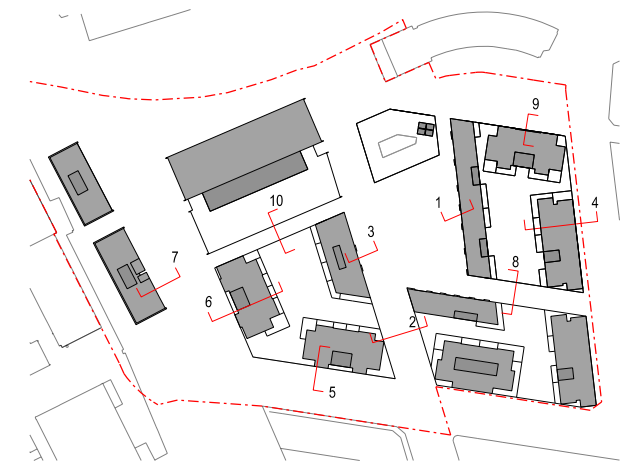
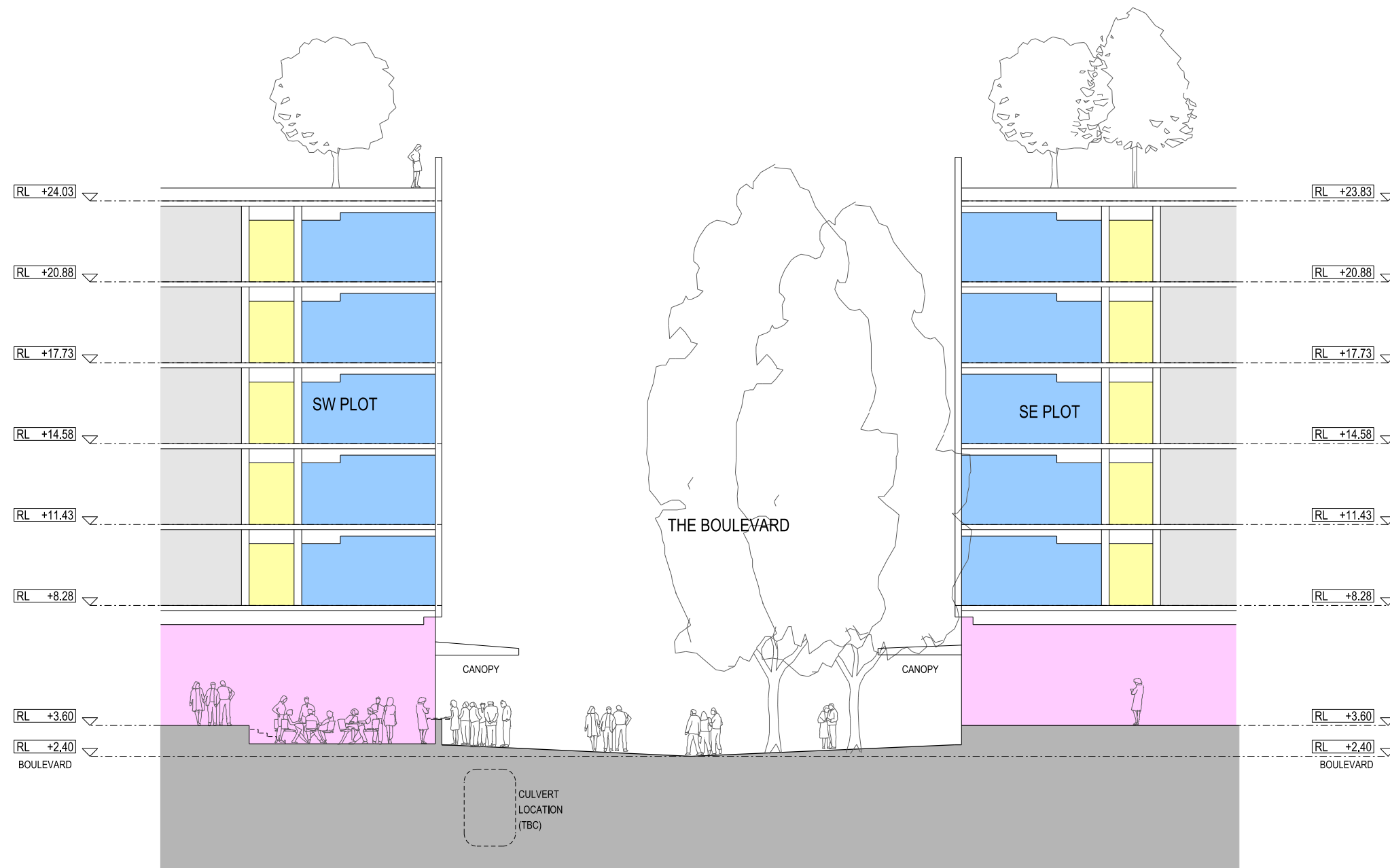
7428A MCD AR D130
FOR INFORMATION ONLY
1:100 @ A1
0 1 5m

REV C
15/03/2013

DENTON
CORKER
MARSHALL

THE HAYMARKET
LEND LEASE DEVELOPMENT

DEVELOPMENT APPLICATION
ILLUSTRATIVE SCHEME
RETAIL DETAILED SECTION 01
HAYMARKET SQUARE



GENERAL NOTE
THE RETAIL SECTIONS REPRESENT A RANGE OF INDICATIVE BUILDING EDGE/PUBLIC DOMAIN INTERFACE OPTIONS. A SINGLE OPTION OR COMBINATION OF THESE OPTIONS MAYBE ADOPTED THROUGHOUT THE DEVELOPMENT AND WILL BE DETERMINED BY THE LOCALISED INTERFACE CONDITIONS. ALL BUILDING EDGE/PUBLIC DOMAIN INTERFACES WILL BE THE SUBJECT OF FURTHER DETAILED DEVELOPMENT WITHIN THE STAGE 2 DEVELOPMENT APPLICATIONS.

LEGEND

COMMUNITY	RESIDENTIAL	RETAIL	CAR PARK	SERVICES	OFFICE	IQ HUB	CIRCULATION	LOBBY	STUDENT ACCOMMODATION
-----------	-------------	--------	----------	----------	--------	--------	-------------	-------	-----------------------



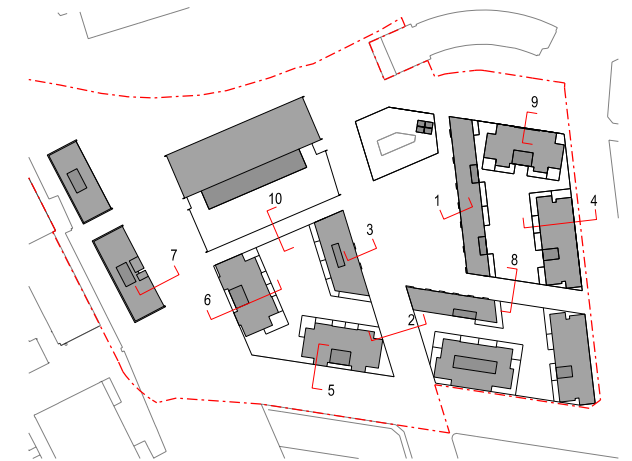
7428A MCD AR D131
FOR INFORMATION ONLY
1:100 @ A1
0 1 5m

REV C
15/03/2013

DENTON
CORKER
MARSHALL

THE HAYMARKET
LEND LEASE DEVELOPMENT

DEVELOPMENT APPLICATION
ILLUSTRATIVE SCHEME
RETAIL DETAILED SECTION 02
BOULEVARD EAST



GENERAL NOTE
THE RETAIL SECTIONS REPRESENT A RANGE OF INDICATIVE BUILDING EDGE/PUBLIC DOMAIN INTERFACE OPTIONS. A SINGLE OPTION OR COMBINATION OF THESE OPTIONS MAYBE ADOPTED THROUGHOUT THE DEVELOPMENT AND WILL BE DETERMINED BY THE LOCALISED INTERFACE CONDITIONS. ALL BUILDING EDGE/PUBLIC DOMAIN INTERFACES WILL BE THE SUBJECT OF FURTHER DETAILED DEVELOPMENT WITHIN THE STAGE 2 DEVELOPMENT APPLICATIONS.

LEGEND

COMMUNITY	RESIDENTIAL	RETAIL	CAR PARK	SERVICES	OFFICE	IQ HUB	CIRCULATION	LOBBY	STUDENT ACCOMMODATION
-----------	-------------	--------	----------	----------	--------	--------	-------------	-------	-----------------------



7428A MCD AR D132
FOR INFORMATION ONLY
1:100 @ A1
0 1 5m

REV A
15/03/2013

DENTON
CORKER
MARSHALL

THE HAYMARKET
LEND LEASE DEVELOPMENT

DEVELOPMENT APPLICATION
ILLUSTRATIVE SCHEME
RETAIL DETAILED SECTION 03
BOULEVARD WEST



GENERAL NOTE
THE RETAIL SECTIONS REPRESENT A RANGE OF INDICATIVE BUILDING EDGE/PUBLIC DOMAIN INTERFACE OPTIONS. A SINGLE OPTION OR COMBINATION OF THESE OPTIONS MAYBE ADOPTED THROUGHOUT THE DEVELOPMENT AND WILL BE DETERMINED BY THE LOCALISED INTERFACE CONDITIONS. ALL BUILDING EDGE/PUBLIC DOMAIN INTERFACES WILL BE THE SUBJECT OF FURTHER DETAILED DEVELOPMENT WITHIN THE STAGE 2 DEVELOPMENT APPLICATIONS.

LEGEND

COMMUNITY	RESIDENTIAL	RETAIL	CAR PARK	SERVICES	OFFICE	IQ HUB	CIRCULATION	LOBBY	STUDENT ACCOMMODATION
-----------	-------------	--------	----------	----------	--------	--------	-------------	-------	-----------------------



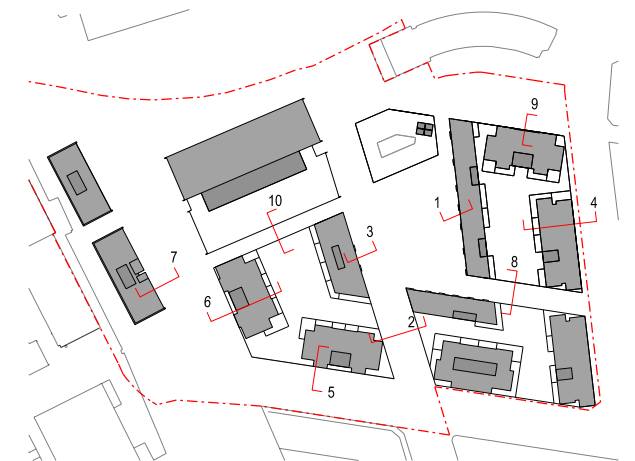
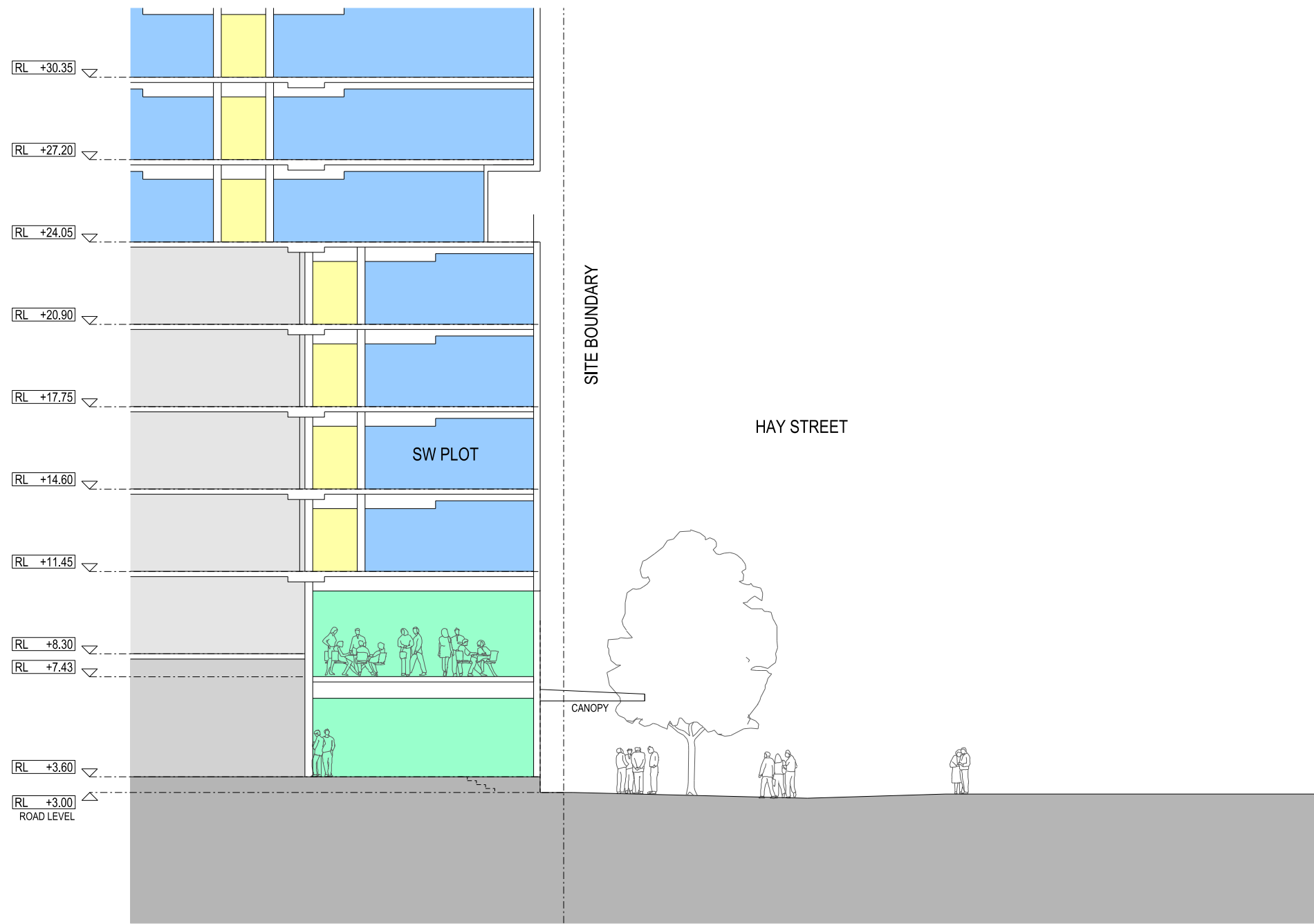
7428A MCD AR D133
FOR INFORMATION ONLY
1:100 @ A1
0 1 5m

REV A
15/03/2013

DENTON
CORKER
MARSHALL

THE HAYMARKET
LEND LEASE DEVELOPMENT

DEVELOPMENT APPLICATION
ILLUSTRATIVE SCHEME
RETAIL DETAILED SECTION 04
HARBOUR STREET



GENERAL NOTE
THE RETAIL SECTIONS REPRESENT A RANGE OF INDICATIVE BUILDING EDGE/PUBLIC DOMAIN INTERFACE OPTIONS. A SINGLE OPTION OR COMBINATION OF THESE OPTIONS MAYBE ADOPTED THROUGHOUT THE DEVELOPMENT AND WILL BE DETERMINED BY THE LOCALISED INTERFACE CONDITIONS. ALL BUILDING EDGE/PUBLIC DOMAIN INTERFACES WILL BE THE SUBJECT OF FURTHER DETAILED DEVELOPMENT WITHIN THE STAGE 2 DEVELOPMENT APPLICATIONS.

LEGEND

COMMUNITY	RESIDENTIAL	RETAIL	CAR PARK	SERVICES	OFFICE	IQ HUB	CIRCULATION	LOBBY	STUDENT ACCOMMODATION
-----------	-------------	--------	----------	----------	--------	--------	-------------	-------	-----------------------



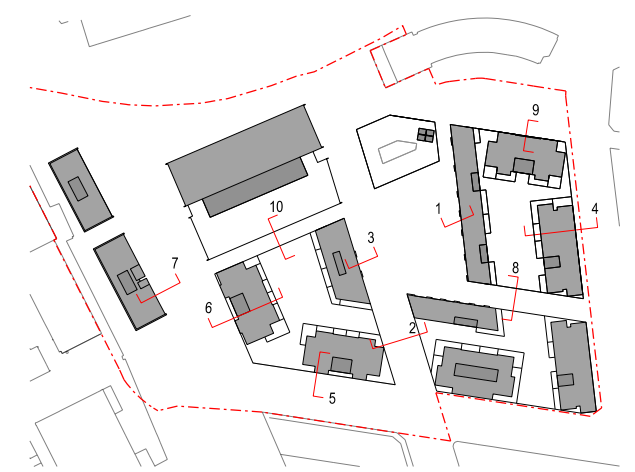
7428A MCD AR D134
FOR INFORMATION ONLY
1:100 @ A1
0 1 5m

REV A
15/03/2013

DENTON
CORKER
MARSHALL

THE HAYMARKET
LEND LEASE DEVELOPMENT

DEVELOPMENT APPLICATION
ILLUSTRATIVE SCHEME
RETAIL DETAILED SECTION 05
HAY STREET



GENERAL NOTE
 THE RETAIL SECTIONS REPRESENT A RANGE OF INDICATIVE BUILDING EDGE/PUBLIC DOMAIN INTERFACE OPTIONS. A SINGLE OPTION OR COMBINATION OF THESE OPTIONS MAYBE ADOPTED THROUGHOUT THE DEVELOPMENT AND WILL BE DETERMINED BY THE LOCALISED INTERFACE CONDITIONS. ALL BUILDING EDGE/PUBLIC DOMAIN INTERFACES WILL BE THE SUBJECT OF FURTHER DETAILED DEVELOPMENT WITHIN THE STAGE 2 DEVELOPMENT APPLICATIONS.

LEGEND

COMMUNITY	RESIDENTIAL	RETAIL	CAR PARK	SERVICES	OFFICE	IQ HUB	CIRCULATION	LOBBY	STUDENT ACCOMMODATION
-----------	-------------	--------	----------	----------	--------	--------	-------------	-------	-----------------------



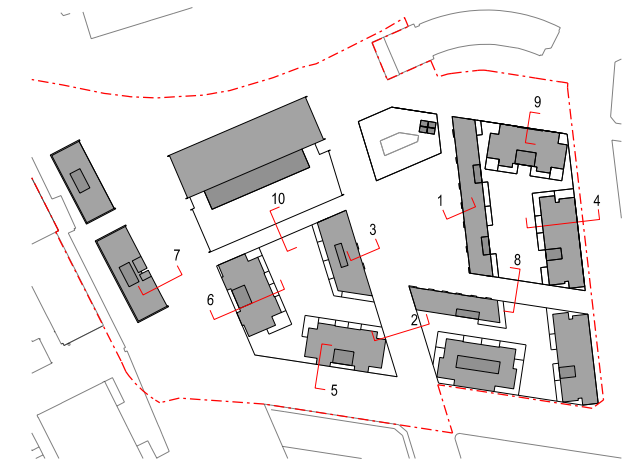
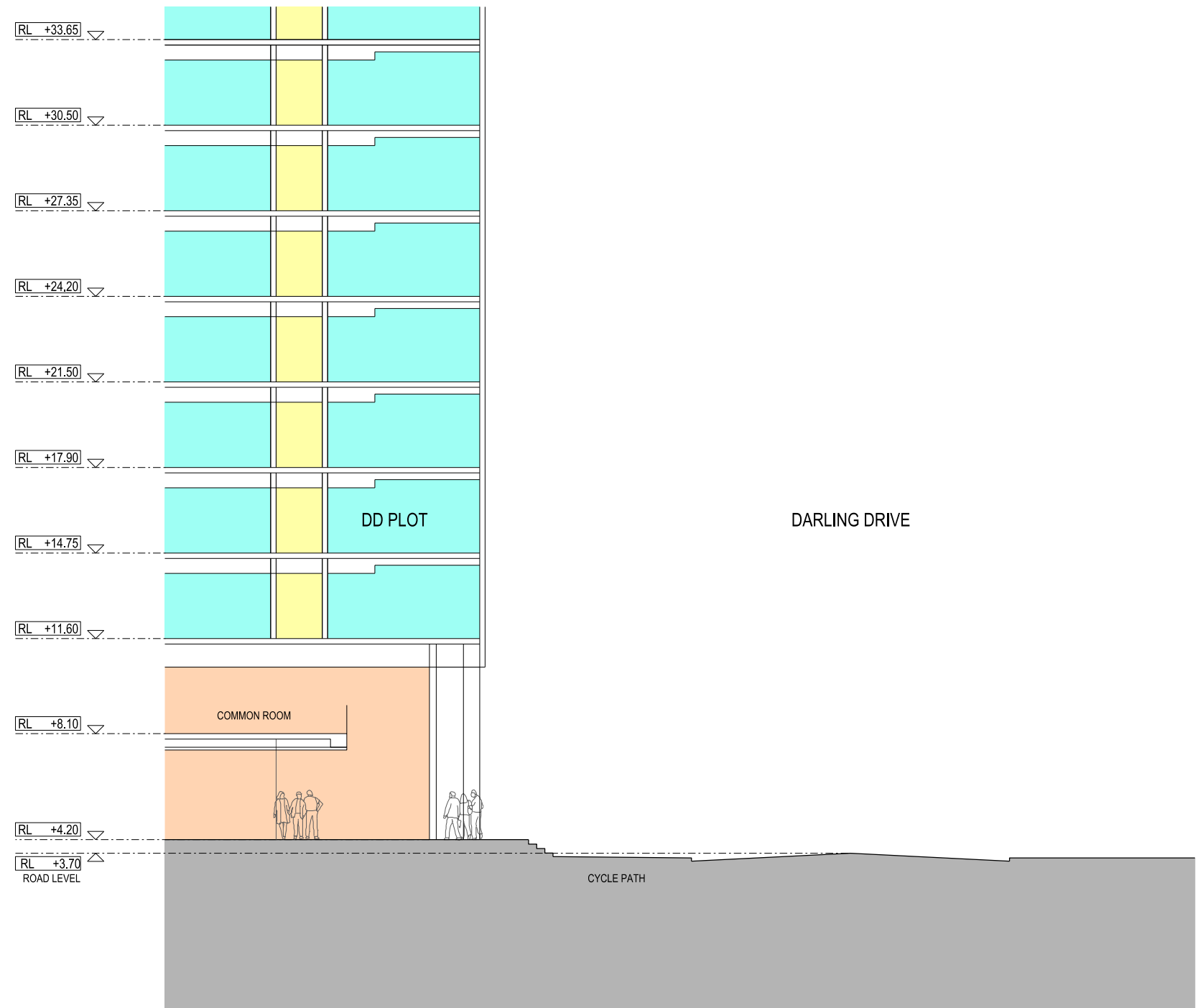
7428A MCD AR D135
 FOR INFORMATION ONLY
 1:100 @ A1
 0 1 5m

REV A
 15/03/2013

DENTON
 CORKER
 MARSHALL

THE HAYMARKET
 LEND LEASE DEVELOPMENT

DEVELOPMENT APPLICATION
 ILLUSTRATIVE SCHEME
 RETAIL DETAILED SECTION 06
 HAY STREET



GENERAL NOTE
THE RETAIL SECTIONS REPRESENT A RANGE OF INDICATIVE BUILDING EDGE/PUBLIC DOMAIN INTERFACE OPTIONS. A SINGLE OPTION OR COMBINATION OF THESE OPTIONS MAYBE ADOPTED THROUGHOUT THE DEVELOPMENT AND WILL BE DETERMINED BY THE LOCALISED INTERFACE CONDITIONS. ALL BUILDING EDGE/PUBLIC DOMAIN INTERFACES WILL BE THE SUBJECT OF FURTHER DETAILED DEVELOPMENT WITHIN THE STAGE 2 DEVELOPMENT APPLICATIONS.

LEGEND

COMMUNITY	RESIDENTIAL	RETAIL	CAR PARK	SERVICES	OFFICE	IQ HUB	CIRCULATION	LOBBY	STUDENT ACCOMMODATION
-----------	-------------	--------	----------	----------	--------	--------	-------------	-------	-----------------------



7428A MCD AR D136
FOR INFORMATION ONLY
1:100 @ A1
0 1 5m

REV A
15/03/2013

DENTON
CORKER
MARSHALL

THE HAYMARKET
LEND LEASE DEVELOPMENT

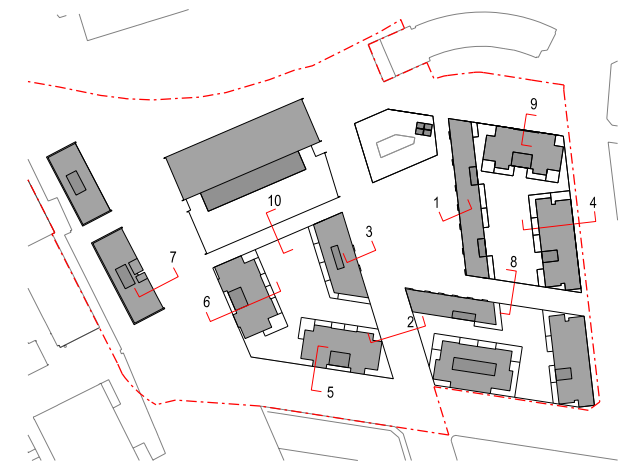
DEVELOPMENT APPLICATION
ILLUSTRATIVE SCHEME
RETAIL DETAILED SECTION 07
STUDENT ACCOMODATION



GENERAL NOTE
THE RETAIL SECTIONS REPRESENT A RANGE OF INDICATIVE BUILDING EDGE/PUBLIC DOMAIN INTERFACE OPTIONS. A SINGLE OPTION OR COMBINATION OF THESE OPTIONS MAYBE ADOPTED THROUGHOUT THE DEVELOPMENT AND WILL BE DETERMINED BY THE LOCALISED INTERFACE CONDITIONS. ALL BUILDING EDGE/PUBLIC DOMAIN INTERFACES WILL BE THE SUBJECT OF FURTHER DETAILED DEVELOPMENT WITHIN THE STAGE 2 DEVELOPMENT APPLICATIONS.

LEGEND

COMMUNITY	RESIDENTIAL	RETAIL	CAR PARK	SERVICES	OFFICE	IQ HUB	CIRCULATION	LOBBY	STUDENT ACCOMMODATION
-----------	-------------	--------	----------	----------	--------	--------	-------------	-------	-----------------------



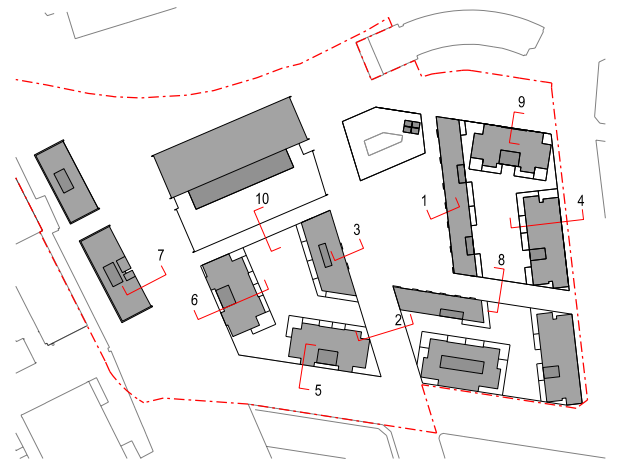
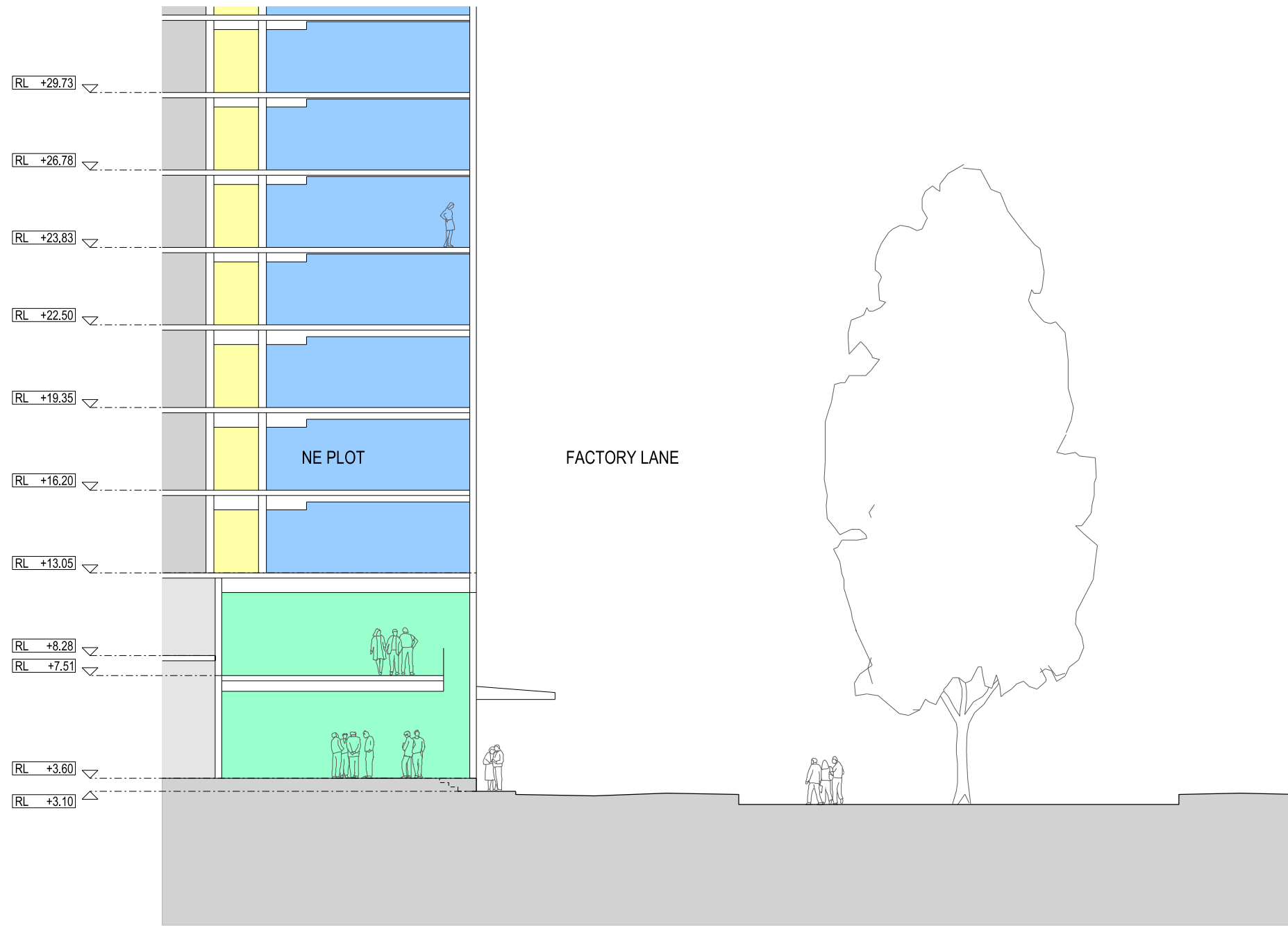
7428A MCD AR D137
FOR INFORMATION ONLY
1:100 @ A1
0 1 5m

REV A
15/03/2013

DENTON
CORKER
MARSHALL

THE HAYMARKET
LEND LEASE DEVELOPMENT

DEVELOPMENT APPLICATION
ILLUSTRATIVE SCHEME
RETAIL DETAILED SECTION 08
LITTLE HAY STREET



GENERAL NOTE
THE RETAIL SECTIONS REPRESENT A RANGE OF INDICATIVE BUILDING EDGE/PUBLIC DOMAIN INTERFACE OPTIONS. A SINGLE OPTION OR COMBINATION OF THESE OPTIONS MAYBE ADOPTED THROUGHOUT THE DEVELOPMENT AND WILL BE DETERMINED BY THE LOCALISED INTERFACE CONDITIONS. ALL BUILDING EDGE/PUBLIC DOMAIN INTERFACES WILL BE THE SUBJECT OF FURTHER DETAILED DEVELOPMENT WITHIN THE STAGE 2 DEVELOPMENT APPLICATIONS.



7428A MCD AR D138
FOR INFORMATION ONLY
1:100 @ A1
0 1 5m

REV A
15/03/2013

DENTON
CORKER
MARSHALL

THE HAYMARKET
LEND LEASE DEVELOPMENT

DEVELOPMENT APPLICATION
ILLUSTRATIVE SCHEME
RETAIL DETAILED SECTION 09
FACTORY LANE