

# Bullecourt Apartments

Position: P1B

Level: 09

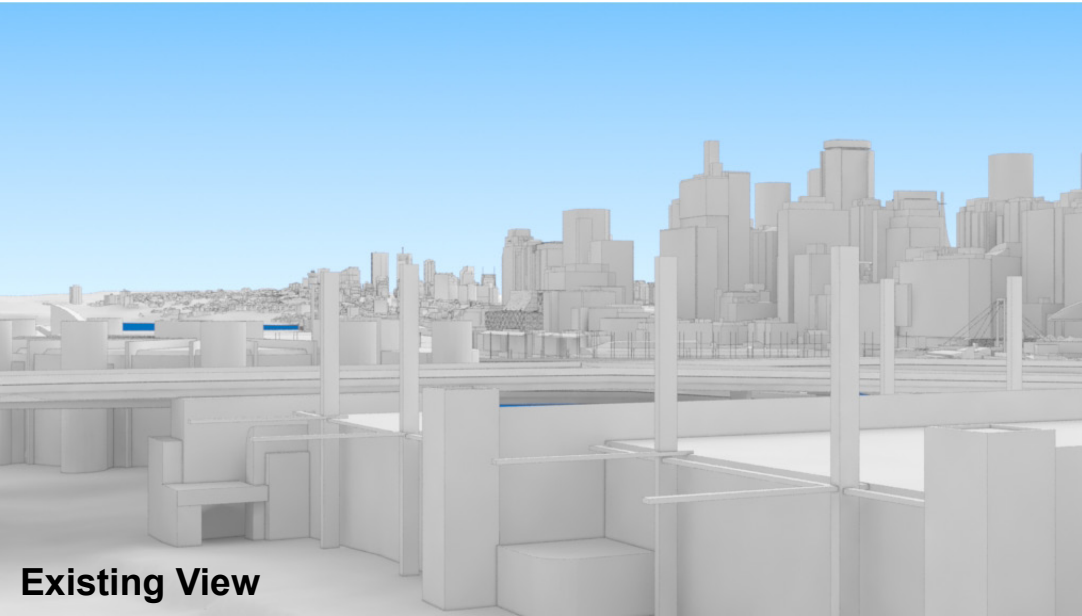
RL: 34.600 (Camera Height)

FOR INFORMATION ONLY

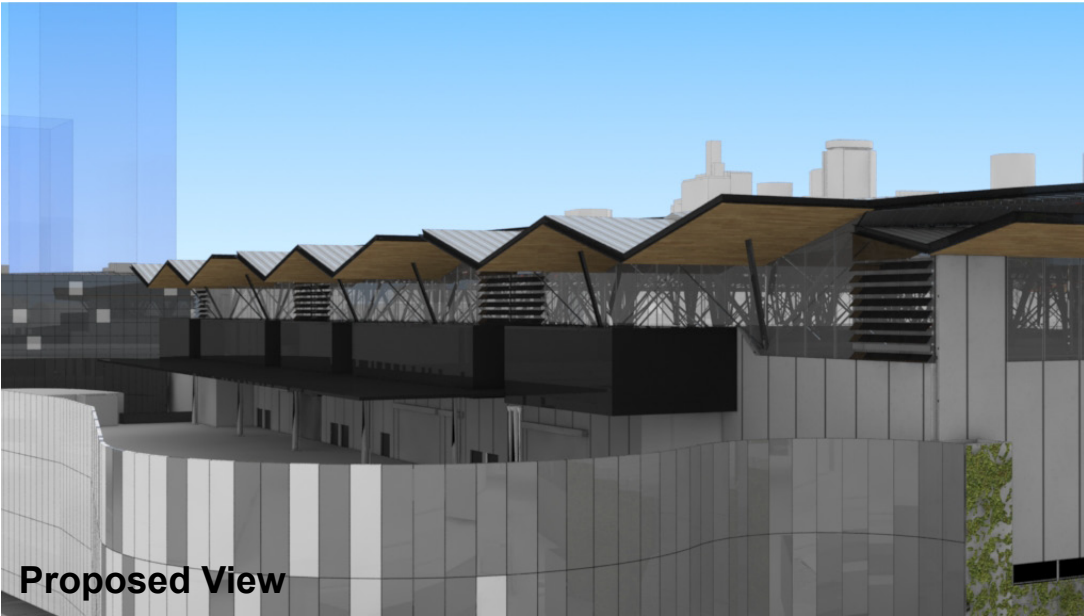
The Hotel shown in these images does not form part of this development application (and will be the subject of a separate development assessment process) and is included for information and broader illustrative purposes. Illustrative designs of built forms in the Haymarket precinct do not form part of this development application (and will be the subject of separate development assessment processes) and is shown for information and broader illustrative purposes. These images are produced here for view analysis purposes only.

LEGEND: 47

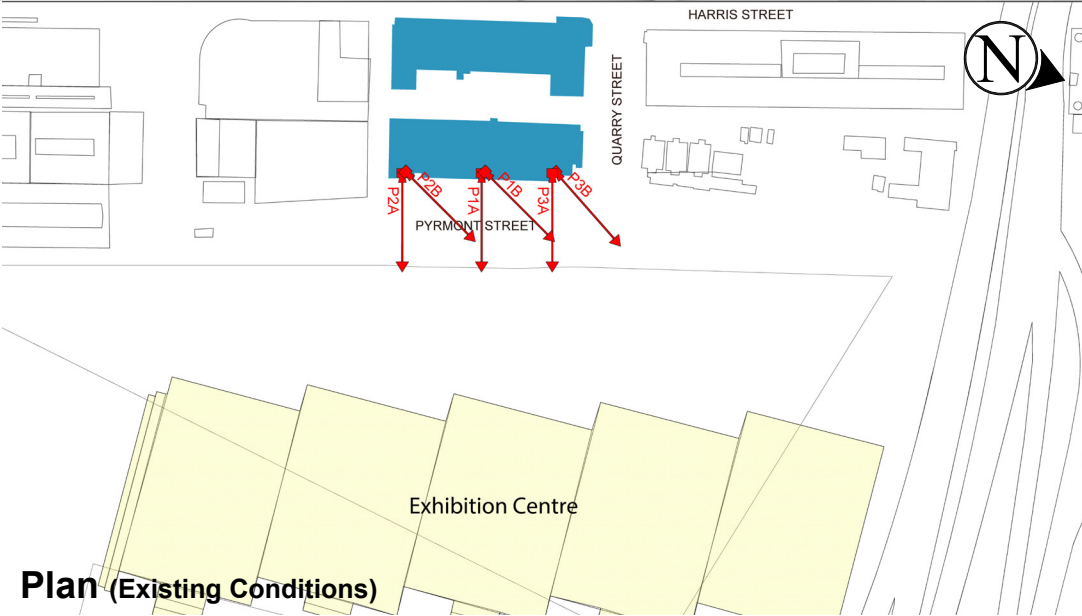
- Key Building
- Neighbouring Buildings
- View Direction (50mm Camera)
- Camera Position
- Hotel (subject of a future separate DA.)



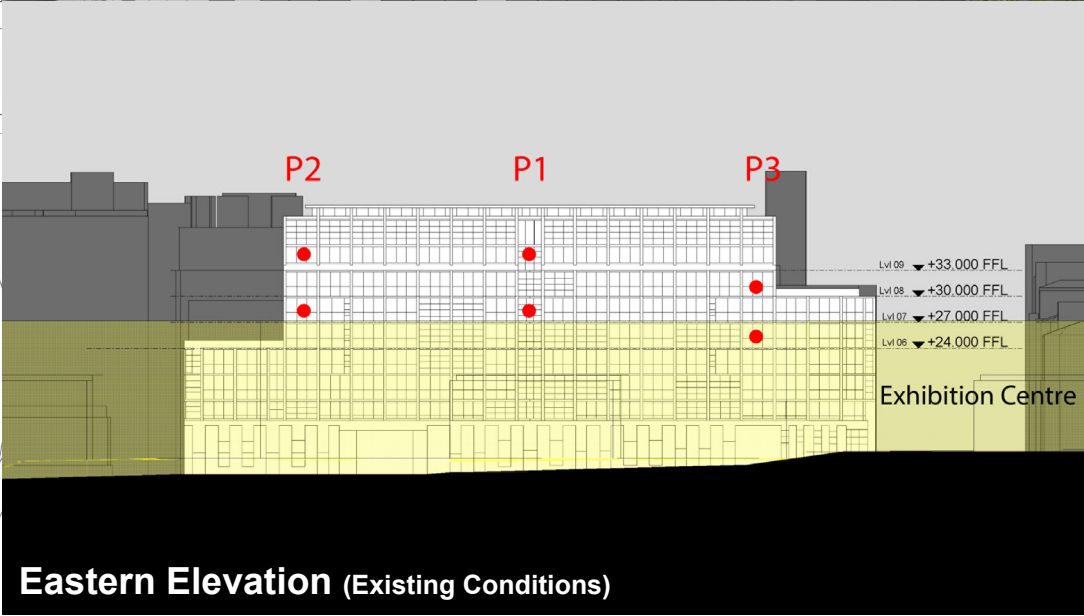
Existing View



Proposed View



Plan (Existing Conditions)



Eastern Elevation (Existing Conditions)

# Bullecourt Apartments

Position: P1B

Level: 07

RL: 28.600 (Camera Height)

FOR INFORMATION ONLY

The Hotel shown in these images does not form part of this development application (and will be the subject of a separate development assessment process) and is included for information and broader illustrative purposes. Illustrative designs of built forms in the Haymarket precinct do not form part of this development application (and will be the subject of separate development assessment processes) and is shown for information and broader illustrative purposes. These images are produced here for view analysis purposes only.

LEGEND:

Key Building

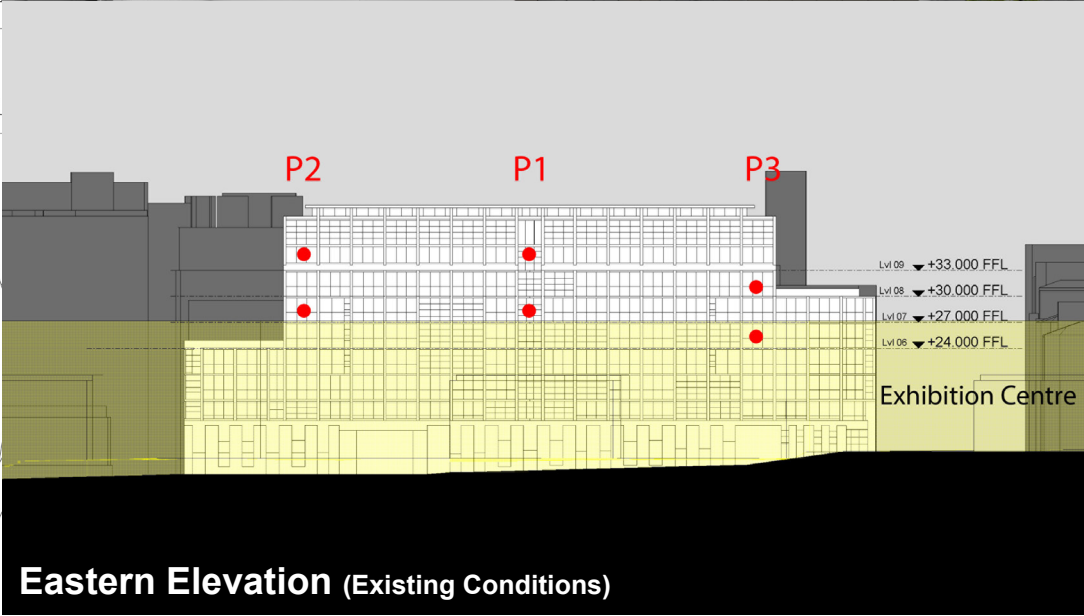
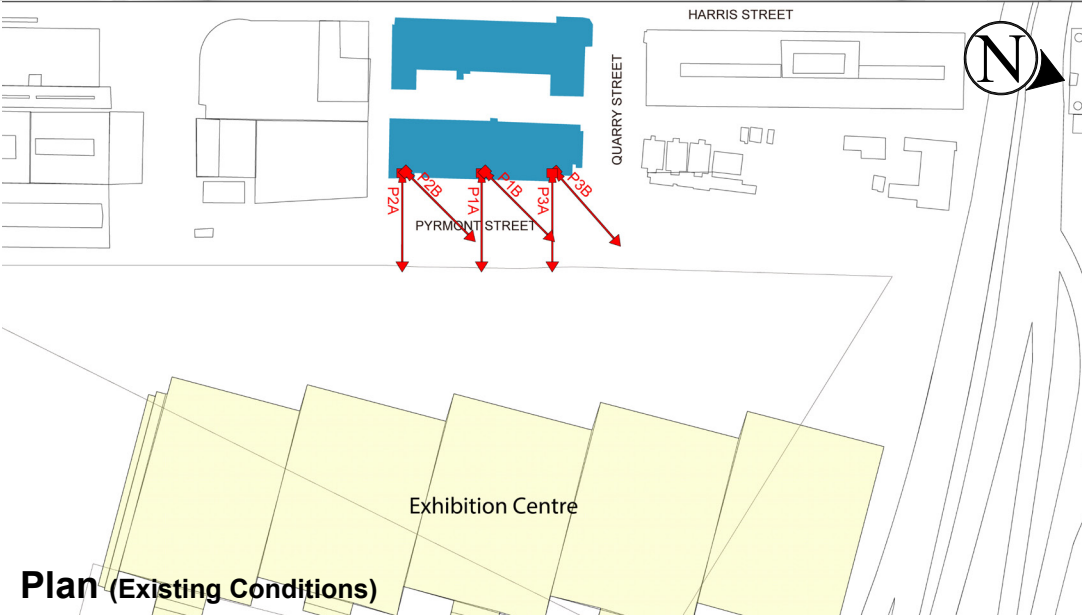
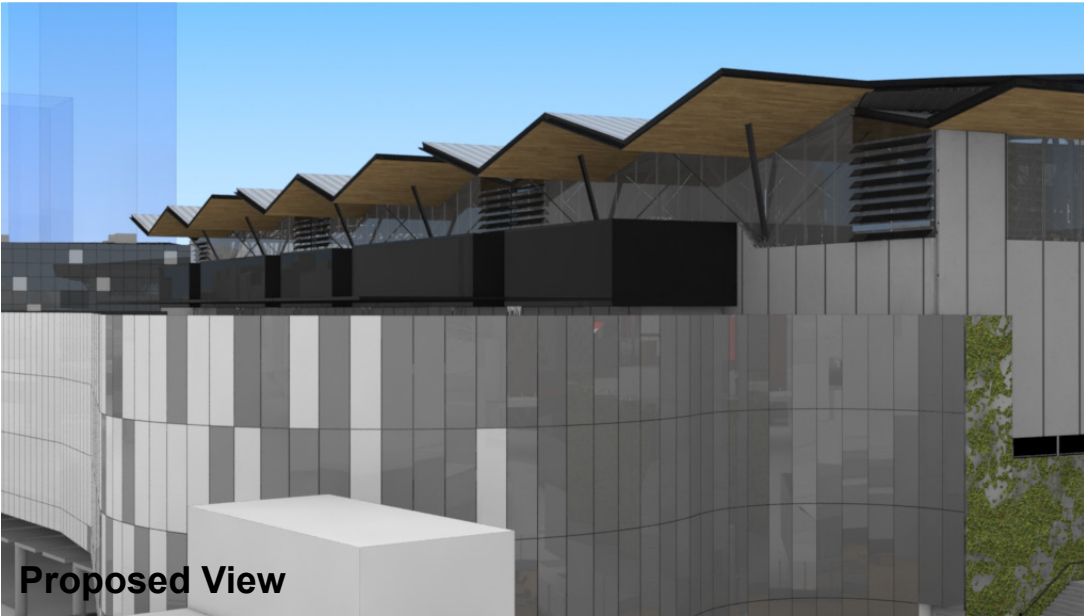
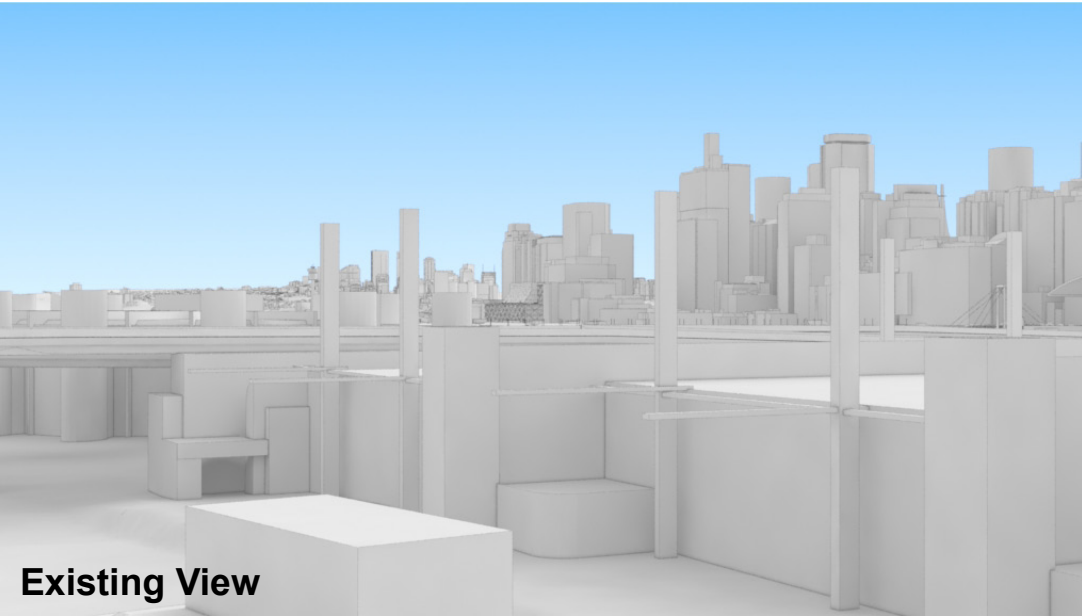
Neighbouring Buildings

View Direction (50mm Camera)

Camera Position

Hotel (subject of a future separate DA.)

48



# Bullecourt Apartments

Position: P2B

Level: 09

RL: 34.600 (Camera Height)

FOR INFORMATION ONLY

The Hotel shown in these images does not form part of this development application (and will be the subject of a separate development assessment process) and is included for information and broader illustrative purposes. Illustrative designs of built forms in the Haymarket precinct do not form part of this development application (and will be the subject of separate development assessment processes) and is shown for information and broader illustrative purposes. These images are produced here for view analysis purposes only.

LEGEND:

51

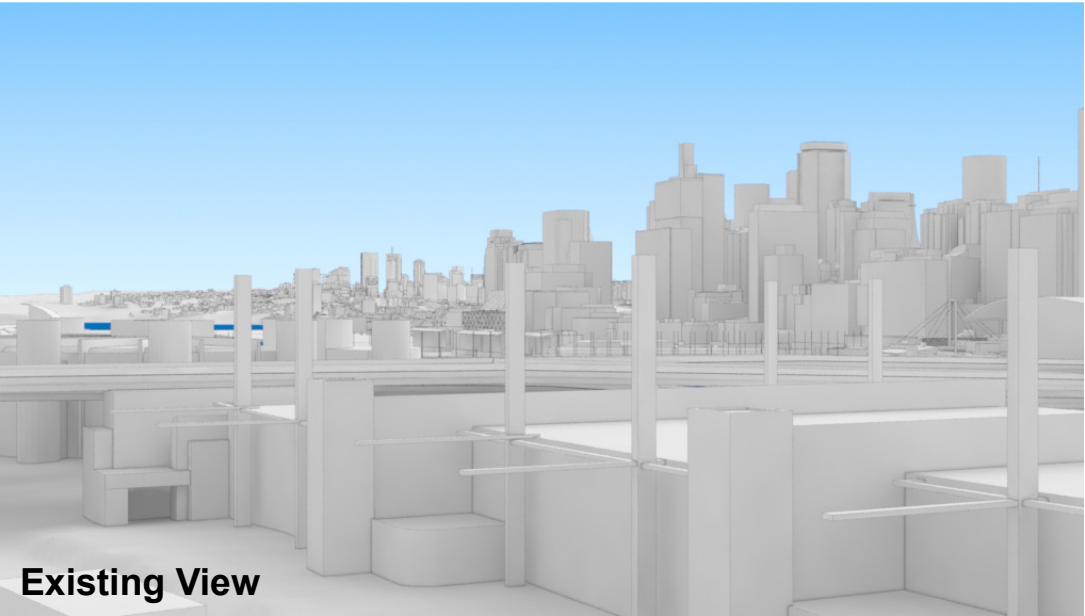
Key Building

Neighbouring Buildings

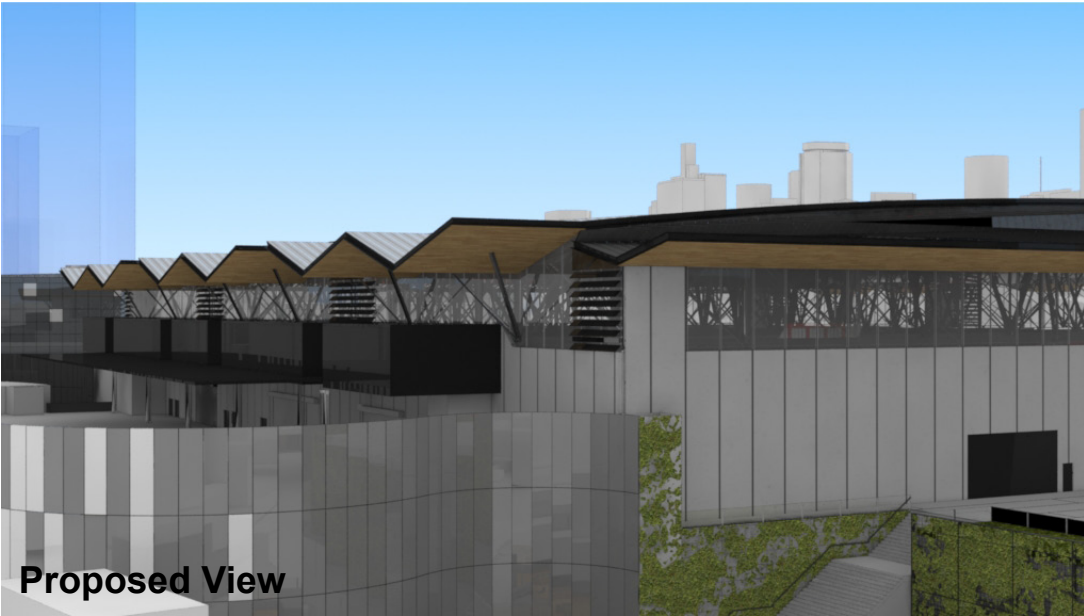
View Direction (50mm Camera)

Camera Position

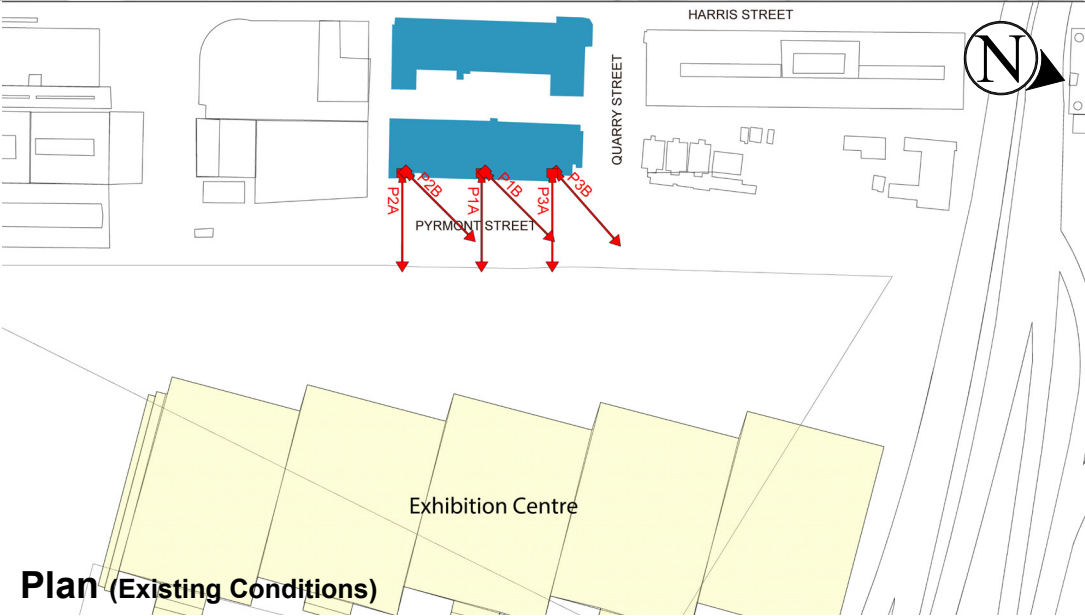
Hotel (subject of a future separate DA.)



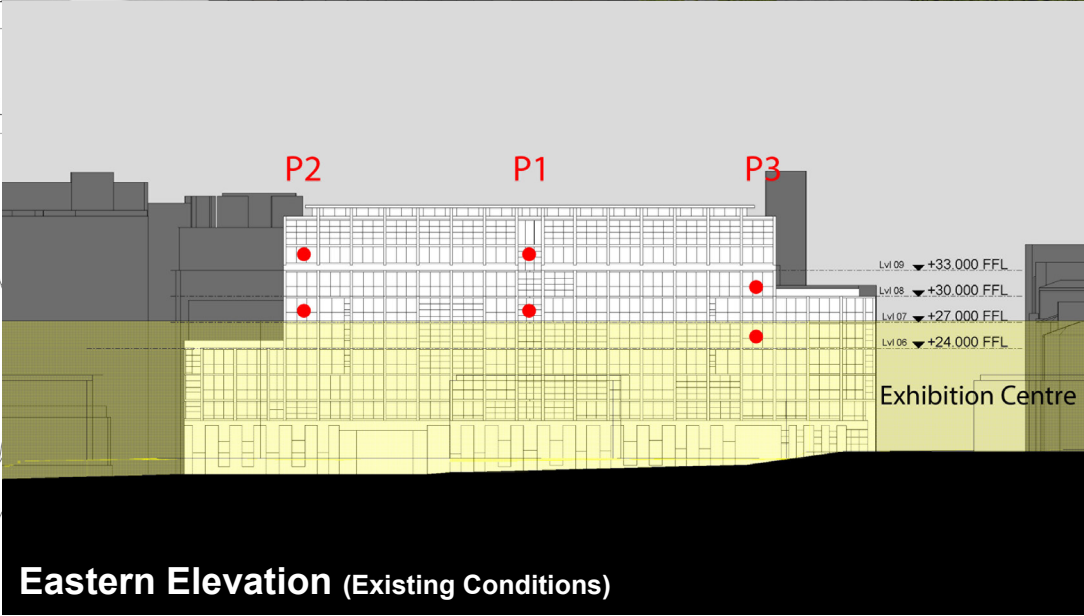
Existing View



Proposed View



Plan (Existing Conditions)



Eastern Elevation (Existing Conditions)



# Bullecourt Apartments

Position: P2B

Level: 07

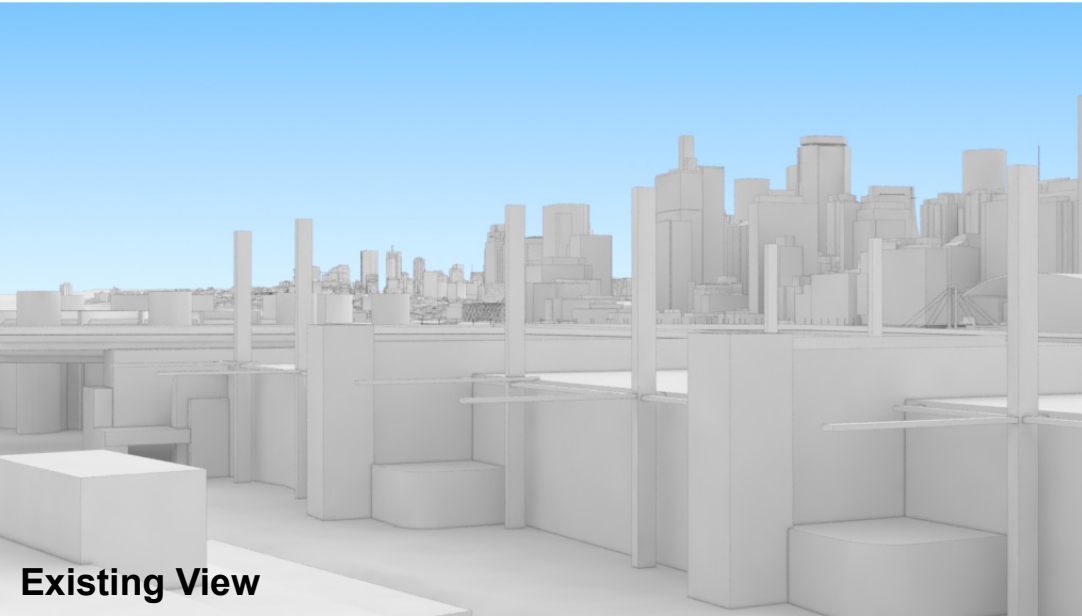
RL: 28.600 (Camera Height)

FOR INFORMATION ONLY

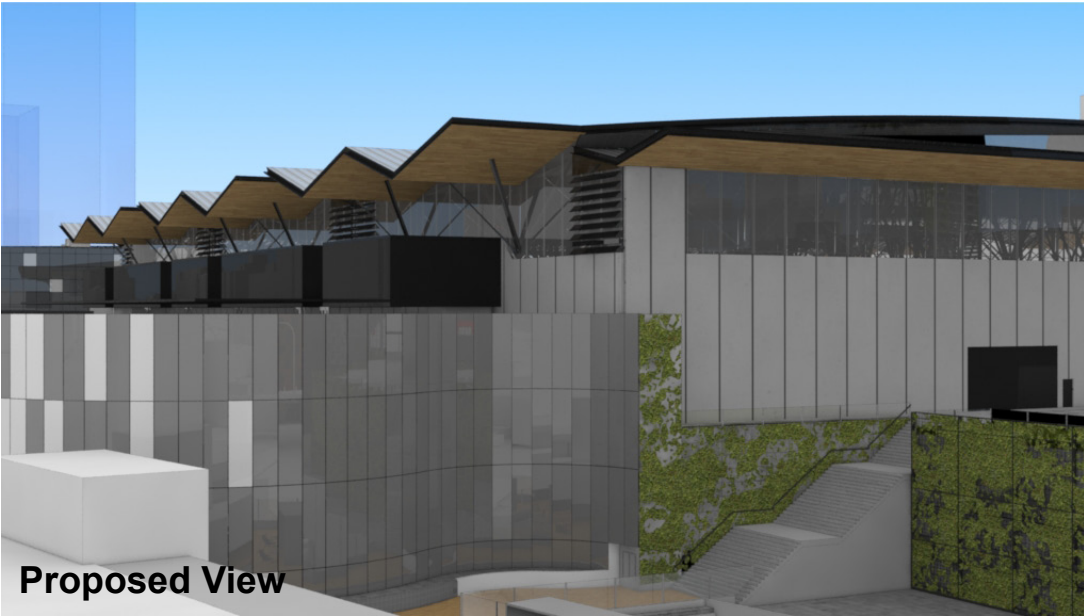
The Hotel shown in these images does not form part of this development application (and will be the subject of a separate development assessment process) and is included for information and broader illustrative purposes. Illustrative designs of built forms in the Haymarket precinct do not form part of this development application (and will be the subject of separate development assessment processes) and is shown for information and broader illustrative purposes. These images are produced here for view analysis purposes only.

LEGEND: 52

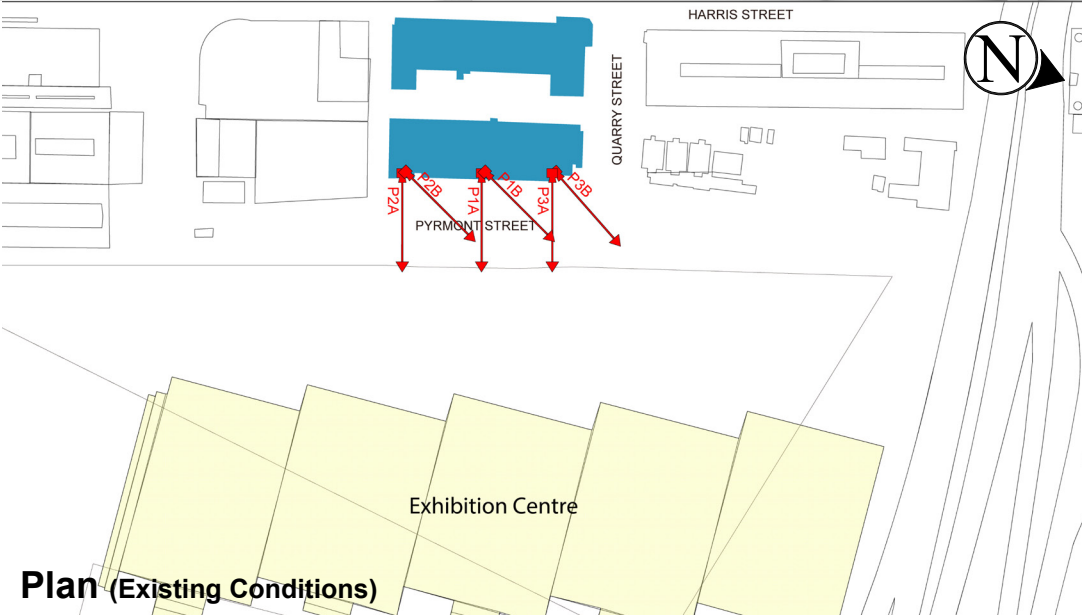
- Key Building
- Neighbouring Buildings
- View Direction (50mm Camera)
- Camera Position
- Hotel (subject of a future separate DA.)



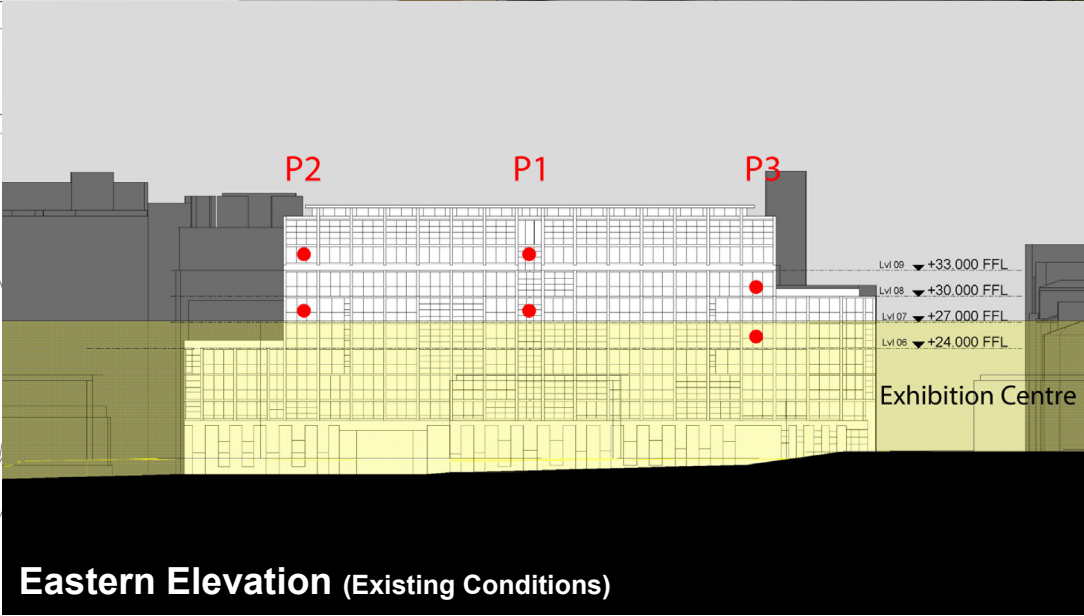
Existing View



Proposed View



Plan (Existing Conditions)



Eastern Elevation (Existing Conditions)

# Bullecourt Apartments

Position: P3B

Level: 08

RL: 31.600 (Camera Height)

FOR INFORMATION ONLY

The Hotel shown in these images does not form part of this development application (and will be the subject of a separate development assessment process) and is included for information and broader illustrative purposes. Illustrative designs of built forms in the Haymarket precinct do not form part of this development application (and will be the subject of separate development assessment processes) and is shown for information and broader illustrative purposes. These images are produced here for view analysis purposes only.

LEGEND:

55

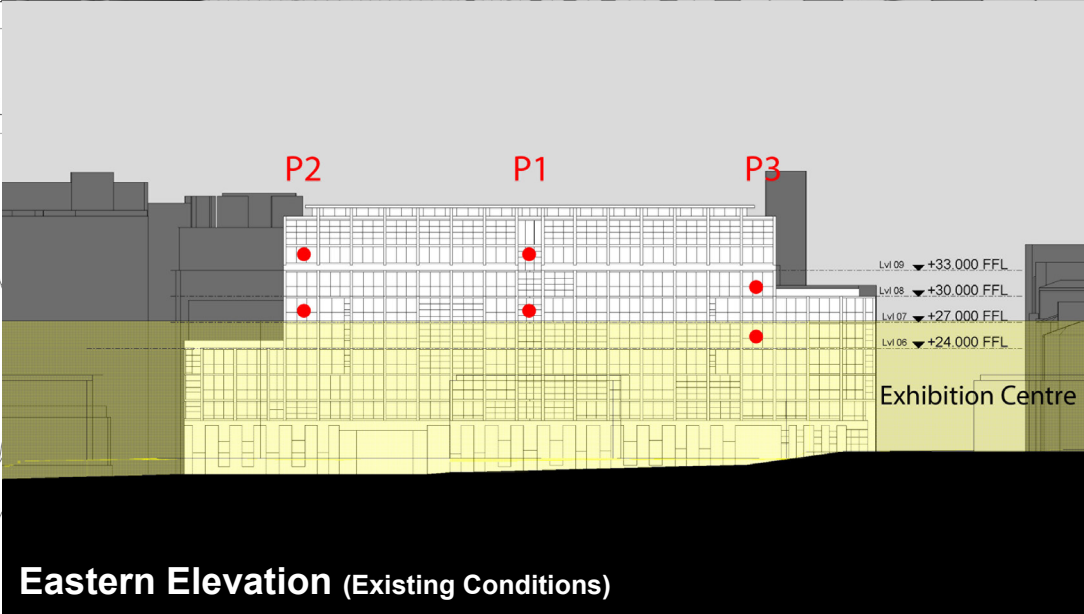
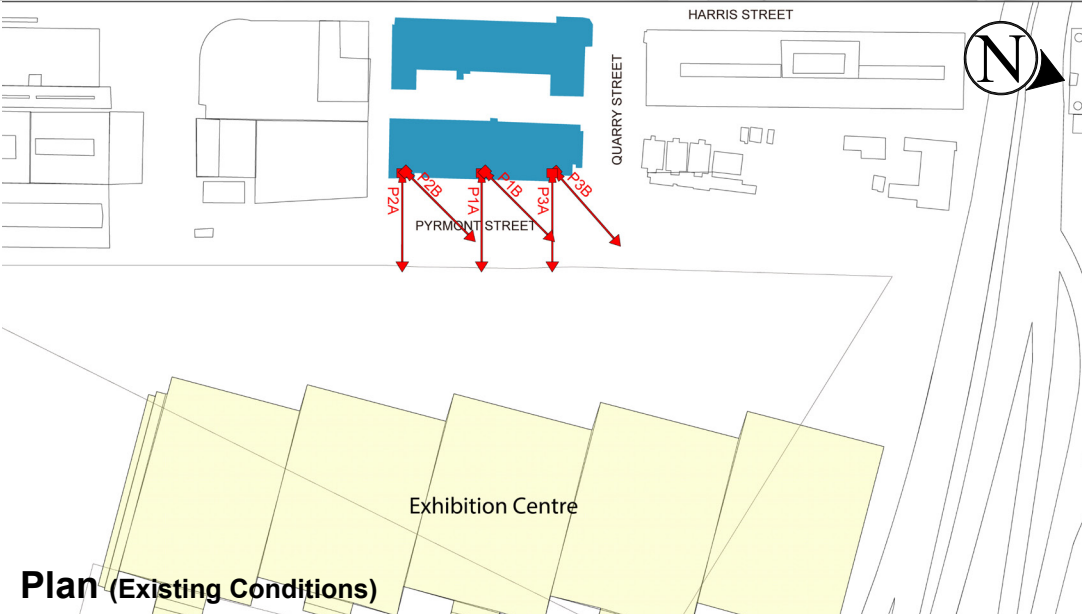
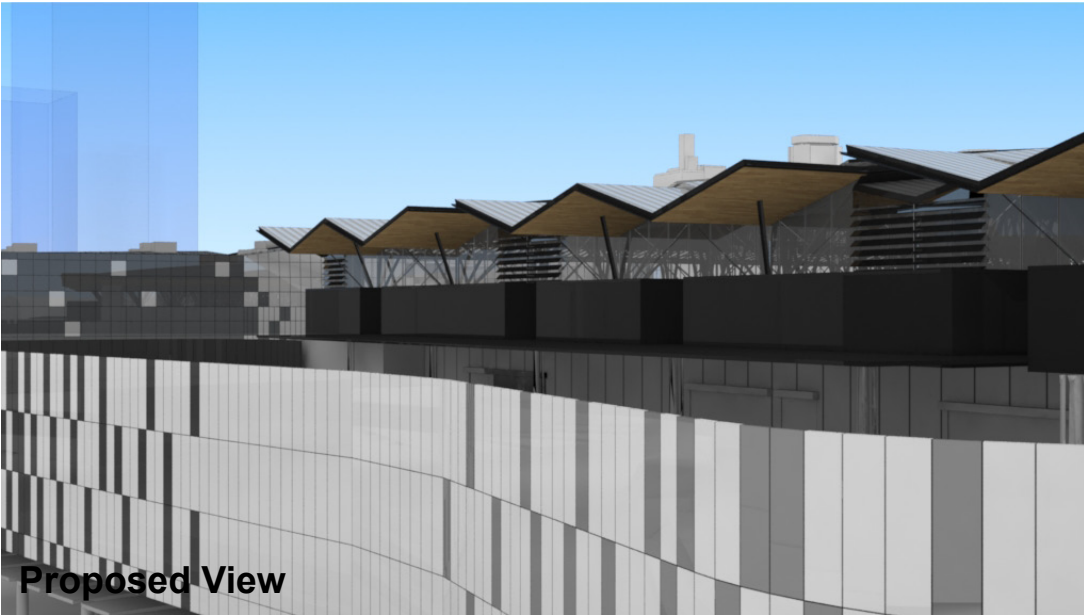
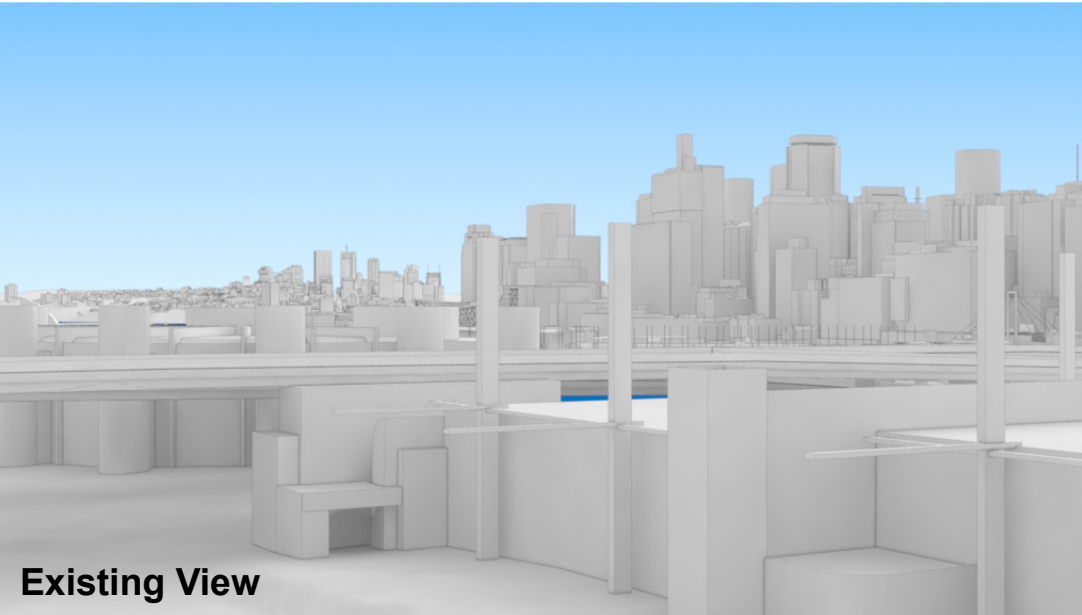
Key Building

Neighbouring Buildings

View Direction (50mm Camera)

Camera Position

Hotel (subject of a future separate DA.)



# Bullecourt Apartments

Position: P3B

Level: 06

RL: 25.600 (Camera Height)

FOR INFORMATION ONLY

The Hotel shown in these images does not form part of this development application (and will be the subject of a separate development assessment process) and is included for information and broader illustrative purposes. Illustrative designs of built forms in the Haymarket precinct do not form part of this development application (and will be the subject of separate development assessment processes) and is shown for information and broader illustrative purposes. These images are produced here for view analysis purposes only.

LEGEND:

56

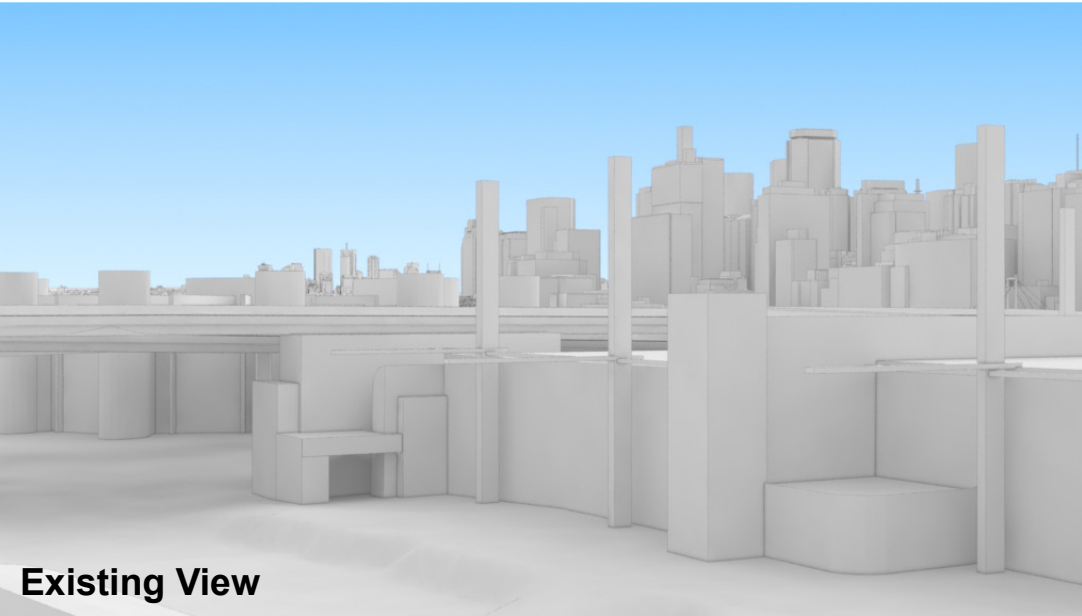
Key Building

Neighbouring Buildings

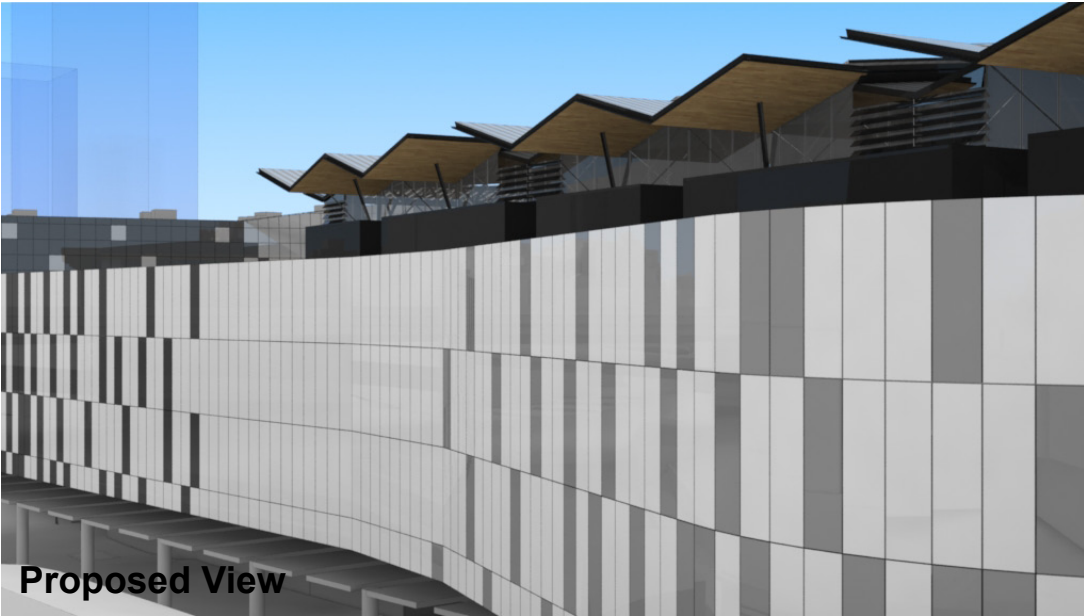
View Direction (50mm Camera)

Camera Position

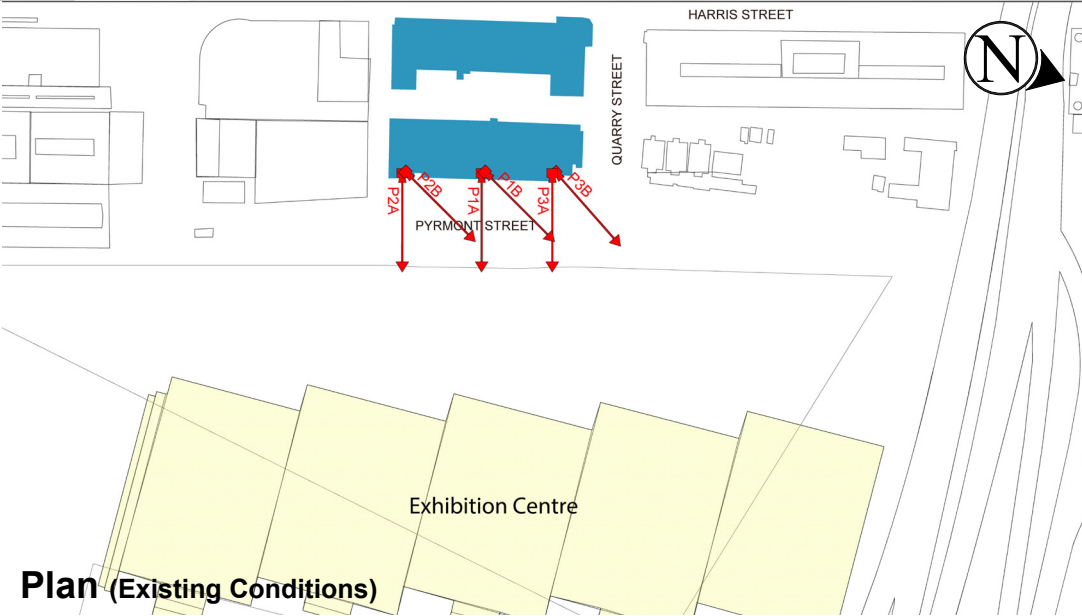
Hotel (subject of a future separate DA.)



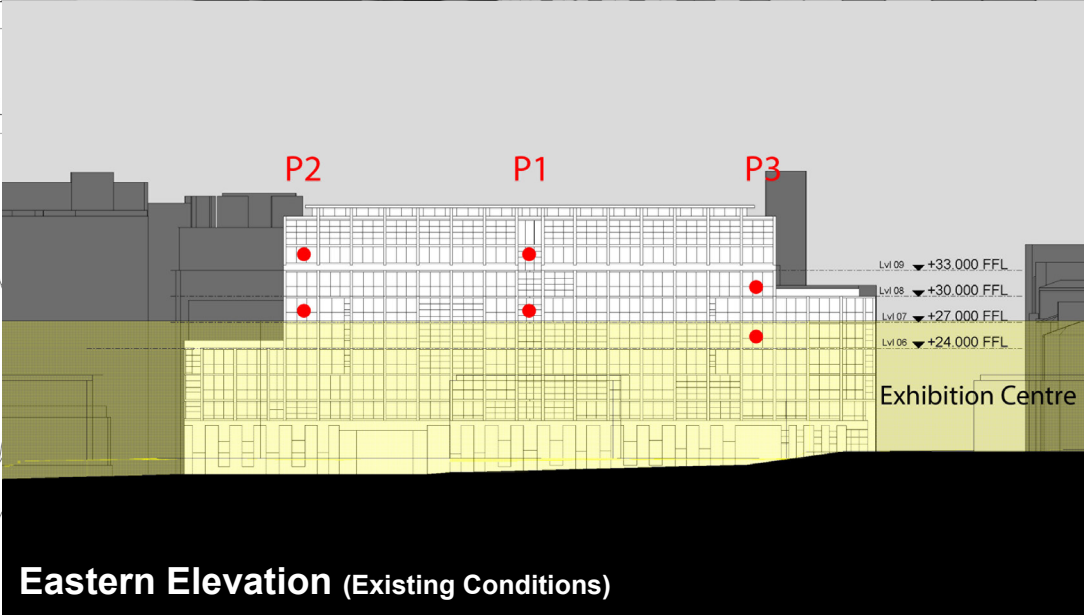
Existing View



Proposed View



Plan (Existing Conditions)



Eastern Elevation (Existing Conditions)





