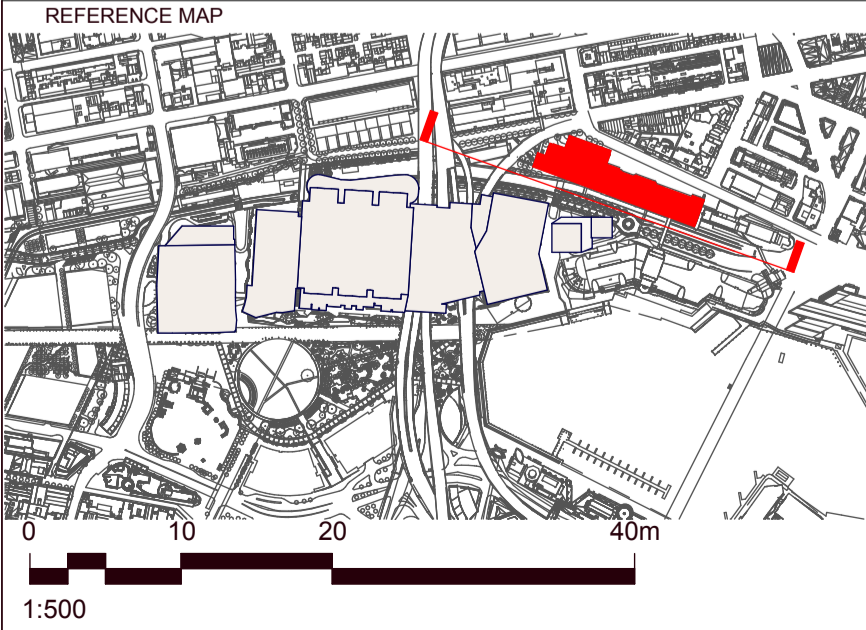


FOR INFORMATION

DARLING HARBOUR LIVE



THESE VIEW IMPACT ANALYSIS DRAWINGS ARE TO BE READ IN CONJUNCTION WITH THE VIEW ANALYSIS REPORT. THE FIELD OF VIEW DOES NOT TAKE INTO ACCOUNT ANY RL'S OF TALLER BUILDINGS BEYOND THE SITE OR REFERENCE BUILDINGS. THE BUILDING ENVELOPE REPRESENTS THE MAXIMUM EXTERNAL ENVELOPE AS SUBMITTED IN THE PARAMETER PLANS.

NOTES

1. DO NOT SCALE DRAWINGS. WRITTEN DIMENSIONS GOVERN.
2. ALL DIMENSIONS ARE IN MILLIMETRES UNLESS NOTED OTHERWISE.
3. ALL DIMENSIONS SHALL BE VERIFIED ON SITE BEFORE PROCEEDING WITH THE WORK. HASSELL + POPULOUS SHALL BE NOTIFIED IN WRITING OF ANY DISCREPANCIES.
4. THESE PLANS ARE TO BE READ IN CONJUNCTION WITH ARCHITECTURAL ENGINEERING DRAWINGS, SECTION 5.7 MATERIALS SCHEDULE AND 5.7 OF THE RETURNABLE SCHEDULES.
5. ALL LEVELS ARE INDICATIVE ONLY BASED ON COMPOSITE SURVEY DATA PROVIDED BY LEND LEASE AND NOT TO BE RELIED UPON FOR COSTING OR CONSTRUCTION PURPOSES.

© COPYRIGHT OF THIS DRAWING IS VESTED IN HASSELL + POPULOUS. 2013 HASSELL + POPULOUS.

THIS DRAWING IS AN UNCONTROLLED COPY. UNLESS NOTED OTHERWISE.

REV	DESCRIPTION	DATE
A	ISSUED FOR CONTRACT CLOSURE	07/03/2013

CLIENT

PROJECT MANAGEMENT & CONSTRUCTION  
LEVEL 4, THE BOND, 30 HICKSON RD  
MILLERS POINT, NSW 2000  
(02) 9236 6111

CONSULTANTS

BUILDING / ENVIRONMENTAL SERVICES  
LEVEL 21, 420 GEORGE STREET  
SYDNEY NSW 2000  
(02) 8934 0000

STRUCTURAL SERVICES  
LEVEL 5, 9 CASTLEREAGH STREET  
SYDNEY NSW 2000  
(02) 8246 3200

CIVIL / TRAFFIC SERVICES  
5/141 WALKER ST, NORTH SYDNEY  
NSW 2060  
(02) 8907 9000

LANDSCAPE ARCHITECT - PRINCIPAL DESIGN CONSULTANT

HASSELL + POPULOUS  
LEVEL 2  
88 CUMBERLAND STREET  
SYDNEY NSW 2000 AUSTRALIA  
SYDNEY@HASSELLSTUDIO.COM  
T +61 2 9101 2000 F +61 2 9101 2100

PROJECT

SICEEP\_DARLING HARBOUR

DRAWING TITLE

VIEW IMPACT ANALYSIS.  
NOVOTEL - ELEVATION -  
WITH HOTEL

STATUS

DEVELOPMENT APPLICATION

SCALE @ A1  
1:500

DRAWN

CO-ORD

REVIEWED

APPROVED

PROJECT NUMBER  
3688

DRAWING NUMBER  
PP\_AR\_2045

REV  
A



## Appendix 4

*TAB 2 – 18-20 ALLEN STREET*

# 18-20 Allen Street

Position: P1

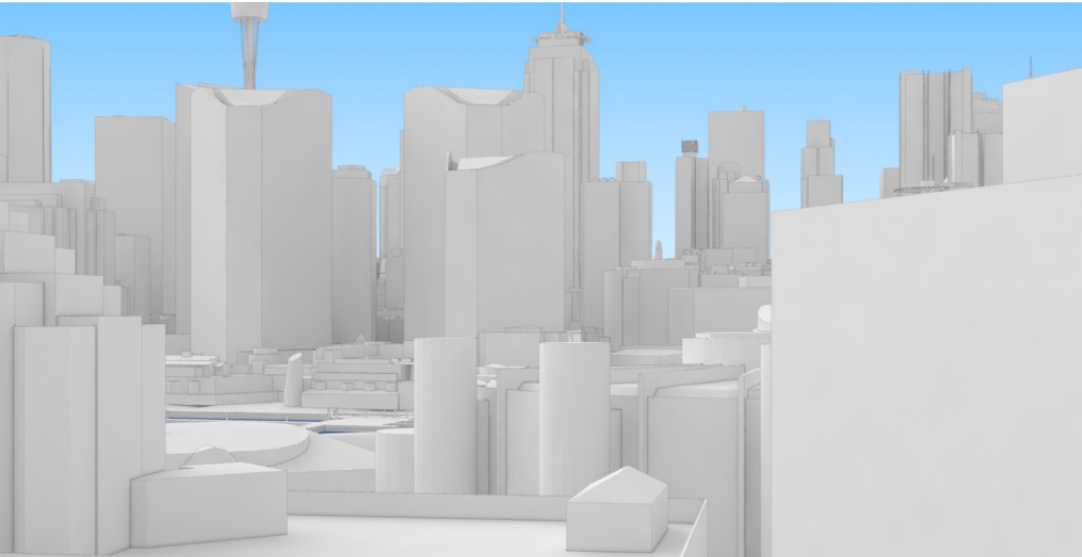
Level: 09

RL: 36.228 (Camera Height)

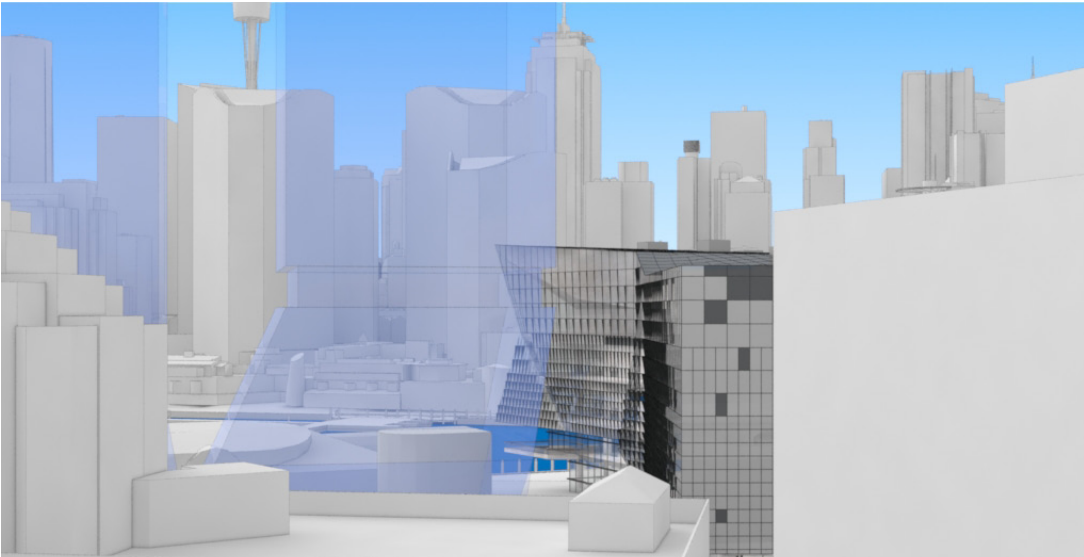
FOR INFORMATION ONLY

The Hotel shown in these images does not form part of this development application (and will be the subject of a separate development assessment process) and is included for information and broader illustrative purposes. Illustrative designs of built forms in the Haymarket precinct do not form part of this development application (and will be the subject of separate development assessment processes) and is shown for information and broader illustrative purposes. These images are produced here for view analysis purposes only.

- Key Building
- View Direction (50mm Camera)
- Hotel (subject of a future separate DA.)



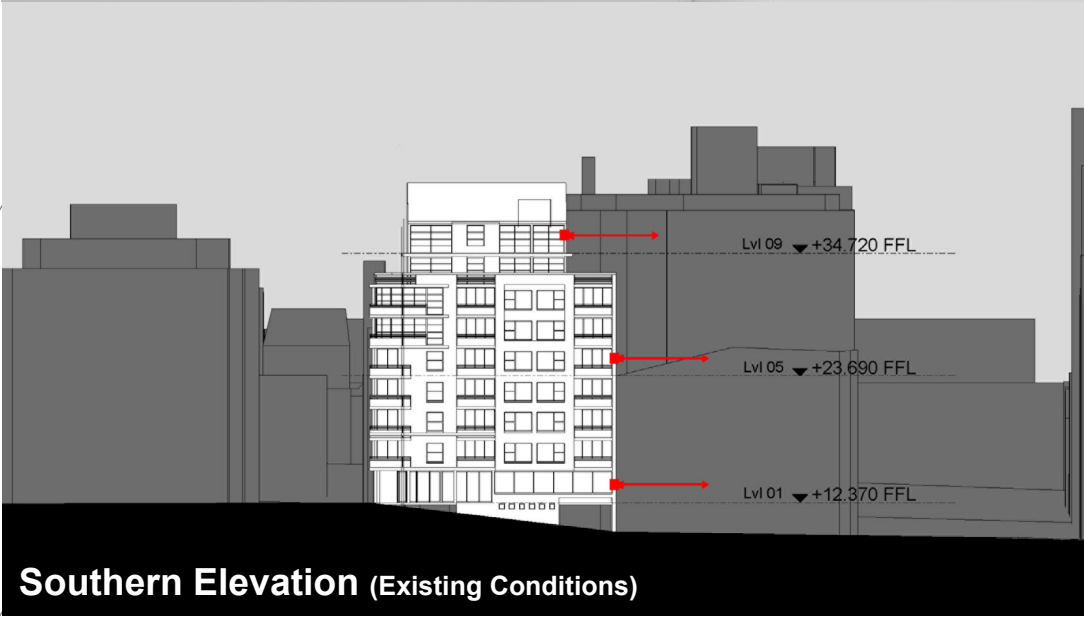
Existing View



Proposed View



Plan (Existing Conditions)



Southern Elevation (Existing Conditions)

# 18-20 Allen Street

Position: P1

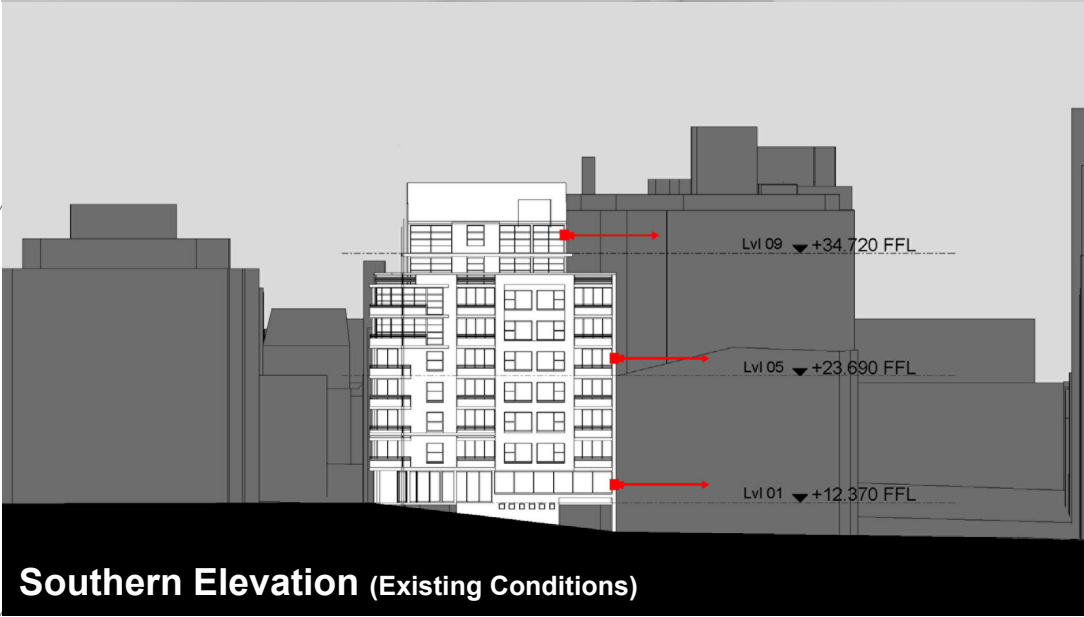
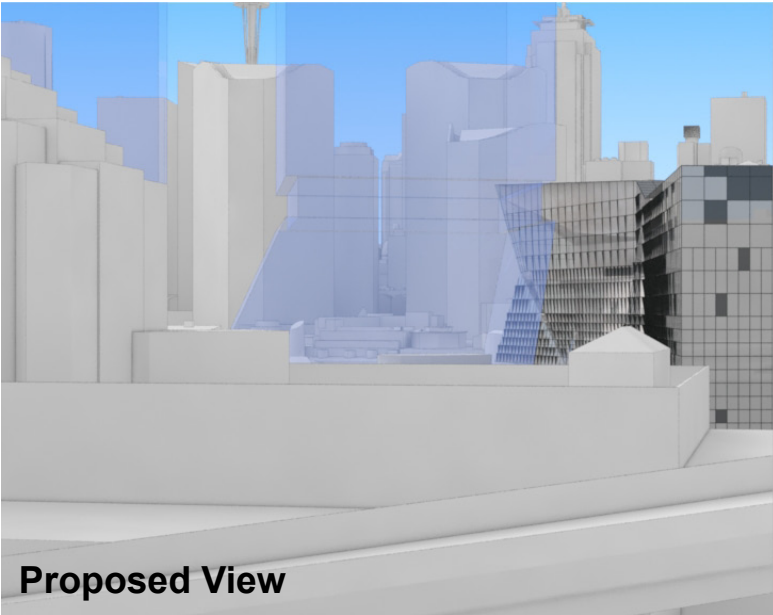
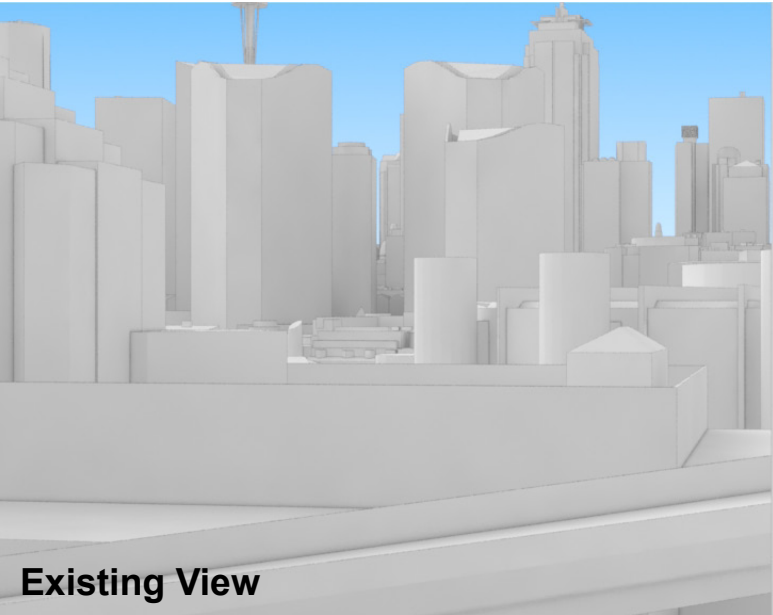
Level: 05

RL: 25.299 (Camera Height)

FOR INFORMATION ONLY

The Hotel shown in these images does not form part of this development application (and will be the subject of a separate development assessment process) and is included for information and broader illustrative purposes. Illustrative designs of built forms in the Haymarket precinct do not form part of this development application (and will be the subject of separate development assessment processes) and is shown for information and broader illustrative purposes. These images are produced here for view analysis purposes only.

- Key Building
- View Direction (50mm Camera)
- Hotel (subject of a future separate DA.)



# 18-20 Allen Street

Position: P1

Level: 01

RL: 13.970 (Camera Height)

FOR INFORMATION ONLY

The Hotel shown in these images does not form part of this development application (and will be the subject of a separate development assessment process) and is included for information and broader illustrative purposes. Illustrative designs of built forms in the Haymarket precinct do not form part of this development application (and will be the subject of separate development assessment processes) and is shown for information and broader illustrative purposes. These images are produced here for view analysis purposes only.

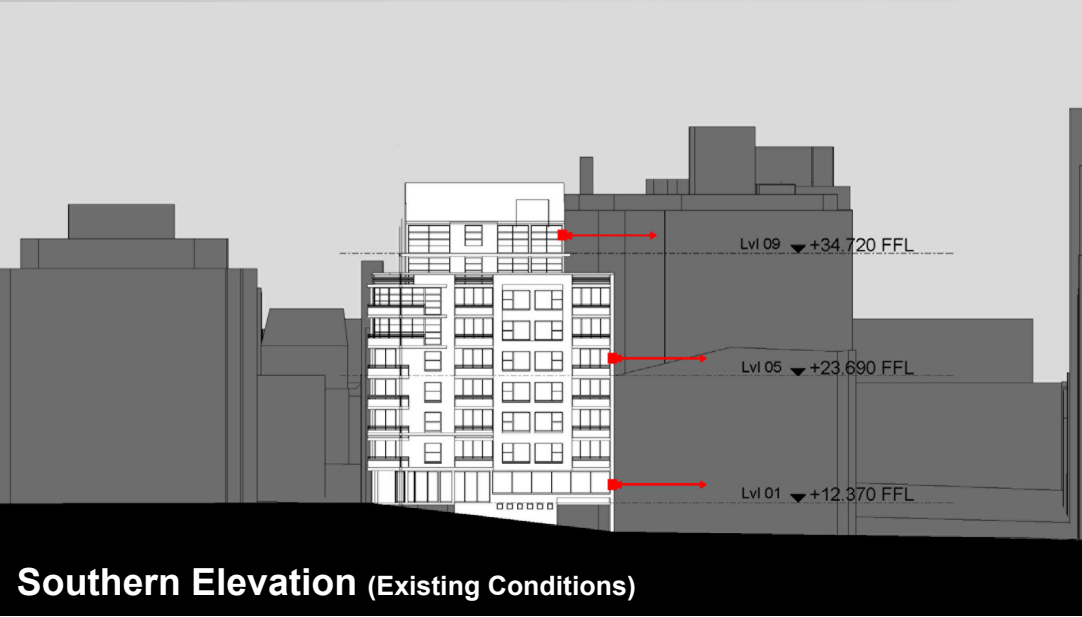
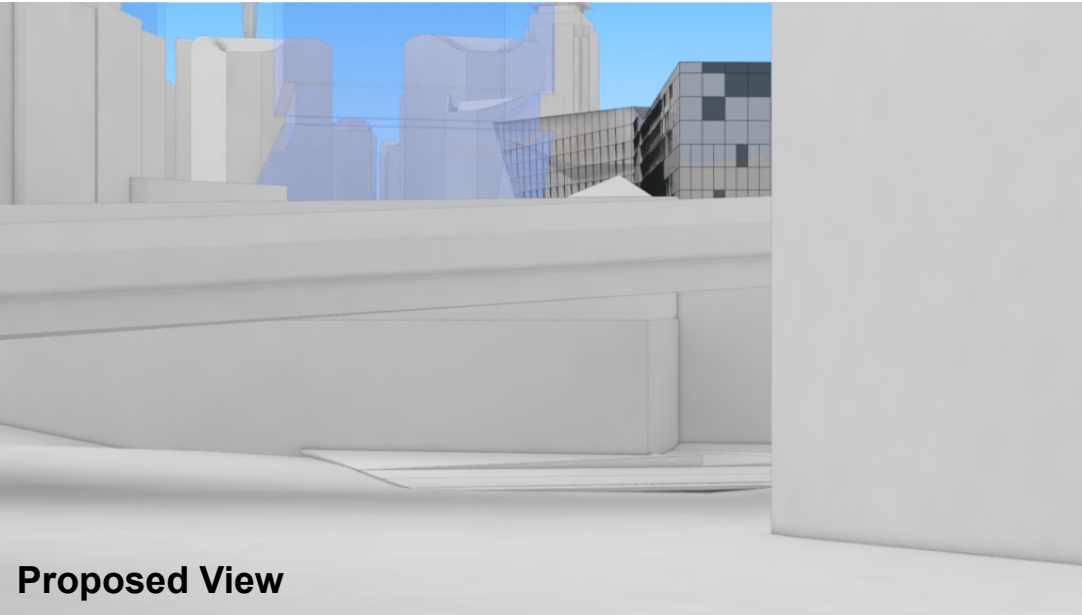
LEGEND:

23

Key Building

View Direction (50mm Camera)

Hotel (subject of a future separate DA.)



# 18-20 Allen Street

Position: P2

Level: 09

RL: 36.228 (Camera Height)

FOR INFORMATION ONLY

The Hotel shown in these images does not form part of this development application (and will be the subject of a separate development assessment process) and is included for information and broader illustrative purposes. Illustrative designs of built forms in the Haymarket precinct do not form part of this development application (and will be the subject of separate development assessment processes) and is shown for information and broader illustrative purposes. These images are produced here for view analysis purposes only.

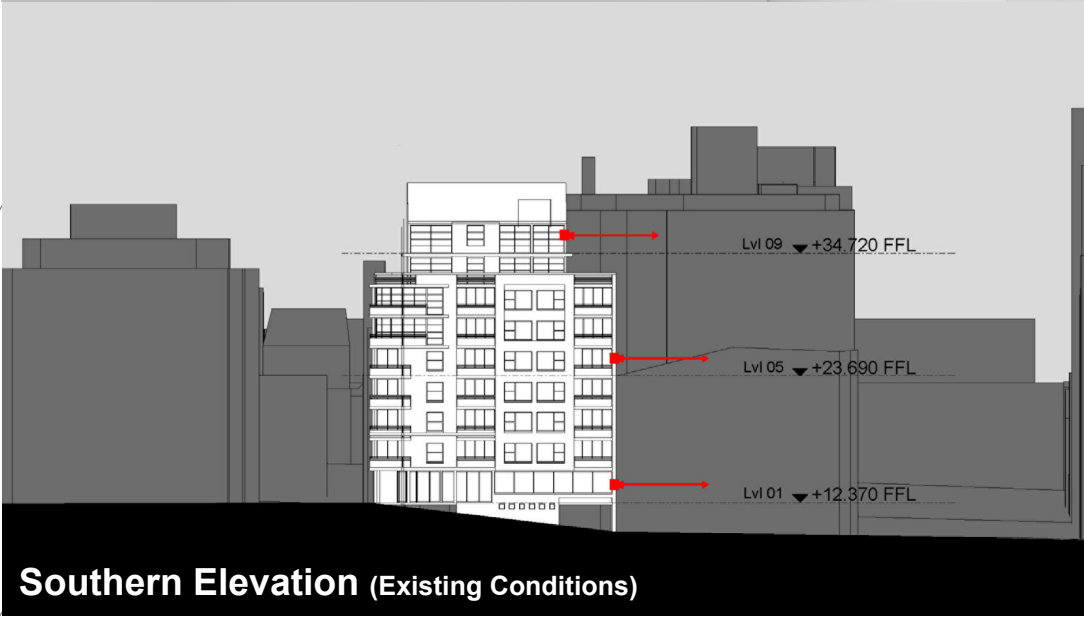
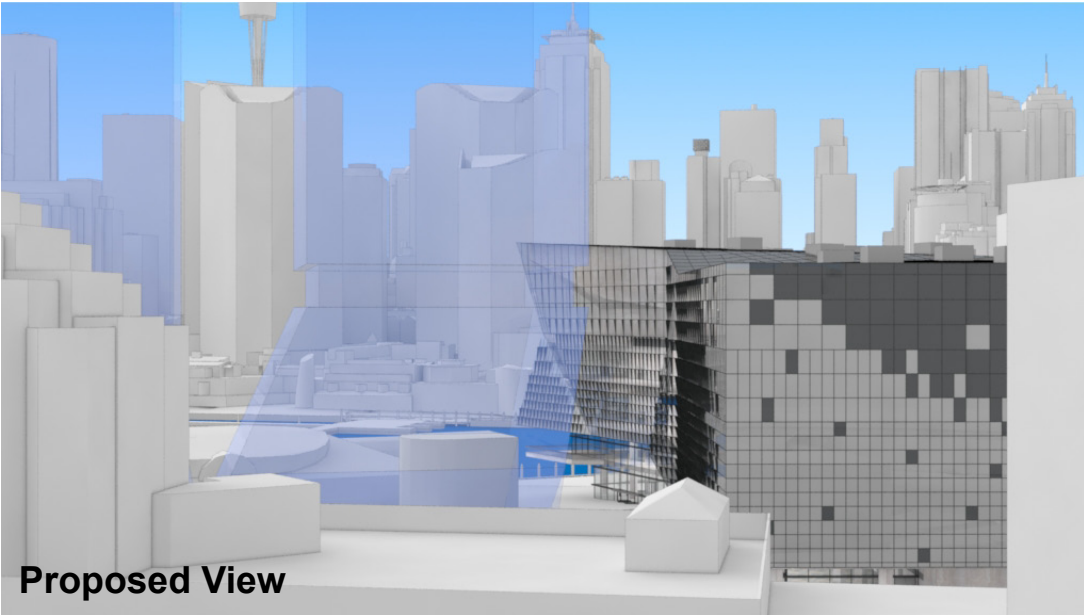
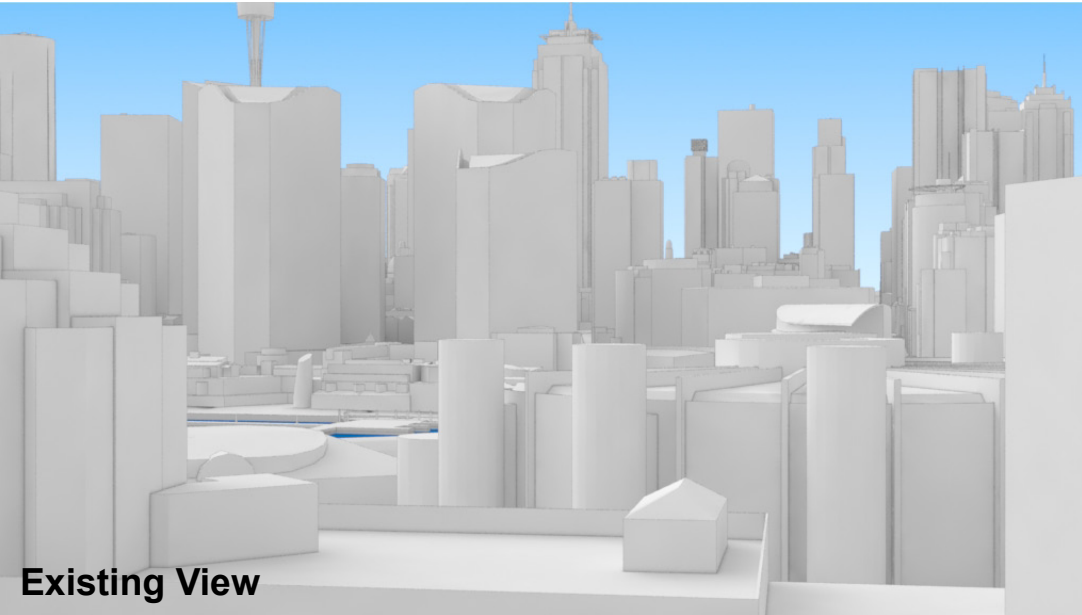
LEGEND:

24

Key Building

View Direction (50mm Camera)

Hotel (subject of a future separate DA.)



# 18-20 Allen Street

Position: P2

Level: 05

RL: 25.299 (Camera Height)

FOR INFORMATION ONLY

The Hotel shown in these images does not form part of this development application (and will be the subject of a separate development assessment process) and is included for information and broader illustrative purposes. Illustrative designs of built forms in the Haymarket precinct do not form part of this development application (and will be the subject of separate development assessment processes) and is shown for information and broader illustrative purposes. These images are produced here for view analysis purposes only.

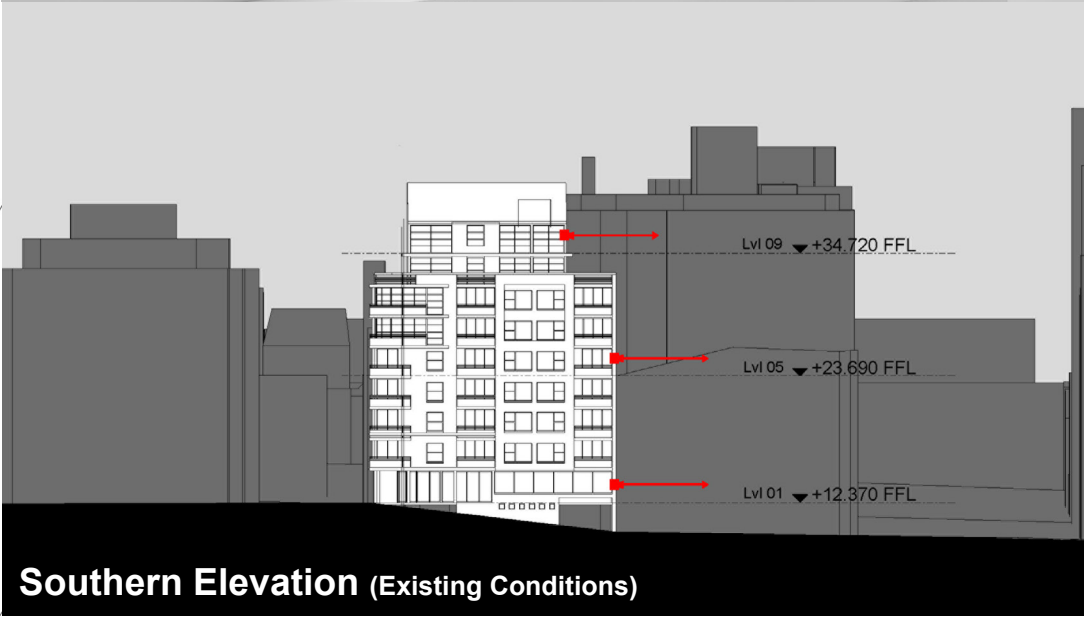
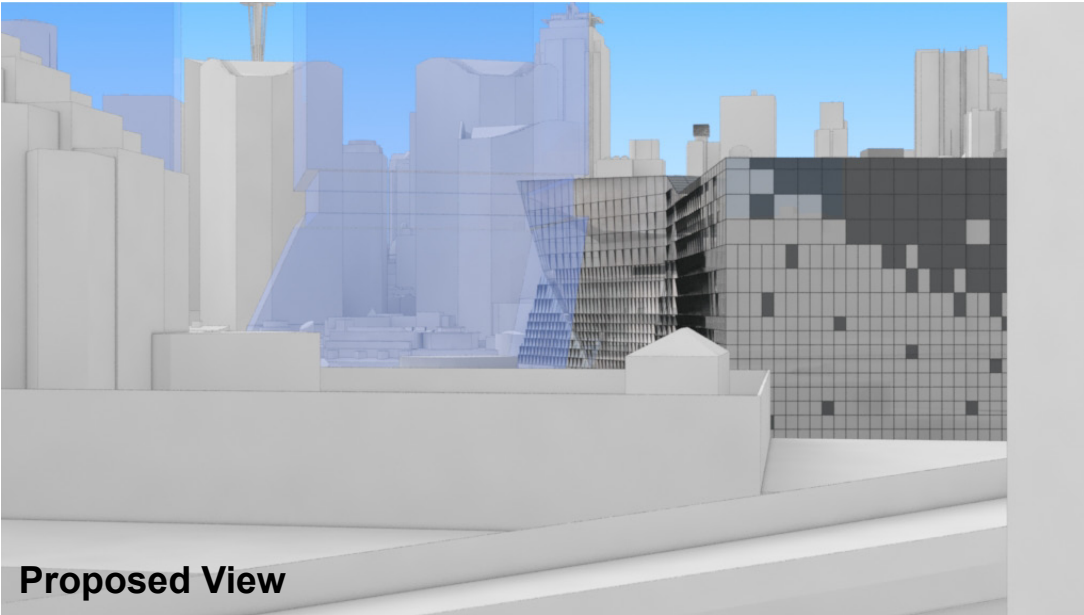
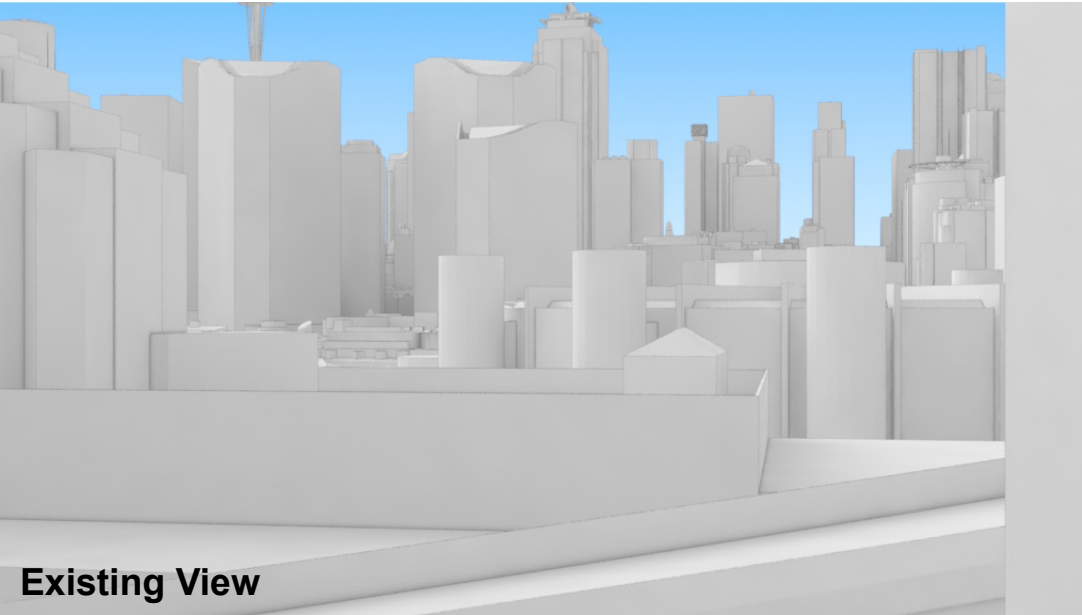
LEGEND:

25

Key Building

View Direction (50mm Camera)

Hotel (subject of a future separate DA.)



# 18-20 Allen Street

Position: P2

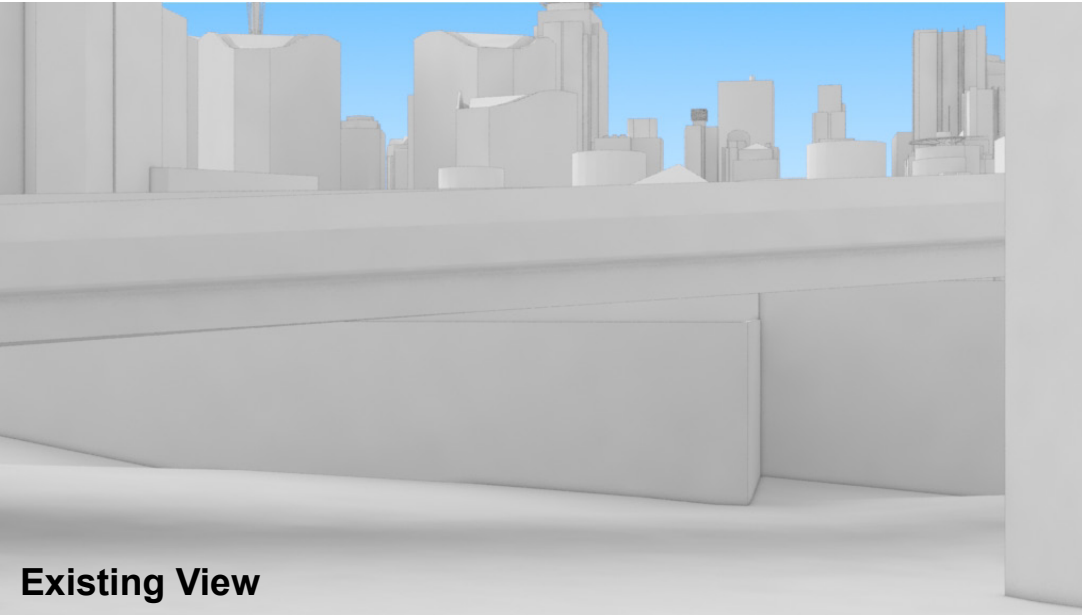
Level: 01

RL: 13.970 (Camera Height)

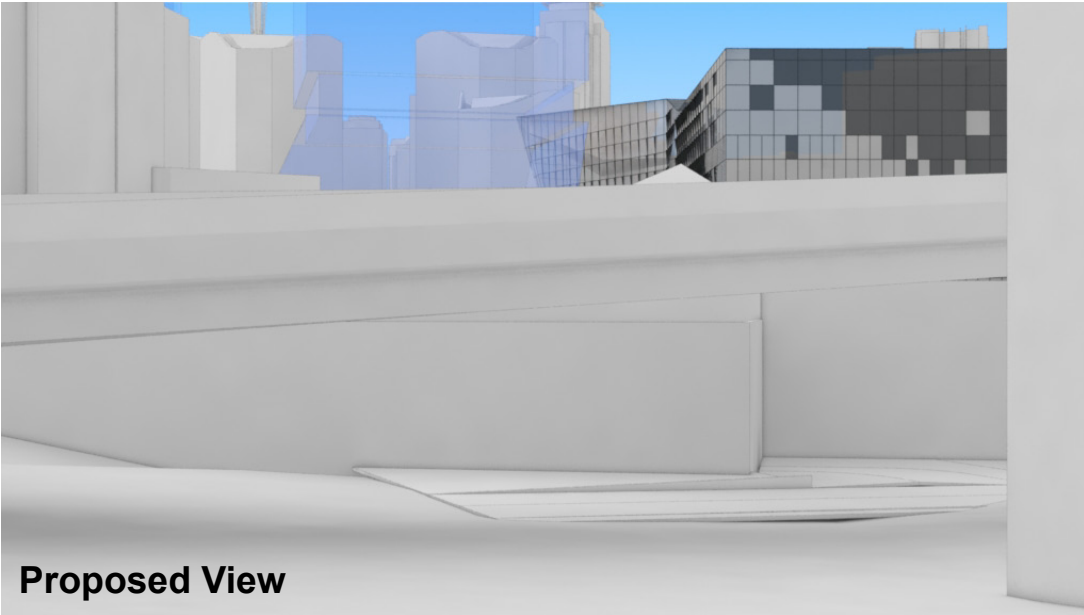
FOR INFORMATION ONLY

The Hotel shown in these images does not form part of this development application (and will be the subject of a separate development assessment process) and is included for information and broader illustrative purposes. Illustrative designs of built forms in the Haymarket precinct do not form part of this development application (and will be the subject of separate development assessment processes) and is shown for information and broader illustrative purposes. These images are produced here for view analysis purposes only.

- Key Building
- View Direction (50mm Camera)
- Hotel (subject of a future separate DA.)



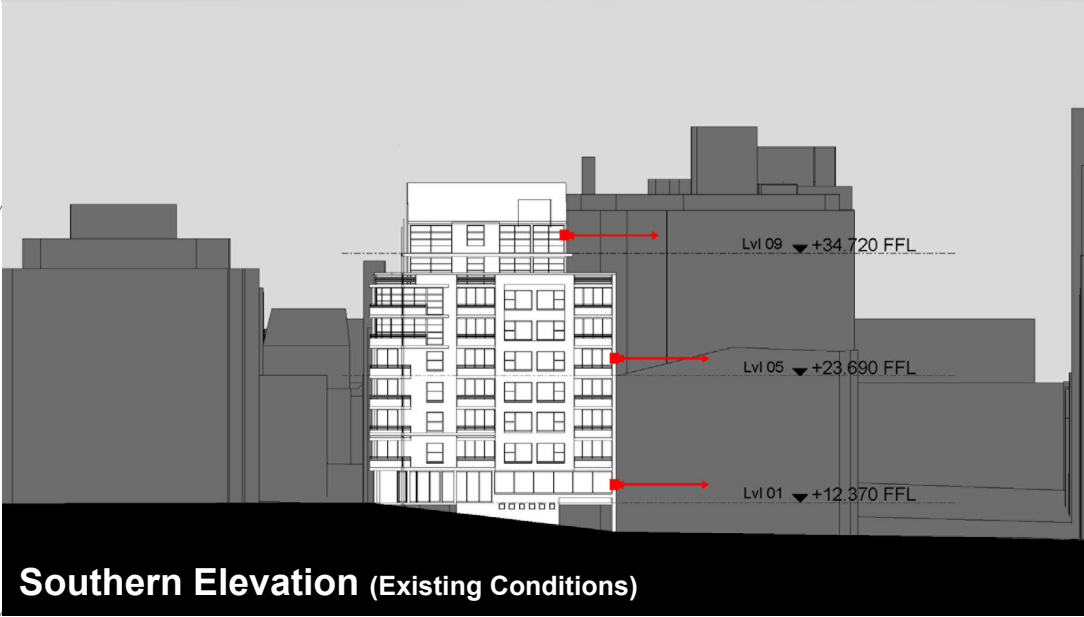
Existing View



Proposed View



Plan (Existing Conditions)



Southern Elevation (Existing Conditions)