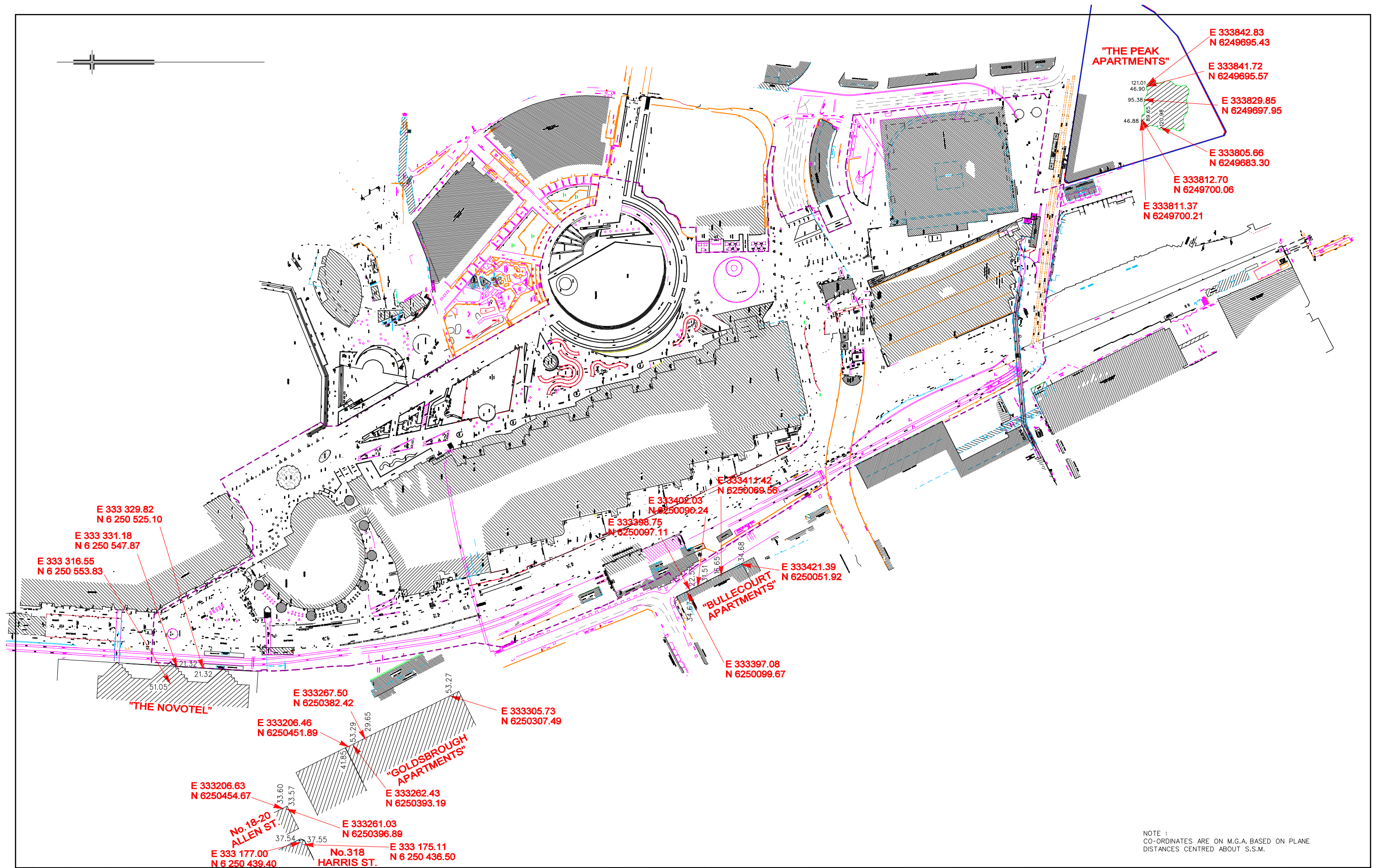




- 1 Novotel Sydney Darling Harbour
- 2 18-20 Allen Street
- 3 Darling Court
- 4 Oaks Goldsbrough Apartments
- 5 Bullecourt Apartments
- 6 The Peak Apartments
- 7 The Quay (Under Construction)




NOTE :
CO-ORDINATES ARE ON M.G.A. BASED ON PLANE
DISTANCES CENTRED ABOUT S.S.M.

REV.	DATE	AMENDMENTS
A	18/2/2013	HARRIS STREET PROPERTY AND NOVOTEL LOCATIONS ADDED

COPYRIGHT © RYGATE & COMPANY PTY. LIMITED 2013.
NO PART OF THIS PLAN MAY BE REPRODUCED, COMMUNICATED, STORED IN A RETRIEVAL SYSTEM OR TRANSMITTED IN ANY FORM WITHOUT THE WRITTEN PERMISSION OF THE COPYRIGHT OWNER EXCEPT AS PERMITTED BY THE COPYRIGHT ACT 1968. ANY PERMITTED DOWNLOADING, ELECTRONIC STORAGE, DISPLAY, PRINT, COPY, REPRODUCTION OR COMMUNICATION OF THIS SURVEY SHOULD CONTAIN NO ALTERATION OR ADDITION TO THE ORIGINAL SURVEY.

0 150
REDUCTION RATIO 1:3000 @ A3

DATUM : AUSTRALIAN HEIGHT DATUM
CONTOUR INTERVAL : N/A
ORIGIN OF LEVELS : P.M.55082
R.L.3.288 A.H.D.

 Rygate & Company Pty Limited P.W. Rygate & West ABN 61 001 204 897			
SURVEYING SINCE 1883			
SUBDIVISION STRATA PLANS STRATUM SUBDIVISION LEASE PLANS TOPOGRAPHIC SURVEYS GPS SURVEYS 3D MODELLING RACECOURSE DESIGN PROJECT MANAGEMENT SUN SHADOW DIAGRAMS			
SURVEYOR	DRAWN	CHECKED	APPROVED
-	-	-	-

CLIENT	LEND LEASE
LOCALITY	DARLING HARBOUR
L.G.A.	SYDNEY

PLAN			
SHOWING CO-ORDINATES OF CAMERA LOCATIONS ADJOINING SICEEP SITE			
REFERENCE No.	PLAN No.	DATE	SHEET No. 1
75706		8/2/2013	OF SHEETS

Appendix 4

TAB 1 – NOVOTEL

Novotel Sydney Darling Harbour

Position: P1A

Level: 08

RL: 42.250 (Camera Height)

FOR INFORMATION ONLY

The Hotel shown in these images does not form part of this development application (and will be the subject of a separate development assessment process) and is included for information and broader illustrative purposes. Illustrative designs of built forms in the Haymarket precinct do not form part of this development application (and will be the subject of separate development assessment processes) and is shown for information and broader illustrative purposes. These images are produced here for view analysis purposes only.

LEGEND:

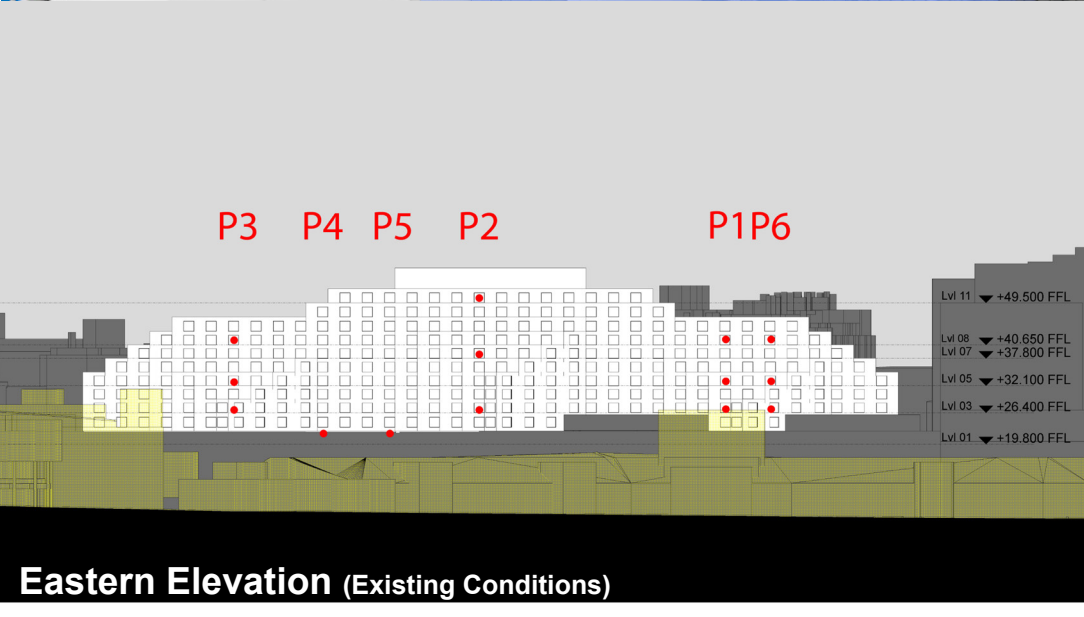
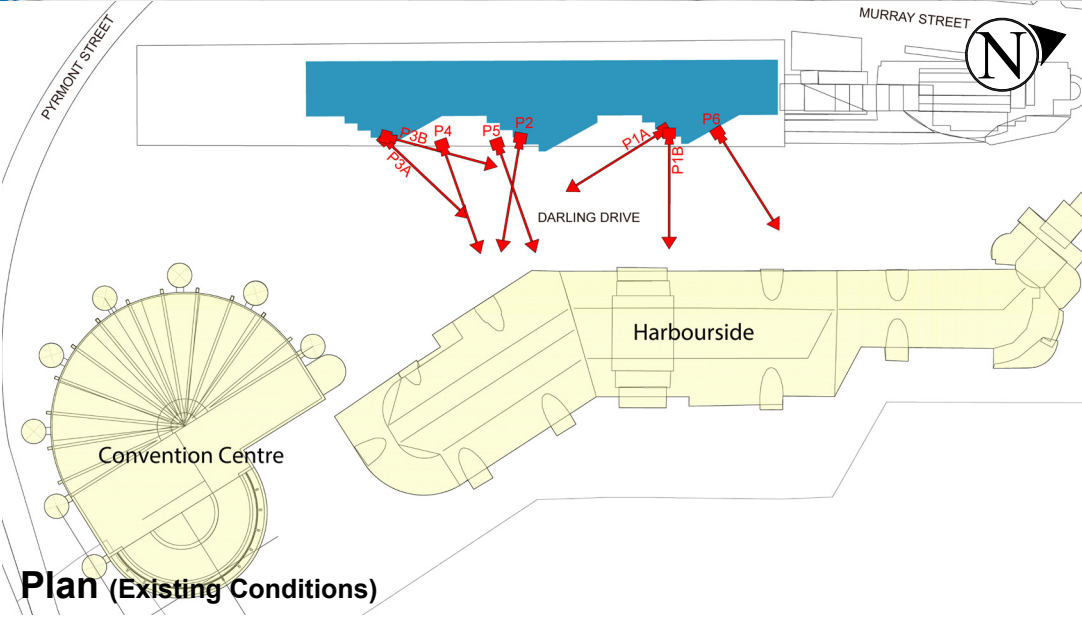
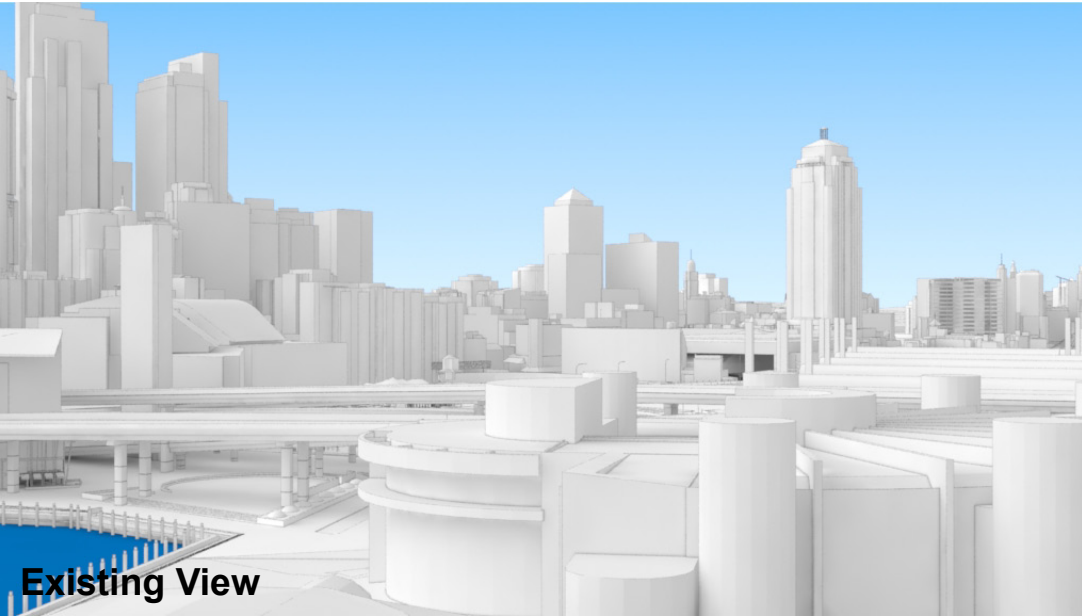
Key Building

Neighbouring Buildings

View Direction (50mm Camera)

Camera Position

Hotel (subject of a future separate DA.)



Novotel Sydney Darling Harbour

Position: P1A

Level: 05

RL: 33.700 (Camera Height)

FOR INFORMATION ONLY

The Hotel shown in these images does not form part of this development application (and will be the subject of a separate development assessment process) and is included for information and broader illustrative purposes. Illustrative designs of built forms in the Haymarket precinct do not form part of this development application (and will be the subject of separate development assessment processes) and is shown for information and broader illustrative purposes. These images are produced here for view analysis purposes only.

LEGEND:

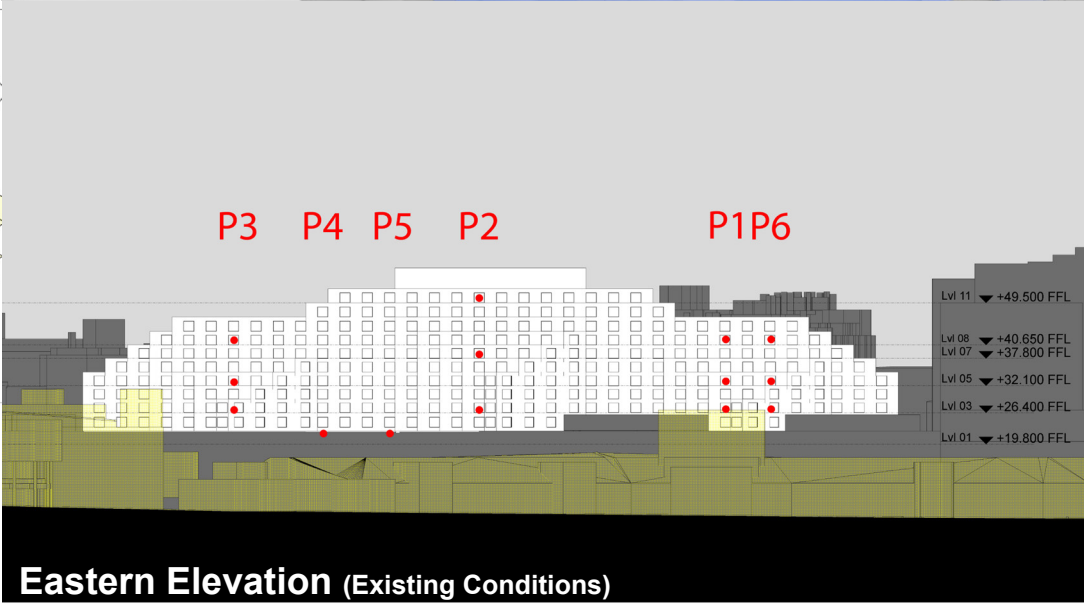
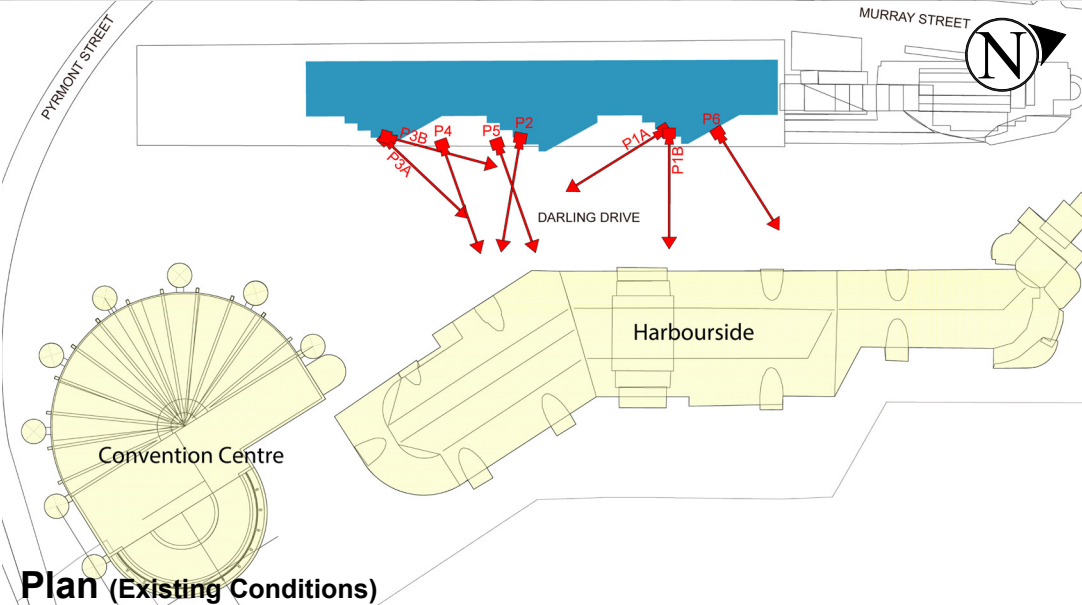
Key Building

Neighbouring Buildings

View Direction (50mm Camera)

Camera Position

Hotel (subject of a future separate DA.)



Novotel Sydney Darling Harbour

Position: P1A

Level: 03

RL: 28.00 (Camera Height)

FOR INFORMATION ONLY

The Hotel shown in these images does not form part of this development application (and will be the subject of a separate development assessment process) and is included for information and broader illustrative purposes. Illustrative designs of built forms in the Haymarket precinct do not form part of this development application (and will be the subject of separate development assessment processes) and is shown for information and broader illustrative purposes. These images are produced here for view analysis purposes only.

LEGEND:

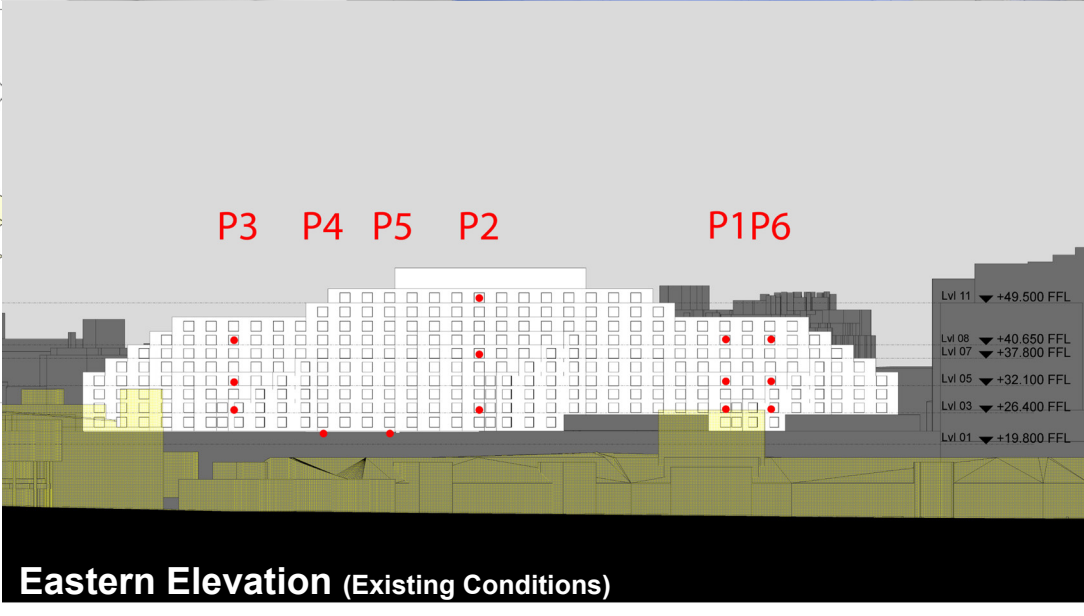
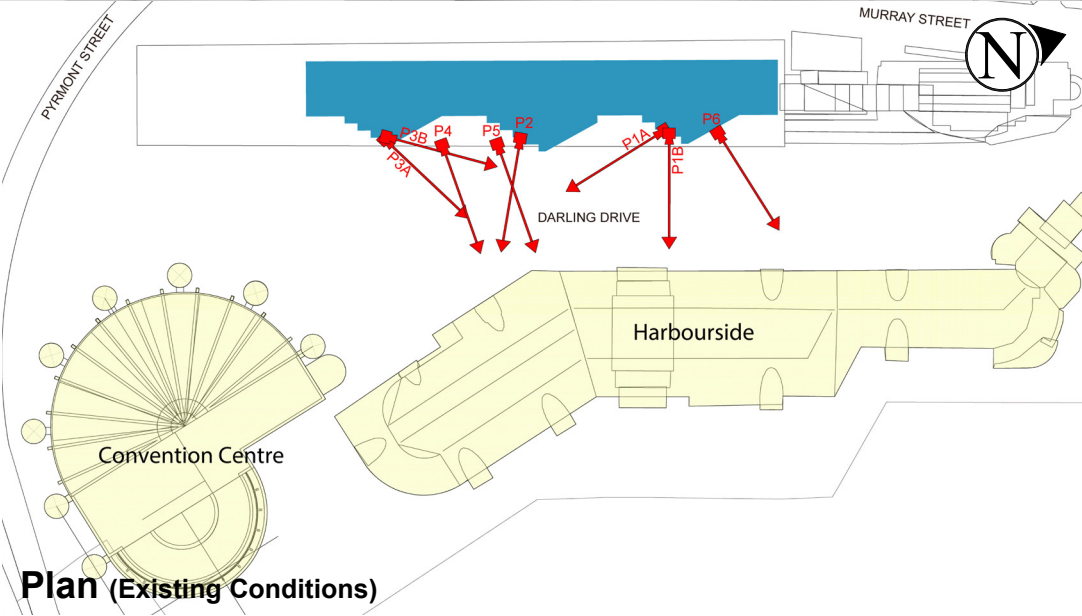
Key Building

Neighbouring Buildings

View Direction (50mm Camera)

Camera Position

Hotel (subject of a future separate DA.)



Novotel Sydney Darling Harbour

Position: P1B

Level: 08

RL: 42.250 (Camera Height)

FOR INFORMATION ONLY

The Hotel shown in these images does not form part of this development application (and will be the subject of a separate development assessment process) and is included for information and broader illustrative purposes. Illustrative designs of built forms in the Haymarket precinct do not form part of this development application (and will be the subject of separate development assessment processes) and is shown for information and broader illustrative purposes. These images are produced here for view analysis purposes only.

LEGEND:

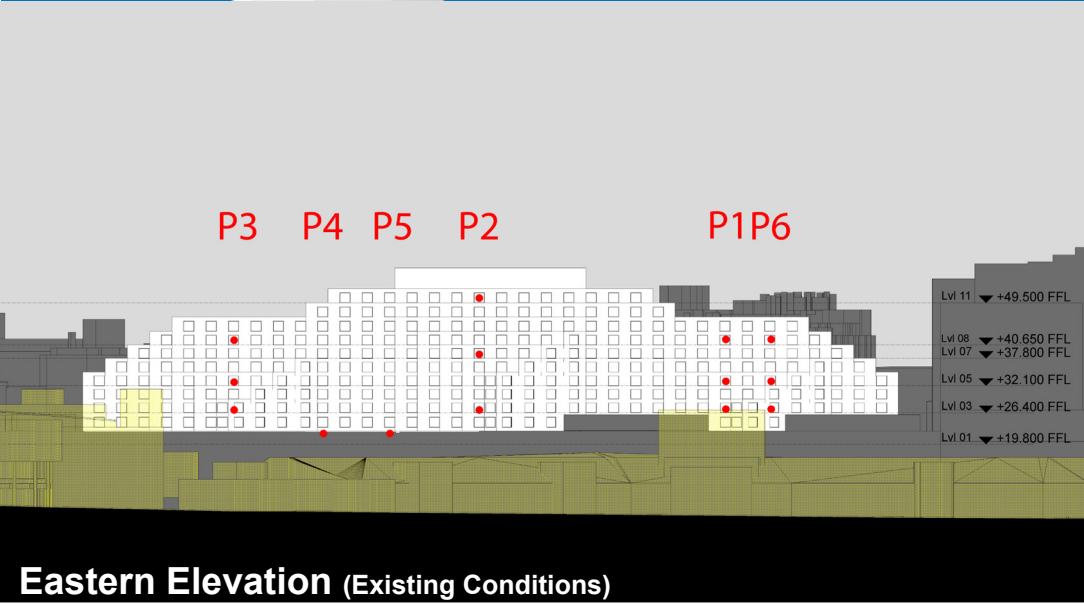
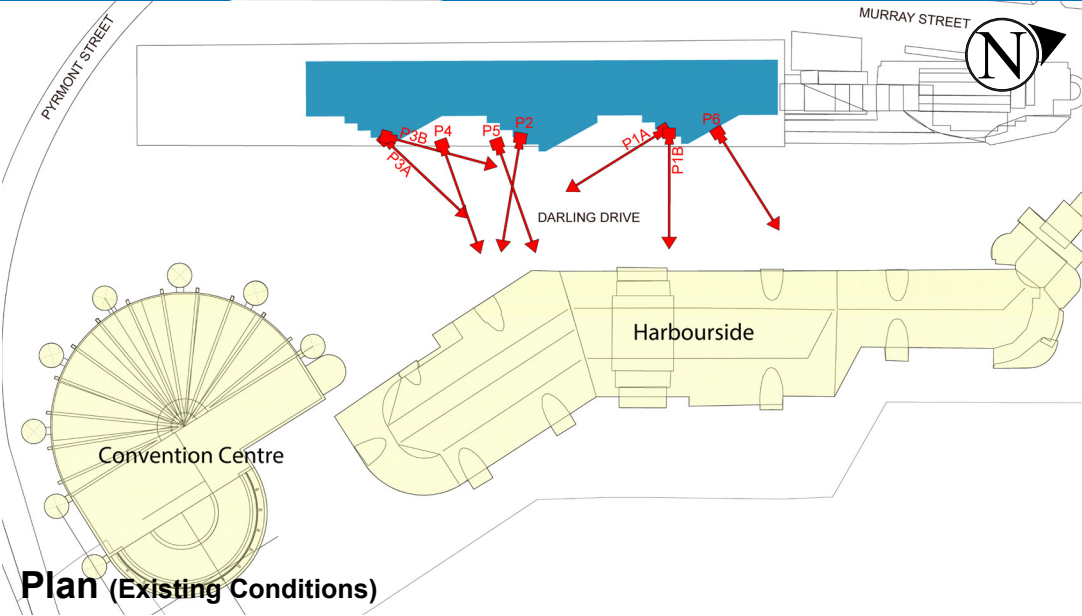
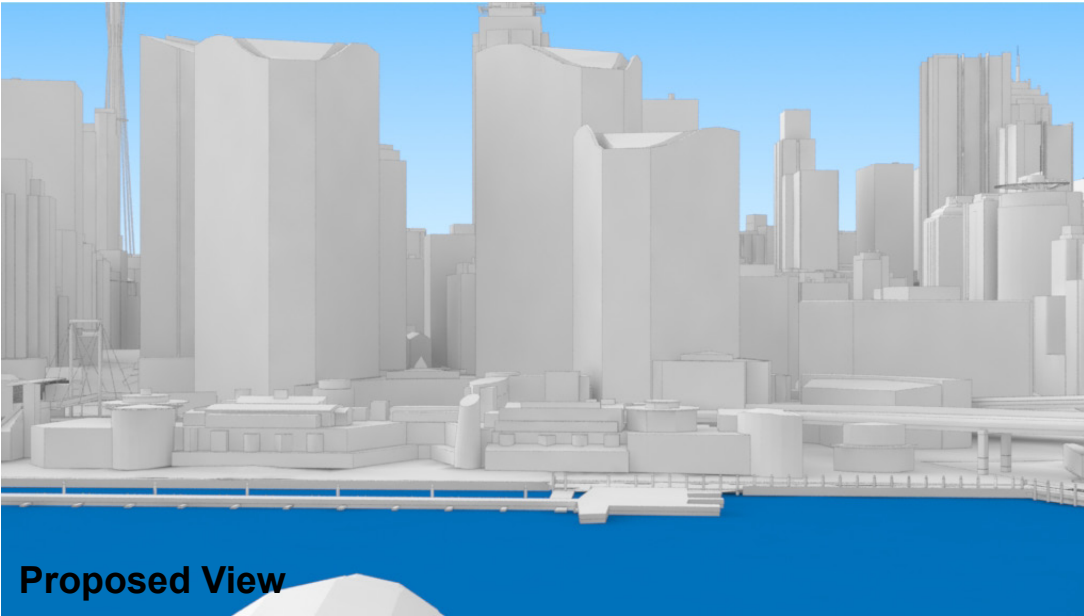
Key Building

Neighbouring Buildings

View Direction (50mm Camera)

Camera Position

Hotel (subject of a future separate DA.)



Novotel Sydney Darling Harbour

Position: P2

Level: 11

RL: 51.10 (Camera Height)

FOR INFORMATION ONLY

The Hotel shown in these images does not form part of this development application (and will be the subject of a separate development assessment process) and is included for information and broader illustrative purposes. Illustrative designs of built forms in the Haymarket precinct do not form part of this development application (and will be the subject of separate development assessment processes) and is shown for information and broader illustrative purposes. These images are produced here for view analysis purposes only.

LEGEND:

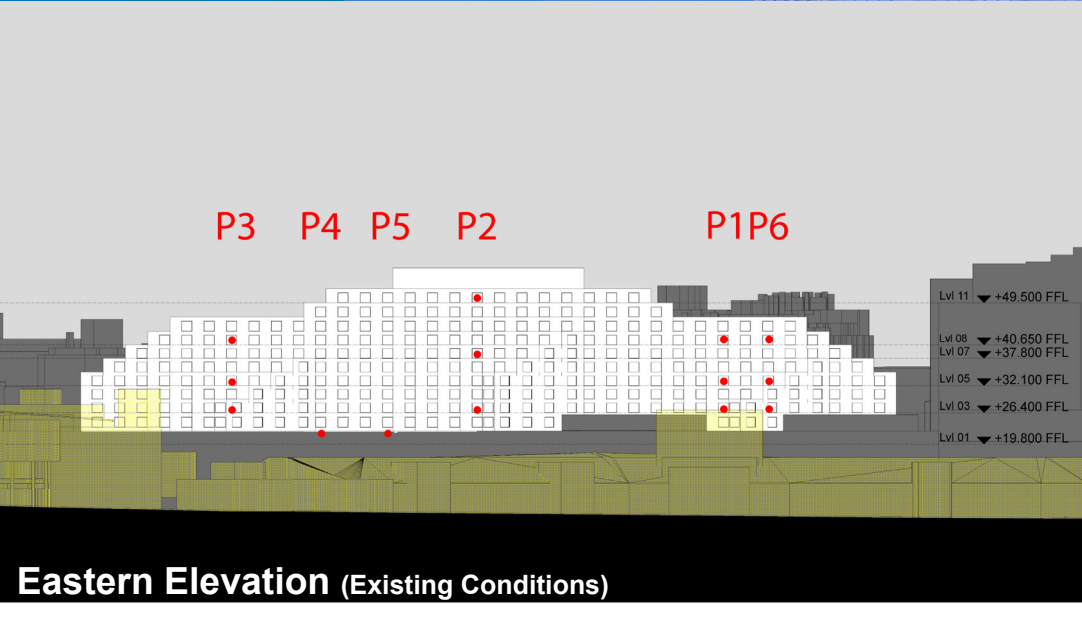
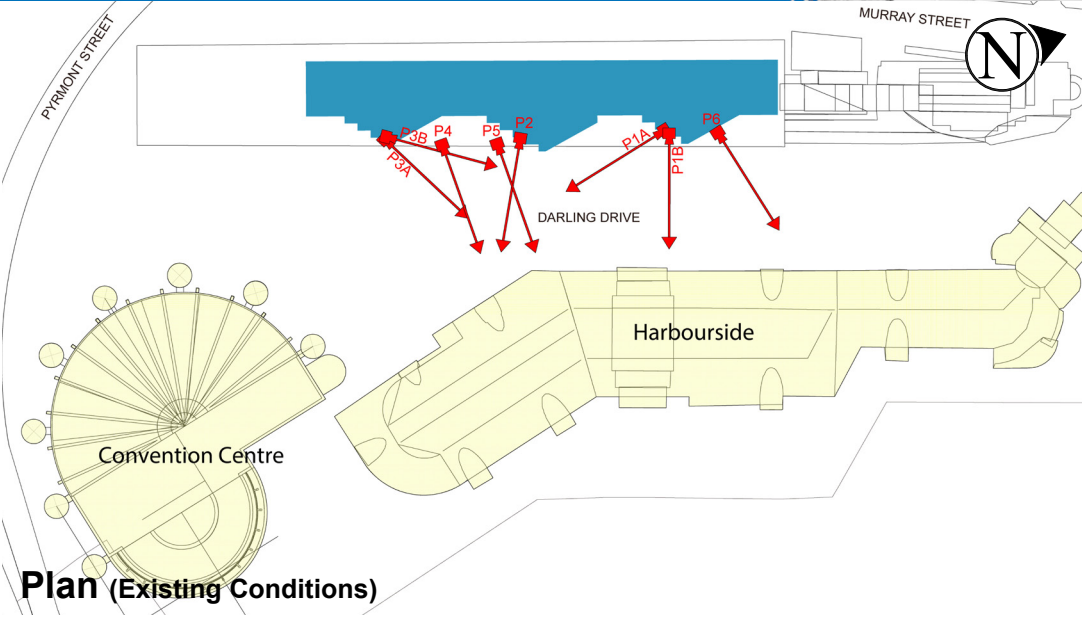
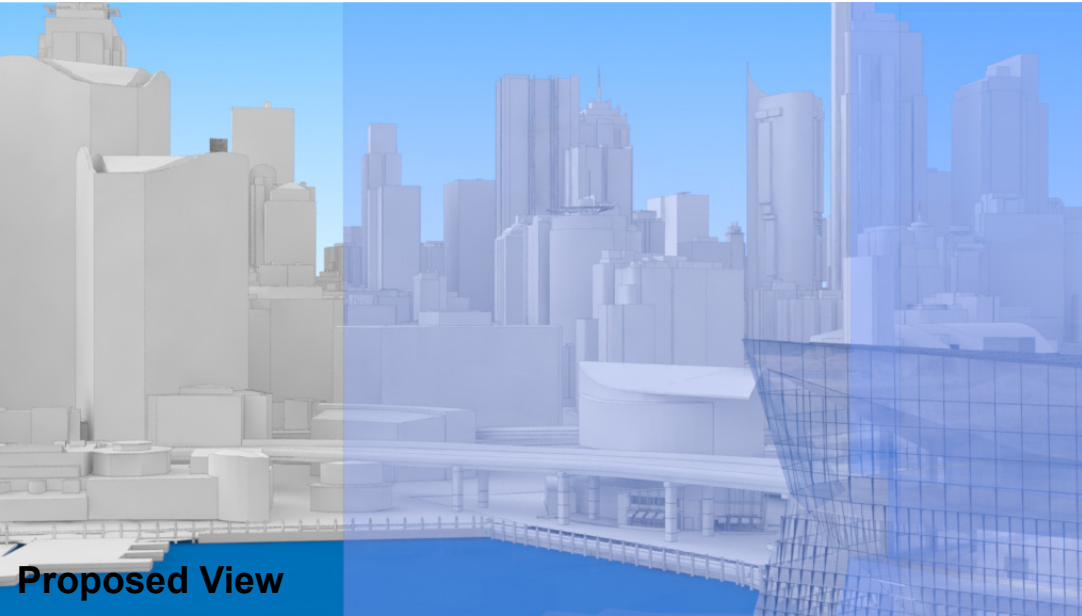
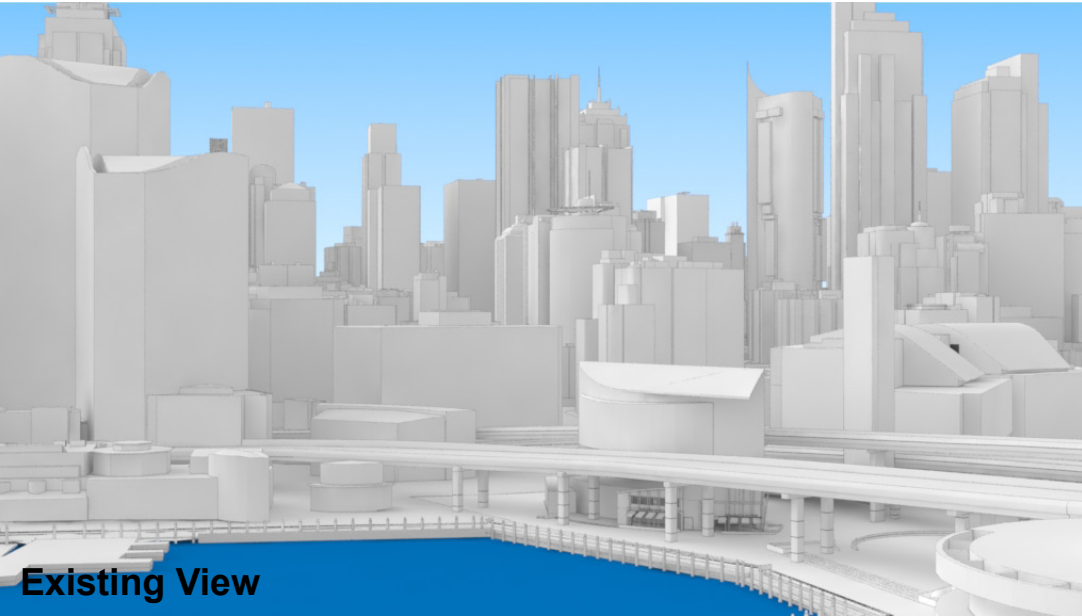
Key Building

Neighbouring Buildings

View Direction (50mm Camera)

Camera Position

Hotel (subject of a future separate DA.)



Novotel Sydney Darling Harbour

Position: P2

Level: 07

RL: 39.400 (Camera Height)

FOR INFORMATION ONLY

The Hotel shown in these images does not form part of this development application (and will be the subject of a separate development assessment process) and is included for information and broader illustrative purposes. Illustrative designs of built forms in the Haymarket precinct do not form part of this development application (and will be the subject of separate development assessment processes) and is shown for information and broader illustrative purposes. These images are produced here for view analysis purposes only.

LEGEND:

8

Key Building

Neighbouring Buildings

View Direction (50mm Camera)

Camera Position

Hotel (subject of a future separate DA.)

A 3D perspective rendering showing the existing view from camera position P2. The view is directed towards the Sydney Harbour Bridge and the city skyline across the water. The water is blue, and the sky is clear blue. The buildings are rendered in a light grey/white color.

A 3D perspective rendering showing the proposed view from camera position P2. The view is directed towards the Sydney Harbour Bridge and the city skyline across the water. The water is blue, and the sky is clear blue. The buildings are rendered in a light grey/white color. A semi-transparent blue rectangular area is overlaid on the right side of the image, indicating the proposed hotel building.

A plan view map of the area around the Convention Centre and Harbourside. The map shows the location of camera positions P1, P2, P3, P4, P5, P6, P7A, P7B, P8, P9A, P9B, and P9C. The Convention Centre is shown as a large circular building. Harbourside is shown as a long, narrow building. The map also shows the location of the Convention Centre, Harbourside, and the surrounding streets (Pymont Street, Murray Street, Darling Drive). A north arrow is present.

An elevation view of the building from the east. The building is shown with its existing conditions. The elevation shows the building's height and the location of camera positions P1, P2, P3, P4, P5, P6, P7A, P7B, P8, P9A, P9B, and P9C. The building is shown with its existing conditions. The elevation shows the building's height and the location of camera positions P1, P2, P3, P4, P5, P6, P7A, P7B, P8, P9A, P9B, and P9C. The building is shown with its existing conditions. The elevation shows the building's height and the location of camera positions P1, P2, P3, P4, P5, P6, P7A, P7B, P8, P9A, P9B, and P9C.

Novotel Sydney Darling Harbour

Position: P2

Level: 03

RL: 28.000 (Camera Height)

FOR INFORMATION ONLY

The Hotel shown in these images does not form part of this development application (and will be the subject of a separate development assessment process) and is included for information and broader illustrative purposes. Illustrative designs of built forms in the Haymarket precinct do not form part of this development application (and will be the subject of separate development assessment processes) and is shown for information and broader illustrative purposes. These images are produced here for view analysis purposes only.

LEGEND:

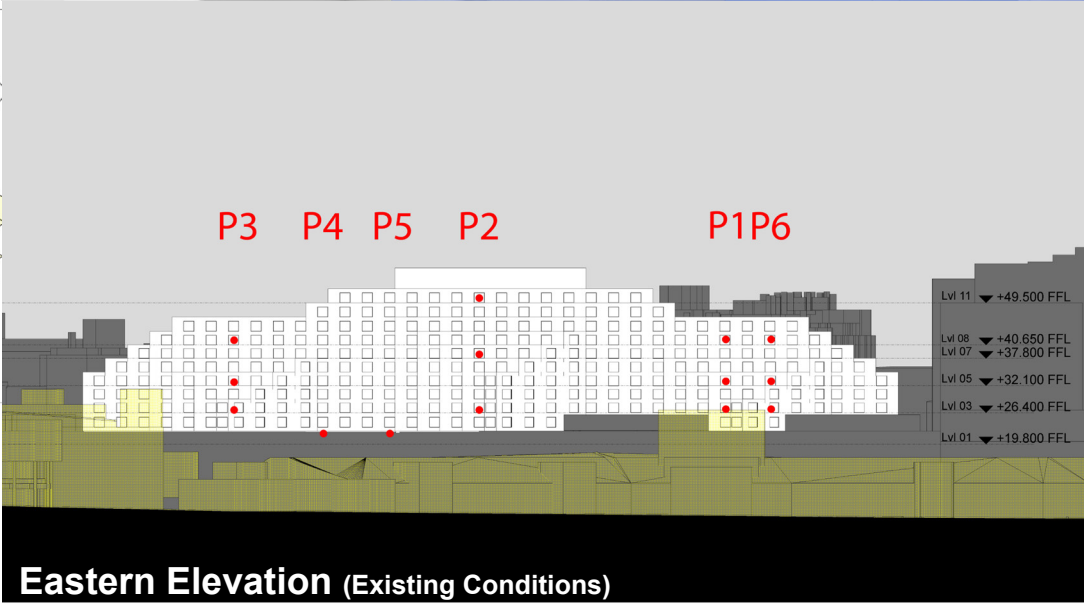
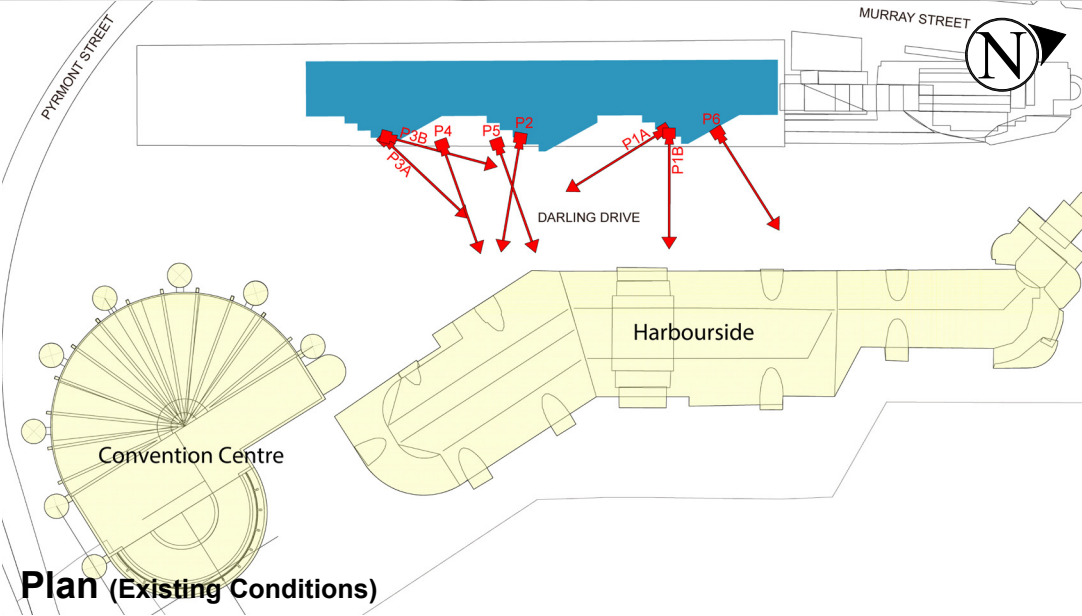
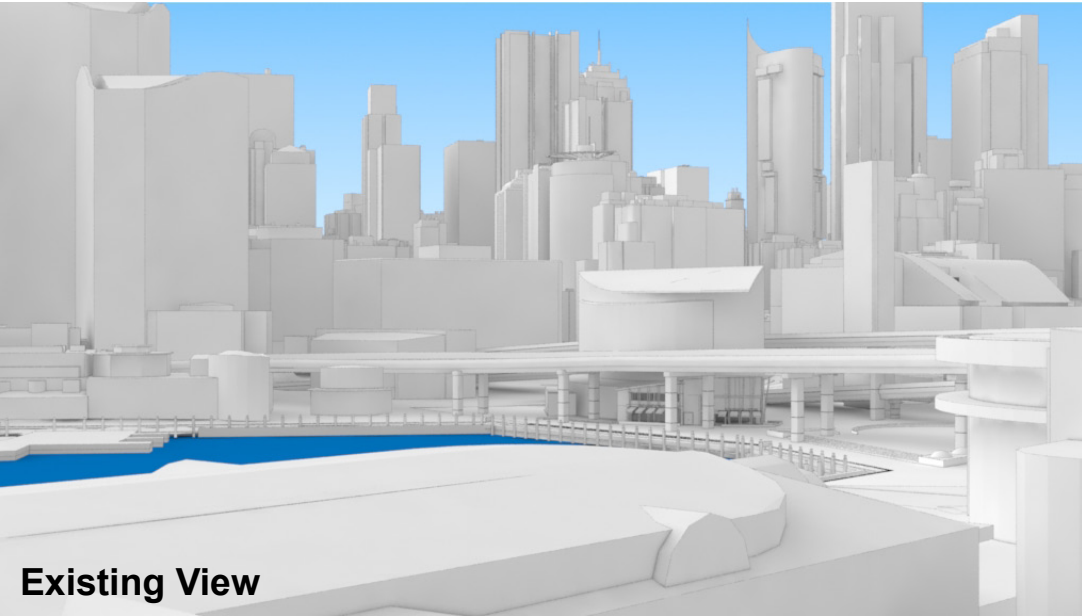
Key Building

Neighbouring Buildings

View Direction (50mm Camera)

Camera Position

Hotel (subject of a future separate DA.)



Novotel Sydney Darling Harbour

Position: P3A

Level: 08

RL: 42.250 (Camera Height)

FOR INFORMATION ONLY

The Hotel shown in these images does not form part of this development application (and will be the subject of a separate development assessment process) and is included for information and broader illustrative purposes. Illustrative designs of built forms in the Haymarket precinct do not form part of this development application (and will be the subject of separate development assessment processes) and is shown for information and broader illustrative purposes. These images are produced here for view analysis purposes only.

LEGEND:

10

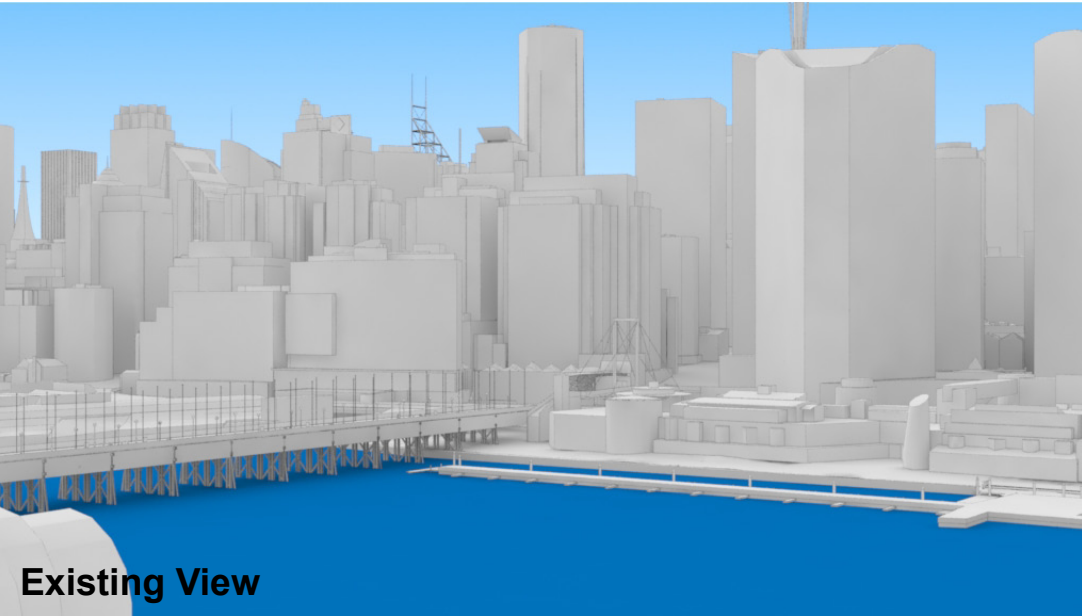
Key Building

Neighbouring Buildings

View Direction (50mm Camera)

Camera Position

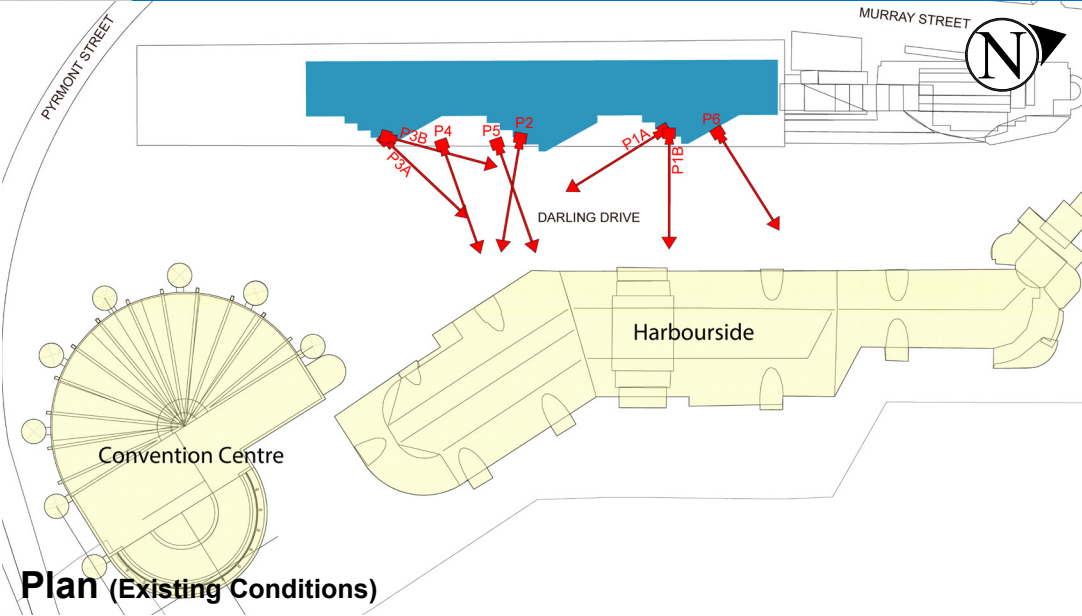
Hotel (subject of a future separate DA.)



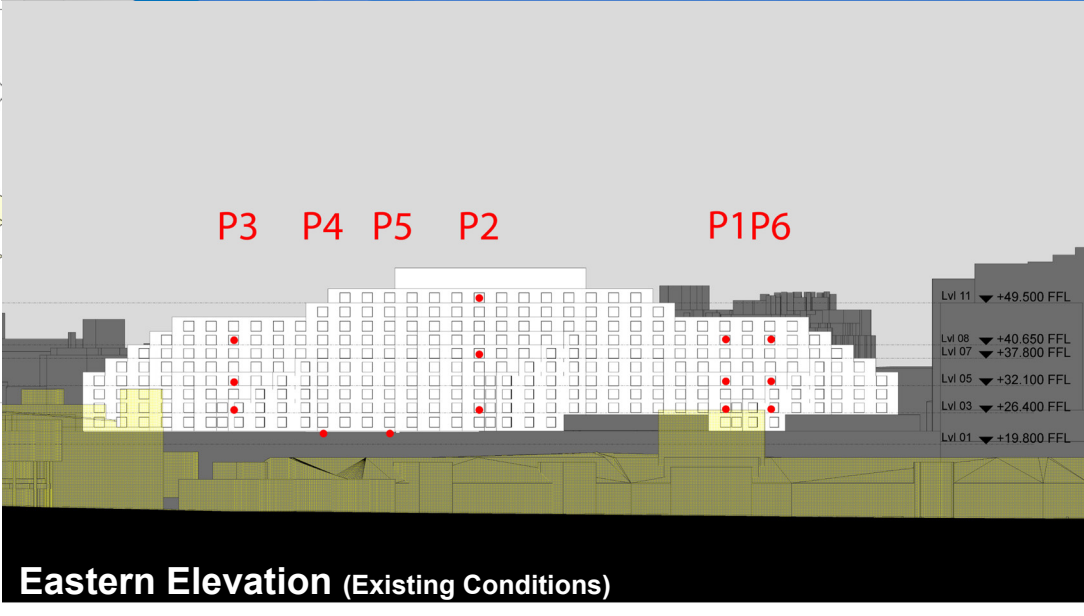
Existing View



Proposed View



Plan (Existing Conditions)



Eastern Elevation (Existing Conditions)

Novotel Sydney Darling Harbour

Position: P3A

Level: 05

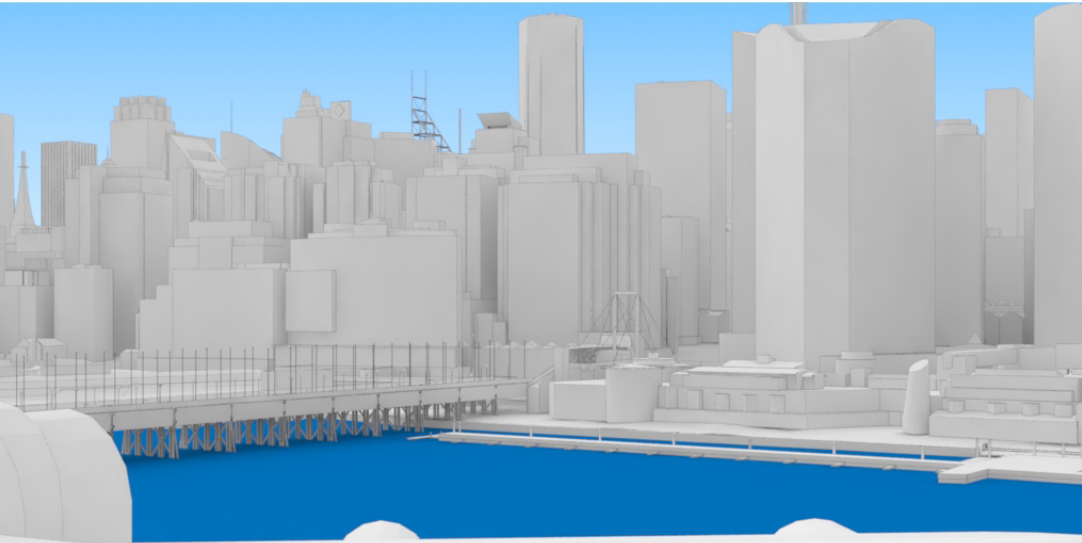
RL: 33.700 (Camera Height)

FOR INFORMATION ONLY

The Hotel shown in these images does not form part of this development application (and will be the subject of a separate development assessment process) and is included for information and broader illustrative purposes. Illustrative designs of built forms in the Haymarket precinct do not form part of this development application (and will be the subject of separate development assessment processes) and is shown for information and broader illustrative purposes. These images are produced here for view analysis purposes only.

LEGEND: 11

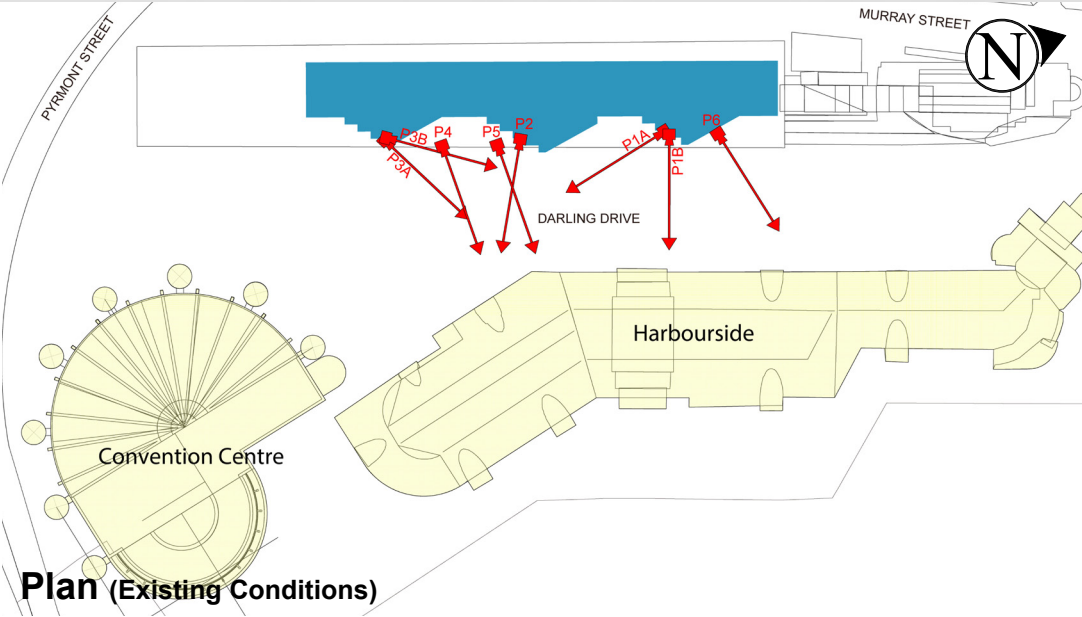
- Key Building
- Neighbouring Buildings
- View Direction (50mm Camera)
- Camera Position
- Hotel (subject of a future separate DA.)



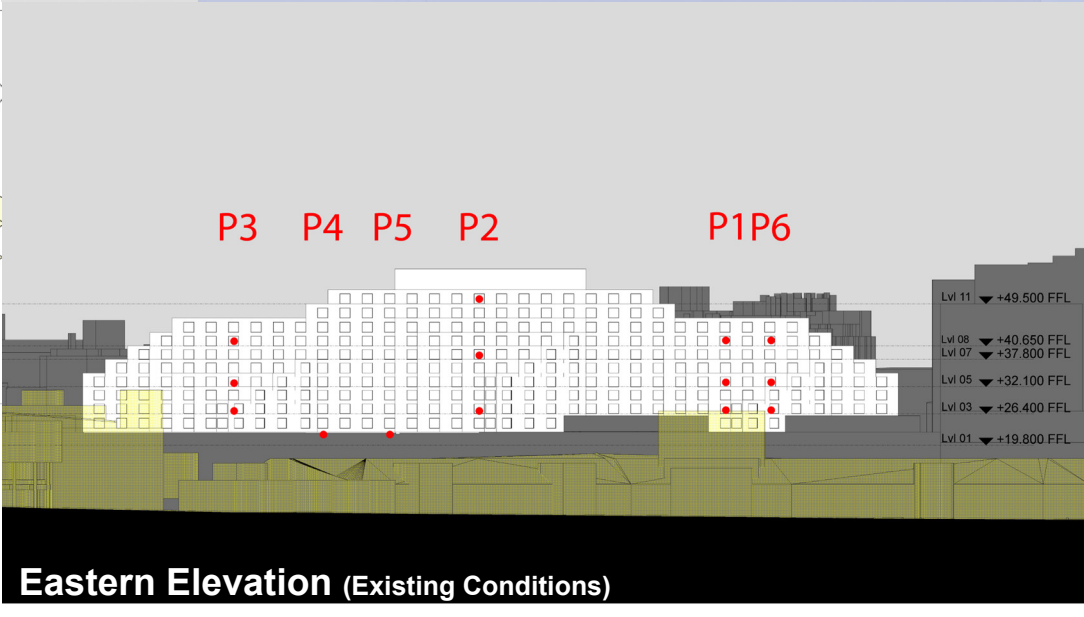
Existing View



Proposed View



Plan (Existing Conditions)



Eastern Elevation (Existing Conditions)