

Peak Apartments

Position: P1C

Level: 30

RL: 98.225 (Camera Height)

FOR INFORMATION ONLY

Illustrative designs of built forms in the Haymarket precinct do not form part of this development application (and will be the subject of separate development assessment processes) and is shown for information and broader illustrative purposes.

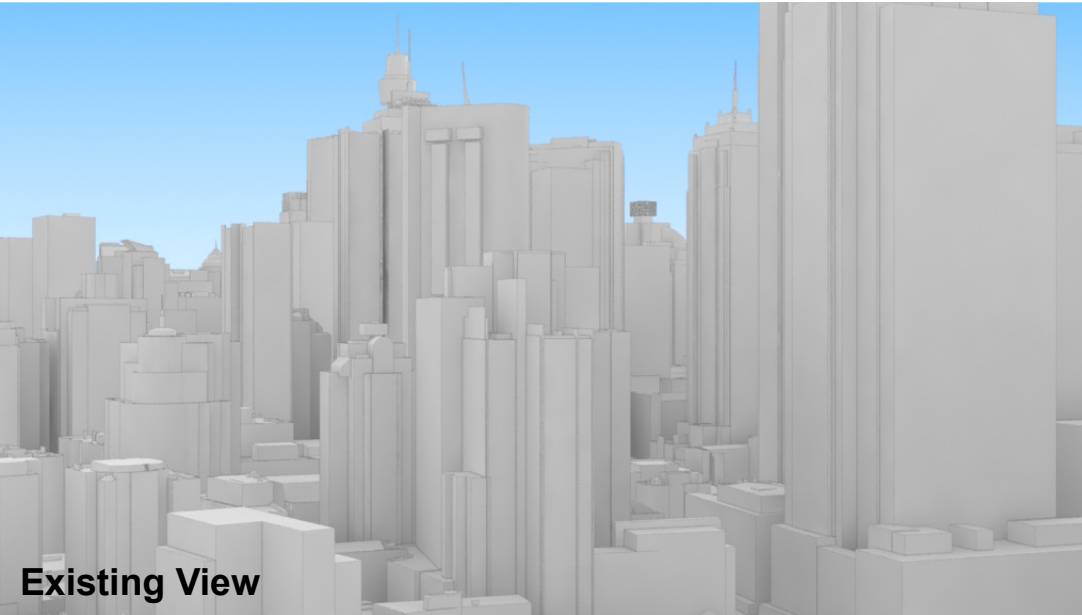
These images are produced here for view analysis purposes only.

LEGEND: 76

Key Building

View Direction (50mm Camera)

Building envelope in the Haymarket Precinct (Subject of this DA)



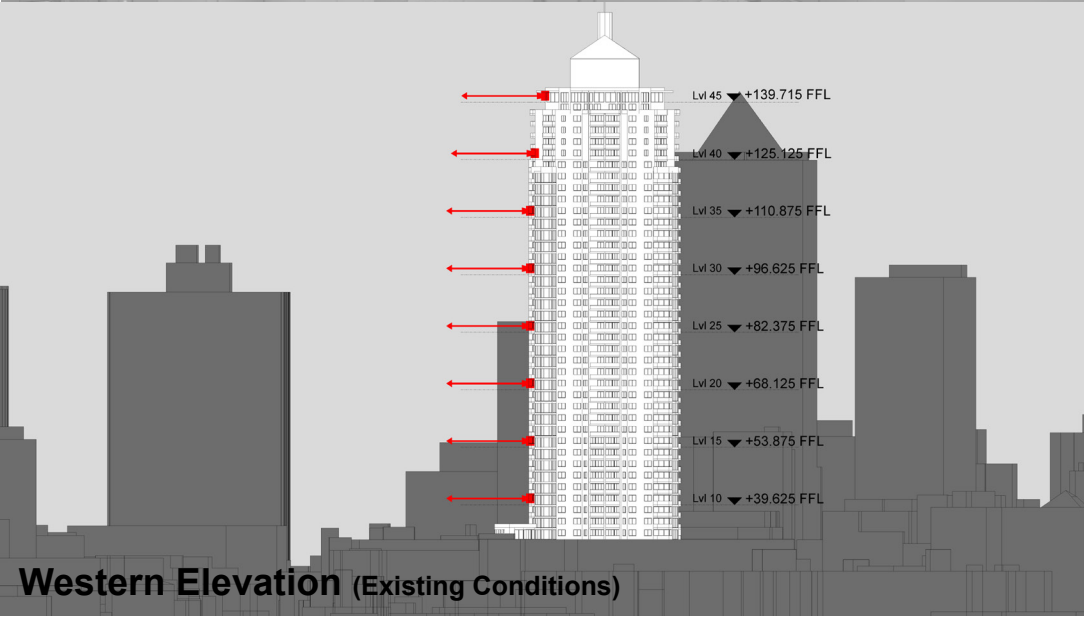
Existing View



Proposed View



Plan (Existing Conditions)



Western Elevation (Existing Conditions)

Lvl 45 +139.715 FFL
Lvl 40 +125.125 FFL
Lvl 35 +110.875 FFL
Lvl 30 +96.625 FFL
Lvl 25 +82.375 FFL
Lvl 20 +68.125 FFL
Lvl 15 +53.875 FFL
Lvl 10 +39.625 FFL

Peak Apartments

Position: P1C

Level: 25

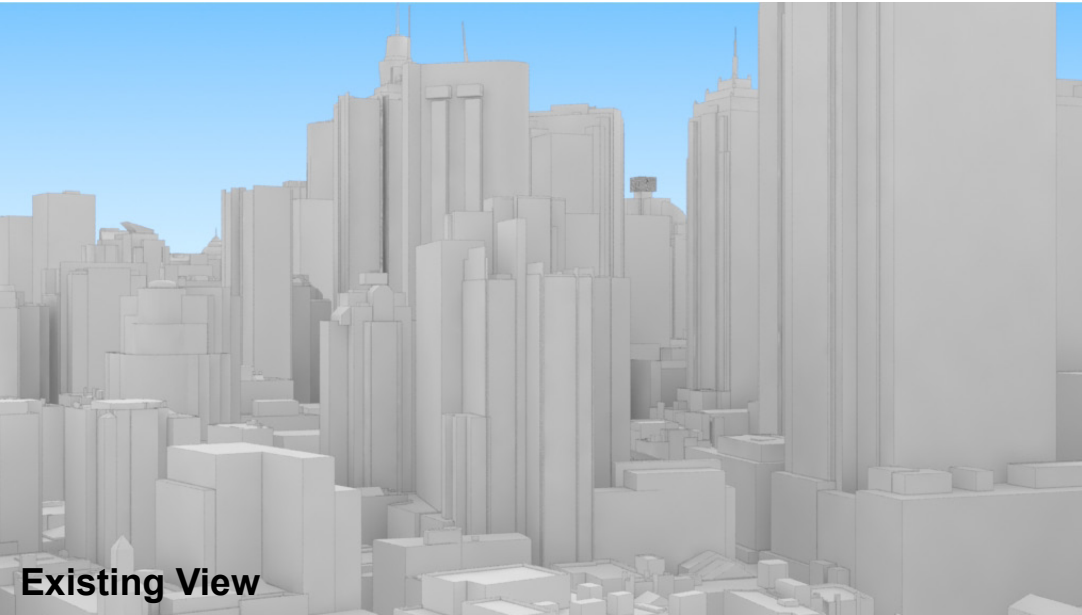
RL: 83.975 (Camera Height)

FOR INFORMATION ONLY

Illustrative designs of built forms in the Haymarket precinct do not form part of this development application (and will be the subject of separate development assessment processes) and is shown for information and broader illustrative purposes.

These images are produced here for view analysis purposes only.

- Key Building
- View Direction (50mm Camera)
- Building envelope in the Haymarket Precinct (Subject of this DA)



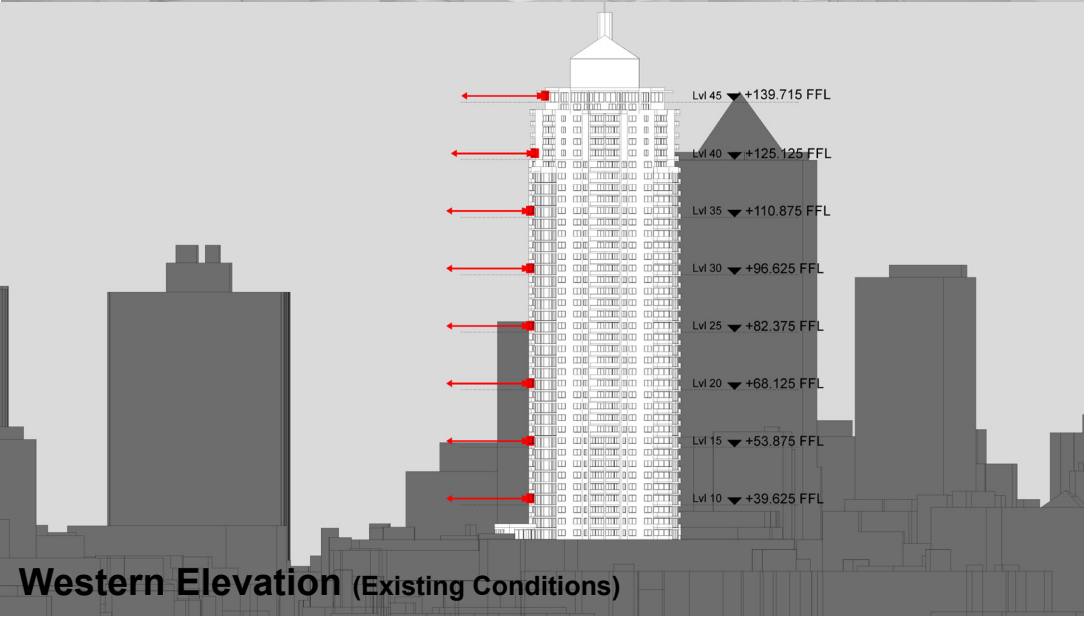
Existing View



Proposed View



Plan (Existing Conditions)



Western Elevation (Existing Conditions)

Peak Apartments

Position: P1C

Level: 20

RL: 69.725 (Camera Height)

FOR INFORMATION ONLY

Illustrative designs of built forms in the Haymarket precinct do not form part of this development application (and will be the subject of separate development assessment processes) and is shown for information and broader illustrative purposes.

These images are produced here for view analysis purposes only.

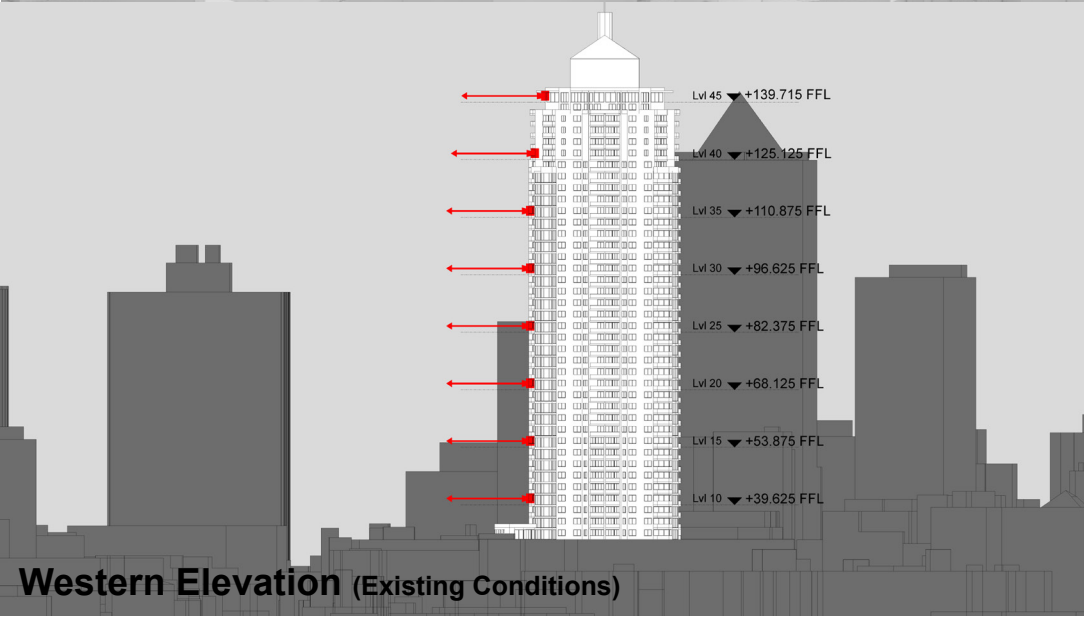
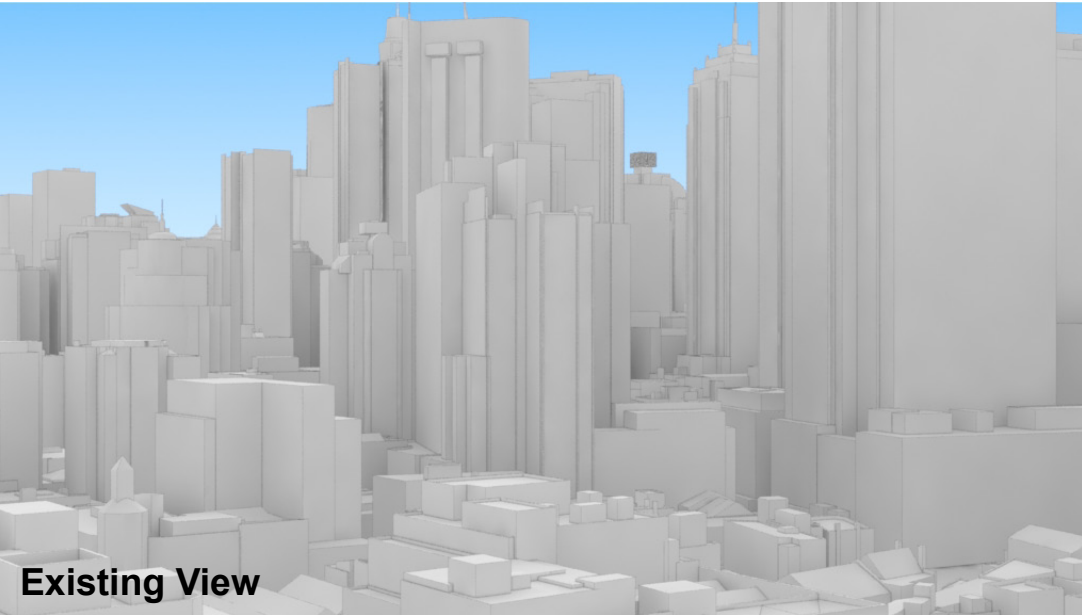
LEGEND:

78

Key Building

View Direction (50mm Camera)

Building envelope in the Haymarket Precinct (Subject of this DA)



Peak Apartments

Position: P1C

Level: 15

RL: 55.475 (Camera Height)

FOR INFORMATION ONLY

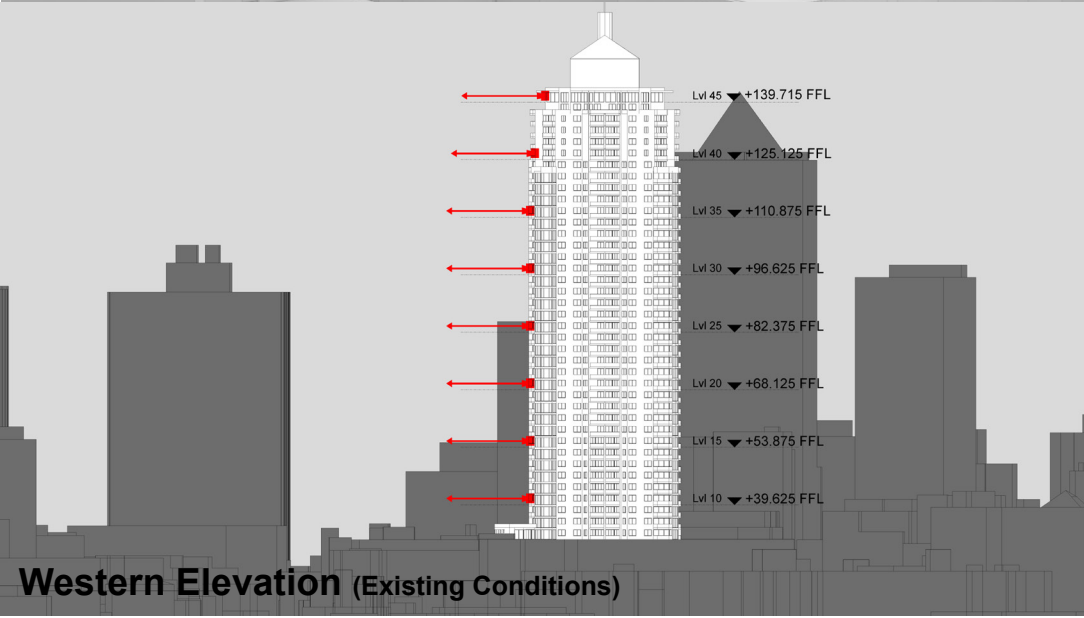
Illustrative designs of built forms in the Haymarket precinct do not form part of this development application (and will be the subject of separate development assessment processes) and is shown for information and broader illustrative purposes.

These images are produced here for view analysis purposes only.

Key Building

View Direction (50mm Camera)

Building envelope in the Haymarket Precinct (Subject of this DA)



Peak Apartments

Position: P1C

Level: 10

RL: 41.225 (Camera Height)

FOR INFORMATION ONLY

Illustrative designs of built forms in the Haymarket precinct do not form part of this development application (and will be the subject of separate development assessment processes) and is shown for information and broader illustrative purposes.

These images are produced here for view analysis purposes only.

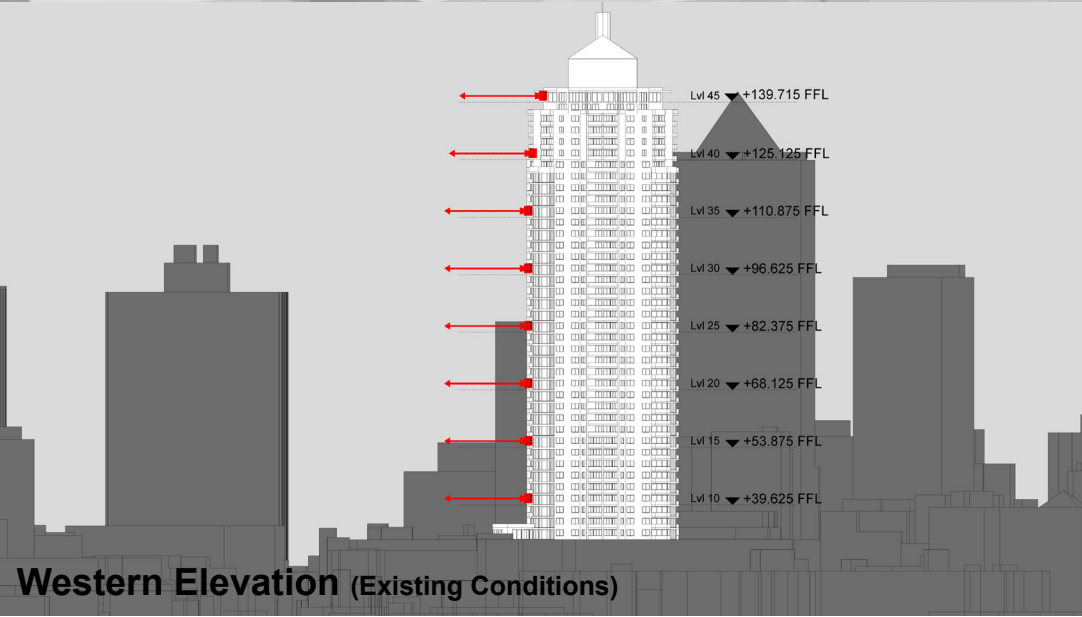
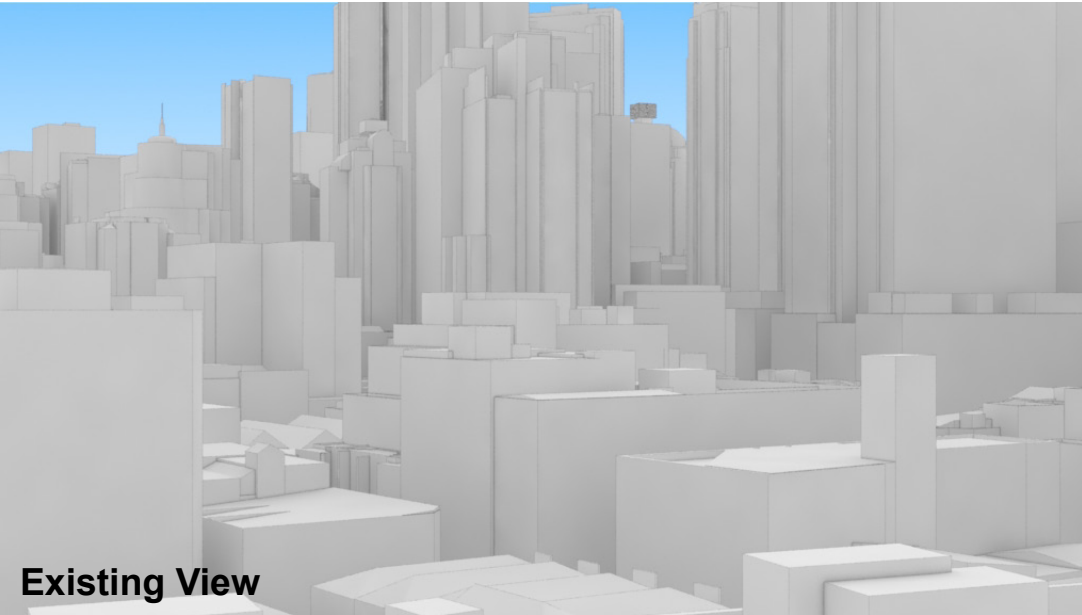
LEGEND:

Key Building

View Direction (50mm Camera)

Building envelope in the Haymarket Precinct (Subject of this DA)

80



Peak Apartments

Position: P2A

Level: 45

RL: 140.975 (Camera Height)

FOR INFORMATION ONLY

Illustrative designs of built forms in the Haymarket precinct do not form part of this development application (and will be the subject of separate development assessment processes) and is shown for information and broader illustrative purposes.

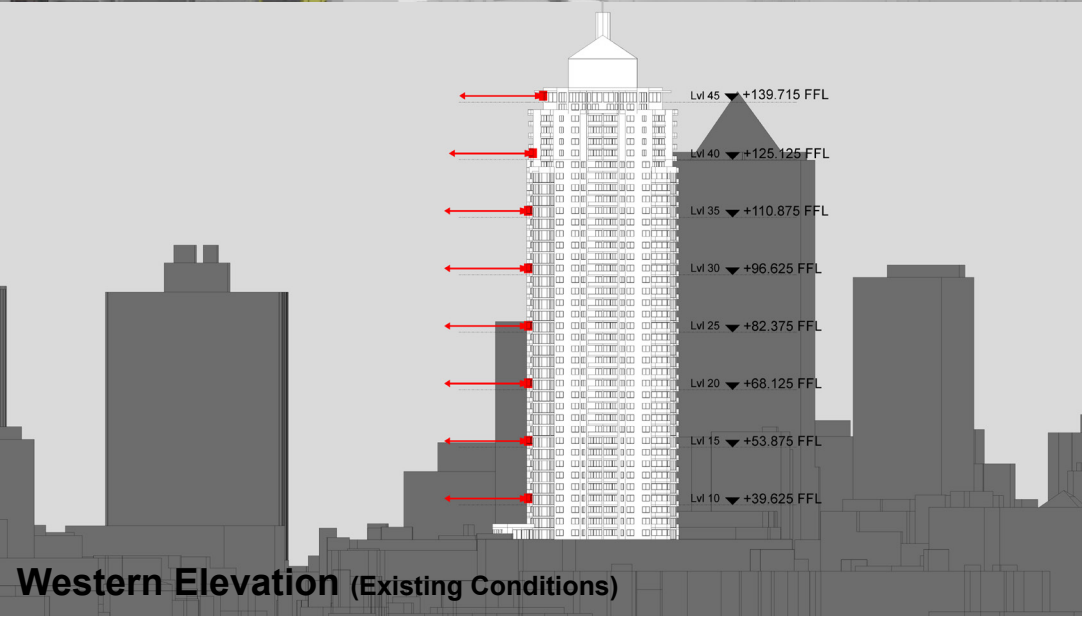
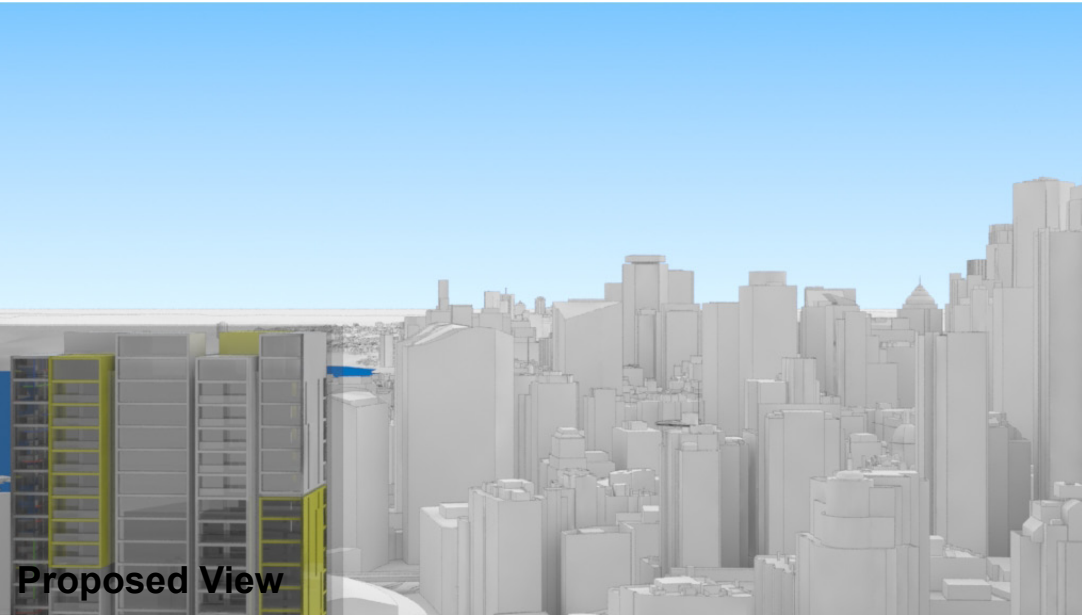
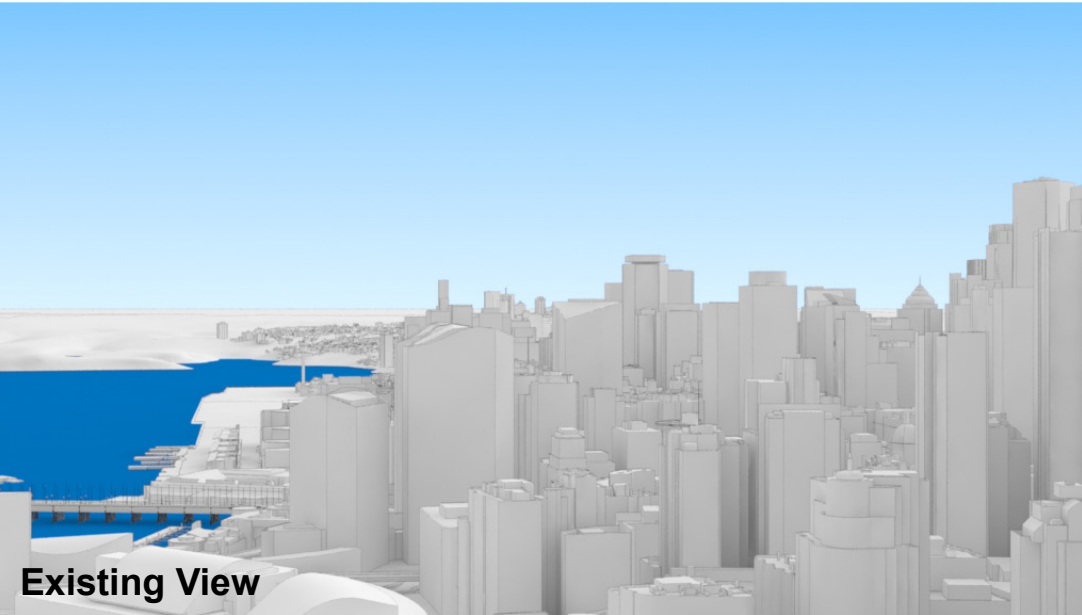
These images are produced here for view analysis purposes only.

LEGEND: 81

Key Building

View Direction (50mm Camera)

Building envelope in the Haymarket Precinct (Subject of this DA)



Peak Apartments

Position: P2A

Level: 40

RL: 126.725 (Camera Height)

FOR INFORMATION ONLY

Illustrative designs of built forms in the Haymarket precinct do not form part of this development application (and will be the subject of separate development assessment processes) and is shown for information and broader illustrative purposes.

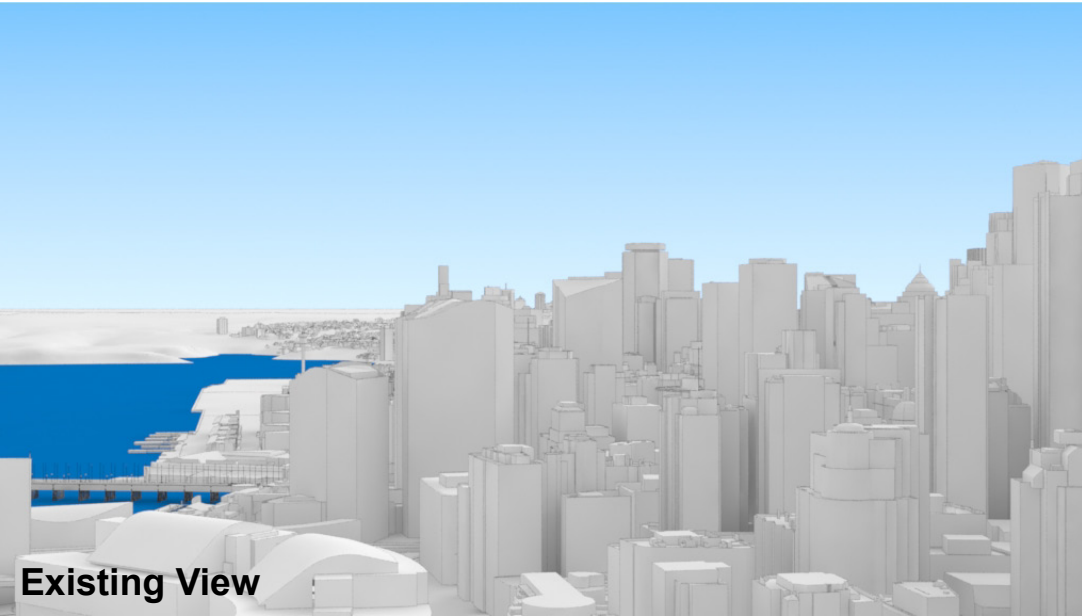
These images are produced here for view analysis purposes only.

LEGEND: 82

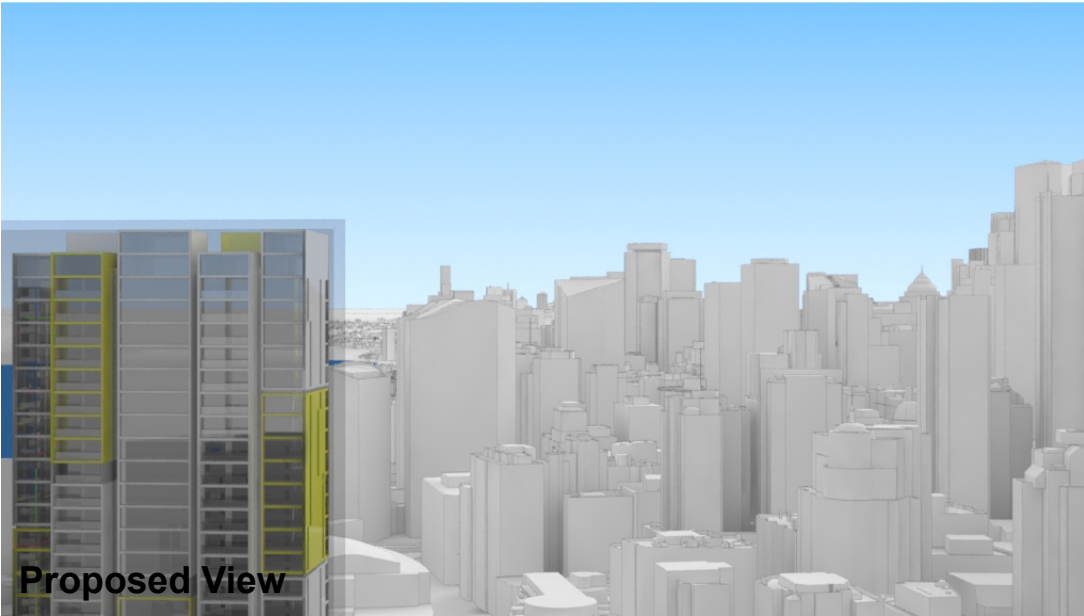
Key Building

View Direction (50mm Camera)

Building envelope in the Haymarket Precinct (Subject of this DA)



Existing View



Proposed View



Peak Apartments

Position: P2A

Level: 30

RL: 98.225 (Camera Height)

FOR INFORMATION ONLY

Illustrative designs of built forms in the Haymarket precinct do not form part of this development application (and will be the subject of separate development assessment processes) and is shown for information and broader illustrative purposes.

These images are produced here for view analysis purposes only.

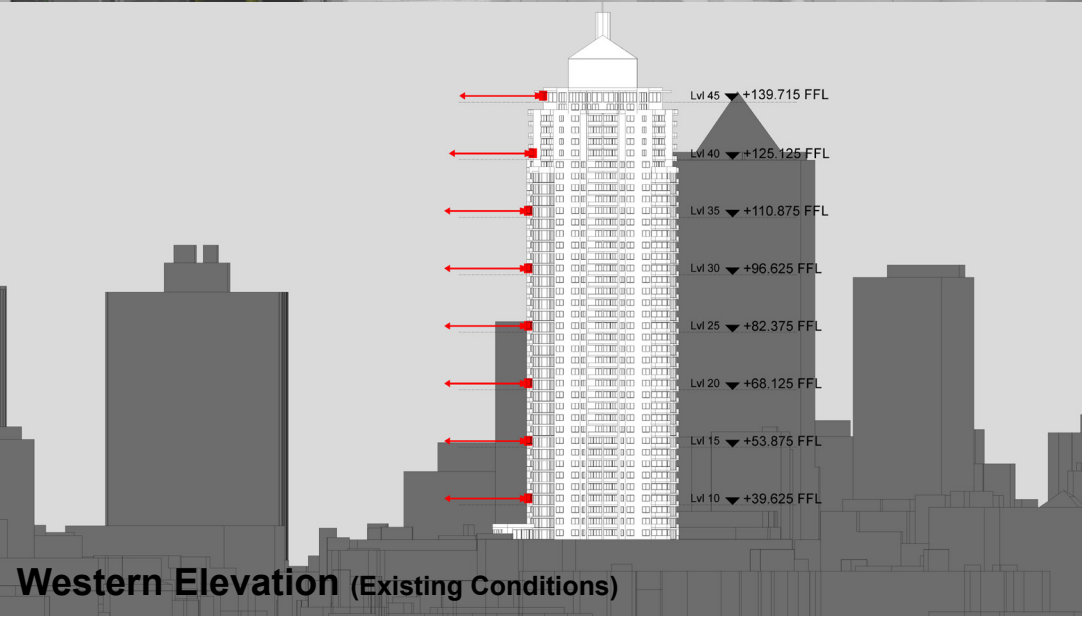
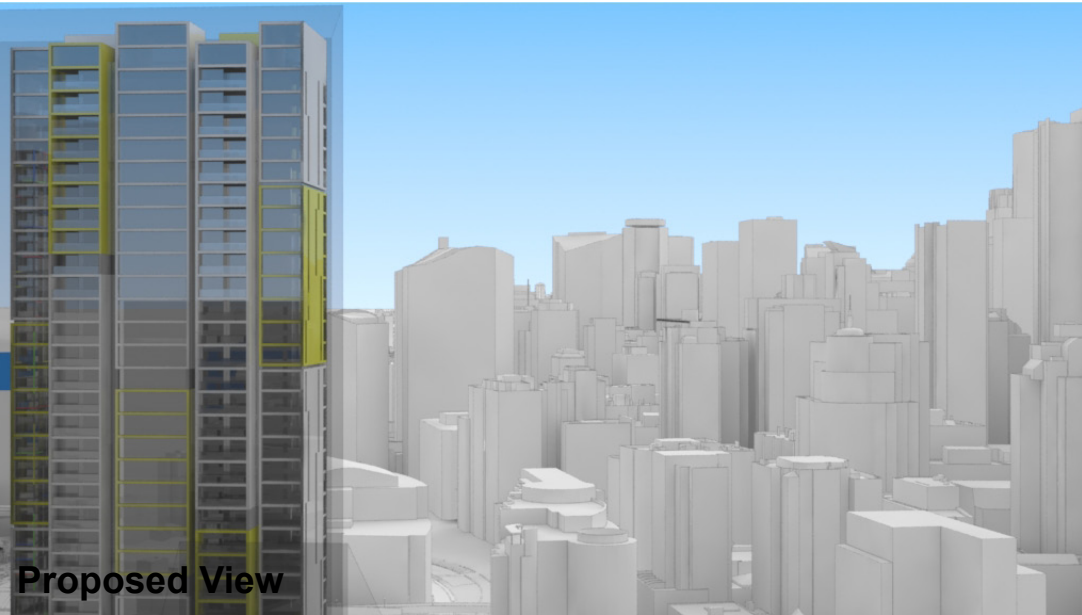
LEGEND:

84

Key Building

View Direction (50mm Camera)

Building envelope in the Haymarket Precinct (Subject of this DA)



Peak Apartments

Position: P2A

Level: 25

RL: 83.975 (Camera Height)

FOR INFORMATION ONLY

Illustrative designs of built forms in the Haymarket precinct do not form part of this development application (and will be the subject of separate development assessment processes) and is shown for information and broader illustrative purposes.

These images are produced here for view analysis purposes only.

LEGEND: 85

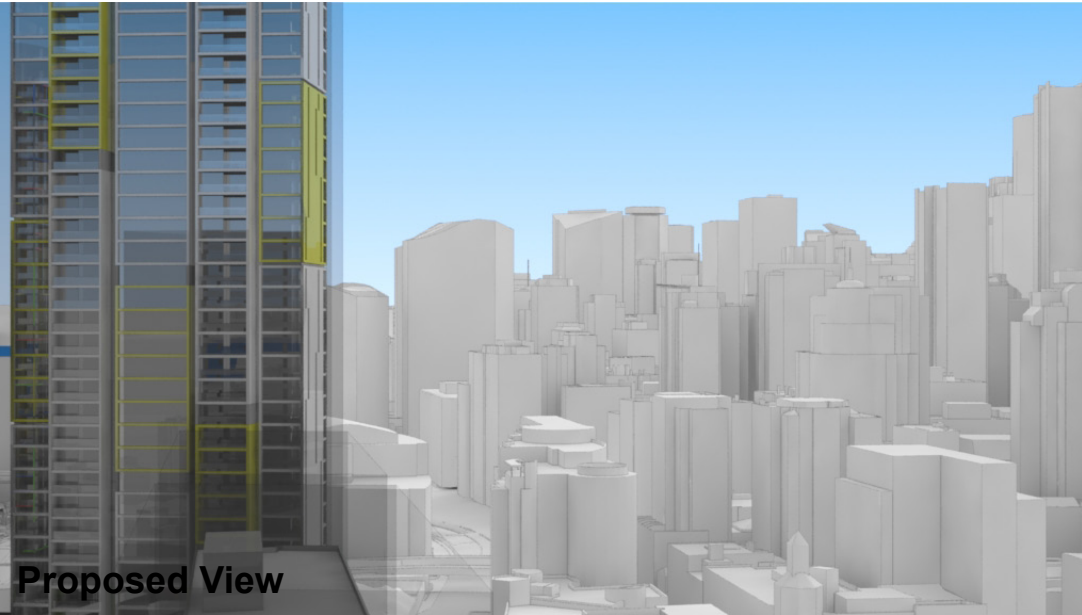
Key Building

View Direction (50mm Camera)

Building envelope in the Haymarket Precinct (Subject of this DA)



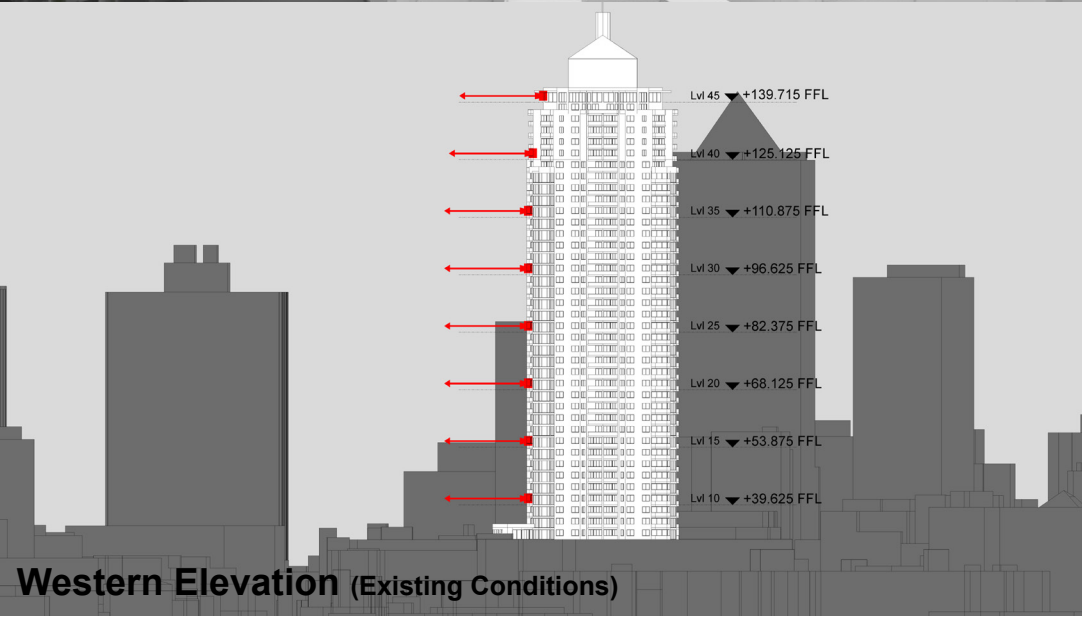
Existing View



Proposed View



Plan (Existing Conditions)



Western Elevation (Existing Conditions)

Lvl 45 +139.715 FFL
Lvl 40 +125.125 FFL
Lvl 35 +110.875 FFL
Lvl 30 +96.625 FFL
Lvl 25 +82.375 FFL
Lvl 20 +68.125 FFL
Lvl 15 +53.875 FFL
Lvl 10 +39.625 FFL

Peak Apartments

Position: P2A

Level: 20

RL: 69.725 (Camera Height)

FOR INFORMATION ONLY

Illustrative designs of built forms in the Haymarket precinct do not form part of this development application (and will be the subject of separate development assessment processes) and is shown for information and broader illustrative purposes.

These images are produced here for view analysis purposes only.

LEGEND:

Key Building

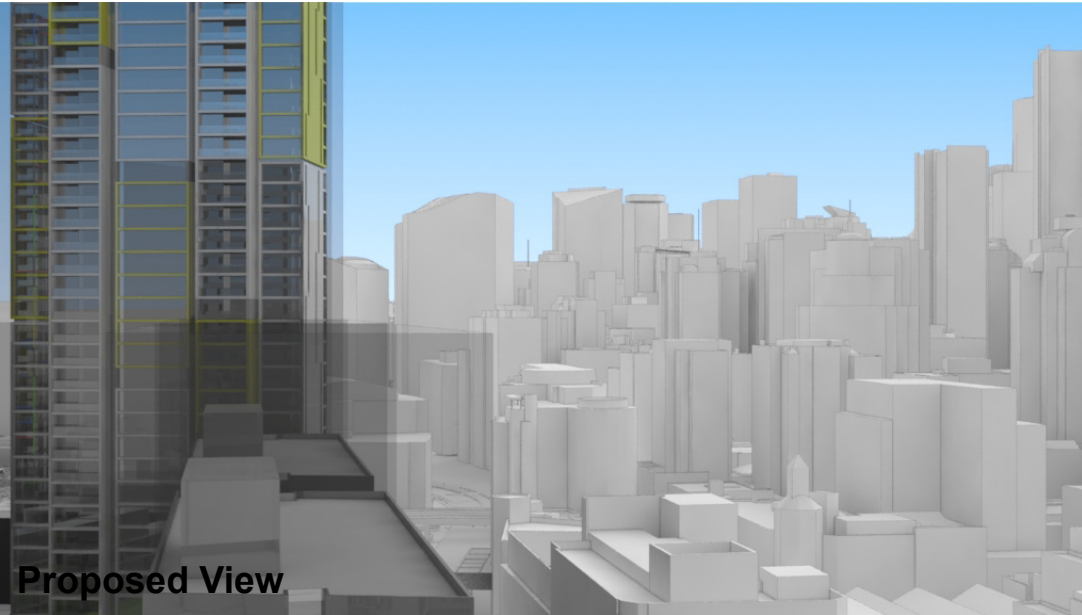
View Direction (50mm Camera)

Building envelope in the Haymarket Precinct (Subject of this DA)

86



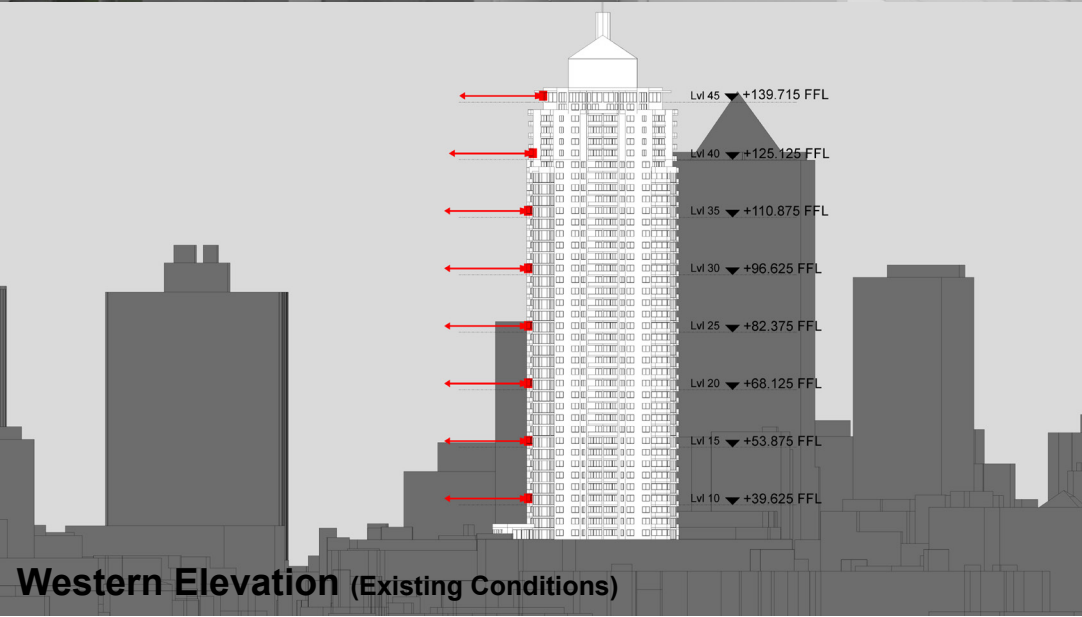
Existing View



Proposed View



Plan (Existing Conditions)



Western Elevation (Existing Conditions)

Peak Apartments

Position: P2A

Level: 15

RL: 55.475 (Camera Height)

FOR INFORMATION ONLY

Illustrative designs of built forms in the Haymarket precinct do not form part of this development application (and will be the subject of separate development assessment processes) and is shown for information and broader illustrative purposes.

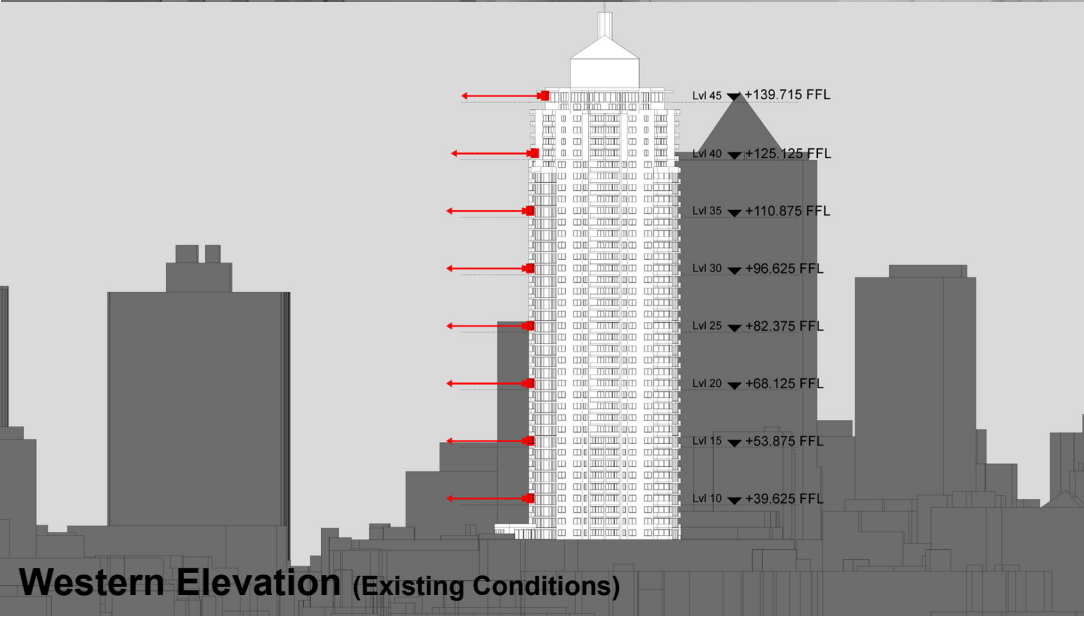
These images are produced here for view analysis purposes only.

LEGEND: 87

Key Building

View Direction (50mm Camera)

Building envelope in the Haymarket Precinct (Subject of this DA)



Peak Apartments

Position: P2A

Level: 10

RL: 41.225 (Camera Height)

FOR INFORMATION ONLY

Illustrative designs of built forms in the Haymarket precinct do not form part of this development application (and will be the subject of separate development assessment processes) and is shown for information and broader illustrative purposes.

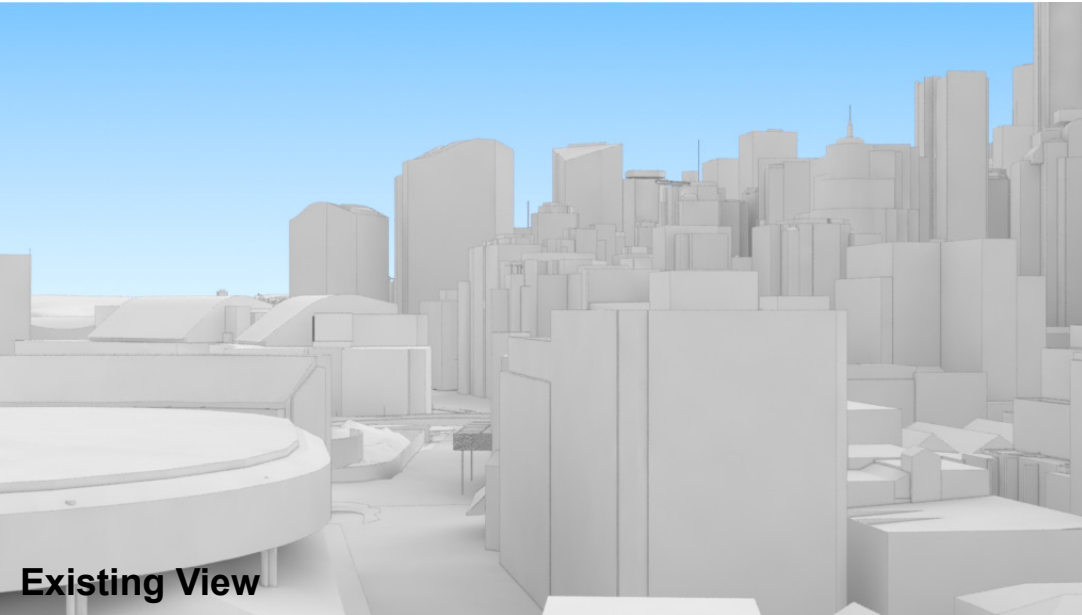
These images are produced here for view analysis purposes only.

LEGEND: 88

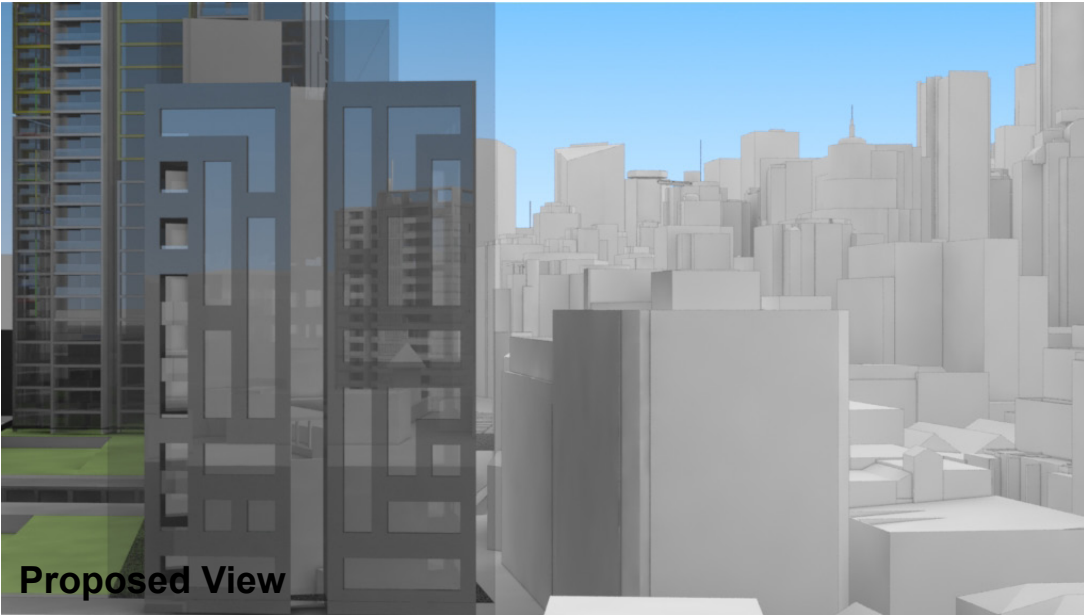
Key Building

View Direction (50mm Camera)

Building envelope in the Haymarket Precinct (Subject of this DA)



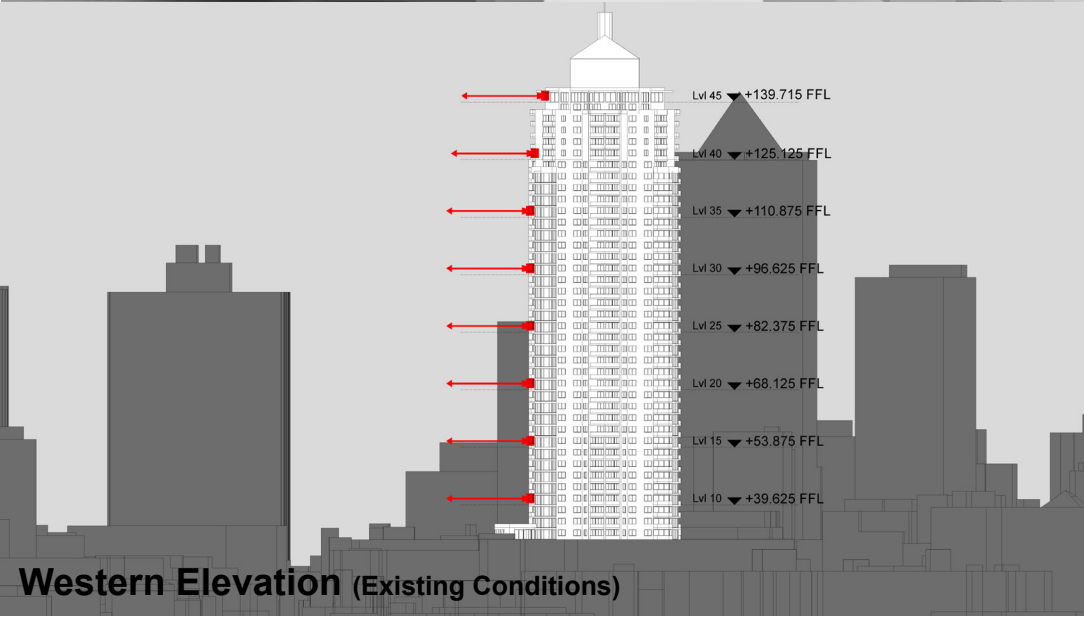
Existing View



Proposed View



Plan (Existing Conditions)



Western Elevation (Existing Conditions)

Peak Apartments

Position: P2B

Level: 45

RL: 140.975 (Camera Height)

FOR INFORMATION ONLY

Illustrative designs of built forms in the Haymarket precinct do not form part of this development application (and will be the subject of separate development assessment processes) and is shown for information and broader illustrative purposes.

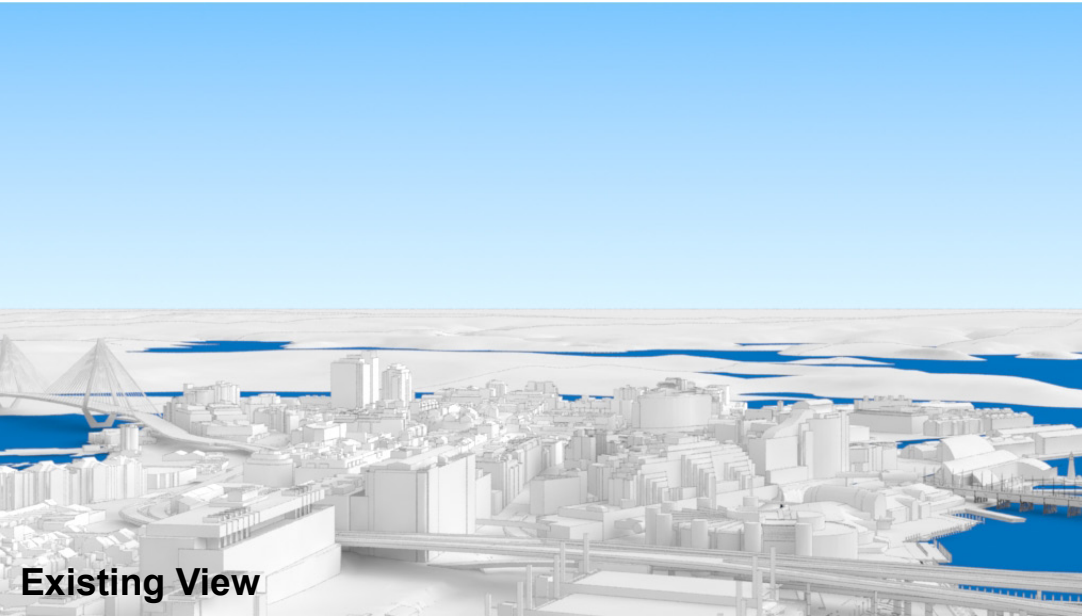
These images are produced here for view analysis purposes only.

LEGEND: 89

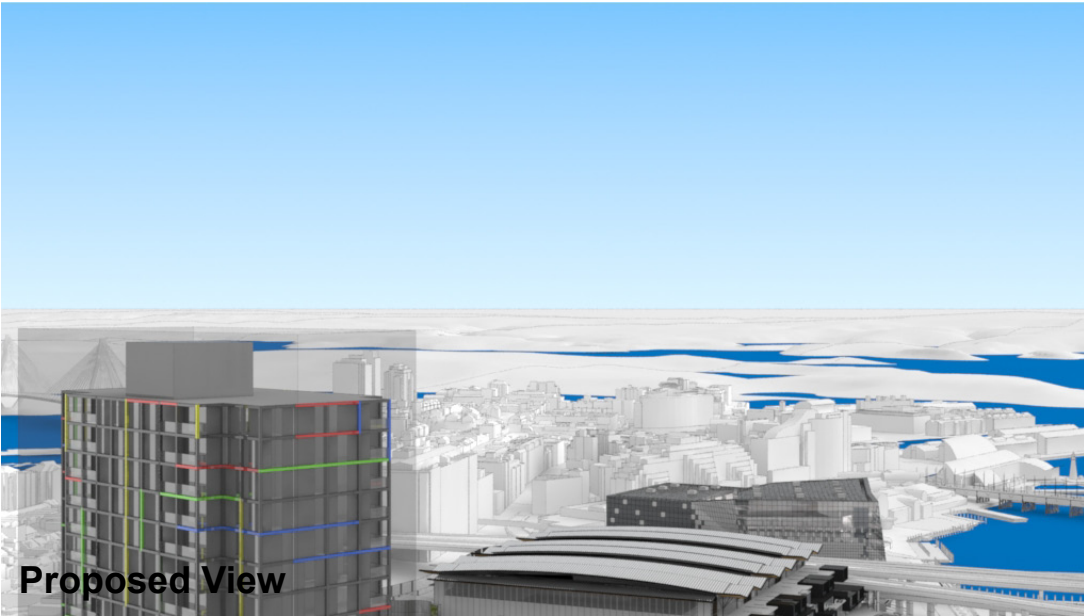
Key Building

View Direction (50mm Camera)

Building envelope in the Haymarket Precinct (Subject of this DA)



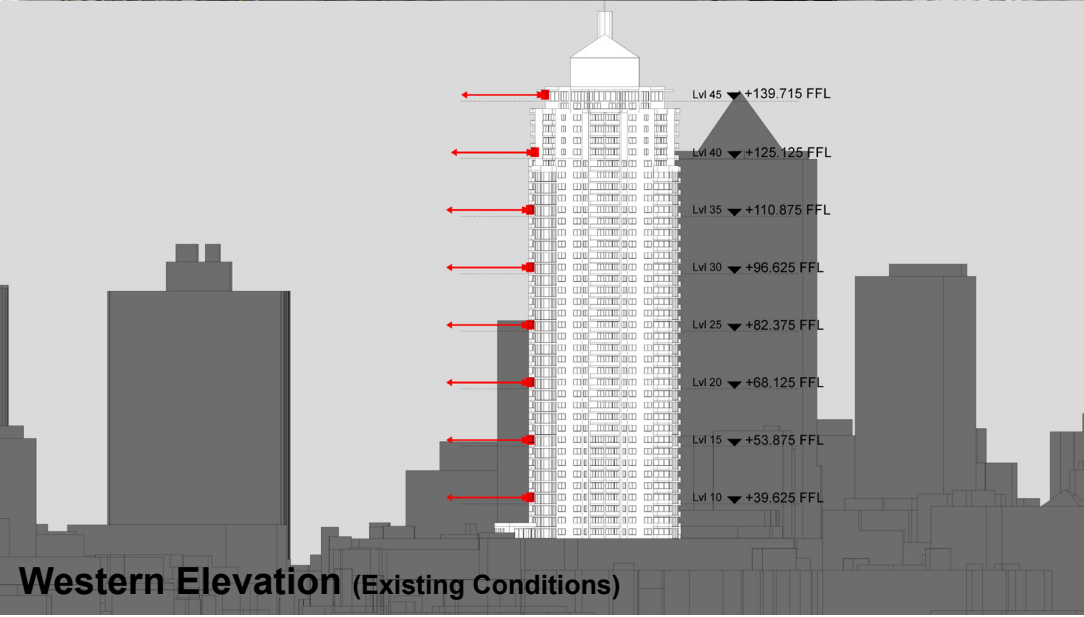
Existing View



Proposed View



Plan (Existing Conditions)



Western Elevation (Existing Conditions)

Peak Apartments

Position: P2B

Level: 40

RL: 126.725 (Camera Height)

FOR INFORMATION ONLY

Illustrative designs of built forms in the Haymarket precinct do not form part of this development application (and will be the subject of separate development assessment processes) and is shown for information and broader illustrative purposes.

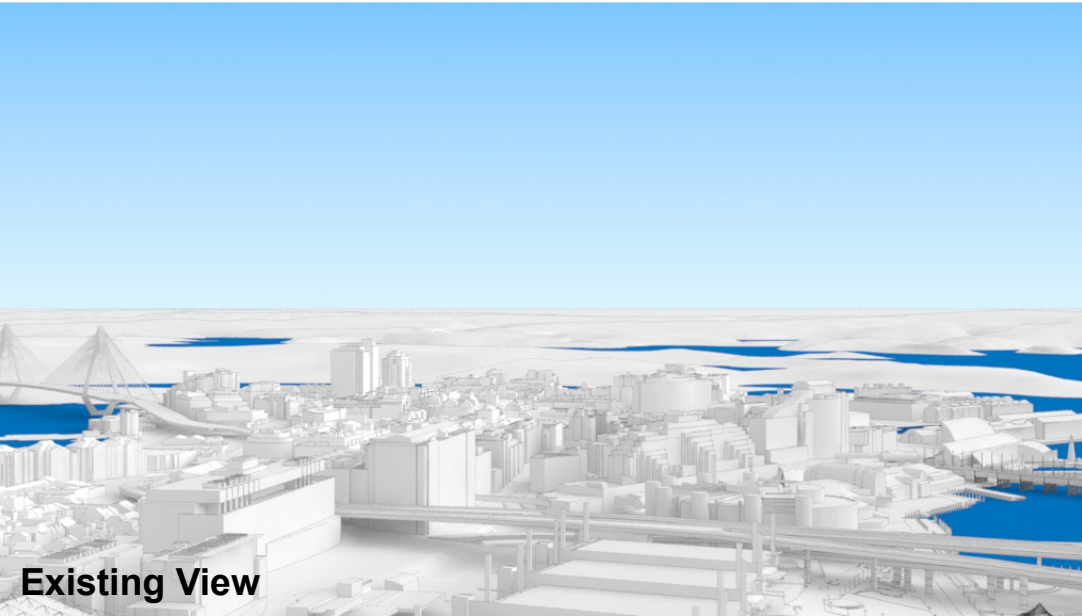
These images are produced here for view analysis purposes only.

LEGEND: 90

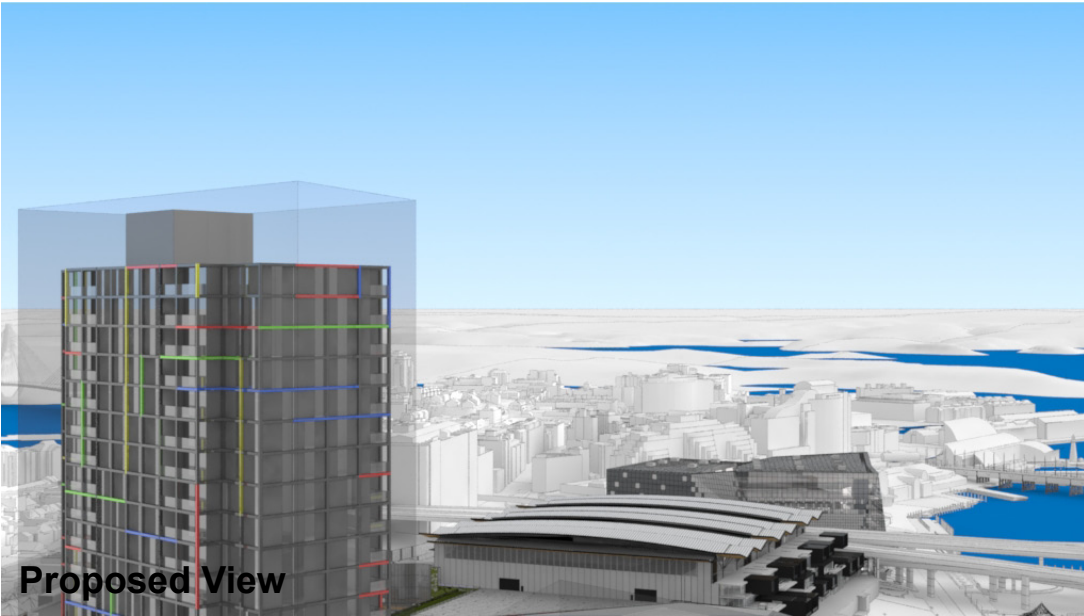
Key Building

View Direction (50mm Camera)

Building envelope in the Haymarket Precinct (Subject of this DA)



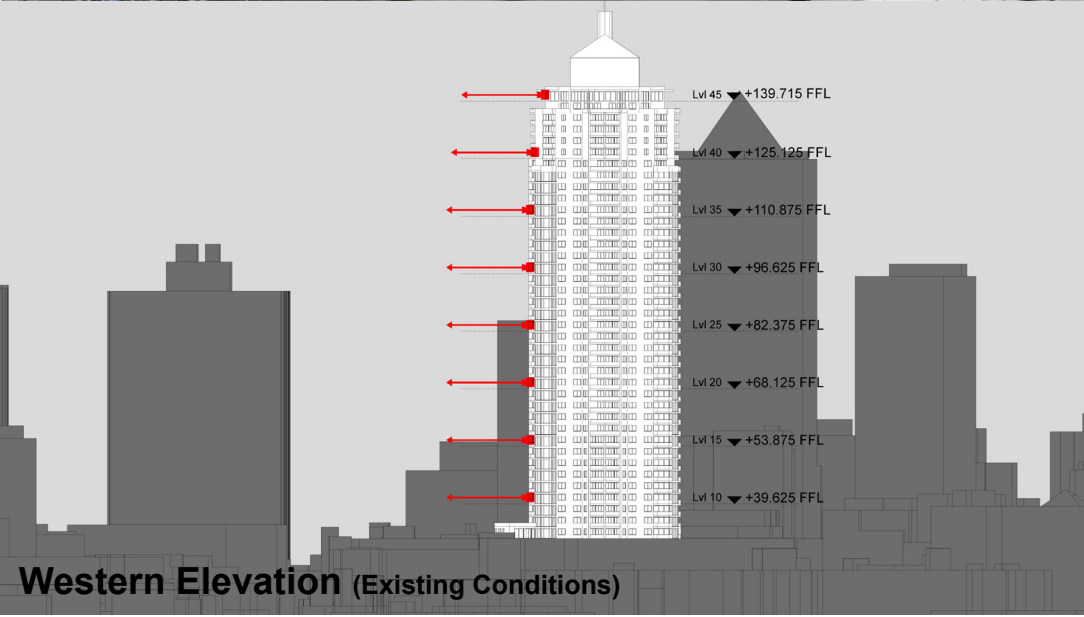
Existing View



Proposed View



Plan (Existing Conditions)



Western Elevation (Existing Conditions)

Peak Apartments

Position: P2B

Level: 35

RL: 112.475 (Camera Height)

FOR INFORMATION ONLY

Illustrative designs of built forms in the Haymarket precinct do not form part of this development application (and will be the subject of separate development assessment processes) and is shown for information and broader illustrative purposes.

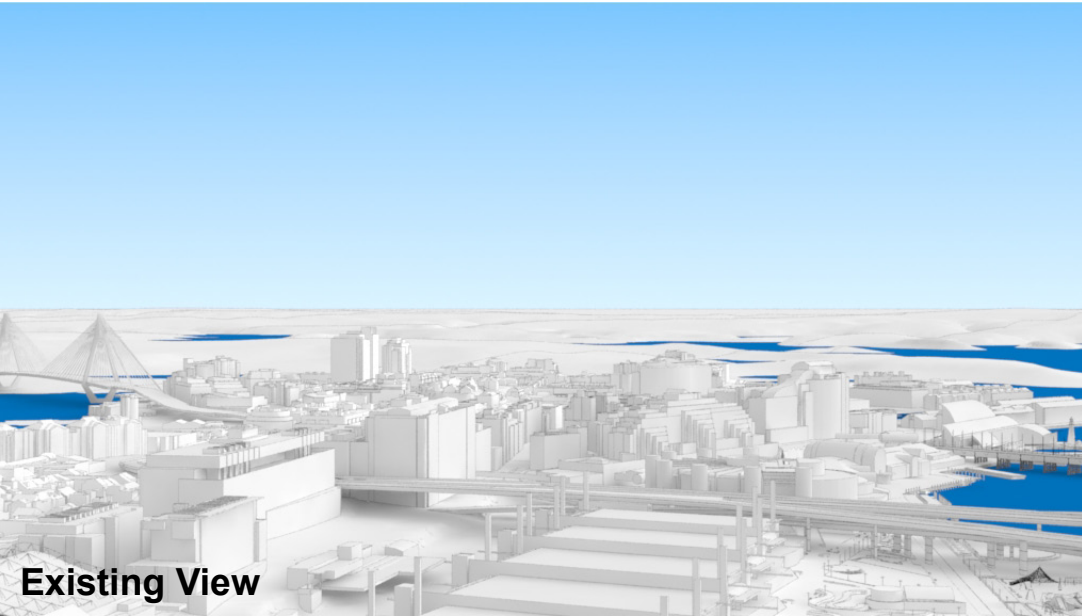
These images are produced here for view analysis purposes only.

LEGEND: 91

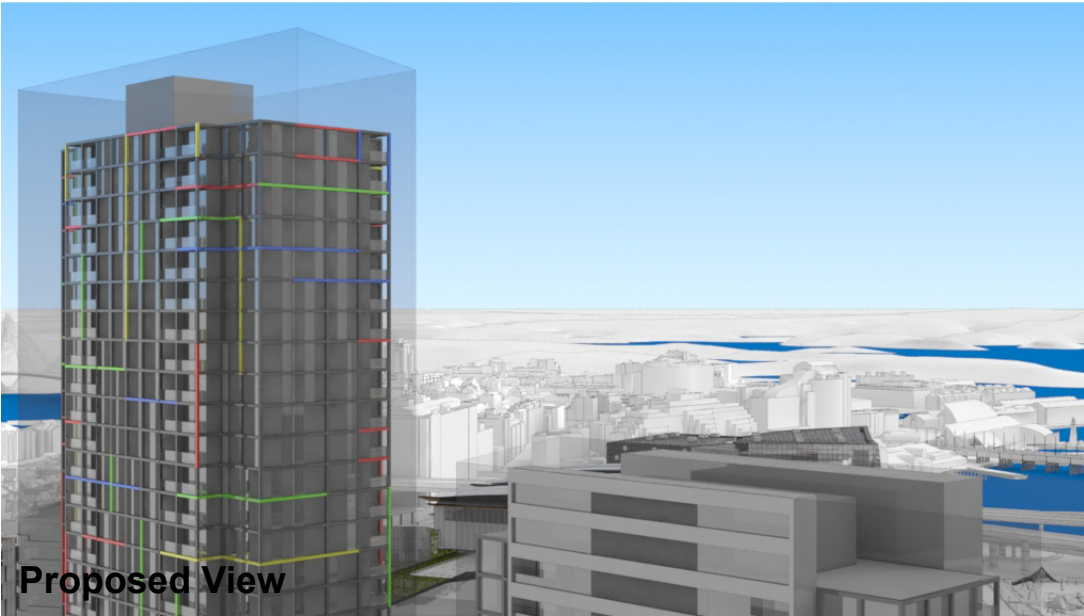
Key Building

View Direction (50mm Camera)

Building envelope in the Haymarket Precinct (Subject of this DA)



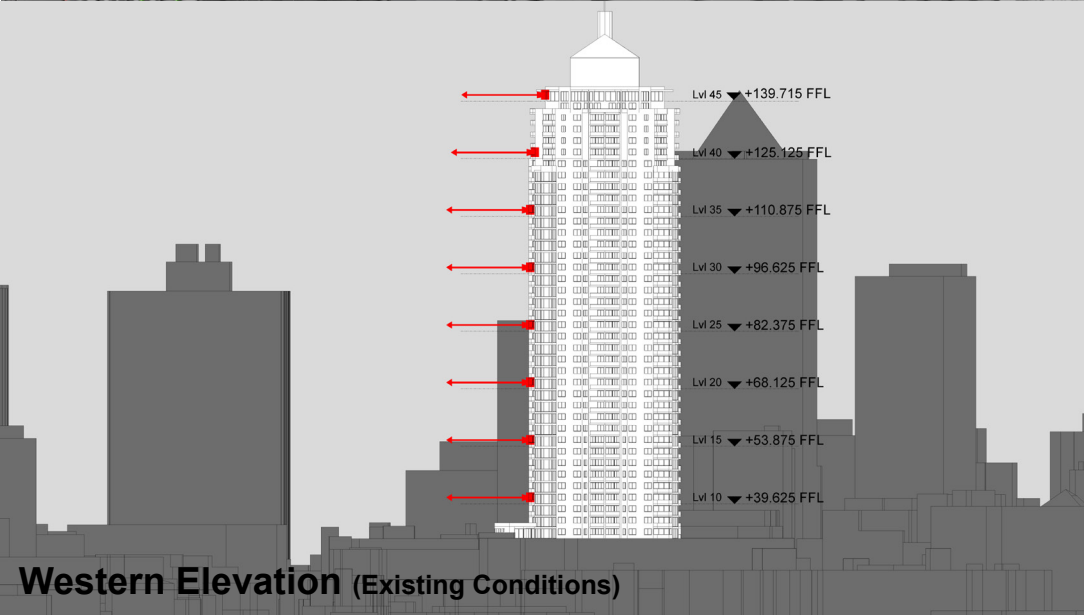
Existing View



Proposed View



Plan (Existing Conditions)



Western Elevation (Existing Conditions)

Peak Apartments

Position: P2B

Level: 30

RL: 98.225 (Camera Height)

FOR INFORMATION ONLY

Illustrative designs of built forms in the Haymarket precinct do not form part of this development application (and will be the subject of separate development assessment processes) and is shown for information and broader illustrative purposes.

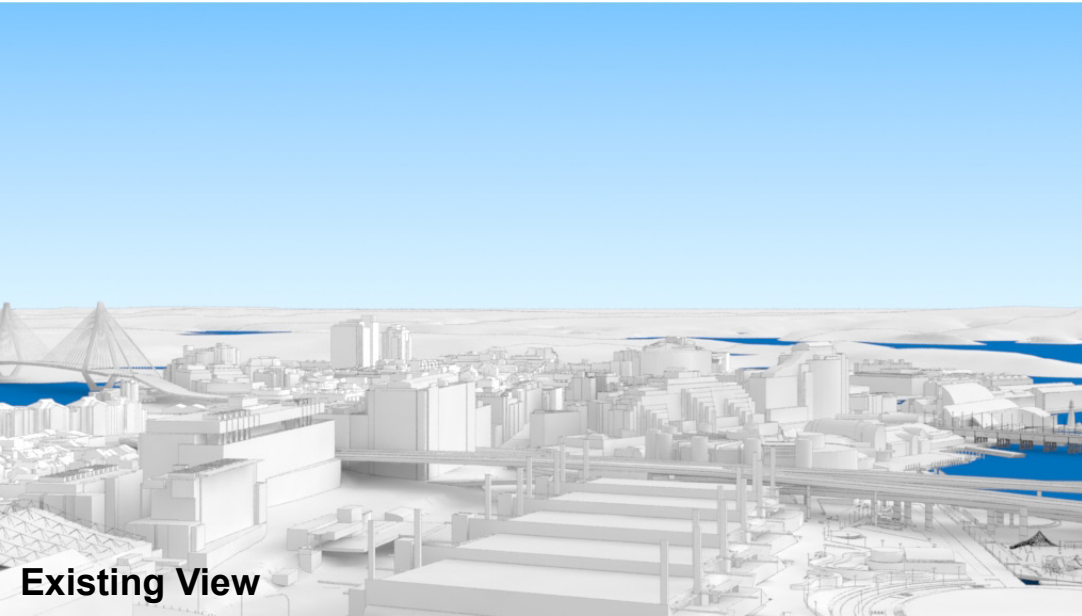
These images are produced here for view analysis purposes only.

LEGEND: 92

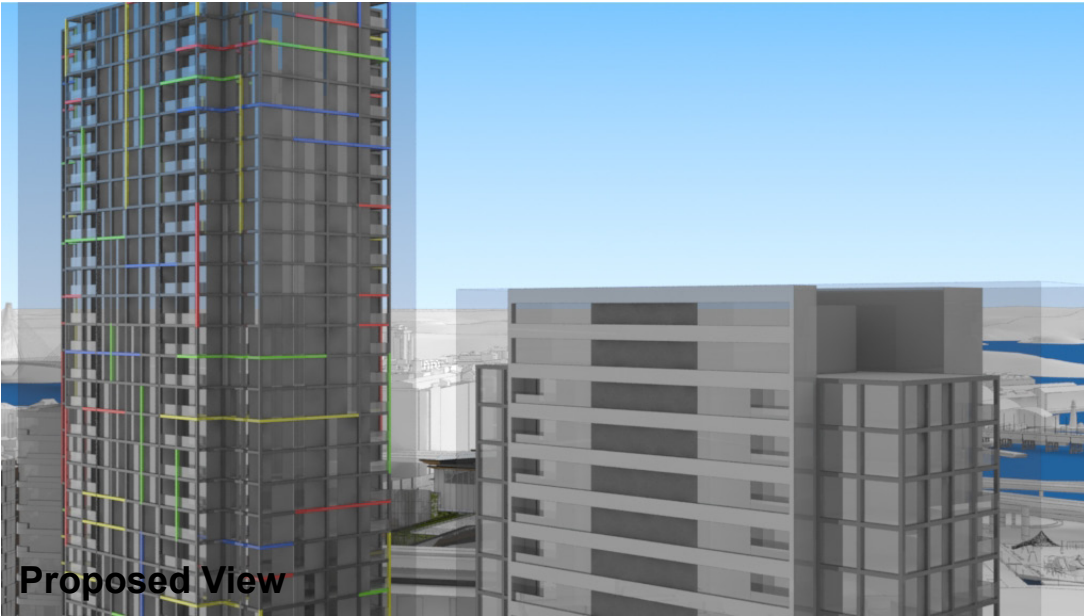
Key Building

View Direction (50mm Camera)

Building envelope in the Haymarket Precinct (Subject of this DA)



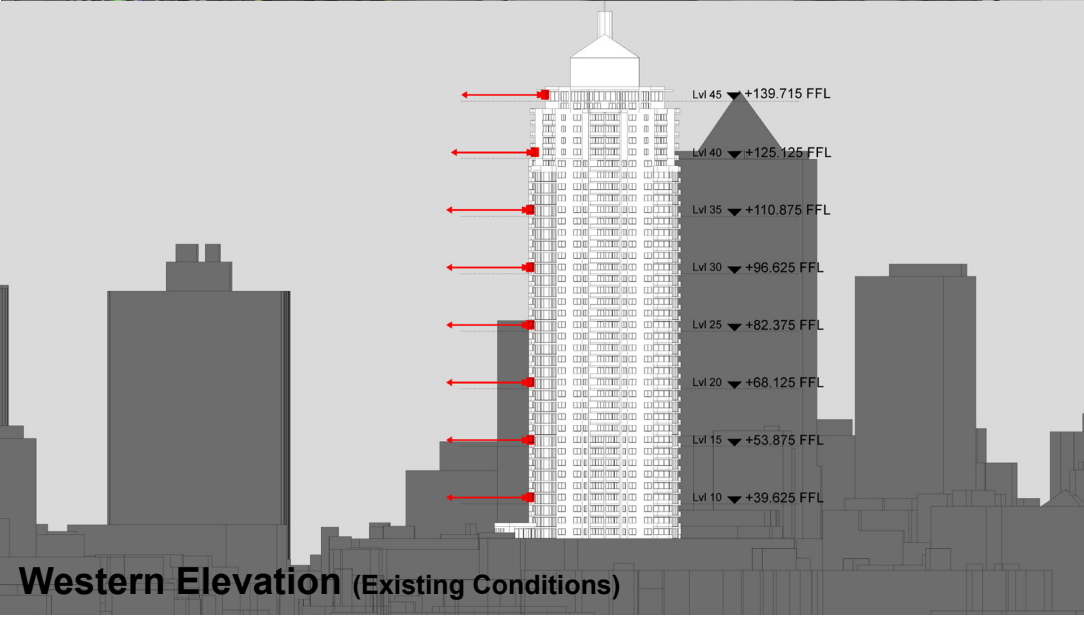
Existing View



Proposed View



Plan (Existing Conditions)



Western Elevation (Existing Conditions)

Peak Apartments

Position: P2B

Level: 25

RL: 83.975 (Camera Height)

FOR INFORMATION ONLY

Illustrative designs of built forms in the Haymarket precinct do not form part of this development application (and will be the subject of separate development assessment processes) and is shown for information and broader illustrative purposes.

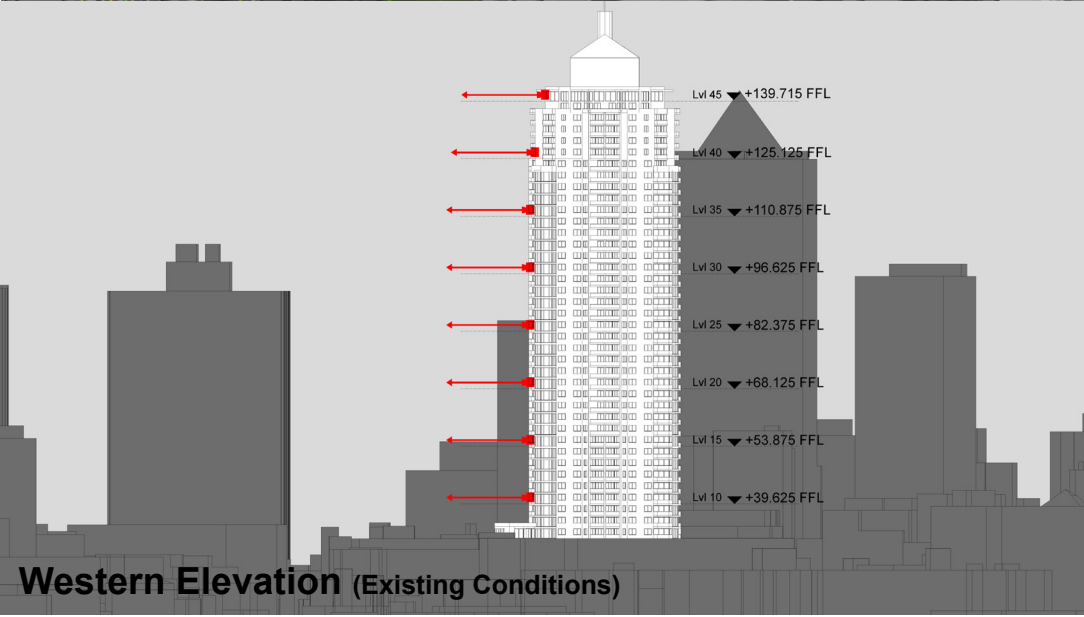
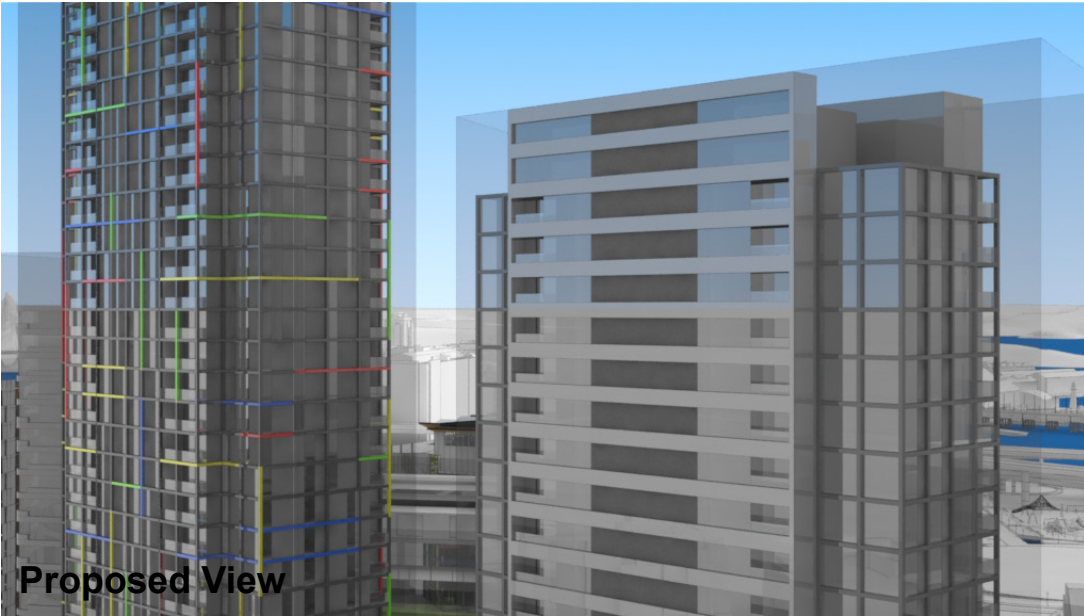
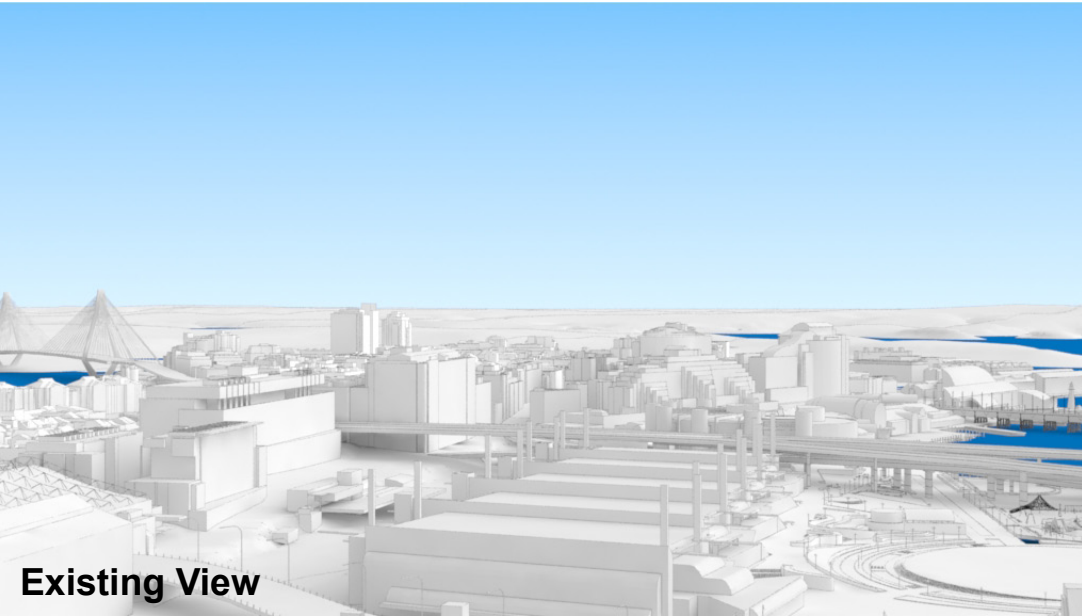
These images are produced here for view analysis purposes only.

LEGEND: 93

Key Building

View Direction (50mm Camera)

Building envelope in the Haymarket Precinct (Subject of this DA)



Peak Apartments

Position: P2B

Level: 20

RL: 69.725 (Camera Height)

FOR INFORMATION ONLY

Illustrative designs of built forms in the Haymarket precinct do not form part of this development application (and will be the subject of separate development assessment processes) and is shown for information and broader illustrative purposes.

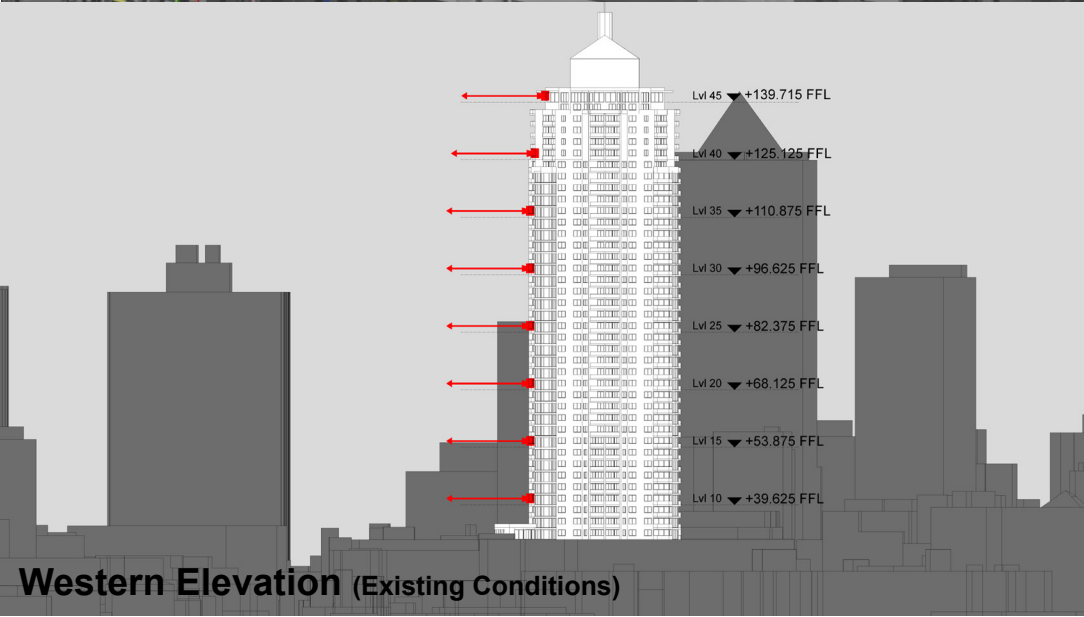
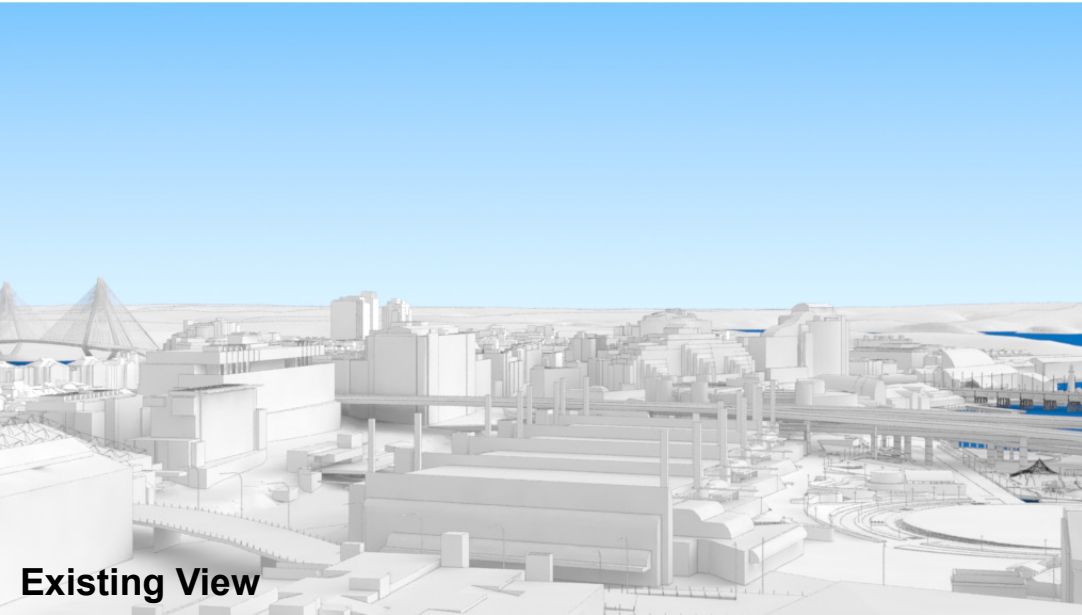
These images are produced here for view analysis purposes only.

LEGEND: 94

Key Building

View Direction (50mm Camera)

Building envelope in the Haymarket Precinct (Subject of this DA)



Peak Apartments

Position: P2B

Level: 15

RL: 55.475 (Camera Height)

FOR INFORMATION ONLY

Illustrative designs of built forms in the Haymarket precinct do not form part of this development application (and will be the subject of separate development assessment processes) and is shown for information and broader illustrative purposes.

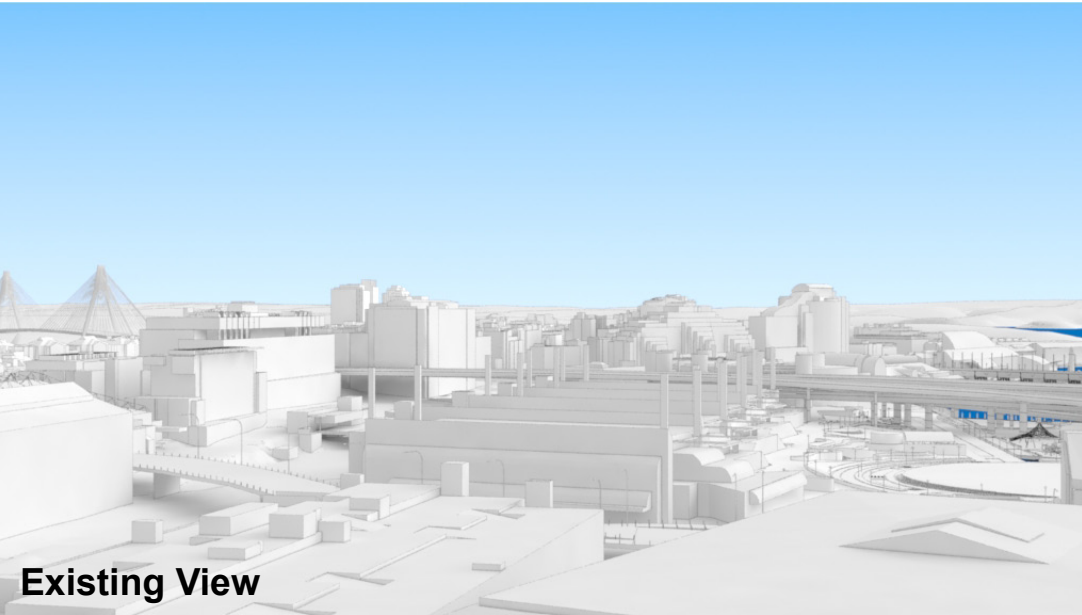
These images are produced here for view analysis purposes only.

LEGEND: 95

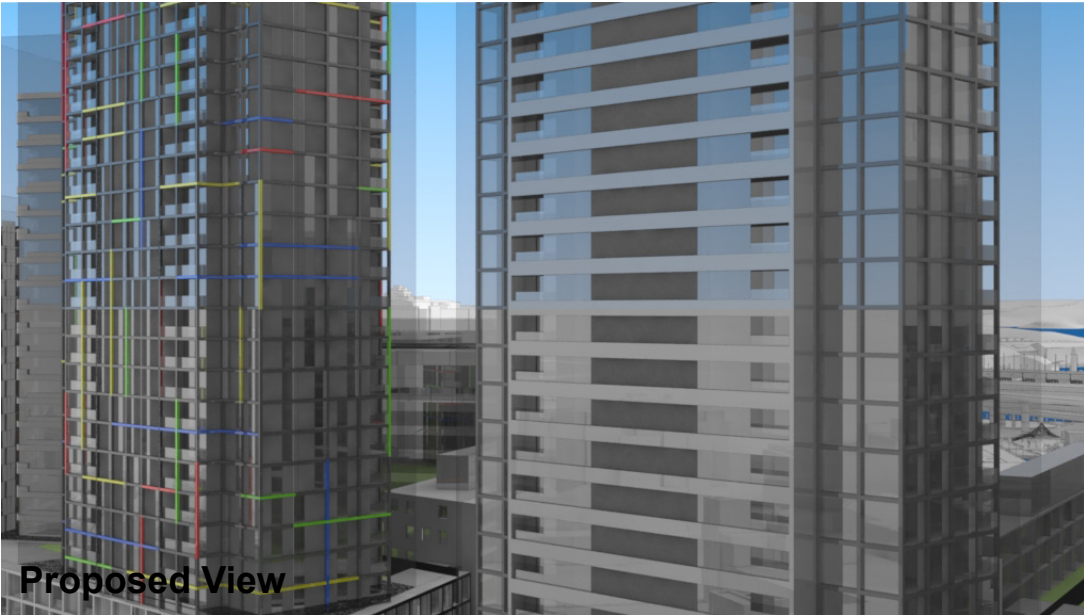
Key Building

View Direction (50mm Camera)

Building envelope in the Haymarket Precinct (Subject of this DA)



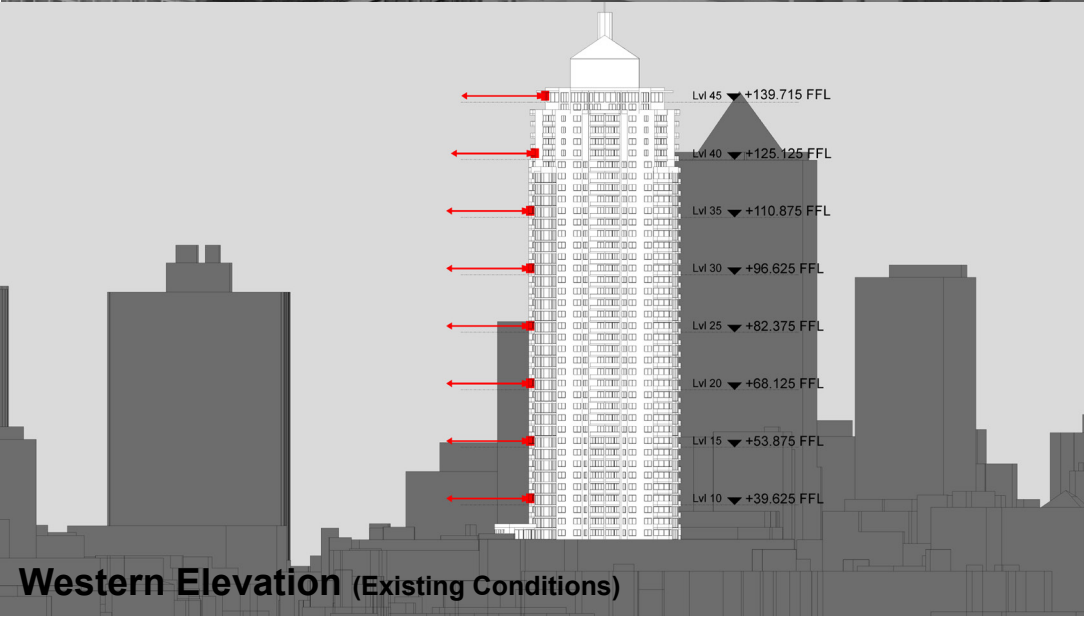
Existing View



Proposed View



Plan (Existing Conditions)



Western Elevation (Existing Conditions)