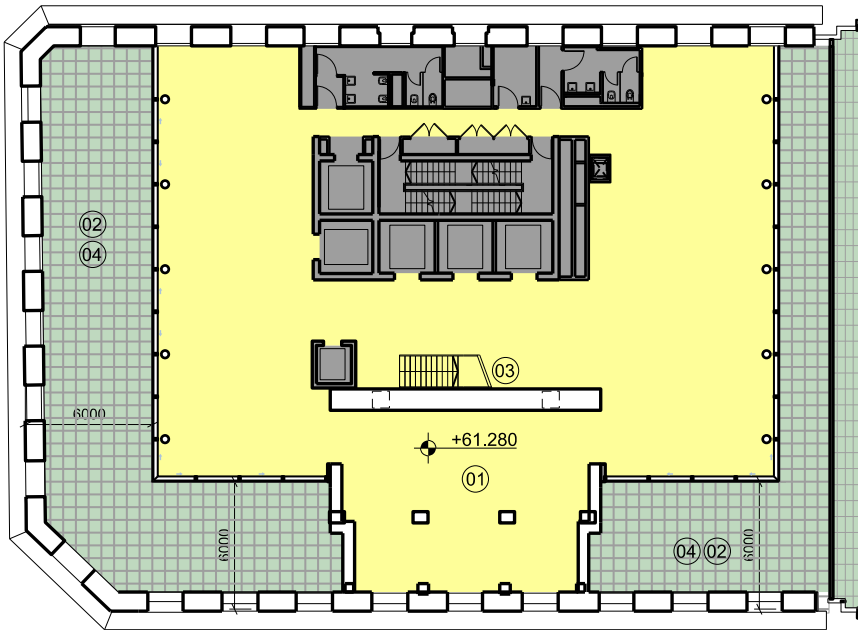


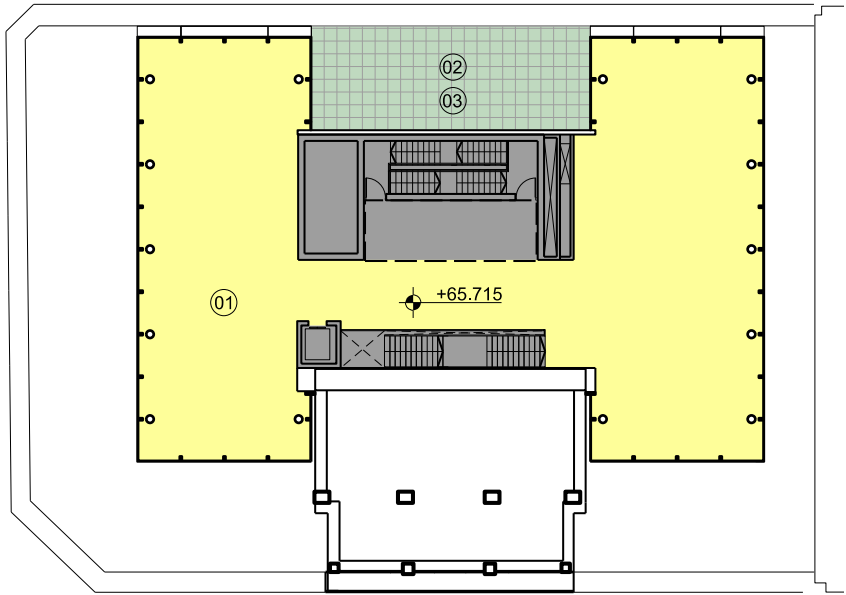
Roof pavilions

Through design development the Shell House roof pavilions have undergone the following key design changes;

- Repositioning of the core. The core has moved further to the east which has provided the opportunity to reintroduce the roof terrace below the clock tower on level 12.
- The two dedicated retail shuttle lifts have been moved location to the south of the core providing the choice of entry from either Margaret Street or Wynyard Lane.

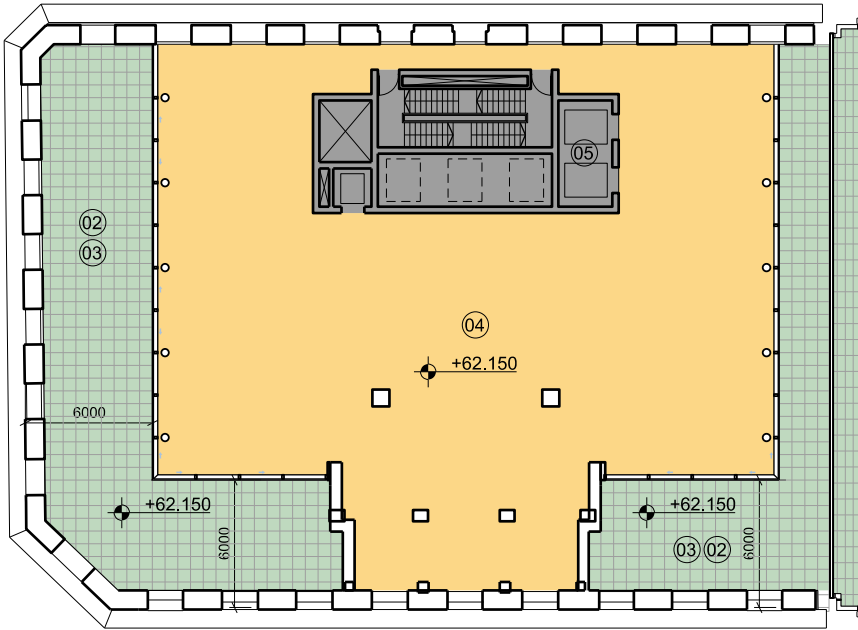
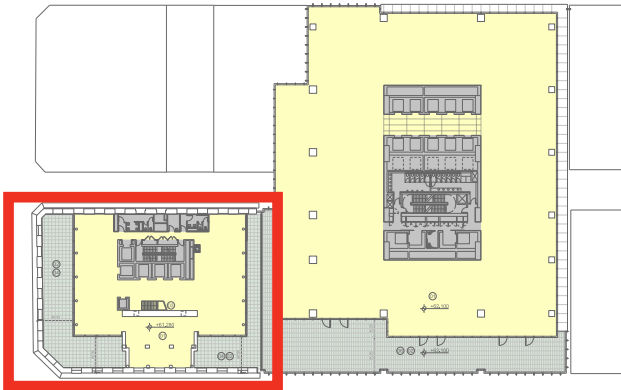


Extract from DA2019 approved - Shell House Level 11

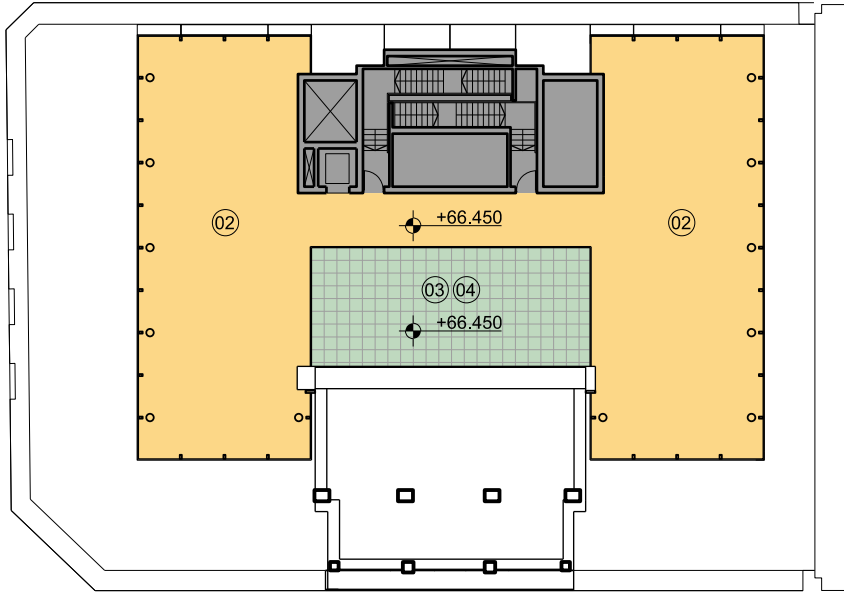


Extract from DA2020 approved - Shell House Level 12

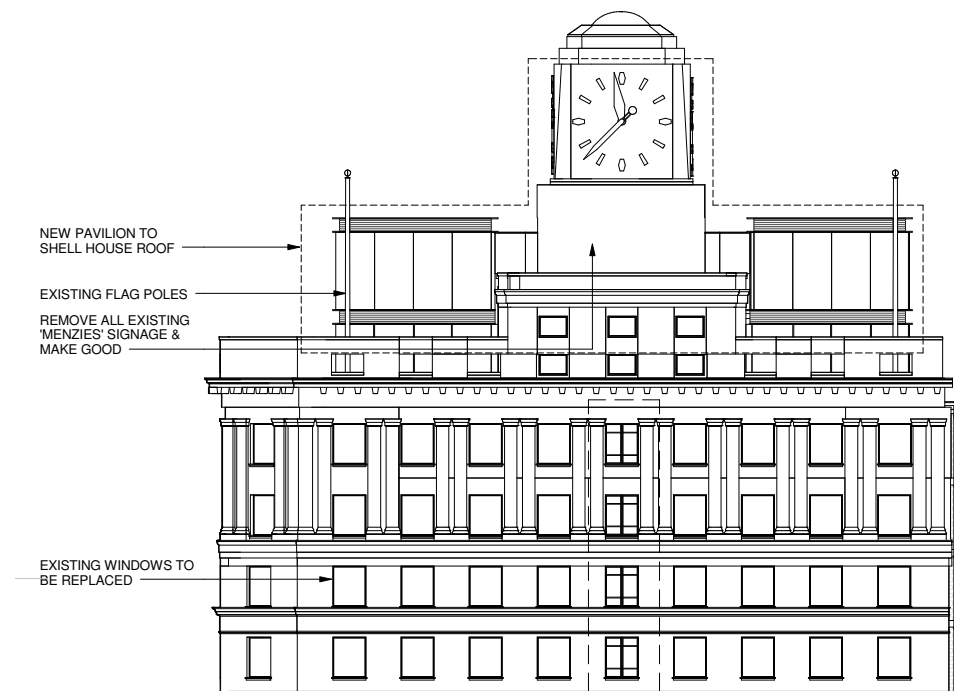
Key plan



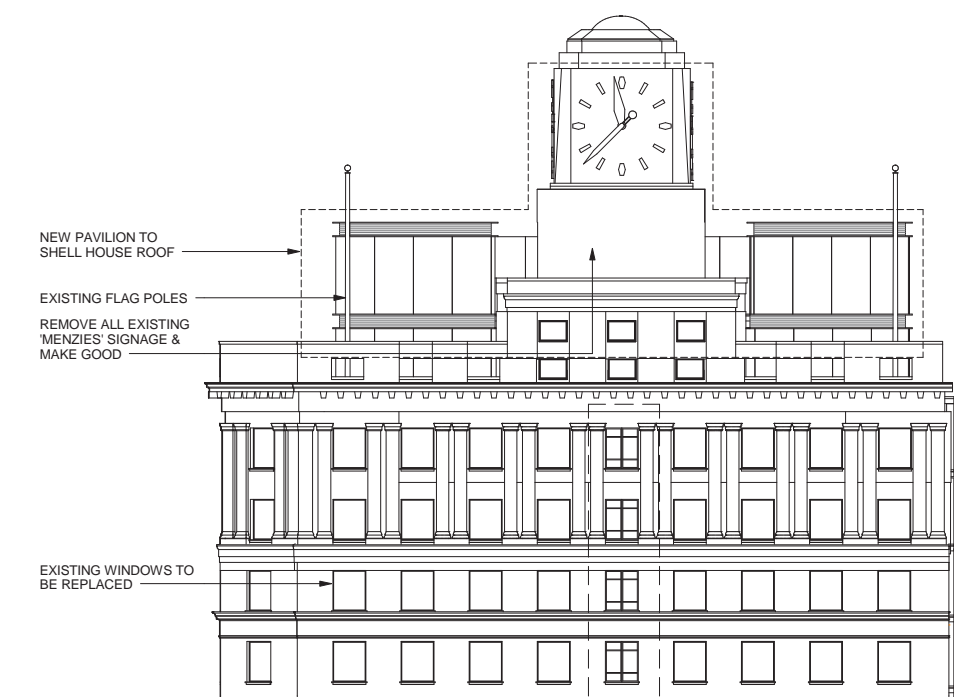
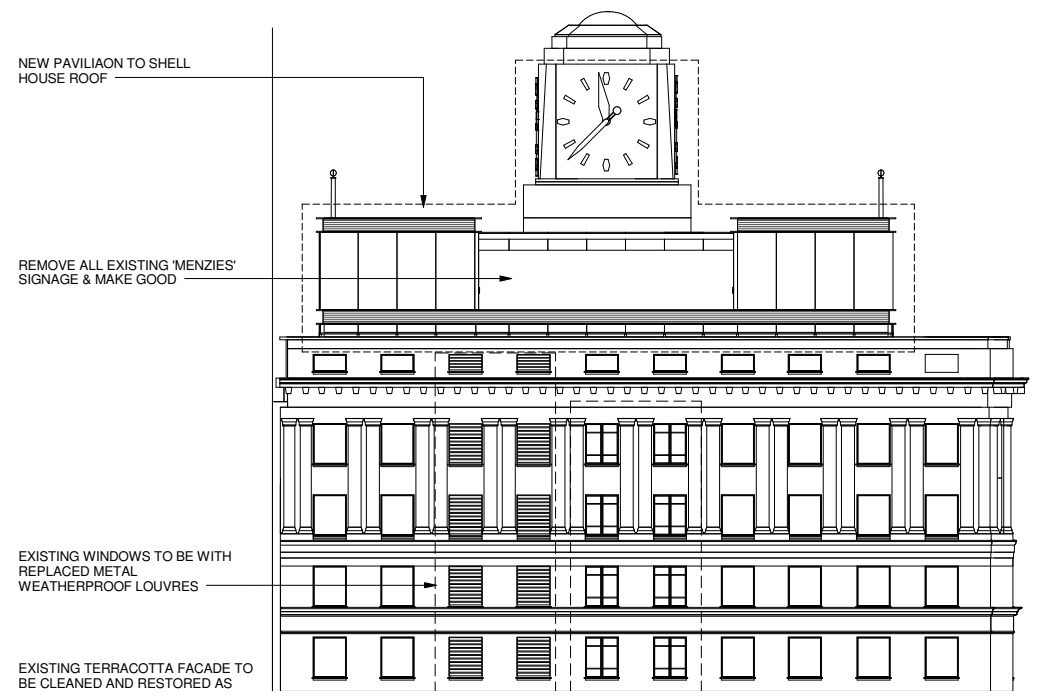
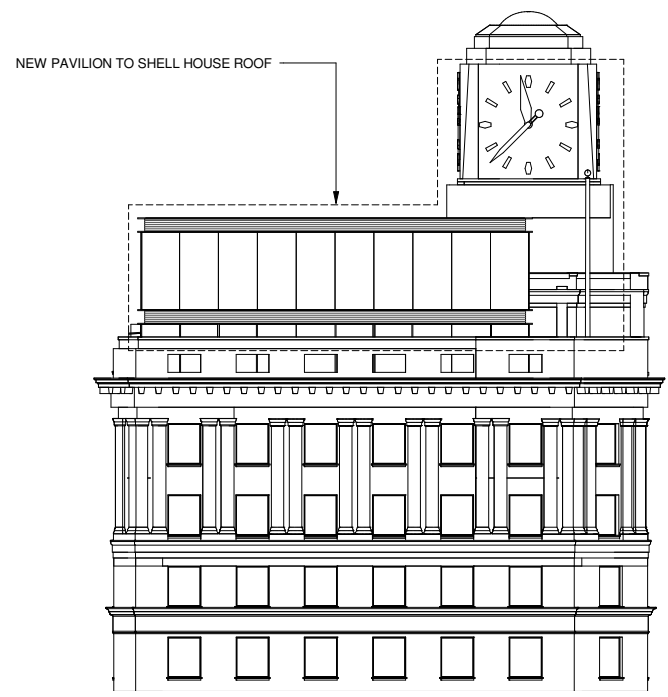
Extract from DA2019 proposed - Shell House Level 11



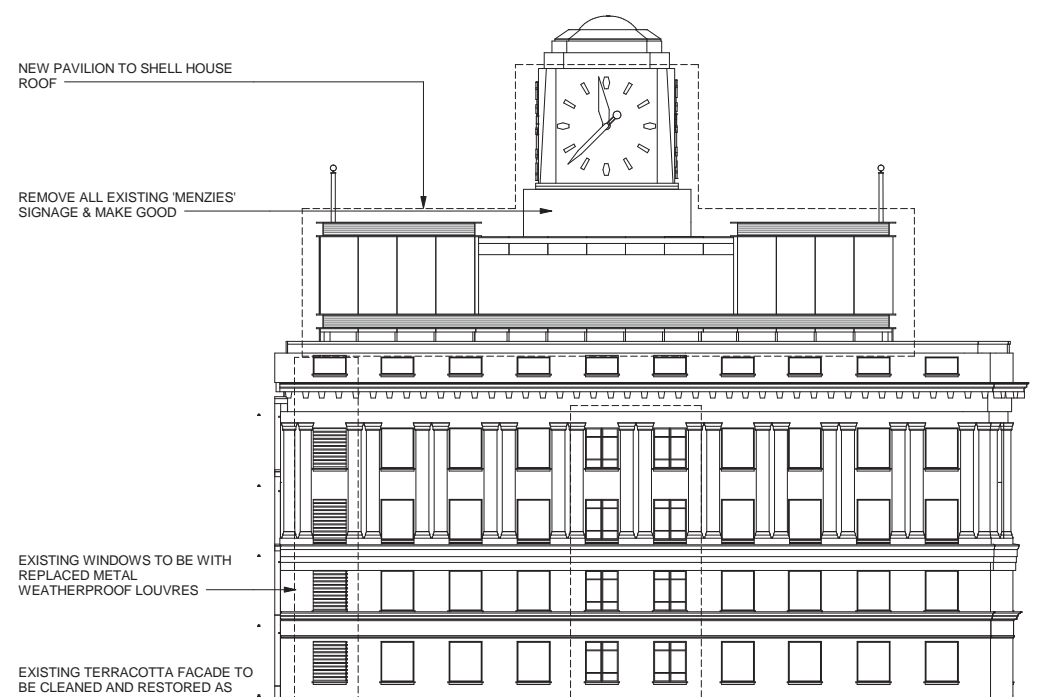
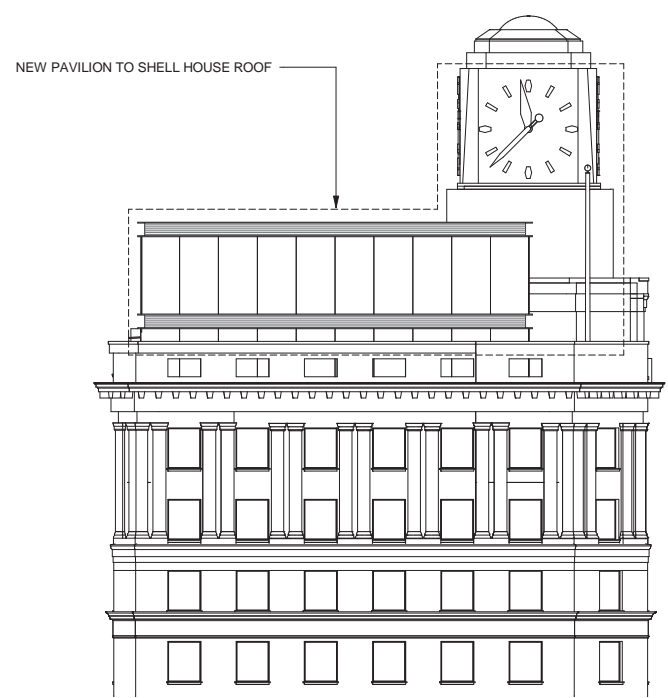
Extract from DA2020 proposed - Shell House Level 12



Extract from DA2300 approved - Shell House Elevations



Extract from DA2300 proposed - Shell House Elevations





Extract from DA9000 approved - Illustrative View 01 York and Margaret Street corner view



Extract from DA9000 proposed - Illustrative View 01 York and Margaret Street corner view

Appendix A

Change comparison table -
07.09.2016

Item No.	Drawing number	Location	Description		Action
	DA2002 (Rev 03)				
01-1		Shell House	Core repositioned		
	DA2003 (Rev 03)				
02-1		Shell House	Core repositioned		
02-2		Shell House	Passenger lift from Shell House no longer serves this level		
	DA2004 (Rev 03)				
03-1		Shell House	Core repositioned		
03-2		Shell House	Passenger lift from Shell House no longer serves this level		
	DA2005 (Rev 03)				
04-1		Shell House	Core repositioned		
04-2		Shell House	Passenger lift from Shell House no longer serves this level		
	DA2006 (Rev 03)				
05-1		Shell House	Plant reconfiguration including the relocation of the 2 x substations		
	DA2007 (Rev 03)				
06-1		Shell House	Retail entrance to the roof pavilion lift lobby has relocated south adjacent to the EOT entrance on Wynyard Lane		
06-2		Shell House	Substation entrance has moved north on Wynyard Lane		
06-3		Shell House	Fire booster cupboard has moved from Wynyard Lane to Margaret Street and will be contained within the Shell House an existing window reveal		
	DA2008 (Rev 03)				
07-1		Shell House	Building core repositioned and moved eastwards (applies to all levels)		
07-2		Shell House	The existing floor level of She House has been partially lowered to provide a level entry from the street to the lobby		
07-3		Shell House	The retail use adjacent to the lobby entrance has been replaced with an enlarged lobby area and potential office use		
07-4		Shell House	Two escalators have been introduced to provide direct access to the Mezzanine Level		
07-5		Shell House	Three new openings are proposed through the existing façade of Shell House utilising the existing window reveals		
07-6		Through site link	The retail units lining the through site link will become part of a single lobby space in order to service the lobby and the through site link		
07-7		Tower	The office lobby entrance has moved west to align with the back of the mega-columns		
07-8		Tower	A new entrance has been created from the through site link into the main office lobby		
07-9		Through site link	A second landing on the slope along the link has been introduced to provide increased opportunity for direct access into the retail unit and lobby		

Item No.	Drawing number	Location	Description		Action
	DA2009 (Rev 03)				
08-1		Shell House	Void introduced to accommodate the escalators		
08-2		Through site link	The retail mezzanine level has been remove to provide a double height expression		
	DA2010 (Rev 03)				
09-1		Shell House	Void introduced to accommodate the escalators		
09-2		Tower	Relocation of plant to level 01		
09-3		Tower	Activation of the eastern terrace fronting George Street		
09-4		Tower	Introduction of a void above the retail and lobby at Carrington Street below		
09-5		Tower	The glazing line on the western terrace fronting Carrington Street has moved west to align with the back of the mega column		
	DA2011 (Rev 03)				
10-1		Tower	Plant room introduced on the eastern portion of the floor plate		
10-2		Tower	The eastern faced has been moved west to align with the terrace glazing line below to provide a double height terrace expression		
10-3		Tower	Introduction of a void above the retail and lobby at Carrington Street below		
10-4		Tower	The western faced has been moved east to align with the terrace glazing line below to provide a double height terrace expression		
	DA2020 (Rev 03)				
11-1		Shell House	The massing at Shell House level 12 has been amended to accommodate the relocation of the office core		
	DA2100 (Rev 03)				
12-1		Tower	Double height balcony expressed at mezzanine level		
12-2		Tower	Plant moved to level 01 and associated louvers relocated		
	DA2102 (Rev 03)				
13-1		Tower	Double height balcony expressed at mezzanine level		
13-2		Tower	An additional mega column expression has been introduced to the façade		
	Sections - general				
14-1		Shell House	The existing floor levels have been altered to align more closely with the levels of the tower		
14-2		Tower	The floor levels have been altered to align more closely with the levels of Shell House		

