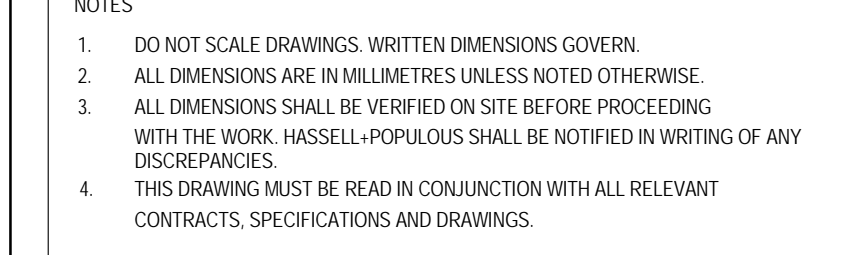



FOR APPROVAL



THIS DRAWING IS AN UNCONTROLLED COPY, UNLESS NOTED OTHERWISE.

[illegible]


HASSELL+POPOLOUS[®]
HASSELL + POPOLOUS PTY LTD ABN 3416797317
LEVEL 2, PIER 8/9
23 HICKSON ROAD
SYDNEY NSW 2000 AUSTRALIA
T +61 2 9101 2000 F +61 2 9101 2100



STRUCTURAL SERVICES
LEVEL 5, 9 CASTLEREAGH ST, SYDNEY
NSW 2000
02 8246 3200

AECOM
BUILDING / ENVIRONMENTAL SERVICES
LEVEL 21, 420 GEORGE ST, SYDNEY
NSW 2000

(02) 8934 0000

 **HYDRAULIC SERVICES**
LEVEL 2, 9/24 HICKSON RD, MILLERS POINT

CJ FORMS & ASSOCIATES
NSW 2000
02 8036 8370

CIVIL / TRAFFIC SERVICES

Hyder V 5/141 WALKER ST, NORTH SYDNEY
NSW 2060
(02) 8907 9000

CLIENT	
--------	--

 **LEND LEASE BUILDING PTY LTD**
LEVEL 4, THE BOND, 30 HICKSON RD
MILLERS POINT, NSW 2000
(02) 9236 6111

PROJECT _____

SICEEP DARLING HARBOUR

THE THEATRE

THE THEATRE

DRAWING TITLE

GA PLANS - UPPER FOYER

LEVEL 6

RL 27.7

STATUS

SECTION 96

SCALE @ A0 / 50% @ A2	DRAWN	CO-ORD	REVIEWED	APPROV
1:250	DU	DU	MB	MB

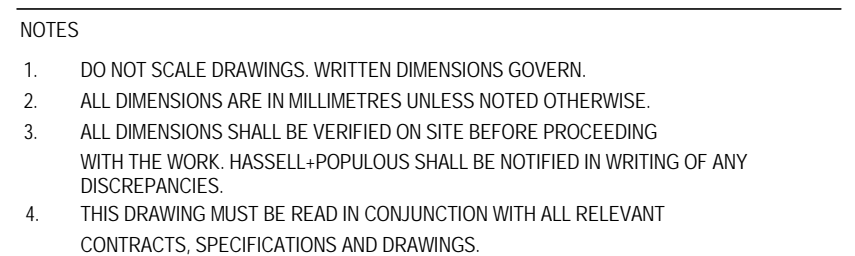
1:250	RA	RA	MR	MR
-------	----	----	----	----

PROJECT NUMBER	DRAWING NUMBER	REV
003688	TH AP D 306000	B

Original Sheet Size A0 - 1189 x 841


12/4/2013 3:50:42 PM C:\Real Projects\002988 TH AR BB ext robium

FOR APPROVAL



[illegible]

HASSELL+POPULOUS[®]
HASSELL + POPULOUS PTY LTD ABN 3416179317
LEVEL 2, PIER 8/9
23 HICKSON ROAD
SYDNEY NSW 2000 AUSTRALIA
T +61 2 9101 2000 F+61 2 9101 2100



STRUCTURAL SERVICES
LEVEL 5, 9 CASTLEREAGH ST, SYDNEY
NSW 2000
02 8246 3200

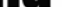
AECOM BUILDING / ENVIRONMENTAL SERVICES
LEVEL 21, 420 GEORGE ST, SYDNEY
NSW 2000

HYDRAULIC SERVICES
LEVEL 2, 9 24 HICKSON RD, MILLERS POINT

CIVIL / TRAFFIC SERVICES

Hyder V 5/141 WALKER ST, NORTH SYDNEY
NSW 2060
(02) 8907 9000

CLIENT _____

 **LEND LEASE BUILDING PTY LTD**
LEVEL 4, THE BOND, 30 HICKSON RD
MILLERS POINT, NSW 2000
(02) 9236 6111

PROJECT

SICEEP DARLING HARBOUR

THE THEATRE

THE THEATRE

DRAWING TITLE

GA PLANS - UPPER TIER - FOYER

PLANT

LEVEL 7

RL 33.1

STATUS

SECTION 96

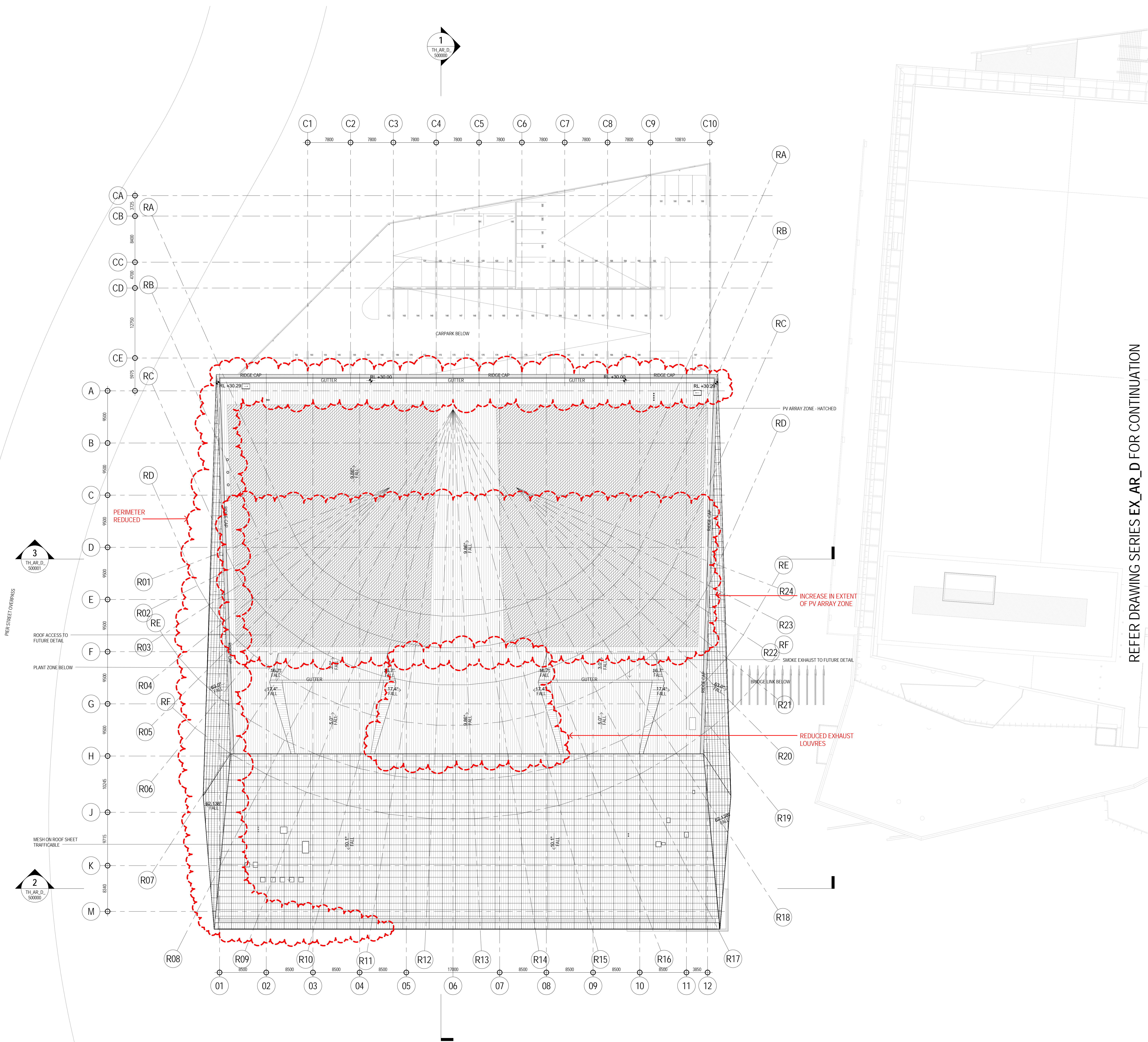
SCALE @ A0 / 50% @ A2	DRAWN	CO-ORD	REVIEWED	APPROVED
1 : 250	DL	DL	MD	MD

PROJECT NUMBER	DRAWING NUMBER	REV
----------------	----------------	-----

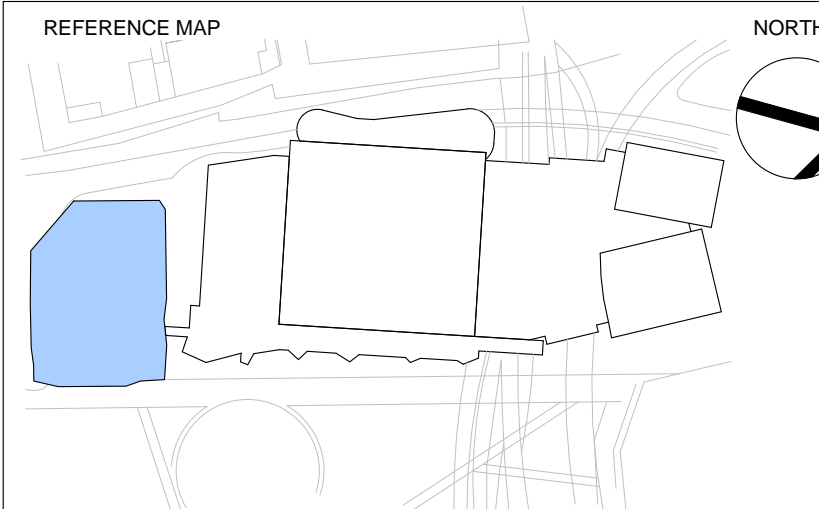
PROJECT NUMBER	DRAWING NUMBER	REV
003688	TH AR D 207000	B

Original Sheet Size A0 - 1189 x 841mm

Original Sheet Size A0 -1189 x 841mm



REFER DRAWING SERIES EX_AR_D FOR CONTINUATION



0 5 10 20m
1:250

- NOTES
1. DO NOT SCALE DRAWINGS. WRITTEN DIMENSIONS GOVERN.
 2. ALL DIMENSIONS ARE IN MILLIMETRES UNLESS NOTED OTHERWISE.
 3. ALL DIMENSIONS SHALL BE VERIFIED ON SITE BEFORE PROCEEDING WITH THE WORK. HASSELL+POPULOUS SHALL BE NOTIFIED IN WRITING OF ANY DISCREPANCIES.
 4. THIS DRAWING MUST BE READ IN CONJUNCTION WITH ALL RELEVANT CONTRACTS, SPECIFICATIONS AND DRAWINGS.

© COPYRIGHT OF THIS DRAWING IS VESTED IN HASSELL+POPULOUS.
2013 HASSELL+POPULOUS PTY LTD

THIS DRAWING IS AN UNCONTROLLED COPY, UNLESS NOTED OTHERWISE.

REV	DESCRIPTION	DATE
1	ISSUED FOR INFORMATION	09.05.13
2	ISSUED FOR INFORMATION	24.05.13
3	ISSUED FOR INFORMATION	30.05.13
4	ISSUED FOR INFORMATION	07.06.13
A	ISSUED FOR DEVELOPMENT APPLICATION	24.06.13
5	ISSUED FOR INFORMATION	26.06.13
6	ISSUED FOR DS1	11.07.13
7	ISSUED FOR DS1	24.07.13
8	ISSUED FOR INFORMATION	06.08.13
9	ISSUED FOR INFORMATION	20.08.13
10	ISSUED FOR INFORMATION	27.08.13
11	ISSUED FOR INFORMATION	05.09.13
12	ISSUED FOR INFORMATION	24.09.13
13	ISSUED FOR INFORMATION	08.10.13
14	ISSUED FOR INFORMATION	22.10.13
15	ISSUED/FREEZE FOR SERVICES TENDER	11.11.13
B	ISSUED FOR SECTION 96 APPLICATION	04.12.13

ARCHITECT - PRINCIPAL DESIGN CONSULTANT

HASSELL+POPULOUS
HASSELL + POPULOUS PTY LTD ABN 349197937
LEVEL 2, PIER 8/9
23 HICKSON ROAD
SYDNEY NSW 2000 AUSTRALIA
T +61 2 9101 2000 F +61 2 9101 2100

CONSULTANTS

Robert Bird Group
STRUCTURAL SERVICES
LEVEL 5, 9 CASTLEREAGH ST, SYDNEY
NSW 2000
(02) 8246 3000

AECOM
BUILDING / ENVIRONMENTAL SERVICES
LEVEL 21, 400 GEORGE ST, SYDNEY
NSW 2000
(02) 8334 0000

C.J. ARMSTRONG
HYDRAULIC SERVICES
LEVEL 2, 9-24 HICKSON RD, MILLERS POINT
NSW 2000
(02) 8036 8370

Hyder
CIVIL / TRAFFIC SERVICES
5/141 WALKER ST, NORTH SYDNEY
NSW 2060
(02) 8907 9000

CLIENT

Lend Lease
LEND LEASE BUILDING PTY LTD
LEVEL 4, THE BOND, 30 HICKSON RD
MILLERS POINT, NSW 2000
(02) 9236 6111

PROJECT

**SICEEP, DARLING HARBOUR
THE THEATRE**

DRAWING TITLE

GA PLANTS - ROOF SCREEN

LEVEL 8

RL 44.0

STATUS

SECTION 96

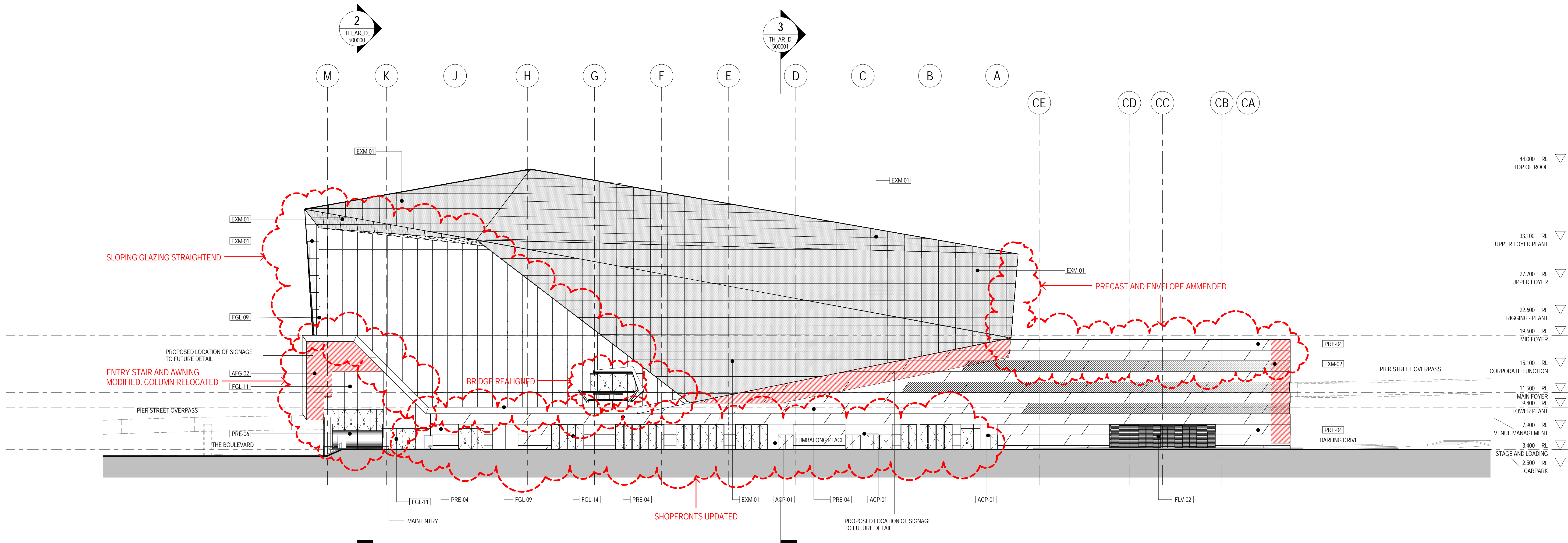
SCALE @ A0: 1/50% @ A2: 1:250
DRAWN: RH CO-ORD: RH REVIEWED: MR APPROVED: MR

PROJECT NUMBER: 003688 DRAWING NUMBER: TH_AR_D_208000 REV: B

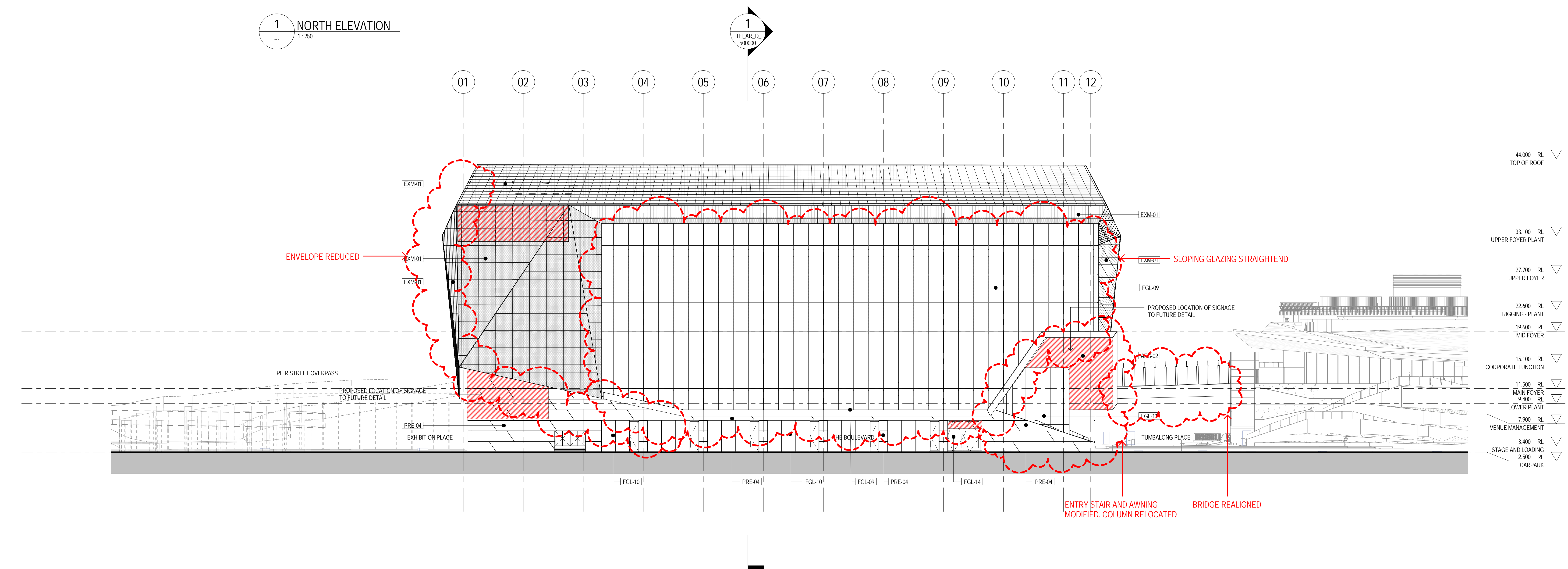
FOR APPROVAL

C:_Revit\Projects\003688\TH_AR_BB.dwg, 03/04/14 12/02/2013 3:53:39 PM

Original Sheet Size A0 - 1189 x 841mm



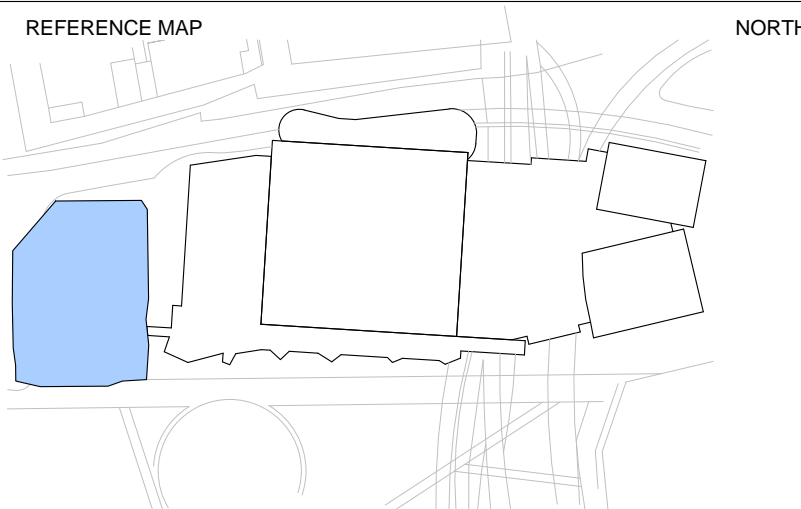
1 NORTH ELEVATION
1:250



2 EAST ELEVATION
1:250

SIGNAGE ZONE	PRECAST	CONCRETE	FACADE SYSTEMS	FACADE GLAZING	FACADE LOUVRES	FACADE / ROOF SCREENS	FACADE / SOFFITS	FACADE TRIMS & CAPPINGS	ROOFING
<div></div> Proposed Signage To Future Detail	<div>[PRE-01]</div> Precast Panel <div>[PRE-04]</div> Precast Flat Panel <div>[PRE-05]</div> Precast Slab Panel ***To be Confirmed*** <div>[PRE-06]</div> Precast Slab Edge <div>[PRE-07]</div> Precast Enclosure	<div>[CON-01]</div> Off Form Concrete - Class 2 BLOCKWORK <div>[BLK-01]</div> Concrete Face Blockwork	<div>[ACP-01]</div> Composite Aluminium Panel (Cassette) <div>[MIP-01]</div> Metal Facet Insulated Panel - Large Vertical Panel <div>[MIP-03]</div> Metal Facet Insulated Panel - Vertical Panel Blade (Acoustic) <div>[MIP-04]</div> Metal Facet Insulated Panel - Vertical Panel Blade <div>[LPC-01]</div> Porcelain Panel Cladding - Rainscreen	<div>[FGL-01]</div> Glazing Assembly 1 - Curtain Wall <div>[FGL-02]</div> Glazing Assembly 2 - Curtain Wall <div>[FGL-03]</div> Glazing Assembly 3 - Shopfront <div>[FGL-04]</div> Glazing Assembly 4 - Ballroom <div>[FGL-05]</div> Glazing Assembly 5 - Existing East Facade ICC <div>[FGL-06]</div>	<div>[FLV-02]</div> Class A Weatherproof Louvers - Concealed Frame	<div>[AFG-01]</div> Aluminium Flat Bar Grille <div>[AFG-02]</div> Aluminium Flat Bar Grille - Horizontal <div>[EXM-01]</div> Expanded Mesh Screen <div>[EXM-02]</div> Expanded Mesh Screen	<div>[ACP-02]</div> Composite Aluminium Panel - Soffit <div>[CFC-01]</div> Compressed Fibre Cement Sheet Soffit <div>[LPC-02]</div> Porcelain Panel Cladding - Soffit	<div>[FCT-01]</div> Composite Aluminium Panel Capping <div>[FCT-04]</div> Colourbond Façade Flashing	<div>[RFS-01]</div> Metal Roof Sheeting <div>[RFS-02]</div> Metal Roof Sheeting <div>[RFS-04]</div> Re-Roofing (Parkade)

FOR APPROVAL



0 5 10 20m
1:250

- NOTES
- DO NOT SCALE DRAWINGS. WRITTEN DIMENSIONS GOVERN.
 - ALL DIMENSIONS ARE IN MILLIMETRES UNLESS NOTED OTHERWISE.
 - ALL DIMENSIONS SHALL BE VERIFIED ON SITE BEFORE PROCEEDING WITH THE WORK. HASSELL+POPULOUS SHALL BE NOTIFIED IN WRITING OF ANY DISCREPANCIES.
 - THIS DRAWING MUST BE READ IN CONJUNCTION WITH ALL RELEVANT CONTRACTS, SPECIFICATIONS AND DRAWINGS.

© COPYRIGHT OF THIS DRAWING IS VESTED IN HASSELL+POPULOUS.
2013 HASSELL+POPULOUS PTY LTD

THIS DRAWING IS AN UNCONTROLLED COPY, UNLESS NOTED OTHERWISE.

REV	DESCRIPTION	DATE
1	ISSUED FOR INFORMATION	24.05.13
2	ISSUED FOR INFORMATION	30.05.13
3	ISSUED FOR INFORMATION	07.06.13
A	ISSUED FOR DEVELOPMENT APPLICATION	24.06.13
4	ISSUED FOR INFORMATION	26.06.13
5	ISSUED FOR DS1	11.07.13
6	ISSUED FOR DS1	24.07.13
7	ISSUED FOR INFORMATION	06.08.13
8	ISSUED FOR INFORMATION	20.08.13
9	ISSUED FOR INFORMATION	27.08.13
10	ISSUED FOR INFORMATION	05.09.13
11	ISSUED FOR INFORMATION	24.09.13
12	ISSUED FOR INFORMATION	08.10.13
13	ISSUED FOR INFORMATION	22.10.13
14	ISSUED-PREIZE FOR SERVICES TENDER	11.11.13
B	ISSUED FOR SECTION 96 APPLICATION	04.12.13

ARCHITECT - PRINCIPAL DESIGN CONSULTANT

HASSELL+POPULOUS
HASSELL + POPULOUS PTY LTD ABN 341619737
23 HICKSON ROAD
SYDNEY NSW 2000 AUSTRALIA
T +61 2 9101 2000 F +61 2 9101 2100

CONSULTANTS

STRUCTURAL SERVICES
LEVEL 5, 9 CASTLEREAGH ST, SYDNEY
NSW 2000
(02) 8246 3200

BUILDING / ENVIRONMENTAL SERVICES
LEVEL 21, 420 GEORGE ST, SYDNEY
NSW 2000
(02) 8534 0000

HYDRAULIC SERVICES
LEVEL 2, 9-24 HICKSON RD, MILLERS POINT
NSW 2000
(02) 8036 8370

CIVIL / TRAFFIC SERVICES
5/141 WALKER ST, NORTH SYDNEY
NSW 2060
(02) 8907 9000

CLIENT

Lend Lease
LEND LEASE BUILDING PTY LTD
LEVEL 4, THE BOND, 30 HICKSON RD
MILLERS POINT, NSW 2000
(02) 9236 6111

PROJECT

**SICEEP DARLING HARBOUR
THE THEATRE**

DRAWING TITLE

ELEVATIONS

STATUS

SECTION 96

SCALE @ A0 / 50% @ A2

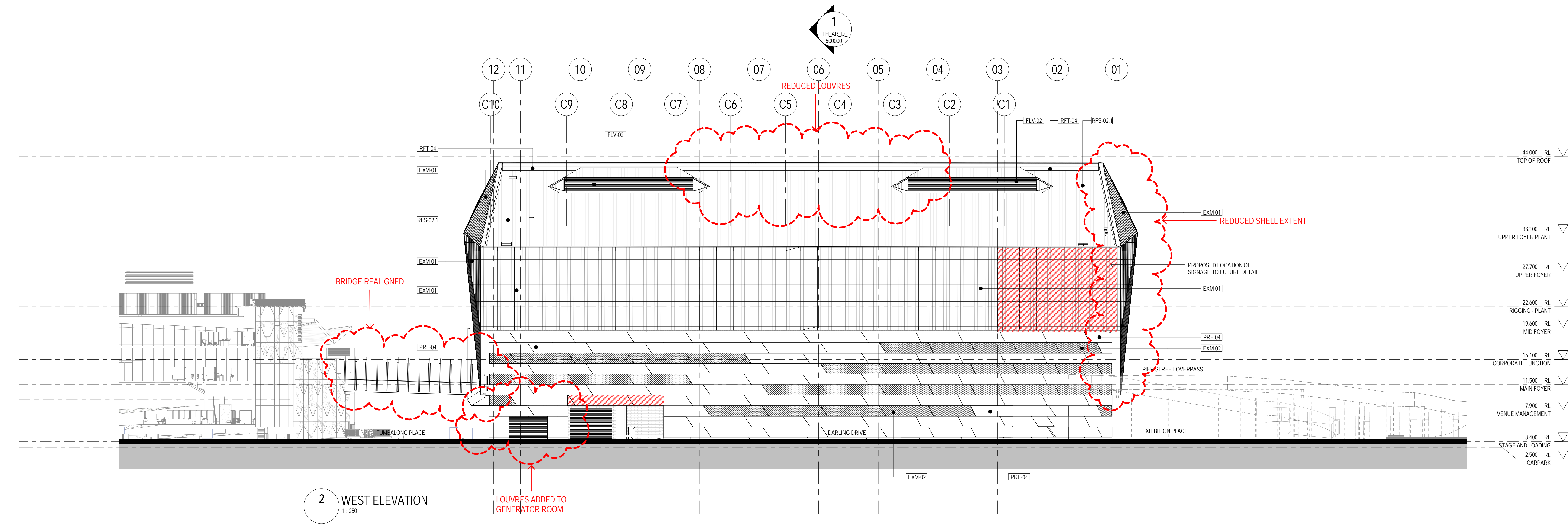
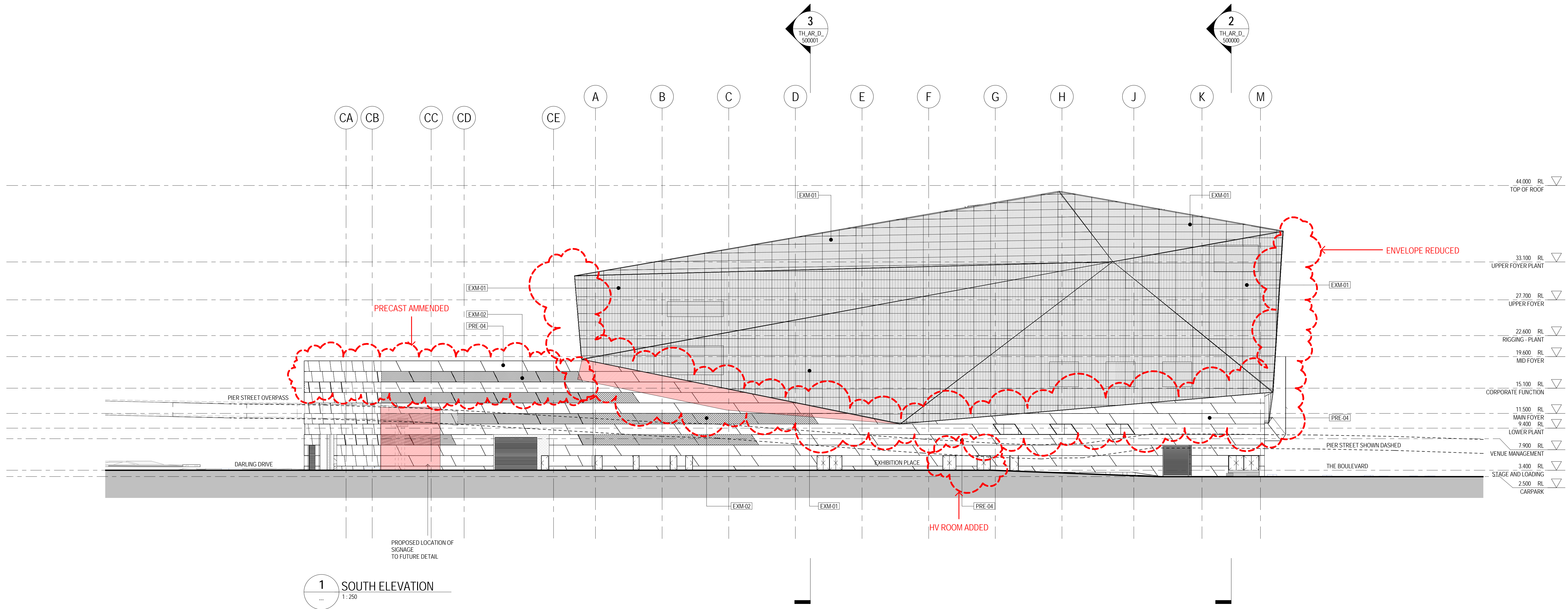
1:250

PROJECT NUMBER 003688

DRAWING NUMBER TH_AR_D_410000

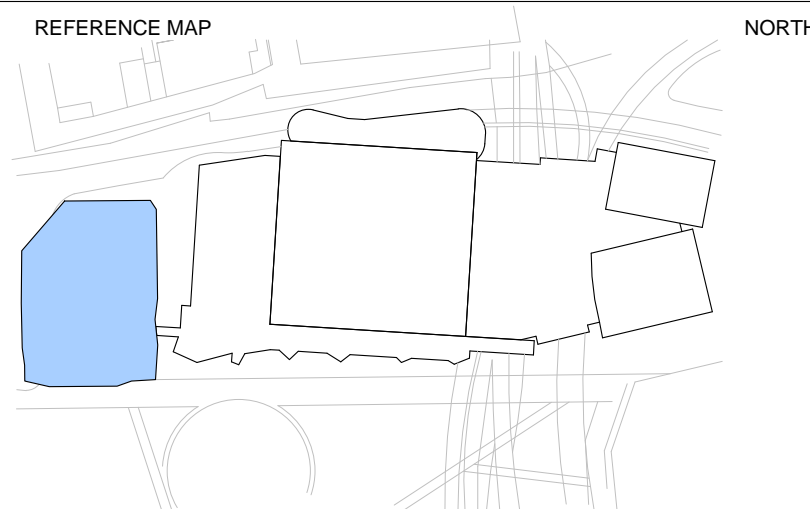
REV B

C:_Revit\Projects\003688\TH_AR_B0.dwg, 08/04/14 12:05:54 PM



SIGNAGE ZONE	PRECAST	CONCRETE	FACADE SYSTEMS	FACADE GLAZING	FACADE LOUVRES	FACADE / ROOF SCREENS	FACADE / SOFFITS	FACADE TRIMS & CAPPINGS	ROOFING
<div></div> Proposed Signage To Future Detail	<div>PRE-01</div> Precast Panel <div>PRE-04</div> Precast Flat Panel <div>PRE-05</div> Precast Slab Panel ***To be Confirmed*** <div>PRE-06</div> Precast Slab Edge <div>PRE-07</div> Precast Enclosure	<div>CON-01</div> Off Form Concrete - Class 2 <div>BLK-01</div> Concrete Face Blockwork	<div>ACP-01</div> Composite Aluminium Panel (Cassette) <div>MP-01</div> Metal Facad Insulated Panel - Large Vertical Panel <div>MP-03</div> Metal Facad Insulated Panel - Vertical Panel Blade (Acoustic) <div>MP-04</div> Metal Facad Insulated Panel - Vertical Panel Blade <div>LPC-01</div> Porcelain Panel Cladding - Rainscreen	<div>FGL-01</div> Glazing Assembly 1 - Curtain Wall <div>FGL-02</div> Glazing Assembly 2 - Curtain Wall <div>FGL-03</div> Glazing Assembly 3 - Shopfront <div>FGL-04</div> Glazing Assembly 4 - Balcony <div>FGL-05</div> Glazing Assembly 5 - Existing East Facade ICC <div>FGL-06</div> Glazing Assembly 6 - Existing East Facade ICC	<div>FLV-01</div> Class A Weatherproof Louvers - Concealed Frame	<div>AFS-01</div> Aluminium Flat Bar Grille <div>AFS-02</div> Aluminium Flat Bar Grille - Horizontal <div>EXM-01</div> Expanded Mesh Screen <div>EXM-02</div> Expanded Mesh Screen	<div>ACP-02</div> Composite Aluminium Panel - Soffits <div>CFC-01</div> Compressed Fibre Cement Sheet Soffit <div>LPC-02</div> Porcelain Panel Cladding - Soffit	<div>FCT-01</div> Composite Aluminium Panel Capping <div>FCT-04</div> Colourbond Façade Flashing	<div>RFS-01</div> Metal Roof Sheeting <div>RFS-02</div> Metal Roof Sheeting <div>RFS-04</div> Re-Roofing (Parasole)

FOR APPROVAL



- NOTES
- DO NOT SCALE DRAWINGS. WRITTEN DIMENSIONS GOVERN.
 - ALL DIMENSIONS ARE IN MILLIMETRES UNLESS NOTED OTHERWISE.
 - ALL DIMENSIONS SHALL BE VERIFIED ON SITE BEFORE PROCEEDING WITH THE WORK. HASSELL+POPULOUS SHALL BE NOTIFIED IN WRITING OF ANY DISCREPANCIES.
 - THIS DRAWING MUST BE READ IN CONJUNCTION WITH ALL RELEVANT CONTRACTS, SPECIFICATIONS AND DRAWINGS.

© COPYRIGHT OF THIS DRAWING IS VESTED IN HASSELL+POPULOUS. 2013 HASSELL+POPULOUS PTY LTD

THIS DRAWING IS AN UNCONTROLLED COPY, UNLESS NOTED OTHERWISE.

REV	DESCRIPTION	DATE
1	ISSUED FOR INFORMATION	24.05.13
2	ISSUED FOR INFORMATION	30.05.13
3	ISSUED FOR INFORMATION	07.06.13
A	ISSUED FOR DEVELOPMENT APPLICATION	24.06.13
4	ISSUED FOR INFORMATION	26.06.13
5	ISSUED FOR DS1	11.07.13
6	ISSUED FOR DS1	24.07.13
7	ISSUED FOR INFORMATION	06.08.13
8	ISSUED FOR INFORMATION	20.08.13
9	ISSUED FOR INFORMATION	27.08.13
10	ISSUED FOR INFORMATION	05.09.13
11	ISSUED FOR INFORMATION	24.09.13
12	ISSUED FOR INFORMATION	08.10.13
13	ISSUED FOR INFORMATION	22.10.13
14	ISSUED-PREIZE FOR SERVICES TENDER	11.11.13
B	ISSUED FOR SECTION 96 APPLICATION	04.12.13

ARCHITECT - PRINCIPAL DESIGN CONSULTANT

HASSELL+POPULOUS
HASSELL + POPULOUS PTY LTD ABL 341619737
LEVEL 2, PIER 8/9
23 HICKSON ROAD
SYDNEY NSW 2000 AUSTRALIA
T +61 2 9101 2000 F +61 2 9101 2100

CONSULTANTS

Robert Bird Group
STRUCTURAL SERVICES
LEVEL 5, 9 CASTLEREAGH ST, SYDNEY
NSW 2000
(02) 9246 3000

AECOM
BUILDING / ENVIRONMENTAL SERVICES
LEVEL 21, 400 GEORGE ST, SYDNEY
NSW 2000
(02) 8934 0000

ARMIS
HYDRAULIC SERVICES
LEVEL 2, 9-24 HICKSON RD, MILLERS POINT
NSW 2000
(02) 8036 8370

Hyder
CIVIL / TRAFFIC SERVICES
5/141 WALAKER ST, NORTH SYDNEY
NSW 2060
(02) 8907 9000

CLIENT

Lend Lease
LEND LEASE BUILDING PTY LTD
LEVEL 4, THE BOND, 30 HICKSON RD
MILLERS POINT, NSW 2000
(02) 9236 6111

PROJECT

**SICEEP DARLING HARBOUR
THE THEATRE**

DRAWING TITLE

ELEVATIONS

STATUS

SECTION 96

SCALE @ A0 / 50% @ A2

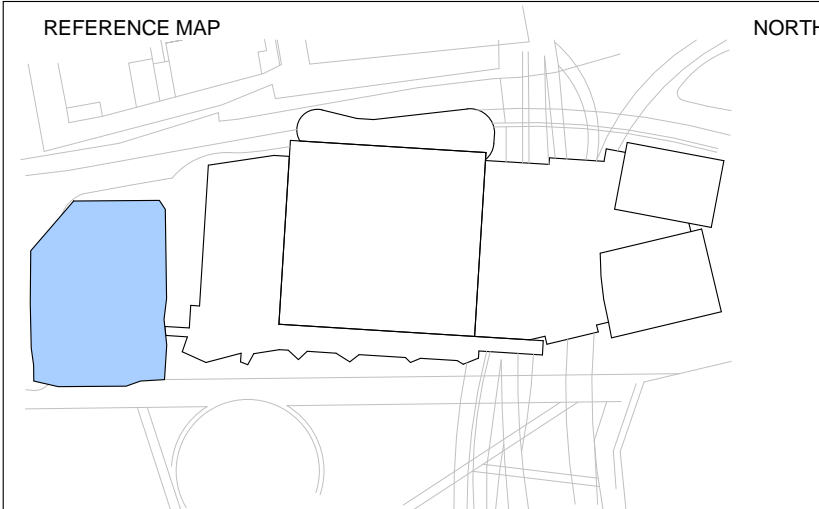
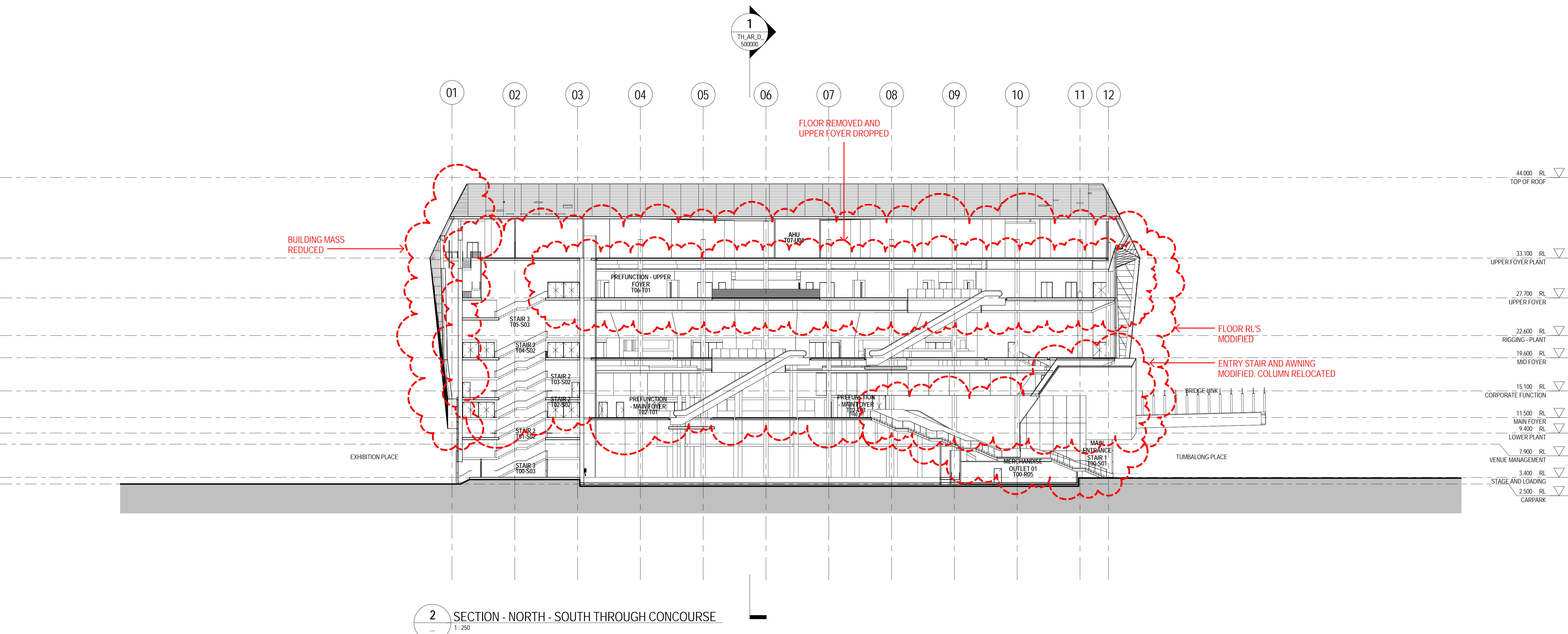
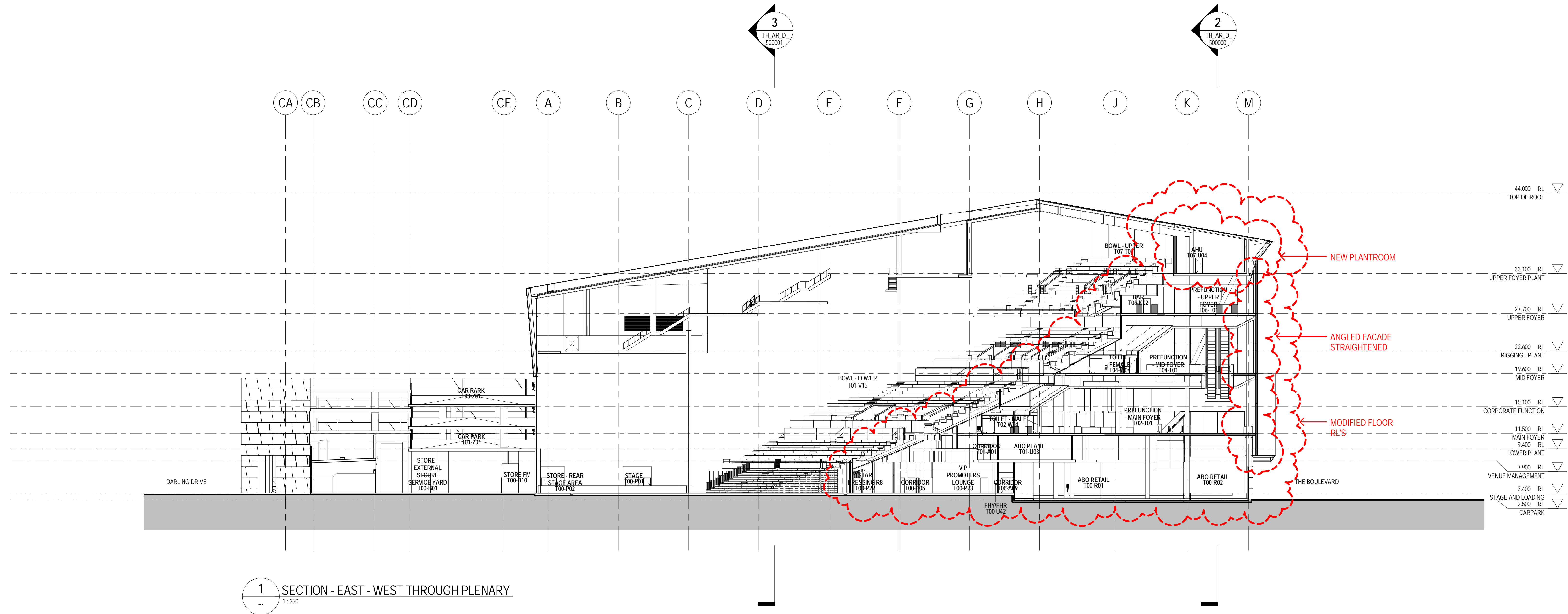
1:250

PROJECT NUMBER 003688

DRAWING NUMBER TH_AR_D_420000

REV B

C:_Raint\Projects\003688_TH_AR_B0.dwg, 03/04/14 12/06/2013 12:06:55 PM



- NOTES
1. DO NOT SCALE DRAWINGS. WRITTEN DIMENSIONS GOVERN.
 2. ALL DIMENSIONS ARE IN MILLIMETRES UNLESS NOTED OTHERWISE.
 3. ALL DIMENSIONS SHALL BE VERIFIED ON SITE BEFORE PROCEEDING WITH THE WORK. HASSELL+POPULOUS SHALL BE NOTIFIED IN WRITING OF ANY DISCREPANCIES.
 4. THIS DRAWING MUST BE READ IN CONJUNCTION WITH ALL RELEVANT CONTRACTS, SPECIFICATIONS AND DRAWINGS.

© COPYRIGHT OF THIS DRAWING IS VESTED IN HASSELL+POPULOUS.
2013 HASSELL+POPULOUS PTY LTD

THIS DRAWING IS AN UNCONTROLLED COPY, UNLESS NOTED OTHERWISE.

REV	DESCRIPTION	DATE
1	ISSUED FOR INFORMATION	09.05.13
2	ISSUED FOR INFORMATION	24.05.13
3	ISSUED FOR INFORMATION	30.05.13
4	ISSUED FOR INFORMATION	07.06.13
A	ISSUED FOR DEVELOPMENT APPLICATION	24.06.13
5	ISSUED FOR INFORMATION	26.06.13
6	ISSUED FOR DS1	11.07.13
7	ISSUED FOR DS1	24.07.13
8	ISSUED FOR INFORMATION	06.08.13
9	ISSUED FOR INFORMATION	20.08.13
10	ISSUED FOR INFORMATION	27.08.13
11	ISSUED FOR INFORMATION	05.09.13
12	ISSUED FOR INFORMATION	24.09.13
13	ISSUED FOR INFORMATION	08.10.13
14	ISSUED FOR INFORMATION	22.10.13
15	ISSUED/FREEZE FOR SERVICES TENDER	11.11.13
B	ISSUED FOR SECTION 96 APPLICATION	04.12.13

ARCHITECT - PRINCIPAL DESIGN CONSULTANT

HASSELL+POPULOUS

HASSELL + POPULOUS PTY LTD ABN 341679337
LEVEL 2, PIER 8/9
23 HICKSON ROAD
SYDNEY NSW 2000 AUSTRALIA
T +61 2 9101 2000 F +61 2 9101 2100

CONSULTANTS

Robert Bird Group

AECOM

Hyder

STRUCTURAL SERVICES
LEVEL 5, 9 CASTLEREAGH ST, SYDNEY
NSW 2000
(02) 8246 3000

BUILDING / ENVIRONMENTAL SERVICES
LEVEL 21, 420 GEORGE ST, SYDNEY
NSW 2000
(02) 8534 0000

HYDRAULIC SERVICES
LEVEL 2, 9-24 HICKSON RD, MILLERS POINT
NSW 2000
(02) 8036 8370

CIVIL / TRAFFIC SERVICES
5/141 WALAKER ST, NORTH SYDNEY
NSW 2060
(02) 8907 9000

CLIENT

Lend Lease

LEND LEASE BUILDING PTY LTD
LEVEL 4, THE BOND, 30 HICKSON RD
MILLERS POINT, NSW 2000
(02) 9236 6111

PROJECT

**SICEEP DARLING HARBOUR
THE THEATRE**

DRAWING TITLE

SECTIONS

STATUS

SECTION 96

SCALE	BY	DATE	REV	DATE
1:250	RH	RH	MR	MR
PROJECT NUMBER	DRAWING NUMBER	REV		
003688	TH_AR_D_500000	B		

FOR APPROVAL

C:_Revit\Projects\003688_TH_AR_BB_04_03688.rvt

Original Sheet Size A0 - 1189 x 841mm