


NOTE :
CO-ORDINATES ARE ON M.G.A. BASED ON PLANE
DISTANCES CENTRED ABOUT S.S.M.

REV.	DATE	AMENDMENTS
A	18/2/2013	HARRIS STREET PROPERTY AND NOVOTEL LOCATIONS ADDED

COPYRIGHT © RYGATE & COMPANY PTY. LIMITED 2013.
NO PART OF THIS PLAN MAY BE REPRODUCED, COMMUNICATED, STORED IN A RETRIEVAL SYSTEM OR TRANSMITTED IN ANY FORM WITHOUT THE WRITTEN PERMISSION OF THE COPYRIGHT OWNER EXCEPT AS PERMITTED BY THE COPYRIGHT ACT 1968. ANY PERMITTED DOWNLOADING, ELECTRONIC STORAGE, DISPLAY, PRINT, COPY, REPRODUCTION OR COMMUNICATION OF THIS SURVEY SHOULD CONTAIN NO ALTERATION OR ADDITION TO THE ORIGINAL SURVEY.

0 150
REDUCTION RATIO 1:3000 @ A3

DATUM : AUSTRALIAN HEIGHT DATUM
CONTOUR INTERVAL : N/A
ORIGIN OF LEVELS : P.M.55082
R.L.3.288 A.H.D.



Rygate & Company
Pty Limited
P.W. Rygate & West
ABN 61 001 204 897

SURVEYING SINCE 1883

SUBDIVISION | STRATA PLANS | STRATUM SUBDIVISION | LEASE PLANS | TOPOGRAPHIC SURVEYS | GPS SURVEYS | 3D MODELLING | RACECOURSE DESIGN | PROJECT MANAGEMENT | SUN SHADOW DIAGRAMS

SURVEYOR	DRAWN	CHECKED	APPROVED
-	-	-	-

CLIENT	LEND LEASE
LOCALITY	DARLING HARBOUR
L.G.A.	SYDNEY

PLAN			
SHOWING CO-ORDINATES OF CAMERA LOCATIONS ADJOINING SICEEP SITE			
REFERENCE No.	PLAN No.	DATE	SHEET No.
75706		8/2/2013	1
			OF SHEETS

Appendix 2

TAB 1 – NOVOTEL

Novotel Sydney Darling Harbour

Position: P1B

Level: 05

RL: 33.700 (Camera Height)

FOR INFORMATION ONLY

Illustrative designs of built forms in the Haymarket precinct do not form part of this development application (and will be the subject of separate development assessment processes) and is shown for information and broader illustrative purposes.

These images are produced here for view analysis purposes only.

LEGEND:

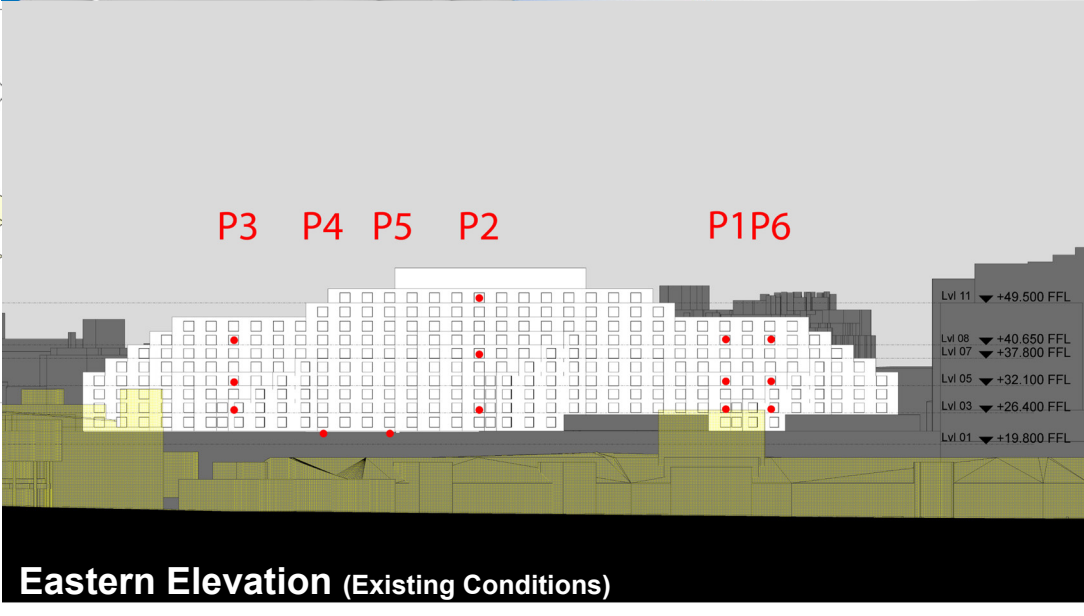
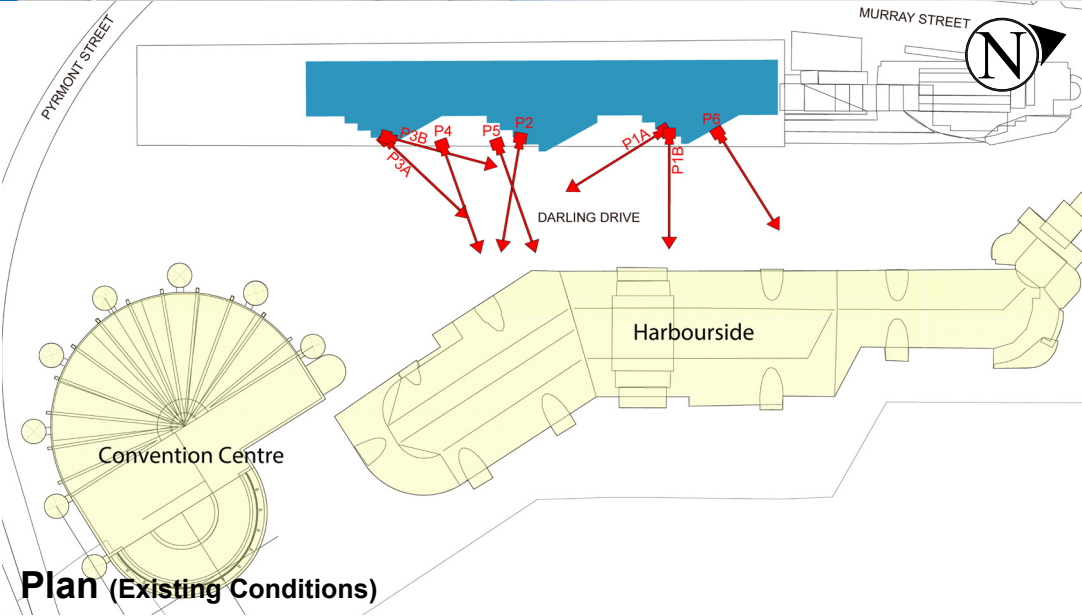
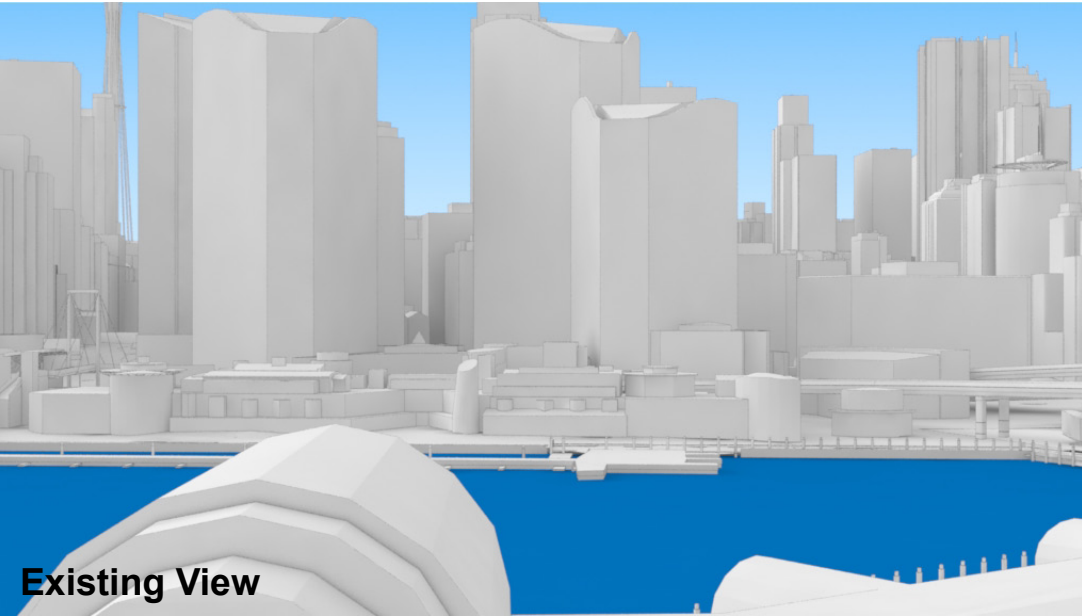
Key Building

Neighbouring Buildings

View Direction (50mm Camera)

Camera Position

5



Novotel Sydney Darling Harbour

Position: P1B

Level: 03

RL: 28.00 (Camera Height)

FOR INFORMATION ONLY

Illustrative designs of built forms in the Haymarket precinct do not form part of this development application (and will be the subject of separate development assessment processes) and is shown for information and broader illustrative purposes.

These images are produced here for view analysis purposes only.

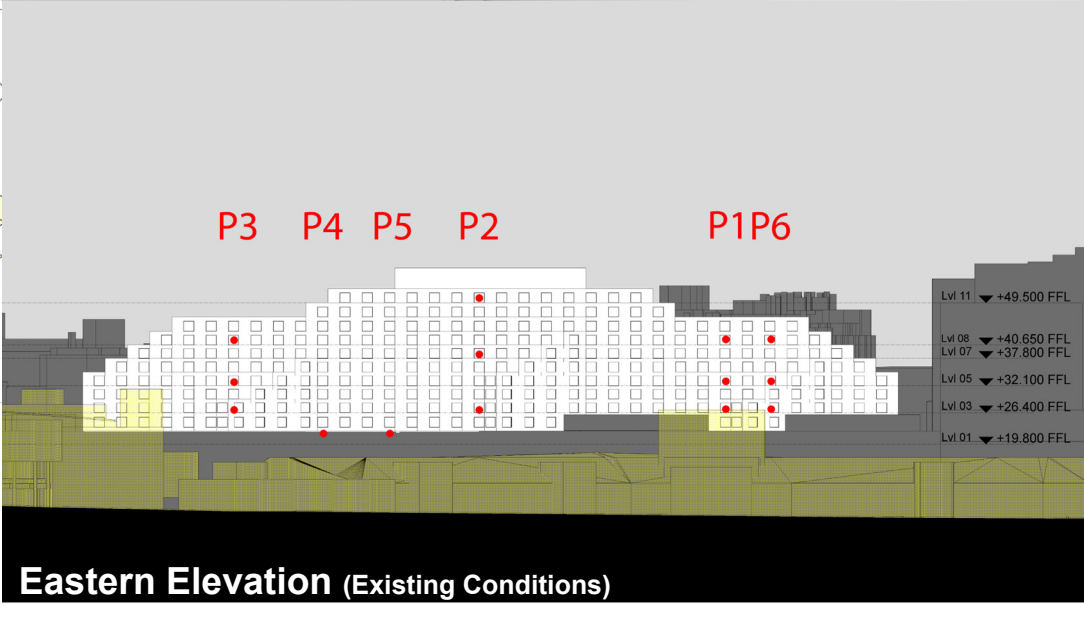
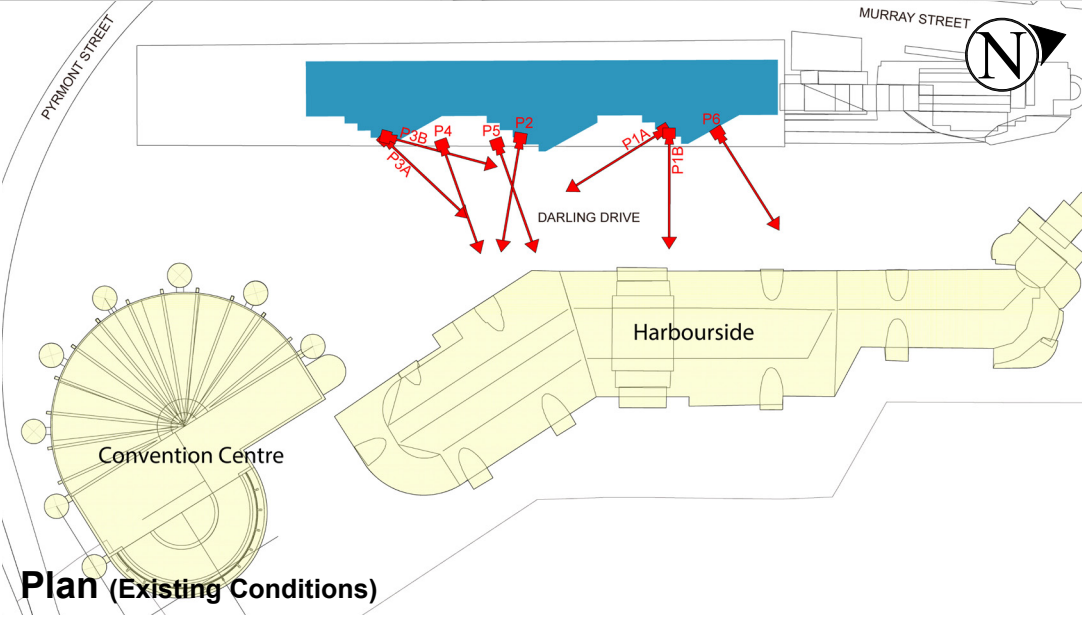
LEGEND:

Key Building

Neighbouring Buildings

View Direction (50mm Camera)

Camera Position



Novotel Sydney Darling Harbour

Position: P2

Level: 11

RL: 51.10 (Camera Height)

FOR INFORMATION ONLY

Illustrative designs of built forms in the Haymarket precinct do not form part of this development application (and will be the subject of separate development assessment processes) and is shown for information and broader illustrative purposes.

These images are produced here for view analysis purposes only.

LEGEND:

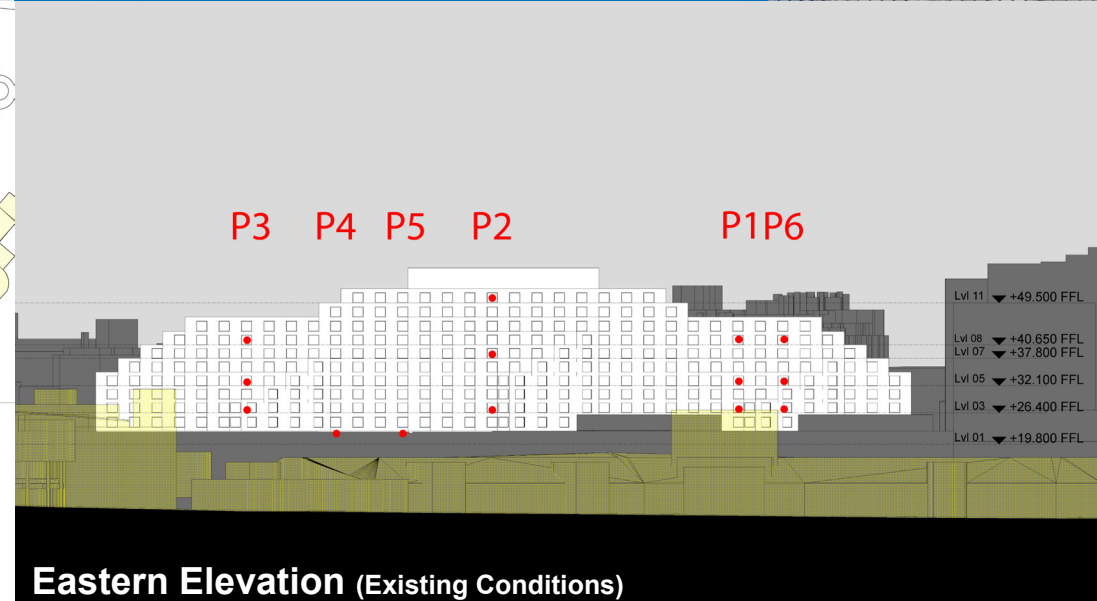
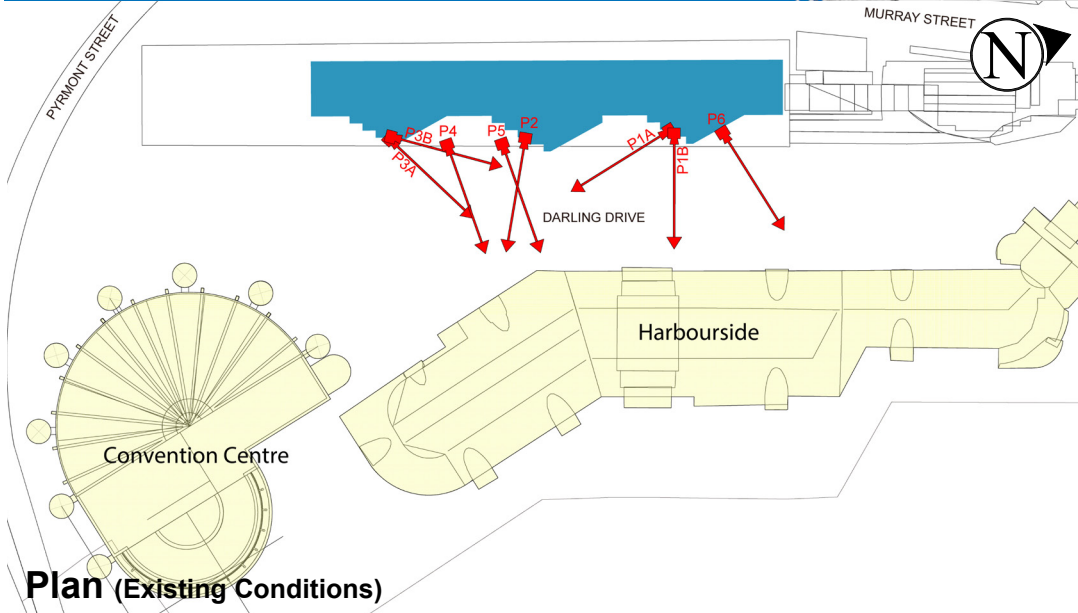
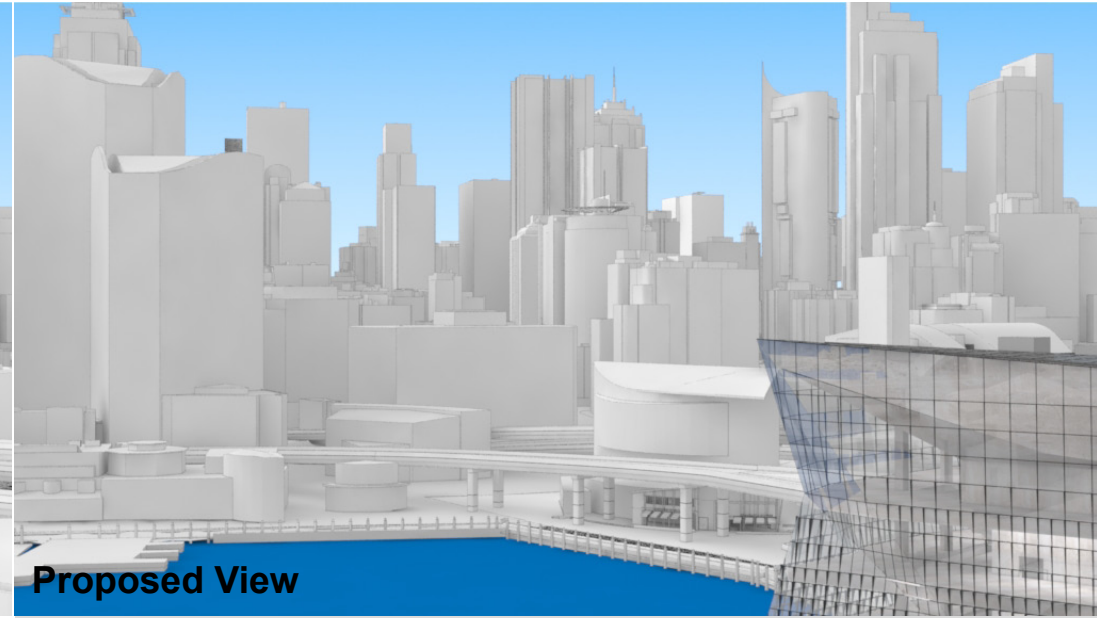
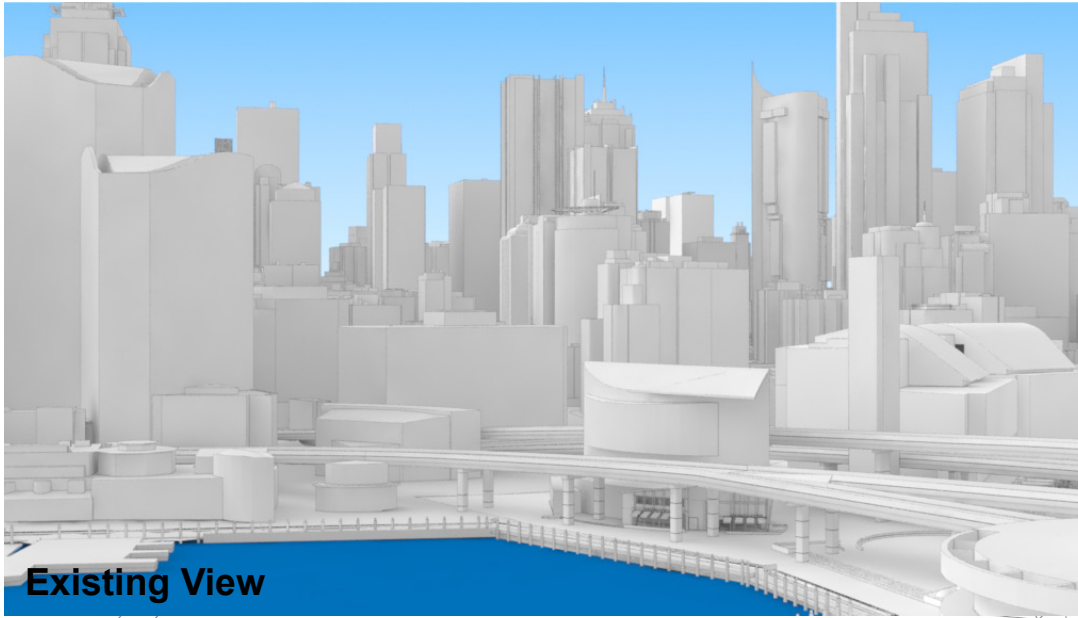
7

 Key Building

■ Neighbouring Buildings

← View Direction (50mm Camera)

- Camera Position



Novotel Sydney Darling Harbour

Position: P2

Level: 07

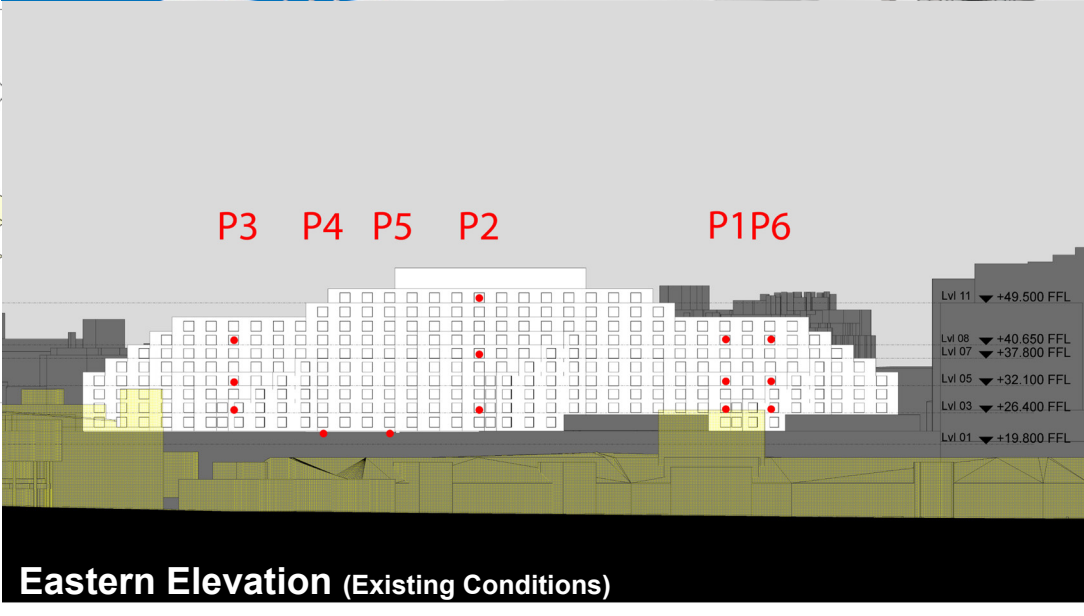
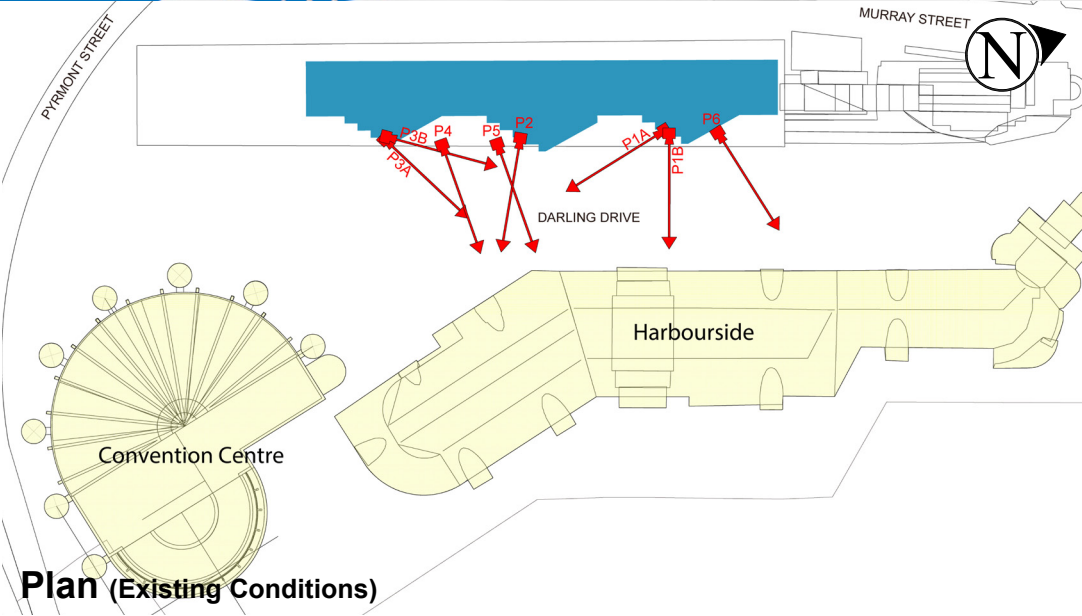
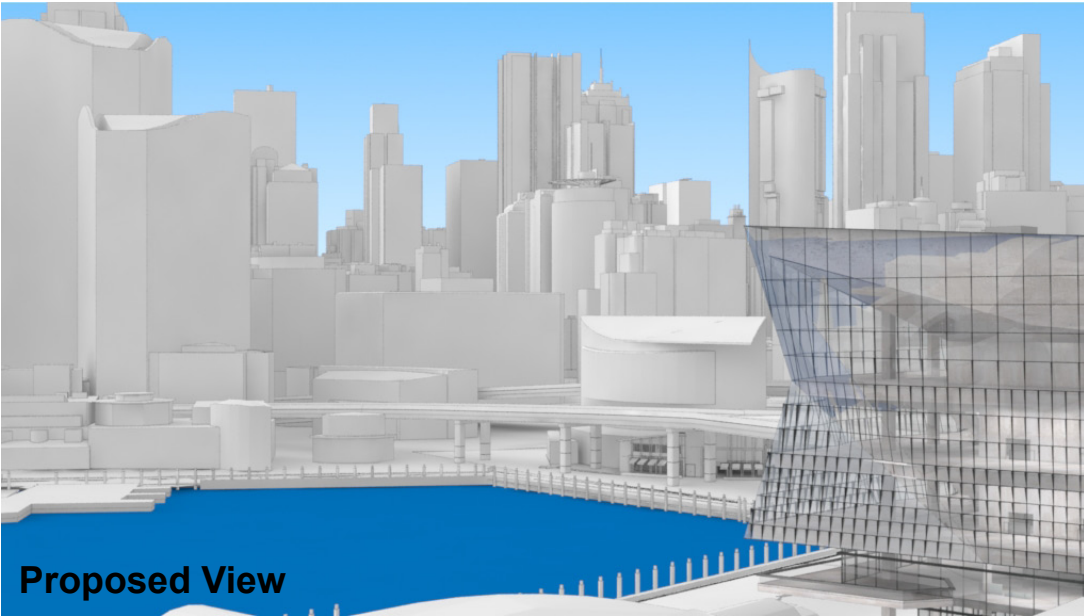
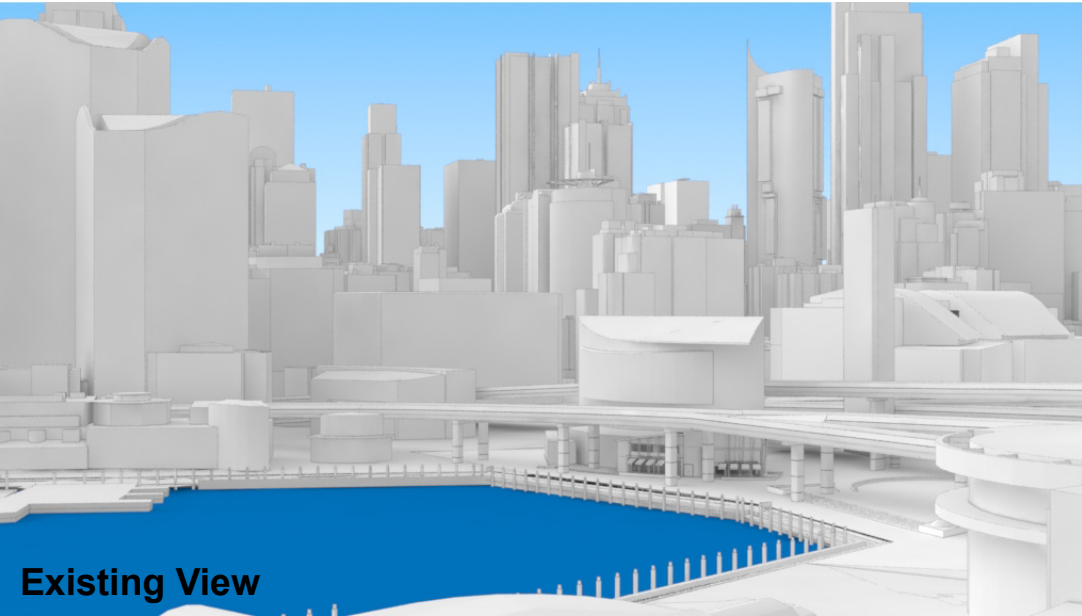
RL: 39.400 (Camera Height)

FOR INFORMATION ONLY

Illustrative designs of built forms in the Haymarket precinct do not form part of this development application (and will be the subject of separate development assessment processes) and is shown for information and broader illustrative purposes.
These images are produced here for view analysis purposes only.

LEGEND:

- Key Building
- Neighbouring Buildings
- View Direction (50mm Camera)
- Camera Position



Novotel Sydney Darling Harbour

Position: P2

Level: 03

RL: 28.000 (Camera Height)

FOR INFORMATION ONLY

Illustrative designs of built forms in the Haymarket precinct do not form part of this development application (and will be the subject of separate development assessment processes) and is shown for information and broader illustrative purposes.
These images are produced here for view analysis purposes only.

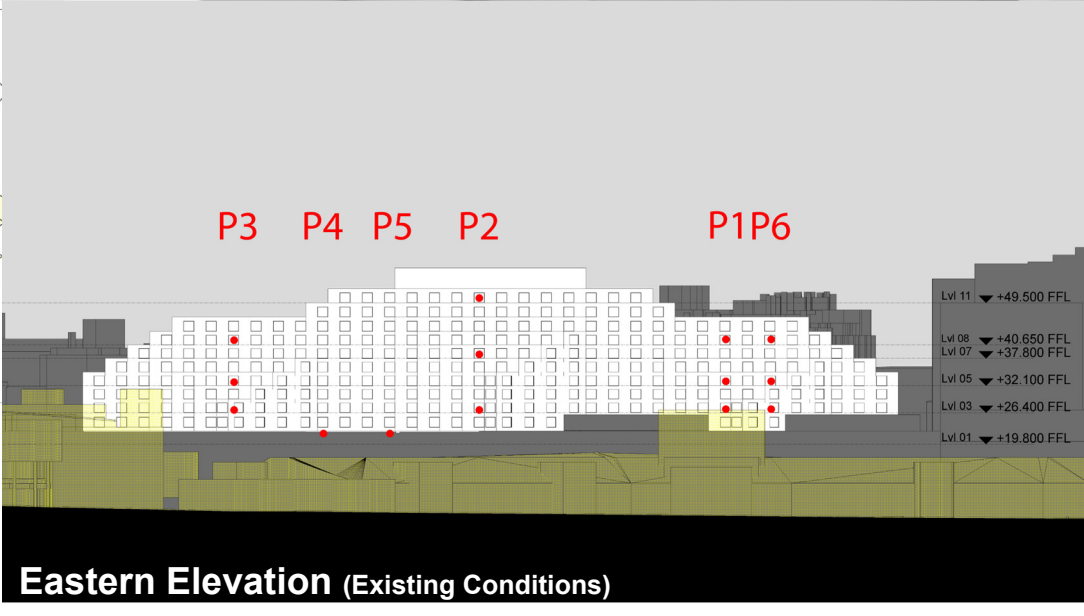
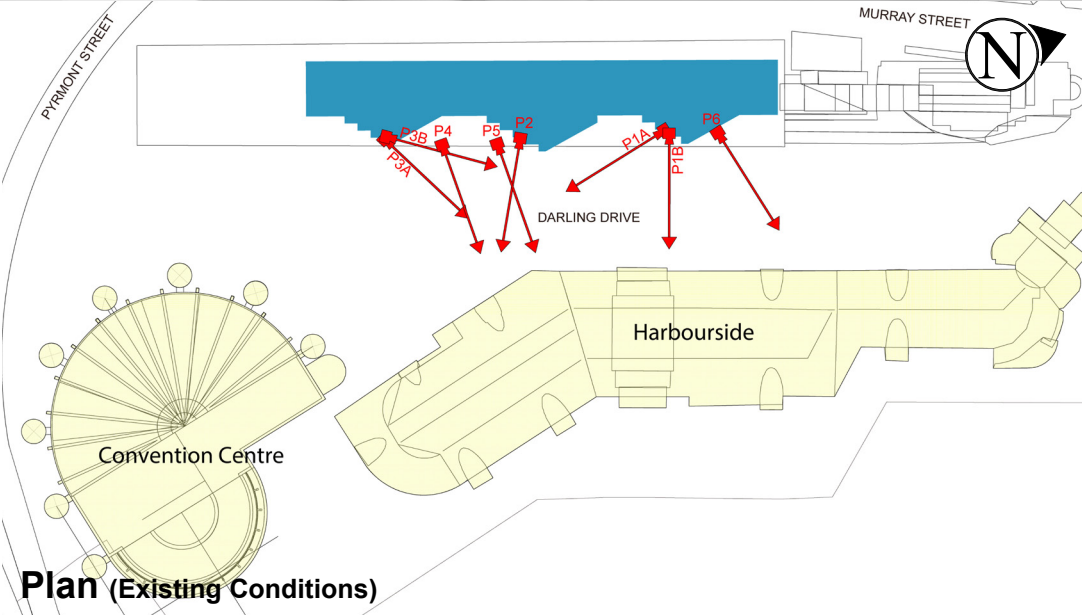
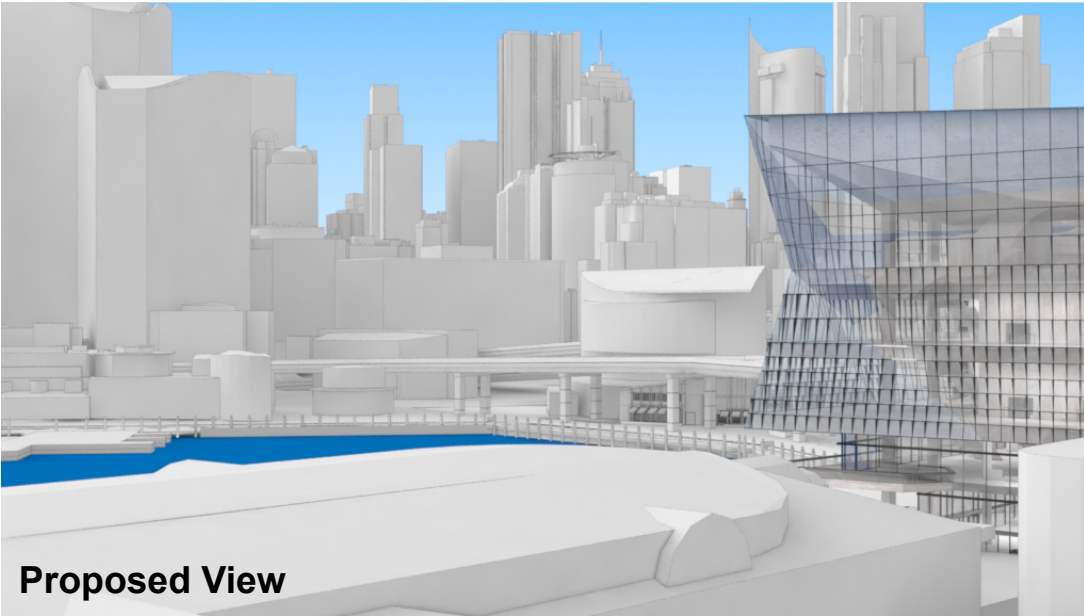
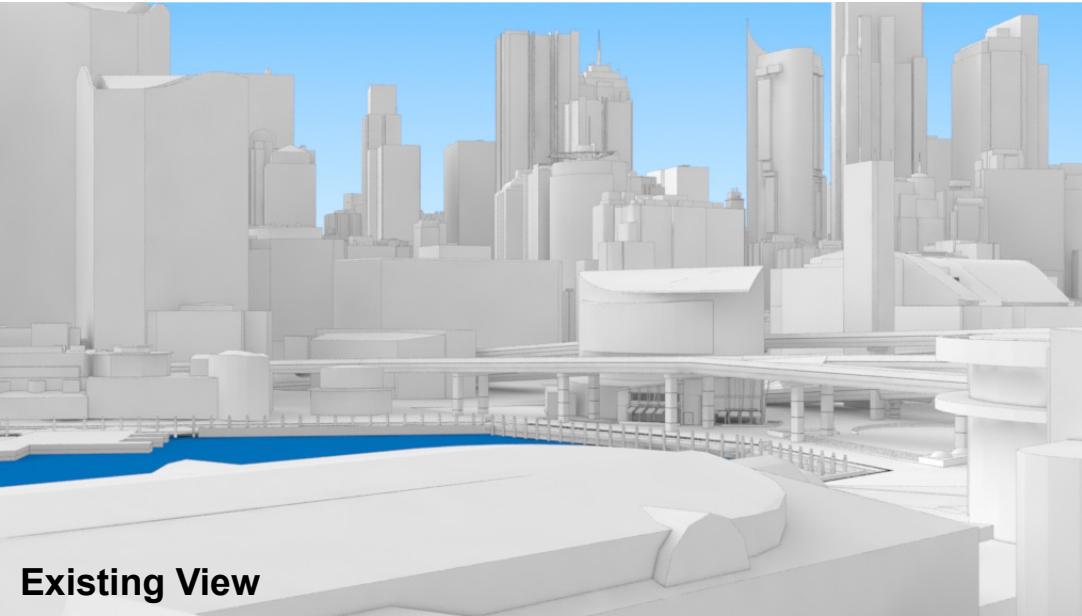
LEGEND:

Key Building

Neighbouring Buildings

View Direction (50mm Camera)

Camera Position



Novotel Sydney Darling Harbour

Position: P3A

Level: 08

RL: 42.250 (Camera Height)

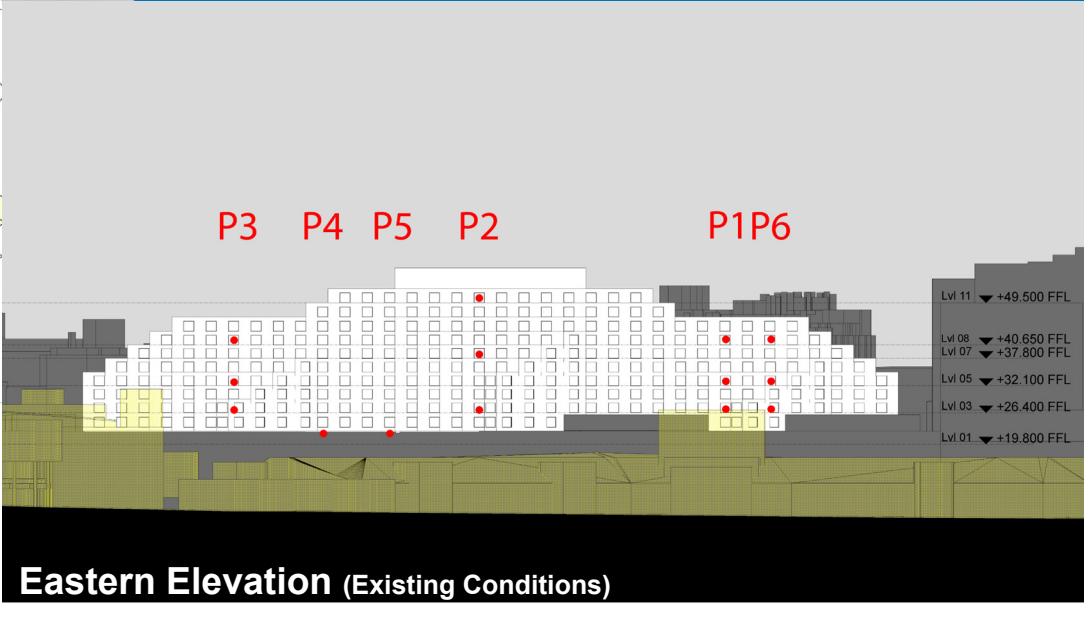
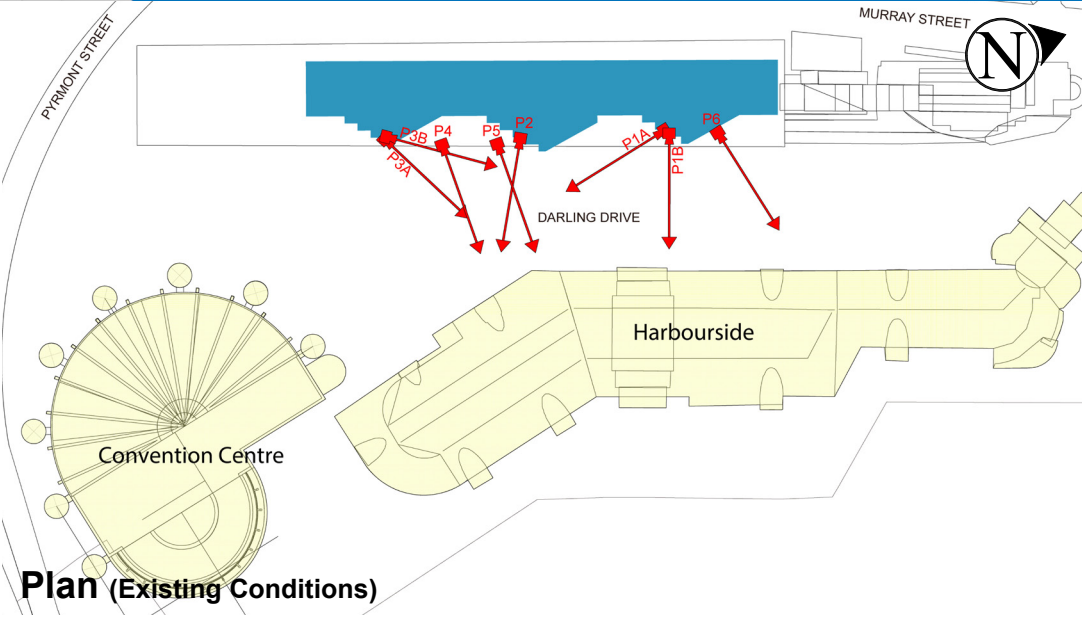
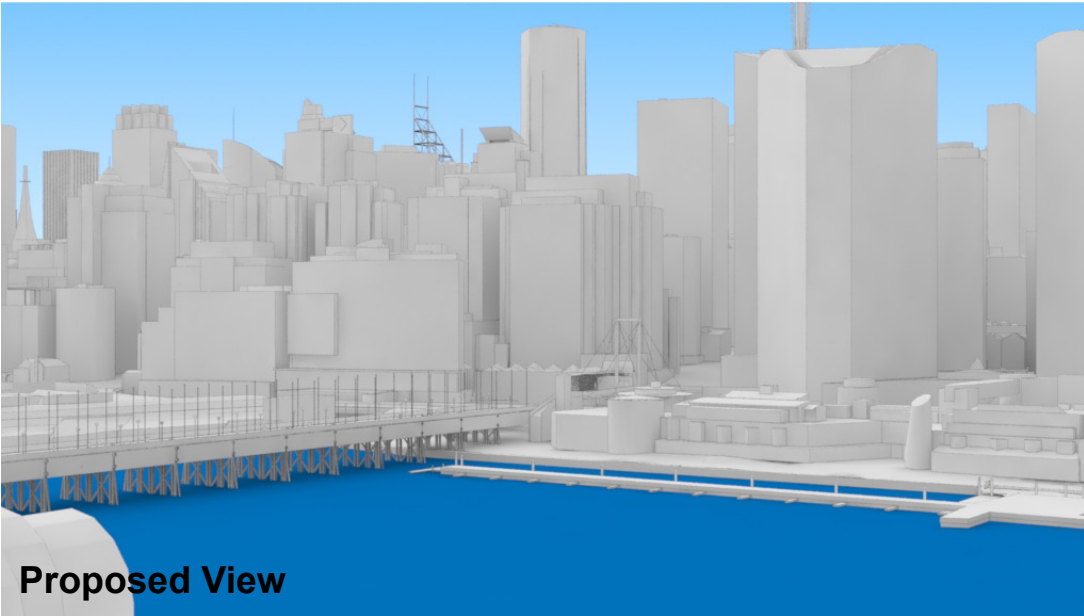
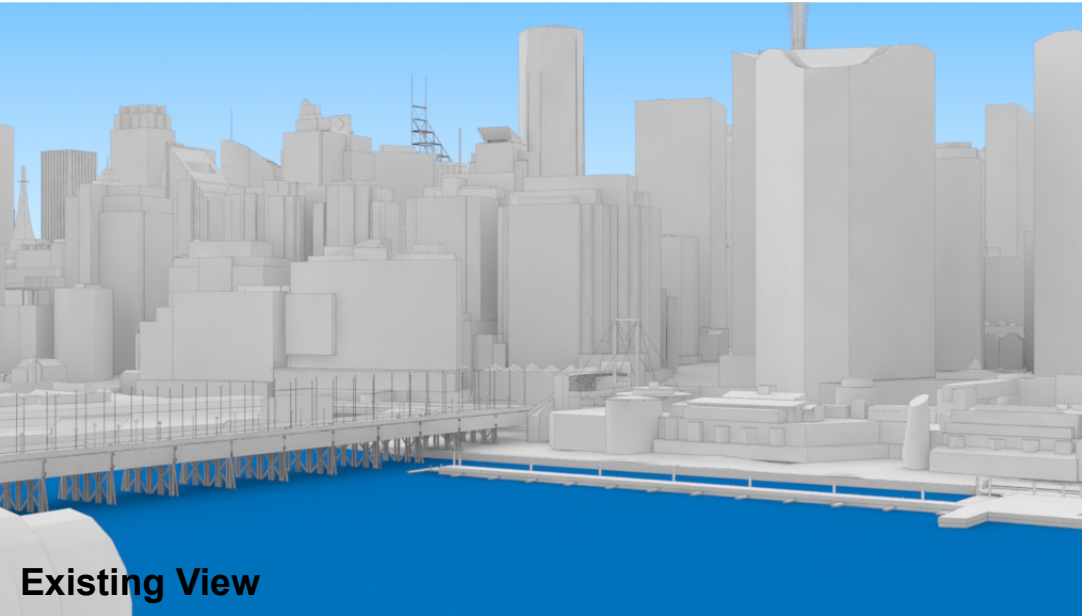
FOR INFORMATION ONLY

Illustrative designs of built forms in the Haymarket precinct do not form part of this development application (and will be the subject of separate development assessment processes) and is shown for information and broader illustrative purposes.
These images are produced here for view analysis purposes only.

LEGEND: 10

- Key Building
- Neighbouring Buildings

- View Direction (50mm Camera)
- Camera Position



Novotel Sydney Darling Harbour

Position: P3A

Level: 05

RL: 33.700 (Camera Height)

FOR INFORMATION ONLY

Illustrative designs of built forms in the Haymarket precinct do not form part of this development application (and will be the subject of separate development assessment processes) and is shown for information and broader illustrative purposes.

These images are produced here for view analysis purposes only.

LEGEND:

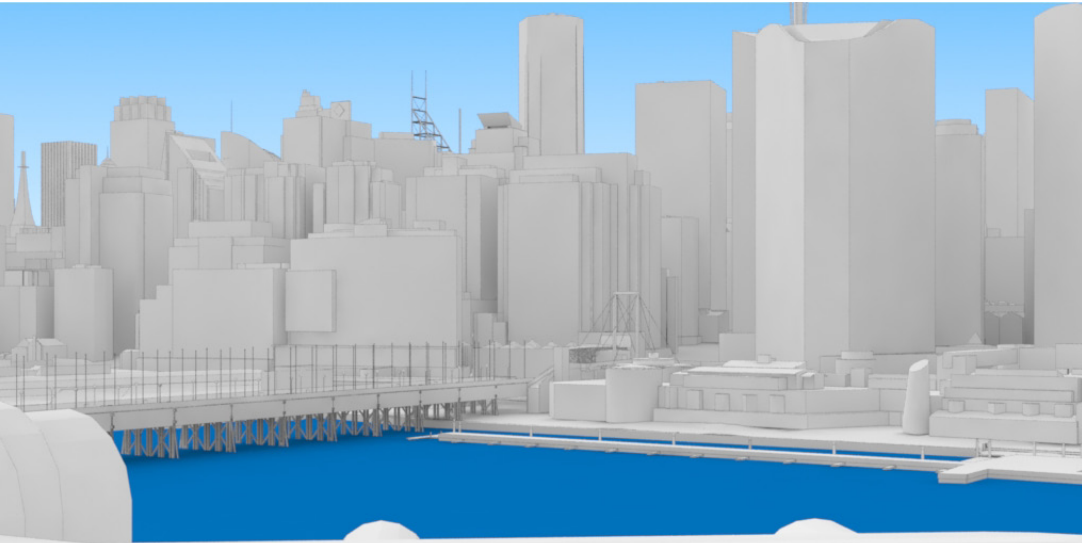
11

Key Building

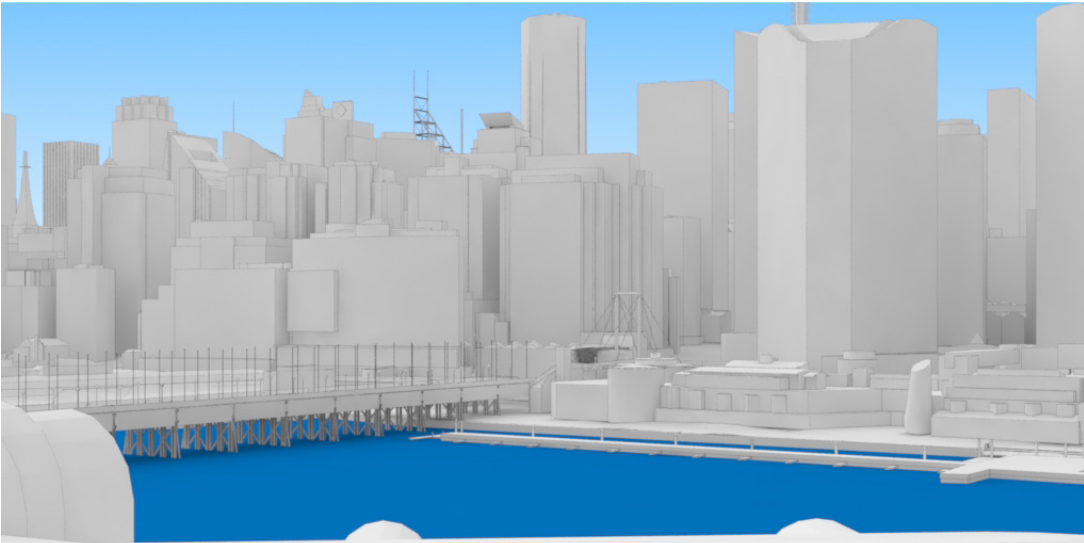
Neighbouring Buildings

View Direction (50mm Camera)

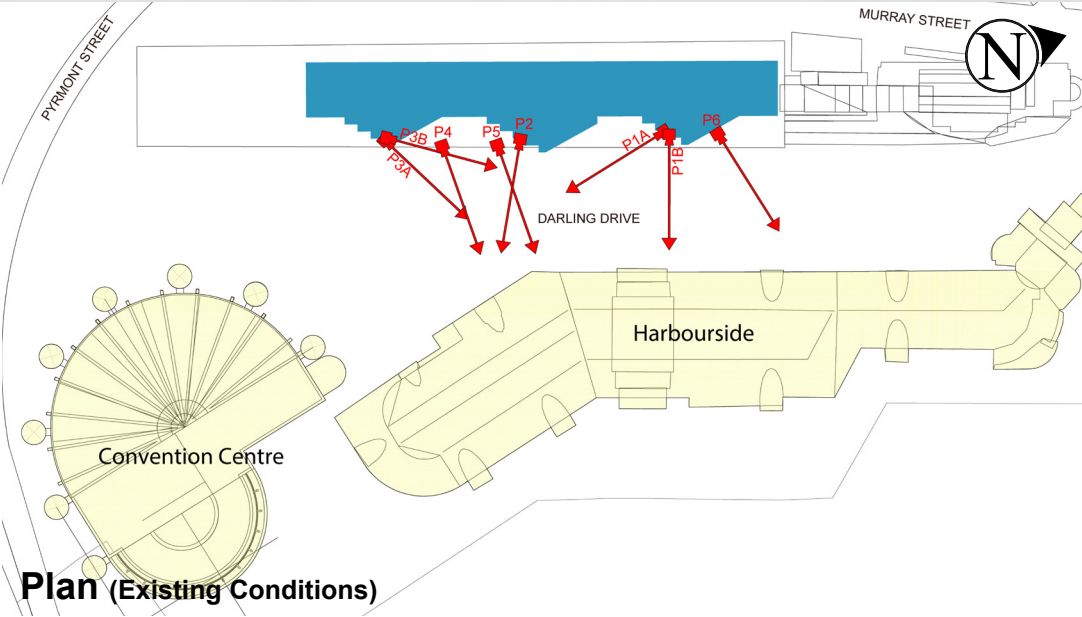
Camera Position



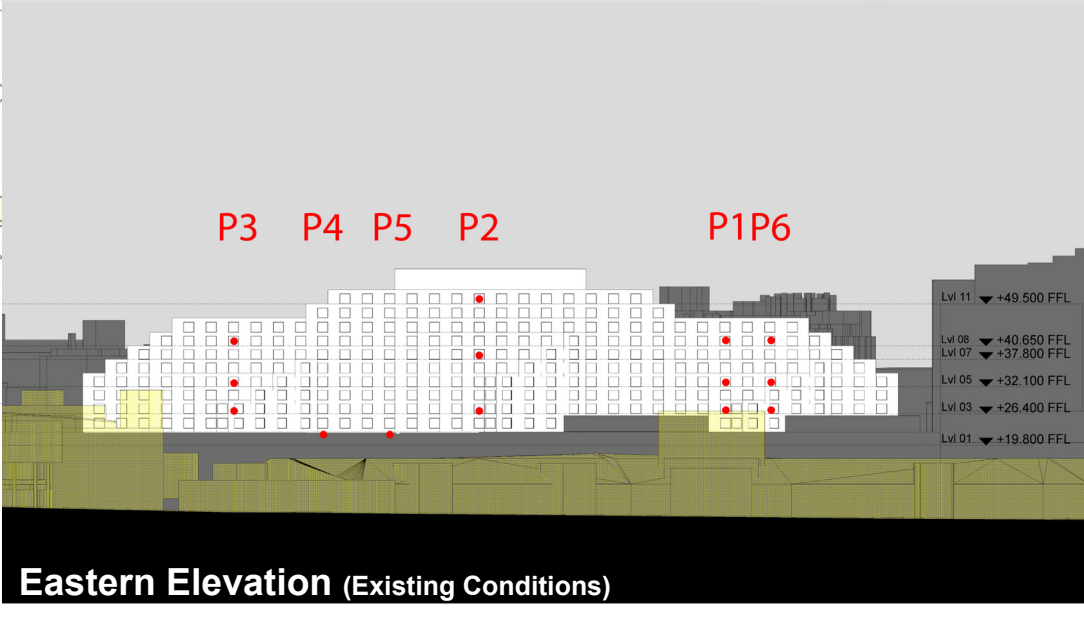
Existing View



Proposed View



Plan (Existing Conditions)



Eastern Elevation (Existing Conditions)

Novotel Sydney Darling Harbour

Position: P3A

Level: 03

RL: 28.00 (Camera Height)

FOR INFORMATION ONLY

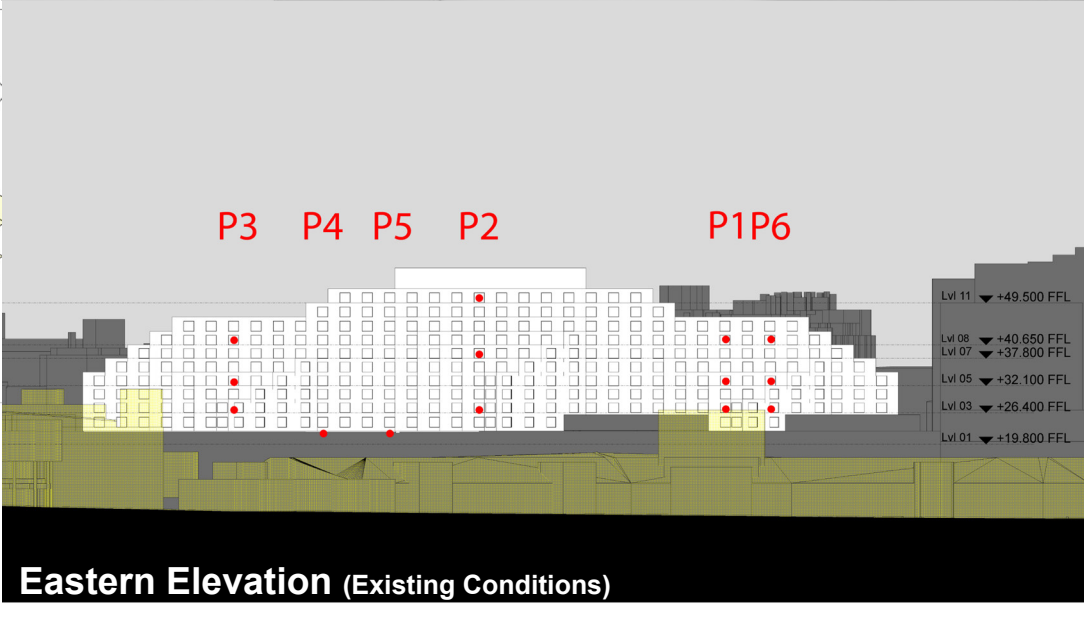
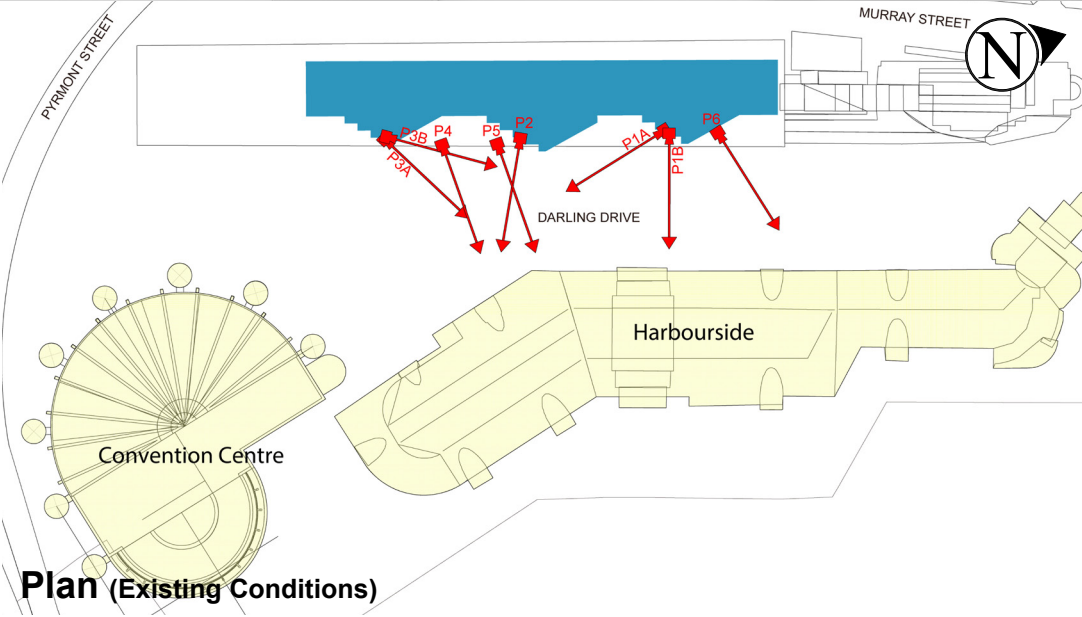
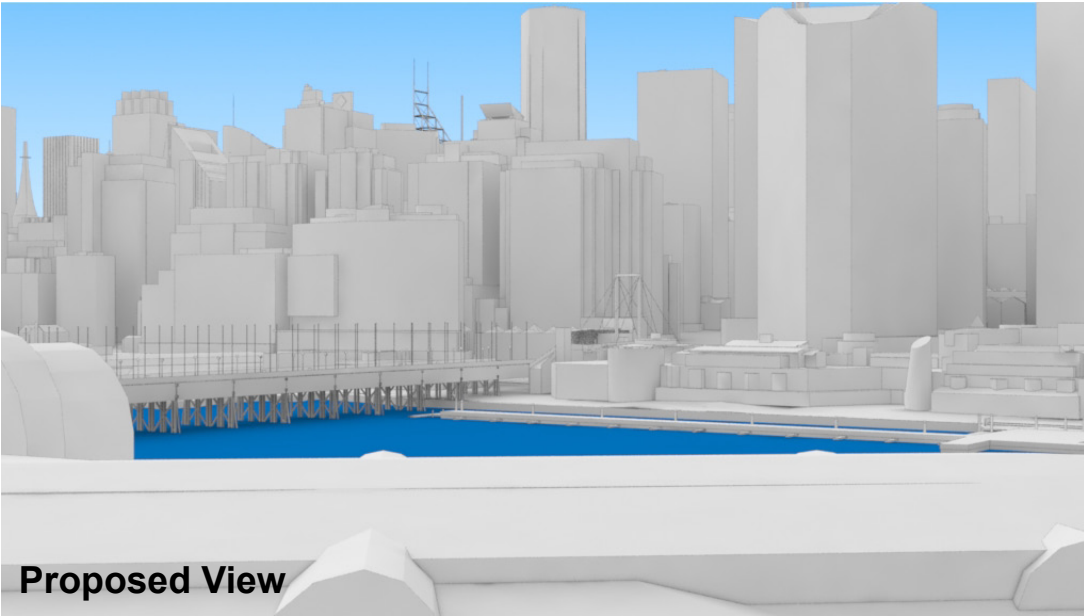
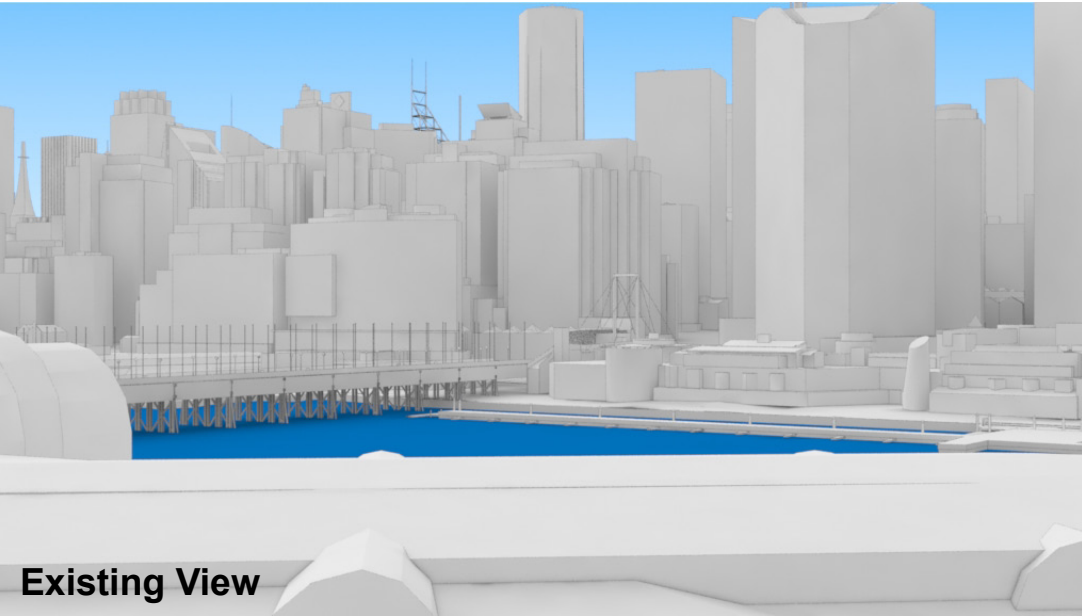
Illustrative designs of built forms in the Haymarket precinct do not form part of this development application (and will be the subject of separate development assessment processes) and is shown for information and broader illustrative purposes.

These images are produced here for view analysis purposes only.

LEGEND: 12

- Key Building
- Neighbouring Buildings

- View Direction (50mm Camera)
- Camera Position



Novotel Sydney Darling Harbour

Position: P3B

Level: 08

RL: 42.250 (Camera Height)

FOR INFORMATION ONLY

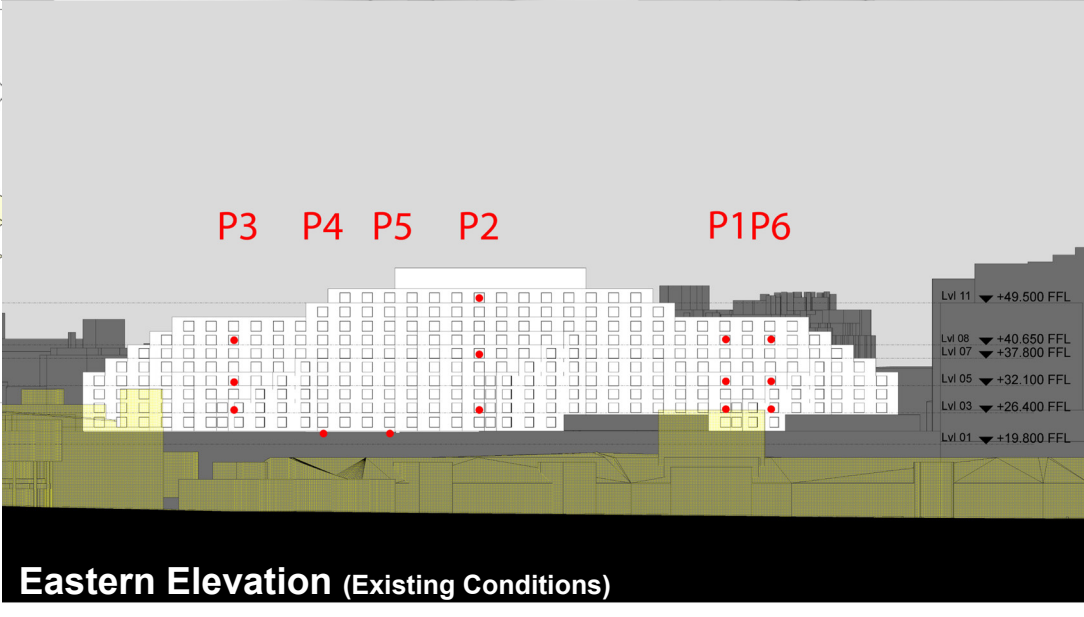
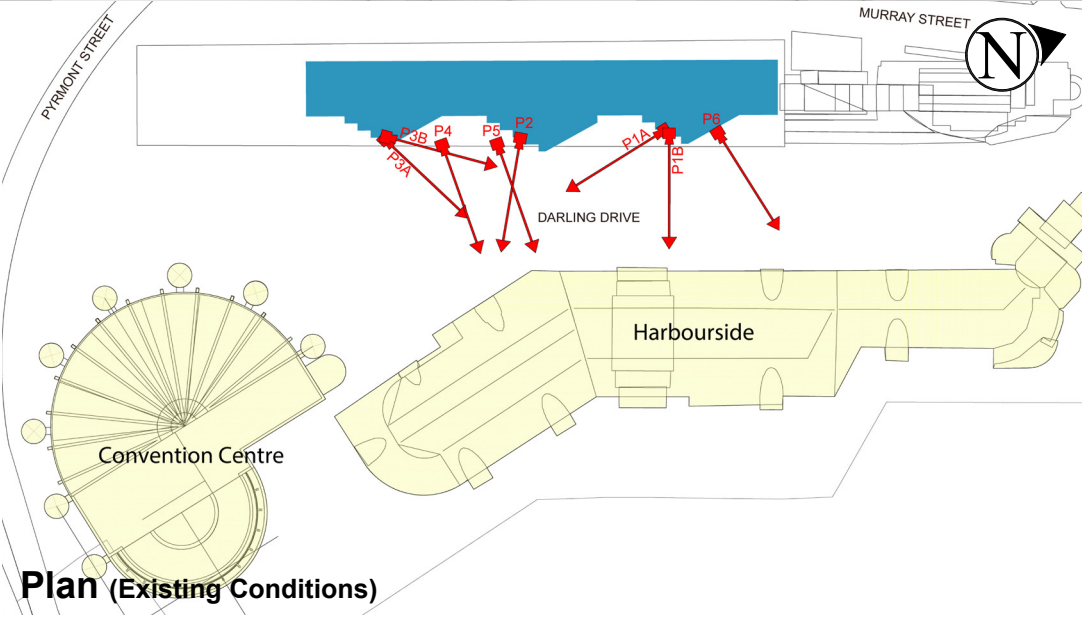
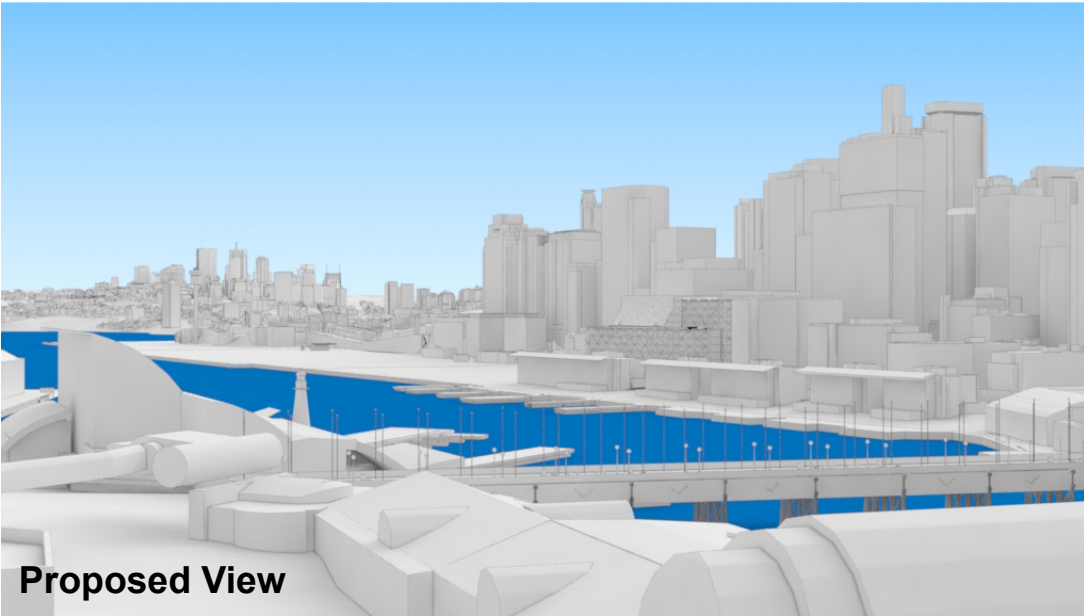
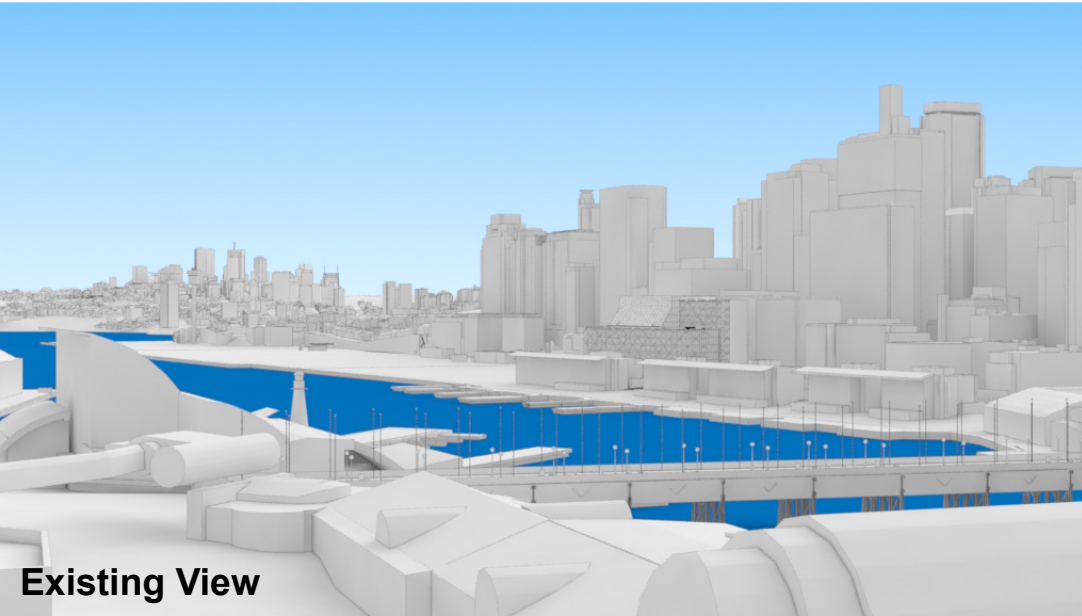
Illustrative designs of built forms in the Haymarket precinct do not form part of this development application (and will be the subject of separate development assessment processes) and is shown for information and broader illustrative purposes.

These images are produced here for view analysis purposes only.

LEGEND: 13

- Key Building
- Neighbouring Buildings

- View Direction (50mm Camera)
- Camera Position



Novotel Sydney Darling Harbour

Position: P3B

Level: 05

RL: 33.700 (Camera Height)

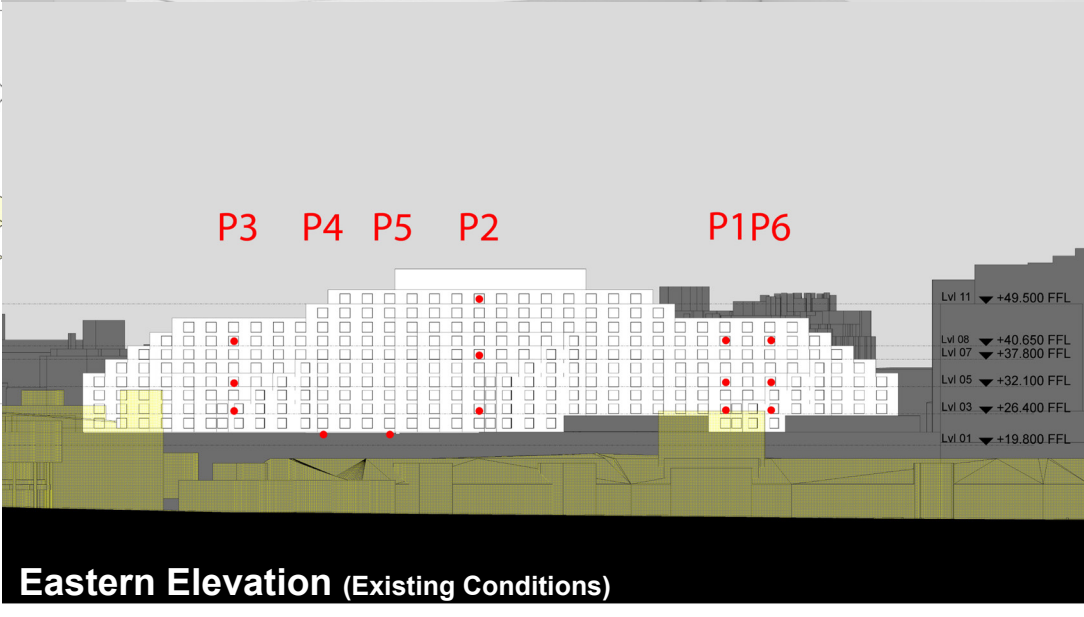
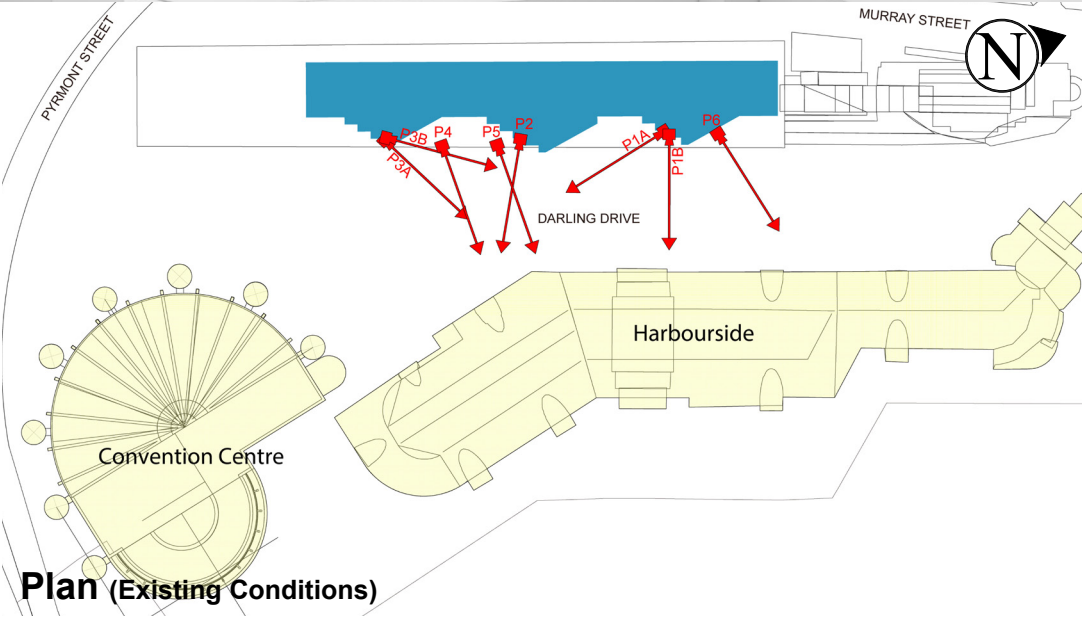
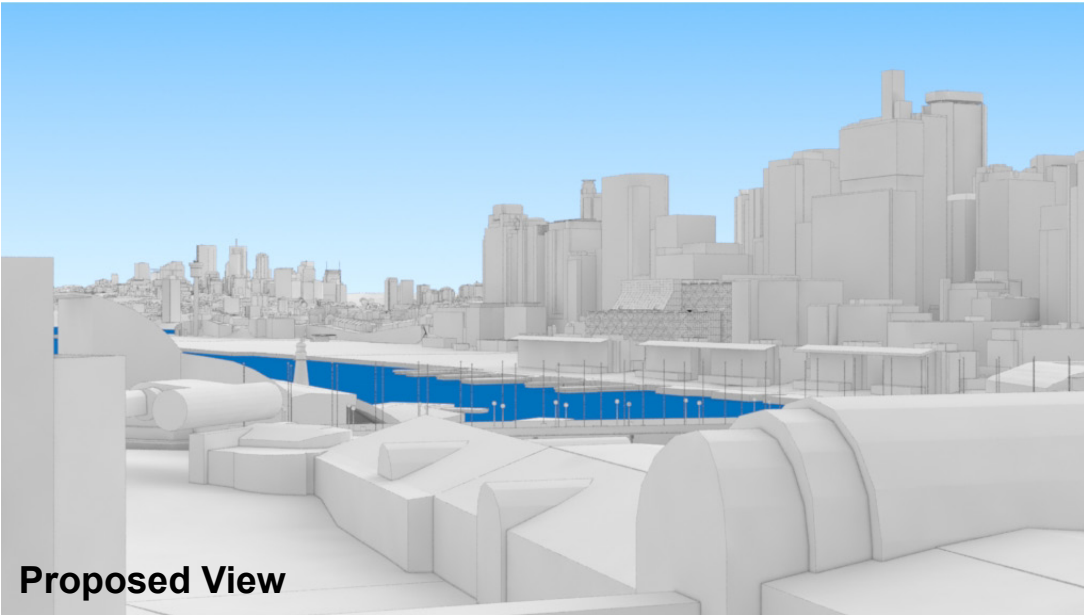
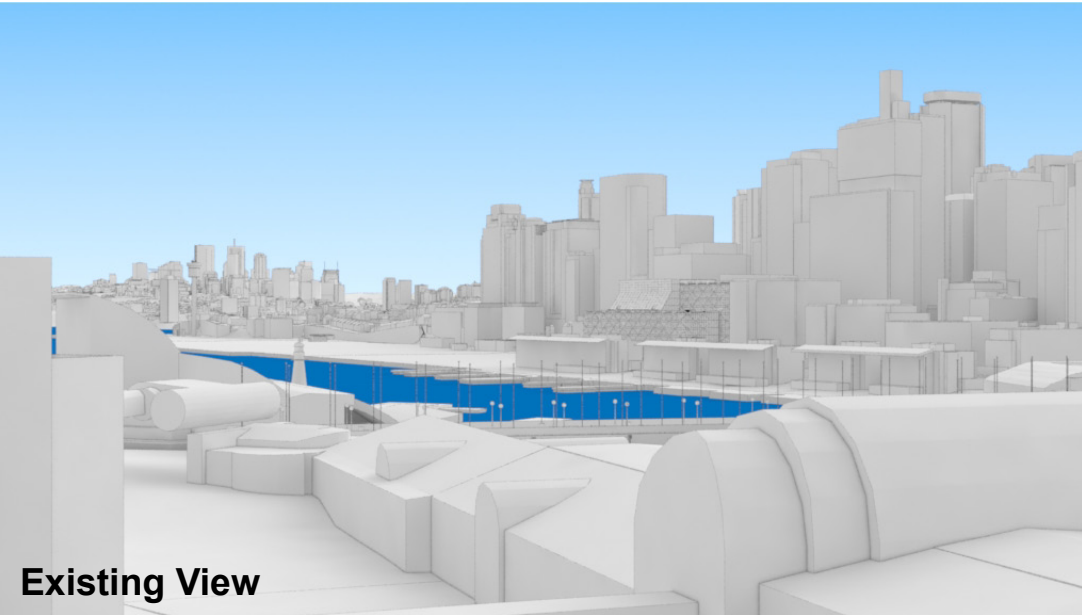
FOR INFORMATION ONLY

Illustrative designs of built forms in the Haymarket precinct do not form part of this development application (and will be the subject of separate development assessment processes) and is shown for information and broader illustrative purposes.
These images are produced here for view analysis purposes only.

LEGEND: 14

- Key Building
- Neighbouring Buildings

- View Direction (50mm Camera)
- Camera Position



Novotel Sydney Darling Harbour

Position: P3B

Level: 03

RL: 28.00 (Camera Height)

FOR INFORMATION ONLY

Illustrative designs of built forms in the Haymarket precinct do not form part of this development application (and will be the subject of separate development assessment processes) and is shown for information and broader illustrative purposes.
These images are produced here for view analysis purposes only.

LEGEND:

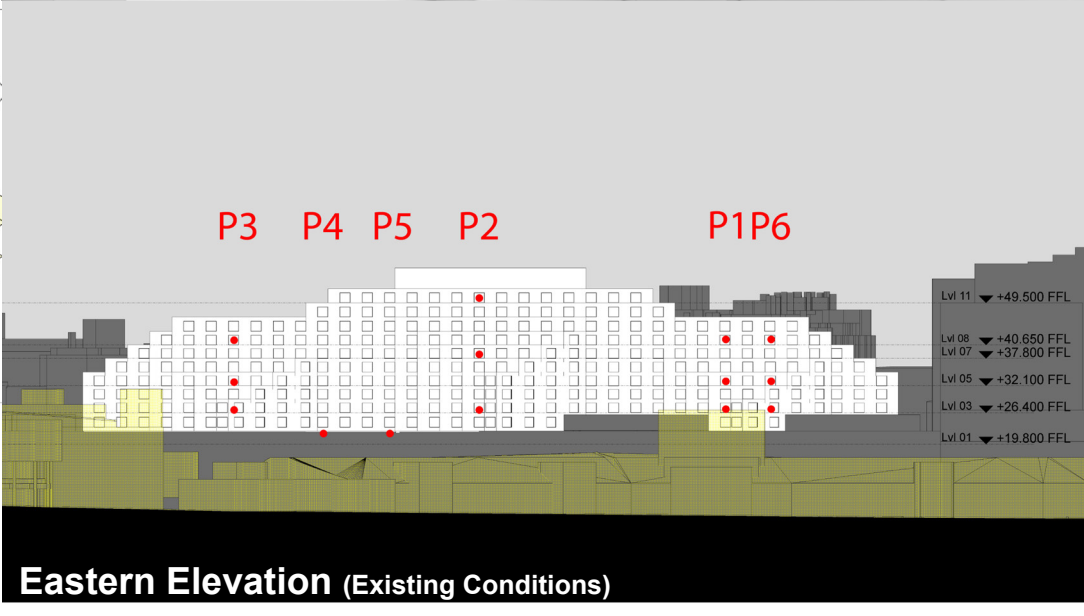
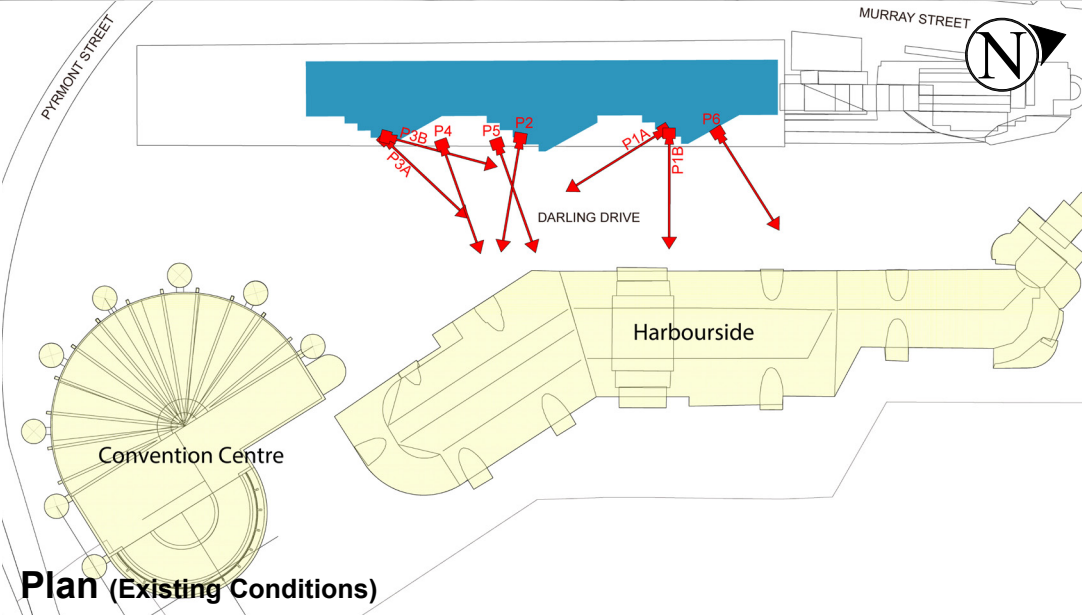
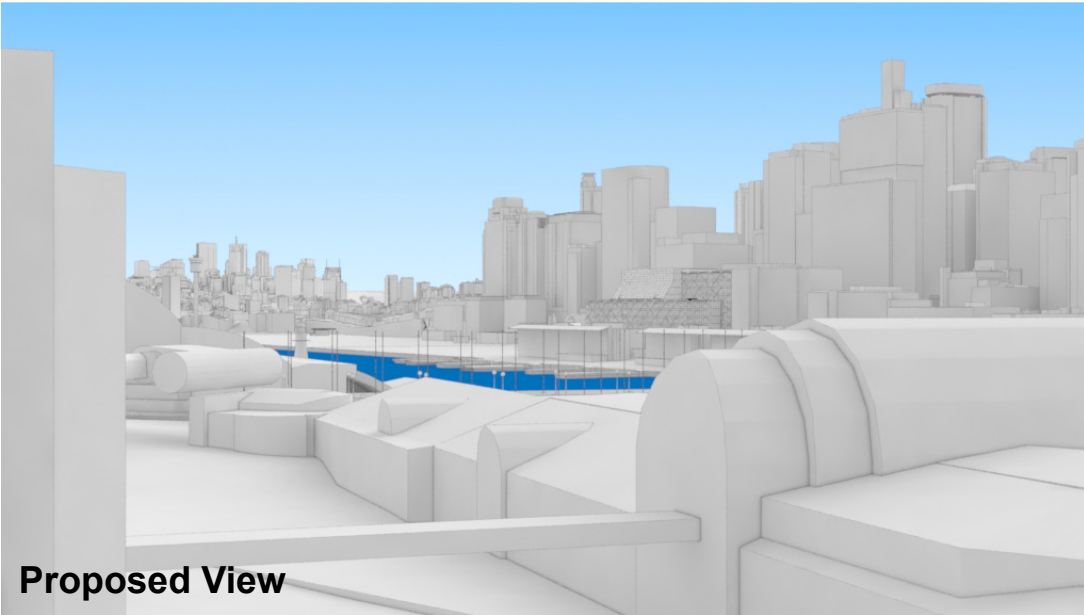
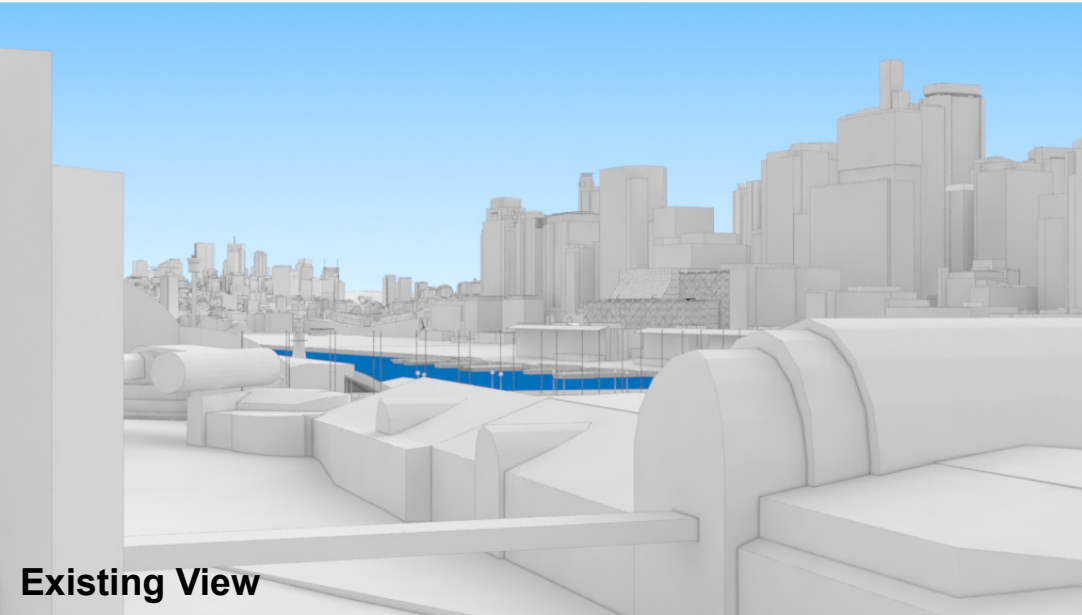
15

Key Building

Neighbouring Buildings

View Direction (50mm Camera)

Camera Position



Novotel Sydney Darling Harbour

Position: P4
Level: 01 (Balcony)
RL: 21.32 (Camera Height)

FOR INFORMATION ONLY
Illustrative designs of built forms in the Haymarket precinct do not form part of this development application (and will be the subject of separate development assessment processes) and is shown for information and broader illustrative purposes.
These images are produced here for view analysis purposes only.

LEGEND:

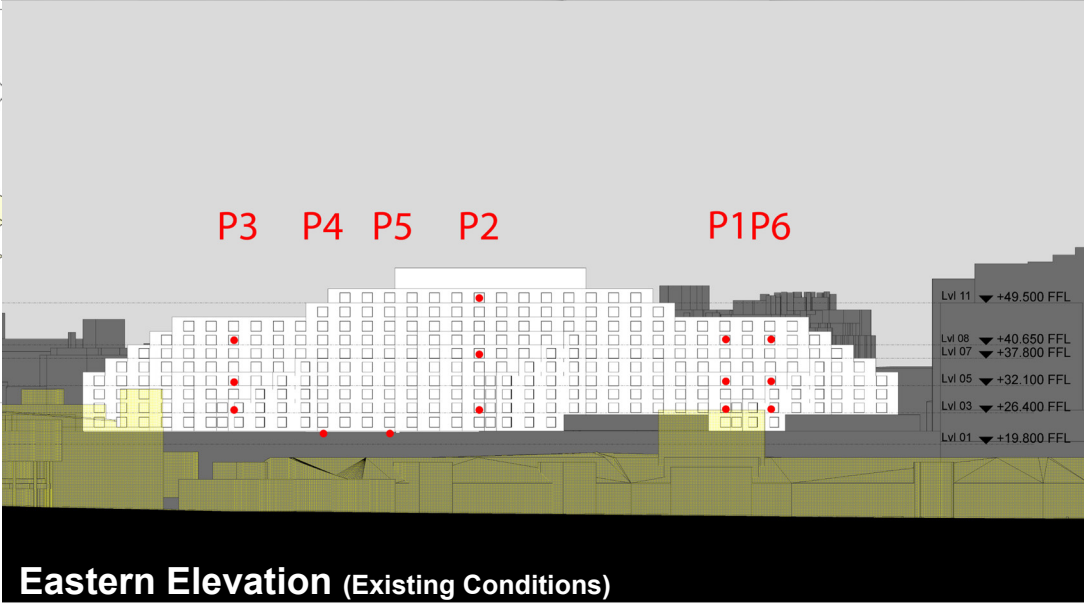
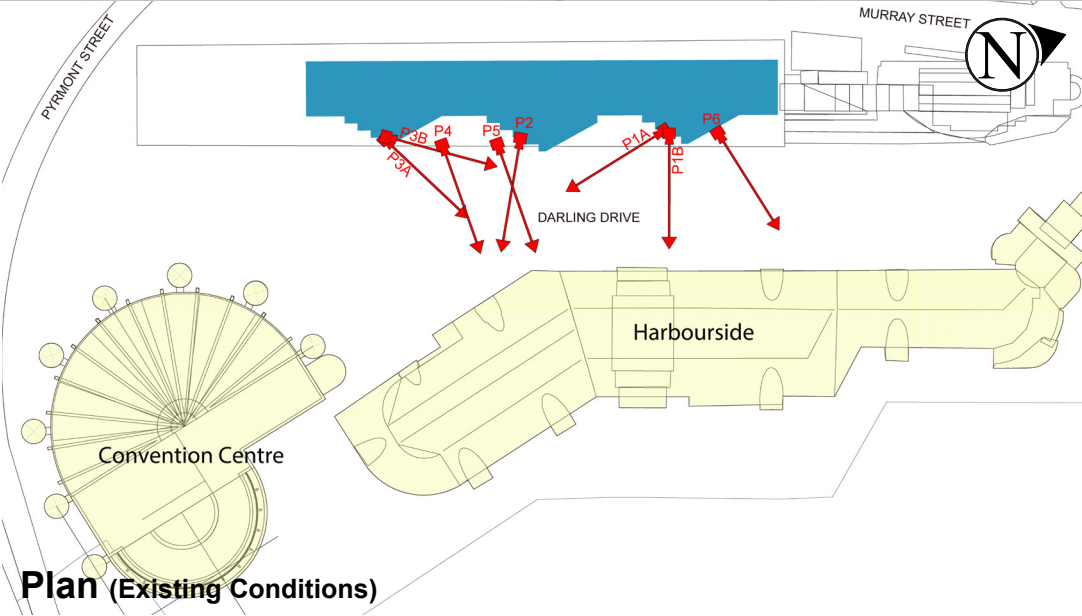
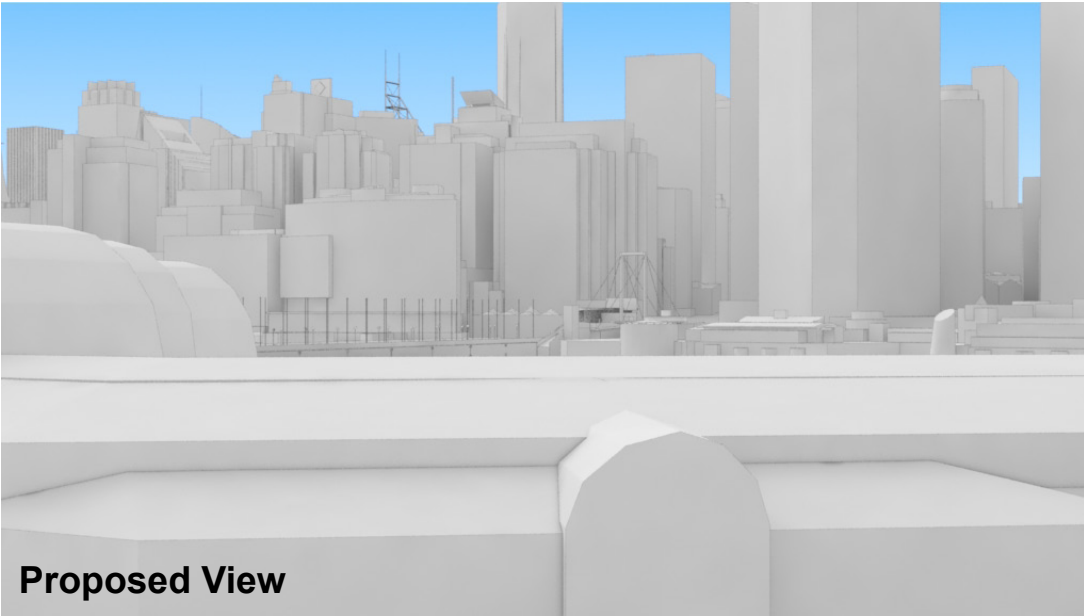
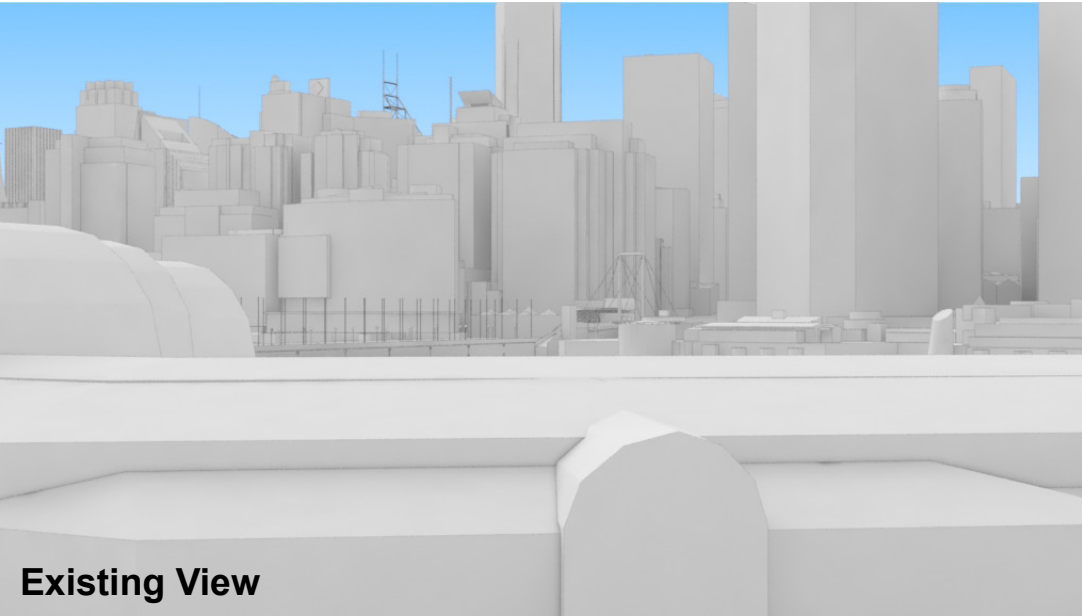
Key Building

Neighbouring Buildings

View Direction (50mm Camera)

Camera Position

16



Novotel Sydney Darling Harbour

Position: P5
Level: 01 (Balcony)
RL: 21.32 (Camera Height)

FOR INFORMATION ONLY
Illustrative designs of built forms in the Haymarket precinct do not form part of this development application (and will be the subject of separate development assessment processes) and is shown for information and broader illustrative purposes.
These images are produced here for view analysis purposes only.

LEGEND:

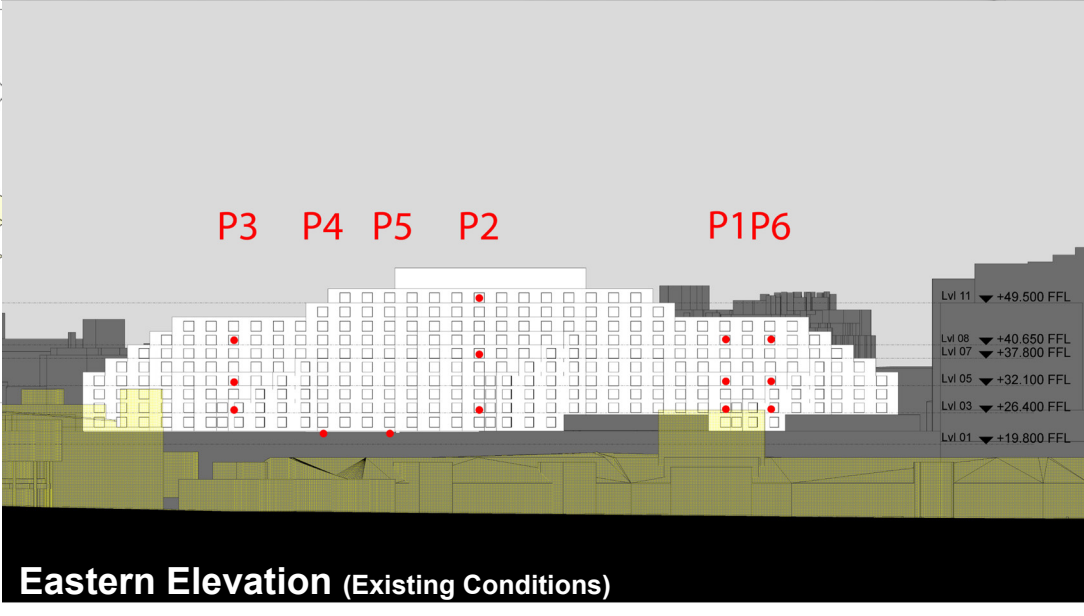
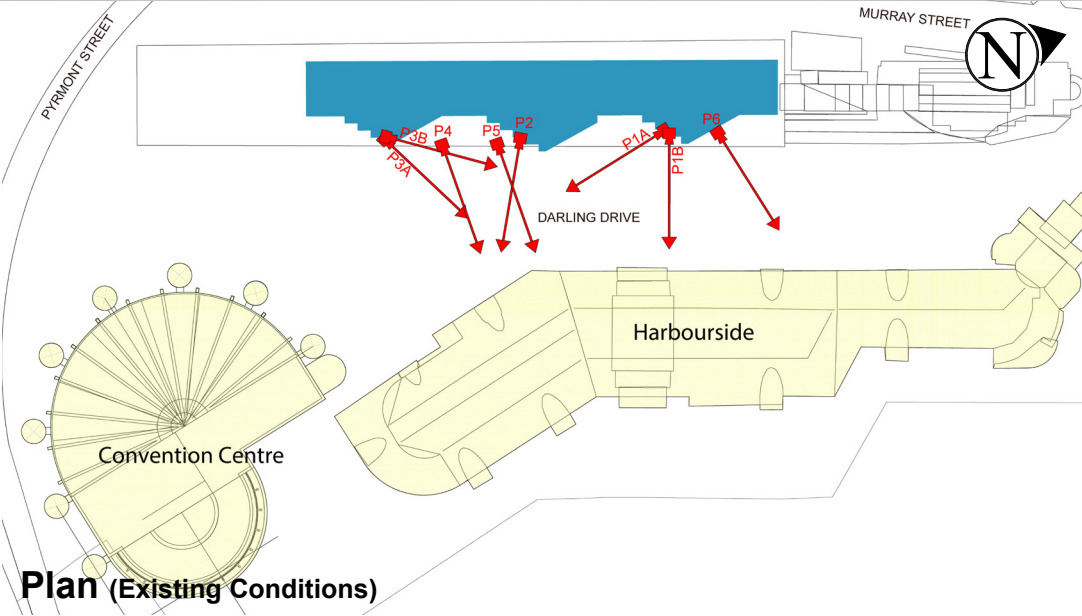
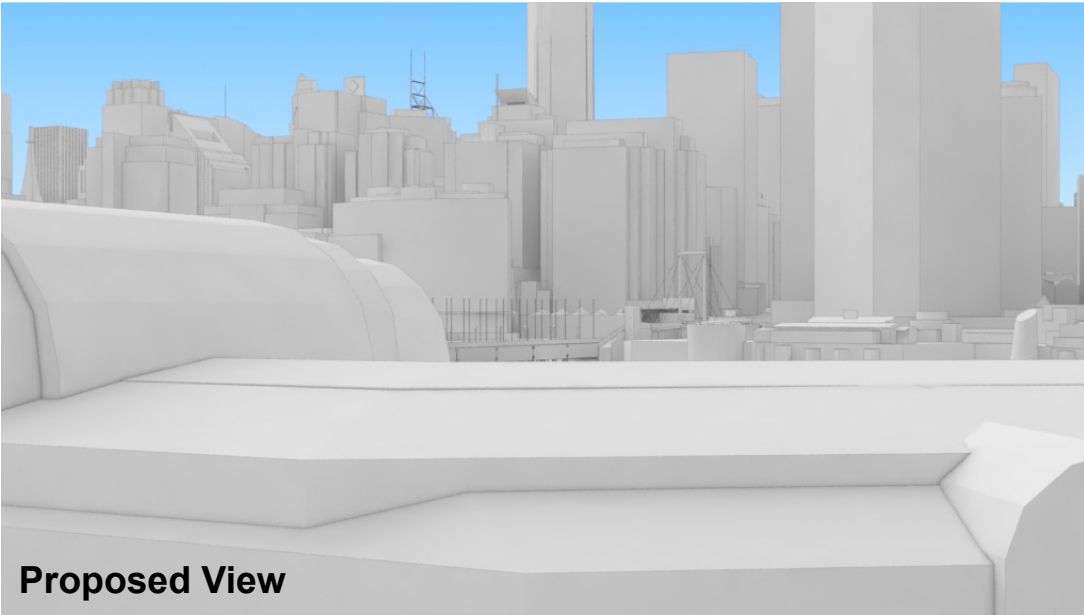
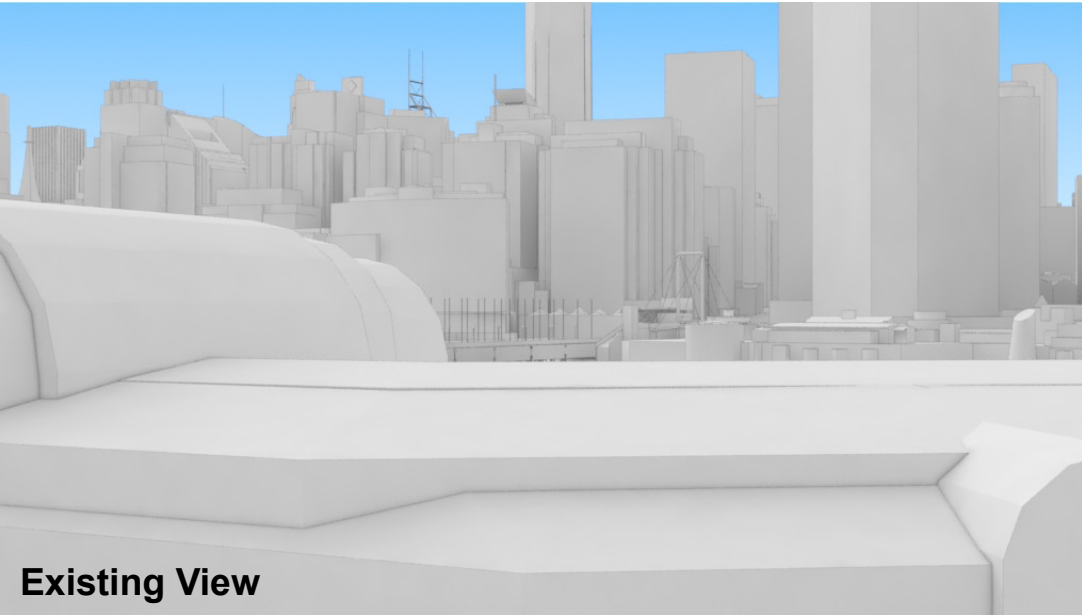
Key Building

Neighbouring Buildings

View Direction (50mm Camera)

Camera Position

17



Novotel Sydney Darling Harbour

Position: P6

Level: 08

RL: 42.250 (Camera Height)

FOR INFORMATION ONLY

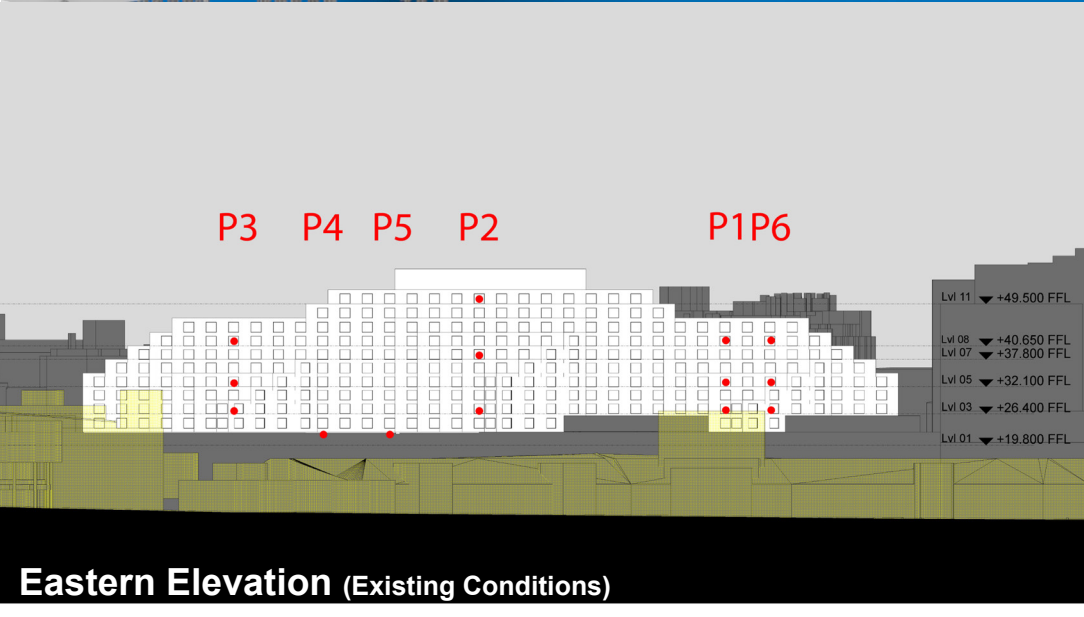
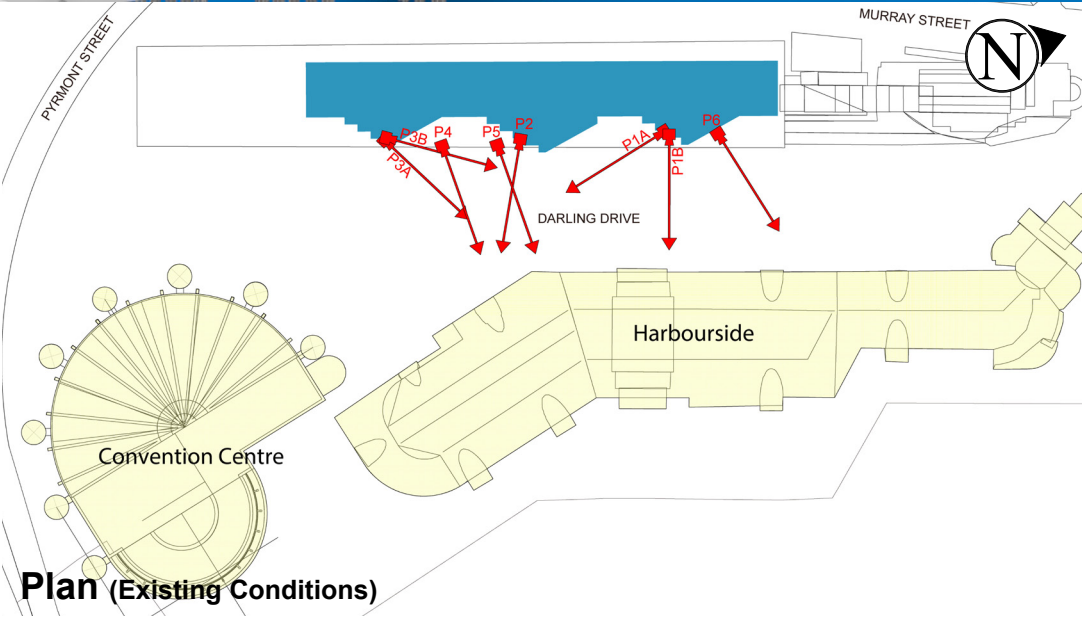
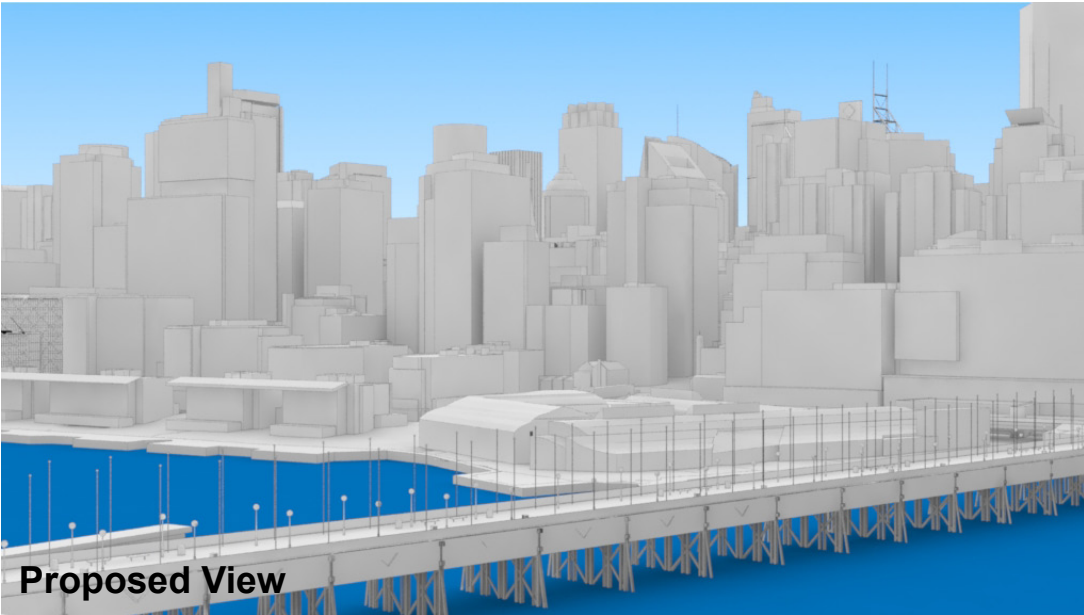
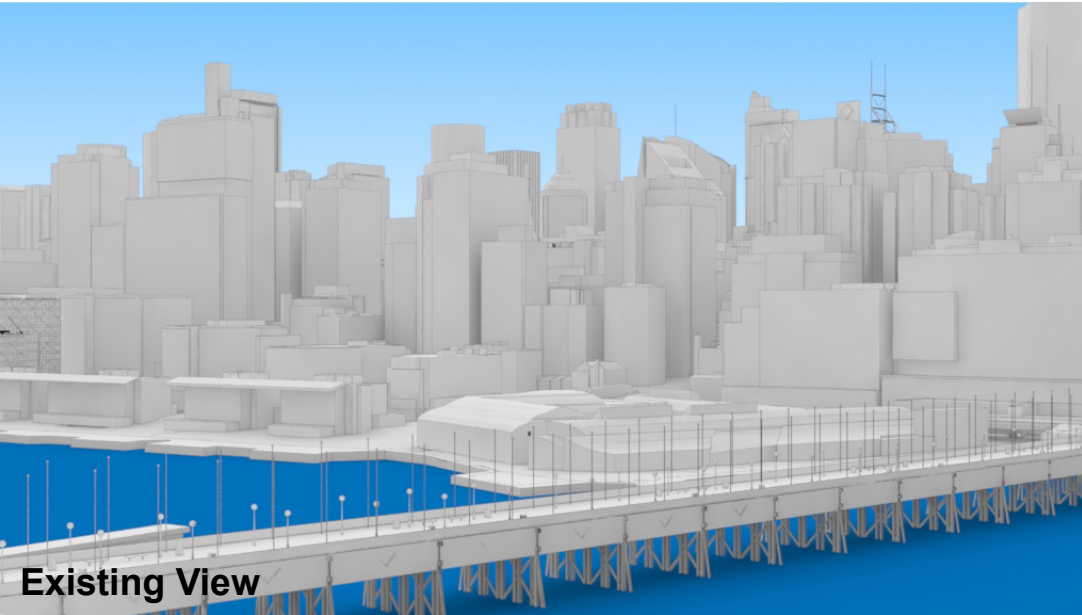
Illustrative designs of built forms in the Haymarket precinct do not form part of this development application (and will be the subject of separate development assessment processes) and is shown for information and broader illustrative purposes.

These images are produced here for view analysis purposes only.

LEGEND: 18

- Key Building
- Neighbouring Buildings

- View Direction (50mm Camera)
- Camera Position



Novotel Sydney Darling Harbour

Position: P6

Level: 05

RL: 33.700 (Camera Height)

FOR INFORMATION ONLY

Illustrative designs of built forms in the Haymarket precinct do not form part of this development application (and will be the subject of separate development assessment processes) and is shown for information and broader illustrative purposes.
These images are produced here for view analysis purposes only.

LEGEND:

Key Building

Neighbouring Buildings

View Direction (50mm Camera)

Camera Position

19

