

Peak Apartments

Position: P3B

Level: 30

RL: 98.225 (Camera Height)

FOR INFORMATION ONLY

Illustrative designs of built forms in the Haymarket precinct do not form part of this development application (and will be the subject of separate development assessment processes) and is shown for information and broader illustrative purposes.

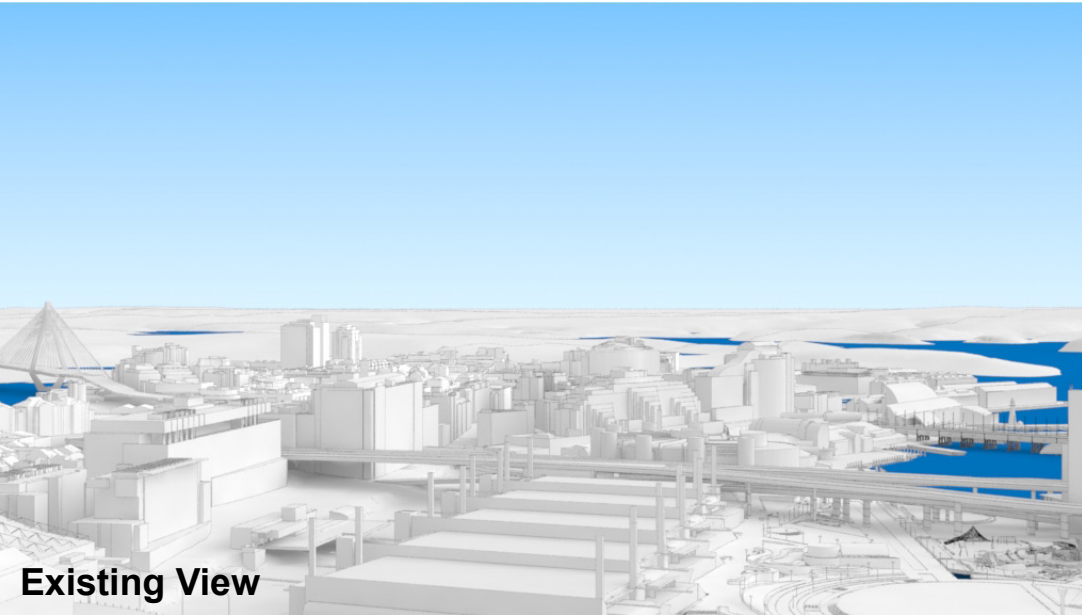
These images are produced here for view analysis purposes only.

LEGEND: 116

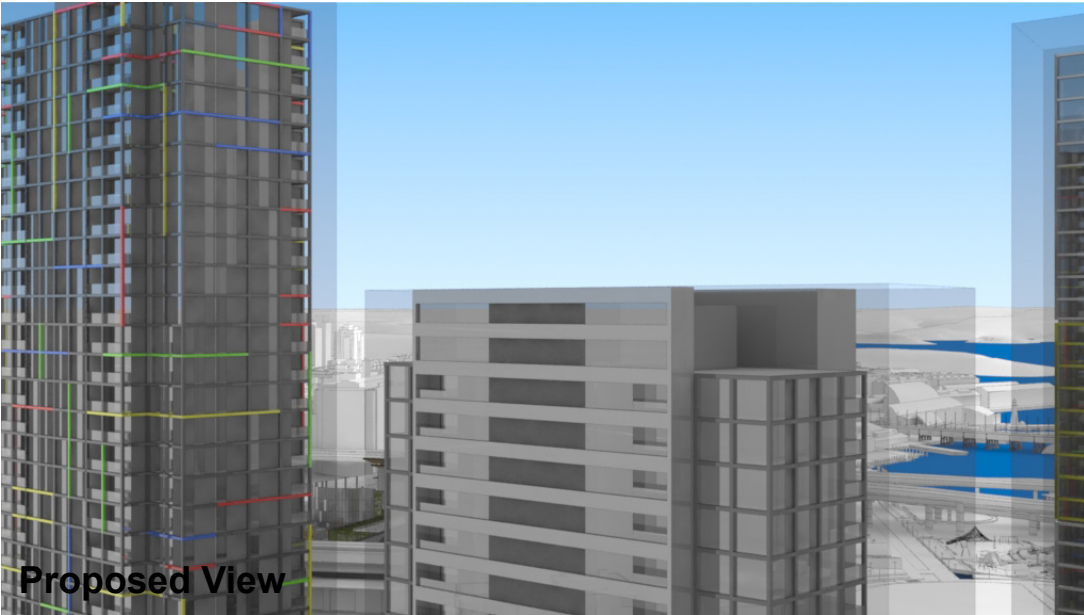
Key Building

View Direction (50mm Camera)

Building envelope in the Haymarket Precinct (Subject of this DA)



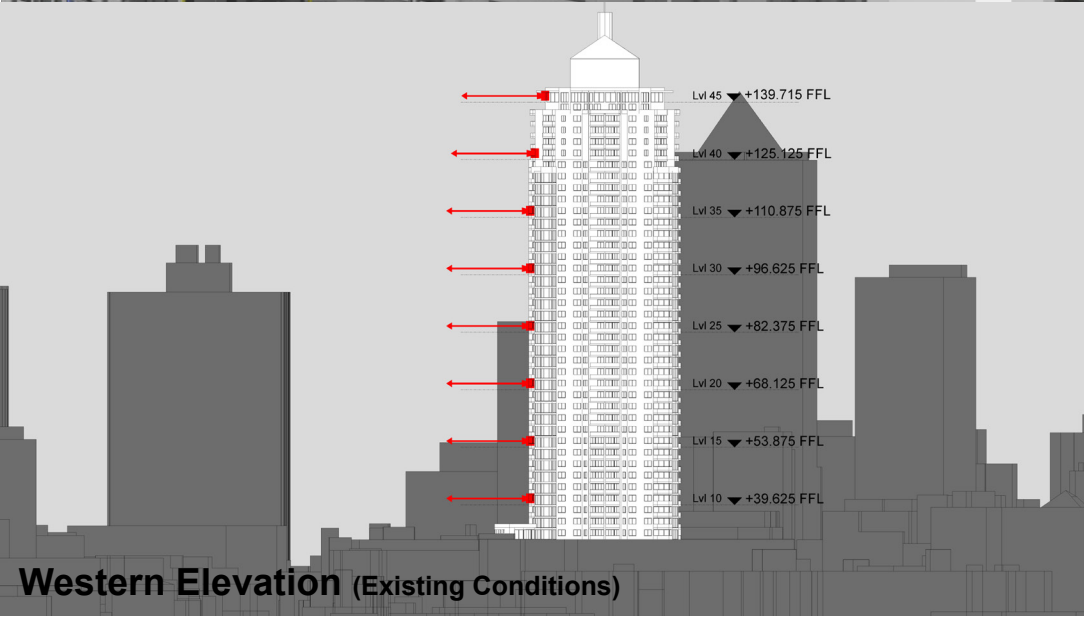
Existing View



Proposed View



Plan (Existing Conditions)



Western Elevation (Existing Conditions)

Peak Apartments

Position: P3B

Level: 25

RL: 83.975 (Camera Height)

FOR INFORMATION ONLY

Illustrative designs of built forms in the Haymarket precinct do not form part of this development application (and will be the subject of separate development assessment processes) and is shown for information and broader illustrative purposes.

These images are produced here for view analysis purposes only.

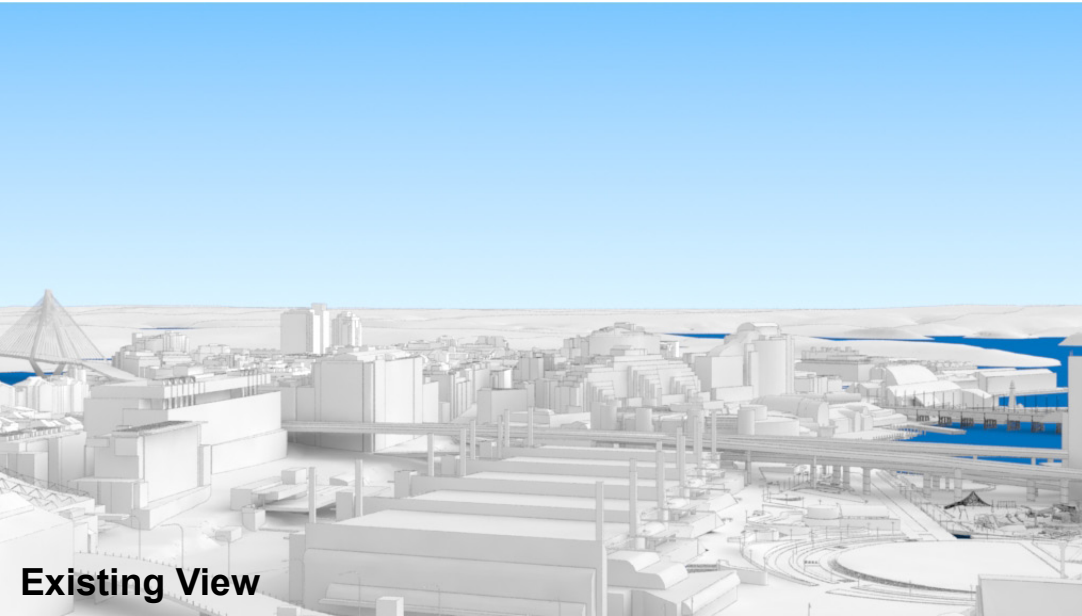
LEGEND:

117

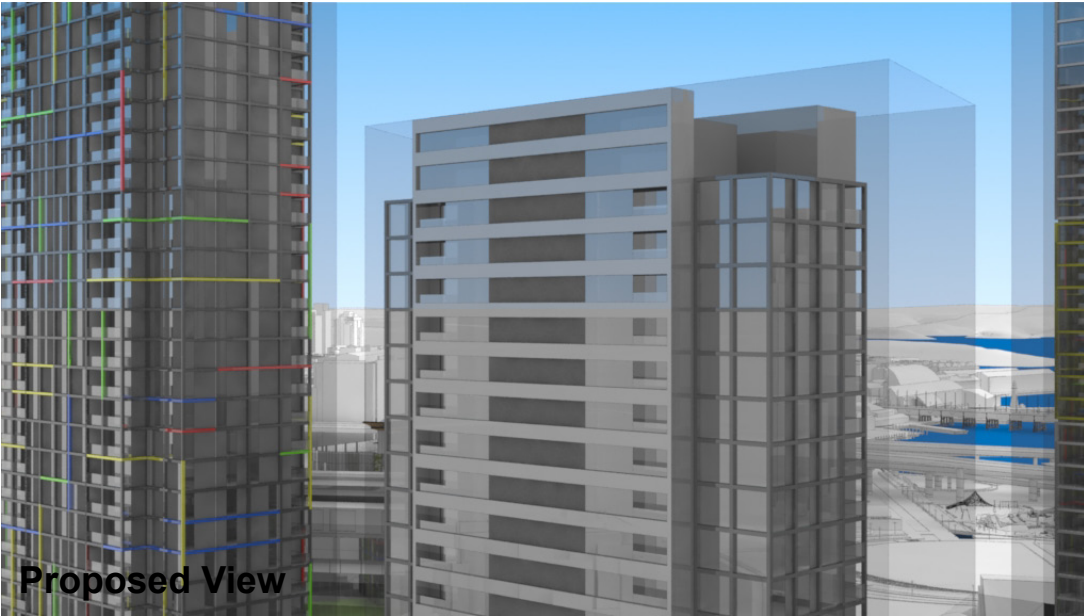
Key Building

View Direction (50mm Camera)

Building envelope in the Haymarket Precinct (Subject of this DA)



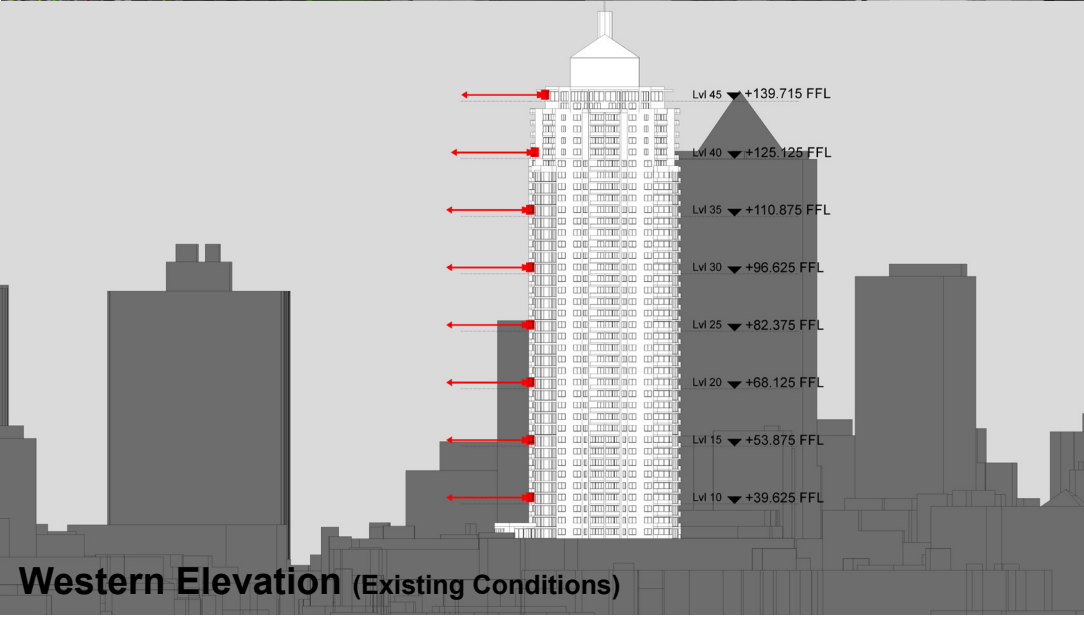
Existing View



Proposed View



Plan (Existing Conditions)



Western Elevation (Existing Conditions)

Peak Apartments

Position: P3B

Level: 20

RL: 69.725 (Camera Height)

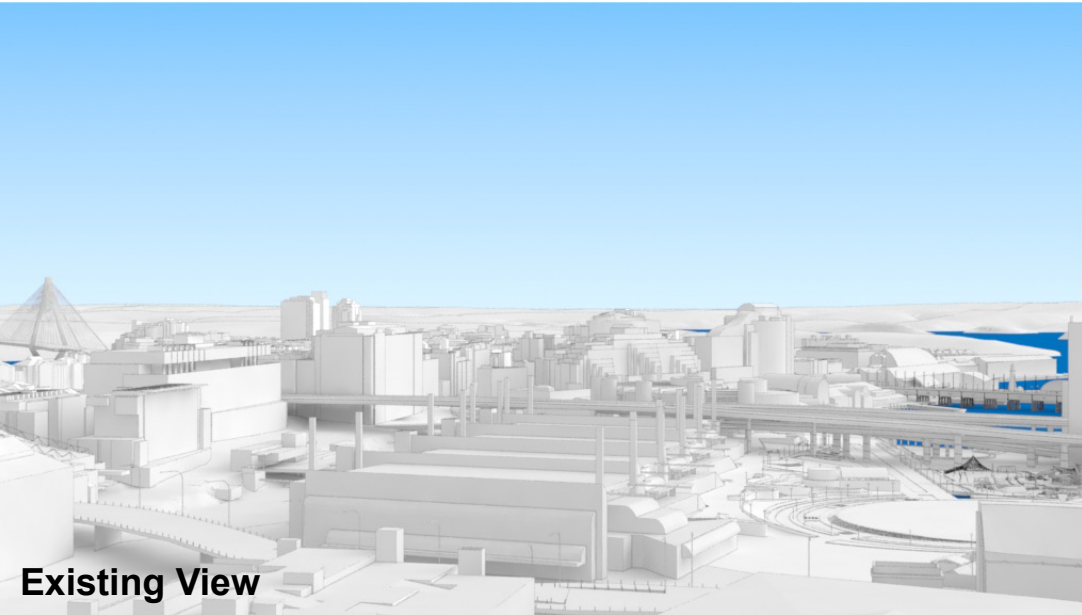
FOR INFORMATION ONLY

Illustrative designs of built forms in the Haymarket precinct do not form part of this development application (and will be the subject of separate development assessment processes) and is shown for information and broader illustrative purposes.

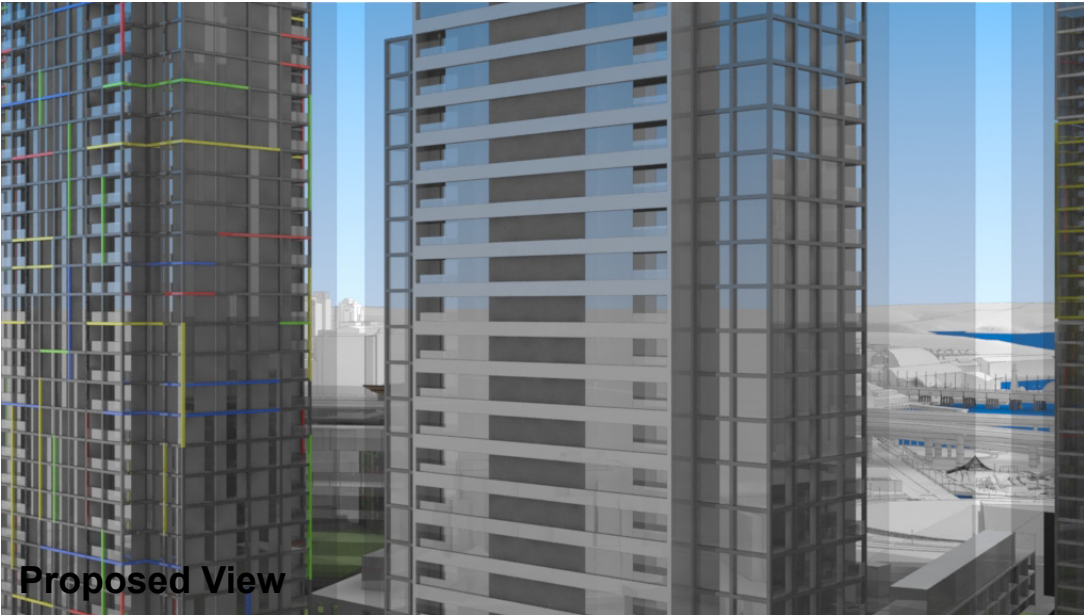
These images are produced here for view analysis purposes only.

LEGEND: 118

- Key Building
- View Direction (50mm Camera)
- Building envelope in the Haymarket Precinct (Subject of this DA)



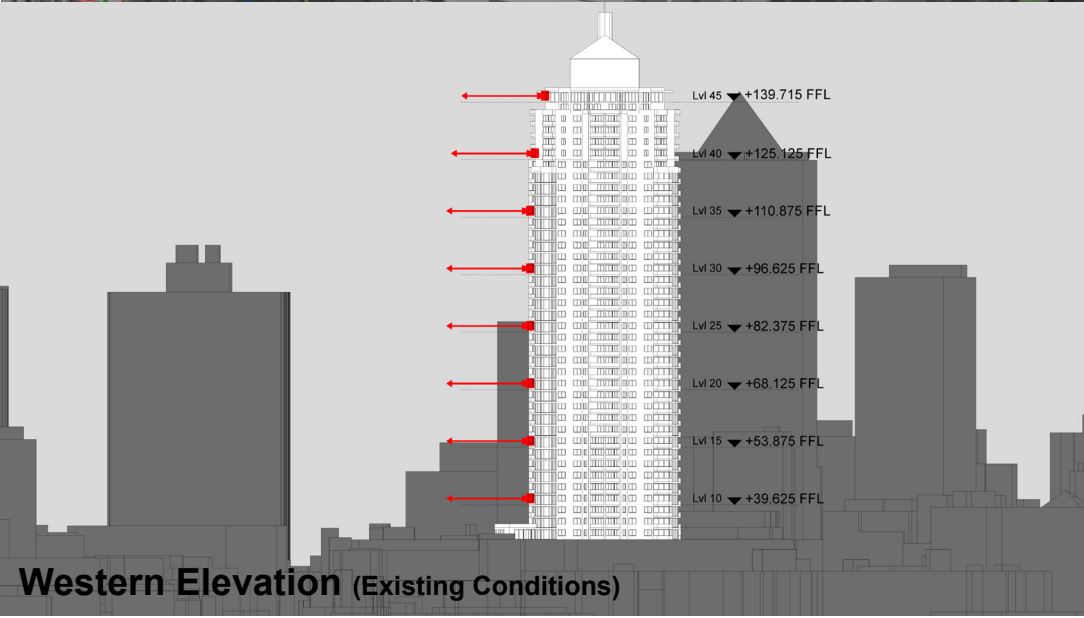
Existing View



Proposed View



Plan (Existing Conditions)



Western Elevation (Existing Conditions)

Peak Apartments

Position: P3B

Level: 15

RL: 55.475 (Camera Height)

FOR INFORMATION ONLY

Illustrative designs of built forms in the Haymarket precinct do not form part of this development application (and will be the subject of separate development assessment processes) and is shown for information and broader illustrative purposes.

These images are produced here for view analysis purposes only.

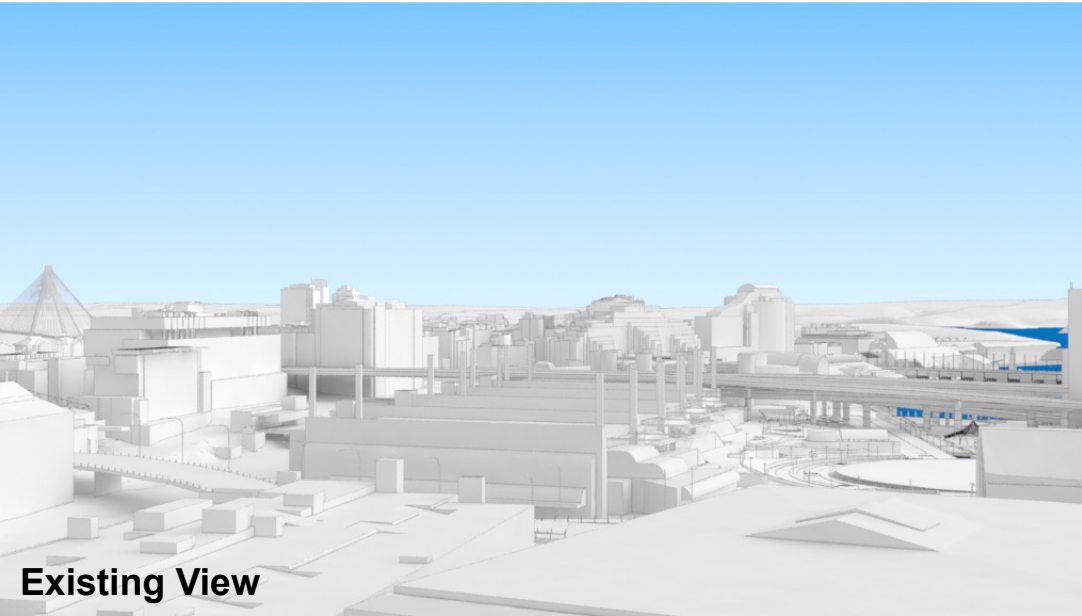
LEGEND:

119

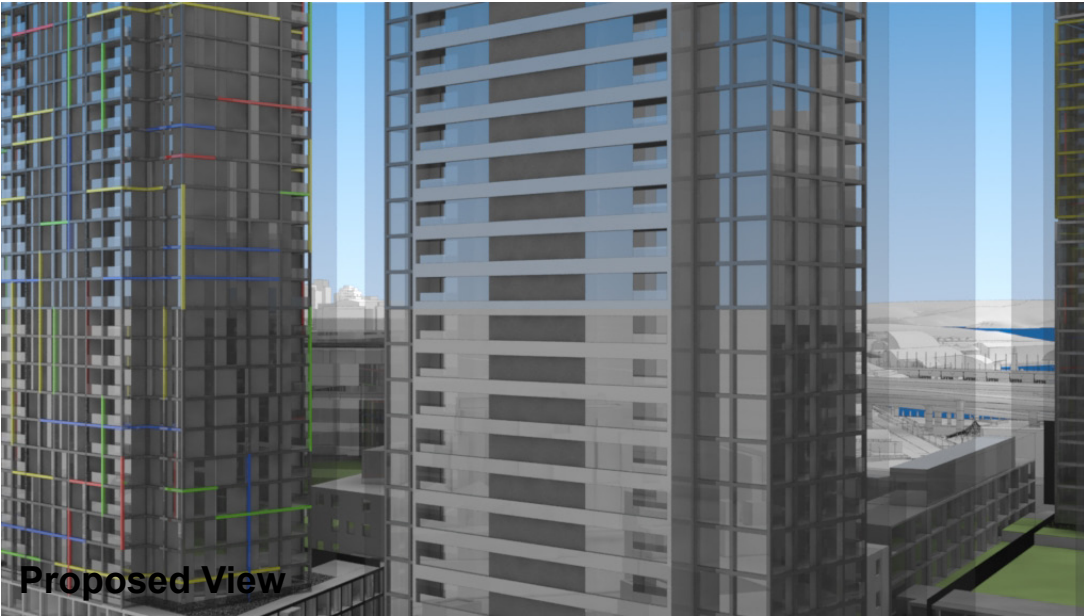
Key Building

View Direction (50mm Camera)

Building envelope in the Haymarket Precinct (Subject of this DA)



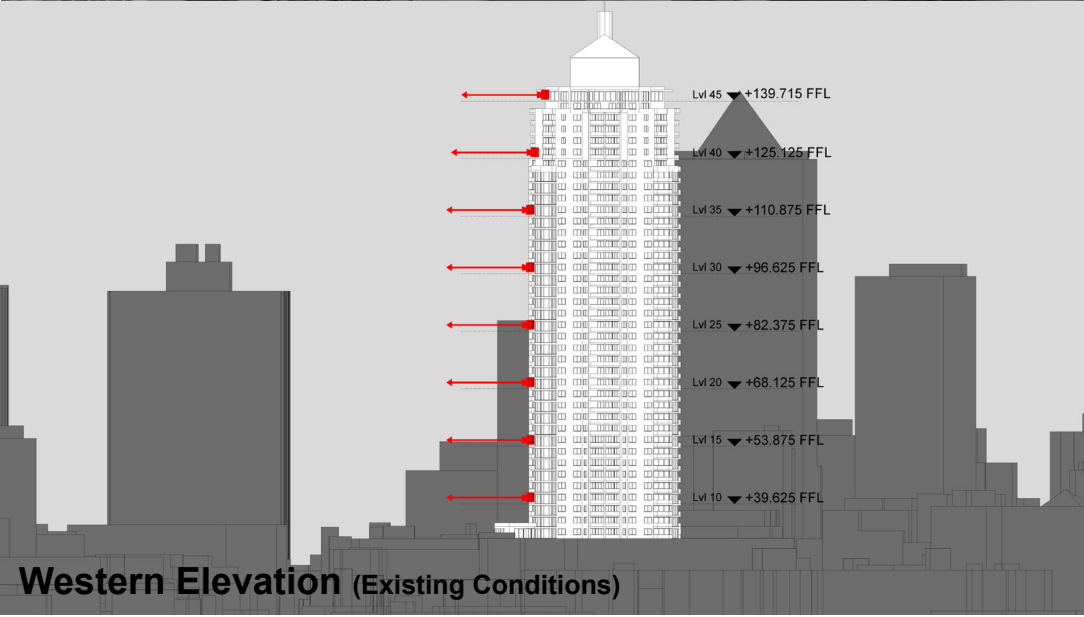
Existing View



Proposed View



Plan (Existing Conditions)



Western Elevation (Existing Conditions)

Peak Apartments

Position: P3B

Level: 10

RL: 41.225 (Camera Height)

FOR INFORMATION ONLY

Illustrative designs of built forms in the Haymarket precinct do not form part of this development application (and will be the subject of separate development assessment processes) and is shown for information and broader illustrative purposes.

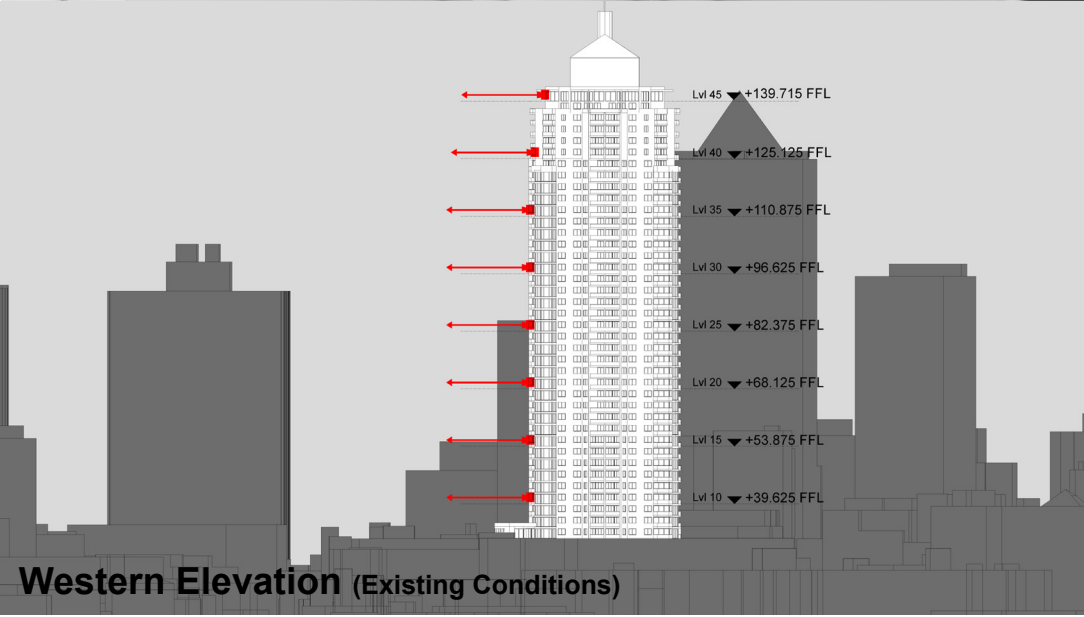
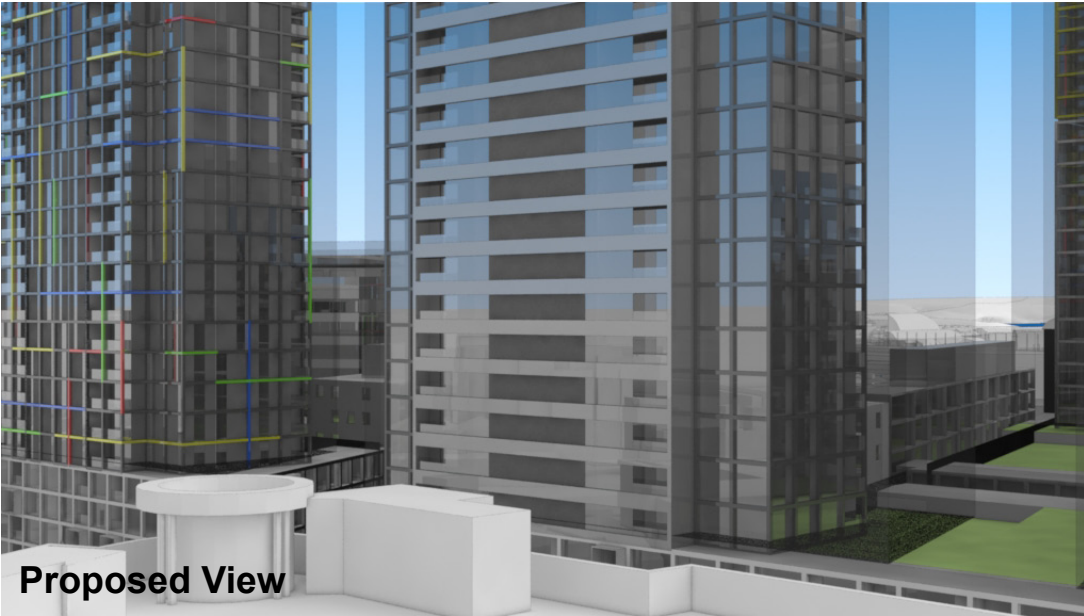
These images are produced here for view analysis purposes only.

LEGEND: 120

Key Building

View Direction (50mm Camera)

Building envelope in the Haymarket Precinct (Subject of this DA)



Peak Apartments

Position: P3C

Level: 45

RL: 140.975 (Camera Height)

FOR INFORMATION ONLY

Illustrative designs of built forms in the Haymarket precinct do not form part of this development application (and will be the subject of separate development assessment processes) and is shown for information and broader illustrative purposes.

These images are produced here for view analysis purposes only.

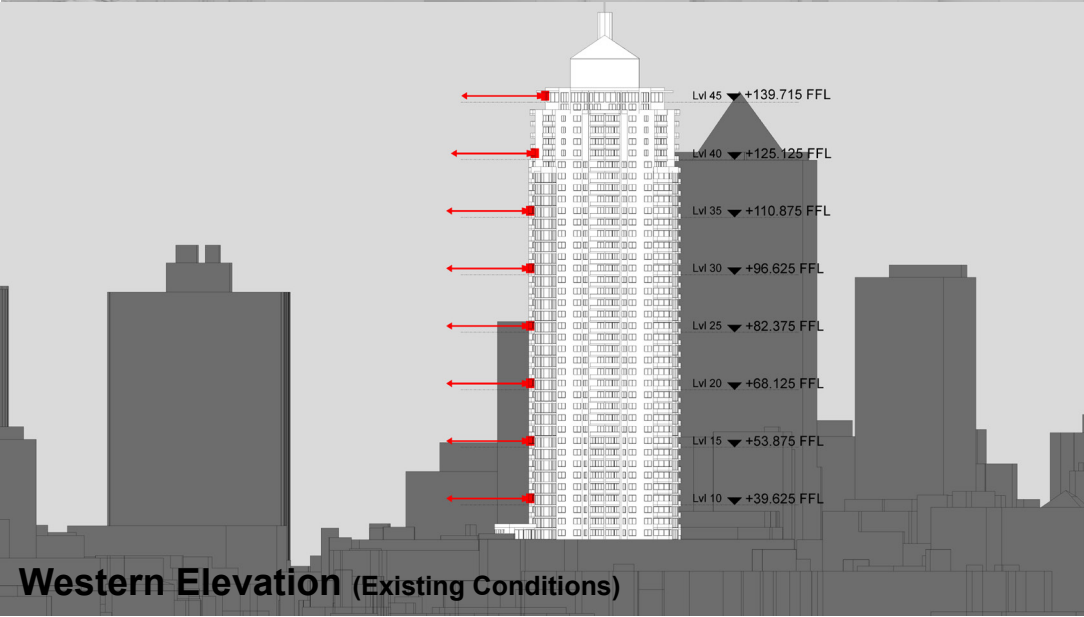
LEGEND:

121

Key Building

View Direction (50mm Camera)

Building envelope in the Haymarket Precinct (Subject of this DA)



Peak Apartments

Position: P3C

Level: 40

RL: 126.725 (Camera Height)

FOR INFORMATION ONLY

Illustrative designs of built forms in the Haymarket precinct do not form part of this development application (and will be the subject of separate development assessment processes) and is shown for information and broader illustrative purposes.

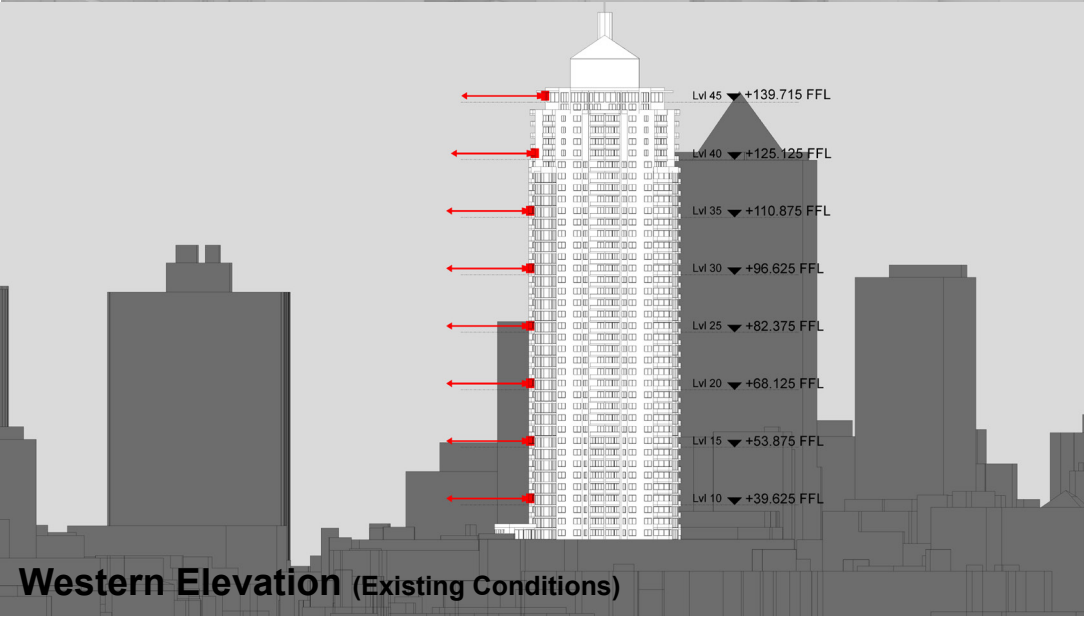
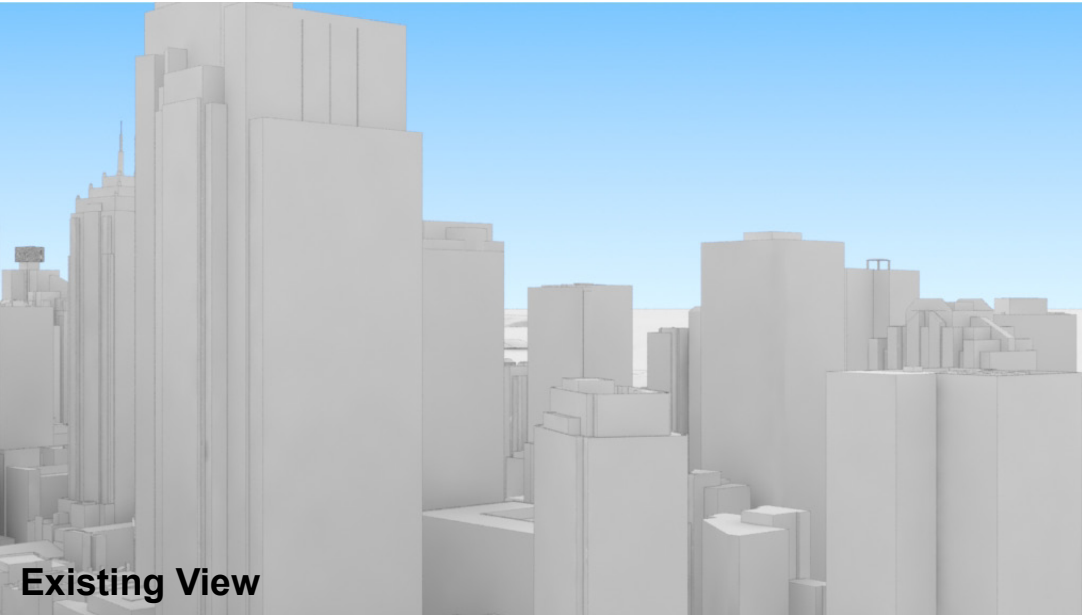
These images are produced here for view analysis purposes only.

LEGEND: 122

Key Building

View Direction (50mm Camera)

Building envelope in the Haymarket Precinct (Subject of this DA)



Peak Apartments

Position: P3C

Level: 35

RL: 112.475 (Camera Height)

FOR INFORMATION ONLY

Illustrative designs of built forms in the Haymarket precinct do not form part of this development application (and will be the subject of separate development assessment processes) and is shown for information and broader illustrative purposes.

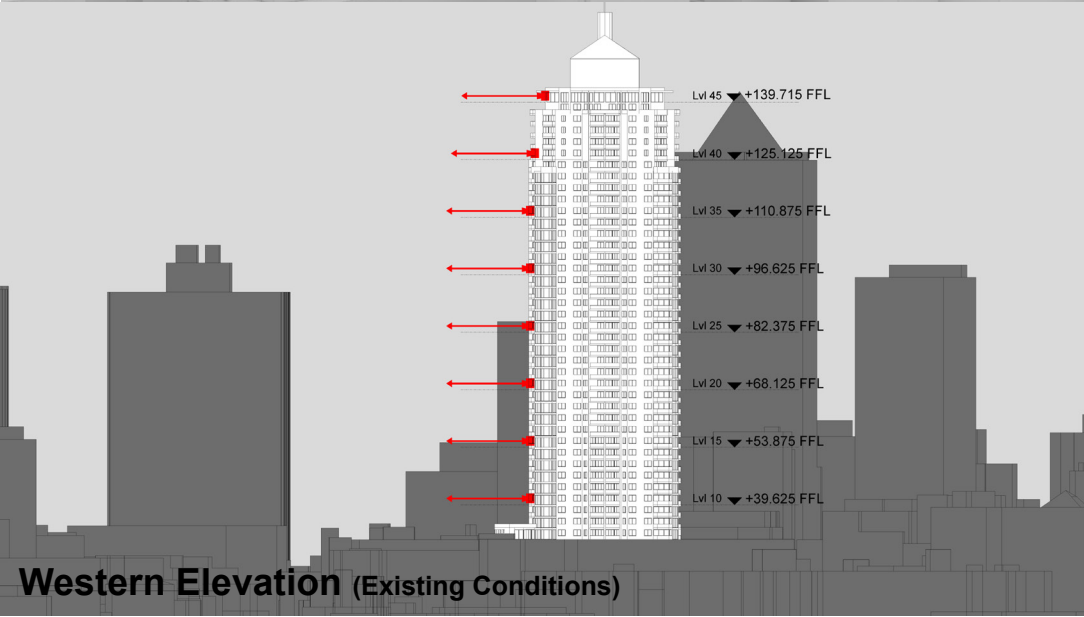
These images are produced here for view analysis purposes only.

LEGEND: 123

Key Building

View Direction (50mm Camera)

Building envelope in the Haymarket Precinct (Subject of this DA)



These images are produced here for view analysis purposes only.

- Building envelope in the Haymarket Precinct (Subject of this DA)

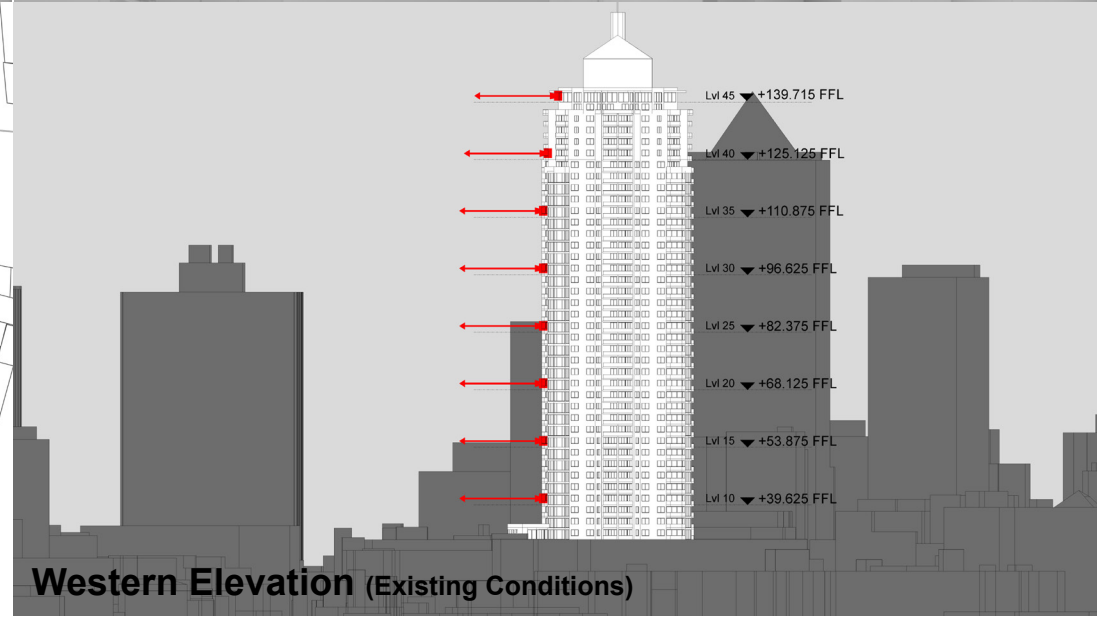


Existing View

Proposed View



Plan (Existing Conditions)



Western Elevation (Existing Conditions)

Peak Apartments

Position: P3C

Level: 25

RL: 83.975 (Camera Height)

FOR INFORMATION ONLY

Illustrative designs of built forms in the Haymarket precinct do not form part of this development application (and will be the subject of separate development assessment processes) and is shown for information and broader illustrative purposes.

These images are produced here for view analysis purposes only.

LEGEND: 125

Key Building

View Direction (50mm Camera)

Building envelope in the Haymarket Precinct (Subject of this DA)



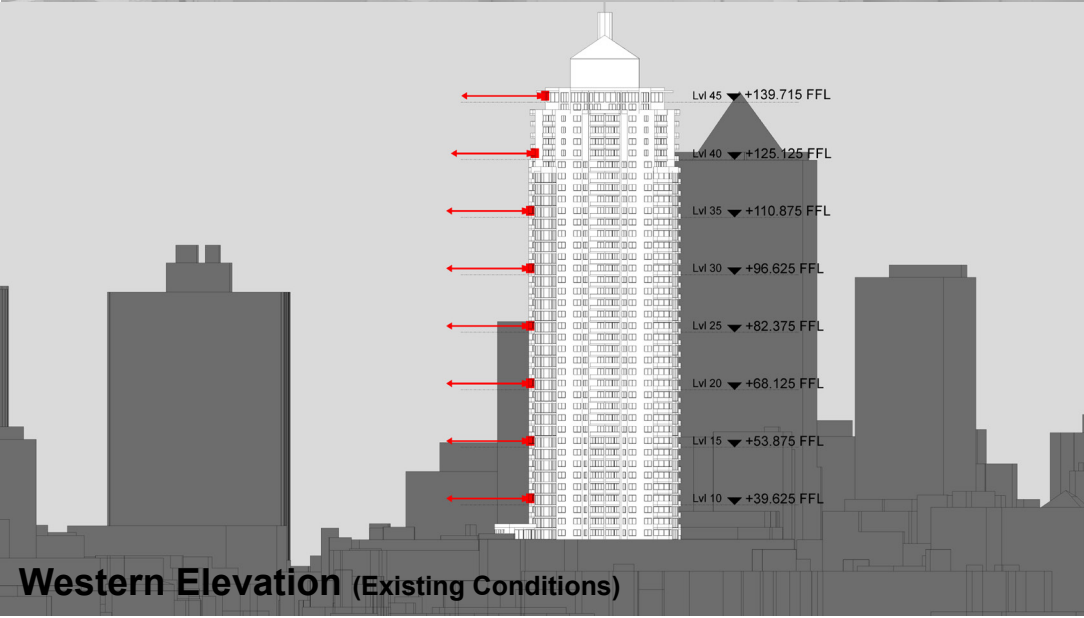
Existing View



Proposed View



Plan (Existing Conditions)



Western Elevation (Existing Conditions)

Peak Apartments

Position: P3C

Level: 20

RL: 69.725 (Camera Height)

FOR INFORMATION ONLY

Illustrative designs of built forms in the Haymarket precinct do not form part of this development application (and will be the subject of separate development assessment processes) and is shown for information and broader illustrative purposes.

These images are produced here for view analysis purposes only.

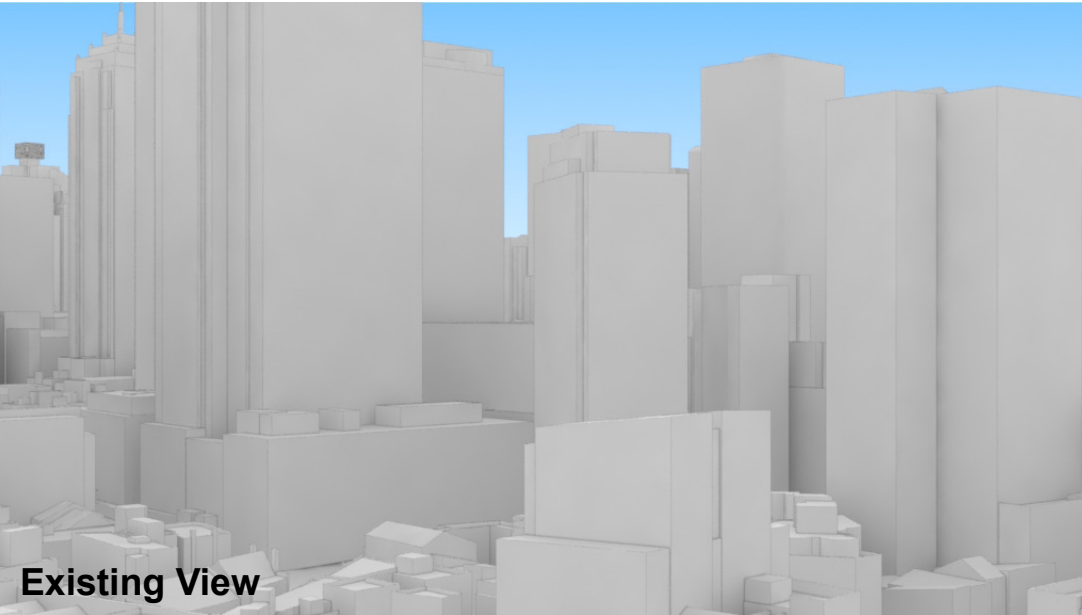
LEGEND:

126

Key Building

View Direction (50mm Camera)

Building envelope in the Haymarket Precinct (Subject of this DA)



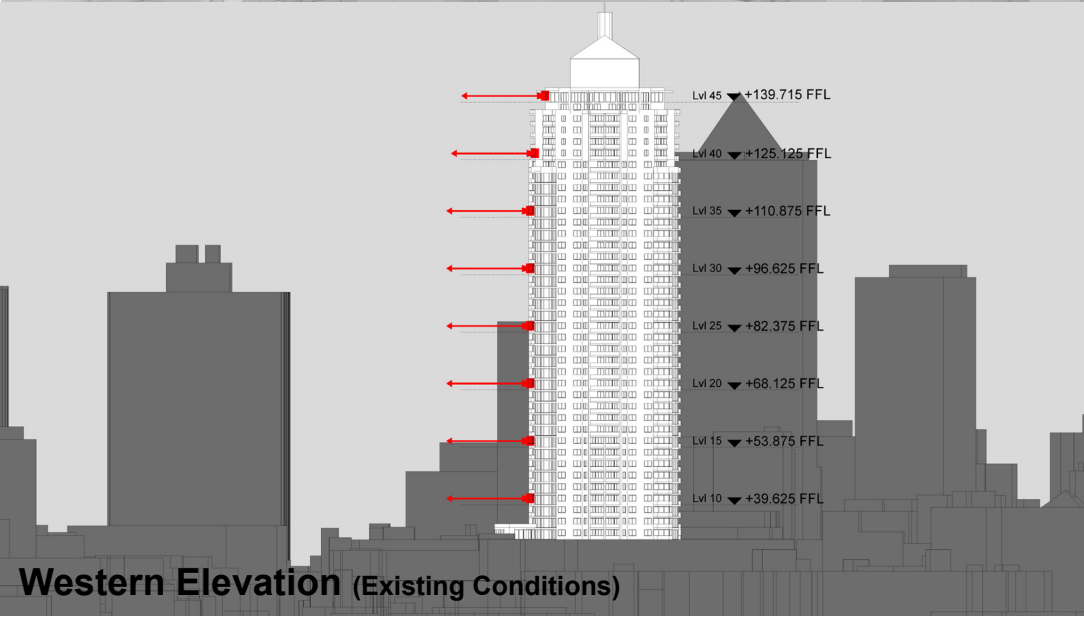
Existing View



Proposed View



Plan (Existing Conditions)



Western Elevation (Existing Conditions)

Peak Apartments

Position: P3C

Level: 15

RL: 55.475 (Camera Height)

FOR INFORMATION ONLY

Illustrative designs of built forms in the Haymarket precinct do not form part of this development application (and will be the subject of separate development assessment processes) and is shown for information and broader illustrative purposes.

These images are produced here for view analysis purposes only.

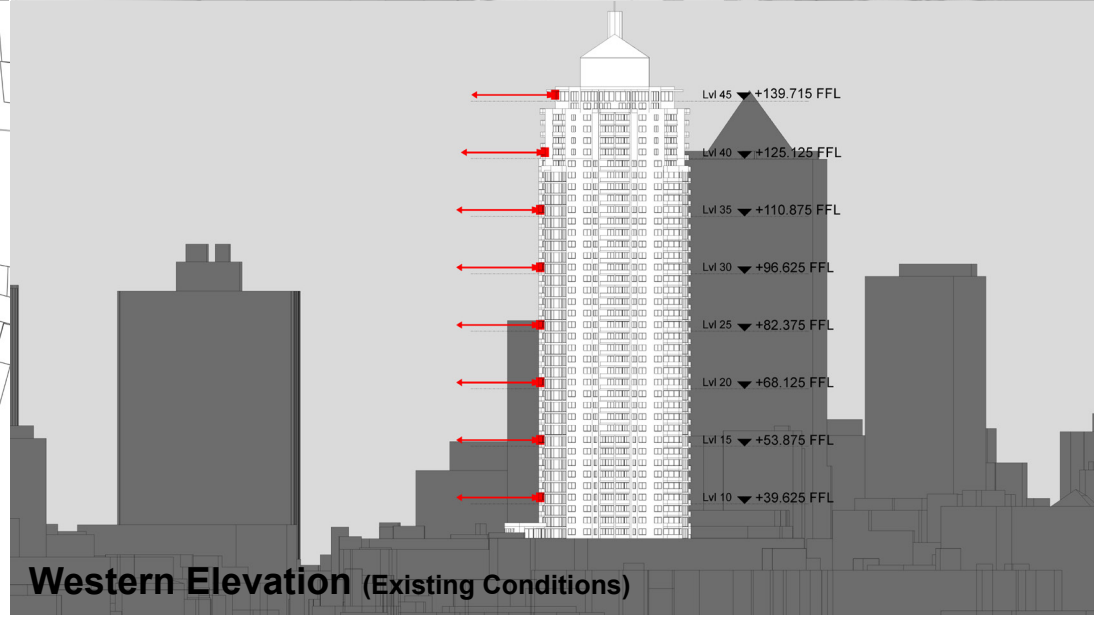
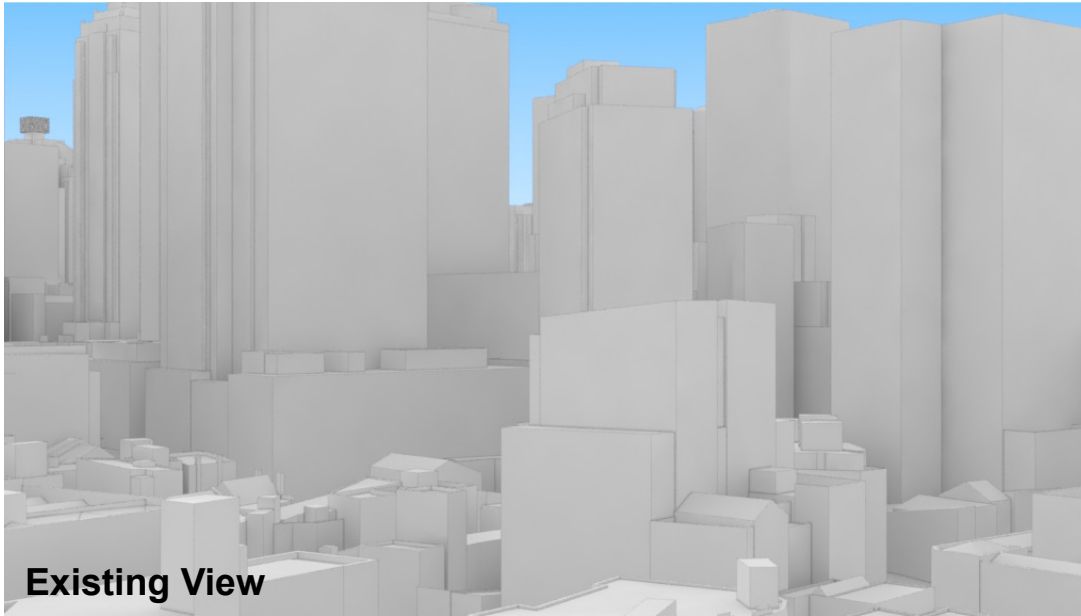
LEGEND:

127

 Key Building

← View Direction (50mm Camera)

■ Building envelope in the Haymarket Precinct (Subject of this DA)



Peak Apartments

Position: P3C

Level: 10

RL: 41.225 (Camera Height)

FOR INFORMATION ONLY

Illustrative designs of built forms in the Haymarket precinct do not form part of this development application (and will be the subject of separate development assessment processes) and is shown for information and broader illustrative purposes.

These images are produced here for view analysis purposes only.

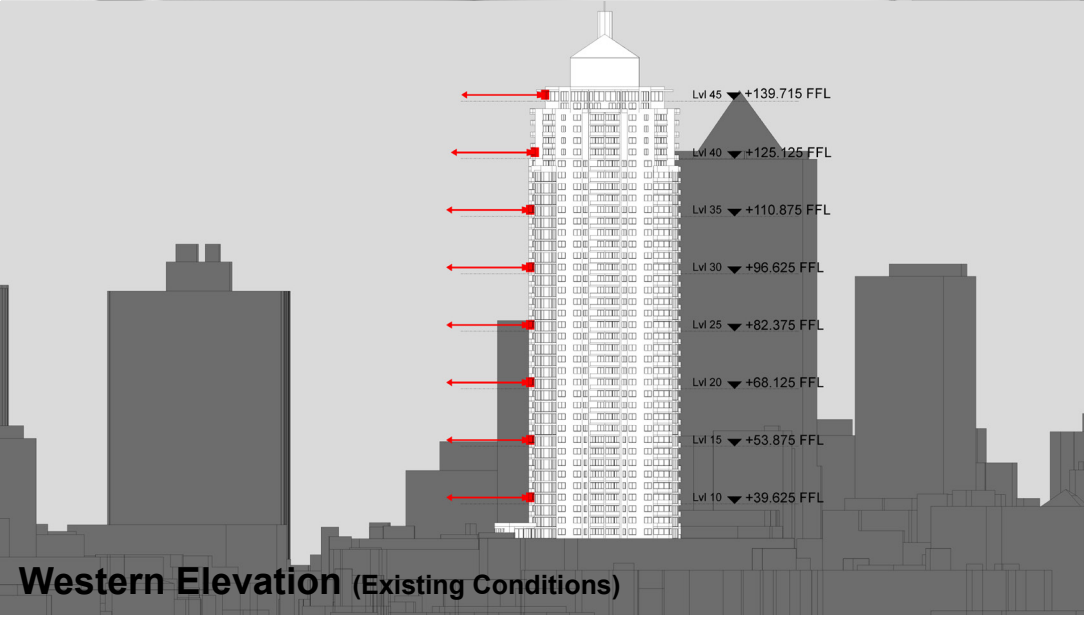
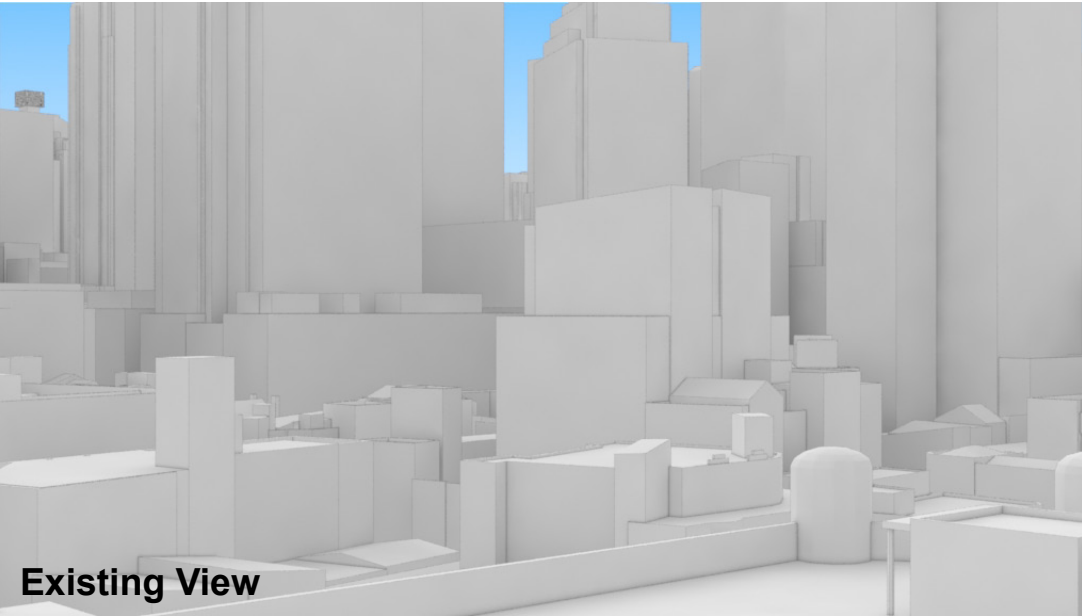
LEGEND:

128

Key Building



View Direction (50mm Camera)

Building envelope in the Haymarket Precinct (Subject of this DA)





"THE PEAK APARTMENTS"

			<p>COPYRIGHT © RYGATE & COMPANY PTY. LIMITED 2013. NO PART OF THIS PLAN MAY BE REPRODUCED, COMMUNICATED, STORED IN A RETRIEVAL SYSTEM OR TRANSMITTED IN ANY FORM WITHOUT THE WRITTEN PERMISSION OF THE COPYRIGHT OWNER EXCEPT AS PERMITTED BY THE COPYRIGHT ACT 1968. ANY PERMITTED DOWNLOADING, ELECTRONIC STORAGE, DISPLAY, PRINT, COPY, REPRODUCTION OR COMMUNICATION OF THIS SURVEY SHOULD CONTAIN NO ALTERATION OR ADDITION TO THE ORIGINAL SURVEY.</p>			 <p>REDUCTION RATIO 1:100 @ A3</p>			 <p>Rygate & Company Pty Limited P.W. Rygate & West ABN 61 001 204 897 Level 9, 89 York St Sydney NSW 2000 P +61 2 9262 6800 F +61 2 9262 6843 E surveyors@rygate.com.au W rygate.com.au</p>			<p>CLIENT</p> <p>LEND LEASE</p>		<p>PLAN SHOWING M.G.A. & A.H.D. VALUES FOR CAMERA LOCATIONS</p>			
			<p>DATUM : AUSTRALIAN HEIGHT DATUM CONTOUR INTERVAL : N/A ORIGIN OF LEVELS : P.M.55082 R.L.3.288 A.H.D.</p>			<p>SUBDIVISION STRATA PLANS STRATUM SUBDIVISION LEASE PLANS TOPOGRAPHIC SURVEYS GPS SURVEYS 3D MODELLING RACECOURSE DESIGN PROJECT MANAGEMENT SUN SHADOW DIAGRAMS</p>			<p>LOCALITY</p> <p>DARLING HARBOUR</p>		<p>L.G.A.</p> <p>SYDNEY</p>		<p>REFERENCE No.</p> <p>75706</p>	<p>PLAN No.</p>	<p>DATE</p> <p>6/2/2013</p>	<p>SHEET No. 3</p> <p>OF 13 SHEETS</p>	
B	12/3/2013	SHEET LAYOUT AMENDED TO SINGLE PHOTO PER PAGE															
A	18/2/2013	HARRIS STREET PROPERTY AND NOVOTEL LOCATIONS ADDED															
REV.	DATE	AMENDMENTS															

