

Oaks Goldsbrough Apartments

Position: P1A

Level: 10

RL: 44.790 (Camera Height)

FOR INFORMATION ONLY

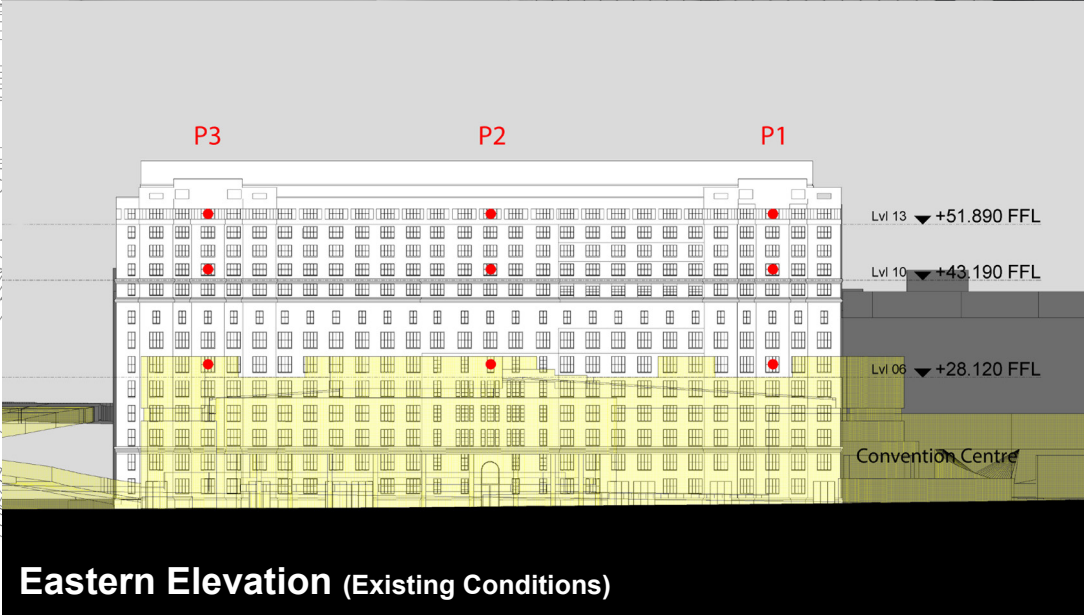
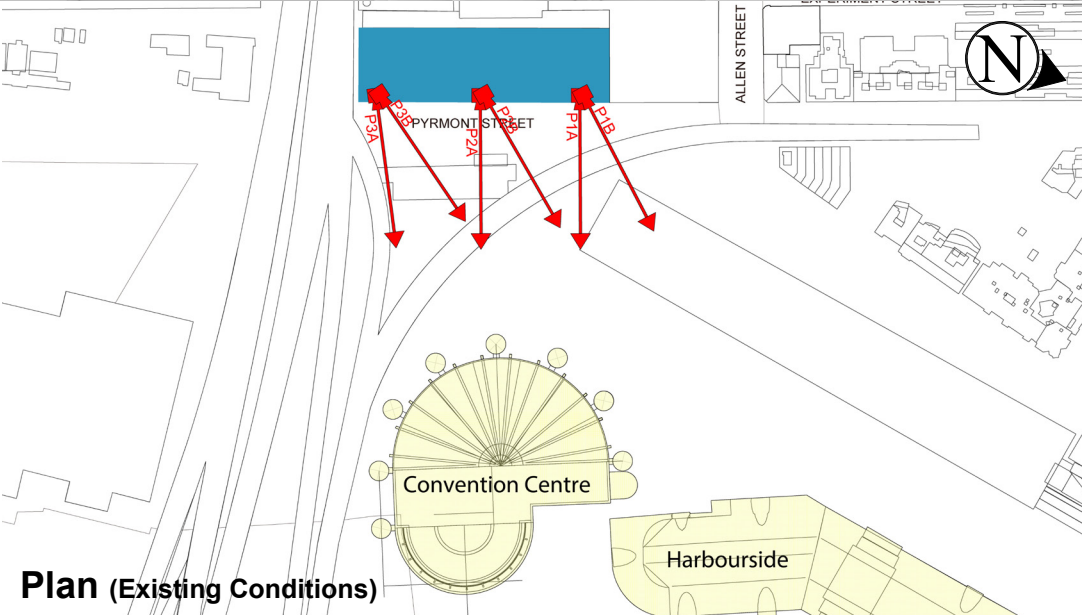
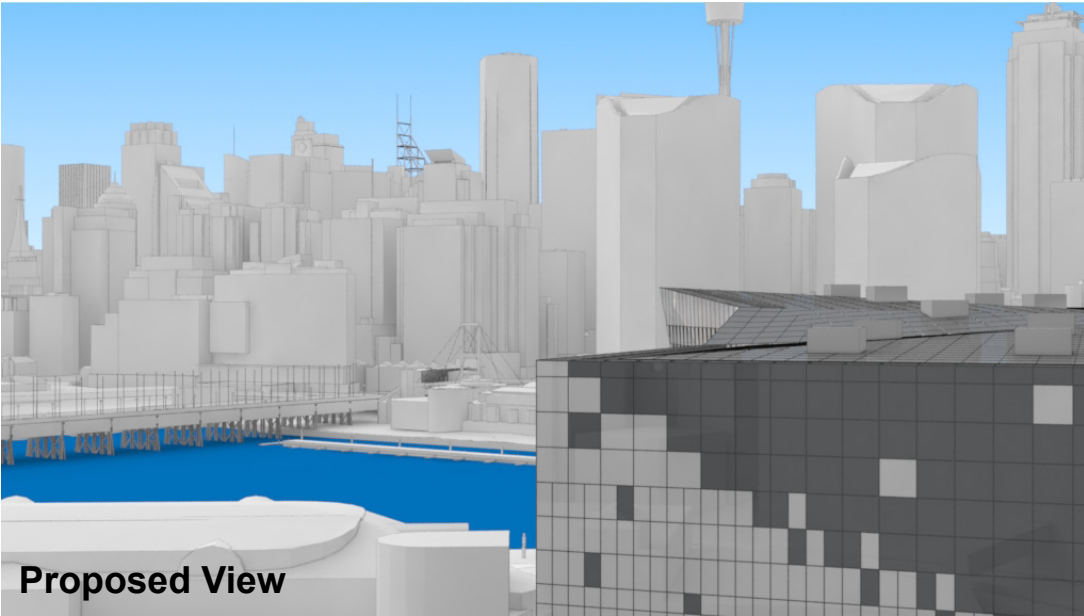
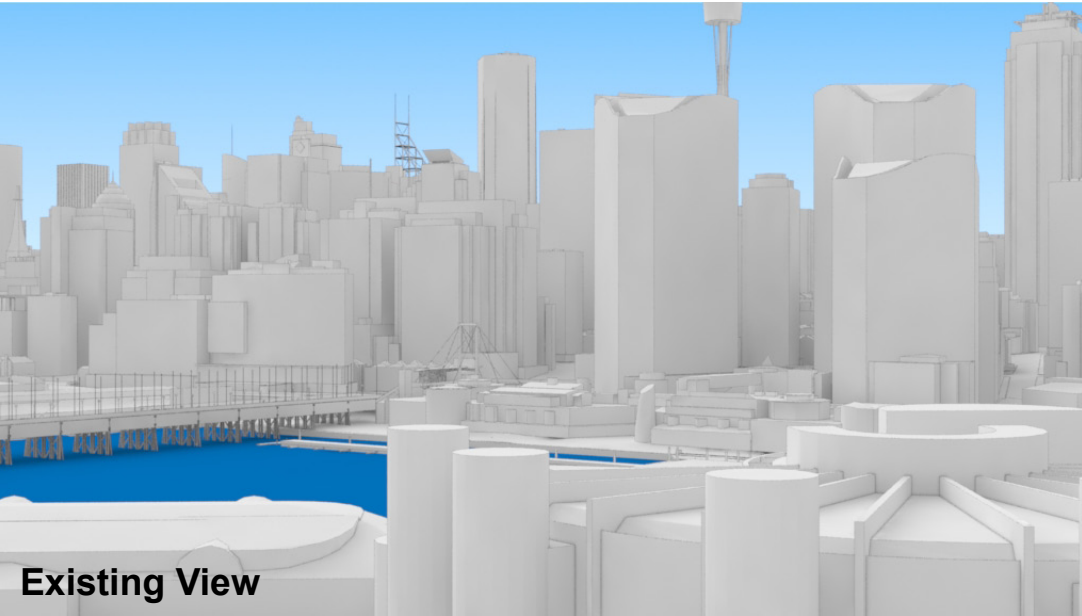
Illustrative designs of built forms in the Haymarket precinct do not form part of this development application (and will be the subject of separate development assessment processes) and is shown for information and broader illustrative purposes.

These images are produced here for view analysis purposes only.

LEGEND: 28

- Key Building
- Neighbouring Buildings

- View Direction (50mm Camera)
- Camera Position



Oaks Goldsbrough Apartments

Position: P1A

Level: 06

RL: 29.720 (Camera Height)

FOR INFORMATION ONLY

Illustrative designs of built forms in the Haymarket precinct do not form part of this development application (and will be the subject of separate development assessment processes) and is shown for information and broader illustrative purposes.

These images are produced here for view analysis purposes only.

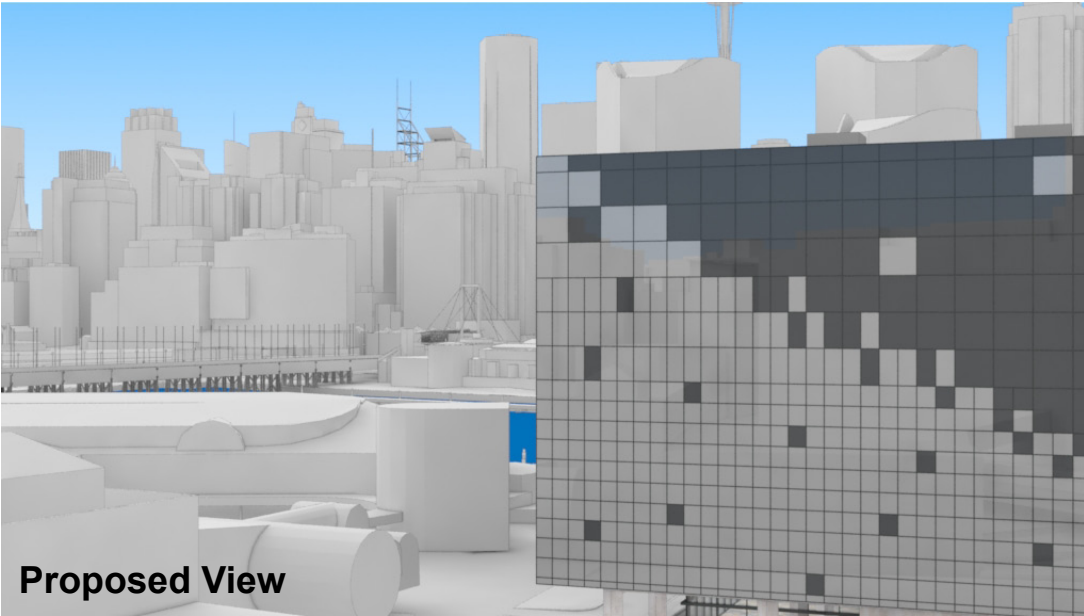
LEGEND: 29

- Key Building
- Neighbouring Buildings

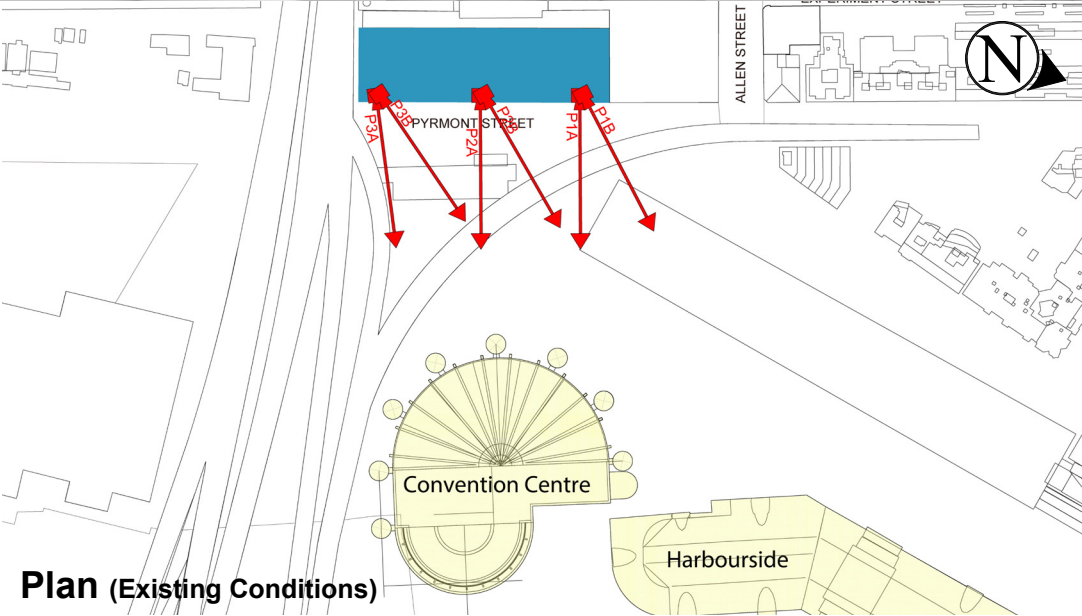
- View Direction (50mm Camera)
- Camera Position



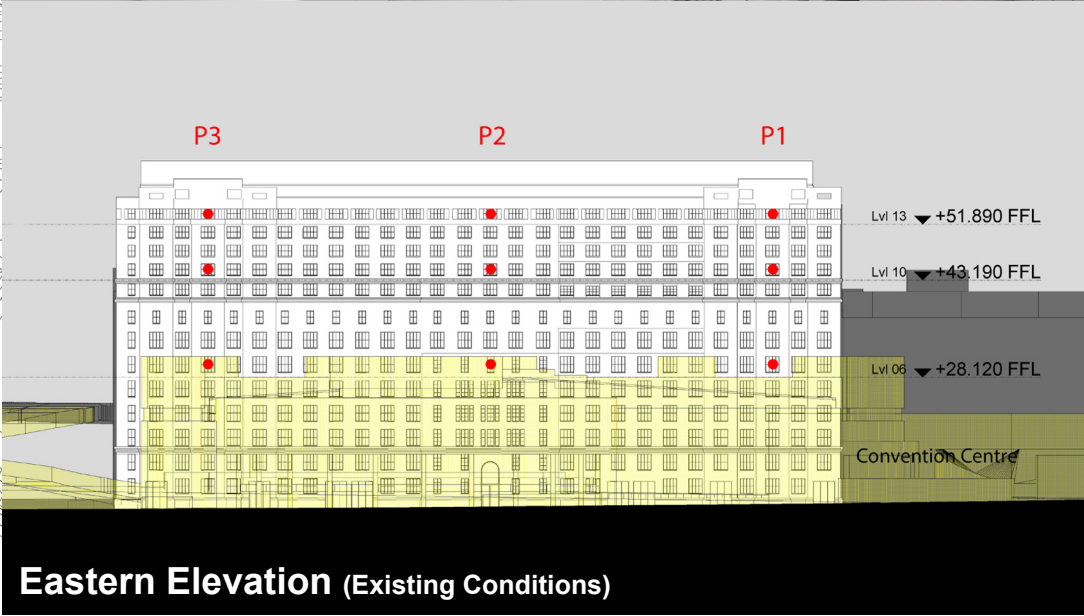
Existing View



Proposed View



Plan (Existing Conditions)



Eastern Elevation (Existing Conditions)

Oaks Goldsbrough Apartments

Position: P1B

Level: 13

RL: 53.49 (Camera Height)

FOR INFORMATION ONLY

Illustrative designs of built forms in the Haymarket precinct do not form part of this development application (and will be the subject of separate development assessment processes) and is shown for information and broader illustrative purposes.
These images are produced here for view analysis purposes only.

LEGEND:

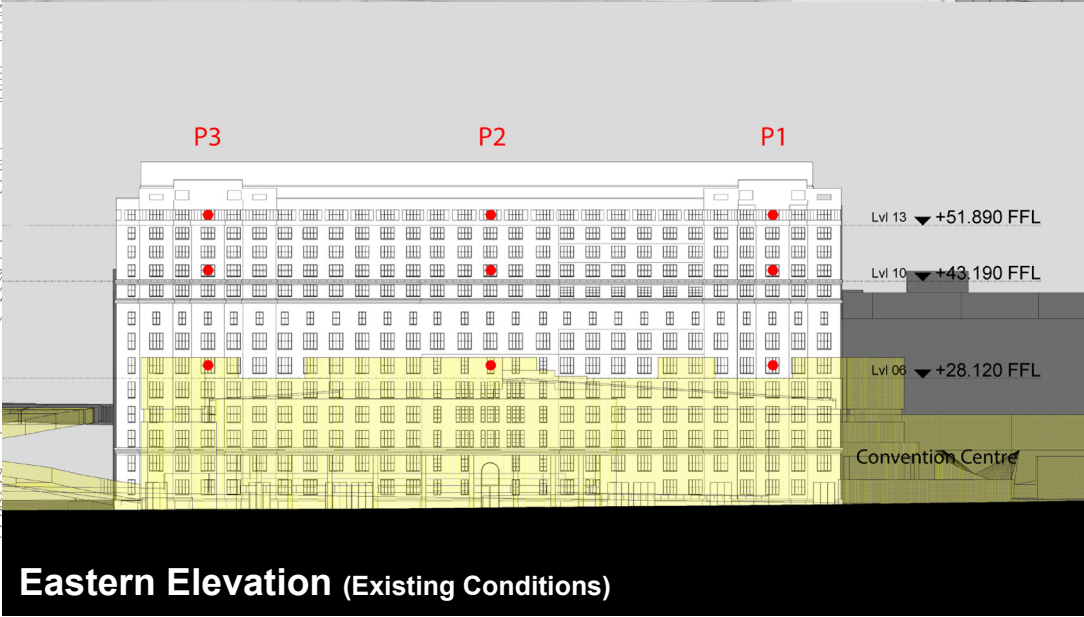
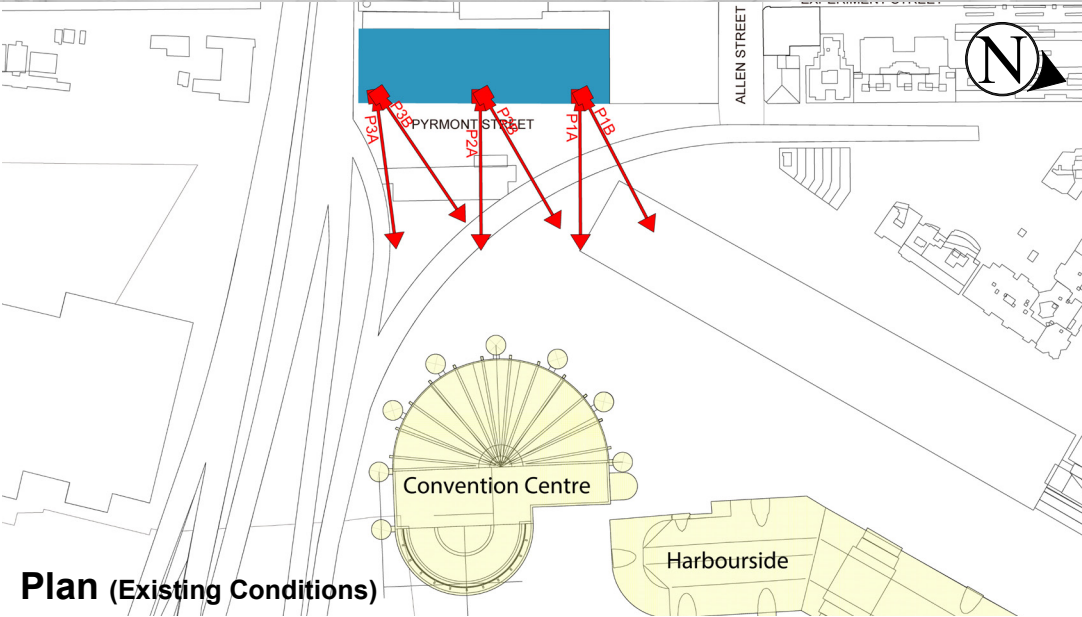
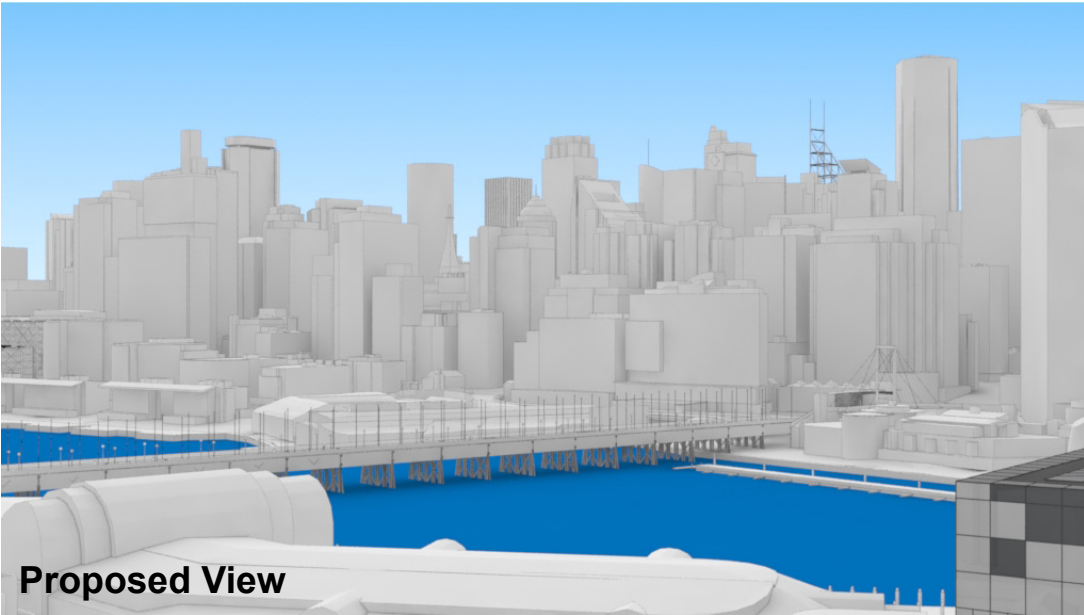
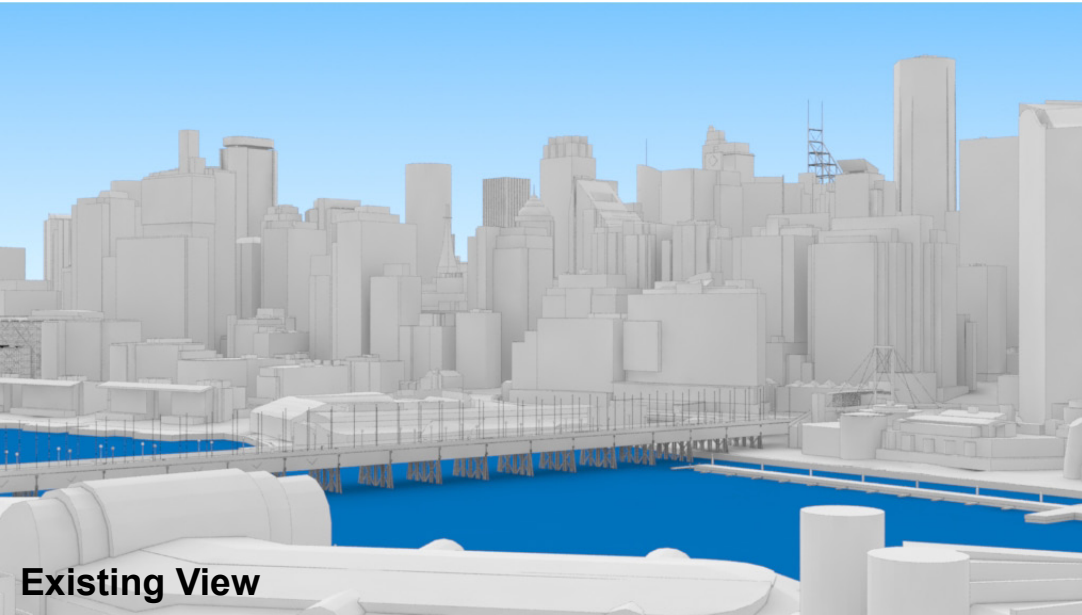
30

Key Building

Neighbouring Buildings

View Direction (50mm Camera)

Camera Position



Oaks Goldsbrough Apartments

Position: P1B

Level: 10

RL: 44.790 (Camera Height)

FOR INFORMATION ONLY

Illustrative designs of built forms in the Haymarket precinct do not form part of this development application (and will be the subject of separate development assessment processes) and is shown for information and broader illustrative purposes.
These images are produced here for view analysis purposes only.

LEGEND:

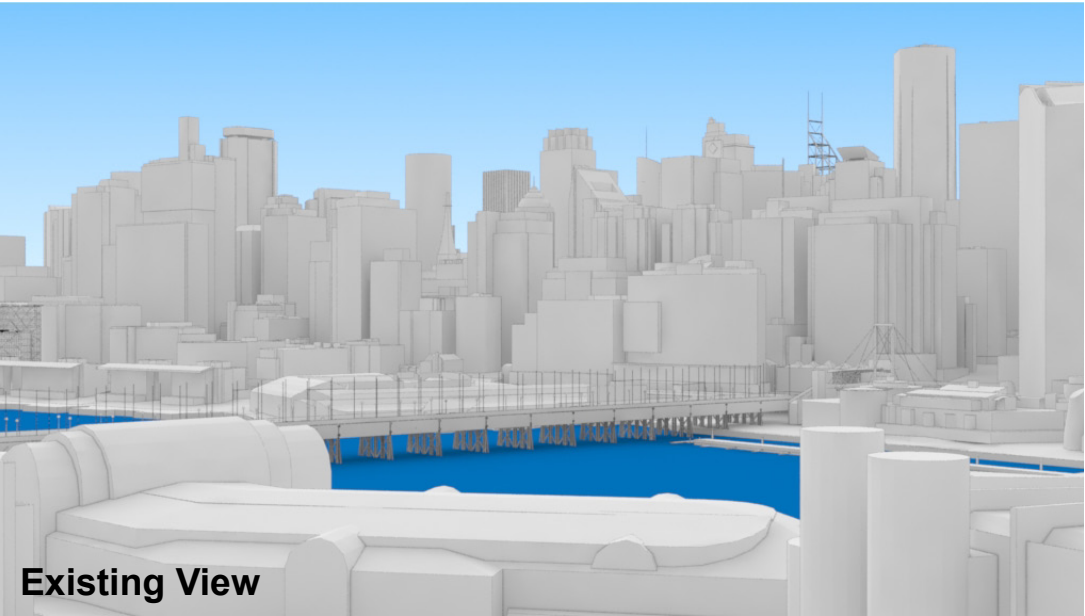
Key Building

Neighbouring Buildings

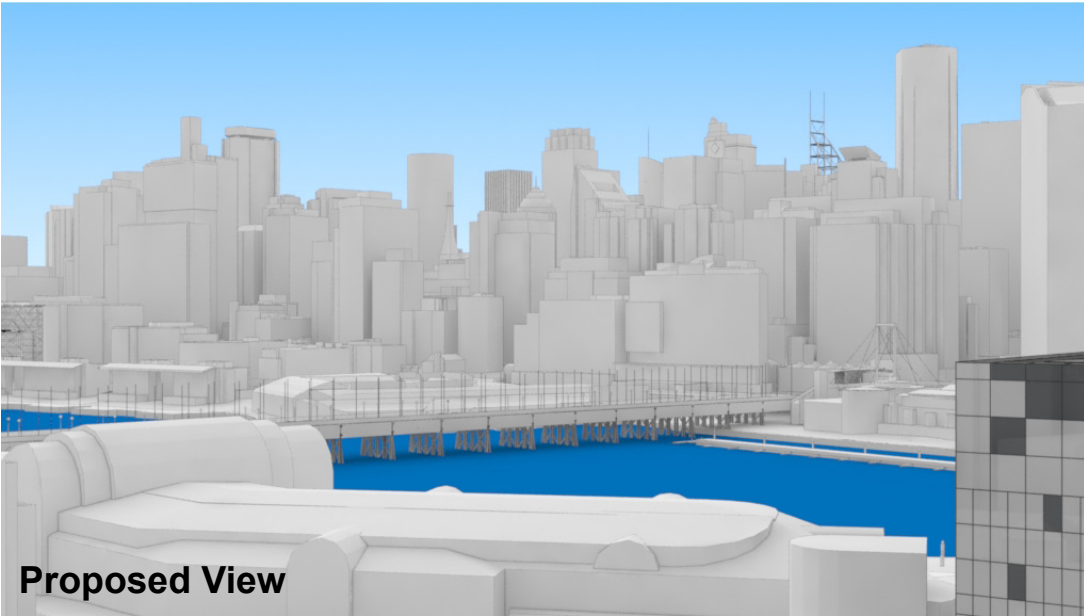
View Direction (50mm Camera)

Camera Position

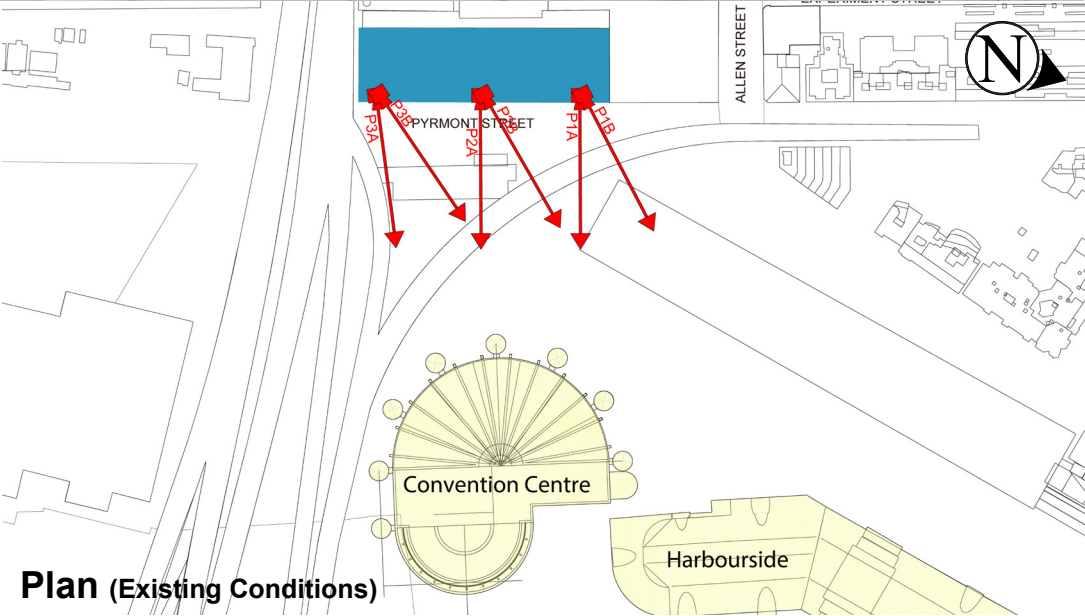
31



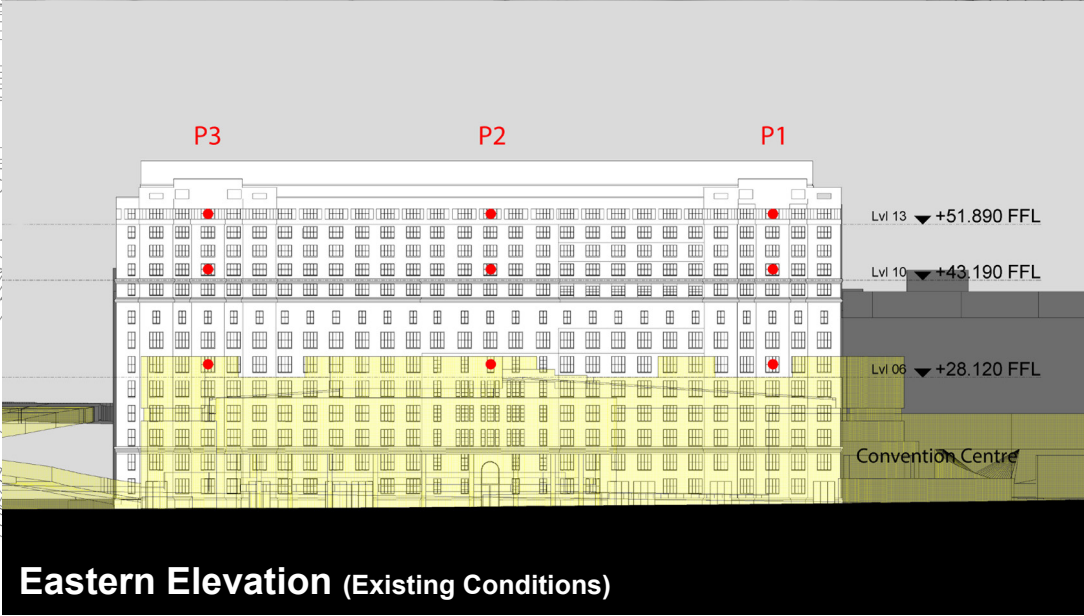
Existing View



Proposed View



Plan (Existing Conditions)



Eastern Elevation (Existing Conditions)

Oaks Goldsbrough Apartments

Position: P1B

Level: 06

RL: 29.720 (Camera Height)

FOR INFORMATION ONLY

Illustrative designs of built forms in the Haymarket precinct do not form part of this development application (and will be the subject of separate development assessment processes) and is shown for information and broader illustrative purposes.

These images are produced here for view analysis purposes only.

LEGEND:

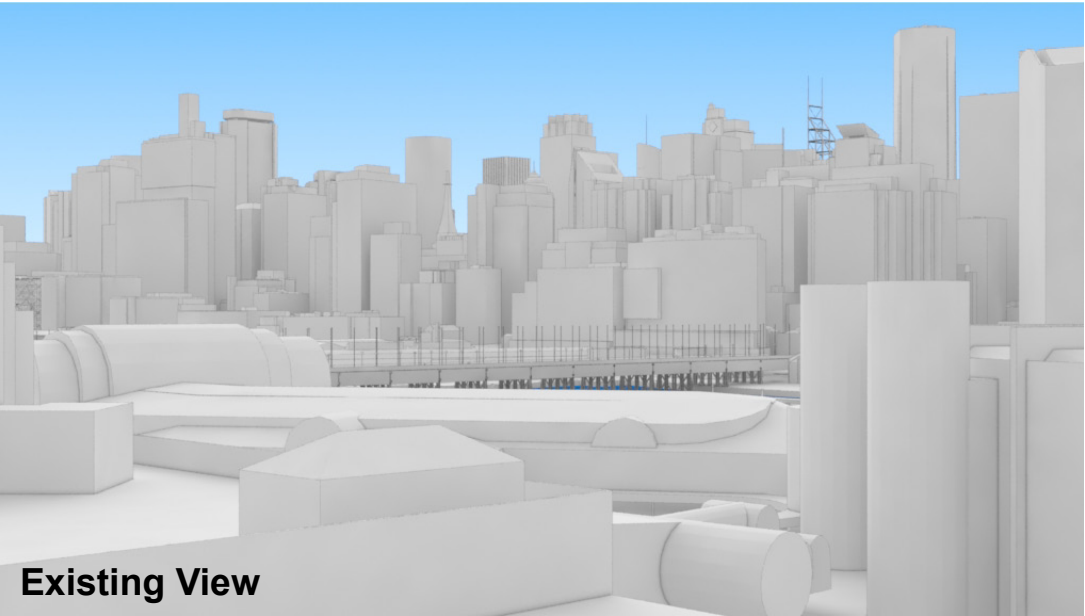
Key Building

Neighbouring Buildings

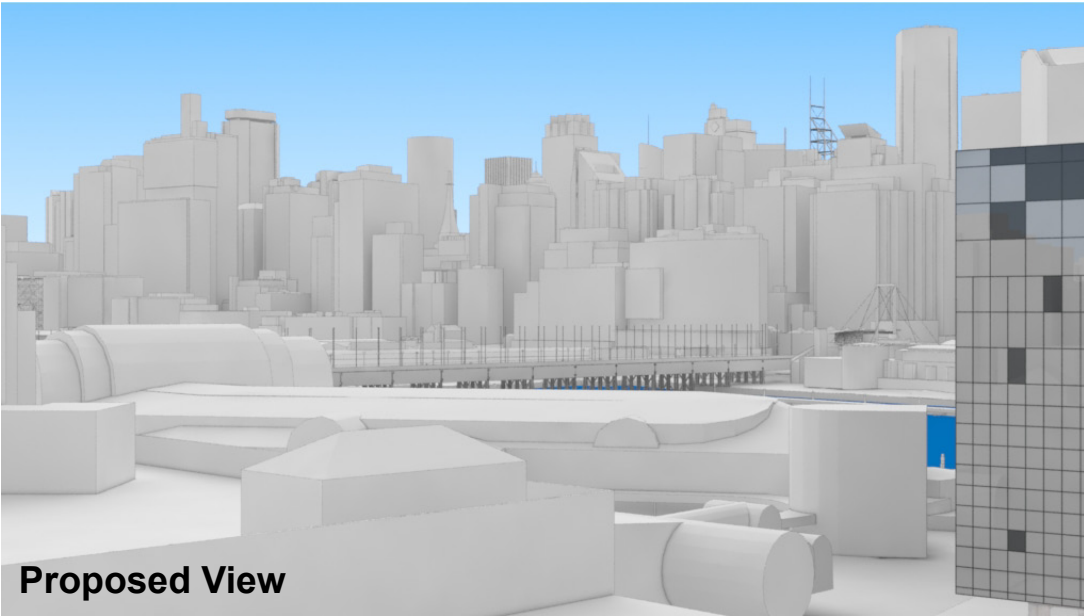
View Direction (50mm Camera)

Camera Position

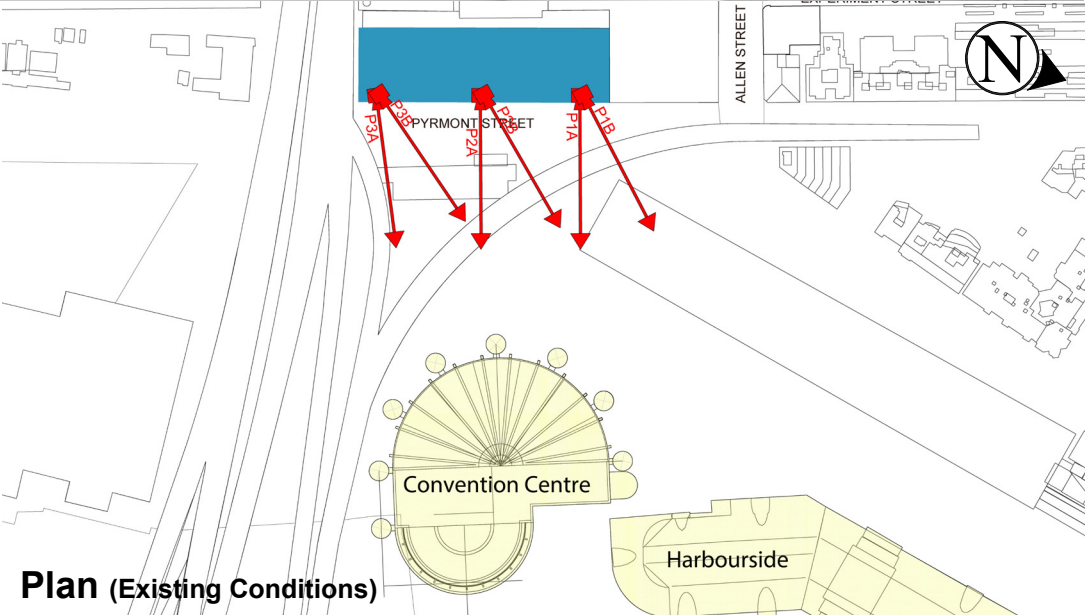
32



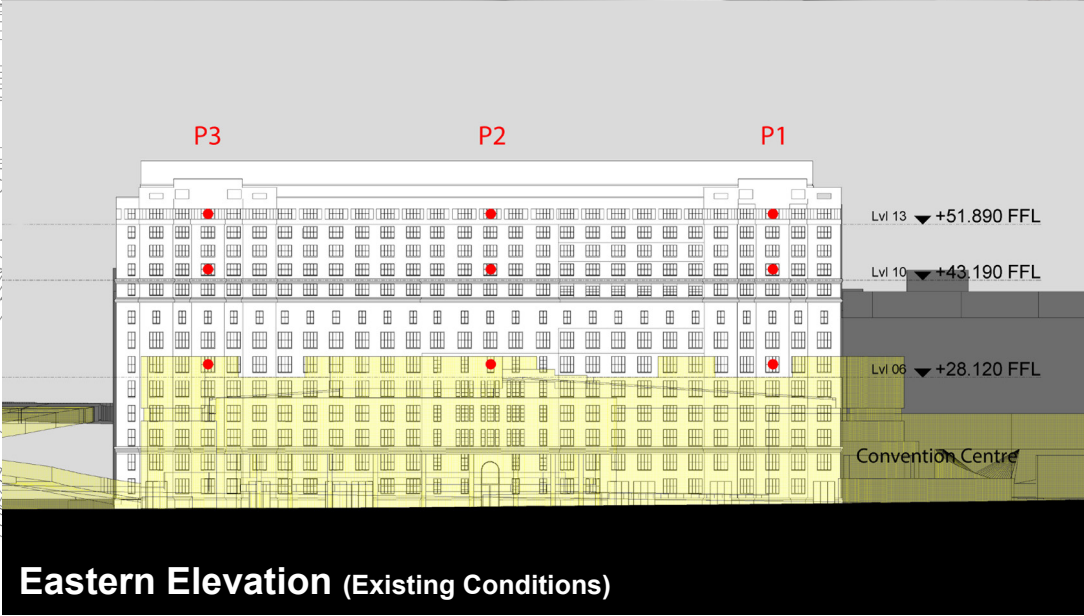
Existing View



Proposed View



Plan (Existing Conditions)



Eastern Elevation (Existing Conditions)

Oaks Goldsbrough Apartments

Position: P2A

Level: 13

RL: 53.49 (Camera Height)

FOR INFORMATION ONLY

Illustrative designs of built forms in the Haymarket precinct do not form part of this development application (and will be the subject of separate development assessment processes) and is shown for information and broader illustrative purposes.

These images are produced here for view analysis purposes only.

LEGEND:

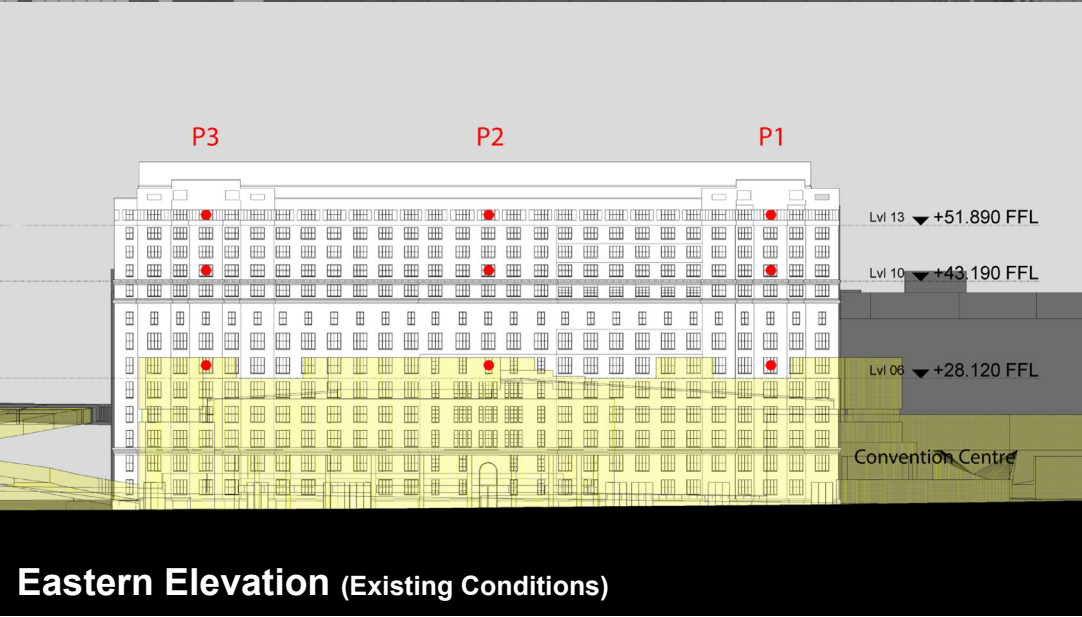
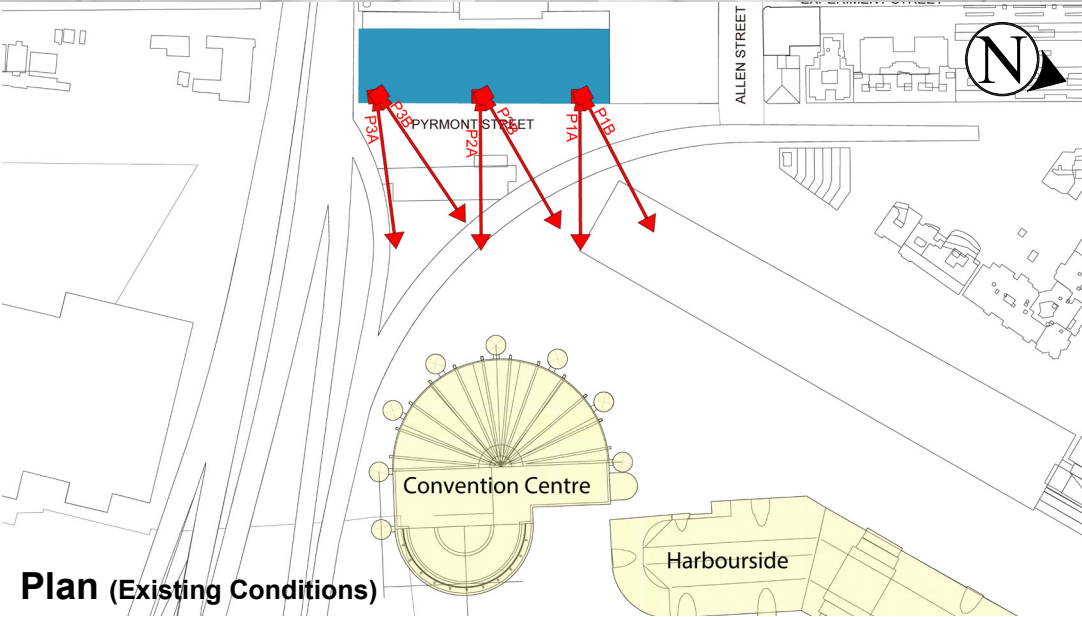
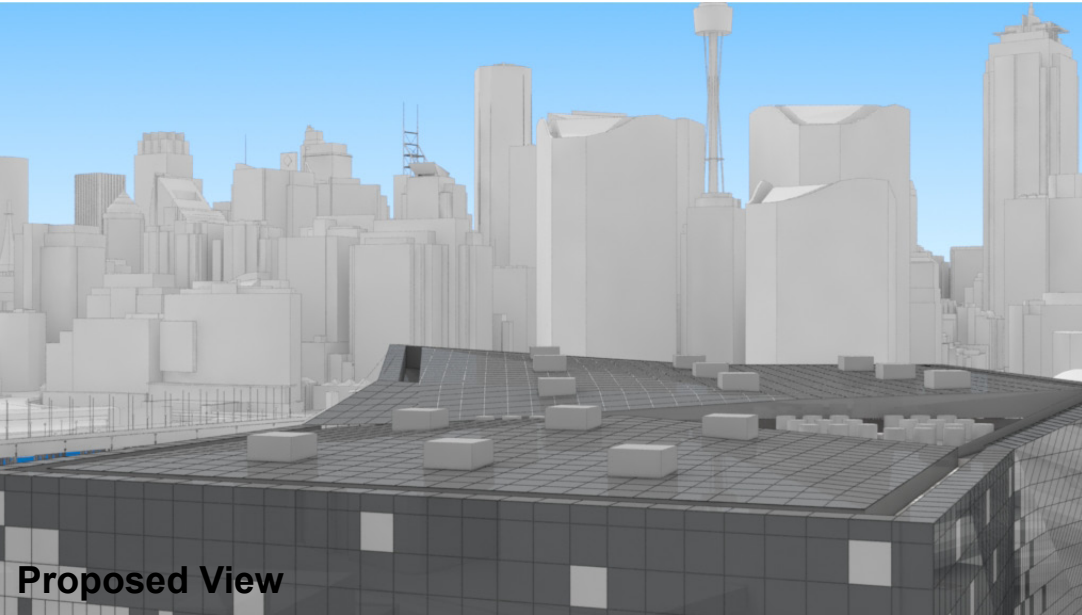
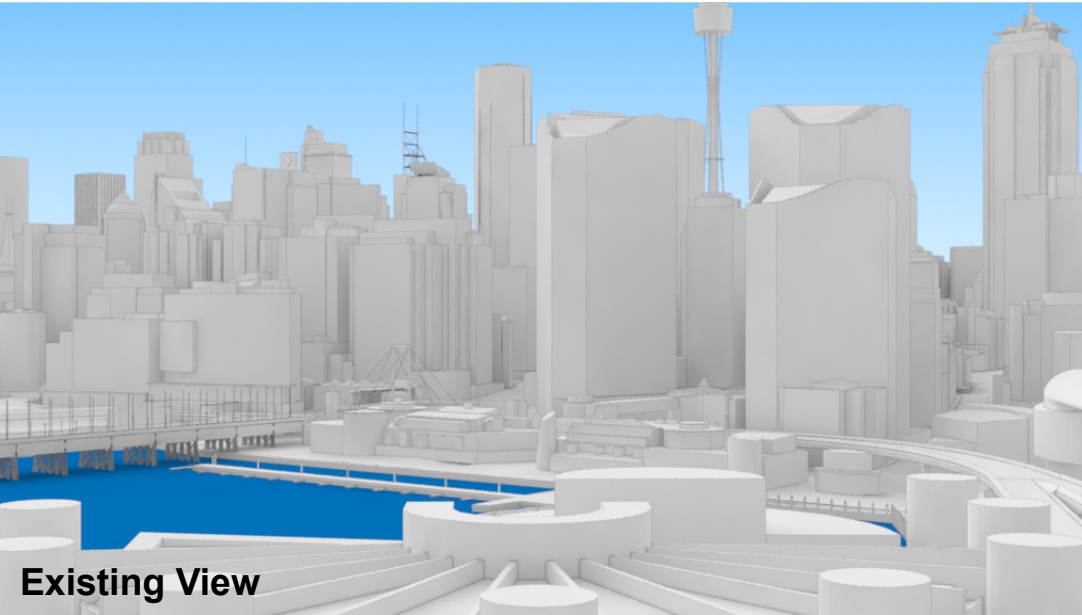
Key Building

Neighbouring Buildings

View Direction (50mm Camera)

Camera Position

33



Oaks Goldsbrough Apartments

Position: P2A

Level: 10

RL: 44.790 (Camera Height)

FOR INFORMATION ONLY

Illustrative designs of built forms in the Haymarket precinct do not form part of this development application (and will be the subject of separate development assessment processes) and is shown for information and broader illustrative purposes.

These images are produced here for view analysis purposes only.

LEGEND:

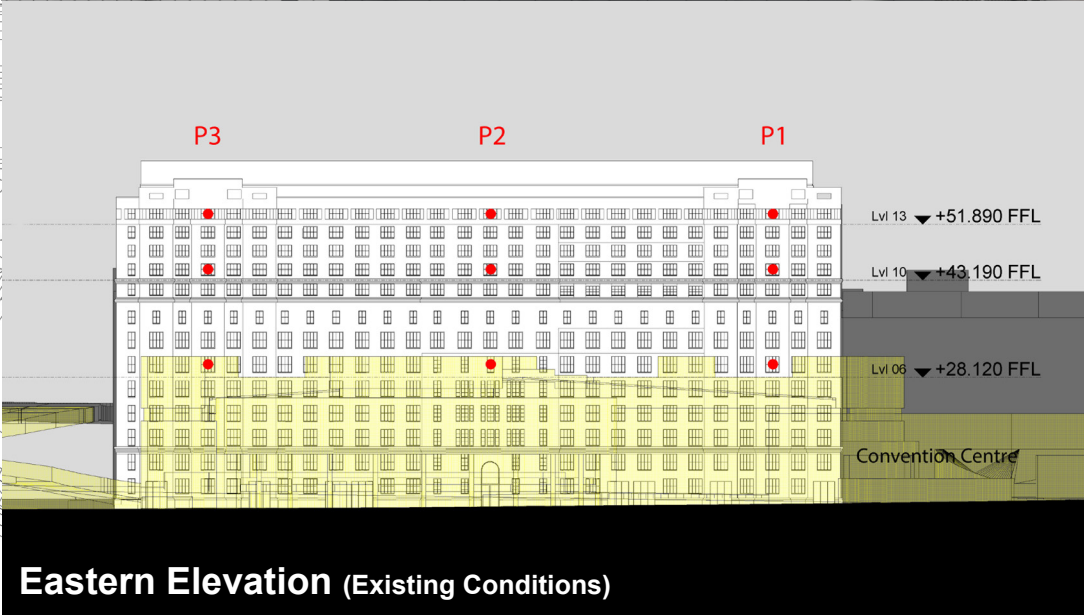
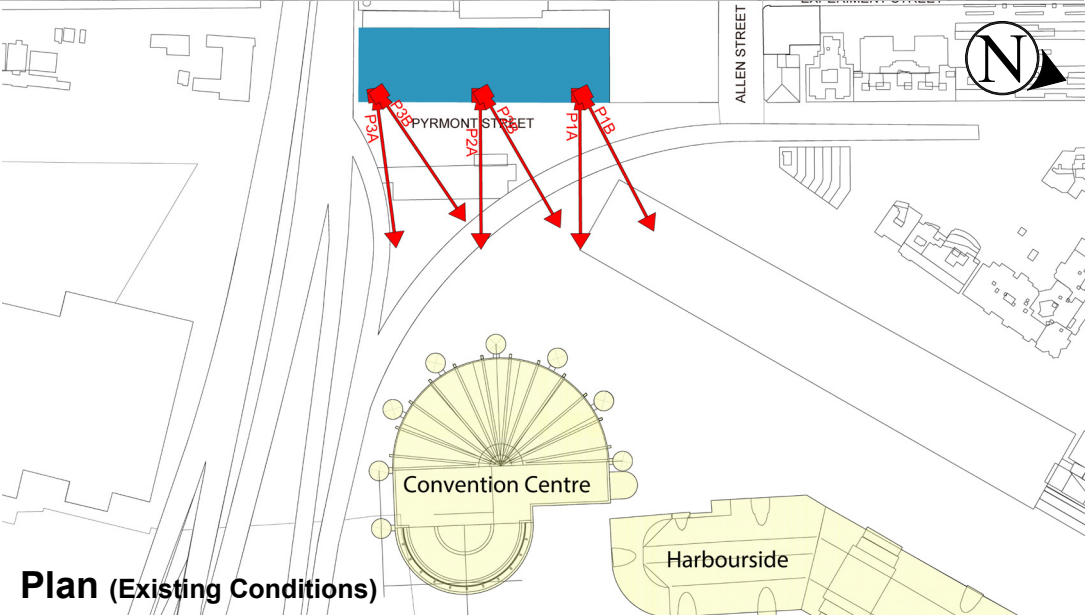
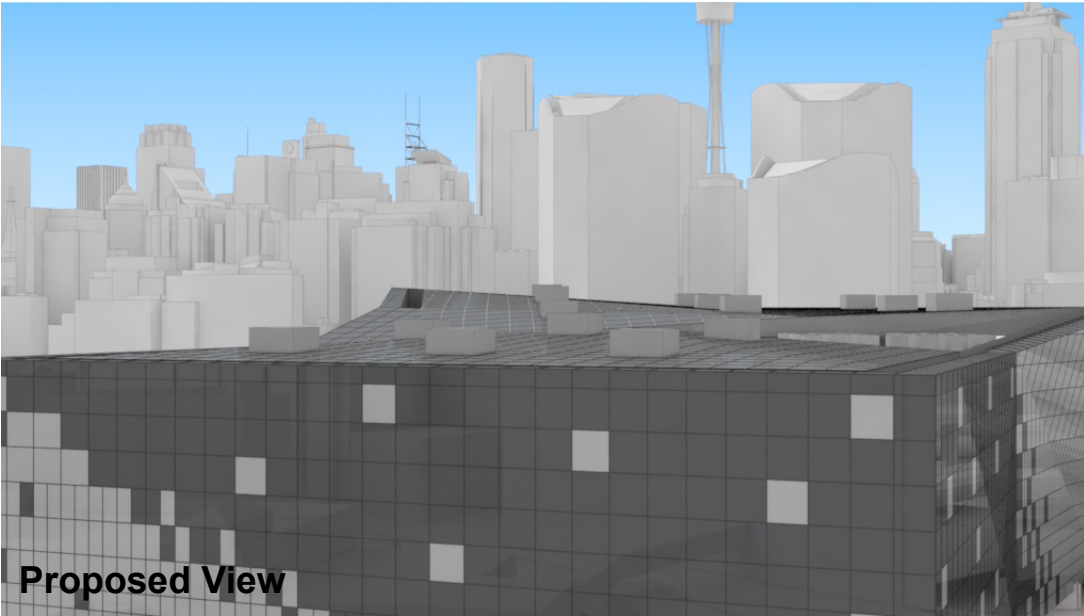
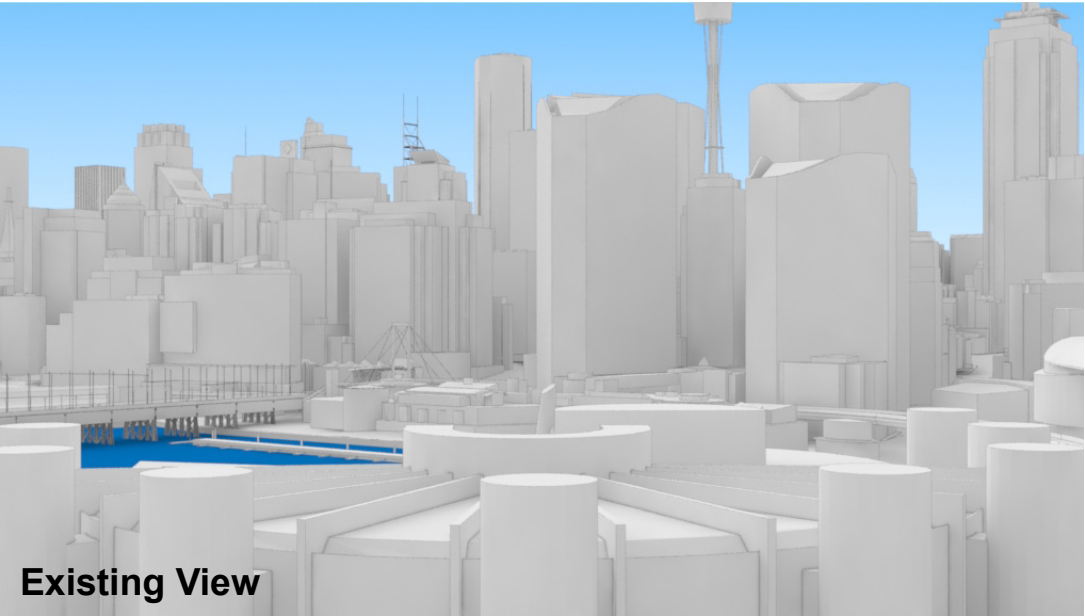
Key Building

Neighbouring Buildings

View Direction (50mm Camera)

Camera Position

34



Oaks Goldsbrough Apartments

Position: P2A

Level: 06

RL: 29.720 (Camera Height)

FOR INFORMATION ONLY

Illustrative designs of built forms in the Haymarket precinct do not form part of this development application (and will be the subject of separate development assessment processes) and is shown for information and broader illustrative purposes.

These images are produced here for view analysis purposes only.

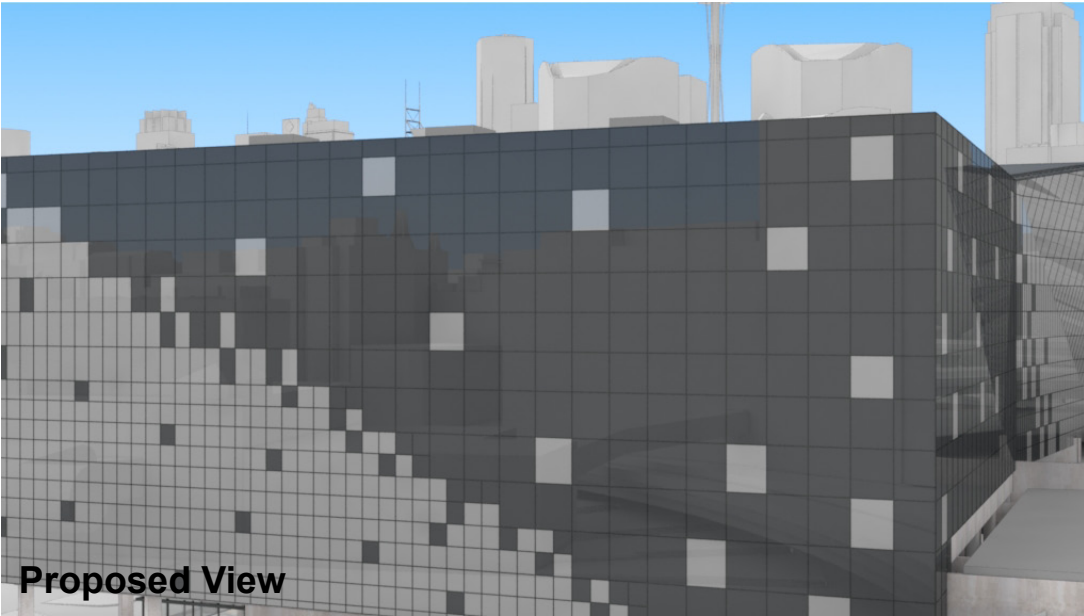
LEGEND: 35

- Key Building
- Neighbouring Buildings

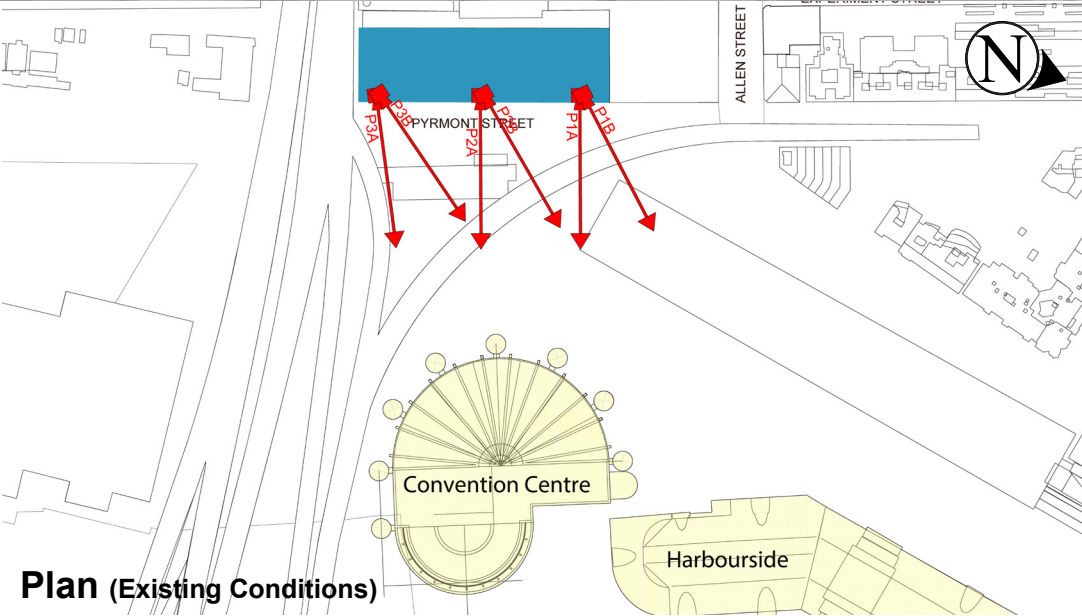
- View Direction (50mm Camera)
- Camera Position



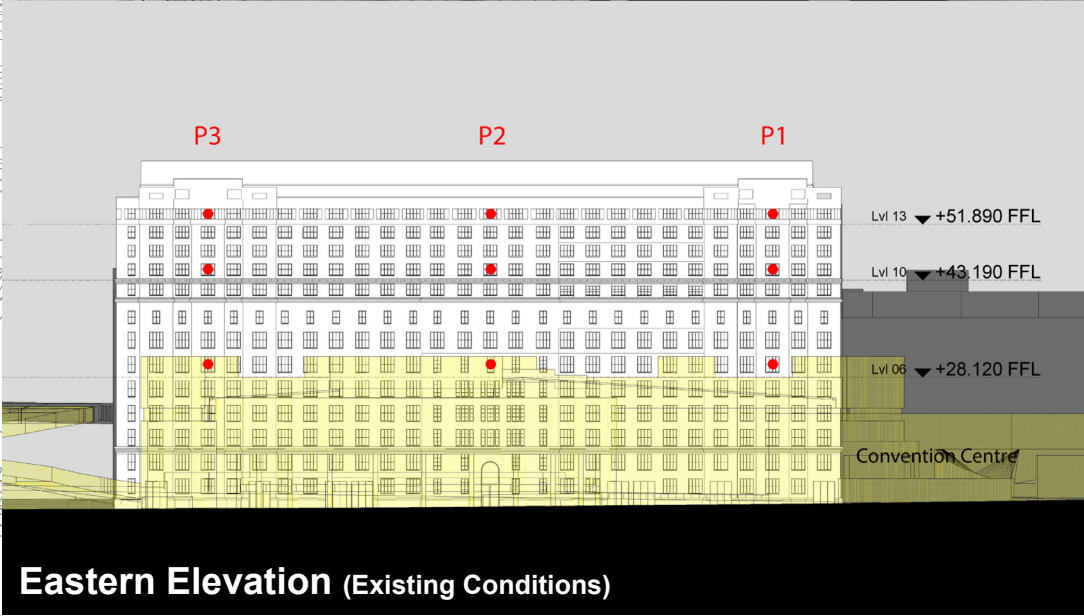
Existing View



Proposed View



Plan (Existing Conditions)



Eastern Elevation (Existing Conditions)

Oaks Goldsbrough Apartments

Position: P2B

Level: 13

RL: 53.49 (Camera Height)

FOR INFORMATION ONLY

Illustrative designs of built forms in the Haymarket precinct do not form part of this development application (and will be the subject of separate development assessment processes) and is shown for information and broader illustrative purposes.
These images are produced here for view analysis purposes only.

LEGEND:

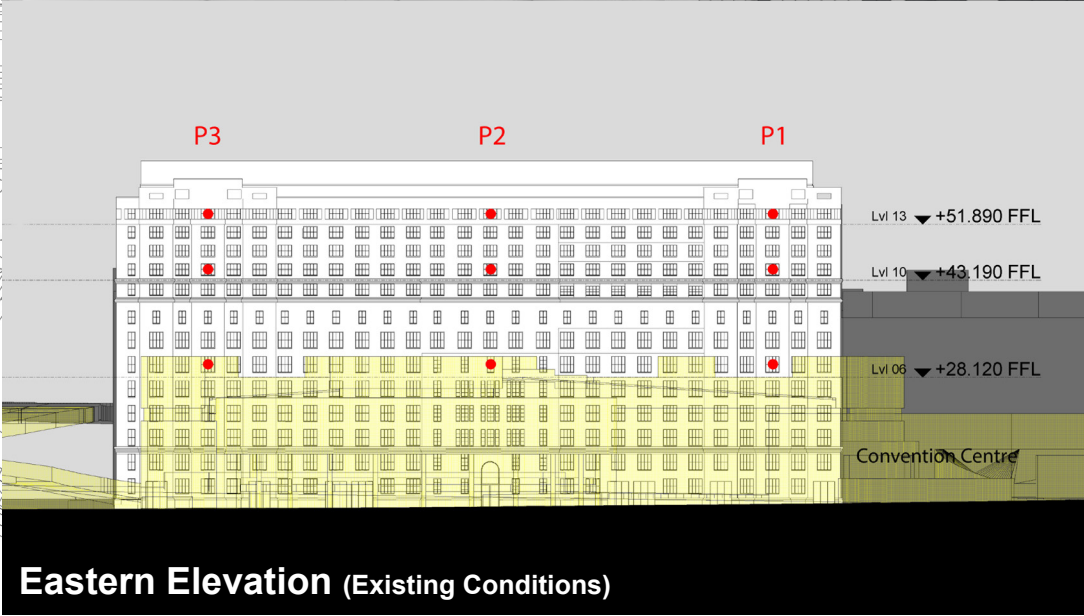
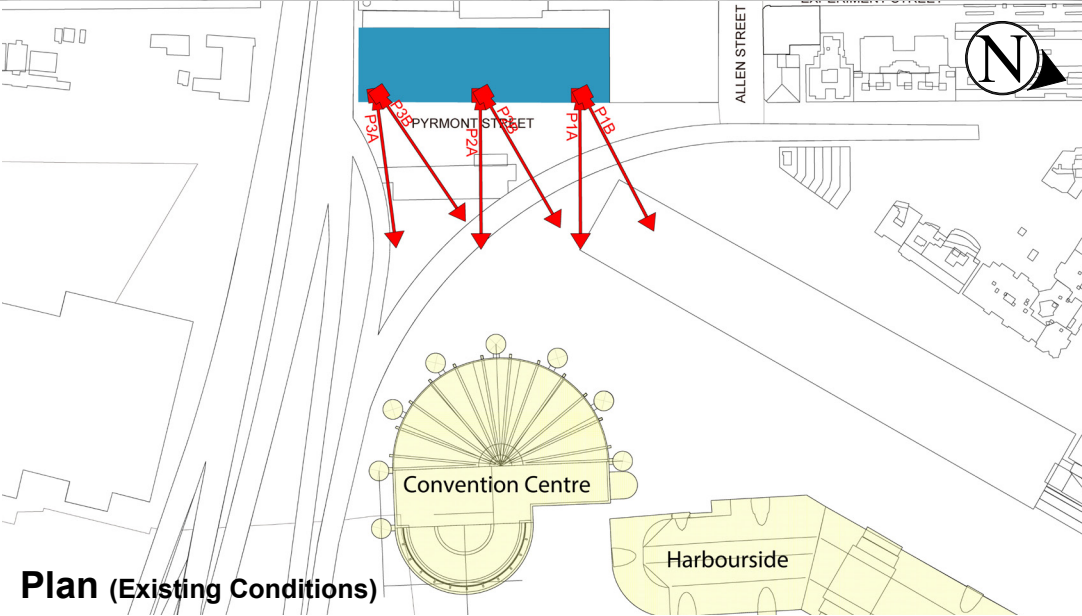
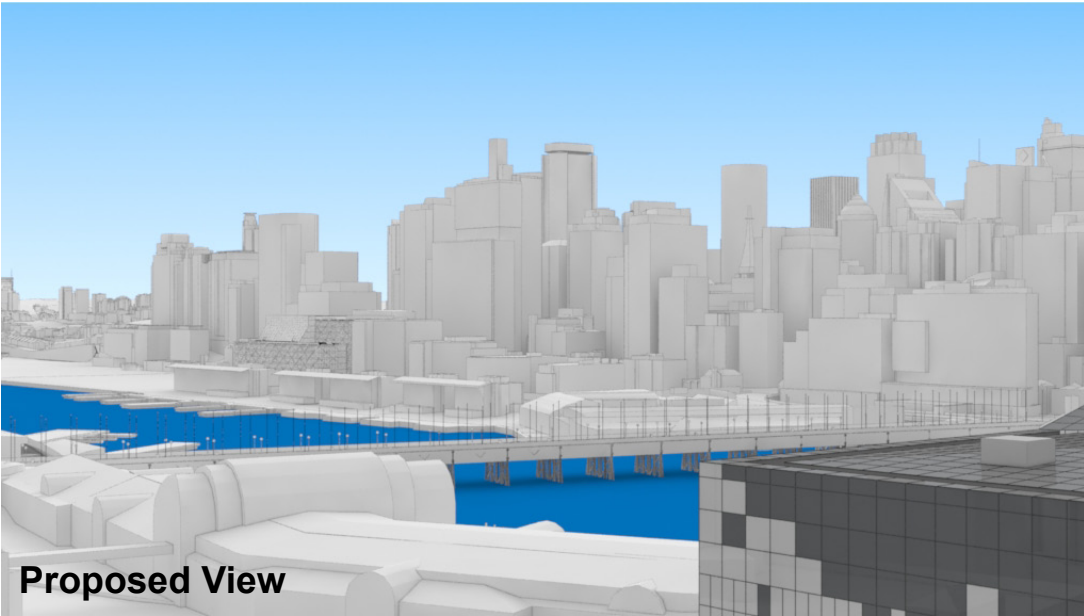
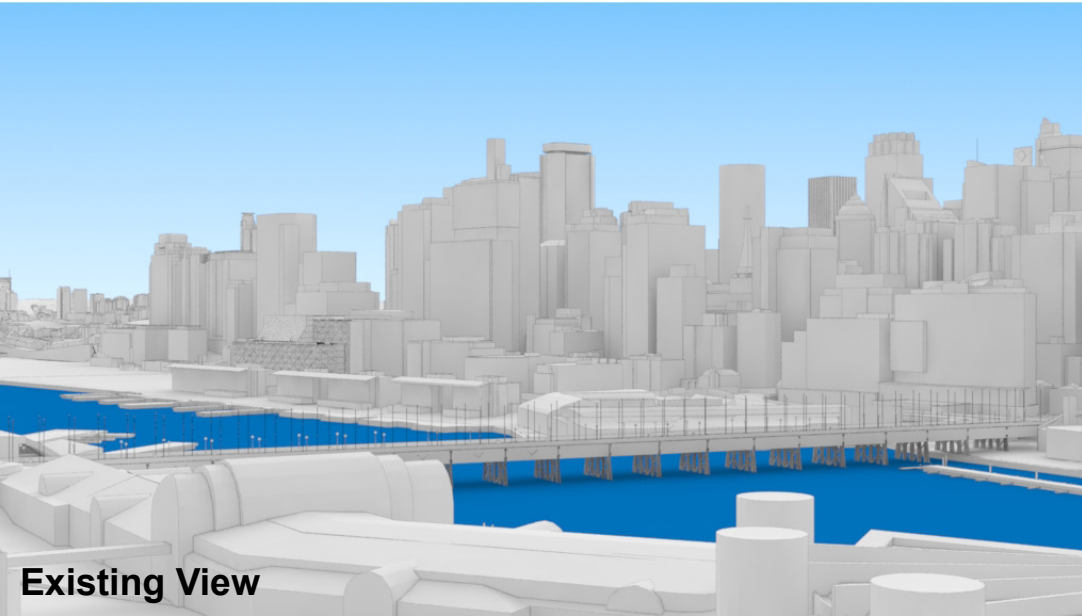
Key Building

Neighbouring Buildings

View Direction (50mm Camera)

Camera Position

36



Oaks Goldsbrough Apartments

Position: P2B

Level: 10

RL: 44.790 (Camera Height)

FOR INFORMATION ONLY

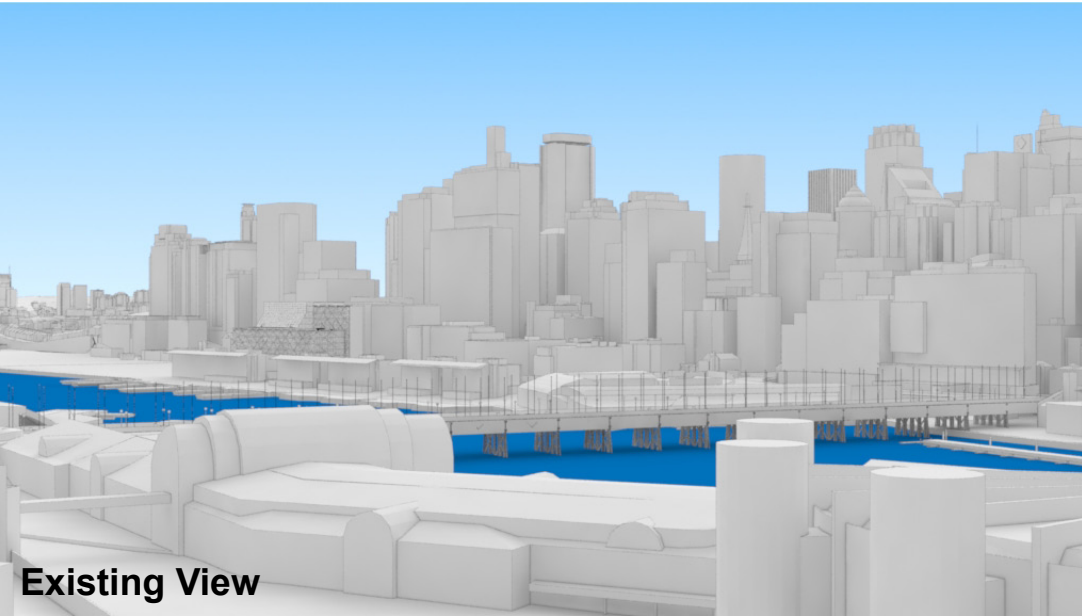
Illustrative designs of built forms in the Haymarket precinct do not form part of this development application (and will be the subject of separate development assessment processes) and is shown for information and broader illustrative purposes.

These images are produced here for view analysis purposes only.

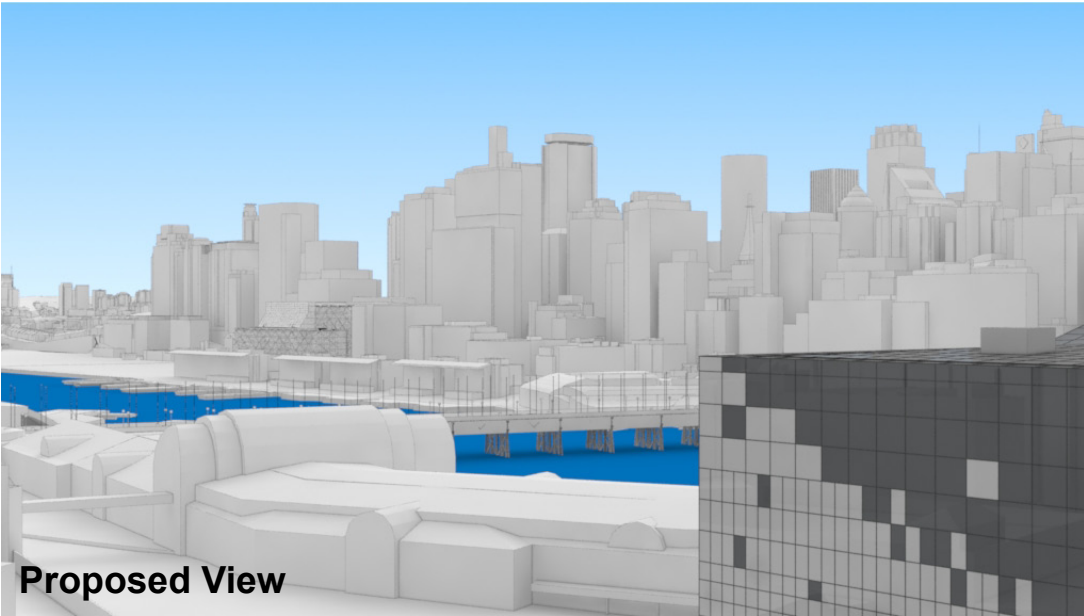
LEGEND: 37

- Key Building
- Neighbouring Buildings

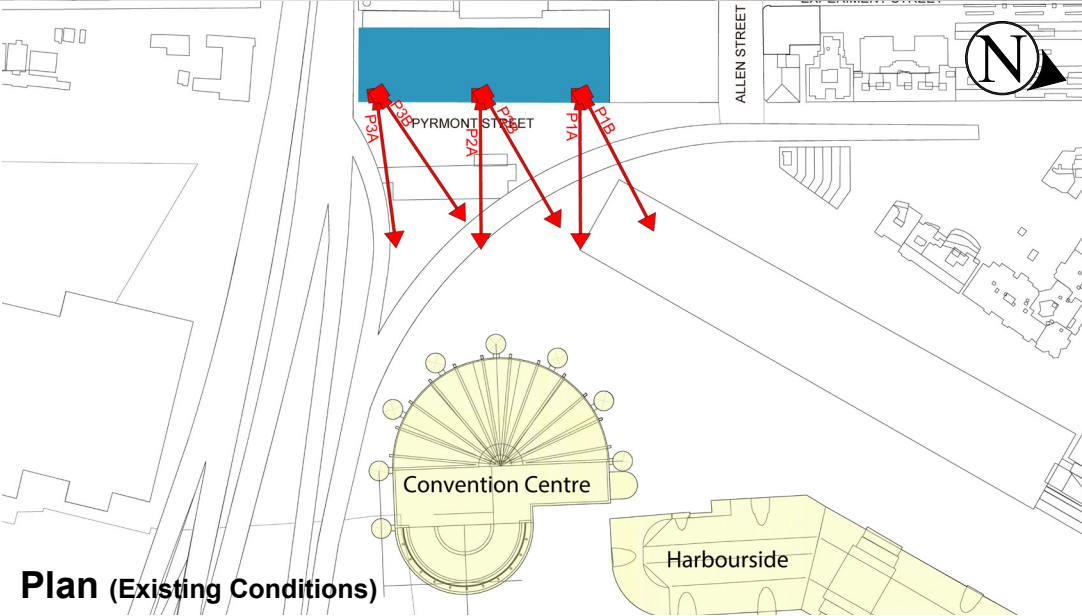
- View Direction (50mm Camera)
- Camera Position



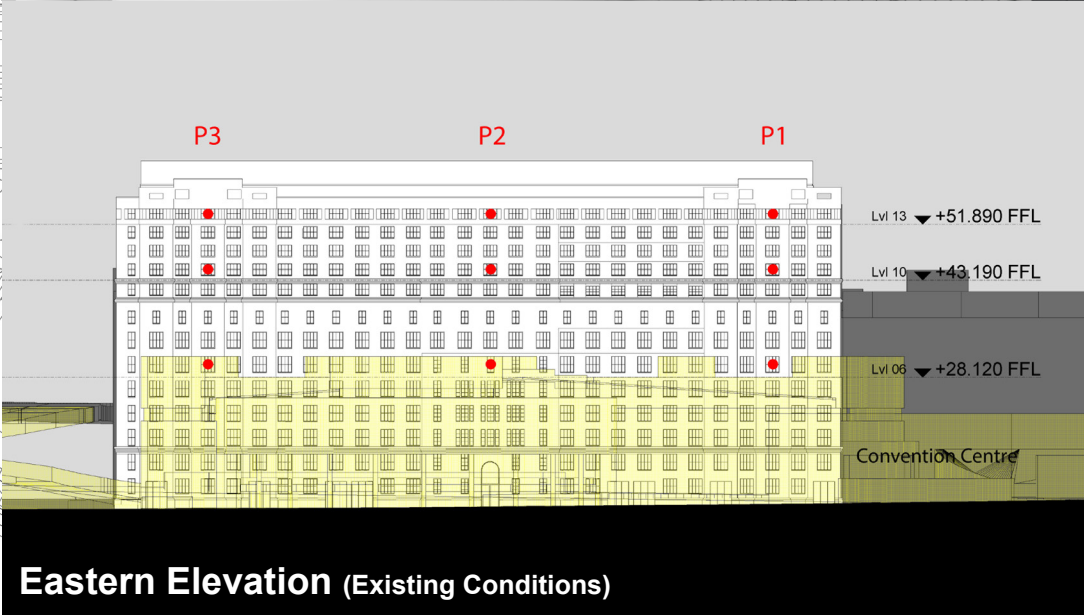
Existing View



Proposed View



Plan (Existing Conditions)



Eastern Elevation (Existing Conditions)

Oaks Goldsbrough Apartments

Position: P2B

Level: 06

RL: 29.720 (Camera Height)

FOR INFORMATION ONLY

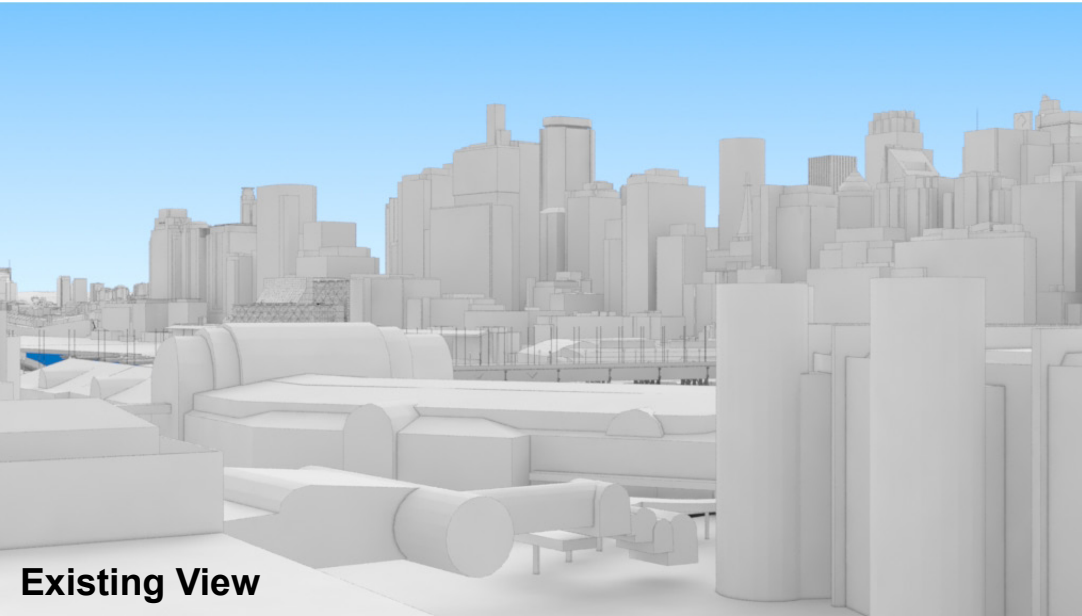
Illustrative designs of built forms in the Haymarket precinct do not form part of this development application (and will be the subject of separate development assessment processes) and is shown for information and broader illustrative purposes.

These images are produced here for view analysis purposes only.

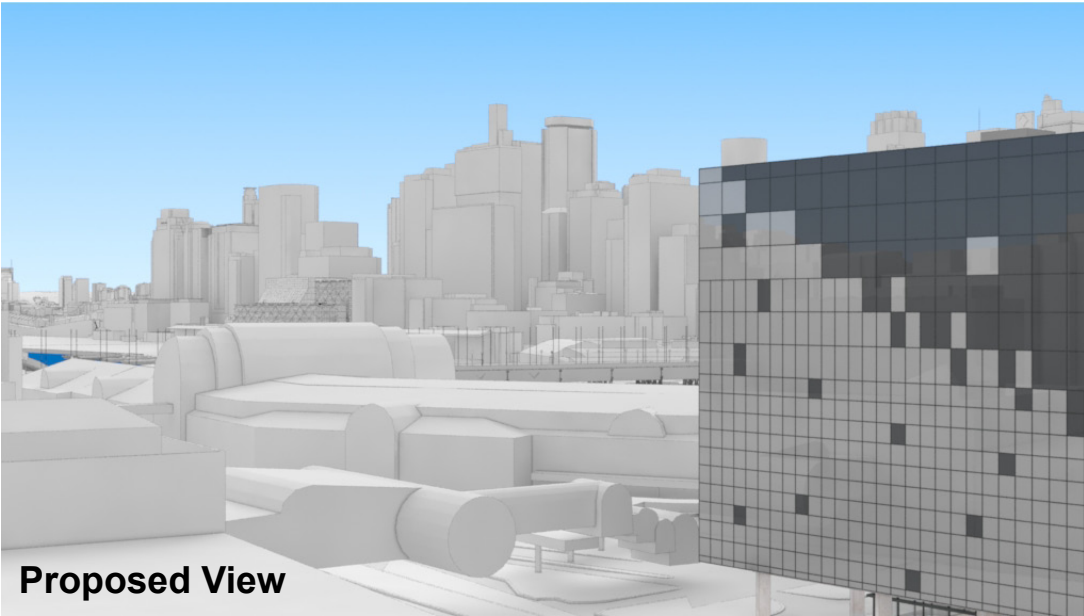
LEGEND: 38

- Key Building
- Neighbouring Buildings

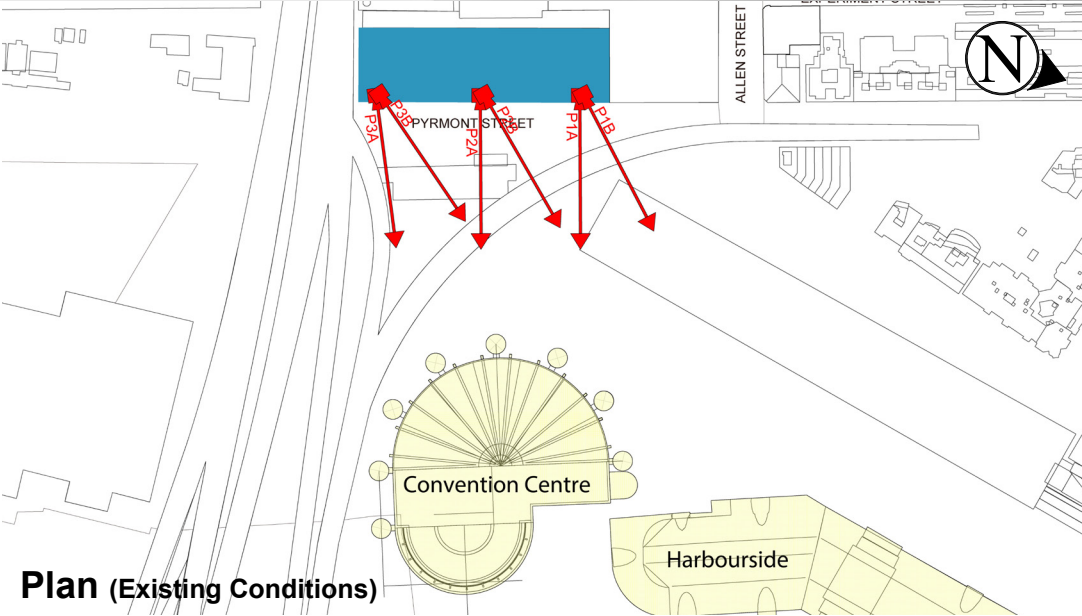
- View Direction (50mm Camera)
- Camera Position



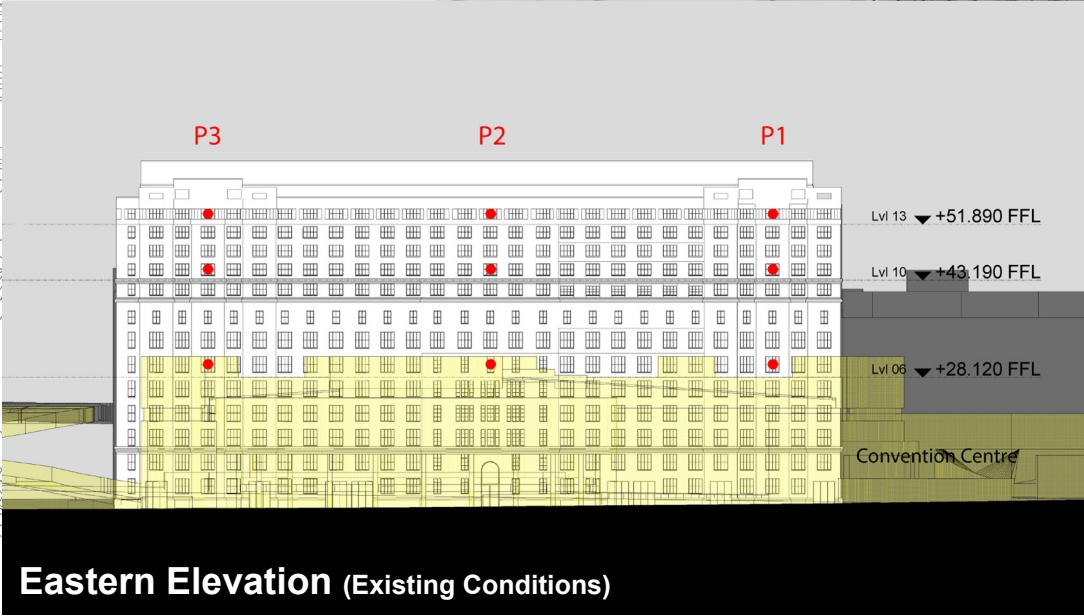
Existing View



Proposed View



Plan (Existing Conditions)



Eastern Elevation (Existing Conditions)

Oaks Goldsbrough Apartments

Position: P3A

Level: 13

RL: 53.49 (Camera Height)

FOR INFORMATION ONLY

Illustrative designs of built forms in the Haymarket precinct do not form part of this development application (and will be the subject of separate development assessment processes) and is shown for information and broader illustrative purposes.
These images are produced here for view analysis purposes only.

LEGEND:

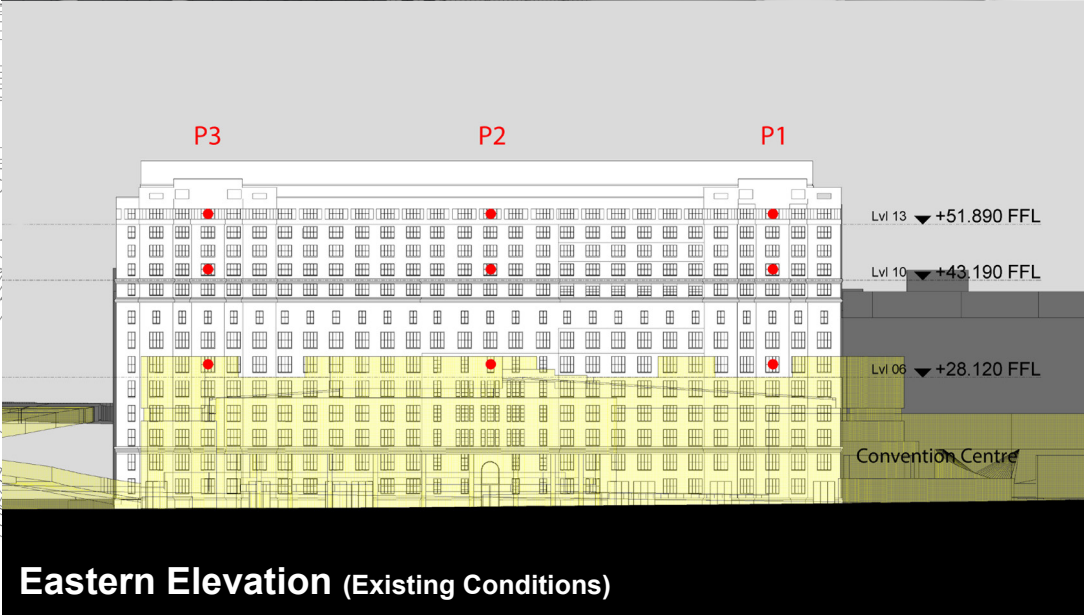
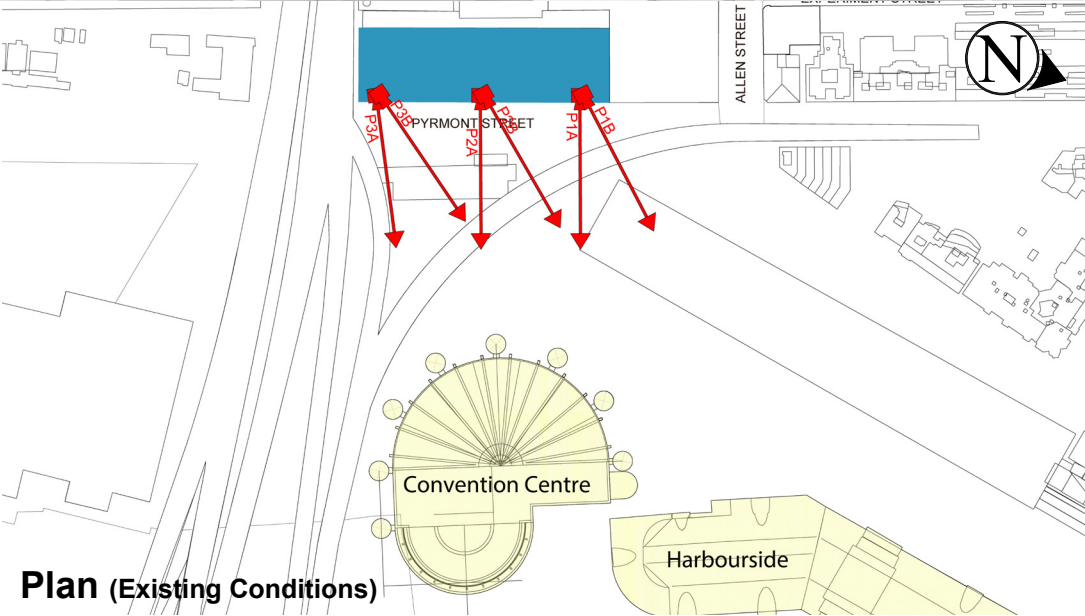
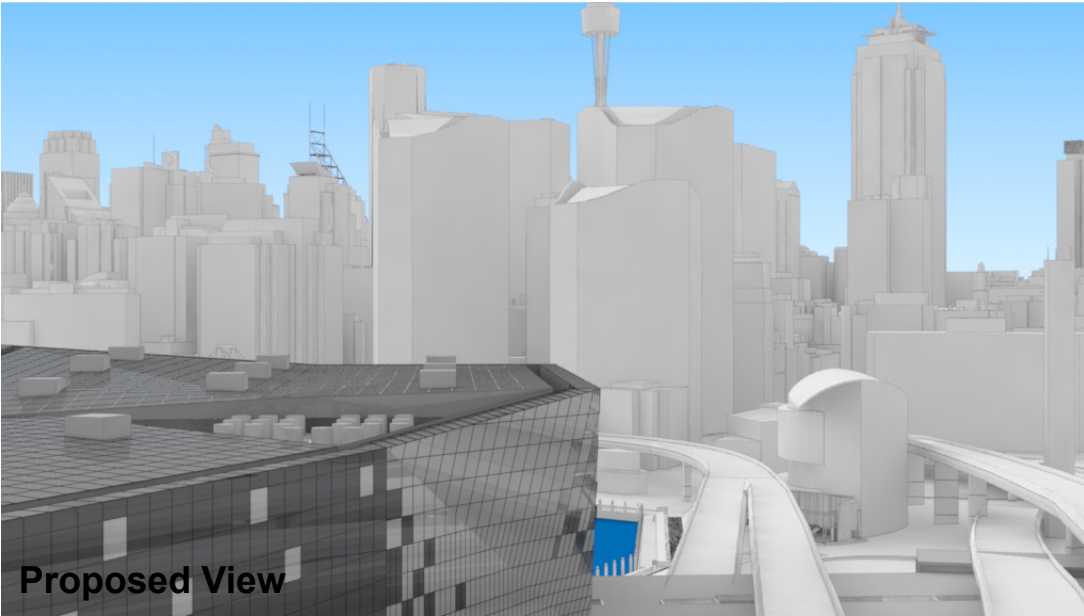
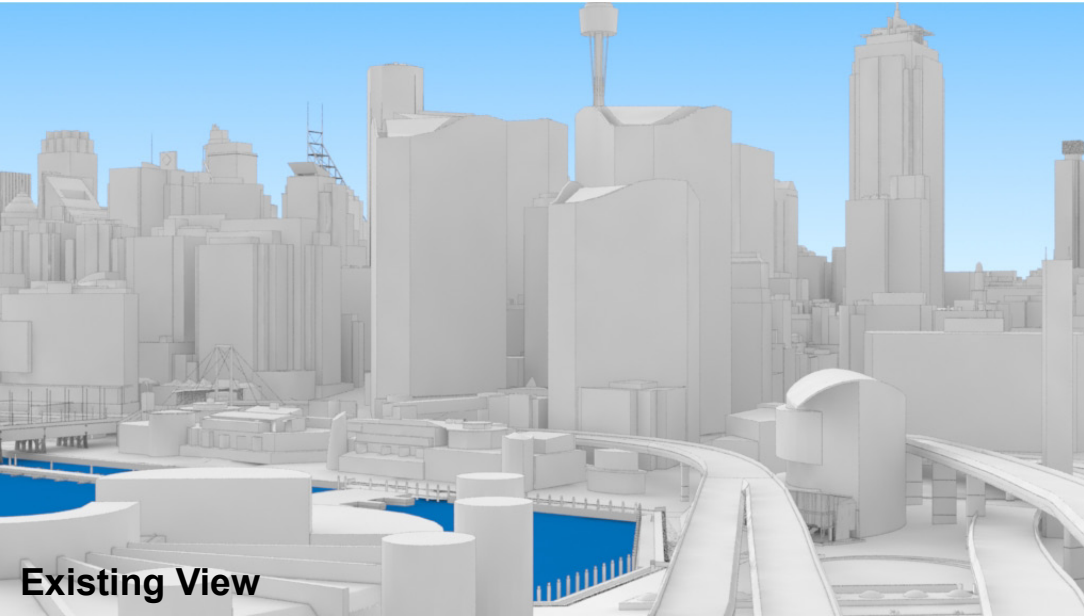
Key Building

Neighbouring Buildings

View Direction (50mm Camera)

Camera Position

39



Oaks Goldsbrough Apartments

Position: P3A

Level: 10

RL: 44.790 (Camera Height)

FOR INFORMATION ONLY

Illustrative designs of built forms in the Haymarket precinct do not form part of this development application (and will be the subject of separate development assessment processes) and is shown for information and broader illustrative purposes.

These images are produced here for view analysis purposes only.

LEGEND:

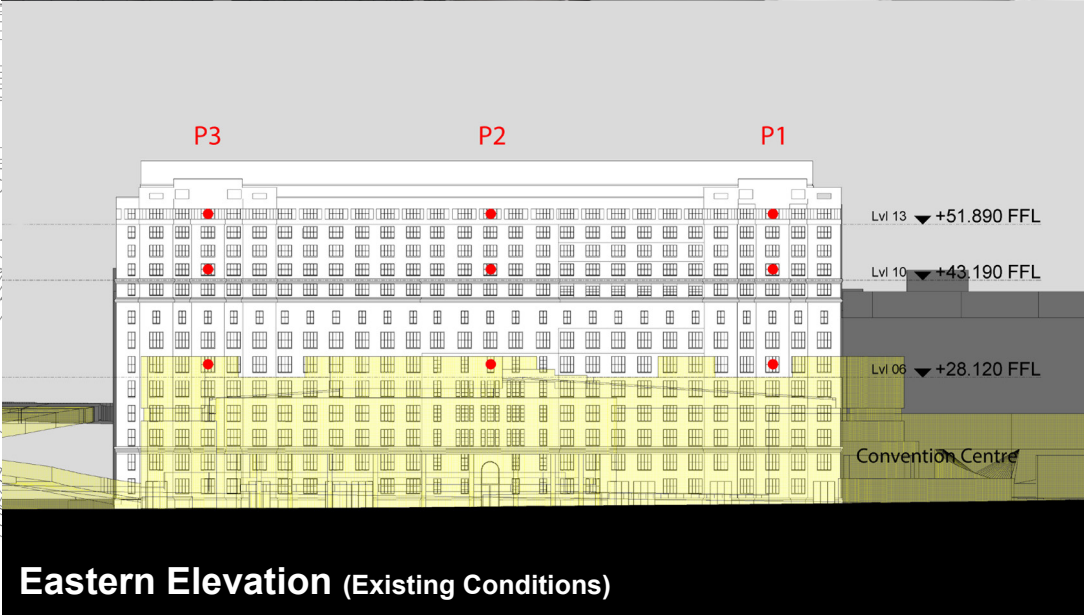
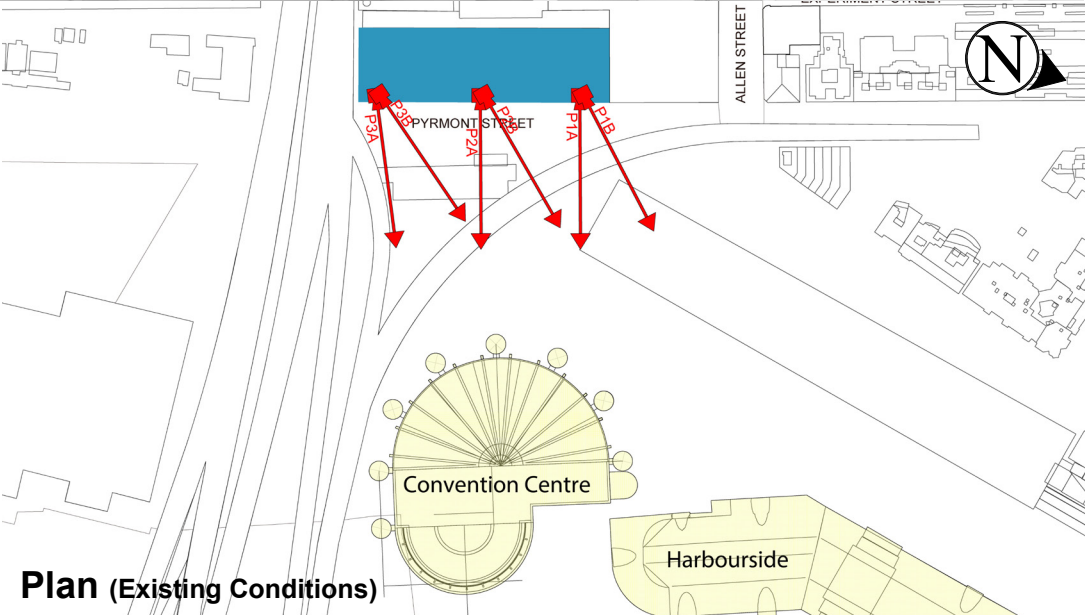
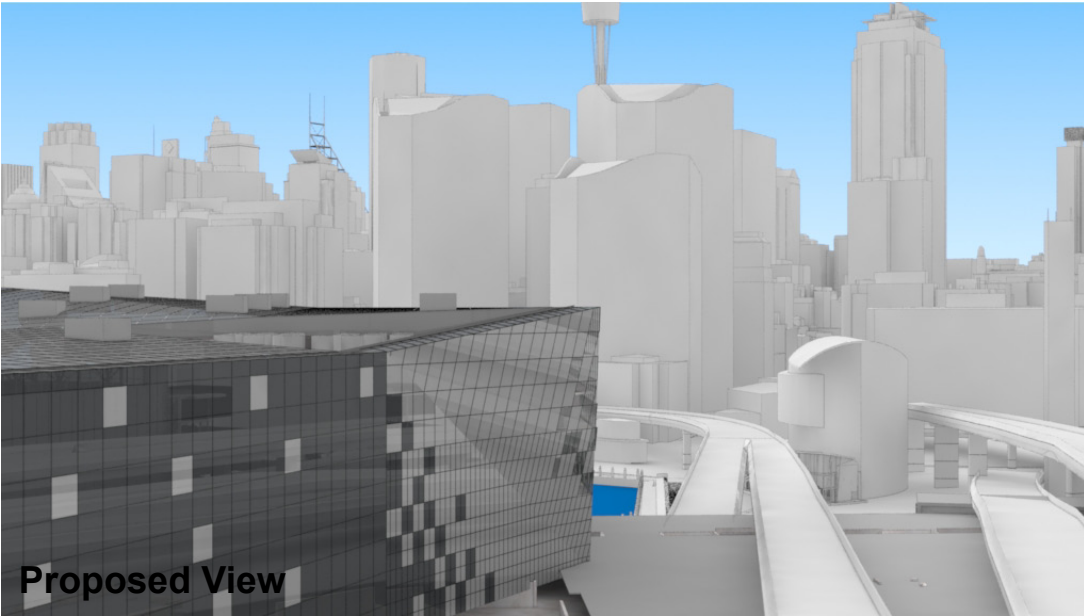
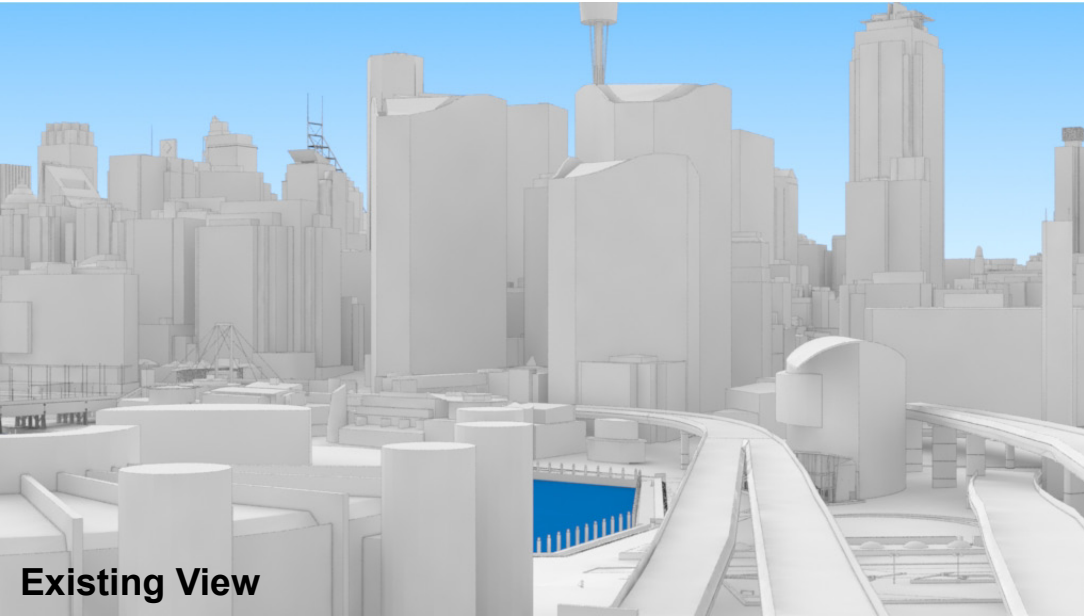
Key Building

Neighbouring Buildings

View Direction (50mm Camera)

Camera Position

40



Oaks Goldsbrough Apartments

Position: P3A

Level: 06

RL: 29.720 (Camera Height)

FOR INFORMATION ONLY

Illustrative designs of built forms in the Haymarket precinct do not form part of this development application (and will be the subject of separate development assessment processes) and is shown for information and broader illustrative purposes.

These images are produced here for view analysis purposes only.

LEGEND:

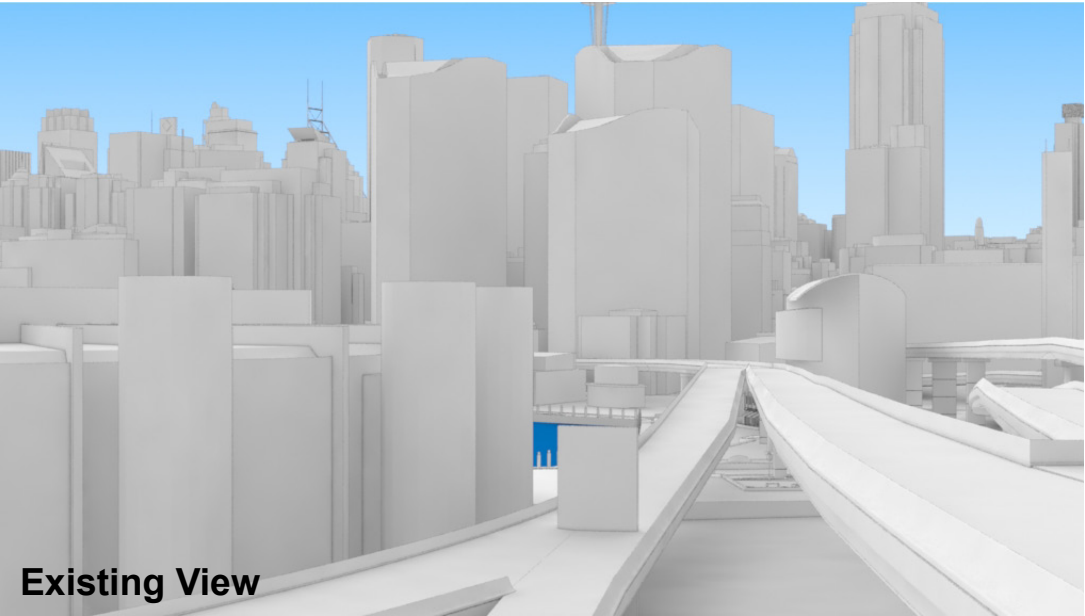
Key Building

Neighbouring Buildings

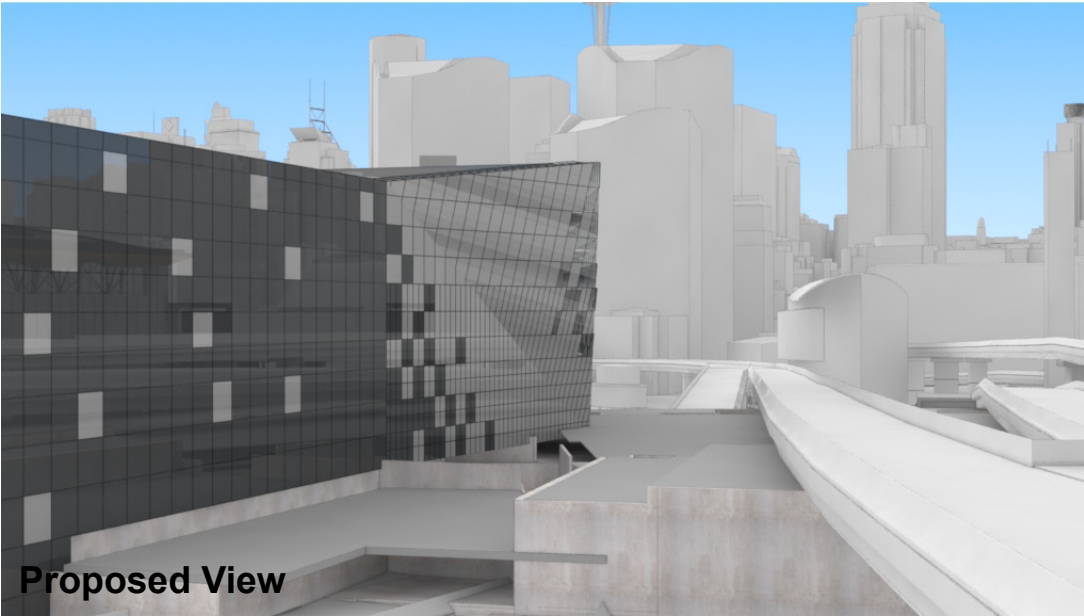
View Direction (50mm Camera)

Camera Position

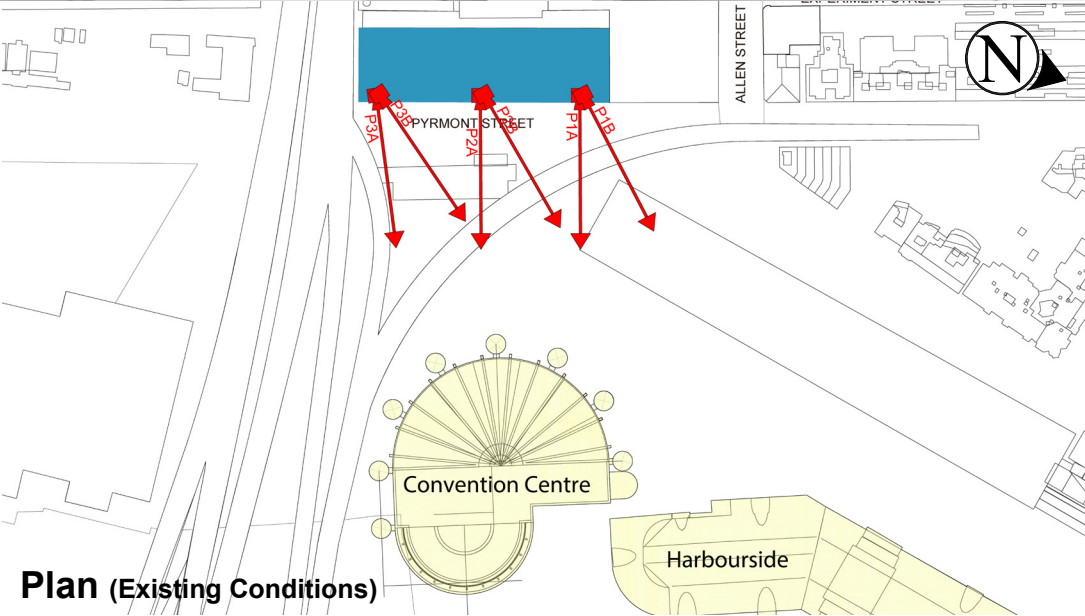
41



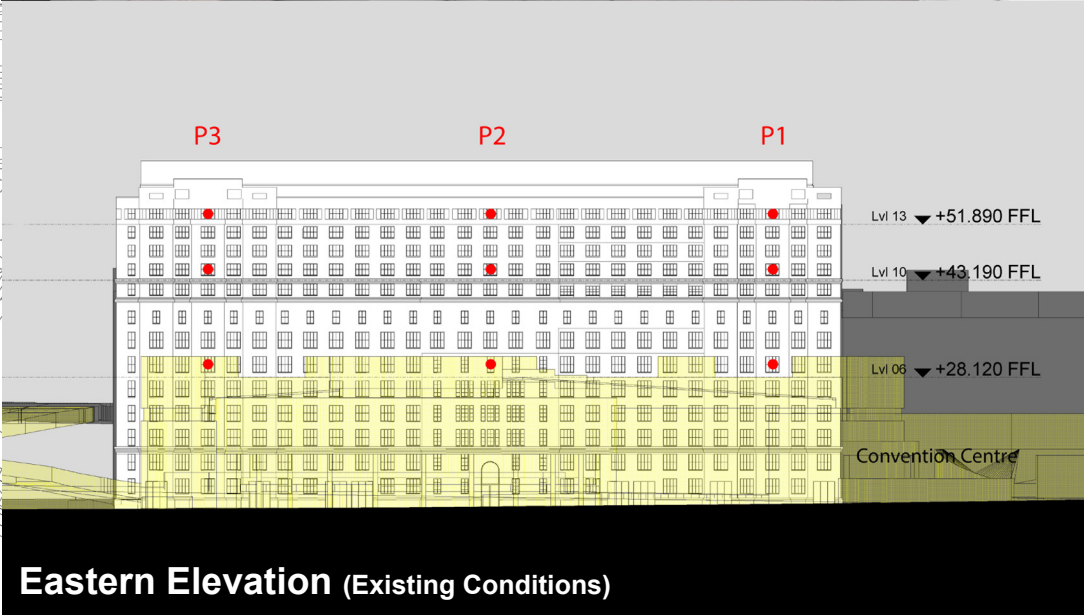
Existing View



Proposed View



Plan (Existing Conditions)



Eastern Elevation (Existing Conditions)

Oaks Goldsbrough Apartments

Position: P3B

Level: 13

RL: 53.49 (Camera Height)

FOR INFORMATION ONLY

Illustrative designs of built forms in the Haymarket precinct do not form part of this development application (and will be the subject of separate development assessment processes) and is shown for information and broader illustrative purposes.
These images are produced here for view analysis purposes only.

LEGEND:

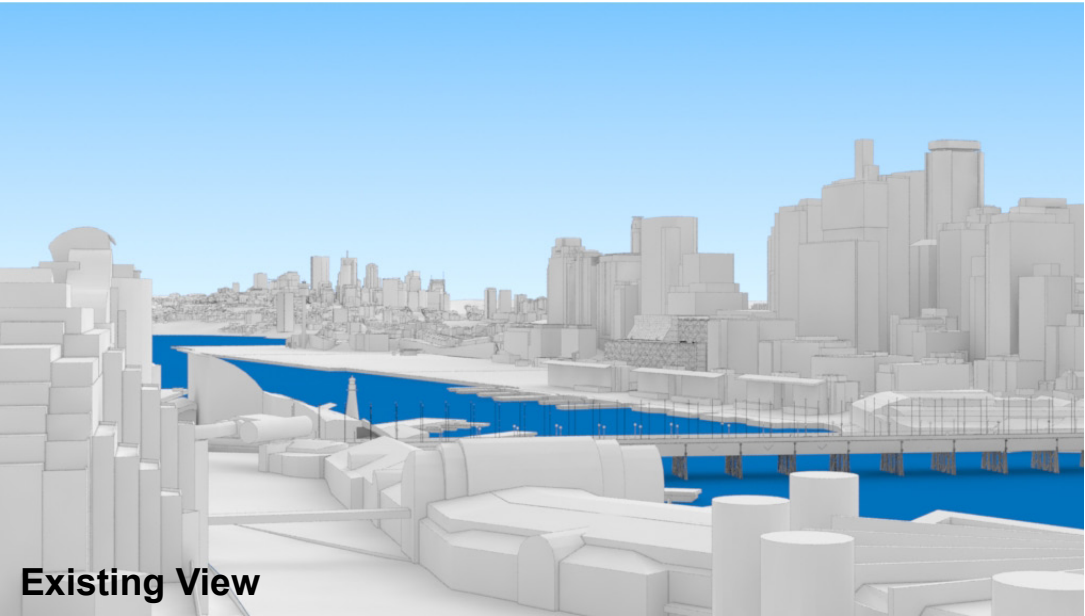
Key Building

Neighbouring Buildings

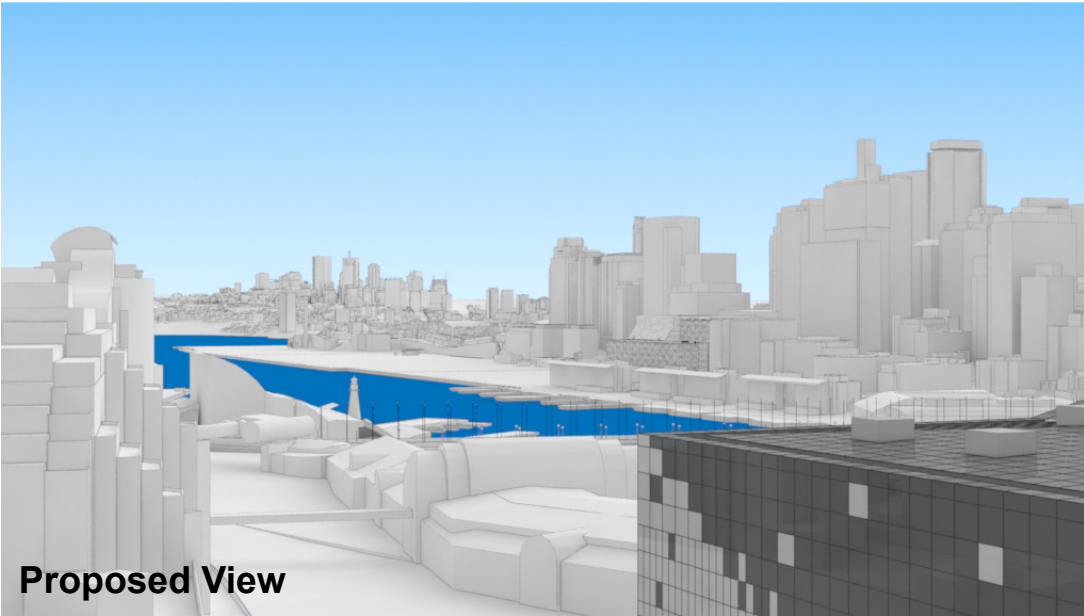
View Direction (50mm Camera)

Camera Position

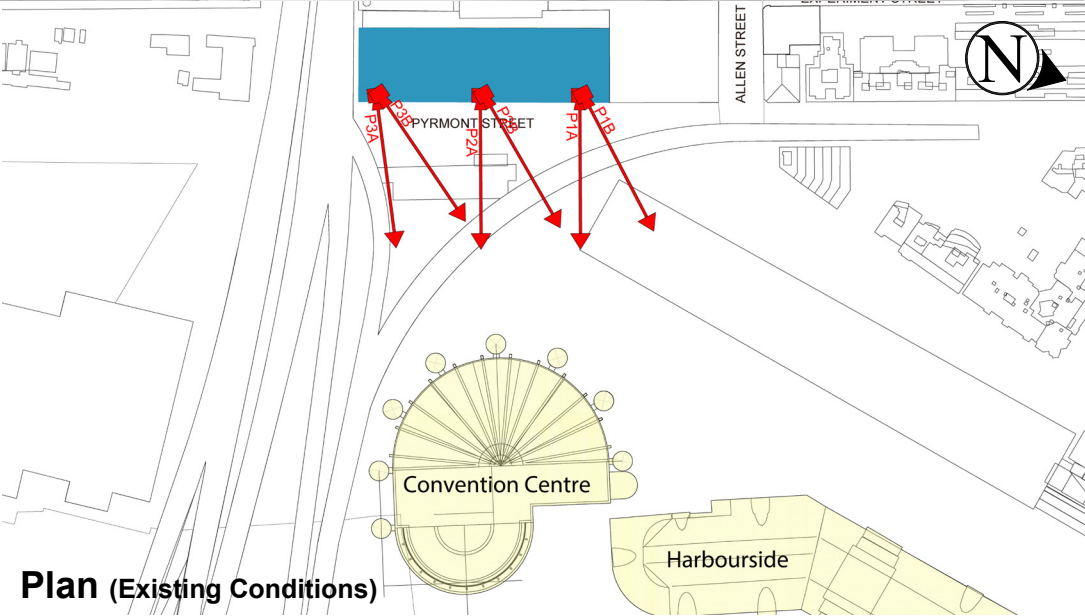
42



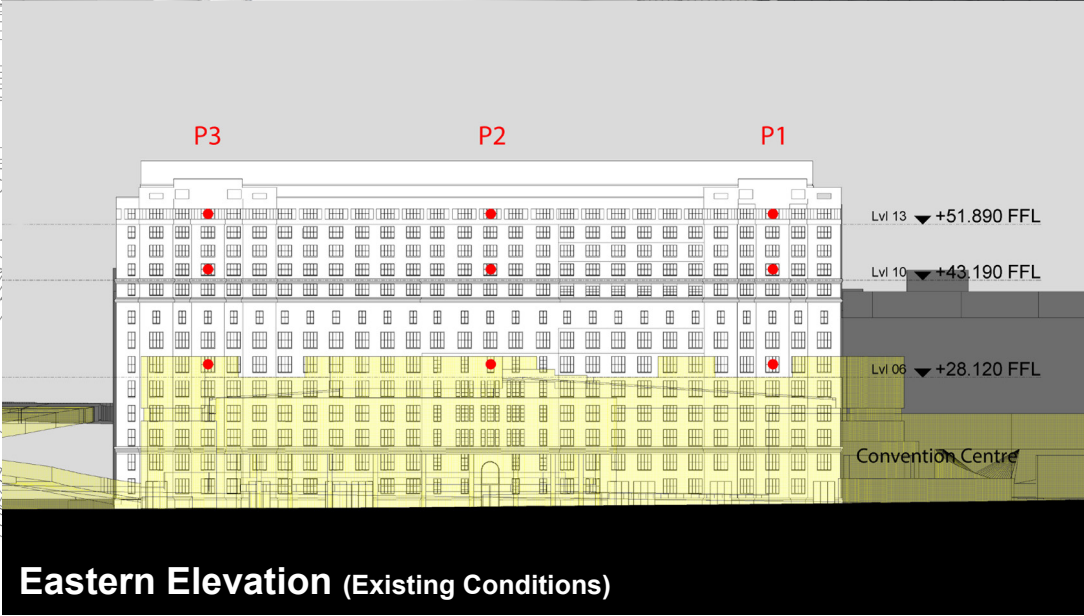
Existing View



Proposed View



Plan (Existing Conditions)



Eastern Elevation (Existing Conditions)

Oaks Goldsbrough Apartments

Position: P3B

Level: 10

RL: 44.790 (Camera Height)

FOR INFORMATION ONLY

Illustrative designs of built forms in the Haymarket precinct do not form part of this development application (and will be the subject of separate development assessment processes) and is shown for information and broader illustrative purposes.
These images are produced here for view analysis purposes only.

LEGEND:

Key Building

Neighbouring Buildings

View Direction (50mm Camera)

Camera Position

43

