

## 10.0 PUBLIC ART STRATEGY

### Goals

Darling Harbour Live recognise the importance of art in the public context. It has the potential to engage and inspire offering interpretation of culture and location. At its best it can sing resonant with its place. The strategy for integration of art is most important to enable delivery of such works. The selection of artists and an engagement in the process they follow is the critical and detailed job of the art consultant. Creating deep and considered connections with the design professionals envisioning the architecture and public domain results in truly integrated works. Our goal is to foster and support artists and artworks that are unique, considered and significant.

As chairman of the City of Sydney Art Advisory Panel (2007-present) and founding director of the Museum of Contemporary Art, Leon Paroissien has a passion for contemporary art which is matched with experience in the stringent requirements of works in the public realm. Leon, our art consultant, will work closely with our design team and drive all aspects of the integration of art on the site creating the detailed art strategy.

In addition to the water features that create focal points along the site we have committed \$2 million for the public art within the public realm serving the Core Facilities and propose the following in the north and centre sectors of the precinct.

- 1-2 major commissions for works of international standards;
- Several integrated interpretive works relating to site and culture;
- Opportunities for temporary artworks;
- Relocation of existing sculptures to approved locations; and
- Relocation of existing paintings within the new buildings.

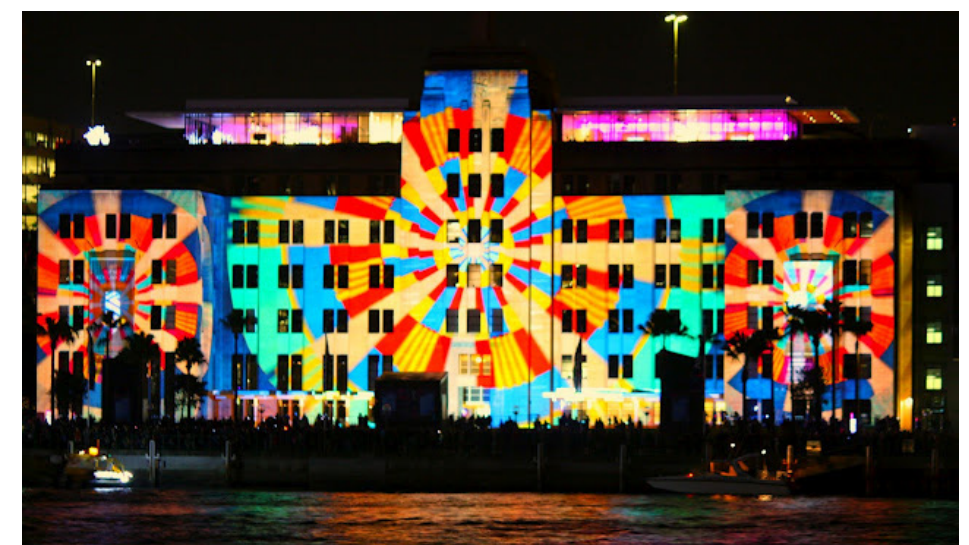
**Tumbalong Place**  
A significant light work that encapsulates energy and entertainment forms a centre piece of the site. The work may involve programmed LEDs or projection but should present an engaging work that compels the visitor to get closer and stay for and dwell for a time.



Leo Villareal\_Multiverse



Bruce Munro\_Field of Light



Vivid Sydney - MCA



## Strategy

### Artist Selection

- Artists will be chosen based on past works, interests and relevance for each specific site;
- They will be invited to respond to each site in a way that resonates with its history, culture or ecology;
- The short listing process will be detailed and considered and may be approached through competitions; limited or otherwise, portfolio review and interview; and
- The process will involve both experienced and emerging artists and include at least one Indigenous artists

The Art Strategy diagram (on the following page) outlines locations and themes which we feel respond to the whole site and its program. The exact nature and location of the works will develop with consultation with various stakeholders including the State, SHFA and the City of Sydney.

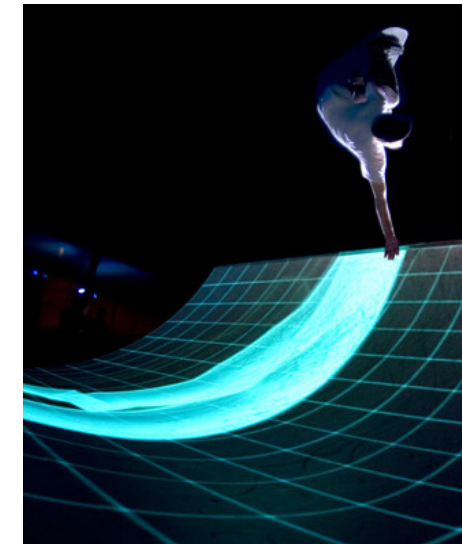
Artists will be expected to demonstrate an understanding of the potential role art may have in complex projects, the design ability and resources to undertake large, innovative urban scale projects; the ability to work effectively in multi-disciplinary teams in a cooperative process, a demonstrated ability to work within given budgets and schedules, and an understanding of the goals with respect to environmental and general planning objectives.

Artists selected will be expected to have a high level of conceptual innovation, technical skills, and a rich design sensibility and work in a collaborative manner with the design team.

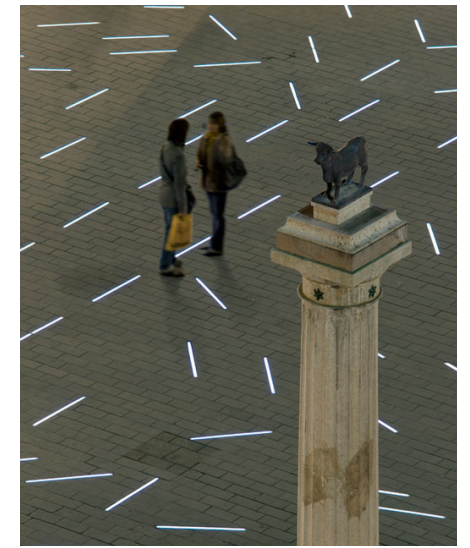
Art offers unusual perspectives on ourselves and our time and place often bringing unexpected delight and unique identity to a place. The Strategy will be designed with flexibility in order to allow the best creative minds to produce the best *magic* works of art.

### Flexible locations

Temporary projections may enliven the space further. Ideas to be explored include projection onto mist and interactive kinetic works.



Interactive skateboard ramp



Plaza del Torico



Olafur Eliasson - images on mist

### The Boulevard

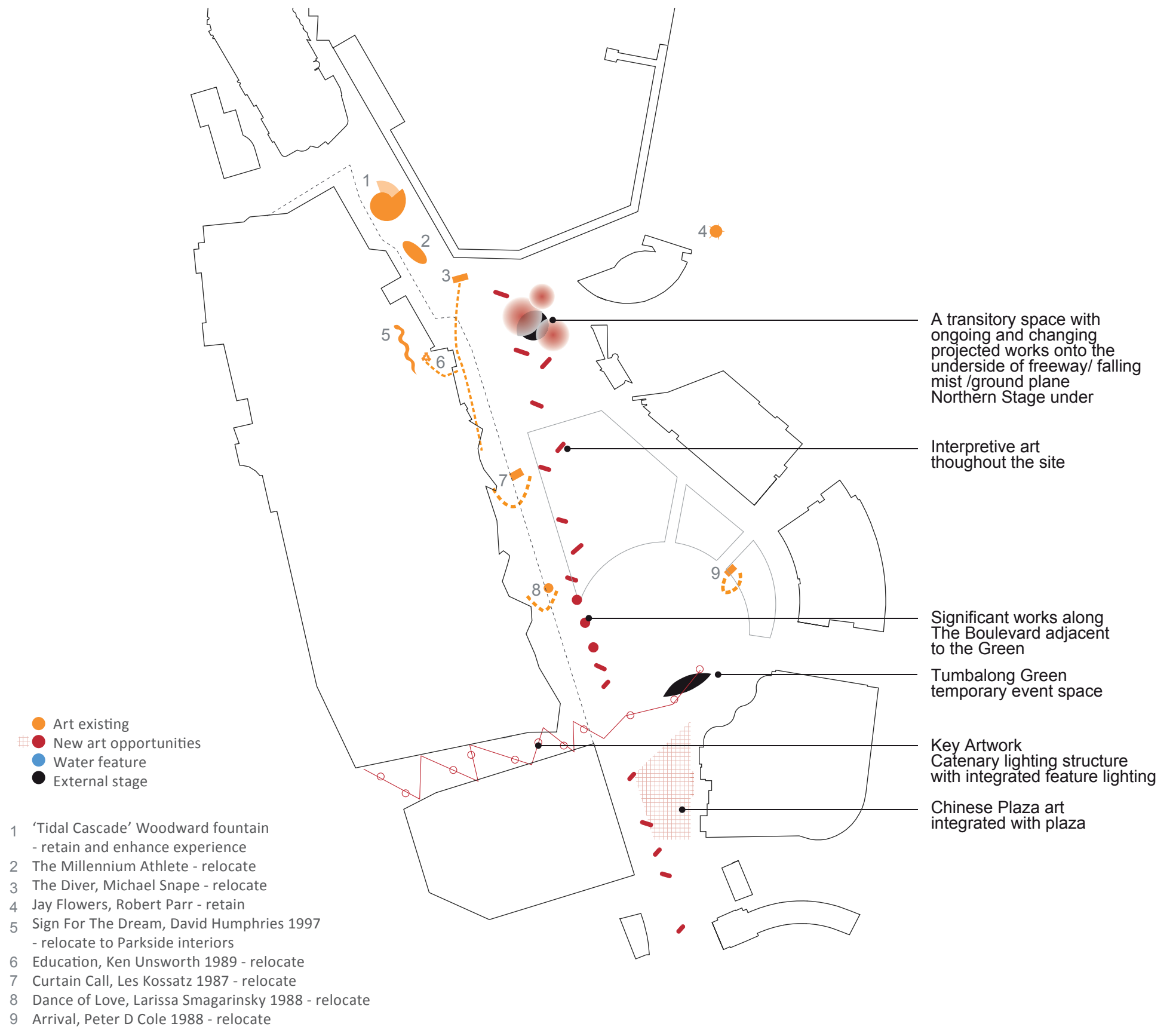
Significant works along the boulevard may be interactive and grand; designed to be moved or poignant, delicate and numerous; designed to move you, engage, plan and provide spatial markers.



Schouwburg, Netherlands, West 8



Luang Prabang, Vietnam



Note: Any relocation of artworks will require consultation with the artist

# 11.0

## CONNECTIVITY, ACTIVATION AND ACCESSIBILITY

### 11.1

#### CONNECTIVITY

##### Public Access

All public spaces are accessible 24 hours a day 7 days a week. There is the ability to close select areas down, dependent on particular event requirements.

##### Pedestrian Network

The primary spaces of The Waterfront, Tumbalong Park and Haymarket Square are linked by The Boulevard. The secondary and tertiary public spaces off these three main public spaces are also linked by The Boulevard. The east west connections through and to Darling Drive link through to The Boulevard, as does the Quarry Street Link over The Event Deck.

Existing light rail stops along Darling Drive have been upgraded to improve direct at grade access through to the Boulevard.

##### Cycle Network

The proposed design responds to the City of Sydney Cycle Strategy and Action Plan plan and integrates into the broader cycle network. The existing cycle route along Darling Drive has been maintained and a direct route through the site from north to south has been introduced. Commuter routes exist around and over the precinct with the recreation cycle links along the Boulevard, Tumbalong and Harbourside Place. The amenity of Darling Drive will be enhanced through new street tree plantings.

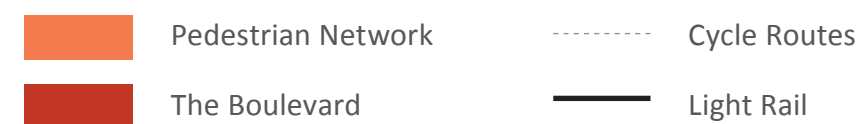
##### Accessibility

East west and north south links have been strengthened significantly from what is there at present. The Boulevard forms an at grade north south link from Hay Street to the harbour. East west links have been established as an extension from the Ian Thorpe pool and Quarry Street over Darling Drive and The Event Deck.

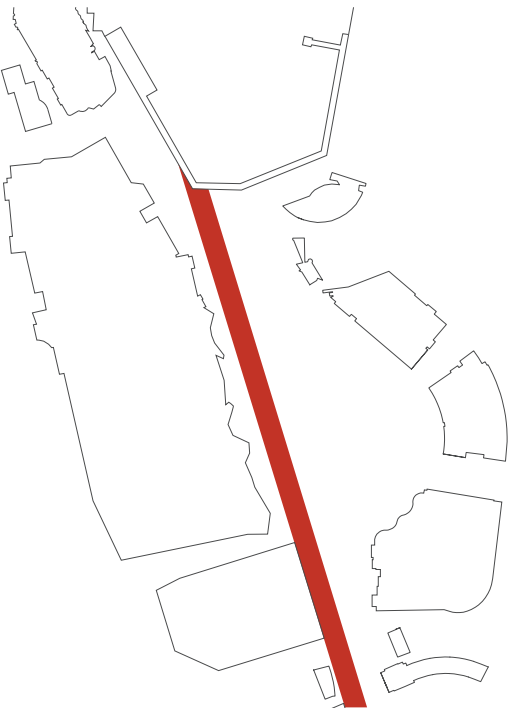
The desire lines from the east and west have been simplified and clarified, with clear links to public transport off Darling Drive through Tumbalong Place and Harbourside Place.

All grade and level changes are fully accessible or have mechanical means by which to navigate any significant level changes.

All the pedestrian routes into and through the site are designed to be an experience in themselves, relating to adjacent soft landscape and built form. They are well lit and supplemented with street furnishings.







North South axis



Pedestrian Network



Urban Grain



Transportation

## 11.2

## PUBLIC ENGAGEMENT

**Social Spaces**

The design provides a hierarchy of spaces based on movement, relaxation and play. The secondary and tertiary spaces are located off the primary areas, being The Boulevard and Tumbalong Park.

These secondary and tertiary spaces provide places for play and interaction with the landscape and the environment. Water interaction and observation has always been an important aspect of the Darling Harbour experience, and this has been further developed in the design, as has the quantity and quality of public relaxation and picnic spaces throughout the precinct.

**Safety And Security (CPTED)**

The core concepts put forward in the Crime Prevention Through Environmental Design have been adopted:

- Natural surveillance- Species selection and location of planting has been designed so there is no screening. All public spaces are easily viewed from several locations, with overlooking. CCTV across the precinct is also in place as an active form of security surveillance;
- Access control- Tumbalong Place, Harbourside Place, The Quarry Street Link, Darling Quarter and the north and south end of The Boulevard provide an opportunity to closely monitor access to and from the site;
- Territoriality- Three main public spaces are clearly publicly owned and frequented. They are expansive and inviting in their materiality. They are well lit and have public amenities and facilities allocated to them; and
- Space Management- Material selection has taken into account the type and frequency of usage of these spaces. Maintenance facilities are provided for within the precinct, as are services, to maintain the precinct.

For further detail please see the CPTED report prepared by Harris Crime Prevention Services

**Flexible Open Spaces**

The Darling Harbour precinct has historically been the place where Sydney comes to celebrate on a grand scale. The design provides for the existing main events- Australia Day and New Years Eve celebrations, and as a live site for major sporting events. The scheme also has The Event Deck, located on the single level ICC Exhibition Hall. This space is a publicly accessible space with services, amenities, and a floor loading of 20kPa to allow for event vehicles on the roof.

Smaller events can also be hosted outside of The Event Deck and Tumbalong Park in Harbourside Place, Haymarket Square, Chinese Garden Square, Pump House Plaza and Tumbalong Place.



Open Spaces

Active Edges

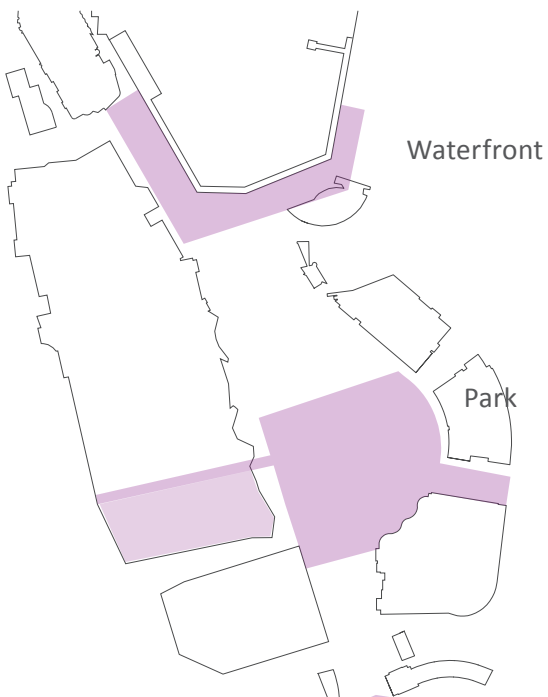


Engagement Magnets

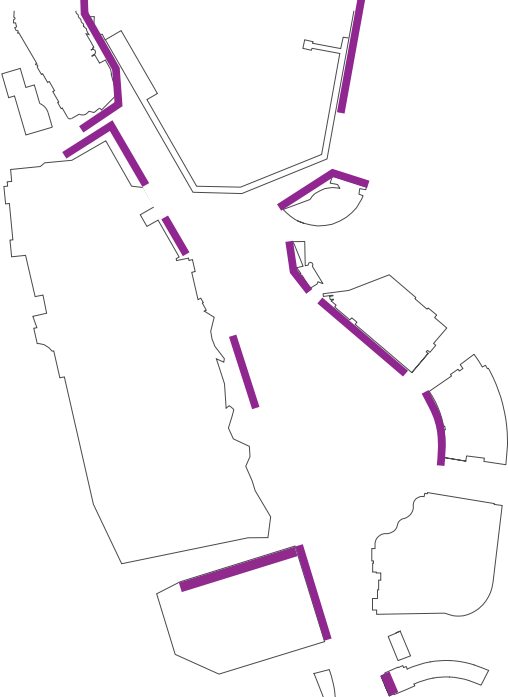


Walk Streets





Open spaces



Active edges



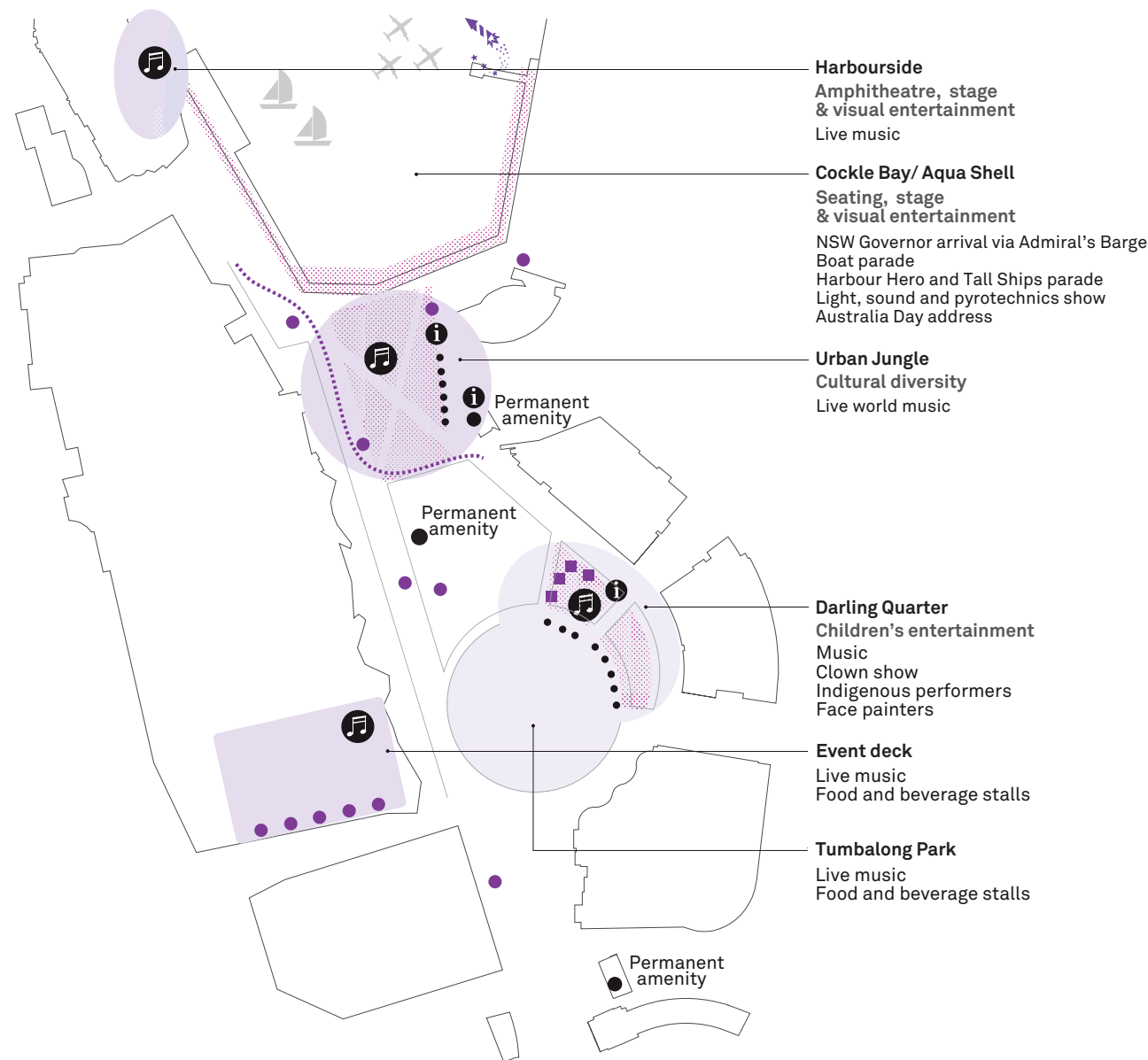
Walk streets



Engagement Magnets

# 12.0 ACTIVATION PLANNING

## 12.1 AUSTRALIA DAY

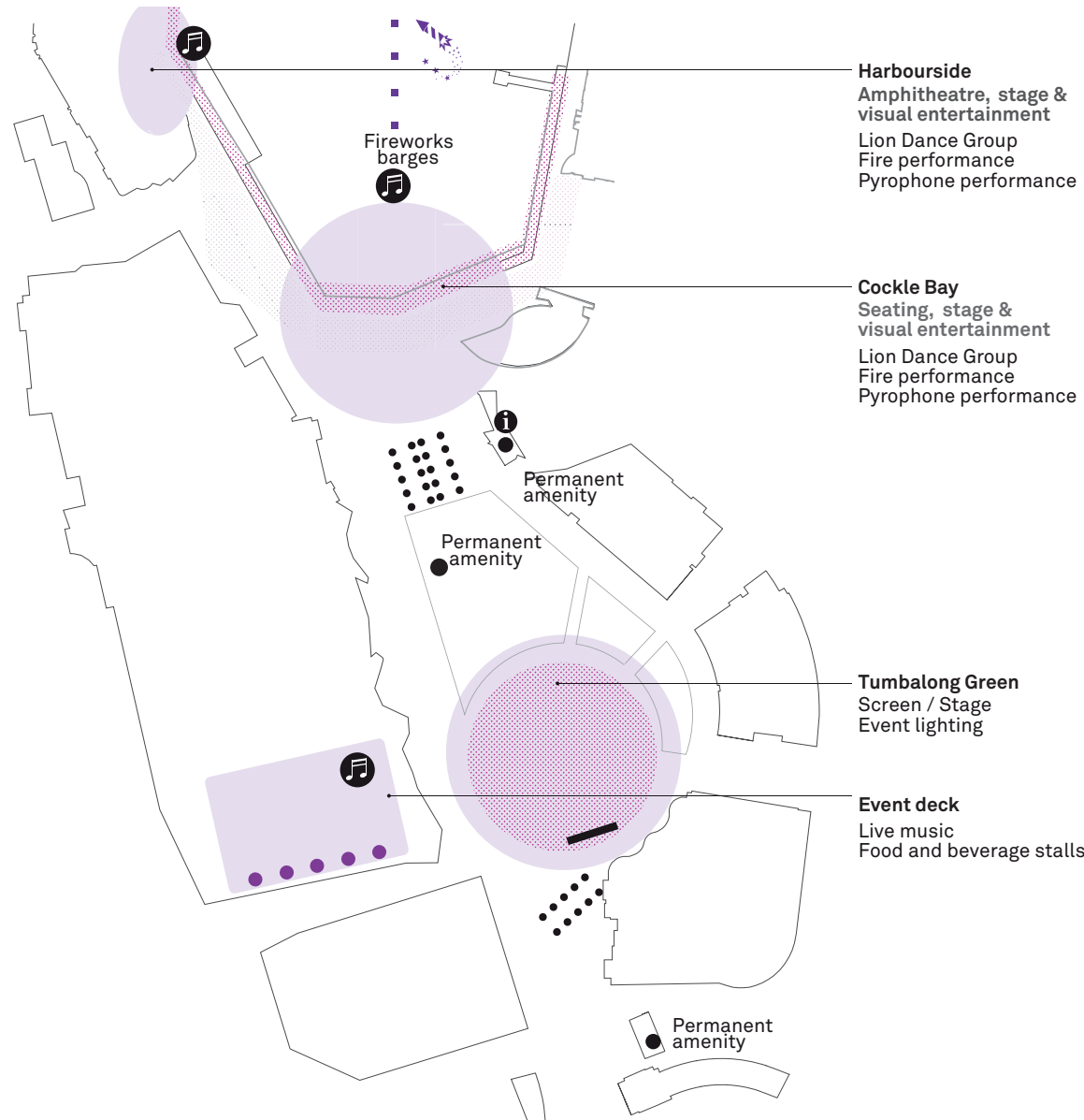


### Australia Day

- Gathering zones
- Secondary zones
- Event precinct
- Roaming entertainment
- Fete stalls
- Stage
- Fireworks
- Amenity (20 temporary)
- Information stall
- Temporary shelters
- Air show
- Boat show
- Harbour activity



## 12.2 NEW YEARS EVE



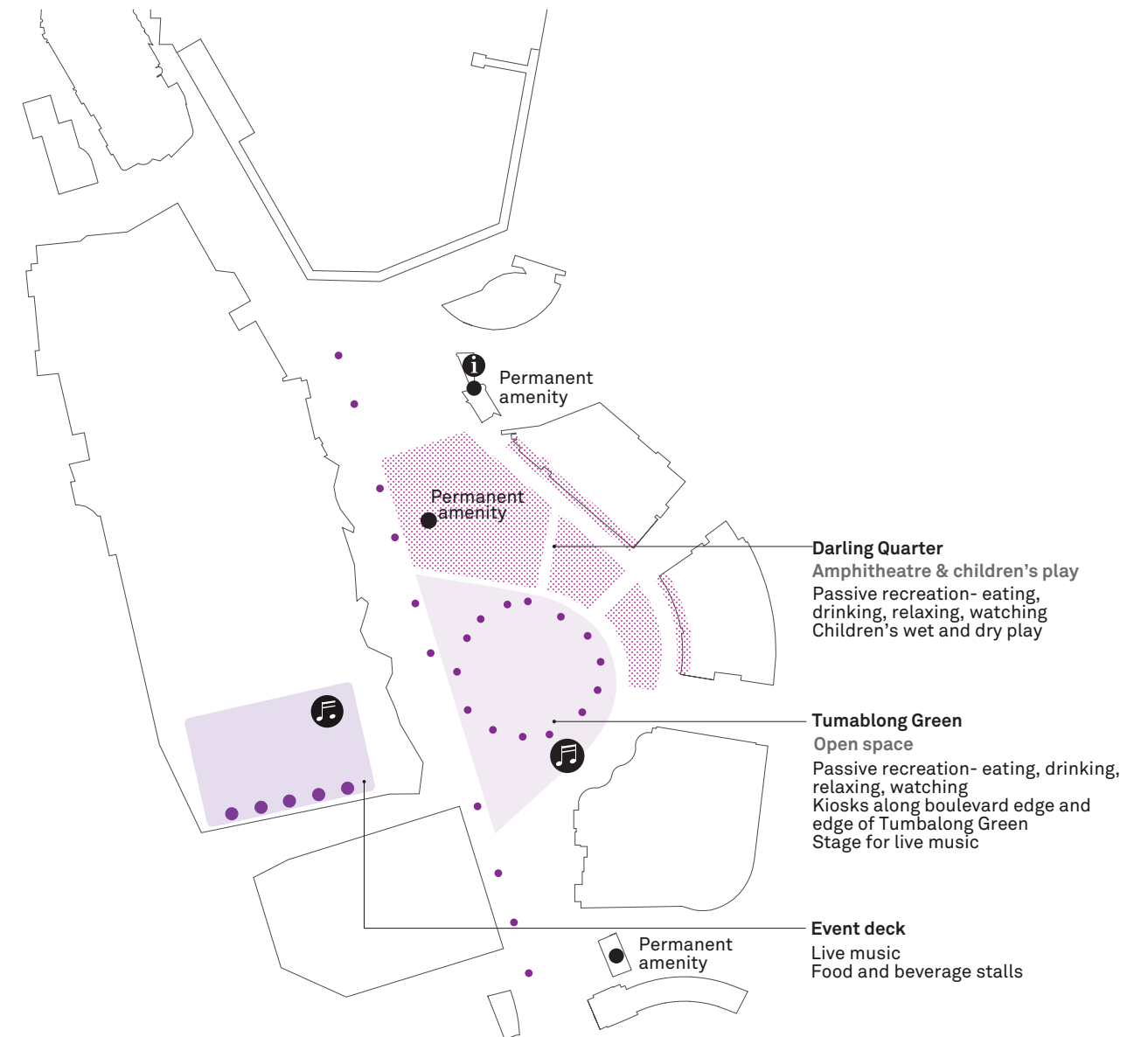
### New Years Eve

- Gathering zones
- Secondary zones
- Event precinct
- Roaming entertainment
- Fete stalls
- Stage
- Fireworks
- Amenity (30 temporary)





## 12.4 CULTURAL FOOD FESTIVAL

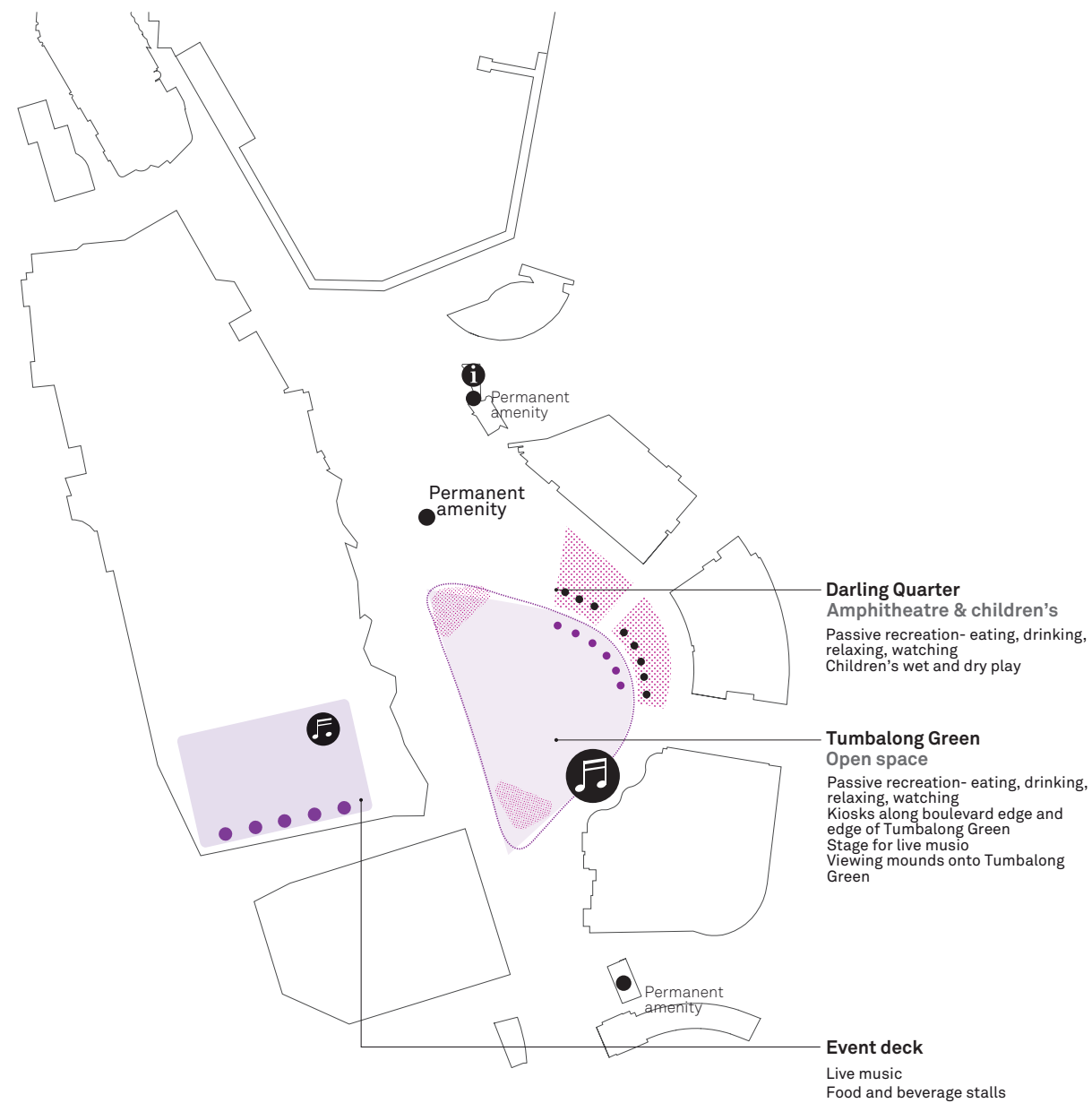


**Cultural event (food festival)**

- Gathering zones
- Event precinct
- Fete stalls
- Stage
- Amenity (30 temporary)



12.5 CULTURAL DANCE FESTIVAL



Cultural event (dance festival)

- Gathering zones
- Secondary zones
- Event precinct
- Fete stalls
- Stage
- Fireworks
- Amenity (30 temporary)

12.6 NON- EVENT DAY



Non event day

- Gathering zones
- Event precinct
- Roaming entertainment (mini train)
- Amenity
- Information stall
- Kiosks



## 13.

## RESPONSE TO INSW URBAN DESIGN AND PUBLIC REALM GUIDELINES

INSW prepared Urban Design and Public Realm Guidelines as an Appendix to the Project Brief dated 17 April 2012, and the following sections of this report describe how Darling Harbour Live addresses these guidelines.

## 13.1

### URBAN STRUCTURE

Sydney has an organic urban grain generated from the flooded valley landscape resulting in distinct bays defining the city. This has created a unique urban structure that has made Sydney distinctive and memorable as a landscape based city. This landscape determinant has generated the urban structure of the inner city with the ridges of the peninsulas formed between the bays, which have a predominantly north-south orientation, establishing the orientation of the street grids. The north-south grid forms the major streets within the city centre, while the east-west streets provide connections across the city linking the bays and associated parklands.

The Darling Harbour precinct is currently not well connected to the urban structure of the city, yet is at a strategic location. This is particularly the case in an east-west direction. This proposal delivers new connections in both the north-south and east-west directions, providing linkages between the existing grids of Pyrmont/ Ultimo and the southern part of the central city. These linkages provide multiple connections as well as a clear hierarchy and give priority to pedestrian networks at ground level. In particular primary linkages and points of address focus on the key public spaces in the northern, central and southern sectors of the overall precinct, as these form major gathering places and are significant to the city structure and public amenity.

The new networks are dedicated to pedestrian and low speed cycle movement in the northern and central sectors, with shared pedestrian and vehicle address and set-down spaces forming new address points coinciding with re-configured light rail stops on Darling Drive. A cycleway runs adjacent to the precinct along the West side of Darling Drive linking to the regional network. Streets in the southern sector are either pedestrian or share-ways, while service traffic is controlled through limited access points and discrete roadways off Darling Drive.

## 13.2

### URBAN GRAIN

The urban grain proposed is a direct derivative of the grain of the surrounding areas. It has the intention of achieving a natural and seamless connection. In responding to the surrounding localities, the Darling Harbour Live site is able to offer the same rich diversity and vibrancy. A shift in scale from a close and intimate grain on the south to a more open and public scale in the north reflects the general urban condition of city blocks to parkland, and also to the harbour's edge.

The urban grain and massing of the building blocks within Haymarket are directly related to the urban grain and massing within Chinatown and Ultimo. The block division within the Master Plan is a direct response to the extension of Little Hay Street and Factory Street in Chinatown and Quay Street, Macarthur Street and Darling Drive in Ultimo. The new main north-south Boulevard leads pedestrians into the southern square and to the heart of Haymarket and links directly to Quay Street, the UTS campus and Central Station. The scale of the blocks, fine grain street-frontages, east west connections and podium heights all relate directly to the surrounding buildings on Harbour Street and Hay Street.

The grain of the central sector on the western side is directly related to the block sizes of the adjacent Ian Thorpe Aquatic Centre, the Bullecourt Apartments, and the Data Centre. The building plot division for the Theatre and the ICC Exhibition is based on an alignment with Quarry Street and the passage between Pyrmont Street and the Aquatic Centre. The building envelope on each plot is based on the importance of each building within the Darling Harbour Live precinct. The Theatre, as one of the anchor buildings within the precinct, is higher than its direct surroundings. It will command attention as a landmark from several points within Ultimo, Pyrmont, Chinatown and the city south locality and will therefore draw people into the precinct.

The location of Tumbalong Place as a new identifiable entry off Darling Drive, open to the sky, and provides vistas to both the east and west further defines the block structure, as does the form of the ICC Exhibition with its transition from single level to double level on the northern alignment of the adjacent Bullecourt Apartments. This is further defined by a proposed upper level link adjacent to the Event Deck which is located on top of the single level component of the ICC Exhibition Centre. This link connects to a pedestrian bridge over Darling Drive and on the alignment of Quarry Street to the west. The eastern side is defined by Tumbalong Park and the existing linkages

through Darling Quarter. The urban grain is reinforced here through the location and landscape definition of the main pedestrian routes, and the integration and extension of the water play elements.

In the northern sector the ICC and ICC Hotel form a landmark at the northern end of the Boulevard and identify a northern gateway for this new part of the city. Here the scale is more public, while the buildings still form blocks with share-way streets between. A sense of arrival is provided through the newly defined Harbourside Place, with a clearly identifiable address off Darling Drive and a clear vista towards the east and the city at street level open to the sky. Further detail on vistas is provided in the View Impact and Analysis report provided by JBA

Loading docks, parking and utilities are carefully integrated, positioned to minimise the impact on the public realm including the removal of truck lay off on Darling Drive, either by locating behind active uses, or where this is not possible, ensuring they are appropriately screened to ensure high levels of pedestrian amenity.



## 13.3

### DENSITY AND MIX

The careful integration of cultural, entertainment and recreational activities, within the PPP site together with primary public open space provide an appropriate mix of amenity and activity and is consistent with INSW's brief design philosophy and reference design. The larger SICEEP site add additional diversity and density of activities and is closely integrated with the PPP component.

## 13.4

### HEIGHT & MASSING

The building height of the core facilities respect the generally acknowledged principles of defining the valley floor through lower heights towards the centre of the precinct, and locating any towers towards the perimeter.

The height of the ICC has been designed to relate to the height of passage over the Western Distributor to ensure it frames and offers views of the CBD from the Western fringe. The sense of movement created by the hotel towers provides a sense of arrival on Darling Drive and a direct relationship in mass between the ICC and the hotels.

The building mass of the ICC flanks the Western Distributor to establish a presence that defines an entrance to the CBD for passing traffic on the Western Distributor and is expressed in two volumes. These are reinforced by the Ceremonial Entrance on Harbourside Place as the main entrance and the built form of the Ballroom and Plenary within.

The height of the ICC roof ranges from AHD RL41.3 along the western edge on Darling Drive up to AHD RL48.5 in the north-east corner which the highest point of the building with the south-east corner being between at AHD RL45.5 (see diagram opposite). This north-east point is intentionally made the highest as it visually addresses towards the harbour and city as well as addressing the key vistas looking south-west from Pyrmont Bridge.

To the south of the western distributor overpass, the mass of the ICC Exhibition, while a single form, is comprised of two components expressed as a base and an elevated roof: a two level part at the northern end adjacent to the freeway structures and the ICC, and single level part to the southern end.

The primary open space of the northern sector remains on the waterfront of Darling Harbour and Cockle Bay. Together with the Ceremonial Entrance described above, this links directly to the northern light rail stop in Darling Drive enabling the waterfront public domain to be extended into Harbourside Place. An active and vibrant waterfront square around the Darling Harbour Bowl fountain remains as an important central element and marker within the public realm for visitors and residents alike.

Tumbalong Park is identified as the main open space of the precinct, and it is to be revitalised and connected to its surroundings in all directions; north-south by the Boulevard, and east-west by the extensions of Liverpool Street and Day Street. Tumbalong Place provides the new at-grade public entrance connecting The Boulevard and Tumbalong Park directly with the Exhibition light rail station on

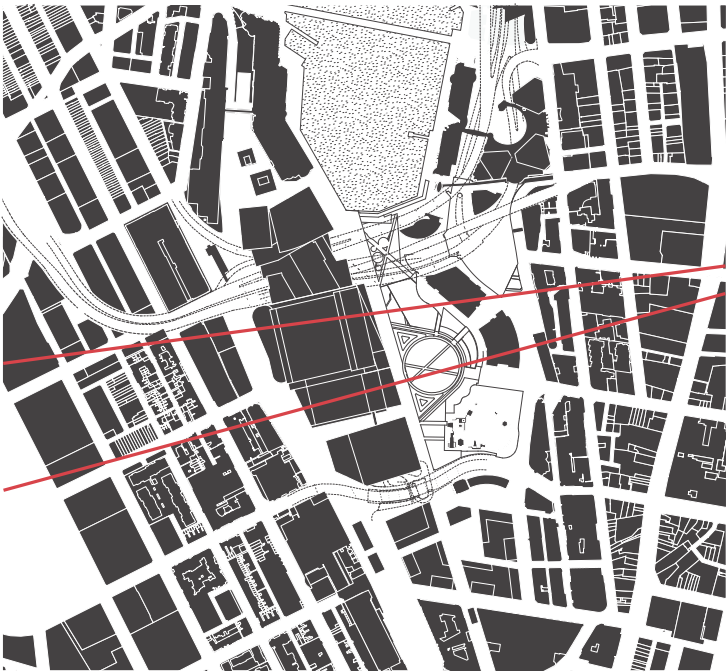
Darling Drive. Tumbalong Place emphasises the importance of public transport, creates a Ceremonial Entrance for The Theatre, Tumbalong Park and the ICC Exhibition. As an active civic plaza, it is flanked by retail uses and is an important new link to Ultimo and Pyrmont.

Within Ultimo the highest building in proximity to the site is the Peak Apartment Buildings (AHD RL 153m); within Pyrmont the highest building close to the site is One Darling Harbour (AHD RL 75m), and within the CBD there are many high towers of which the closest to the site are at Darling Park (RL max 128m) and the HSBC Tower (RL 176m). Chinatown is the only surrounding area which does not contain high buildings. Chinatown's distinctive character is instead created through its history, high density and smaller urban grain.

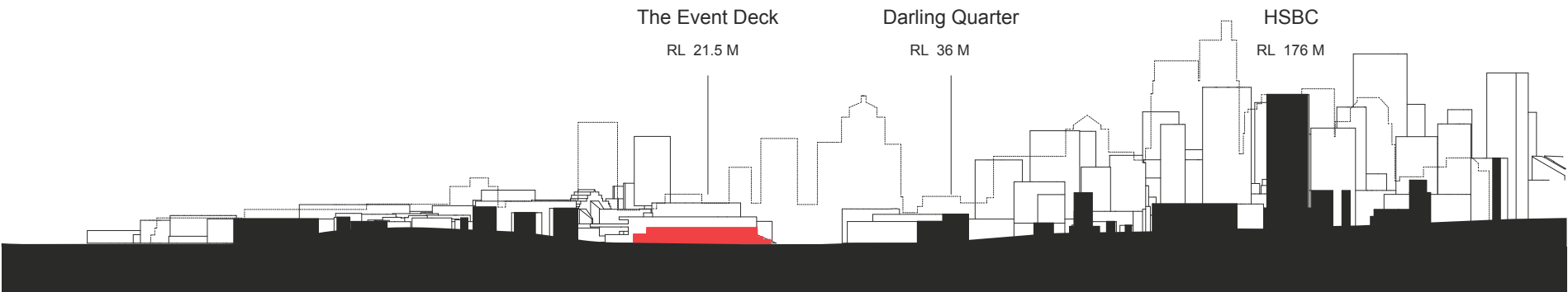
The urban position and the importance of Darling Harbour is strongly related to Cockle Bay and its central location within the valley floor. To achieve and emphasise this, and to reinforce the connections with the surrounding areas including the CBD, the heights of all buildings have been carefully considered and assessed in their context.

The height of all buildings within Darling Central are lower than the existing buildings on Pyrmont Street directly above it. The ICC Exhibition in front of the Data Centre is AHD RL 44.0m and the Event Deck in front of the residential building is AHD RL 21.5m with a perimeter planter/balustrade of 1.2m above. Ensuring all the buildings within this sector are lower than those on Pyrmont Street strengthen the effect of the valley floor versus the western ridge. The views from the adjacent Bullecourt residential building directly into Darling Harbour are also preserved. The Theatre, at AHD RL 44.0m, is higher than the Ian Thorpe Aquatic Centre behind it with this height difference being designed to create a focal building for the precinct. The height of The Theatre allows for view sharing from William Henry, Goulburn and Day Streets.

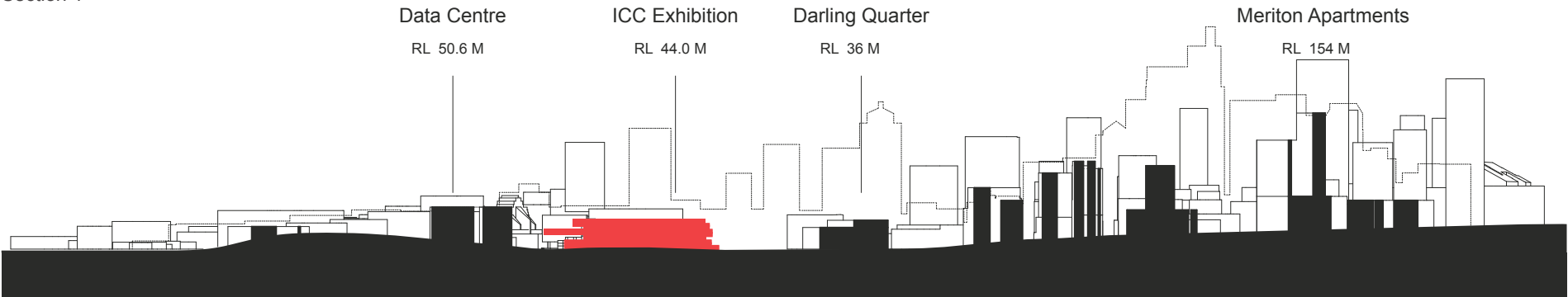




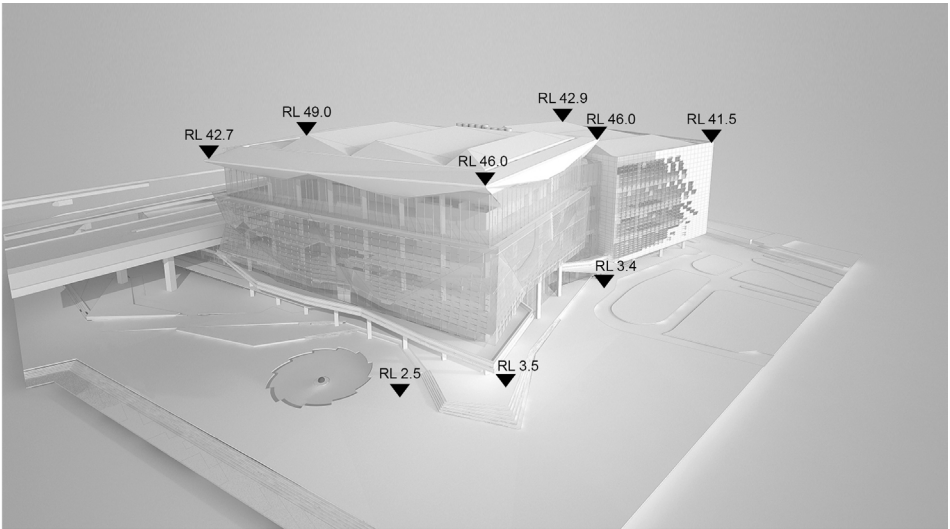
Section 2  
Section 1



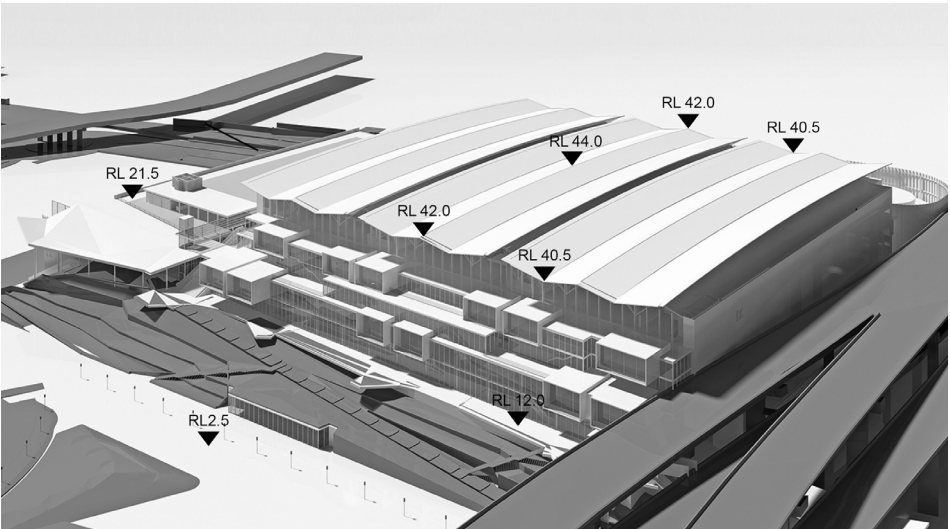
Section 1



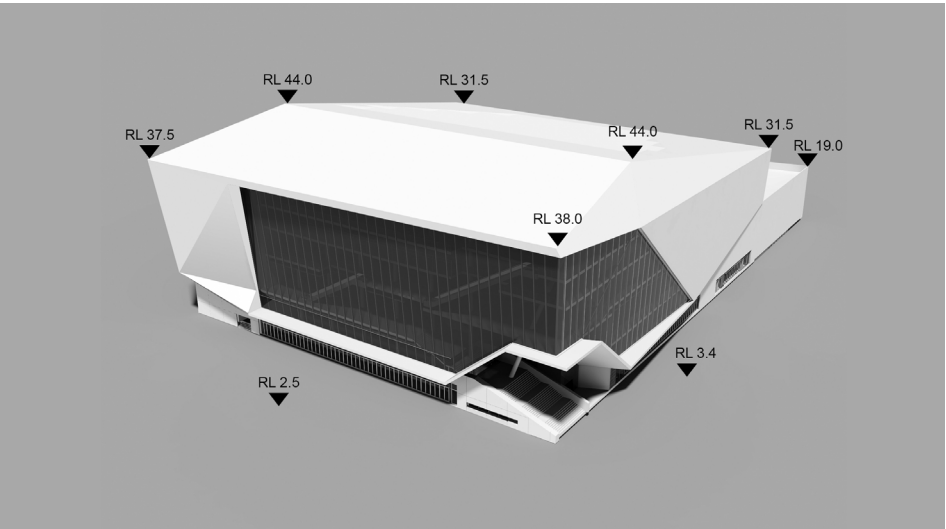
Section 2



ICC



ICC Exhibition



The Theatre

## 13.5

### FAÇADE AND INTERFACE

The design approach is that there are three unique buildings on the site, each with their own identifiable character, reflective of its use and programs. These three buildings are then tied together by a strong landscape strategy and approach to the building bases where they interface with the external public realm. Importantly the approach has been to ‘draw’ the external Public Realm into the ground level and elevated entry lobby areas of the buildings to demonstrate that they are public spaces for public habitation.

This has been achieved through a continuity of public realm materials into these spaces, including the paving and also the predominantly lower level clear glass that facilitates strong visual connections. Where possible direct access is provided from the internal spaces to the outside. The base of the buildings have retail components insuring at the pedestrian interface level the buildings are permeable, engaging and active irrespective of the program of events occurring above.

#### ICC

The ICC facade form has four main components which give definition to the program within and creates ‘identifiable destinations’ within the scale of the City. The two main destination programs are the ‘Grand Ballroom’ and the ‘Darling Harbour Theatre’. These two spaces are clearly distinguished by their strong forms and material similarity. The ‘Grand Ballroom’ signified by its expressive ‘floating’ roof and the ‘Darling Harbour Theatre’ by its similarly clad expressed box housing it. The middle facade which is a more homogenous crystalline like surface that encases the ‘convention meeting program’ specific spaces; while below it is more permeable with accessible terraces and recessed clear glazing where the more public services and spaces are located, including the ICC Restaurant in the north-east corner at RL10.9. The upper triangulated crystalline like facade consists of two main materials and systems: a curtain wall with ‘clear’ high performance IGU and 50% transparent panels with integrated external sun shading fins; and a metal faced prefinished cladding system for solid areas of facade. Selective areas of the metal cladding facade also include integrated external fins to eliminate reflective glare to the Western Distributor. Refer to the elevations and visualisations for locations and extents of facade materials.

#### ICC Exhibition

The ICC Exhibition is intentionally different to the other two buildings and not expressed as a strong singular form but a more recessive and articulated collection of programmatic elements in response to its larger overall scale. It is the largest building on the site and therefore needed to be handled in a different way as is described in the ‘5 Design Principles’ which defines the ICC and The theatre as the ‘anchor buildings’.

The main expression of the ICC Exhibition is the roof of the upper halls which is a large 13,405m<sup>2</sup> and +100m free span space combined with the smaller grain ‘meeting room’ pods located below and in front of this main form. The main roof is intentionally strong giving identity to this significant elevated space and creates the ‘5th Facade’ of the building to the taller buildings surrounding it.

The ‘meeting room pods’ we specifically expressed strongly as separated elements to help to bring a human scale to the large exhibition spaces behind which, when empty, are inactive. The meeting room pods have deep recessed glazing and lined in timber to give a ‘habitable and warm’ expression to the building.

The surrounding circulation spaces can break out onto large terraces in the landscape at RL12.0 and onto smaller elevated terraces at other levels which provides a more diverse and active reading of the overall building form and one which is connected to its environment. The materiality of these terrace areas will have a continuity between inside and out to assist this sense of connectivity. Two clear public entries are provided; one at the north, and one at the south. These provide an identifiable connection from the public realm up to the RL12.0 main entry and lobby concourse.

The South Entry is open air and echoes The Theatre entry providing a covered outdoor public meeting space on the stairs. The North Entry is also open mirroring the south entry formally. The balance of facades to the north, west and south which enclose the exhibition halls are large pre-cast concrete panels. These walls face the non-active area of Daring Drive, loading docks the side of the Western Distributor so are appropriately dealt with a more robust materiality. Refer to the elevations and visualisations for locations and extents of facade materials.

#### The Theatre

The Theatre uses a similar formal approach to the ICC of a permeable but solid base with retail spaces and a more expressive and sculptural upper clad form. The base uses a combination of pre-cast concrete panels and open areas of clear glazed shop fronts. The shop front areas can be operable to allow a flow from the inside of the Food & Beverage areas into the public realm spaces. Particular to The Theatre is the large public entry stairs beneath a large entry canopy to the north-east that creates at the same time an expressive and clear public entry to The Theatre but also a large outdoor covered public meeting place for the precinct and a place where outdoor performances could be held.

The upper clad form uses two main facade systems; a tall steel supported vertical glass wall for glazed areas to the main circulation spaces; and a perforate metal cladding system to the remaining ‘solid’ zones. The perforate metal clad areas also covers and shades secondary glazed locations as well as well as louvre areas for plant zones ensuring a monogenous reading of the form. The large glazed area to the main circulation spaces allows uninterrupted views out to the city and, especially at night, views into these active circulation spaces that provide a sense of the excitement within. Refer to the elevations and visualisations for locations and extents of facade materials.

## Interface

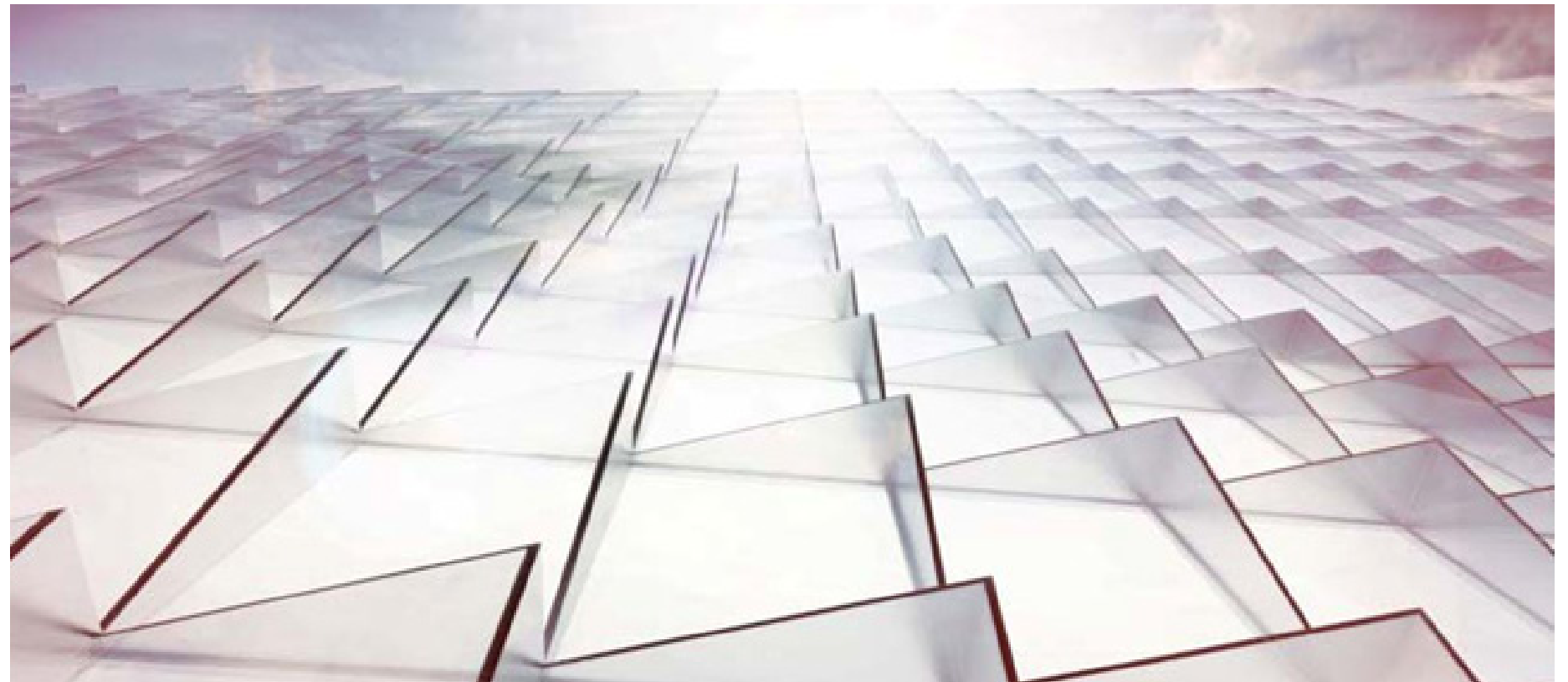
The public spaces are designed from the point of view of everyday activity, and at the same time they are created to cater for specific event modes. Darling Harbour is also a place where activity and cultural exchange can meet in a natural way. It's close proximity to and relationship with Chinatown and the Chinese Gardens can be strengthened and injected in the place making of Darling Harbour. This inherent flexibility in the design of the places and spaces within the precinct is one of its key strengths.

To achieve relevance as well as flexibility within the design of the public activated spaces, different place making principles have been applied. There are spaces that are large and open to the air, such as Tumbalong Place, Tumbalong Park, Harbourside Place, Haymarket Square and the Event Deck. There are also spaces that are created for more intimate gatherings and activities and/or partly covered by the buildings, such as the terraced landscape in front of the ICC Exhibition and The Theatre retail opportunities along the Boulevard. The outdoor Wi-Fi lounge of the ICC and the breakout spaces from the Exhibition Concourse of the ICC Exhibition will further enhance the public domain diversity.

Another important category of space within Darling Harbour Live is the commercial and retail spaces. These spaces contribute to the place making and offer public areas such as the retail spaces of the Theatre and the coffee bars of the ICC. These commercial spaces will spill out into public space through terraces and open shop fronts to attract and provide services to the Sydneysiders and all visitors to the precinct.

Whilst adding activities and supporting them by functional programs, it is important to create 24-hour life in the precinct. The addition of residential and student housing in Haymarket (subject of a separate application) will significantly add to this life. The mix of facilities that have an 18-hour working mode, mainly focused on the day and the evening and the residential, creative industries and cultural uses, enriched by the events within the three new venues and the SHFA activation program will create a vibrant, activated and diverse precinct.

Given the central concept of an intensified landscape experience within the renewed precinct, an important dimension of the interface design is the quality and detailing of the public domain, including planting, street furniture, pavilions, integrated and ephemeral artwork, lighting, all of which add character, identity and richness to the relationship between spaces and buildings.



ICC Facade



13.6

SOLAR ACCESS AND SHADOWING

While the development does include an increase in overall height of building forms for the PPP care has been taken to minimise impact on the existing solar access and minimise any increased overshadowing. Importantly solar access in mid-winter is fully maintained as per existing to Tumbalong Park and the children’s playground and no increase in overshadowing has occurred due to the three main PPP elements. The shadow diagrams included in the drawing set demonstrate the shadows of the existing condition and proposed development.

ICC

The ICC is a larger and higher building than the current Sydney Convention Centre but as it is located to the north of the major Western Distributor road infrastructure its impact on solar access and overshadowing to public spaces and neighbours is actually minimal. Further to the south-west the Western Distributor wraps around the back and Darling Drive is below so an increase over-shadowing in this area has negligible adverse impact. The important public space currently and in the future is directly to the east of the ICC along the waterfront and despite the increase in building size has only a small increase in overshadowing mostly to the south-east. The majority of the public space retains its existing solar access and importantly the waterfront edge has no impact at all as is demonstrated in the shadow diagrams.

ICC Exhibition

Great effort has been expended to minimise the overshadowing impact of the largest building proposed which is the new ICC Exhibition Centre. Through to use of an innovative approach to loading that has allowed the building to be positioned west tight to Darling Drive, and creating a stepped profile to the east, solar access is maintained similar to existing and no significant increase in overshadowing has occurred to existing public spaces mid-winter as is demonstrated in the shadow diagrams. A stepping profile to the south created with The Event Deck helps to maintain solar access to newly created Tumbalong Place. In mid-Winter solar access can be maintained to the base of The Theatre along its north face ensuring solar access to the Bar & Food retail strip.

The Theatre

Increased overshadowing from The Theatre is predominantly to the south of the building over what is currently service roads, Pier St access ramps and the elevated Pier St. This area continues to be a service access area and not public space limiting the impact. The preservation of late afternoon mid-winter solar access to the Chinese Garden and the space in front of the Chinese Garden is maximised by the shaping of The Theatre roof form down along the east edge. Full solar access to the Chinese Garden entry and the boundary walls are maintained as demonstrated in the shadow diagrams.

13.7

STREET ACTIVATION

Within the PPP site (subject of this application), activation is provided to key pedestrian routes and these are referred to in section 11 and 12 of this report

In addition the key new public spaces of Harbourside place and Tumbalong Place are provided with edge activation and are further activated during special events. The proposals for Darling Drive are covered in section 8.6 of this report

13.8

DETAILS AND MATERIALS

A fundamental aspect of the concept for this project is giving primacy to the expression of the landscape and topography of the Sydney Harbour foreshore, with its dense and delicate vegetation, its tall distinctive tree canopy, its filtered light and shade, and its bays and sandstone escarpments. This landscape gives the city its distinctive character and sits at the heart of the precinct, permeates the public realm, and informs the nature of the architecture, the materials and detailing.

Additionally this precinct, while distinctive through the dominance of the public realm, is also a seamless part of the experience of the city, and hence an appropriate variety of scale and character is necessary within the architecture, with a balance between coherency, essentially through the public domain, landscape, and built form interface, and diversity, in distinguishing between public and private architectural elements, expressing different typologies, and giving individual identity and monumental scale to key elements. Given the Darling Harbour precinct will typically be highly activated, it is important that the architecture is prominent but not dominating, caters for normal operation and also support the public realm when in an event mode. It is therefore considered appropriate to use neutral and predominantly natural materials on the building’s exterior and activate the architecture with colour and vibrancy from within.

The key base materials proposed for the precinct are:

- Architecturally finished pre-cast concrete in lighter tones of colour, for low level façades and terrace walling;
- Off form or pre-cast concrete generally in varying lighter colour tones, with limited exceptions of darker colour tones to create emphasis to express and articulate elements within the architecture of the precinct;
- Clear and semi-reflective vision glass, to subtly reflect light and the dominant and dramatic skies of Sydney, enhanced by metallic highlights;
- Dark and light coloured metallic roof cladding generally recessed behind and secondary to soffit and edge detailing; and
- Metal and timber/plywood lining to ceilings and soffits, and interior walling in the major venues, with rich colour interiors to the Theatre.

For further detail refer to the Schedule of Finishes

13.9

PLANTING

The planting scheme will provide street level amenity, assist with way finding and mark the site with a unique identity:

- Boulevard- signature tree species, unique character, shade;
- Parkland and tiered landscape- indigenous species playing on the historic valley floor landscape;
- East west links- palms – connection back to Sydney, typical Sydney species, landmarks for entries; and
- South sector- built on Chinatown character.

The strategy for water conservation with the species selection is:

- Planting low water use species;
- Minimal use of high maintenance landscaping;
- Irrigation of landscaped areas with recycled water or grey water; and
- Landscaped areas are to be designed for high water efficiency through use of native ‘waterwise’ plants.

13.10

TOPOGRAPHY

The intent has been to reinforce the valley floor, defining it with The Boulevard through the centre of the precinct with the built form running along the western edge of the site, replicating the historical topography of the area with the harbour and sandstone escarpment.

The design of the ICC Exhibition has the building stepping back, away from the Public Realm. This reduces the scale, mass and presence of the ICC Exhibition on the public realm with the landscape folding up to the building. Where the building is single level, the landscape tiered up, over and onto The Event Deck. The design of the spaces facing into the Public Realm provide sliding walls to open the internal space to the outdoors.

13.11

WILDLIFE AND ECOLOGY

Groundcover/Shrub planting and the majority of trees are native to Sydney and will attract a variety of local bird species and other animals.

Stormwater will be treated through bioretention swales along The Boulevard. Stormwater will enter the harbour cleaner than at present. This will have a positive impact on the marine environment.

Refer to Section 8 for further detail.

13.12

MICROCLIMATE

Wind movement will be carefully managed through the design of built form with wind tunnel testing during the design development phase to minimize the wind tunnel effect within or around the development. This will be balanced against the need for air movement through the site to help reduce as felt temperatures.

Tree selection and location has been strategically chosen to allow for shaded connection along main connections and gathering spaces. Shading is also provided around the play area and integrated within the secondary public spaces.

The heat island effect will be partially offset by the increased soft landscaped area. Water features assist to cool ambient temperatures down and are interspersed throughout the Public Realm with varying levels of interaction.

Refer to Section 8 for further detail.

13.13

LIGHTING

Architectural lighting is provided to enhance the built elements and to achieve varying effects depending on the type and nature of the event.

Lighting is provided within the Public Realm to provide visual assistance, assist with wayfinding and personal safety.

Key feature trees within the precinct, such as the figs, will be lit . A catenary lighting system is provided above Tumbalong Place to create a more intimate environment.

13.14

FURNITURE

Street furniture will utilise an established palette of street furniture that will connect to the City of Sydney and Barangaroo.

Located throughout the precinct place- specific, custom designed pieces will be provided to distinguish unique spaces and create a sense of place for each of the primary public spaces.

Refer to Section 8 for further detail.

# 14.0

## SIGNAGE AND WAYFINDING

Signage and wayfinding refers to all building identification, wayfinding, information, naming & branding signage and other building signage elements within the public realm. This will be developed in conjunction with the 'Infrastructure NSW SICEEP Permanent Signage and Advertising Guidelines'.

The Darling Harbour Live precinct will ensure a positive and memorable visitor experience to enhance the perception of Sydney as an international city of significance. The signage and wayfinding design will create a positive contribution to this.

As a place of significance to the city of Sydney, it will actively engage with and effectively serve a wide range of audiences with variable visual, mobility or language capabilities. The signage will appreciate this diverse range of audiences while also being uniquely specific to the site, its various activities and functions, and will instil a sense of civic pride.

Wayfinding and signage for SICEEP must logically and variously be defined and informed by the evolving urban planning, landscape, architectural and branding /marketing strategies and the established overarching urban, architectural and landscape design principles.

The wayfinding solution will be designed in accordance with world's best practice, embracing new technologies and modes of practice. The objectives of the signage and wayfinding are:

- Reinforce architectural, urban design and landscape design principles;
- Create urban legibility and the provision of unambiguous public information;

- Align with brand/marketing positioning; and
- Enhance the sense of place and contribute to shaping a memorable place and visitor experience

Landmarks are important in wayfinding as they stand out from their surroundings and attract attention. They function as points of reference and assist orientation, user reassurance, comfort and security by informing public understanding defining where you are as a visitor and how you reach your destination.

The public domain is to be developed as a whole. Wayfinding information will relate to the whole precinct, and be well connected to the city and adjoining neighbourhoods. It will form one cohesive family of public information, with one identity, and the potential for sub-identities for each facility.

Legibility will be crucial as it offers security and ease of use, but also heightens the potential depth and intensity of human experience, thus providing scope for memories and meanings both those that are collective or shared and also individual and personal.

Proposed locations for building signage are illustrated in drawings:

CO\_AR\_D\_410000 to CO\_AR\_D\_420000

EX AR D 400000 to EX AR D 410000

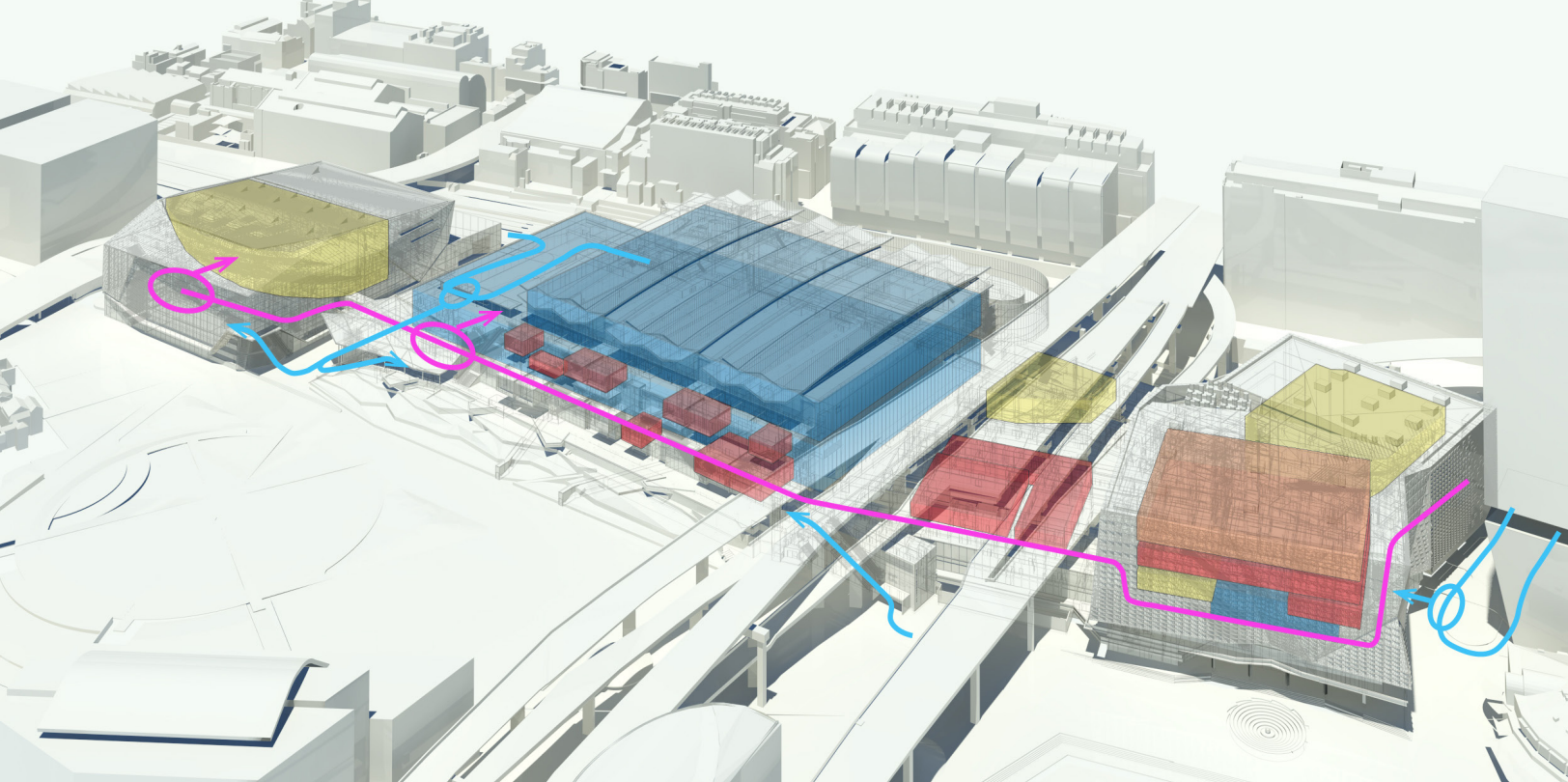


Diagram demonstrating interconnectivity of the three main facilities and points of entry



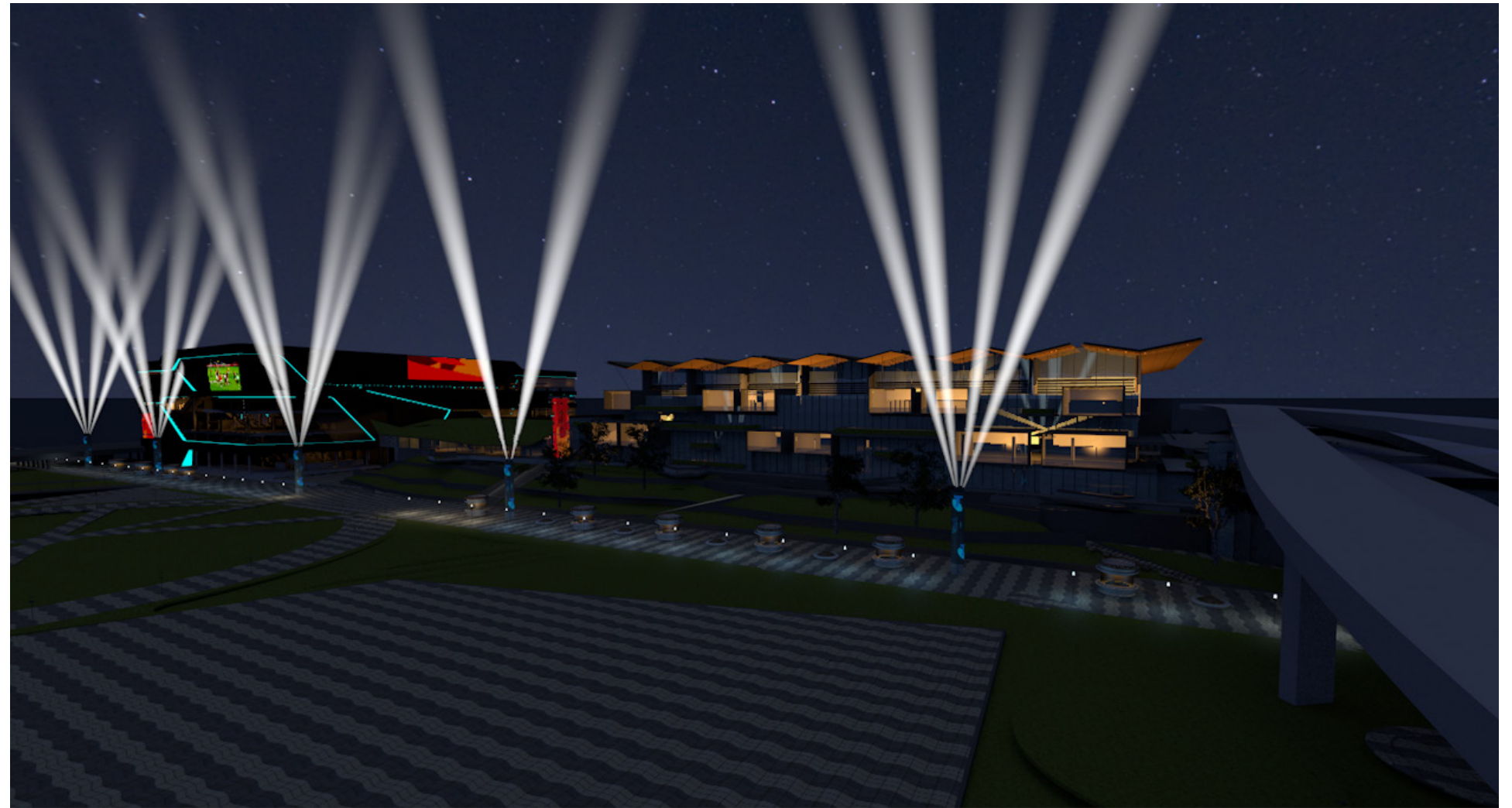
## 14.1

### NAMING & BRANDING IN THE PUBLIC REALM

Darling Harbour Live will only be a truly memorable destination within Sydney when it attains the visual excitement of places like Times Square or Leicester Square. Darling Harbour Live will seek opportunities to display foundation partner names, naming right sponsors logo's and names throughout the Precinct using flags, light/media pylons, showcase product and materials, banners, signs, electronic surfaces e.g. LED Boxes or facades. It is recognised that as a critical part of State infrastructure the naming, branding and lighting strategy must be sympathetic to its proximity to Darling Harbour and not privatise the Precinct, but add to the vibrancy and activation, allowing it to be recognised as the entertainment heart of Sydney – “Darling Harbour Live”.

The naming rights will be limited to the Theatre and the Event Deck, a facility which will be enjoyed by all passing through or enjoying the Public Realm akin to the Federation Square in Melbourne.

In addition, the Public Realm will be serviced by interactive wayfinding information booths and analogue signage to ensure Visitors can easily circulate around the precinct to their destination.



# 15.0

## THE ICC

### 15.1

#### BUILT FORM

As a visual representation for the Precinct, the ICC Convention (ICC) imparts a memorable architectural presence on the harbour’s edge. It acts as the culmination of a sequence of entertainment, exhibition and meeting venues, which define the western edge of the Public Realm.

The ICC is expressed as a sculptured form reacting to the urban context and expressing and celebrating its internal program. Where the ICC Exhibition emphasises and informs its landscape connection with Tumbalong Park to the south, the ICC responds to the visually prominent bay and promenade setting, casting an unmistakable presence.

The design identifies with its dramatic setting and proximity with the harbour, however most importantly it successfully addresses the needs of the INSW brief and program. Darling Harbour Live has engaged with the Operator to ensure the planning solution responds to the technical and functional demands of the building, to deliver a world class Facility.

Within the ICC, the principal destination spaces, namely the ‘Grand Ballroom’ and the ‘Darling Harbour Theatre’ are given specific identity through formal massing and materiality that operates them from the balance of the building form. Specifically the ‘Grand Ballroom’ is given an identity as a destination in the City through recessing this level and creating an outdoor terrace. The Convention focused programs are within a crystalline and transparent facade form below. These spaces are held by a layering of more public floors below. These lower levels are open and permeable, activated by terraces and a variety of program.

On the western Darling Drive frontage, the Darling Harbour Theatre is defined by an alternative alignment and carries its own expression within the overall ICC composition. Clad with a combination of transparent, translucent and opaque skin the external facade material is a direct product of the internal operation and character of the spaces immediately behind the facade. Breakout and circulation spaces are connected to the context through a transparent skin. In contrast opaque areas map the cocoon of the Darling Theatre to the exterior.

### 15.2

#### BUILDING FINISHES

The clarity of form and the choice of principal external materials for the ICC clearly distinguish it from the predominantly white and complex forms of the adjoining Harbourside to the north and southern overpass backdrop. The ICC materiality responds to the building programs, giving primary identity to the two main destinations and the balance of the programs reading as secondary to these.

The lower ground plane levels carry the same civic materiality as the context. The stone paving of the city is extended into the lobby and lower levels as further expression of the public nature of these floors.

The terraces which extend out of the building at these lower levels are wrapped with a similar stone, expressing their linearity and definition as an extension of the public realm.

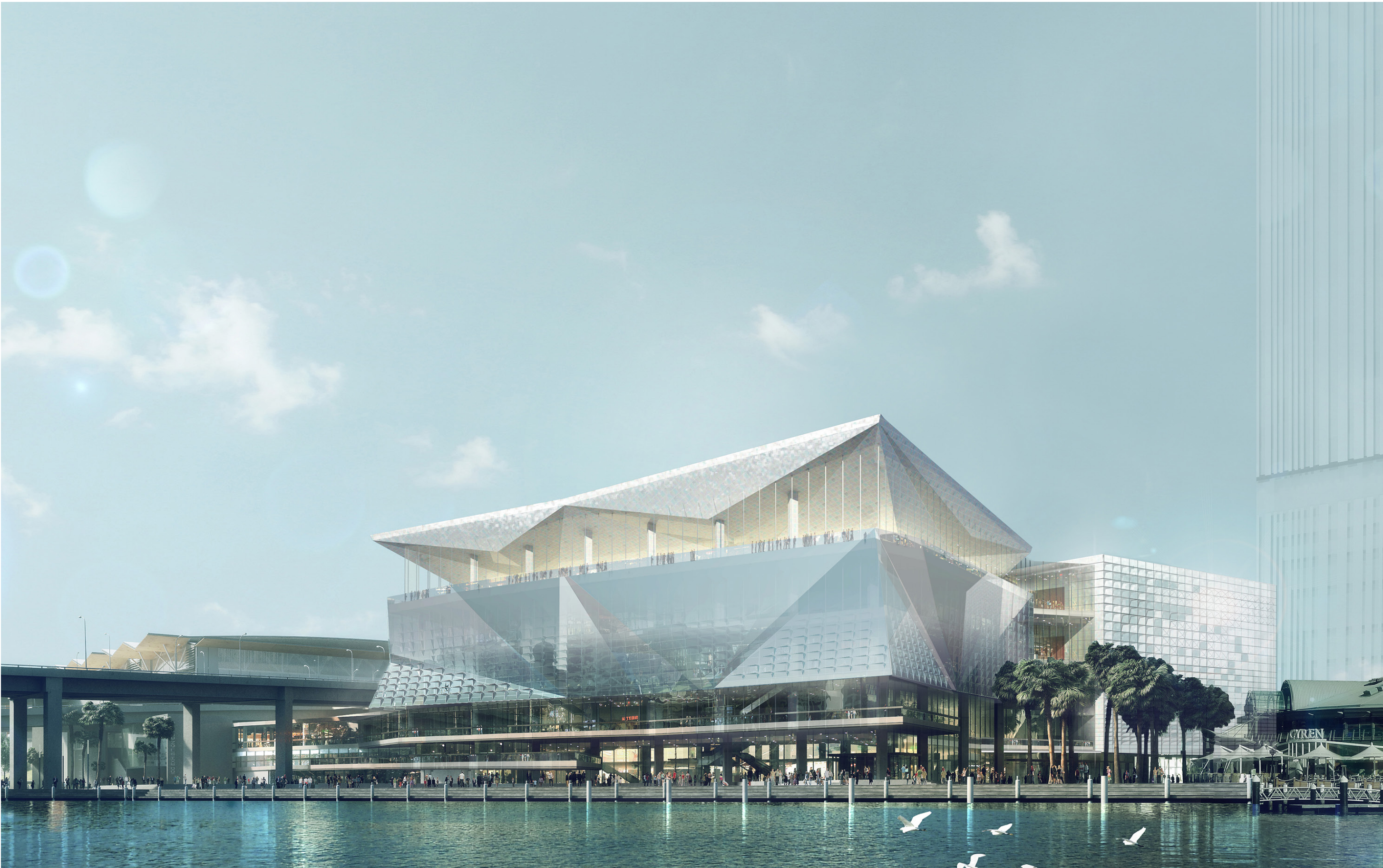
Supported by the terraces below the mainly convention meeting spaces on the upper levels are wrapped with a shimmering, folded facade of metal and glass. Glass windows varying in scale from smaller openings down low, to larger, taller openings higher are shaded by reflective metal fins.

The exterior architectural statement is off set by the ICC interior design which presents an understated, sophisticated and timeless quality response. Lighter, transparent forms on the lower levels of the exterior are contrasted with a more solid internal palette.

By day the ICC offers a permeable expression through the combination of the expressed recess of the ‘Grand Ballroom’ terrace, the occupiable terraces of the lower floors and its folded facade below which is more reflective and shimmering, connecting with its harbour side location. By contrast at night the ICC transforms to reveal and express the diverse internal spaces behind the facade. This transformation in scale adding a layer of intimacy and transparency to the edge of Cockle Bay.

Capturing exceptional city skyline and harbour views, not to be forgotten by delegates and visitors, the ICC boasts an outstanding outlook. Meeting rooms and their adjacent pre-function spaces enjoy the expansive views over Sydney through highly transparent glass facades, while the ‘Grand Ballroom’ takes advantage of the Sydney climate with an external terrace. The high quality design, matched with cutting edge technology is sure to be highly desirable for conference use.





ICC Sydney Perspective



## 15.3

## INTERNAL ARRANGEMENT

For drawings relating to the ICC, please refer to the following Architectural Drawings:

CO\_AR\_D\_200000 to CO\_AR\_D\_211000

CO\_AR\_D\_410000 to CO\_AR\_420000

CO\_AR\_D\_500000



Habourside Cockle Bay