

Central Park - Block 4S - Student Accommodation

GFA Calculation (DA Stage)

REVISION		
REV	DATE	DESCRIPTION
B	04.09.2013	ISSUED FOR INFORMATION
A	04.09.2013	ISSUED FOR INFORMATION

Level	Referenced Drawing	GFA** Residential	GFA** Non-Residential	GFA** TOTAL
Lower Ground Floor	PA-A-5759 (08)		895.8	895.8
Ground Floor	PA-A-5760 (08)	870.6	527.4	1398
Level 1	PA-A-5761 (06)	1753.4		1753.4
Level 2	PA-A-5762 (06)	1579		1579
Level 3	PA-A-5763 (06)	1434.7		1434.7
Level 4	PA-A-5764 (06)	1594.9		1594.9
Level 5	PA-A-5765 (06)	1632.1		1632.1
Level 6	PA-A-5766 (06)	1593.5		1593.5
Level 7	PA-A-5767 (06)	1630.7		1630.7
Level 8	PA-A-5768 (06)	1590.7		1590.7
Level 9	PA-A-5769 (06)	1627.9		1627.9
Level 10	PA-A-5770 (06)	1587.8		1587.8
Level 11	PA-A-5771 (06)	1625.1		1625.1
Level 12	PA-A-5772 (06)	1585		1585
Level 13	PA-A-5773 (06)	1322.1		1322.1
Level 14	PA-A-5774 (06)	1281.6		1281.6
TOTAL GFA		22709.1	1423.2	24132.3 m2

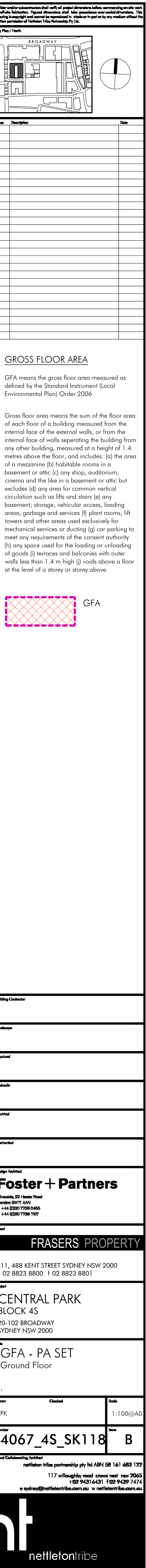
****GFA measured off DA drawings as referenced (FOSTER & PARTNERS)**

****GFA includes bay windows as per definition below**

GFA means the gross floor area measured as defined by the Standard Instrument (Local Environmental Plan) Order 2006.

Gross floor area means the sum of the floor area of each floor of a building measured from the internal face of the external walls, or from the internal face of walls separating the building from any other building, measured at a height of 1.4 metres above the floor, and includes: (a) the area of a mezzanine (b) habitable rooms in a basement or attic (c) any shop, auditorium, cinema and the like in a basement or attic but excludes (d) any area for common vertical circulation such as lifts and stairs (e) any basement; storage, vehicular access, loading areas, garbage and services (f) plant rooms, lift towers and other areas used exclusively for mechanical services or ducting (g) car parking to meet any requirements of the consent authority (h) any space used for the loading or unloading of goods (i) terraces and balconies with outer walls less than 1.4 m high (j) voids above a floor at the level of a storey or storey above.





7

6

5

4

3

2

1

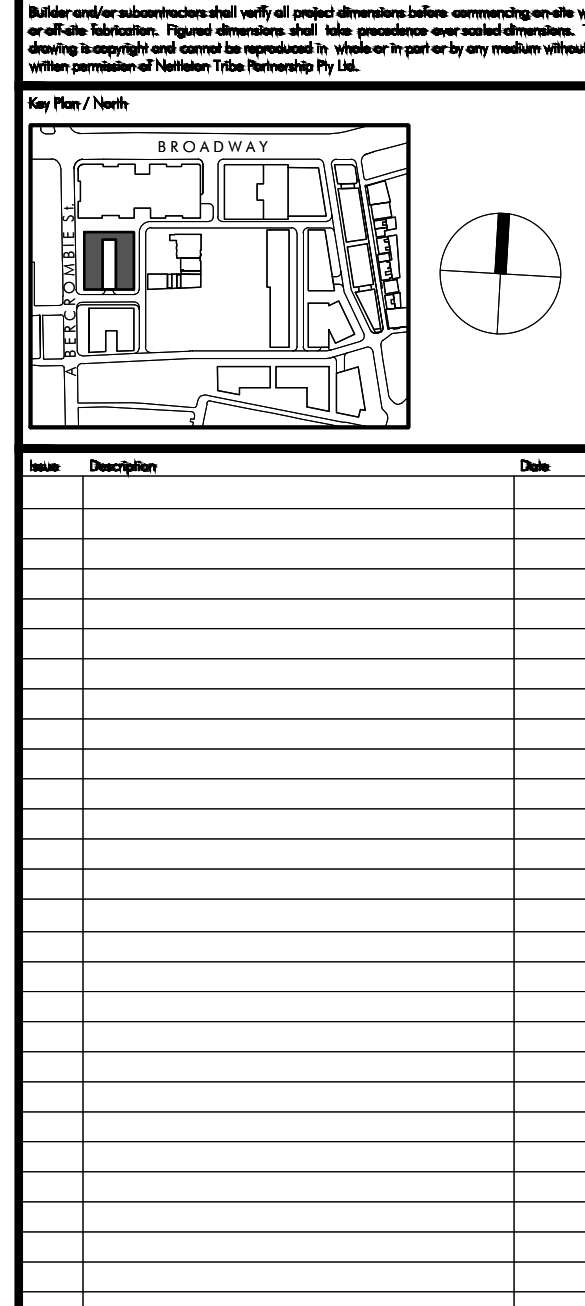
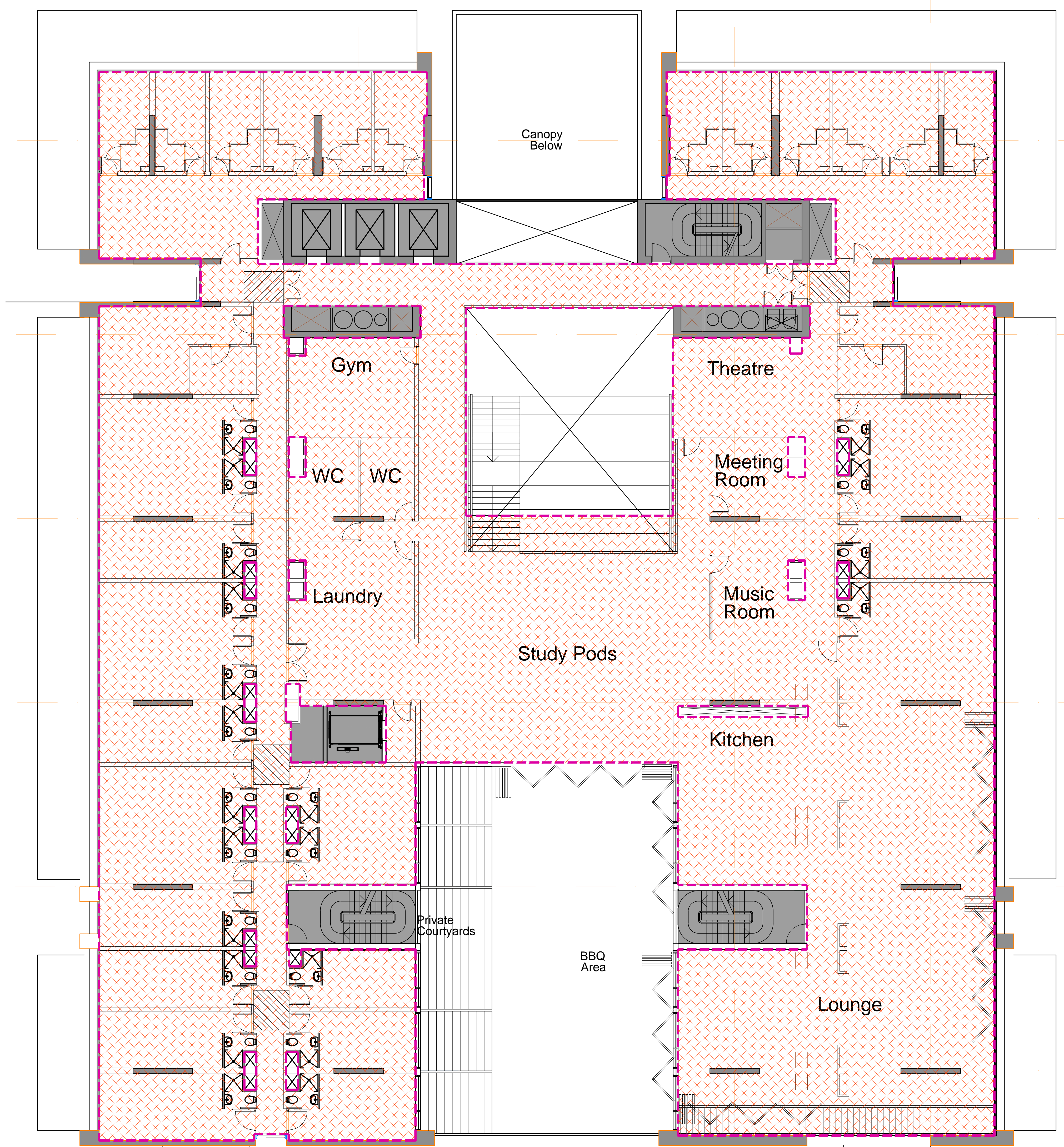
A

B

C

D

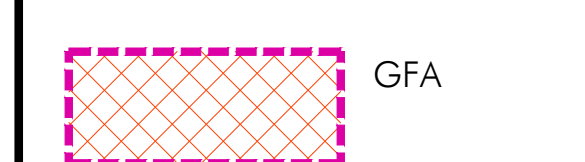
GFA: 1753.4m²



GROSS FLOOR AREA

GFA means the gross floor area measured as defined by the Standard Instrument (Local Environmental Plan) Order 2006.

Gross floor area means the sum of the floor area of each floor of a building measured from the internal face of the external walls, or from the internal face of walls separating the building from any other building, measured at a height of 1.4 metres above the floor, and includes: (a) the area of a mezzanine (b) habitable rooms in a basement or attic (c) any shop, auditorium, cinema and the like in a basement or attic but excludes (d) any area for common vertical circulation such as lifts and stairs (e) any basement, storage, vehicular access, loading areas, garbage and services (f) plant rooms, lift towers and other areas used exclusively for mechanical services or ducting (g) car parking to meet any requirements of the consent authority (h) any space used for the loading or unloading of goods (i) terraces and balconies with outer walls less than 1.4 m high (j) voids above a floor at the level of a storey or storey above.



Building Controller

Architect

Structural

Fireworks

Electrical

Mechanical

Design/Builder

Foster + Partners

Chief

FRASERS PROPERTY

111, 488 KENT STREET SYDNEY NSW 2000
T 02 8623 8800 F 02 8623 8801

CENTRAL PARK

BLOCK 4S

20-102 BROADWAY
SYDNEY NSW 2000

GFA - PA SET

Level 1 Floor

Date: Checked: Scale: 1:1000/A0

PK

4067_4S_SK119

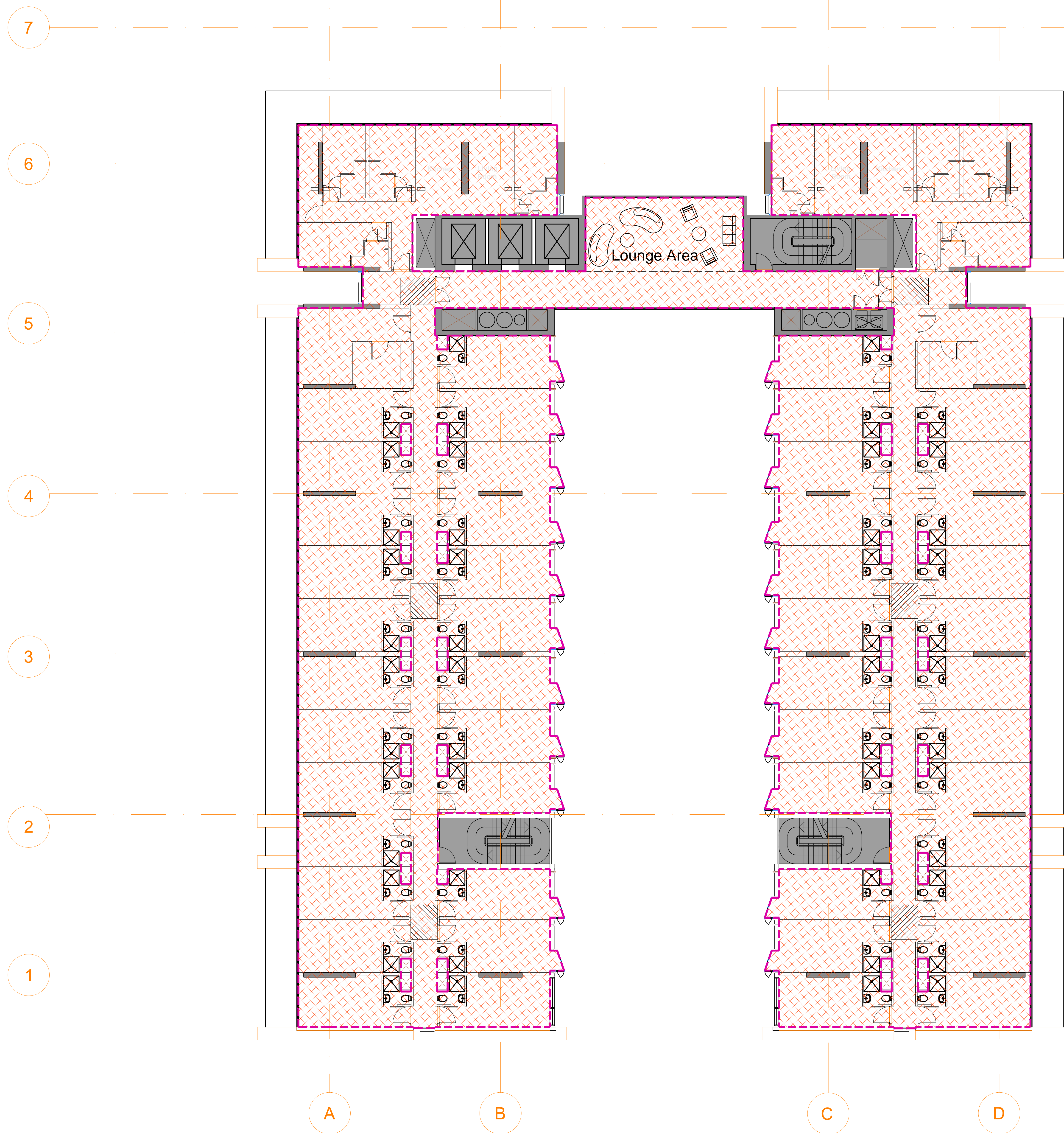
Small Consulting Architects nettleton tribe partnership Pty Ltd ABN 58 161 683 122
117 willoughby road sydney nsw 2060
162 943 631 162 943 744
e sydney@nettletontribe.com.au n nettletontribe.com.au



NOT FOR CONSTRUCTION

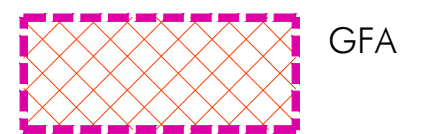


NOT FOR CONSTRUCTION

[illegible]GROSS FLOOR AREA

GFA means the gross floor area measured as defined by the Standard Instrument (Local Environmental Plan) Order 2006

Gross floor area means the sum of the floor area of each floor of a building measured from the internal face of the external wall, or from the internal face of walls separating the building from any other building, measured at a height of 1.4 metres above the floor, and includes: (a) the area of a mezzanine (b) habitable rooms in a basement or attic (c) any shop, auditorium, cinema and the like in a basement or attic but excludes (d) any area for common vertical circulation such as lifts and stairs (e) any basement, storage, vehicular access, loading areas, garbages and services (f) plant rooms, lift towers and other areas used exclusively for mechanical services or ducting (g) car parking to meet any requirements of the consent authority (h) any space used for the loading or unloading of (i) terraces and balconies with outer walls less than 1.4 m high (j) voids above a floor at the level of a storey or storey above.



	
Fraser's Property	
Unit 10/12 Broadway Sydney NSW 2000	
Unit 10/12 Broadway Sydney NSW 2000	
Unit 10/12 Broadway Sydney NSW 2000	
Unit 10/12 Broadway Sydney NSW 2000	
Unit 10/12 Broadway Sydney NSW 2000	
Unit 10/12 Broadway Sydney NSW 2000	
Unit 10/12 Broadway Sydney NSW 2000	
Unit 10/12 Broadway Sydney NSW 2000	
Unit 10/12 Broadway Sydney NSW 2000	
Unit 10/12 Broadway Sydney NSW 2000	
Unit 10/12 Broadway Sydney NSW 2000	
Unit 10/12 Broadway Sydney NSW 2000	
Unit 10/12 Broadway Sydney NSW 2000	
Unit 10/12 Broadway Sydney NSW 2000	
Unit 10/12 Broadway Sydney NSW 2000	
Unit 10/12 Broadway Sydney NSW 2000	
Unit 10/12 Broadway Sydney NSW 2000	
Unit 10/12 Broadway Sydney NSW 2000	
Unit 10/12 Broadway Sydney NSW 2000	
Unit 10/12 Broadway Sydney NSW 2000	
Unit 10/12 Broadway Sydney NSW 2000	
Unit 10/12 Broadway Sydney NSW 2000	
Unit 10/12 Broadway Sydney NSW 2000	
Unit 10/12 Broadway Sydney NSW 2000	
Unit 10/12 Broadway Sydney NSW 2000	
Unit 10/12 Broadway Sydney NSW 2000	
Unit 10/12 Broadway Sydney NSW 2000	
Unit 10/12 Broadway Sydney NSW 2000	
Unit 10/12 Broadway Sydney NSW 2000	
Unit 10/12 Broadway Sydney NSW 2000	
Unit 10/12 Broadway Sydney NSW 2000	
Unit 10/12 Broadway Sydney NSW 2000	
Unit 10/12 Broadway Sydney NSW 2000	
Unit 10/12 Broadway Sydney NSW 2000	
Unit 10/12 Broadway Sydney NSW 2000	
Unit 10/12 Broadway Sydney NSW 2000	
Unit 10/12 Broadway Sydney NSW 2000	
Unit 10/12 Broadway Sydney NSW 2000	
Unit 10/12 Broadway Sydney NSW 2000	
Unit 10/12 Broadway Sydney NSW 2000	
Unit 10/12 Broadway Sydney NSW 2000	
Unit 10/12 Broadway Sydney NSW 2000	
Unit 10/12 Broadway Sydney NSW 2000	
Unit 10/12 Broadway Sydney NSW 2000	
Unit 10/12 Broadway Sydney NSW 2000	
Unit 10/12 Broadway Sydney NSW 2000	
Unit 10/12 Broadway Sydney NSW 2000	
Unit 10/12 Broadway Sydney NSW 2000	
Unit 10/12 Broadway Sydney NSW 2000	
Unit 10/12 Broadway Sydney NSW 2000	
Unit 10/12 Broadway Sydney NSW 2000	
Unit 10/12 Broadway Sydney NSW 2000	
Unit 10/12 Broadway Sydney NSW 2000	
Unit 10/12 Broadway Sydney NSW 2000	
Unit 10/12 Broadway Sydney NSW 2000	
Unit 10/12 Broadway Sydney NSW 2000	
Unit 10/12 Broadway Sydney NSW 2000	
Unit 10/12 Broadway Sydney NSW 2000	
Unit 10/12 Broadway Sydney NSW 2000	
Unit 10/12 Broadway Sydney NSW 2000	
Unit 10/12 Broadway Sydney NSW 2000	
Unit 10/12 Broadway Sydney NSW 2000	
Unit 10/12 Broadway Sydney NSW 2000	
Unit 10/12 Broadway Sydney NSW 2000	
Unit 10/12 Broadway Sydney NSW 2000	
Unit 10/12 Broadway Sydney NSW 2000	
Unit 10/12 Broadway Sydney NSW 2000	
Unit 10/12 Broadway Sydney NSW 2000	
Unit 10/12 Broadway Sydney NSW 2000	
Unit 10/12 Broadway Sydney NSW 2000	
Unit 10/12 Broadway Sydney NSW 2000	
Unit 10/12 Broadway Sydney NSW 2000	
Unit 10/12 Broadway Sydney NSW 2000	
Unit 10/12 Broadway Sydney NSW 2000	
Unit 10/12 Broadway Sydney NSW 2000	
Unit 10/12 Broadway Sydney NSW 2000	
Unit 10/12 Broadway Sydney NSW 2000	
Unit 10/12 Broadway Sydney NSW 2000	
Unit 10/12 Broadway Sydney NSW 2000	
Unit 10/12 Broadway Sydney NSW 2000	
Unit 10/12 Broadway Sydney NSW 2000	
Unit 10/12 Broadway Sydney NSW 2000	
Unit 10/12 Broadway Sydney NSW 2000	
Unit 10/12 Broadway Sydney NSW 2000	
Unit 10/12 Broadway Sydney NSW 2000	
Unit 10/12 Broadway Sydney NSW 2000	
Unit 10/12 Broadway Sydney NSW 2000	
Unit 10/12 Broadway Sydney NSW 2000	
Unit 10/12 Broadway Sydney NSW 2000	
Unit 10/12 Broadway Sydney NSW 2000	
Unit 10/12 Broadway Sydney NSW 2000	
Unit 10/12 Broadway Sydney NSW 2000	
Unit 10/12 Broadway Sydney NSW 2000	
Unit 10/12 Broadway Sydney NSW 2000	
Unit 10/12 Broadway Sydney NSW 2000	
Unit 10/12 Broadway Sydney NSW 2000	
Unit 10/12 Broadway Sydney NSW 2000	
Unit 10/12 Broadway Sydney NSW 2000	
Unit 10/12 Broadway Sydney NSW 2000	
Unit 10/12 Broadway Sydney NSW 2000	
Unit 10/12 Broadway Sydney NSW 2000	
Unit 10/12 Broadway Sydney NSW 2000	
Unit 10/12 Broadway Sydney NSW 2000	
Unit 10/12 Broadway Sydney NSW 2000	
Unit 10/12 Broadway Sydney NSW 2000	
Unit 10/12 Broadway Sydney NSW 2000	
Unit 10/12 Broadway Sydney NSW 2000	
Unit 10/12 Broadway Sydney NSW 2000	
Unit 10/12 Broadway Sydney NSW 2000	
Unit 10/12 Broadway Sydney NSW 2000	
Unit 10/12 Broadway Sydney NSW 2000	
Unit 10/12 Broadway Sydney NSW 2000	
Unit 10/12 Broadway Sydney NSW 2000	
Unit 10/12 Broadway Sydney NSW 2000	
Unit 10/12 Broadway Sydney NSW 2000	
Unit 10/12 Broadway Sydney NSW 2000	
Unit 10/12 Broadway Sydney NSW 2000	
Unit 10/12 Broadway Sydney NSW 2000	
Unit 10/12 Broadway Sydney NSW 2000	
Unit 10/12 Broadway Sydney NSW 2000	
Unit 10/12 Broadway Sydney NSW 2000	
Unit 10/12 Broadway Sydney NSW 2000	
Unit 10/12 Broadway Sydney NSW 2000	
Unit 10/12 Broadway Sydney NSW 2000	
Unit 10/12 Broadway Sydney NSW 2000	
Unit 10/12 Broadway Sydney NSW 2000	
Unit 10/12 Broadway Sydney NSW 2000	
Unit 10/12 Broadway Sydney NSW 2000	
Unit 10/12 Broadway Sydney NSW 2000	
Unit 10/12 Broadway Sydney NSW 2000	
Unit 10/12 Broadway Sydney NSW 2000	
Unit 10/12 Broadway Sydney NSW 2000	
Unit 10/12 Broadway Sydney NSW 2000	
Unit 10/12 Broadway Sydney NSW 2000	
Unit 10/12 Broadway Sydney NSW 2000	
Unit 10/12 Broadway Sydney NSW 2000	
Unit 10/12 Broadway Sydney NSW 2000	
Unit 10/12 Broadway Sydney NSW 2000	
Unit 10/12 Broadway Sydney NSW 2000	
Unit 10/12 Broadway Sydney NSW 2000	
Unit 10/12 Broadway Sydney NSW 2000	
Unit 10/12 Broadway Sydney NSW 2000	
Unit 10/12 Broadway Sydney NSW 2000	
Unit 10/12 Broadway Sydney NSW 2000	
Unit 10/12 Broadway Sydney NSW 2000	
Unit 10/12 Broadway Sydney NSW 2000	
Unit 10/12 Broadway Sydney NSW 2000	
Unit 10/12 Broadway Sydney NSW 2000	
Unit 10/12 Broadway Sydney NSW 2000	
Unit 10/12 Broadway Sydney NSW 2000	
Unit 10/12 Broadway Sydney NSW 2000	
Unit 10/12 Broadway Sydney NSW 2000	
Unit 10/12 Broadway Sydney NSW 2000	
Unit 10/12 Broadway Sydney NSW 2000	
Unit 10/12 Broadway Sydney NSW 2000	
Unit 10/12 Broadway Sydney NSW 2000	
Unit 10/12 Broadway Sydney NSW 2000	
Unit 10/12 Broadway Sydney NSW 2000	
Unit 10/12 Broadway Sydney NSW 2000	
Unit 10/12 Broadway Sydney NSW 2000	
Unit 10/12 Broadway Sydney NSW 2000	
Unit 10/12 Broadway Sydney NSW 2000	
Unit 10/12 Broadway Sydney NSW 2000	
Unit 10/12 Broadway Sydney NSW 2000	
Unit 10/12 Broadway Sydney NSW 2000	
Unit 10/12 Broadway Sydney NSW 2000	
Unit 10/12 Broadway Sydney NSW 2000	
Unit 10/12 Broadway Sydney NSW 2000	
Unit 10/12 Broadway Sydney NSW 2000	
Unit 10/12 Broadway Sydney NSW 2000	
Unit 10/12 Broadway Sydney NSW 2000	
Unit 10/12 Broadway Sydney NSW 2000	
Unit 10/12 Broadway Sydney NSW 2000	
Unit 10/12 Broadway Sydney NSW 2000	
Unit 10/12 Broadway Sydney NSW 2000	
Unit 10/12 Broadway Sydney NSW 2000	

NOT FOR CONSTRUCTION