

Notice of Modification

Section 96(2) of the *Environmental Planning and Assessment Act 1979*

As delegate of the Minister for Planning, I modify the development consent referred to in Schedule 1, subject to the conditions in Schedule 2.



David Kitto
Executive Director
Resource Assessments & Business Systems

Sydney 15 DECEMBER 2017

SCHEDULE 1

The Development Consent for the Western Coal Services Project (SSD 5579), granted by the Planning Assessment Commission on 4 April 2014.

SCHEDULE 2

1. In the definitions in Schedule 1, delete the definition for "DPI Water" and "EIS", and insert the following in alphabetical order:

CL&W
EIS

Crown Lands & Water Division of the Department of Industry

- Environmental Impact Statement titled *Western Coal Services Project Environmental Impact Statement*, dated July 2013, and associated Response to Submissions, dated October 2013;
- Statement of Environmental Effects titled *Western Coal Services Project State Significant Development 5579 – Modification 1*, dated November 2016 and associated Response to Submissions, dated February 2017; and
- Statement of Environmental Effects titled *Western Coal Services Project State Significant Development 5579 – Modification 2*, dated August 2017 and associated Response to Submissions, dated October 2017

Mount Piper haul road

The haul road between the Angus Place Colliery pit top and the Mount Piper Power Station (shown as Existing Angus Place-Mt Piper Haul Road in Figure 1 of Appendix 2)

Overland coal conveyor

The overland conveyor system extending from the Springvale Mine pit top to the Mount Piper Power Station via the SCSS, and from SCSS to the Lidsdale Rail Siding (see Figure 1 of Appendix 2)

Wallerawang haul road

The haul road between the Angus Place Colliery pit top and the Wallerawang Power Station (shown as Existing Angus Place-Wallerawang Haul Road in Figure 1 of Appendix 2)

2. Delete all references to:
- "DPI Water", and replace with "CL&W"; and
 - "Director Environmental Sustainability" and replace with "Secretary".
3. In condition 5 of Schedule 2, delete "both" and delete "and the Director Environmental Sustainability".
4. In condition 6 of Schedule 3, delete Table 2 and insert the following table:

Table 2: Operating hours

Activity	Operating Hours
Coal transportation operations on the Wallerawang haul road	<p>Truck movements restricted to the day period only, prior to longwall extraction commencing at Angus Place Colliery.</p> <p>Maximum of 3 trucks operating during the evening period following the commencement of longwall extraction at Angus Place Colliery.</p> <p>No truck movements to occur in the night period.</p>
Coal transportation operations on the Mount Piper haul road	<p>Truck movements restricted to the day period only, prior to longwall extraction commencing at Angus Place Colliery.</p> <p>Maximum of 8 trucks operating during the evening period following the commencement of longwall extraction at Angus Place Colliery.</p> <p>Maximum of 2 trucks operating during the night period.</p> <p>No truck movements to occur in the night period during adverse meteorological conditions.</p>
Kerosene Vale Coal Stockpile operations	During the day period only
All other operational activities	24 hours a day, 7 days per week

5. In condition 7 of Schedule 3, delete the last paragraph and insert the following:

However, these criteria do not apply:

- to noise generated by the operation of the overland coal conveyor, Wallerawang haul road or Mount Piper haul road; or
- if the Applicant has an agreement with the owner/s of the relevant residence or land to generate higher noise levels, and the Applicant has advised the Department in writing of the terms of this agreement.

6. After condition 8 of Schedule 3, insert the following:

Noise Reduction Study

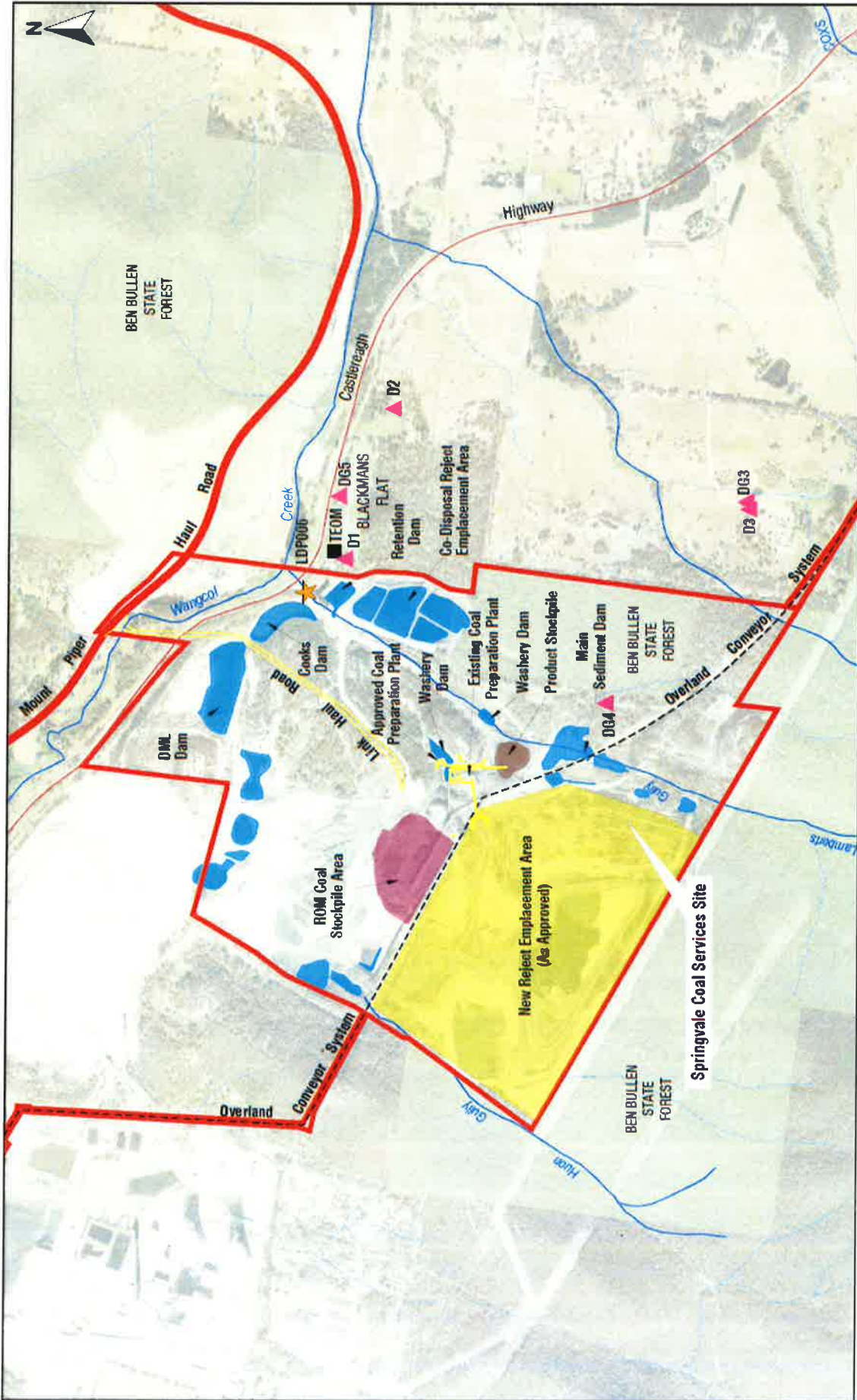
- 8A. The Applicant shall prepare and implement a Noise Reduction Study for the overland coal conveyor and SCSS to the satisfaction of the Secretary. The study must:
- be prepared in consultation with the EPA, and submitted to the Secretary for approval by the end of February 2018, unless otherwise agreed by the Secretary;
 - identify sensitive receptors and existing noise levels in the vicinity of the overland coal conveyor and SCSS;
 - investigate and propose reasonable and feasible measures to mitigate noise associated with the overland coal conveyor and SCSS, including but not necessarily limited to:
 - low noise idlers, barriers or other measures on sections of the conveyor system; and
 - cladding, attenuated plant or other measures at the CHPP;
 - predict changes in noise levels in the vicinity of the overland coal conveyor and SCSS associated with the proposed noise mitigation measures; and
 - provide a maintenance schedule for the overland coal conveyor to be implemented in the Noise Management Plan (see condition 9 below).

7. In condition 9 of Schedule 3, after "any noise incidents", insert the following:

- detail a maintenance schedule for the overland coal conveyor.

8. In Appendix 3 Development Layout, delete Figure 1 and insert the figure on the following page:

9. In Appendix 8, in Section 10.1, delete "and DPI".



LEGEND:

- Project Application Area
- Major Roads
- Watercourse
- Overland Conveyor System
- State Forest
- Coal Stockpile Area
- New Reject Employment Area (as approved)
- Water Management Structures
- New Infrastructure
- Licensed Discharge Point
- Duct Deposition Gauge
- TEOM

Figure 10
Springvale Coal Services
Site Infrastructure

0 300 600 1200 M

Prepared by: **SLR**

Centennial Coal
Western Coal Services

DATE	01.09.2017	SEAM	LITHGOW
REFERENCE	SLR WCS MOD 2,600,12121_FIG10, SCS SITE INFRA_V4.dwg	SCALE	1:17500
<p>CENTENNIAL SPRINGVALE PTY. LTD.</p> <p>THIS DRAWING IS COPYRIGHT NO PART OF IT IN ANY FORM OR BY ANY MEANS (ELECTRONIC, MECHANICAL, MICRO-COPYING, PHOTOCOPYING OR OTHERWISE) BE REPRODUCED, STORED IN A RETRIEVAL SYSTEM OR TRANSMITTED WITHOUT PRIOR WRITTEN PERMISSION.</p>			