

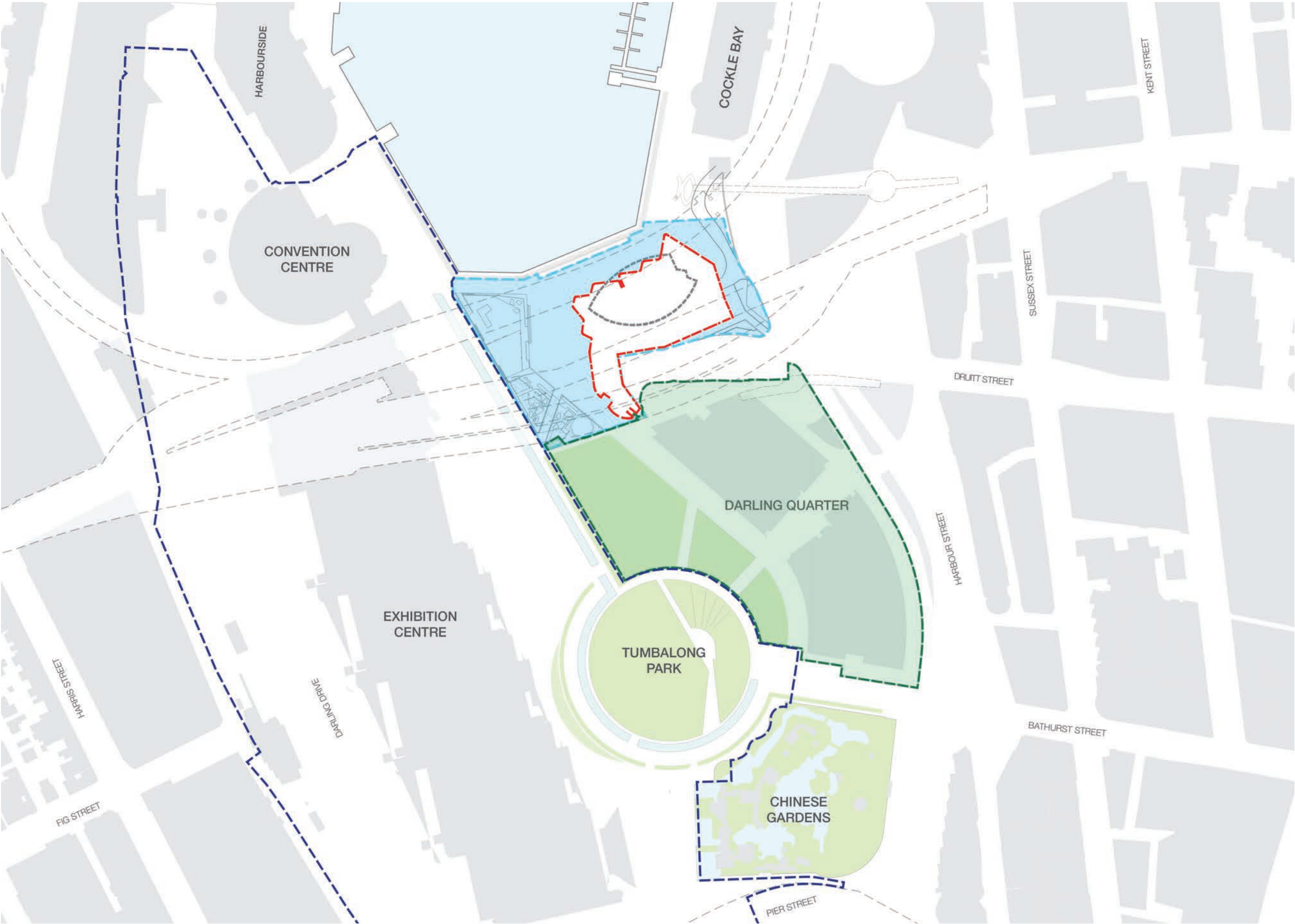
# 31 Wheat Rd

Sydney

## Drawing List - LANDSCAPE

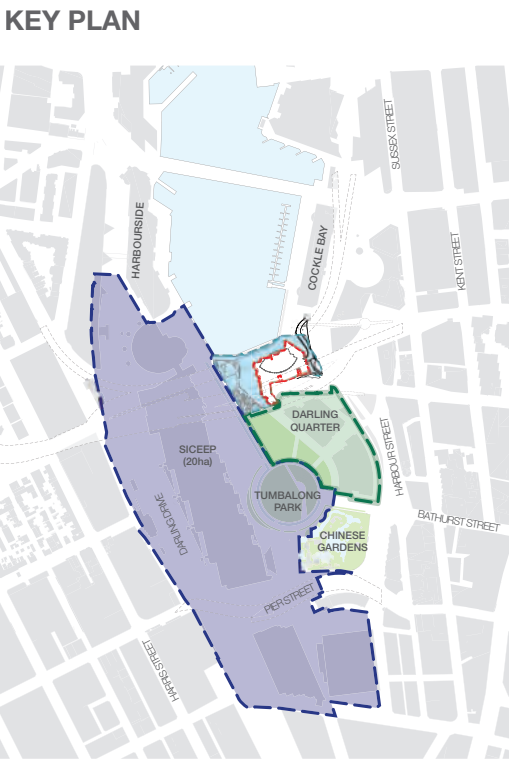
12023-LDA01	Public Domain Context Plan
12023-LDA02	Public Domain Plan
12023-LDA03	Public Domain Sections
12023-LDA04	Detail Playground Plan
12023-LDA05	Detail Eastern Public Domain Plan and Section
12023-LDA06	Public Domain Planting Plan

Date: 07.08.2013 [Rev C]



**LEGEND**

- PROPOSED LEASE LINE
- SICEEP BOUNDARY
- DARLING QUARTER (approx 28,200m<sup>2</sup>)
- IMAX THEATRE FOOTPRINT
- ZONE OF INFLUENCE (approx 10,000m<sup>2</sup>)

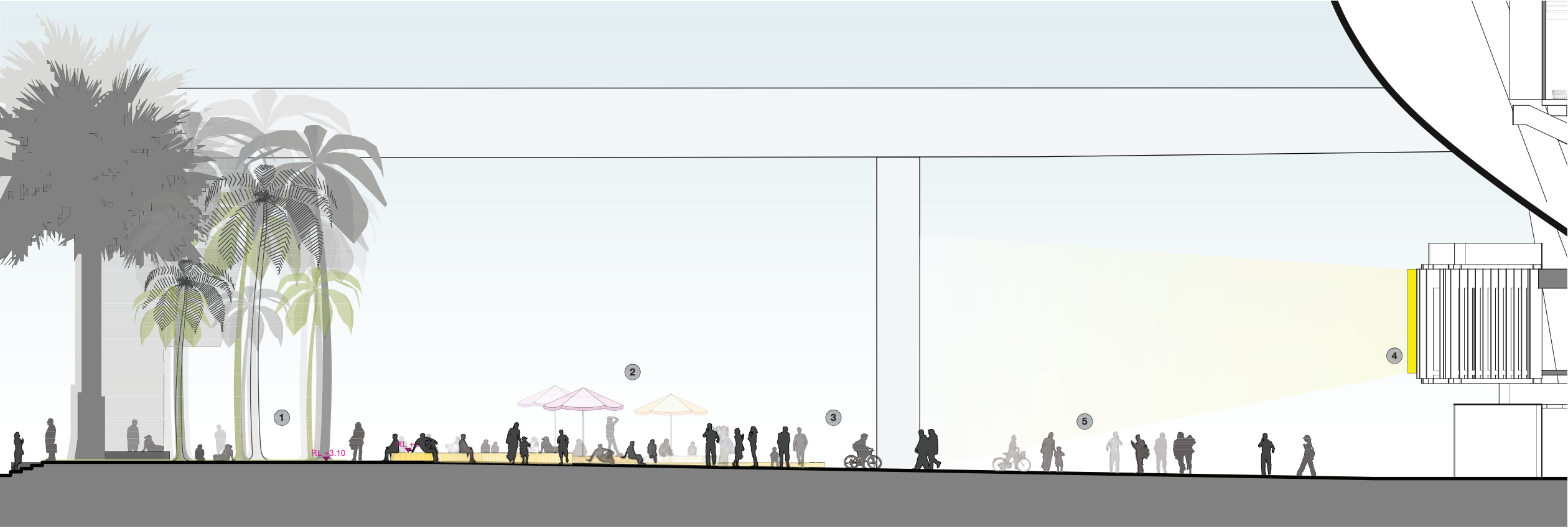








Section A | Western Public Domain



Key

- 1. Relocated Palm Grove and turf
- 2. Umbrellas and timber decking
- 3. Seating edges
- 4. City screen
- 5. Large event space



Seating Lawn, Darling Quarter, Sydney

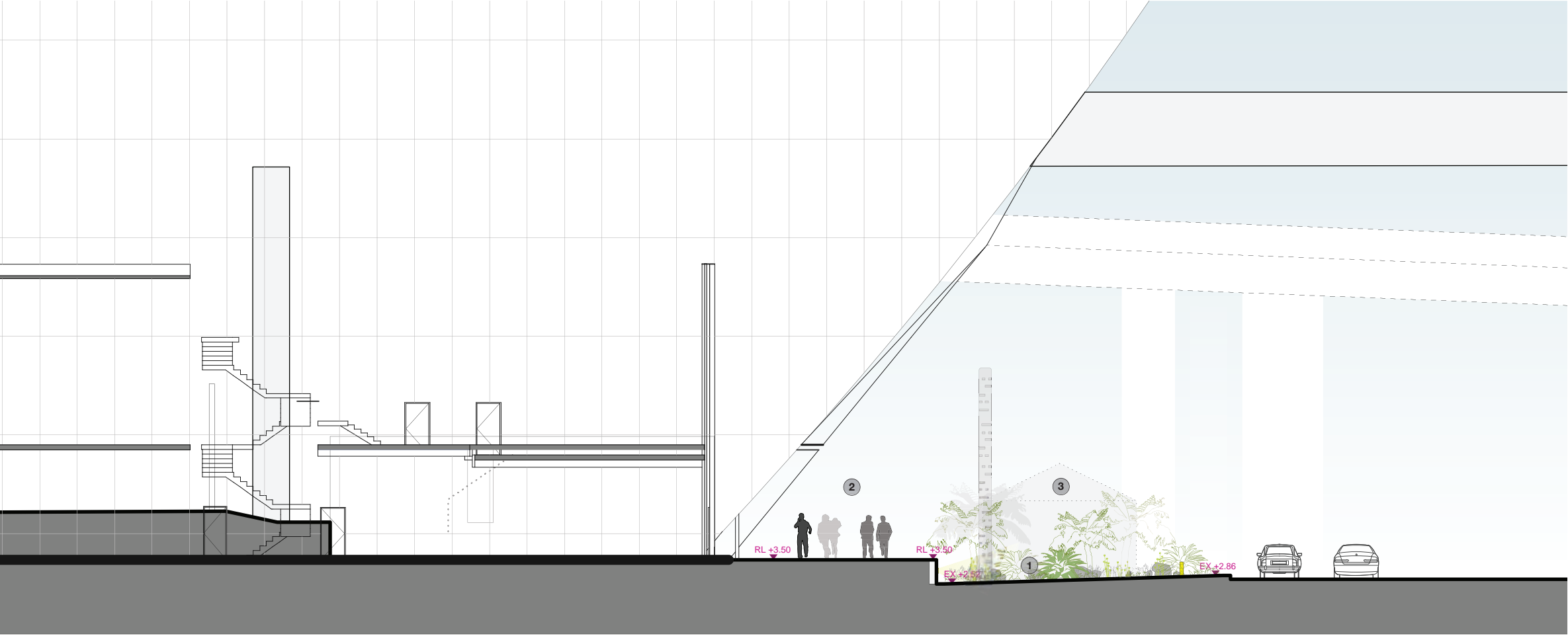


City screen, Federation Square, Melbourne



Evening event on the lawn, Miami Beach Soundscape, Miami, USA

Section B | Harbour Street/ Wheat Road and Eastern Public Domain



Key

- 1. Urban rainforest
- 2. Pedestrian walk (with pedestrian lighting)
- 3. Possible interpretation to heritage substation



Under freeway art installation, Ultimo



Rainforest garden, Capita Centre, Sydney

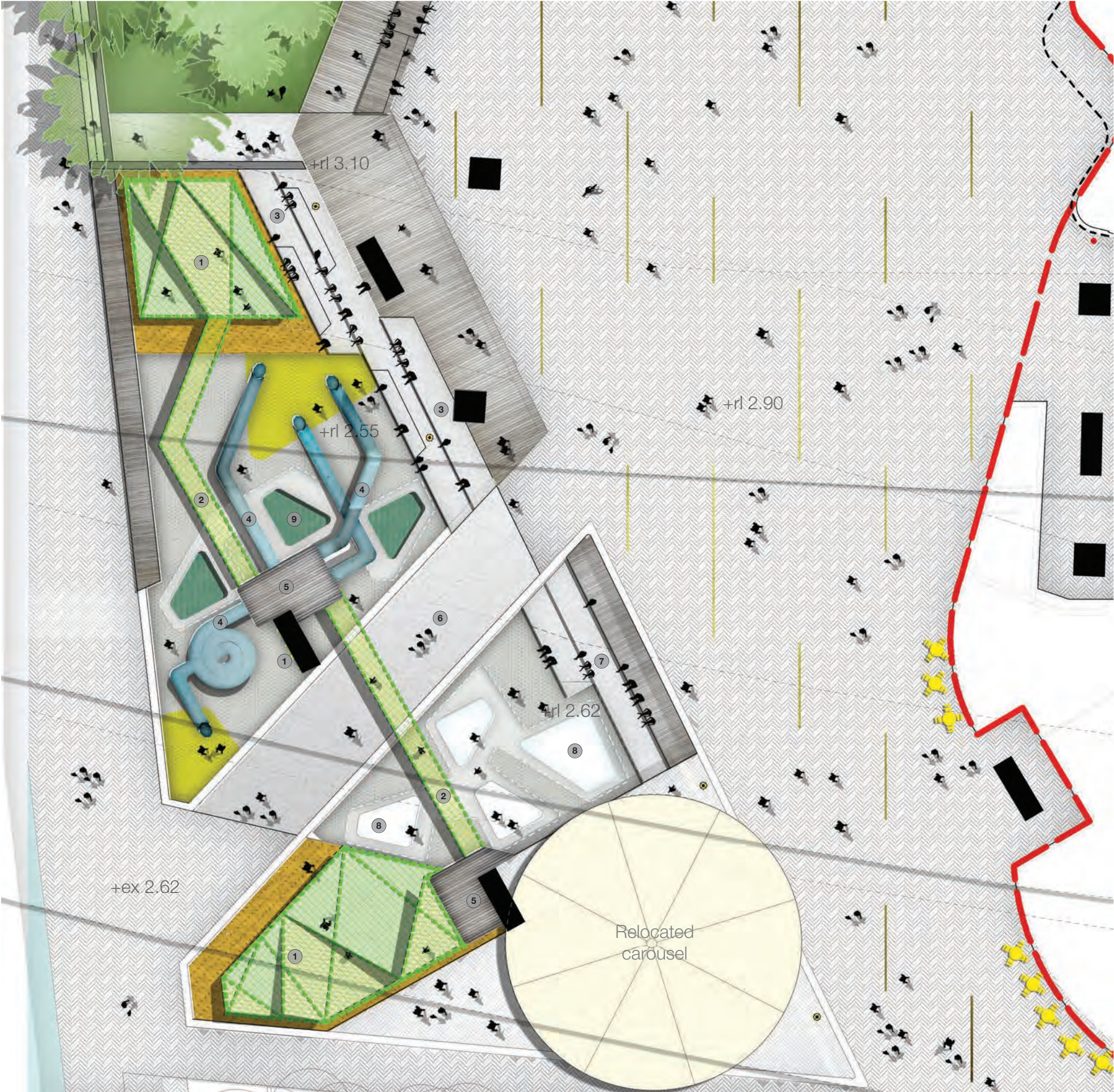


Heritage interpretation, Glebe

12023 - 31 Wheat Road | Darling Harbour, Sydney

Public Domain Sections





Key

- 1. Getting Up/ Climbing**

  - Giant nets
  - Climbing walls
- 2. Moving Through**

  - Moving from lookout platforms via high level net passages and rope tunnels
- 3. North Seating Edge**

  - Terraced down to playground level.
- 4. Slide-Scape**

  - Giant slides
  - Twisted forms
- 5. Lookouts**

  - Accessed by climbing up giant nets and climbing walls
  - Possible use of freeway pylons for support
- 6. Through Link**

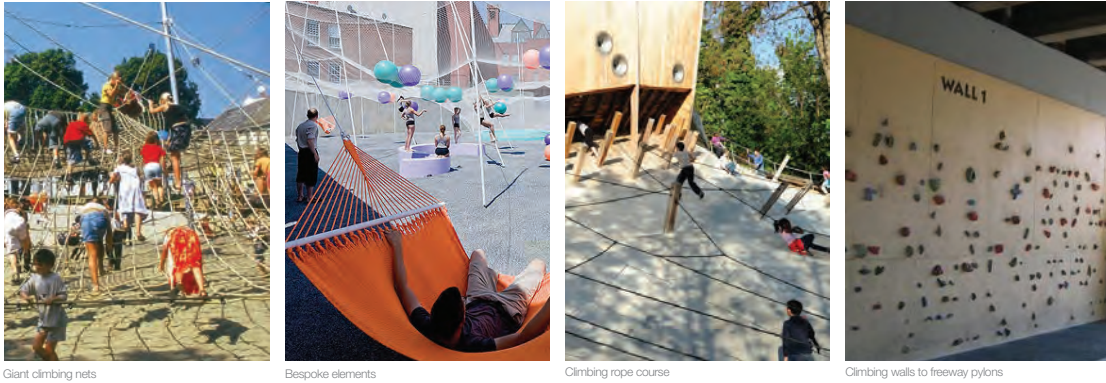
  - On grade west-east connection
- 7. South Seating Edge**

  - Terraced down to playground level
  - Sculpted to provide for parkour
- 8. Sculptural Land Form**

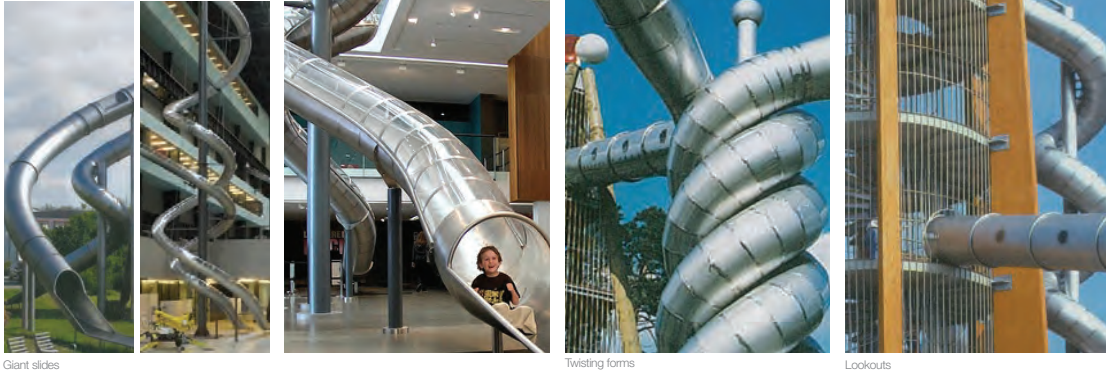
  - 3d concrete terrain
- 9 In Ground Trampolines**

  - Flush with concrete terrain

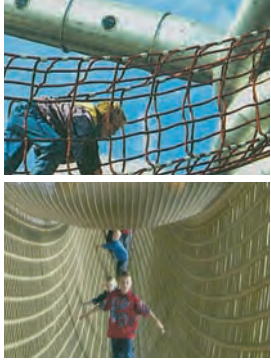
Getting up/ Climbing



Slide-scape



Moving through



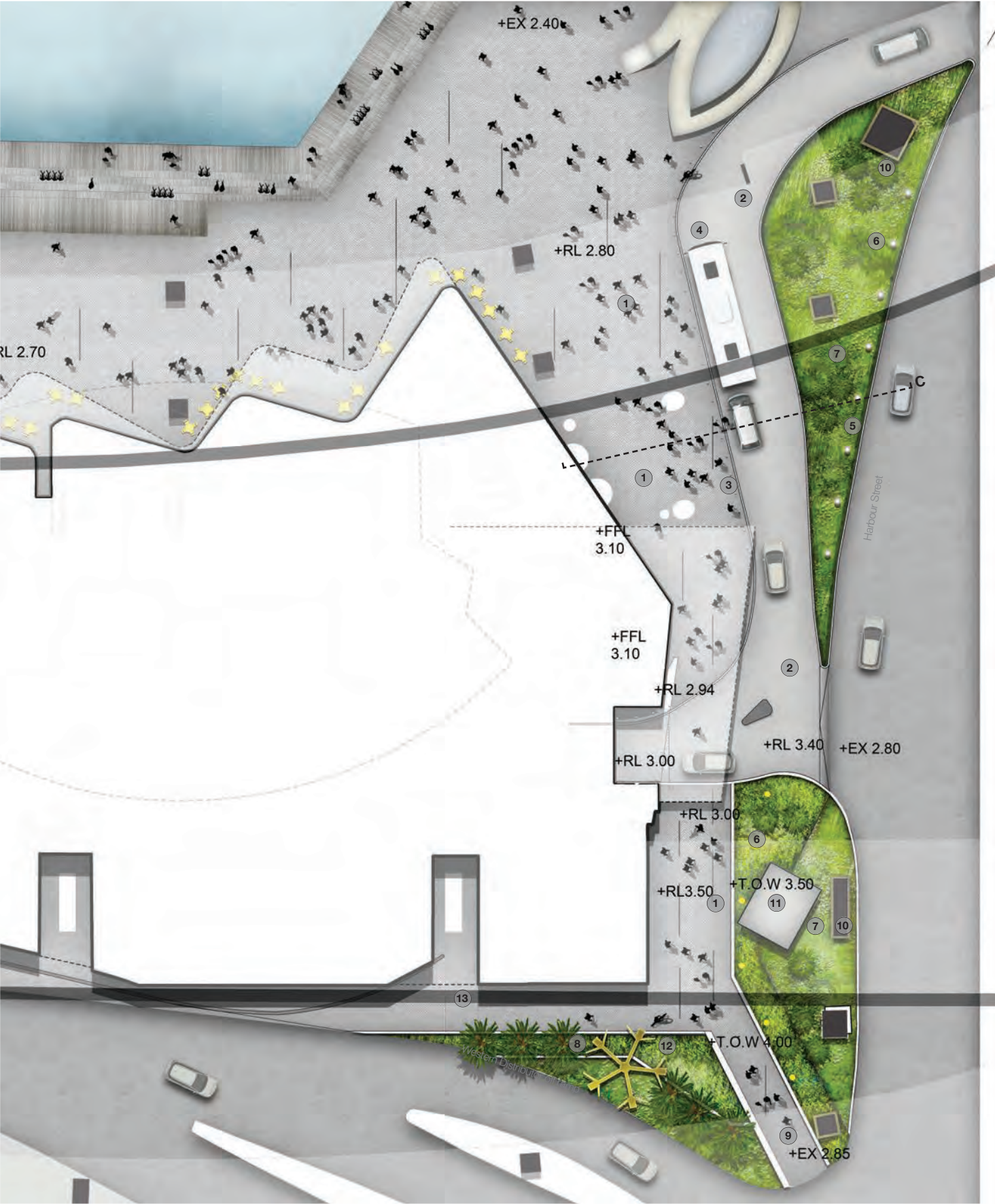
Playful forms



Sculptural land forms

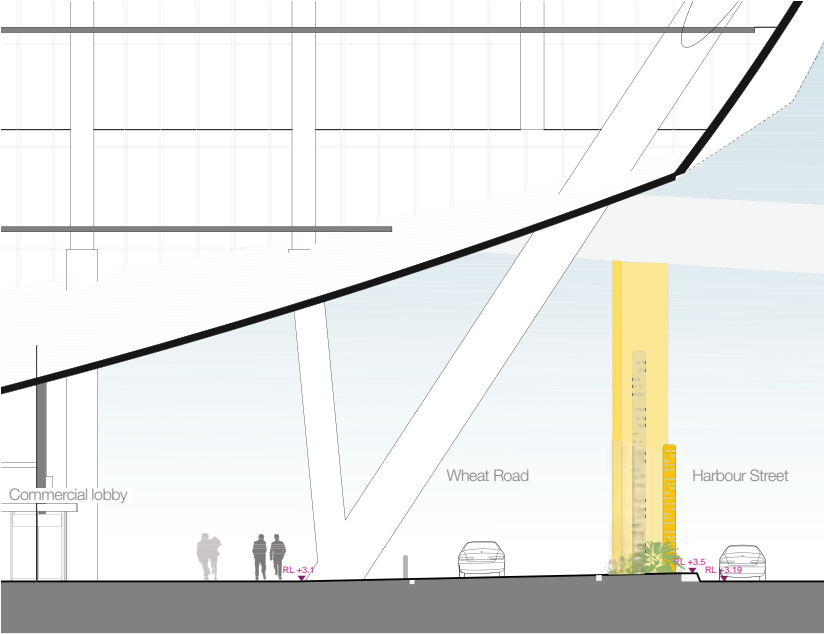






Key

- 1. Paving finish 1 - pedestrian areas
- 2. Paving finish 2 - carriageway
- 3. Bollards
- 4. Drop off lane
- 5. Median with new flood barrier wall along Harbour St (TOW 3.50)
- 6. Repetitious upright elements - possible public art installation, lighting, flag poles
- 7. Low rainforest planting - allowing views through
- 8. Rainforest planting - including taller palm species
- 9. Pedestrian light walk - sculptural upright elements drawing pedestrians into the site. Angled walls/ edges. Paving high point at RL3.50 provides flood barrier
- 10. Cladding to freeway pylons
- 11. Possible interpretation to heritage substation
- 12. Relocated sculpture
- 13. Access for cable vault (existing infrastructure)



Precedent images

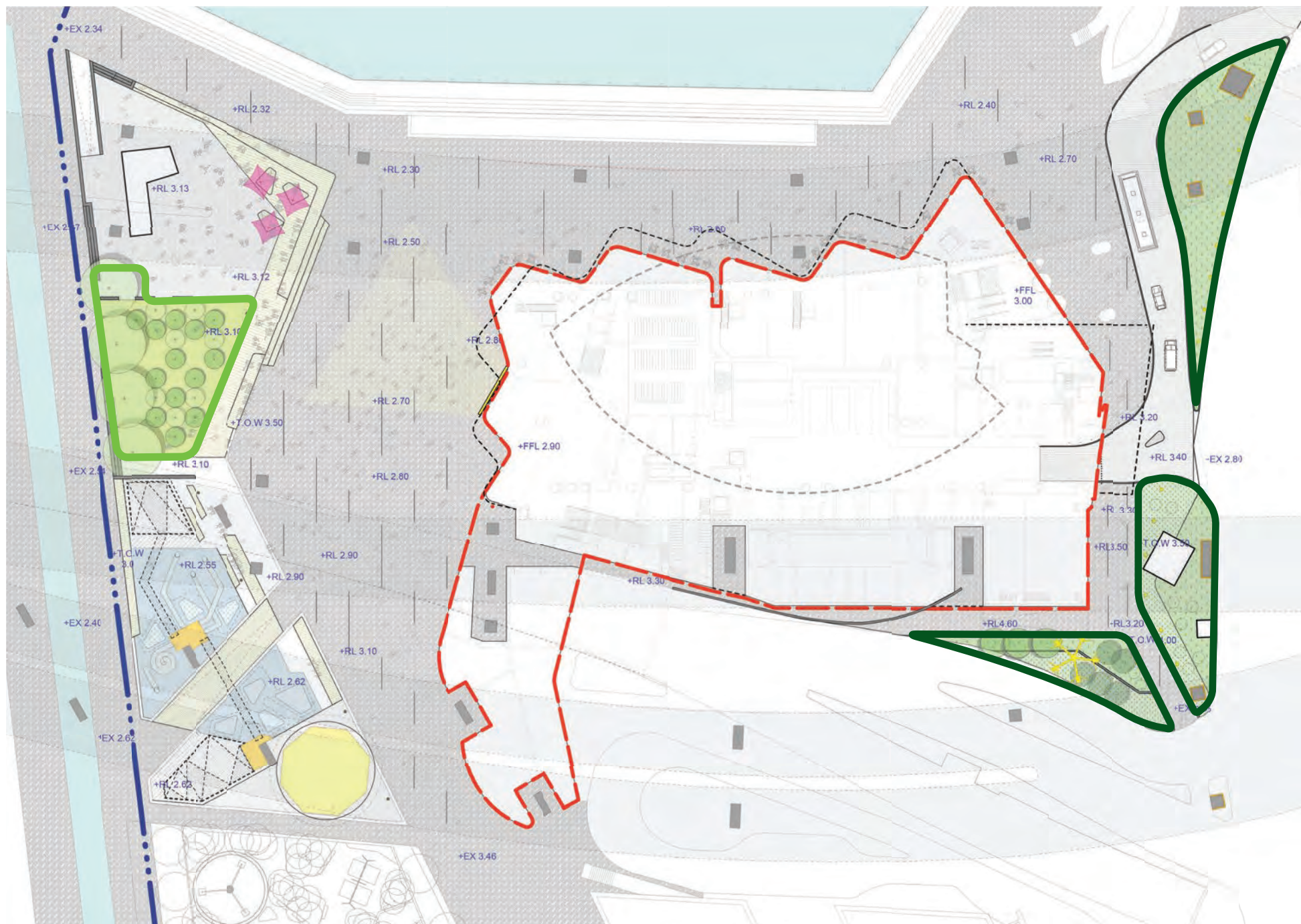


Underpass Opportunities





## Public Domain Planting Plan



## Planting Schedules

**Lawn and (relocated) Palm Grove**

Botanic Name	Common Name	Pot Size
<b>Trees</b>		
<i>Livistona australis</i>	Cabbage Tree Palm	Existing on site to be relocated
<i>Phoenix canariensis</i>	Phoenix Palm	Existing on site to be retained
<i>Howea forsteriana</i>	Kentia Palm	Forest salvaged, 6-12m
<b>Turf</b>		
<i>Stenotaphrum secundatum</i> 'King's Pride'	'King's Pride' Soft Leaf Buffalo	

 Rainforest Entry Gardens

Botanic Name	Common Name	Pot Size
<b>Trees and Ferns</b>		
<i>Livistona australis</i>	Cabbage Tree Palm	Existing on site to be relocated
<i>Cyathea cooperi</i>	Coin Spot Tree Fern	2m high
<i>Dicksonia antarctica</i>	Soft Tree Fern	2m high
<i>Asplenium australasicum</i>	Birds Nest Fern	300mm
<i>Blechnum cartilagenum</i>	Gristle Fern	200mm
<i>Microsorium punctatum</i>	Fishtail Strap Fern	200mm
<b>Groundcovers / Flowering Plants</b>		
<i>Aspidistra eliator</i>	Cast Iron Plant	200mm
<i>Clivea miniata</i>	Clivea	200mm
<i>Liriope muscari</i> 'Evergreen Giant'	'Evergreen Giant' Lily Turf	200mm
<i>Philodendron</i> 'Xanadu'	'Xanadu' Philodendron	200mm
<i>Ajuga reptans</i> 'Giant Catlins'	Giant Catlins' Ajuga	150mm
<i>Anthropodium cirrhatum</i>	Renga Renga Lily	150mm
<i>Cycas revoluta</i>	Cycad	100L
<i>Ophiopogon japonica</i>	Mondo Grass	150mm
<i>Pachysandra terminalis</i>	Japanese Spurge	150mm
<i>Sanserveria trifasciata</i>	Monther In Law's Tongue	200mm
<i>Viola hederacea</i>	Native Violet	150mm

### West. Lawn and Palm Grove



Existing Cabbage Palms (49) to be relocated within the site	Existing Phoenix palms to be retained along the western edge	Seating lawn, Darling Quarter, Sydney
-------------------------------------------------------------	--------------------------------------------------------------	---------------------------------------

### East. Harbour St and Wheat Rd pedestrian link and median rainforest planting



<i>Microsorium punctatum</i>	<i>Cyathea cooperi</i>	Rainforest garden, Capita Centre, Sydney	<i>Blechnum cartilagenum</i>	<i>Dicksonia antarctica</i> and <i>Cycas revoluta</i>	Low mass planting, Darling Quarter
------------------------------	------------------------	------------------------------------------	------------------------------	-------------------------------------------------------	------------------------------------

**12023 - 31 Wheat Road** | Darling Harbour, Sydney