

APPENDIX C

Landscape Masterplan



Executive Summary

This issue of the Landscape Schematic Design Report focuses on clarifying the preliminary landscape design principles and design language employed and incorporates comments from the previous draft schematic design report. The report illustrates how key principles and strategy will relate to new landscape spaces within the Kempsey District Hospital campus and its vision for the future.

- The key strategies/ aspirations include:

- Retention of existing rural landscape character and trees.
- A fluidly integrated way finding strategy and landscape design that embodies the local vernacular.
- Introduction of Aboriginal bush tucker and medicinal planting significant to local communities.
- Creating unified social and passive places that harness the power of healing and enrich the life of those who encounter it.

These key strategies and aspirations principles align with the earlier masterplan report, and endeavour to strengthen the decisions already made through consultation by the project team.

Each key landscape space is defined and drawn with direct relationship to the functional brief and a connection to the sites relationship with an existing landscape character, rural location and connection to people. This has been crucial in determining and conceptualising the overall landscape strategy. The river, its banks and the landscapes natural processes or flows all had a substantial impact on the initial design thinking.

Further analysis and implementation of key landscape strategies within the proposed landscape spaces is required to create a specific focus on gaining outdoor access for patients as a form of treatment. This enabling process will engage patients with the landscape design and clarify design thinking in many areas. The report highlights the landscape as a key component in the restorative health and welfare of individual patients and the design should embody the qualities of the surrounding environment.

Design Statement

The Kempsey District Hospital (KDH) site offers a series of distinct opportunities and constraints for the landscape planning and design. The proposed redevelopment is situated within active existing hospital facilities, making it vital to consider the ongoing future uses of the hospital and its patients. Therein the proposed landscape aims to respond to the key objectives of the masterplan proposal, reflect the local character and site surrounds with appropriate consideration to existing/ proposed facilities, and visual aspect especially where it can be attributed to the holistic care and consideration of patients and staff.

The landscape design hinges on creating a legible and inviting place of local character which is unified by the use of aboriginal bush tucker planting and interpretive symbolism. The new and old hospital buildings shall focus on a “green heart”, central to all future masterplanning decisions and for this reason it will grow to become a verdant oasis activated by regular uses yet tranquil to those who are in need of respite.

The organisation of the landscape will complement the building, accentuating the sense of arrival, settling the building mass, and maximizing garden vistas through the core of the building and from many moments within its interior. The entry forecourt will be a cool, calm and simple space that breaks the scale of the building through well considered tree planting and screening shrubs. It will offer a place to rest at the entry and provide distinct separation between the building and carpark, augmenting the building entry. It will maximise the use of available space available, yet retain flexibility for possible future expansion, and provide opportunities for connections to the central courtyard beyond.

Within the building envelope, and beyond the ground floor lobby a central healing garden will be created. The courtyard gardens use the surrounding buildings scale, curtilage and obvious desire lines to create hopeful places well positioned to receive sunlight throughout the year, ensuring it will remain the green heart of the hospital well into the future.



The existing site is surrounded by an established and diverse landscape - a key generator in forming landscape moves

Design Brief

- At the start of the Schematic Design process the landscape brief was originally focused on a broader site scale, which incorporated larger areas of the hospital, in particular the arrival, pedestrian entry and carpark to the northern edge of the hospital along Polwood Street. These preliminary ideas were presented to the Architect and aligned well with the overall masterplan vision. As the front of house, ambulance entry points and site levels and pedestrian access needed further resolution before a strong landscape concept could be established, it was agreed with the Architect that a more specific landscape brief would be determined once these issues had more clarity. Therefore the landscape design process developed in respect to those restraints. Should future planning stages allow for a greater landscape budget, it is envisaged that the main entry and carpark could be enhanced and softened by the planting of trees and rain gardens that would capture runoff from impervious carpark surfaces. Entries to various buildings could be made more welcoming with soft edges and places to sit in the shade.

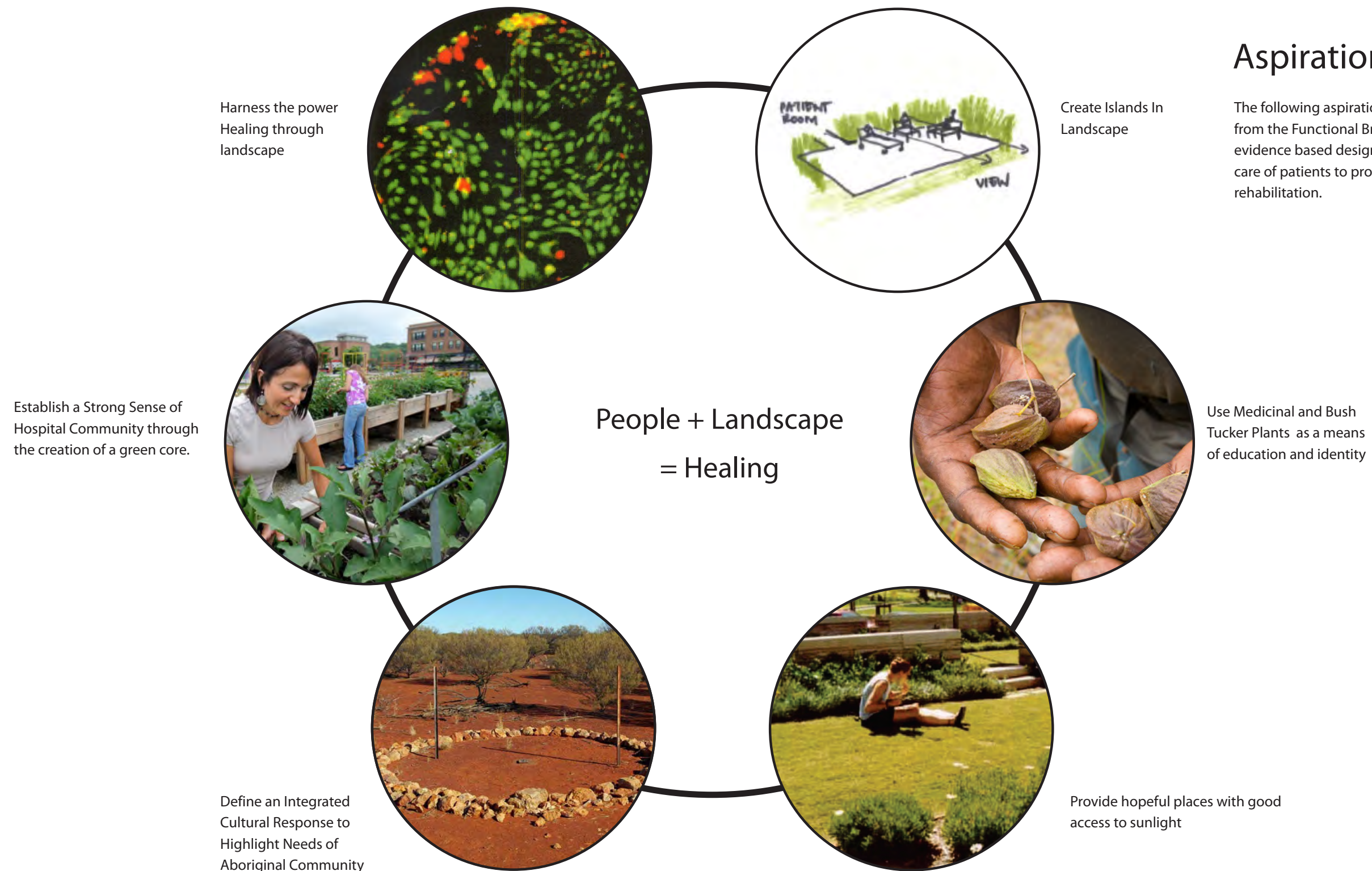
However a reduction in landscape scope and a decision to reduce capital costs across the project meant that the landscape scope now focus on three key areas.

- Main Entry Forecourt and Patient Arrival
- Central Healing Garden
- Rooftop Landscape to Patient Bedrooms

These key landscape spaces aim to respond to the hospitals current and future needs and engage with the key outcomes of the functional brief. Each landscape space will highlight the positive existing landscape character that surrounds the hospital and continue to build upon the existing local setting. The design will be carefully considered to create a range of different sequences and emotions that define and support the variety of important landscape spaces allowed for in the brief.

Aspirational Principles

The following aspirational principles have been derived from the Functional Brief, previous design reports and evidence based design criteria that focuses on the holistic care of patients to provide welcome places for respite and rehabilitation.



Landscape Strategy

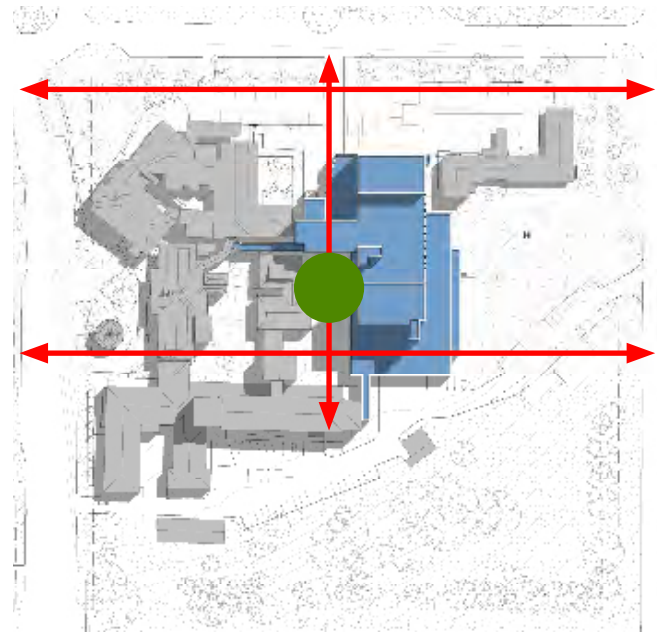
EXISTING LANDSCAPE

- The landscape design will highlight the positive existing landscape character that surrounds the hospital site and continue to build upon the existing rural setting .
- Many established trees are of great value to the hospital and surrounding local streets. The landscape aims to reinforce and use the rich species palette already present on site to ensure a harmonious balance between new and old.
- It will be carefully considered to create a range of different sequences that define and support the variety of important landscape spaces provided.
- The use of aboriginal symbolism and bush tucker plants will be incorporated into the hospital landscape to provide a holistic representation of the indigenous and non indigenous communities of the local area and wider region.



Excellent mature trees and landscape character typical of the local region.

Landscape Strategy



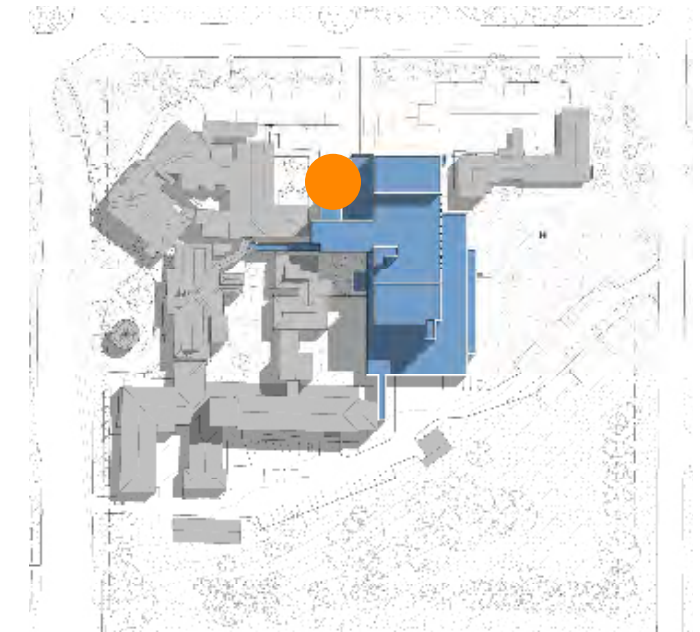
LANDSCAPE SPINES

- Strengthen the importance of existing mature tree plantings and landscape curtilage to the current and proposed hospital buildings.
- Existing landscape spines will provide a strong and central hierarchy, highlighting current and future entry points and offering places of passive recreation outside the main hospital grounds, especially the 'green core' of the hospital.
- Furthermore the use of an integrated/interpretive way finding strategy could promote the local and cultural significance of the Hospital to local visitors and the wider community.
- Develop structured landscape spines to align with possible future development zones and facilities and to reinforce pedestrian links within the existing campus
- Align spines with a culturally appropriate meeting place and or bush tucker garden that provides easy access to the local aboriginal community and a place to reflect with ill relatives.



ENTRY SEQUENCE

- Announce the main hospital entries through a sequential and meaningful landscape experience that is inviting, accessible and inclusive.
- Use a repetition of design language that is carried through the site materially, complementing the architecture, local vernacular and reinforcing safe vehicular pedestrian and circulation.
- Enhance and integrate the vehicular and pedestrian entries into the landscape, with the use of soft planting zones that provide structure and places for informal passive respite.
- Enhance the entry experience by using landscape form, planting and discreet but legible signage to help orient visitors and staff alike to various areas of the hospital campus.
- Provide strong visual cues through the use of symbolic landscape gestures and significant tree plantings.

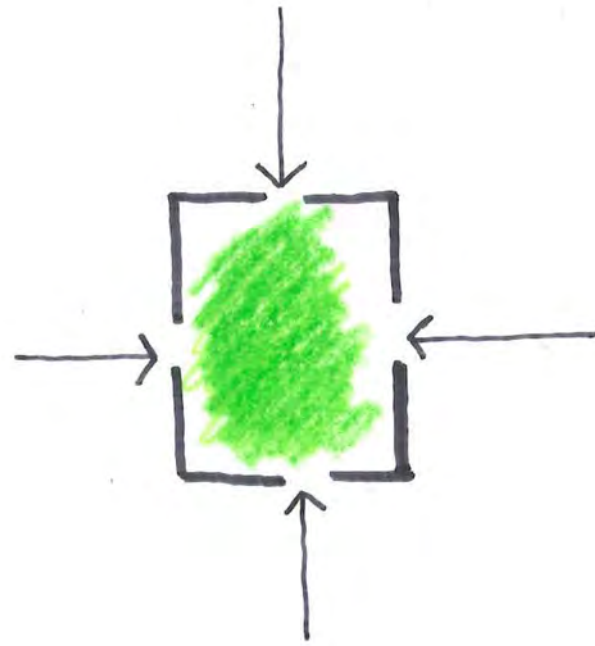


OPEN DOOR

- Create a comfortable, clean and calm entry courtyard and front door to the main entry that is a significant meeting place for patients and visitors.
- Provide clear views to the landscape beyond, which will be a significant visual cue from various areas within the new hospital
- Connect and strengthen landscape spaces on the ground level to the various hospital departments.
- Utilise planting and landscape gestures to rationalise desired movement and create small garden pockets or islands for passive respite.
- Improve or modify site topography to enable frequent and inclusive access to gardens by patients, staff and visitors.
- Build places of respite and healing that will become memorable and enliven an integrated sense of community within the hospital.

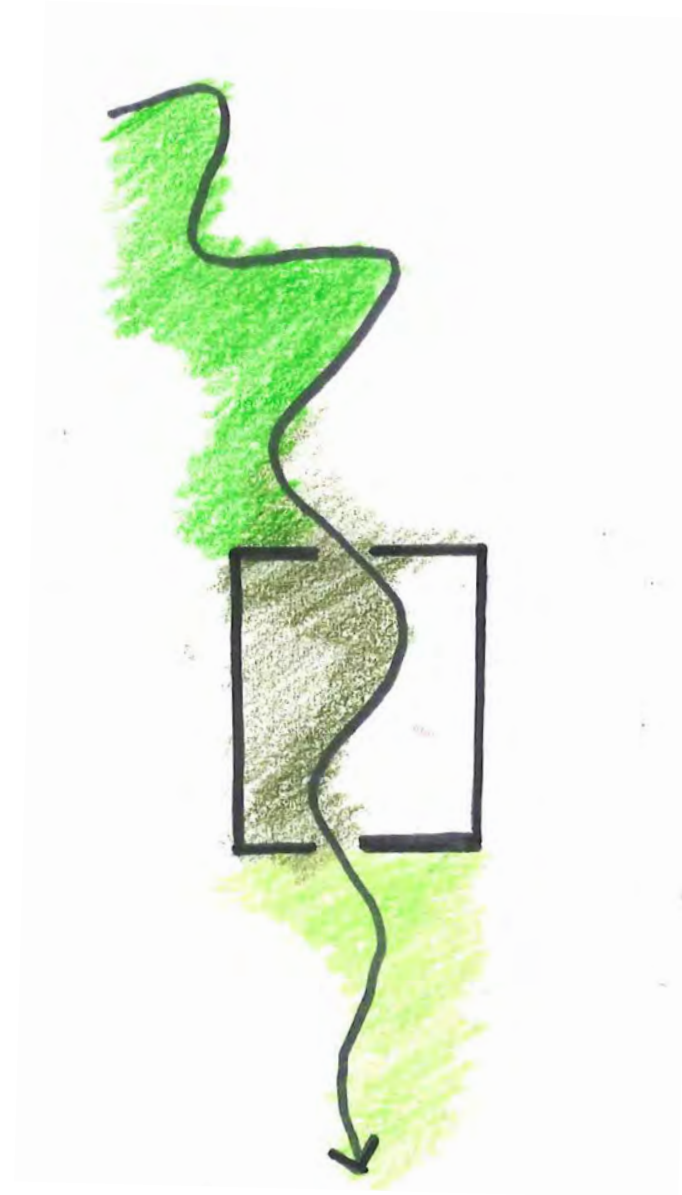
Concept Diagrams

The following concept diagrams have been developed in response to masterplan, development of the functional brief and aspirational principles. These two diagrams define the approach and are central to all decisions made in considering the landscape design.



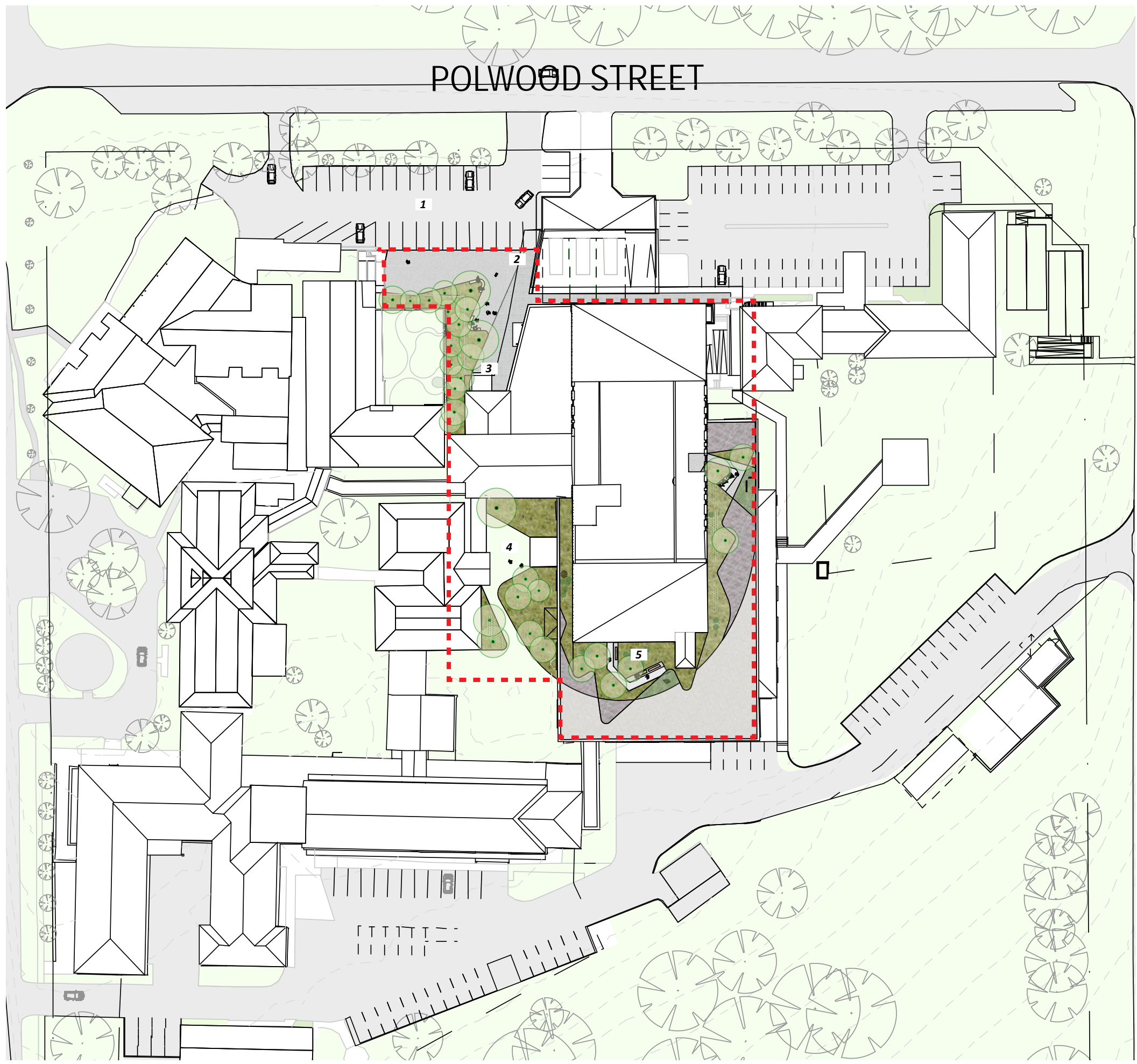
CREATING A GREEN HEART

- Central to the masterplanning for the building is the creation a "green heart". The heart will be central to the old and new buildings and a place for people to meet and relax.




A FLUID LANDSCAPE

- The design should respond to the previous diagrams and become fluid expression of landscape, wayfinding and cultural interpretation. The design shall entice visitors at the main entry, flow seamlessly into the lobby and spill out into the central garden. The fluid movement shall be repeated throughout the landscape design, morphing to provide small garden spaces seating and open areas to wander.



Landscape Masterplan

- Legend
- 1. revised carpark and entry from polwood street
 - 2. public drop off zone and covered walkway
 - 3. main public entry
 - 4. central healing garden
 - 5. patient rooftop garden

 - Extent of landscape works/scope

Landscape Precincts

Main Entry

The main entry is defined and celebrated by one strong fluid desire line. The line forms the edge of a generous and welcoming garden which bends to form comfortable seating under the shade of symbolic shade trees, which visitors and patients alike will be able to enjoy. This will be an important welcoming/meeting place and formally defines the hospital entry, providing a visual cue from the adjoining carparks and formal drop off areas. The desire line continues and works its way into the building and beyond as an interpretive wayfinding gesture. It is juxtaposed by a rigid yet playful paving pattern which is reflected in the colonnade above and carries though into the central lobby space where the pattern intensifies, creating subtle drama within the arrival space. The drama of the main entry flows through to the central garden beyond the lobby, connecting the two spaces at once and therefore encouraging people to move out onto the gardens open lawn and congregate in the comfortable seating spaces.

Legend

1. paved entry from carpark drop off area.
2. seating arranged in a fluid pattern under shade trees
3. paving lines are broken by desire line to lobby
4. screen planting and trees planted to edge
5. paving flows into lobby to connect interior
6. desire line continues into lobby as wayfinding device





The main entry forecourt will be defined by symbolic tree planting and an obvious yet inviting entry path clearly indicating the main entry

Landscape Precincts

Central Healing Garden

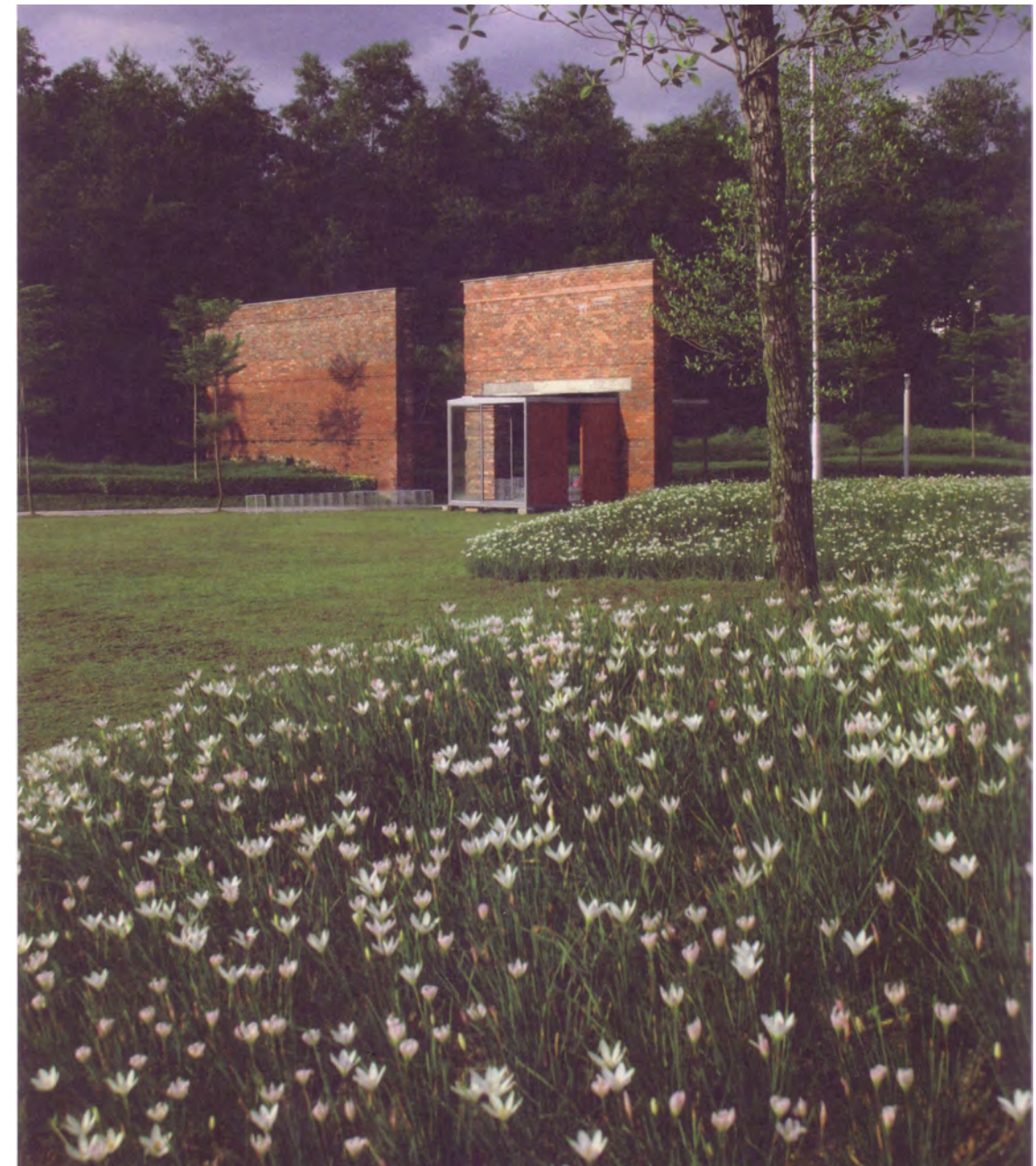
The Central Healing Garden is the primary outdoor space on the lower level. It will be central to the arrival experience and can be viewed from all levels on the north western side of the hospital. It will attach and connect the new and old buildings, and will become the “green heart” of the new hospital.

The garden's central location and connection to a strong desire line from the main entry, shall entice the visitor to walk to the edge of the lobby and view the garden from within the building. The emotional connection created by soft swathes of plants moving in the wind will create a sense of ease for the visitor, encouraging them to take to wander outside or take respite in one of the comfortable seating spaces which feel connected to the space beyond. It offers a variety of small seating areas within massed planting and a generous open lawn. Planting is shaped to create moments of intimate privacy yet maximise the feeling of connection to the open outdoors and sunlight. The edges of the courtyard are densely planted out to create a green curtilage, and a pleasant view from the buildings interior. The garden shall be intrinsic to the cultural room and will operate as an indoor / outdoor room giving easy access to patients and their families.

Legend

1. covered walkway from lobby
2. sweeping garden beds ornamental planting
3. turf gathering areas connect old and new buildings
4. rhythm of landscape flows into cultural room
5. seating spaces are carved into fluid landscape form
6. low planting to building edge





The central healing garden will be seen from many points within the building and be a constant refuge to patients, visitors and staff alike. Fluid forms and simple robust planting will dominate making a fresh inviting garden.

Landscape Precincts

Rooftop Garden

The Rooftop Garden will be predominately used by inpatients and members of their family who visit the hospital.

The design provides will provide a mix of low maintenance shrubs and grasses that form a verdant edge to the building with occasional trees positioned to maximise shade from the western sun in breakout spaces. Screen planting will be positioned to give privacy to patient bedrooms yet provide a pleasant view from within. Paved spaces again juxtapose the fluid desire line, cutting through the sweeping garden, folding out to create a generous and comfortable area where a family member can relax with a patient. Small pockets of turf adjoin these breakout spaces. The position of the roof gardens means they will receive great all day sunlight making them a place hopeful place to heal.

The extent of the design scope/ budget for the rooftop gardens is yet to be confirmed, however it is worth noting that simple yet meaningful rooftop gardens such a these provide patients, staff and family with a fantastic restorative environment, which forms the core of our aspirational principles.

Legend

1. paved paths carve through low shrubs and grasses
2. screen planting to patient bedrooms
3. comforatble timber seating for family groups and patients
4. turf pockets connect to breakout spaces
5. decorative pebble ballast to rooftop
6. pebble ballast finish to concrete deck





Rooftop landscapes provide excellent verdant places to go in close proximity to patient bedrooms



Simple design with maximum patient value

Aboriginal Significance and Symbolism

The use of aboriginal symbolism and bush tucker plants will be incorporated into the hospital landscape to provide a holistic representation of the indigenous and non - indigenous communities of the local area and wider region. The plants currently specified as bush tucker species can be found within the proposed plant schedule. The main entry forecourt landscape intends to reference traditional aboriginal meeting places and incorporate ideas as outlined and discussed by consultation meetings undertaken with selected aboriginal community groups. The proposed use of such symbolism and indigenous representation within the landscape is a vital component of the overall landscape strategy and therefore will be further developed with those selected community groups during the design development stage.

