

Aargus

Environmental - Remediation - Engineering - Laboratories - Drilling

GS4661-B

7th September 2012

Thinc Health Australia Pty Ltd

Level 3, 8 Spring Street,
Sydney NSW 2000

Email: cstewart@thinc.com.au

Dear Charles,

**RE: Proposed Hornsby Ku-Ring Gai Hospital
Cnr Derby Road & Burdett Street, Hornsby
Supplementary Geotechnical Assessment Report**

A geotechnical investigation was carried out by Aargus Engineering Pty Ltd on the 24th – 28th October 2011 and a report was prepared referenced GS4661 dated 15th November 2011.

It was noted at the time of the investigation a private property adjacent to Burdett Street towards the southern part of the site was not within the investigation areas (referenced Appendix B)

However, recent discussions indicate that the private property is now part of the development areas and a supplementary report was requested by Thinc to address the ground conditions of the private property area with respect to the proposed development.

HEAD OFFICE: PO Box 398 Drummoyne NSW 1470

Aargus Pty Ltd ACN 050 212 710 • Aargus Holdings Pty Ltd ACN 063 579 313

Aargus Australia Pty Ltd ACN 086 993 937 • Aargus Recruitment Pty Ltd ACN 098 905 894

Telephone: 1300 137 038 • Facsimile: 1300 136 038 • Email: admin@aargus.net • Website: www.aargus.net

Other office locations in NSW - QLD - VIC - SA and 4 overseas countries

This report should be read in conjunction with the geotechnical investigation report referenced GS4661 dated 15th November 2011.

Based on the information obtained from the geotechnical investigation report referenced GS4661, it was understood BH2 was located northwest of the private property area, close to Burdett Street and consists of silty clay underlain by sandstone bedrock (4.5). BH3 was located northeast of the private property and comprises silty clay underlain by sandstone bedrock (3.5m). BH5 was located immediately southeast of the private property and comprises to medium grained topsoil sands overlying silty clay underlain by sandstone bedrock (1.8m). (Refer to Site Plan Figure 1)

Based on the information from BH2, BH3 and BH5, it suggests that the rock head is sloping from a southerly direction (Derby Road/Burdett Street) towards a northerly direction (Refer to Geotechnical Cross Section of geotechnical investigation report - Appendix B).

As the private property area is enveloped by these borehole information, interpolation on the ground information between the boreholes (BH2, BH3 and BH5) is considered appropriate. Therefore, the ground information provided by the Geotechnical Investigation Report referenced GS4661 dated 15th November 2011 is considered applicable to this private property area.

For and on behalf of
Aargus Pty Ltd

Report prepared by



Mrigesh Tamang

B.Eng. (Civil)

Geotechnical Engineer

Report reviewed by



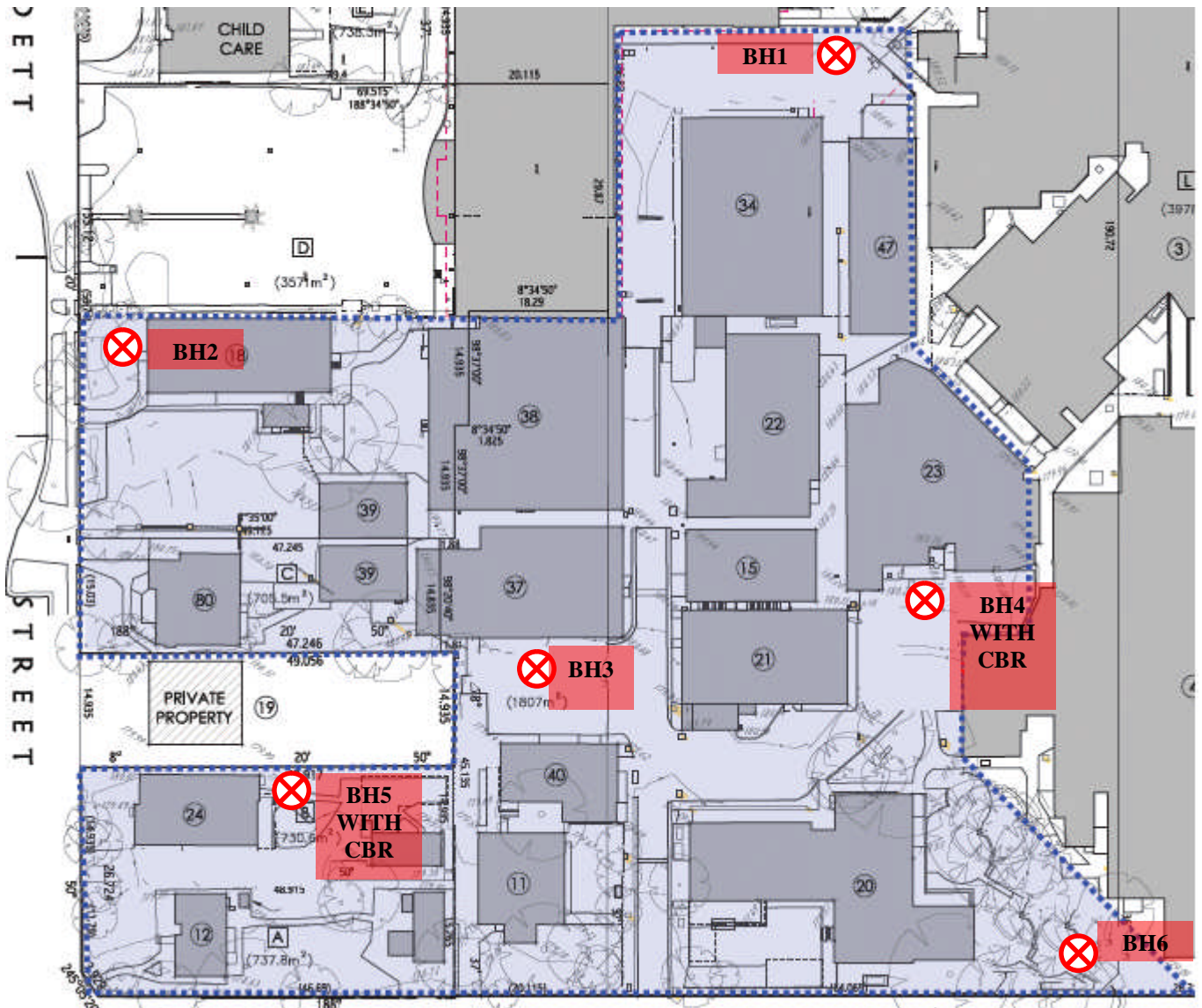
Noriman Mak

BSc, MSc, MBA, MIEAust,

RPE (Civ, Geo), NPER (Civ, Geo)

National Engineering Manager

Site Plan



Aargus Environmental- Remediation- Engineering- Drilling - Laboratories

Drawn	MT	<p><i>Thinc Health Australia Pty Ltd</i></p> <p><i>Hornsby Ku-ring-gai Hospital Redevelopment</i></p> <p><i>Derby Road & Burdett Street, Hornsby</i></p>	 <p>Aargus</p>	Figure
Approved	LM			1
Date	7/9/2012			
Scale	NTS			Job No: GS4661-B