

North Penrith – Stages 2B & 2C

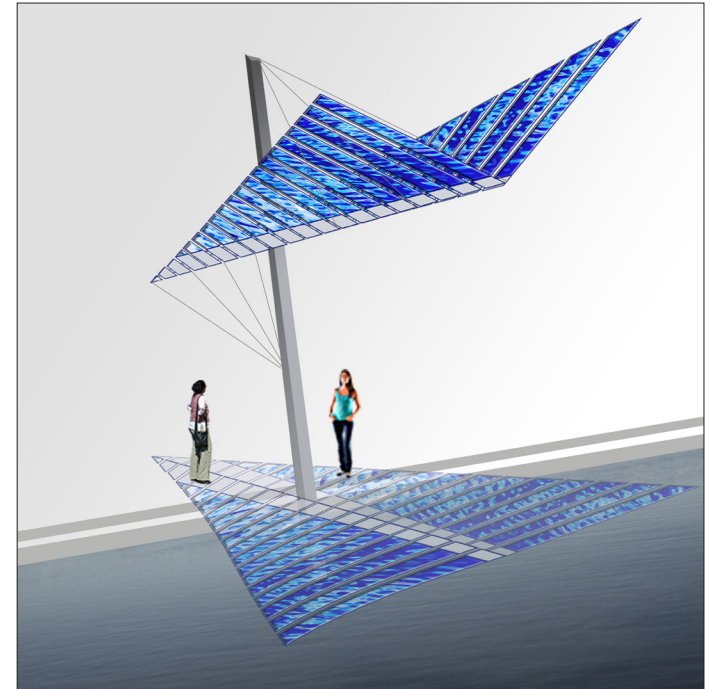
Central Water Feature Public Art
State Significance Development Application

18th October, 2012

Prepared by:
MILNE & STONEHOUSE artists
www.milnestonehouse.com

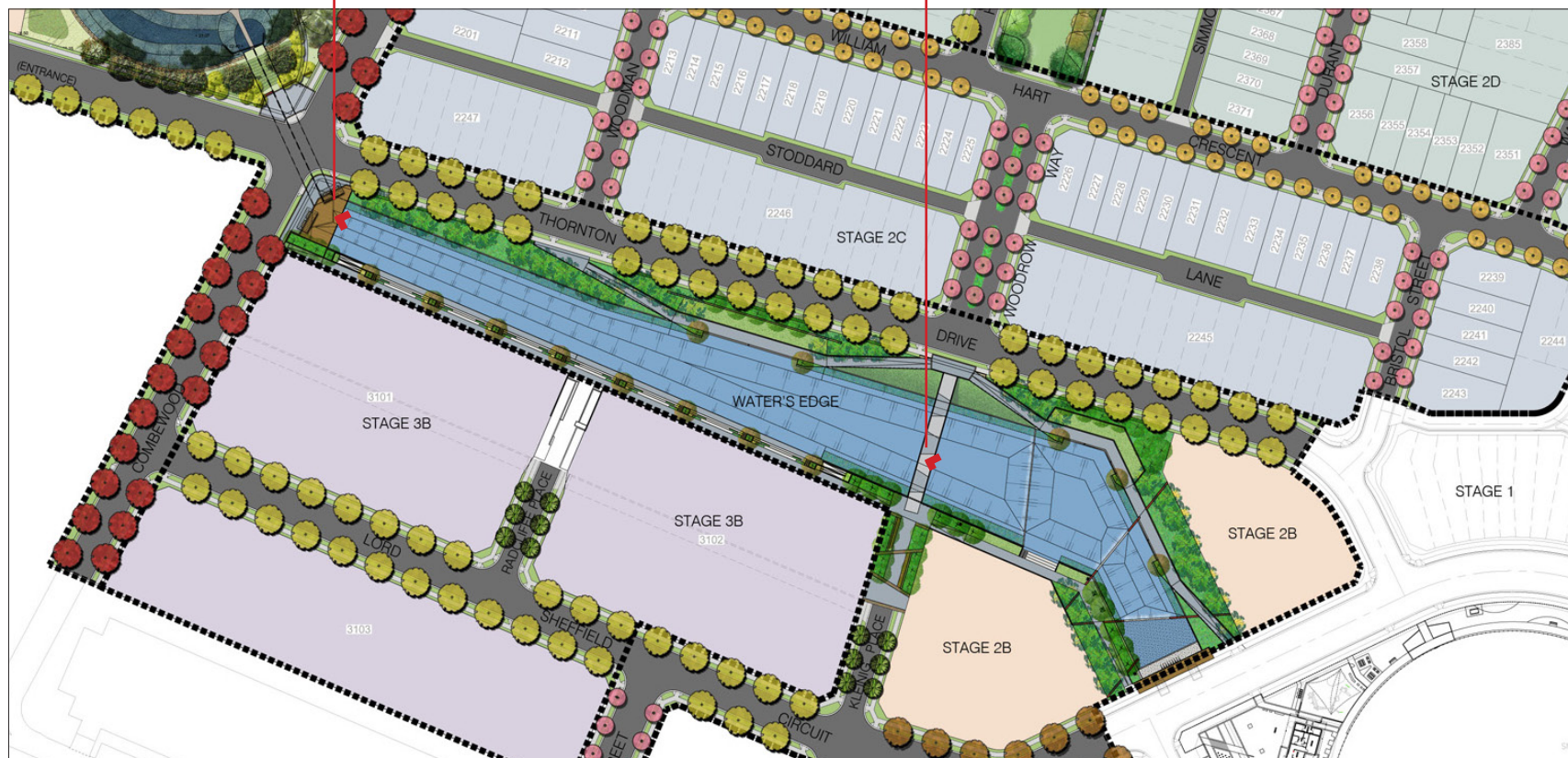
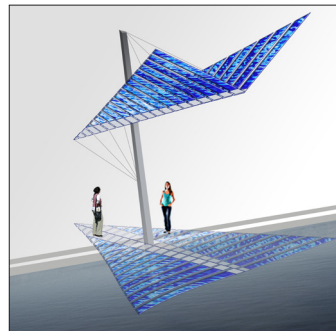


DA00 - Cover sheet
North Penrith
October, 2012



Concept Phoenix

This plan shows the relationship between the two artworks. They show sculptural wing elements of each artwork punctuating the section of the water feature and reflecting in the water. The use of glass reinforces the narrative of the sculptures.

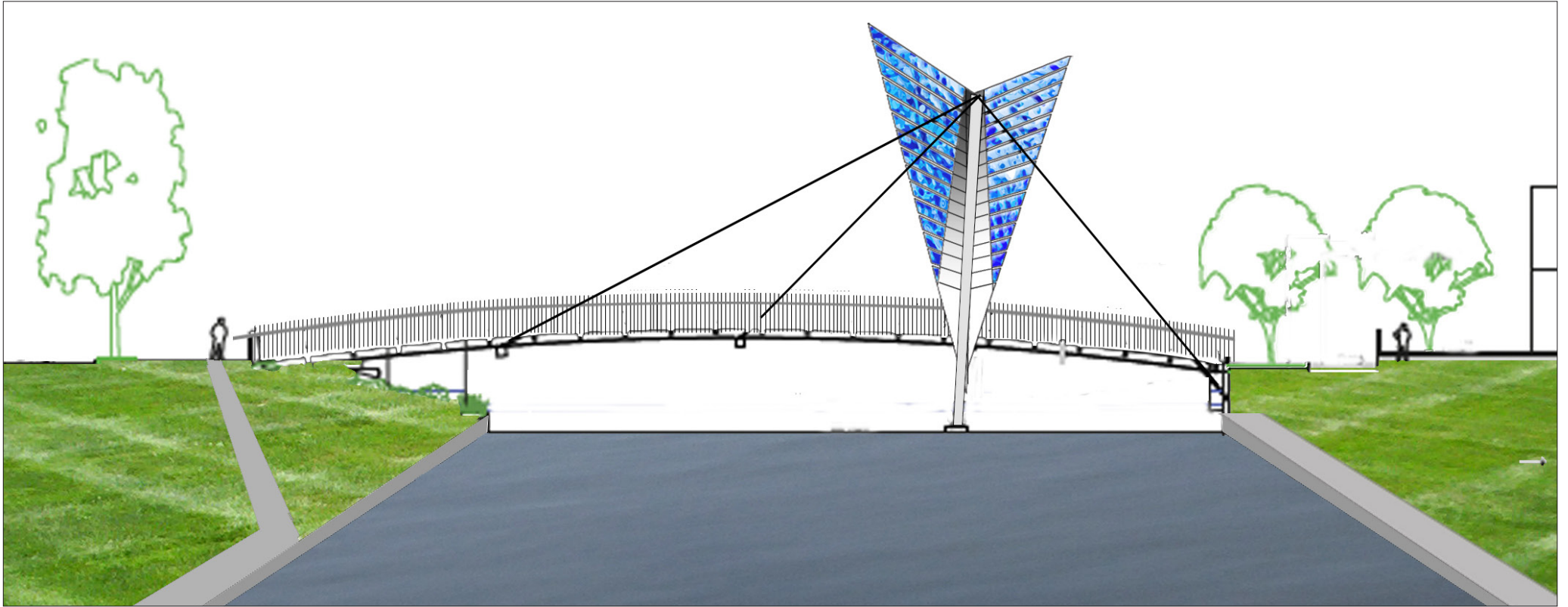


DA01 - Artwork locations

North Penrith - Stages 2B & 2C
October, 2012

MILNE & STONEHOUSE artists

Concept Phoenix



Working Title **Phoenix**

The sculptural elements attached to the bridge post appear from the water. Taking imagery from the wind blowing across the water surface, the sculptural wings, utilising the materials of glass and metal are splayed asymmetrically on either side of the post.

As part of the new community that will arise in North Penrith, the sculpture celebrates this new beginning, the emergence of the new from the old.

Concept Phoenix

Lighting

It is envisaged that the artwork will have integrated LED lighting to create a dynamic night experience. The life span of the LED lights is 15 years.

Glass

The glass designs in the concept images are indicative only. The artist will work with the glass company to develop the unique designs. The pigments / colours are fused into the glass which prevents glass design from fading.

Maintenance

Twice yearly maintenance of a wash down with warm soapy water is required for both artworks.

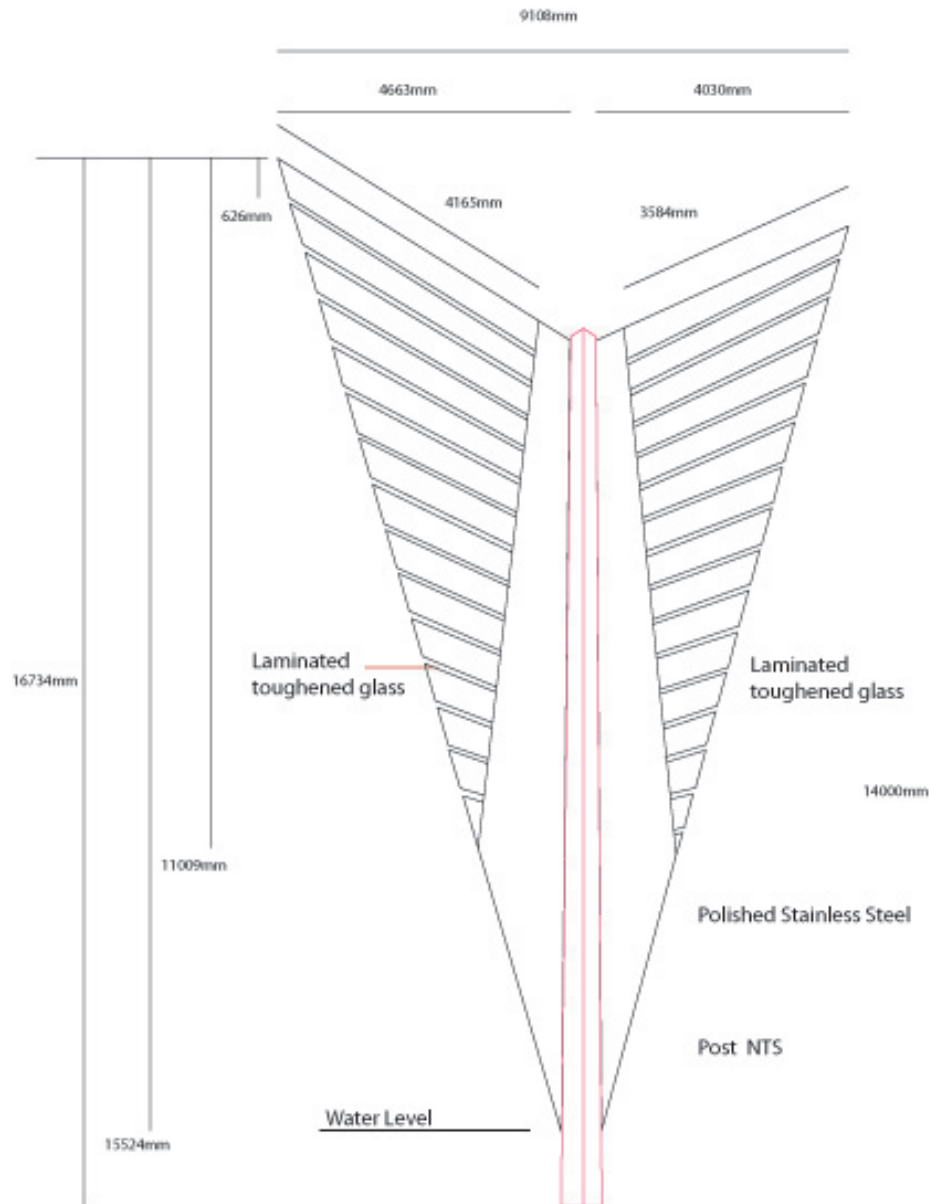


The example left shows the colour potential of the glass.

RIGHT
This image imagines the glass illuminated at night and shows the balustrade with a ripple pattern.

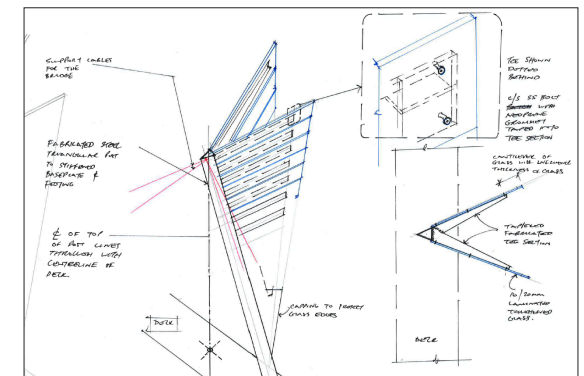


Concept Phoenix



The information below shows preliminary research into the structural design for glass fixing, scale and form by a structural engineer.

The image below shows a potential fixing detail for the glass and structural hand sketches.



Concept Thermal

This sculptural form echoes the ideas of the bridge artwork further west on the decking along the canal.

It refers to the ability of gliders and birds to use the currents of air to gain altitude. It continues the narrative of the phoenix and extends its journey in response to the local atmosphere.

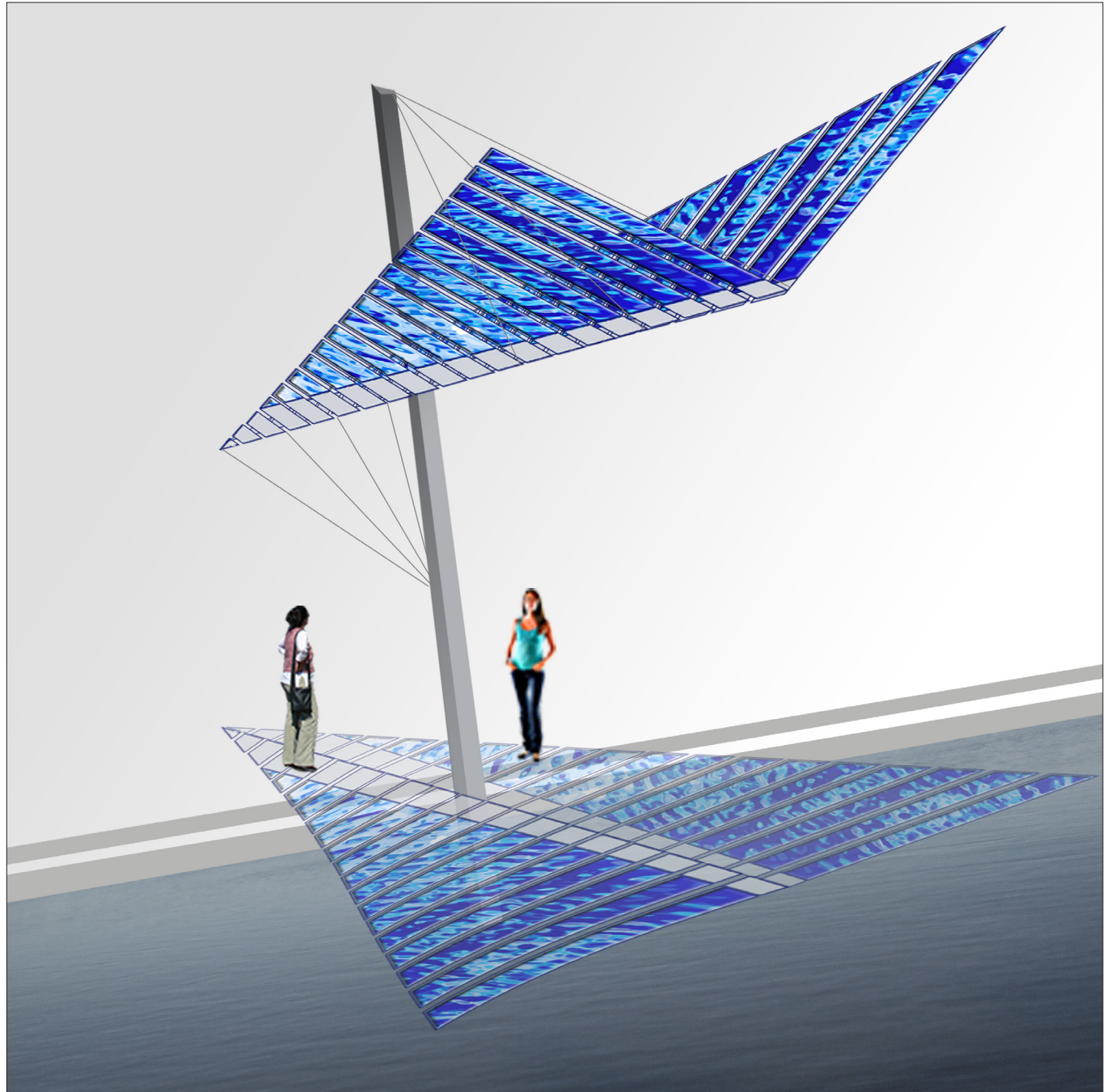
While the two sculptures set up a visual dialogue, the water body links and reflects their story of air and water.

Lighting

LED lighting (life span 15 years) will be integrated into the structure of the artwork to create a night time experience.



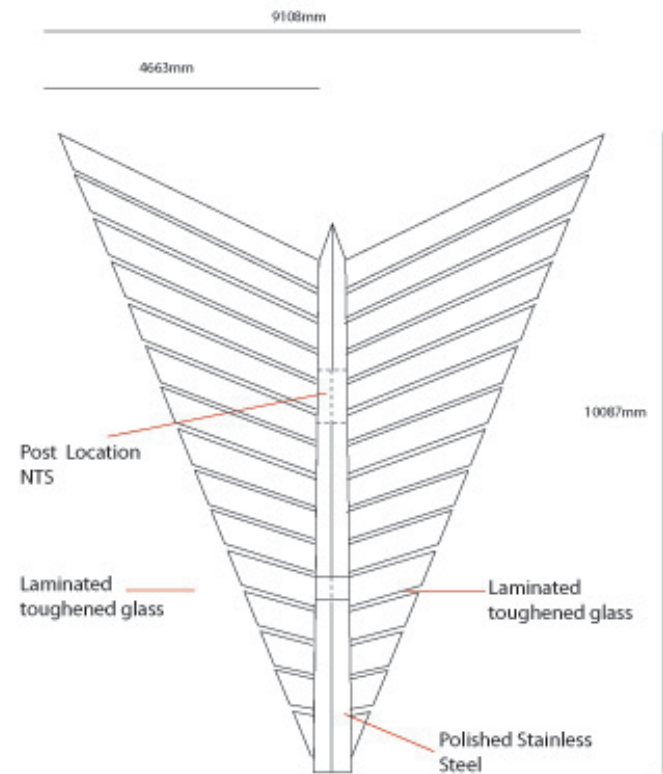
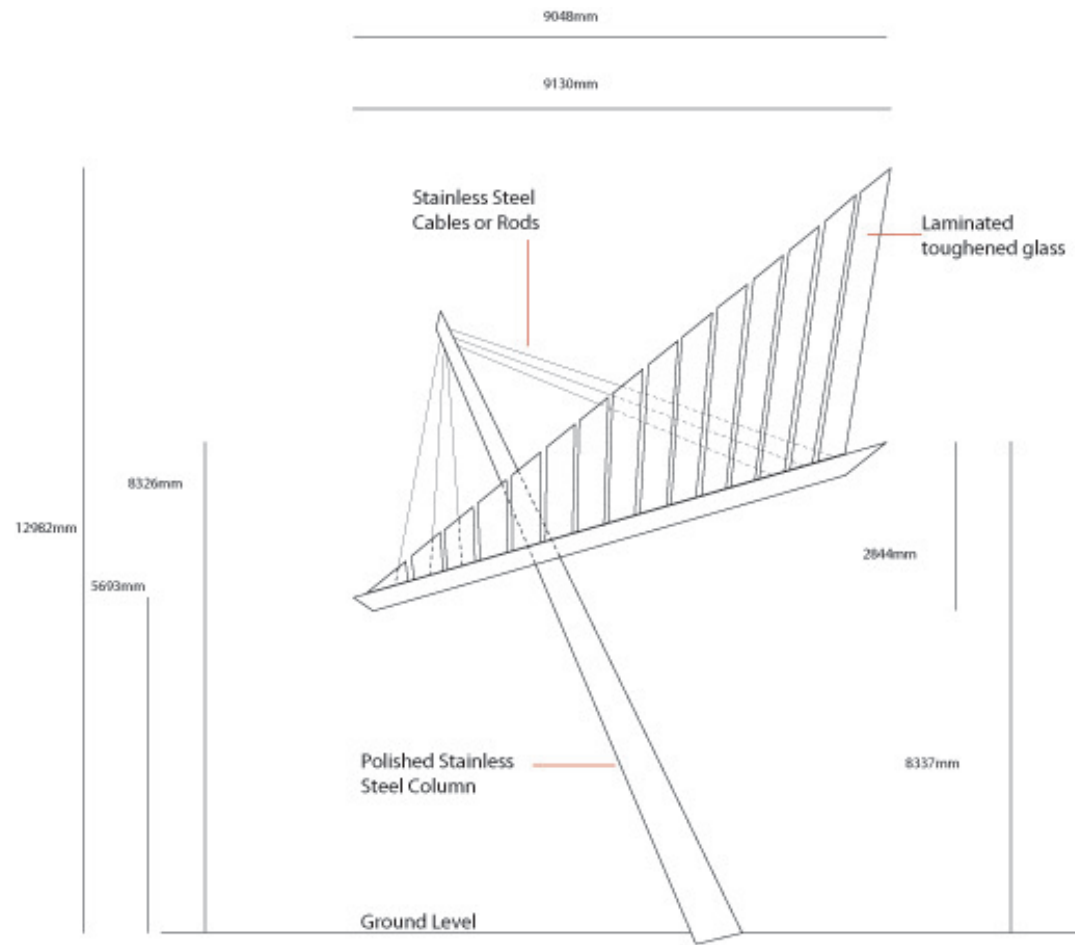
This image explores the wings as a sculpture and also a shade shelter. This concept continues the narrative of the vertical sculptural element on the bridge.



DA05 - Deck artwork - perspective
North Penrith- Stages 2B & 2C
October, 2012

MILNE & STONEHOUSE artists

Concept Thermal



Plan & Elevation

Maintenance

Twice yearly maintenance of a wash down with warm soapy water is required for both artworks.