

CARPARK PLANTING		
CODE	BOTANIC NAME	No POT SIZE
TREES		
MQ	Metaleuca quinquenervia	12 200mm
UNDERSTOREY GRASSES		
DC	Dianella caerulea	71 75mm tubestock
LL	Lomandra longifolia	71 75mm tubestock

BOUNDARY PLANTING		
CODE	BOTANIC NAME	No POT SIZE
TREES		
EP	Eucalyptus paniculata	15 75mm tubestock
ET	Eucalyptus tereticornis	13 75mm tubestock
ES	Eucalyptus saligna	10 75mm tubestock
CT	Allocasuarina torulosa	10 75mm tubestock
MQ	Metaleuca quinquenervia	10 75mm tubestock
SHRUBS		
AB	Acacia binervata	23 75mm tubestock
CA	Cassia australis	23 75mm tubestock
RV	Rapanea variabilis	31 75mm tubestock
SB	Sinibolus bruniianus	31 75mm tubestock
TT	Trema tomentosum	23 75mm tubestock
MLS	Metaleuca linearifolia 'Snowstorm'	23 75mm tubestock
MA	Metaleuca amabilis	31 75mm tubestock

ZONE 2 SPECIES (Hydromulch)			Application Rate/ha
Pioneering Grass Seed			
Japanes Millet (September to March)	Japanes Millet (September to March)		60kg/ha
Rye Corn (April to August)	Rye Corn (April to August)		60kg/ha
Trees, Shrubs and Ground Covers			
Acacia binervata	Two-veined Hickory		2kg/ ha
Acacia longifolia	Golden Shale		2kg/ ha
Allocasuarina littoralis	Black She-oak		0.25kg/ ha
Baekea virgata	Twiggly Myrtle		0.1kg/ ha
Banksia spinulosa	Hairpin Banksia		0.1kg/ ha
Bursaria spinosa	Christmas Bush		0.1kg/ ha
Eucalyptus pillularis	Blackbutt		0.1kg/ ha
Eucalyptus amplifolia	Cabbage Gum		0.1kg/ ha
Hardenbergia violacea	Native Sarsaparilla		1.5kg/ ha
Indigofera australis	Australian Indigo		0.5kg/ ha
Lomandra longifolia	Sprly Headed Mat Rush		1kg/ ha
Kunzea ambigua	White Kunzea		0.2kg/ ha
Oxylobium lildifolium	Native Holly		0.1kg/ ha
Pittosporum revolutum	Yellow Pittosporum		0.1kg/ ha
Pultanea villosa	Hairy Bush Pea		0.1kg/ ha
Slender Riccia	Slender Riccia		0.1kg/ ha
Syncarpia glomulifera	Turpentine		0.1kg/ ha
Themeda australis	Kangaroo Grass		2kg/ ha
Zieria smithii	Sandfly bush		0.1kg/ ha
Wood Fibre mulch			2 tonne/ ha
Dynamic Lifter Fertilizer			250kg/ ha
Envirotrack Blinder			60kg/ ha

CORE RIPARIAN ZONE EXTENDING 10M EITHER SIDE OF THE CREEK. PLANT SYMBOLS ARE INDICATIVE ONLY - REFER TO THE VEGETATION MANAGEMENT PLAN PREPARED BY SOUTHERN HABITAT FOR MORE DETAILED INFORMATION

PROVIDE 100,000 LITRE RAINWATER TANK TO HARVEST RAINWATER

CONSTRUCT CONCRETE RETAINING WALL ON BOUNDARY MAX. HEIGHT 3.5m

NOTE REFER TO ARBORISTS REPORT FOR DETAILED INFORMATION ON THE EXISTING FIG TREE AND ASSOCIATED TREES

ISSUE: Amended Development Application 11.09.14
 ISSUE: Amended Development Application 07.07.14
 ISSUE: Amended Development Application 10.04.14
 ISSUE: Amended Development Application 19.04.13
 ISSUE: Development Application 14.12.12
 REV E: Add carpark planting 11.09.14
 REV D: Addition of access road note, amend notes 07.07.14
 REV C: Amend plant species, bank, OSD 28.03.14
 REV B: Amend southern boundary, northern bank, eastern area, add detention basin 8.8.13
 REV A: Amend riparian zone due to APZ requirements 19.04.13

ochre landscape architects
 ochre landscape architects
 PO Box 395 Wollongong NSW 2520
 Level 1, 126 Crown Street
 Wollongong NSW 2500
 Tel. 02 4227 6427 Fax. 02 4227 6876
 Email: design@ochre.net.au

PROJECT
 Proposed Redyding Cushing Area
 Part Lot 10 D.P. 878167 Wylie Road
 KEMBLA GRANGE

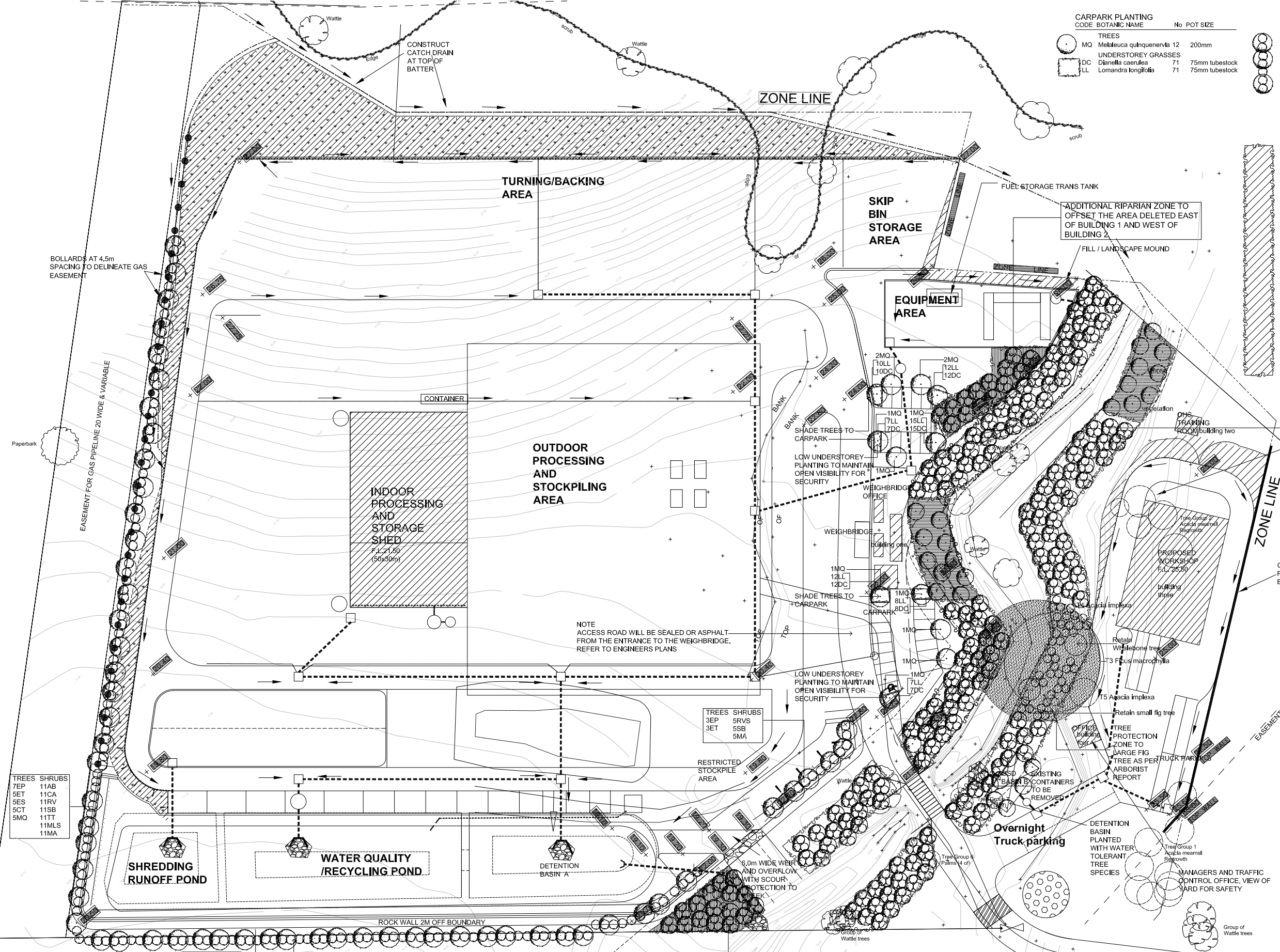
DRAWING TITLE
 Landscape Plan

CLIENT
 Bicorp Pty Ltd

DRAWING NO.
 1442-LC01E SHEET 1 OF 2

SCALE: 1:500 @ A1, 1:1000 @ A3
 CHECKED: TW
 DATE: 10.12.12

NOTE
 REFERENCE SHOULD BE MADE TO THE VMP PREPARED BY SOUTHERN HABITAT FOR DETAILED INFORMATION ON THE INSTALLATION OF THE RIPARIAN CORRIDOR
 NOTE
 REFER TO DRAWING 1157-LC02 FOR DETAILS ON PLANTING, FENCING, SPECIFICATION AND MAINTENANCE OF GENERAL PLANTING AREAS (OTHER THAN THE RIPARIAN ZONE)
 NOTE
 REFER TO DRAWING 1157-LC01 FOR DETAILED INFORMATION ON THE PLANTING OF THE RIPARIAN CORRIDOR



TREES	SHRUBS
7EP	11AB
5ET	11CA
5ES	11RV
5CT	11SB
5MQ	11TT
	11MLS
	11MA

TREES	SHRUBS
5EP	12AB
5ET	12CA
5ES	12RV
5CT	12SB
5MQ	12TT
	12MLS
	12MA

LEGEND	
	T1 Existing trees to be retained
	T1 Existing trees to be removed
	Edge of Vegetation

	Strip grass and place under proposed fill material for mounds. Strip topsoil and stockpile.
	Spread topsoil over prepared ground and embankments from stockpile and hydromulch. Refer to Zone 2 Species List
	Proposed tree and shrub planting within riparian zone. As per 1157-LC01 (approved)
	Proposed tree and shrub buffer planting to boundaries. Refer to plant schedule

	Asset protection zone limits planting to scattered trees and ground cover planting only to suppress weed growth
	Proposed additional riparian planting to offset that deleted due to asset protection zones : 506m2

- TREE PROTECTION**
- FENCING: Where existing trees are to be retained, install tree protection fencing as detailed prior to any construction works commencing on site. Protection fencing shall remain until all works have been completed and shall be maintained throughout the construction works to prevent any access within the tree protection area. The area within the protective fencing shall be kept clear of all building materials and machinery. No washing of equipment or the disposal of cement slurry shall occur within the drip line of trees to be retained on the site or adjacent properties. Site offices shall be located outside the canopy of any existing trees to be retained
 - MULCHING: Tree protection zones shall be mulched with a minimum 75mm thick, 100% recycled hardwood chip or leaf litter mulch
 - IRRIGATION: Tree protection Zones shall be regularly watered