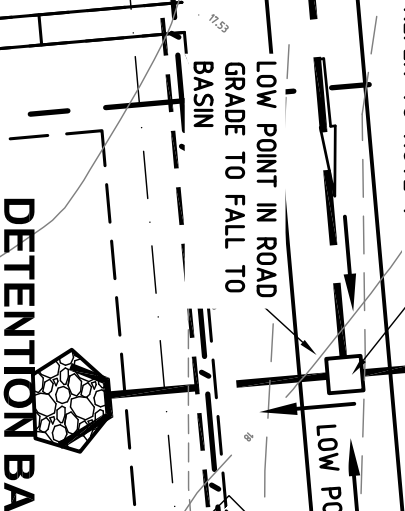


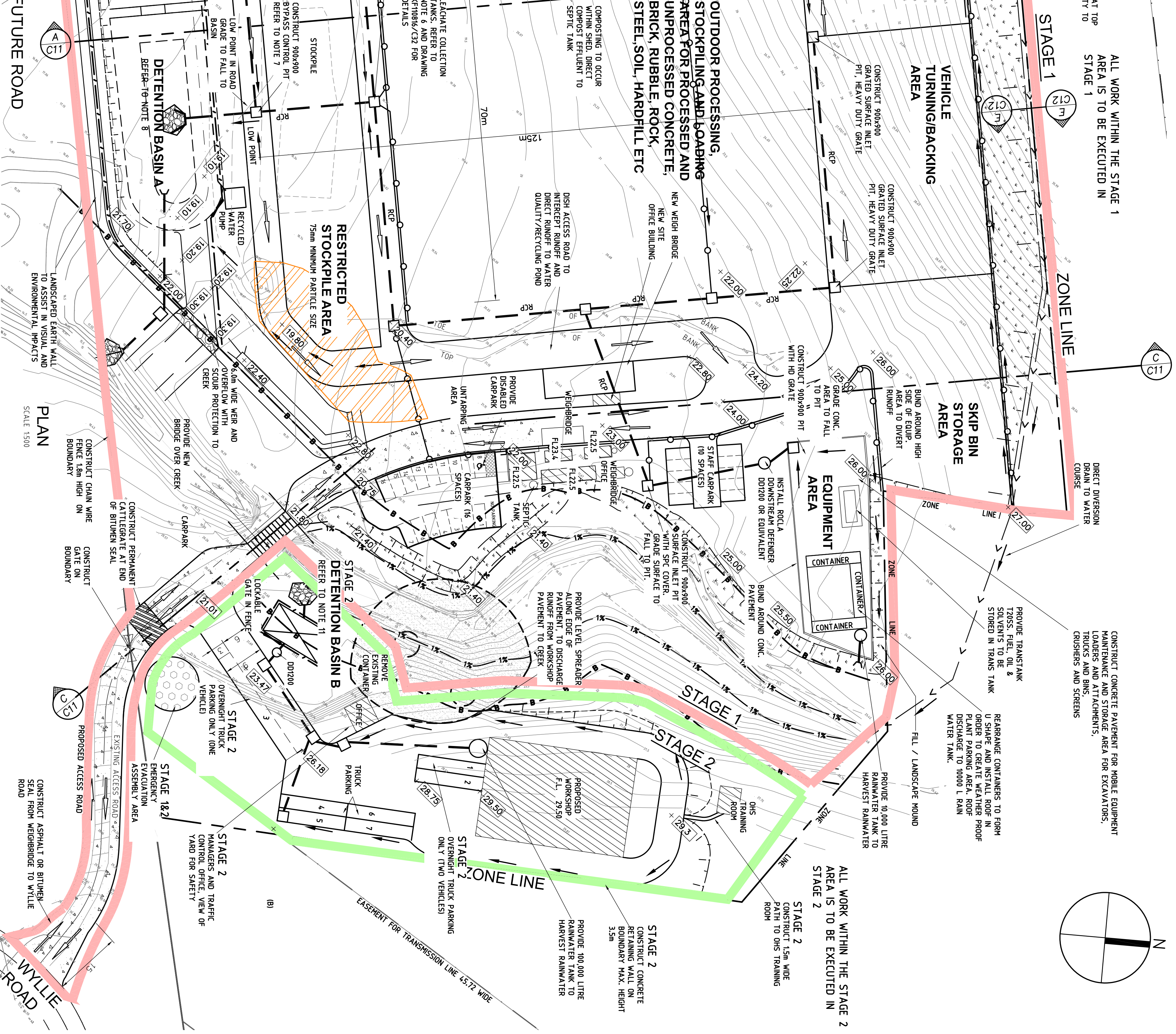
**DO NOT SCALE**


- [illegible]

- 
- OUTDOOR PROCESSING, STOCKPILING AND LOADING AREA FOR PROCESSED AND UNPROCESSED CONCRETE, BRICK, RUBBLE, ROCK, STEEL, SOIL, HARDHILL ETC
- COMPOSTING TO OCCUR WITHIN SHED, DIRECT COMPOST EFFLUENT TO SEPTIC TANK
- 70m
- 125m
- NEW WEIGH BRIDGE  
NEW SITE  
OFFICE BUILDING
- DISH ACCESS ROAD TO INTERFERE HOLLOW AND DIRECT RAINWATER DRAINAGE TO WATER QUALITY/RECYCLING POND
- RESTRICTED STOCKPILE  
75mm MINIMUM PAVEMENT
- STOCKPILE
- CONSTRUCT 900x900
- NEW WASTE WATER TREATMENT PLANT  
EACH CHARGE COLLECTION TANKS, REFER TO NOTE 6 AND DRAWING OF F108/6/C32 FOR DETAILS



1 ☐ REFER TO NC



 <p><b>K.F. Williams &amp; Associates Pty Ltd</b> 28 Auburn Street Wollongong NSW 2500 A.C.N 008 664 417 www.k.f.w.net.au</p>	<p><b>P</b> (02) 4428 7044 <b>f</b> (02) 4426 2004 <b>e</b> mail@k.f.w.net.au</p>	<p><b>Surveyor</b> DENNIS SMITH</p>	<p><b>Date</b> MAY 2012</p>	<p><b>Drawing Title</b></p> <p><b>PROPOSED INDUSTRIAL DEVELOPMENT</b> <b>LOT 10 DP 8/78167</b> <b>WYLLIE ROAD, KEMBLA GRANGE</b> <b>SITE PLAN</b></p>	<p><b>Project No.</b> <b>KF110816</b></p>
	<p><b>Date of Survey</b></p>	<p><b>Drawing</b> A/PROJUDLOVE</p>	<p><b>Drawing No.</b> <b>C10</b></p>		
	<p><b>Height Datum</b> AHD</p>	<p><b>Designed</b> M.L.E.Aust. C.P.Eng</p>			
	<p><b>Origin</b> Checked</p>				
	<p><b>Hotz. Datum</b></p>	<p><b>Approved</b></p>			