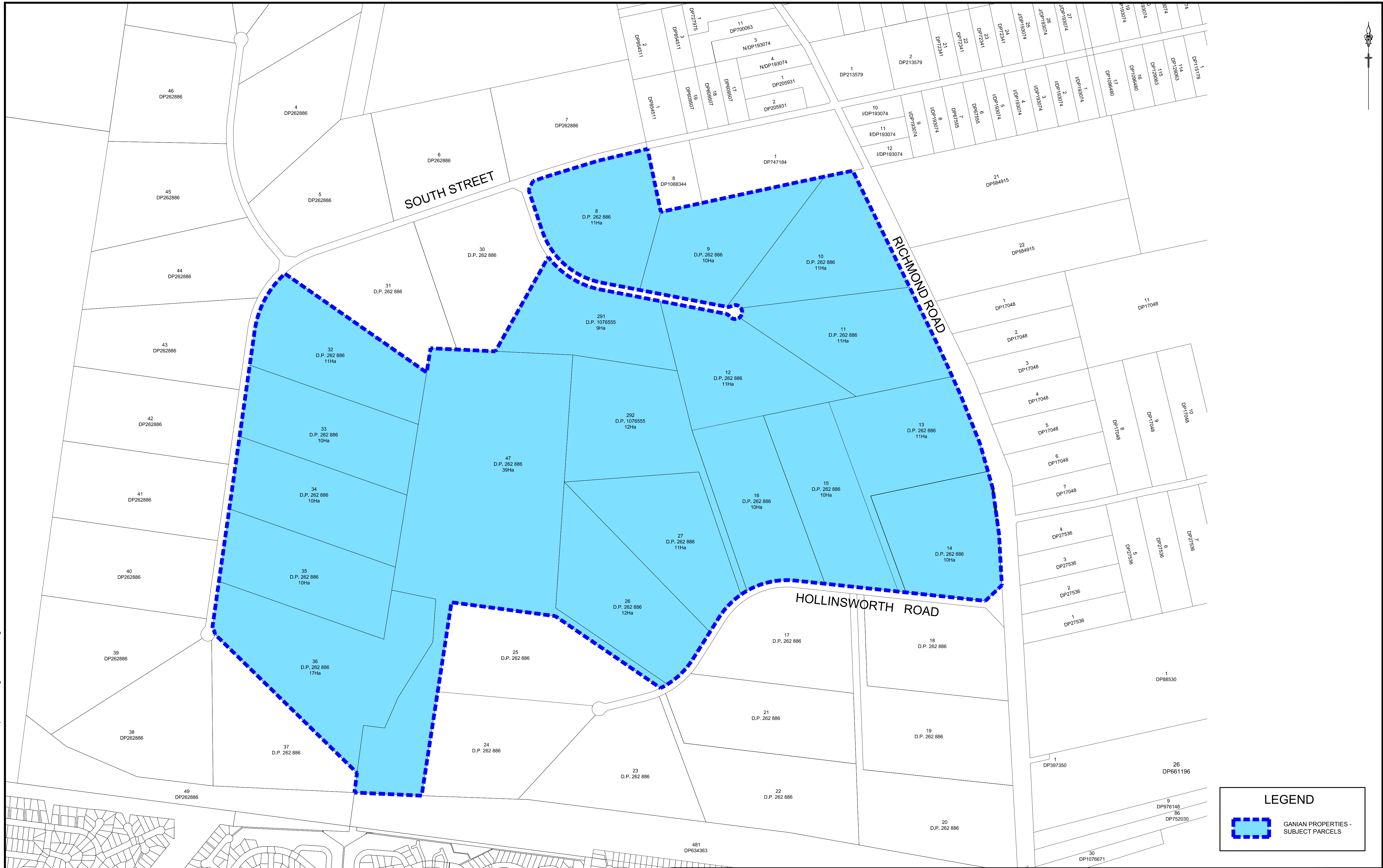


Plotted: 20 Jun 2011 12:28:25 PM File Name: J:\8806D\SK - Concept Sketch Designs\8806SK71.dwg



B	ADDITIONAL LOT INFORMATION ADDED	20/06/11	AS	
A	ISSUED FOR INFORMATION	16/06/11	AS	
ISSUE	AMENDMENT	DATE	BY	

J. WYNDHAM PRINCE

CONSULTING CIVIL INFRASTRUCTURE ENGINEERS
& PROJECT MANAGERS

PO Box 4366 PENRITH WESTFIELD NSW 2750

P 02 4720 3300 F 02 4721 7638 W www.jwprince.com.au E jwp@jwprince.com.au

DESIGNED _AS_	DATUM:	ORIGIN:
DRAWN _AS_	SCALES:	
CHECKED _AS_	1:5000 @ A1	

CLIENT: MARSDEN PARK DEVELOPMENTS C/- APP CORPORATION
THIS DRAWING MUST NOT BE USED FOR CONSTRUCTION UNLESS SIGNED AS PART OF AN APPROVED CONSTRUCTION CERTIFICATE.

ADVANCE COPY ONLY
NOT FOR CONSTRUCTION

MARSDEN PARK INDUSTRIAL PRECINCT

GANIAN PROPERTIES
NORTH WESTERN RELEASE AREA

PLAN No.
8806/SK71

FILE No.
8806SK71

B