

DEVELOPMENT APPLICATION

THIS DRAWING IS COPYRIGHT AND THE PROPERTY OF THE CONSULTANT AND MUST NOT BE RETAINED, COPIED OR USED WITHOUT THE PERMISSION OF THE AUTHOR.
ALL DIMENSIONS MUST BE CHECKED ON SITE BEFORE COMMENCEMENT OF ANY WORK AND DISCREPANCIES IMMEDIATELY REPORTED TO THE CONSULTANT FOR INTERPRETATION.
THIS DRAWING IS TO BE READ IN CONJUNCTION WITH THE OTHER DRAWINGS IN THIS SET AND WITH THE PROJECT SPECIFICATIONS. DO NOT SCALE FROM DRAWINGS. REFER TO GIVEN DIMENSIONS.
VARIATIONS TO WORK SHOWN MUST BE CLAIMED AND APPROVED IN WRITING BEFORE PROCEEDING.

REV	DATE	REWD BY	APPD BY	APPD PDR	AMENDMENT
1	28-06-2012	AC	CY		PART 4 APPLICATION
0	22-06-2012	AC	CY		DRAFT PART 4 APPLICATION

KEY PLAN

CONSULTANT

SKM S2F
A.C.N. 001 024 095
Skelton Knight Mera Pty. Ltd
100 Liverpool Street
26, LONDON
NSW 2000 AUSTRALIA
Tel: +61 2 9628 2500
Fax: +61 2 9628 2510
Web: www.skmgroup.com.au
www.skmgroup.com.au
SKM-S2F is part of the Skelton Knight Mera Group

PROJECT MANAGER

appian group

PRINCIPAL

NSW GOVERNMENT
Health Infrastructure
NSW GOVERNMENT
Health Western Sydney Local Health District

PROJECT

BLACKTOWN MT DRUITT HOSPITAL STAGE 1 EXPANSION & SUB ACUTE PROJECTS
BLACKTOWN CAMPUS: BLACKTOWN ROAD, NSW 2148

ARCHITECTURAL

DRAWING TITLE
BSR - BLACKTOWN STAGE 1 - REFURBISHMENT
EXISTING HOSPITAL - FLOOR PLAN - LEVEL 4

SCALE (B1) 1 : 250	DRAWING No.	REVISION
PROJECT No. NB11472	BSR-AR-DG-DA9614	1

25/07/2012 1:29:35 PM

THIS DRAWING IS COPYRIGHT AND THE PROPERTY OF THE CONSULTANT AND MUST NOT BE RETAINED, COPIED OR USED WITHOUT THE PERMISSION OF THE AUTHOR.

ALL DIMENSIONS MUST BE CHECKED ON SITE BEFORE COMMENCEMENT OF ANY WORK AND DISCREPANCIES IMMEDIATELY REPORTED TO THE CONSULTANT FOR INTERPRETATION.

THIS DRAWING IS TO BE READ IN CONJUNCTION WITH THE OTHER DRAWINGS IN THIS SET AND WITH THE PROJECT SPECIFICATIONS. DO NOT SCALE FROM DRAWINGS. REFER TO GIVEN DIMENSIONS.

VARIATIONS TO WORK SHOWN MUST BE CLAIMED AND APPROVED IN WRITING BEFORE PROCEEDING.

REV	DATE	REVWD BY	APPD BY	APPD PUR	AMENDMENT
2	25-07-2012				PART 4 APPLICATION
1	28-06-2012	AC	CY		PART 4 APPLICATION
0	22-06-2012	AC	CY		DRAFT PART 4 APPLICATION

KEY PLAN

CONSULTANT



A.C.N. 001 024 095
Stellar Knight Merx Pty. Ltd
100 Christie Street
26, LONNARD
NSW 2068 AUSTRALIA

Tel: +61 2 9628 2100
Fax: +61 2 9628 2510
Web: www.stellar-knight.com
www.skmS2F.com

SKM-S2F is part of the Stellar Knight Merx Group

PROJECT MANAGER



PRINCIPAL



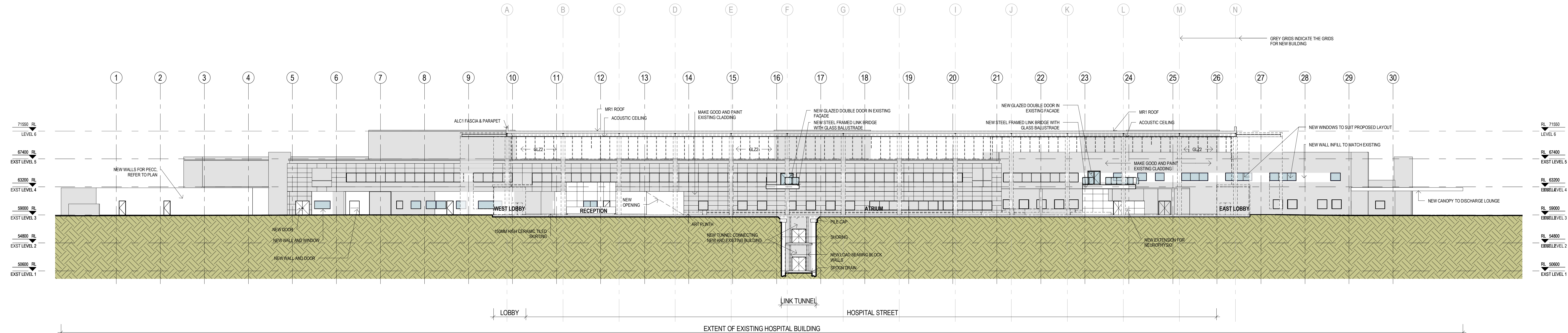
PROJECT

BLACKTOWN MT DRUITT HOSPITAL STAGE 1 EXPANSION & SUB ACUTE PROJECTS
BLACKTOWN CAMPUS: BLACKTOWN ROAD, NSW 2148

ARCHITECTURAL

DRAWING TITLE
**BSR - BLACKTOWN STAGE 1 - REFURISHMENT
EXISTING HOSPITAL - SOUTH ELEVATION**

SCALE (B1) 1 : 250	DRAWING No.	REVISION
PROJECT No. NB11472	BSR-AR-DG-DA9651	2



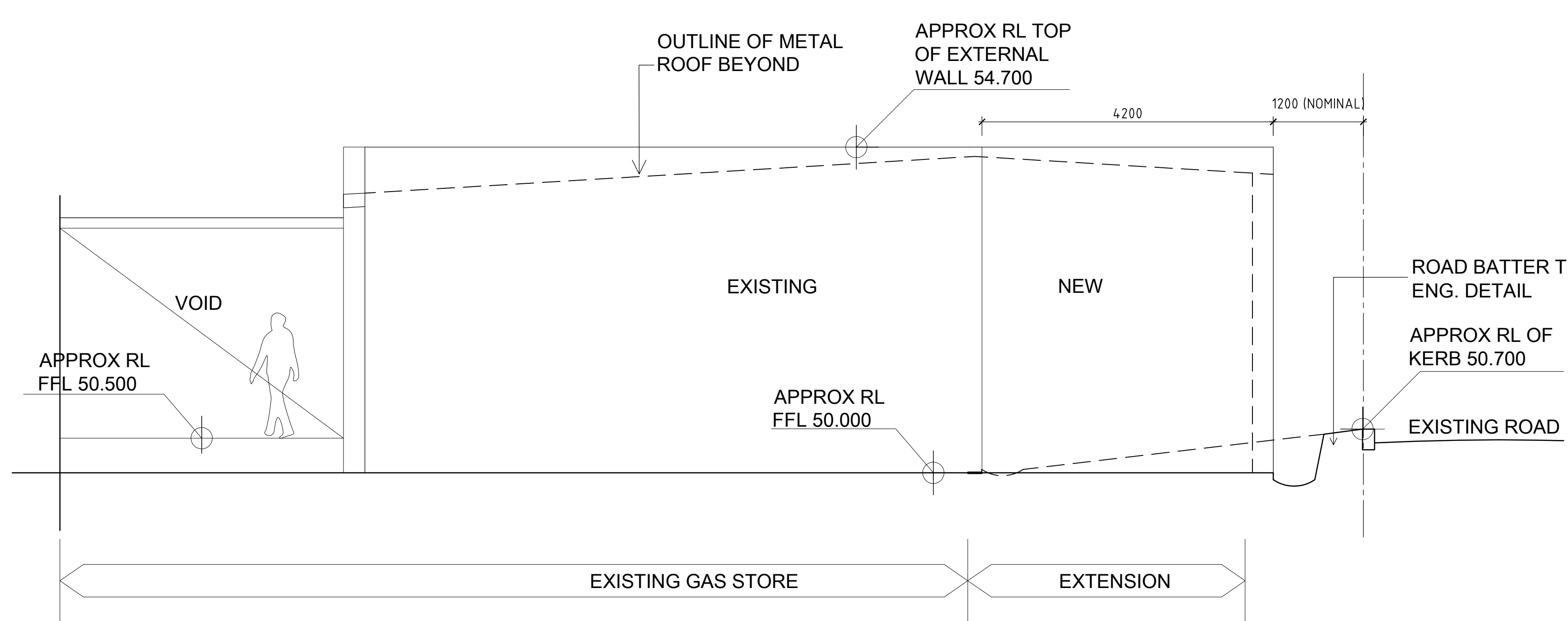
LEGEND

DOTTED LINES INDICATE PROPOSED NEW BUILDING TO SOUTH SIDE OF EXISTING BUILDING

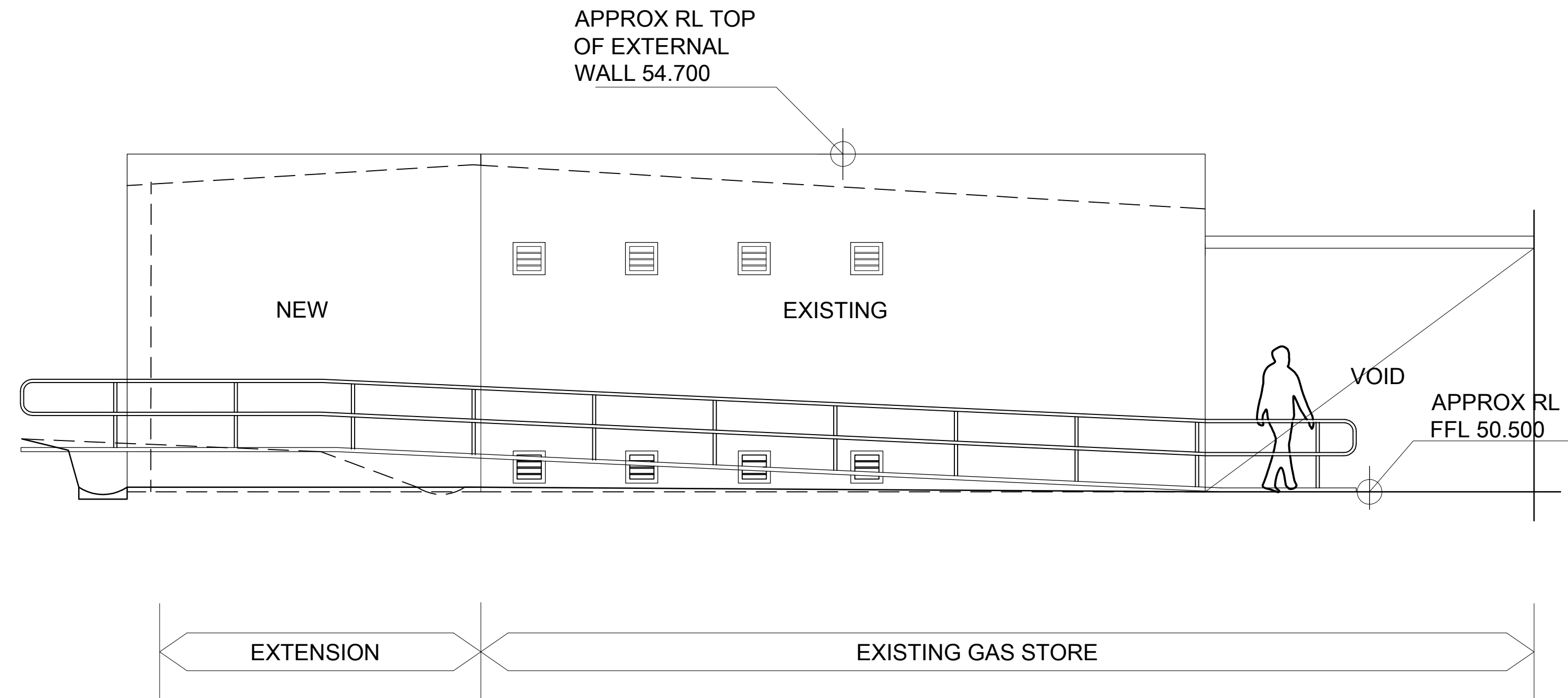
EXISTING AREA NOT PART OF THIS REFURBISHMENT

MATERIAL LEGEND

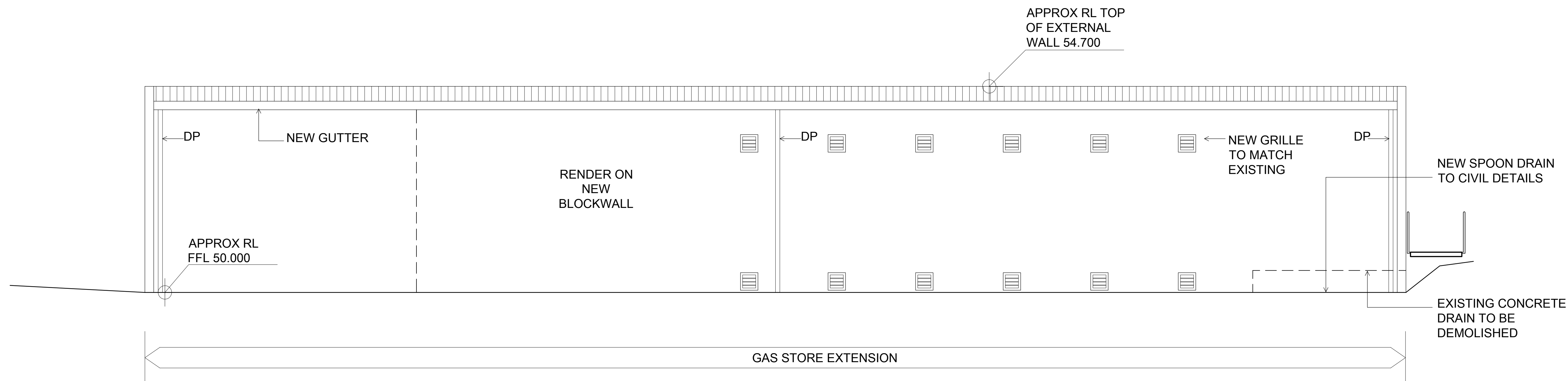
CODE	ITEM	COLOUR	FINISH	LOCATION
ROOFING				
MR1	Sheet Metal Roofing	White	Satin	Main Roof, Roof to Level 6 plant rooms, Hospital Street Roof, Canopy roofs
WMR1	Waterproof Membrane Roof topped with Ballast	White Ballast	-	Bunker Roof, Hydraulic plant room only
WMR2	Waterproof Membrane Roof with trafficable paving	-	pavers	Terraces, Sections of Courtyards with concrete slab base
MC1	Parapet Cappings and Flashings	Grey / Dark Grey	Satin	All parapets to Main Building, not including Hospital Street Roof and canopies
WDC1	Timber Veneered Cladding	Natural	Clear, Satin	Soffits to all canopies including one side of each vertical section of canopy.
WALLS				
PCC1	Cladding Panels - Brickwork, Terracotta or Aluminium-faced Cladding Panels to be determined	Grey / Dark Grey	Matt / Satin	General, refer drawings
CM1	Sheet Metal Cladding	Grey / Dark Grey	Satin	Spandrels behind louvers.
ALC1	Aluminium-faced Cladding Panels with integral parapets	White	Satin	Fasciae / Parapets to Hospital Street roof and canopies. Projecting rooms and horizontal shading on upper floors.
WDB1	Australian Hardwood wall boarding	Natural	Matt	Level 3 Facade
LVS1	Louvers	Grey / Dark Grey	Satin	Level 6 Plant, Level 3 & 4 Plant to South Cores
FENESTRATION				
GLZ1	Glazing Type 1	Glass: Clear with grey tint Frame : Grey / Dark Grey	Frame: Satin	General, refer drawings
GLZ2	Curtain Wall Glazing Type 2	Glass: Clear with grey tint Frame : Grey / Dark Grey	Frame: Satin	End facades to atrium, facades to north of courtyards and all other facades to courtyards at Levels 3 & 4 only.
GLZ3	Coloured glass spandrels	Glass: Black colourback Frame : Grey / Dark Grey	Frame: Satin	Spandrel panels on facades to north of courtyards and all other facades to courtyards between Levels 3 & 4 only.
GLZ4	Skylight Glazing	Glass: Clear with grey tint Frame : Grey / Dark Grey	Frame: Satin	Atrium Roof
SHADING				
LVS2	Vertical Sunshading	Grey / Dark Grey	Satin	South Elevation
GLZ5	Vertical Coloured Laminated Glass Fins	Variety of bright colours: Red, Orange, Yellow, Violet, Etc.	Translucent	General, refer drawings
STS1	Exterior Exposed Structural Steel	White	Semi Gloss	Supports to canopies



NORTH ELEVATION 1:50



SOUTH ELEVATION 1:50



WEST ELEVATION 1:50



EAST ELEVATION 1:50

<div>03/2019</div> <div>THIS DRAWING IS COPYRIGHT AND THE PROPERTY OF THE CONSULTANT AND MUST NOT BE RETAINED, COPIED OR USED WITHOUT THE PERMISSION OF THE AUTHOR.</div> <div>ALL DIMENSIONS MUST BE CHECKED ON SITE BEFORE COMMENCEMENT OF ANY WORK AND DISCREPANCIES IMMEDIATELY REPORTED TO THE CONSULTANT FOR INTERPRETATION.</div> <div>THIS DRAWING IS TO BE READ IN CONJUNCTION WITH THE OTHER DRAWINGS IN THIS SET AND WITH THE PROJECT SPECIFICATIONS. DO NOT SCALE FROM DRAWINGS. REFER TO GIVEN DIMENSIONS.</div> <div>VARATIONS TO WORK SHOWN MUST BE CLAIMED AND APPROVED IN WRITING BEFORE PROCEEDING.</div>											KEY PLAN			CONSULTANT			PROJECT MGR.		PRINCIPAL		PROJECT		ARCHITECTURE					
														<div>SKM S2F</div> <div>A.C.N. 001 024 095 S2F Knight Infra Pty Ltd 100 Chippendale Street 10, Chippendale NSW 1505 Tel: +61 2 9628 2100 Fax: +61 2 9628 2510 Web: www.skm2f.com.au S2F is part of the S2F Knight Infra Group</div>			<div>appian group</div> <div>NSW Health Infrastructure</div>		<div>NSW Health Western Sydney Local Health District</div>		NSW HEALTH INFRASTRUCTURE BLACKTOWN MT DRUITT HOSPITAL STAGE 1 EXPANSION AND SUB ACUTE BEDS PROJECTS		DRAWING TITLE EXISTING CONDITIONS GAS STORE ELEVATIONS					
																							SCALE (B1) 1:50		DRAWING No.		REVISION	
																							PROJECT No. NB11472		BSR-AR-DG-0453		0	

VIEW OF EAST FACADE SHOWING ENTRANCE AND 'HOSPITAL STREET'



VIEW OF WEST FACADE FROM SOUTH WEST



VIEW OF SOUTH FACADE FROM MULTI-LEVEL CARPARK



DETAIL OF WEST FACADE



PCC1

GLZ5

GLZ5

PCC1

ALC1

ALC2

**CM1
MC1
LVS1
LVS2
GLZ1-4 (FRAME)**

PCC1

WDC1

**MR1
STS1**