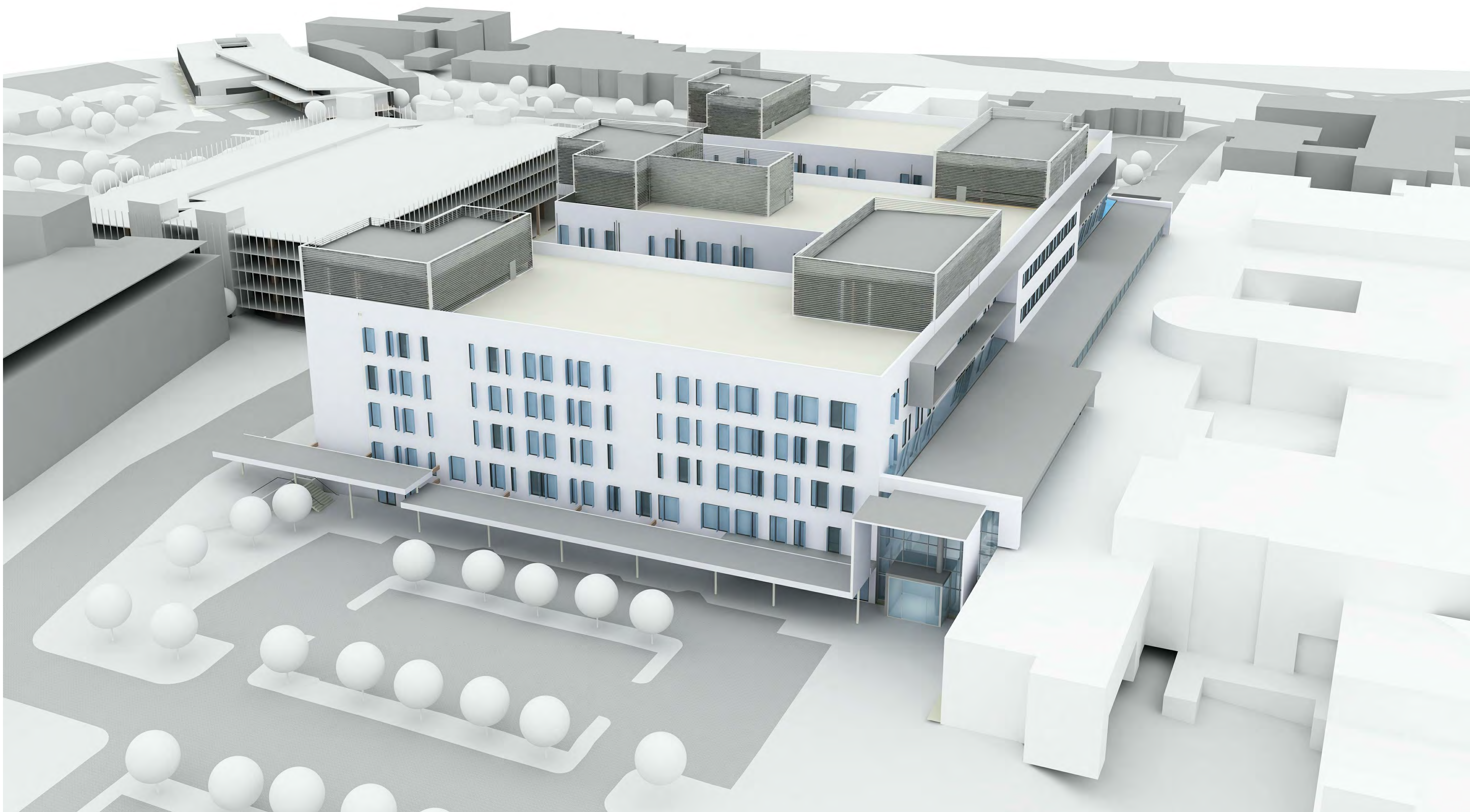


BLACKTOWN MT DRUITT HOSPITAL STAGE 1 EXPANSION AND SUB ACUTE BEDS PROJECT

BSN / BSR - BLACKTOWN STAGE 1 - NEW BUILD AND REFURBISHMENT



ARCHITECTURAL DRAWING INDEX	
BIN-AR-DG- DA9500	DRAWING INDEX & COVER PAGE
BIN-AR-DG- DA9505	SITE PLAN
BSN-AR-DG- DA9511	CSB - FLOOR PLAN - LEVEL 1
BSN-AR-DG- DA9512	CSB - FLOOR PLAN - LEVEL 2
BSN-AR-DG- DA9513	CSB - FLOOR PLAN - LEVEL 3
BSN-AR-DG- DA9514	CSB - FLOOR PLAN - LEVEL 4
BSN-AR-DG- DA9515	CSB - FLOOR PLAN - LEVEL 5
BSN-AR-DG- DA9516	CSB - FLOOR PLAN - LEVEL 6
BSN-AR-DG- DA9517	CSB - FLOOR PLAN - LEVEL 7
BSN-AR-DG- DA9518	CSB - FLOOR PLAN - LEVEL 8
BSN-AR-DG- DA9519	CSB - ROOF PLAN
BSN-AR-DG- DA9541	CSB - ELEVATIONS - SHEET 1
BSN-AR-DG- DA9542	CSB - ELEVATIONS - SHEET 2
BSR-AR-DG- DA9611	EXISTING HOSPITAL - FLOOR PLAN - LEVEL 1
BSR-AR-DG- DA9612	EXISTING HOSPITAL - FLOOR PLAN - LEVEL 2
BSR-AR-DG- DA9613	EXISTING HOSPITAL - FLOOR PLAN - LEVEL 3
BSR-AR-DG- DA9614	EXISTING HOSPITAL - FLOOR PLAN - LEVEL 4
BSR-AR-DG- DA9651	EXISTING HOSPITAL - SOUTH ELEVATION
BRD-AR-DG- DA9701	RENAL/DIABETES BUILDING - FLOOR PLAN
BSR-AR-DG- 0452	GAS STORE PLAN & SECTION
BSR-AR-DG- 0453	GAS STORE ELEVATIONS

DEVELOPMENT APPLICATION

THIS DRAWING IS COPYRIGHT AND THE PROPERTY OF THE CONSULTANT AND MUST NOT BE RETAINED, COPIED OR USED WITHOUT THE PERMISSION OF THE AUTHOR.

ALL DIMENSIONS MUST BE CHECKED ON SITE BEFORE COMMENCEMENT OF ANY WORK AND DISCREPANCIES IMMEDIATELY REPORTED TO THE CONSULTANT FOR INTERPRETATION.

THIS DRAWING IS TO BE READ IN CONJUNCTION WITH THE OTHER DRAWINGS IN THIS SET AND WITH THE PROJECT SPECIFICATIONS. DO NOT SCALE FROM DRAWINGS. REFER TO GIVEN DIMENSIONS.

VARIATIONS TO WORK SHOWN MUST BE CLAIMED AND APPROVED IN WRITING BEFORE PROCEEDING.

REV	DATE	REV'D BY	APP'D BY	APP'D FOR	AMENDMENT
2	16-08-2012	AC	CY		PART 4 APPLICATION
1	28-05-2012	AC	CY		PART 4 APPLICATION
0	22-06-2012	AC	CY		DRAFT PART 4 APPLICATION

KEY PLAN

CONSULTANT



A.C.N. 001 024 085  
Stocker Knight Mera Pty. Ltd  
100 Collins Street  
26, LOUNGBROS  
NSW 2068 AUSTRALIA  
Tel: +61 2 9628 2100  
Fax: +61 2 9628 2513  
Web: www.stockerknight.com.au  
www.skm2f.com

SKM-S2F is part of the Stocker Knight Mera Group

PROJECT MANAGER



PRINCIPAL



PROJECT

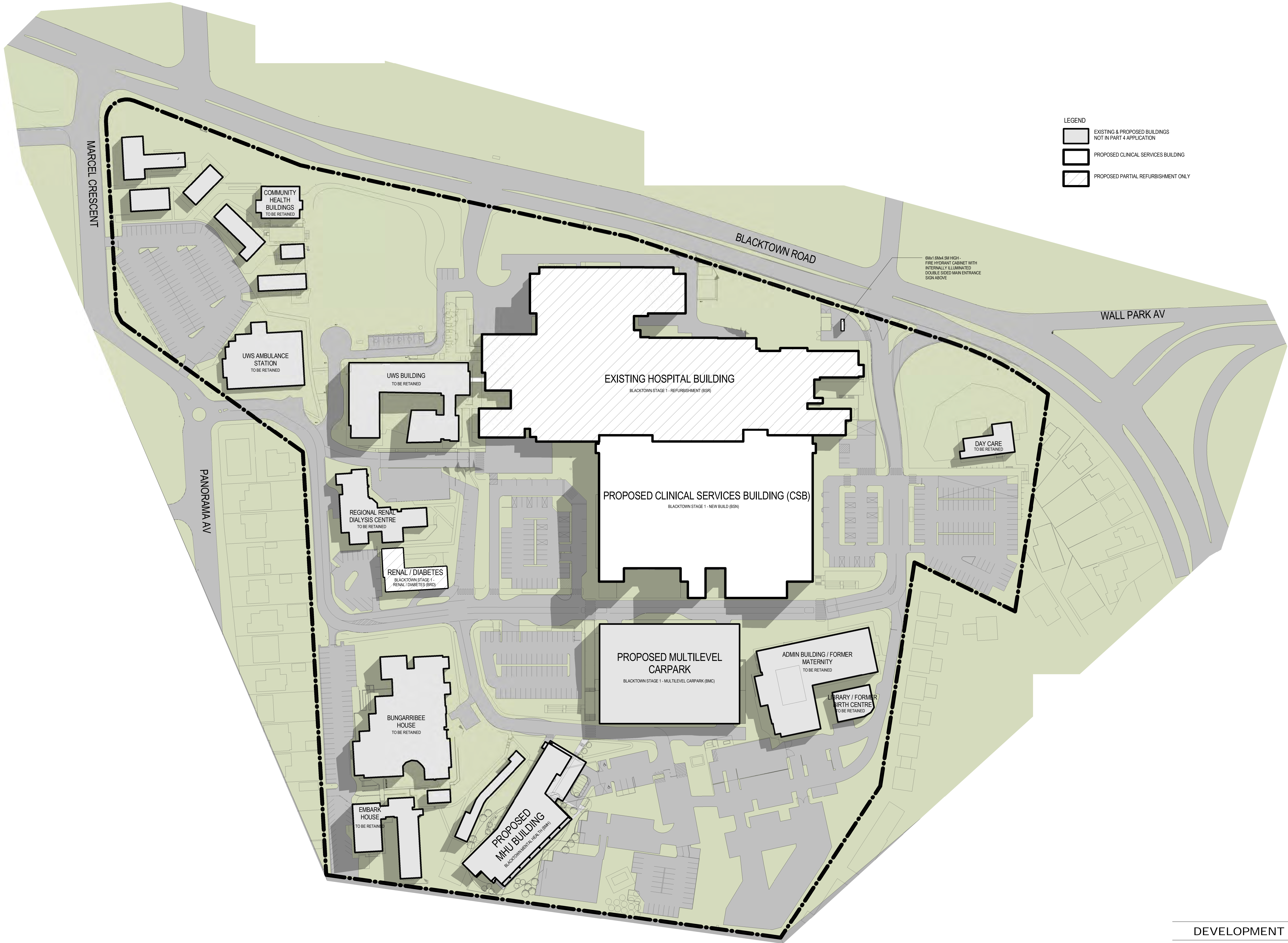
**BLACKTOWN MT DRUITT HOSPITAL STAGE 1 EXPANSION AND SUB ACUTE BEDS PROJECTS**  
BLACKTOWN HOSPITAL:  
BLACKTOWN ROAD, BLACKTOWN, NSW 2148

ARCHITECTURAL

DRAWING TITLE  
BIN - BLACKTOWN - STAGE 1  
DRAWING INDEX & COVER PAGE

SCALE (@B1)	DRAWING No.	REVISION
PROJECT No: NB11472	BIN-AR-DG-DA9500	2





DEVELOPMENT APPLICATION

THIS DRAWING IS COPYRIGHT AND THE PROPERTY OF THE CONSULTANT AND MUST NOT BE RETAINED, COPIED OR USED WITHOUT THE PERMISSION OF THE AUTHOR.  
ALL DIMENSIONS MUST BE CHECKED ON SITE BEFORE COMMENCEMENT OF ANY WORK AND DISCREPANCIES IMMEDIATELY REPORTED TO THE CONSULTANT FOR INTERPRETATION.  
THIS DRAWING IS TO BE READ IN CONJUNCTION WITH THE OTHER DRAWINGS IN THIS SET AND WITH THE PROJECT SPECIFICATIONS. DO NOT SCALE FROM DRAWINGS. REFER TO GIVEN DIMENSIONS.  
VARIATIONS TO WORK SHOWN MUST BE CLAIMED AND APPROVED IN WRITING BEFORE PROCEEDING.

REV	DATE	REVISED BY	APPROVED BY	APPROVED FOR	AMENDMENT
2	18-07-2012	AC	CY		PART 4 APPLICATION
1	28-06-2012	AC	CY		PART 4 APPLICATION
0	22-06-2012	AC	CY		DRAFT PART 4 APPLICATION

KEY PLAN

CONSULTANT



A.C.N. 001 024 095  
Skelton Knight Mox Pty. Ltd  
100 Collins Street  
26 LONDON  
NSW 2000 AUSTRALIA  
Tel: +61 2 9628 2500  
Fax: +61 2 9628 2510  
Web: www.skmgroup.com.au  
www.skmgroup.com

SKM-S2F is part of the Skelton Knight Mox Group

PROJECT MANAGER



PRINCIPAL



PROJECT

**BLACKTOWN MT DRUITT HOSPITAL STAGE 1 EXPANSION AND SUB ACUTE BEDS PROJECTS**  
BLACKTOWN HOSPITAL:  
BLACKTOWN ROAD, BLACKTOWN, NSW 2148

ARCHITECTURAL

DRAWING TITLE  
BIN - BLACKTOWN - STAGE 1  
SITE PLAN

SCALE (B1) 1 : 800

PROJECT No: NB11472

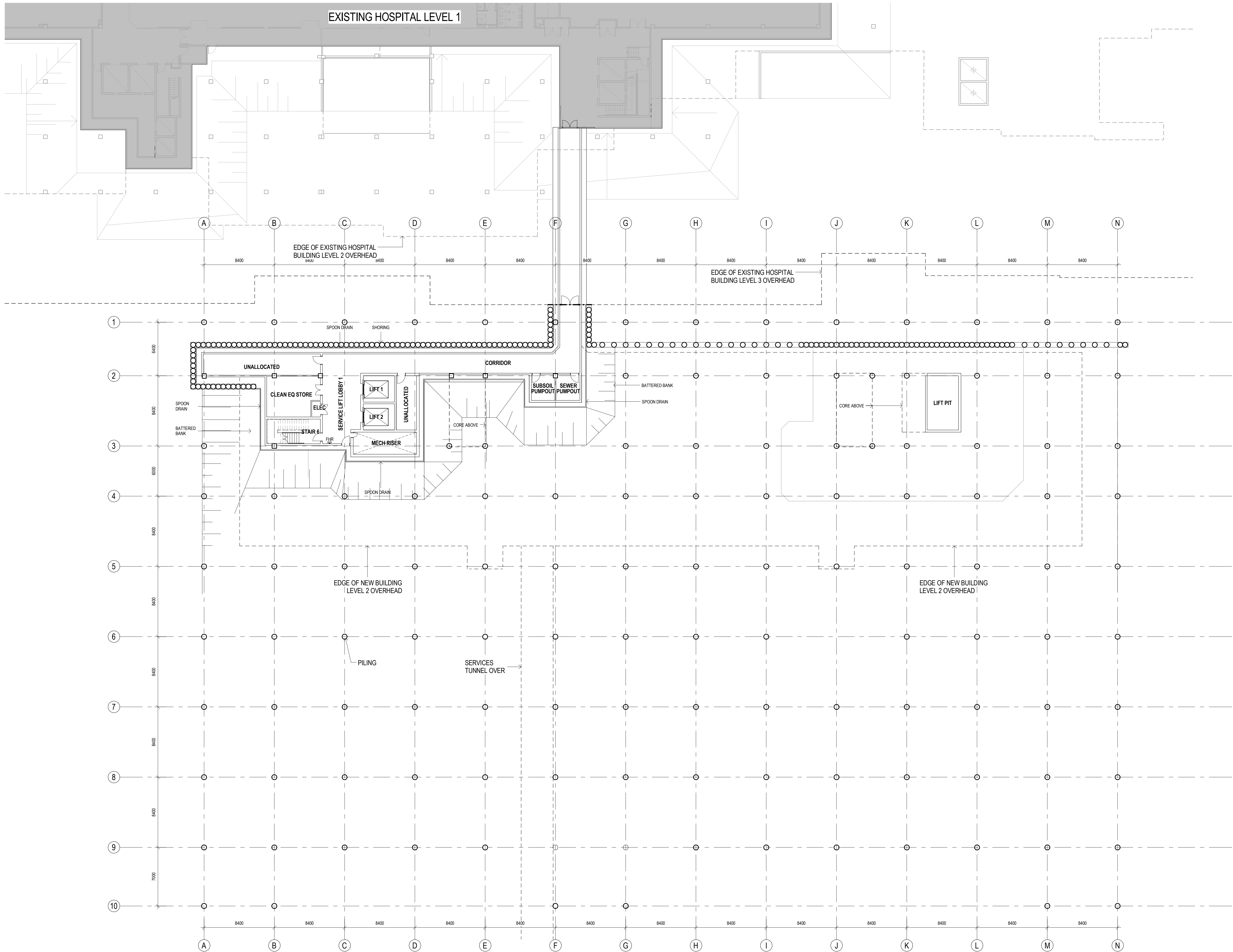
DRAWING No:

BIN-AR-DG-DA9505

REVISION

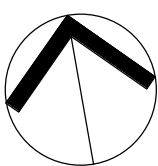
2





PLAN LEGEND  
- - - - - INDICATES FIRE RATED WALL  
- - - - - INDICATES SMOKE WALL  
EXISTING HOSPITAL BUILDING. REFER TO DA9611-9651 FOR WORK IN THAT BUILDING

NOTE:  
INTERNAL LAYOUT AND ROOM NAMES ARE INDICATIVE ONLY AND ARE SUBJECT TO CHANGE DURING DETAILED DESIGN.



DEVELOPMENT APPLICATION

THIS DRAWING IS COPYRIGHT AND THE PROPERTY OF THE CONSULTANT AND MUST NOT BE RETAINED, COPIED OR USED WITHOUT THE PERMISSION OF THE AUTHOR.  
ALL DIMENSIONS MUST BE CHECKED ON SITE BEFORE COMMENCEMENT OF ANY WORK AND DISCREPANCIES IMMEDIATELY REPORTED TO THE CONSULTANT FOR INTERPRETATION.  
THIS DRAWING IS TO BE READ IN CONJUNCTION WITH THE OTHER DRAWINGS IN THIS SET AND WITH THE PROJECT SPECIFICATIONS. DO NOT SCALE FROM DRAWINGS. REFER TO GIVEN DIMENSIONS.  
VARIATIONS TO WORK SHOWN MUST BE CLAIMED AND APPROVED IN WRITING BEFORE PROCEEDING.

REV	DATE	REV'D BY	APP'D BY	APP'D P.D.R.	AMENDMENT
3	14-08-2012	AC	CY		PART 4 APPLICATION
2	25-07-2012	AC	CY		PART 4 APPLICATION
1	28-06-2012	AC	CY		PART 4 APPLICATION
0	22-06-2012	AC	CY		DRAFT PART 4 APPLICATION

KEY PLAN

CONSULTANT

**SKM S2F**

A.C.N. 001 024 095  
Skelton Knight Mera Pty. Ltd  
100 LIVERPOOL STREET  
NSW 2000 AUSTRALIA  
Tel: +61 2 9628 2100  
Fax: +61 2 9628 2510  
Web: www.skmgroup.com.au  
SKM-S2F is part of the Skelton Knight Mera Group

PROJECT MANAGER

**appian group**

PRINCIPAL

**NSW GOVERNMENT** **Health Infrastructure**  
**NSW GOVERNMENT** **Health Western Sydney Local Health District**

PROJECT

**BLACKTOWN MT DRUITT HOSPITAL STAGE 1 EXPANSION & SUB ACUTE PROJECTS**  
BLACKTOWN CAMPUS: BLACKTOWN ROAD, NSW 2148

ARCHITECTURAL

DRAWING TITLE  
BSN - BLACKTOWN STAGE 1 NEW BUILD  
CSB - FLOOR PLAN - LEVEL 1

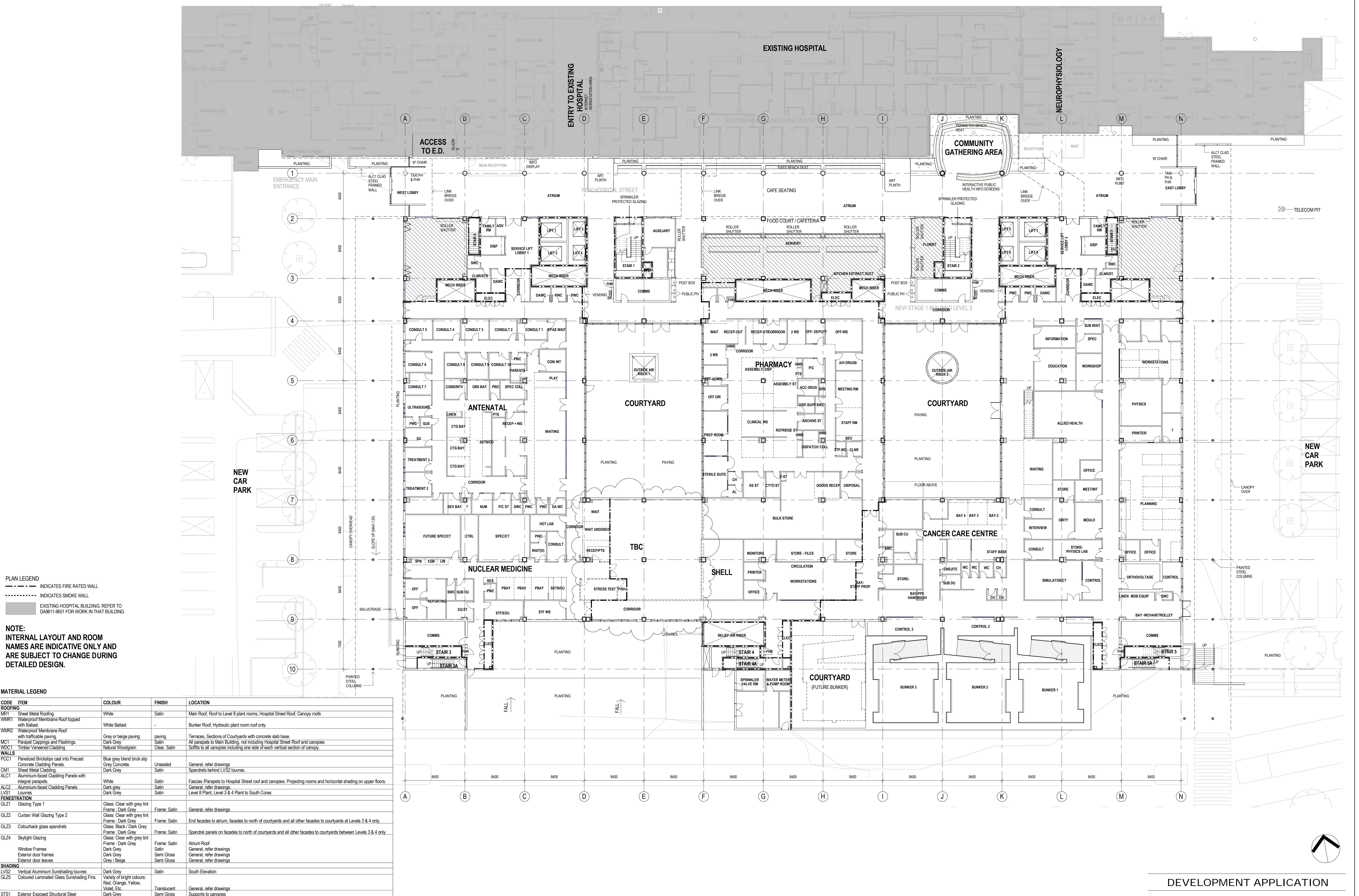
SCALE (B1) 1 : 200

DRAWING No.  
PROJECT No. NB11472 BSN-AR-DG-DA9511

REVISION  
3







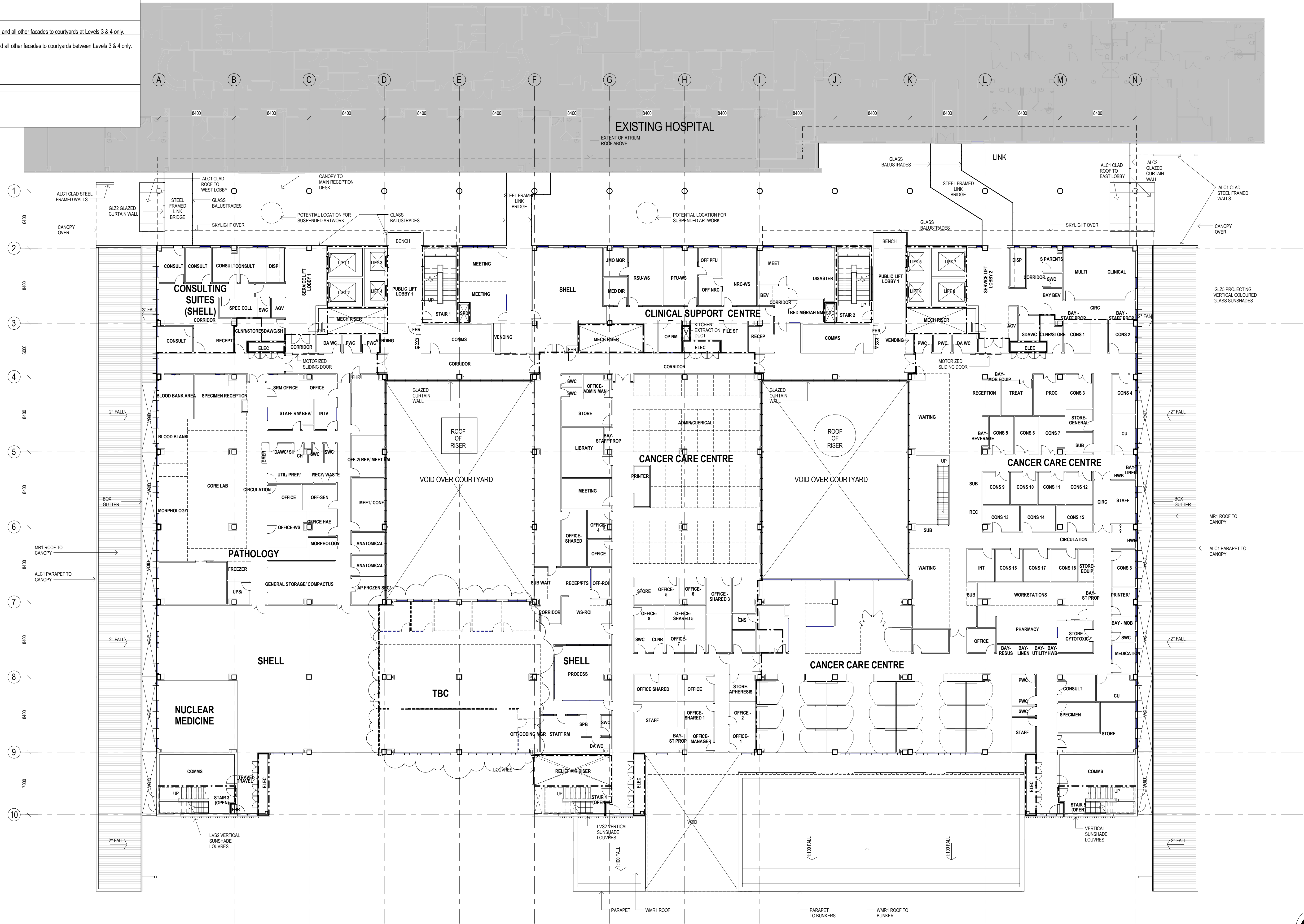
THIS DRAWING IS COPYRIGHT AND THE PROPERTY OF THE CONSULTANT AND MUST NOT BE RETAINED, COPIED OR USED WITHOUT THE PERMISSION OF THE AUTHOR.					KEY PLAN					CONSULTANT					PROJECT MANAGER					PRINCIPAL					PROJECT					ARCHITECTURAL														
ALL DIMENSIONS MUST BE CHECKED ON SITE BEFORE COMMENCEMENT OF ANY WORK AND DISCREPANCIES IMMEDIATELY REPORTED TO THE CONSULTANT FOR INTERPRETATION.																									BLACKTOWN MT DRUITT HOSPITAL STAGE 1 EXPANSION & SUB ACUTE PROJECTS					ARCHITECTURAL														
THIS DRAWING IS TO BE READ IN CONJUNCTION WITH THE OTHER DRAWINGS IN THIS SET AND WITH THE PROJECT SPECIFICATIONS. DO NOT SCALE FROM DRAWINGS. REFER TO GIVEN DIMENSIONS.										A/CN 001 001 000 Skeletal Knight Mcc Pty. Ltd 300 Christie Street St. Leonards NSW 1585 AUSTRALIA Tel: +61 2 8828 2100 Fax: +61 2 8828 2910 Web: www.draconconsulting.com www.skm2sf.com															BSN - BLACKTOWN STAGE 1 NEW BUILD CSB - FLOOR PLAN - LEVEL 3																			
VARIATIONS TO WORK SHOWN MUST BE CLAIMED AND APPROVED IN WRITING BEFORE PROCEEDING.										SKM-S2F is part of the Skeletal Knight Mcc Group															BLACKTOWN CAMPUS: BLACKTOWN ROAD, NSW 2148																			
REV					DATE					REVISED BY					APPROVED BY					P.DIR					AMENDMENT																			
3					14-08-2012					AC					CY															PART 4 APPLICATION														
2					25-07-2012					AC					CY															PART 4 APPLICATION														
1					28-06-2012					AC					CY															PART 4 APPLICATION														
0					22-06-2012					AC					CY															DRAFT PART 4 APPLICATION														
SCALE (BB1) 1 : 200																														DRAWING No.					BSN-AR-DG-DA9513					REVISION				
PROJECT No					NB11472																																			3				



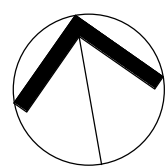
MATERIAL LEGEND			
CODE	ITEM	COLOUR	FINISH
ROOFING			
MR1	Sheet Metal Roofing	White	Satin
WMR1	Waterproof Membrane Roof topped with Ballast	White Ballast	-
WMR2	Waterproof Membrane Roof with trafficable paving	Grey or beige paving	paving
MC1	Parapet Cappings and Flashings	Dark Grey	Satin
WDC1	Timber Veneered Cladding	Natural Woodgrain	Clear, Satin
WALLS			
PCC1	Panelized Bricks/cast into Precast Concrete Cladding Panels	Blue grey blend brick slip Grey Concrete	Unsealed
CM1	Sheet Metal Cladding	Dark Grey	Satin
ALC1	Aluminium-faced Cladding Panels with integral parapets	White	Satin
ALC2	Aluminium-faced Cladding Panels	Dark grey	Satin
LVS1	Louvers	Dark Grey	Satin
FENESTRATION			
GLZ1	Glazing Type 1	Glass: Clear with grey tint Frame: Dark Grey	Frame: Satin
GLZ2	Curtain Wall Glazing Type 2	Glass: Clear with grey tint Frame: Dark Grey	Frame: Satin
GLZ3	Colourback glass spandrels	Glass: Black / Dark Grey Frame: Dark Grey	Frame: Satin
GLZ4	Skylight Glazing	Glass: Clear with grey tint Frame: Dark Grey	Frame: Satin
SHADING			
LVS2	Vertical Aluminium Sunshading louvers	Dark Grey	Satin
GLZ5	Coloured Laminated Glass Sunshading Fins	Variety of bright colours: Red, Orange, Yellow, Violet, Etc.	Translucent
STS1	Exterior Exposed Structural Steel	Dark Grey	Semi Gloss

PLAN LEGEND	
---	INDICATES FIRE RATED WALL
-----	INDICATES SMOKE WALL
EXISTING HOSPITAL BUILDING, REFER TO DA9611-9651 FOR WORK IN THAT BUILDING	

NOTE:  
INTERNAL LAYOUT AND ROOM NAMES ARE INDICATIVE ONLY AND ARE SUBJECT TO CHANGE DURING DETAILED DESIGN.



LEVEL 4



DEVELOPMENT APPLICATION

THIS DRAWING IS COPYRIGHT AND THE PROPERTY OF THE CONSULTANT AND MUST NOT BE RETAINED, COPIED OR USED WITHOUT THE PERMISSION OF THE AUTHOR.  
ALL DIMENSIONS MUST BE CHECKED ON SITE BEFORE COMMENCEMENT OF ANY WORK AND DISCREPANCIES IMMEDIATELY REPORTED TO THE CONSULTANT FOR INTERPRETATION.  
THIS DRAWING IS TO BE READ IN CONJUNCTION WITH THE OTHER DRAWINGS IN THIS SET AND WITH THE PROJECT SPECIFICATIONS. DO NOT SCALE FROM DRAWINGS. REFER TO GIVEN DIMENSIONS.  
VARIATIONS TO WORK SHOWN MUST BE CLAIMED AND APPROVED IN WRITING BEFORE PROCEEDING.

REV	DATE	REWD	BY	APPD	BY	APPD	BY	AMENDMENT
3	14-08-2012	AC	CY					PART 4 APPLICATION
2	25-07-2012	AC	CY					PART 4 APPLICATION
1	28-06-2012	AC	CY					PART 4 APPLICATION
0	22-06-2012	AC	CY					DRAFT PART 4 APPLICATION

KEY PLAN

CONSULTANT

**SKM S2F**

A.C.N. 001 024 095  
Skelton Knight Merz Pty. Ltd  
100 Circular Street  
26, LIVERPOOL  
NSW 2060 AUSTRALIA  
Tel: +61 2 9628 2500  
Fax: +61 2 9628 2510  
Web: www.skm2sf.com.au  
www.skm2sf.com

SKM-S2F is part of the Skelton Knight Merz Group

PROJECT MANAGER

**appian group**

PRINCIPAL

**NSW GOVERNMENT**  
**Health Infrastructure**  
**NSW GOVERNMENT**  
**Health Western Sydney Local Health District**

PROJECT

**BLACKTOWN MT DRUITT HOSPITAL STAGE 1 EXPANSION & SUB ACUTE PROJECTS**  
BLACKTOWN CAMPUS: BLACKTOWN ROAD, NSW 2148

ARCHITECTURAL

DRAWING TITLE  
**BSN - BLACKTOWN STAGE 1 NEW BUILD**  
**CSB - FLOOR PLAN - LEVEL 4**

SCALE ( @B1 ) 1 : 200  
PROJECT No: **NB11472**

DRAWING No: **BSN-AR-DG-DA9514**

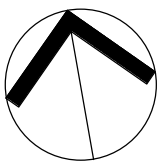
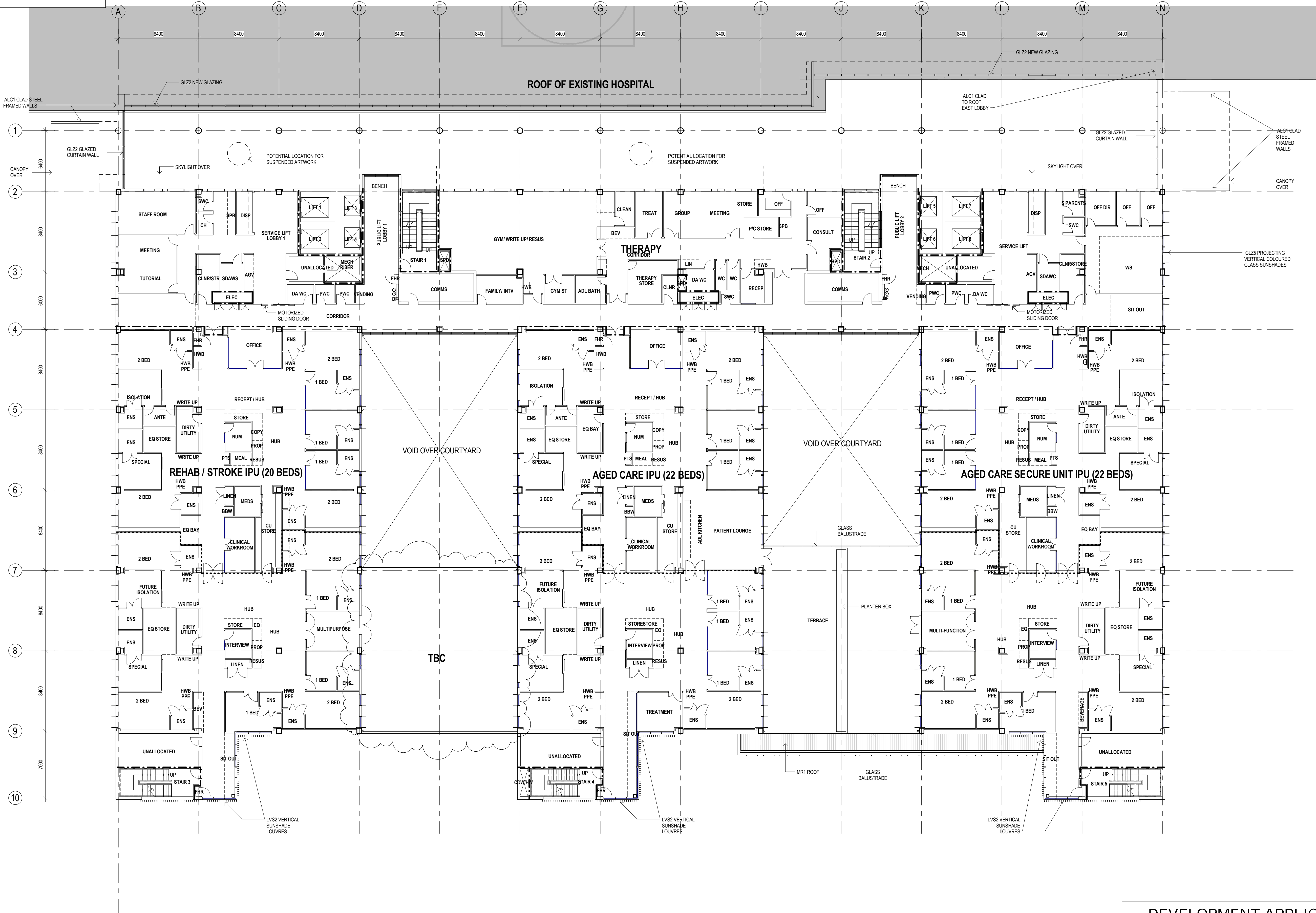
REVISION  
**3**



MATERIAL LEGEND				
CODE	ITEM	COLOUR	FINISH	LOCATION
ROOFING				
MR1	Sheet Metal Roofing	White	Satin	Main Roof, Roof to Level 8 plant rooms, Hospital Street Roof, Canopy roofs
WMR1	Waterproof Membrane Roof topped with Ballast	White Ballast	-	Bunker Roof, Hydraulic plant room roof only.
WMR2	Waterproof Membrane Roof with trafficable paving	Grey or beige paving	paving	Terraces, Sections of Courtyards with concrete slab base.
MC1	Parapet Cappings and Flashings	Dark Grey	Satin	All parapets to Main building, not including Hospital Street Roof and canopies
WDC1	Timber Veneered Cladding	Natural Woodgrain	Clear, Satin	Soffits to all canopies including one side of each vertical section of canopy.
WALLS				
PCC1	Panelized Brickslips cast into Precast Concrete Cladding Panels.	Blue grey blend brick slip Grey Concrete.	Unsealed	General, refer drawings
CM1	Sheet Metal Cladding	Dark Grey	Satin	Spandrels behind LV52 louvres.
ALC1	Aluminium-faced Cladding Panels with integral parapets.	White	Satin	Fascias /Parapets to Hospital Street roof and canopies. Projecting rooms and horizontal shading on upper floors.
ALC2	Aluminium-faced Cladding Panels	Dark grey	Satin	General, refer drawings
LV51	Louvers	Dark Grey	Satin	Level 8 Plant, Level 3 & 4 Plant to South Cores
FENESTRATION				
GLZ1	Glazing Type 1	Glass: Clear with grey tint Frame: Dark Grey	Frame: Satin	General, refer drawings
GLZ2	Curtain Wall Glazing Type 2	Glass: Clear with grey tint Frame: Dark Grey	Frame: Satin	End facades to atrium, facades to north of courtyards and all other facades to courtyards at Levels 3 & 4 only.
GLZ3	Colourback glass spandrels	Glass: Black / Dark Grey Frame: Dark Grey	Frame: Satin	Spandrel panels on facades to north of courtyards and all other facades to courtyards between Levels 3 & 4 only.
GLZ4	Skylight Glazing	Glass: Clear with grey tint Frame: Dark Grey	Frame: Satin	Atrium Roof General, refer drawings
	Window Frames Exterior door frames Exterior door leaves	Dark Grey Dark Grey Grey / Beige	Satin Satin Satin	General, refer drawings General, refer drawings
SHADING				
LV52	Vertical Aluminium Sunshading Louvres	Dark Grey	Satin	South Elevation
GLZ5	Coloured Laminated Glass Sunshading Fins.	Variety of bright colours: Red, Orange, Yellow, Violet, Etc.	Translucent	General, refer drawings
STS1	Exterior Exposed Structural Steel	Dark Grey	Satin	Supports to canopies

PLAN LEGEND	
---	INDICATES FIRE RATED WALL
----	INDICATES SMOKE WALL
■	EXISTING HOSPITAL BUILDING, REFER TO DA9611-9651 FOR WORK IN THAT BUILDING

NOTE:  
INTERNAL LAYOUT AND ROOM  
NAMES ARE INDICATIVE ONLY AND  
ARE SUBJECT TO CHANGE DURING  
DETAILED DESIGN.



DEVELOPMENT APPLICATION

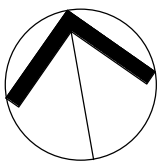
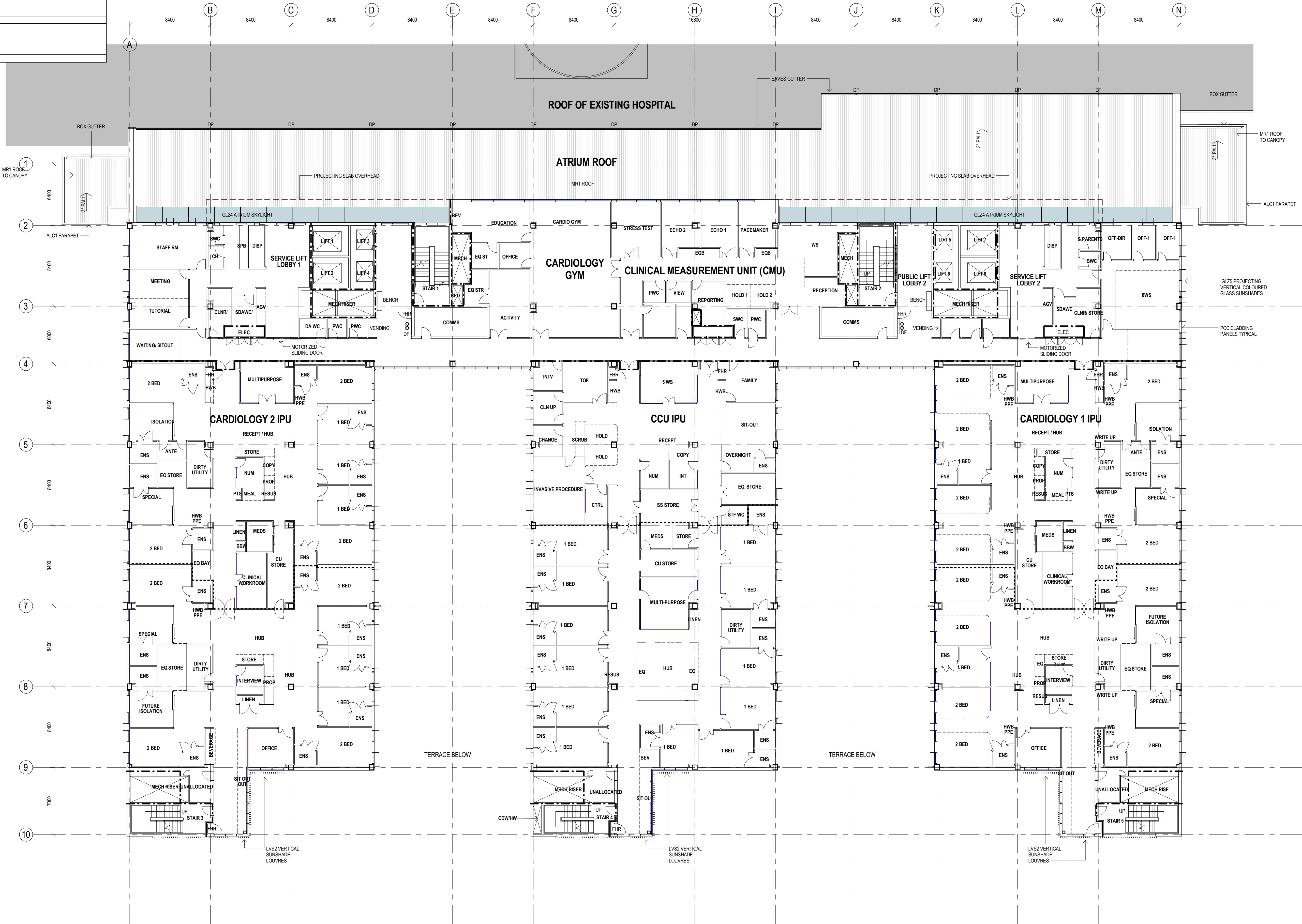
THIS DRAWING IS COPYRIGHT AND THE PROPERTY OF THE CONSULTANT AND MUST NOT BE RETAINED, COPIED OR USED WITHOUT THE PERMISSION OF THE AUTHOR. ALL DIMENSIONS MUST BE CHECKED ON SITE BEFORE COMMENCEMENT OF ANY WORK AND DISCREPANCIES IMMEDIATELY REPORTED TO THE CONSULTANT FOR INTERPRETATION. THIS DRAWING IS TO BE READ IN CONJUNCTION WITH THE OTHER DRAWINGS IN THIS SET AND WITH THE PROJECT SPECIFICATIONS. DO NOT SCALE FROM DRAWINGS. REFER TO GIVEN DIMENSIONS. VARIATIONS TO WORK SHOWN MUST BE CLAIMED AND APPROVED IN WRITING BEFORE PROCEEDING.			KEY PLAN		CONSULTANT		PROJECT MANAGER		PRINCIPAL		PROJECT		ARCHITECTURAL	
									Health Infrastructure		<b>BLACKTOWN MT DRUITT HOSPITAL STAGE 1 EXPANSION &amp; SUB ACUTE PROJECTS</b> BLACKTOWN CAMPUS: BLACKTOWN ROAD, NSW 2148		DRAWING TITLE BSN - BLACKTOWN STAGE 1 NEW BUILD CSB - FLOOR PLAN - LEVEL 5	
					A.C.N. 001 024 095 Skelton Knight Mox Pty. Ltd 100 Littleton Street 26 LUNGA RD NSW 2066 AUSTRALIA Tel: +61 2 9628 2100 Fax: +61 2 9628 2510 Web: www.skmgroup.com.au www.skmgroup.com				Health Western Sydney Local Health District		SCALE (B1) 1 : 200 PROJECT No: NB11472		DRAWING No: BSN-AR-DG-DA9515	
					SKM-S2F is part of the Skelton Knight Mox Group								REVISION	
													3	



MATERIAL LEGEND			
CODE	ITEM	COLOUR	FINISH
ROOFING			
MR1	Sheet Metal Roofing	White	Satin
WMR1	Waterproof Membrane Roof topped with Ballast	White Ballast	-
WMR2	Waterproof Membrane Roof with trafficable paving	Grey or beige paving	paving
MC1	Parapet Cappings and Flashings	Dark Grey	Satin
WC1	Timber Veneered Cladding	Natural Woodgrain	Clear, Satin
WALLS			
PCC1	Panelized Bricks/cast into Precast Concrete Cladding Panels.	Blue grey blend brick slip Grey Concrete.	Unsealed
CM1	Sheet Metal Cladding.	Dark Grey	Satin
ALC1	Aluminium-faced Cladding Panels with integral parapets.	White	Satin
ALC2	Aluminium-faced Cladding Panels	Dark grey	Satin
LVS1	Louvers	Dark Grey	Satin
FENESTRATION			
GLZ1	Glazing Type 1	Glass: Clear with grey tint Frame: Dark Grey	Frame: Satin
GLZ2	Curtain Wall Glazing Type 2	Glass: Clear with grey tint Frame: Dark Grey	Frame: Satin
GLZ3	Colourback glass spandrels	Glass: Black / Dark Grey Frame: Dark Grey	Frame: Satin
GLZ4	Skylight Glazing	Glass: Clear with grey tint Frame: Dark Grey	Frame: Satin
	Window Frames	Dark Grey	Satin
	Exterior door frames	Dark Grey	Satin
	Exterior door leaves	Grey / Beige	Satin
SHADING			
LVS2	Vertical Aluminium Sunshading louvers	Dark Grey	Satin
GLZ5	Coloured Laminated Glass Sunshading Fins.	Variety of bright colours: Red, Orange, Yellow, Violet, Etc.	Translucent
STS1	Exterior Exposed Structural Steel	Dark Grey	Satin

PLAN LEGEND	
---	INDICATES FIRE RATED WALL
----	INDICATES SMOKE WALL
	EXISTING HOSPITAL BUILDING, REFER TO DA9611-9651 FOR WORK IN THAT BUILDING

NOTE:  
INTERNAL LAYOUT AND ROOM  
NAMES ARE INDICATIVE ONLY AND  
ARE SUBJECT TO CHANGE DURING  
DETAILED DESIGN.



DEVELOPMENT APPLICATION

THIS DRAWING IS COPYRIGHT AND THE PROPERTY OF THE CONSULTANT AND MUST NOT BE  
RETAINED, COPIED OR USED WITHOUT THE PERMISSION OF THE AUTHOR.  
ALL DIMENSIONS MUST BE CHECKED ON SITE BEFORE COMMENCEMENT OF ANY WORK AND  
DISCREPANCIES IMMEDIATELY REPORTED TO THE CONSULTANT FOR INTERPRETATION.  
THIS DRAWING IS TO BE READ IN CONJUNCTION WITH THE OTHER DRAWINGS IN THIS SET  
AND WITH THE PROJECT SPECIFICATIONS. DO NOT SCALE FROM DRAWINGS. REFER TO  
GIVEN DIMENSIONS.  
VARIATIONS TO WORK SHOWN MUST BE CLAIMED AND APPROVED IN WRITING BEFORE  
PROCEEDING.

REV	DATE	REWD BY	APPD BY	APPD PDR	AMENDMENT
3	14-08-2012	AC	CY		PART 4 APPLICATION
2	25-07-2012	AC	CY		PART 4 APPLICATION
1	28-06-2012	AC	CY		PART 4 APPLICATION
0	22-06-2012	AC	CY		DRAFT PART 4 APPLICATION

KEY PLAN

CONSULTANT

**SKM S2F**

A.C.N. 001 024 095  
Skelton Knight Mera Pty. Ltd  
100 Littleton Street  
26, LIDGEMORE  
NSW 2058 AUSTRALIA  
Tel: +61 2 9628 2100  
Fax: +61 2 9628 2510  
Web: www.skmgroup.com.au  
www.skmgroup.com

SKM-S2F is part of the Skelton Knight Mera Group

PROJECT MANAGER

**appian**  
group

PRINCIPAL

**NSW** GOVERNMENT  
**Health** Infrastructure  
**NSW** GOVERNMENT  
**Health** Western Sydney  
Local Health District

PROJECT

**BLACKTOWN MT DRUITT HOSPITAL STAGE 1 EXPANSION &  
SUB ACUTE PROJECTS**  
BLACKTOWN CAMPUS: BLACKTOWN ROAD, NSW 2148

ARCHITECTURAL

DRAWING TITLE  
**BSN - BLACKTOWN STAGE 1 NEW BUILD  
CSB - FLOOR PLAN - LEVEL 6**

SCALE ( @B1 ) 1 : 200  
PROJECT No: **NB11472**

DRAWING No:  
**BSN-AR-DG-DA9516**

REVISION  
**3**



MATERIAL LEGEND			
CODE	ITEM	COLOUR	FINISH
ROOFING			
MR1	Sheet Metal Roofing	White	Satin
WMR1	Waterproof Membrane Roof topped with Ballast	White Ballast	-
WMR2	Waterproof Membrane Roof with trafficable paving	Grey or beige paving	paving
WC1	Parapet Cappings and Flashings	Dark Grey	Satin
WDC1	Timber Veneered Cladding	Natural Woodgrain	Clear, Satin
WALLS			
PCC1	Panelized Brickslips cast into Precast Concrete Cladding Panels.	Blue grey blend brick slip	Unsealed
CM1	Sheet Metal Cladding	Dark Grey	Satin
ALC1	Aluminium-faced Cladding Panels with integral parapets.	White	Satin
ALC2	Aluminium-faced Cladding Panels	Dark Grey	Satin
LVS1	Louvers	Dark Grey	Satin
FENESTRATION			
GLZ1	Glazing Type 1	Glass: Clear with grey tint Frame: Dark Grey	Frame: Satin
GLZ2	Curtain Wall Glazing Type 2	Glass: Clear with grey tint Frame: Dark Grey	Frame: Satin
GLZ3	Colourback glass spandrels	Glass: Black / Dark Grey Frame: Dark Grey	Frame: Satin
GLZ4	Skylight Glazing	Glass: Clear with grey tint Frame: Dark Grey	Frame: Satin
	Window Frames	Dark Grey	Satin
	Exterior door frames	Dark Grey	Satin
	Exterior door leaves	Grey / Beige	Satin
SHADING			
LVS2	Vertical Aluminium Sunshading louvers	Dark Grey	Satin
GLZ5	Coloured Laminated Glass Sunshading Fins.	Variety of bright colours: Red, Orange, Yellow, Violet, Etc.	Translucent
STS1	Exterior Exposed Structural Steel	Dark Grey	Satin

PLAN LEGEND

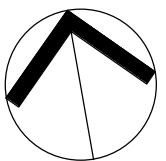
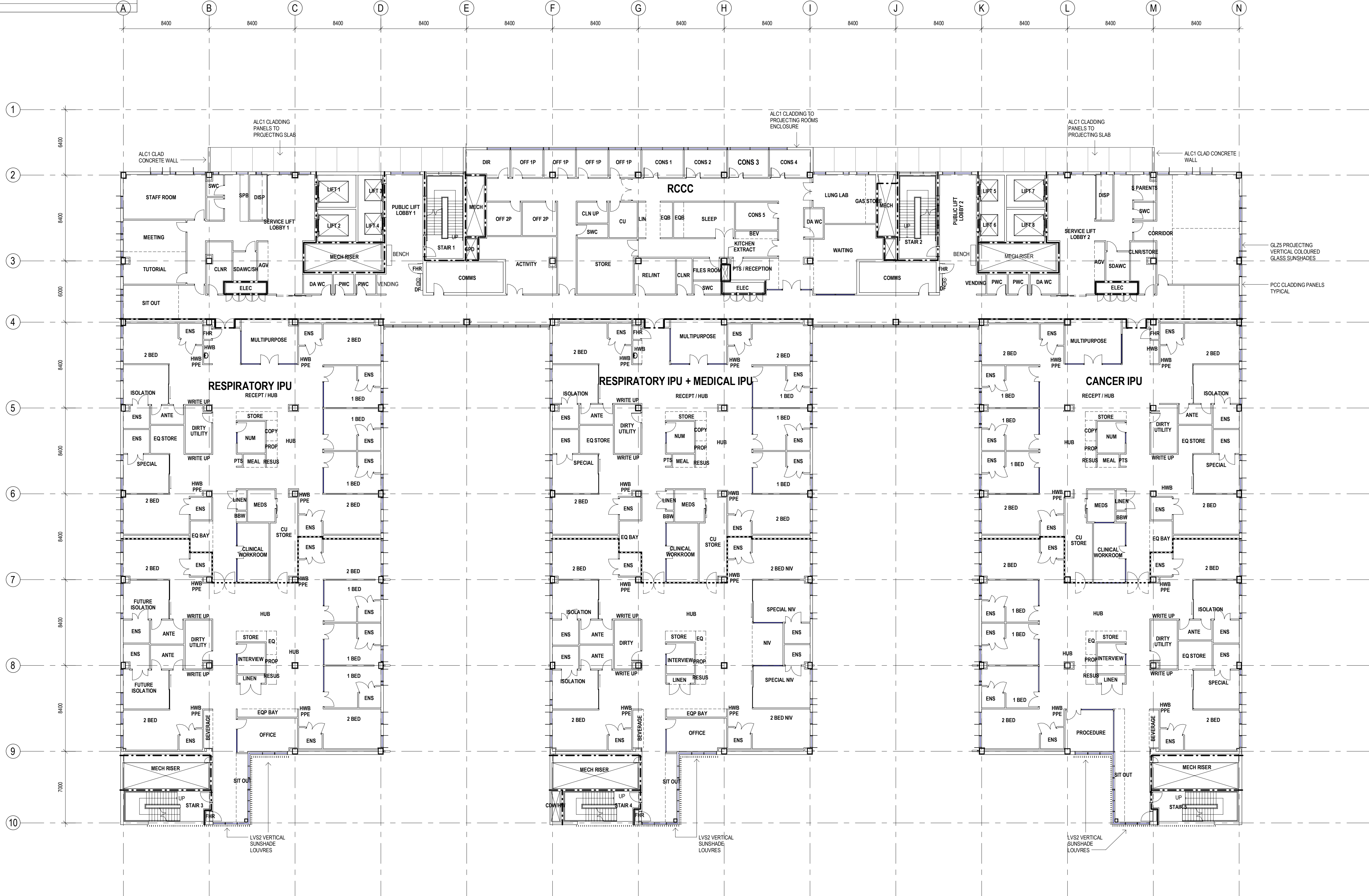
INDICATES FIRE RATED WALL

INDICATES SMOKE WALL

EXISTING HOSPITAL BUILDING, REFER TO DA9611-9651 FOR WORK IN THAT BUILDING

NOTE:

INTERNAL LAYOUT AND ROOM NAMES ARE INDICATIVE ONLY AND ARE SUBJECT TO CHANGE DURING DETAILED DESIGN.



DEVELOPMENT APPLICATION

THIS DRAWING IS COPYRIGHT AND THE PROPERTY OF THE CONSULTANT AND MUST NOT BE RETAINED, COPIED OR USED WITHOUT THE PERMISSION OF THE AUTHOR.

ALL DIMENSIONS MUST BE CHECKED ON SITE BEFORE COMMENCEMENT OF ANY WORK AND DISCREPANCIES IMMEDIATELY REPORTED TO THE CONSULTANT FOR INTERPRETATION.

THIS DRAWING IS TO BE READ IN CONJUNCTION WITH THE OTHER DRAWINGS IN THIS SET AND WITH THE PROJECT SPECIFICATIONS. DO NOT SCALE FROM DRAWINGS. REFER TO GIVEN DIMENSIONS.

VARIATIONS TO WORK SHOWN MUST BE CLAIMED AND APPROVED IN WRITING BEFORE PROCEEDING.

REV	DATE	REWD	BY	APPD	BY	APPD	BY	AMENDMENT
3	14-08-2012	AC	CY					PART 4 APPLICATION
2	25-07-2012	AC	CY					PART 4 APPLICATION
1	28-06-2012	AC	CY					PART 4 APPLICATION
0	22-06-2012	AC	CY					DRAFT PART 4 APPLICATION

KEY PLAN

CONSULTANT



A.C.N. 001 024 095  
Skeeter Knight Mera Pty. Ltd  
100 Collins Street  
26, LOUNGADE  
NSW 2068 AUSTRALIA  
Tel: +61 2 9628 2100  
Fax: +61 2 9628 2510  
Web: www.skmgroup.com.au  
www.skmgroup.com

SKM-S2F is part of the Skeeter Knight Mera Group

PROJECT MANAGER



PRINCIPAL



PROJECT

BLACKTOWN MT DRUITT HOSPITAL STAGE 1 EXPANSION & SUB ACUTE PROJECTS  
BLACKTOWN CAMPUS: BLACKTOWN ROAD, NSW 2148

ARCHITECTURAL

DRAWING TITLE  
BSN - BLACKTOWN STAGE 1 NEW BUILD  
CSB - FLOOR PLAN - LEVEL 7

SCALE (@B1) 1: 200	DRAWING No.	REVISION
PROJECT No. NB11472	BSN-AR-DG-DA9517	3



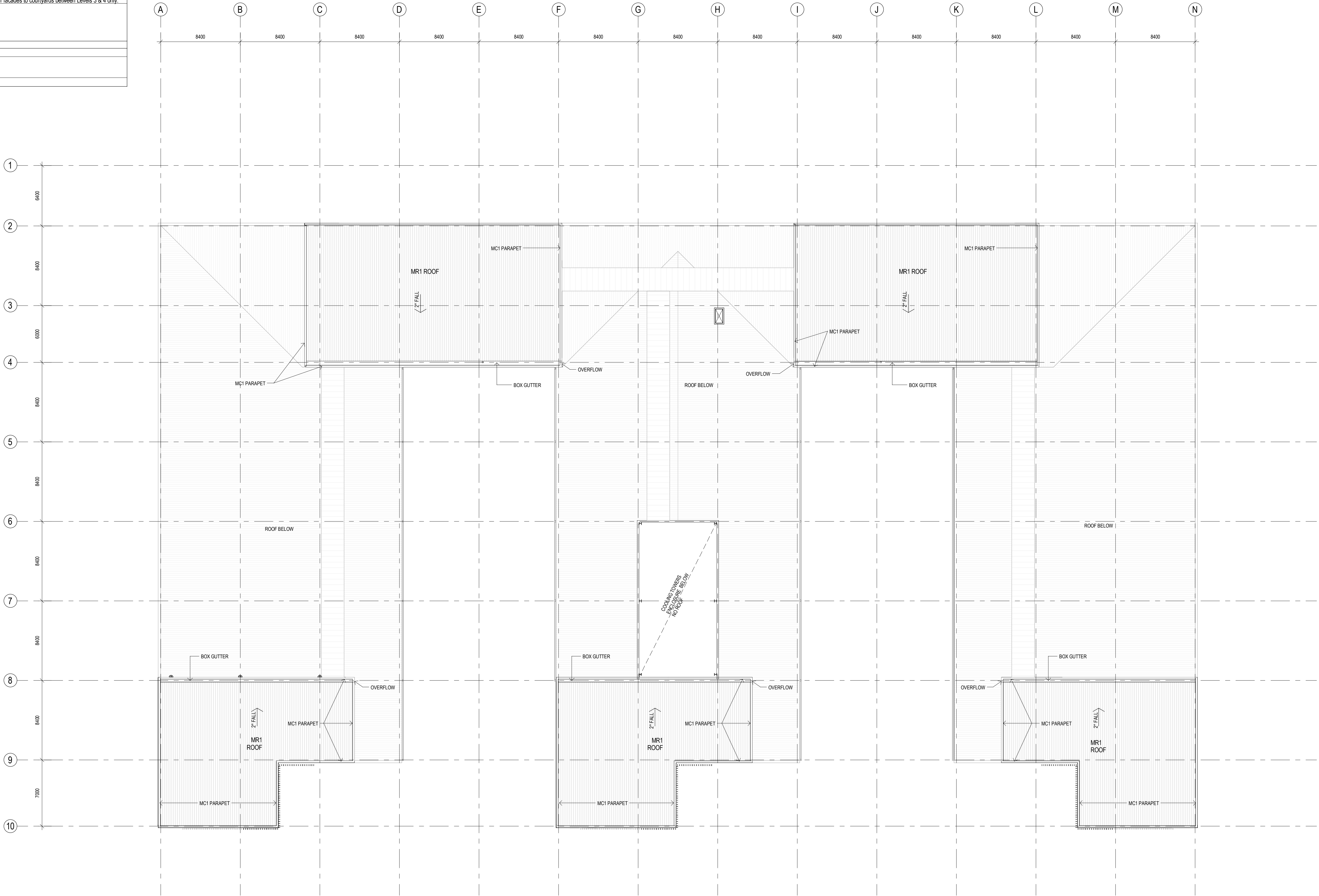




MATERIAL LEGEND			
CODE	ITEM	COLOUR	FINISH
ROOFING			
MR1	Sheet Metal Roofing	White	Satin
WMR1	Waterproof Membrane Roof topped with Ballast	White Ballast	-
WMR2	Waterproof Membrane Roof with trafficable paving	Grey or beige paving	paving
MC1	Parapet Cappings and Flashings	Dark Grey	Satin
WDC1	Timber Veneered Cladding	Natural Woodgrain	Clear, Satin
WALLS			
PCC1	Panelized Brickslips cast into Precast Concrete Cladding Panels.	Blue grey blend brick slip Grey Concrete	Unsealed Satin
CM1	Sheet Metal Cladding	Dark Grey	Satin
ALC1	Aluminium-faced Cladding Panels with integral parapets	White	Satin
ALC2	Aluminium-faced Cladding Panels	Dark grey	Satin
LVS1	Louvers	Dark Grey	Satin
FENESTRATION			
GLZ1	Glazing Type 1	Glass: Clear with grey tint Frame: Dark Grey	Frame: Satin
GLZ2	Curtain Wall Glazing Type 2	Glass: Clear with grey tint Frame: Dark Grey	Frame: Satin
GLZ3	Colourback glass spandrels	Glass: Black / Dark Grey Frame: Dark Grey	Frame: Satin
GLZ4	Skylight Glazing	Glass: Clear with grey tint Frame: Dark Grey	Frame: Satin
SHADING	Window Frames	Dark Grey	Satin
	Exterior door frames	Dark Grey	Satin
	Exterior door leaves	Grey / Beige	Satin
LVS2	Vertical Aluminium Sunshading louvres	Dark Grey	Satin
GLZ5	Coloured Laminated Glass Sunshading Fins.	Variety of bright colours: Red, Orange, Yellow, Violet, Etc.	Translucent
STS1	Exterior Exposed Structural Steel	Dark Grey	Satin

PLAN LEGEND	
---	INDICATES FIRE RATED WALL
----	INDICATES SMOKE WALL
	EXISTING HOSPITAL BUILDING, REFER TO DA201-204 FOR WORK IN THAT BUILDING

NOTE:  
INTERNAL LAYOUT AND ROOM NAMES ARE INDICATIVE ONLY.



THIS DRAWING IS COPYRIGHT AND THE PROPERTY OF THE CONSULTANT AND MUST NOT BE RETAINED, COPIED OR USED WITHOUT THE PERMISSION OF THE AUTHOR.					
ALL DIMENSIONS MUST BE CHECKED ON SITE BEFORE COMMENCEMENT OF ANY WORK AND DISCREPANCIES IMMEDIATELY REPORTED TO THE CONSULTANT FOR INTERPRETATION.					
THIS DRAWING IS TO BE READ IN CONJUNCTION WITH THE OTHER DRAWINGS IN THIS SET AND WITH THE PROJECT SPECIFICATIONS. DO NOT SCALE FROM DRAWINGS. REFER TO GIVEN DIMENSIONS.					
VARIATIONS TO WORK SHOWN MUST BE CLAIMED AND APPROVED IN WRITING BEFORE PROCEEDING.					
REV	DATE	REV'D BY	APP'D BY	APP'D P.D.R.	AMENDMENT
3	25-07-2012	AC	CY		PART 4 APPLICATION
2	17-07-2012	AC	CY		PART 4 APPLICATION
1	28-06-2012	AC	CY		PART 4 APPLICATION
0	22-06-2012	AC	CY		DRAFT PART 4 APPLICATION

#### KEY PLAN

#### CONSULTANT

A.C.N. 001 024 095  
Skelton Knight Mera Pty. Ltd  
100 Littlemore Street  
26 LIDGEMORE  
NSW 2046 AUSTRALIA  
Tel: +61 2 9628 2100  
Fax: +61 2 9628 2510  
Web: www.skmgroup.com.au  
www.skmgroup.com

SKM-S2F is part of the Skelton Knight Mera Group

#### PROJECT MANAGER

#### PRINCIPAL

#### PROJECT

**BLACKTOWN MT DRUITT HOSPITAL STAGE 1 EXPANSION & SUB ACUTE PROJECTS**

BLACKTOWN CAMPUS: BLACKTOWN ROAD, NSW 2148

#### ARCHITECTURAL

DRAWING TITLE  
BSN - BLACKTOWN STAGE 1 NEW BUILD  
CSB - ROOF PLAN

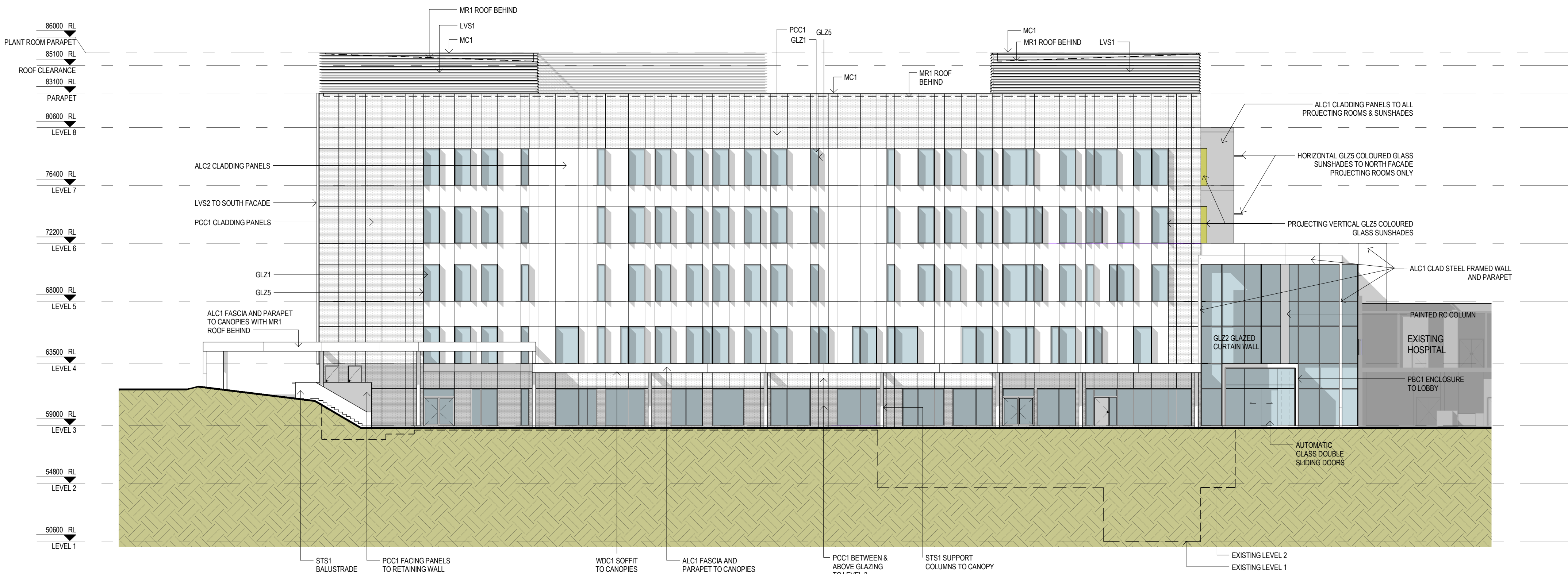
SCALE (B1) 1 : 200

PROJECT No. NB11472

DRAWING No. BSN-AR-DG-DA9519

REVISION  
3





EAST ELEVATION



WEST ELEVATION

MATERIAL LEGEND		COLOUR	FINISH	LOCATION
ROOFING				
MR1	Sheet Metal Roofing	White	Satin	Main Roof, Roof to Level 8 plant rooms, Hospital Street Roof, Canopy roofs
WMR1	Waterproof Membrane Roof topped with Ballast	White Ballast	-	Bunker Roof, Hydraulic plant room roof only.
WMR2	Waterproof Membrane Roof with trafficable paving	Grey or beige paving	paving	Terraces, Sections of Courtyards with concrete slab base.
MC1	Parapet Cappings and Flashings	Dark Grey	Satin	All parapets to Main Building, not including Hospital Street Roof and canopies
WDC1	Timber Veneered Cladding	Natural Woodgrain	Clear, Satin	Soffits to all canopies including one side of each vertical section of canopy.
WALLS				
PCC1	Panelized Blocks/cast into Precast Concrete Cladding Panels.	Blue grey blend brick slip Grey Concrete.	Unsealed	General, refer drawings
CM1	Sheet Metal Cladding.	Dark Grey	Satin	Spandrels behind LVS2 louvers.
ALC1	Aluminium-faced Cladding Panels with integral parapets.	White	Satin	Fascias /Parapets to Hospital Street roof and canopies. Projecting rooms and horizontal shading on upper floors.
ALC2	Aluminium-faced Cladding Panels	Dark grey	Satin	General, refer drawings.
LVS1	Louvers	Dark Grey	Satin	Level 8 Plant, Level 3 & 4 Plant to South Cores
FENESTRATION				
GLZ1	Glazing Type 1	Glass: Clear with grey tint Frame: Dark Grey	Frame: Satin	General, refer drawings.
GLZ2	Curtain Wall Glazing Type 2	Glass: Clear with grey tint Frame: Dark Grey	Frame: Satin	End facades to atrium, facades to north of courtyards and all other facades to courtyards at Levels 3 & 4 only.
GLZ3	Colourback glass spandrels	Glass: Black / Dark Grey Frame: Dark Grey	Frame: Satin	Spandrel panels on facades to north of courtyards and all other facades to courtyards between Levels 3 & 4 only.
GLZ4	Skylight Glazing	Glass: Clear with grey tint Frame: Dark Grey	Frame: Satin	Atrium Roof
SHADING	LVS2	Vertical Aluminium Sunshading louvers	Dark Grey	Satin
	GLZ5	Coloured Laminated Glass Sunshading Fins.	Variety of bright colours: Red, Orange, Yellow, Violet, Etc.	General, refer drawings
	STS1	Exterior Exposed Structural Steel	Dark Grey	Translucent Semi Gloss
				General, refer drawings
				Supports to canopies

LEGEND

EXISTING HOSPITAL BUILDING, REFER TO DA8611-9651 FOR WORK IN THAT BUILDING

DEVELOPMENT APPLICATION

KEY PLAN

CONSULTANT

PROJECT MANAGER

PRINCIPAL

PROJECT

ARCHITECTURAL

THIS DRAWING IS COPYRIGHT AND THE PROPERTY OF THE CONSULTANT AND MUST NOT BE RETAINED, COPIED OR USED WITHOUT THE PERMISSION OF THE AUTHOR.					
ALL DIMENSIONS MUST BE CHECKED ON SITE BEFORE COMMENCEMENT OF ANY WORK AND DISCREPANCIES IMMEDIATELY REPORTED TO THE CONSULTANT FOR INTERPRETATION.					
THIS DRAWING IS TO BE READ IN CONJUNCTION WITH THE OTHER DRAWINGS IN THIS SET AND WITH THE PROJECT SPECIFICATIONS. DO NOT SCALE FROM DRAWINGS. REFER TO GIVEN DIMENSIONS.					
VARIATIONS TO WORK SHOWN MUST BE CLAIMED AND APPROVED IN WRITING BEFORE PROCEEDING.					
REV	DATE	REV'D BY	APP'D BY	APP'D P.D.R.	AMENDMENT
2	17-07-2012	AC	CY		PART 4 APPLICATION
1	28-06-2012	AC	CY		PART 4 APPLICATION
0	22-06-2012	AC	CY		DRAFT PART 4 APPLICATION

**SKM S2F**

A.C.N. 001 024 095  
Skeeler Knight Merz Pty. Ltd  
100 CHURCH STREET  
26 LIVERPOOL  
NSW 2060 AUSTRALIA  
Tel: +61 2 9628 2100  
Fax: +61 2 9628 2510  
Web: www.skmgroup.com.au  
www.skmgroup.com

SKM-S2F is part of the Skeeler Knight Merz Group

**appian group**

**NSW GOVERNMENT**

**Health Infrastructure**

**NSW GOVERNMENT**

**Health Western Sydney Local Health District**

**BLACKTOWN MT DRUITT HOSPITAL STAGE 1 EXPANSION & SUB ACUTE PROJECTS**

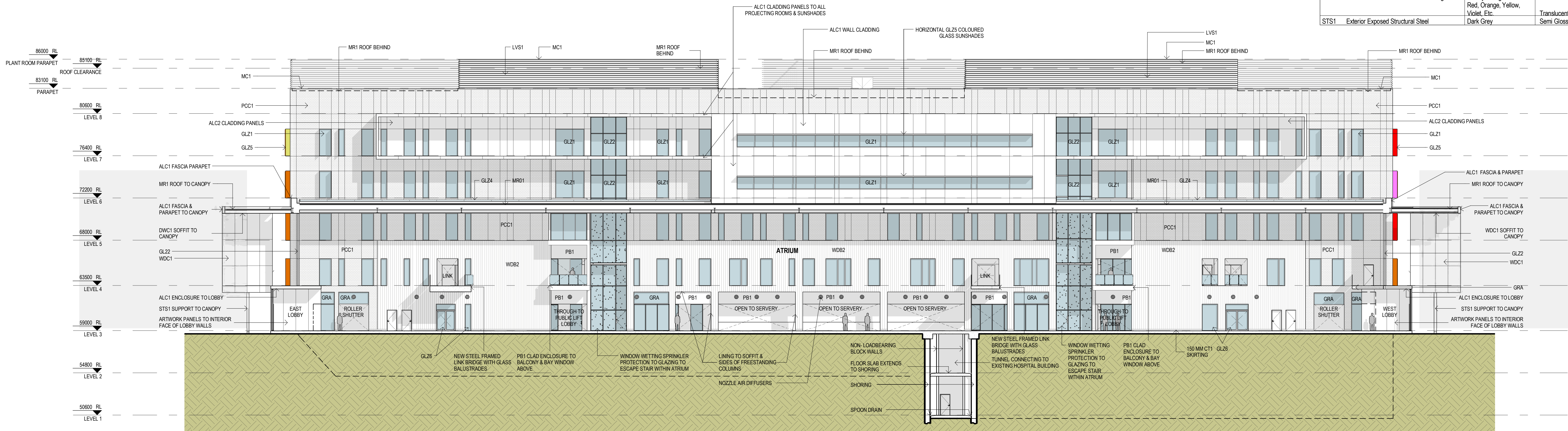
BLACKTOWN CAMPUS: BLACKTOWN ROAD, NSW 2148

DRAWING TITLE  
BSN - BLACKTOWN STAGE 1 NEW BUILD  
CSB - ELEVATIONS - SHEET 1

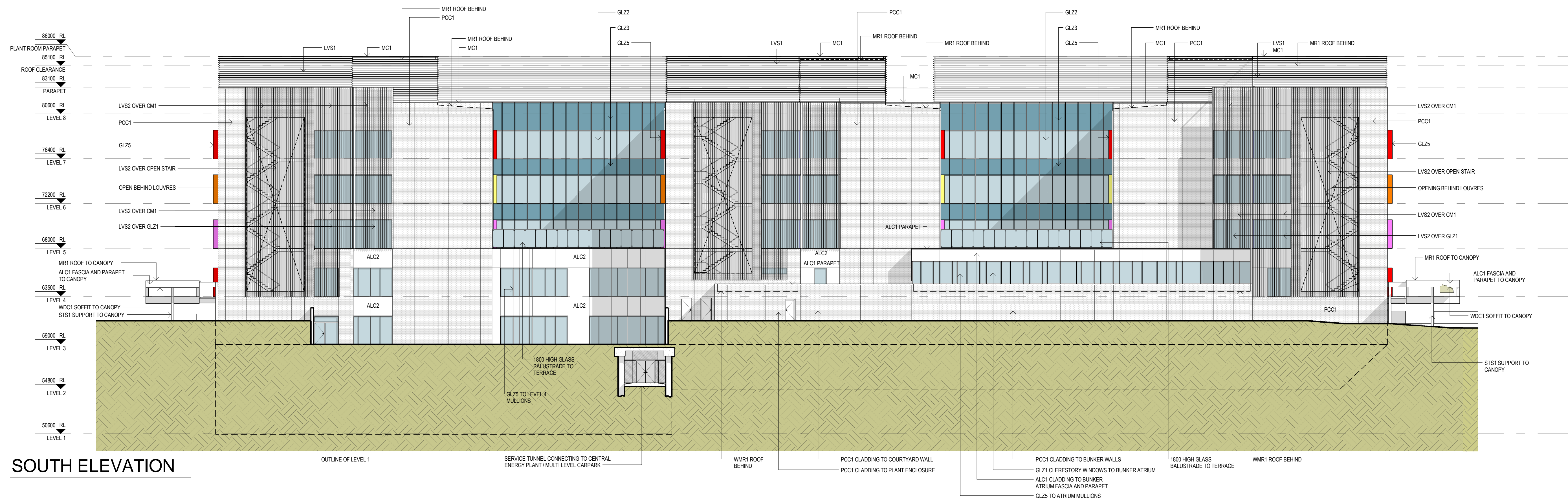
SCALE (B1) 1 : 200	DRAWING No.	REVISION
PROJECT No. NB11472	BSN-AR-DG-DA9541	2



MATERIAL LEGEND			
CODE	ITEM	COLOUR	FINISH
ROOFING			
MR1	Sheet Metal Roofing	White	Satin
WMR1	Waterproof Membrane Roof topped with Ballast	White Ballast	-
WMR2	Waterproof Membrane Roof with trafficable paving	Grey or beige paving	paving
MC1	Parapet Cappings and Flashings	Dark Grey	Satin
WDC1	Timber Veneered Cladding	Natural Woodgrain	Clear, Satin
WALLS			
PCC1	Panelized Bricks/cast into Precast Concrete Cladding Panels	Blue grey blend brick slip Grey Concrete	Unsealed
CM1	Sheet Metal Cladding	Dark Grey	Satin
ALC1	Aluminium-faced Cladding Panels with integral parapets	White	Satin
ALC2	Aluminium-faced Cladding Panels	Dark grey	Satin
LVS1	Louvers	Dark Grey	Satin
FENESTRATION			
GLZ1	Glazing Type 1	Glass: Clear with grey tint Frame: Dark Grey	Frame: Satin
GLZ2	Curtain Wall Glazing Type 2	Glass: Clear with grey tint Frame: Dark Grey	Frame: Satin
GLZ3	Colourback glass spandrels	Glass: Black / Dark Grey Frame: Dark Grey	Frame: Satin
GLZ4	Skylight Glazing	Glass: Clear with grey tint Frame: Dark Grey	Frame: Satin
	Window Frames	Dark Grey	Satin
	Exterior door frames	Dark Grey	Satin
	Exterior door leaves	Grey / Beige	Satin
SHADING			
LVS2	Vertical Aluminium Sunshading louvers	Dark Grey	Satin
GLZ5	Coloured Laminated Glass Sunshading Fins	Variety of bright colours: Red, Orange, Yellow, Violet, Etc.	Translucent
STS1	Exterior Exposed Structural Steel	Dark Grey	Satin



NORTH ELEVATION



SOUTH ELEVATION

DEVELOPMENT APPLICATION

THIS DRAWING IS COPYRIGHT AND THE PROPERTY OF THE CONSULTANT AND MUST NOT BE RETAINED, COPIED OR USED WITHOUT THE PERMISSION OF THE AUTHOR.  
ALL DIMENSIONS MUST BE CHECKED ON SITE BEFORE COMMENCEMENT OF ANY WORK AND DISCREPANCIES IMMEDIATELY REPORTED TO THE CONSULTANT FOR INTERPRETATION.  
THIS DRAWING IS TO BE READ IN CONJUNCTION WITH THE OTHER DRAWINGS IN THIS SET AND WITH THE PROJECT SPECIFICATIONS. DO NOT SCALE FROM DRAWINGS. REFER TO GIVEN DIMENSIONS.  
VARIATIONS TO WORK SHOWN MUST BE CLAIMED AND APPROVED IN WRITING BEFORE PROCEEDING.

REV	DATE	REVISED BY	APPROVED BY	AMENDMENT
2	17-07-2012	AC	CY	PART 4 APPLICATION
1	28-06-2012	AC	CY	PART 4 APPLICATION
0	22-06-2012	AC	CY	DRAFT PART 4 APPLICATION

KEY PLAN

CONSULTANT



PROJECT MANAGER



PRINCIPAL



PROJECT

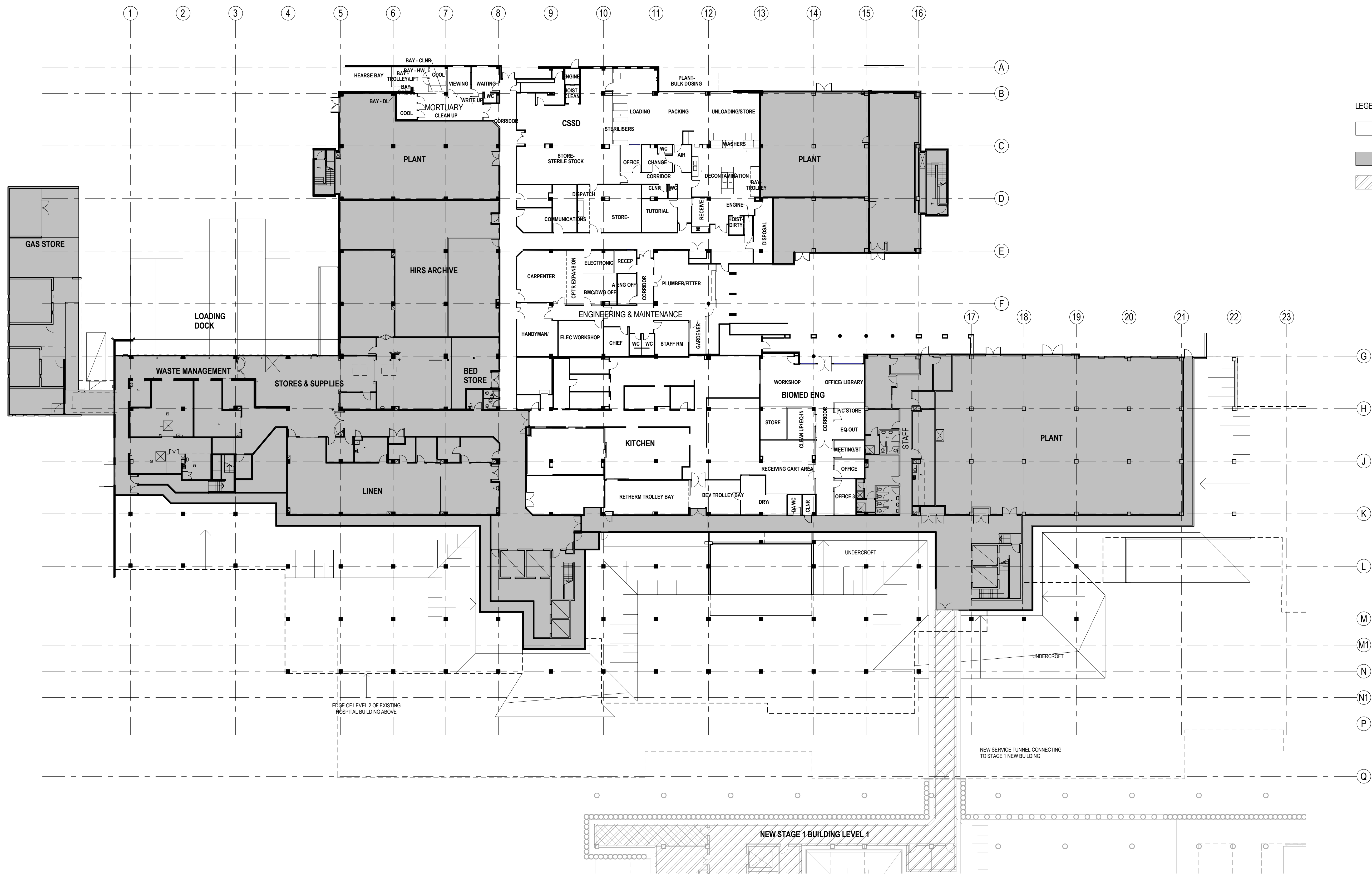
BLACKTOWN MT DRUITT HOSPITAL STAGE 1 EXPANSION & SUB ACUTE PROJECTS  
BLACKTOWN CAMPUS: BLACKTOWN ROAD, NSW 2148

ARCHITECTURAL

DRAWING TITLE  
BSN - BLACKTOWN STAGE 1 NEW BUILD  
CSB - ELEVATIONS - SHEET 2

SCALE (B1) 1 : 200	DRAWING NO.	REVISION
PROJECT NO. NB11472	BSN-AR-DG-DA9542	2



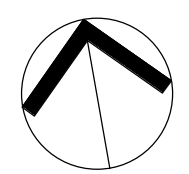


**LEGEND**

AREA TO BE REFURBISHED - REFURBISHMENT COMPRISES STRIP-OUT OF EXISTING PARTITIONS, CEILINGS, FLOOR FINISHES & SERVICES, FOLLOWED BY A COMPREHENSIVE FIT-OUT OF NEW CLINICAL AREAS AS SHOWN.

EXISTING AREA NOT PART OF THIS REFURBISHMENT

NEW HOSPITAL BUILDING. REFER TO DRAWING DA9511-9542 FOR DETAIL



## DEVELOPMENT APPLICATION

### KEY PLAN

### CONSULTANT

**SKM S2F**

A.C.N. 001 024 095  
Skelton Knight Merz Pty. Ltd  
100 Liverpool Street  
NSW 2000 AUSTRALIA  
Tel: +61 2 9628 2500  
Fax: +61 2 9628 2510  
Web: www.skmgroup.com.au  
www.skmgroup.com

SKM-S2F is part of the Skelton Knight Merz Group

### PROJECT MANAGER



### PRINCIPAL



### PROJECT

**BLACKTOWN MT DRUITT HOSPITAL STAGE 1 EXPANSION & SUB ACUTE PROJECTS**  
BLACKTOWN CAMPUS: BLACKTOWN ROAD, NSW 2148

### ARCHITECTURAL

DRAWING TITLE  
**BSR - BLACKTOWN STAGE 1 - REFURBISHMENT EXISTING HOSPITAL - FLOOR PLAN - LEVEL 1**

SCALE (B1) 1 : 250	DRAWING No.	REVISION
PROJECT No. <b>NB11472</b>	<b>BSR-AR-DG-DA9611</b>	<b>2</b>

THIS DRAWING IS COPYRIGHT AND THE PROPERTY OF THE CONSULTANT AND MUST NOT BE RETAINED, COPIED OR USED WITHOUT THE PERMISSION OF THE AUTHOR.

ALL DIMENSIONS MUST BE CHECKED ON SITE BEFORE COMMENCEMENT OF ANY WORK AND DISCREPANCIES IMMEDIATELY REPORTED TO THE CONSULTANT FOR INTERPRETATION.

THIS DRAWING IS TO BE READ IN CONJUNCTION WITH THE OTHER DRAWINGS IN THIS SET AND WITH THE PROJECT SPECIFICATIONS. DO NOT SCALE FROM DRAWINGS. REFER TO GIVEN DIMENSIONS.

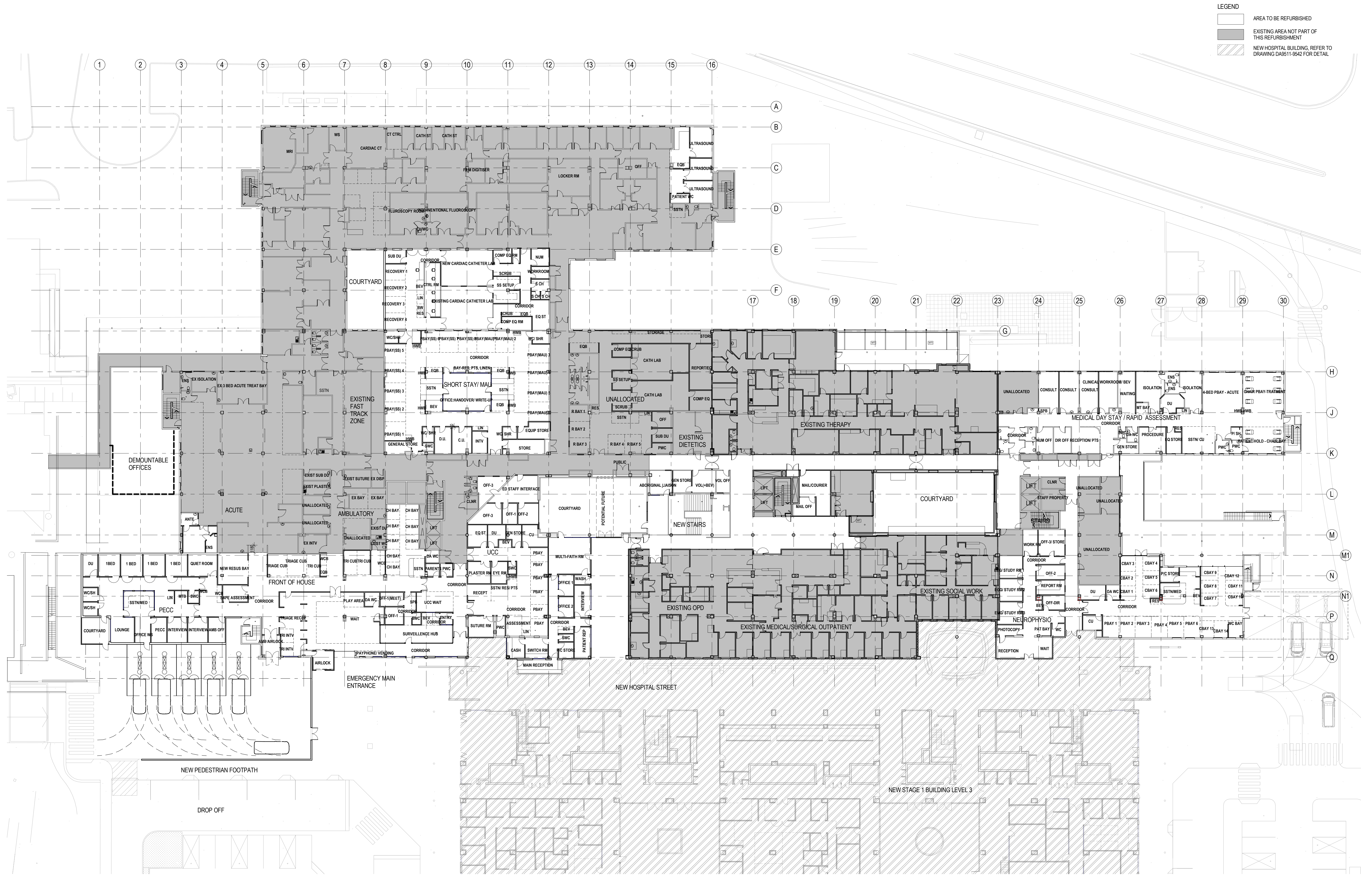
VARIATIONS TO WORK SHOWN MUST BE CLAIMED AND APPROVED IN WRITING BEFORE PROCEEDING.

REV	DATE	REVISED BY	APPROVED BY	AMENDMENT
2	14-08-2012	AC	CY	PART 4 APPLICATION
1	28-06-2012	AC	CY	PART 4 APPLICATION
0	22-06-2012	AC	CY	DRAFT PART 4 APPLICATION









DEVELOPMENT APPLICATION

THIS DRAWING IS COPYRIGHT AND THE PROPERTY OF THE CONSULTANT AND MUST NOT BE RETAINED, COPIED OR USED WITHOUT THE PERMISSION OF THE AUTHOR.  
ALL DIMENSIONS MUST BE CHECKED ON SITE BEFORE COMMENCEMENT OF ANY WORK AND DISCREPANCIES IMMEDIATELY REPORTED TO THE CONSULTANT FOR INTERPRETATION.  
THIS DRAWING IS TO BE READ IN CONJUNCTION WITH THE OTHER DRAWINGS IN THIS SET AND WITH THE PROJECT SPECIFICATIONS. DO NOT SCALE FROM DRAWINGS. REFER TO GIVEN DIMENSIONS.  
VARIATIONS TO WORK SHOWN MUST BE CLAIMED AND APPROVED IN WRITING BEFORE PROCEEDING.

REV	DATE	REVISED BY	APPROVED BY	AMENDMENT
1	28-06-2012	AC	CY	PART 4 APPLICATION
0	22-06-2012	AC	CY	DRAFT PART 4 APPLICATION

KEY PLAN

CONSULTANT



PROJECT MANAGER



PRINCIPAL



PROJECT

**BLACKTOWN MT DRUITT HOSPITAL STAGE 1 EXPANSION & SUB ACUTE PROJECTS**  
BLACKTOWN CAMPUS: BLACKTOWN ROAD, NSW 2148

ARCHITECTURAL

DRAWING TITLE  
**BSR - BLACKTOWN STAGE 1 - REFURBISHMENT  
EXISTING HOSPITAL - FLOOR PLAN - LEVEL 3**

SCALE ( @B1 ) 1 : 250	DRAWING No.	REVISION
PROJECT No. NB11472	BSR-AR-DG-DA9613	1