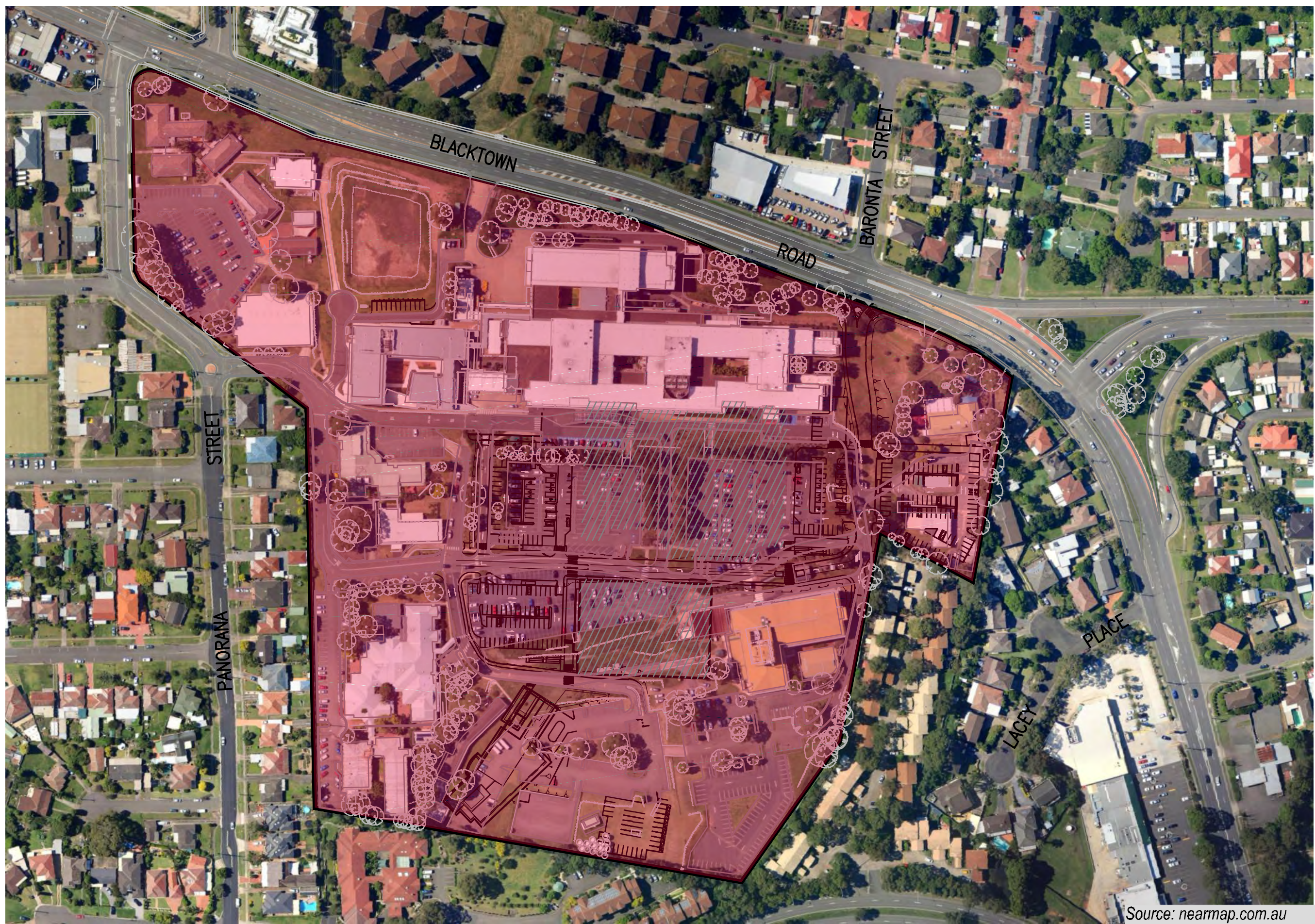


BLACKTOWN HOSPITAL

CIVIL WORKS DRAWINGS



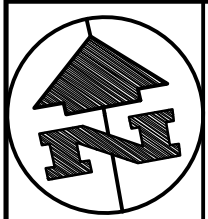
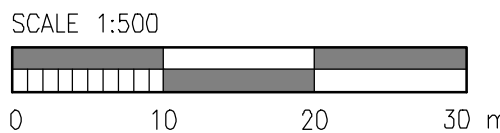
LOCATION PLAN
SCALE: NTS

DRAWING LISTS

DRAWING No.	DRAWING TITLE
BIN-CV-DG-DA0000	COVER SHEET
BIN-CV-DG-DA0001	GENERAL NOTES
BIN-CV-DG-DA0051	OVERALL SITE PLAN
BIN-CV-DG-DA0101	GENERAL ARRANGEMENT PLAN SHEET 1 OF 2
BIN-CV-DG-DA0102	GENERAL ARRANGEMENT PLAN SHEET 2 OF 2
BIN-CV-DG-DA0221	PAVEMENT LAYOUT PLAN SHEET 1 OF 6
BIN-CV-DG-DA0222	PAVEMENT LAYOUT PLAN SHEET 2 OF 6
BIN-CV-DG-DA0223	PAVEMENT LAYOUT PLAN SHEET 3 OF 6
BIN-CV-DG-DA0224	PAVEMENT LAYOUT PLAN SHEET 4 OF 6
BIN-CV-DG-DA0225	PAVEMENT LAYOUT PLAN SHEET 5 OF 6
BIN-CV-DG-DA0226	PAVEMENT LAYOUT PLAN SHEET 6 OF 6
BIN-CV-DG-DA0403	P11 CARPARK BULK EARTHWORKS PLAN
BIN-CV-DG-DA0404	NEW BUILD BULK EARTHWORKS PLAN
BIN-CV-DG-DA0455	P11 CARPARK BULK EARTHWORKS SECTIONS SHEET 1 OF 2
BIN-CV-DG-DA0456	P11 CARPARK BULK EARTHWORKS SECTIONS SHEET 2 OF 2
BIN-CV-DG-DA0457	NEW BUILD CARPARK EARTHWORKS SECTIONS SHEET 1 OF 2
BIN-CV-DG-DA0458	NEW BUILD CARPARK EARTHWORKS SECTIONS SHEET 2 OF 2



CONTRACTOR SHALL CALL;
DIAL BEFORE YOU
DIG 1100
PRIOR TO COMMENCEMENT OF WORK TO OBTAIN ALL CURRENT
SERVICE AUTHORITY PLANS



DO NOT SCALE DRAWINGS, USE FIGURED DIMENSIONS
REFER COVER SHEET FOR NOTES UNLESS NOTED OTHERWISE

REV.	DATE	BY	CHKD.	APPD.	APPD.	AMENDMENT
1	17.08.12	L. JONES	A. JONES			ISSUED FOR DEVELOPMENT APPLICATION

CONSULTANT

Date generated
Drawn
L. JONES
Checked
A. JONES

Design
L. JONES
Approved
L. JONES

Structural & Civil
Engineering Consultant



RobertBirdGroup

SYDNEY OFFICE:
Robert Bird Group Pty Ltd
PO Box 438, Australia Square,
Sydney NSW 1215
Level 5
9 Castlereagh St, Sydney NSW
Ph: (02) 8246 3200
Fax: (02) 8246 3201
A/CN: C/O 580 216
Web Site: www.robertbird.com

PROJECT MANAGER



PRINCIPAL



PROJECT

**BLACKTOWN MT DRUITT HOSPITAL STAGE 1 EXPANSION AND
SUB ACUTE BEDS PROJECTS**
BLACKTOWN CAMPUS: BLACKTOWN ROAD, NSW2148
MT DRUITT CAMPUS: 75 RAILWAY STREET, NSW2770

CIVIL

DRAWING TITLE
**BIN-BLACKTOWN INFRASTRUCTURE
COVER SHEET**

SCALE (B1)	AS NOTED	DRAWING No.	REVISION
PROJECT No.	NB11472	DRAWING No.	1

1. ALL DIMENSIONS SHOWN ON THE PROJECT DRAWINGS ARE IN METRES UNLESS NOTED OTHERWISE.
2. ALL LEVELS ARE TO AUSTRALIAN HEIGHT DATUM (A.H.D.).
3. ALL PROPOSED CIVIL WORKS DESIGNED IN ACCORDANCE WITH AUSTRALIAN STANDARDS :
 - AS 1289 METHODS OF TESTING SOILS FOR ENGINEERING PURPOSES
 - AS 3798 GUIDELINES ON EARTHWORKS FOR COMMERCIAL AND RESIDENTIAL DEVELOPMENTS
 - PAVEMENT DESIGN - 'APRG PROJECT NO. 21 - A GUIDE TO THE DESIGN OF NEW PAVEMENT AND LIGHT TRAFFIC'
 - AUSTRADGS GUIDE TO TRAFFIC ENGINEERING PRACTICE
 - AS 2890.1 2004 PARKING FACILITIES - OFF STREET PARKING
 - AS 1742 PARTS 1 TO 14 TRAFFIC SIGNALS AND TRAFFIC CONTROL DEVICES
 - AS 1348 GLOSSARY OF TERMS ROADS AND TRAFFIC ENGINEERING
 - AS 3600 CONCRETE STRUCTURES
 - AS 1428 DESIGN FOR ACCESS AND MOBILITY

1. THESE NOTES SHALL BE READ IN CONJUNCTION WITH:
 - A. GENERAL NOTES AND DISCLAIMERS FOR THE PROJECT
 - B. EROSION AND SEDIMENT CONTROL NOTES FOR THE PROJECT, AND
 - C. SPECIFICATIONS FOR THE PROJECT.
2. THE CONTRACTOR IS RESPONSIBLE FOR THE REMOVAL, COMPACTION AND DISPOSAL OF ALL EXCAVATED MATERIAL.
3. THE CONTRACTOR IS RESPONSIBLE FOR ENGAGING A GEOTECHNICAL ENGINEER TO UNDERTAKE THE FOLLOWING:
 - A. CARRY OUT LEVEL 1 SUPERVISION FOR ALL EARTHWORKS IN ACCORDANCE WITH AUSTRALIAN STANDARD 3798-2007
 - B. TO VERIFY THE STABILITY OF ALL BATTERS AS EXCAVATION PROCEEDS, AND
 - C. TO DESIGN ALL TEMPORARY BATTERS AND TEMPORARY SHORING.
 - D. VERIFY THE STABILITY AND SUITABILITY OF EXCAVATIONS AND/OR FILLING, PARTICULARLY WITH RESPECT TO EFFECTS ON EXISTING BUILDINGS OR STRUCTURES.
 - E. TO CONFIRM THE ALLOWABLE BEARING CAPACITY OF FOUNDATION SOILS FOR RETAINING STRUCTURES.
4. ALL EARTHWORKS AREAS ARE TO BE LEFT IN A FREE DRAINING STATE.

1. THESE NOTES SHALL BE READ IN CONJUNCTION WITH:
 - A. GENERAL NOTES AND DISCLAIMERS FOR THE PROJECT
 - B. PAVEMENT NOTES FOR THE PROJECT, AND
 - C. SIGNS AND PAVEMENT MARKING NOTES FOR THE PROJECT.
2. PAVEMENT SURFACING SHALL BE IN ACCORDANCE WITH APRG REPORT DESIGN OF NEW PAVEMENTS FOR LIGHT TRAFFIC'.
3. ALL NEW WORK SHALL NEATLY JOIN TO AND MATCH EXISTING WORK

THE CIVIL DOCUMENTATION HAS BEEN PREPARED BASED ON GEOTECHNICAL INVESTIGATION UNDERTAKEN BY COFFEY GEOTECHNICS – GEOTECHNICAL INVESTIGATION AND PRELIMINARY CONTAMINATION ASSESSMENT PROPOSED ADDITIONS TO BLACKTOWN HOSPITAL, BLACKTOWN FOR NSW HEALTH INFRASTRUCTURE NSW GEOTLCOV24207AB-AB DATED 10 MAY 2012.

1. OTHER CONSULTANTS ARE RESPONSIBLE FOR THE COORDINATION OF ALL EXISTING AND PROPOSED UTILITY SERVICES FOR THIS PROJECT.

1. REFER TO ROBERT BIRD GROUP (RBG) STRUCTURAL DRAWINGS DETAILS.

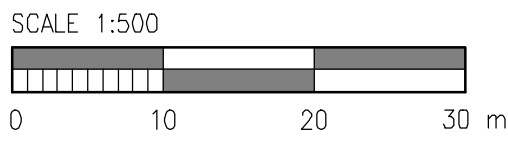
1. ALL WORK SHALL BE GENERALLY CARRIED OUT IN ACCORDANCE WITH:
 - (A) LOCAL AUTHORITY REQUIREMENTS,
 - (B) EPA – POLLUTION CONTROL MANUAL FOR URBAN STORMWATER,
 - (C) DEPARTMENT OF CONSERVATION AND LAND MANAGEMENT MANUAL—"URBAN EROSION & SEDIMENT CONTROL".
 - (D) LANDCOM – MANAGING URBAN STORMWATER – SOILS AND CONSTRUCTION
2. EROSION AND SEDIMENT CONTROL DRAWINGS AND NOTES ARE PROVIDED FOR THE WHOLE OF THE WORKS. SHOULD THE CONTRACTOR STAGE THESE WORKS THEN THE DESIGN MAY REQUIRE TO BE MODIFIED. VARIATION TO THESE DETAILS MAY REQUIRE TO BE APPROVED BY THE RELEVANT AUTHORITIES. THE EROSION AND SEDIMENT CONTROL PLAN SHALL BE IMPLEMENTED AND ADOPTED TO MEET THE VARYING SITUATIONS AS WORK ON SITE PROGRESSES.
3. MAINTAIN ALL EROSION AND SEDIMENT CONTROL DEVICES TO THE SATISFACTION OF THE MANAGING CONTRACTOR AND THE LOCAL AUTHORITY.
4. WHEN STORMWATER PITS ARE CONSTRUCTED PREVENT SITE RUNOFF ENTERING THE PITS UNLESS SILT FENCES ARE ERECTED AROUND PITS.
5. MINIMIZE THE AREA OF SITE BEING DISTURBED AT ANY ONE TIME.
6. PROTECT ALL STOCKPILES OF MATERIALS FROM SCOUR AND EROSION. DO NOT STOCKPILE LOOSE MATERIALS IN ROADWAYS, NEAR DRAINAGE PITS OR IN WATERCOURSES.
7. ALL SOIL AND WATER CONTROL MEASURES ARE TO BE PUT BACK IN PLACE AT THE END OF EACH WORKING DAY, AND MODIFIED TO BEST SUIT SITE CONDITIONS.
8. CONTROL WATER FROM UPSTREAM OF THE SITE SUCH THAT IT DOES NOT ENTER THE DISTURBED SITE.
9. ALL CONSTRUCTION VEHICLES SHALL ENTER AND EXIT THE SITE VIA THE APPROVED CONSTRUCTION ENTRY/EXIT ROUTE.
10. ALL VEHICLES LEAVING THE SITE SHALL BE CLEANED AND INSPECTED BEFORE LEAVING.
11. MAINTAIN ALL STORMWATER PIPES AND PITS CLEAR OF DEBRIS AND SEDIMENT. INSPECT STORMWATER SYSTEM AND CLEAN OUT AFTER EACH STORM EVENT.
12. CLEAN OUT ALL EROSION AND SEDIMENT CONTROL DEVICES AFTER EACH STORM EVENT.
13. ALL DISTURBED AREAS SHALL BE REVEGETATED AS SOON AS THE RELEVANT WORKS HAVE BEEN COMPLETED.
14. KERB INLET SOCKS (OR OTHER MEASURE) TO BE PROVIDED ON ALL INLET PITS IMMEDIATELY DOWNSTREAM OF CONSTRUCTION ACTIVITIES OR STOCKPILES.


THE CIVIL DOCUMENTATION HAS BEEN PREPARED BASED ON SURVEY PREPARED BY CRAIG & RHODES DETAIL SURVEY & UNDERGROUND SERVICES LOCATIONS OVER BLACKTOWN DISTRICT HOSPITAL FOR HEALTH INFRASTRUCTURE NSW DRAWINGS 23910T02 ISSUE 05 DATED 8 APRIL 2012. THIS IS A COMPILATION OF THE TOPOGRAPHICAL SURVEY UNDERTAKE BY CRAIG & RHODES AND SERVICES INVESTIGATION BY DUDS.

INVESTIGATION HAS ALSO BEEN UNDERTAKEN BY DUDS ON 3 MAY 2012 OF THE TELSTRA SERVICES WITHIN THE FOOTWAY OF BLACKTOWN ROAD IN THE AREA OF THE TEMPORARY ENTRY CROSSINGS AND ON 15 MAY 2012 OF THE IT COMMUNICATIONS AND FIBRE OPTIC CABLING ADJACENT TO THE PROPOSED MENTAL HEALTH UNIT.

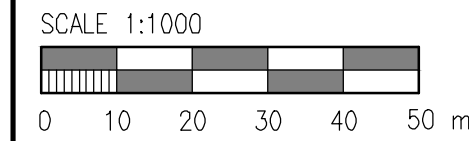
INVESTIGATION HAS ALSO BEEN UNDERTAKEN BY STOWE ELECTRICAL AS THE LEVEL 3 DESIGNER OF THE HIGH AND LOW VOLTAGE NETWORK. THIS INFORMATION IS PROVIDED AS PART OF THE SINCLAIR KNIGHT MERZ ELECTRICAL PACKAGE OF DOCUMENTS.

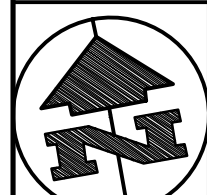
1. GENERALLY PAVEMENT MARKING SHALL BE THERMOPLASTIC TYPE LINEMARKING PAINT IN ACCORDANCE WITH RMS "INTERIM GUIDE TO SIGNS AND MARKINGS" AND WHERE APPLICABLE A.S. 1742.2 UNLESS OTHERWISE APPROVED ON THE ENGINEERING PLANS.
2. THE RMS DOCUMENT SHALL SUPERSEDE A.S. 1742.2 WHERE DISCREPANCIES BETWEEN THE DOCUMENTS OCCUR.
3. SIGHT DISTANCE WARRANTS SHALL BE IN ACCORDANCE WITH AUSTRADOS AND WHERE ON CLASSIFIED ROADS THE RMS REQUIREMENTS FOR CENTRAL PAVEMENT MARKING.
4. LINE TYPE WARRANTS SHALL BE IN ACCORDANCE WITH NOTE 1.
5. ALL TRAFFIC SIGNS SHALL BE IN ACCORDANCE WITH A.S., 1742.2 MANUAL OF UNIFORM TRAFFIC CONTROL DEVICES (M.U.T.C.D.) PART 2 TRAFFIC CONTROL DEVICES FOR GENERAL USE.
6. THESE NOTES SHALL BE READ IN CONJUNCTION WITH:
 - A. GENERAL NOTES AND DISCLAIMERS FOR THE PROJECT
 - B. ROADWORKS NOTES FOR THE PROJECT, AND
 - C. PAVEMENT NOTES FOR THE PROJECT.



	Unles agreed otherwise by Robert Bird Group Pty Ltd ("RBG") ACH 010 580 748 in writing, intellectual property rights in any information or data supplied or transferred to you (including copyright) in all text, graphics, logos, sounds, recordings and otherwise are owned by or licensed to RBG. Other than for purposes authorised by RBG in writing, you must not copy, create, reproduce, modify, publish or communicate any information or data supplied or transferred to you, in any form or by any means, without RBG's prior written permission. © Robert Bird Group Pty Ltd 2011.	
	DO NOT SCALE DRAWINGS, USE FIGURED DIMENSIONS REFER COVER SHEET FOR NOTES UNLESS NOTED OTHERWISE	
1 17/08/12 J. OLAN ALLENDR REV. DATE BY APP'D BY APP'D FOR AMENDMENT	ISSUED FOR DEVELOPMENT APPLICATION	
<div> <div> <div>CONSULTANT</div> <div> Date generated: 17/08/2012 Checked by: J. MULLY Design Approved by: L. MULLY </div> </div> <div> <div>PROJECT MANAGER</div> <div>  Robert Bird Group Pty Ltd 170 Box Hill Road, Australia Square, Sydney NSW 1215 Level 5 9 Castlereagh St, Sydney NSW PH: (02) 8246 2200 Fax: (02) 8246 2001 ACH: 010 580 276 Web Site: www.robertbird.com </div> </div> <div> <div>PRINCIPAL</div> <div>  Health infrastructure  Health Western Sydney Local Health District </div> </div> <div> <div>PROJECT</div> <div> BLACKTOWN MT DRUITT HOSPITAL STAGE 1 EXPANSION AND SUB ACUTE BEDS PROJECTS BLACKTOWN CAMPUS: BLACKTOWN ROAD, NSW2148 MT DRUITT CAMPUS: 75 RAILWAY STREET, NSW2710 </div> </div> <div> <div>CIVIL</div> <div> DRAWING TITLE BIN-BLACKTOWN INFRASTRUCTURE GENERAL NOTES SCALE (B91) AS NOTED PROJECT No. NB11472 DRAWING No. BIN-CV-DG-DA0001 REVISION 1 </div> </div> </div>		

Disclaimer: Robert Bird Group Pty Ltd (RBG) does not warrant the accuracy, currency or completeness of any information or data that may be supplied by electronic means. You are responsible for verifying that any information or data supplied by electronic means is accurate, current and complete. RBG is not responsible for any loss or damage, or any claim for compensation, arising from the use of any information or data supplied by electronic means. RBG is not responsible for any loss or damage, or any claim for compensation, arising from the use of any information or data supplied by electronic means. RBG is not responsible for any loss or damage, or any claim for compensation, arising from the use of any information or data supplied by electronic means.

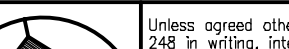


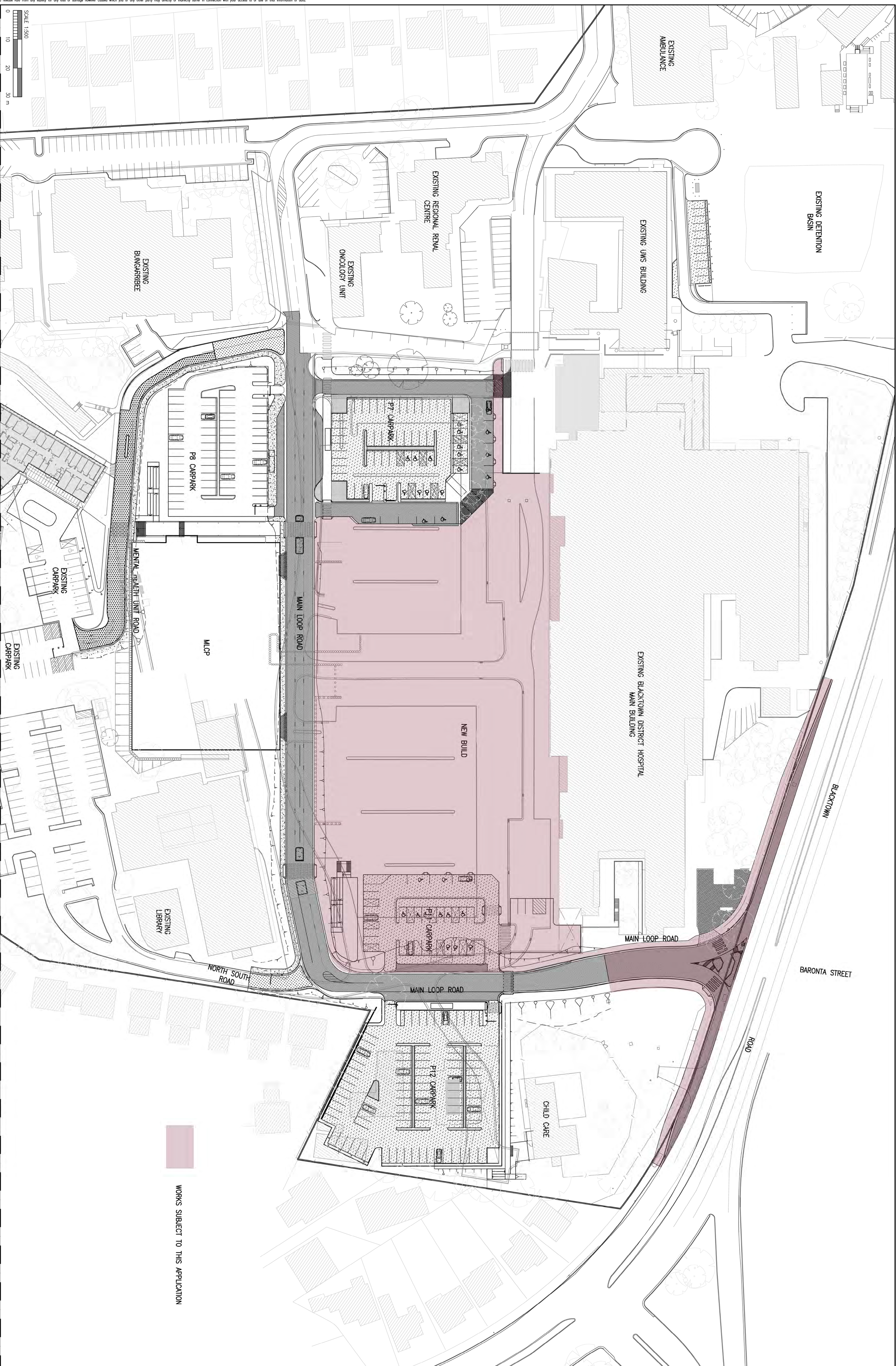


Unless agreed otherwise by Robert Bird Group Pty Ltd ("RBG") ADN 010 580 248 in writing, intellectual property rights in any information or data supplied or transferred to you (including copyright in all text, graphics, logos, icons, sound recordings and software) are owned by, or licensed to, RBG. Other than for personal authorised by RBG in writing, you must not copy, adapt, reproduce, disseminate or commercialise any information or data supplied or transferred by electronic means without RBG's prior written permission. © Robert Bird Group Pty Ltd 2011

DO NOT SCALE DRAWINGS, USE FIGURED DIMENSIONS
REFER COVER SHEET FOR NOTES UNLESS NOTED OTHERWISE

REV.	DATE	BY	APPROVED BY	AMENDMENT
1	17.08.12	LOREN ALANER		ISSUED FOR DEVELOPMENT APPLICATION

 <div>Unlawful copied otherwise by Robert Bird Group Pty Ltd (NSW) Act 010 580 148 is wrong, intellectual property rights in any information or data supplied or transferred to you (including copyright) in all text, graphics, logos, icons, sound recordings and software) are owned by, or licensed to, RBS. Other than for purposes authorized by RBS in writing, you may not copy, adapt, reproduce, distribute, publish or communicate any information or data supplied or transferred by electronic means without RBS's prior written permission. © Robert Bird Group Pty Ltd 2011</div>																																																																																																																																																																																																																																																																																																																																																																																																																																																																																																																																																																																																																																																																																																																																																																																																																																																																																																																																																																																																																																																																																																																																																																																																																																																																																																																																
---	--	--	--	--	--	--	--	--	--	--	--	--	--	--	--	--	--	--	--	--	--	--	--	--	--	--	--	--	--	--	--	--	--	--	--	--	--	--	--	--	--	--	--	--	--	--	--	--	--	--	--	--	--	--	--	--	--	--	--	--	--	--	--	--	--	--	--	--	--	--	--	--	--	--	--	--	--	--	--	--	--	--	--	--	--	--	--	--	--	--	--	--	--	--	--	--	--	--	--	--	--	--	--	--	--	--	--	--	--	--	--	--	--	--	--	--	--	--	--	--	--	--	--	--	--	--	--	--	--	--	--	--	--	--	--	--	--	--	--	--	--	--	--	--	--	--	--	--	--	--	--	--	--	--	--	--	--	--	--	--	--	--	--	--	--	--	--	--	--	--	--	--	--	--	--	--	--	--	--	--	--	--	--	--	--	--	--	--	--	--	--	--	--	--	--	--	--	--	--	--	--	--	--	--	--	--	--	--	--	--	--	--	--	--	--	--	--	--	--	--	--	--	--	--	--	--	--	--	--	--	--	--	--	--	--	--	--	--	--	--	--	--	--	--	--	--	--	--	--	--	--	--	--	--	--	--	--	--	--	--	--	--	--	--	--	--	--	--	--	--	--	--	--	--	--	--	--	--	--	--	--	--	--	--	--	--	--	--	--	--	--	--	--	--	--	--	--	--	--	--	--	--	--	--	--	--	--	--	--	--	--	--	--	--	--	--	--	--	--	--	--	--	--	--	--	--	--	--	--	--	--	--	--	--	--	--	--	--	--	--	--	--	--	--	--	--	--	--	--	--	--	--	--	--	--	--	--	--	--	--	--	--	--	--	--	--	--	--	--	--	--	--	--	--	--	--	--	--	--	--	--	--	--	--	--	--	--	--	--	--	--	--	--	--	--	--	--	--	--	--	--	--	--	--	--	--	--	--	--	--	--	--	--	--	--	--	--	--	--	--	--	--	--	--	--	--	--	--	--	--	--	--	--	--	--	--	--	--	--	--	--	--	--	--	--	--	--	--	--	--	--	--	--	--	--	--	--	--	--	--	--	--	--	--	--	--	--	--	--	--	--	--	--	--	--	--	--	--	--	--	--	--	--	--	--	--	--	--	--	--	--	--	--	--	--	--	--	--	--	--	--	--	--	--	--	--	--	--	--	--	--	--	--	--	--	--	--	--	--	--	--	--	--	--	--	--	--	--	--	--	--	--	--	--	--	--	--	--	--	--	--	--	--	--	--	--	--	--	--	--	--	--	--	--	--	--	--	--	--	--	--	--	--	--	--	--	--	--	--	--	--	--	--	--	--	--	--	--	--	--	--	--	--	--	--	--	--	--	--	--	--	--	--	--	--	--	--	--	--	--	--	--	--	--	--	--	--	--	--	--	--	--	--	--	--	--	--	--	--	--	--	--	--	--	--	--	--	--	--	--	--	--	--	--	--	--	--	--	--	--	--	--	--	--	--	--	--	--	--	--	--	--	--	--	--	--	--	--	--	--	--	--	--	--	--	--	--	--	--	--	--	--	--	--	--	--	--	--	--	--	--	--	--	--	--	--	--	--	--	--	--	--	--	--	--	--	--	--	--	--	--	--	--	--	--	--	--	--	--	--	--	--	--	--	--	--	--	--	--	--	--	--	--	--	--	--	--	--	--	--	--	--	--	--	--	--	--	--	--	--	--	--	--	--	--	--	--	--	--	--	--	--	--	--	--	--	--	--	--	--	--	--	--	--	--	--	--	--	--	--	--	--	--	--	--	--	--	--	--	--	--	--	--	--	--	--	--	--	--	--	--	--	--	--	--	--	--	--	--	--	--	--	--	--	--	--	--	--	--	--	--	--	--	--	--	--	--	--	--	--	--	--	--	--	--	--	--	--	--	--	--	--	--	--	--	--	--	--	--	--	--	--	--	--	--	--	--	--	--	--	--	--	--	--	--	--	--	--	--	--	--	--	--	--	--	--	--	--	--	--	--	--	--	--	--	--	--	--	--	--	--	--	--	--	--	--	--	--	--	--	--	--	--	--	--	--	--	--	--	--	--	--	--	--	--	--	--	--	--	--	--	--	--	--	--	--	--	--	--	--	--	--	--	--	--	--	--	--	--	--	--	--	--	--	--	--	--	--	--	--	--	--	--	--	--	--	--	--	--	--	--	--	--	--	--	--	--	--	--	--	--	--	--	--	--	--	--	--	--	--	--	--	--	--	--	--	--	--	--	--	--	--	--	--	--	--	--	--	--	--	--	--	--	--	--	--	--	--	--	--	--	--	--	--	--	--	--	--	--	--	--	--	--	--	--	--	--	--	--	--	--	--	--	--	--	--	--	--	--	--	--	--	--	--	--	--	--	--	--	--	--	--	--	--	--	--	--	--	--	--	--	--	--	--	--	--	--	--	--	--	--	--	--	--	--	--	--	--	--	--	--	--	--	--	--	--	--	--	--	--	--	--	--	--	--	--	--	--	--	--	--	--	--	--	--	--	--	--	--	--	--	--	--	--	--	--	--	--	--	--	--	--	--	--	--	--	--	--	--	--	--	--	--	--	--	--	--	--	--	--	--	--	--	--	--	--	--	--	--	--	--	--	--	--	--	--	--	--	--	--	--	--	--	--	--	--	--	--	--	--	--	--	--	--	--	--	--	--	--	--	--	--	--	--	--	--	--	--	--	--	--	--	--	--	--	--	--	--	--	--	--	--	--	--	--	--	--	--	--	--	--	--	--	--	--	--	--	--	--	--	--	--	--	--	--	--	--	--	--	--	--	--	--	--	--	--	--	--	--	--	--	--	--	--	--	--	--	--	--	--	--	--	--	--	--	--	--	--	--	--	--	--	--	--	--	--	--	--	--	--	--	--	--	--	--	--	--	--	--	--	--	--	--	--	--	--	--	--	--	--



WORKS SUBJECT TO THIS APPLICATION

[illegible]