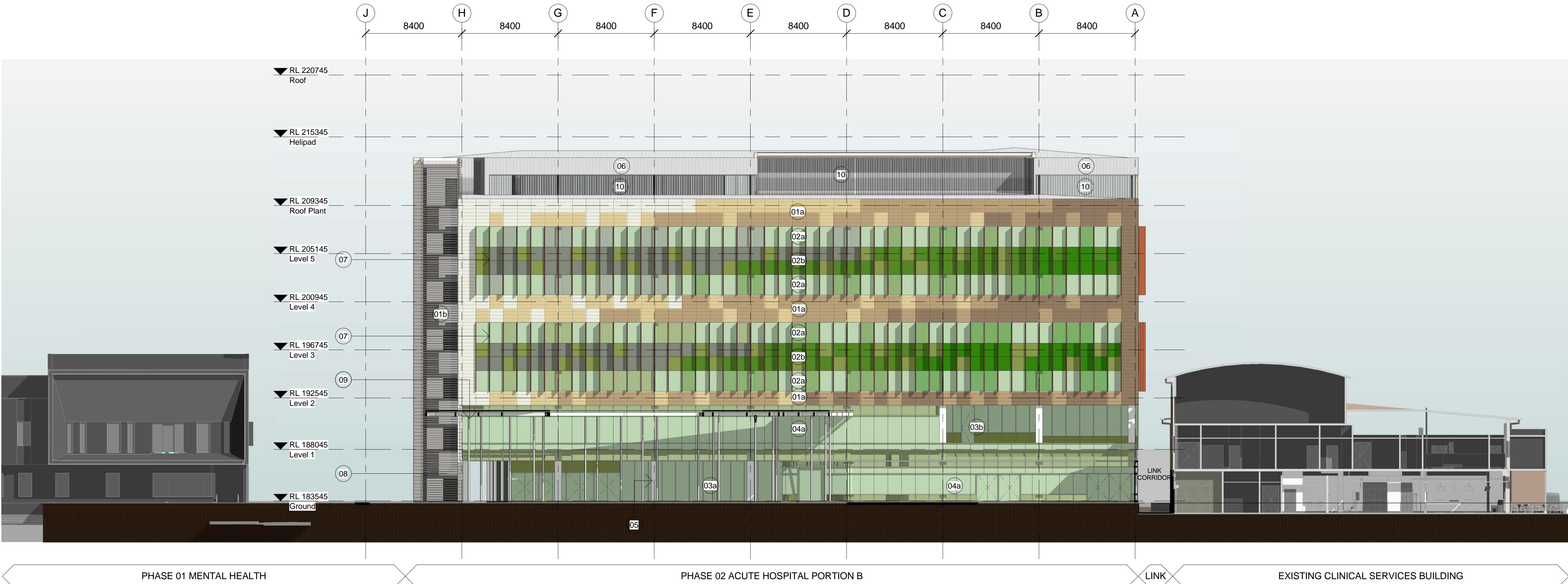


CODE	ITEM	COLOUR & FINISH	LOCATION
01a	SELECTED TERRACOTTA TILE CLADDING WITH SUSPENSION RAILS OVER MEMBRANE AND INSULATION ON LIGHTWEIGHT STEEL FRAME	ALLOW UPTO 4 COLOURS FROM THE STANDARD PALLETTE	PREDOMINANTLY ON IPU TOWER FACADE ON FLOOR LEVELS 2-5, EAST AND SOUTH FACADES OF THE PODIUM
01b	SELECTED TERRACOTTA FIXED SUNSCREEN SYSTEM OR EQUIVALENT APPROVED SYSTEM ON PROPRIETORY STEEL FRAME AS 75% OPEN SCREEN	ALLOW 2 COLOURS FROM THE STANDARD PALLETTE	TYPICALLY EXTERNAL OPEN STAIRS
02a	ANODIZED ALUMINIUM FRAMED STRIP WINDOW: 65% VISION GLASS, 35% GLAZED SHADOW BOX.	GLAZING: SELECTED VIRIDIAN PERFORMANCE GLASS FROM THE GREEN TINTED COLOUR RANGE SHADOW BOX SPANDREL: SELECTED COLOURS TO ANODIZED ALUMINIUM BACK PANS	PREDOMINANTLY ON IPU TOWER FACADE ON FLOOR LEVELS 2-5 AND FIRST FLOOR FACADE
02b	ANODIZED ALUMINIUM SPANDREL PANEL	ALLOW UP TO 4 SELECTED ANODIZED ALUMINIUM COLOURS	PREDOMINANTLY ON IPU TOWER FACADE ON FLOOR LEVELS 2-5
03a	SHOPFRONT GLAZING SYSTEM: 100% VISION GLASS TO UPTO 3.5m ABOVE FLOOR LEVEL	SELECTED VIRIDIAN PERFORMANCE GLASS FROM THE GREEN TINTED COLOUR RANGE	GROUND FLOOR NORTH (FRONT) FACADE
03b	SHOPFRONT GLAZING SYSTEM: 65% VISION GLASS; 35% ANODIZED ALUMINIUM SPANDREL PANEL TO UPTO 3.5m ABOVE FLOOR LEVEL	GLAZING: SELECTED VIRIDIAN PERFORMANCE GLASS FROM THE GREEN TINTED COLOUR RANGE SPANDREL PANEL: UPTO 4 SELECTED ANODIZED ALUMINIUM PANELS	GROUND AND FIRST FLOOR NORTH AND SOUTH FACADE
04a	CURTAIN WALL SYSTEM: 65% VISION GLASS 35% GLAZED SHADOW BOX SPANDREL	GLAZING: SELECTED VIRIDIAN PERFORMANCE GLASS FROM THE GREEN TINTED COLOUR RANGE SHADOW BOX SPANDREL: SELECTED COLOURS TO ANODIZED ALUMINIUM BACK PANS	GROUND FLOOR NORTH (FRONT) FACADE
04b	CURTAIN WALL SYSTEM: 60% VISION GLASS 40% ANODIZED ALUMINIUM SPANDREL PANEL	GLAZING: SELECTED VIRIDIAN PERFORMANCE GLASS FROM THE GREEN TINTED COLOUR RANGE SPANDREL PANEL: UPTO 4 SELECTED ANODIZED ALUMINIUM PANELS	TYPICALLY CENTRAL LIFT AND STAIR LOBBY AND ENDS OF CORRIDORS IN IPU TOWER
05	PRECAST CLADDING TO CONCRETE COLUMNS	WHITE BRIGHTONLITE CEMENT	EXPRESSED COLUMNS ON THE FRONT FAÇADE
06	SELECTED STANDING SEAM PROFILED METAL SHEET CLADDING OVER INSULATION ON LIGHTWEIGHT STEEL FRAME	SELECTED ANODIZED COLOUR	TYPICALLY EXTERNAL SERVICE RISERS, CENTRAL CORE FACADE AND PART EAST AND WEST PODIUM FACADE
07	VERTICAL ALUMINIUM SUNSHADING FINS	SELECTED ANODIZED COLOUR	SUNSHADING ON STRIP WINDOWS
08	EXTERIOR STRUCTURAL STEEL	WHITE; SEMI GLOSS	FRONT ENTRY CANOPY
09	CLEAR ROOF WITH INTEGRATED SOLAR PANELS	LAMINATED SERAPHIC GLASS OR EQUIVALENT, CUSTOM DESIGNED FRIT PATTERN	FRONT ENTRY CANOPY
10	FIXED ALUMINIUM LOUVERS	SELECTED ANODIZED COLOUR	GENERALLY PLANTROOM WALLS



1 ACUTE HOSPITAL PRECINCT NORTH ELEVATION
1 : 200

0246810
1:200

THIS DOCUMENT IS THE COPYRIGHT OF BILLARD LEECE PARTNERSHIP PTY LTD
ALL INFORMATION ILLUSTRATED ON THIS DOCUMENT IS TRUE, CHECKED AND VERIFIED ON SITE
IN THE EVENT OF DISCREPANCIES REFER TO ARCHITECT PRIOR TO COMMENCEMENT OF THE WORK.
DO NOT SCALE DRAWINGS MANUALLY OR ELECTRONICALLY.

KEY PLAN

REV	DESCRIPTION OF CHANGE	DRAWN	CHECK	DATE
6	Costing Issue			20/11/2012
7	General Revision			23/11/2012
8	100% SD Report Issue			30/11/2012
9	DA Submission			30/11/2012
10	DS COORDINATION ISSUE			21/12/2012
11	DA SUBMISSION			01/02/2013
12	DA SUBMISSION			12/02/2013
13	GENERAL REVISION			27/02/2013
14	DA SUBMISSION			08/03/2013

STEENSENVARMING

AcOR
CONSULTANTS

Mott MacDonald

QUANTITY SURVEYOR

Davis Langdon

An AECOM Company

15 100 PACIFIC HIGHWAY
NORTH SYDNEY
NSW 2060

P: 02 9956 8822
W: www.davislangdon.com/ANZ/

CLIENT

NSW
GOVERNMENT

Health
Infrastructure

77 PACIFIC HIGHWAY
NORTH SYDNEY
NSW 2060

P: 02 9978 5402
F: 02 8904 1377
W: www.hinfra.health.nsw.gov.au

ARCHITECTS

Billard Leece Partnership Pty Ltd
Architects & Urban Planners
Studio 307, 50 Holt St
Sunny Hills 2010
NSW Australia
T +61 2 8096 4066
E info@blp.com.au
www.blp.com.au

PROJECT:

WAGGA WAGGA HEALTH SERVICES
REDEVELOPMENT
EDWARD STREET
WAGGA WAGGA, NSW, 2650

DRAWING TITLE:

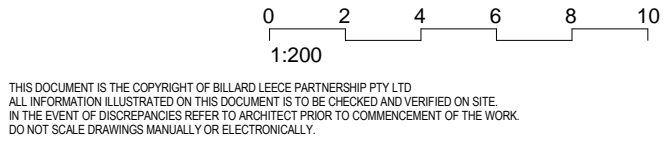
ACUTE HOSPITAL PORTION B -
ELEVATION 01 - NORTH

Drawn: NSWL	Designed: DL/WL	Reviewed: Project Manager:
Check: NF	Design Review:	Approved: Project Director:
PROJECT NUMBER: 12602	DRAWING NUMBER:	ISSUE:
SCALE: 1 : 200@A1	AR.AH3.07.0001	14

FOR DA APPROVAL

8/03/2013 5:40:59 PM

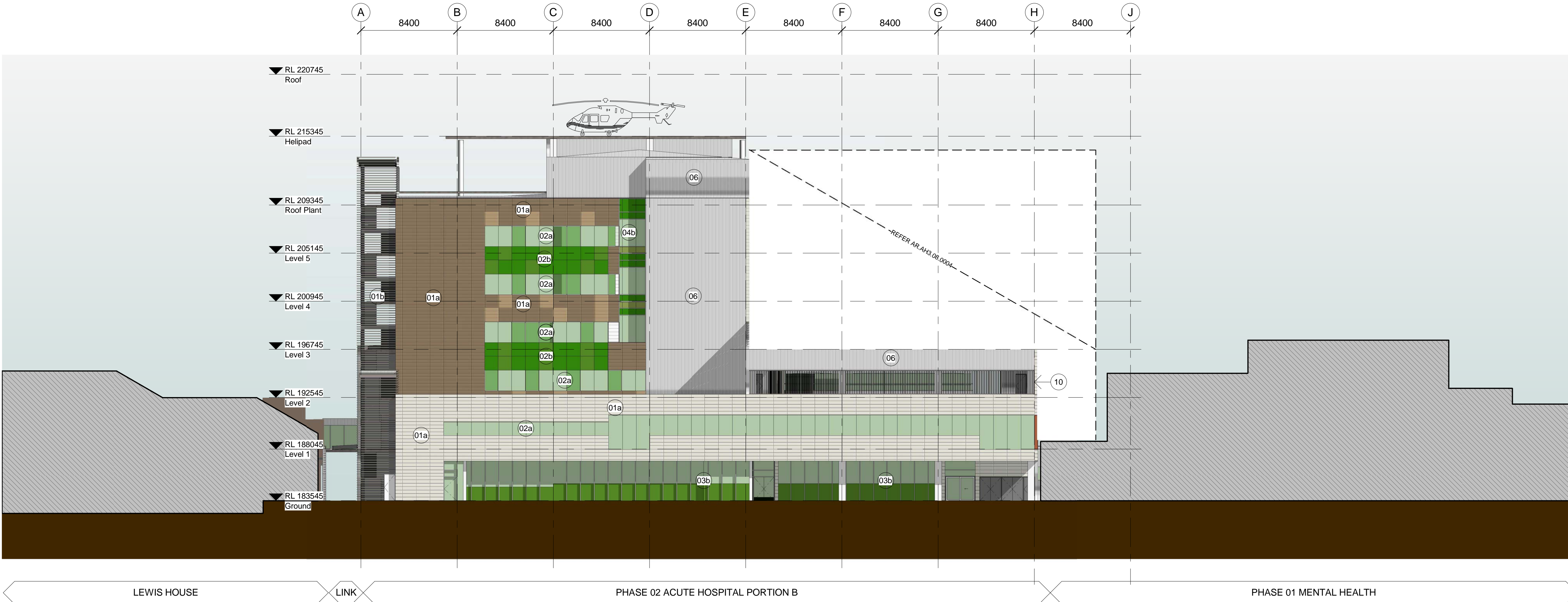
CODE	ITEM	COLOUR & FINISH	LOCATION
01a	SELECTED TERRACOTTA TILE CLADDING WITH SUSPENSION RAILS OVER MEMBRANE AND INSULATION ON LIGHTWEIGHT STEEL FRAME	ALLOW UPTO 4 COLOURS FROM THE STANDARD PALLETTE	PREDOMINANTLY ON IPU TOWER FACADE ON FLOOR LEVELS 2-5, EAST AND SOUTH FACADES OF THE PODIUM
01b	SELECTED TERRACOTTA FIXED SUNSCREEN SYSTEM OR EQUIVALENT APPROVED SYSTEM ON PROPRIETORY STEEL FRAME AS 75% OPEN SCREEN	ALLOW 2 COLOURS FROM THE STANDARD PALLETTE	TYPICALLY EXTERNAL OPEN STAIRS
02a	ANODIZED ALUMINIUM FRAMED STRIP WINDOW: 65% VISION GLASS, 35% GLAZED SHADOW BOX.	GLAZING: SELECTED VIRIDIAN PERFORMANCE GLASS FROM THE GREEN TINTED COLOUR RANGE SHADOW BOX SPANDREL: SELECTED COLOURS TO ANODIZED ALUMINIUM BACK PANS	PREDOMINANTLY ON IPU TOWER FACADE ON FLOOR LEVELS 2-5 AND FIRST FLOOR FACADE
02b	ANODIZED ALUMINIUM SPANDREL PANEL	ALLOW UP TO 4 SELECTED ANODIZED ALUMINIUM COLOURS	PREDOMINANTLY ON IPU TOWER FACADE ON FLOOR LEVELS 2-5
03a	SHOPFRONT GLAZING SYSTEM: 100% VISION GLASS TO UPTO 3.5m ABOVE FLOOR LEVEL	SELECTED VIRIDIAN PERFORMANCE GLASS FROM THE GREEN TINTED COLOUR RANGE	GROUND FLOOR NORTH (FRONT) FACADE
03b	SHOPFRONT GLAZING SYSTEM: 65% VISION GLASS; 35% ANODIZED ALUMINIUM SPANDREL PANEL TO UPTO 3.5m ABOVE FLOOR LEVEL	GLAZING: SELECTED VIRIDIAN PERFORMANCE GLASS FROM THE GREEN TINTED COLOUR RANGE SPANDREL PANEL: UPTO 4 SELECTED ANODIZED ALUMINIUM PANELS	GROUND AND FIRST FLOOR NORTH AND SOUTH FACADE
04a	CURTAIN WALL SYSTEM: 65% VISION GLASS 35% GLAZED SHADOW BOX SPANDREL	GLAZING: SELECTED VIRIDIAN PERFORMANCE GLASS FROM THE GREEN TINTED COLOUR RANGE SHADOW BOX SPANDREL: SELECTED COLOURS TO ANODIZED ALUMINIUM BACK PANS	GROUND FLOOR NORTH (FRONT) FACADE
04b	CURTAIN WALL SYSTEM: 60% VISION GLASS 40% ANODIZED ALUMINIUM SPANDREL PANEL	GLAZING: SELECTED VIRIDIAN PERFORMANCE GLASS FROM THE GREEN TINTED COLOUR RANGE SPANDREL PANEL: UPTO 4 SELECTED ANODIZED ALUMINIUM PANELS	TYPICALLY CENTRAL LIFT AND STAIR LOBBY AND ENDS OF CORRIDORS IN IPU TOWER
05	PRECAST CLADDING TO CONCRETE COLUMNS	WHITE BRIGHTONLITE CEMENT	EXPRESSED COLUMNS ON THE FRONT FAÇADE
06	SELECTED STANDING SEAM PROFILED METAL SHEET CLADDING OVER INSULATION ON LIGHTWEIGHT STEEL FRAME	SELECTED ANODIZED COLOUR	TYPICALLY EXTERNAL SERVICE RISERS; CENTRAL CORE FACADE AND PART EAST AND WEST PODIUM FACADE
07	VERTICAL ALUMINIUM SUNSHADING FINS	SELECTED ANODIZED COLOUR	SUNSHADING ON STRIP WINDOWS
08	EXTERIOR STRUCTURAL STEEL	WHITE; SEMI GLOSS	FRONT ENTRY CANOPY
09	CLEAR ROOF WITH INTEGRATED SOLAR PANELS	LAMINATED SERAPHIC GLASS OR EQUIVALENT. CUSTOM DESIGNED FRIT PATTERN	FRONT ENTRY CANOPY
10	FIXED ALUMINIUM LOUVERS	SELECTED ANODIZED COLOUR	GENERALLY PLANTROOM WALLS



THIS DOCUMENT IS THE COPYRIGHT OF BILLARD LEECE PARTNERSHIP PTY LTD. ALL INFORMATION ILLUSTRATED ON THIS DOCUMENT IS TRUE, CHECKED AND VERIFIED ON SITE. IN THE EVENT OF DISCREPANCIES REFER TO ARCHITECT PRIOR TO COMMENCEMENT OF THE WORK. DO NOT SCALE OR MAKE CHANGES MANUALLY OR ELECTRONICALLY.

KEY PLAN

REV	DESCRIPTION OF CHANGE	DRAWN	CHECK	DATE
1	Costing Issue			20/11/2012
2	General Revision			23/11/2012
3	100% SD Report Issue			30/11/2012
4	DA Submission			30/11/2012
5	DS COORDINATION ISSUE			21/12/2012
6	DA SUBMISSION			01/02/2013
7	DA SUBMISSION			12/02/2013
8	GENERAL REVISION			27/02/2013
9	DA SUBMISSION			08/03/2013



1 ACUTE HOSPITAL PRECINCT SOUTH ELEVATION

STEENSENVARMING



QUANTITY SURVEYOR
Davis Langdon
An AECOM Company
15 100 PACIFIC HIGHWAY P: 02 9956 8822
NORTH SYDNEY W: www.davislangdon.com/ANZ
NSW 2060

CLIENT
NSW Health Infrastructure
77 PACIFIC HIGHWAY P: 02 9978 5402
NORTH SYDNEY F: 02 8904 1377
NSW 2060 W: www.hinfra.health.nsw.gov.au

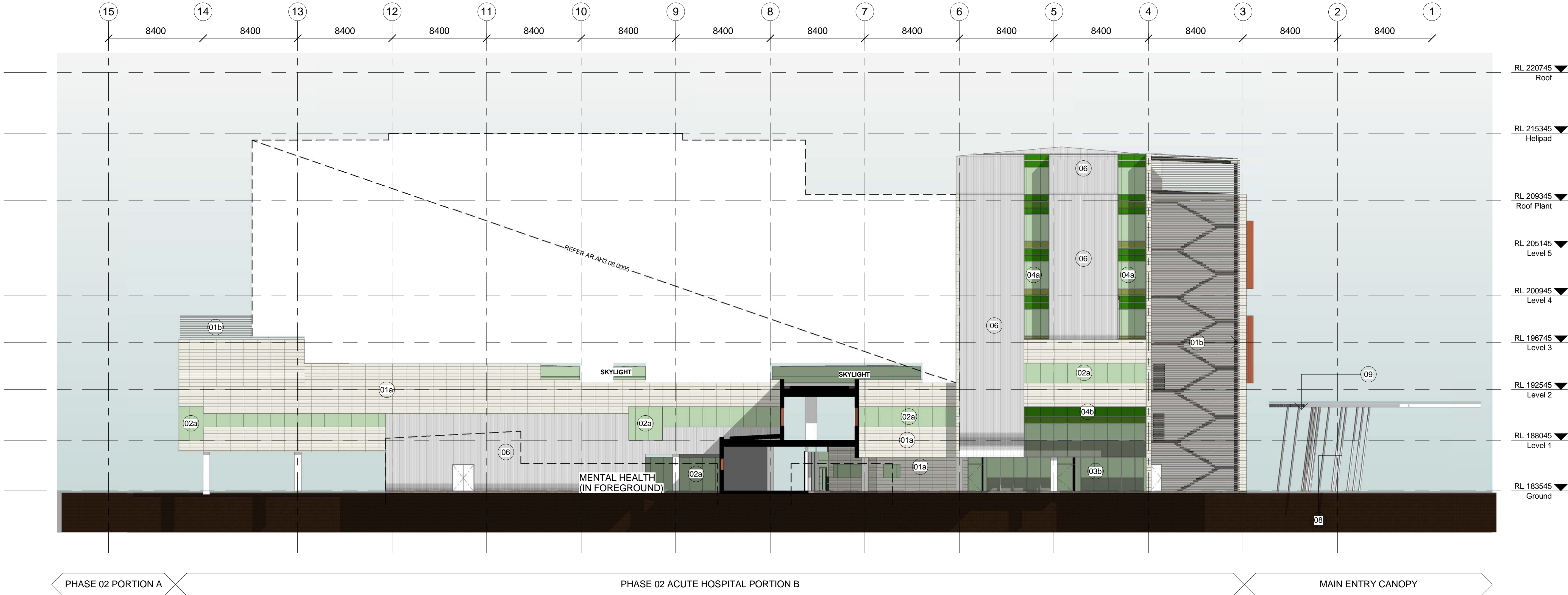
ARCHITECTS
Billard Leece Partnership Pty Ltd
Architects & Urban Planners
Studio 307, 50 Holt St
Surry Hills 2010
NSW Australia
T +61 2 8096 4066
E info@blp.com.au
www.blp.com.au

PROJECT:
WAGGA WAGGA HEALTH SERVICES
REDEVELOPMENT
EDWARD STREET
WAGGA WAGGA, NSW, 2650
DRAWING TITLE:
ACUTE HOSPITAL PORTION B -
ELEVATION 02 - SOUTH

Drawn: NSWL	Designed: DL/WL	Reviewed: Project Manager:
Check: NL	Design Review:	Approved: Project Director:
PROJECT NUMBER: 12602	DRAWING NUMBER: AR.AH3.07.0002	ISSUE: 9
SCALE: 1 : 200@A1		

FOR DA APPROVAL

ACUTE HOSPITAL PRECINCT EAST ELEVATION



CODE	ITEM	COLOUR & FINISH	LOCATION
01a	SELECTED TERRACOTTA TILE CLADDING WITH SUSPENSION RAILS OVER MEMBRANE AND INSULATION ON LIGHTWEIGHT STEEL FRAME	ALLOW UPTO 4 COLOURS FROM THE STANDARD PALLETTE	PREDOMINANTLY ON IPU TOWER FACADE ON FLOOR LEVELS 2-5, EAST AND SOUTH FACADES OF THE PODIUM
01b	SELECTED TERRACOTTA FIXED SUNSCREEN SYSTEM OR EQUIVALENT APPROVED SYSTEM ON PROPRIETORY STEEL FRAME AS 75% OPEN SCREEN	ALLOW 2 COLOURS FROM THE STANDARD PALLETTE	TYPICALLY EXTERNAL OPEN STAIRS
02a	ANODIZED ALUMINIUM FRAMED STRIP WINDOW: 65% VISION GLASS, 35% GLAZED SHADOW BOX.	GLAZING: SELECTED VIRIDIAN PERFORMANCE GLASS FROM THE GREEN TINTED COLOUR RANGE SHADOW BOX SPANDREL: SELECTED COLOURS TO ANODIZED ALUMINIUM BACK PANS	PREDOMINANTLY ON IPU TOWER FACADE ON FLOOR LEVELS 2-5 AND FIRST FLOOR FACADE
02b	ANODIZED ALUMINIUM SPANDREL PANEL	ALLOW UP TO 4 SELECTED ANODIZED ALUMINIUM COLOURS	PREDOMINANTLY ON IPU TOWER FACADE ON FLOOR LEVELS 2-5
03a	SHOPFRONT GLAZING SYSTEM: 100% VISION GLASS TO UPTO 3.5m ABOVE FLOOR LEVEL	SELECTED VIRIDIAN PERFORMANCE GLASS FROM THE GREEN TINTED COLOUR RANGE	GROUND FLOOR NORTH (FRONT) FACADE
03b	SHOPFRONT GLAZING SYSTEM: 65% VISION GLASS; 35% ANODIZED ALUMINIUM SPANDREL PANEL TO UPTO 3.5m ABOVE FLOOR LEVEL	GLAZING: SELECTED VIRIDIAN PERFORMANCE GLASS FROM THE GREEN TINTED COLOUR RANGE SPANDREL PANEL: UPTO 4 SELECTED ANODIZED ALUMINIUM PANELS	GROUND AND FIRST FLOOR NORTH AND SOUTH FACADE
04a	CURTAIN WALL SYSTEM: 65% VISION GLASS 35% GLAZED SHADOW BOX SPANDREL	GLAZING: SELECTED VIRIDIAN PERFORMANCE GLASS FROM THE GREEN TINTED COLOUR RANGE SHADOW BOX SPANDREL: SELECTED COLOURS TO ANODIZED ALUMINIUM BACK PANS	GROUND FLOOR NORTH (FRONT) FACADE
04b	CURTAIN WALL SYSTEM: 60% VISION GLASS 40% ANODIZED ALUMINIUM SPANDREL PANEL	GLAZING: SELECTED VIRIDIAN PERFORMANCE GLASS FROM THE GREEN TINTED COLOUR RANGE SPANDREL PANEL: UPTO 4 SELECTED ANODIZED ALUMINIUM PANELS	TYPICALLY CENTRAL LIFT AND STAIR LOBBY AND ENDS OF CORRIDORS IN IPU TOWER
05	PRECAST CLADDING TO CONCRETE COLUMNS	WHITE BRIGHTONLITE CEMENT	EXPRESSED COLUMNS ON THE FRONT FAÇADE
06	SELECTED STANDING SEAM PROFILED METAL SHEET CLADDING OVER INSULATION ON LIGHTWEIGHT STEEL FRAME	SELECTED ANODIZED COLOUR	TYPICALLY EXTERNAL SERVICE RISERS; CENTRAL CORE FACADE AND PART EAST AND WEST PODIUM FACADE
07	VERTICAL ALUMINIUM SUNSHADING FINS	SELECTED ANODIZED COLOUR	SUNSHADING ON STRIP WINDOWS
08	EXTERIOR STRUCTURAL STEEL	WHITE; SEMI GLOSS	FRONT ENTRY CANOPY
09	CLEAR ROOF WITH INTEGRATED SOLAR PANELS	LAMINATED SERAPHIC GLASS OR EQUIVALENT. CUSTOM DESIGNED FRIT PATTERN	FRONT ENTRY CANOPY
10	FIXED ALUMINIUM LOUVERS	SELECTED ANODIZED COLOUR	GENERALLY PLANTROOM WALLS

0246810
1:200

THIS DOCUMENT IS THE COPYRIGHT OF BILLARD LEECE PARTNERSHIP PTY LTD
ALL INFORMATION ILLUSTRATED ON THIS DOCUMENT IS TRUE, CORRECT AND VERIFIED ON SITE
IN THE EVENT OF DISCREPANCIES REFER TO ARCHITECT PRIOR TO COMMENCEMENT OF THE WORK.
DO NOT SCALE DRAWINGS MANUALLY OR ELECTRONICALLY.

KEY PLAN

REV	DESCRIPTION OF CHANGE	DRAWN	CHECK	DATE
1	Costing Issue			20/11/2012
2	General Revision			23/11/2012
3	100% SD Report Issue			30/11/2012
4	DA Submission			30/11/2012
5	DS COORDINATION ISSUE			21/12/2012
6	DA SUBMISSION			01/02/2013
7	DA SUBMISSION			12/02/2013
8	GENERAL REVISION			27/02/2013
9	DA SUBMISSION			08/03/2013

STEENSENVARMING

AcOR
CONSULTANTS

Mott MacDonald

QUANTITY SURVEYOR

Davis Langdon

An AECOM Company

15 100 PACIFIC HIGHWAY NORTH SYDNEY NSW 2060

P: 02 9956 8822 W: www.davislangdon.com/ANZ/

CLIENT

NSW GOVERNMENT

Health Infrastructure

77 PACIFIC HIGHWAY NORTH SYDNEY NSW 2060

P: 02 9978 5402 F: 02 8904 1377 W: www.hinfra.health.nsw.gov.au

ARCHITECTS

Billard Leece Partnership Pty Ltd

Architects & Urban Planners

Studio 307, 50 Holt St
Sunny Hills 2010
NSW Australia
T +61 2 8096 4066
E info@blp.com.au
www.blp.com.au

PROJECT:

WAGGA WAGGA HEALTH SERVICES
REDEVELOPMENT
EDWARD STREET
WAGGA WAGGA, NSW, 2650

DRAWING TITLE:

ACUTE HOSPITAL PORTION B -
ELEVATION 03 - EAST

Drawn: NSWL	Designed: DL/WL	Reviewed: Project Manager:
Drafting Check: NF	Design Review:	Approved Project Director:
PROJECT NUMBER: 12602	DRAWING NUMBER:	ISSUE:
SCALE: 1 : 200@A1	AR.AH3.07.0003	9

FOR DA APPROVAL

2 ACUTE HOSPITAL PRECINCT WEST ELEVATION



CODE	ITEM	COLOUR & FINISH	LOCATION
01a	SELECTED TERRACOTTA TILE CLADDING WITH SUSPENSION RAILS OVER MEMBRANE AND INSULATION ON LIGHTWEIGHT STEEL FRAME	ALLOW UPTO 4 COLOURS FROM THE STANDARD PALLETTE	PREDOMINANTLY ON IPU TOWER FACADE ON FLOOR LEVELS 2-5, EAST AND SOUTH FACADES OF THE PODIUM
01b	SELECTED TERRACOTTA FIXED SUNSCREEN SYSTEM OR EQUIVALENT APPROVED SYSTEM ON PROPRIETARY STEEL FRAME AS 75% OPEN SCREEN	ALLOW 2 COLOURS FROM THE STANDARD PALLETTE	TYPICALLY EXTERNAL OPEN STAIRS
02a	ANODIZED ALUMINIUM FRAMED STRIP WINDOW: 65% VISION GLASS, 35% GLAZED SHADOW BOX.	GLAZING: SELECTED VIRIDIAN PERFORMANCE GLASS FROM THE GREEN TINTED COLOUR RANGE SHADOW BOX SPANDREL: SELECTED COLOURS TO ANODIZED ALUMINIUM BACK PANS	PREDOMINANTLY ON IPU TOWER FACADE ON FLOOR LEVELS 2-5 AND FIRST FLOOR FACADE
02b	ANODIZED ALUMINIUM SPANDREL PANEL	ALLOW UP TO 4 SELECTED ANODIZED ALUMINIUM COLOURS	PREDOMINANTLY ON IPU TOWER FACADE ON FLOOR LEVELS 2-5
03a	SHOPFRONT GLAZING SYSTEM: 100% VISION GLASS TO UPTO 3.5m ABOVE FLOOR LEVEL	SELECTED VIRIDIAN PERFORMANCE GLASS FROM THE GREEN TINTED COLOUR RANGE	GROUND FLOOR NORTH (FRONT) FACADE
03b	SHOPFRONT GLAZING SYSTEM: 65% VISION GLASS; 35% ANODIZED ALUMINIUM SPANDREL PANEL TO UPTO 3.5m ABOVE FLOOR LEVEL	GLAZING: SELECTED VIRIDIAN PERFORMANCE GLASS FROM THE GREEN TINTED COLOUR RANGE SPANDREL PANEL: UPTO 4 SELECTED ANODIZED ALUMINIUM PANELS	GROUND AND FIRST FLOOR NORTH AND SOUTH FACADE
04a	CURTAIN WALL SYSTEM: 65% VISION GLASS 35% GLAZED SHADOW BOX SPANDREL	GLAZING: SELECTED VIRIDIAN PERFORMANCE GLASS FROM THE GREEN TINTED COLOUR RANGE SHADOW BOX SPANDREL: SELECTED COLOURS TO ANODIZED ALUMINIUM BACK PANS	GROUND FLOOR NORTH (FRONT) FACADE
04b	CURTAIN WALL SYSTEM: 60% VISION GLASS 40% ANODIZED ALUMINIUM SPANDREL PANEL	GLAZING: SELECTED VIRIDIAN PERFORMANCE GLASS FROM THE GREEN TINTED COLOUR RANGE SPANDREL PANEL: UPTO 4 SELECTED ANODIZED ALUMINIUM PANELS	TYPICALLY CENTRAL LIFT AND STAIR LOBBY AND ENDS OF CORRIDORS IN IPU TOWER
05	PRECAST CLADDING TO CONCRETE COLUMNS	WHITE BRIGHTONLITE CEMENT	EXPRESSED COLUMNS ON THE FRONT FAÇADE
06	SELECTED STANDING SEAM PROFILED METAL SHEET CLADDING OVER INSULATION ON LIGHTWEIGHT STEEL FRAME	SELECTED ANODIZED COLOUR	TYPICALLY EXTERNAL SERVICE RISERS, CENTRAL CORE FACADE AND PART EAST AND WEST PODIUM FACADE
07	VERTICAL ALUMINIUM SUNSHADING FINS	SELECTED ANODIZED COLOUR	SUNSHADING ON STRIP WINDOWS
08	EXTERIOR STRUCTURAL STEEL	WHITE; SEMI GLOSS	FRONT ENTRY CANOPY
09	CLEAR ROOF WITH INTEGRATED SOLAR PANELS	LAMINATED SERAPHIC GLASS OR EQUIVALENT, CUSTOM DESIGNED FRIT PATTERN	FRONT ENTRY CANOPY
10	FIXED ALUMINIUM LOUVERS	SELECTED ANODIZED COLOUR	GENERALLY PLANTROOM WALLS

0246810
1:200

THIS DOCUMENT IS THE COPYRIGHT OF BILLARD LEECE PARTNERSHIP PTY LTD.
ALL INFORMATION ILLUSTRATED ON THIS DOCUMENT IS TRUE, CHECKED AND VERIFIED ON SITE.
IN THE EVENT OF DISCREPANCIES REFER TO ARCHITECT PRIOR TO COMMENCEMENT OF THE WORK.
DO NOT SCALE DRAWINGS MANUALLY OR ELECTRONICALLY.

KEY PLAN

REV	DESCRIPTION OF CHANGE	DRAWN	CHECK	DATE
1	Costing Issue			20/11/2012
2	General Revision			23/11/2012
3	100% SD Report Issue			30/11/2012
4	DA Submission			30/11/2012
5	DS COORDINATION ISSUE			21/12/2012
6	DA SUBMISSION			01/02/2013
7	DA SUBMISSION			12/02/2013
8	GENERAL REVISION			27/02/2013
9	DA SUBMISSION			08/03/2013

STEENSENVARMING

AcOR CONSULTANTS

Mott MacDonald

QUANTITY SURVEYOR

Davis Langdon

An AECOM Company

L5 100 PACIFIC HIGHWAY NORTH SYDNEY NSW 2060

P: 02 9956 8822 W: www.davislangdon.com/ANZ

CLIENT

NSW GOVERNMENT

Health Infrastructure

77 PACIFIC HIGHWAY NORTH SYDNEY NSW 2060

P: 02 9978 5402 F: 02 8904 1377 W: www.hinfra.health.nsw.gov.au

ARCHITECTS

Billard Leece Partnership Pty Ltd

Architects & Urban Planners

Studio 307, 50 Holt St

Surry Hills 2010

NSW Australia

T +61 2 8096 4066

E info@blp.com.au www.blp.com.au

PROJECT:

WAGGA WAGGA HEALTH SERVICES REDEVELOPMENT

EDWARD STREET

WAGGA WAGGA, NSW, 2650

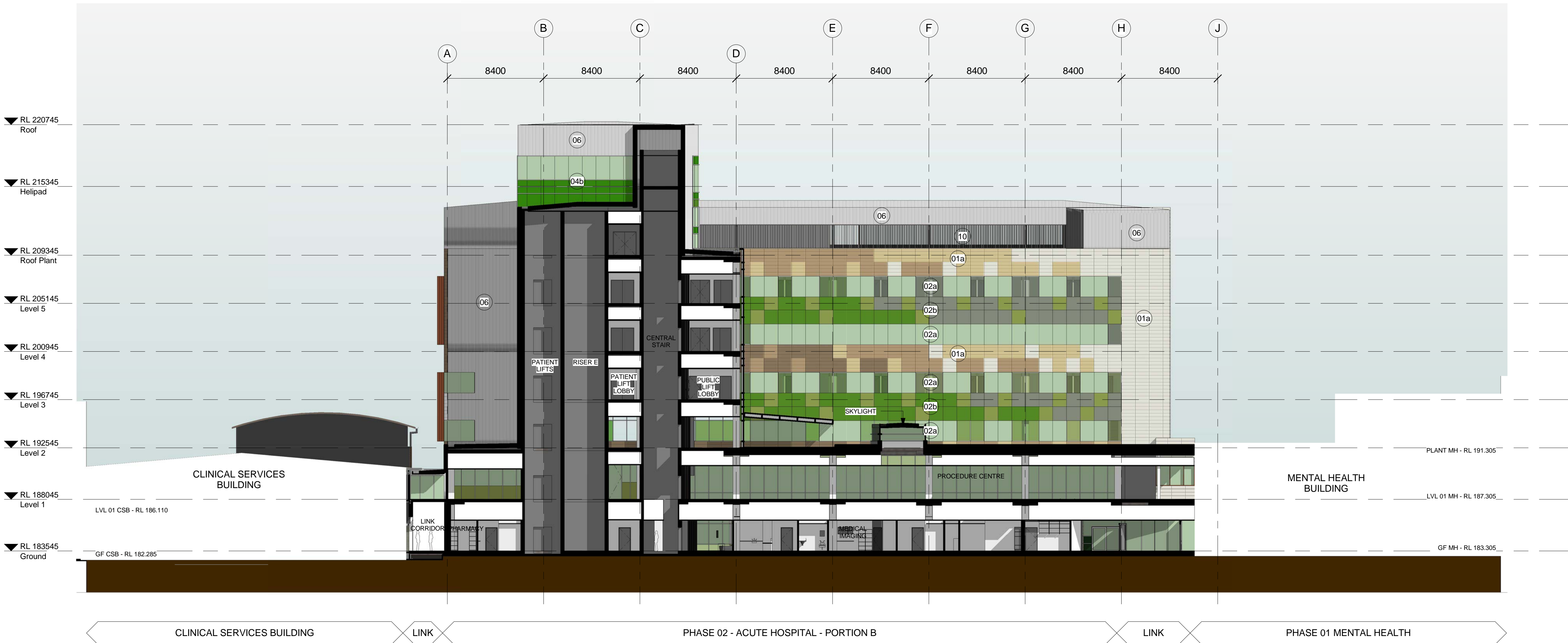
DRAWING TITLE:

ACUTE HOSPITAL PORTION B - ELEVATION 04 - WEST

Drawn: NSWL	Designed: DL/WL	Reviewed: Project Manager:
Check: NF	Design Review:	Approved: Project Director:
PROJECT NUMBER: 12602	DRAWING NUMBER:	ISSUE: 9
SCALE: 1 : 200@A1	AR.AH3.07.0004	

FOR DA APPROVAL

CODE	ITEM	COLOUR & FINISH	LOCATION
01a	SELECTED TERRACOTTA TILE CLADDING WITH SUSPENSION RAILS OVER MEMBRANE AND INSULATION ON LIGHTWEIGHT STEEL FRAME	ALLOW UPTO 4 COLOURS FROM THE STANDARD PALLETTE	PREDOMINANTLY ON IPU TOWER FACADE ON FLOOR LEVELS 2-5, EAST AND SOUTH FACADES OF THE PODIUM
01b	SELECTED TERRACOTTA FIXED SUNSCREEN SYSTEM OR EQUIVALENT APPROVED SYSTEM ON PROPRIETARY STEEL FRAME AS 75% OPEN SCREEN	ALLOW 2 COLOURS FROM THE STANDARD PALLETTE	TYPICALLY EXTERNAL OPEN STAIRS
02a	ANODIZED ALUMINIUM FRAMED STRIP WINDOW: 65% VISION GLASS, 35% GLAZED SHADOW BOX.	GLAZING: SELECTED VIRIDIAN PERFORMANCE GLASS FROM THE GREEN TINTED COLOUR RANGE SHADOW BOX SPANDREL: SELECTED COLOURS TO ANODIZED ALUMINIUM BACK PANS	PREDOMINANTLY ON IPU TOWER FACADE ON FLOOR LEVELS 2-5 AND FIRST FLOOR FACADE
02b	ANODIZED ALUMINIUM SPANDREL PANEL	ALLOW UP TO 4 SELECTED ANODIZED ALUMINIUM COLOURS	PREDOMINANTLY ON IPU TOWER FACADE ON FLOOR LEVELS 2-5
03a	SHOPFRONT GLAZING SYSTEM: 100% VISION GLASS TO UPTO 3.5m ABOVE FLOOR LEVEL	SELECTED VIRIDIAN PERFORMANCE GLASS FROM THE GREEN TINTED COLOUR RANGE	GROUND FLOOR NORTH (FRONT) FACADE
03b	SHOPFRONT GLAZING SYSTEM: 65% VISION GLASS; 35% ANODIZED ALUMINIUM SPANDREL PANEL TO UPTO 3.5m ABOVE FLOOR LEVEL	GLAZING: SELECTED VIRIDIAN PERFORMANCE GLASS FROM THE GREEN TINTED COLOUR RANGE SPANDREL PANEL: UPTO 4 SELECTED ANODIZED ALUMINIUM PANELS	GROUND AND FIRST FLOOR NORTH AND SOUTH FACADE
04a	CURTAIN WALL SYSTEM: 65% VISION GLASS 35% GLAZED SHADOW BOX SPANDREL	GLAZING: SELECTED VIRIDIAN PERFORMANCE GLASS FROM THE GREEN TINTED COLOUR RANGE SHADOW BOX SPANDREL: SELECTED COLOURS TO ANODIZED ALUMINIUM BACK PANS	GROUND FLOOR NORTH (FRONT) FACADE
04b	CURTAIN WALL SYSTEM: 60% VISION GLASS 40% ANODIZED ALUMINIUM SPANDREL PANEL	GLAZING: SELECTED VIRIDIAN PERFORMANCE GLASS FROM THE GREEN TINTED COLOUR RANGE SPANDREL PANEL: UPTO 4 SELECTED ANODIZED ALUMINIUM PANELS	TYPICALLY CENTRAL LIFT AND STAIR LOBBY AND ENDS OF CORRIDORS IN IPU TOWER
05	PRECAST CLADDING TO CONCRETE COLUMNS	WHITE BRIGHTONLITE CEMENT	EXPRESSED COLUMNS ON THE FRONT FAÇADE
06	SELECTED STANDING SEAM PROFILED METAL SHEET CLADDING OVER INSULATION ON LIGHTWEIGHT STEEL FRAME	SELECTED ANODIZED COLOUR	TYPICALLY EXTERNAL SERVICE RISERS, CENTRAL CORE FACADE AND PART EAST AND WEST PODIUM FACADE
07	VERTICAL ALUMINIUM SUNSHADING FINS	SELECTED ANODIZED COLOUR	SUNSHADING ON STRIP WINDOWS
08	EXTERIOR STRUCTURAL STEEL	WHITE; SEMI GLOSS	FRONT ENTRY CANOPY
09	CLEAR ROOF WITH INTEGRATED SOLAR PANELS	LAMINATED SERAPHIC GLASS OR EQUIVALENT, CUSTOM DESIGNED FRIT PATTERN	FRONT ENTRY CANOPY
10	FIXED ALUMINIUM LOUVERS	SELECTED ANODIZED COLOUR	GENERALLY PLANTROOM WALLS



A ACUTE HOSPITAL OVERALL PRECINCT SECTION A / PART SOUTH ELEVATION

0246810
1:200

THIS DOCUMENT IS THE COPYRIGHT OF BILLARD LEECE PARTNERSHIP PTY LTD
ALL INFORMATION ILLUSTRATED ON THIS DOCUMENT IS TRUE, CHECKED AND VERIFIED ON SITE
IN THE EVENT OF DISCREPANCIES REFER TO ARCHITECT PRIOR TO COMMENCEMENT OF THE WORK.
DO NOT SCALE DRAWINGS MANUALLY OR ELECTRONICALLY.

KEY PLAN

REV	DESCRIPTION OF CHANGE	DRAWN	CHECK	DATE
4	70% SCHEMATIC DESIGN ISSUE			15/10/2012
5	Costing Issue			20/11/2012
6	General Revision			23/11/2012
7	100% SD Report Issue			30/11/2012
8	DA Submission			30/11/2012
9	QS COORDINATION ISSUE			21/12/2012
10	DA SUBMISSION			01/02/2013
11	DA SUBMISSION			12/02/2013
12	GENERAL REVISION			27/02/2013
13	DA SUBMISSION			08/03/2013

STEENSENVARMING

AcOR
CONSULTANTS

Mott MacDonald

QUANTITY SURVEYOR

Davis Langdon
An AECOM Company
15 100 PACIFIC HIGHWAY P: 02 9956 8822
NORTH SYDNEY W: www.davislangdon.com/ANZ/
NSW 2060

CLIENT

NSW
GOVERNMENT

Health
Infrastructure

77 PACIFIC HIGHWAY P: 02 9978 5402
NORTH SYDNEY F: 02 8904 1377
NSW 2060 W: www.hinfra.health.nsw.gov.au

ARCHITECTS

Billard Leece Partnership Pty Ltd
Architects & Urban Planners
Studio 307, 50 Holt St
Sunny Hills 2010
NSW Australia
T +61 2 8096 4066
E info@blp.com.au
www.blp.com.au

PROJECT:

WAGGA WAGGA HEALTH SERVICES
REDEVELOPMENT
EDWARD STREET
WAGGA WAGGA, NSW, 2650

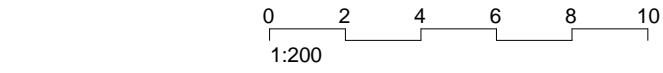
DRAWING TITLE:

ACUTE HOSPITAL PORTION B -
SECTIONS SHEET SECTION A

Drawn: NF/NS	Designed: DL/WL	Reviewed: Project Manager:
Check: RS	Design Review:	Approved: Project Director:
PROJECT NUMBER: 12602	DRAWING NUMBER:	ISSUE:
SCALE: 1 : 200@A1	AR.AH3.08.0001	13

FOR DA APPROVAL

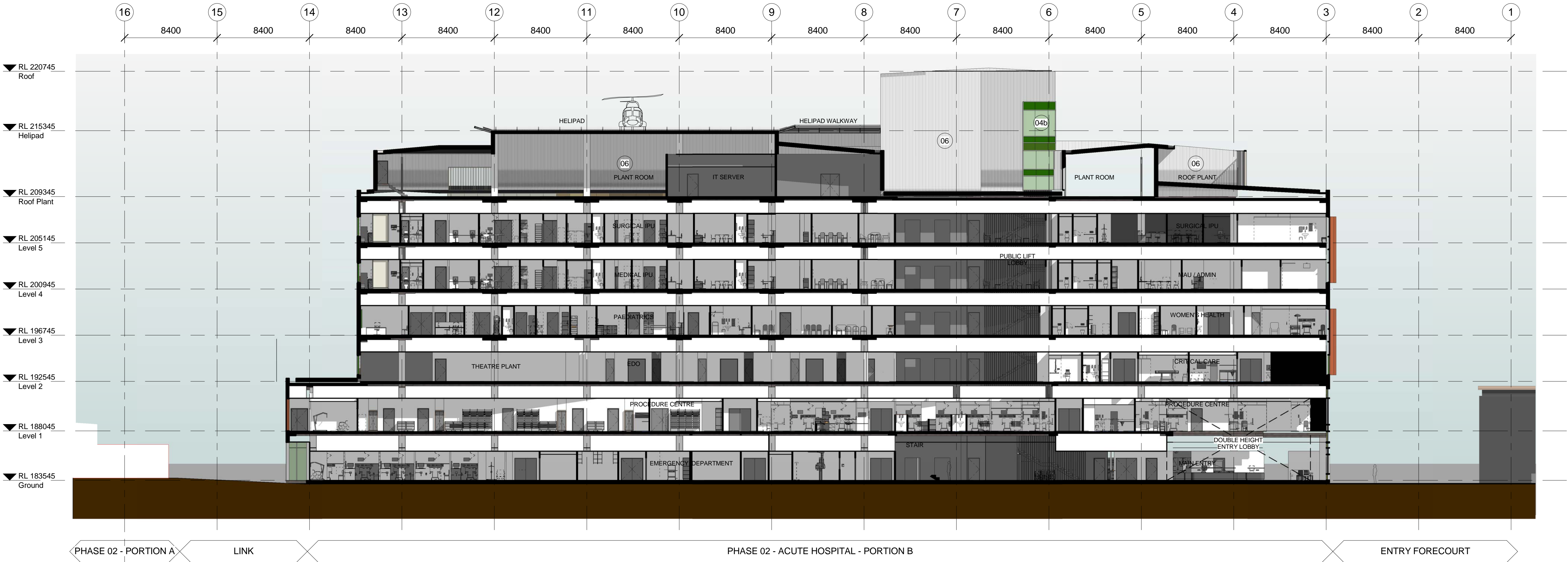
CODE	ITEM	COLOUR & FINISH	LOCATION
01a	SELECTED TERRACOTTA TILE CLADDING WITH SUSPENSION RAILS OVER MEMBRANE AND INSULATION ON LIGHTWEIGHT STEEL FRAME	ALLOW UPTO 4 COLOURS FROM THE STANDARD PALLETTE	PREDOMINANTLY ON IPU TOWER FACADE ON FLOOR LEVELS 2-5, EAST AND SOUTH FACADES OF THE PODIUM
01b	SELECTED TERRACOTTA FIXED SUNSCREEN SYSTEM OR EQUIVALENT APPROVED SYSTEM ON PROPRIETARY STEEL FRAME AS 75% OPEN SCREEN	ALLOW 2 COLOURS FROM THE STANDARD PALLETTE	TYPICALLY EXTERNAL OPEN STAIRS
02a	ANODIZED ALUMINIUM FRAMED STRIP WINDOW: 65% VISION GLASS, 35% GLAZED SHADOW BOX.	GLAZING: SELECTED VIRIDIAN PERFORMANCE GLASS FROM THE GREEN TINTED COLOUR RANGE SHADOW BOX SPANDREL: SELECTED COLOURS TO ANODIZED ALUMINIUM BACK PANS	PREDOMINANTLY ON IPU TOWER FACADE ON FLOOR LEVELS 2-5 AND FIRST FLOOR FACADE
02b	ANODIZED ALUMINIUM SPANDREL PANEL	ALLOW UP TO 4 SELECTED ANODIZED ALUMINIUM COLOURS	PREDOMINANTLY ON IPU TOWER FACADE ON FLOOR LEVELS 2-5
03a	SHOPFRONT GLAZING SYSTEM: 100% VISION GLASS TO UPTO 3.5m ABOVE FLOOR LEVEL	SELECTED VIRIDIAN PERFORMANCE GLASS FROM THE GREEN TINTED COLOUR RANGE	GROUND FLOOR NORTH (FRONT) FACADE
03b	SHOPFRONT GLAZING SYSTEM: 65% VISION GLASS; 35% ANODIZED ALUMINIUM SPANDREL PANEL TO UPTO 3.5m ABOVE FLOOR LEVEL	GLAZING: SELECTED VIRIDIAN PERFORMANCE GLASS FROM THE GREEN TINTED COLOUR RANGE SPANDREL PANEL: UPTO 4 SELECTED ANODIZED ALUMINIUM PANELS	GROUND AND FIRST FLOOR NORTH AND SOUTH FACADE
04a	CURTAIN WALL SYSTEM: 65% VISION GLASS 35% GLAZED SHADOW BOX SPANDREL	GLAZING: SELECTED VIRIDIAN PERFORMANCE GLASS FROM THE GREEN TINTED COLOUR RANGE SHADOW BOX SPANDREL: SELECTED COLOURS TO ANODIZED ALUMINIUM BACK PANS	GROUND FLOOR NORTH (FRONT) FACADE
04b	CURTAIN WALL SYSTEM: 60% VISION GLASS 40% ANODIZED ALUMINIUM SPANDREL PANEL	GLAZING: SELECTED VIRIDIAN PERFORMANCE GLASS FROM THE GREEN TINTED COLOUR RANGE SPANDREL PANEL: UPTO 4 SELECTED ANODIZED ALUMINIUM PANELS	TYPICALLY CENTRAL LIFT AND STAIR LOBBY AND ENDS OF CORRIDORS IN IPU TOWER
05	PRECAST CLADDING TO CONCRETE COLUMNS	WHITE BRIGHTONLITE CEMENT	EXPRESSED COLUMNS ON THE FRONT FACADE
06	SELECTED STANDING SEAM PROFILED METAL SHEET CLADDING OVER INSULATION ON LIGHTWEIGHT STEEL FRAME	SELECTED ANODIZED COLOUR	TYPICALLY EXTERNAL SERVICE RISERS, CENTRAL CORE FACADE AND PART EAST AND WEST PODIUM FACADE
07	VERTICAL ALUMINIUM SUNSHADING FINS	SELECTED ANODIZED COLOUR	SUNSHADING ON STRIP WINDOWS
08	EXTERIOR STRUCTURAL STEEL	WHITE; SEMI GLOSS	FRONT ENTRY CANOPY
09	CLEAR ROOF WITH INTEGRATED SOLAR PANELS	LAMINATED SERAPHIC GLASS OR EQUIVALENT, CUSTOM DESIGNED FRIT PATTERN	FRONT ENTRY CANOPY
10	FIXED ALUMINIUM LOUVERS	SELECTED ANODIZED COLOUR	GENERALLY PLANTROOM WALLS



THIS DOCUMENT IS THE COPYRIGHT OF BILLARD LEECE PARTNERSHIP PTY LTD. ALL INFORMATION ILLUSTRATED ON THIS DOCUMENT IS TRUE, CORRECT AND VERIFIED ON SITE. IN THE EVENT OF DISCREPANCIES REFER TO ARCHITECT PRIOR TO COMMENCEMENT OF THE WORK. DO NOT SCALE DRAWINGS MANUALLY OR ELECTRONICALLY.

KEY PLAN

REV	DESCRIPTION OF CHANGE	DRAWN	CHECK	DATE
3	For Information			11/10/2012
4	70% SCHEMATIC DESIGN ISSUE			15/10/2012
5	Costing Issue			20/11/2012
6	General Revision			23/11/2012
7	100% SD Report Issue			30/11/2012
8	DA Submission			30/11/2012
9	QS COORDINATION ISSUE			21/12/2012
10	DA SUBMISSION			01/02/2013
11	DA SUBMISSION			12/02/2013
12	DA SUBMISSION			08/03/2013



B ACUTE HOSPITAL OVERALL PRECINCT SECTION B

STEENSENVARMING



QUANTITY SURVEYOR
Davis Langdon
An AECOM Company
15 100 PACIFIC HIGHWAY P: 02 9956 8822
NORTH SYDNEY W: www.davislangdon.com/ANZ
NSW 2060

CLIENT
NSW Health Infrastructure
77 PACIFIC HIGHWAY P: 02 9978 5402
NORTH SYDNEY F: 02 8904 1377
NSW 2060 W: www.hinfra.health.nsw.gov.au

ARCHITECTS
Billard Leece Partnership Pty Ltd
Architects & Urban Planners
Studio 307, 50 Holt St
Surry Hills 2010
NSW Australia
T +61 2 8096 4066
E info@blp.com.au
www.blp.com.au

PROJECT:
WAGGA WAGGA HEALTH SERVICES
REDEVELOPMENT
EDWARD STREET
WAGGA WAGGA, NSW, 2650

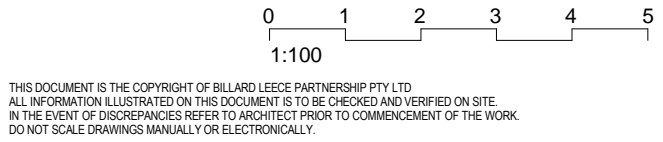
DRAWING TITLE:
ACUTE HOSPITAL PORTION B -
SECTIONS SHEET SECTION B

Drawn: NF/NS	Designed: DL/WL	Reviewed: Project Manager:
Check: NF	Design Review:	Approved: Project Director:
PROJECT NUMBER: 12602	DRAWING NUMBER:	ISSUE: AR.AH3.08.0002 12

SCALE: 1 : 200@A1

FOR DA APPROVAL

CODE	ITEM	COLOUR & FINISH	LOCATION
01a	SELECTED TERRACOTTA TILE CLADDING WITH SUSPENSION RAILS OVER MEMBRANE AND INSULATION ON LIGHTWEIGHT STEEL FRAME	ALLOW UPTO 4 COLOURS FROM THE STANDARD PALLETTE	PREDOMINANTLY ON IPU TOWER FACADE ON FLOOR LEVELS 2-5, EAST AND SOUTH FACADES OF THE PODIUM
01b	SELECTED TERRACOTTA FIXED SUNSCREEN SYSTEM OR EQUIVALENT APPROVED SYSTEM ON PROPRIETORY STEEL FRAME AS 75% OPEN SCREEN	ALLOW 2 COLOURS FROM THE STANDARD PALLETTE	TYPICALLY EXTERNAL OPEN STAIRS
02a	ANODIZED ALUMINIUM FRAMED STRIP WINDOW: 65% VISION GLASS, 35% GLAZED SHADOW BOX.	GLAZING: SELECTED VIRIDIAN PERFORMANCE GLASS FROM THE GREEN TINTED COLOUR RANGE SHADOW BOX SPANDREL: SELECTED COLOURS TO ANODIZED ALUMINIUM BACK PANS	PREDOMINANTLY ON IPU TOWER FACADE ON FLOOR LEVELS 2-5 AND FIRST FLOOR FACADE
02b	ANODIZED ALUMINIUM SPANDREL PANEL	ALLOW UP TO 4 SELECTED ANODIZED ALUMINIUM COLOURS	PREDOMINANTLY ON IPU TOWER FACADE ON FLOOR LEVELS 2-5
03a	SHOPFRONT GLAZING SYSTEM: 100% VISION GLASS TO UPTO 3.5m ABOVE FLOOR LEVEL	SELECTED VIRIDIAN PERFORMANCE GLASS FROM THE GREEN TINTED COLOUR RANGE	GROUND FLOOR NORTH (FRONT) FACADE
03b	SHOPFRONT GLAZING SYSTEM: 65% VISION GLASS; 35% ANODIZED ALUMINIUM SPANDREL PANEL TO UPTO 3.5m ABOVE FLOOR LEVEL	GLAZING: SELECTED VIRIDIAN PERFORMANCE GLASS FROM THE GREEN TINTED COLOUR RANGE SPANDREL PANEL: UPTO 4 SELECTED ANODIZED ALUMINIUM PANELS	GROUND AND FIRST FLOOR NORTH AND SOUTH FACADE
04a	CURTAIN WALL SYSTEM: 65% VISION GLASS 35% GLAZED SHADOW BOX SPANDREL	GLAZING: SELECTED VIRIDIAN PERFORMANCE GLASS FROM THE GREEN TINTED COLOUR RANGE SHADOW BOX SPANDREL: SELECTED COLOURS TO ANODIZED ALUMINIUM BACK PANS	GROUND FLOOR NORTH (FRONT) FACADE
04b	CURTAIN WALL SYSTEM: 60% VISION GLASS 40% ANODIZED ALUMINIUM SPANDREL PANEL	GLAZING: SELECTED VIRIDIAN PERFORMANCE GLASS FROM THE GREEN TINTED COLOUR RANGE SPANDREL PANEL: UPTO 4 SELECTED ANODIZED ALUMINIUM PANELS	TYPICALLY CENTRAL LIFT AND STAIR LOBBY AND ENDS OF CORRIDORS IN IPU TOWER
05	PRECAST CLADDING TO CONCRETE COLUMNS	WHITE BRIGHTONLITE CEMENT	EXPRESSED COLUMNS ON THE FRONT FAÇADE
06	SELECTED STANDING SEAM PROFILED METAL SHEET CLADDING OVER INSULATION ON LIGHTWEIGHT STEEL FRAME	SELECTED ANODIZED COLOUR	TYPICALLY EXTERNAL SERVICE RISERS; CENTRAL CORE FACADE AND PART EAST AND WEST PODIUM FACADE
07	VERTICAL ALUMINIUM SUNSHADING FINS	SELECTED ANODIZED COLOUR	SUNSHADING ON STRIP WINDOWS
08	EXTERIOR STRUCTURAL STEEL	WHITE; SEMI GLOSS	FRONT ENTRY CANOPY
09	CLEAR ROOF WITH INTEGRATED SOLAR PANELS	LAMINATED SERAPHIC GLASS OR EQUIVALENT. CUSTOM DESIGNED FRIT PATTERN	FRONT ENTRY CANOPY
10	FIXED ALUMINIUM LOUVERS	SELECTED ANODIZED COLOUR	GENERALLY PLANTROOM WALLS



KEY PLAN

REV	DESCRIPTION OF CHANGE	DRAWN	CHECK	DATE
1	Costing Issue			20/11/2012
2	General Revision			23/11/2012
3	100% SD Report Issue			30/11/2012
4	DA Submission			30/11/2012
5	DS COORDINATION ISSUE			21/12/2012
6	DA SUBMISSION			01/02/2013
7	DA SUBMISSION			12/02/2013
8	DA SUBMISSION			08/03/2013



C ACUTE HOSPITAL OVERALL PRECINCT SECTION C

STEENSENVARMING



QUANTITY SURVEYOR
Davis Langdon
An AECOM Company
15 100 PACIFIC HIGHWAY P: 02 9956 8822
NORTH SYDNEY W: www.davislangdon.com/ANZ/
NSW 2060

CLIENT
NSW Health Infrastructure
GOVERNMENT
77 PACIFIC HIGHWAY P: 02 9578 5402
NORTH SYDNEY F: 02 8904 1377
NSW 2060 W: www.hinfra.health.nsw.gov.au

ARCHITECTS
BLP
Billard Leece Partnership Pty Ltd
Architects & Urban Planners
Studio 307, 50 Holt St
Sunny Hills 2010
NSW Australia
T +61 2 8096 4066
E info@blp.com.au
www.blp.com.au

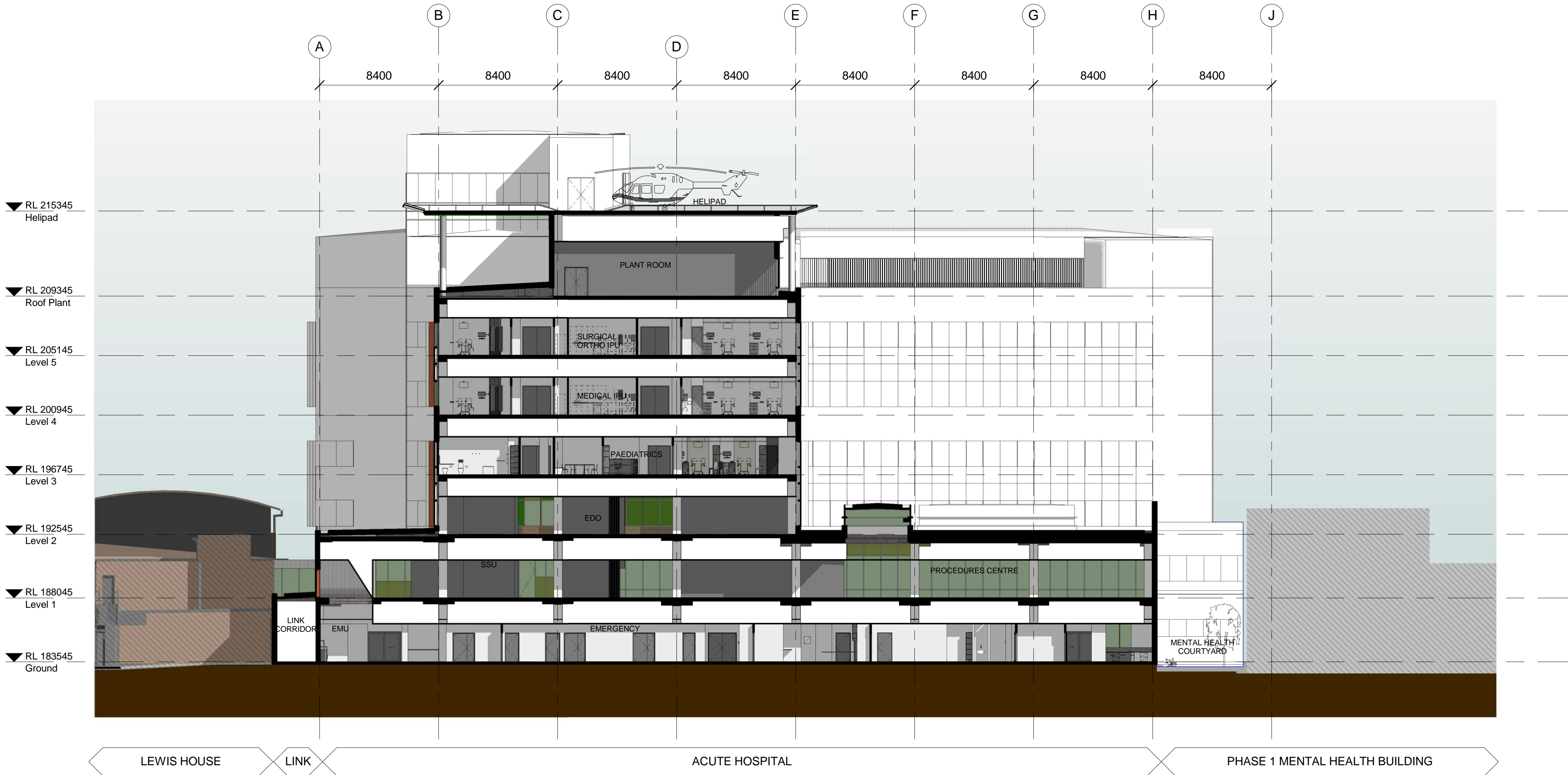
PROJECT:
WAGGA WAGGA HEALTH SERVICES
REDEVELOPMENT
EDWARD STREET
WAGGA WAGGA, NSW, 2650

DRAWING TITLE:
ACUTE HOSPITAL PORTION B -
SECTIONS SHEET SECTION C

Drawn: NF/NS	Designed: DL/WL	Reviewed: Project Manager:
Check: RS	Design Review:	Approved: Project Director:
PROJECT NUMBER: 12602	DRAWING NUMBER:	ISSUE: AR.AH3.08.0003 8
SCALE: 1 : 200@A1		

FOR DA APPROVAL

CODE	ITEM	COLOUR & FINISH	LOCATION
01a	SELECTED TERRACOTTA TILE CLADDING WITH SUSPENSION RAILS OVER MEMBRANE AND INSULATION ON LIGHTWEIGHT STEEL FRAME	ALLOW UPTO 4 COLOURS FROM THE STANDARD PALLETTE	PREDOMINANTLY ON IPU TOWER FACADE ON FLOOR LEVELS 2-5, EAST AND SOUTH FACADES OF THE PODIUM
01b	SELECTED TERRACOTTA FIXED SUNSCREEN SYSTEM OR EQUIVALENT APPROVED SYSTEM ON PROPRIETARY STEEL FRAME AS 75% OPEN SCREEN	ALLOW 2 COLOURS FROM THE STANDARD PALLETTE	TYPICALLY EXTERNAL OPEN STAIRS
02a	ANODIZED ALUMINIUM FRAMED STRIP WINDOW: 65% VISION GLASS, 35% GLAZED SHADOW BOX.	GLAZING: SELECTED VIRIDIAN PERFORMANCE GLASS FROM THE GREEN TINTED COLOUR RANGE SHADOW BOX SPANDREL: SELECTED COLOURS TO ANODIZED ALUMINIUM BACK PANS	PREDOMINANTLY ON IPU TOWER FACADE ON FLOOR LEVELS 2-5 AND FIRST FLOOR FACADE
02b	ANODIZED ALUMINIUM SPANDREL PANEL	ALLOW UP TO 4 SELECTED ANODIZED ALUMINIUM COLOURS	PREDOMINANTLY ON IPU TOWER FACADE ON FLOOR LEVELS 2-5
03a	SHOPFRONT GLAZING SYSTEM: 100% VISION GLASS TO UPTO 3.5m ABOVE FLOOR LEVEL	SELECTED VIRIDIAN PERFORMANCE GLASS FROM THE GREEN TINTED COLOUR RANGE	GROUND FLOOR NORTH (FRONT) FACADE
03b	SHOPFRONT GLAZING SYSTEM: 65% VISION GLASS; 35% ANODIZED ALUMINIUM SPANDREL PANEL TO UPTO 3.5m ABOVE FLOOR LEVEL	GLAZING: SELECTED VIRIDIAN PERFORMANCE GLASS FROM THE GREEN TINTED COLOUR RANGE SPANDREL PANEL: UPTO 4 SELECTED ANODIZED ALUMINIUM PANELS	GROUND AND FIRST FLOOR NORTH AND SOUTH FACADE
04a	CURTAIN WALL SYSTEM: 65% VISION GLASS 35% GLAZED SHADOW BOX SPANDREL	GLAZING: SELECTED VIRIDIAN PERFORMANCE GLASS FROM THE GREEN TINTED COLOUR RANGE SHADOW BOX SPANDREL: SELECTED COLOURS TO ANODIZED ALUMINIUM BACK PANS	GROUND FLOOR NORTH (FRONT) FACADE
04b	CURTAIN WALL SYSTEM: 60% VISION GLASS 40% ANODIZED ALUMINIUM SPANDREL PANEL	GLAZING: SELECTED VIRIDIAN PERFORMANCE GLASS FROM THE GREEN TINTED COLOUR RANGE SPANDREL PANEL: UPTO 4 SELECTED ANODIZED ALUMINIUM PANELS	TYPICALLY CENTRAL LIFT AND STAIR LOBBY AND ENDS OF CORRIDORS IN IPU TOWER
05	PRECAST CLADDING TO CONCRETE COLUMNS	WHITE BRIGHTONLITE CEMENT	EXPRESSED COLUMNS ON THE FRONT FAÇADE
06	SELECTED STANDING SEAM PROFILED METAL SHEET CLADDING OVER INSULATION ON LIGHTWEIGHT STEEL FRAME	SELECTED ANODIZED COLOUR	TYPICALLY EXTERNAL SERVICE RISERS, CENTRAL CORE FACADE AND PART EAST AND WEST PODIUM FACADE
07	VERTICAL ALUMINIUM SUNSHADING FINS	SELECTED ANODIZED COLOUR	SUNSHADING ON STRIP WINDOWS
08	EXTERIOR STRUCTURAL STEEL	WHITE; SEMI GLOSS	FRONT ENTRY CANOPY
09	CLEAR ROOF WITH INTEGRATED SOLAR PANELS	LAMINATED SERAPHIC GLASS OR EQUIVALENT, CUSTOM DESIGNED FRIT PATTERN	FRONT ENTRY CANOPY
10	FIXED ALUMINIUM LOUVERS	SELECTED ANODIZED COLOUR	GENERALLY PLANTROOM WALLS



D ACUTE HOSPITAL OVERALL PRECINCT SECTION D

012345
1:100

THIS DOCUMENT IS THE COPYRIGHT OF BILLARD LEECE PARTNERSHIP PTY LTD. ALL INFORMATION ILLUSTRATED ON THIS DOCUMENT IS TRUE, CHECKED AND VERIFIED ON SITE. IN THE EVENT OF DISCREPANCIES REFER TO ARCHITECT PRIOR TO COMMENCEMENT OF THE WORK. DO NOT SCALE DRAWINGS MANUALLY OR ELECTRONICALLY.

KEY PLAN

REV	DESCRIPTION OF CHANGE	DRAWN	CHECK	DATE
1	Costing Issue			20/11/2012
2	General Revision			23/11/2012
3	100% SD Report Issue			30/11/2012
4	DA Submission			30/11/2012
5	DS COORDINATION ISSUE			21/12/2012
6	DA SUBMISSION			01/02/2013
7	DA SUBMISSION			12/02/2013
8	DA SUBMISSION			08/03/2013

STEENSENVARMING

AcOR
CONSULTANTS

Mott MacDonald

QUANTITY SURVEYOR

Davis Langdon
An AECOM Company
15 100 PACIFIC HIGHWAY P: 02 9956 8822
NORTH SYDNEY F: 02 8904 1377
NSW 2060 W: www.davislangdon.com/ANZ/

CLIENT

NSW
GOVERNMENT

Health
Infrastructure

77 PACIFIC HIGHWAY P: 02 9978 5402
NORTH SYDNEY F: 02 8904 1377
NSW 2060 W: www.hinfra.health.nsw.gov.au

ARCHITECTS

Billard Leece Partnership Pty Ltd
Architects & Urban Planners
Studio 307, 50 Holt St
Sunny Hills 2010
NSW Australia
T +61 2 8096 4066
E info@blp.com.au
www.blp.com.au

PROJECT:

WAGGA WAGGA HEALTH SERVICES
REDEVELOPMENT
EDWARD STREET
WAGGA WAGGA, NSW, 2650

DRAWING TITLE:

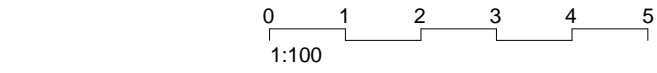
ACUTE HOSPITAL PORTION B -
SECTIONS SHEET SECTION D

Drawn: NS/NF	Designed: DL/WL	Reviewed: Project Manager:
Check: NF	Design Review:	Approved: Project Director:
PROJECT NUMBER: 12602	DRAWING NUMBER:	ISSUE:
SCALE: 1 : 200@A1	AR.AH3.08.0004	8

FOR DA APPROVAL

A1

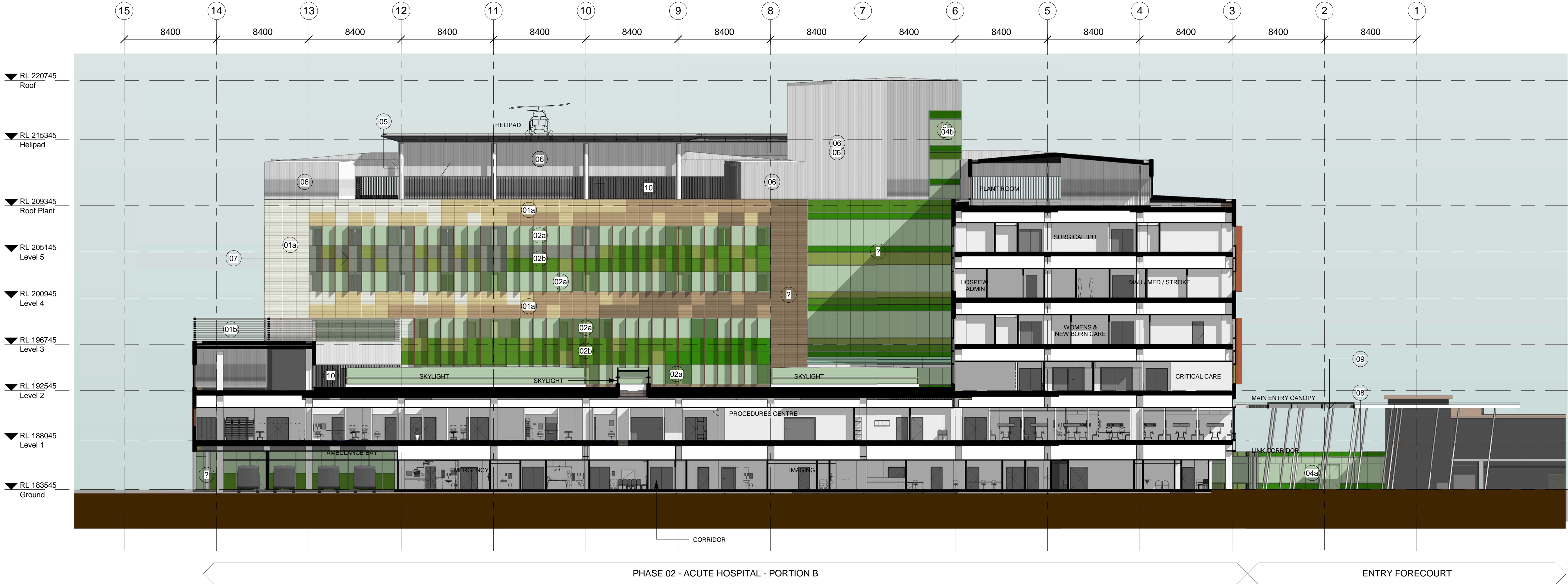
CODE	ITEM	COLOUR & FINISH	LOCATION
01a	SELECTED TERRACOTTA TILE CLADDING WITH SUSPENSION RAILS OVER MEMBRANE AND INSULATION ON LIGHTWEIGHT STEEL FRAME	ALLOW UPTO 4 COLOURS FROM THE STANDARD PALLETTE	PREDOMINANTLY ON IPU TOWER FACADE ON FLOOR LEVELS 2-5, EAST AND SOUTH FACADES OF THE PODIUM
01b	SELECTED TERRACOTTA FIXED SUNSCREEN SYSTEM OR EQUIVALENT APPROVED SYSTEM ON PROPRIETARY STEEL FRAME AS 75% OPEN SCREEN	ALLOW 2 COLOURS FROM THE STANDARD PALLETTE	TYPICALLY EXTERNAL OPEN STAIRS
02a	ANODIZED ALUMINIUM FRAMED STRIP WINDOW: 65% VISION GLASS, 35% GLAZED SHADOW BOX.	GLAZING: SELECTED VIRIDIAN PERFORMANCE GLASS FROM THE GREEN TINTED COLOUR RANGE SHADOW BOX SPANDREL: SELECTED COLOURS TO ANODIZED ALUMINIUM BACK PANS	PREDOMINANTLY ON IPU TOWER FACADE ON FLOOR LEVELS 2-5 AND FIRST FLOOR FACADE
02b	ANODIZED ALUMINIUM SPANDREL PANEL	ALLOW UP TO 4 SELECTED ANODIZED ALUMINIUM COLOURS	PREDOMINANTLY ON IPU TOWER FACADE ON FLOOR LEVELS 2-5
03a	SHOPFRONT GLAZING SYSTEM: 100% VISION GLASS TO UPTO 3.5m ABOVE FLOOR LEVEL	SELECTED VIRIDIAN PERFORMANCE GLASS FROM THE GREEN TINTED COLOUR RANGE	GROUND FLOOR NORTH (FRONT) FACADE
03b	SHOPFRONT GLAZING SYSTEM: 65% VISION GLASS; 35% ANODIZED ALUMINIUM SPANDREL PANEL TO UPTO 3.5m ABOVE FLOOR LEVEL	GLAZING: SELECTED VIRIDIAN PERFORMANCE GLASS FROM THE GREEN TINTED COLOUR RANGE SPANDREL PANEL: UPTO 4 SELECTED ANODIZED ALUMINIUM PANELS	GROUND AND FIRST FLOOR NORTH AND SOUTH FACADE
04a	CURTAIN WALL SYSTEM: 65% VISION GLASS 35% GLAZED SHADOW BOX SPANDREL	GLAZING: SELECTED VIRIDIAN PERFORMANCE GLASS FROM THE GREEN TINTED COLOUR RANGE SHADOW BOX SPANDREL: SELECTED COLOURS TO ANODIZED ALUMINIUM BACK PANS	GROUND FLOOR NORTH (FRONT) FACADE
04b	CURTAIN WALL SYSTEM: 60% VISION GLASS 40% ANODIZED ALUMINIUM SPANDREL PANEL	GLAZING: SELECTED VIRIDIAN PERFORMANCE GLASS FROM THE GREEN TINTED COLOUR RANGE SPANDREL PANEL: UPTO 4 SELECTED ANODIZED ALUMINIUM PANELS	TYPICALLY CENTRAL LIFT AND STAIR LOBBY AND ENDS OF CORRIDORS IN IPU TOWER
05	PRECAST CLADDING TO CONCRETE COLUMNS	WHITE BRIGHTONLITE CEMENT	EXPRESSED COLUMNS ON THE FRONT FAÇADE
06	SELECTED STANDING SEAM PROFILED METAL SHEET CLADDING OVER INSULATION ON LIGHTWEIGHT STEEL FRAME	SELECTED ANODIZED COLOUR	TYPICALLY EXTERNAL SERVICE RISERS, CENTRAL CORE FACADE AND PART EAST AND WEST PODIUM FACADE
07	VERTICAL ALUMINIUM SUNSHADING FINS	SELECTED ANODIZED COLOUR	SUNSHADING ON STRIP WINDOWS
08	EXTERIOR STRUCTURAL STEEL	WHITE; SEMI GLOSS	FRONT ENTRY CANOPY
09	CLEAR ROOF WITH INTEGRATED SOLAR PANELS	LAMINATED SERAPHIC GLASS OR EQUIVALENT, CUSTOM DESIGNED FRIT PATTERN	FRONT ENTRY CANOPY
10	FIXED ALUMINIUM LOUVERS	SELECTED ANODIZED COLOUR	GENERALLY PLANTROOM WALLS



THIS DOCUMENT IS THE COPYRIGHT OF BILLARD LEECE PARTNERSHIP PTY LTD. ALL INFORMATION ILLUSTRATED ON THIS DOCUMENT IS TRUE, CHECKED AND VERIFIED ON SITE. IN THE EVENT OF DISCREPANCIES REFER TO ARCHITECT PRIOR TO COMMENCEMENT OF THE WORK. DO NOT SCALE DRAWINGS MANUALLY OR ELECTRONICALLY.

KEY PLAN

REV	DESCRIPTION OF CHANGE	DRAWN	CHECK	DATE
1	Costing Issue			20/11/2012
2	General Revision			23/11/2012
3	100% SD Report Issue			30/11/2012
4	DA Submission			30/11/2012
5	DS COORDINATION ISSUE			21/12/2012
6	DA SUBMISSION			01/02/2013
7	DA SUBMISSION			12/02/2013
8	GENERAL REVISION			27/02/2013
9	DA SUBMISSION			08/03/2013



E ACUTE HOSPITAL OVERALL PRECINCT SECTION E / PART EAST ELEVATION

STEENSENVARMING



QUANTITY SURVEYOR
Davis Langdon
An AECOM Company
15 100 PACIFIC HIGHWAY NORTH SYDNEY NSW 2060
P: 02 9956 8822
W: www.davislangdon.com/ANZ

CLIENT
NSW Health Infrastructure
77 PACIFIC HIGHWAY NORTH SYDNEY NSW 2060
P: 02 9578 5402
F: 02 8904 1377
W: www.hinfra.health.nsw.gov.au

ARCHITECTS
Billard Leece Partnership Pty Ltd
Architects & Urban Planners
Studio 307, 50 Holt St
Surry Hills 2010
NSW Australia
T +61 2 8096 4066
E info@blp.com.au
www.blp.com.au

PROJECT:
WAGGA WAGGA HEALTH SERVICES
REDEVELOPMENT
EDWARD STREET
WAGGA WAGGA, NSW, 2650

DRAWING TITLE:
ACUTE HOSPITAL PORTION B -
SECTIONS SHEET SECTION E

Drawn: NS/NF	Designed: DL/WL	Reviewed: Project Manager:
Check: RS	Design Review:	Approved: Project Director:
PROJECT NUMBER: 12602	DRAWING NUMBER:	ISSUE: AR.AH3.08.0005 9
SCALE: 1 : 200@A1		

FOR DA APPROVAL