



① ACUTE HOSPITAL PORTION B - MAIN AERIAL VIEW

THIS DOCUMENT IS THE COPYRIGHT OF BILLARD LEECE PARTNERSHIP PTY LTD.
ALL INFORMATION CONTAINED IN THIS DOCUMENT IS TRUE, CORRECT AND VERIFIED ON SITE.
IN THE EVENT OF DISCREPANCIES HERE TO ARCHITECT PRIOR TO COMMENCEMENT OF THE WORK.
DO NOT SCALE DRAWINGS MANUALLY OR ELECTRONICALLY.

KEY PLAN

REV	DESCRIPTION OF CHANGE	DRAWN	CHECK	DATE
1	100% SD Report Issue			30/11/12
2	DA SUBMISSION			30/11/2012
3	DA SUBMISSION			01/02/2013
4	DA SUBMISSION			12/02/2013
5	General Revisions			27/02/2013
6	DA SUBMISSION			08/03/2013

STEENSENVARMING



QUANTITY SURVEYOR
Davis Langdon
An AECOM Company
LS 100 PACIFIC HIGHWAY P: 02 9956 8822
NORTH SYDNEY W: www.davislangdon.com/ANZ/
NSW 2060

CLIENT
NSW Health Infrastructure
77 PACIFIC HIGHWAY P: 02 9578 5402
NORTH SYDNEY F: 02 8904 1377
NSW 2060 W: www.hinfra.health.nsw.gov.au

ARCHITECTS
BLP Billard Leece Partnership Pty Ltd
Architects & Urban Planners
Studio 307, 50 Holt St
Sunny Hills 2010
NSW Australia
T +61 2 8096 4066
E info@blp.com.au
www.blp.com.au

PROJECT:
WAGGA WAGGA HEALTH SERVICES
REDEVELOPMENT
EDWARD STREET
WAGGA WAGGA, NSW, 2650

DRAWING TITLE:
ACUTE HOSPITAL PORTION B -
EXTERNAL RENDERS SHEET 01
MAIN AERIAL VIEW

Drawn: Author	Designed: Designer	Reviewed: Project Manager
Checked: Checker	Design Reviewer: Approved Project Director	ISSUE:
PROJECT NUMBER: 12602	DRAWING NUMBER: AR.AH3.97.0001	6
SCALE: NTS@B1		

FOR DA APPROVAL



1 ACUTE HOSPITAL PORTION B - VIEW OF MAIN FACADE & ENTRY FORECOURT

THIS DOCUMENT IS THE COPYRIGHT OF BILLARD LEECE PARTNERSHIP PTY LTD.
ALL INFORMATION CONTAINED IN THIS DOCUMENT IS TRUE, CORRECT AND VERIFIED ON SITE.
IN THE EVENT OF DISCREPANCIES BETWEEN THE ARCHITECT'S DRAWINGS AND THE WORK, THE ARCHITECT'S DRAWINGS SHALL PREVAIL.
DO NOT SCALE DRAWINGS MANUALLY OR ELECTRONICALLY.

KEY PLAN				
REV	DESCRIPTION OF CHANGE	DRAWN	CHECK	DATE
1	General Revisions			26/11/12
2	100% SD Report Issue			30/11/12
3	DA SUBMISSION			30/11/2012
4	DA SUBMISSION			01/02/2013
5	DA SUBMISSION			12/02/2013
6	General Revisions			27/02/2013
7	DA SUBMISSION			08/03/2013

STEENSENVARMING



QUANTITY SURVEYOR
Davis Langdon
An AECOM Company
LS 100 PACIFIC HIGHWAY P: 02 9956 8822
NORTH SYDNEY W: www.davislangdon.com/ANZ/
NSW 2060

CLIENT
NSW GOVERNMENT **Health Infrastructure**
77 PACIFIC HIGHWAY P: 02 9578 5402
NORTH SYDNEY F: 02 8904 1377
NSW 2060 W: www.hinfra.health.nsw.gov.au

ARCHITECTS
Billard Leece Partnership Pty Ltd
Architects & Urban Planners
Studio 307, 50 Holt St
Sunny Hills 2010
NSW Australia
T +61 2 8096 4066
E info@blp.com.au
www.blp.com.au

PROJECT:
WAGGA WAGGA HEALTH SERVICES
REDEVELOPMENT
EDWARD STREET
WAGGA WAGGA, NSW, 2650

DRAWING TITLE:
ACUTE HOSPITAL PORTION B -
EXTERNAL RENDERS SHEET 02
VIEW OF MAIN FACADE & ENTRY
FORECOURT

Drawn: Author	Designed: Designer	Reviewed: Project Manager
Drawing Checker: Checker	Design Reviewer: Project Director	Approved: Project Director
PROJECT NUMBER: 12602	DRAWING NUMBER: AR.AH3.97.0002	ISSUE: 7
SCALE: NTS@B1		

FOR DA APPROVAL



1 ACUTE HOSPITAL PORTION B - VIEW OF MAIN ENTRY

THIS DOCUMENT IS THE COPYRIGHT OF BILLARD LEECE PARTNERSHIP PTY LTD.
ALL INFORMATION CONTAINED IN THIS DOCUMENT IS TRUE, CORRECT AND VERIFIED ON SITE.
IN THE EVENT OF DISCREPANCIES BETWEEN THIS DOCUMENT AND THE PROJECT, THIS DOCUMENT SHALL PREVAIL.
DO NOT SCALE DRAWINGS MANUALLY OR ELECTRONICALLY.

KEY PLAN

REV	DESCRIPTION OF CHANGE	DRAWN	CHECK	DATE
1	100% SD Report Issue			30/11/12
2	DA SUBMISSION			30/11/2012
3	DA SUBMISSION			01/02/2013
4	DA SUBMISSION			12/02/2013
5	General Revisions			27/02/2013
6	DA SUBMISSION			08/03/2013

STEENSENVARMING



QUANTITY SURVEYOR
Davis Langdon
An AECOM Company
LS 100 PACIFIC HIGHWAY NORTH SYDNEY NSW 2060
P: 02 9956 8822
W: www.davislangdon.com/ANZ/

CLIENT
NSW GOVERNMENT
Health Infrastructure
77 PACIFIC HIGHWAY NORTH SYDNEY NSW 2060
P: 02 9578 5402
F: 02 8904 1377
W: www.hinfra.health.nsw.gov.au

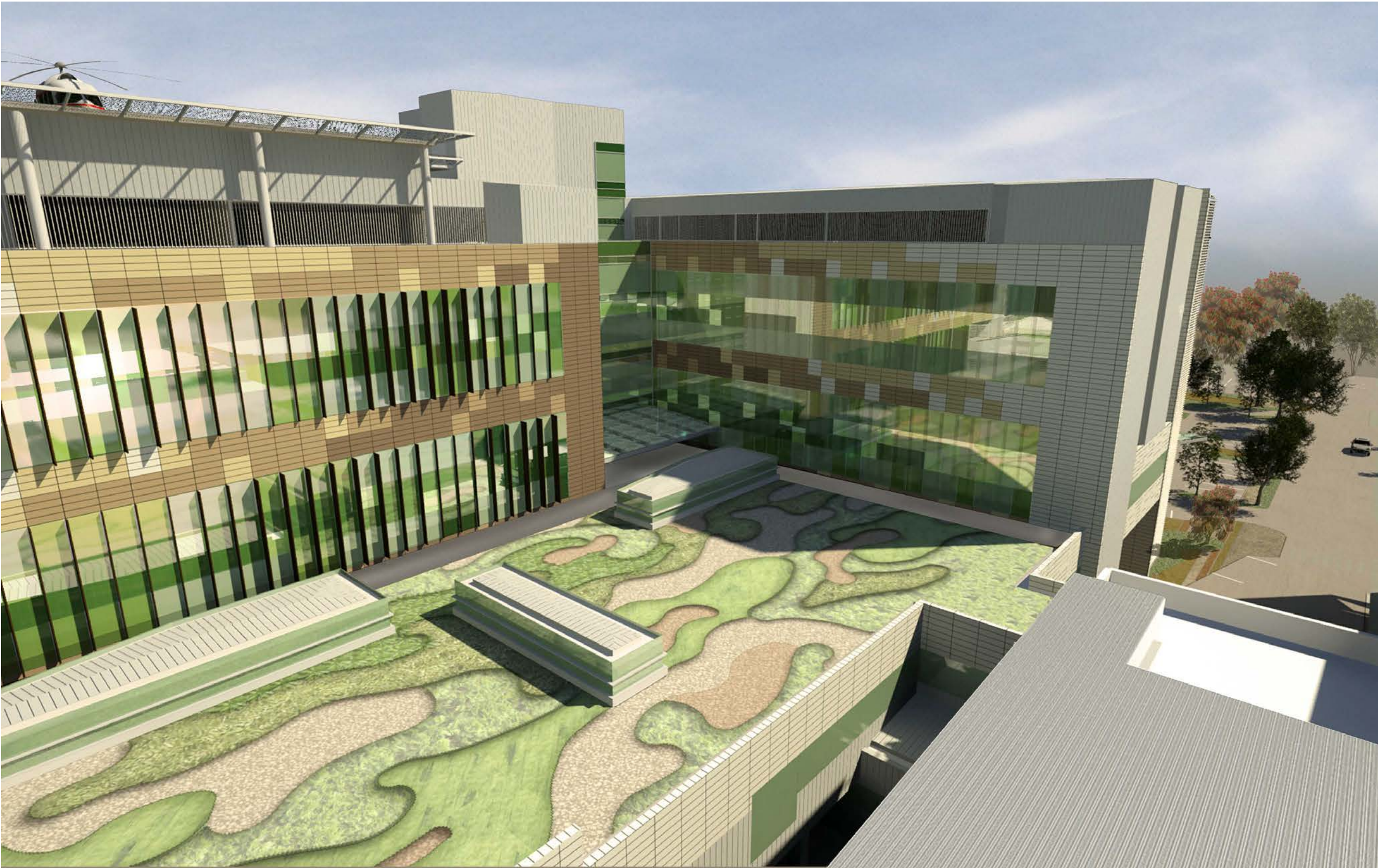
ARCHITECTS
BLP
Billard Leece Partnership Pty Ltd
Architects & Urban Planners
Studio 307, 50 Holt St
Sunny Hills 2010
NSW Australia
T +61 2 8096 4066
E info@blp.com.au
www.blp.com.au

PROJECT:
WAGGA WAGGA HEALTH SERVICES
REDEVELOPMENT
EDWARD STREET
WAGGA WAGGA, NSW, 2650

DRAWING TITLE:
ACUTE HOSPITAL PORTION B -
EXTERNAL RENDERS SHEET 03
VIEW OF MAIN ENTRY

Drawn: Author	Designed: Designer	Reviewed: Project Manager
Checked: Checker	Design Review: Approved Project Director	Issue:
PROJECT NUMBER: 12602	DRAWING NUMBER: AR.AH3.97.0003	ISSUE: 6
SCALE: NTS@B1		

FOR DA APPROVAL



① ACUTE HOSPITAL PORTION B - AERIAL VIEW OF PODIUM ROOF

THIS DOCUMENT IS THE COPYRIGHT OF BILLARD LEECE PARTNERSHIP PTY LTD.
ALL INFORMATION CONTAINED IN THIS DOCUMENT IS TO BE CHECKED AND VERIFIED ON SITE
IN THE EVENT OF DISCREPANCIES HERE TO ARCHITECT PRIOR TO COMMENCEMENT OF THE WORK.
DO NOT SCALE DRAWINGS MANUALLY OR ELECTRONICALLY.

KEY PLAN

REV	DESCRIPTION OF CHANGE	DRAWN	CHECK	DATE
1	100% SD Report Issue			30/11/12
2	DA SUBMISSION			30/11/2012
3	DA SUBMISSION			01/02/2013
4	DA SUBMISSION			12/02/2013
5	General Revisions			27/02/2013
6	DA SUBMISSION			08/03/2013

STEENSENVARMING



QUANTITY SURVEYOR
Davis Langdon
An AECOM Company
L5 100 PACIFIC HIGHWAY P: 02 9956 8822
NORTH SYDNEY W: www.davislangdon.com/ANZ/
NSW 2060

CLIENT
NSW GOVERNMENT | **Health Infrastructure**
77 PACIFIC HIGHWAY P: 02 9578 5402
NORTH SYDNEY F: 02 8904 1377
NSW 2060 W: www.hinfra.health.nsw.gov.au

ARCHITECTS
BLP | Billard Leece Partnership Pty Ltd
Architects & Urban Planners
Studio 307, 50 Holt St
Sunny Hills 2010
NSW Australia
T +61 2 8096 4066
E info@blp.com.au
www.blp.com.au

PROJECT:
WAGGA WAGGA HEALTH SERVICES
REDEVELOPMENT
EDWARD STREET
WAGGA WAGGA, NSW, 2650

DRAWING TITLE:
ACUTE HOSPITAL PORTION B -
EXTERNAL RENDERS SHEET 04
AERIAL VIEW OF PODIUM ROOF

Drawn: Author	Designed: Designer	Reviewed: Project Manager
Checked: Checker	Design Reviewer	Approved: Project Director
PROJECT NUMBER: 12602	DRAWING NUMBER: AR.AH3.97.0004	ISSUE: 6
SCALE: NTS@B1		

FOR DA APPROVAL



1 ACUTE HOSPITAL PORTION B - NORTH EAST AERIAL VIEW

THIS DOCUMENT IS THE COPYRIGHT OF BILLARD LEECE PARTNERSHIP PTY LTD.
ALL INFORMATION CONTAINED IN THIS DOCUMENT IS TRUE, CORRECT AND VERIFIED ON SITE.
IN THE EVENT OF DISCREPANCIES HEREIN TO BE RECTIFIED PRIOR TO COMMENCEMENT OF THE WORK.
DO NOT SCALE DRAWINGS MANUALLY OR ELECTRONICALLY.

KEY PLAN

REV	DESCRIPTION OF CHANGE	DRAWN	CHECK	DATE
1	100% SD Report Issue			30/11/12
2	DA SUBMISSION			30/11/2012
3	DA SUBMISSION			01/02/2013
4	DA SUBMISSION			12/02/2013
5	General Revisions			27/02/2013
6	DA SUBMISSION			08/03/2013

STEENSENVARMING



QUANTITY SURVEYOR
Davis Langdon
An AECOM Company
L5 100 PACIFIC HIGHWAY P: 02 9956 8822
NORTH SYDNEY W: www.davislangdon.com/ANZ/
NSW 2060

CLIENT
NSW GOVERNMENT **Health Infrastructure**
77 PACIFIC HIGHWAY P: 02 9578 5402
NORTH SYDNEY F: 02 8904 1377
NSW 2060 W: www.hinfra.health.nsw.gov.au

ARCHITECTS
BLP Billard Leece Partnership Pty Ltd
Architects & Urban Planners
Studio 307, 50 Holt St
Sunny Hills 2010
NSW Australia
T +61 2 8096 4066
E info@blp.com.au
www.blp.com.au

PROJECT:
WAGGA WAGGA HEALTH SERVICES
REDEVELOPMENT
EDWARD STREET
WAGGA WAGGA, NSW, 2650

DRAWING TITLE:
ACUTE HOSPITAL PORTION B - NE
AERIAL VIEW

Drawn: Author	Designed: Designer	Reviewed: Project Manager
Checked: Checker	Design Reviewer: Approved: Project Director	Issue:
PROJECT NUMBER: 12602	DRAWING NUMBER: AR.AH3.97.0005	6
SCALE: NTS @ A3		

FOR DA APPROVAL



① ACUTE HOSPITAL PORTION B - SOUTH EAST AERIAL VIEW

THIS DOCUMENT IS THE COPYRIGHT OF BILLARD LEECE PARTNERSHIP PTY LTD.
ALL INFORMATION CONTAINED IN THIS DOCUMENT IS TRUE, CORRECT AND VERIFIED ON SITE.
IN THE EVENT OF DISCREPANCIES BETWEEN THE DRAWING AND THE VERIFICATION, THE DRAWING SHALL PREVAIL.
DO NOT SCALE DRAWINGS MANUALLY OR ELECTRONICALLY.

KEY PLAN					
REV	DESCRIPTION OF CHANGE	DRAWN	CHECK	DATE	
1	100% SD Report Issue			30/11/12	
2	DA SUBMISSION			30/11/2012	
3	DA SUBMISSION			01/02/2013	
4	DA SUBMISSION			12/02/2013	
5	General Revisions			27/02/2013	
6	DA SUBMISSION			08/03/2013	

STEENSENVARMING



Davis Langdon
An AECOM Company
15 100 PACIFIC HIGHWAY P: 02 9956 8822
NORTH SYDNEY W: www.davislangdon.com/ANZ/
NSW 2060

NSW GOVERNMENT **Health Infrastructure**
77 PACIFIC HIGHWAY P: 02 9578 5402
NORTH SYDNEY F: 02 8504 1377
NSW 2060 W: www.hinfra.health.nsw.gov.au

ARCHITECTS
Billard Leece Partnership Pty Ltd
Architects & Urban Planners
Studio 307, 50 Holt St
Sunny Hills 2010
NSW Australia
T +61 2 8096 4066
E info@blp.com.au
www.blp.com.au

PROJECT:
WAGGA WAGGA HEALTH SERVICES
REDEVELOPMENT
EDWARD STREET
WAGGA WAGGA, NSW, 2650

DRAWING TITLE:
ACUTE HOSPITAL PORTION B - SE
AERIAL VIEW

Drawn: Author	Designed: Designer	Reviewed: Project Manager
Checked: Checker	Design Review: Approved: Project Director	Issue:
PROJECT NUMBER: 12602	DRAWING NUMBER: AR.AH3.97.0006	6
SCALE: NTS @ A3		

FOR DA APPROVAL



1 ACUTE HOSPITAL PORTION B - SOUTH WEST AERIAL VIEW

THIS DOCUMENT IS THE COPYRIGHT OF BILLARD LEECE PARTNERSHIP PTY LTD.
ALL INFORMATION CONTAINED IN THIS DOCUMENT IS TRUE, CORRECT AND VERIFIED ON SITE.
IN THE EVENT OF DISCREPANCIES BETWEEN THIS DOCUMENT AND THE PROJECT TO COMMENCEMENT OF THE WORK,
DO NOT SCALE DRAWINGS MANUALLY OR ELECTRONICALLY.

KEY PLAN			
REV	DESCRIPTION OF CHANGE	DRAWN	CHECK
1	100% SD Report Issue		30/11/12
2	DA SUBMISSION		30/11/2012
3	DA SUBMISSION		01/02/2013
4	DA SUBMISSION		12/02/2013
5	General Revisions		27/02/2013
6	DA SUBMISSION		08/03/2013

STEENSENVARMING



QUANTITY SURVEYOR
Davis Langdon
An AECOM Company
L5 100 PACIFIC HIGHWAY P: 02 9956 8822
NORTH SYDNEY W: www.davislangdon.com/ANZ/
NSW 2060

CLIENT
 Health Infrastructure
77 PACIFIC HIGHWAY P: 02 9578 5402
NORTH SYDNEY F: 02 8904 1377
NSW 2060 W: www.hinfra.health.nsw.gov.au

ARCHITECTS
 Billard Leece Partnership Pty Ltd
Architects & Urban Planners
Studio 307, 50 Holt St
Sunny Hills 2010
NSW Australia
T +61 2 8096 4066
E info@blp.com.au
www.blp.com.au

PROJECT:
WAGGA WAGGA HEALTH SERVICES
REDEVELOPMENT
EDWARD STREET
WAGGA WAGGA, NSW, 2650

DRAWING TITLE:
ACUTE HOSPITAL PORTION B - SW
AERIAL VIEW

Drawn: Author	Designed: Designer	Reviewed: Project Manager
Checked: Checker	Design Review: Approved: Project Director	Issue:
PROJECT NUMBER: 12602	DRAWING NUMBER: AR.AH3.97.0007	6
SCALE: NTS @ A3		

FOR DA APPROVAL



1 ACUTE HOSPITAL PORTION B - NORTH WEST AERIAL VIEW

THIS DOCUMENT IS THE COPYRIGHT OF BILLARD LEECE PARTNERSHIP PTY LTD.
ALL INFORMATION CONTAINED IN THIS DOCUMENT IS TRUE, CORRECT AND VERIFIED ON SITE.
IN THE EVENT OF DISCREPANCIES HEREIN TO THE PROJECT PRIOR TO COMMENCEMENT OF THE WORK,
DO NOT SCALE DRAWINGS MANUALLY OR ELECTRONICALLY.

KEY PLAN

REV	DESCRIPTION OF CHANGE	DRAWN	CHECK	DATE
1	100% SD Report Issue			30/11/12
2	DA SUBMISSION			30/11/2012
3	DA SUBMISSION			01/02/2013
4	DA SUBMISSION			12/02/2013
5	General Revisions			27/02/2013
6	DA SUBMISSION			08/03/2013

STEENSENVARMING

QUANTITY SURVEYOR

Davis Langdon
An AECOM Company
L5 100 PACIFIC HIGHWAY P: 02 9956 8822
NORTH SYDNEY W: www.davislangdon.com/ANZ/
NSW 2060

CLIENT

77 PACIFIC HIGHWAY P: 02 9578 5402
NORTH SYDNEY F: 02 8504 1377
NSW 2060 W: www.hinfra.health.nsw.gov.au

ARCHITECTS

Billard Leece Partnership Pty Ltd
Architects & Urban Planners
Studio 307, 50 Holt St
Sunny Hills 2010
NSW Australia
T +61 2 8096 4066
E info@blp.com.au
www.blp.com.au

PROJECT:
WAGGA WAGGA HEALTH SERVICES
REDEVELOPMENT
EDWARD STREET
WAGGA WAGGA, NSW, 2650

DRAWING TITLE:
ACUTE HOSPITAL PORTION B - NW
AERIAL VIEW

Drawn: Author	Designed: Designer	Reviewed: Project Manager
Checked: Checker	Design Review: Approved Project Director	
PROJECT NUMBER: 12602	DRAWING NUMBER: AR.AH3.97.0008	ISSUE: 6
SCALE: NTS @ A3		

FOR DA APPROVAL



1 EXISTING VIEW LOOKING WEST ALONG YABTREE STREET FROM MURRAY STREET



2 PROPOSED VIEW LOOKING WEST ALONG YABTREE STREET FROM MURRAY STREET

THIS DOCUMENT IS THE COPYRIGHT OF BILLARD LEECE PARTNERSHIP PTY LTD.
ALL INFORMATION CONTAINED IN THIS DOCUMENT IS TRUE, CORRECT AND VERIFIED ON SITE.
IN THE EVENT OF DISCREPANCIES BETWEEN THIS DOCUMENT AND THE PROJECT, THIS DOCUMENT SHALL PREVAIL.
DO NOT SCALE DRAWINGS MANUALLY OR ELECTRONICALLY.

KEY PLAN				
REV	DESCRIPTION OF CHANGE	DRAWN	CHECK	DATE
1	100% SD Report Issue			30/11/12
2	DA SUBMISSION			30/11/2012
3	DA SUBMISSION			01/02/2013
4	DA SUBMISSION			12/02/2013
5	DA SUBMISSION			08/03/2013

STEENSENVARMING



QUANTITY SURVEYOR
Davis Langdon
An AECOM Company
L5 100 PACIFIC HIGHWAY P: 02 9956 8822
NORTH SYDNEY W: www.davislangdon.com/ANZ/
NSW 2060

CLIENT
NSW Health Infrastructure
77 PACIFIC HIGHWAY P: 02 9578 5402
NORTH SYDNEY F: 02 8904 1377
NSW 2060 W: www.hinfra.health.nsw.gov.au

ARCHITECTS
BLP Billard Leece Partnership Pty Ltd
Architects & Urban Planners
Studio 307, 50 Holt St
Surry Hills 2010
NSW Australia
T +61 2 8096 4066
E info@blp.com.au
www.blp.com.au

PROJECT:
WAGGA WAGGA HEALTH SERVICES
REDEVELOPMENT
EDWARD STREET
WAGGA WAGGA, NSW, 2650

DRAWING TITLE:
ACUTE HOSPITAL PORTION B - VIEW
ANALYSIS - PHOTOMONTAGED
STREET VIEW 01

Drawn: Author	Designed: Designer	Reviewed: Project Manager
Checked: Checker	Design Review: Approved: Project Director	
PROJECT NUMBER: 12602	DRAWING NUMBER: AR.AH3.97.0011	ISSUE: 5
SCALE: NTS@B1		

FOR DA APPROVAL



1 EXISTING VIEW LOOKING EAST FROM DOCKER STREET



2 PROPOSED VIEW LOOKING EAST FROM DOCKER STREET

THIS DOCUMENT IS THE COPYRIGHT OF BILLARD LEECE PARTNERSHIP PTY LTD.
ALL INFORMATION CONTAINED IN THIS DOCUMENT IS TRUE, CORRECT AND VERIFIED ON SITE.
IN THE EVENT OF DISCREPANCIES BETWEEN THE PROJECT AND THE DRAWING, THE PROJECT SHALL PREVAIL.
DO NOT SCALE DRAWINGS MANUALLY OR ELECTRONICALLY.

KEY PLAN

REV	DESCRIPTION OF CHANGE	DRAWN	CHECK	DATE
1	100% SD Report Issue			30/11/12
2	DA SUBMISSION			30/11/2012
3	DA SUBMISSION			01/02/2013
4	DA SUBMISSION			12/02/2013
5	DA SUBMISSION			08/03/2013

STEENSENVARMING



QUANTITY SURVEYOR
Davis Langdon
An AECOM Company
L5 100 PACIFIC HIGHWAY P: 02 9956 8822
NORTH SYDNEY F: 02 8904 1377
NSW 2060 W: www.davislangdon.com/ANZ/

CLIENT

77 PACIFIC HIGHWAY P: 02 9578 5402
NORTH SYDNEY F: 02 8904 1377
NSW 2060 W: www.hinfra.health.nsw.gov.au

ARCHITECTS

Billard Leece Partnership Pty Ltd
Architects & Urban Planners
Studio 307, 50 Holt St
Sunny Hills 2010
NSW Australia
T +61 2 8096 4066
E info@blp.com.au
www.blp.com.au

PROJECT:
WAGGA WAGGA HEALTH SERVICES
REDEVELOPMENT
EDWARD STREET
WAGGA WAGGA, NSW, 2650

DRAWING TITLE:
ACUTE HOSPITAL PORTION B - VIEW
ANALYSIS - PHOTOMONTAGED
STREET VIEW 02

Drawn: Author	Designed: Designer	Reviewed: Project Manager
Drafting: Checker	Design: Reviewer	Approved: Project Director
PROJECT NUMBER: 12602	DRAWING NUMBER: AR.AH3.97.0012	ISSUE: 5
SCALE: NTS@B1		

FOR DA APPROVAL



① EXISTING VIEW LOOKING NORTH EAST FROM DOCKER STREET



② PROPOSED VIEW LOOKING NORTH EAST FROM DOCKER STREET

THIS DOCUMENT IS THE COPYRIGHT OF BILLARD LEECE PARTNERSHIP PTY LTD.
ALL INFORMATION CONTAINED IN THIS DOCUMENT IS TRUE, CORRECT AND VERIFIED ON SITE.
IN THE EVENT OF DISCREPANCIES BETWEEN THIS DOCUMENT AND THE PROJECT, THE PROJECT SHALL PREVAIL.
DO NOT SCALE DRAWINGS MANUALLY OR ELECTRONICALLY.

KEY PLAN

REV	DESCRIPTION OF CHANGE	DRAWN	CHECK	DATE
1	100% SD Report Issue			30/11/12
2	DA SUBMISSION			30/11/2012
3	DA SUBMISSION			01/02/2013
4	DA SUBMISSION			12/02/2013
5	DA SUBMISSION			08/03/2013

STEENSENVARMING



QUANTITY SURVEYOR
Davis Langdon
An AECOM Company
L5 100 PACIFIC HIGHWAY P: 02 9956 8822
NORTH SYDNEY W: www.davislangdon.com/ANZ/
NSW 2060

CLIENT
NSW GOVERNMENT **Health Infrastructure**
77 PACIFIC HIGHWAY P: 02 9978 5402
NORTH SYDNEY F: 02 8904 1377
NSW 2060 W: www.hinfra.health.nsw.gov.au

ARCHITECTS
BLP Billard Leece Partnership Pty Ltd
Architects & Urban Planners
Studio 307, 50 Holt St
Sunny Hills 2010
NSW Australia
T +61 2 8096 4066
E info@blp.com.au
www.blp.com.au

PROJECT:
WAGGA WAGGA HEALTH SERVICES
REDEVELOPMENT
EDWARD STREET
WAGGA WAGGA, NSW, 2650

DRAWING TITLE:
ACUTE HOSPITAL PORTION B - VIEW
ANALYSIS - PHOTOMONTAGED
STREET VIEW 03

Drawn: Author	Designed: Designer	Reviewed: Project Manager
Drawing Checker: Checker	Design Reviewer: Project Director	Approved: Project Director
PROJECT NUMBER: 12602	DRAWING NUMBER: AR.AH3.97.0013	ISSUE: 5
SCALE: NTS@B1		

FOR DA APPROVAL



① EXISTING VIEW LOOKING SOUTH ALONG LEWIS DRIVE FROM EDWARD STREET



② PROPOSED VIEW LOOKING SOUTH ALONG LEWIS DRIVE FROM EDWARD STREET

THIS DOCUMENT IS THE COPYRIGHT OF BILLARD LEECE PARTNERSHIP PTY LTD.
ALL INFORMATION CONTAINED IN THIS DOCUMENT IS TRUE, CORRECT AND VERIFIED ON SITE.
IN THE EVENT OF DISCREPANCIES BETWEEN THE DRAWING AND THE VERIFICATION ON SITE,
THE DRAWING SHALL PREVAIL.
DO NOT SCALE DRAWINGS MANUALLY OR ELECTRONICALLY.

KEY PLAN				
REV	DESCRIPTION OF CHANGE	DRAWN	CHECK	DATE
1	100% SD Report Issue			30/11/12
2	DA SUBMISSION			30/11/2012
3	DA SUBMISSION			01/02/2013
4	DA SUBMISSION			12/02/2013
5	DA SUBMISSION			08/03/2013

STEENSENVARMING



QUANTITY SURVEYOR
Davis Langdon
An AECOM Company
L5 100 PACIFIC HIGHWAY P: 02 9956 8822
NORTH SYDNEY W: www.davislangdon.com/ANZ/
NSW 2060

CLIENT
NSW Health Infrastructure
77 PACIFIC HIGHWAY P: 02 9578 5402
NORTH SYDNEY F: 02 8904 1377
NSW 2060 W: www.hinfra.health.nsw.gov.au

ARCHITECTS
BLP Billard Leece Partnership Pty Ltd
Architects & Urban Planners
Studio 307, 50 Holt St
Sunny Hills 2010
NSW Australia
T +61 2 8096 4066
E info@blp.com.au
www.blp.com.au

PROJECT:
WAGGA WAGGA HEALTH SERVICES
REDEVELOPMENT
EDWARD STREET
WAGGA WAGGA, NSW, 2650

DRAWING TITLE:
ACUTE HOSPITAL PORTION B - VIEW
ANALYSIS - PHOTOMONTAGED
STREET VIEW 04

Drawn: Author	Designed: Designer	Reviewed: Project Manager:
Checked: Checker	Design Reviewer:	Approved: Project Director:
PROJECT NUMBER: 12602	DRAWING NUMBER: AR.AH3.97.0014	ISSUE: 5
SCALE: NTS@B1		

FOR DA APPROVAL