

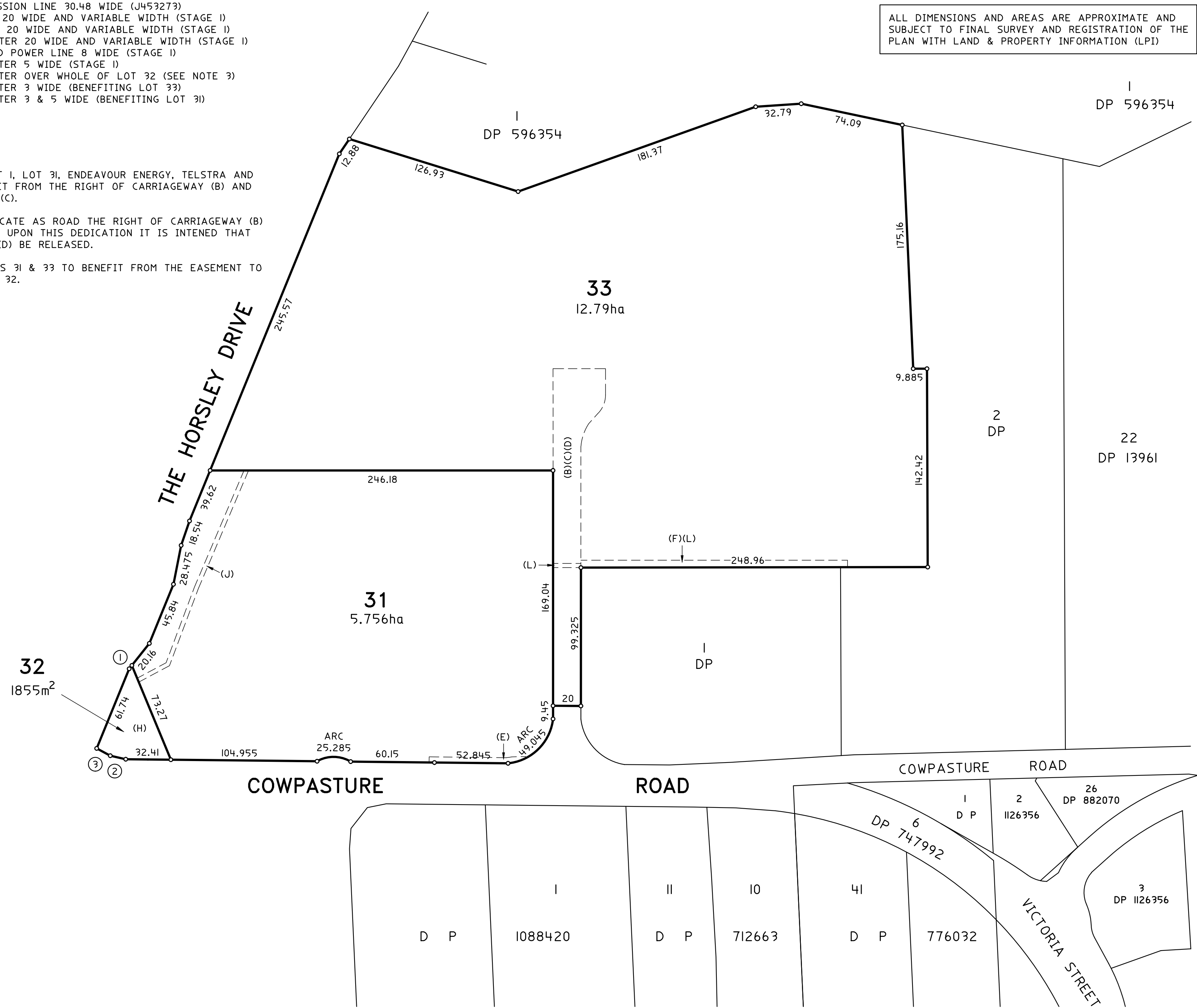
- (A) EASEMENT FOR TRANSMISSION LINE 30.48 WIDE (J453273)  
(B) RIGHT OF CARRIAGEWAY 20 WIDE AND VARIABLE WIDTH (STAGE 1)  
(C) EASEMENT FOR SERVICES 20 WIDE AND VARIABLE WIDTH (STAGE 1)  
(D) EASEMENT TO DRAIN WATER 20 WIDE AND VARIABLE WIDTH (STAGE 1)  
(E) EASEMENT FOR OVERHEAD POWER LINE 8 WIDE (STAGE 1)  
(F) EASEMENT TO DRAIN WATER 5 WIDE (STAGE 1)  
(H) EASEMENT TO DRAIN WATER OVER WHOLE OF LOT 32 (SEE NOTE 3)  
(J) EASEMENT TO DRAIN WATER 3 WIDE (BENEFITING LOT 33)  
(L) EASEMENT TO DRAIN WATER 3 & 5 WIDE (BENEFITING LOT 31)

(R) ROAD WIDENING

NOTES:

1. IT IS INTENEDED FOR LOT 1, LOT 31, ENDEAVOUR ENERGY, TELSTRA AND SYDNEY WATER TO BENEFIT FROM THE RIGHT OF CARRIAGEWAY (B) AND EASEMENT FOR SERVICES (C).
2. IT IS INTENDED TO DEDICATE AS ROAD THE RIGHT OF CARRIAGEWAY (B) TO COUNCIL AT STAGE 4. UPON THIS DEDICATION IT IS INTENED THAT EASEMENTS (B), (C) AND (D) BE RELEASED.
3. IT IS INTENDED FOR LOTS 31 & 33 TO BENEFIT FROM THE EASEMENT TO DRAIN WATER OVER LOT 32.

SCHEDULE OF SHORT LINES & ARCS		
No.	LINE	ARC
1	3.1	
2	11.23	
3	11.25	



Surveyor: SHAWN MAURICE LECLERC Date of Survey: 7-2015 Surveyor's Ref: 10067-007-(C)	PLAN OF SUBDIVISION OF LOT 3 IN DP 596354	L.G.A.: FAIRFIELD Locality: WETHERILL PARK Subdivision No: Lengths are in metres. Reduction Ratio 1: 2000	Registered	DRAFT - STAGE 2
--	---	--	------------	-----------------