

EXTENT OF DASHED LINE DENOTES EXTENT OF UNIVERSITY OF SYDNEY CAMPERDOWN CAMPUS

NSW GOVERNMENT  
Planning

Issued under the Environmental Planning and Assessment Act 1979

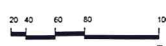
Approved Application No. 550 5087-2011

granted on the 15 OCTOBER 2013

Signed: [Signature]

Sheet No. 1 of 21

1 Key Plan  
Scale: 1 : 2000



LEGEND	
	EXISTING BUILDINGS
	APPROXIMATE EXTENT OF SITE
	WILKINSON AXIS
	SITE BOUNDARY
	EXISTING TREES AND VEGETATION

©architectus Sydney 2011

Architectus Sydney Pty Ltd is the owner of the copyright subsisting in these drawings, plans, designs and specifications. They must not be used, reproduced or copied, in whole or in part, nor may the information, ideas and concepts therein contained (which are confidential to Architectus Sydney Pty Ltd) be disclosed to any person without the prior written consent of that company.

Do not scale drawings.  
Verify all dimensions on site

issue	amendment	date
1	DEVELOPMENT APPLICATION	19.06.2013
2	DEVELOPMENT APPLICATION	25.06.2013

issue	amendment	date



Warren Smith & Partners Pty Ltd

Level 1  
123 Clarence Street  
Sydney NSW 2000  
T (61 2) 9299 1312

M+W GROUP

Levels 11-21  
51 Underwood Road  
Homebush NSW 2140  
T (61 2) 9878 4038

Norman  
Disney &  
Young  
Level 1  
60 Miller Street  
North Sydney NSW 2000  
T (61 2) 9326 6800

Lend Lease  
Level 4 The Bond  
30 Hickson Road  
Milers Point NSW 2000  
T (61 2) 9326 6111

AECOM

Level 21  
420 George Street  
Sydney NSW 2000  
T (61 2) 9334 0000

architectus™

Architectus Sydney  
Level 3 341 George Street  
Sydney NSW 2000  
T (61 2) 8252 8400  
F (61 2) 8252 8600  
sydney@architectus.com.au

ABN 11 096 489 448

checked	RO	scale	As indicated@A1
drawn	AB	project no	120240

project  
Australian Institute of Nanoscience

Development Application

drawing  
Site Plan - Key Plan

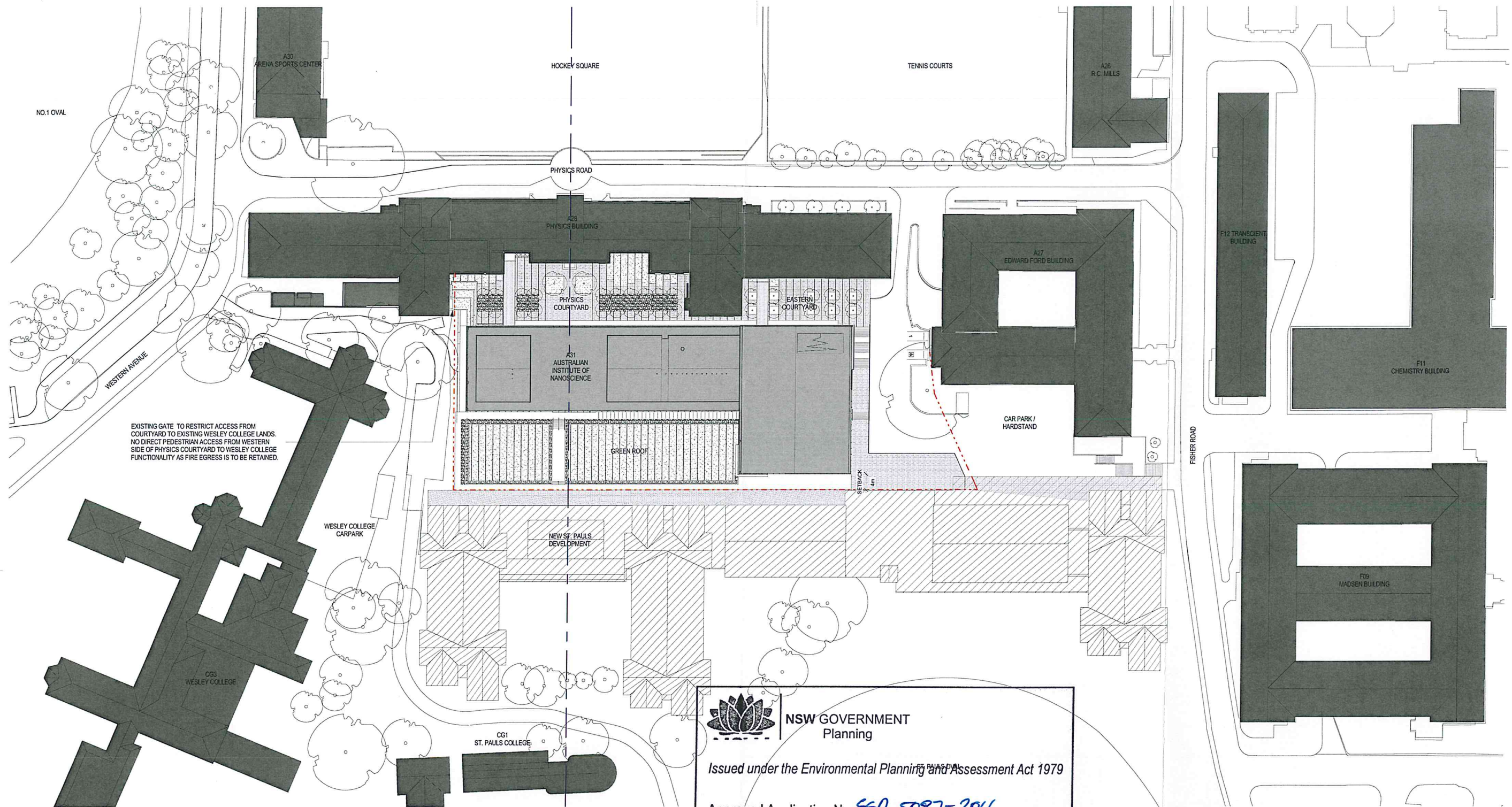
drawing no.  
DA-0010

25/06/2013 6:58:01 PM









1 Site Plan - Proposed  
Scale: 1:500  
5 10 15 20 25

**NSW GOVERNMENT**  
Planning

Issued under the Environmental Planning and Assessment Act 1979

Approved Application No. S50 5087-2011

granted on the 15 October 2013

Signed [Signature]

Sheet No. 3 of 21

**LEGEND**

EXISTING BUILDINGS. PROPOSED BUILDINGS.

SITE BOUNDARY WILKINSON AXIS

\*architectus Sydney 2011

Architectus Sydney Pty Ltd is the owner of the copyright subsisting in these drawings, plans, designs and specifications. They must not be used, reproduced or copied, in whole or in part, nor may the information, ideas and concepts therein be disclosed to any person without the prior written consent of that company.

issue	amendment	date
1	DEVELOPMENT APPLICATION	19.06.2013
2	DEVELOPMENT APPLICATION	22.07.2013

issue	amendment	date

**Warren Smith & Partners Pty Ltd**

Level 1  
123 Clarence Street  
Sydney NSW 2000  
T (61 2) 9299 1312

**M+W GROUP**

Level 11-21  
51 Underwood Road  
Homebush NSW 2140  
T (61 2) 9878 4038

**Lend Lease**

Level 4, The Bond  
30 Hickson Road  
Mills Point NSW 2000  
T (61 2) 9236 6111

**AECOM**

Level 21  
420 George Street  
Sydney NSW 2000  
T (61 2) 8534 0000

**architectus™**

project **Australian Institute of Nanoscience**

drawing **Site Plan - Proposed Context**

drawing no. **DA-0012**

issue **2**

22/07/2013 4:45:52 PM

Do not scale drawings.  
Verify all dimensions on site









1 AIN - Level 2 - General Arrangement  
Scale: 1:250

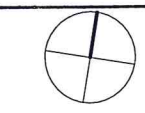
architectus Sydney 2011  
Architectus Sydney Pty Ltd is the owner of the copyright subsisting in these drawings, plans, designs and specifications. They must not be used, reproduced or copied, in whole or in part, nor may the information, ideas and concepts therein contained (which are confidential to Architectus Sydney Pty Ltd) be disclosed to any person without the prior written consent of that company.

Do not scale drawings.  
Verify all dimensions on site

Issue	amendment	date
1	DEVELOPMENT APPLICATION	19.06.2013

Issue	amendment	date

NSW GOVERNMENT  
Planning  
Issued under the Environmental Planning and Assessment Act 1979  
OUTLINE OF  
FUTURE ST PAULS DEVELOPMENT  
Approved Application No. 55-D-3087-2001  
granted on the 15 October 2013  
Signed *[Signature]*  
Sheet No. 5 of 21



Warren Smith & Partners Pty Ltd  
Level 1  
123 Clarence Street  
Sydney NSW 2000  
T (61 2) 9299 1312

M+W GROUP  
Levels 11-21  
51 Underwood Road  
Sydney NSW 2140  
T (61 2) 9878 4038

Norman Disney & Young  
Level 1  
60 Miller Street  
North Sydney NSW 2060  
T (61 2) 9228 8900

Lend Lease  
Level 4 The Bond  
30 Hickson Road  
Millers Point NSW 2000  
T (61 2) 9236 6111

AECOM  
Level 21  
420 George Street  
Sydney NSW 2000  
T (61 2) 8934 0000

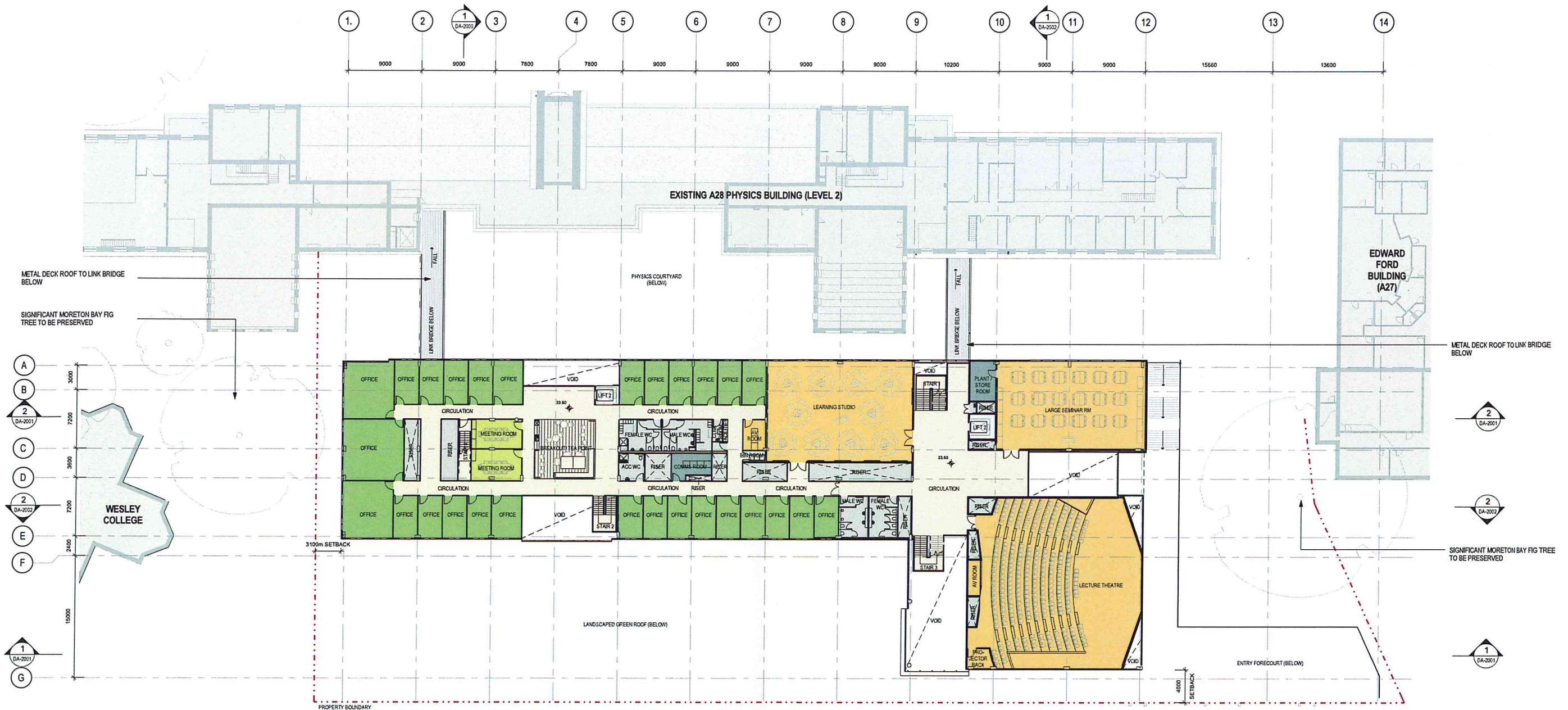
Sydney  
Melbourne  
Auckland  
Brisbane  
Shanghai

architectus™  
Architectus Sydney  
Level 3 341 George Street  
Sydney NSW 2000  
T (61 2) 8252 8400  
F (61 2) 8252 8800  
sydney@architectus.com.au  
ABN 11 098 489 448

checked RO scale 1:250@A1  
drawn CV project no 120240

project Australian Institute of Nanoscience  
Development Application  
drawing Floor Plan - AIN Level 2  
drawing no. DA-1001 issue 1  
19/06/2013 1:50:25 PM





1 AIN - Level 3 - General Arrangement  
Scale: 1:250



©architectus Sydney 2011  
Architectus Sydney Pty Ltd is the owner of the copyright subsisting in these drawings, plans, designs and specifications. They must not be used, reproduced or copied, in whole or in part, nor may the information, ideas and concepts therein be disclosed to any person without the prior written consent of that company.

Do not scale drawings.  
Verify all dimensions on site

**NSW GOVERNMENT Planning**

Issued under the *Environmental Planning and Assessment Act 1979*

Approved Application No. 650 5087-2011

granted on the 15 OCTOBER 2013

Signed [Signature]

Sheet No. 6 of 21

issue	amendment	date	issue	amendment	date
1	DEVELOPMENT APPLICATION	15.06.2013			

**Warren Smith & Partners Pty Ltd**  
Level 1  
123 Clarence Street  
Sydney NSW 2000  
T (61 2) 9299 1312

**Norman Disney & Young**  
Level 1  
60 Miller Street  
North Sydney NSW 2060  
T (61 2) 9236 6800

**M+W GROUP**  
Levels 11-21  
51 Underwood Road  
Homebush NSW 2140  
T (61 2) 9978 4038

**Lend Lease**  
Level 4 The Bond  
30 Hickson Road  
Millers Point NSW 2000  
T (61 2) 9236 6111

**AECOM**  
Level 21  
420 George Street  
Sydney NSW 2000  
T (61 2) 8934 0000

**architectus™**  
Architectus Sydney  
Level 3 341 George Street  
Sydney NSW 2000  
T (61 2) 8252 8400  
F (61 2) 8252 8500  
sydney@architectus.com.au  
ABN 11 098 489 448

Sydney  
Melbourne  
Auckland  
Brisbane  
Shanghai

checked RO scale 1:250@A1  
drawn IJP project no 120240

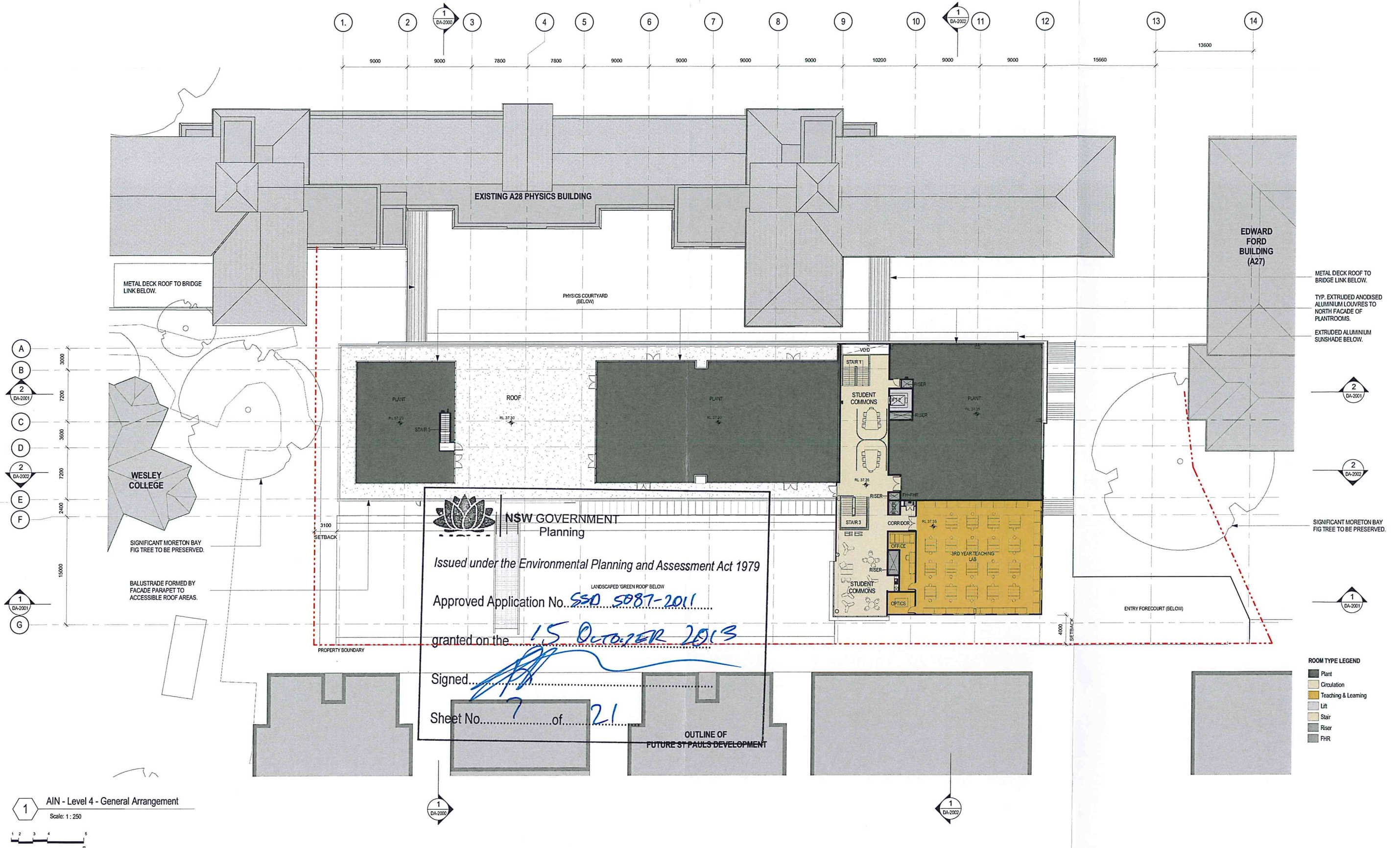
project Australian Institute of Nanoscience  
Development Application

drawing Floor Plan - AIN Level 3

drawing no. DA-1002 issue 1

19/06/2013 1:53:04 PM





NSW GOVERNMENT  
Planning

Issued under the Environmental Planning and Assessment Act 1979

Approved Application No. SSD 5087-2011

granted on the 15 October 2013

Signed [Signature]

Sheet No. 7 of 21

OUTLINE OF  
FUTURE ST PAULS DEVELOPMENT

1 AIN - Level 4 - General Arrangement  
Scale: 1 : 250

©architectus Sydney 2011

Architectus Sydney Pty Ltd is the owner of the copyright subsisting in these drawings, plans, designs and specifications. They must not be used, reproduced or copied, in whole or in part, nor may the information, ideas and concepts therein be disclosed to any person without the prior written consent of that company.

Do not scale drawings.  
Verify all dimensions on site

issue	amendment	date
1	DEVELOPMENT APPLICATION	19.06.2013
2	DEVELOPMENT APPLICATION	25.06.2013

issue	amendment	date

Warren Smith & Partners Pty Ltd

Level 1  
123 Clarence Street  
Sydney NSW 2000  
T (61 2) 9299 1312

M+W GROUP

Levels 11-21  
51 Underwood Road  
Homebush NSW 2140  
T (61 2) 9878 4038

Norman Disney & Young

Level 1  
60 Miller Street  
North Sydney NSW 2060  
T (61 2) 9928 6800

Lend Lease

Level 4 The Bond  
30 Hickson Road  
Mills Point NSW 2000  
T (61 2) 9236 6111

AECOM

Level 21  
420 George Street  
Sydney NSW 2000  
T (61 2) 8934 0000

Sydney  
Melbourne  
Auckland  
Brisbane  
Shanghai

checked RO scale 1 : 250@A1  
drawn CV project no 120240

architectus™

Architectus Sydney  
Level 3 341 George Street  
Sydney NSW 2000  
T (61 2) 8252 8400  
F (61 2) 8252 8500  
sydney@architectus.com.au

ABN 11 098 489 448

project Australian Institute of Nanoscience  
Development Application

drawing Floor Plan - AIN Level 4

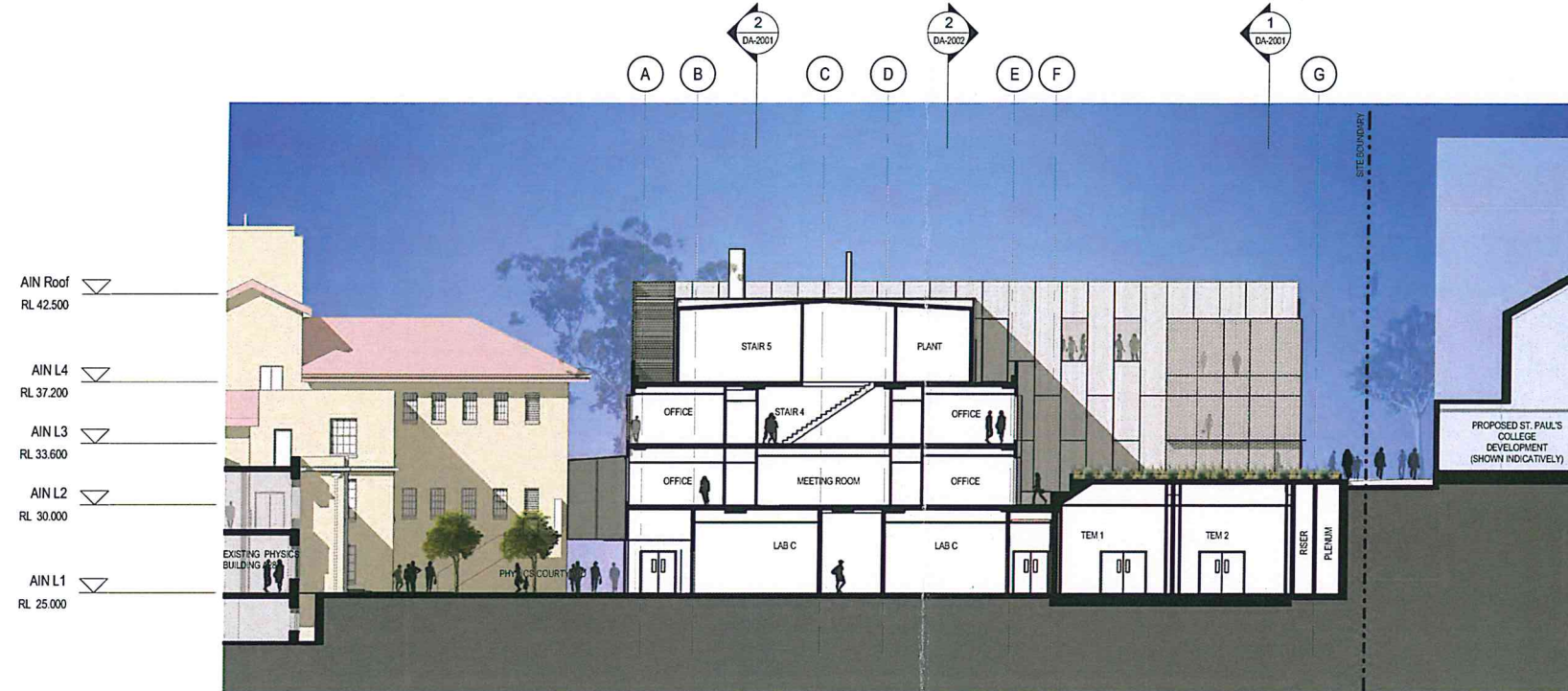
drawing no. DA-1003 issue 2

25/06/2013 5:57:11 PM










1 North-South Section 1  
Scale: 1 : 200

 **NSW GOVERNMENT**  
Planning

Issued under the Environmental Planning and Assessment Act 1979

Approved Application No. SSD 5087-2011

granted on the 15 OCTOBER 2013

Signed [Signature]

Sheet No. 9 of 21



"architectus" Sydney 2011

Architectus Sydney Pty Ltd is the owner of the copyright subsisting in these drawings, plans, designs and specifications. They must not be used, reproduced or copied, in whole or in part, nor may the information, ideas and concepts therein be disclosed to any person without the prior written consent of that company.

Do not scale drawings.  
Verify all dimensions on site

issue	amendment	date
1	DEVELOPMENT APPLICATION	19.06.2013

issue	amendment	date

Warren Smith & Partners Pty Ltd

Level 1  
123 Clarence Street  
Sydney NSW 2000  
T (61 2) 9299 1312

 **M+W GROUP**

 **Norman Disney & Young**  
Level 1  
60 Miller Street  
North Sydney NSW 2060  
T (61 2) 9928 6800

Levels 11-21  
51 Underwood Street  
Homebush NSW 2140  
T (61 2) 9878 4038

 **Lend Lease**  
Level 4, The Bond  
30 Hickson Road  
Mills Point NSW 2000  
T (61 2) 9236 6111

**AECOM**  
Level 21  
420 George Street  
Sydney NSW 2000  
T (61 2) 8934 0000

**architectus™**

Architectus Sydney  
Level 3 341 George Street  
Sydney NSW 2000  
T (61 2) 8252 8400  
F (61 2) 8252 8500  
sydney@architectus.com.au  
ABN 11 098 459 448

Sydney  
Melbourne  
Auckland  
Brisbane  
Shanghai

checked RO scale 1 : 200@A1  
drawn MM / IP project no 120240

project Australian Institute of Nanoscience  
Development Application

drawing Sections - Sheet 1

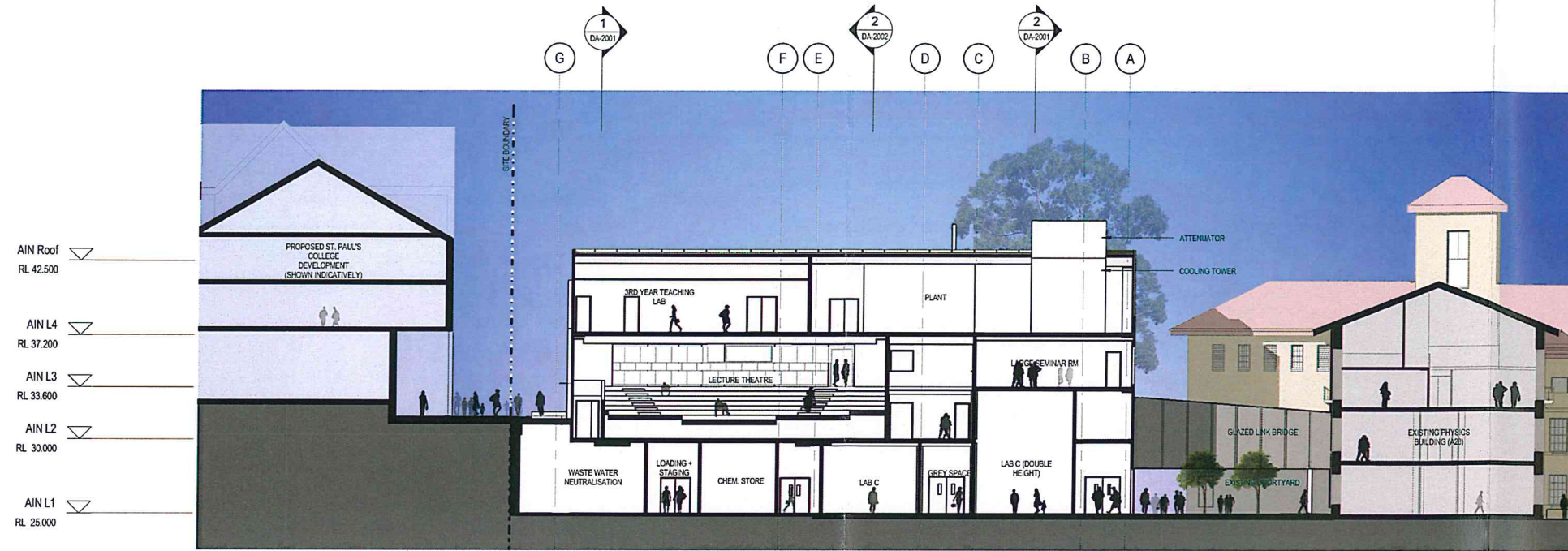
drawn no. issue  
DA-2000 1

19/06/2013 1:13:29 PM

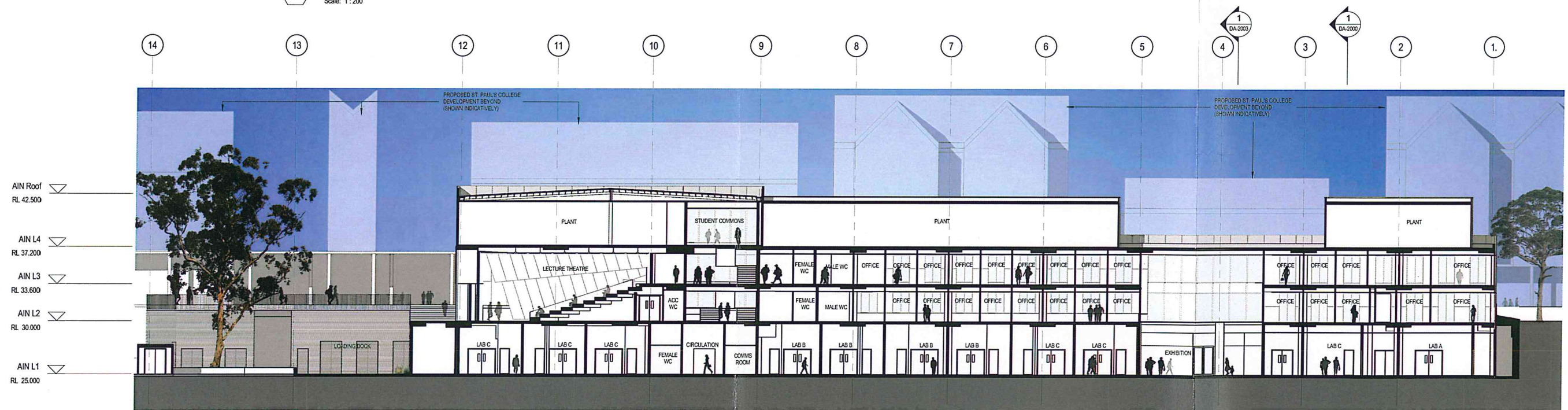








1 North-South Section 3  
Scale: 1:200



**NSW GOVERNMENT Planning**  
East-West Section 3  
Scale: 1:200  
Issued under the Environmental Planning and Assessment Act 1979

Approved Application No. SSO 5087-2011

granted on the 15 OCTOBER 2013

Signed [Signature]

Sheet No. 11 of 21

Warren Smith & Partners Pty Ltd  
Level 1  
123 Clarence Street  
Sydney NSW 2000  
T (61 2) 9299 1312

Issue	Amendment	Date	Issue	Amendment	Date
1	DEVELOPMENT APPLICATION				
2	DEVELOPMENT APPLICATION	22/07/2013			

**Norman Disney & Young**  
Level 1  
60 Miller Street  
North Sydney NSW 2060  
T (61 2) 9528 6800

**Lend Lease**  
Level 4 The Bond  
30 Hickson Road  
Mills Point NSW 2000  
T (61 2) 9236 6111

**AECOM**  
Level 21  
420 George Street  
Sydney NSW 2000  
T (61 2) 8934 0000

**architectus**  
Architectus Sydney  
Level 3 341 George Street  
Sydney NSW 2000  
T (61 2) 8252 8400  
F (61 2) 8252 8600  
sydney@architectus.com.au  
ABN 11 098 469 448

checked RO scale 1:200@A1  
drawn IIP project no 120240

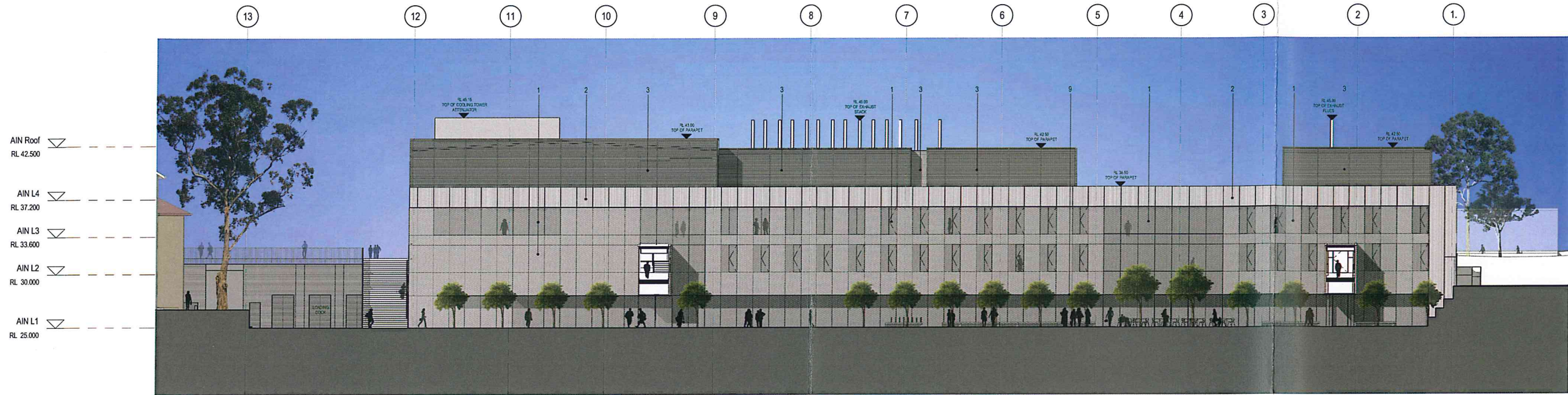
project Australian Institute of Nanoscience  
Development Application  
drawing Sections - Sheet 3  
drawing no. DA-2002  
issue 2  
22/07/2013 5:45:22 PM

architectus Sydney 2011

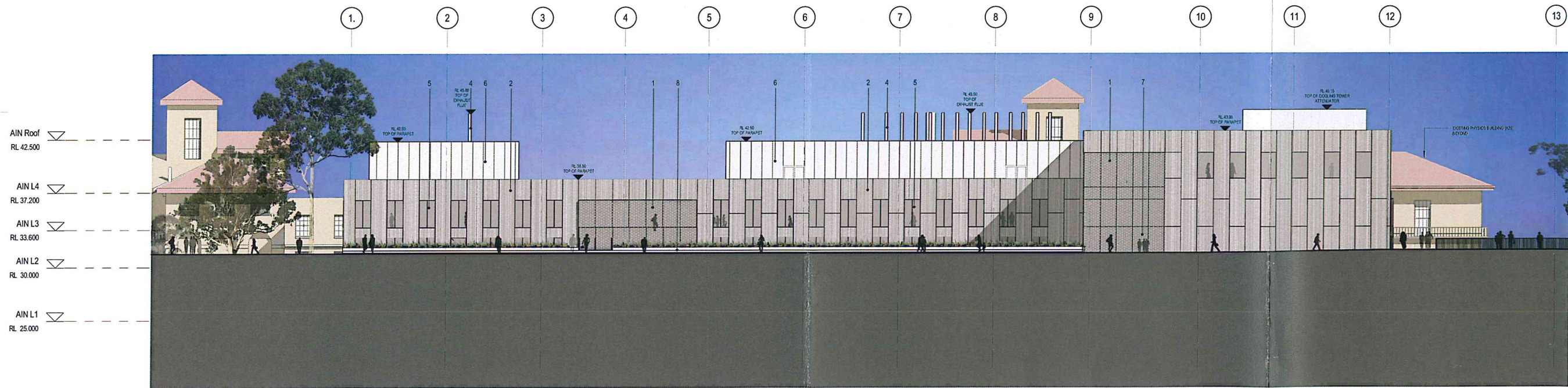
Architectus Sydney Pty Ltd is the owner of the copyright subsisting in these drawings, plans, designs and specifications. They must not be used, reproduced or copied, in whole or in part, nor may the information, ideas and concepts therein, contained (which are confidential to Architectus Sydney Pty Ltd) be disclosed to any person without the prior written consent of that company.

Do not scale drawings.  
Verify all dimensions on site





1 North Elevation  
Scale: 1:200



2 South Elevation  
Scale: 1:200



©architectus Sydney 2011  
Architectus Sydney Pty Ltd is the owner of the copyright subsisting in these drawings, plans, designs and specifications. They must not be used, reproduced or copied, in whole or in part, nor may the information, ideas and concepts therein contained (which are confidential to Architectus Sydney Pty Ltd) be disclosed to any person without the prior written consent of that company.

Do not scale drawings.  
Verify all dimensions on site

**NSW GOVERNMENT Planning**

Issued under the Environmental Planning and Assessment Act 1979

Approved Application No. SSD 5087-2011

granted on the 15 October 2013

Signed [Signature]

Sheet No. 12 of 21

Warren Smith & Partners Pty Ltd  
Level 1  
123 Clarence Street  
Sydney NSW 2000  
T (61 2) 9299 1312

Issue	amendment	date	Issue	amendment	date
1	DEVELOPMENT APPLICATION	25.06.2013			
2	DEVELOPMENT APPLICATION	22.07.2013			
3	DEVELOPMENT APPLICATION				

**Norman Disney & Young**  
Level 1  
60 Miller Street  
North Sydney NSW 2060  
T (61 2) 9528 6800

**Lend Lease**  
Level 4 The Bond  
30 Hickson Road  
Mills Point NSW 2000  
T (61 2) 9236 6111

**M+W GROUP**  
Levels 11-21  
51 Underwood Road  
Homebush NSW 2140  
T (61 2) 9878 4038

**AECOM**  
Level 21  
420 George Street  
Sydney NSW 2000  
T (61 2) 8934 0000

- LEGEND**
1. FLUSH GLAZED CURTAIN-WALLING SYSTEM WITH FRIT PATTERN
  2. ALUMINIUM FACED COMPOSITE CLADDING PANEL - NATURAL BRUSHED ALUMINIUM FINISH
  3. EXTRUDED ALUMINIUM LOUVRES WITH NATURAL ANODISED FINISH
  4. STAINLESS STEEL EXHAUST STACK FLUE SHROUD
  5. FLUSH GLAZED ALUMINIUM FRAMED WINDOW SYSTEM
  6. STEEL FACED COMPOSITE CLADDING PANEL WITH SILVER POLYESTER POWDER COATED FINISH
  7. FLUSH GLAZED CURTAIN WALLING SYSTEM - CLEAR GLASS NO FRIT
  8. IN-SITU CONCRETE - CLEAR FINISH
  9. EXTRUDED ALUMINIUM SUNSHADING - NATURAL ANODISED FINISH

**architectus™**  
project  
Australian Institute of Nanoscience  
Development Application

drawing  
Elevations - Sheet 1

checked RO scale 1:200@A1  
drawn AB project no 120240

drawing no. DA-3000 issue 3

22/07/2013 6:13:12 PM



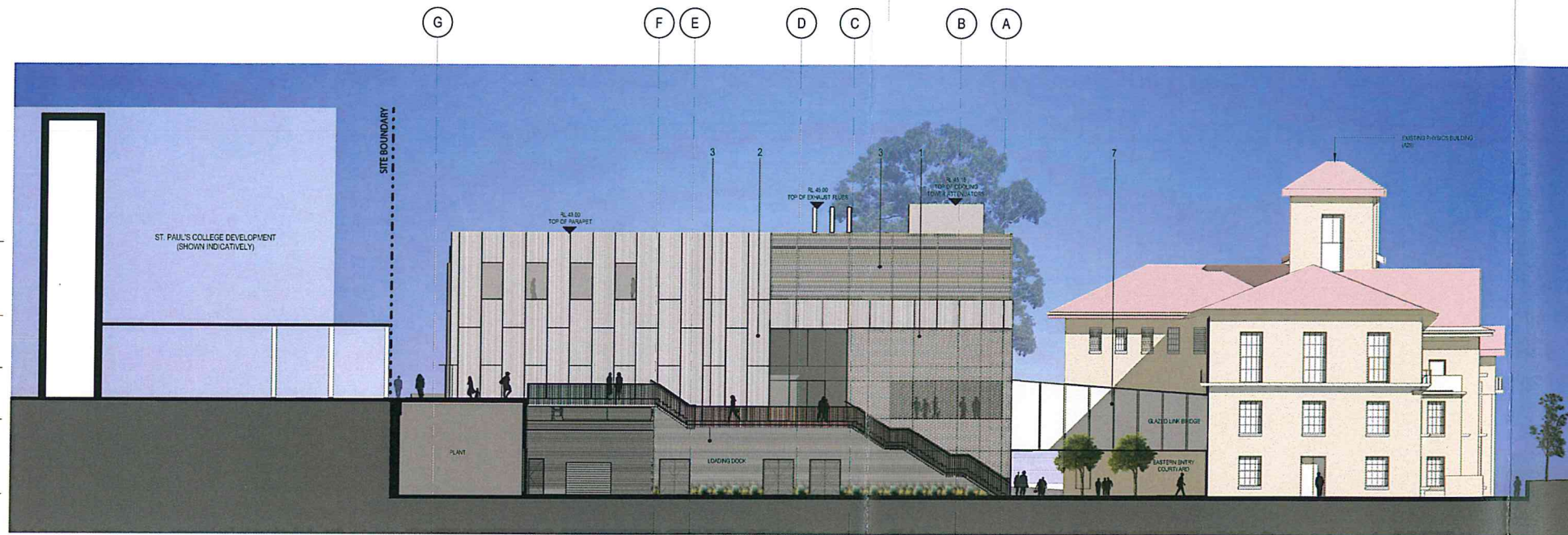
AIN Roof  
RL 42.500

AIN L4  
RL 37.200

AIN L3  
RL 33.600

AIN L2  
RL 30.000

AIN L1  
RL 25.000



1 East Elevation  
Scale: 1:200

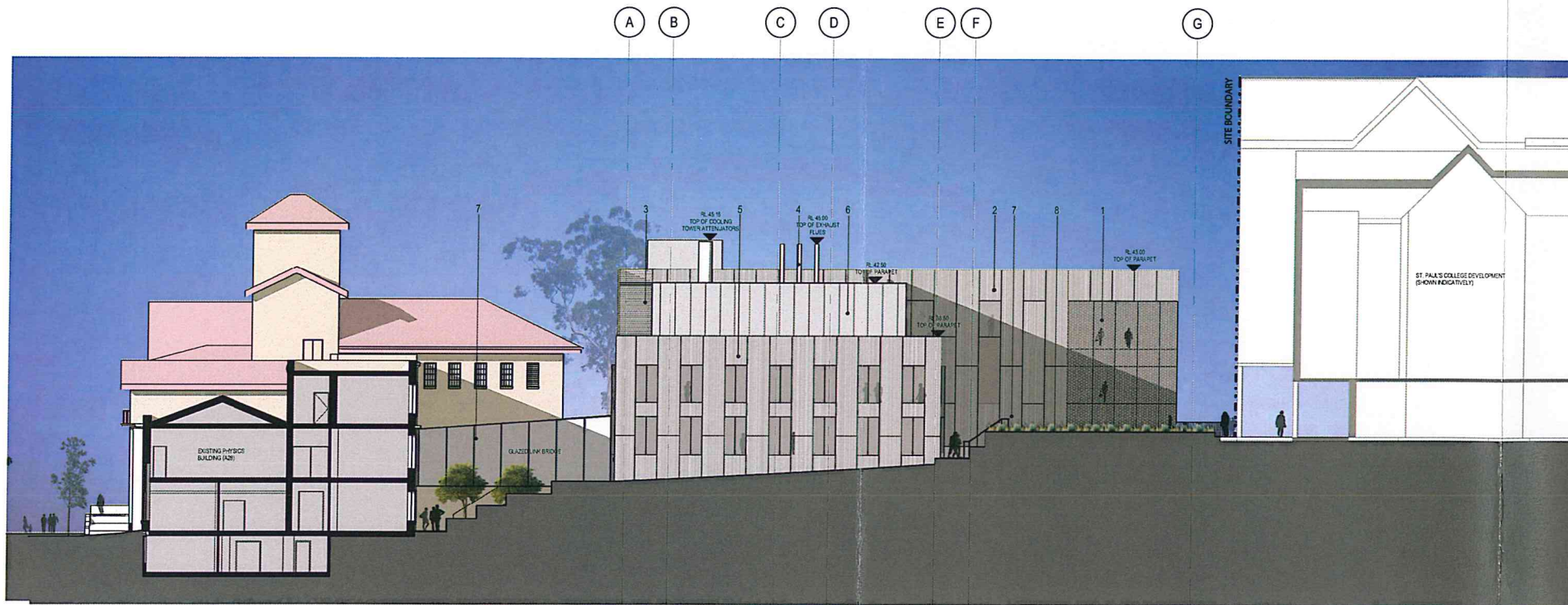
AIN Roof  
RL 42.500

AIN L4  
RL 37.200

AIN L3  
RL 33.600

AIN L2  
RL 30.000

AIN L1  
RL 25.000



2 West Elevation  
Scale: 1:200



NSW GOVERNMENT  
Planning

Issued under the Environmental Planning and Assessment Act 1979

Approved Application No. SSD 5087-2011

granted on the 15 October 2013

Signed [Signature]

Sheet No. 13 of 21

Warren Smith & Partners Pty Ltd

Level 1  
123 Clarence Street  
Sydney NSW 2000  
T (61 2) 9299 1312



Level 1  
60 Miller Street  
North Sydney NSW 2060  
T (61 2) 9928 6800



Levels 11-21  
51 Underwood Road  
Homebush NSW 2140  
T (61 2) 9878 4038



Level 4 The Bond  
30 Hickson Road  
Millers Point NSW 2000  
T (61 2) 9236 6111



Level 21  
420 George Street  
Sydney NSW 2000  
T (61 2) 9934 0000

architectus™

Architectus Sydney  
Level 3 341 George Street  
Sydney NSW 2000  
T (61 2) 8252 8400  
F (61 2) 8252 8600  
sydney@architectus.com.au

ABN 11 098 489 448

checked RO scale 1:200@A1  
drawn AB project no 120240

LEGEND

1. FLUSH GLAZED CURTAIN-WALLING SYSTEM WITH FRIT PATTERN
2. ALUMINIUM FACED COMPOSITE CLADDING PANEL - NATURAL BRUSHED ALUMINIUM FINISH
3. EXTRUDED ALUMINIUM LOUVRES WITH NATURAL ANODISED FINISH
4. STAINLESS STEEL EXHAUST STACK FLUE SHROUD
5. FLUSH GLAZED ALUMINIUM FRAMED WINDOW SYSTEM
6. STEEL FACED COMPOSITE CLADDING PANEL WITH SILVER POLYESTER POWDER COATED FINISH
7. FLUSH GLAZED CURTAIN WALLING SYSTEM - CLEAR GLASS NO FRIT
8. IN-SITU CONCRETE - CLEAR FINISH
9. EXTRUDED ALUMINIUM SUNSHADING - NATURAL ANODISED FINISH

project Australian Institute of Nanoscience

Development Application

drawing Elevations - Sheet 2

drawing no. DA-3001 issue 2

22/07/2013 6:13:24 PM

©architectus Sydney 2011

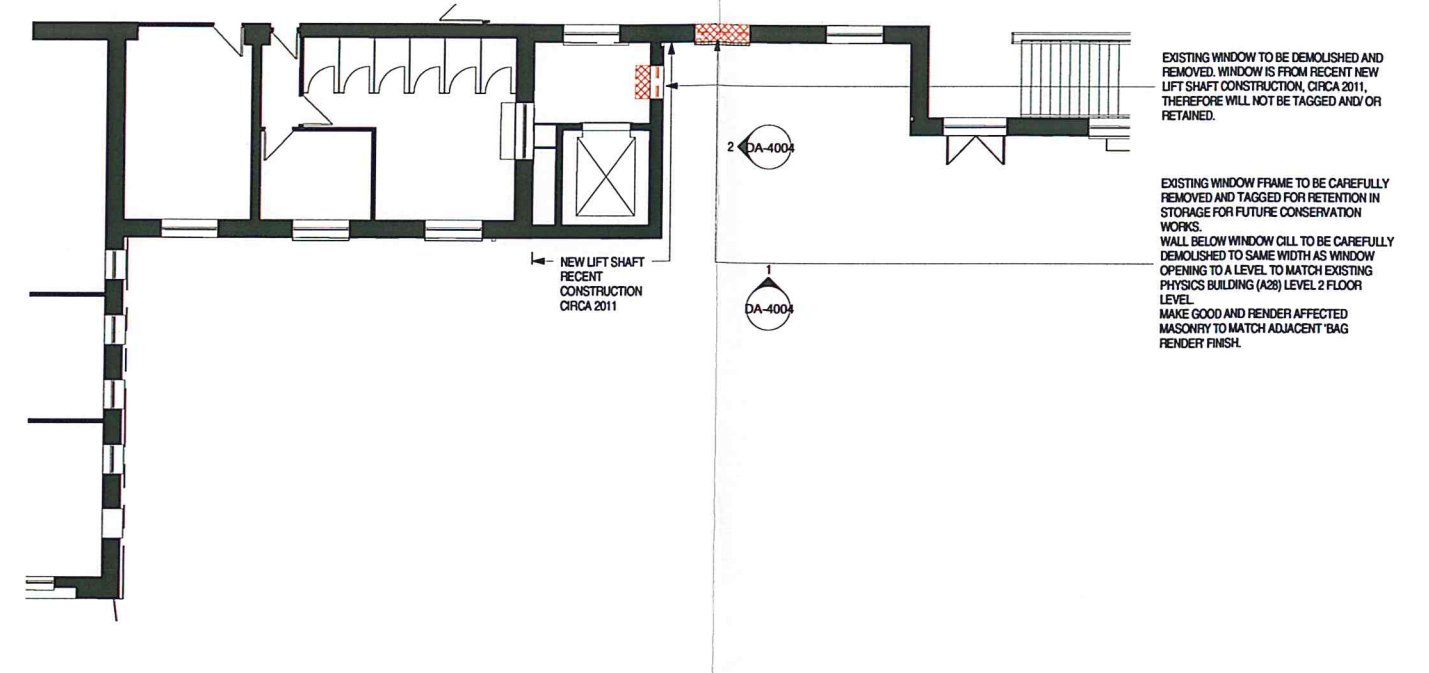
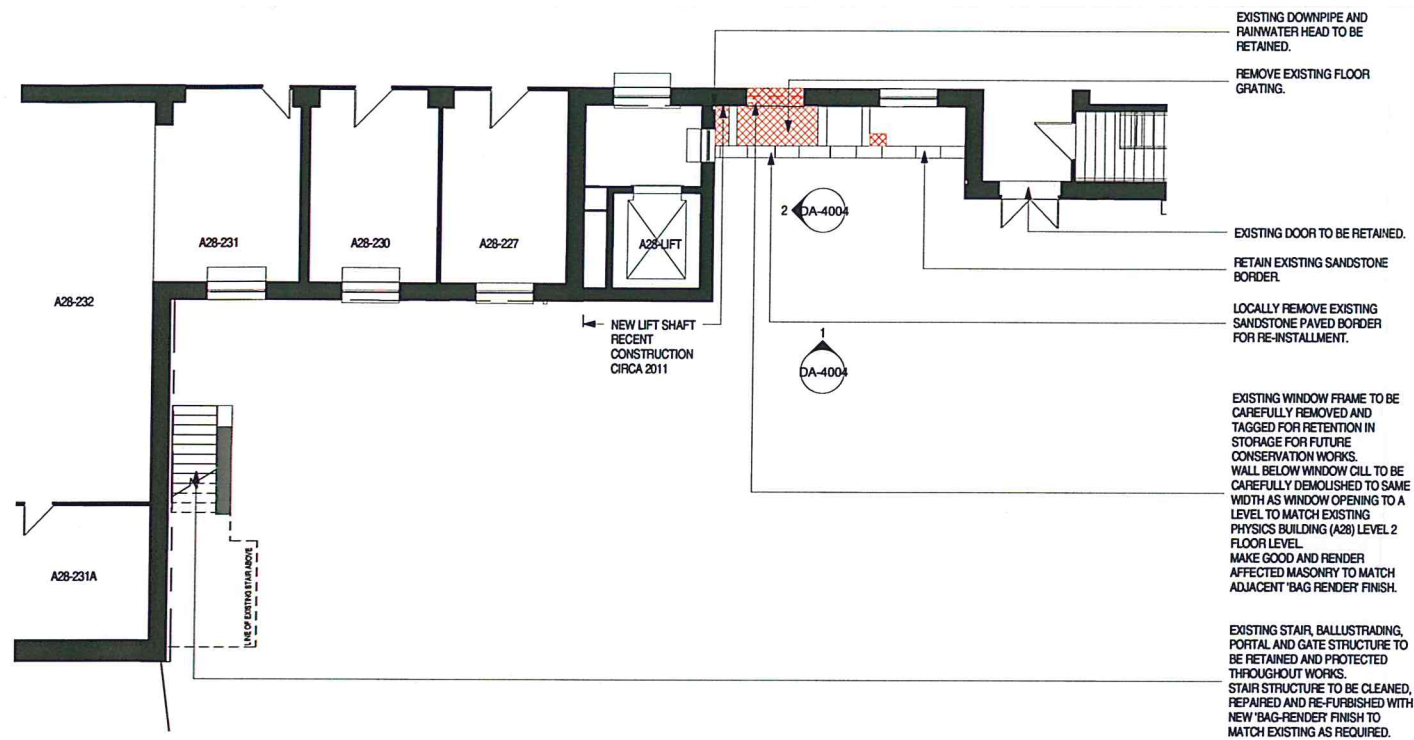
Architectus Sydney Pty Ltd is the owner of the copyright  
subsisting in these drawings, plans, designs and specifications.  
They must not be used, reproduced or copied, in whole or in  
part, nor may the information, ideas and concepts therein  
contained (which are confidential to Architectus Sydney Pty Ltd)  
be disclosed to any person without the prior written consent of  
that company.

Do not scale drawings.  
Verify all dimensions on site









1 Demolition A28 - Link West - RL25.0  
Scale: 1:100

2 Demolition A28 - Link West - RL29.0  
Scale: 1:100



©architectus Sydney 2011

Architectus Sydney Pty Ltd is the owner of the copyright subsisting in these drawings, plans, designs and specifications. They must not be used, reproduced or copied, in whole or in part, nor may the information, ideas and concepts therein be disclosed to any person without the prior written consent of that company.

Do not scale drawings.  
Verify all dimensions on site

issue	amendment	date
1	DEVELOPMENT APPLICATION	19.06.2013

issue	amendment	date

Warren Smith & Partners Pty Ltd

Level 1  
123 Clarence Street  
Sydney NSW 2000  
T (61 2) 9299 1312

M+W GROUP

Levels 11-21  
51 Underwood Road  
Homebush NSW 2140  
T (61 2) 9678 4038

Norman  
Disney &  
Young

Level 1  
60 Miller Street  
North Sydney NSW 2000  
T (61 2) 9928 6800

Lend Lease

Level 4 The Bond  
30 Hickson Road  
Mills Point NSW 2000  
T (61 2) 9236 6111

AECOM

Level 21  
420 George Street  
Sydney NSW 2000  
T (61 2) 9934 0090

Sydney  
Melbourne  
Auckland  
Brisbane  
Shanghai

architectus™

Architectus Sydney  
Level 3 341 George Street  
Sydney NSW 2000  
T (61 2) 8252 8400  
F (61 2) 8252 8600  
sydney@architectus.com.au

ABN 11 098 489 448

checked	RO	scale	1:100@A1
drawn	SE	project no	120240

project  
Australian Institute of Nanoscience

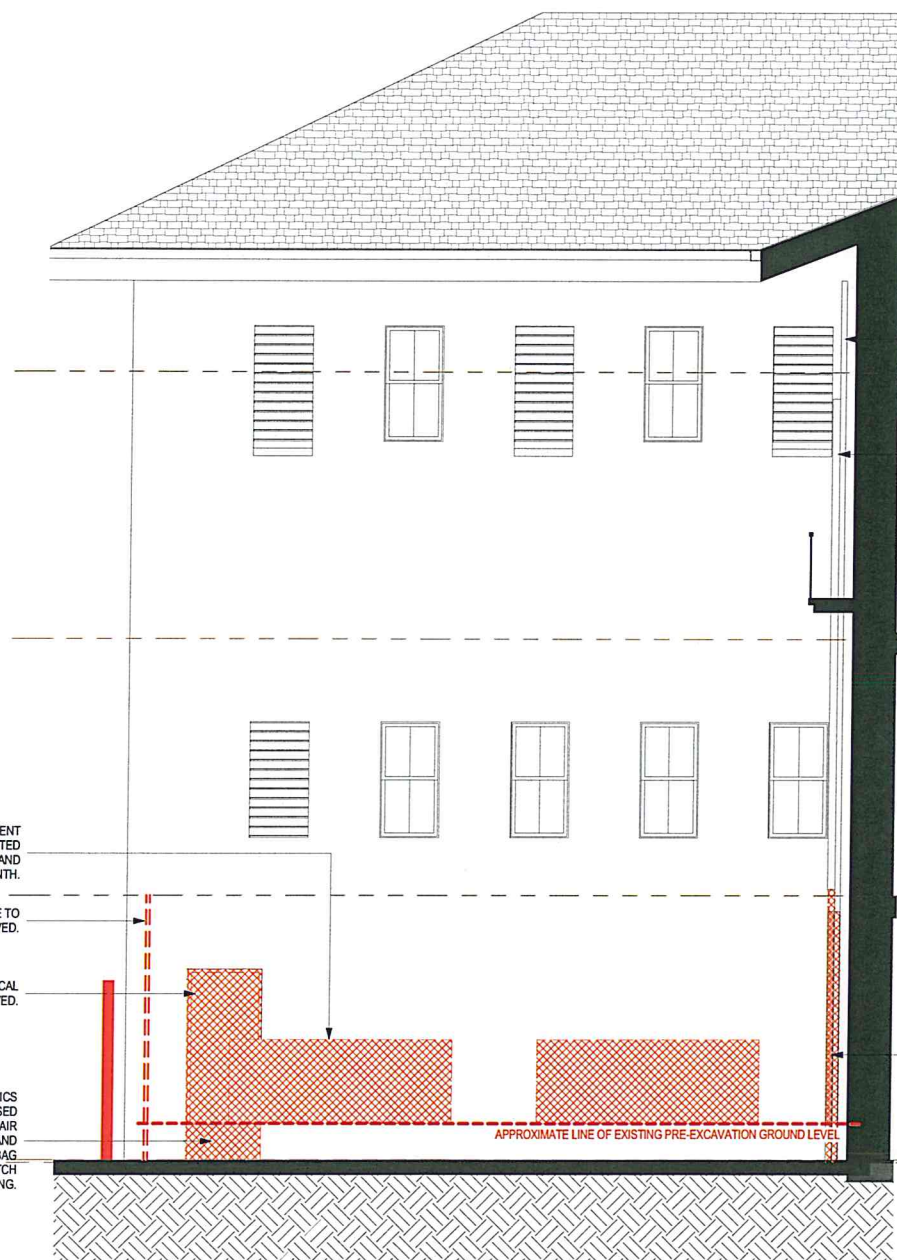
Development Application

drawing  
Existing / Demolition - West Link Plans

drawing no.  
DA-4001

18/06/2013 9:38:27 PM





RETAIN EXISTING DOWNPIPE

RETAIN EXISTING MECHANICAL PIPEWORK

REMAINING BRIDGE LINK STRUCTURE + CLADDING TO BE DEMOLISHED AND REMOVED. MAKE GOOD WALL WHERE AFFECTED BY REMOVAL WORKS.

REMOVE EXISTING DOOR AND ASSOCIATED FRAMING. DOOR IS NOT ORIGINAL (CIRCA 1964) AND WILL NOT BE TAGGED AND/OR RETAINED. WALL CONSTRUCTION BELOW CILL LEVEL TO BE DEMOLISHED AND REMOVED TO EXTEND DOOR OPENING TO MATCH EXISTING PHYSICS BUILDING, NOMINALLY RL 24.95.

REMOVE MECHANICAL PIPEWORK AND ASSOCIATED FIXING BRACKETS

WHERE EXISTING PHYSICS BUILDING (A28) WALL IS EXPOSED FOLLOWING EXCAVATION, REPAIR MASONRY AS REQUIRED AND REFINISH. RE-INSTATE BAG RENDER FINISH TO MATCH EXISTING.



A28 - Level 5  
RL 35.747

A28 - Level 4  
RL 32.100  
RETAIN EXISTING DOWNPIPE

A28 - Level 3  
RL 28.600

AIN L1  
RL 25.000  
A28 - Level 2  
RL 24.962

# 1 Demolition A28 - Link East - Facade 1 (Lecture Theatre)

Scale: 1:50



NSW GOVERNMENT  
Planning

Issued under the Environmental Planning and Assessment Act 1979

Approved Application No. SSO 5087-2011

granted on the 15 OCTOBER 2013

Signed [Signature]

Sheet No. 16 of 21

Warren Smith & Partners Pty Ltd

Level 1  
123 Clarence Street  
Sydney NSW 2000  
T (61 2) 9299 1312

# 2 Demolition A28 - Link East - Facade 2

Scale: 1:50



Level 1  
60 Miller Street  
North Sydney NSW 2060  
T (61 2) 9928 6800

M+W GROUP

Levels 11-21  
51 Underwood Road  
Homebush NSW 2140  
T (61 2) 9678 4038



Level 4 The Bond  
30 Hickson Road  
Mills Point NSW 2000  
T (61 2) 9236 6111

AECOM

Level 21  
420 George Street  
Sydney NSW 2000  
T (61 2) 8934 0000

architectus™

Architectus Sydney  
Level 3 341 George Street  
Sydney NSW 2000  
T (61 2) 8252 8400  
F (61 2) 8252 8600  
sydney@architectus.com.au

ABN 11 098 489 448

Sydney  
Melbourne  
Auckland  
Brisbane  
Shanghai

checked RO scale 1:50@A1  
drawn SE project no 120240

project Australian Institute of Nanoscience  
Development Application

drawing Existing / Demolition - East Link -  
Elevations - Sheet 1

drawing no. DA-4002 issue 3

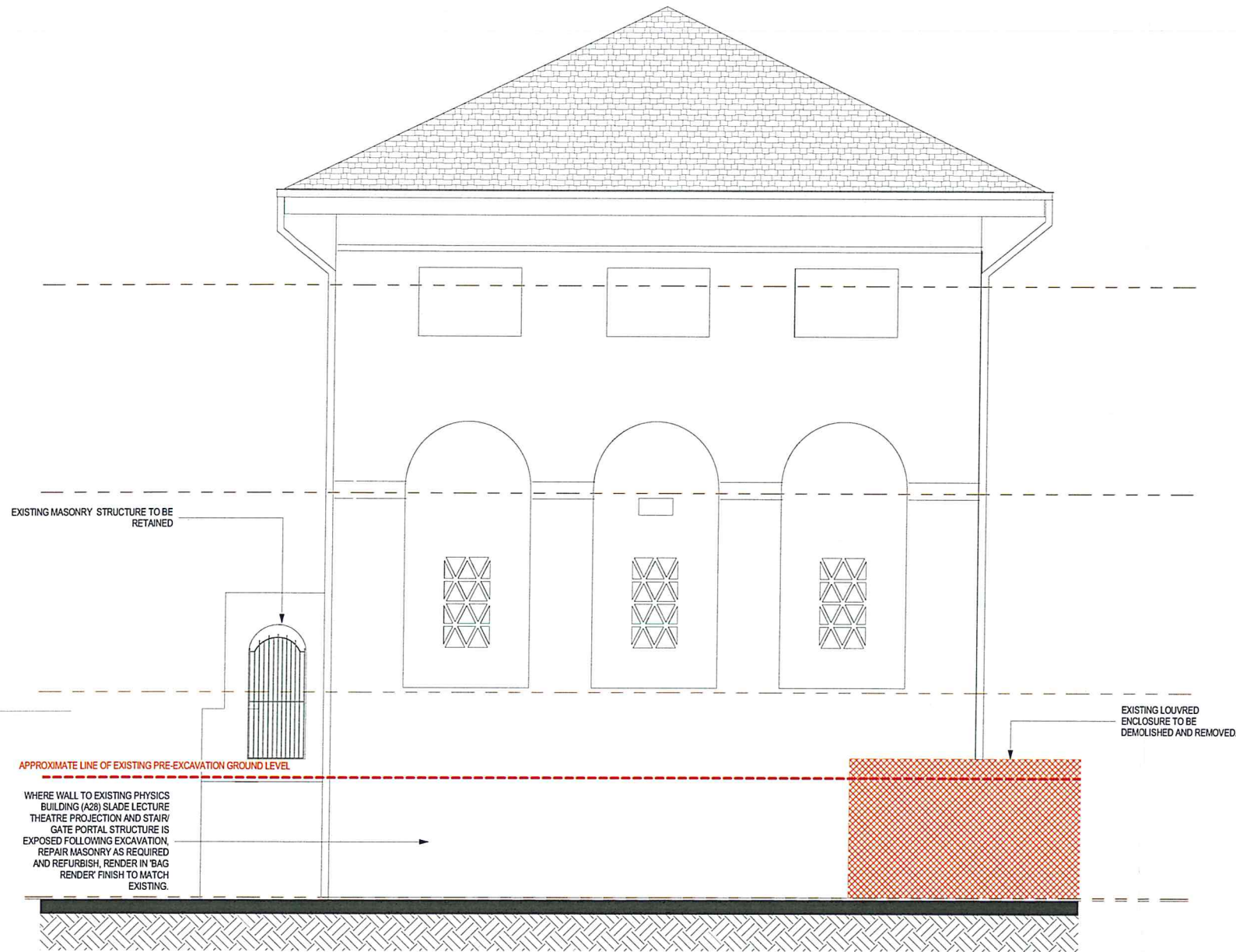
22/07/2013 6:48:33 PM

\*architectus\* Sydney 2011

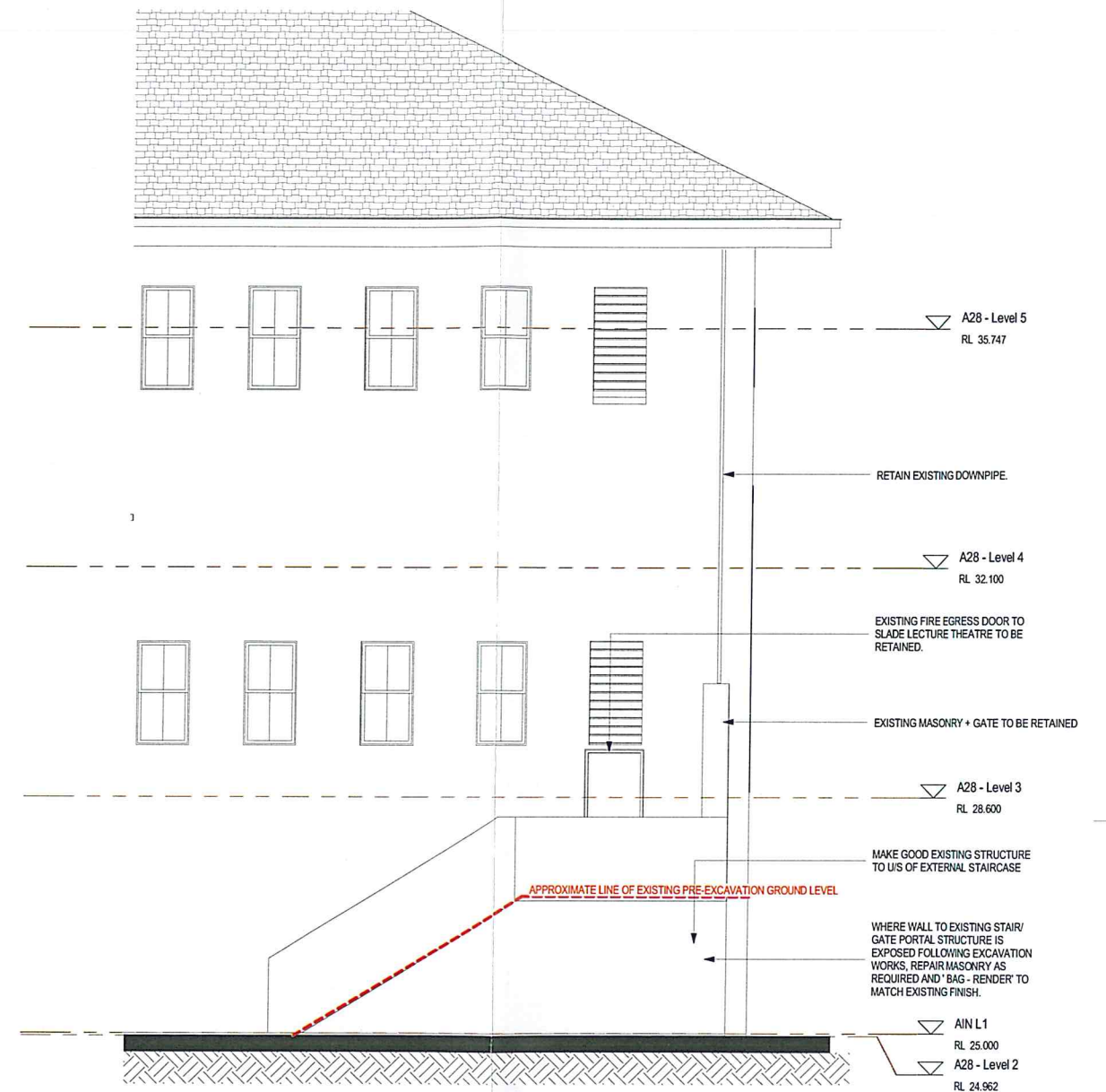
Architectus Sydney Pty Ltd is the owner of the copyright subsisting in these drawings, plans, designs and specifications. They must not be used, reproduced or copied, in whole or in part, nor may the information, ideas and concepts therein contained (which are confidential to Architectus Sydney Pty Ltd) be disclosed to any person without the prior written consent of that company.

Do not scale drawings.  
Verify all dimensions on site





1 Demolition Lecture Theatre Facade  
Scale: 1:50



2 Demolition AIN - Link Lecture Theatre Facade (West)  
Scale: 1:50



NSW GOVERNMENT  
Planning

Issued under the Environmental Planning and Assessment Act 1979

Approved Application No. SSD 5087-2011

granted on the 15 OCTOBER 2013

Signed [Signature] 19/06/2013

Sheet No. 17 of 21

Warren Smith & Partners Pty Ltd

Level 1  
123 Clarence Street  
Sydney NSW 2000  
T (61 2) 9299 1312

Norman  
Disney &  
Young  
Level 1  
60 Miller Street  
North Sydney NSW 2060  
T (61 2) 9928 6800

M+W GROUP  
Levels 11-21  
51 Underwood Road  
Homebush NSW 2140  
T (61 2) 9878 4038

Lend Lease  
Level 4 The Bond  
30 Hickson Road  
Millers Point NSW 2000  
T (61 2) 9236 6111

AECOM  
Level 21  
420 George Street  
Sydney NSW 2000  
T (61 2) 8534 0000

architectus™

Architectus Sydney  
Level 3 341 George Street  
Sydney NSW 2000  
T (61 2) 8252 8400  
F (61 2) 8252 8600  
sydney@architectus.com.au

ABN 11 098 489 448

project  
Australian Institute of Nanoscience  
Development Application

drawing  
Existing / Demolition - East Link -  
Elevations - Sheet 2

drawing no. DA-4003  
issue 2

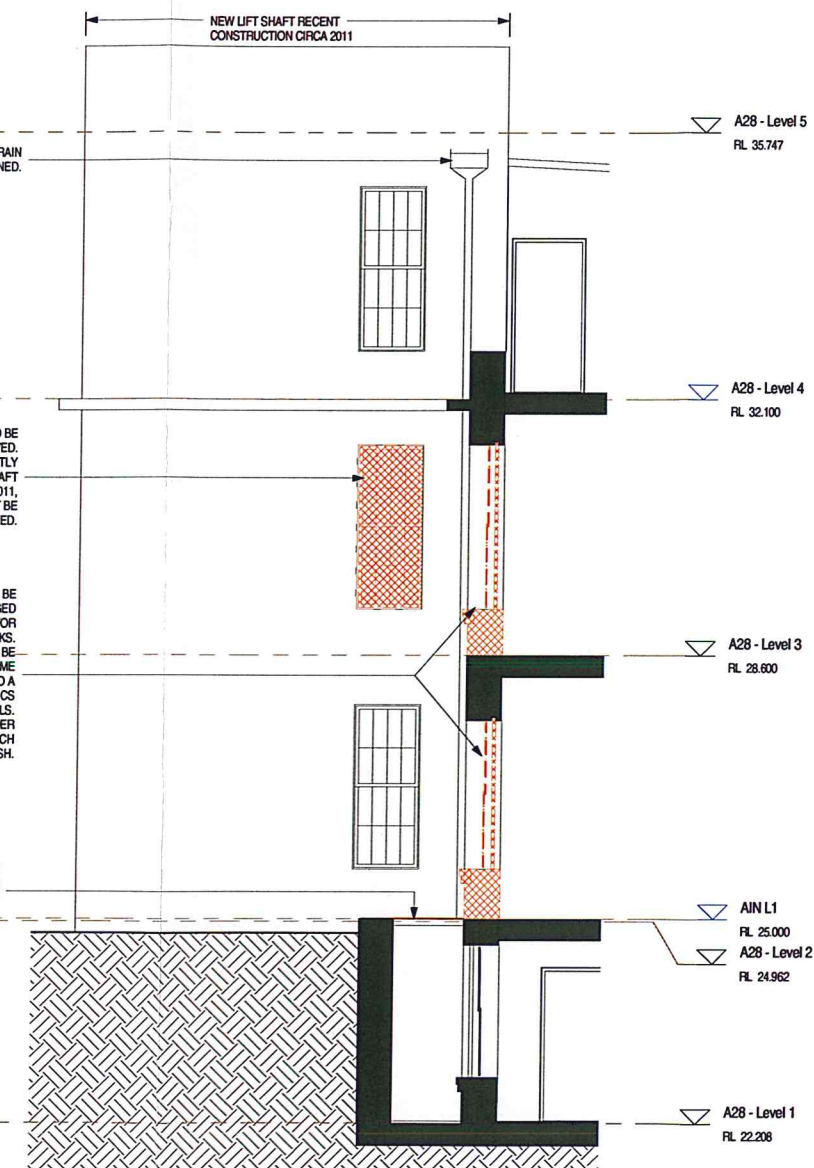
22/07/2013 6:48:34 PM

©architectus Sydney 2011

Architectus Sydney Pty Ltd is the owner of the copyright subsisting in these drawings, plans, designs and specifications. They must not be used, reproduced or copied, in whole or in part, nor may the information, ideas and concepts therein contained (which are confidential to Architectus Sydney Pty Ltd) be disclosed to any person without the prior written consent of that company.

Do not scale drawings.  
Verify all dimensions on site





1 Demolition A28 - West Link  
Scale: 1:50

2 Demolition A28 - West Link - Lift Core Facade  
Scale: 1:50



NSW GOVERNMENT  
Planning

Issued under the Environmental Planning and Assessment Act 1979

Approved Application No. SSD 5087-2011

granted on the 15 OCTOBER 2013

Signed [Signature]

Sheet No. 18 of 21

Warren Smith & Partners Pty Ltd

M+W GROUP

Norman  
Disney &  
Young  
Level 1  
60 Miller Street  
North Sydney NSW 2060  
T (61 2) 9236 6111

Lend Lease  
Level 4 The Bond  
30 Hickson Road  
Millers Point NSW 2000  
T (61 2) 9236 6111

AECOM  
Level 21  
420 George Street  
Sydney NSW 2000  
T (61 2) 9234 0000

architectus™  
Architectus Sydney  
Level 3 341 George Street  
Sydney NSW 2000  
T (61 2) 8252 8400  
F (61 2) 8252 8600  
sydney@architectus.com.au  
ABN 11 096 489 448

project  
Australian Institute of Nanoscience  
Development Application  
drawing  
Existing / Demolition - West Link -  
Elevations

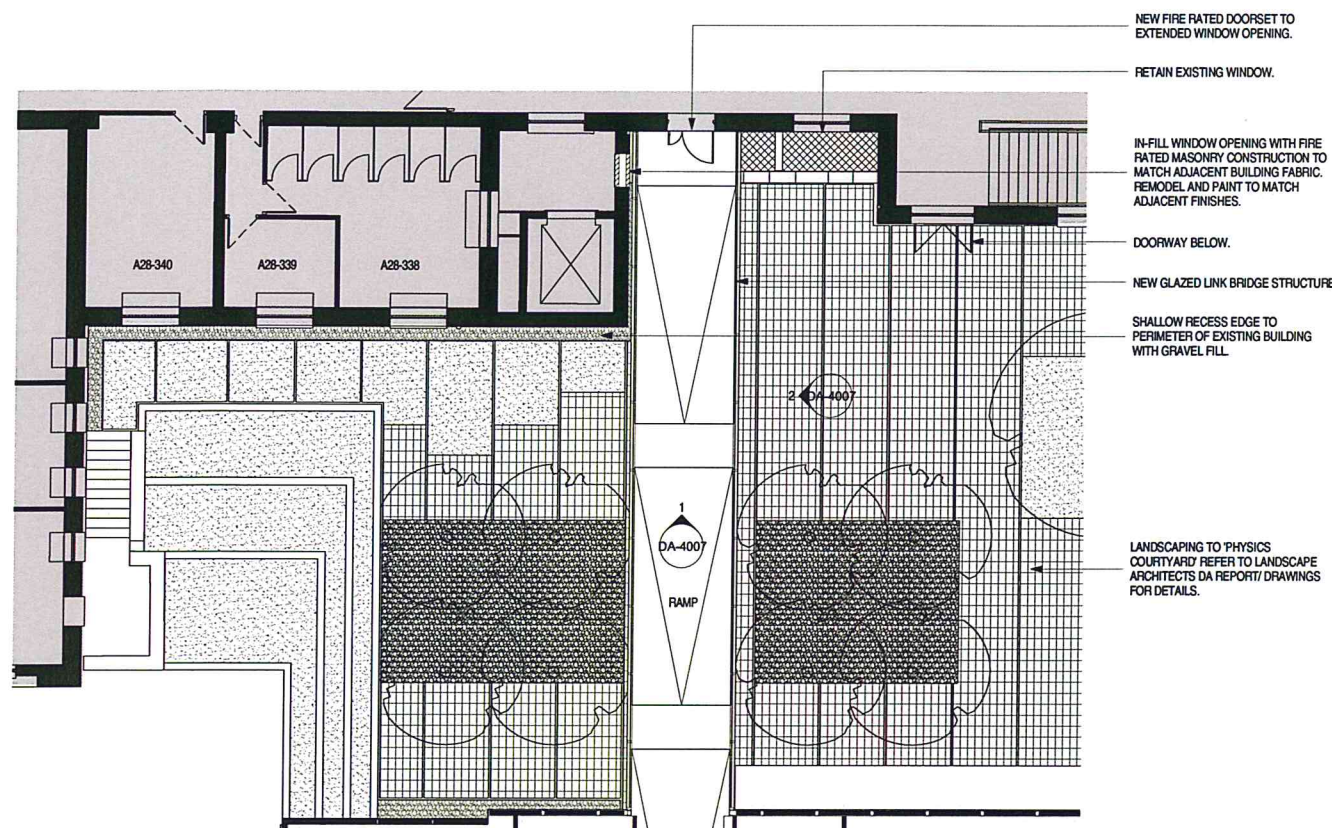
drawing no. DA-4004 issue 1

18/06/2013 9:38:39 PM

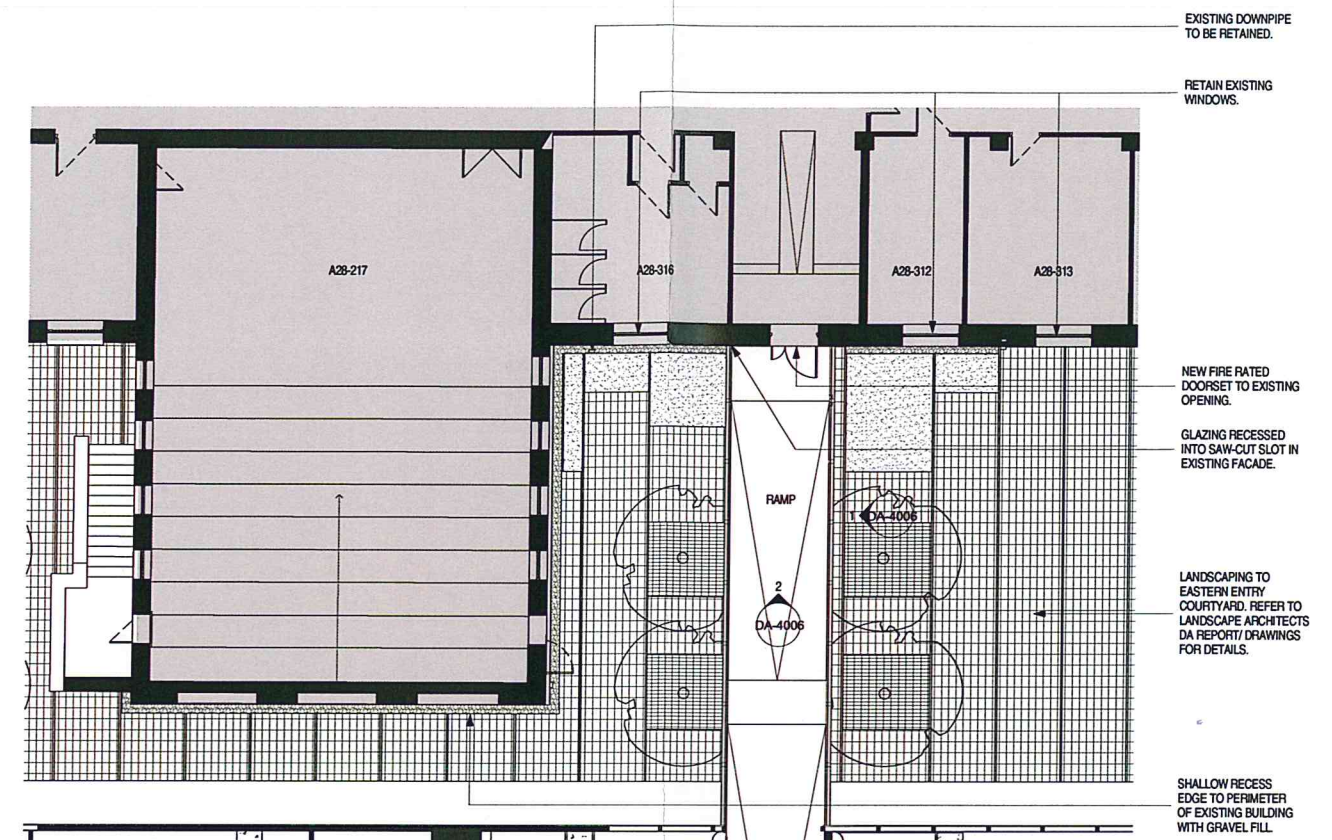
\*architectus Sydney 2011  
Architectus Sydney Pty Ltd is the owner of the copyright  
subsisting in these drawings, plans, designs and specifications.  
They must not be used, reproduced or copied, in whole or in  
part, nor may the information, ideas and concepts therein  
contained (which are confidential to Architectus Sydney Pty Ltd)  
be disclosed to any person without the prior written consent of  
that company.

Do not scale drawings.  
Verify all dimensions on site





1 Proposed - Link West - RL29.0 new  
Scale: 1:100



2 Proposed - Link East - RL29.0 new  
Scale: 1:100



NSW GOVERNMENT  
Planning

Issued under the Environmental Planning and Assessment Act 1979

Approved Application No. 550 5087 2011

granted on the 15 OCTOBER 2013

Signed [Signature]

Sheet No. 19 of 21 NOTES

ALL NEW INTERNAL AND EXTERNAL FINISHES AND WORKS OF MAKING GOOD TO THE EXISTING PHYSICS BUILDING (A28) SHALL MATCH THE EXISTING ORIGINAL WORK ADJACENT IN RESPECT OF MATERIALS USED, DETAILED EXECUTION AND FINISHED APPEARANCE.

ORIGINAL FABRIC FROM THE EXISTING PHYSICS BUILDING (TO BE REMOVED) IS TO BE TAGGED AND STORED FOR FUTURE CONSERVATION WORKS.



architectus Sydney 2011

Architectus Sydney Pty Ltd is the owner of the copyright subsisting in these drawings, plans, designs and specifications. They must not be used, reproduced or copied, in whole or in part, nor may the information, ideas and concepts therein contained (which are confidential to Architectus Sydney Pty Ltd) be disclosed to any person without the prior written consent of that company.

Do not scale drawings.  
Verify all dimensions on site

issue	amendment	date
1	DEVELOPMENT APPLICATION	19.06.2013

issue	amendment	date



Warren Smith & Partners Pty Ltd

Level 1  
123 Clarence Street  
Sydney NSW 2000  
T (61 2) 9299 1312



Level 1  
60 Miller Street  
North Sydney NSW 2060  
T (61 2) 9228 6800

M+W GROUP

Levels 11-21  
51 Underwood Road  
Homebush NSW 2140  
T (61 2) 9678 4038



Level 4 The Bond  
30 Hickson Road  
Millers Point NSW 2000  
T (61 2) 9236 6111

AECOM

Level 21  
420 George Street  
Sydney NSW 2000  
T (61 2) 9534 0000

architectus

Architectus Sydney  
Level 3 341 George Street  
Sydney NSW 2000  
T (61 2) 8252 8400  
F (61 2) 8252 8600  
sydney@architectus.com.au

ABN 11 098 489 448

Sydney  
Melbourne  
Auckland  
Brisbane  
Shanghai

checked	RO	scale	1:100@A1
drawn	SE	project no	120240

project Australian Institute of Nanoscience

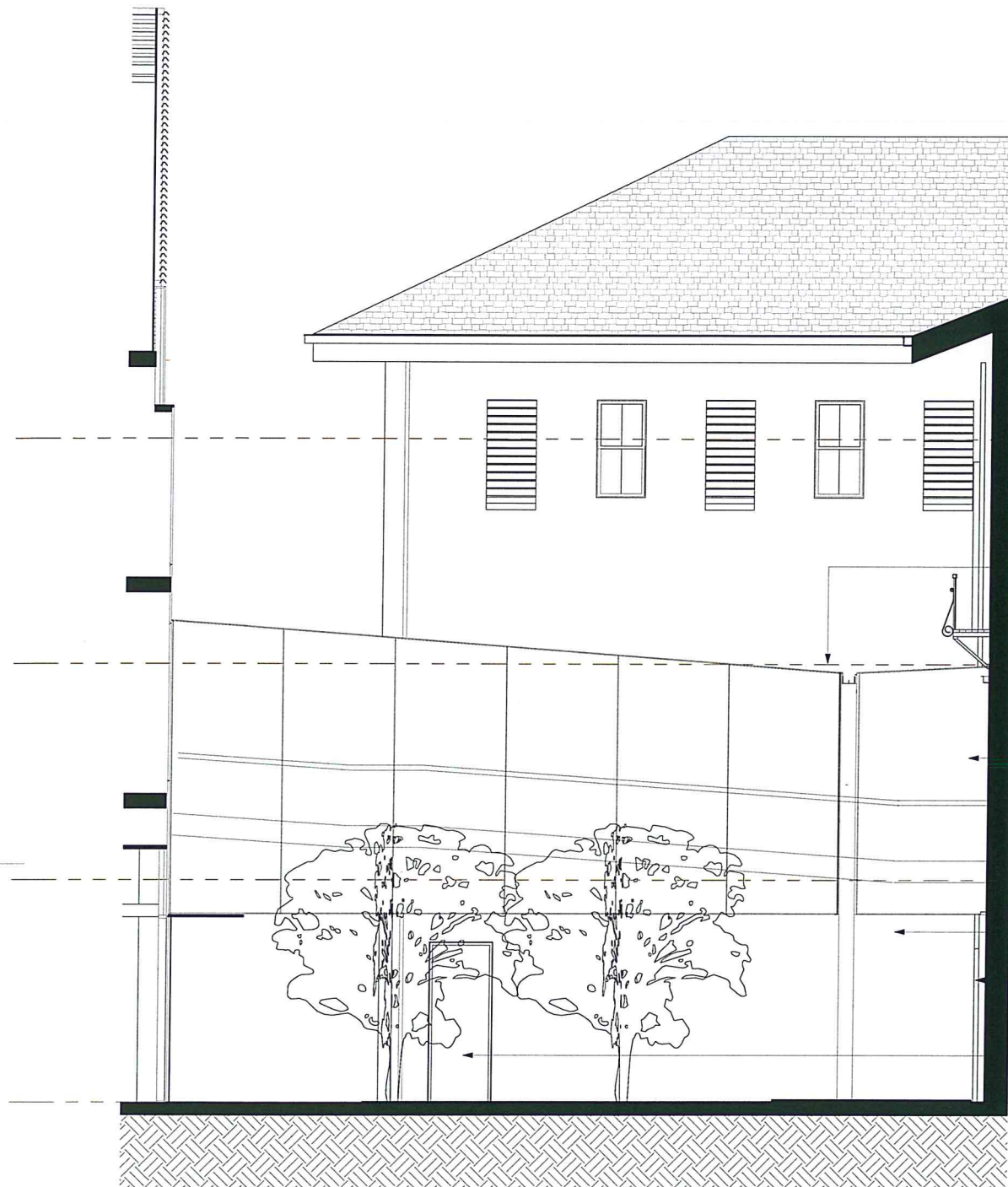
Development Application

drawing Proposed - West Link and East Link Plans

drawing no. DA-4005 issue 1

18/06/2013 9:38:44 PM





NEW STEEL FRAMED, GLAZED LINK  
BRIDGE TO CONNECT AIN TO  
EXISTING PHYSICS BUILDING (A28).

FINAL GLAZING PANEL FIXED INTO  
RECESS IN WALL OF EXISTING PHYSICS  
BUILDING. RECESS NOMINALLY 50MM  
DEEP AND 50MM WIDE.

NEW STEEL COLUMNS TO FUTURE  
DETAIL.

EXISTING DOWNPIPE TO BE  
RETAINED.

EXTEND DOOR OPENING TO  
PROVIDE ACCESS TO  
PLANTROOM. LOCALLY REMOVE  
EXISTING INTERNAL STEPS.  
REPLACE DOORSET WITH NEW  
FIRE RATED DOORSET TO MATCH  
EXISTING.



A28 - Level 5  
RL 35.747

A28 - Level 4  
RL 32.100

NEW STEEL  
FRAMED, GLAZED LINK  
BRIDGE STRUCTURE.

NEW FIRE RATED  
DOORSET TO EXISTING  
OPENING TO FUTURE  
DETAIL.

RETAIN ALL EXISTING  
WINDOWS - TYPICAL.

A28 - Level 3  
RL 28.600

RECONNECT EXISTING  
MECHANICAL PIPEWORK +  
BRACKETS. RETICULATE TO  
UNDERSIDE OF BRIDGE LINK.

NEW FIRE RATED  
DOORSET TO EXISTING  
OPENING TO FUTURE  
DETAIL.

AIN L1  
RL 25.000

RETAIN EXISTING  
DOWNPIPE.

# 1 Proposed - Link East - Facade 1 (Lecture Theatre)

Scale: 1:50



NSW GOVERNMENT  
Planning

Issued under the Environmental Planning and Assessment Act 1979

Approved Application No. SSO 5087-2011

granted on the 15 October 2013 date

Issue	Amended	date
1 DEVELOPMENT APPLICATION		19.06.2013
2 DEVELOPMENT APPLICATION		22.07.2013
Signed		
Sheet No. <u>20</u>	of <u>21</u>	

# 2 Proposed - Link East - Facade 2

Scale: 1:50

## NOTES

- ALL NEW INTERNAL AND EXTERNAL FINISHES AND WORKS OF  
MAKING - GOOD TO THE EXISTING PHYSICS BUILDING (A28) SHALL  
MATCH THE EXISTING ORIGINAL WORK ADJACENT IN RESPECT OF  
MATERIALS USED, DETAILED EXECUTION AND FINISHED APPEARANCE.

- ORIGINAL FABRIC FROM THE EXISTING PHYSICS BUILDING ( TO BE  
REMOVED) IS TO BE TAGGED AND STORED FOR FUTURE  
CONSERVATION WORKS.

\*architectus Sydney 2011

Architectus Sydney Pty Ltd is the owner of the copyright  
subsisting in these drawings, plans, designs and specifications.  
They must not be used, reproduced or copied, in whole or in  
part, nor may the information, ideas and concepts therein  
contained (which are confidential to Architectus Sydney Pty Ltd)  
be disclosed to any person without the prior written consent of  
that company.

Do not scale drawings.  
Verify all dimensions on site

Warren Smith & Partners Pty Ltd

Level 1  
123 Clarence Street  
Sydney NSW 2000  
T (61 2) 9299 1312

M+W GROUP

Levels 11-21  
51 Underwood Road  
Homebush NSW 2140  
T (61 2) 9678 4038



Level 1  
60 Miller Street  
North Sydney NSW 2060  
T (61 2) 9928 6800



Level 4 The Bond  
30 Hickson Road  
Millers Point NSW 2000  
T (61 2) 9236 6111

AECOM

Level 21  
420 George Street  
Sydney NSW 2000  
T (61 2) 9534 0000

architectus™

Architectus Sydney  
Level 3 341 George Street  
Sydney NSW 2000  
T (61 2) 8252 8400  
F (61 2) 8252 8600  
sydney@architectus.com.au

ABN 11 098 489 448

checked RO scale As indicated@A1  
drawn SE project no 120240

project Australian Institute of Nanoscience

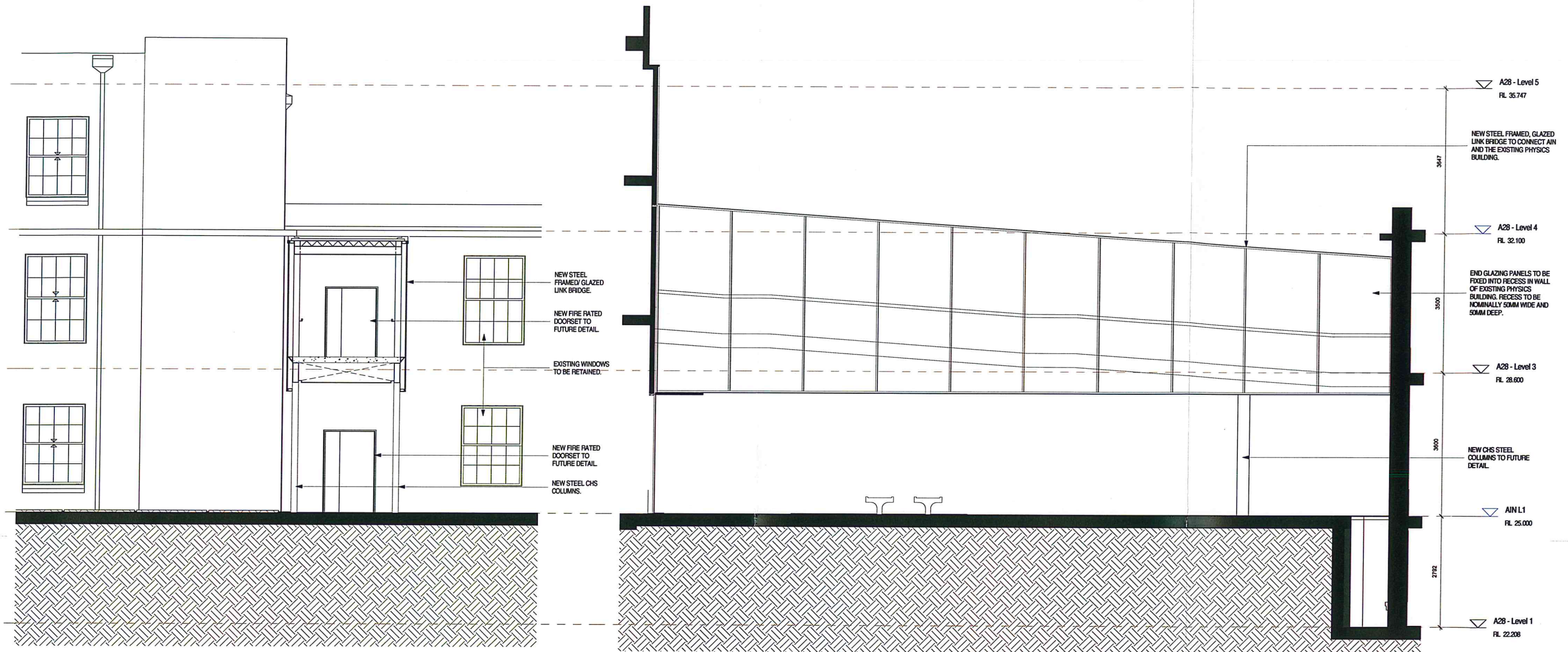
Development Application

drawing Proposed - East Link Elevations

drawing no. DA-4006 issue 2

23/07/2013 3:37:57 PM





1 Proposed - West Link  
Scale: 1:50

2 Proposed - West Link - Lift Core Facade  
Scale: 1:50

**NSW GOVERNMENT Planning**

Issued under the Environmental Planning and Assessment Act 1979

Approved Application No. SSO 5087-2011

granted on the 15 OCTOBER 2013

Signed [Signature] date 19/06/2013

Sheet No. 21 of 21

issue	amendment	date	issue	amendment	date
1	Development Application	19/06/2013			

architectus Sydney 2011

Architectus Sydney Pty Ltd is the owner of the copyright subsisting in these drawings, plans, designs and specifications. They must not be used, reproduced or copied, in whole or in part, nor may the information, ideas and concepts therein contained (which are confidential to Architectus Sydney Pty Ltd) be disclosed to any person without the prior written consent of that company.

Do not scale drawings.  
Verify all dimensions on site

**Warren Smith & Partners Pty Ltd**

Level 1  
123 Clarence Street  
Sydney NSW 2000  
T (61 2) 9299 1312

**Norman Disney & Young**

Level 1  
60 Miller Street  
North Sydney NSW 2060  
T (61 2) 9928 6800

**M+W GROUP**

Levels 11-21  
51 Underwood Road  
Homebush NSW 2140  
T (61 2) 9678 4038

**Lend Lease**

Level 4 The Bond  
30 Hickson Road  
Mills Point NSW 2000  
T (61 2) 9236 6111

**AECOM**

Level 21  
420 George Street  
Sydney NSW 2000  
T (61 2) 8534 0000

Sydney  
Melbourne  
Auckland  
Brisbane  
Shanghai

**architectus™**

Architectus Sydney  
Level 3 341 George Street  
Sydney NSW 2000  
T (61 2) 8252 8400  
F (61 2) 8252 8600  
sydney@architectus.com.au

ABN 11 098 489 448

checked RO scale As indicated@A1  
drawn SE project no 120240

**NOTES**

- ALL NEW INTERNAL AND EXTERNAL FINISHES AND WORKS OF MAKING GOOD TO THE EXISTING PHYSICS BUILDING (A28) SHALL MATCH THE EXISTING ORIGINAL WORK ADJACENT IN RESPECT OF MATERIALS USED, DETAILED EXECUTION AND FINISHED APPEARANCE.

- ORIGINAL FABRIC FROM THE EXISTING PHYSICS BUILDING (TO BE REMOVED) IS TO BE TAGGED AND STORED FOR FUTURE CONSERVATION WORKS.

project Australian Institute of Nanoscience  
Development Application

drawing Proposed - West Link Elevations

drawing no. DA-4007 issue 1

18/06/2013 9:38:54 PM