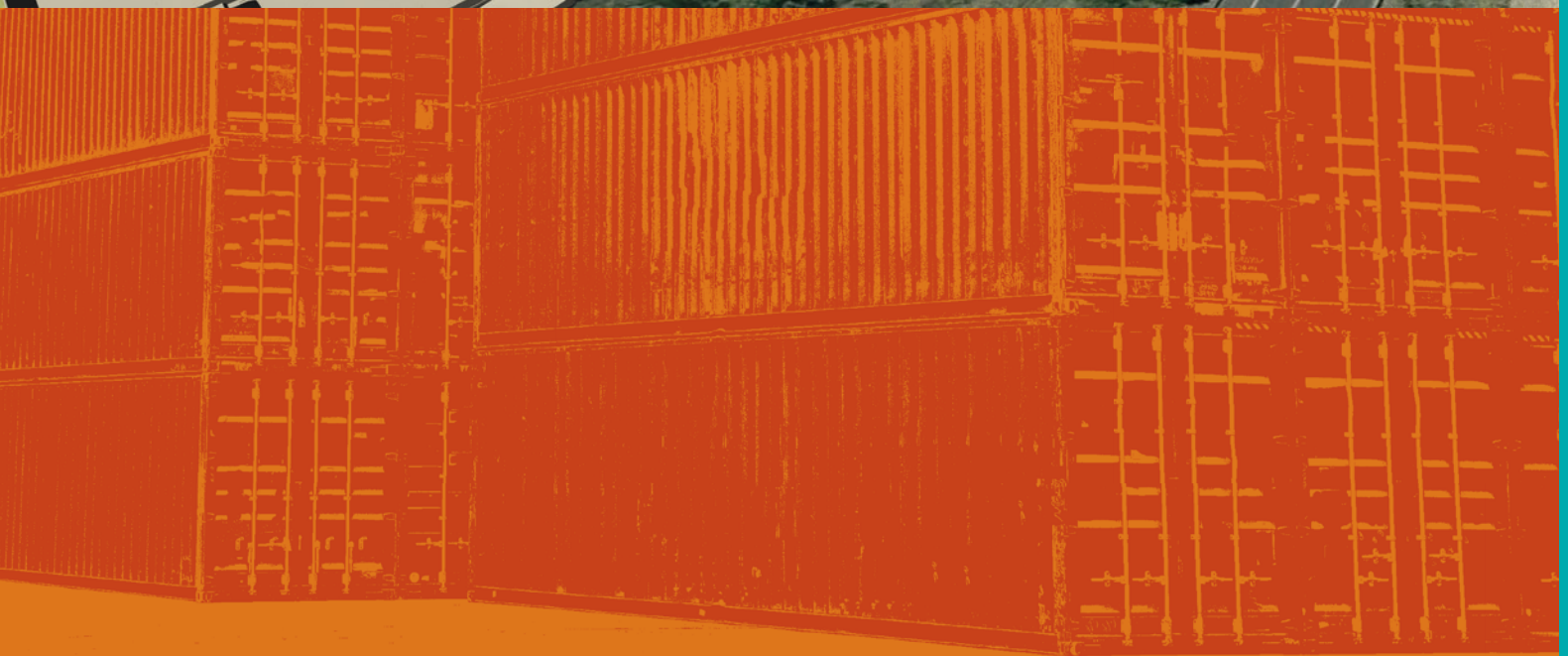


# Appendix K Cultural Heritage Archival Recordings







## 9.5 Sample Set of Photographic Prints





**Figure 8.22 Distant view of W face of B99 building (partly obscured), looking E, (image no. B99 0324)**



**Figure 8.23 View of multiple roller door mid-way along W face of B99 building, (image no. B99 0315)**



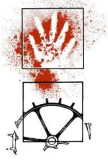


**Figure 8.24 View of whole B99 building looking NE, (image no. B99 0224)**



**Figure 8.25 The southern face of B99 building, looking NE, (image no. B99 0225)**





**Figure 8.26 The S face of B99 building, looking N, (image no. B99 0322)**



**Figure 8.27 The S and E faces of B99 building, looking NW, (image no. B99 0242)**





**Figure 8.28 The whole of the E face of B99 building, looking SW, (image no. B99 0255)**



**Figure 8.29 The N face of building B99, looking S, the large Eucalypts are not evident in 1944 photography, (image no. 0337)**



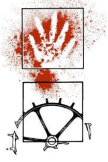


**Figure 8.30 The roller door entrance at the SE corner of the B99 building, looking W, (image no. B99 0245)**



**Figure 8.31 Detail of service and trenches installed subsequent to original construction, SE corner of B99 building, looking W, (image no. B99 0284)**





**Figure 8.32 Remnant section of sliding door track on W side of building, (image no. B99 0293)**

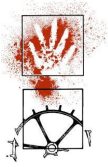


**Figure 8.33 Remnant section of sliding door track on E side of building, (image no. B99 0263)**



**Figure 8.34 End of remnant sliding door track at NE corner of building, (image no. B99 0266)**





**Figure 8.35 Detail (oblique view) of exterior of clerestory windows, (image no. B99 0271)**



**Figure 8.36 Detail of spout end of box gutter, (image no. B99 0262)**



**Figure 8.37 Detail of exterior lighting, looking SW, (image no. B99 0273)**



**Figure 8.38 Detail of possible 'stop' fitting on sliding door rail, (image no. B99 0296)**





**Figure 8.39 General view of paving on W side of building, looking NNE, (image no. B99 0217)**

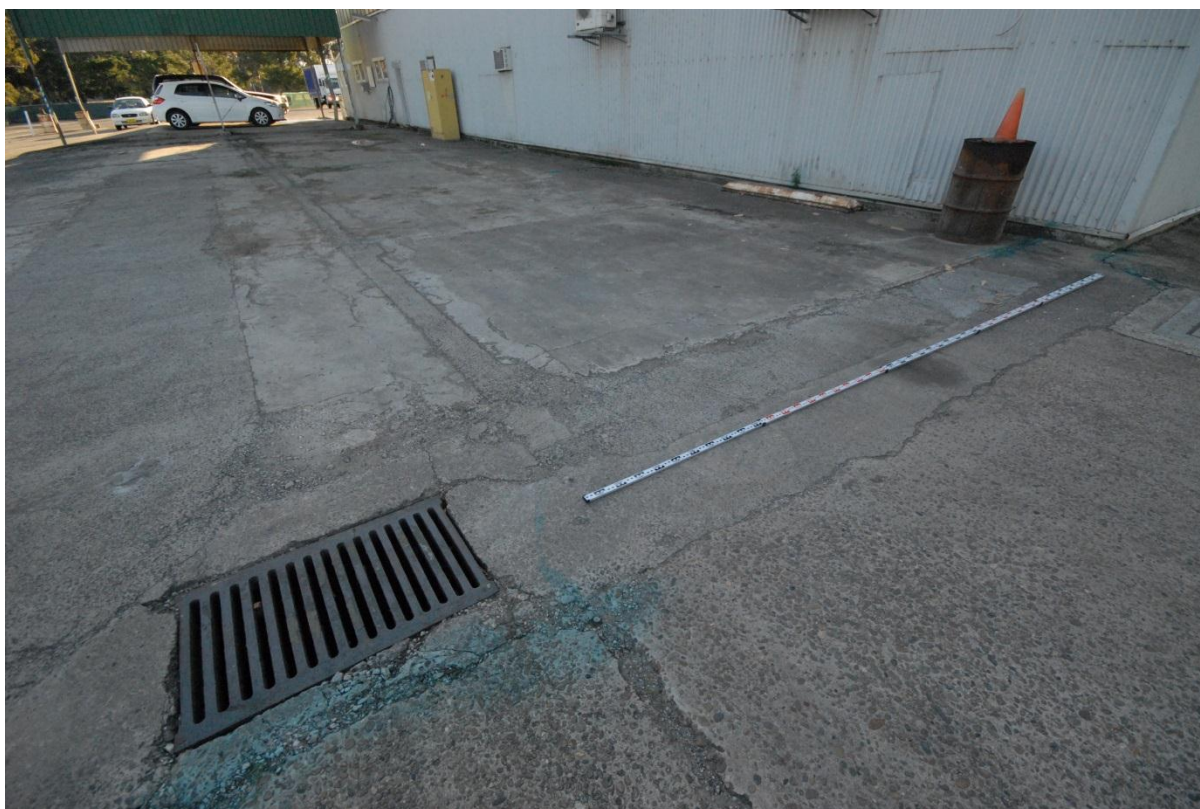


**Figure 8.40 Detail of original surface drainage grill, (image no. B99 0218)**



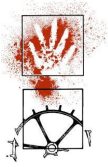


**Figure 8.41 Face-on detail of exterior clerestory window on S face of building, looking N, (image no. B99 0232)**



**Figure 8.42 Detail of infilled trenches in concrete paving on S side of building, indicating former walls of 'Paintshop', looking NW, (image no. B99 0239)**





**Figure 8.43 Internal view of E wall from mid-section of building, note combination of original and new wall framing, (image no. B99 0002)**



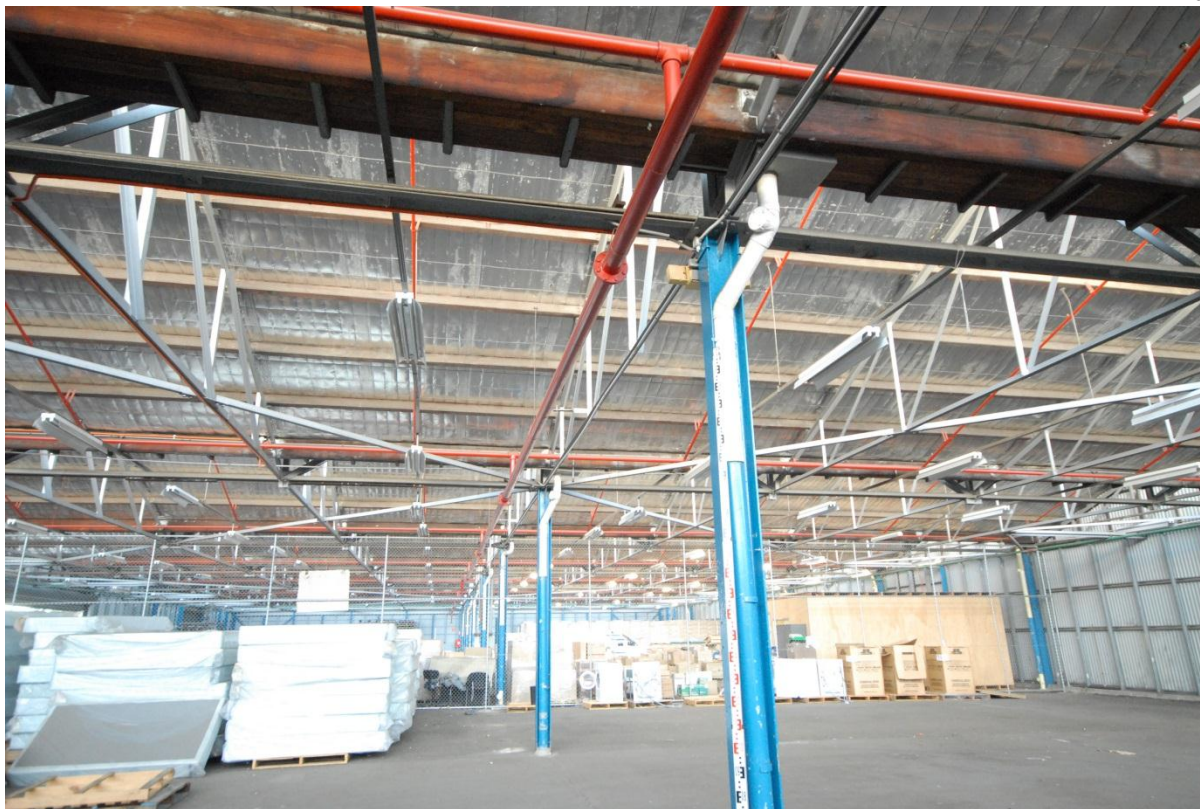
**Figure 8.44 Detail of E wall showing original framing on left and later framing infill of former door opening on right, looking E, (image no. B99 0011)**





X

d



**Figure 8.45 View looking N from midpoint of building, showing roof girders, box drain (top foreground) and cross bracing, (image no. B99 0031)**



**Figure 8.46 Looking at W margin of roof, showing trusses, joining plates, box drain, and cross bracing adjacent to wall, looking NW, (image no. B99 0027)**



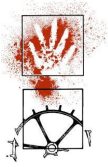


**Figure 8.47 Wide view looking SW towards SW corner of building, showing clerestory window framing, (image no. B99 0076)**



**Figure 8.48 Detail of clerestory window panes, note two varieties of mesh reinforcing, (image no. B99 0124)**





**Figure 8.49 Looking E at originally framed wall unit, with modern door insert on right, (image no. B99 0122)**



**Figure 8.50 Wide view of roof and upper wall structure, looking E, (image no. B99 0078)**





**Figure 8.51 Detail of former window aperture on E wall, as revealed by wall framing, (image no. B99 0113)**

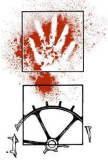


**Figure 8.52 Detail of by-hand writing in paint on metal framing (image no. B99 0116)**



**Figure 8.53 Detail of 'I' column showing original power socket and BHP makers mark, (image no. B99 0107)**



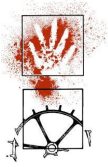


**Figure 8.54 View of W wall showing three large roller doors, looking NW, (image no. B99 0070)**



**Figure 8.55 Wide view of floor, looking SW, showing grid pattern in slab joints, (image no. B99 0073)**





**Figure 8.56 Looking S (SE corner of building) at series of rooms and offices along S wall, (image no. B99 0052)**



**Figure 8.57 Looking SW at recent two storey construction in SW corner of building. The roof structure was modified in order to make the upper building space available, (image no. B99 0059)**



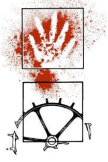


**Figure 8.58 Wide view of northern portion of building, looking NE, (image no. B99 0179)**



**Figure 8.59 Looking NW at NW corner of building showing wall cross bracing on either side of the corner and large supporting 'I' beam across top of N wall, (image no. B99 0170)**





**Figure 8.60 View of N wall showing former external doorways as revealed by missing lower wall frame elements, (image no. B99 0185)**

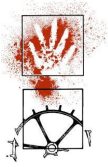


**Figure 8.61 Looking WNW at concrete floor adjacent to N wall. This formed the floor of former rooms and offices. Former walls are indicated by infilled trenches (image no. B99 0194)**



**Figure 8.62 Detail of remnant paint showing former interior two-tone green colour scheme, on column of the E wall, (image no. B99 0203)**



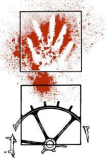


**Figure 8.63 Detail of frame jointing on N wall, (image no. B99 0188)**



**Figure 8.64 Looking up at roof structure and joining plate adjacent to box drain, note bracing strut (top right) has been removed, (image no. B99 0199)**



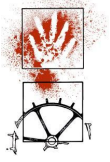


**Figure 8.65 Detail of possibly original interior floor kerbing on E wall, note modern door incision, looking NE (image no. B99 0097)**



**Figure 8.66 Detail of concrete base around a wall 'I' column showing red-brown paint underneath concrete – possibly the metal primer, or an indication of a former interior colour scheme, (image no. B99 0103)**





**Figure 8.67 Detail of roller door mechanism on W wall, looking NW, (image no. B99 0140)**



**Figure 8.68 Detail of roller door mechanism on W wall, looking SW, (image no. B99 0142)**

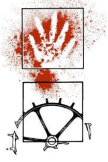


**Figure 8.69 Detail of upper left margin of (older?) roller door on E wall, looking (image no. B99 0088)**



**Figure 8.70 Detail of upper right margin of (older) roller door on E wall, (image no. B99 0094)**





**Figure 8.71 Detail of disused internal electrical board, near SW corner of building, (image no. B99 0134)**

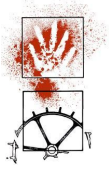


**Figure 8.72 Detail of column with welded fittings, suggesting a formerly attached gate or fence, (image no. B99 0128)**



**Figure 8.73 Detail of disused ceiling hook, one of a series aligned in a N-S direction (image no. B99 0148)**





**Figure 8.74 Detail of disused electrical conduit and Bakelite bayonet light fitting, (image no. B99 0307)**



**Figure 8.75 Detail of truss join at base of clerestory window, also showing old electricity conduit and disused remnant ceiling hook, one of a series running E-W across the building, (image no. B99 0303)**



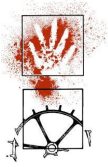


**Figure 8.76 Detail of joining plates at base of clerestory window, (image no. B99 0151)**

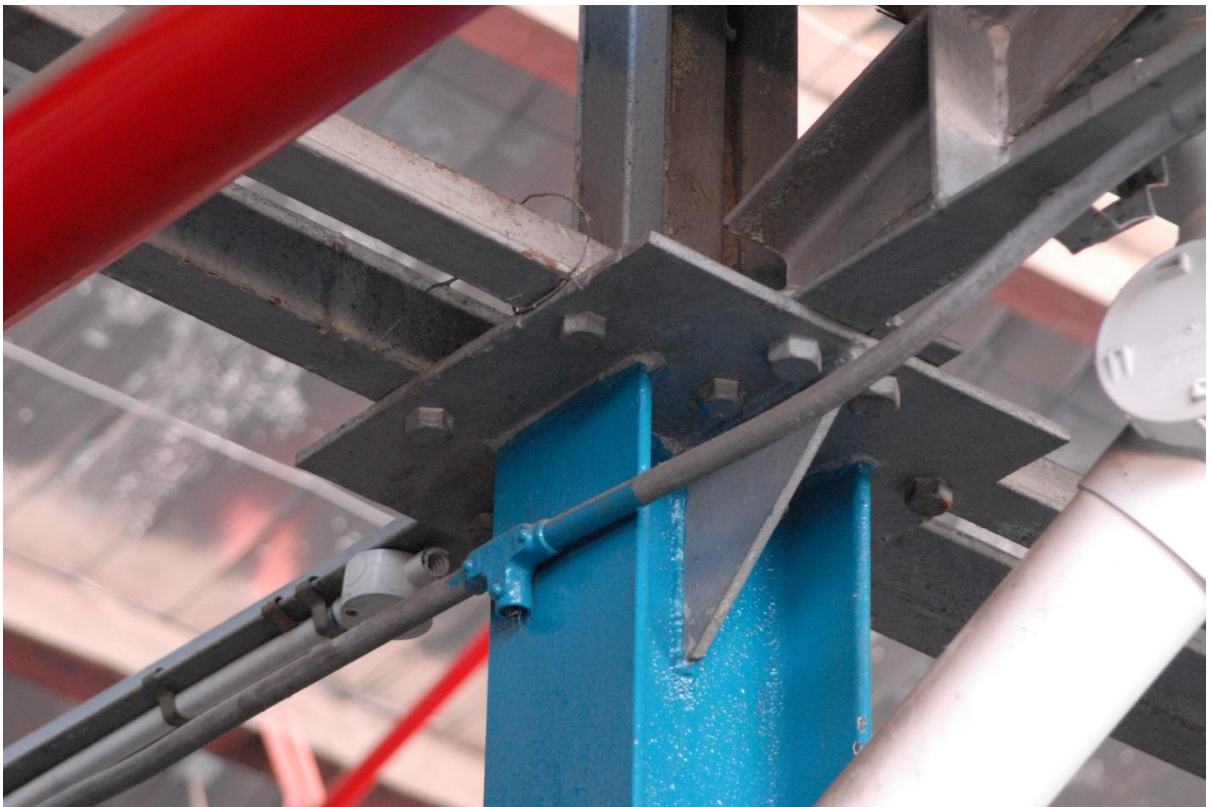


**Figure 8.77 Detail of 6-way roof join and plate, near wall, (image no. B99 0154)**





**Figure 8.78 Detail of top of central-axis roof column, situated at the point of intersection of cross bracing, showing associated jointing, (image no. B99 0159)**



**Figure 8.79 Detail of top of column, not situated at intersection of roof bracing, (image no.B99 0164)**