

Appendix K Cultural Heritage Archival Recordings





7.5 Sample Set of Photographic Prints



Figure 7.12 General view looking NE, (image no. CUST 0003)



Figure 7.13 Looking NE at the SW corner of the building, (image no. CUST 0047)



Figure 7.14 Looking ESE at front (western end) of building, (image no. CUST 0048)



Figure 7.15 The western face of the building, looking SE, (image no. CUST 0051)



Figure 7.16 Looking SE at the NW corner of the building, (image no. CUST 0054)

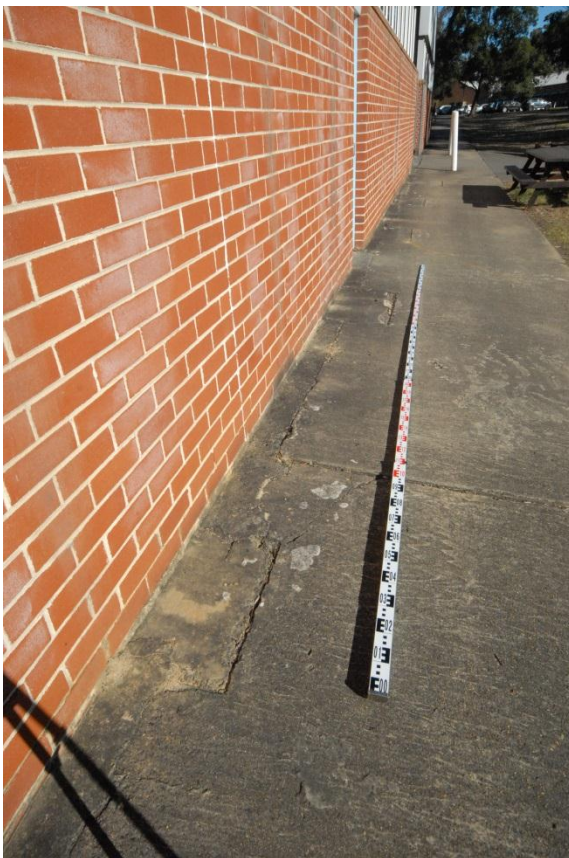


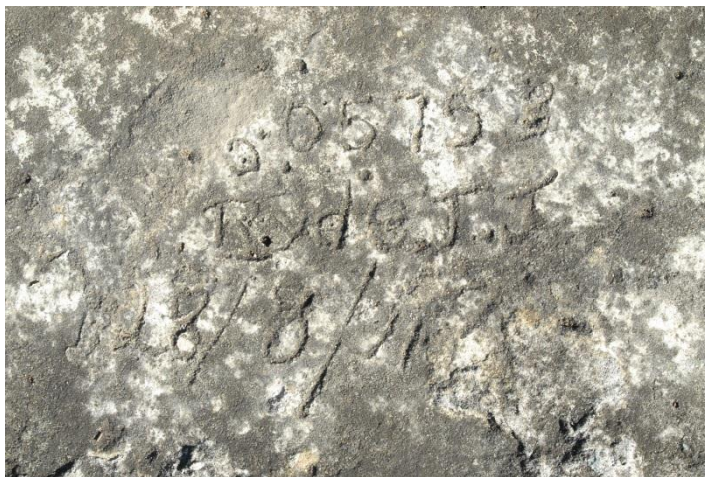
Figure 7.17 Looking SSW along western face of building, showing concrete footings for interior columns supporting the brick wall, (image no. CUST 0018)



Figure 7.18 Looking S across northern side of building, along a truss alignment, showing edge drain and original concrete footing for truss, refer figure 7.19 for detail of this footing (image no. CUST 0019)



Figure 7.19 Exterior section of an original truss concrete footing, with a by-hand inscription (it is unclear if the inscription is contemporaneous with the footing construction, or has been applied subsequently), (image no. CUST 0020)



05 75 3
Ryde J.J
 £8/8/II

Figure 7.20 Photo detail of inscription (left), and interpretation (right) (image no. CUST 0023)



Figure 7.21 Looking WNW alongside-drain situated parallel to southern side of building, (image no. CUST 0058)



Figure 7.22 Looking ESE alongside-drain situated parallel to southern side of building, (image no. CUST 0060)



Figure 7.23 Looking WNW alongside-drain situated parallel to northern side of building, (image no. CUST 0027)



Figure 7.24 Looking ESE alongside-drain situated parallel to northern side of building, (image no. CUST 0015)



Figure 7.25 The NE corner of the building, looking W, (image no. CUST 0029)



Figure 7.26 The eastern end of the building, looking WNW, (image no. CUST 0033)

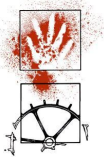


Figure 7.27 Looking NW across the southern drain and building edge, showing top of original truss concrete footings surrounded by a later slab, (image no. CUST 0041)



Figure 7.28 Looking NNE across southern portion of southern side of building, (image no. CUST 0043)



Figure 7.29 Looking ESE midway along Southern side of building, showing raised edge of original truss concrete footing, (image no. CUST 0066)



Figure 7.30 Detail of concrete footing showing abutting remnant block forming part of the drain wall, (image no. CUST 0067)



Figure 7.31 Context of inscription near SW corner of building, looking E, (image no. CUST 0192)



Figure 7.32 Inscription near SW corner of building, located on concrete infill between the original truss footings. The inscription is contemporaneous with the infill installation. Interpretation at right. (image no. CUST 0194)

102
CONST



Figure 7.33 General view of interior, looking SE from western roller door, (image no. CUST 0074)



Figure 7.34 Interior of western infill wall, showing vertical supports, (image no. CUST 0076)



Figure 7.35 Looking WNW at western end of hut, (image no. CUST 0077)



Figure 7.36 General view of interior looking ESE from western end, (image no. CUST 0080)



Figure 7.37 View of thick concrete slab floor along central axis of hut, looking ESE, (image no. CUST 0081)



Figure 7.38 Detail of concrete floor showing central axis slabs (foreground) abutting apparently thinner (and later?) side slabs, Note also infilled trench (parallel to scale) which suggests a former internal wall present at the time of the side slab installation, looking SE. (image no. CUST 0121)



Figure 7.39 View along roof trusses, showing cross-bracing, looking SSW, (image no. CUST 0097)

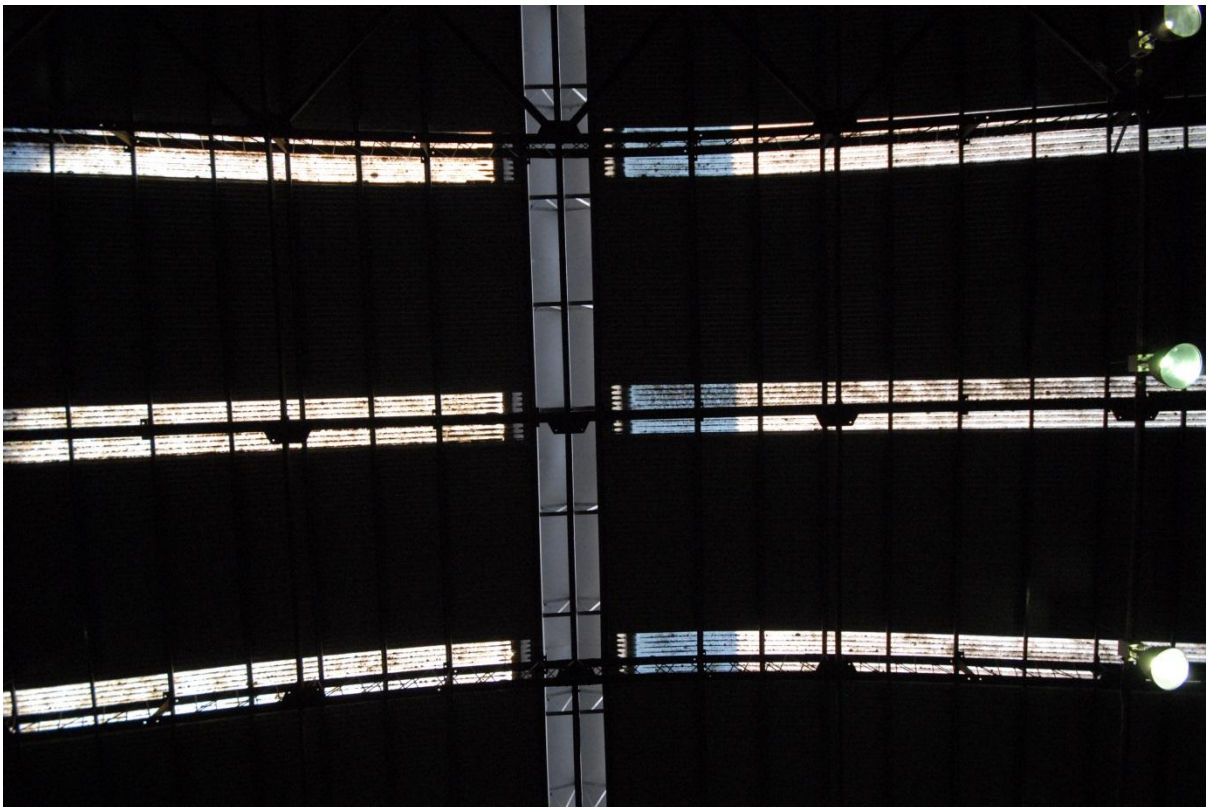


Figure 7.40 Interior view of top of roof, looking directly up at ridge ventilator, (image no. CUST 0079)



Figure 7.41 View looking along truss alignment at northern half of building, (image no. CUST 0089)



Figure 7.42 View of cross-braced trusses, and roof structure at eastern end of building (image no. CUST 0111)



Figure 7.43 View looking SSW at southern half of eastern end wall and adjoining roof, (image no. CUST 0110)



Figure 7.44 Detail of truss construction, note edge reinforcing, looking S, (image no. CUST 0167)



Figure 7.45 Interior detail of highest point of truss arch, showing ridge ventilator, (image no. CUST 0140)



Figure 7.46 The junction of a truss with the concrete floor. The top of the original footing can be seen to the right of the truss. The truss is probably bolted to an angled face on the footing. Looking SE (image no. CUST 0180)



Figure 7.47 Roof light, (image no. CUST 0147)



Figure 7.48 Truss joint and fixing plate, bracing timbers on outside, (image no. CUST 0149)



Figure 7.49 Truss joint and fixing plate, bracing timbers on inside, (image no. CUST 0151)



Figure 7.50 Detail of truss low down on arch, showing edge reinforcing, (image no. CUST 0157)



Figure 7.51 Detail of roof purlins and attachment to truss, (image no. CUST 0160)



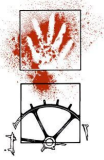
Figure 7.52 View of western roller door entrance, showing (now infilled) cut trench across original central access concrete floor, looking SW, (image no. CUST 0184)



Figure 7.53 Detail of lower section of truss, showing recent reinforcing of edges with the welded attachment of 'L' profile steel, (image no. CUST 0170)



Figure 7.54 Detail of lower section of reinforced truss with connection plate, (image no. CUST 0172)



8. B99 BUILDING

8.1 Description

Location

The B99 building is situated parallel to and 35 m east of Moorebank Avenue, 100 m south of its intersection with Anzac Road, Moorebank.

Map grid references (MGA datum):

NE corner	308114.6242021
NW corner	308084.6240024
SE corner	308100.6241906
SW corner	308067.6241900

Building 99 is a large saw-toothed roofed workshop or warehouse building (2-3 storeys in height) with dimensions 114.3 x 30.48 m, (375 x 100 feet) and a maximum height of 7.1 m (c.23 feet). There are 15 roof ridges, each with a vertically mounted clerestory window facing south. Box gutters situated at the base of the windows are situated at a height of 4.2 m. The construction date of the building is not known however it is presumed to have been during World War Two, a period of significant expansion at Moorebank. The building must predate 1943 which is the earliest date of a series of photographs held by the Australian War Memorial. A number of these are presented here for context, and with contemporary equivalent views (Figures 8.2-12).

The structure consists mostly of steel frame, with some minor wooden wall frame elements. The walls and roof are now clad in Colorbond steel sheeting. Originally the walls were clad in flat sheet. The re-cladding was undertaken during the mid-1990's redevelopment of the SME.

In the 1940s this building functioned as the main workshop of the Land Headquarters Electrical and Mechanical Engineers School, including the School's Armoured Fighting Vehicle Wing. The building is currently used as a storehouse, garage compound and transport workshop.

Store houses and workshops were erected during WWII along the eastern seaboard, but were concentrated in the southeast (GB&A 2004:74). Similar structures include Hangar 76 at Amberley RAAF Base, (Queensland), which has a welded steel frame supporting a saw tooth roof characteristic of late 1930s and early 1940s utilitarian and workshop structures erected by the Commonwealth. Buildings 46-48 at RAAF Base Fairbairn, ACT are also saw tooth roofed hangars with steel framed central spaces and roof trusses in the prevailing Inter War Art Deco and Functionalist style employed by the Commonwealth.

The B99 building is now the only remaining *in situ* structure built on the Project site during the World War Two period.

The Transport Compound Workshop contributes to the historical significance of The Moorebank Cultural Landscape, however it is not of itself historically important. The workshop structure is not an unusual, rare or endangered building type. Similar structures exist across Australia and similar buildings are listed on the CHL at Amberley RAAF Base Group, Archerfield Airport Heritage Precinct, RAAF Base Fairbairn Group, RAAF Base Richmond and the former Salisbury Explosives Factory. Nevertheless, B99 is locally rare, within the context of the Moorebank Cultural Landscape.



Scale 1:8157 200m

Base image: 2008 from www.six.nsw.gov.au



Scale 1:8157 200m

Base image: 1945 aerial photograph from www.six.nsw.gov.au

Figure 8.1 Comparison of 1945 and 2008 aerial photography of the B99 building (longest building lower right quadrant) and its context. Note that nearly all buildings to the N, W and S of B99 have now been demolished, including the saw-toothed warehouse on the opposite side of Moorebank Avenue.



AUSTRALIAN WAR MEMORIAL

082356

Figure 8.2 Looking SE at the western wall of B99 from near its NW end in 1944. Note presence of overlapping sliding doors. (Australian War Memorial 082356, original caption: Moorebank, NSW. 1944-10-25. Tanks and armoured cars on the apron outside the main workshop at the armoured fighting vehicle wing, land headquarters electrical and mechanical engineers school).



Figure 8.3 Contemporary photo replicating the view and angle of the 1944 photo above (image no. B99 0331)



AUSTRALIAN WAR MEMORIAL

082356

Figure 8.4 Looking SE at the western wall of B99 from near its NW end in 1944. Note presence of overlapping sliding doors. (Australian War Memorial 082356, original caption: Moorebank, NSW. 1944-10-25. Tanks and armoured cars on the apron outside the main workshop at the armoured fighting vehicle wing, land headquarters electrical and mechanical engineers school).



Figure 8.5 Contemporary photo taken from a position close to the 1944 photo, to provide an equivalent comparative view (and avoid modern obstacles). Note the loss of some door apertures and the replacement of sliding with roller doors. Also note the replacement of flat iron with corrugated cladding, and the addition of exterior side lighting (image no. B99 0315).



AUSTRALIAN WAR MEMORIAL

082352

Figure 8.6 Looking SW towards the NE corner of B99 in 1944, from a former road entrance off Moorebank Avenue. Note doorways on N building face, indicating interior offices or rooms at this end of the building (Australian War Memorial 082352, original caption: Moorebank, NSW. 1944-10-25. The entrance to B group, land headquarters electrical and mechanical engineers school).



Figure 8.7 Contemporary photo replicating the view and angle of the 1944 photo above (image no. B99 0329).



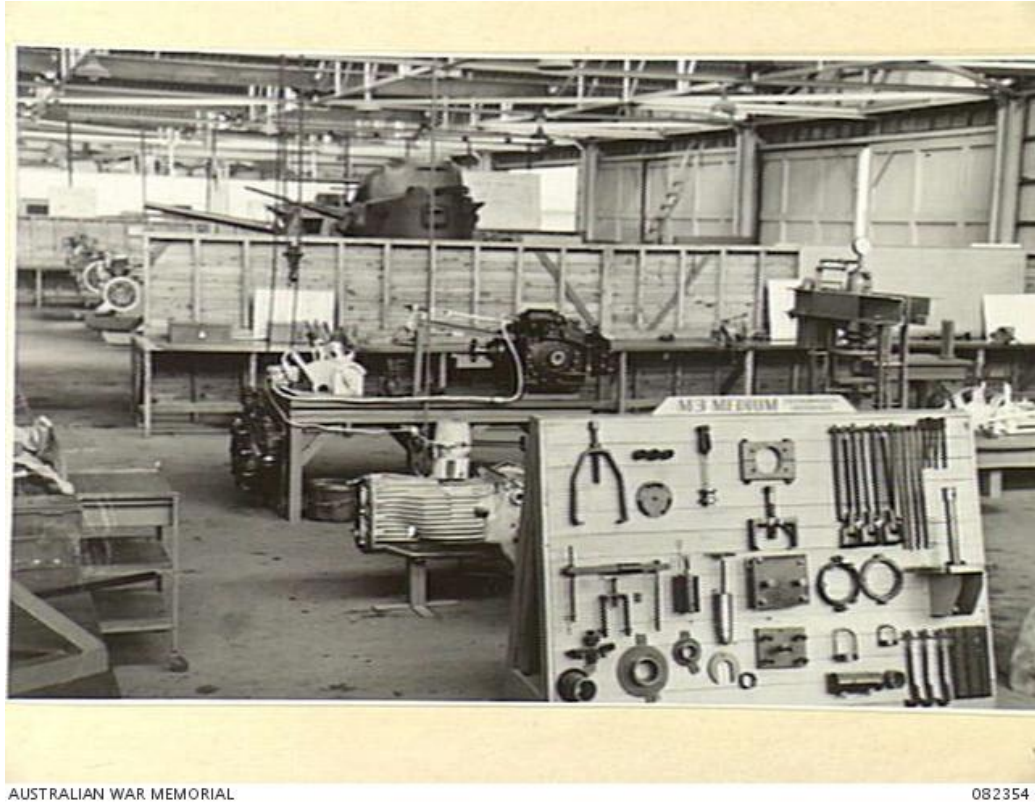
AUSTRALIAN WAR MEMORIAL

082355

Figure 8.8 1944 interior photo. Note two tone colour scheme and sliding door configuration.
(Australian War Memorial 082355, original caption: Moorebank, NSW. 1944-10-25. The radial engine section, armoured fighting vehicle wing, land headquarters electrical and mechanical engineers school. Identified personnel are:- Warrant Officer II, F.D. Scott (1); WO I, E.A. Craig (2); WO II, D.K. Macquarie (3); Sergeant H.F. Gibson (4); Staff Sergeant D. Whymark (5); WO II, C. Tompkins (6); Staff Sergeant H.S. Cooke (7).



Figure 8.9 Contemporary photo showing remnant of colour scheme preserved on an original wall frame column, which appears to be the same as that shown in the above 1944 photo (image no. B99 0204)



AUSTRALIAN WAR MEMORIAL

082354

Figure 8.10 Interior view looking SNE at the western wall of B99 in 1944. Note presence of overlapping sliding doors and unchanged roof structure. (Australian War Memorial 082354, original caption: Moorebank, NSW. 1944-10-25. The transmission section, armoured fighting vehicle wing, land headquarters electrical and mechanical engineer school).



Figure 8.11 Contemporary photo replicating the view and angle of the 1944 photo above. Note the removal of former door apertures with the insertion of modern wall framing (image no. B99 0314)



AUSTRALIAN WAR MEMORIAL

086828

Figure 8.12 Interior 1944 view looking either N or S from the mid long axis of the building. Note original lighting and unchanged roof structure (Australian War Memorial 086828, original caption: Moorebank, NSW. 1945-02-22. Personnel at 8 advanced workshop, corps of Australian electrical and mechanical engineers, refitting valves during the engine reconditioning process. Identified personnel are:- Sergeant H T Lang, (1); Staff Sergeant P W Drover, (2); Corporal M Y Benbow, (3); Warrant Officer 1 C M Davies, (4); Craftsman J Watson, (5)).

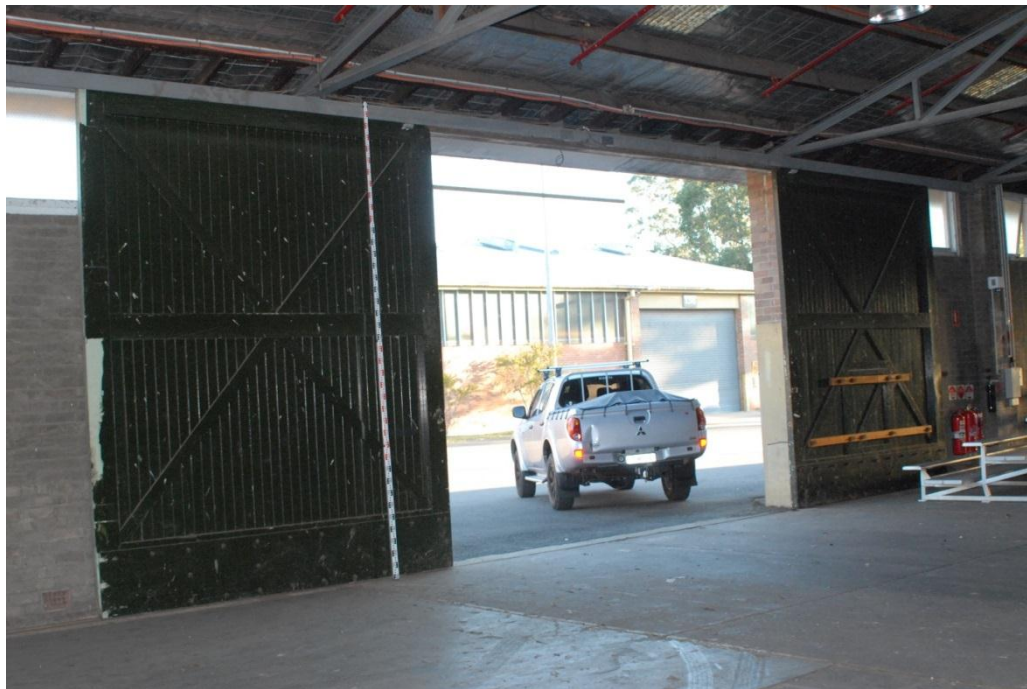


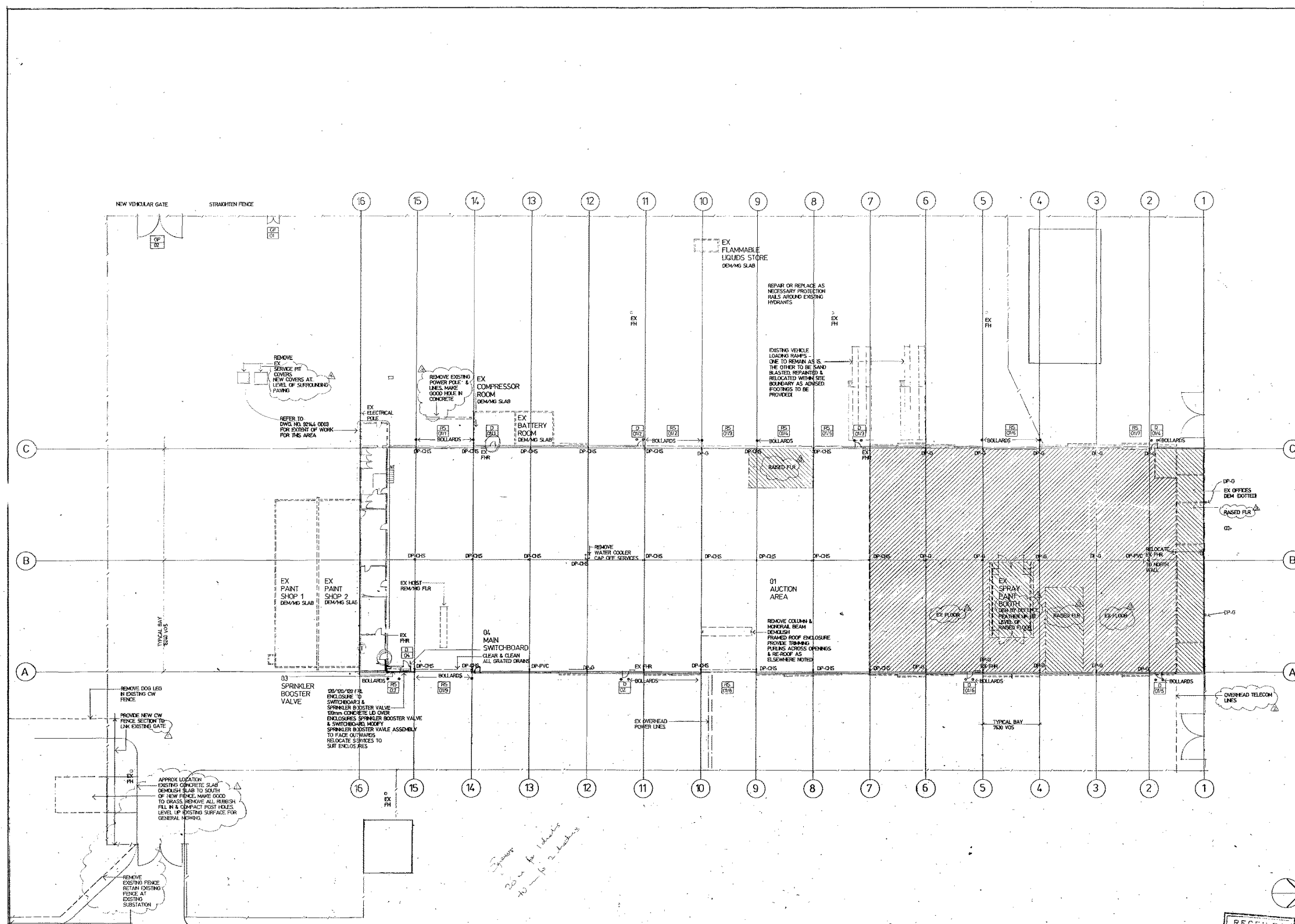
Figure 8.13 Example of wooden sliding doors of similar type to those originally fitted to the B99 building, inspected on S side of warehouse B159 in Holsworthy Barracks, one of two storehouses just off Moorebank Ave, near Pass Office.



Figure 8.14 Example of wooden sliding doors of similar type to those originally fitted to the B99 building, inspected on S side of warehouse B159 in Holsworthy Barracks, one of two storehouses just off Moorebank Ave, near Pass Office.



Figure 8.15 Detail of sliding door track inspected on S side of warehouse B159 in Holsworthy Barracks, one of two storehouses just off Moorebank Ave, near Pass Office.



Issue
ABC DEFGHIJKLMNOPQRSTUVWXYZ

RECEIVED
18 FEB 1993
Ans'd.....

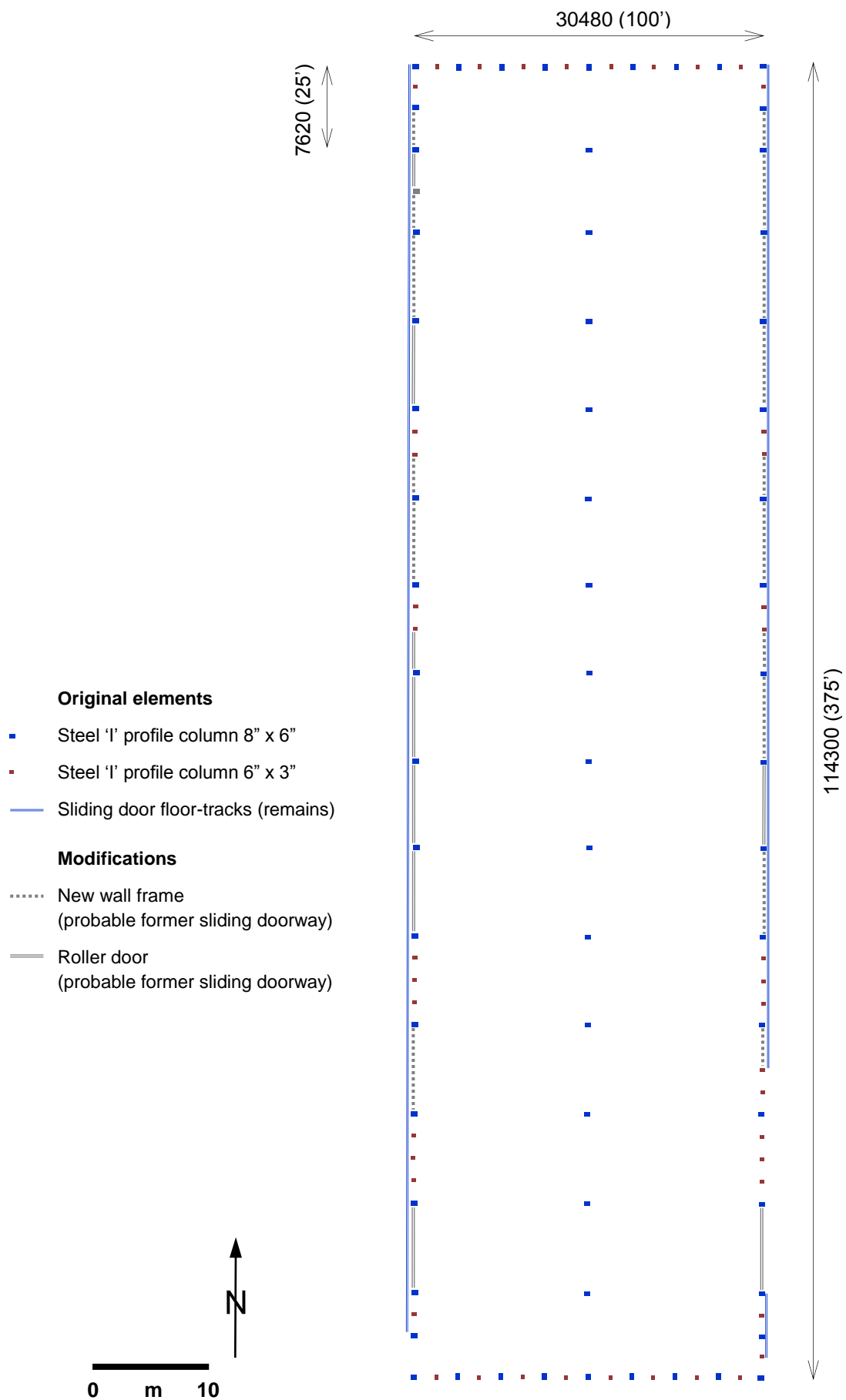


Figure 8.17 Plan of B99 walls and vertical elements

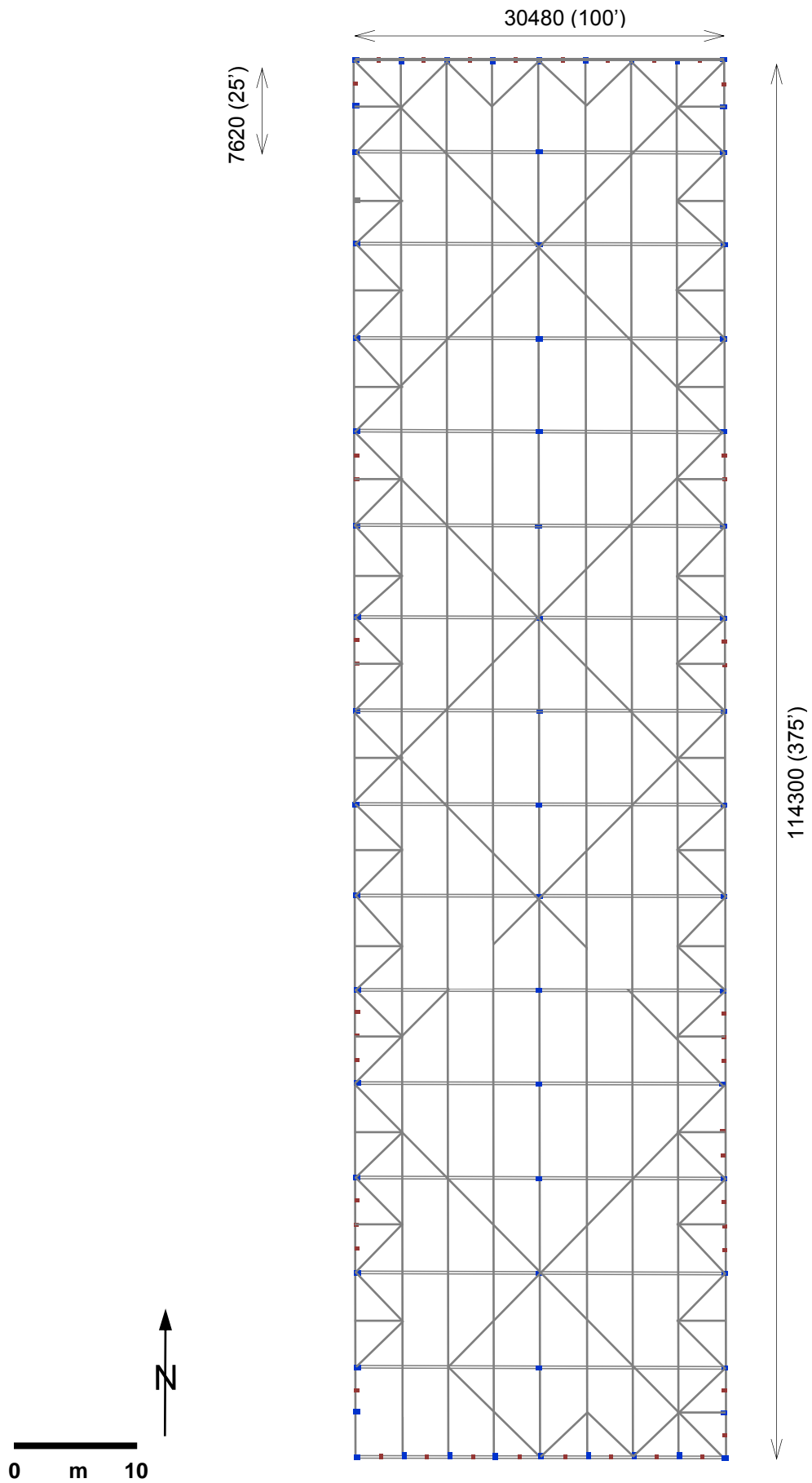
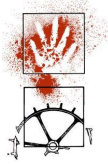


Figure 8.18 Plan of B99 roof structural elements