

# ATLAS-CAMPASPE

## Mineral Sands Project

ENVIRONMENTAL IMPACT STATEMENT



### ATTACHMENT 4 › COMMUNITY INFORMATION



---

Atlas-Campaspe  
**MINERAL SANDS PROJECT**  
COMMUNITY INFORMATION  
SEPTEMBER 2012

---



## COMMUNITY INFORMATION SESSIONS

Kilfera Field Day › Wednesday 26th September  
Balranald › Wednesday 10th October  
See overleaf for more details



## ABOUT BEMAX

In August 2011, Bemax Resources Limited (Bemax) commenced the formal Government process required to gain the approvals necessary to develop a new mineral sands mine in western NSW. The mine, known as the Atlas-Campaspe Mineral Sands Project (the Project), would have a life of approximately 20 years (commencing approximately 1 July 2013 or upon the grant of all required approvals). The establishment and operation of the Project would continue to stimulate demand in the local and regional economy leading to increased business turnover in a range of sectors and increased employment opportunities.

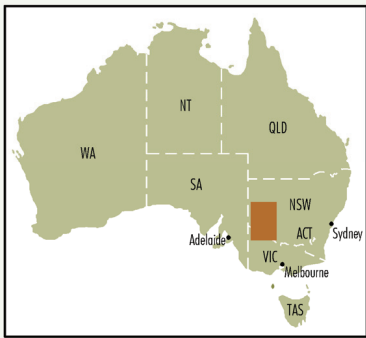
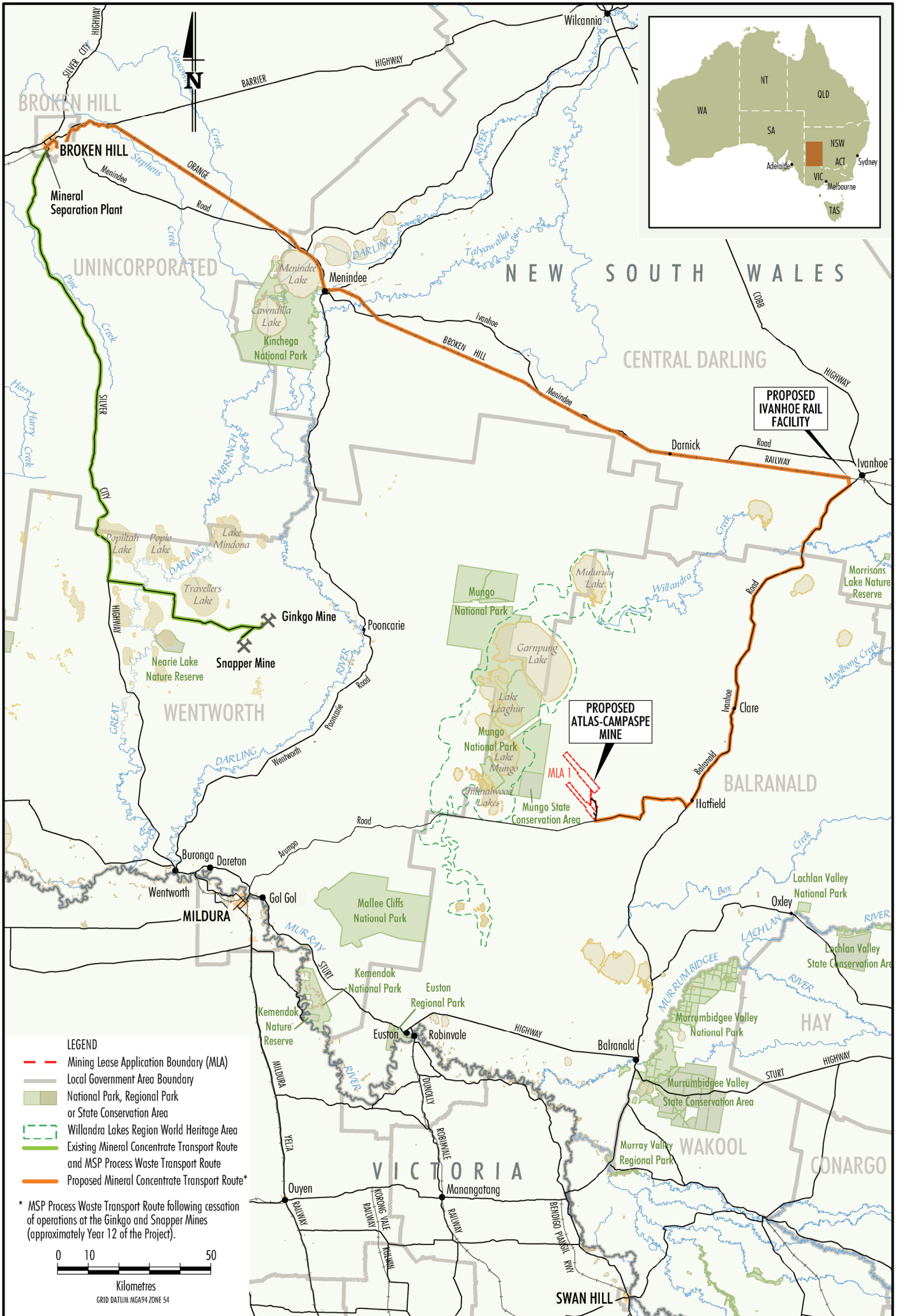
Bemax is currently undertaking community consultation as part of the approvals process for the Project. This newsletter provides information on the key facts of the Project and approvals process as well as details of the upcoming community information sessions.

Bemax currently operates the Broken Hill Mineral Separation Plant (MSP), Snapper Mine and Ginkgo Mine in western NSW (see map).

In late 2004 and early 2005, Bemax commenced construction of the Ginkgo Mine and the MSP. Heavy mineral concentrate production at the Ginkgo Mine commenced in December 2005 and commissioning of the MSP occurred in February 2006. Construction and development of the Snapper Mine deposit began in August 2008. The company's existing operations in western NSW provide significant economic stimulus to the western NSW economy through direct and indirect means.

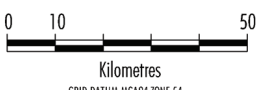
Bemax strives to support local communities in the vicinity of its operations including financial support through sponsorships, support programs, employment and the indirect economic growth and benefits that flow from significant company expenditure within these communities. Bemax is also a regular contributor to schools, sporting groups, festivals, service organisations and the indigenous community.





- LEGEND**
- Mining Lease Application Boundary (MLA)
  - Local Government Area Boundary
  - National Park, Regional Park or State Conservation Area
  - Willandra Lakes Region World Heritage Area
  - Existing Mineral Concentrate Transport Route and MSP Process Waste Transport Route
  - Proposed Mineral Concentrate Transport Route\*

\* MSP Process Waste Transport Route following cessation of operations at the Ginkgo and Snapper Mines (approximately Year 12 of the Project).



## OVERVIEW OF THE PROPOSED ATLAS-CAMPASPE MINERAL SANDS PROJECT

The Project would involve two main development components (see map):

1. Construction and development of infrastructure for mining operations at the Atlas and Campaspe deposits (the proposed Atlas-Campaspe Mine), located approximately 80km north of Balranald.
2. Construction and operation of the Ivanhoe Rail Facility, located approximately 2.5 km south-west of Ivanhoe.

Conventional (non-dredge) mining methods would be utilised at the Atlas-Campaspe Mine, both for overburden removal and for ore extraction. Overburden/process wastes would be progressively backfilled in mine voids behind the advancing ore extraction areas or placed in off-path overburden emplacements/sand residue dams. The ore would be processed at on-site mineral processing facilities (i.e. primary gravity concentration and heavy mineral concentrate treatment) to produce mineral concentrates.

Mineral concentrates from the proposed Atlas-Campaspe Mine would be transported by road to the proposed Ivanhoe Rail Facility for unloading, stockpiling and subsequent loading to trains for rail transportation to the MSP.

An average construction workforce of approximately 150 people with a short-term peak construction workforce of up to 300 people would be required for Project construction. At full development, an operational workforce of approximately 200 people including a mixture of direct Bemax employees and contractors would be required.

## ENVIRONMENTAL IMPACT STATEMENT

An Environmental Impact Statement (EIS) is being prepared by recognised experts to determine the environmental, social and economic effects of the Project.

The EIS will include the following studies:

- Flora Assessment.
- Fauna Assessment.
- Road Transport Assessment.
- Cultural Heritage Assessment.
- Hydrogeological and Water Supply Assessment.
- Surface Water Assessment.
- Agricultural Impact Statement.
- Socio-Economic Assessment.
- Noise Assessment.
- Air Quality and Greenhouse Gas Assessment.
- Mineral Concentrate and Process Waste Materials Assessment.
- Land Contamination Assessment.
- Preliminary Hazard Analysis.
- Environmental Risk Assessment.

## APPROVALS PROCESS

Approval for the Project will be sought under Division 4.1 of Part 4 of the NSW *Environmental Planning and Assessment Act, 1979* as the Project is classified as State Significant Development under Schedule 1 of *State Environmental Planning Policy (State and Regional Development) 2011*.



### State Significant Development Assessment Typical Steps

Once complete, the EIS will be lodged with the NSW Department of Planning and Infrastructure (DP&I) for assessment. After the EIS has been accepted by the DP&I, it will be placed on exhibition for public review and submissions. The EIS will be on public exhibition for a minimum of 30 days and this is anticipated to occur in the first quarter of 2013.



Photos: Kelly Smyth

## COMMUNITY INFORMATION SESSIONS

---

As part of Bemax's ongoing commitment to community consultation, Community Information Sessions will be open to the public on the 26th September (Kilfera Field Day) and the 10th October (Balranald).

Members of the local community will have the opportunity to raise questions and receive Project information directly from Bemax representatives.

## KEY INFORMATION / DATES

---

### Location

› **Kilfera Field Day, Kilfera Station**  
via Ivanhoe

### When

› Wednesday 26th September 2012,  
10am - 4pm

### Location

› **Balranald Senior Citizens Centre**  
Market Street, Balranald

### When

› Wednesday 10th October 2012,  
3pm - 7pm

For more information, please contact **Ray Roberts** (see contact details below).

## COMMUNITY ENQUIRIES

---

For any questions regarding the Atlas-Campaspe Mineral Sands Project, please call **Ray Roberts, Geology and Exploration Manager**, on

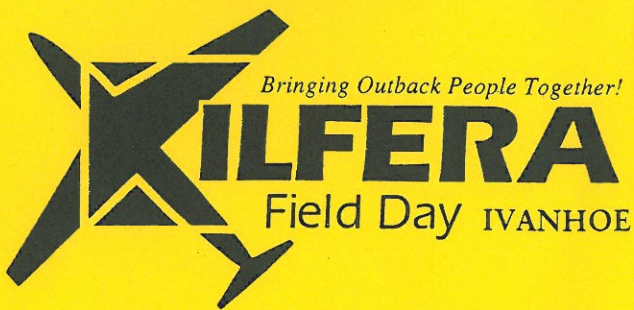
**(03) 5025 7575** or email

**RRoberts@bemax.com.au**

For more information on Bemax, please visit:

**www.bemax.com.au**





“Kilfera”  
Ivanhoe  
NSW  
2878

**23rd ANNUAL “KILFERA” FIELD DAY**

**WEDNESDAY 26<sup>TH</sup> SEPTEMBER, 2012**

**IVANHOE. NSW**

Dear *The Management + Staff*

Having had great success for many years raising money for the Royal Flying Doctor Service and the Ivanhoe Hospital, we again invite you to join us as an exhibitor or a visitor on Wednesday 26<sup>th</sup> September, 2012.

With the presentation and demonstrations of the supplier’s products, the field day will still follow the same lines as the previous years. The auction in favour of the Royal Flying Doctor at the Ivanhoe Hospital will be conducted at the end of the day with all suppliers asked to donate an item from their product range.

Full catering facilities and refreshments will be available on the day.

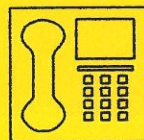
RSVP: 21<sup>st</sup> September, 2012.

We look forward to again catching up with you on the day.

Regards,

*Fay Linnett*

Clive, Fay & Peter Linnett



**PHONE**

**CLIVE & FAY: 0269 951315**

**PETER: 0269 951442**

**FAX: 0269 951224**

**MOBILE: 0428 951315**

**EMAIL: Kilfera1@bigpond.com**



# You are invited to attend ...



The NSW Farmers

## PUBLIC MEETING

Presentation by BEMAX

to be held at the

Balranald Ex - Servicemen's Memorial Club Dining Room

**Friday, 15th June 2012**

commencing at 2.30pm (afternoon tea provided)

BEMAX will discuss the upcoming potential mineral sands project at  
Atlas - Campaspe approximately 100km north of Balranald

**Find out first hand .....**

- Who BEMAX are, and what we intend to mine
  - Details of the proposed mine
- Current schedules and required approvals
- Potential benefits to the local community
  - Q & A time

**Meet several BEMAX personnel including:**

Ray Roberts: Resource Development Manager

David Arthur: HR Manager

Sharon Hutton: HR Assistant

Michael Priest: Mine Environmental Manager

and a representative from the mine purchasing group

This meeting will provide an opportunity for the community to get an update and better understanding of the proposed project

