

**BULGA
OPEN CUT**

GLENCORE

SSD 4960 modification application to extent the period allowed for the construction of the outer face of the noise and visual bund.

Attachments:

Attachment 1- Noise and Visual Bund rehabilitation to date overview

Attachment 2- November 2017 Community BBQ presentation

Attachment 3- November 2017 Hunter Valley Protection Alliance consultation.

Attachment 4- January 2018 Bulga Coal letter to the community and face to face consultation summary.

Attachment 5- April 2018 Community BBQ presentation

Attachment 6- April 2018 Community newsletter and flyer

Attachment 7- Bulga Coal May 2018 CCC meeting draft minutes

GLENCORE

Attachment 1- Noise and Visual Bund rehabilitation to date overview

GLENCORE

Noise and Visual Bund Rehabilitation Overview

Bulga Coal is re-establishing the Central Hunter Grey Box – Ironbark Woodland and Central Hunter Ironbark – Spotted Gum – Grey Box Forest EEC's within rehabilitation areas (as per Condition 53 of SSD-4960). This is being achieved through a high focus on ground preparation as well as seeding of the correct species to give the community the best chance of establishing.

To date, this has been very successful with an excellent density and diversity of both canopy and mid-storey species present in all rehabilitation areas. Diversity of native ground cover species has also shown considerable improvement in recent years due to an improved seeding list and also the direct emplacement of fresh forest topsoil. Whilst the individual monitoring sites do not currently meet the required benchmarks, Bulga Coal is confident that the groundcover diversity will continue to increase over time due to both our care and maintenance activities and the continuing development of the ecosystems.

The tables below present some of the ecological monitoring results recorded at various points along the Noise and Visual Bund in the last two years.

Table 1 – Germination Success of Seed Mix and Natural Recruitment

Monitoring Site	Species in seed mix identified in rehabilitation	Natural recruitment species identified in rehabilitation not include in seed mix.	Total Native Species Recorded
NVB1	10	12	22
NVB2	10	10	20
NVB3	12	12	24
OTD1	10	7	17

GLENCORE

Table 2 – Native Species recorded in Noise and Visual Bund Rehabilitation

Scientific Name	Common Name	Stratum
<i>Corymbia maculata</i>	Spotted gum	Tree
<i>Eucalyptus blakelyi</i>	Blakely's Red Gum	Tree
<i>Eucalyptus crebra</i>	Narrow-leaved ironbark	Tree
<i>Eucalyptus molucanna</i>	Grey box	Tree
<i>Eucalyptus tereticornis</i>	Forest red gum	Tree
<i>Olearia elliptica subsp. Elliptica</i>	Sticky daisy bush	Shrub
<i>Enchylaena tomentosa</i>	Ruby saltbush	Shrub
<i>Acacia amblygona</i>	Fan wattle	Shrub
<i>Acacia binervia</i>	Coast myall	Shrub
<i>Acacia decora</i>	Western silver wattle	Shrub
<i>Acacia decurrens</i>	Black wattle	Shrub
<i>Acacia falcata</i>	Sickle wattle	Shrub
<i>Acacia implexa</i>	Hickory wattle	Shrub
<i>Acacia irrorata</i>	Green wattle	Shrub
<i>Acacia salicina</i>	Cooba wattle	Shrub
<i>Daviesia ulicifolia</i>	Gorse bitter pea	Shrub
<i>Dodonaea viscosa</i>	Sticky hop bush	Shrub
<i>Atriplex semibaccata</i>	Creeping saltbush	Groundcover
<i>Einadia hastate</i>	Berry saltbush	Groundcover
<i>Einadia nutans</i>	Climbing saltbush	Groundcover
<i>Einadia trigonos</i>	Fishweed	Groundcover
<i>Dichondra repens</i>	Kidney weed	Groundcover
<i>Cyperus gracilis</i>	Slender sedge	Groundcover
<i>Euphorbia drummondii</i>	Caustic weed	Groundcover
<i>Glycine tabacina</i>	Love creeper	Groundcover
<i>Geranium solanderi</i>	Native geranium	Groundcover
<i>Pelargonium austral</i>	Native storksbill	Groundcover
<i>Oxalis perennans</i>		Groundcover
<i>Aristida personata</i>	Purple wire grass	Groundcover
<i>Bothriochloa decipiens</i>	Red grass	Groundcover
<i>Calotis lappulacea</i>	Bur daisy	Groundcover
<i>Chloris divaricate</i>	Slender chloris	Groundcover
<i>Chloris ventricose</i>	Plump windmill grass	Groundcover
<i>Chloris truncata</i>	Windmill grass	Groundcover
<i>Cymbopogon refractus</i>	Barbed-wire grass	Groundcover
<i>Cynodon dactylon</i>	Couch grass	Groundcover
<i>Dicanthium sericeum</i>	Queensland bluegrass	Groundcover
<i>Eragrostis sp.</i>	Lovegrass	Groundcover
<i>Eriochloa pseudoacrotricha</i>	Early spring grass	Groundcover
<i>Hardenbergia violacea</i>	False sasparrilla	Groundcover
<i>Panicum effusum</i>	Hairy panic	Groundcover
<i>Panicum simile</i>	Two colour panic	Groundcover
<i>Rytidosperma sp</i>	Wallaby grass	Groundcover
<i>Sporobolus creber</i>	Slender rats tail grass	Groundcover
<i>Wahlenbergia sp.</i>		Groundcover

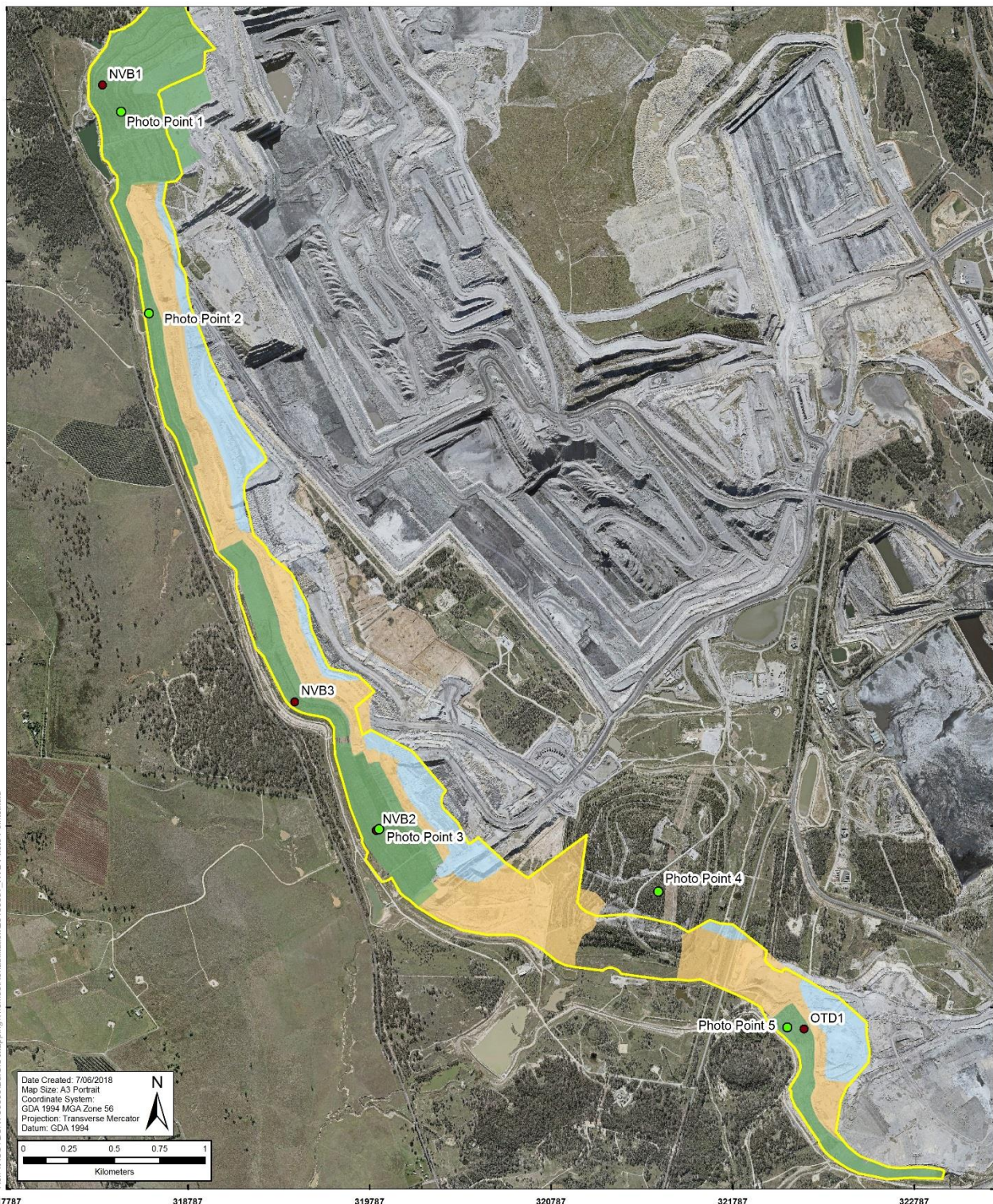
Note: shaded species are not included in the rehabilitation seed mix

The photos on the following pages show both the scale of rehabilitation completed to date on the Noise and Visual Bund, as well as the good density and diversity of native species.

Bulga Open Cut

Noise and Visual Bund Photo Points

GLENCORE



Legend

- Photo Points
- Rehabilitation Monitoring Location
- Noise and Visual Bund Outer Face Boundary
- Completed Rehab
- 2018 Rehab
- 2019 Rehab

DISCLAIMER
Subject To Survey
Glencore makes every effort to ensure the quality of the information available on this map. Before relying on the information on this map, users should carefully evaluate its accuracy, currency, completeness and relevance for their purposes, and should obtain any appropriate professional advice relevant to their particular circumstances. Glencore cannot guarantee and assumes no responsibility for the accuracy, currency or completeness of the information and by using this map you accept that Glencore has no liability for any loss or damage in any form whatsoever caused directly or indirectly from the use of this map.

DATA SOURCE
© NSW Department of Finance, Services & Innovation 2018
© NSW Resources & Geoscience (DRG) 2018
© Glencore 2018

GLENCORE

Photo Point 1 – Viking Dump (Seeded 2014)



GLENCORE

Photo Point 2 – NVB Section 4 (Seeded 2016)



GLENCORE

Photo Point 3 – NVB Section 2 (Seeded 2015)



GLENCORE

Photo Point 4 – Southern Extension Dump (Seeded 2008)



GLENCORE

Photo Point 5 – NVB Section 1 (Seeded 2016)



GLENCORE

Attachment 2- November 2017 Community Barbeque presentation

GLENCORE



Bulga Coal

Community Barbeque November 2017

Bulga Coal Community Barbeque

- Welcome
- Purpose
- Introductions
- Format
- Drink responsibly
- Music – Elisa Kate



GLENCORE



Bulga Coal

Open Cut Update

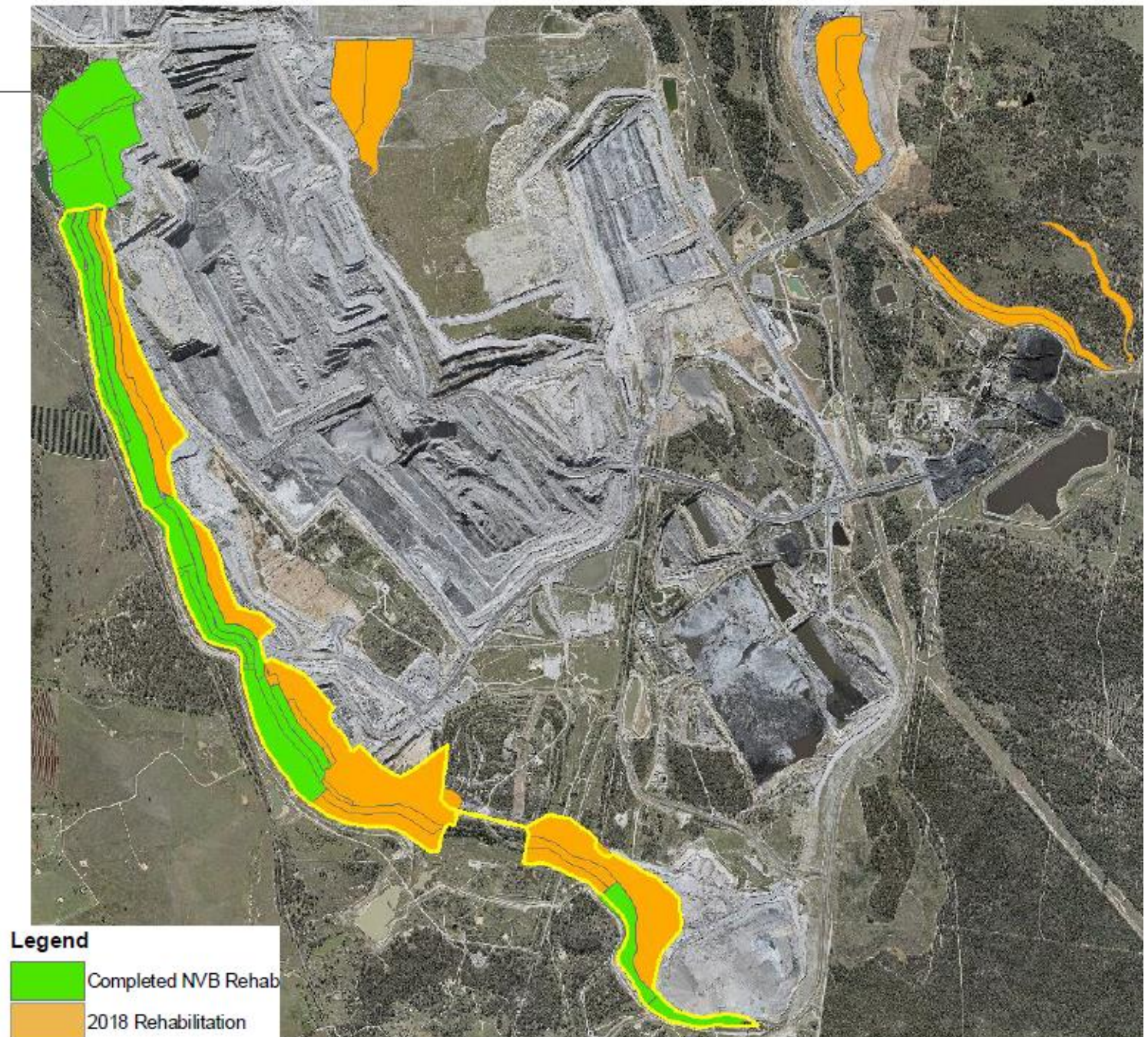
Rehabilitation

2017 Target – 86ha

2017 YTD – 91.7ha

2017 Forecast – 115ha

- 12 months left on the construction of the outer face
- Currently aiming to have outer face of Noise and Visual Bund complete in 2018 as per Project Approval requirement
- Industrial action has impacted on this
- Further consultation once clear path forward



Ecological Communities Establishing well (still early)



Charlton Rd and Noise and Visual Bund



Broke Rd and Eastern Emplacement

Area

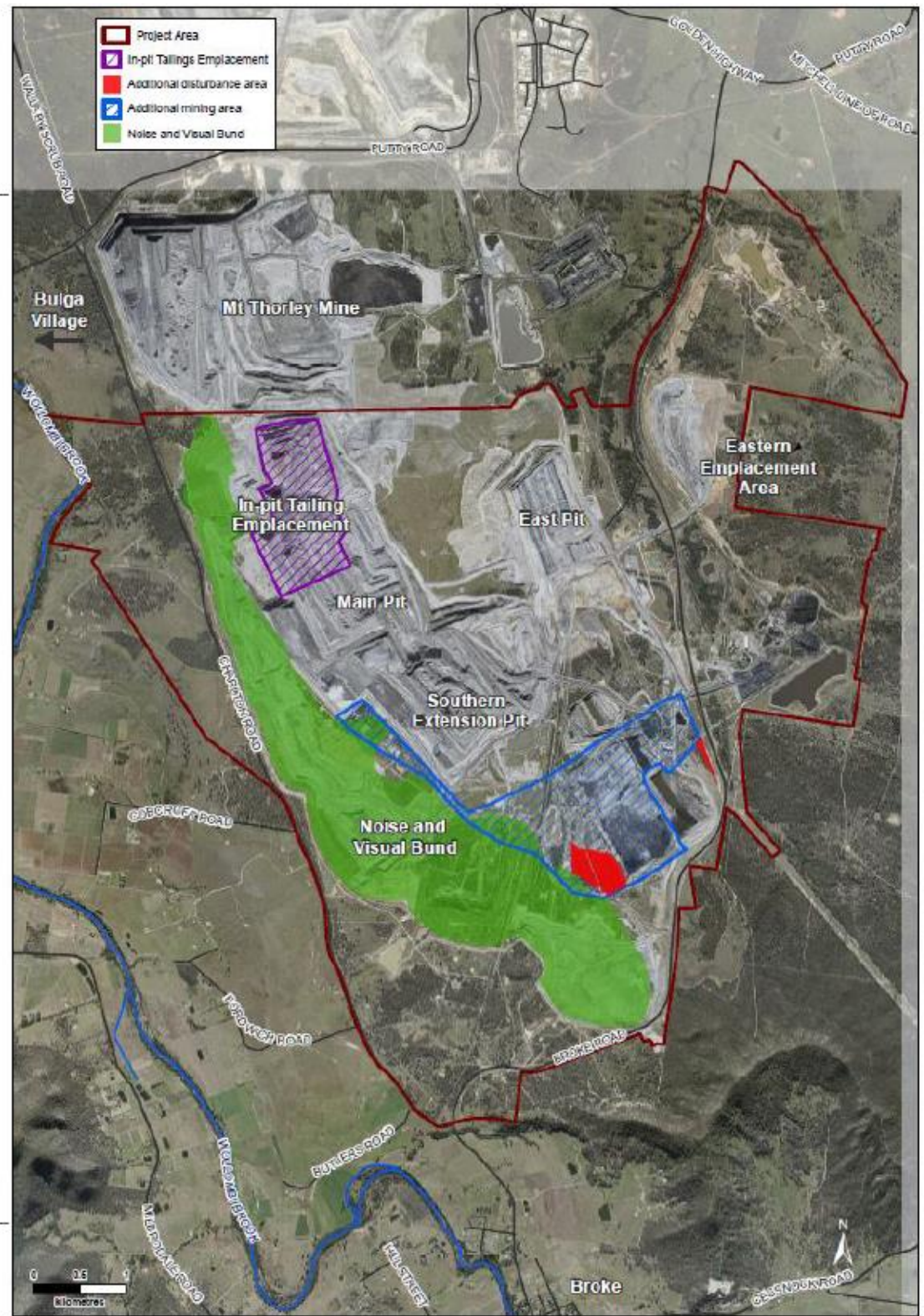


Back of Eastern Emplacement Area



Bulga Optimisation Project Modification 2

- Modification 2 is wholly behind the noise and visual bund and within the existing approved project area.
- Includes the relocation of approximately 30 millions cubic meters of tailings so that we can mine the coal beneath (old Saxonvale pit).
- Includes approximately 64 million tonnes of additional coal over the life of the mine.
- The mine life will extend another 4 years to 2039.
- The Project will disturb an additional 21Ha of endangered ecological community which will be offset.



Approach to Assessment

- The Modification assessment will be supported by a range of detailed studies, including:
 - Social Impact and Opportunities
 - Biodiversity / Offsets
 - Cultural Heritage
 - Noise
 - Air Quality
 - Water Resources (surface and groundwater)
 - Visual
 - Blasting
 - Further detailed final landform / land use planning
- Assessment will be supported by a comprehensive stakeholder engagement program including topic specific workshops if sufficient interest warrants.

Modification 2 Timing

- Specialist study Community consultation March – 2018
- Submission to Dept. Planning and Environment July – 2018
- Public exhibition September – 2018
- Assessment and approval for modification Q1 - 2020

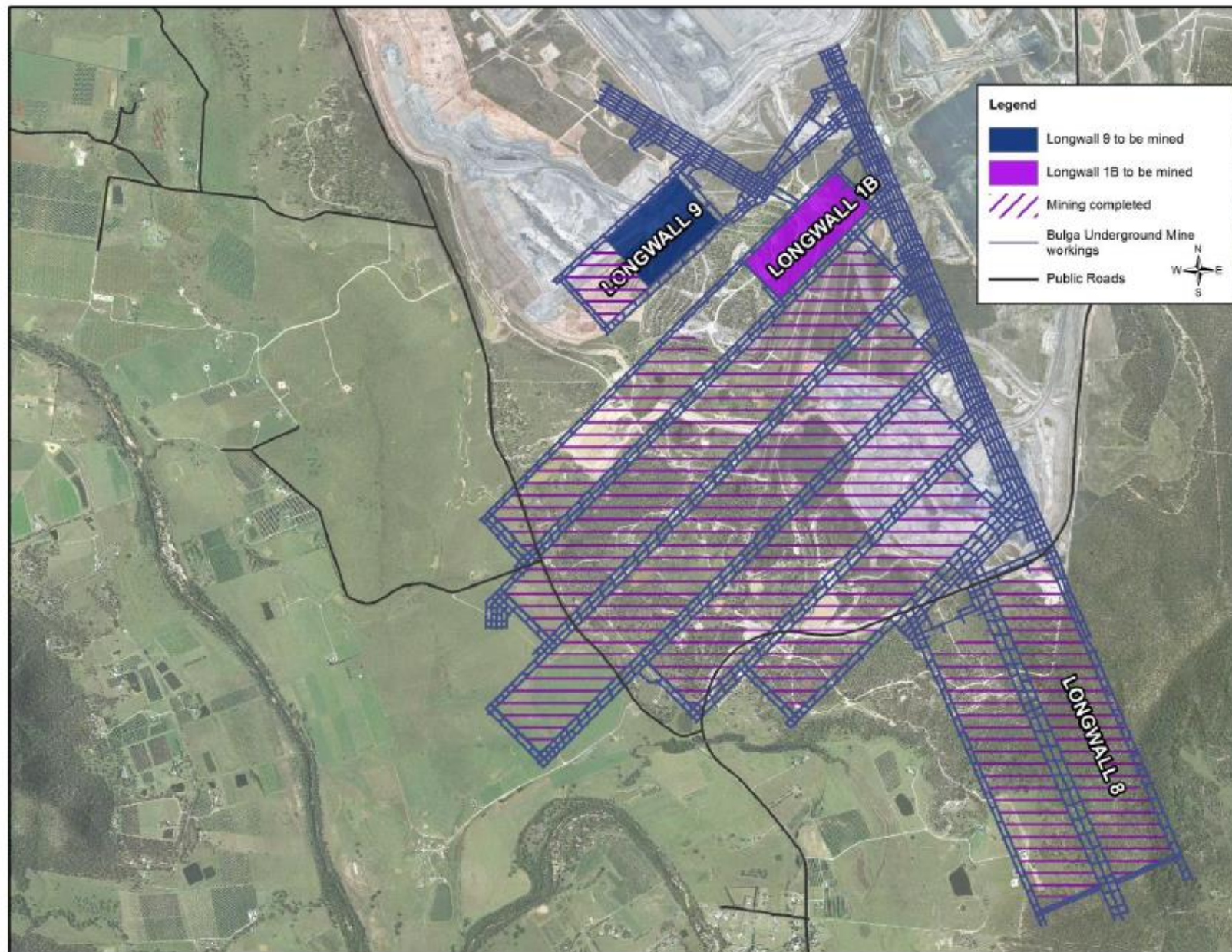
GLENCORE



Bulga Coal

Underground update

Mining to finish May 2018



GLENCORE



Bulga Coal

Community update

VPA update

- Site inspection in Broke & Bulga in August to look at project areas (McNamara Park, McTaggart Park, Bulga Rec Ground & Scout Hall)
- Consultants to scope projects from actions in village master plan
- Report to committee meeting in November
- New members Marie Mitchell and Christina Metlikovec.



McNamara Park tree planting (June)

- Tree planting at McNamara Park with Broke School gardening club kids and Broke Bulga Landcare after Cool Burn
- Planted 200 trees in an hour!



Working bee, Broke School (July)

- The school wanted more picnic tables in the lunch area
- Freshened up a dark eating area with paint, roofing and new seating
- Concreted, topped up the sandpit and rebuilt garden beds
- 7 apprentices, ECH Maintenance and the E&C Department pitched in provided labour
- Glencore, P&C purchased new seating and benches



Not all hard work



Very happy kids and teachers



Sponsorship

Broke Fair

5,000+ visitors

Good weather brings the crowds

Thanks to organising committee:

Mike Wilson, Maxine Alexander,

Gwen Lambkin, Jody Derrick,

Ralph Northey & myself



Summer Reading Program with

Singleton Library

Over 400 participants, encourages reading over summer holidays



Adopt a Spot – Broke Road

Sponsor community groups like Scouts & Rotary to clean up 4 times a year

Community announcements

Broke Christmas Carols



Broke Village
Christmas Carols
FRIDAY 1ST DECEMBER
REC GROUNDS COCHRANE ST BROKE
6:00 PM
SAUSAGE SIZZLE AND DRINKS
BYO
SANTA & GIFTS

Community announcements

Bulga Christmas Party & Disco



Community Christmas Party
&
Disco



Bulga Community Centre
Saturday 2nd December
6pm – 10pm

**Bring your children along to a fun night of disco, guessing
competition, games and most importantly**

SANTA

Parents are asked to supply a gift up to the value of \$20 wrapped and labelled with your child's name.
Presents can be left in the Hedley's garage at 5 Inlet Rd, across from the hall. There will be a box in the garage.

Cold Drinks, Sausage and Steak Sandwiches for Sale
BYO Party Food

Everyone Welcome - Entry Fee \$10 per family
RSVP & Enquiries: Phil Reid 0438 865 064

GLENCORE

Attachment 3- November 2017 Hunter Valley Protection Alliance consultation.

Hunter Valley Protection Alliance 11 December 2018.

Glencore Chief Operating Officer (Ian Cribb) email response 22 December 2018.

Bulga Coal Environment and Community Manager response 22 December 2018.



PO BOX 14 BROKE NSW 2330
PH 0408 234773
exec@huntervalleyprotectionalliance.com

Chief Operating Officer
Bulga Complex ... GLENCORE
Broke Rd
Singleton 2330

11th December 2017

Att Ian Cribb

Cc Ralph Northey, Chris Elsmore, John Bevan, Tony Bainton, John Krey.

Dear Sir,

We write to you to express a number of thoughts & concerns in regard to your proposed Bulga Coal Development Application SSD 4960 –Modification 2. Representatives of the HVPA met with Ralph Northey and his team mid November to be briefed on the proposed variationthis was of benefit but concerns were expressed which we now committed to document and communicate such to you . Firstly the mine was meant to finish originally in 2020. The ongoing extension has led to the further decay of both the Bulga and Broke community, a failure to meet annual commitments ,whether its noise, dust or visual; deterioration.. Any extension of the lease should therefore be focused on a plan that improves the attractiveness of the community such that at the end of the lease the population has increased, has better health and has not suffered capital depreciation of its property. We therefore want the following:
Permanent monitored Noise ,light and dust reduction commitments-as well as
1] Improved health monitoring and support of the community
2] Improved educational and recreational facilities .
3] other agreed items that improve the environment and attract new residents .
This can only be accomplished by Glencore committing to annual financial support of the community plus making positive commitments to the reductions of noise ,light and dust.

Noise ...

We respect the efforts made to date in regard to controlling the impact of noise on surrounding properties , it remains a difficult and troubling issue . Even with the bund wall being constructed in the daytime, the noise from your machinery at night time continues to cause concern and distress to nearby residents both in Broke and Bulga. You need to reflect on the view that the community was led to believe that with the construction of the "bund" or earth bank around your mining activities the impact of noise would be greatly reduced and there might be only 4 properties that should be impacted . Without knowing which 4 and acknowledging that construction of the "bund" is still underway [and probably subject to a 6 months delay] we would like to propose to you that when the work is completed that you voluntarily agree to reduce the max noise level to a level of 32db.

Committee:
Eden Anthony, Commodore Chris Elsmore RAN Rtd., Stewart Ewen OAM, Adrian Garton, Graeme Gibson OAM, Roger Goldfinch, Tom Jackson, Elizabeth Johnstone, Graeme O'Brien BA, M Ed Stud., Richard Owens AM, Alan Stevns, George Tlaskal, Hugh Upward.

PO BOX 14 BROKE NSW 2330

PH 0408 234773

exec@huntervalleyprotectionalliance.com

We believe this would have a positive impact on the community and be beneficial to all concerned.

As you will be aware the background noise assessed during the Optimisation Project application was 29dba (not the recommended minimum of 30dba as noted in the INP). It is usual for the Department of Planning to consider 5dba above the background level to be reasonable but we consider 3dba above the established background noise to be the target acceptable noise level for a rural setting.

Air Quality ...Dust

This subject remains of great concern and while we could express our concerns in detail we will leave this subject at this stage on the basis that you remain diligent in your efforts to max the regeneration of disturbed lands.

The quality of air in the Upper Hunter continues to be a major long-term problem for residents in Singleton and areas surrounding the open-cut mines. We accept that your company is making efforts to control your contribution to this health impacting pollution but nevertheless every open-cut mine contributes to poor quality of air as established by the EPA. Your proposed modification, if approved, will continue to contribute to the poor air quality in the Hunter Valley for another four years.

Light Pollution...

The construction of your bund will potentially assist but not eliminate the huge impact of yellow light occurring at night from your operations ...therefore **we believe you need to seriously review your lighting plan to overcome the appearance of multiple sunrises at night.**

The direction and elevation of your night lighting we believe is the cause of the lighting pollution in our eastern sky each night.

Broke / Bulga ...

Your desire to extend your mining lease for a further 4 years to extract more coal has an immediate and ongoing impact on the villages of Broke and Bulga.

The impact emerges in a multiple of ways, land values , health issues , traffic , noise and environmental perceptions [real and perceived].

Your last approval was based on a lesser VPA payment , this concept leads us to strongly recommend that this issue needs to be reviewed along with the method of contributing to the community, we are not in favour of a payment made in the structure of a VPA.

We see that the continued operation of open-cut mines in this area is not conducive to new residents coming to our villages which of course affect land values and lifestyle of the villages.

Equally a further assessment of a payment through Singleton Council is an unacceptable method of proceeding.

Historical reviews show such monies do not benefit the communities impacted .

As a community we view the VPAs agreed between the mining companies and the councils to be substantially a cash cow for the local council and with their bureaucratic and inefficient approach, the community sees little benefit and little offsetting of the impact of mine expansions. This will be evident to you with the lack of implementation of the Bulga Coal Optimisation Project VPA with singleton council.

Committee:

Eden Anthony, Commodore Chris Elsmore RAN Rtd., Stewart Ewen OAM, Adrian Garton, Graeme Gibson OAM, Roger Goldfinch, Tom Jackson, Elizabeth Johnstone, Graeme O'Brien BA, M Ed Stud., Richard Owens AM, Alan Stevens, George Taskal, Hugh Upward.



PO BOX 14 BROKE NSW 2330

PH 0408 234773

exec@huntervalleyprotectionalliance.com

Based on the experience with the Optimisation VPA any contribution to projects for the community must be allocated 100% for that project without Singleton Council taking a cut of the funding. It is our view that this process with Council does not benefit the community and sees a dilution of funding allocated for projects.

Therefore ...we wish to propose that as part of any application to extend the mining lease that Glencore commit funds to construct then staff and maintain a number of community facilities within the impacted region for the period of the mining lease ...

Examples being....

- i. **A community swimming pool in Broke associated with the Public School.**
- ii. **A Medical Centre to service both Broke & Bulga.**
- iii. **A Sports centre ...an Oval for Cricket /Football ,Tennis Courts/Basketball ...a venue that will attract activity and draw people into the area.**
- iv. **A Tavern ...a community venue to cater for community get together's**

These community assets could then be taken over by the Singleton Council at the expiry of your mining lease.

At the meeting with Ralph Northey we discussed a pro-rata of the existing VPA value based on an additional four years of mining activity to fund additional projects.

The projects listed above could amount to more than pro-rata VPA value. However, these projects would contribute substantially to the wellbeing and health of the local residents and add to Glencore's standing in the community.

There is another issue we feel appropriate to bring to your attention .

Glencore contributed to the Broke "beautification" plan. We would like to suggest that Glencore now proceed to undertake the work, as the plan highlighted the need to improve the village, the cost of such would not be great .

Broke will celebrate 200 years of settlement in some 6 years and work needs to start now for the occasion.

We remain available to discuss the issues raise in this letter .

Yours Faithfully

signed ...Stewart Ewen OAM
Chairman HVPA

Committee:

Eden Anthony, Commodore Chris Elsmore RAN Rtd., Stewart Ewen OAM, Adrian Garton, Graeme Gibson OAM, Roger Goldfinch, Tom Jackson, Elizabeth Johnstone, Graeme O'Brien BA, M Ed Stud., Richard Owens AM, Alan Stevens, George Taskal, Hugh Upward.

Northey, Ralph (Bulga Surface Ops - AU)

From: Cribb, Ian (Hunter Valley - AU)
Sent: Friday, 22 December 2017 9:55 AM
To: Stewart Ewen
Cc: Northey, Ralph (Bulga Surface Ops - AU); John Bevan; John Krey; Chris & Bindy Elsmore; Tony Bainton
Subject: RE: Glencore ...Bulga Open Cut Mine

Stewart

Ralph contacted me regarding a response to your letter.

I have decided that we would provide two responses. Ralph will respond to your suggestions and I will respond to your ongoing baseless claims.

Several months ago you contacted me and made unfounded comments about "out of control blast" and "previous mismanagement". As you would remember, we did not fire a blast on that day. In fact we had delayed a blast due to the prevailing weather conditions.

You now claim that Bulga has "failed to meet annual commitments ,whether its noise, dust or visual deterioration".

Under our DA conditions we are required to present Annual reviews and to make them available on the Bulga Coal web site.

The 2017 Annual Reviews will support the claim that we are operating in accordance with our DA's and management plans which will include a section in it where we present any non compliances for 2017.

We have had one event classified as a "noise affected night" at the Broke Cemetery. This is where the attended noise monitoring measured noise levels above our criteria for a short period. As per the management plan we notified the Department of Planning and Environment and retested within a week (as per the Management plan) and were measured below the criteria. We will include this event and the Mushroom Composters air quality exceedances in the non-compliance section of the 2017 Annual Review but again these isolated exceedances were managed in accordance with the respective management plans.

Bulga Coal will continue to engage with all of the community representatives and hopefully our future engagement with the HVPA will be absent of misinformation.

I am proud of the performance of Bulga Coal in relation to our environment and community performance.

Should you want to discuss this matter I will make myself available in the New Year.

Regards

Ian

-----Original Message-----

From: Stewart Ewen [mailto:sfe364@outlook.com]
Sent: Monday, 11 December 2017 6:05 AM
To: Cribb, Ian (Hunter Valley - AU) <Ian.Cribb@glencore.com>
Cc: Northey, Ralph (Bulga Surface Ops - AU) <Ralph.Northey@glencore.com.au>; John Bevan <john@lavenderridge.com.au>; John Krey <finisterre.john@gmail.com>; Chris & Bindy Elsmore <cjbe@hunterlink.net.au>; Tony Bainton <antonybainton@gmail.com>

Subject: Glencore ...Bulga Open Cut Mine

Ian ,

please find attached a letter addressed to you and Ralph Northey .

This letter makes a number of suggestions we feel are valid in terms of your application to modify your approvals for further mining activities .

We remain available to meet and discuss issues and thoughts relating to such .

regards,

Stewart Ewen

Chairman

Hunter Valley Protection Alliance

BULGA OPEN CUT

GLENCORE

Mr Stewart Ewen OAM
Chairman HVPA

Dear Stewart

In response to your letter dated 11 December 2017, I understand you are expressing the concerns and aspiration of the Hunter Valley Protection Alliance in relation to consultation with Greg Newton and myself on the 17 November 2017. We presented information relating to the proposed Bulga Open Cut Consent Modification Number 2 and the potential delay of the completion of the outer face of the Noise and visual bund caused by recent industrial action.

Records of the consultation on the 17 November and your letter will be included in the Modification Number 2 consultation records.

Bulga Open Cut has approval to mine until 2035 and does not agree that our operations have led to "further decay of both the Bulga and Broke Community".

Your letter dated 11 December 2017 makes a number of claims that Bulga Coal feels are without basis. It would be appreciated if you could clarify specifically how you believe Bulga Coal has failed to meet its annual commitment as the data does not indicate this.

Bulga Coal takes its social responsibility seriously and actively supports and participates in community groups, events and projects. This is demonstrated through a number of initiatives including:

- Being the main sponsor of the Broke Fair, Broke Fordwich Wine and Tourism Association (BFWTA) and events for quite a number of years.
- Bulga Coal has also actively supported the Broke Public school for quite a number of years, only this year conducted a working bee to upgrade their lunch facility to accommodate the growing number of school children attending which has risen from 50 to nearly 90 in the past 5 years.
- Bulga Coal has worked with the Broke Fordwich Landcare group over a number of years and this year assisting with the weed maintenance of McNamara Park

GLENCORE

eradicating the Prickly Pear, Africa Olive, wandering Dew and African Love Grass.

- Bulga Coal assisted the community refurbishment of the War Memorial and the hosting of the Carols by Candlelight held 2 weeks ago. Bulga Coal also supported the Milbrodale Mountain Classic and Bulga Beats Festival this year.

So far the Bulga Voluntary Planning Agreement has help fund the refurbishment of the Broke Hall and critical maintenance work on the St Paul's Anglican Church in Broke. We look forward to seeing the remainder of the VPA similarly adding tangible value in the community.

We believe the support Bulga Coal has provided to the immediate community has provided tangible benefits.

Noise

As you would be aware Bulga Coal actively manages noise levels to remain complaint and works with the impacted and concerned community members. Bulga Coal has put an additional real time noise monitor into Blaxland street of their own volition to help ensure we are operating within the noise criteria and to provide some assurance of this to the immediate neighbors.

Similarly Bulga Coal has recently moved the Milbrodale Road real time noise monitor further north to help address noise concerns raised in the immediate community.

Bulga Coal is meeting its compliance obligations in relation to noise management and will do so into the future.

Air Quality

Bulga Coal acknowledges that air quality impacts is a concern to the community. Bulga Coal has a strong focus on keeping the disturbed area to a minimum and progressively rehabilitation as much as is practical which helps reduce dust generation. Bulga Coal also has a strong focus on the minimization/reduction of dust generated by mining activity and is meeting its compliance obligations in relation to air quality management and will do so into the future.

Lighting

Bulga Coal notes the concerns about lighting impact on the community and will continue to manage this issue with consideration of the community and the safe working environment of its employees.

GLENCORE

Broke/ Bulga (VPA)

We note the issues you have raised and proposals in relation to the Bulga Optimisation Project VPA and possible future contributions by Bulga Coal. These will be included in the Modification Number 2 consultation and associated assessments.

Bulga Coal does not agree with the assertions made in relation to the ineffectiveness of the VPA structure. I raised the HVPA concerns about the lack of progress and desires to promote the commencement of the beautification aspects at the VPA meeting on the 18 December.

As you would appreciate that some of the issues raised about the VPA are not within our control. As mentioned above, this feedback was provided to the council but I suggest you may want to raise your concerns direct with council as well.

In conclusion

We are extremely proud of the performance of Bulga Coal in relation to environment and community performance and don't believe your comments reflect the views of the broader community. Notwithstanding this, your comments will be considered by the operations for ongoing management and input into the environmental assessment supporting Modification Number 2.

Yours Sincerely,

Ralph Northey
Environment and Community Manager
Bulga Coal

GLENCORE

Attachment 4- January 2018 Bulga Coal letter to the community and face to face consultation summary.

January 2018

Dear Community Member

Revised completion of the outer face of the Noise and Visual Bund

In November 2017 at the Bulga Coal Community barbeques we communicated that Protected Industrial Action undertaken over an extended period during the year had affected on our ability to progress the completion of the Noise and Visual Bund as planned.

Our Mining Consent has a condition requiring the western (outer) face to be constructed to full height and with an initial vegetation cover within 4 years of the date of approval (1 December 2014). We also committed to constructing the outer face of the Noise and Visual Bund between the hours of 7am to 7pm to reduce the noise and visual impact on the community.

With the industrial action over, we have been able to re-forecast the work required to complete the outer face. The figure overleaf shows the Noise and Visual Bund outer face within the yellow line. The figure also shows the areas that are already rehabilitated (dark green) and the areas forecast to be rehabilitated by the end of 2018 (light green).

We are now proposing to have the outer face of the Noise and Visual Bund completed by the end of August 2019, instead of the December 2018 date required under the Consent. The Noise and Visual Bund outer face areas not completed by the end of 2018 are shown in pink on the figure. It should be noted that the outer face overburden (remaining dump heights shown on the figure) will be in place by the end of April 2019. The remaining reshaping and rehabilitation will be completed after this using considerably less equipment.

We have investigated options to complete the outer face by the end of 2018 with additional equipment and by constructing the outer face 24 hours per day. However, we believe both of these options would generate unacceptable noise impacts and we will not be pursuing either.

As a result, we are now preparing an application to modify our Consent to extend the Noise and Visual Bund completion date.

We thank the community in advance for your understanding, and trust you will appreciate that we are taking all reasonable measures to complete the outer face as soon as is practicably possible.

Please don't hesitate to contact me on 0418 439 874 or 6570 2539 if you have any queries about this matter.

Yours sincerely



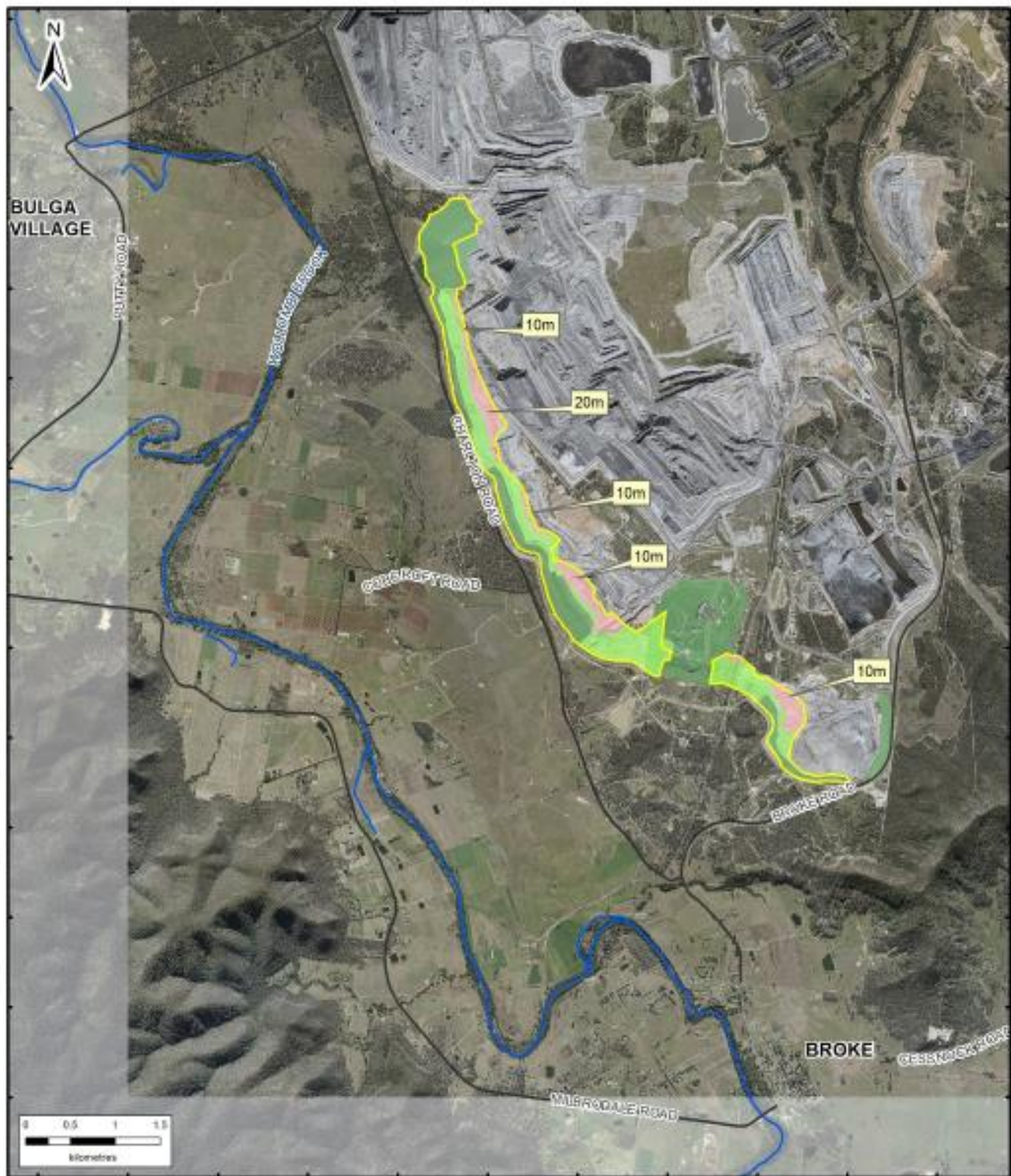
Ralph Northey
Environment and Community Manager

ralph.northey@glencore.com.au

Private Mail Bag 8, Singleton, NSW 2330
567 Broke Road, Singleton, NSW 2330
T + 61 2 6570 2400 F + 61 2 6570 2450 www.glencore.com

Bulga Coal Management Pty Ltd ABN 48 055 534 391
For and on behalf of the Bulga Joint Venture

Rehabilitation of the outer face of the Noise and Visual Bund



Legend

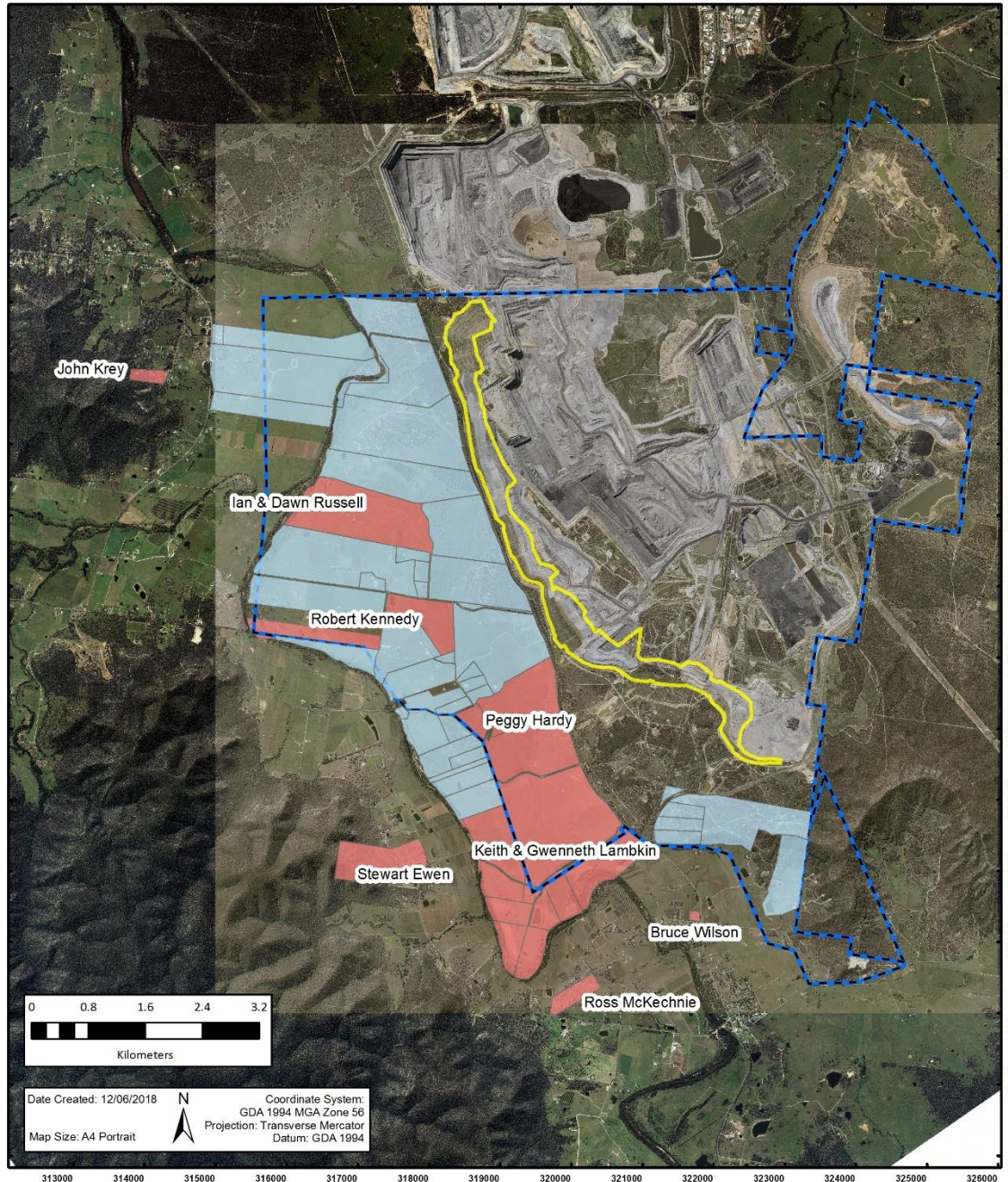
- Noise and Visual Bund Outer Face
- 2018 Noise and Visual Bund Rehabilitation
- 2019 Noise and Visual Bund Rehabilitation
- Completed Noise and Visual Bund Rehabilitation

GLENCORE

Bulga Open Cut

Figure 2 - Immediate Neighbours Consultation

GLENCORE



Legend

- Mining Lease
- Noise and Visual Bund Outer Face
- Immediate / Key Neighbours
- Bulga Coal Owned Land

DISCLAIMER
Subject To Survey.

Glencore makes every effort to ensure the quality of the information available on this map. Before relying on the information on this map, users should carefully evaluate its accuracy, currency, completeness and relevance for their purposes, and should obtain any appropriate professional advice relevant to their particular circumstances. Glencore cannot guarantee and assumes no responsibility for the accuracy, currency or completeness of the information and by using this map you accept that Glencore has no liability for any loss or damage in any form whatsoever caused directly or indirectly from the use of this map.

DATA SOURCE
© NSW Department of Finance, Services & Innovation 2018
© NSW Resources & Geoscience (DRG) 2018
© Glencore 2018

GLENCORE

Property owners	Consultation date	Consultation
Bruce Wilson	23/01/2018	Ralph Northey presented the January 2018 community letter "Revised completion of the noise and visual bund" to Bruce Wilson. Bruce is concerned about the mine noise but not overly concerned about the delay in the completing of the noise and visual bund.
Robert Kennedy	22/02/2018	Ralph Northey presented the January 2018 community letter "Revised completion of the noise and visual bund" to Robert Kennedy. Robert was not concerned by the delay to the completion of the outer face of the noise and visual bund and complimented us on the work completed to date.
Stewart Ewen	17/11/2018	Ralph Northey consulted with Stewart Ewen as the Chair of the Hunter Valley Protection Alliance and property owner. See attachments 3 and 8.
Ian and Dawn Russell	21/02/2018	Ralph Northey presented the January 2018 community letter "Revised completion of the noise and visual bund" to Ian and Dawn. The Russells were unaware of the time frame for the completion of the outer face and not concerned by the delay to the completion of the outer face of the noise and visual bund.
Ross McKechnie	15/02/2018	Ralph Northey spoke to Ross McKechnie on the phone. Ross had received the letter distributed in January and did not need any further consultation.
John Krey	15/02/2018	Ralph Northey spoke to John Krey on the phone. John Krey did not think the Bulga Milbrodale Progress Association would need a separate meeting but he said he would put it to them next week and said (he)"doesn't see it as being a concern to the Bulga community". John latter confirmed that the Bulga Milobrodale Progress Association would be happy to be consulted at he Bulga Coal Community BBQ in April.
Peggy Hardy	12/04/2018	Peggy Hardy attended the Broke Community BBQ on the 12 April and was not concerned about the delay to the completion of the outer face of the noise and visual bund.
Keith and Gweneth Lambkin	19/03/2018	Ralph Northey met Gweneth, Keith and Annie Lambkin at their Dairy and presented the January Community letter to them. They were not aware of the time frame commitment and were not concerned about the delay.

GLENCORE

Attachment 5- April 2018 Community Barbeque presentation

GLENCORE



Bulga Coal

Community Barbeque April 2018

Bulga Coal Community Barbeque

- Welcome
- Purpose
- Introductions
- Format
- Drink responsibly
- Music – Elisa Kate



GLENCORE



Bulga Coal

Open Cut Update

Bulga Coal

Bulga Coal is located between Charlton and Broke Roads south of the Mt Thorley Mine. We completed 101 ha of rehabilitation in 2017 and will complete 156 ha in 2018.

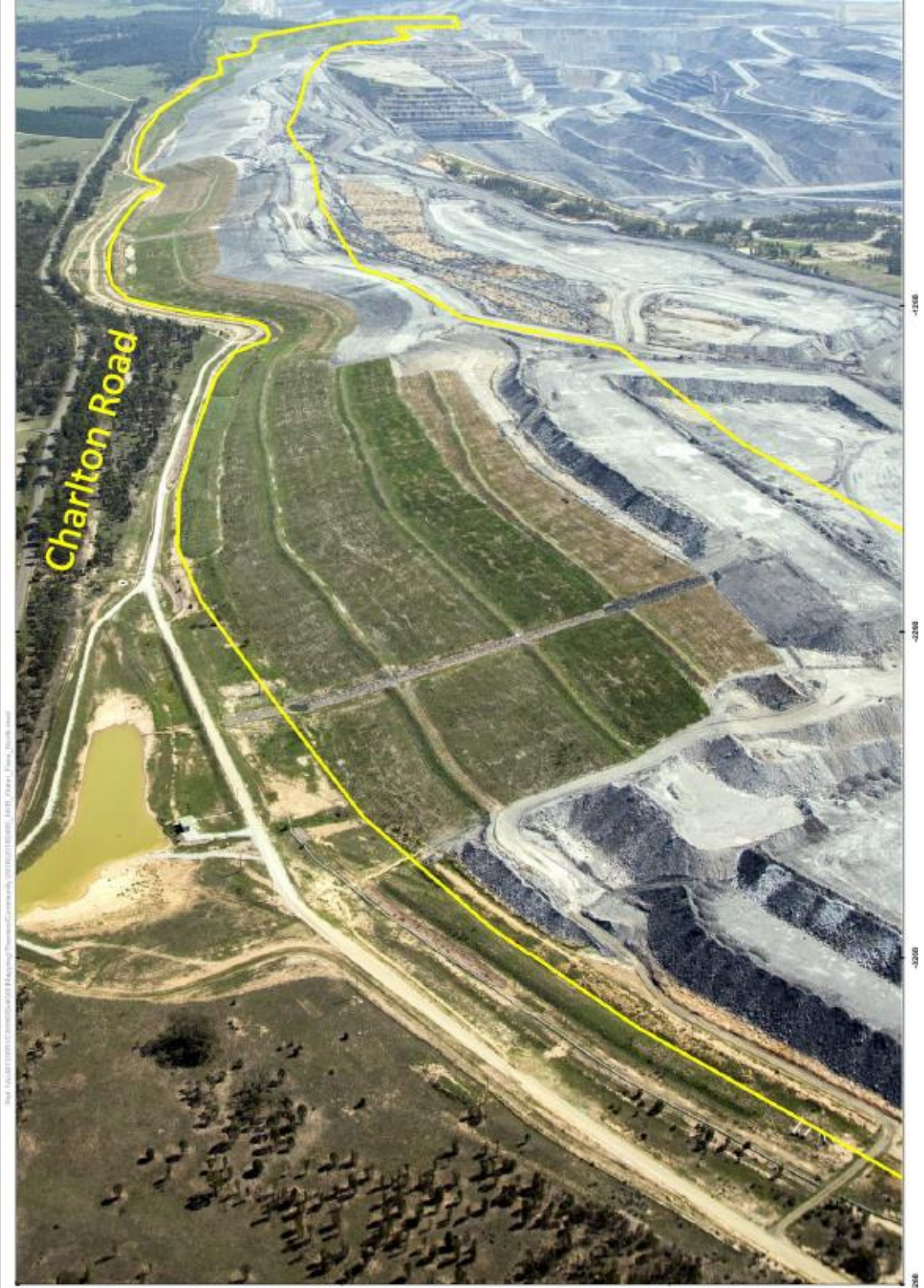


Noise and Visual Bund Progress

Looking north along Charlton Rd

Bulga Coal will complete the outer face of the noise and visual bund by the end of August 2019

We are now going to apply to modify our development consent to extend the period to complete the outer face of the noise and visual bund from 1 December 2018 to 31 August 2019.



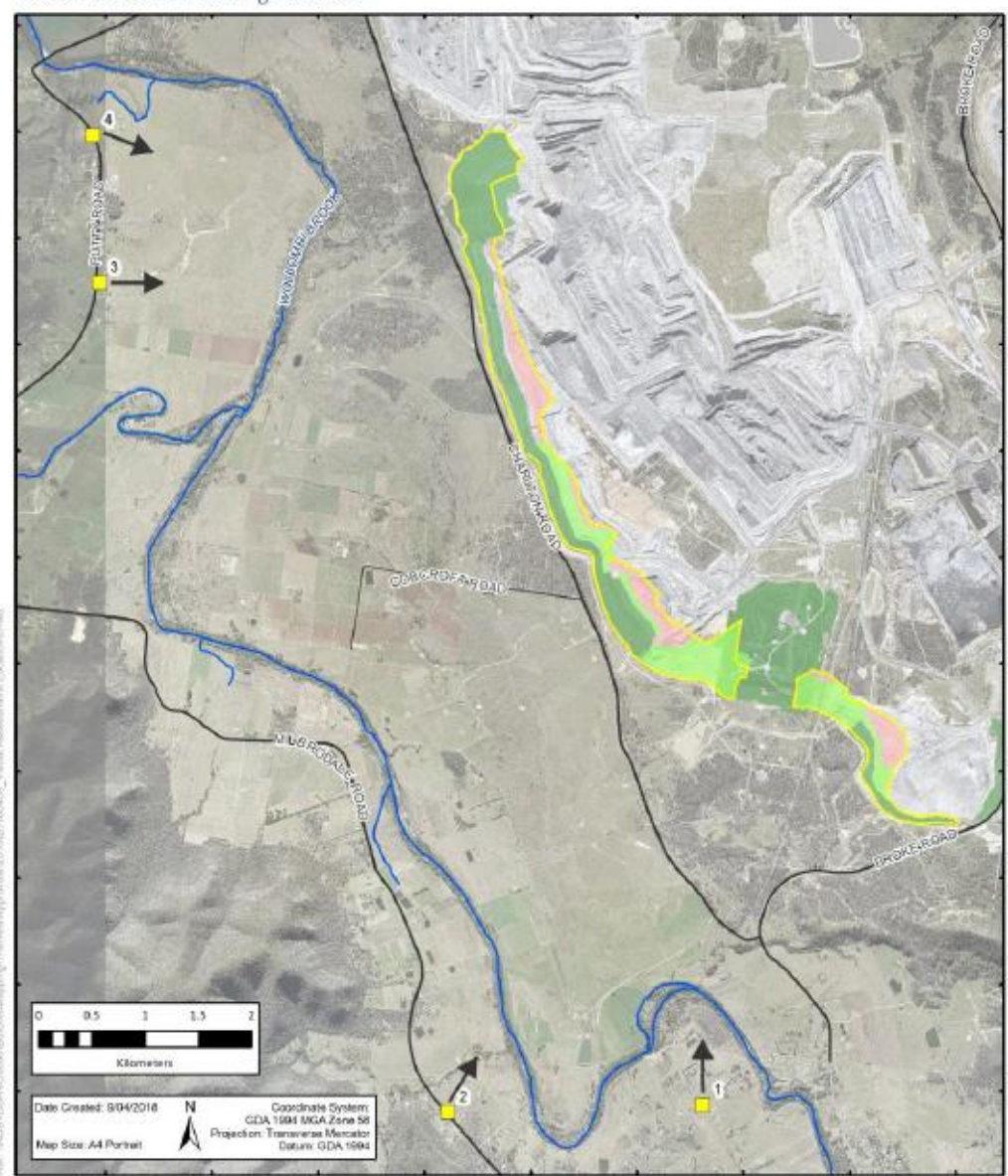
Looking east from over Ted's place



Bulga Open Cut

Visual Assessment Viewing Locations

GLENCORE



Legend

- Visual Assessment Locations
- Noise and Visual Bund Outer Face
- 2018 Noise and Visual Bund Rehabilitation
- 2019 Noise and Visual Bund Rehabilitation
- Completed Noise and Visual Bund Rehabilitation

DISCLAIMER
 Support To Survey:
 Glencore makes every effort to ensure the quality of the information available on this map. Before relying on the information on this map, users should carefully evaluate its accuracy, currency, completeness and relevance for their purposes, and should obtain any appropriate professional advice relevant to their particular circumstances. Glencore cannot guarantee and assumes no responsibility for the accuracy, currency or completeness of the information and by using this map you accept that Glencore has no liability for any loss or damage in any form whatsoever caused directly or indirectly from the use of this map.

DATA SOURCE
 © NSW Department of Finance, Services & Innovation 2018
 © NSW Resources & Geoscience (DRG) 2018
 © Glencore 2018

GLENCORE

Bulga Open Cut

Viewing Location 4 - Bulga Community Bushfire Brigade

GLENCORE



Legend

- 2019 Rehabilitation
- End of 2018 Rehabilitation

DISCLAIMER
 Subject To Survey.
 Glencore makes every effort to ensure the quality of the information available on this map. Before relying on the information on this map, users should carefully evaluate its accuracy, currency, completeness and relevance for their purposes, and should obtain any appropriate professional advice relevant to their particular circumstances. Glencore cannot guarantee and assumes no responsibility for the accuracy, currency or completeness of the information and by using this map you accept that Glencore has no liability for any loss or damage in any form whatsoever caused directly or indirectly from the use of this map.

DATA SOURCE
 © NSW Department of Finance, Services & Innovation 2018
 © NSW Resources & Geoscience (DRG) 2018
 © Glencore 2018

Ref: 1, Mapping Themes/Approach/10/2010/0000_NVD_Visual_Visual.mxd

GLENCORE

Bulga Open Cut

Viewing Location 3 - Putty Road

GLENCORE



Legend

- 2019 Rehabilitation
- End of 2018 Rehabilitation

DISCLAIMER
Subject To Survey
Glencore makes every effort to ensure the quality of the information available on this map. Before relying on the information on this map, users should carefully evaluate its accuracy, currency, completeness and relevance for their purposes, and should obtain any appropriate professional advice relevant to their particular circumstances. Glencore cannot guarantee and assumes no responsibility for the accuracy, currency or completeness of the information and by using this map you accept that Glencore has no liability for any loss or damage in any form whatsoever caused directly or indirectly from the use of this map.

DATA SOURCE
© NSW Department of Finance, Services & Innovation 2018
© NSW Resources & Geoscience (DRG) 2018
© Glencore 2018

Bulga Open Cut

Viewing Location 2 - Milbrodale Road

GLENCORE



Legend

- 2019 Rehabilitation
- End of 2018 Rehabilitation

DISCLAIMER
 Subject To Survey.
 Glencore makes every effort to ensure the quality of the information available on this map. Before relying on the information on this map, users should carefully evaluate its accuracy, currency, completeness and relevance for their purposes, and should obtain any appropriate professional advice relevant to their particular circumstances. Glencore cannot guarantee and assumes no responsibility for the accuracy, currency or completeness of the information and by using this map you accept that Glencore has no liability for any loss or damage in any form whatsoever caused directly or indirectly from the use of this map.

DATA SOURCE
 © NSW Department of Finance, Services & Innovation 2018
 © NSW Resources & Geoscience (DRG) 2018
 © Glencore 2018

Ref: L:\Mapping\Thematic\Approvals\2018\20180405_P105_Visual_View2.mxd



— 2019 Rehabilitation
— End of 2018 Rehabilitation

DISCLAIMER
Subject To Survey.

Glencore makes every effort to ensure the quality of the information available on this map. Before relying on the information on this map, users should carefully evaluate its accuracy, currency, completeness and relevance for their purposes, and should obtain any appropriate professional advice relevant to their particular circumstances. Glencore cannot guarantee and assumes no responsibility for the accuracy, currency or completeness of the information and by using this map you accept that Glencore has no liability for any loss or damage in any form whatsoever caused directly or indirectly from the use of this map.

DATA SOURCE
© NSW Department of Finance, Services
& Innovation 2018
© NSW Resources & Geoscience (DRG) 2018
© Glencore 2018

Bulga Open Cut Development Consent modification

As much as we are disappointed we are not going to have the outer face of the noise and visual bund completed by the 1st December 2018 as per our original development consent target, we believe the shortfall is only a limited visual impact that will be redressed by the end August 2019.

Our ability to operate within our approved noise criteria is not impacted by the delay in the completion of the outer face of the noise and visual bund. This has been verified with modelling of proposed mining activity.

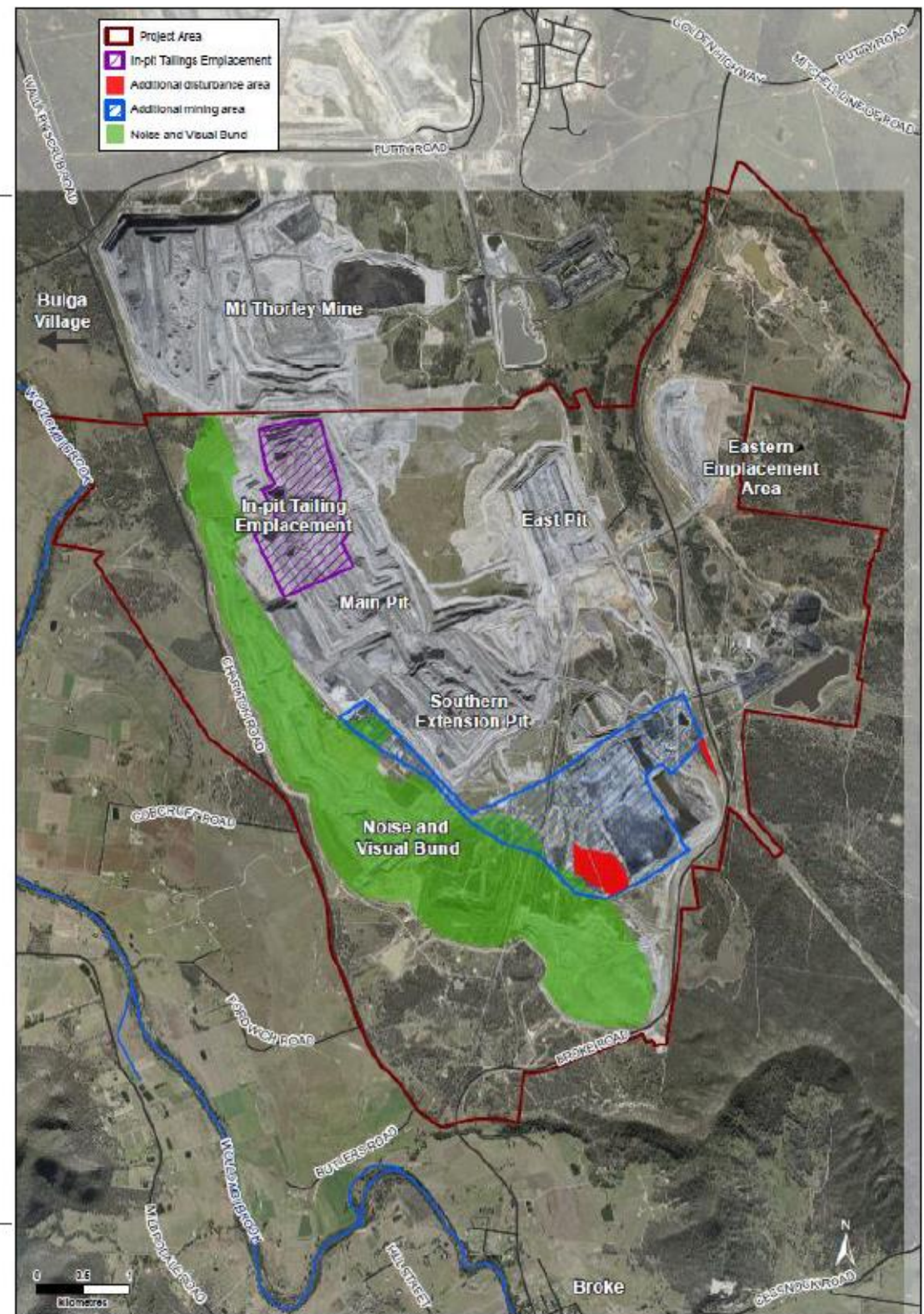
We are now going to apply to modify our development consent to extend the period to complete the outer face of the noise and visual bund from 1 December 2018 to 31 August 2019.

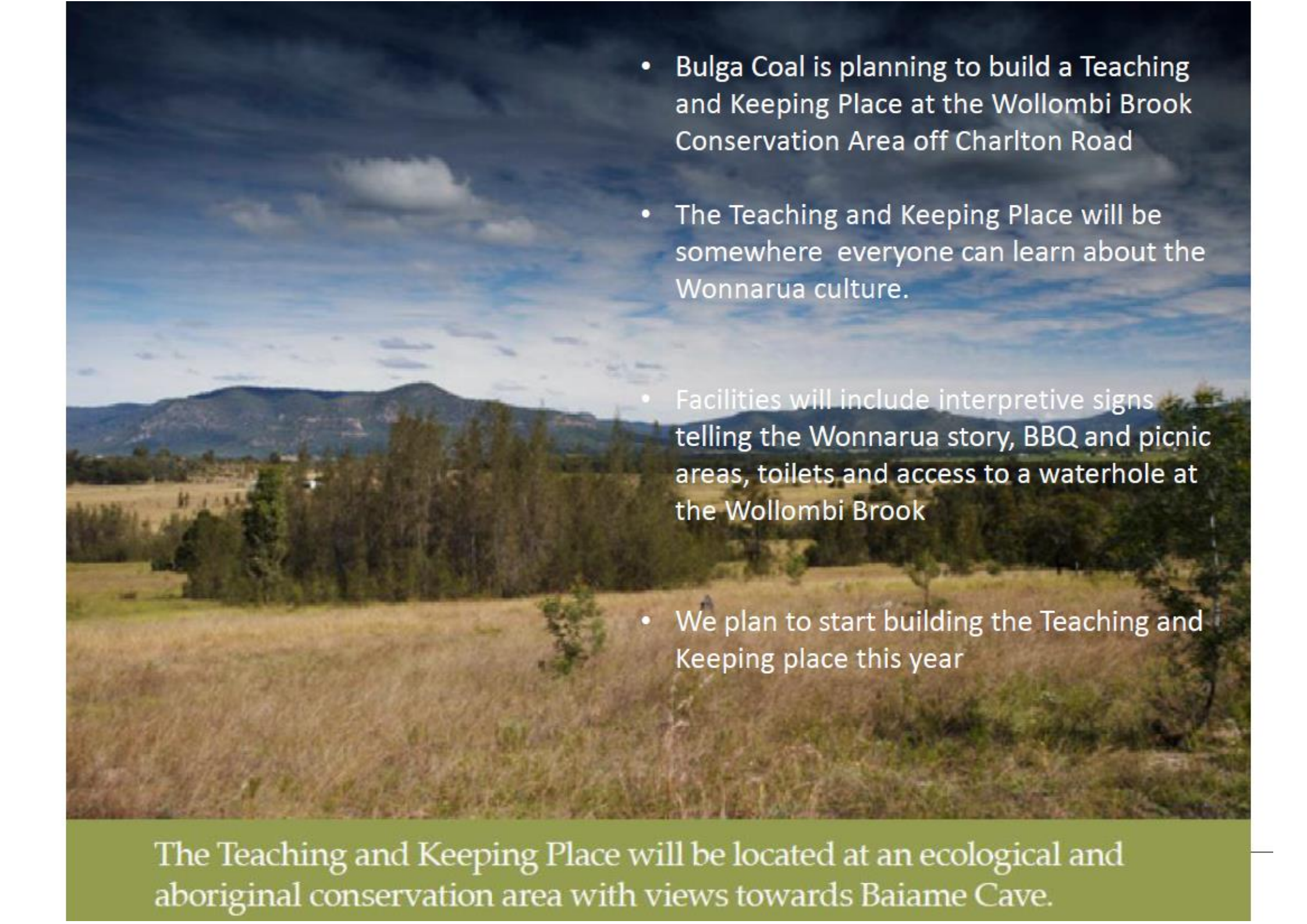
A flyer about this will be included in the April Community Newsletter.

Relocation of tailings Development Consent modification

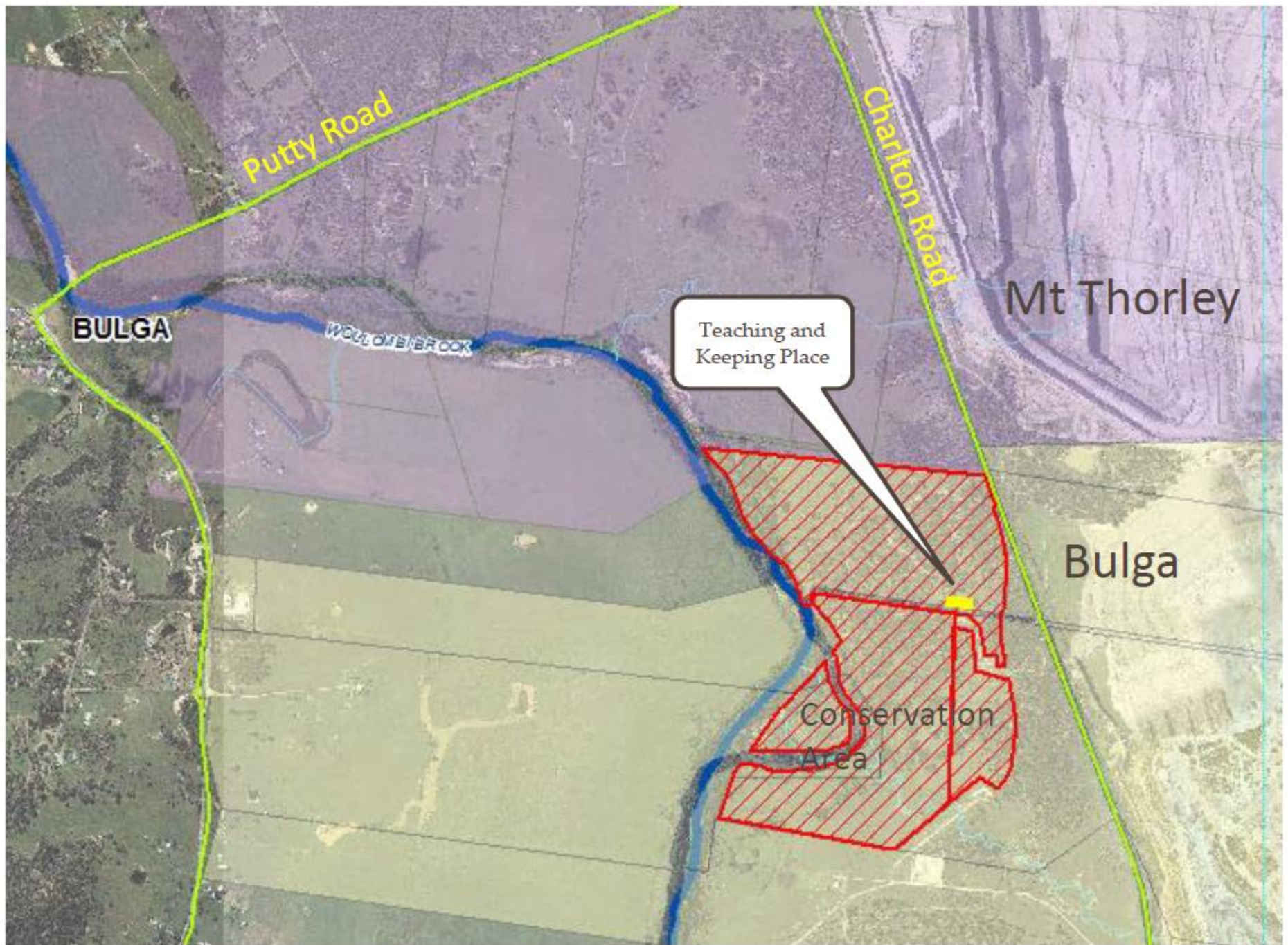
The various assessments associated with this modification are still being completed.

When we have the results of these assessments they will be distributed to the community and we will hold open consultation sessions at both the Broke and Bulga halls.



- 
- Bulga Coal is planning to build a Teaching and Keeping Place at the Wollombi Brook Conservation Area off Charlton Road
 - The Teaching and Keeping Place will be somewhere everyone can learn about the Wonnarua culture.
 - Facilities will include interpretive signs telling the Wonnarua story, BBQ and picnic areas, toilets and access to a waterhole at the Wollombi Brook
 - We plan to start building the Teaching and Keeping place this year

The Teaching and Keeping Place will be located at an ecological and aboriginal conservation area with views towards Baiame Cave.



GLENCORE



Bulga Coal

Underground update

Bulga Underground Operations

- After 26 years, mining of the final longwall panel will be completed this week.
- Underground workings will be sealed by the End of August 2018.
- Redundant infrastructure will be decommissioned and rehabilitated by the end of the year.



- Bulga Coal will continue to operate the Blakefield North pre-drainage gas wells and the 9MW power station.
- All approvals will be retained to support any future potential underground mining.

GLENCORE




Bulga Coal

Community update

Voluntary Planning Agreement update

Committee formed with community, Council & Bulga Coal to administer projects in Village Master Plans

- Disabled toilets – Bulga Hall now complete
 - Exterior painting on the hall
 - Community funding for local events
- 
- Remaining funding (approximately \$215K) will be used for
 - Bulga Recreation Ground: shade sail, soft fall in the playground, picnic facilities
 - Clubhouse repairs
 - Cemetery restoration

Voluntary Planning Agreement update

BROKE

- Broke Hall renovations
- St Andrews Church painting & footings
- Remaining funding (approximately \$200K) will go towards
 - Stewart McTaggart Park: shade sail, seating, skatepark
 - Village entry tree planting



Thanks to committee members (past & present):

- Pauline Rayner, Kristy Hedley, Jan Hedley, John Krey, Christina Metlikovec, Marie Mitchell (Bulga) & Gwen Lambkin, Eden Anthony, Casey Wood (Broke), Councillor Tony McNamara
- for their patience, time & passion for improving our communities.

Partnerships

Broke School

- Furniture to support teaching of Project Based Learning – critical thinking, collaboration, innovation
- Scoop rockers, whiteboard tables, lap desks, collaboration tables



A LITTLE BIT OF
ITALY IN **BROKE**



Lots of happy visitors to the
area over the weekend
11 participating venues

Glencore community grants – now open

Community Grants!

Funding is now open for not for profit community groups (includes schools, preschools) until April 30th.

Apply online or view the criteria at Glencore Smarty Grants <https://glencore.smartygrants.com.au/2018GenGrantsR1>

Up to \$2,500 available!



GLENCORE

Attachment 6- April 2018 Community newsletter and flyer

Community Newsletter

April 2018

26 years of underground mining at Bulga

Sadly, mining of the final longwall panel at the Blakefield South operation will be completed this month. Once mining is complete, the underground workings will be sealed and the redundant infrastructure will be decommissioned and sites rehabilitated. Bulga Coal will continue to operate the Blakefield North pre drainage gas wells to provide gas for the 9MW power station.

Bulga Underground has employed a lot of people over the past 26 years with about 350 people being employed until recently.

As much as there are currently no plans to recommence underground mining, we are going to retain all of our approvals to support any future potential underground mining.



Bulga Underground's Red Crew. Sadly underground mining will finish in April and the mine will be sealed.



Rehabilitation exceeds target

In 2017 we rehabilitated 96 hectares across our site, 10 hectares more than planned. The recent rain has been great for us all and will give our young trees a much needed boost. We are planning to rehabilitate 156 hectares around the site this year.

We are rehabilitating the Eastern Emplacement Area as we build it. You can see this area east of Broke Road as you drive towards Singleton. It is seeded with the Grey Box - Ironbark Woodland community. The area next to the road is planned to be fully rehabilitated by the end of the year.

Update on completion of the outer face of the noise and visual bund



We are continuing to build the outer face of the noise and visual bund and rehabilitate it as we build it.

The noise and visual bund runs along the western and southern limits of our open cut mine and aims to reduce what you see and hear from our mine.

Our mine approval has the completion date of the outer face as December 2018, however the extended industrial action last year has delayed this work. We will now complete the outer face by August 2019.

We are preparing an application to modify our development consent to extend the completion date. The enclosed flyer shows how much of the noise and visual bund will be left to be completed at the end of 2018 from four locations in the community.

The noise and visual bund forms a barrier between the mine and the community. The yellow outline shows the limit of the outer face of the noise and visual bund which will be completed in 2019.



Bulga Coal - Modification 2 Tailings Relocation

In the November newsletter last year information was provided on a proposed modification of our development consent that included the relocation of tailings from an existing storage facility so we can mine the underlying coal.

The various assessments associated with this modification are still being completed. When we have the results of these assessments a

summary of the results will be distributed to the community and we will hold open consultation sessions at both the Broke and Bulga halls.

Please contact Ralph Northey if you would like to know more about these proposed development consent modifications (contact details on page 4).



Voluntary Planning Agreement – benefiting the local community

A community committee has been working with Singleton Council and Bulga Coal to allocate funding for projects that benefit Bulga and Broke.

PROJECTS FUNDED IN BROKE:

Broke Hall refurbishment

\$109,494.83

St Andrews Church painting & restoration

\$6,573.00

Community events funding

\$10,000.00

The remainder of the funding (around \$200K) have been earmarked towards village entry tree planting, McTaggart Park playground shade sail, seating and a skate park.



The Broke Hall received major renovations from funding in the Voluntary Planning Agreement. The Broke Hall received a new paint job and disabled toilets.

PROJECTS FUNDED IN BULGA:

Bulga Hall – disabled toilet

\$34,724.39

Bulga Hall – exterior painting

\$9,950.00

Community events funding Bulga

\$10,000.00

The remaining funds (approximately \$200K) have been earmarked for the Bulga Recreation Ground (playground shade sail, soft fall, picnic areas, clubhouse maintenance) and cemetery restoration.

We would like to thank the following community committee members (past and present) for their passion for improving our communities and volunteering their time:

Pauline Rayner, Kristy Hedley, Jan Hedley, John Krey, Marie Mitchell, Christina Metlikovec, Gwen Lambkin, Eden Anthony, Casey Wood and Councillor Tony McNamara.

Broke School encourages creativity

Broke Public School is encouraging creativity, critical thinking, innovation, communication and collaboration through the teaching of Project Based Learning.

To support project based learning, Bulga Coal has provided \$10,600 for learning spaces in each classroom.

From scoop rockers, whiteboard tables and lap desks to collaboration tables, the furniture in all 4 classrooms allows the teacher and students to change up their learning spaces as needed. Just look at those smiling faces!



Left: Year 4/5/6 teacher Alex Mahony with her students at the collaboration table. Right: Scoop rockers & lap tables used both in and outdoors.



Wonnarua Teaching and Keeping Place in Broke



The Teaching and Keeping Place will be located at an ecological and aboriginal conservation area with views towards Baiame Cave.

Bulga Coal is planning to build an Aboriginal Teaching and Keeping Place at the Wollombi Brook conservation area, off Charlton Road.

The aim is to showcase and celebrate Wonnarua culture and provide storage for artefacts found at our mine site. The area will include signage telling the Wonnarua story, barbeque facilities, toilets and access to a waterhole at the Wollombi Brook.

The Broke Bulga area is rich in Aboriginal history, with many sites, places and landscapes of spiritual significance to the Wonnarua people. The last recorded bora ceremony was held in Bulga in 1852 with as many as 600 Aboriginal people.

We hope to start building the Teaching and Keeping Place this year which can be used by the community, schools and tourists.

Community Grants!

Funding is now open for not for profit community groups (includes schools, preschools) until April 30th.

Apply online or view the criteria at Glencore Smarty Grants <https://glencore.smartygrants.com.au/2018GenGrantsR1>

Up to \$2,500 available!



From Brook to Broke

If you are new to the area or would like a copy of the local history, please contact Teegan on 6570 2976 or email teegan.luntyward@glencore.com.au

The book is free for local households in Broke. Additional copies are available for sale through the Singleton Museum and Singleton Visitor Information Centre for \$20.



Further information, please contact

Ralph Northey - Bulga Coal - Environment and Community Manager
T: 6570 2539 | M: 0418 439 874 | E: ralph.northey@glencore.com.au

Community Complaints Line 1800 332 693 | www.bulgacoal.com.au



April 2019

Dear residents,

Bulga Coal noise and visual bund outer face completed by the end of August 2019.

Bulga Coal is now planning to have the outer face of the noise and visual bund completed by the end of August 2019. This includes the planting of an initial cover of vegetation (which is a little dependent on the rain). The delay in completing the outer face of the noise and visual bund is due to the protected industrial action undertaken over an extended period during 2017.

The pictures overleaf have been prepared to help you understand what will be completed by the end of 2018 and what will be completed before the end of August in 2019.

The figure on the back shows where the pictures were photographed from. It should be noted that these photographs were taken with telephoto lenses so that we can help you see the difference between the end of 2018 and the end of August 2019. It should also be noted that the outer face overburden (remaining dump heights shown on the figure) will be in place by the end of April 2019. The remaining reshaping and rehabilitation will be completed after this using considerably less equipment.

As much as we are disappointed we are not going to have the outer face of the noise and visual bund completed by the 1st December 2018 as per our development consent target, we believe the shortfall is only a limited visual impact that will be redressed by the end of August 2019.

Our ability to operate within our approved noise criteria is not impacted by the delay in the completion of the outer face of the noise and visual bund. This has been verified with modelling of proposed mining activity.

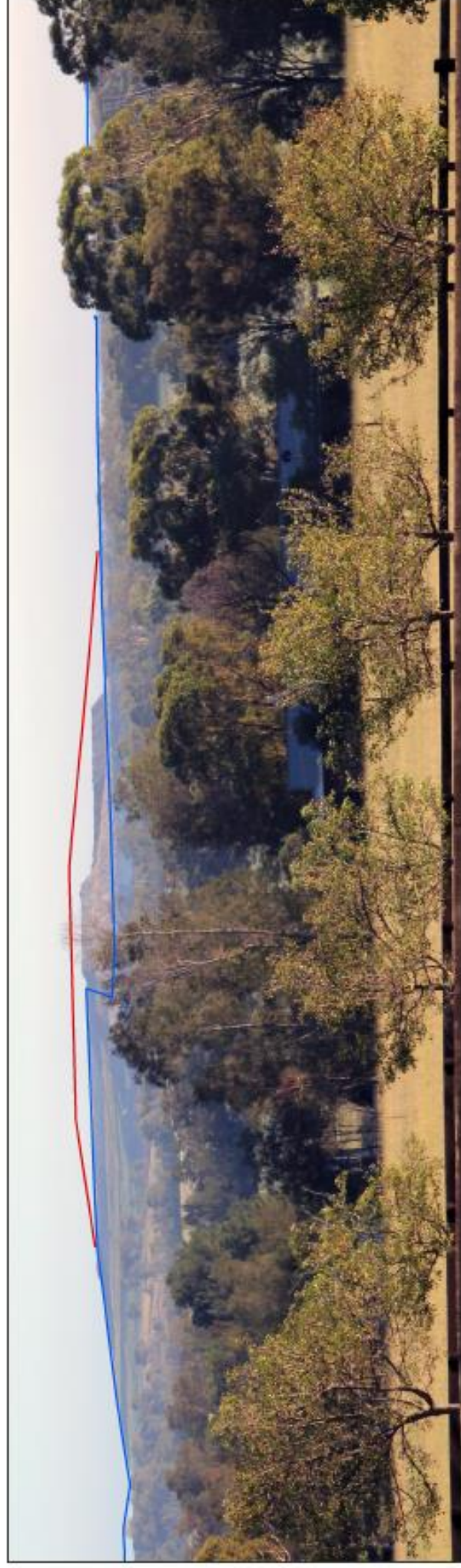
We are now going to apply to modify the Development Consent to extend the period to complete the outer face of the noise and visual bund to the end of August 2019.

Do not hesitate to contact me on 0418 439 874 or by email: ralph.northey@glencore.com.au should you like any further clarification or like to provide comment on the proposed modification.

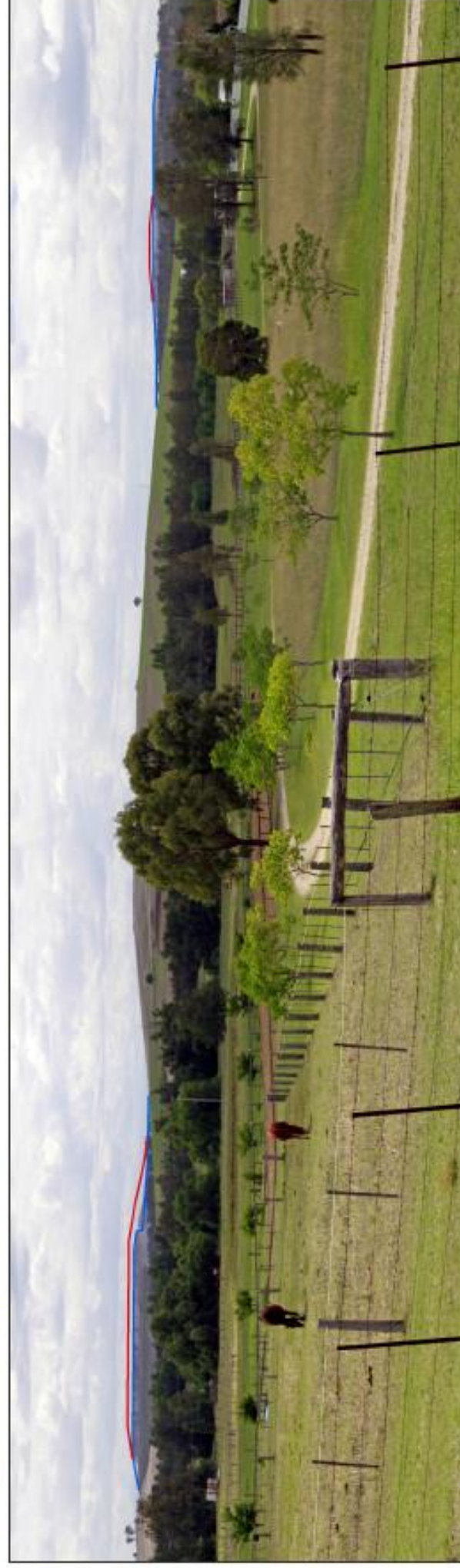
Kind regards

Ralph Northey
Environment and Community Manager

Viewing Location 1 – Hill Street



Viewing Location 2 – Milbrodale Road



Viewing Location 3 – Putty Road



Viewing Location 4 – Bulga Community Bushfire Brigade

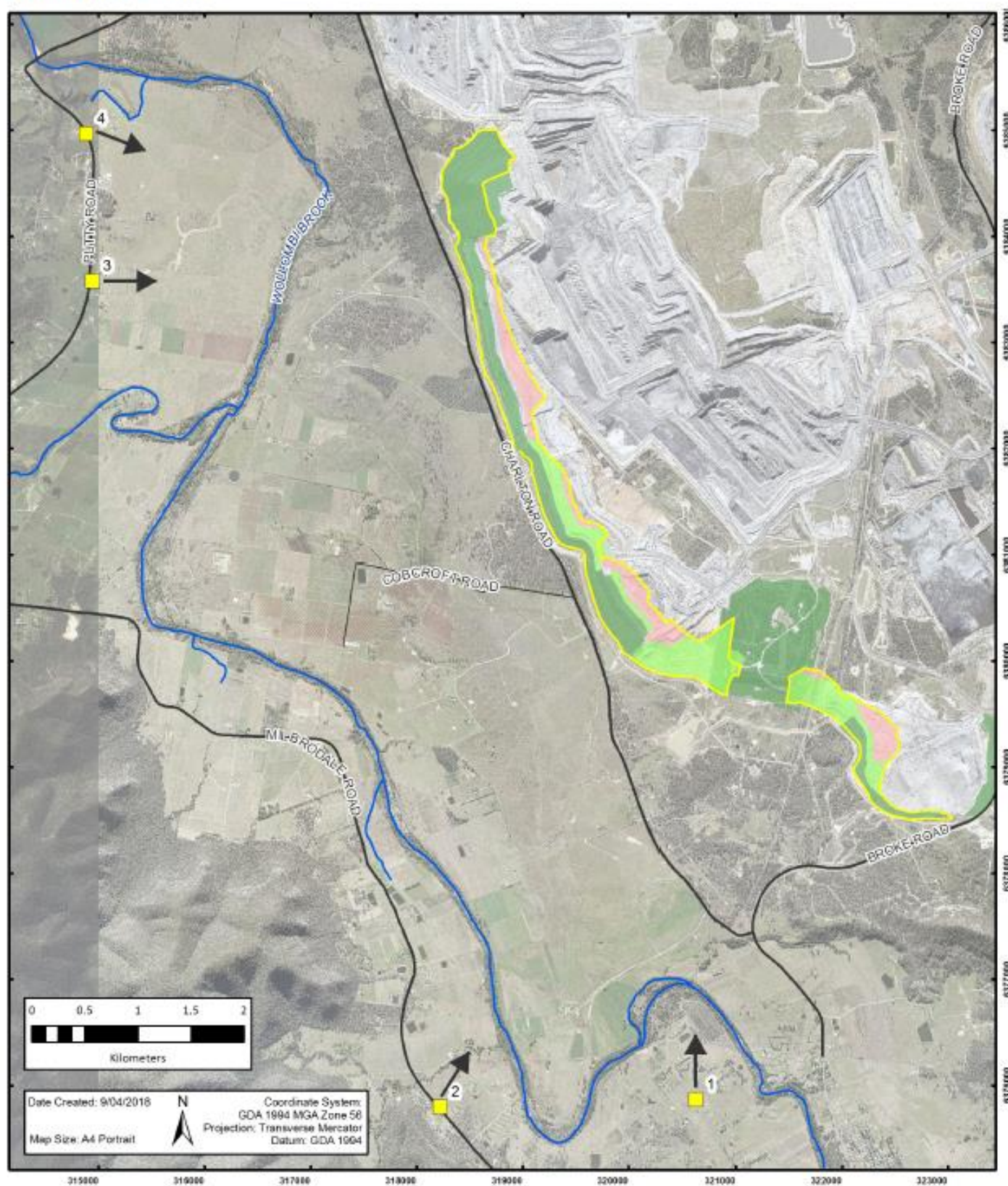


Legend

- 2019 Rehabilitation
- End of 2018 Rehabilitation

NB: The figure on the back shows where the pictures were photographed from.

Photo locations



Legend

- Visual Assessment Locations
- Noise and Visual Bund Outer Face
- 2018 Noise and Visual Bund Rehabilitation
- 2019 Noise and Visual Bund Rehabilitation
- Completed Noise and Visual Bund Rehabilitation

GLENCORE

Attachment 7- Bulga Coal May 2018 CCC meeting draft minutes

GLENCORE

Community Consultative Committee Meeting

9th May 2018

Site tour from Bulga Recreation Ground

Meeting opened: 9.00am

Meeting closed: 1.00pm

Declaration of pecuniary interest: None.

Present	Community representatives	Stewart Mitchell (SM)
		John Krey (JK)
	Bulga Coal	Ralph Northey (RN)
		Teegan Hayward (TH)
		Scott Wolfenden (SW)
Apologies	Chairperson	Godfrey Adamthwaite (GA)
	Community representative	Helen Sharrock (HS)

Site tour

RN Gave an overview of the site tour. The aim is to collectively view our operations from the community perspective, view the progress of the noise and visual bund and visit the proposed site of the Teaching and Keeping Place at our Wollombi Brook Conservation Area.

Turnbull Road, Bulga

RN Pointed out the North West corner and northern boundary of our open cut mine. It is at 150RL. There will be a delay in completing the outer face of the noise and visual bund by about 8 months.

SM We are happy to have vegetation and trees on the skyline.

RN Noted the trees are growing very well on the North West corner and we are looking at thinning the Hop Bush in some areas.

JK Referred to an aerial map / vegetation design from the original project consultation.

RN All the dumps will be rehabilitated to Central Hunter Grey Box - Ironbark Woodland or Central Hunter Ironbark - Spotted Gum - Grey Box Forest Endangered Ecological Community and some pasture.

Provide the vegetation plan to the committee **ACTION**

SM This area was open forest land when first discovered, about 2-3 trees per acre. It's not being returned to how it was when first discovered.

There was a general discussion about the plains and how the vegetation has been modified over the years due to logging and farming practices.

Putty Road, Bulga

RN Noted the rock raking and explained the process of shaping, ripping, rock piling.

SM This is the most visible part of your mine for the Putty Road residents.

RN The outer face of the bund would be dumped and rehabilitated by August next year and hopefully green by the end of next year – weather permitting.

Milbrodale Road, Broke

RN The section of the noise and visual bund that can be seen from this location is at 150RL and will have a knob on top which will be another 10-15 metres.

GLENCORE

Hill Street, Broke

RN The section of the noise and visual bund (Noise and Visual Bund Section 2 RL150) visible from this location has another 10m on top left to go. This will be another knob taking the height to 160RL and it will be rounded off.

Vere, Broke

RN There are 2 sets of Aboriginal grinding grooves on the Vere. The land is currently owned by the mine. This area is a potential offset for the proposed modification (Tailings relocation).

Charlton Road, Broke

RN This section of the noise and visual bund (Noise and Visual Bund Section 2 RL150) has 10 metres to go on top. This section will join up to the rehabilitated Southern Extension dump.

Wollombi Brook Conservation Area

RN Gave an overview of the conservation area – an aboriginal and ecological offset area. RN showed the proposed site for the Teaching and Keeping Place.

SM Asked if there was a native title claim on the crown road. RN: I don't believe so. The CCC members were driven through the offset to the waterhole at the Wollombi Brook.

The tour concluded with lunch at the Bulga Recreation Ground.

Confirmation of the minutes

The minutes from the previous meeting were not moved as SM was the only member present at the meeting.

Actions from the minutes 31/05/17

Item 1 *Provide an A3 printout of the locations of the noise monitors to CCC.* COMPLETED November 2017.

Item 2 *Include annual rainfall on the air quality rolling average graph and provide to CCC.* COMPLETED November 2017.

1. Annual Review

RN Gave a brief overview of the 2017 Annual Review.

JK Statement of compliance table –there were air quality exceedances 2-3 days in a row and there was no explanation?

RN The exceedances noted in the table at the front are described in detail in section 11 on page 117. There were exceedances on 11th and 13th January 2017 at the Mushroom Composting Facility. The PM10 assessment level is 91_{ug}/m³ averaged over a 13 hour period. These levels were established with the Technical Review Committee. In both instances there were strong north-westerly winds. Bulga Coal stopped overburden handling upwind of the Mushroom Composters on the 11th of January in response to Eastern Emplacement Area Air Quality Management Plan Trigger Action Response

GLENCORE

Procedure triggers. No actions were taken on the 13th of January as the Mushroom Composters had left site for the day.

JK Asked if the EPA monitors were operating on our site. RN: there are two continuous PM₁₀ units (E-Samplers) on the EPL boundary of our mine. RN said the best way to manage dust is to use water and drive to conditions.

JK Asked for an explanation of the graph (figure 8) on page 46. SW explained the graph shows hourly PM₁₀ levels from the air quality monitors located at the EPL boundary of our mine. The data is plotted according to the wind speed and wind direction occurring at the time. (i.e. data points that appear in the north-west direction were measured when the wind was from the north-west). The figures also show the location of Bulga complex. The figures show low PM₁₀ levels for all directions.

JK Asked if we monitor social impacts of our mine. RN said Glencore are just about to contact our stakeholders for the Community Perception Survey which is done every 3 years. There was a general discussion about how social impact assessments don't accurately measure impacts from mining projects on the broader community.

SM Asked for a copy of the Annual Review with a printed appendices. **ACTION**

SM Asked about the repairs to Charlton Road. RN noted it is the council's responsibility to repair the road.

SM Asked about the difference between the money spent in Broke and Bulga for the VPA. He noted there was a \$70K difference.

RN The VPA is for projects in Broke and Bulga to be split equitably, but not to the dollar. There was a discussion about how to foster community spirit in our villages.

SM Asked about the stock reserve project on the VPA project list. TH to send through the VPA Project spreadsheet. **ACTION**

2. General Business

TH Godfrey Adamthwaite has resigned from position of Chair of the Bulga Coal CCC, but willing to sit on the committee as the Singleton Council representative.

SM Is there another councillor who is willing to chair the meeting? TH explained each councillor was assigned to a CCC. RN noted that we have approval from the Department of Planning to continue running our CCC in the current format.

RN Asked if the members would like to have a Department of Planning appointed independent chair. They did not want an independent chairperson appointed to the Bulga Coal CCC. It was noted that Bulga Coal will chair the meetings until a replacement is found.

GLENCORE

RN Asked if there was another method of consulting with the community, rather than having a CCC. It was noted that the preference is to keep the CCC and advertise for more members. Bulga Coal will advertise for CCC members **ACTION**.

RN Noted that Bulga Coal will ask Department of Planning and Environment to remove the commitment from the Visual Impact Management Plan for a visual committee to meet twice per year.

Next meeting

Wednesday, 17th October 9am.

Item	Raised by	Action	Responsibility	Item No.
1	JK	Provide the vegetation plan to the committee	TS	Site tour
2	SM	Asked for a copy of the Annual Review with a printed appendices	TH	1. Annual Review
3	SM	Send through the VPA Project spreadsheet	TH	2. General Business
4	RN	Bulga Coal will advertise for CCC members	RN	2. General Business