



APPENDIX I: ABORIGINAL CULTURAL HERITAGE IMPACT ASSESSMENT





INSITE HERITAGE
PTY LTD

PO Box 198
Morisset NSW 2264
angela@insiteheritage.com.au
P 0412836031

Aboriginal Cultural Heritage Assessment Report

Proposed Deep Creek Quarry Limeburners Creek NSW.

March 2021

Table of Contents

1. Introduction and Project information	3
2. Legislative Context.....	7
3. Consultation.....	7
4. Summary of Background information	8
5. Cultural Heritage Values and Statement of Significance	8
6. Avoiding and Minimising Harm	8
7. Impact Assessment.....	10
8. Recommendations.....	10
8.1 Treatment of recovered Material.....	10
8.2 Long Term Storage of Artefacts.....	10
8.3 Salvage Reporting	10
8.4 Discovery of a previously Unknown Object.....	10
8.5 Discovery of Potential Human Remains	10
8.6 Aboriginal Cultural Heritage Awareness Induction Document	11
References	11
Appendix A Consultation Documentation	12
A.1 - Consultation Log.....	12
Appendix B – Newcastle Herald Advertisement.....	20
Appendix C – Archaeology Assessment.....	21

1. Introduction and Project information

A hard rock quarry is proposed at Deep Creek Road, Limeburners Creek, NSW (Figure 1). The proponent is Ironstone Developments Pty Ltd. The project, including an access road, stockpile areas, workshop and office infrastructure, is located on Lots:

Lot 472 DP1162208

Lot 48 DP 753178

Lot 551 DP 1238818

Lot 552 DP 1238818

The project is located in the Parish of Karuah, County of Gloucester and the Mid-North Coast LGA and Karuah Local Aboriginal Land Council boundaries (KLALC).

The elements of the project include:

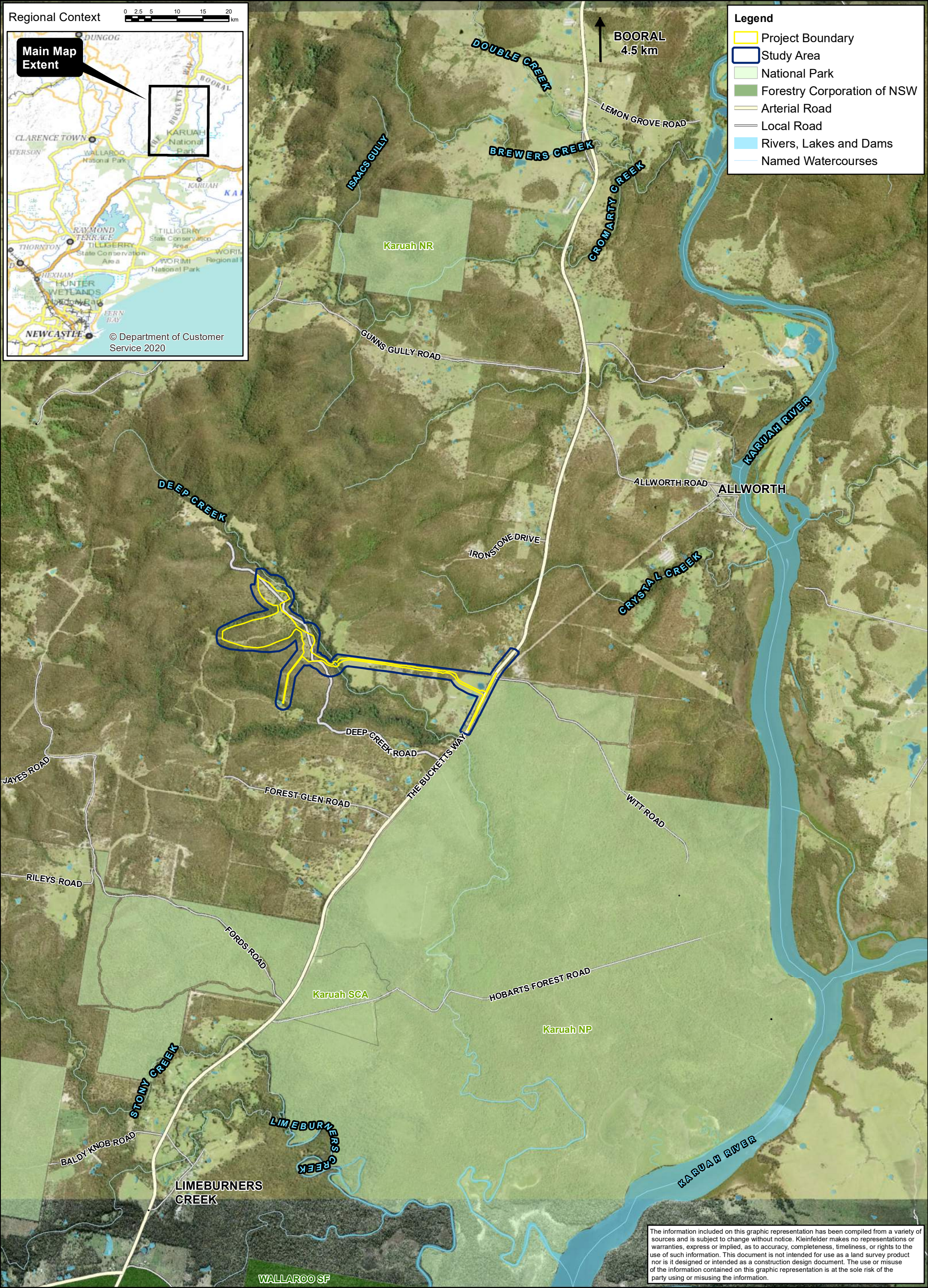
- A new intersection with the entrance to the proposed quarry to the west and Bucketts Way to the north and south.
- Construction of an access road with two creek crossings to the proposed quarry.
- An area of office, workshop and stockpiles.
- The extraction area and processing facilities.
- A stockpile area.
- Water supply.

Insite Heritage have been engaged by Kleinfelder Pty Ltd on behalf of the proponent to prepare an Aboriginal Cultural Heritage Report (ACHAR) for the development.

Table 1 Key aspects of the proposed Deep Creek Quarry Project.

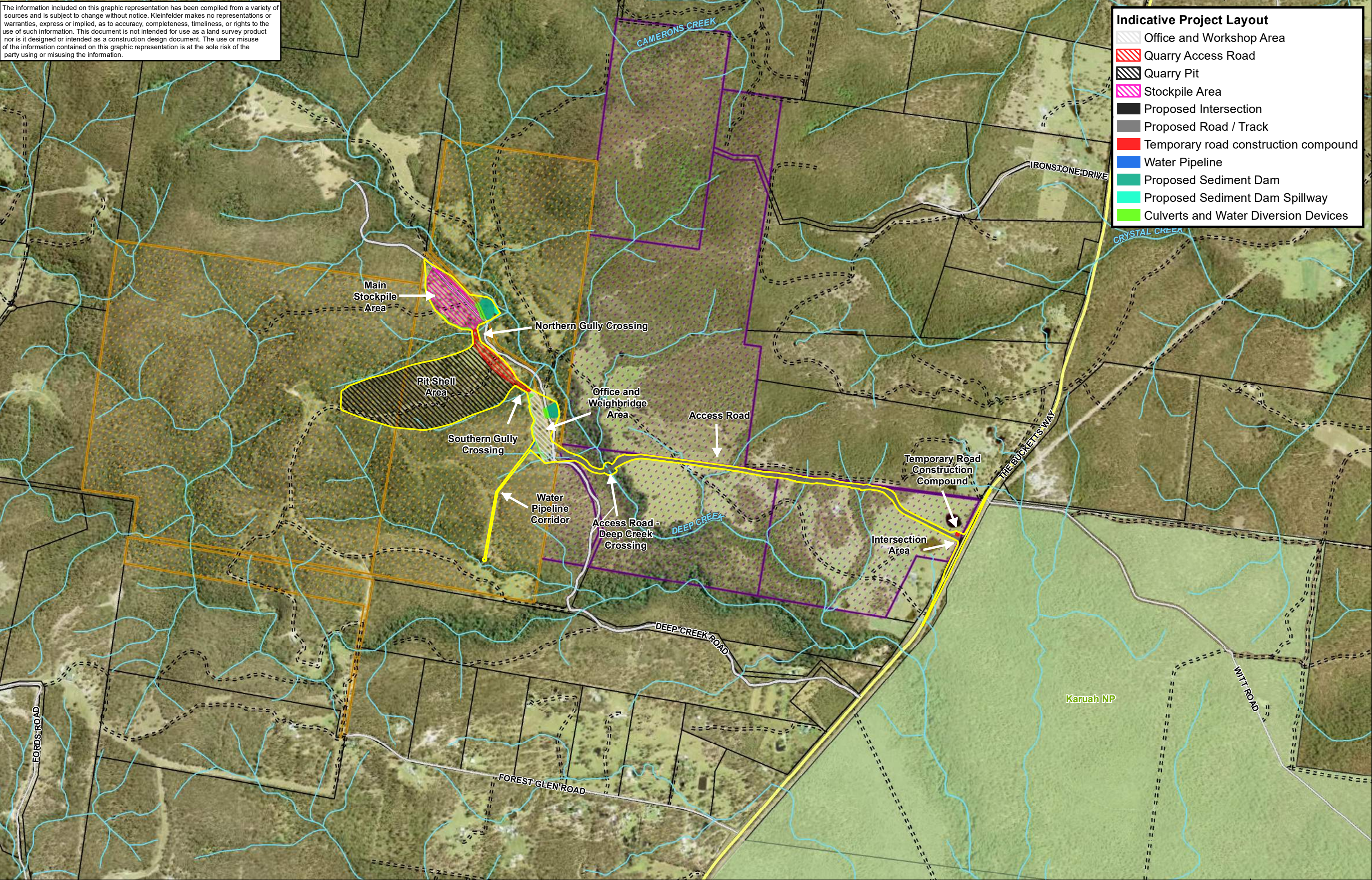
Aspect	Key Aspects of the Project
Key elements	Hard rock quarry extracting up to 500,000 tonnes per annum over a period of up to 30 years including a sealed access road, site office, workshop, weighbridge and stockpile area with associated water management infrastructure. Progressive rehabilitation of quarried land returning to pasture and native vegetation.
Location	279 Deep Creek Road, Limeburners Creek, NSW 2324, within the Mid-Coast local government area.
Property Titles	Lots 472/ DP1162208, 48/ DP753178, 551/ DP1238818, 552/ DP1238818, and Deep Creek Road and The Bucketts Way Road reserves at Limeburners Creek, Parish of Karuah, County of Gloucester, 279 Deep Creek Road, Limeburners Creek, NSW 2324.
Land Owner	Ironstone Developments Pty Ltd (access road corridor under option to Ironstone Developments from local private landholder).
Proponent	Ironstone Developments Pty Ltd.
Employment	Up to 10 full-time staff, with further support for the local and regional construction industry and associated haulage contractors.
Area	Total Project Area of approximately 30 hectares, comprising: <ul style="list-style-type: none">• 18 ha of quarry extraction area.• 16.5 ha in supporting infrastructure and roads. from a proponent land holding of approximately 308 hectares.
Elevations	Approximate elevations relevant to the Project are: <ul style="list-style-type: none">• Quarry located between 37 m to 115 m Australian Height Datum (AHD).• Workshop, office and stockpiles between 31 to 49 m AHD.• Access road between 22 to 59 m AHD. Quarry pit is sheltered to west by a ridge 125 m to 145 m AHD high and is above the nearby Deep Creek that has an elevation of 28 m AHD.

Aspect	Key Aspects of the Project
Project Life	Up to 30 years.
Extraction Rate	Maximum of 500,000 tonnes per annum, and maximum daily rate of 4,000 tonnes.
Resource and products	Approximately 13 Mt of rhyolite, arenite and weathered rock, crushed, screened and sized for various products including road construction and landscaping purposes. High proportion of product to meet Transport NSW specifications for high grip to improve road safety.
Operating Hours	<p>Construction of access, bunds, workshop and office:</p> <ul style="list-style-type: none"> • 7:00 am to 5:00 pm Monday to Friday. • 8:00 am to 1:00 pm Saturday. • No works on Sunday or public holidays. <p>Quarrying Operations:</p> <ul style="list-style-type: none"> • 7:00 am to 5:00 pm Monday to Friday. • 8:00 am to 1:00 pm Saturday. • No quarrying on Sunday or a Public Holiday. <p>Loading and dispatch of trucks:</p> <ul style="list-style-type: none"> • 6:00 am to 6:00 pm Monday to Friday. • 6:00 am to 1:00 pm Saturday. • No haulage on Sunday or a Public Holiday.
Transport Rate	<ul style="list-style-type: none"> • Up to 25 laden trucks per hour during operating hours. • Up to 10 vehicles of employees would be expected to arrive and depart within 1 hour of opening and closing.
Extraction	<ul style="list-style-type: none"> • Maximum extraction rate of 500,000 tonnes per annum. • Weathered rock stripped by bull dozer or excavator. • Blasting of hard rock. • Excavator and articulated trucks to feed mobile crusher and screen on pit floor. • Conveyors, articulated trucks, and excavator or front-end loader to distribute materials between processing and stockpile areas. • Front-end loader to load road registered haulage trucks for saleable products.
Support facilities and utilities	<ul style="list-style-type: none"> • Site office, weighbridge, workshop, stores, car parking. • New intersection on The Bucketts Way with private sealed access road. • Power supply from diesel generators and or connection to the mains network via a new underground electrical line adjacent to the access road. • Water supply sourced from rainwater, onsite dams, surface water runoff, groundwater seepage and imported potable water as needed.



<div><div><div></div><div></div><div></div><div></div><div></div><div></div><div></div><div></div><div></div><div></div><div></div><div></div><div></div><div></div><div></div><div></div><div></div><div></div><div></div><div></div><div></div><div></div><div></div><div></div><div></div><div></div><div></div><div></div><div></div><div></div><div></div><div></div><div></div><div></div><div></div><div></div><div></div><div></div><div></div><div></div><div></div><div></div><div></div><div></div><div></div><div></div><div></div><div></div><div></div><div></div><div></div><div></div><div></div><div></div><div></div><div></div><div></div><div></div><div></div><div></div><div></div><div></div><div></div><div></div><div></div><div></div><div></div><div></div><div></div><div></div><div></div><div></div><div></div><div></div><div></div><div></div><div></div><div></div><div></div><div></div><div></div><div></div><div></div><div></div><div></div><div></div><div></div><div></div><div></div><div></div><div></div><div></div><div></div><div></div><div></div><div></div><div></div><div></div><div></div><div></div><div></div><div></div><div></div><div></div><div></div><div></div><div></div><div></div><div></div><div></div><div></div><div></div><div></div><div></div><div></div><div></div><div></div><div></div><div></div><div></div><div></div><div></div><div></div><div></div><div></div><div></div><div></div><div></div><div></div><div></div><div></div><div></div><div></div><div></div><div></div><div></div><div></div><div></div><div></div><div></div><div></div><div></div><div></div><div></div><div></div><div></div><div></div><div></div><div></div><div></div><div></div><div></div><div></div><div></div><div></div><div></div><div></div><div></div><div></div><div></div><div></div><div></div><div></div><div></div><div></div><div></div><div></div><div></div><div></div><div></div><div></div><div></div><div></div><div></div><div></div><div></div><div></div><div></div><div></div><div></div><div></div><div></div><div></div><div></div><div></div><div></div><div></div><div></div><div></div><div></div><div></div><div></div><div></div><div></div><div></div><div></div><div></div><div></div><div></div><div></div><div></div><div></div><div></div><div></div><div></div><div></div><div></div><div></div><div></div><div></div><div></div><div></div><div></div><div></div><div></div><div></div><div></div><div></div><div></div><div></div><div></div><div></div><div></div><div></div><div></div><div></div><div></div><div></div><div></div><div></div><div></div><div></div><div></div><div></div><div></div><div></div><div></div><div></div><div></div><div></div><div></div><div></div><div></div><div></div><div></div><div></div><div></div><div></div><div></div><div></div><div></div><div></div><div></div><div></div><div></div><div></div><div></div><div></div><div></div><div></div><div></div><div></div><div></div><div></div><div></div><div></div><div></div><div></div><div></div><div></div><div></div><div></div><div></div><div></div><div></div><div></div><div></div><div></div><div></div><div></div><div></div><div></div><div></div><div></div><div></div><div></div><div></div><div></div><div></div><div></div><div></div><div></div><div></div><div></div><div></div><div></div><div></div><div></div><div></div><div></div><div></div><div></div><div></div><div></div><div></div><div></div><div></div><div></div><div></div><div></div><div></div><div></div><div></div><div></div><div></div><div></div><div></div><div></div><div></div><div></div><div></div><div></div><div></div><div></div><div></div><div></div><div></div><div></div><div></div><div></div><div></div><div></div><div></div><div></div><div></div><div></div><div></div><div></div><div></div><div></div><div></div><div></div><div></div><div></div><div></div><div></div><div></div><div></div><div></div><div></div><div></div><div></div><div></div><div></div><div></div><div></div><div></div><div></div><div></div><div></div><div></div><div></div><div></div><div></div><div></div><div></div><div></div><div></div><div></div><div></div><div></div><div></div><div></div><div></div><div></div><div></div><div></div><div></div><div></div><div></div><div></div><div></div><div></div><div></div><div></div><div></div><div></div><div></div><div></div><div></div><div></div><div></div><div></div><div></div><div></div><div></div><div></div><div></div><div></div><div></div><div></div><div></div><div></div><div></div><div></div><div></div><div></div><div></div><div></div><div></div><div></div><div></div><div></div><div></div><div></div><div></div><div></div><div></div><div></div><div></div><div></div><div></div><div></div><div></div><div></div><div></div><div></div><div></div><div></div><div></div><div></div><div></div><div></div><div></div><div></div><div></div><div></div><div></div><div></div><div></div><div></div><div></div><div></div><div></div><div></div><div></div><div></div><div></div><div></div><div></div><div></div><div></div><div></div><div></div><div></div><div></div><div></div><div></div><div></div><div></div><div></div><div></div><div></div><div></div><div></div><div></div><div></div><div></div><div></div><div></div><div></div><div></div><div></div><div></div><div></div><div></div><div></div><div></div><div></div><div></div><div></div><div></div><div></div><div></div><div></div><div></div><div></div><div></div><div></div><div></div><div></div><div></div><div></div><div></div><div></div><div></div><div></div><div></div><div></div><div></div><div></div><div></div><div></div><div></div><div></div><div></div><div></div><div></div><div></div><div></div><div></div><div></div><div></div><div></div><div></div><div></div><div></div><div></div><div></div><div></div><div></div><div></div><div></div><div></div><div></div><div></div><div></div><div></div><div></div><div></div><div></div><div></div><div></div><div></div><div></div><div></div><div></div><div></div><div></div><div></div><div></div><div></div><div></div><div></div><div></div><div></div><div></div><div></div><div></div><div></div><div></div><div></div><div></div><div></div><div></div><div></div><div></div><div></div><div></div><div></div><div></div><div></div><div></div><div></div><div></div><div></div><div></div><div></div><div></div><div></div><div></div><div></div><div></div><div></div><div></div><div></div><div></div><div></div><div></div><div></div><div></div><div></div><div></div><div></div><div></div><div></div><div></div><div></div><div></div><div></div><div></div><div></div><div></div><div></div><div></div><div></div><div></div><div></div><div></div><div></div><div></div><div></div><div></div><div></div><div></div><div></div><div></div><div></div><div></div><div></div><div></div><div></div><div></div><div></div><div></div><div></div><div></div><div></div><div></div><div></div><div></div><div></div><div></div><div></div><div></div><div></div><div></div><div></div><div></div><div></div><div></div><div></div><div></div><div></div><div></div><div></div><div></div><div></div><div></div><div></div><div></div><div></div><div></div><div></div><div></div><div></div><div></div><div></div><div></div><div></div><div></div><div></div><div></div><div></div><div></div><div></div><div></div><div></div><div></div><div></div><div></div><div></div><div></div><div></div><div></div><div></div><div></div><div></div><div></div><div></div><div></div><div></div><div></div><div></div><div></div><div></div><div></div><div></div><div></div><div></div><div></div><div></div><div></div><div></div><div></div><div></div><div></div><div></div><div></div><div></div><div></div><div></div><div></div><div></div><div></div><div></div><div></div><div></div><div></div><div></div><div></div><div></div><div></div><div></div><div></div><div></div><div></div><div></div><div></div><div></div><div></div><div></div><div></div><div></div><div></div><div></div><div></div><div></div><div></div><div></div><div></div><div></div><div></div><div></div><div></div><div></div><div></div><div></div><div></div><div></div><div></div><div></div><div></div><div></div><div></div><div></div><div></div><div></div><div></div><div></div><div></div><div></div><div></div><div></div><div></div><div></div><div></div><div></div><div></div><div></div><div></div><div></div><div></div><div></div><div></div><div></div><div></div><div></div><div></div><div></div><div></div><div></div><div></div><div></div><div></div><div></div><div></div><div></div><div></div><div></div><div></div><div></div><div></div><div></div><div></div><div></div><div></div><div></div><div></div><div></div><div></div><div></div><div></div><div></div><div></div><div></div><div></div><div></div><div></div><div></div><div></div><div></div><div></div><div></div><div></div><div></div><div></div><div></div><div></div><div></div><div></div><div></div><div></div><div></div><div></div><div></div><div></div><div></div><div></div><div></div><div></div><div></div><div></div><div></div><div></div><div></div><div></div><div></div><div></div><div></div><div></div><div></div><div></div><div></div><div></div><div></div><div></div><div></div><div></div><div></div><div></div><div></div><div></div><div></div><div></div><div></div><div></div><div></div><div></div><div></div><div></div><div></div><div></div><div></div><div></div><div></div><div></div><div></div><div></div><div></div><div></div><div></div><div></div><div></div><div></div><div></div><div></div><div></div><div></div><div></div><div></div><div></div><div></div><div></div><div></div><div></div><div></div><div></div><div></div><div></div><div></div><div></div><div></div><div></div><div></div><div></div><div></div><div></div><div></div><div></div><div></div><div></div><div></div><div></div><div></div><div></div><div></div><div></div><div></div><div></div><div></div><div></div><div></div><div></div><div></div><div></div><div></div><div></div><div></div><div></div><div></div><div></div><div></div><div></div><div></div><div></div><div></div><div></div><div></div><div></div><div></div><div></div><div></div><div></div><div></div><div></div><div></div><div></div><div></div><div></div><div></div><div></div><div></div><div></div><div></div><div></div><div></div><div></div><div></div><div></div><div></div><div></div><div></div><div></div><div></div><div></div><div></div><div></div><div></div><div></div><div></div><div></div><div></div><div></div><div></div><div></div><div></div><div></div><div></div><div></div><div></div><div></div><div></div><div></div><div></div><div></div><div></div><div></div><div></div><div></div><div></div><div></div><div></div><div></div><div></div><div></div><div></div><div></div><div></div><div></div><div></div><div></div><div></div><div></div><div></div><div></div><div></div><div></div><div></div><div></div><div></div><div></div><div></div><div></div><div></div><div></div><div></div><div></div><div></div><div></div><div></div><div></div><div></div><div></div><div></div><div></div><div></div><div></div><div></div><div></div><div></div><div></div><div></div><div></div><div></div><div></div><div></div><div></div><div></div><div></div><div></div><div></div><div></div><div></div><div></div><div></div><div></div><div></div><div></div><div></div><div></div><div></div><div></div><div></div><div></div><div></div><div></div><div></div><div></div><div></div><div></div><div></div><div></div><div></div><div></div><div></div><div></div><div></div><div></div><div></div><div></div><div></div><div></div><div></div><div></div><div></div><div></div><div></div><div></div><div></div><div></div><div></div><div></div><div></div><div></div><div></div><div></div><div></div><div></div><div></div><div></div><div></div><div></div><div></div><div></div><div></div><div></div><div></div><div></div><div></div><div></div><div></div><div></div><div></div><div></div><div></div><div></div><div></div><div></div><div></div><div></div><div></div><div></div><div></div><div></div><div></div><div></div><div></div><div></div><div></div><div></div><div></div><div></div><div></div><div></div><div></div><div></div><div></div><div></div><div></div><div></div><div></div><div></div><div></div><div></div><div></div><div></div><div></div><div></div><div></div><div></div><div></div><div></div><div></div><div></div><div></div><div></div><div></div><div></div><div></div><div></div><div></div><div></div><div></div><div></div><div></div><div></div><div></div><div></div><div></div><div></div><div></div><div></div><div></div><div></div><div></div><div></div><div></div><div></div><div></div><div></div><div></div><div></div><div></div><div></div><div></div><div></div><div></div><div></div><div></div><div></div><div></div><div></div><div></div><div></div><div></div><div></div><div></div><div></div><div></div><div></div><div></div><div></div><div></div><div></div><div></div><div></div><div></div><div></div><div></div><div></div><div></div><div></div><div></div><div></div><div></div><div></div><div></div><div></div><div></div><div></div><div></div><div></div><div></div><div></div><div></div><div></div><div></div><div></div><div></div><div></div><div></div><div></div><div></div><div></div><div></div><div></div><div></div><div></div><div></div><div></div><div></div><div></div><div></div><div></div><div></div><div></div><div></div><div></div><div></div><div></div><div></div><div></div><div></div><div></div><div></div><div></div><div></div><div></div><div></div><div></div><div></div><div></div><div></div><div></div><div></div><div></div><div></div><div></div><div></div><div></div><div></div><div></div><div></div><div></div><div></div><div></div><div></div><div></div><div></div><div></div><div></div><div></div><div></div><div></div><div></div><div></div><div></div><div></div><div></div><div></div><div></div><div></div><div></div><div></div><div></div><div></div><div></div><div></div><div></div><div></div><div></div><div></div><div></div><div></div><div></div><div></div><div></div><div></div><div></div><div></div><div></div><div></div><div></div><div></div><div></div><div></div><div></div><div></div><div></div><div></div><div></div><div></div><div></div><div></div><div></div><div></div><div></div><div></div><div></div><div></div><div></div><div></div><div></div><div></div><div></div><div></div><div></div><div></div><div></div><div></div><div></div><div></div><div></div><div></div><div></div><div></div><div></div><div></div><div></div><div></div><div></div><div></div><div></div><div></div><div></div><div></div><div></div><div></div><div></div><div></div><div></div><div></div><div></div><div></div><div></div><div></div><div></div><div></div><div></div><div></div><div></div><div></div><div></div><div></div><div></div><div></div><div></div><div></div><div></div><div></div><div></div><div></div><div></div><div></div><div></div><div></div><div></div><div></div><div></div><</div></div>	
--	--

The information included on this graphic representation has been compiled from a variety of sources and is subject to change without notice. Kleinfelder makes no representations or warranties, express or implied, as to accuracy, completeness, timeliness, or rights to the use of such information. This document is not intended for use as a land survey product nor is it designed or intended as a construction design document. The use or misuse of the information contained on this graphic representation is at the sole risk of the party using or misusing the information.



Legend <div><div><div><div></div><div>Project Boundary</div></div><div><div></div><div>Ironstone Development Pty Ltd Owned</div></div><div><div></div><div>Agreement with Ironstone Development Pty Ltd</div></div><div><div></div><div>Lot Boundaries</div></div><div><div></div><div>National Park</div></div></div><div><div><div></div><div>Named Watercourse</div></div><div><div></div><div>Unnamed Watercourse</div></div><div><div></div><div>Arterial Road</div></div><div><div></div><div>Local Road</div></div><div><div></div><div>Track</div></div></div></div>	<div><div><div>0</div><div>0.125</div><div>0.25</div><div>0.5</div><div>0.75</div></div><div>km</div></div> <div><div><div><div></div><div>KLEINFELDER</div><div>Bright People. Right Solutions.</div></div><div><div>www.kleinfelder.com</div></div></div><div><div></div><div>N</div></div></div>	<div><div><div>PROJECT REFERENCE: 20203112</div><div>DATE DRAWN: 3/06/2021 11:06 Version 1</div><div>DRAWN BY: BDeane</div><div>DATA SOURCE: NSW DFSI - 2018 NSW DPIE - 2020</div></div></div>	<div><div><div>Proposed Deep Creek Quarry</div><div>Ironstone Developments Pty Ltd Deep Creek Quarry The Bucketts Way, Limeburners Creek, NSW</div></div></div>	<div><div>FIGURE:</div><div>2</div></div>
--	---	--	--	--

2. Legislative Context

The project will be determined under Development Consent pursuant to Part 4, Division 4.7 of the EP&A Act as State Significant Development (SSD) as declared by the State Environmental Planning Policy (State and Regional Development) 2011 (NSW).

Pursuant to Section 4.41 (d) of the EP&A Act an “Aboriginal heritage impact permit under section 90 of the National Parks and Wildlife Act 1974” is not required.

The Environmental Planning and Assessment Act 1979 is overseen by the Department of Planning and Environment and requires the consideration of Historic and Aboriginal heritage as part of the development approval process.

The National Parks and Wildlife Act 1974 (as amended)

The NPW Act provides statutory protection for all material evidence of Aboriginal occupation of NSW. The objects of the act, as outlined in Section 2A include;

(b) the conservation of objects, places or features (including biological diversity) of cultural value within the landscape, including, but not limited to:

(i) places, objects and features of significance to Aboriginal people

An Aboriginal object means any deposit, object or material evidence (not being a handicraft made for sale) relating to the Aboriginal habitation of the area that comprises New South Wales, being habitation before or concurrent with (or both) the occupation of that area by persons of non-Aboriginal extraction, and includes Aboriginal remains.

It is an offence to harm an Aboriginal object, or declared Aboriginal place, without first obtaining approval from the Director General of the Department of Premier and Cabinet.

The Environmental Planning and Assessment Act 1979 (as amended)

The EP&A Act states that environmental impacts are to be considered in land use planning. The term ‘environmental impacts’ specifically relates to Aboriginal heritage in three parts of the Act:

Part IV of the Act determines the way in which consent authorities make decisions regarding development applications. Section 79C (b) states that the impact of development on the natural or built environment should be considered before consent is granted.

3. Consultation

Insite Heritage were commissioned to carry out consultation in compliance to Regulation 80C of the NPW Act for the Deep Creek Quarry project.

Consultation for the project was carried out as follows;

Stage 1 – Requests for the identification of potential interested Aboriginal persons or groups relevant to the project location. Sent to Heritage NSW, Local Land Services, Council, Local Aboriginal Land Council, Native Title services, Office of the Register Aboriginal Owners (Appendix A).

Advertisement in the Newcastle Herald on the 14th August 2020 inviting registrations of interest—closed the 29th August 2020 (Appendix B)

Stage 2 – Project information and invitation to register sent to all parties identified in Stage 1.

Compile registrations – 14 day registration period (Appendix C).

Notify Heritage NSW and Karuah LALC with a list of registrants (Appendix D).

Registrations closed 22nd September 2020.

Stage 3 – Prepare a draft assessment methodology. Send a copy of the draft methodology to all registrants. Responses close on the 30th October 2020 (Appendix E).

Stage 4 – Field assessment over 2.5 days 9th to 11th of November.

Stage 5 - The draft ACHAR was provided to all RAPs for a 28 day review period prior to finalisation.

Finalisation is anticipated by the 24th December 2020.

An opportunity to visit the study was offered during the ACHAR review period.

4. Summary of Background information

The site of proposed quarry has been partially cleared for grazing. The study area comprises narrow valley with the quarry and associated infrastructure to be located on the western side of Deep Creek. An access road is proposed to connect the quarry with The Bucketts Way to the east. The access road includes a crossing of Deep Creek and an un-named tributary.

The study area has not been the subject of previous cultural heritage assessment and there are no AHIMS sites within the study area.

5. Cultural Heritage Values and Statement of Significance

The consultation process has not identified any specific cultural values associated with the study area.

The archaeological assessment located isolated finds in four of eleven square metre test pits excavated on the site. The surface survey of the study area did not locate any cultural material within the study area.

The cultural significance of the study area is moderate as an area containing evidence of visitation in the course of resource gathering.

The scientific significance of the study area is low, due to low density, not complex sites resulting from peripheral occupation.

6. Avoiding and Minimising Harm

The access road and the detention basins will impact on the low- density sites found by test pits. Adjusting the position of the access road or detention basins is unlikely to result in less harm, as the predicted distribution of sites in those areas is a continuum of low density 'background scatter'.

To minimise the impact of the harm it is recommended that the artefacts located in the test pits are retrieved and reburied on site in an area that can be avoided. The area would be selected in consultation with the community.

The client has discussed an interpretation opportunity to inform those drivers etc, accessing the quarry, of the Aboriginal history of the site. Any interpretation devices shall be developed in consultation with the RAP's on the project.



Figure 3 Test pit locations - Deep Creek Quarry

7. Impact Assessment

The project will impact the four isolated finds located by subsurface testing. The impact to these artefacts will require an AHIP prior to construction.

The project will impact on the following objects.

Artefact details:

Creek crossing TP2 – broken flake, distal, dark grey with more recent termination tip damage. Cortex developed over the break, 38x31x11 mm. GDA 56H - 398332E 6397548N

Detention basin 1 – located below the main stockpile **TP2**. Broken flake distal, tip snap, 120x80x30. Left margin usewear. Located at 180mm below the surface in the wall of quad B. Pink silcrete with fine cortex developed on flake surface GDA 56H 397793E 6398223N

TP3 grey fine grained IMT brown, usewear on the mid right margin, inclusion on the left margin. 24x22x3 mm. GDA 56H 397793E 6398211N

Detention basin 2 TP1 – flake, 55x45x13mm, quartzite (sugary appearance), distal point damage, cortex on the platform 20x10mm, pale grey. GDA 56H 398065E 6397782N.

8. Recommendations

8.1 Treatment of recovered Material.

Discussions in the field with RAPs present recommended that the artefacts to be recovered are reburied in a location which in can be protected in perpetuity.

8.2 Long Term Storage of Artefacts

As mentioned above the community recommendation is for re-burial on site.

8.3 Salvage Reporting

Once the artefacts have been retrieved and reburied AHIMS will be updated with an impact recording and new location details.

8.4 Discovery of a previously Unknown Object.

In the event of discovery of a previously unknown object in the course of construction works associated with the development the following procedure to be followed:

- Ground disturbance works in vicinity of the object to cease.
- Secure the area.
- Notify the RAPs and an archaeologist. Artefact to be collected (under the AHIP) and removed to the long term storage location.
- If the archaeologist considers the object/feature to be significant (e.g. a hearth), DPIE to be notified and a methodology for salvage to be developed with DPIE and the RAPs.

8.5 Discovery of Potential Human Remains

In the event that any potential human skeletal remains are uncovered during works, all work in the immediate area of the remains will halt immediately. The incident will be immediately reported to the NSW Police, Heritage NSW and the RAPs.

No action is to be undertaken until the NSW Police provide written notification to the Proponent. If the skeletal remains are identified as Aboriginal, the Proponent shall contact DPC and project RAPs to determine suitable salvage methodologies. No works are to continue until Heritage NSW provides written notification to the proponent.

8.6 Aboriginal Cultural Heritage Awareness Induction Document

Contractors undertaking earthworks associated with the project will be provided with an Aboriginal Cultural Heritage Awareness Induction document, to be undertaken in conjunction with site induction procedures. The document will outline protocols for discovery of previously identified Aboriginal objects and information to aid in the identification of Aboriginal objects.

References

The Burra Charter: The Australia ICOMOS Charter for Places of Cultural Significance, 2013.

Moore, M. 2000 Technology of Hunter Valley microlith assemblages, New South Wales. In Australian Archaeology No:51, 2000.

Mulvaney, J. and Kamminga, J. 1999 A Prehistory of Australia. Allen and Unwin Sydney.

Office of Environment & Heritage 2010 Code of Practice for Archaeological Investigation of Aboriginal Objects in New South Wales

Office of Environment & Heritage 2010 Aboriginal cultural heritage consultation requirements for proponents 2010.

Appendix A Consultation Documentation

A.1 - Consultation Log

Date	Organisation/Action
11.8.20	Letter to Local Land Services requesting details of Aboriginal parties who may have an interest in the project
11.8.20	Search form submitted to National Native Title Services search
11.8.20	Letter requesting details of Aboriginal parties who may have an interest in the project sent to Native Title Services Corp
11.8.20	Letter to Karuah LALC seeking expression of interest and details of parties who may have an interest in the project
11.8.20	Letter to DPC requesting details of Aboriginal parties who may have an interest in the project
11.8.20	Letter to the Office of the Registrar
11.8.20	letter to Mid Coast Council requesting details of Aboriginal parties who may have an interest in the project
13.8.20	Response received from ORALRA
14.8.20	Response received from DBC with list of parties to contact regarding the project
16.8.20	Response received from Mid Coast Council
14.8.20	Advert placed in the Newcastle Herald
7.9.20	Letters outlining project and invitations to register interest sent to the following parties provided by DBC via email and post where email not provided. 14 day registration period. Additional letters to returned emails circulated 22 nd Sept 20
7.9.20-23.9.20	Registration of interest from parties identified in the above processes via email and telephone
23.9.20	Letters sent to DPC and KLALC with list of registered parties.
1.10.20	Draft ACHA methodology sent by email to all RAPs 28 day review and comment period (30.10.20)
13.10.2020	Tried to contact David Feeney as KLALC had been difficult to contact. Phone disconnected.
27.10.20	Testing notification sent to BCD
6.11.2020	Made contact with Travis acting CEO KLALC – organised field workers. Nu- Run-Gee also contacted for field workers
23.11.20	Circulation of draft ACHAR to RAPS for review and comment 28 day review period
23.12.20	Close of ACHAR review period.
26.02.21	Follow up call to Nur-Run-Gee and KLALC to receive a review response as these RAPs were involved in the field work. KLALC not available
26.02.21	Nur Run Gee emailed a response agreeing with community collection methodology and recommendations and culture awareness training for contractors.
11.03.21	Follow up call to KLALC and made contact with Diane Bell the new CEO of KLALC
15.03.21	Sent KLALC another copy of the ACHAR and a brief overview of the fieldwork results and recommendations for review at board meeting
24.03.21	Follow up call to KLALC – board meeting delayed till this week
29.03.21	Follow up call to KLALC – Diane is going to visit Colleen Perry (fieldwork participant) to check on agreement with recommendations
31.03.21	Spoke with Diane whom referred me on to Colleen Perry – tried Colleen but no answer
13.04.21	Colleen returned call - discussed community salvage recommendation in the area of basins and creek crossing. Collecting known objects and collecting via grader scrape over basin area. Colleen reiterated that she supported this option as discussed in the field. Artefacts to be reburied on site. 2.58pm 15min

A.2 Stage 1 emails out – Example notification and emails



INSITE HERITAGE
PTY LTD

PO Box 198 Morisset NSW 2267
admin@insiteheritage.com.au
ABN 70 110 716 080

11th August 2020

Karuah Local Aboriginal Land Council
Att: CEO
Mustons Ave Karuah
admin@karuahaboriginal.com.au

Dear Sir or Madam

**Re: Preparation of an Aboriginal Cultural Heritage Assessment– State significant project
Limeburners Creek NSW**

Insite Heritage Pty Ltd have been commissioned by Wedgetail Project Consulting on behalf of Woodbury Civil Pty Ltd (PO Box 2185 Green Hills NSW 2323) to prepare an Aboriginal Cultural Heritage Assessment for a proposed hard rock quarry to be known as Deep Creek Quarry, off Bucketts Way, Limeburners Creek NSW.

The proposed hard-rock quarry, associated facilities, access roads and intersections are located within Lot 47 of DP 753178, Lot 48 of DP 753178, Lot 551 of DP 1238818, Lot 552 of DP 1238818, Crown road reserve adjoining these lots and The Bucketts Way Road reserve at 279 Deep Creek Road, Limeburners Creek within the Parish of Karuah, County of Gloucester in the Mid-North Coast local government area of New South Wales in the Karuah Local Aboriginal Land Council area.

A locality plan of the subject site is provided below.

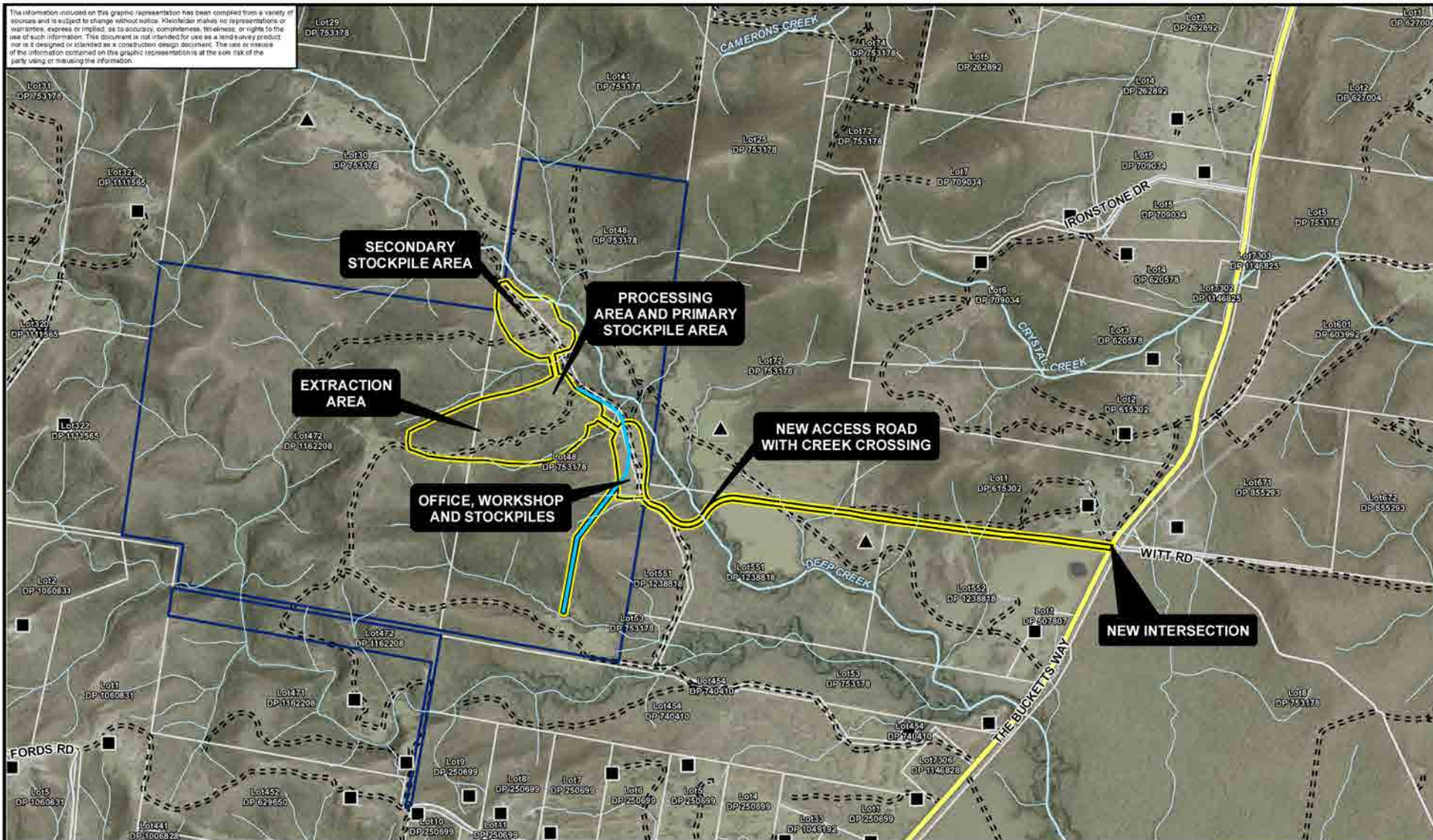
We would appreciate if you could please provide us with a contact list of any Aboriginal persons or groups registered with Karuah LALC who may hold cultural knowledge relevant to determining the significance of Aboriginal objects and/or places in the area of the development.

Please do not hesitate to contact Insite Heritage if you have any queries

Yours sincerely
Insite Heritage Pty Ltd

Angela Besant
Archaeologist
M 0412836031
angela@insiteheritage.com.au

The information included on this graphic representation has been compiled from a variety of sources and is subject to change without notice. Kleinfelder makes no representations or warranties, express or implied, as to accuracy, completeness, timeliness, or rights to the use of such information. This document is not intended for use as a land survey product nor is it designed or intended as a construction design document. The use or misuse of the information contained on this graphic representation is at the sole risk of the party using or misusing the information.



Legend		
 Subject Land	— Named Watercourse	 Existing Receptor
 Development Footprint	--- Unnamed Watercourse	 Potential Future Receptor
— Water Supply Pipeline		— Arterial Road
		— Local Road
		--- Track
		 Lot Boundaries

0 0.1 0.2 0.4 0.6 0.8 1 km

KLEINFELDER
Bright People. Right Solutions.
www.kleinfelder.com

PROJECT REFERENCE: 20151815
DATE DRAWN: 22/11/2019 10:21 Version 2
DRAWN BY: JBerry
DATA SOURCE: NSW DFSI - 2019

Concept Quarry Layout
Woodbury Civil Pty Ltd Deep Creek Quarry Bucketts Way, Limeburners Creek, NSW

FIGURE: 1

From: angela@insiteheritage.com.au
To: ["admin@karuahaboriginal.com.au"](mailto:admin@karuahaboriginal.com.au)
Subject: Deep Creek Quarry Limeburners creek
Date: Tuesday, 11 August 2020 11:48:00 AM
Attachments: [KLALC Deep Creek Quarry .pdf](#)
[image001.png](#)

Please find attached a request for contact details of Aboriginal persons or groups whom may have cultural knowledge regarding a proposed hard rock quarry
Please don't hesitate to give me a call with any queries
Thanks

Angela Besant Director
Monday to Thursday



PO Box 198 Morisset NSW 2264
M 0412836031

From: angela@insiteheritage.com.au
To: council@midcoast.nsw.gov.au; [MidCoast Council](#)
Subject: Proposed hard rock quarry Limburners creek NSW
Date: Tuesday, 11 August 2020 11:58:00 AM
Attachments: [Mid north Council Deep Creek Quarry.pdf](#)
[image001.png](#)

Please find attached a request for contact details of Aboriginal persons or groups whom may have cultural knowledge regarding a proposed hard rock quarry
Please don't hesitate to give me a call with any queries
Thanks

Angela Besant Director
Monday to Thursday



PO Box 198 Morisset NSW 2264
M 0412836031

From: angela@insiteheritage.com.au
To: ["heritagemailbox@environment.nsw.gov.au"](mailto:heritagemailbox@environment.nsw.gov.au)
Subject: Proposed hard rock quarry Limeburners Creek NSW
Date: Tuesday, 11 August 2020 12:05:00 PM
Attachments: [DPIE_Deep Creek Quarry.pdf](#)
[image001.png](#)

Please find attached a request for contact details of Aboriginal persons or groups whom may have cultural knowledge regarding a proposed hard rock quarry at Limeburners Creek
Please don't hesitate to give me a call with any queries
Thanks

Angela Besant Director
Monday to Thursday



PO Box 198 Morisset NSW 2264
M 0412836031

From: angela@insiteheritage.com.au
To: ["admin.hunter@lls.nsw.gov.au"](mailto:admin.hunter@lls.nsw.gov.au); [LLS Admin Hunter Mailbox](#)
Subject: Proposed hard rock quarry Limeburners Creek NSW
Date: Tuesday, 11 August 2020 12:02:00 PM
Attachments: [LLS Deep Creek quarry.pdf](#)
[image001.png](#)

Please find attached a request for contact details of Aboriginal persons or groups whom may have cultural knowledge regarding a proposed hard rock quarry
Please don't hesitate to give me a call with any queries
Thanks

Angela Besant Director
Monday to Thursday



PO Box 198 Morisset NSW 2264
M 0412836031

From: angela@insiteheritage.com.au
To: ["nswenquiries@nntt.gov.au"](mailto:nswenquiries@nntt.gov.au)
Subject: Proposed hard rock quarry Limeburners Creek NSW
Date: Tuesday, 11 August 2020 11:56:00 AM
Attachments: [NNTTsearchrequest.pdf](#)
[image001.png](#)

Please find attached a request for contact details of Aboriginal persons or groups whom may have cultural knowledge regarding a proposed hard rock quarry
Please don't hesitate to give me a call with any queries
Thanks

Angela Besant Director
Monday to Thursday



PO Box 198 Morisset NSW 2264
M 0412836031

From: angela@insiteheritage.com.au
To: ["adminofficer@oralra.nsw.gov.au"; Admin officer, AANSW](mailto:adminofficer@oralra.nsw.gov.au)
Subject: proposed quarry Limeburners creek
Date: Tuesday, 11 August 2020 11:52:00 AM
Attachments: [OoR_Deep_Creek_Quarry.pdf](#)
[image001.png](#)

Please find attached a request for contact details of Aboriginal persons or groups whom may have cultural knowledge regarding a proposed hard rock quarry
Please don't hesitate to give me a call with any queries
Thanks

Angela Besant Director
Monday to Thursday



PO Box 198 Morisset NSW 2264
M 0412836031

From: angela@insiteheritage.com.au
To: ["information@ntscorp.com.au"](mailto:information@ntscorp.com.au)
Subject: proposed rock quarry Limeburners Creek NSW
Date: Tuesday, 11 August 2020 11:54:00 AM
Attachments: [NTSCorp_Deep_Creek_Quarry.pdf](#)
[image001.png](#)

Please find attached a request for contact details of Aboriginal persons or groups whom may have cultural knowledge regarding a proposed hard rock quarry
Please don't hesitate to give me a call with any queries
Thanks

Angela Besant Director
Monday to Thursday



PO Box 198 Morisset NSW 2264
M 0412836031

From: angela@insiteheritage.com.au
To: nswenquiries@nntt.gov.au
Subject: FW: Proposed hard rock quarry Limeburners Creek NSW
Date: Tuesday, 11 August 2020 3:03:41 PM
Attachments: [image001.png](#)
[NNTTsearchrequest.pdf](#)

Please note that there was an error in the identity of the proponent
The proponent is Ironstone Developments not Woodbury Civil Pty Ltd
The contact details remain the same
Thankyou

Angela Besant Director
Monday to Thursday



INSITE HERITAGE
PTY LTD

PO Box 198 Morisset NSW 2264
M 0412836031

From: angela@insiteheritage.com.au <angela@insiteheritage.com.au>
Sent: Tuesday, 11 August 2020 11:57 AM
To: 'nswenquiries@nntt.gov.au' <nswenquiries@nntt.gov.au>
Subject: Proposed hard rock quarry Limeburners Creek NSW

Please find attached a request for contact details of Aboriginal persons or groups whom may have cultural knowledge regarding a proposed hard rock quarry
Please don't hesitate to give me a call with any queries
Thanks

Angela Besant Director
Monday to Thursday



INSITE HERITAGE
PTY LTD

PO Box 198 Morisset NSW 2264
M 0412836031

A.3 Stage 2 Invitation to register email out

From: angela@insiteheritage.com.au
To: cazadirect@live.com; corroboreecorp@bigpond.com; deckavale@hotmail.com; didgengunawalclan@yahoo.com.au; tamatthews10@hotmail.com; karuahindigenous@outlook.com; wonn1sites@gmail.com; doowakee@gmail.com; lowerhunterai@gmail.com; bunyipmick50@gmail.com; murrabidgeemullangari@yahoo.com.au; murroomainc1@gmail.com; warren@yarnteen.com.au; lennie.anderson011@bigpond.com; deshickey@bigpond.com; widescope.group@live.com; yinarculturalservices@bigpond.com; dontminemeay@gmail.com; leedavison114@yahoo.com.au; kevin.duncan@bigpond.com; bobsam1@bigpondnet.au
Cc: jberry@wedgetail.com.au
Subject: Deep Creek Quarry Limeburners Creek
Date: Monday, 7 September 2020 10:17:00 AM
Attachments: [Invitation to register Deep Creek Quarry .pdf](#)
[image003.png](#)

Please find attached an invitation to register for the cultural heritage assessment of the proposed Deep Creek Quarry and associated facilities Limeburners Ck, Karuah LALC area and Mid-North Coast LGA.

Please register by return email by the 22nd Sept 2020

Any queries please don't hesitate to contact Angela Besant

Thanks

Angela Besant Director

Monday to Thursday



INSITE HERITAGE
PTY LTD

PO Box 198 Morisset NSW 2264
M 0412836031



INSITE HERITAGE
PTY LTD

PO Box 198 Morisset NSW 2267
admin@insiteheritage.com.au
ABN 70 110 716 080

7th September 2020

Dear Sir or Madam

Re: Preparation of an Aboriginal Cultural Heritage Assessment– State significant project Limeburners Creek NSW

Insite Heritage Pty Ltd have been commissioned by Wedgetail Project Consulting on behalf of Ironstone Developments Pty Ltd (PO Box 2185, Green Hills NSW 2323) to prepare an Aboriginal Cultural Heritage Assessment for a proposed hard rock quarry to be known as Deep Creek Quarry, off Bucketts Way, Limeburners Creek NSW.

The proposed hard-rock quarry, associated facilities, access roads and intersections are located within Lot 472 of DP 753178, Lot 48 of DP 753178, Lot 551 of DP 1238818, Lot 552 of DP 1238818, Crown road reserve adjoining these lots and The Bucketts Way Road reserve at 279 Deep Creek Road, Limeburners Creek within the Parish of Karuah, County of Gloucester in the Mid-North Coast local government area of New South Wales in the Karuah Local Aboriginal Land Council area.

A locality plan of the subject site is provided below.

If you would like to register interest in the project please do so preferably by email to angela@insiteheritage.com.au, if not by mail to PO Box 198 Morisset 2264, by the 22nd September 2020. The purpose of consultation is to document cultural knowledge relevant to determining the significance of Aboriginal objects and/or places in the area of the development.

Please do not hesitate to contact Insite Heritage if you have any queries

Yours sincerely

Insite Heritage Pty Ltd

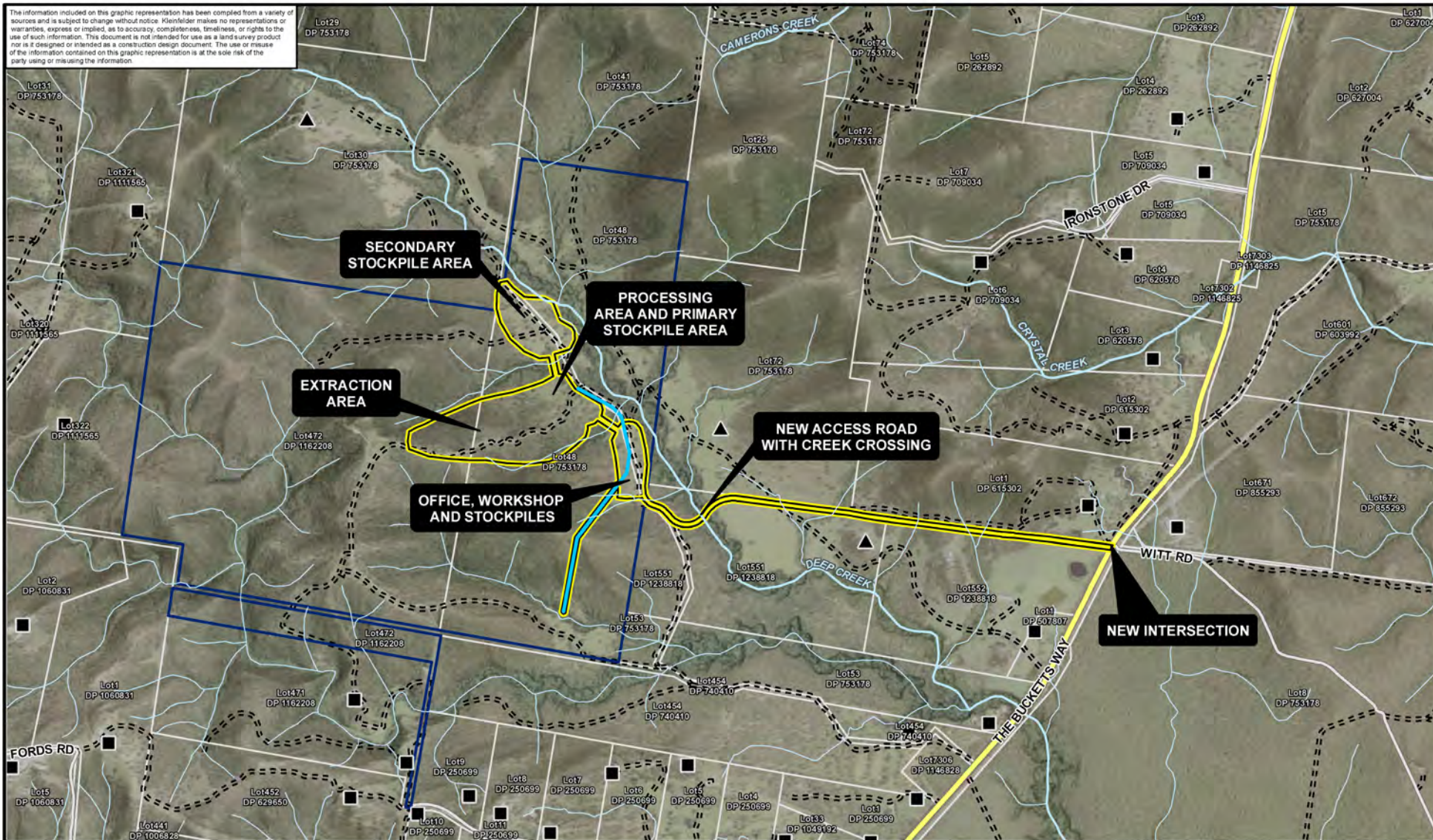
Angela Besant

Archaeologist

M 0412836031

angela@insiteheritage.com.au

The information included on this graphic representation has been compiled from a variety of sources and is subject to change without notice. Kleinfelder makes no representations or warranties, express or implied, as to accuracy, completeness, timeliness, or rights to the use of such information. This document is not intended for use as a land survey product nor is it designed or intended as a construction design document. The use or misuse of the information contained on this graphic representation is at the sole risk of the party using or misusing the information.



Legend <div> <div>Subject Land</div> <div>Development Footprint</div> <div>Water Supply Pipeline</div> </div> <div> <div>Named Watercourse</div> <div>Unnamed Watercourse</div> </div> <div> <div>Existing Receptor</div> <div>Potential Future Receptor</div> <div>Arterial Road</div> <div>Local Road</div> <div>Track</div> <div>Lot Boundaries</div> </div>	<div> <div>0 0.1 0.2 0.4 0.6 0.8 1</div> <div>km</div> </div> <div> <div>N</div> </div> <div> <div>KLEINFELDER</div> <div>Bright People. Right Solutions.</div> <div>www.kleinfelder.com</div> </div>	<div>PROJECT REFERENCE: 20151815</div> <div>DATE DRAWN: 22/11/2019 10:21 Version 2</div> <div>DRAWN BY: JBerry</div> <div>DATA SOURCE: NSW DFSI - 2019</div>	<div>FIGURE:</div> <div>1</div> <div> <div>Concept Quarry Layout</div> <div>Woodbury Civil Pty Ltd</div> <div>Deep Creek Quarry</div> <div>Bucketts Way, Limeburners Creek, NSW</div> </div>
---	---	--	--

A.4 Registrations and registrant notification to BCD and KLALC

From: [Carolyn_H](#)
To: angela@insiteheritage.com.au
Subject: Re: Deep Creek Quarry Limeburners Creek
Date: Monday, 14 September 2020 12:03:51 PM
Attachments: [image003.png](#)



Contact: Carolyn Hickey

M: 0411650057

E: Cazadirect@live.com

A: 10 Marie Pitt Place, Glenmore Park, NSW 2745

ACN: 639 868 876

ABN: 31 639 868 876

Hi Angela,

I would like to register for consultation and field work, I hold cultural knowledge relevant to determining the cultural significance of any Aboriginal objects and values that exist within the project area.

Kind Regards,
Carolyn Hickey

From: angela@insiteheritage.com.au <angela@insiteheritage.com.au>

Sent: Monday, 7 September 2020 10:18 AM

To: cazadirect@live.com <cazadirect@live.com>; corroboreecorp@bigpond.com <corroboreecorp@bigpond.com>; deckavale@hotmail.com <deckavale@hotmail.com>; didgengunawalclan@yahoo.com.au <didgengunawalclan@yahoo.com.au>; tamathews10@hotmail.com <tamathews10@hotmail.com>; karuahindigenous@outlook.com <karuahindigenous@outlook.com>; wonn1sites@gmail.com <wonn1sites@gmail.com>; doowakee@gmail.com <doowakee@gmail.com>; lowerhunterai@gmail.com <lowerhunterai@gmail.com>; bunyipmick50@gmail.com <bunyipmick50@gmail.com>; murrabidgeemullangari@yahoo.com.au <murrabidgeemullangari@yahoo.com.au>; murroomainc1@gmail.com <murroomainc1@gmail.com>; warren@yarnteen.com.au <warren@yarnteen.com.au>; lennie.anderson011@bigpond.com <lennie.anderson011@bigpond.com>; deshickey@bigpond.com <deshickey@bigpond.com>; widescope.group@live.com <widescope.group@live.com>; yinarculturalservices@bigpond.com <yinarculturalservices@bigpond.com>; dontminemeay@gmail.com <dontminemeay@gmail.com>; leedavison114@yahoo.com.au <leedavison114@yahoo.com.au>; kevin.duncan@bigpond.com <kevin.duncan@bigpond.com>; bobsam1@bigpondnet.au <bobsam1@bigpondnet.au>

Cc: jberry@wedgetail.com.au <jberry@wedgetail.com.au>

Subject: Deep Creek Quarry Limeburners Creek

Please find attached an invitation to register for the cultural heritage assessment of the proposed Deep Creek Quarry and associated facilities Limeburners Ck, Karuah LALC area and

From: Bob & Sam
To: angel@niltchridage.com.au
Subject: FW: The Guringai also spelt Kuringgai Kuring-gai , Cooringay, Guringai, Goorenggai, Goreenggai, Gourenggai, Gingai, Goorenggai, Gringai, Corringorri and Guringay on our language dictionary - Guthang.
Date: Tuesday, 8 September 2020 10:16:59 AM
Attachments: [Syron.pdf](#)
[Premier NSW Press Draft 18 AUG 2019 Letter Re Guringai statements 2nd June 2020_.pdf](#)
[Niltchridage, Michael, letter re: Guringai descendants 2nd June 2020_.pdf](#)
[McMahon2019.pdf](#)
[21062020_McMahon_FINAL.pdf](#)

Dear Angela

Thank you for your email I would like to register interest in the project - Preparation of an Aboriginal Cultural Heritage Assessment– State significant project Limeburner's Creek NSW. sorry about the long email but people need to know who the true Guringai people are.

My name is Robert Syron Registered Aboriginal owner of Worimi / Guringai Lands , Australian Rwandan War veteran 1994-95, ANZAC Peace Prize 1995, Meritorious Unit Citation.

This is a link to the history of the area and my family "The kabook and Watoo people" <https://hunterlivinghistories.com/2018/08/15/the-kabook-watoo/>

You Tube Guringai language <https://www.youtube.com/watch?v=I0geN8yuoCw>

Please read attachment "Premier NSW" this is 7 Aboriginal land councils are in support and this is not including 4 more Aboriginal land councils North of the Hunter River NSW who are also in support that the Guringai are North of the Hunter River,

Attachment "Syron" Koorie mail news paper

The use of a word Guringai or spelt kuring-gai has no connection to Sydney, Gosford right up to Newcastle. Guringai is not the language group, tribe or nation of the areas from **Sydney, Gosford, up to Newcastle** The words Kuring-gai changed to Guringai are not from the Central Cost or Sydney

Guringay voices heard as City of Sydney removes references to Ku-ring-gai/Guringai

<https://nilt.com.au/guringay-voices-heard-as-city-of-sydney-removes-references-to-ku-ring-gai-guringai/>

These claims have been going on for too long reporters, researchers are not researching correctly and completely destroying our history. The Guringai also spelt kuringai, Kuring-gai , Cooringay, Guringai, Goorenggai, Goreenggai, Gourenggai, Gingai, Goorenggai, Gringai, Corringorri and Guringay on our language dictionary – Guthang.

The Sydney Council have made change after it was reviewed by it researchers and has now removed all references , The Mosman and Northern Sydney beaches Councils has done the same.

Cathie Burgess PhD Senior Lecturer Sydney School of Education and Social Work THE UNIVERSITY OF SYDNEY Aboriginal Studies, Aboriginal Education Thompson Fellow 2020 has now forwarded information to her networks who are mainly Aboriginal Studies teachers in schools and Unis and said it is important information for them.

NSW National Parks & Wildlife Service Greater Sydney Branch and Central Coast Area Hunter Central Coast Branch are in support and have started removing all references to Guringai on the south of the hunter River east coast to Sydney. (after it was reviewed by the Aboriginal Committee NPWS) And you have a confession by Mr Bimson!

Many Schools have now started removing references

The Aboriginal Education Committee are in the process of correcting this fiction. AECG

The Northern beaches Councils Mayor Michael Regan also in support after the tax payer funded report was published in the paper and the report published by the Aboriginal heritage office Filling A Void.

The Federal Member for Warringah Zali Steggall MP is also in support

Daily telegraph "Misunderstanding: The historical fiction of the word Guringai that has filled a void in our knowledge of the original inhabitants by John Morcombe, Manly Daily February 20, 2015 2:41pm."

<https://www.dailytelegraph.com.au/newslocal/northern-beaches/misunderstanding-the-historical-fiction-of-the-word-guringai-that-has-filled-a-void-in-our-knowledge-of-the-original-inhabitants/news-story/b1a9c152c74220c535883621081a2fd2>

In a new document, Filling A Void, by the Aboriginal heritage office <http://www.aboriginalheritage.org/news/2015/filling-a-void/> (Funded by the Tax payer)

These claims being made by the newly found King Bungaree descendants from Broken Bay NSW (Gadigal Country) needs to be stopped before it destroys our history and Culture of the true Guringai and future generations North of the Hunter River, Port Stephens and Gloucester regions NSW .

The use of the word Guringai, Guringay or spelt Gringai is getting out of hand being claimed by a group calling themselves **"Guringai Tribal Link Aboriginal corporation** on the 11/08/2003" It has also been claimed that Guringai is there language group or tribal name and others (see below) regardless of the report funded by Government **"Filling A Void, by the Aboriginal heritage office."** **and Northern Councils Mayor.** They are allegedly descendants from Bungaree or through his last wife Cora Gooseberry.

Native Title claim snuffed out

<https://www.newcastleherald.com.au/story/4979410/heartache-after-claim-snuffed-out/>

"The state government recognised the claim group as the descendants of the original inhabitants of the land, but found they were **"unable to prove they had followed their traditional laws and customs continuously since the time of white settlement."** So how did "tribal elder leader of the Guringai tribe" Laurie come to the conclusion he is from the Guringai Tribe and Language group ?

A review of some claims made by descendants from Bungaree or through his last wife Cora Gooseberry in the public domain in regards to Guringai, what tribe they belong to and an email sent to me from Laurie Bimson (there is More)

Have a look two different claims only just recently I have never seen anyone in the middle of a smoking ceremony (shown in the video link) whisper and say " People like to think otherwise , but that's the way it is" or to that effect" Total disregard and disrespect to the real Guringai peoples Northern side Hunter River NSW.

[https://www.google.com.au/url?](https://www.google.com.au/url?sa=i&rlz=C&q=&esc=s&source=video&cd=2&cad=rja&uact=8&ved=2ahUKEwi926P1cPpAhWDbisKHal3BegQtlwAXoECAEQAAQ&url=https%3A%2F%2Fwww.facebook.com%2FstreetbeatHHH%2Fvideos%2F Laurie-bimson-does-smoking-ceremony-and-welcome-to-country%2F628095611286025%2F%3F_so_%3Dpermalink%26_rv_%3Drelated_videos&usq=AOvVaw3eQj3WR2y03RWPl-TJ_qrr)

https://www.google.com.au/url?sa=i&rlz=C&q=&esc=s&source=video&cd=6&cad=rja&uact=8&ved=2ahUKEwi926P1cPpAhWDbisKHal3BegQtlwAXoECAEQAAQ&url=https%3A%2F%2Fms-my.facebook.com%2Fforestvillemontessorischool%2Fvideos%2FLaurie-bimson-guringai-man-descendent-of-bungaree-and-elder-of-the-guringai-trib%2F193259609380724%2F&usq=AOvVaw2CdUmMlfbtFBXShKbtj_k

And this one it's a ripper

https://www.google.com.au/url?sa=i&rlz=C&q=&esc=s&source=video&cd=6&cad=rja&uact=8&ved=2ahUKEwi926P1cPpAhWDbisKHal3BegQtlwAXoECAEQAAQ&url=https%3A%2F%2Fms-my.facebook.com%2Fforestvillemontessorischool%2Fvideos%2FLaurie-bimson-guringai-man-descendent-of-bungaree-and-elder-of-the-guringai-trib%2F193259609380724%2F&usq=AOvVaw2CdUmMlfbtFBXShKbtj_k

I found a book on eBay got it for \$5 Written by the King Bungaree decedents I have scanned pages from the book that shows many things that are conflicting.

Page 4 the discovery of aboriginality,
page 7 "Sarah may have been the daughter of Bungaree"

The information in the book, the information below and all the other information sent to you conflicts with their own story's and even their own story's conflict with their own claims on the internet.

we have another story Jan 20220 <http://www.pittwateronline.com.au/Guringai-Aboriginal-Tours-Profile.php>

My name is Laurie Bimson. I'm a proud Aboriginal man from what is **known as Guringai country.**

Guringai Country is from Lake Macquarie in the north to the south Lane Cove River, the Ocean on the East and in the West the old northern road just short of Wisemans ferry. There are many clans in Guringai country, **Garigal** being one of them.

we have another claim from Laurie in regards to Guringai at Story Park Community Centre

https://www.facebook.com/streetbeatHHH/videos/laurie-bimson-does-smoking-ceremony-and-welcome-to-country/628095611286025/?_so=_permalink&_rv=_related_videos

Laurie Bimson "I would like to welcome you to **"Guringai Country"** he then said **"The country is Gadigal"** the people are Guringai" The Nation is Wannungine." (see attachment Kabook) Guringai spelt **Goorenggai is on the Northern side of the Hunter river NSW.**

This claim and story totally contradicts his email below and his video at the opening Story Park Community Centre above

<http://www.pittwateronline.com.au/Guringai-Aboriginal-Tours-Profile.php>

"My name is Laurie Bimson. I'm a proud Aboriginal man from what is known as **Guringai country.** **Guringai Country** is from **Lake Macquarie** in the north to the south Lane Cove River, the Ocean on the East and in the West the old northern road just short of Wisemans ferry. There are many clans in Guringai country, **Garigal** being one of them, which is our clan."

On this site <https://www.guringaitours.com.au/> They claim

"I'm Laurie Bimson, Guringai man, a descendant of Bungaree, leader of the Guringai tribe"

You have **Neil Evers** story a Bungaree descendant printed 2014 Pittwater news before the tax payer funded report filling a void report was published 2015 this story by Neil Evers who is laurie Bimsons cousin 2014 <http://www.pittwateronline.com/bungaree-was-flamboyant-by-neil-evers.php>

Acknowledging it is not Guringai Country , people or language.

"Bungaree and his people brought with them their Garigal language, which is now mistakenly called Kuringgai (Guringai), a name first coined by the Reverend John Fraser in 1892 and used by linguist Arthur Capell in 1970 'for convenience'. Neil Evers own words

Laurie Bimson

From: Guringaitours <guringaitours@gmail.com>

Sent: Sunday, 18 August 2019 6:57 PM

To: Bob & Sam <bobsam1@bigpond.net.au>

Subject: Re: Language differences and the use of the word Kuringai. Kuringai. kuringay changed and now referred to Guringai by some in 2015

"Note tribes do things differently we are the salt water people like **my ancestor Bungaree we are part of a nation that goes down to eden near the Victorian border and north to port Stephens and west the mountains there are about 29 tribes and languages in our nation . I am related to the Gadical** the over the harbour through Bungaree last wife Cora Gooseberry"

Regards . Laurie Bimson.

Sent from my iPad

<https://www.guringaitours.com.au/> " **I am Laurie Bimson, Guringai man**, a descendant of Bungaree, leader of the **Guringai tribe**"

Mr Laurie Bimson is also on the advisory committee for National Parks and Wildlife Service Metro North East, various other advisory committees!
and link to his video, I was told funded by NPWS. –
<https://www.bing.com/videos/search?q=laurie+bimson&view=detail&mid=73643FF53DFED33CBFD273643FF53DFED33CBFD2&FORM=VRDGAR>
" **I am Laurie Bimson, Guringai man**,

On this web site Mr laurie Bimson and Mr Neil Evers claim they are direct descendant of the Garigal clan of Guringai language people,
http://news.navy.gov.au/en/Jul2015/Events/2166/Cameragal-Country-Recognised-at-HMAS-Penguin.htm#_XVjCnduLIU

Another web site whom is Laurie Bimson cousin <http://www.pittwateronlinenews.com/Budawa-Aboriginal-Signage-Group-Profile.php>

Extracts below from the signage group as follows – For Kuringai Chase NSW" The word for man or person is kuri (Koori) and kuringga, the possessive means 'belonging to kuri'. Ngai (ng/guy) means 'woman'. **The name Kuringai now Guringai was coined by ethnographer John Fraser in 1892 as "the original name of the tribal group was not known".**

Another inconsistency <https://historyoforiginalsydney.edu.au/north-coastal> "What languages were spoken in this region?"
In 1892 the ethnographer John Fraser used the term 'Kuringgai' for a 'nation' which he showed extending along the coast north of Sydney Harbour. He said the name Kuring-gai meant 'men'. **Tracey Howie, 2010 Chairperson of the Guringai Link Aboriginal Corporation, relates that "Wannungini is our traditional name".**

And another <http://www.pittwateronlinenews.com/neil-evers-profile.php> its claimed "Guringai is your language not the people".

Mr Neil Evers, Laurie Bimson Cousin "Until about 4 years ago I was unaware of my ancestry. I am a 5th generation Aboriginal. A cousin that I never knew, Bob Waterer, found all of our family's history. What a journey we have had. Bob has recently released a book "The Story of Bob Waterer and his Family 1803-2010" telling the entire story.

I now belong to the Aboriginal Support Group – Manly Warringah Pittwater. The ASG relies on membership monies to help in education of children of all cultures to understand and close the gap. The Guringai Tribal Link (I am a member) **has produced a booklet 'Guringai Language for Beginners Vol 1-2'** 10,000 copies have been distributed and schools are looking for more, so I personally would like to help the ASG raise the monies needed to produce more. **I am editor of the group's newsletter, the Elimatta."**

Another web site I found yesterday with another tribal name called the **Deerabin**
<https://ninglunbooks.wordpress.com/early-last-century/family-stories-4-a-guringai-family-story-warren-whitfield/>

Family stories 4 — A Guringai Family Story — Warren Whitfield

The family concerned is Warren's mother's family, related to me only by marriage.

Sophy Bungaree was born in Brisbane Water on the northern arm of Broken Bay, Hawkesbury River in around 1810. At that time the Hawkesbury River was known to the Aboriginal inhabitants as **Deerabin**.

And this story by Neil Evers who is laurie Bimsons cousin 2014 <http://www.pittwateronlinenews.com/bungaree-was-flamboyant-by-neil-evers.php>

Acknowledging it is not Guringai Country , people or language.

"Bungaree and his people brought with them their **Garigal language**, which is **now mistakenly** called **Kuringgai (Guringai)**, a name first coined by the Reverend John Fraser in 1892 and **used by linguist Arthur Capell in 1970 'for convenience'**."

And the icing on the cake laurie Bimsons confession

below in an email from the Director Deon Rensburg The CEO of National Parks and Wildlife Services (NPWS).

Laurie acknowledged that the use of Guringai is not appropriate in the way it is being used in Sydney and said he had been moving away from using it. I discussed with him that we would be looking to remove the term from use in any of our interpretive and other materials as it was incorrect **and he was accepting of this.** Had a similar discussion with Nathan and it sounds like we are all in agreement.

What NPWS will now do is to look to remove all use of the term that denotes a Guringai as a tribe or language group in Northern Sydney) that includes web content, interpretive signs, brochures etc (may take some time to get them all but we will progress as fast as we can). This has commenced. "

Claims made on the public domain (that I can find) all descendants from Bungaree or through his last wife Cora Gooseberry

- 1."Guringai Clan"
 - 2."Guringai language group"
 - 3."Garigal Clan of the Guringai language people"
 4. "The original name of the tribal group was not known"
 5. "Wannungini is our traditional name"
 6. "I am related to the Gadical"
 7. "Hawkesbury River was known to the Aboriginal inhabitants as Deerabin."
- and more

"The big Questions is how and where did You and they get Guringai From?" When all recorded History shows Guringai on the Northern side of the Hunter River!!!

Interesting when you read this information <https://www.wikitree.com/wiki/Bungaree-2> The links to other members of this tree can be read

Bungaree - **Garigal Country** and his wife **Matora - (Awabakal) Garigal Country** (where do they get Guringai from???)

Bungaree Bungaree
Born **1775** in **Garigal Country, Australia** ♀
Son of **Unknown Garigal** and [mother unknown]
[sibling(s) unknown]
Husband of **Matora (Awabakal) Garigal** — married [date unknown] [location unknown]
Husband of **Cora (Gooseberry) Bungaree** — married [date unknown] in Sydney, New South Wales Australia ♀
DESCENDANTS
Father of **Bowen Bungaree** and **Sophy (Bungaree) Webb**

Cora Bungaree formerly **Gooseberry**
Born **about 1777** in **Sydney, New South Wales, Australia** ♀
Daughter of **Mooroooboorra (Maroubra) Gooseberry** and [mother unknown]
[sibling(s) unknown]
Wife of **Bungaree Bungaree** — married [date unknown] in Sydney, New South Wales Australia ♀
Mother of **Bowen Bungaree**
Died **30 Jul 1852** in **Sydney, New South Wales Australia** ♀

Sophy Webb formerly **Bungaree**
Born **1810** in **Brisbane Water District, New South Wales, Australia** ♀
ANCESTORS
Daughter of **Bungaree Bungaree** and **Matora (Awabakal) Garigal**
Sister of **Bowen Bungaree** [half] and **Sarah (Bungaree) Lewis** [half]
Wife of **James Webb** — married [date unknown] [location unknown]
DESCENDANTS
Mother of **Charlotte (Webb) Ashby**
Died **1877** in **New South Wales, Australia** ♀

References to the Guringai , Gringai or spelt Guringay

Howitt and Fison Papers
<https://fromthepage.com/tyay/howitt-and-fison-papers/hw0146>

Guringai search
https://fromthepage.com/display/search?utf8=%E2%9C%93&collection_id=148&search_string=guringai&button=

Gringai search
https://fromthepage.com/display/search?utf8=%E2%9C%93&collection_id=148&search_string=gringai&button=

And Guringay search https://fromthepage.com/display/search?utf8=%E2%9C%93&collection_id=148&search_string=guringay&button=

Kind regards

Robert Syron

Registered Aboriginal owner of Worimi Guringai Lands

Australian Rwandan War veteran 1994-95, ANZAC Peace Prize 1995, Meritorious Unit Citation

Guringai language <https://www.youtube.com/watch?v=lQgeN8vuoCw>

kabook and Watoo people <https://hunterlivinghistories.com/2018/08/15/the-kabook-watoo/>.

We acknowledge the Traditional Lands of the Worimi , Guringai or spelt Guringay and Biripi people of the kutthung language the Custodians, spiritual and cultural owners of these lands. We acknowledge our Elders past and present to all Aboriginal and Torres Strait Islander people. The Gringai continue to practice Culture and have a strong connection to our lands and secrete sites where our ancestors lay in the Barrington / Gloucester Manning Valley area

From: [Corroboree Aboriginal Corporation](#)
To: angela@insiteheritage.com.au
Cc: [Marilyn Carroll-Johnson](#)
Subject: Re: EOI Deep Creek Quarry Limeburners Creek
Date: Monday, 7 September 2020 11:15:40 AM

Angela Besant Director
PO Box 198 Morisset NSW 2264
M [0412836031](tel:0412836031)

Dear Angela

Re: Expression of Interest - Deep Creek Quarry Limeburners Creek -Full capacity

Please register Corroboree Aboriginal Corporation. We are registering in a full capacity. We are aboriginal people who are culturally aware. We have the necessary ability, awareness, experience, skills, insight and the knowledge to identify artefacts on field work. And as Aboriginal People we connect thru the land, thru our ancestors and our heritage. Therefore we are able participate on all levels. We have worked with many archaeologists across a broad landscape. We have consulted with your company on previous projects. We have all the relevant insurances and safety gear. We are all fit and adapt to a vast landscape.

Contact is preferred via email: corroboreecorp@bigpond.com. The contact number, email and contact person is also listed in the signature.

Please do not disclose any of our details to LALC nor publish our correspondence for LALC to peruse. Please only note our corporation details i.e. our name and only for registration purposes. As noted our details are not to be passed on/disclosed to LALC. We understand your need for confirmation of our corporations name on your lists for registered stakeholders, in that we have responded for inclusion, to participate on all levels. The use of our name as registered party, is fine, however non-disclosure of our actual correspondence, please. Just our name and contact details as registered stakeholders for registration purposes and your records and proponents. Thanks.

Kind regards
Marilyn Carroll-Johnson
Director
Corroboree Aboriginal Corporation
Mob: [0415911159](tel:0415911159)
Ph: [0288244324](tel:0288244324)
E: corroboreecorp@bigpond.com
Address: PO Box 3340
ROUSE HILL NSW 2155

On 7 Sep 2020, at 10:18 am, angela@insiteheritage.com.au wrote:

Please find attached an invitation to register for the cultural heritage assessment of the proposed Deep Creek Quarry and associated facilities Limeburners Ck, Karuah LALC area and Mid-North Coast LGA.

Please register by return email by the 22nd Sept 2020

Any queries please don't hesitate to contact Angela Besant

From: [Lilly Carroll](#)
To: [Angela Besant](#)
Subject: Re: Deep Creek Quarry Limeburners Creek
Date: Monday, 7 September 2020 10:24:39 AM
Attachments: [image003.png](#)

Hi Angela

DNC would like to register an interest into Re: deep creek quarry lime burners creek

Kind regards DNC
Paul Boyd & Lilly Carroll
0426823944

Sent from myMail for iOS

Monday, 7 September 2020, 10:18 am +1000 from Angela Besant
<angela@insiteheritage.com.au>:

Please find attached an invitation to register for the cultural heritage assessment of the proposed Deep Creek Quarry and associated facilities Limeburners Ck, Karuah LALC area and Mid-North Coast LGA.

Please register by return email by the 22nd Sept 2020

Any queries please don't hesitate to contact Angela Besant

Thanks

Angela Besant Director

Monday to Thursday



INSITE HERITAGE
PTY LTD

PO Box 198 Morisset NSW 2264

M 0412836031

From: [Cherie Carroll Turris](mailto:Cherie.Carroll.Turris@insiteheritage.com.au)
To: angela@insiteheritage.com.au
Subject: Re: Registration of Interest - Deep Creek Quarry Limeburners Creek
Date: Monday, 7 September 2020 11:09:47 AM

Angela Besant Director
PO Box 198 Morisset NSW 2264
M [0412836031](tel:0412836031)

Dear Angela

Re: Registration of Interest - Deep Creek Quarry Limeburners Creek

Please register our corporation for full process on this project. We are aboriginal people. We are all experienced Aboriginal Cultural Heritage Site Officers. We and our ancestors have lived all over New South Wales. We are Aboriginal people whom have lived a very nomadic life. We have our history & stories passed down by our Elders. We have assisted in surveys, salvage & consulting in with archaeologists over a vast number of years. We are experienced in the field of identifying artefacts, Including our learned history and knowledge passed down by our Elders. We appreciate the opportunity to be part of protecting and preserving our Aboriginal heritage. We are very proud of our heritage passed to us by our Elders and our Ancestors. We are therefore pleased with being a part of this research and provide our experience in cultural heritage input.

The potential to contain evidence of Aboriginal of actual occupation on the specific project area and provide cultural links to our past ancestors is of great value and significance. Our organisation has a current public liability insurance policy and OHS compliant and all members hold white cards and all the required safety gear.

All our members are Aboriginal and very experienced in the identification of Aboriginal artefacts and we have consulted with numerous Archeologists in surveys including excavation/fieldwork. We are very passionate about land and conservation matters to which some of members are currently studying cultural heritage. We hold strong links to our our ancestors, our culture and our heritage.

Please note we do not want our details forwarded to LALC, please do not release our correspondence nor any details.

Please update Email: gunjeewong@yahoo.com.au

and phone number Mob: 0438 428 805. Please forward a copy of project to my postal address: 1 Bellevue Place, PORTLAND NSW 2847 and to this email. Please remove any other phone numbers and emails as per ORIC website & OEH. My details have also been updated with all the relevant requirements.

Sincerely
Cherie (Carroll) Turris
Aboriginal Heritage Custodian
Mob: 0438 428 805
Email: gunjeewong@yahoo.com.au
1 Bellevue Place
PORTLAND NSW 2847
Mob: 0438 428 805
Email: gunjeewong@yahoo.com.au



From: [Leonard Anderson](#)
To: angela@insiteheritage.com.au
Subject: Re: Deep Creek Quarry Limeburners Creek
Date: Tuesday, 8 September 2020 5:11:09 PM
Attachments: [image003.png](#)

Hi Ange,

Yes Nur-Run-Gee Pty Ltd would most definitely be interested in this Site Investigation

Thanking You

Lennie Anderson OAM (Director)

On 9/7/2020 10:18 AM, angela@insiteheritage.com.au wrote:

From: [WIDESCOPE](#)
To: angela@insiteheritage.com.au
Subject: RE: Deep Creek Quarry Limeburners Creek
Date: Wednesday, 9 September 2020 12:09:48 PM
Attachments: [99A73620715F43E39C18E2C9B030383F.png](#)

Hi,

My name is Steven Hickey

Please register my interest in the Aboriginal Cultural heritage assessment for the Deep Creek Quarry Limeburners Creek project

I am a recognised indigenous cultural knowledge holder. I hold cultural knowledge relevant in determining the significance of Aboriginal objects and places in the vicinity of the study area. I hold a cultural connection to the area of the project and surrounding areas

My preferred Method of contact is Via Email: widescope.group@live.com

Or Steven Hickey (RAP) Mob 0425230693

Donna Hickey Administration 0425232056

My level of involvement:

I would like to attend Community Consultation meetings and to be considered for any future field survey works. I am fit and skilled in all aspects of cultural surveying works.

Thank you for your consideration, I look forward to assisting the team with the Aboriginal Cultural Heritage section of the project.

I do not require any hard copies of reports.

Privacy: Please do not release my personal details including my Email address to other RAPs, such as group Emails

I give consent to Local Aboriginal Land Council and Heritage NSW thank you.

Regards

Steven Hickey

From: angela@insiteheritage.com.au
Sent: Monday, 7 September 2020 10:19 AM
To: cazadirect@live.com; corroboreecorp@bigpond.com; deckavale@hotmail.com; didgengunawalclan@yahoo.com.au; tamatthews10@hotmail.com; karuahindigenous@outlook.com; wonn1sites@gmail.com; doowakee@gmail.com; lowerhunterai@gmail.com; bunyipmick50@gmail.com; murrabidgeemullangari@yahoo.com.au; murroomainc1@gmail.com; warren@yarnteen.com.au; lennie.anderson011@bigpond.com; deshickey@bigpond.com; widescope.group@live.com; yinarculturalservices@bigpond.com; dontminemeay@gmail.com; leedavison114@yahoo.com.au; kevin.duncan@bigpond.com; bobsam1@bigpondnet.au
Cc: jberry@wedgetail.com.au
Subject: Deep Creek Quarry Limeburners Creek

Please find attached an invitation to register for the cultural heritage assessment of the

Insite Heritage

PO Box 198

Morisset 2264

angela@nsiteheritage.com.au

Karuah LALC

ceo@karuahaboriginal.com.au

office@karuahaboriginal.com.au

Re Deep Creek Quarry – Limeburners Creek

Notification of project registrants

Carolyn Hickey – A1 Indigenous Services Pty Ltd

Bob Syron

Name withheld

Paul Boyd and Lilly Carroll - Didgengunawal Clan

Name withheld

Lennie Anderson – Nur Run Gee Pty Ltd

Steven Hickey – Widescope

Insite Heritage

PO Box 198

Morisset 2264

angela@nsiteheritage.com.au

Biodiversity and Conservation Division

heritagemailbox@environment.nsw.gov.au

Re Deep Creek Quarry – Limeburners Creek

Notification of project registrants

Carolyn Hickey – A1 Indigenous Services Pty Ltd

Bob Syron

Corroboree Aboriginal Corporation

Paul Boyd and Lilly Carroll - Didgengunawal Clan

Cherie Carroll Turrise – Gunjeewong

Lennie Anderson – Nur Run Gee Pty Ltd

Steven Hickey – Widescope

From: angela@insiteheritage.com.au
To: ["heritagemailbox@environment.nsw.gov.au"](mailto:heritagemailbox@environment.nsw.gov.au)
Subject: Deep Creek Quarry Limeburners Creek
Date: Wednesday, 23 September 2020 2:30:00 PM
Attachments: [BCD notification.pdf](#)
[image003.png](#)

Re proposed quarry

Please find attached a list of registrants for the above project.

Any queries please don't hesitate to give Angela Besant a call on 0412836031

Regards

Angela Besant

Monday to Thursday



INSITE HERITAGE
PTY LTD

PO Box 198 Morisset NSW 2264

M 0412836031

A.5 Draft methodology and feed back

From: angela@insiteheritage.com.au
To: ["cazadirect@live.com"](mailto:cazadirect@live.com); ["Bob & Sam"](mailto:Bob & Sam); ["corroboreecorp@bigpond.com"](mailto:corroboreecorp@bigpond.com);
["didgengunawalclan@yahoo.com.au"](mailto:didgengunawalclan@yahoo.com.au); ["gunjeewong@yahoo.com.au"](mailto:gunjeewong@yahoo.com.au); ["lennie.anderson011@bigpond.com"](mailto:lennie.anderson011@bigpond.com)
Subject: Deep Creek Quarry - draft methodology
Date: Thursday, 1 October 2020 1:10:00 PM
Attachments: [DraftACHAMethodology_Deep_Creek_Quarry_30092020.pdf](#)
[image003.png](#)

Please email any comments to Angela@insiteheritage.com.au by the 30th Oct – all comments appreciated

Thanks

angela besant

Angela Besant Director

Monday to Thursday



INSITE HERITAGE
PTY LTD

PO Box 198 Morisset NSW 2264

M 0412836031

From: angela@insiteheritage.com.au
To: ["ceo@karuahaboriginal.com.au"](mailto:ceo@karuahaboriginal.com.au)
Cc: ["office@karuahaboriginal.com.au"](mailto:office@karuahaboriginal.com.au)
Subject: Deep creek Quarry
Date: Thursday, 1 October 2020 1:12:00 PM
Attachments: [DraftACHAMethodology_Deep_Creek_Quarry_30092020.pdf](#)
[image001.png](#)

Please email any comments to Angela@insiteheritage.com.au by the 30th Oct – all comments appreciated

Thanks

angela besant

Angela Besant Director

Monday to Thursday



INSITE HERITAGE
PTY LTD

PO Box 198 Morisset NSW 2264

M 0412836031

From: angela@insiteheritage.com.au
To: ["widescope.group@live.com"](mailto:widescope.group@live.com)
Subject: Deep Creek Quarry
Date: Thursday, 1 October 2020 1:11:00 PM
Attachments: [DraftACHAMethodology_Deep Creek Quarry_30092020.pdf](#)
[image003.png](#)

Please email any comments to Angela@insiteheritage.com.au by the 30th Oct – all comments appreciated

Thanks

angela besant

Angela Besant Director

Monday to Thursday



INSITE HERITAGE
PTY LTD

PO Box 198 Morisset NSW 2264

M 0412836031

From: [Bob & Sam](#)
To: angela@insiteheritage.com.au
Subject: RE: Deep Creek Quarry - draft methodology
Date: Friday, 2 October 2020 8:34:57 AM
Attachments: [image001.png](#)
[NNTT Final Draft MLALC letter Re Guringai Awabakal claimants 3rd June 2020 .pdf](#)
[21082020_NC_NNTT_FINAL.pdf](#)
[MC20-002868.pdf](#)
[Syron.pdf](#)

Dear Angela Besant Director insiteheritage

If you are including any Cultural history you can add any of my information photos ect. Sorry about all the information but the correct cultural history needs to be told.

kabook and Watoo people <https://hunterlivinghistories.com/2018/08/15/the-kabook-watoo/>

Attached 21082020 is a response from the Office of the Register Aboriginal Land rights Act 1986 and my emails sent to *David Harris MP Member for Wyong .Shadow Minister for the Central Coast, Shadow Minister for Aboriginal Affairs and Treaty and Shadow Minister for Regional Transport*

The Office of the register Aboriginal land Right Act with their concerns over the registration of the "Private" land use agreement including an undetermined Aboriginal Land Claim made by Metropolitan Local Aboriginal Land Council, **Claim group are not registered through the legal process as Aboriginal Owners in NSW**, The native title claim for the Awabakal and Guringai People (NC2013/002) was discontinued on 28/06/2017 and more.

More History and evidence to back our story the true Guringai tribal areas and people recorded in the 1800s. The Gringai cover a larger area then people would like to believe and think.

(Also spelt kuringai Kuring-gai , Cooringay, Guringai, Gooreeggai, Goreenggai, Gourenggai, Gingai, Gooreenggai, Gringai, Corringorri and Guringay on our language dictionary – Guthang)

Donald Mcrae identified the boundaries of the Tookala – Gringai <https://fromthepage.com/tyay/howitt-and-fison-papers/hw0143/display/452363?translation=false> and <https://fromthepage.com/tyay/howitt-and-fison-papers/hw0144/display/452365> (the first one has been transcribed to Yookala but a month later it is clear it is just a badly written script.). This was knowledge was achieved and taken from local knowledge and family's - Mr Hook and others from the Barrington Gloucester and Dungog areas NSW.

Extracts "Gringai "From the Barnet River to karuah River - North and South to Myall River to Mount royal ranges East and West."

Gordon Bennet Identified the **Gringai** Dungog, Williams and Patterson Rivers

James Boydell 1820s Identified – **Greengai** (I have on map as Geawegal) he

refers to them headquartering at Camyr Allyn.. that I have as Alamongarindi Clan (Camyr Allyn) ...

William Scott born 1844 identified **Gringai** Carrington Nsw

R. H. Mathews 1898 Gooreenggai North of the Hunter River No. 5. Within this area, which extends from the Hunter river almost to the Macleay, the initiation ceremonies are of the Keeparra type described by me in Journ. An/hrop. Ins/. London, Vol. xxvi, pp. 320-340. This tract of country is inhabited by the remnants of the tribes speaking different dialects, some of the most important of which are the following: Wattung, **Gooreenggai**, Minyowa, Molo, Kutthack, Bahree, Karrapath, Birrapee, etc. North of the Hunter river and extending along the sea coast to about Cape Hawk there is an elementary ceremony called Dhalgai,

John Fraser 1890 "I know that the **Goringai tribe** occupied the whole of the east coast from the Hastings and the Manning down to the Hunter, and had several subdivisions named from particular localities in their territory."

William Anderson Cawthorne, ca. 1865-187-?, including family details of the **Coringoori Tribe**, Patricks Plains, Singleton District, New South Wales, 187-?

Howitt - Refers to a tribe he calls the Geawegal, as inhabiting part of the valley of the Hunter River extending to each lateral watershed and from twenty to thirty miles along the valley on each side of Glendon. On one of 'the maps illustrating his work he shows their territory as lying along the north bank of the Hunter from about Tomago to Glendon. **Howitt also** applies the name to the aborigines of the district around Dungog on the authority of J.W Boydell of Camyr Allyn NSW, who was noted for his keen interest in the natives, (Geawegal, with the evidence recorded would be a clan of the Gringai and of the Kattang language group.

Dr. Elkin at Port Stephens recorded "Worimi are a clan of the Kattang"

W J Enright 1932 Identified the **Giringai** "The suffix "gal," however, shows conclusively that "**the Geawegal was only a horde, and Kattang was the language,**" at any rate as far west as Maitland and Paterson. The Geawegal, he (**Howitt**) states, spoke the language of and intermarried with those of Maitland and also of Paterson. **The Gringai, according to the same author,** intermarried with the Paterson River natives and those of Gloucester."

Thelkeld, whose work was on the Awaba ,AKA- Awabakal of Lake Macquarie only (recorded as Awaba on the original map)

Kind regards

Robert Syron

Registered Aboriginal owner of Worimi Guringai Lands

Australian Rwandan War veteran 1994-95, ANZAC Peace Prize 1995, Meritorious Unit Citation

Guringai language <https://www.youtube.com/watch?v=l0geN8vuoCw>

kabook and Watoo people <https://hunterlivinghistories.com/2018/08/15/the-kabook-watoo/>

We acknowledge the Traditional Lands of the Worimi , Guringai or spelt Guringay and Biripi people of the kutthung language the Custodians, spiritual and cultural owners of these lands. We acknowledge our Elders past and present to all Aboriginal and Torres Strait Islander people. The Gringai continue to practice Culture and have a strong connection to our lands and secrete sites where our ancestors lay in the Barrington / Gloucester Manning Valley area

From: angela@insiteheritage.com.au <angela@insiteheritage.com.au>

Sent: Thursday, 1 October 2020 12:40 PM

To: cazadirect@live.com; 'Bob & Sam' <bobsam1@bigpond.net.au>;
corroboreecorp@bigpond.com; didgengunawalclan@yahoo.com.au;
gunjeewong@yahoo.com.au; lennie.anderson011@bigpond.com

Subject: Deep Creek Quarry - draft methodology

Please email any comments to Angela@insiteheritage.com.au by the 30th Oct – all comments appreciated

Thanks

angela besant

Angela Besant Director

Monday to Thursday



INSITE HERITAGE
PTY LTD

PO Box 198 Morisset NSW 2264

M 0412836031

From: ElectorateOffice Wyong <ElectorateOffice.Wyong@parliament.nsw.gov.au>

Sent: Friday, 31 July 2020 2:16 PM

To: 'Bob & Sam' <bobsam1@bigpond.net.au>

Subject: RE: The Guringai also spelt kuringai Kuring-gai , Cooringay, Guringai, Gooreeggai, Goreenggai, Goureenggai, Gingai, Gooreenggai, Gringai, Corringorri and Guringay on our language dictionary – Guthang.

Good Afternoon Bob

Just letting you know that David thanks you for your email and would like to advise he is sending your correspondence to the relevant Government Ministers. David says under the Aboriginal Land Rights Act 1983 there is a statutory responsibility for the registrar to deal with these issues. He is therefore forwarding your concerns to the registrar's office and will inform you of any response he receives.

Regards

Colleen Michael

Senior Electorate Officer

David Harris MP

Member for Wyong

Shadow Minister for the Central Coast

Shadow Minister for Aboriginal Affairs and Treaty and Shadow Minister for Regional

Transport

NOTICE – This email is solely for the named addressee and may be confidential. You should only read, disclose, transmit, copy, distribute, act in reliance on or commercialise the contents if you are authorised to do so. If you are not the intended recipient of this email, please notify the sender by email immediately and then destroy any copy of this message. Except where otherwise specifically stated, views expressed in this email are those of the individual sender. The New South Wales Parliament does not guarantee that this communication is free of errors, virus, interception or interference.

From: Bob & Sam <bobsam1@bigpond.net.au>

Sent: Friday, 31 July 2020 9:29 AM

To: ElectorateOffice Wyong <ElectorateOffice.Wyong@parliament.nsw.gov.au>; linda.burney.mp@aph.gov.au

Subject: FW: The Guringai also spelt kuringai Kuring-gai , Cooringay, Guringai, Gooreeggai, Goreenggai, Goureenggai, Gingai, Gooreenggai, Gringai, Corringorri and Guringay on our language dictionary – Guthang.

Dear

Linda Burney Shadow Minister for Indigenous Australians Mr David Robert HARRIS Shadow Minister for Aboriginal Affairs and Treaty, and Shadow Minister for the Central Coast

This more than just about a Native Title issue it is also about cultural theft.

My name is Robert Syron Registered Aboriginal owner of Worimi / Guringai Lands Australian Rwandan War veteran 1994-95, ANZAC Peace Prize 1995, Meritorious Unit Citation

My family The kabook and Watoo people
<https://hunterlivinghistories.com/2018/08/15/the-kabook-watoo/>

Please read attachment “Premier NSW” this is 7 Aboriginal land councils are in support and this is not including 4 more Aboriginal land councils North of the Hunter River NSW who are also in support that the Guringai are North of the Hunter River,

Also read (Syron- Attached please). How and why does Government support and process land use agreements when people make claims they cannot provide any evidence or references that its Guringai Country on the coast when it is not! by a group of people who claim to be descendants of King Bungaree?

The use of a word Guringai or spelt kuring-gai has no connection to Sydney, Gosford right up to Newcastle. Guringai is not the language group, tribe or nation of the areas from **Sydney, Gosford, up to Newcastle** The words Kuring-gai changed to Guringai are not from the Central Cost or Sydney

Guringay voices heard as City of Sydney removes references to Ku-ring-

gai/Guringai

<https://nit.com.au/guringay-voices-heard-as-city-of-sydney-removes-references-to-ku-ring-gai-guringai/>

See Attachment "Syron" Koorie mail news paper

Guringai language <https://www.youtube.com/watch?v=l0geN8vuoCw>

This fiction and claims has been going on for too long reporters are not researching and completely distorting our history. The Guringai also spelt kuringai, Kuring-gai, Cooringay, Guringai, Gooreeggai, Goreenggai, Gourenggai, Gingai, Gooreenggai, Gringai, Corringorri and Guringay on our language dictionary – Guthang.

The Sydney Council have made change after it was reviewed by its researchers and has now removed all references, The Mosman and Northern Sydney beaches Councils has done the same.

Cathie Burgess PhD Senior Lecturer Sydney School of Education and Social Work THE UNIVERSITY OF SYDNEY Aboriginal Studies, Aboriginal Education Thompson Fellow 2020 has now forwarded information to her networks who are mainly Aboriginal Studies teachers in schools and Unis and said it is important information for them.

NSW National Parks & Wildlife Service Greater Sydney Branch and Central Coast Area Hunter Central Coast Branch are in support and have started removing all references to Guringai on the south of the Hunter River east coast to Sydney. (after it was reviewed by the Aboriginal Committee NPWS) And you have a confession by Mr Bimson!

Many Schools have now started removing references

The Aboriginal Education Committee are in the process of correcting this fiction. AECG

The Northern beaches Councils Mayor Michael Regan also in support after the taxpayer funded report was published in the paper and the report published by the Aboriginal heritage office Filling A Void.

The Federal Member for Warringah Zali Steggall MP is also in support

Daily telegraph "Misunderstanding: The historical fiction of the word Guringai that has filled a void in our knowledge of the original inhabitants by John Morcombe, Manly Daily February 20, 2015 2:41pm."

<https://www.dailytelegraph.com.au/newslocal/northern-beaches/misunderstanding-the-historical-fiction-of-the-word-guringai-that-has-filled-a-void-in-our-knowledge-of-the-original-inhabitants/news-story/b1aec152c74220c535883621081a2fd2>

In a new document, Filling A Void, by the Aboriginal heritage office <http://www.aboriginalheritage.org/news/2015/filling-a-void/> (Funded by the

Tax payer)

And most importantly all the Aboriginal lands Council's on the NSW Coast, The NSW Aboriginal land Council headquarters, (A total of 7) and also not included at this stage another 4 the Northern Aboriginal Land Councils from the Hunter River up to Port Macquarie NSW.

These claims being made by the newly found King Bungaree descendants from Broken Bay NSW (Gadigal Country) needs to be stopped before it destroys our history and Culture of the true Guringai and future generations North of the Hunter River, Port Stephens and Gloucester regions NSW .

The use of the word Guringai, Guringay or spelt Gringai is getting out of hand being claimed by a group calling themselves "**Guringai Tribal Link Aboriginal corporation** on the 11/08/2003" It has also been claimed that Guringai is there language group or tribal name and others (see below) regardless of the report funded by Government "**Filling A Void, by the Aboriginal heritage office.**" and **Northern Councils Mayor**. They are allegedly descendants from Bungaree or through his last wife Cora Gooseberry.

Native Title claim snuffed out

<https://www.newcastleherald.com.au/story/4979410/heartache-after-claim-snuffed-out/>

"The state government recognised the claim group as the descendants of the original inhabitants of the land, but found they were **"unable to prove they had followed their traditional laws and customs continuously since the time of white settlement."** So how did "tribal elder leader of the Guringai tribe" Laurie come to the conclusion he is from the Guringai Tribe and Language group ?

The following Newspaper article is written by JOHN FRASER. This story was long before his print in 1892 totally contradicts his later work 1892 -93 and is proof of where he got the idea from that the Guringai / kuring-gai were one super tribe and **"&c , of Mr Oliver's letter"** , John Fraser said in 1892 **"I assured myself"** that the country thereabout was occupied by subtribes of the Kurring-gai." Fraser has spelt it "Goringai, kuring-gai and Kurig-gi on his map 1892."

1890 JOHN FRASER wrote

Sydney Morning Herald (NSW 1842 - 1954), Thursday 12 June 1890, page 4

TO THE EDITOR OF THE HERALD.

Sir, When the municipalities of the North Shore combine and adopt the native name of their district, as Mr Oliver very fitly suggests, it is to be hoped that the spelling of the name will receive attention. For, although Cammeray is not a monstrosity like Woolloomooloo or Woollahra, yet the spelling of it might be improved. The C should give place to K, for C in English is a redundant letter, representing the sound either of K or of S, and should not be used here in our native words. The termination "eray" might, I think be written "arai," for "ara" and "arai" are established forms in the aboriginal languages. The whole name would thus be Kamarai, which, certainly, is prettier and easier to pronounce than St Leonards. But as our blacks make the "a" and the "o" sounds to be nearly alike, the name might also be written Komaroi; to this we have a parallel in the name Kamilaroi. Mr Oliver is right as to the location of the Kamilaroi tribe. Many years ago, I had the privilege of long and

interesting conversations about that tribe with a gentleman who had been one of the pioneer settlers in their district 50 years ago. He could speak their language "like a native," was called by them Charley Murruba, "Charles the Good," was never molested even in those days by any men of the tribe, and his property was always safe in their hands. He had often travelled the main road from Maitland to the Lower Namoi, and know the country well. The limits of the Kamilaroi dialect, he said, were then the River Gwydir on the north, on the west an irregular line drawn from Walgett, southwards through Coonabarabran and round to Scone on the Hunter, and thence east and north along the Dividing Range to the sources of the Gwydir. Beyond the Gwydir was the Ualaroi dialect, a kin to the Kamilaroi, but yet considerably different from it; to the west the Wirrajery, or Wirradhuri, quite different and to the south and east **the Goringai, also different from the Kamilaroi.**

I know that the Goringai tribe occupied the whole of the east coast from the Hastings and the Manning down to the Hunter, and had several subdivisions named from particular localities in their territory.

These subdivisions correspond with the Cammeray, Cadi, Gwea, **&c, of Mr Oliver's letter,** which were only local portions of one great tribe stretching along the coast from the Hunter, **"probably"** as far south as the Illawarra district. The language of this tribe was distinct from the Kamilaroi, although, like all the Australian dialects, they had many words in common and the same root-word used in different forms or with different applications. For instance, one would say murra (hand), another would apply the word to the whole of the lower arm, including the hand; so also, mir or mil, the eye; mir, the face. The Kamilaroi says kara-ji for wizard, doctor, medicine man, but the **Goringai** says kara-kal. Of course, variations like these are common in all languages.

The kal, of karakal, leads me on to say that cadigal is neither the name of a language nor of a tribe; the gal or kal in this and similar names is merely a suffix equivalent to "belonging to" or "they of," just as we say a Sydneyite, a Londoner, an Aberdonian. An Englishman, in the local aboriginal dialect, would be called England-kal, and an Englishwoman England kalin.

Those who imagine that our aboriginal languages are only rude gibberish, are vastly mistaken. These languages or dialects are one of the unsolved problems of ethnology, but enough is known of them to prove that they have well-defined principles of formation and of grammar which cannot have been the invention of mere savages.

I am, &c, JOHN FRASER.

Then John Fraser 1882-1892 focus was Aboriginal languages. He made **contradictory statements in his 1882** article about his sources of information.

"The tribes with which I am acquainted are chiefly those of the northern half of our territory, the **Goringai**, the Kamilaroi, and the Ooalaroi, and to these I add a slight knowledge of the Wiradjery and Yuin tribes" (Fraser 1882:199-200).

"I owe special acknowledgments to **Mr. C Naseby, Maitland (for the Kamilaroi tribe)** and **Mr. J. W. Boydell, Camyrallyn, Gresford for the Gringai tribe.** Both of these men have **had an intimate acquaintance with these tribes for more than thirty years.**" (Fraser 1882:199 - footnote).

Most of Fraser's notes on the Kamilaroi and Gringai was second hand information from his European informants in Maitland. Also, in his introduction to the **"edited version of Threlkeld's work** on the Awakabal Language", Fraser (1892) provided a "Map of New South Wales as occupied by the Native Tribes" (see Map 3-4). In this map, the Hunter Valley north of Warkworth is included in Kamilaroi, while the more southerly areas around Broke and Maitland are included in Kuring-gai, which is shown as extending along the coast from Bulli in the south just north of Woollongong to almost Port Kempsey.

"This map is the issue of ten years' thought and inquiry on the location of our native tribes; nothing of the kind has been attempted before. The basis of the whole is the boundaries of the Kamalarai tribe, which were marked out **for me by a friend** who knew the tribe well fifty years ago; **his information I have tested and extended by answers I got from others who also** knew the tribe about that time. The Walarai dialect differs only a little from the Kamalarai proper; so also, the Wailwun, spoken by the Ngaiamba blacks; for this reason,

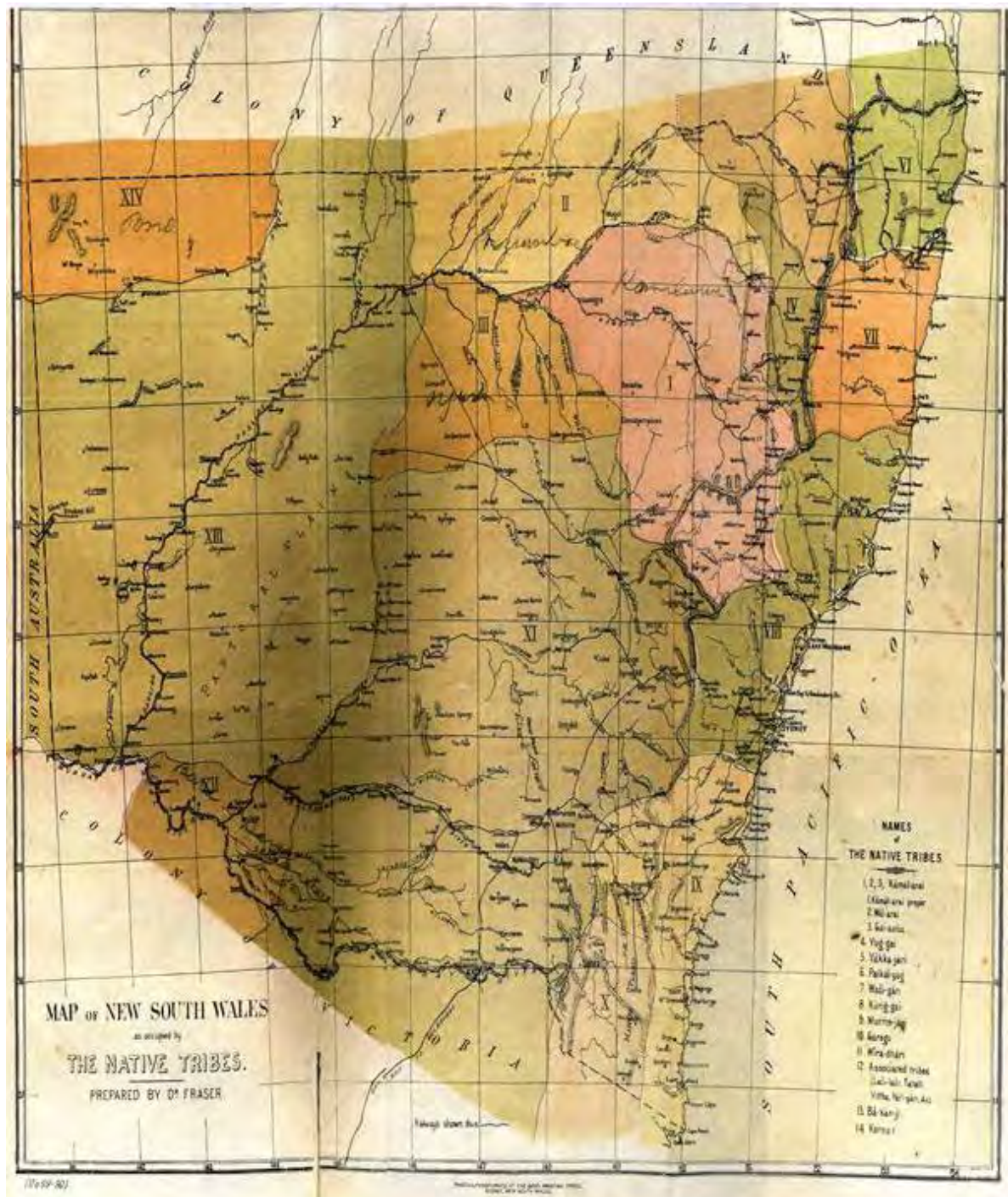
and because they have the classification of the Kamalarai, these are regarded as only subdivisions of the great Kamalarai tribe. The Walarai dialect extends into Queensland.

The next great tribe is the **Kuringgai on the sea coast**. Their 'taurai' (hunting ground or territory)-is known to extend north to the Macleay River, and I found that southwards it reached the Hawkesbury. Then, by examining the remains of the language of the natives about Sydney and southwards, and by other tests, **I assured myself that the country thereabout was occupied by sub-tribes of the Kuringgai."** Fraser 1892:. John Fraser was attempting to map different language groups. He based the entire map upon his understanding of the Kamilaroi language / tribe, and that Awakabal, lower Hunter Valley, north coast, and Sydney and south coast languages were all part of the same language group and therefore "tribe".

Fraser's mapping of the Kamilaroi over this area is said to be based upon information from friends who would have been a **Mr. C. Naseby of Maitland and Mr. J. W. Boydell, Camyrallyn, Gresford mentioned in his 1882 paper) that was "tested and extended by answers I got from others who also knew the tribe about that time", and his own conclusions about the grouping of Aboriginal dialects and languages.**

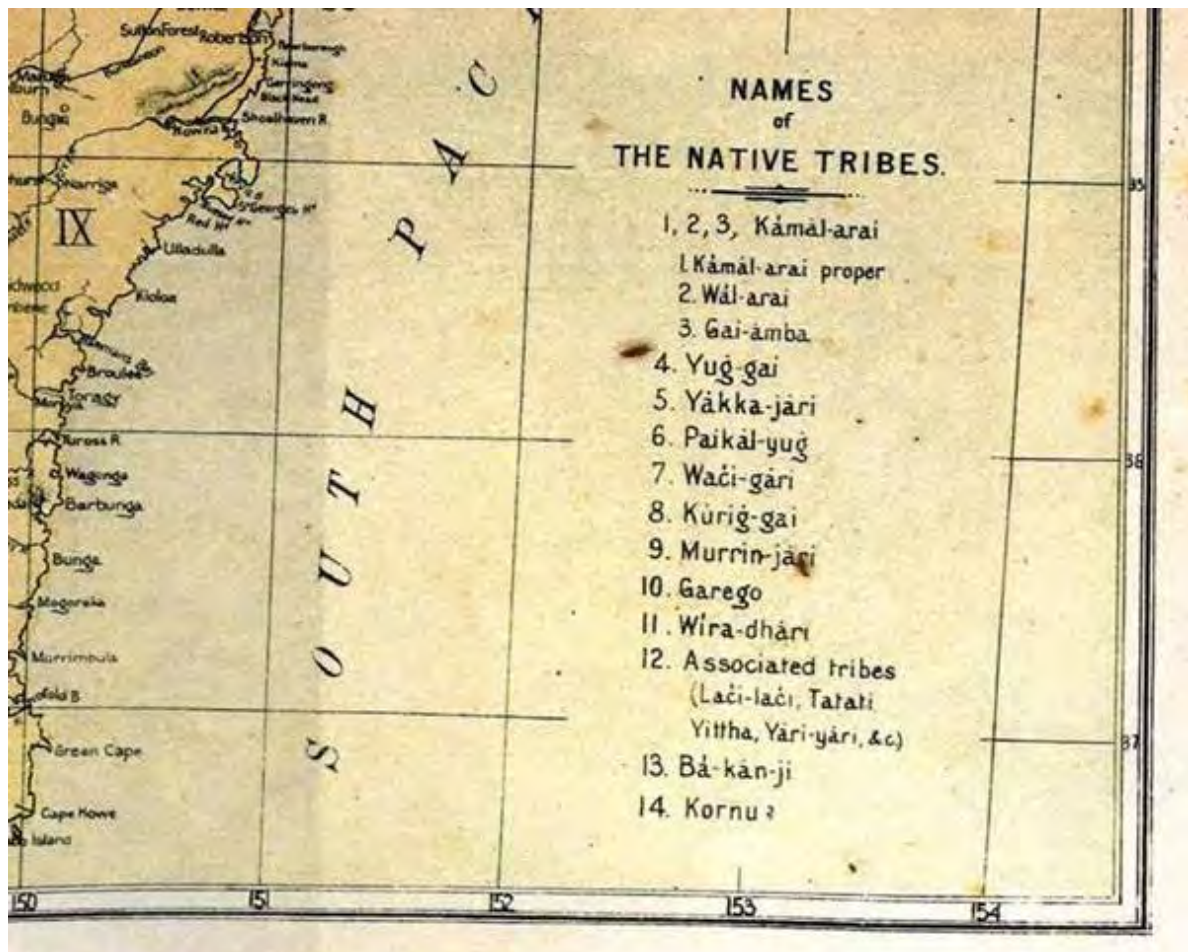
"I owe special acknowledgments to Mr. C Naseby, Maitland (for the Kamilaroi tribe) and Mr. J. W. Boydell, Camyrallyn, Gresford for the Gringai tribe. Both of these men have had an intimate acquaintance with these tribes for more than thirty years." (Fraser 1882:199 - footnote).

Curr (1886-7 showed six different tribes for the same coastal and sub-coastal area as Fraser's (1892) Kurig-gai mapping. Tindale (1974) mapped 11 tribes that intersect this area. Even the generalised map by Matthews (1898) has three groups.



Fraser's (1892) Kurig-gai mapping

He has also spelt **Kurig-gai on this map, Kuringgai** and in 1890 spelt it **Goringai in his "letter to the editor"**. The G and the k are interchangeable in the Kutthung language as most of Fraser's work was provided to him from 2nd sources people who were hearing different sounds in the word Guringai. (see Below)



Maps by R.H. Mathews – 1897-1917

Initiation Ceremonies of Australian Tribes Author(s): R. H. Mathews Source: Proceedings of the American Philosophical Society, Vol. 37, No. 157 (Jan., 1898), pp. 54-73 Published by: American Philosophical Society Stable URL: <https://www.jstor.org/stable/983694> Accessed: 30-03-2020 09:40 UT

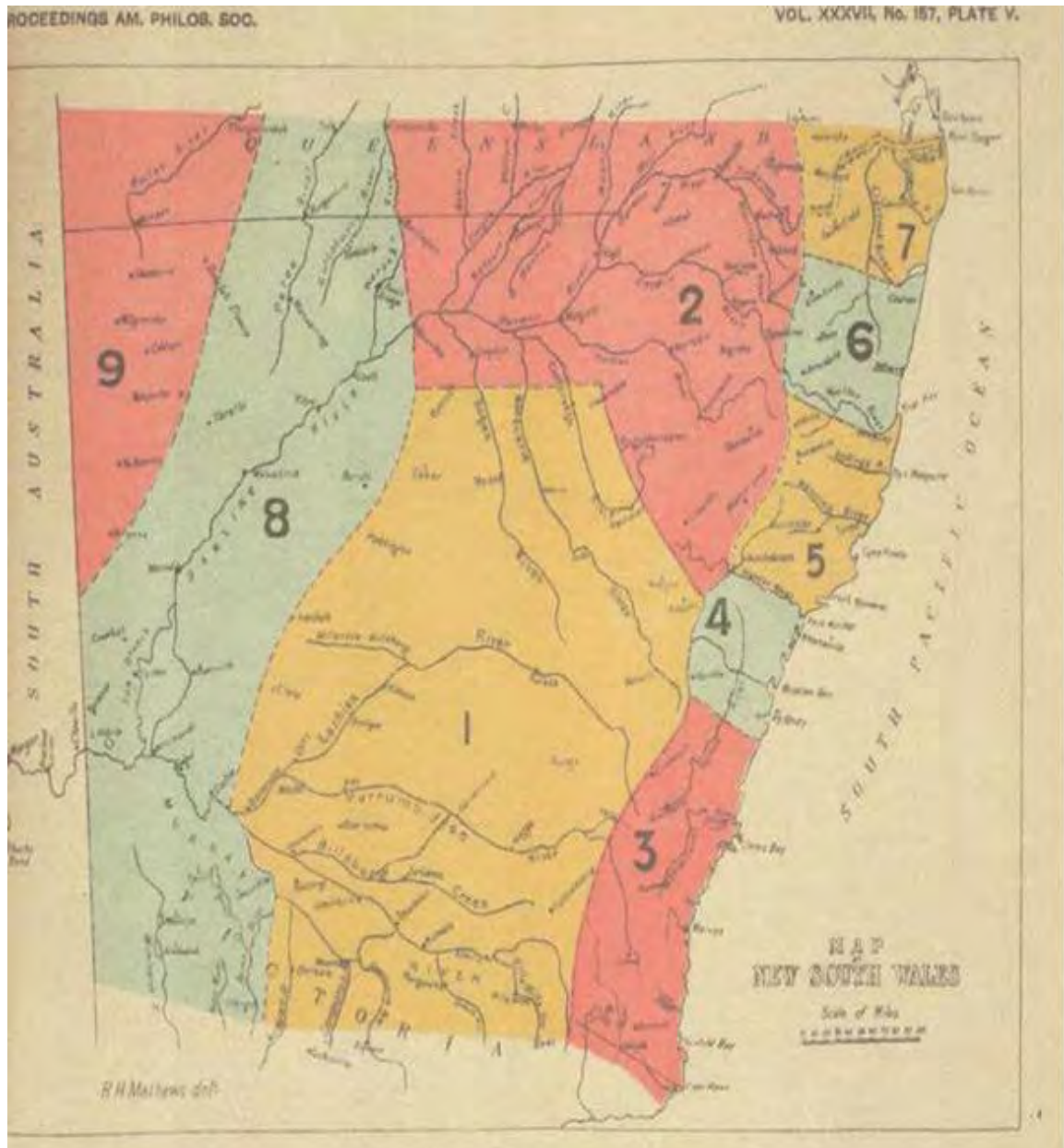
Surveyor and dedicated amateur ethnographer R. H. Mathews published several papers that included consideration of the Hunter Valley and adjacent areas, with a particular focus on the Kamilaroi. The map shown below as Map 3-5 information from Mathews (1898).” Accompanying an article on male initiatory rites, Mathews 1898 had a map (see Map 2) “defining the areas representing the country occupied by each tribe which he numbered 1 to 9.” He also in 1898 in addition noted “the people speaking the different dialects prevalent in each district”. He indicated that:

“No. 2 includes the country of the Kamilaroi [and others]” (1898:67),

“68 MATHEWS--INITIATION IN AUSTRALIAN TRIBES. [March 18,

No. 4 represents the country occupied by the tribes speaking the Darkinung, Wannerawa, **Warrimee**, Wannungine, Dharrook and some other dialects. Their country commences at the Hunter river and extends southerly till it meets and merges into that of the people of No. 3. Their ceremony of initiation is known as the Narramang, which is described in a paper published in Proc. Roy. Soc. Victoria, Vol. x, N. S., pp. 1-12. Their totemic system is dealt with in Journ. Roy. Soc. N. S. Wales, Vol. xxxi, pp. 170-171.

No. 5. Within this area, which extends from the Hunter river almost to the Macleay, the initiation ceremonies are of the Keeparra type described by me in Journ. An/hrop. Ins/. London, Vol. xxvi, pp. 320-340. This tract of country is inhabited by the remnants of the tribes speaking different dialects, some of the most important of which are the following: **Wattung, Gooreenggai**, Minyowa, Molo, Kutthack, Bahree, Karrapath, Birrapee, etc. North of the Hunter river and extending along the sea coast to about Cape Hawk there is an elementary ceremony called Dhalgai,



Ref

Initiation Ceremonies of Australian Tribes Author(s): R. H. Mathews Source: Proceedings of the American Philosophical Society, Vol. 37, No. 157 (Jan., 1898), pp. 54-73 Published by: American Philosophical Society Stable URL: <https://www.jstor.org/stable/983694> Accessed: 30-03-2020 09:40 UT

The Origin, Organization and Ceremonies of the Australian Aborigines Author(s): R. H. Mathews Source: Proceedings of the American Philosophical Society, Vol. 39, No. 164 (Oct. - Dec., 1900), pp. 556-578 Published by: American Philosophical Society Stable URL: <https://www.jstor.org/stable/983776> Accessed: 17-02-2020 10:48 UT

A review of some claims made by descendants from Bungaree or through his last wife Cora Gooseberry in the public domain in regards to Guringai, what tribe they belong to and an email sent to me from Laurie Bimson (there is More)

Have a look two different claims only just recently I have never seen anyone in the middle of a smoking ceremony (shown in the video link) whisper and say " People like to think otherwise , but that's the way it is" or to that effect" Total disregard and disrespect to the real Guringai peoples Northern side Hunter River NSW.

https://www.google.com.au/url?sa=t&rct=j&q=&esrc=s&source=video&cd=2&cad=rja&uact=8&ved=2ahUKEwi926P11cPpAhWDbisKHaL3BegQtwlwAXoECAEQAAQ&url=https%3A%2F%2Fwww.facebook.com%2FstreetbeatHHH%2Fvideos%2Fflaurie-bimson-does-smoking-ceremony-and-welcome-to-country%2F628095611286025%2F%3F_so_%3Dpermalink%26_rv_%3Drelated_videos&usg=AOvVaw3eQj3WR2y03RWPf-TJ_qrr

And this one it's a ripper

<https://www.google.com.au/url?sa=t&rct=j&q=&esrc=s&source=video&cd=6&cad=rja&uact=8&ved=2ahUKEwi926P11cPpAhWDbisKHaL3BegQtwlwBXoECAYQAAQ&url=https%3A%2F%2Fms-my.facebook.com%2Fforestvillemontessorischool%2Fvideos%2Fflaurie-bimson-guringai-man-descendent-of-bungaree-and-elder-of-the-guringai-trib%2F1932596090380724%2F&usg=AOvVaw2CdUmMlffbiFBXShKbtj-k>

I found a book on eBay got it for \$5 Written by the King Bungaree decedents I have scanned pages from the book that shows many things that are conflicting.

Page 4 the discovery of aboriginality,
page 7 "Sarah may have been the daughter of Bungaree"

The information in the book, the information below and all the other information sent to you conflicts with their own story's and even their own story's conflict with their own claims on the internet.

we have another story Jan 20220 <http://www.pittwateronlinenews.com/Guringai-Aboriginal-Tours-Profile.php>

My name is Laurie Bimson. I'm a proud Aboriginal man from what is **known as Guringai country.**

Guringai Country is from Lake Macquarie in the north to the south Lane Cove River, the Ocean on the East and in the West the old northern road just short of Wisemans ferry. There are many clans in Guringai country, **Garigal** being one of them.

we have another claim from Laurie in regards to Guringai at Story Park Community Centre

https://www.facebook.com/streetbeatHHH/videos/laurie-bimson-does-smoking-ceremony-and-welcome-to-country/628095611286025/?so=_permalink&rv=_related_videos

Laurie Bimson "I would like to welcome you to **"Guringai Country"** he then said **"The country is Gadigal"** the people are Guringai" The Nacion is Wannungine." (see attachment Kabook) Guringai spelt **Gooreenggai is on the Northern side of the Hunter river NSW.**

This claim and story totally contradicts his email below and his video at the opening Story Park Community Centre above

<http://www.pittwateronlinenews.com/Guringai-Aboriginal-Tours-Profile.php>

"My name is Laurie Bimson. I'm a proud Aboriginal man from what is known as **Guringai country. Guringai Country is from Lake Macquarie in the north to the south Lane Cove River, the Ocean on the East and in the West the old northern road just short of Wisemans ferry. There are many clans in Guringai country, Garigal being one of them, which is our clan.**"

On this site <https://www.guringaitours.com.au/> They claim

"I'm Laurie Bimson, Guringai man, a descendant of Bungaree, leader of the Guringai tribe"

You have **Neil Evers story a Bungaree descendant printed 2014 Pittwater news before the tax payer funded report filling a void report was published 2015 this story by Neil Evers** who is Laurie Bimsons cousin 2014

<http://www.pittwateronlinenews.com/bungaree-was-flamboyant-by-neil-evers.php>

Acknowledging it is not Guringai Country , people or language.

"Bungaree and his people brought with them their Garigal language, which is now mistakenly called Kuringgai (Guringai), a name first coined by the Reverend John Fraser in 1892 and used by linguist Arthur Capell in 1970 'for convenience'. Neil Evers own words

Laurie Bimson

From: Guringaitours <guringaitours@gmail.com>

Sent: Sunday, 18 August 2019 6:57 PM

To: Bob & Sam <bobsam1@bigpond.net.au>

Subject: Re: Language differences and the use of the word Kuringal. Kuringai. kuringay changed and now referred to Guringai by some in 2015

"Note tribes do things differently we are the salt water people like **my ancestor Bungaree we are part of a nation that goes down to eden near the Victorian border and north to port Stephens and west the mountains there are about**

29 tribes and languages in our nation . I am related to the Gadical the over the harbour through Bungaree last wife Cora Gooseberry”

Regards . Laurie Bimson.

Sent from my iPad

<https://www.guringaitours.com.au/> ” **I am Laurie Bimson, Guringai man**, a descendant of Bungaree, leader of the **Guringai tribe**”

Mr Laurie Bimson is also on the advisory committee for National Parks and Wildlife Service Metro North East, various other advisory committees!

and link to his video, I was told funded by NPWS. –

[https://www.bing.com/videos/search?](https://www.bing.com/videos/search?q=laurie+bimson&&view=detail&mid=73643FF53DFED33CBFD273643FF53DFED33CBFD2&&FORM=VRDGAR)

[q=laurie+bimson&&view=detail&mid=73643FF53DFED33CBFD273643FF53DFED33CBFD2&&FORM=VRDGAR](https://www.bing.com/videos/search?q=laurie+bimson&&view=detail&mid=73643FF53DFED33CBFD273643FF53DFED33CBFD2&&FORM=VRDGAR)

” **I am Laurie Bimson, Guringai man**,

On this web site Mr Laurie Bimson and Mr Neil Evers claim they are direct descendant of the Garigal clan of Guringai language people,

<http://news.navy.gov.au/en/Jul2015/Events/2166/Cameragal-Country-Recognised-at-HMAS-Penguin.htm#.XVjiCnduLIU>

Another web site whom is Laurie Bimson cousin

<http://www.pittwateronlinenews.com/Budawa-Aboriginal-Signage-Group-Profile.php>

Extracts below from the signage group as follows – For Kuringai Chase NSW" The word for man or person is kuri (Koori) and kuringga, the possessive means 'belonging to kuri'. Ngai (ng/guy) means 'woman'. **The name Kuringai now Guringai was coined by ethnographer John Fraser in 1892 as "the original name of the tribal group was not known".**

Another inconsistency <https://historyofaboriginalsydney.edu.au/north-coastal>

“What languages were spoken in this region?”

In 1892 the ethnographer John Fraser used the term ‘Kuringgai’ for a ‘nation’ which he showed extending along the coast north of Sydney Harbour. He said the name Kuring-gai meant ‘men’. **Tracey Howie, 2010 Chairperson of the Guringai Link Aboriginal Corporation, relates that ‘Wannungini is our traditional name’.**

And another <http://www.pittwateronlinenews.com/neil-evers-profile.php> its claimed “**Guringai is your language not the people**”.

Mr Neil Evers, Laurie Bimson Cousin "Until about 4 years ago I was unaware of my ancestry. I am a 5th generation Aboriginal. A cousin that I never knew, Bob Waterer, found all of our family’s history. What a journey we have had. Bob

has recently released a book "The Story of Bob Waterer and his Family 1803-2010" telling the entire story.

I now belong to the Aboriginal Support Group – Manly Warringah Pittwater. The ASG relies on membership monies to help in education of children of all cultures to understand and close the gap. The Guringai Tribal Link (I am a member) **has produced a booklet "Guringai Language for Beginners Vol 1-2"** 10,000 copies have been distributed and schools are looking for more, so I personally would like to help the ASG raise the monies needed to produce more. **I am editor of the group's newsletter, the Elimatta."**

Another web site I found yesterday with another tribal name called the **Deerabin** <https://ninglunbooks.wordpress.com/early-last-century/family-stories-4-a-guringai-family-story-warren-whitfield/>

Family stories 4 — A Guringai Family Story — Warren Whitfield

The family concerned is Warren's mother's family, related to me only by marriage. **Sophy Bungaree was born in Brisbane Water on the northern arm of Broken Bay, Hawkesbury River in around 1810.** At that time the Hawkesbury River was known to the Aboriginal inhabitants as **Deerabin.**

And this story by Neil Evers who is Laurie Bimsons cousin 2014
<http://www.pittwateronlinenews.com/bungaree-was-flamboyant-by-neil-evers.php>

Acknowledging it is not Guringai Country , people or language.

"Bungaree and his people brought with them their **Garigal language**, which is **now mistakenly called Kuringgai (Guringai)**, a name first coined by the Reverend John Fraser in 1892 and **used by linguist Arthur Capell in 1970 'for convenience'**."

And the icing on the cake Laurie Bimsons confession

below in an email from the Director Deon Rensburg The CEO of National Parks and Wildlife Services (NPWS).

Laurie acknowledged that the use of Guringai is not appropriate in the way it is being used in Sydney and said he had been moving away from using it. I discussed with him that we would be looking to remove the term from use in any of our interpretive and other materials as it was incorrect **and he was accepting of this.** Had a similar discussion with Nathan and it sounds like we are all in agreement.

What NPWS will now do is to look to remove all use of the term that denotes a Guringai as a tribe or language group in Northern Sydney) that includes web content, interpretive signs, brochures etc (may take some time to get them all but we will progress as fast as we can). This has commenced. "

Claims made on the public domain (that I can find) all descendants from Bungaree or through his last wife Cora Gooseberry

- 1."Guringai Clan"
 - 2."Guringai language group"
 - 3."Garigal Clan of the Guringai language people"
 4. "The original name of the tribal group was not known"
 5. "Wannungini is our traditional name"
 6. "I am related to the Gadical"
 7. "Hawkesbury River was known to the Aboriginal inhabitants as Deerabin."
- and more

**"The big Questions is how and where did You and they get Guringai From?"
When all recorded History shows Guringai on the Northern side of the Hunter River!!!**

Interesting when you read this information <https://www.wikitree.com/wiki/Bungaree-2> The links to other members of this tree can be read

Bungaree - **Garigal Country** and his wife Matora - (Awabakal) Garigal Country (where do they get Guringai from???)

Bungaree **Bungaree**

Born **1775** in **Garigal Country, Australia** 🇦🇺

Son of Unknown Garigal and [mother unknown]

[sibling(s) unknown]

Husband of Matora (Awabakal) Garigal — married [date unknown] [location unknown]

Husband of **Cora (Gooseberry) Bungaree** — married [date unknown] in Sydney, New South Wales Australia 🇦🇺

DESCENDANTS 🇦🇺

Father of Bowen Bungaree and Sophy (Bungaree) Webb

Cora **Bungaree** formerly **Gooseberry**

Born **about 1777** in **Sydney, New South Wales, Australia** 🇦🇺

Daughter of Moorooobora (Maroubra) Gooseberry and [mother unknown]

[sibling(s) unknown]

Wife of **Bungaree Bungaree** — married [date unknown] in Sydney, New South Wales Australia 🇦🇺

Mother of Bowen Bungaree

Died **30 Jul 1852** in **Sydney, New South Wales Australia** 🇦🇺

Sophy **Webb** formerly **Bungaree**

Born **1810** in **Brisbane Water District, New South Wales, Australia** 🇦🇺

ANCESTORS 🇦🇺

Daughter of Bungaree Bungaree and Matora (Awabakal) Garigal

Sister of Bowen Bungaree [half] and Sarah (Bungaree) Lewis [half]

Wife of **James Webb** — married [date unknown] [location unknown]

DESCENDANTS

Mother of [Charlotte \(Webb\) Ashby](#)

Died 1877 in **New South Wales, Australia** 

References to the Guringai , Gringai or spelt Guringay

[Howitt and Fison Papers](#)

<https://fromthepage.com/tyay/howitt-and-fison-papers/hw0146>

Guringai search

[https://fromthepage.com/display/search?](https://fromthepage.com/display/search?utf8=%E2%9C%93&collection_id=148&search_string=guringai&button=)

[utf8=%E2%9C%93&collection_id=148&search_string=guringai&button=](https://fromthepage.com/display/search?utf8=%E2%9C%93&collection_id=148&search_string=guringai&button=)

Gringai search

[https://fromthepage.com/display/search?](https://fromthepage.com/display/search?utf8=%E2%9C%93&collection_id=148&search_string=gringai&button=)

[utf8=%E2%9C%93&collection_id=148&search_string=gringai&button=](https://fromthepage.com/display/search?utf8=%E2%9C%93&collection_id=148&search_string=gringai&button=)

And Guringay search [https://fromthepage.com/display/search?](https://fromthepage.com/display/search?utf8=%E2%9C%93&collection_id=148&search_string=guringay&button=)

[utf8=%E2%9C%93&collection_id=148&search_string=guringay&button=](https://fromthepage.com/display/search?utf8=%E2%9C%93&collection_id=148&search_string=guringay&button=)

Kind regards

Robert Syron

Registered Aboriginal owner of Worimi Guringai Lands

Australian Rwandan War veteran 1994-95, ANZAC Peace Prize 1995, Meritorious Unit Citation

Guringai language <https://www.youtube.com/watch?v=l0geN8vuoCw>

kabook and Watoo people <https://hunterlivinghistories.com/2018/08/15/the-kabook-watoo/>

We acknowledge the Traditional Lands of the Worimi , Guringai or spelt Guringay and Biripi people of the kutthung language the Custodians, spiritual and cultural owners of these lands. We acknowledge our Elders past and present to all Aboriginal and Torres Strait Islander people. The Gringai continue to practice Culture and have a strong connection to our lands and secrete sites where our ancestors lay in the Barrington / Gloucester Manning Valley area