

NEW PRIMARY SCHOOL IN MURRUMBATEMAN

DRAWING LIST

ARCHITECTURAL

DRAWING NUMBER	DRAWING NAME	Current Revision
MURR - SSDA - 000	COVER SHEET, DRAWING LIST AND LOCATION PLAN	D
MURR - SSDA - 001	SITE PLAN	D
MURR - SSDA - 002	SITE ANALYSIS PLAN	D
MURR - SSDA - 003	SITE DEMOLITION PLAN	D
MURR - SSDA - 005	FENCING PLAN AND DETAILS	D
MURR - SSDA - 011	COMPOSITE PLAN - GROUND FLOOR	D
MURR - SSDA - 012	COMPOSITE PLAN - FIRST FLOOR	D
MURR - SSDA - 021	COMPOSITE PLAN - ROOF PLAN	D
MURR - SSDA - 101	ELEVATIONS - SHEET 1	D
MURR - SSDA - 102	ELEVATIONS - SHEET 2	D
MURR - SSDA - 201	SECTIONS - SHEET 1	D
MURR - SSDA - 301	SHADOW - EXISTING AND PROPOSED - 21 JUNE 9AM	D
MURR - SSDA - 302	SHADOW - EXISTING AND PROPOSED - 21 JUNE 12PM	D
MURR - SSDA - 303	SHADOW - EXISTING AND PROPOSED - 21 JUNE 3PM	D
MURR - SSDA - 401	RENDERS AND MATERIAL BOARD	D
MURR - SSDA - 501	GFA PLANS AND AREA CALCULATION	D



LOCATION PLAN N.T.S (Google Earth Image - April 2021)
SITE AREA: 15434.92m²



PERSPECTIVE VIEW: MAIN ENTRANCE

9/06/2021 1:33:38 PM

AMENDMENTS				DESCRIPTION
REV	BY	DATE	ISSUE	
A	RO	12/03/2021	DRAFT ISSUE	
B	JK	17/05/2021	DRAFT T.O.A	
C	PA	27/05/2021	ISSUED FOR SSDA	
D	PA	09/06/2021	ISSUED FOR SSDA LODGEMENT	

NSW GOVERNMENT Education

PEDAVOLI ARCHITECTS PTY LTD
LEVEL 2
459-468 WATTLE STREET
ULTIMO NSW 2007 AUSTRALIA
TEL: +61 2 9291 0000
WEB: www.pj-a.com.au
NOMINATED ARCHITECT:
VINCE PEDAVOLI
NSW REG. No. 5045

DRAWING NAME
COVER SHEET, DRAWING LIST AND
LOCATION PLAN

PROJECT
NEW PRIMARY SCHOOL IN
MURRUMBATEMAN
FAIRLEY STREET MURRUMBATEMAN

NORTH

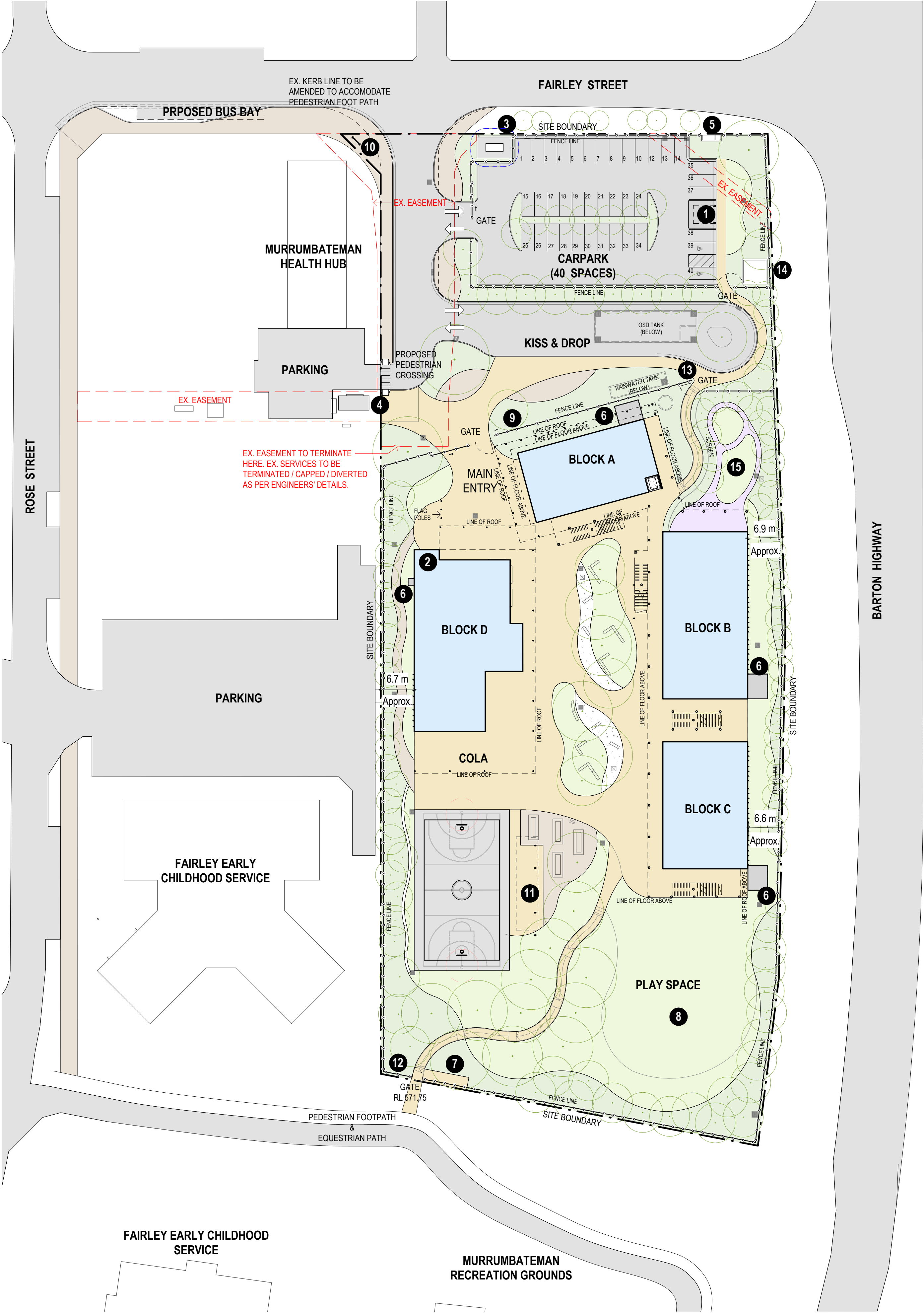
SCALE 1 : 10 @ A1
09 JUNE 2021

PROJECT	PHASE	SERIES NUMBER	REVISION
MURR - SSDA - 000			D

SITE PLANNING

- 1. Waste Pad
- 2. Main Switchboard Room
- 3. Substation
- 4. Existing Substation
- 5. Fire Boosters
- 6. Plant with Screen
- 7. Bicycle Parking (36 parking spots)
- 8. Play Space
- 9. Main School Sign
- 10. Electronic School Sign
- 11. Shade Structure
- 12. Secondary Entrance
- 13. S.E.L.U & Secondary Entrance
- 14. Fire Booster Pump Room
- 15. S.E.L.U Play Space

*Refer to drawing 005 for the fence details



9/06/2021 2:28:35 PM

AMENDMENTS				DESCRIPTION
REV	BY	DATE		
A	JK	06/05/2021	DRAFT SSDA	
B	JK	17/05/2021	DRAFT T.O.A	
C	PA	27/05/2021	ISSUED FOR SSDA	
D	PA	09/06/2021	ISSUED FOR SSDA LODGEMENT	



PEDAVOLI ARCHITECTS PTY LTD
LEVEL 2
458-468 WATTLE STREET
ULTIMO NSW 2007 AUSTRALIA
TEL: +61 2 9291 0000
WEB: www.pj-a.com.au
NOMINATED ARCHITECT:
VINCE PEDAVOLI
NSW REG. No. 5045



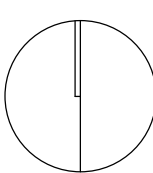
DRAWING NAME

SITE PLAN

PROJECT

NEW PRIMARY SCHOOL IN
MURRUMBATEMAN
FAIRLEY STREET MURRUMBATEMAN

NORTH



5000 10000 15000 20000 25000 50000				SCALE 1 : 500 @ A1
				09 JUNE 2021
PROJECT	PHASE	SERIES NUMBER	REVISION	
MURR - SSDA - 001			D	

9/06/2021 1:34:25 PM

AMENDMENTS				
REV	BY	DATE	DESCRIPTION	
A	JK	06/05/2021	DRAFT SSDA	
B	JK	17/05/2021	DRAFT T.O.A	
C	PA	27/05/2021	ISSUED FOR SSDA	
D	PA	09/06/2021	ISSUED FOR SSDA LODGEMENT	



PEDAVOLI ARCHITECTS PTY LTD
LEVEL 2
458-468 WATTLE STREET
ULTIMO NSW 2007 AUSTRALIA
TEL: +61 2 9291 0000
WEB: www.pp-a.com.au
NOMINATED ARCHITECT:
VINCE PEDAVOLI
NSW REG. No. 5045



SITE ANALYSIS PLAN

NEW PRIMARY SCHOOL IN
MURRUMBATEMAN
FAIRLEY STREET MURRUMBATEMAN

10000 20000 30000 40000 50000 100000

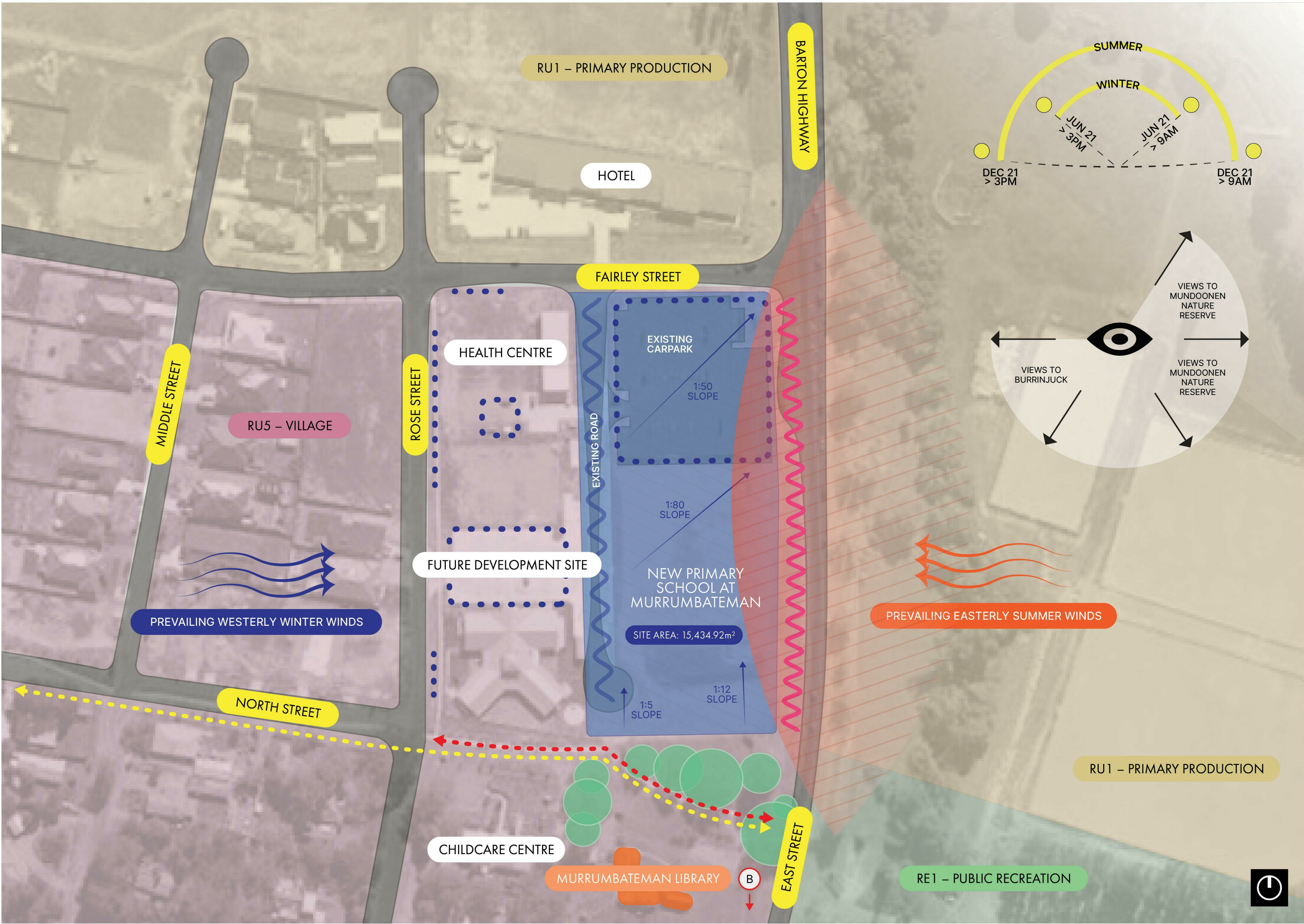
SCALE 1 : 1000 @ A1

09 JUNE 2021

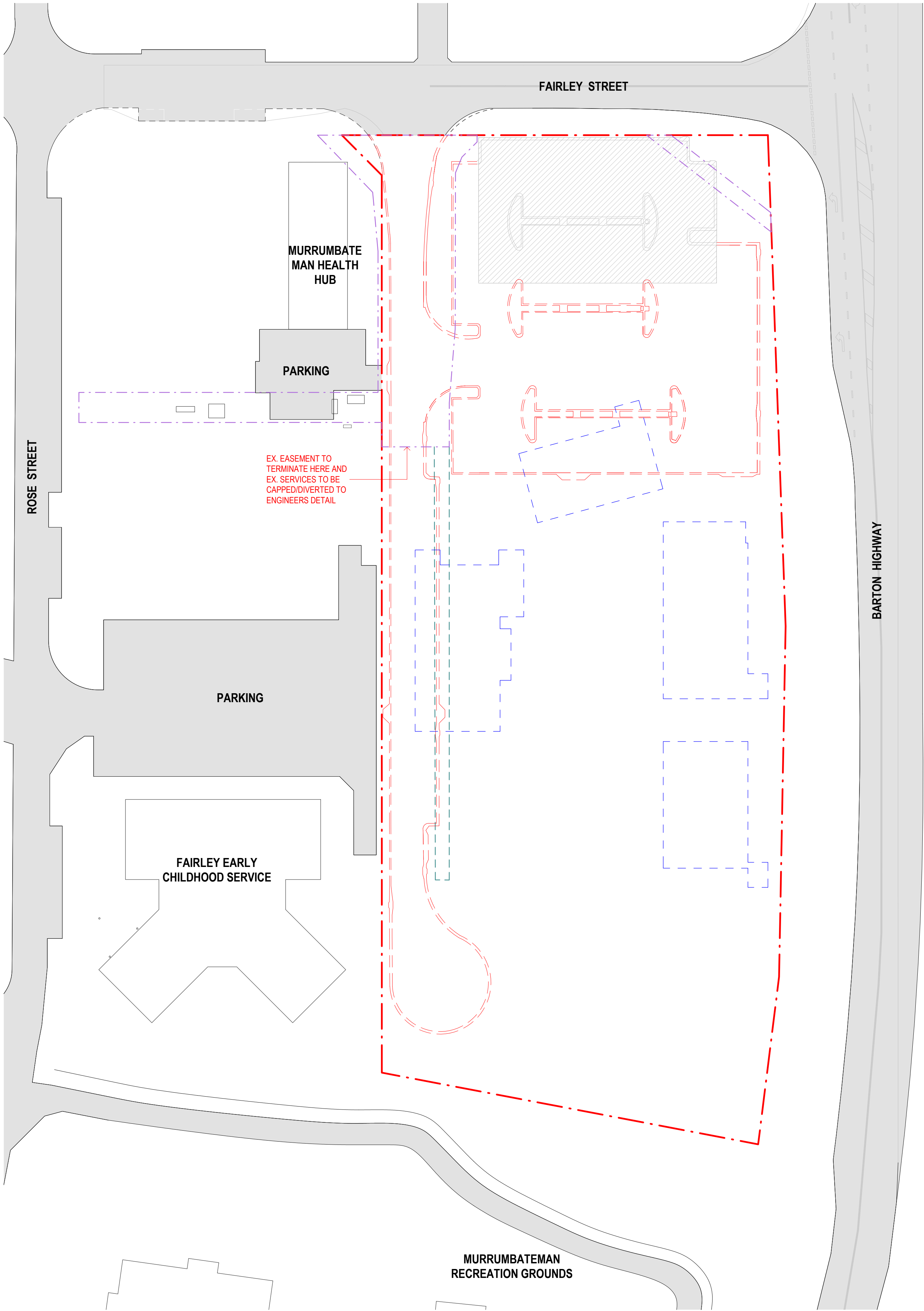
PROJECT	PHASE	SERIES NUMBER	REVISION
MURR - SSDA - 002			D

Legend

Subject Site	
Subject to Bushfire Attack Level 12.5	
I111 Local Heritage Item	
Carparking	
Existing Bus Stop 150m South on Hwy	
Zoning RU5 - Village	
Zoning RU1 - Primary Production	
Zoning RE1 - Public Recreation	
Privacy Concerns (Overlooking/Noise)	
Traffic and Noise Issues	
Desirable Views	
Walking Pathway	
Equestrian Path	
Trees	



- SITE BOUNDARY
- PARKING / ROADS TO BE RETAINED
- PARKING / ROADS TO BE DEMOLISHED
- PROPOSED BUILDING FOOTPRINT
- EASEMENT TO BE RETAINED
- EASEMENT TO BE REMOVED



9/06/2021 1:34:37 PM

AMENDMENTS				DESCRIPTION
REV	BY	DATE		
A	JK	06/05/2021	DRAFT SSDA	
B	JK	17/05/2021	DRAFT T.O.A	
C	PA	27/05/2021	ISSUED FOR SSDA	
D	PA	09/06/2021	ISSUED FOR SSDA LODGEMENT	

NSW GOVERNMENT | Education

PEDAVOLI ARCHITECTS PTY LTD
LEVEL 2
459-468 WATTLE STREET
ULTIMO NSW 2007 AUSTRALIA
TEL: +61 2 9291 0000
WEB: www.pj-a.com.au
NOMINATED ARCHITECT:
VINCE PEDAVOLI
NSW REG. No. 5045

DRAWING NAME

SITE DEMOLITION PLAN

PROJECT

NEW PRIMARY SCHOOL IN MURRUMBATEMAN

FAIRLEY STREET MURRUMBATEMAN

NORTH

SCALE 1 : 500 @ A1

PROJECT	PHASE	SERIES NUMBER	REVISION
MURR - SSDA - 003			D

09 JUNE 2021

LEGEND

SITE BOUNDARY

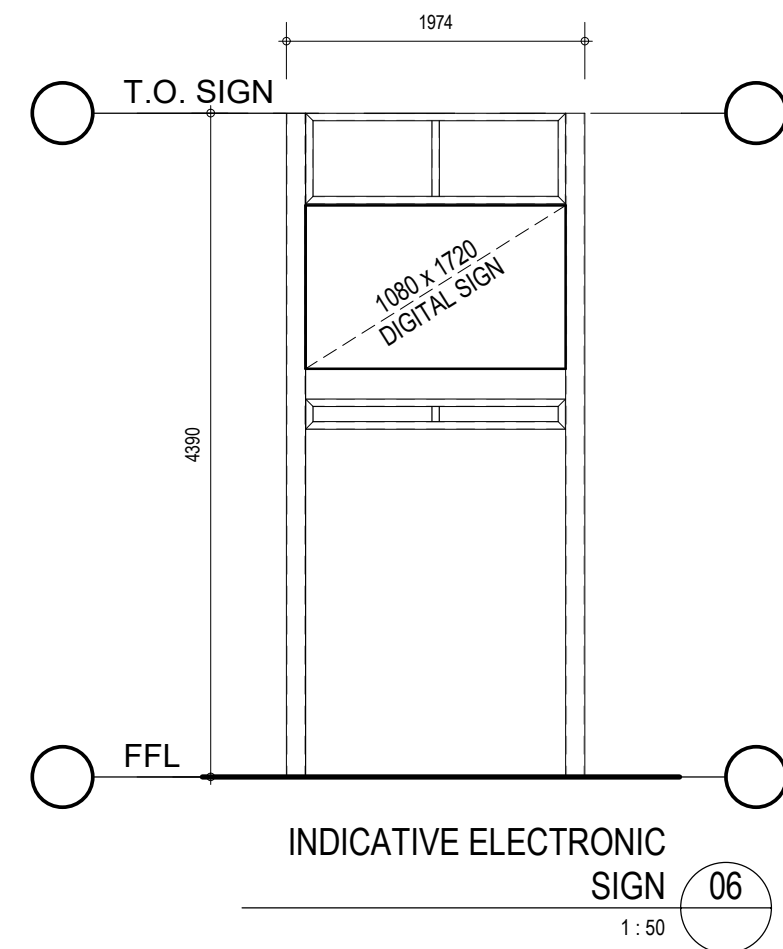
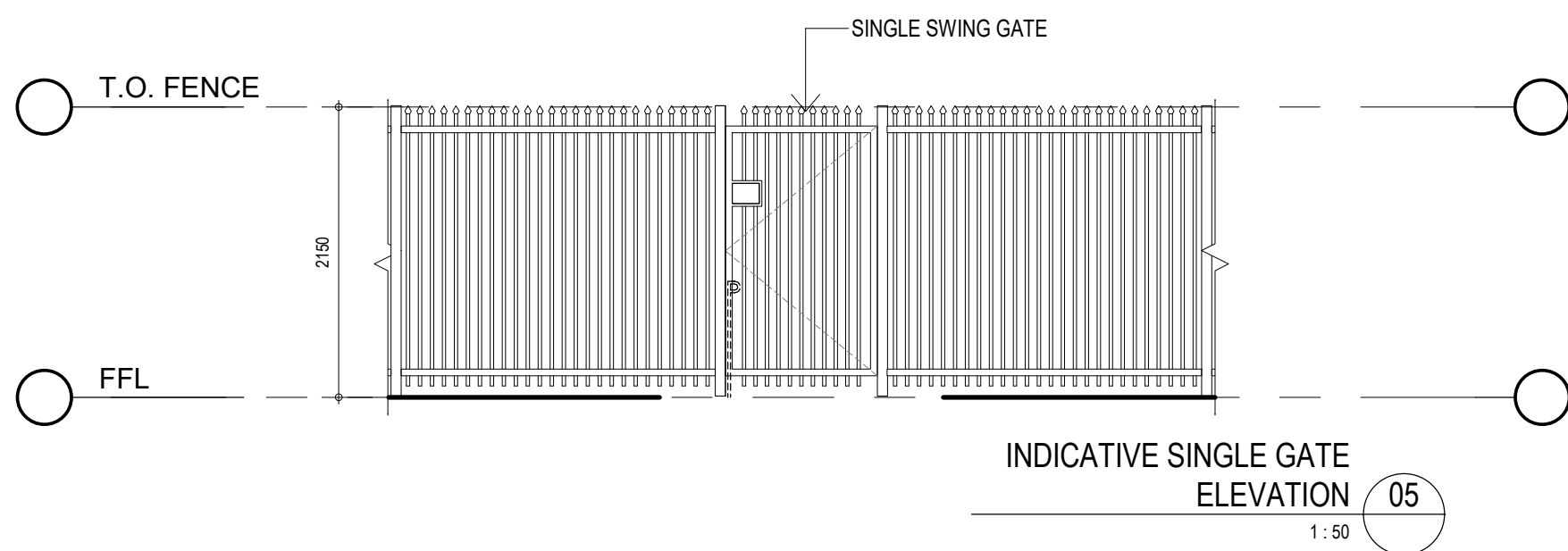
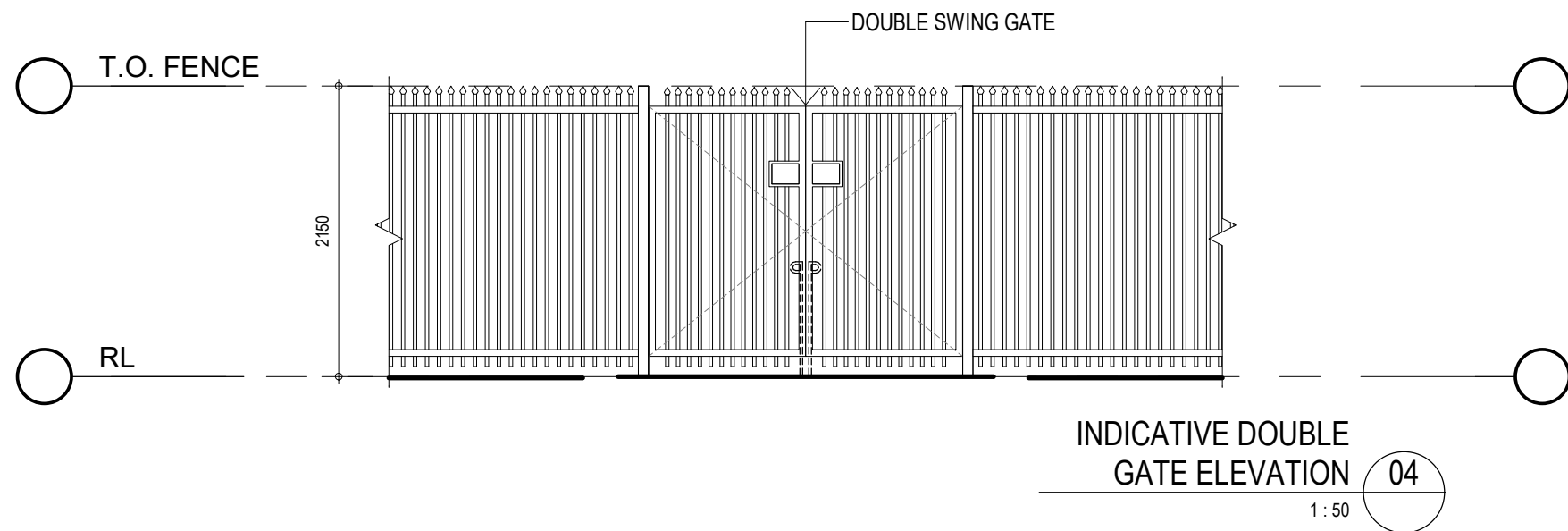
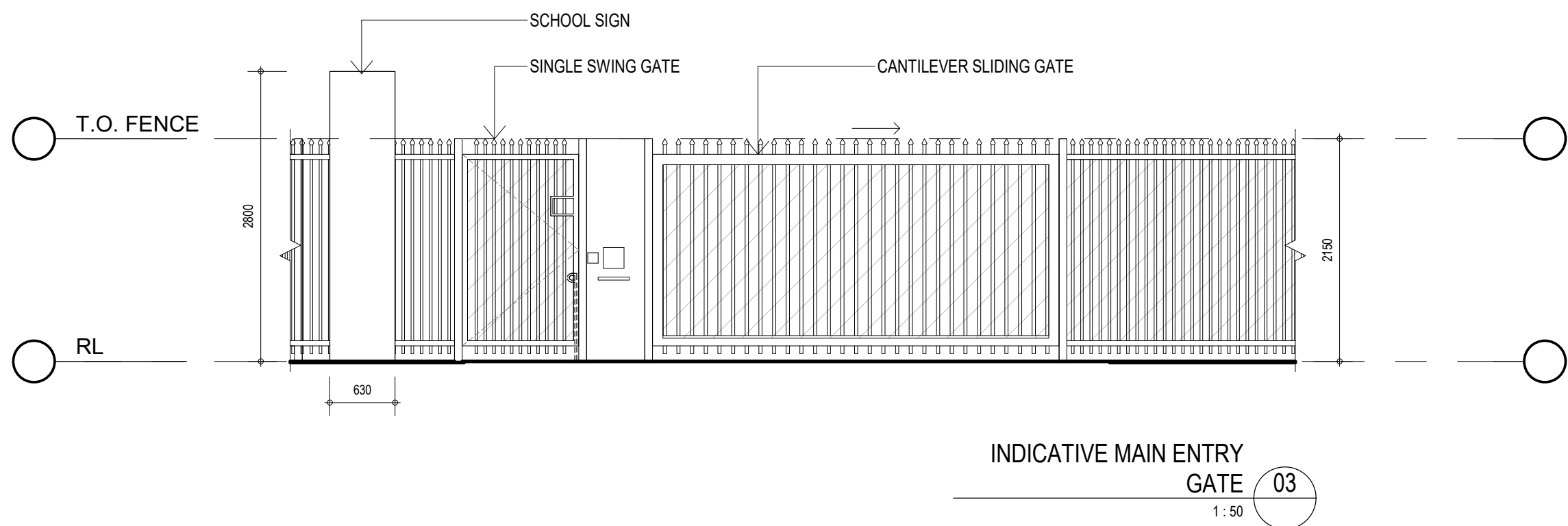
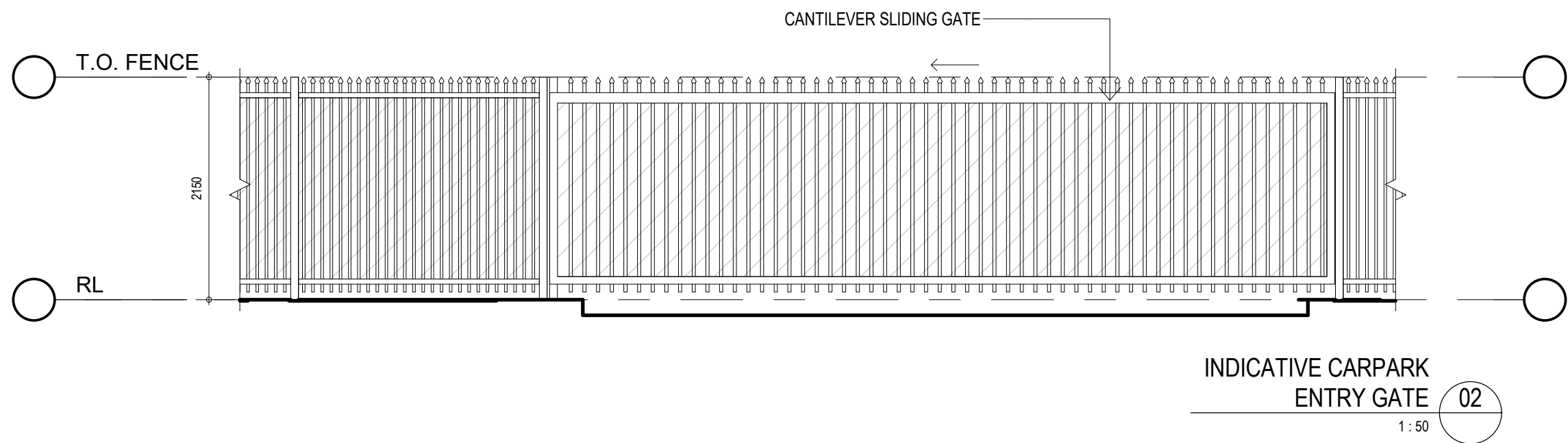
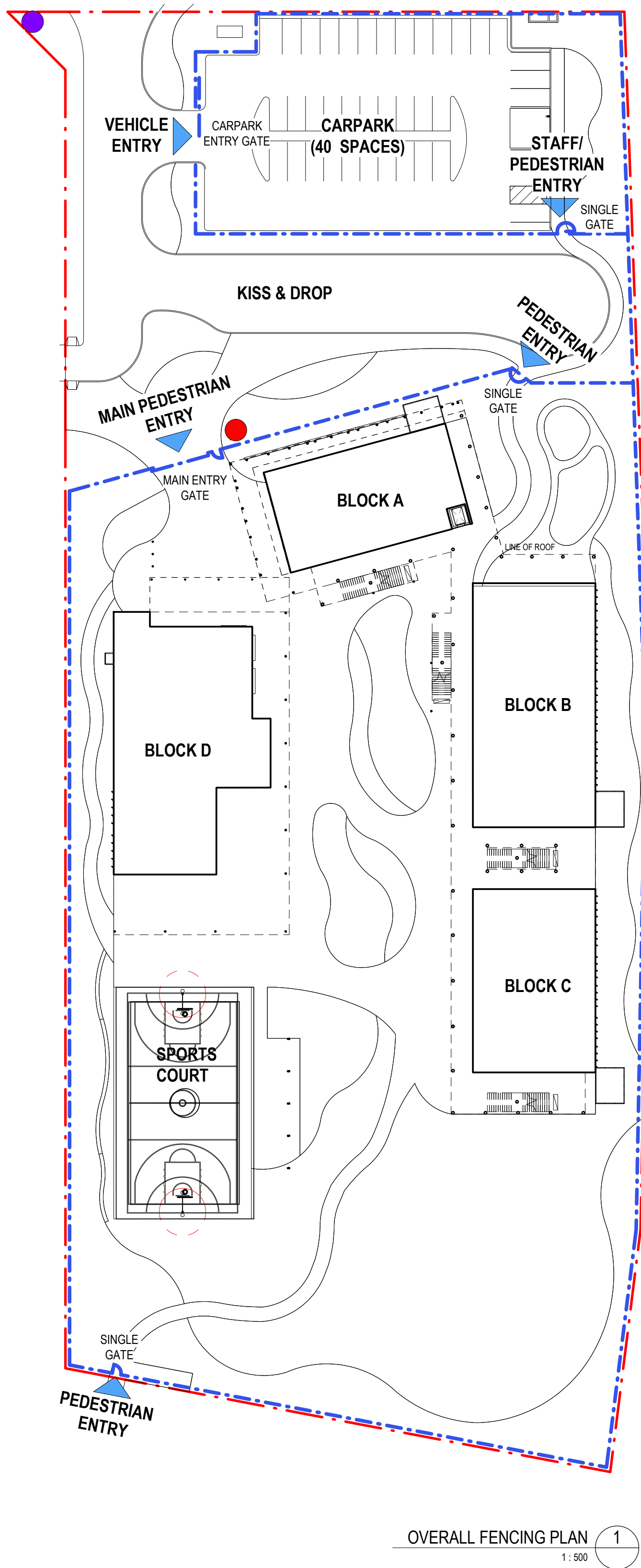
SCHOOL SECURITY FENCE 1200mm HIGH

SCHOOL SECURITY UNIT FENCE 2150mm HIGH 'DIPLOMAT' TYPE

SCHOOL ENTRY POINTS

SCHOOL SIGNAGE

ELECTRONIC SIGNAGE



9/06/2021 1:34:52 PM

AMENDMENTS					DESCRIPTION
REV	BY	DATE	DATE	DATE	
A	JK	06/05/2021			DRAFT SSDA
B	JK	17/05/2021			DRAFT T.O.A
C	PA	27/05/2021			ISSUED FOR SSDA
D	PA	09/06/2021			ISSUED FOR SSDA LODGEMENT

HANSEN YUNCKEN

NSW GOVERNMENT

Education

PEDAVOLI ARCHITECTS PTY LTD

LEVEL 2
459-468 WATTLE STREET
ULTIMO NSW 2007 AUSTRALIA

TEL: +61 2 9291 0000
WEB: www.pp-a.com.au

NOMINATED ARCHITECT:
VINCE PEDAVOLI
NSW REG. No. 5045

FENCING PLAN AND DETAILS

NEW PRIMARY SCHOOL IN MURRUMBATEMAN
FAIRLEY STREET MURRUMBATEMAN

NORTH

SCALE As indicated @ A1

09 JUNE 2021

PROJECT

PHASE

SERIES NUMBER

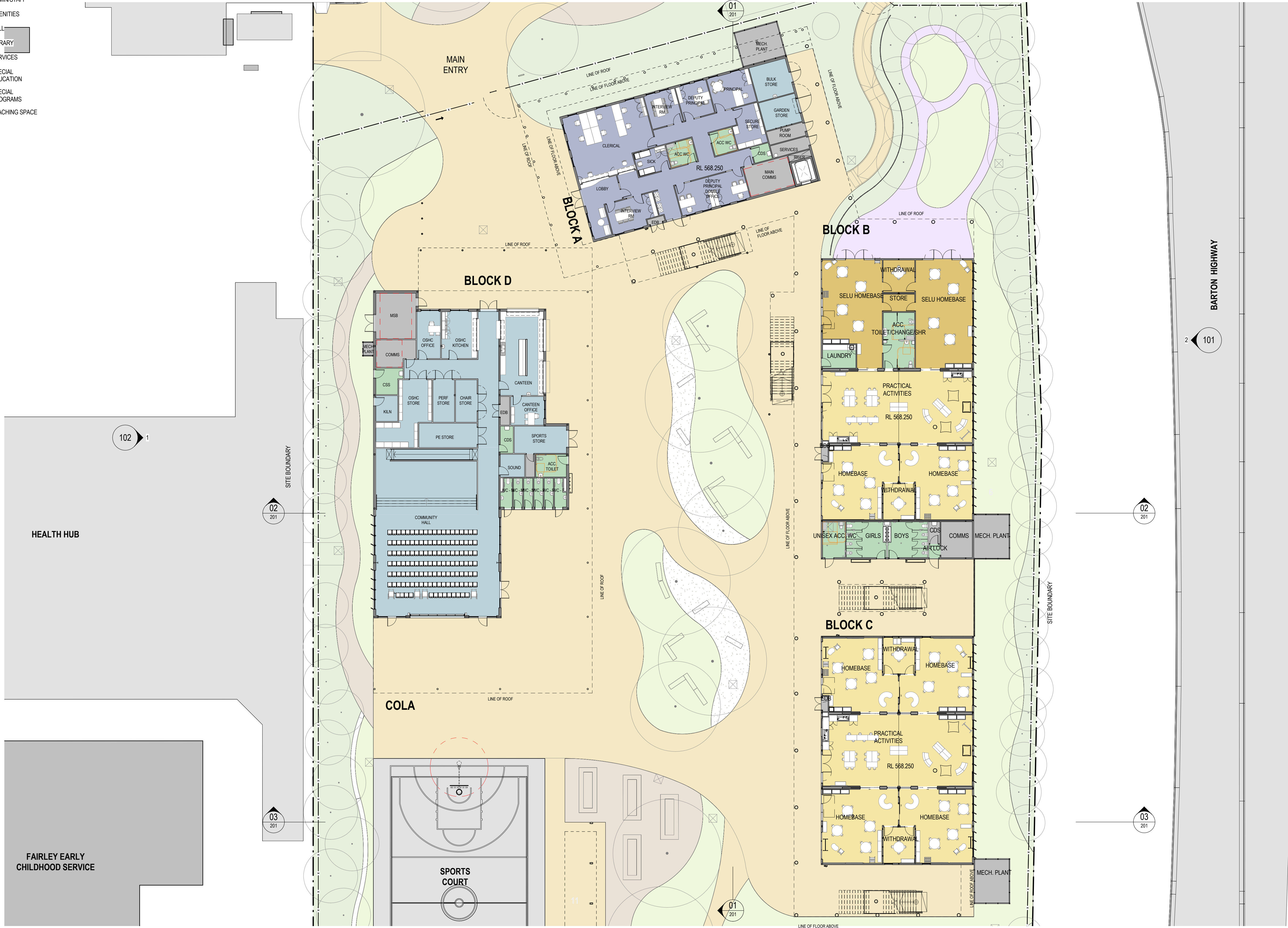
REVISION

MURR - SSDA - 005

D

LEGEND:

- ADMIN/STAFF
- AMENITIES
- HALL
- LIBRARY
- SERVICES
- SPECIAL EDUCATION
- SPECIAL PROGRAMS
- TEACHING SPACE



9/06/2021 2:30:20 PM

AMENDMENTS		DATE	DESCRIPTION
REV	BY		
A	JK	06/05/2021	DRAFT SSDA
B	JK	17/05/2021	DRAFT T.O.A
C	PA	27/05/2021	ISSUED FOR SSDA
D	PA	09/06/2021	ISSUED FOR SSDA LODGEMENT

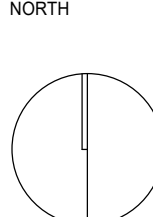


PEDAVOLI ARCHITECTS PTY LTD
LEVEL 2
459-468 WATTLE STREET
ULTIMO NSW 2007 AUSTRALIA
TEL: +61 2 9291 0000
WEB: www.pp-a.com.au
NOMINATED ARCHITECT:
VINCE PEDAVOLI
NSW REG. No. 5045



DRAWING NAME
COMPOSITE PLAN - GROUND
FLOOR

PROJECT
NEW PRIMARY SCHOOL IN
MURRUMBATEMAN
FAIRLEY STREET MURRUMBATEMAN



SCALE 1 : 200 @ A1			
09 JUNE 2021			
PROJECT	PHASE	SERIES NUMBER	REVISION
MURR - SSDA - 011			D

LEGEND:

- ADMIN/STAFF
- AMENITIES
- HALL
- LIBRARY
- SERVICES
- SPECIAL EDUCATION
- SPECIAL PROGRAMS
- TEACHING SPACE

102 1

02 201

03 201

01 201

2 101

1 006

9/06/2021 1:37:49 PM



BLOCK D

BLOCK A

BLOCK B

BLOCK C

AMENDMENTS				DESCRIPTION
REV	BY	DATE		
A	JK	06/05/2021	DRAFT SSDA	
B	JK	17/05/2021	DRAFT T.O.A	
C	PA	27/05/2021	ISSUED FOR SSDA	
D	PA	09/06/2021	ISSUED FOR SSDA LODGEMENT	

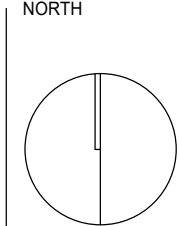


PEDAVOLI ARCHITECTS PTY LTD
LEVEL 2
459-468 WATTLE STREET
ULTIMO NSW 2007 AUSTRALIA
TEL: +61 2 9291 0000
WEB: www.pp-a.com.au
NOMINATED ARCHITECT:
VINCE PEDAVOLI
NSW REG. No. 5045



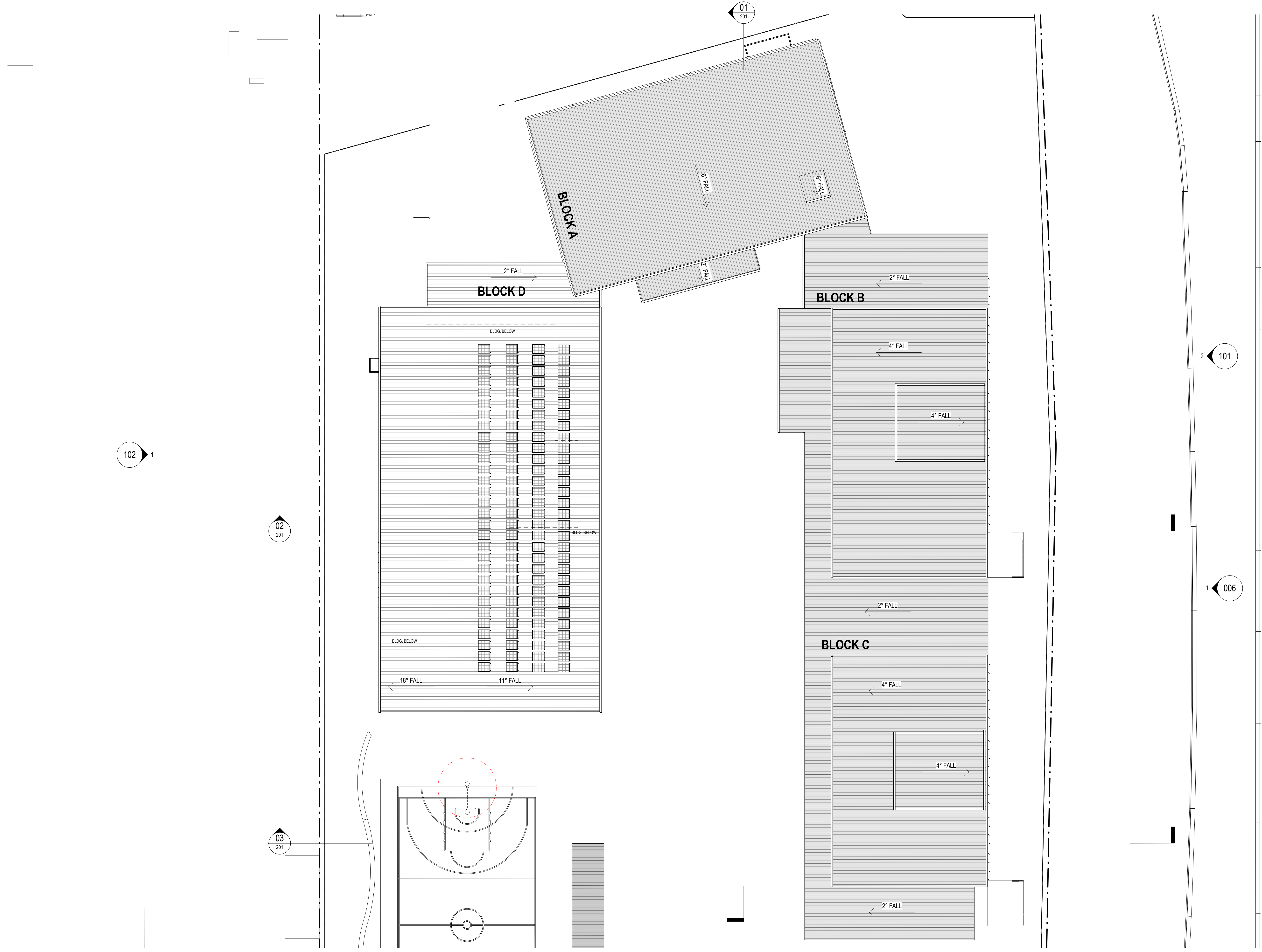
DRAWING NAME
COMPOSITE PLAN - FIRST FLOOR

PROJECT
NEW PRIMARY SCHOOL IN MURRUMBATEMAN
FAIRLEY STREET MURRUMBATEMAN



SCALE 1 : 200 @ A1			
09 JUNE 2021			
PROJECT	PHASE	SERIES NUMBER	REVISION
MURR - SSDA - 012			D

9/06/2021 1:38:10 PM



AMENDMENTS				DESCRIPTION
REV	BY	DATE		
A	JK	06/05/2021	DRAFT SSDA	
B	JK	17/05/2021	DRAFT T.O.A	
C	PA	27/05/2021	ISSUED FOR SSDA	
D	PA	09/06/2021	ISSUED FOR SSDA LODGEMENT	

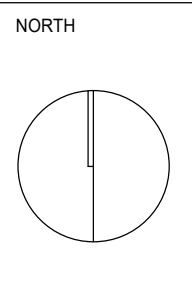


PEDAVOLI ARCHITECTS PTY LTD
LEVEL 2
458-468 WATTLE STREET
ULTIMO NSW 2007 AUSTRALIA
TEL: +61 2 9291 0000
WEB: www.pp-a.com.au
NOMINATED ARCHITECT:
VINCE PEDAVOLI
NSW REG. No. 5045



DRAWING NAME
COMPOSITE PLAN - ROOF PLAN

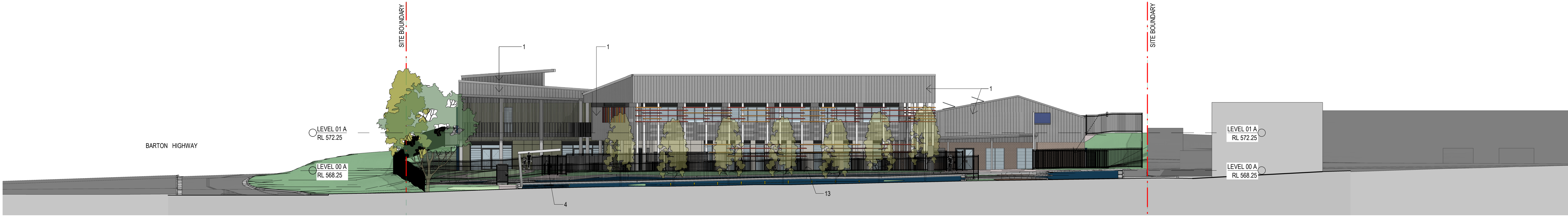
PROJECT
NEW PRIMARY SCHOOL IN MURRUMBATEMAN
FAIRLEY STREET MURRUMBATEMAN



NORTH

SCALE 1 : 200 @ A1
09 JUNE 2021

PROJECT	PHASE	SERIES NUMBER	REVISION
MURR - SSDA - 021			D



NORTH ELEVATION - FAIRLEY STREET 1
1 : 200



EAST ELEVATION - BARTON HIGHWAY 2
1 : 200



SOUTH ELEVATION 3
1 : 200

9/06/2021 1:46:14 PM

AMENDMENTS				
REV	BY	DATE	DRAFT	SSDA
A	JK	06/05/2021	DRAFT	SSDA
B	JK	17/05/2021	DRAFT	T.O.A.
C	PA	27/05/2021	ISSUED	FOR SSDA
D	PA	09/06/2021	ISSUED	FOR SSDA LODGEMENT



PEDAVOLI ARCHITECTS PTY LTD
LEVEL 2
459-468 WATTLE STREET
ULTIMO NSW 2007 AUSTRALIA
TEL: +61 2 9291 0000
WEB: www.pj-a.com.au
NOMINATED ARCHITECT:
VINCE PEDAVOLI
NSW REG. No. 5045



ELEVATIONS - SHEET 1

NEW PRIMARY SCHOOL IN
MURRUMBATEMAN
FAIRLEY STREET MURRUMBATEMAN

2000 4000 6000 8000 10000 20000			
SCALE 1 : 200 @ A1			
09 JUNE 2021			
PROJECT	PHASE	SERIES NUMBER	REVISION
MURR - SSDA - 101			D

9/06/2021 1:48:53 PM



WEST ELEVATION 1
1:200 011

AMENDMENTS				DESCRIPTION
REV	BY	DATE		
A	JK	06/05/2021	DRAFT SSDA	
B	JK	17/05/2021	DRAFT T.O.A	
C	PA	27/05/2021	ISSUED FOR SSDA	
D	PA	09/06/2021	ISSUED FOR SSDA LODGEMENT	



PEDAVOLI ARCHITECTS PTY LTD
LEVEL 2
459-468 WATTLE STREET
ULTIMO NSW 2007 AUSTRALIA
TEL: +61 2 9291 0000
WEB: www.pp-a.com.au
NOMINATED ARCHITECT:
VINCE PEDAVOLI
NSW REG. No. 5045



ELEVATIONS - SHEET 2

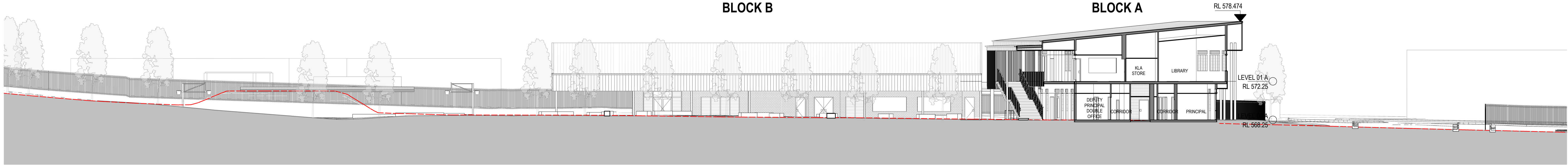
NEW PRIMARY SCHOOL IN
MURRUMBATEMAN
FAIRLEY STREET MURRUMBATEMAN

2000 4000 6000 8000 10000 20000

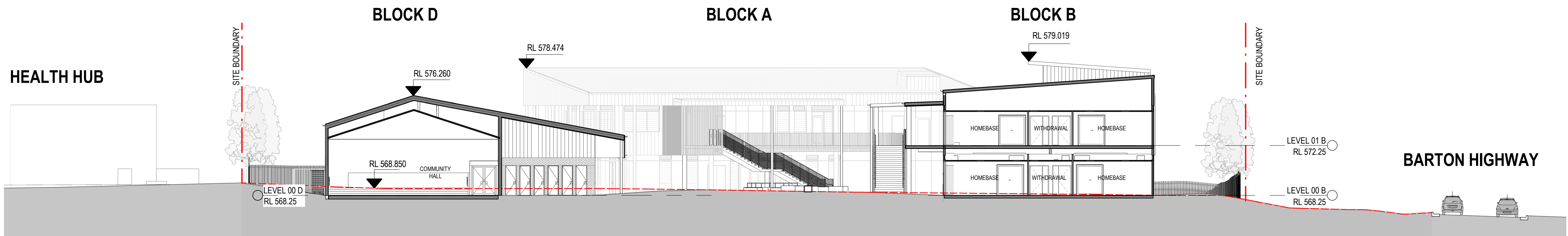
SCALE 1 : 200 @ A1

09 JUNE 2021

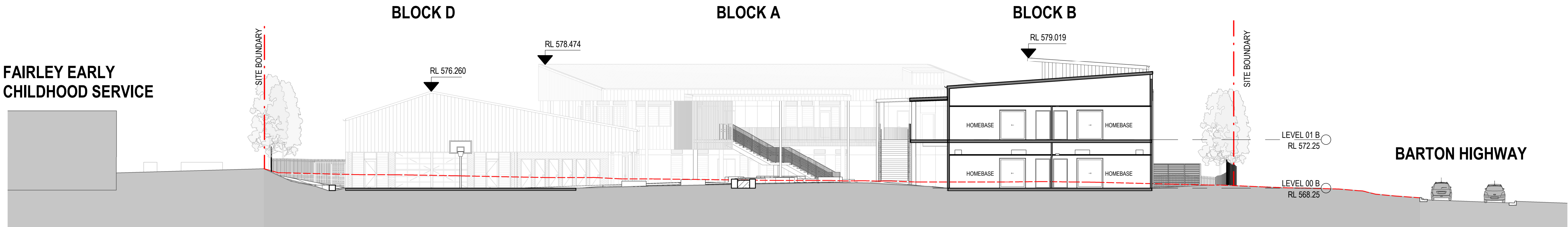
PROJECT	PHASE	SERIES NUMBER	REVISION
MURR - SSDA - 102			D



SITE SECTION 1 01
1:200 011



SITE SECTION 2 02
1:200 011



SITE SECTION 3 03
1:200 011

9/06/2021 1:49:34 PM

AMENDMENTS				DESCRIPTION
REV	BY	DATE		
A	JK	06/05/2021	DRAFT SSDA	
B	JK	17/05/2021	DRAFT T.O.A	
C	PA	27/05/2021	ISSUED FOR SSDA	
D	PA	09/06/2021	ISSUED FOR SSDA LODGEMENT	



PEDAVOLI ARCHITECTS PTY LTD
LEVEL 2
458-468 WATTLE STREET
ULTIMO NSW 2007 AUSTRALIA
TEL: +61 2 9291 0000
WEB: www.pp-a.com.au
NOMINATED ARCHITECT:
VINCE PEDAVOLI
NSW REG. No. 5045



SECTIONS - SHEET 1

NEW PRIMARY SCHOOL IN
MURRUMBATEMAN
FAIRLEY STREET MURRUMBATEMAN

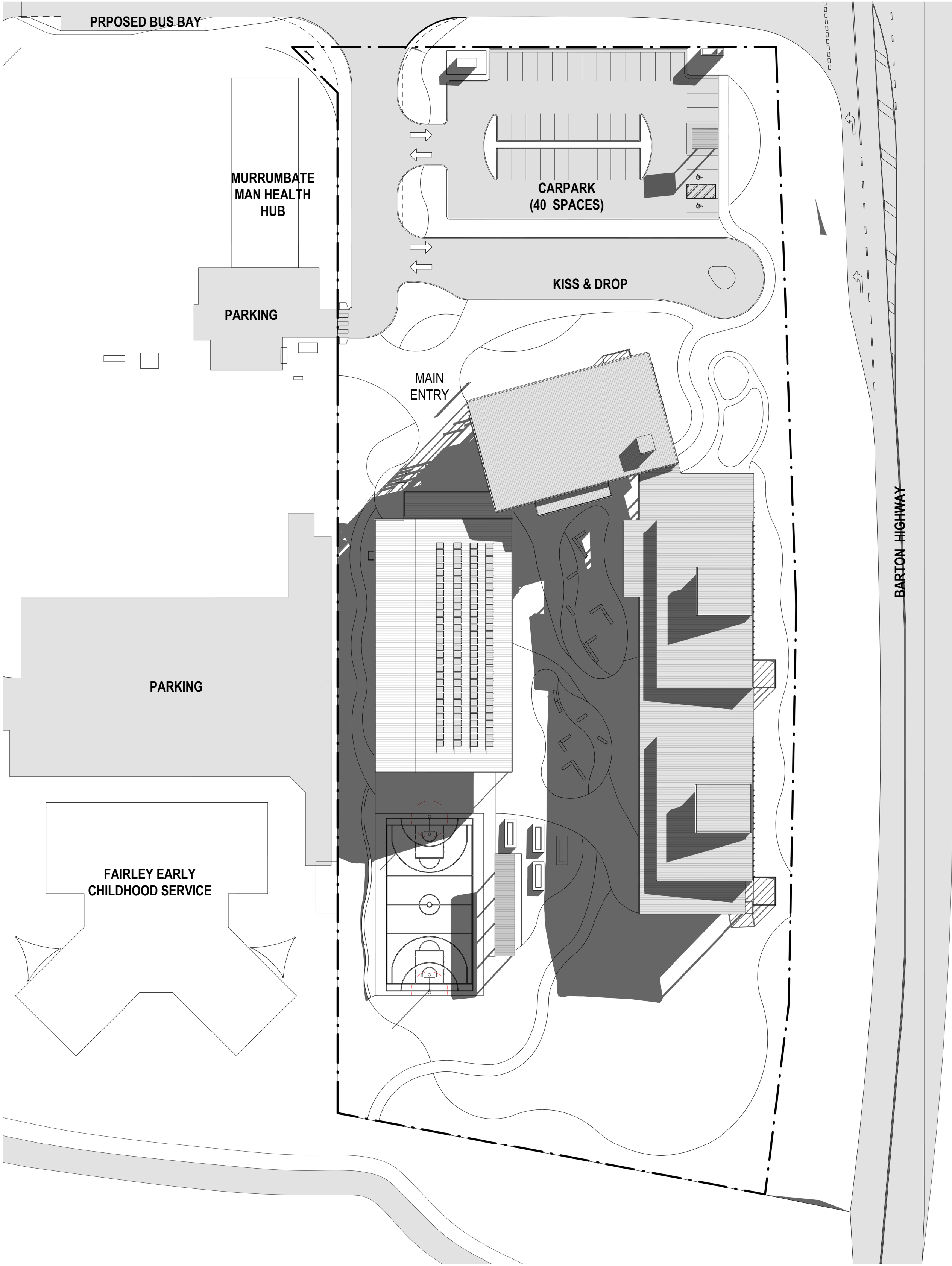
2000 4000 6000 8000 10000 20000

SCALE 1:200 @ A1

09 JUNE 2021

PROJECT	PHASE	SERIES NUMBER	REVISION
MURR - SSDA - 201			D

9/06/2021 1:50:14 PM



AMENDMENTS				DESCRIPTION
REV	BY	DATE		
A	JK	06/05/2021	DRAFT SSDA	
B	JK	17/05/2021	DRAFT T.O.A	
C	PA	27/05/2021	ISSUED FOR SSDA	
D	PA	09/06/2021	ISSUED FOR SSDA LODGEMENT	

HANSEN YUNCKEN

**NSW**
GOVERNMENT

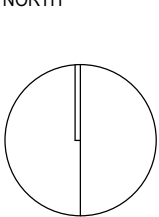
Education

PEDAVOLI ARCHITECTS PTY LTD
LEVEL 2
459-468 WATTLE STREET
ULTIMO NSW 2007 AUSTRALIA
TEL: +61 2 9291 0000
WEB: www.pda.com.au
NOMINATED ARCHITECT:
VINCE PEDAVOLI
NSW REG. No. 5045



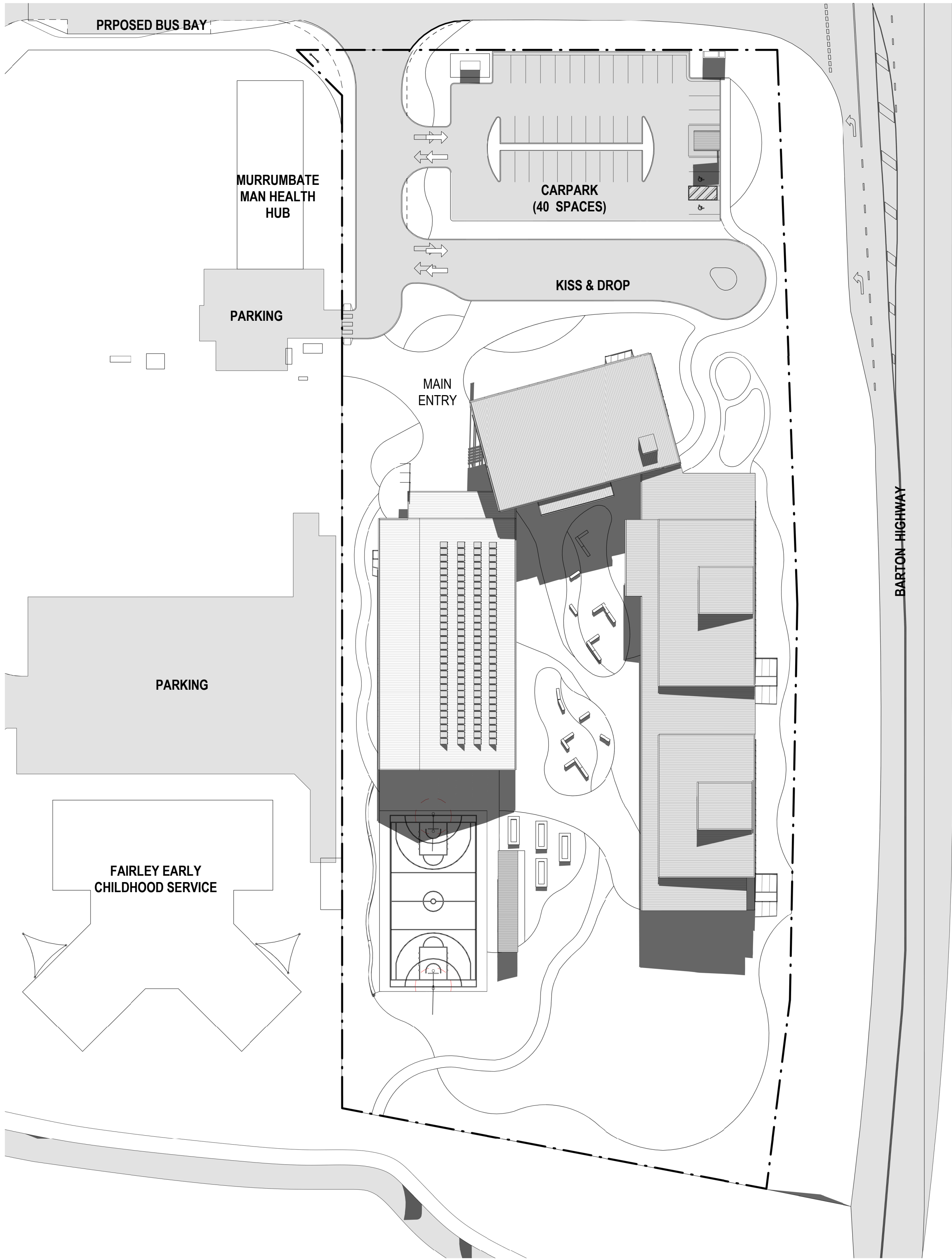
DRAWING NAME
**SHADOW - EXISTING AND
PROPOSED - 21 JUNE 9AM**

PROJECT
**NEW PRIMARY SCHOOL IN
MURRUMBATEMAN**
FAIRLEY STREET MURRUMBATEMAN



SCALE 1 : 500 @ A1			
09 JUNE 2021			
PROJECT	PHASE	SERIES NUMBER	REVISION
MURR - SSDA - 301			D

9/06/2021 1:50:51 PM



AMENDMENTS				DESCRIPTION
REV	BY	DATE		
A	JK	06/05/2021	DRAFT SSDA	
B	JK	17/05/2021	DRAFT T.O.A	
C	PA	27/05/2021	ISSUED FOR SSDA	
D	PA	09/06/2021	ISSUED FOR SSDA LODGEMENT	


NSW
GOVERNMENT

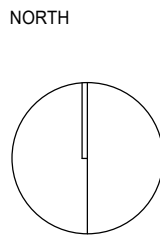
Education

PEDAVOLI ARCHITECTS PTY LTD
LEVEL 2
459-468 WATTLE STREET
ULTIMO NSW 2007 AUSTRALIA
TEL: +61 2 9291 0000
WEB: www.ppa.com.au
NOMINATED ARCHITECT:
VINCE PEDAVOLI
NSW REG. No. 5045



DRAWING NAME
SHADOW - EXISTING AND
PROPOSED - 21 JUNE 12PM

PROJECT
NEW PRIMARY SCHOOL IN
MURRUMBATEMAN
FAIRLEY STREET MURRUMBATEMAN



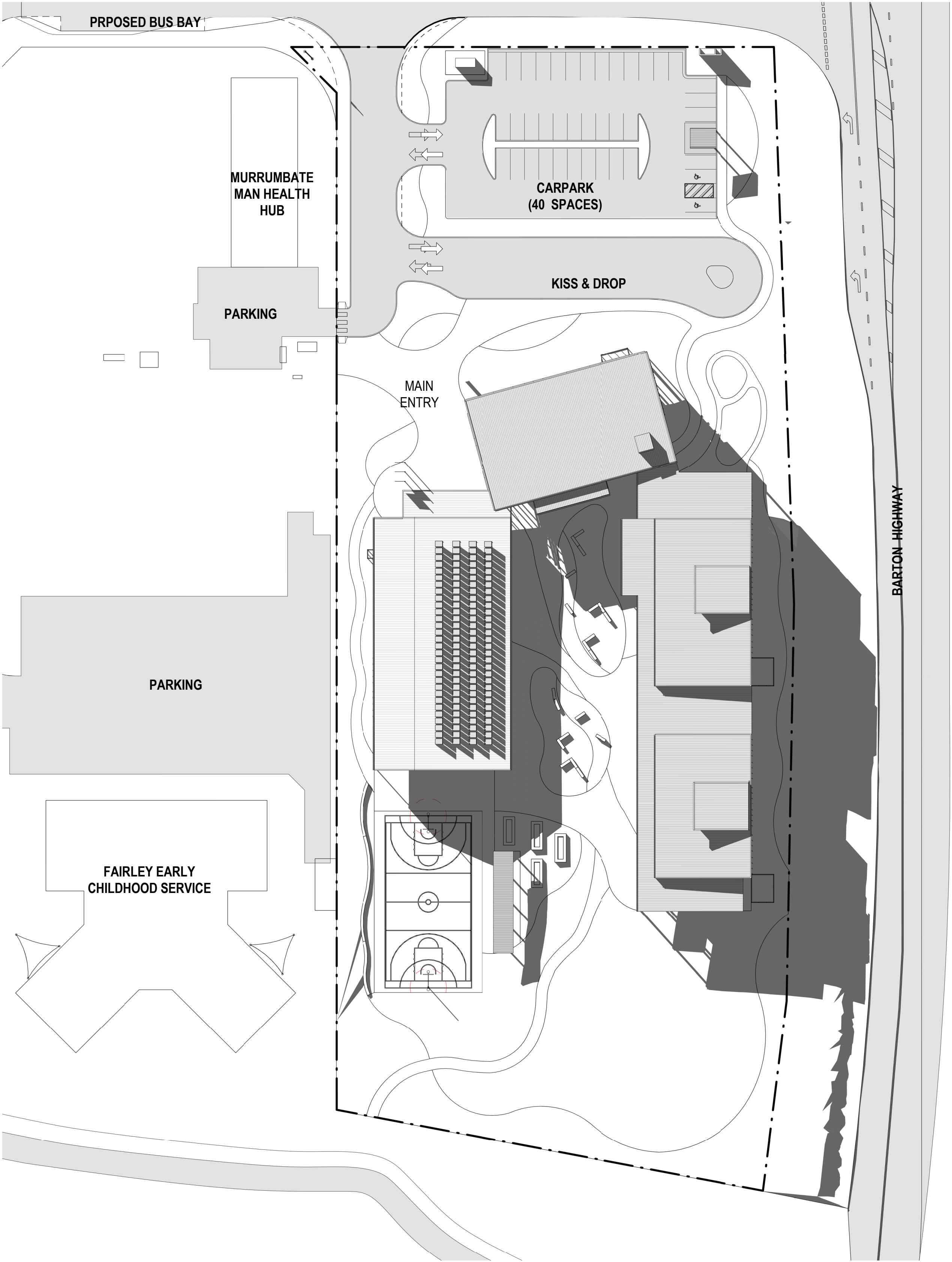
5000 10000 15000 20000 25000 50000

SCALE 1 : 500 @ A1

09 JUNE 2021

PROJECT	PHASE	SERIES NUMBER	REVISION
MURR - SSDA - 302			D

9/06/2021 1:51:29 PM



AMENDMENTS				DESCRIPTION
REV	BY	DATE		
A	JK	06/05/2021	DRAFT SSDA	
B	JK	17/05/2021	DRAFT T.O.A	
C	PA	27/05/2021	ISSUED FOR SSDA	
D	PA	09/06/2021	ISSUED FOR SSDA LODGEMENT	


NSW
GOVERNMENT

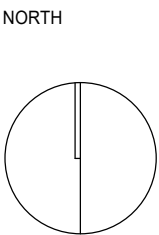
Education

PEDAVOLI ARCHITECTS PTY LTD
LEVEL 2
459-468 WATTLE STREET
ULTIMO NSW 2007 AUSTRALIA
TEL: +61 2 9291 0000
WEB: www.pp-a.com.au
NOMINATED ARCHITECT:
VINCE PEDAVOLI
NSW REG. No. 5045



DRAWING NAME
SHADOW - EXISTING AND
PROPOSED - 21 JUNE 3PM

PROJECT
NEW PRIMARY SCHOOL IN
MURRUMBATEMAN
FAIRLEY STREET MURRUMBATEMAN

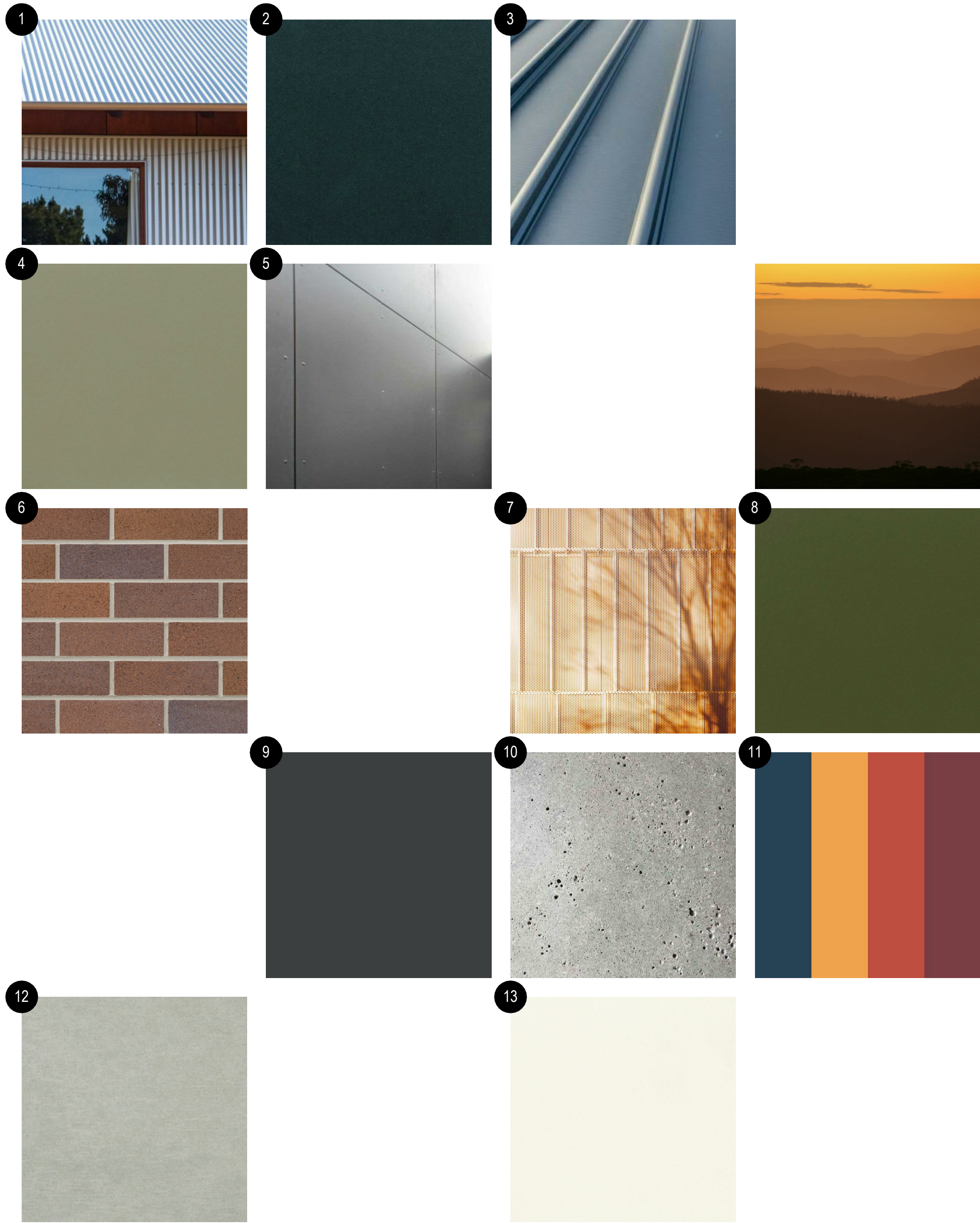


5000 10000 15000 20000 25000 50000

SCALE 1 : 500 @ A1

09 JUNE 2021

PROJECT	PHASE	SERIES NUMBER	REVISION
MURR - SSDA - 303			D



- 01 – Wall and roof metal cladding – Custom Orb
- 02 – Cladding accent colour – Prefinished CFC
- 03 – Roof sheeting – colorbond “Shale Grey”
- 04 – Cladding accent colour – Prefinished CFC
- 05 – Cladding accent colour – Prefinished CFC
- 06 – Brick – Dry pressed --“Bowral Blends - Bargo”
- 07 – Powdercoat metal mesh sunshading
- 08 – Cladding accent colour – Prefinished CFC
- 09 – Cladding accent colour – Prefinished CFC
- 10 – Concrete paving
- 11 – Sunshades
- 12 – Cladding accent colour – Prefinished CFC
- 13 – Cladding accent colour – Prefinished CFC



VIEW OF BUILDING A & D FROM ENTRANCE



VIEW OF BUILDING A,B,C & D FROM WITHIN SCHOOL

9/06/2021 1:51:59 PM

AMENDMENTS				DESCRIPTION
REV	BY	DATE		
A	JK	06/05/2021	DRAFT SSDA	
B	JK	17/05/2021	DRAFT T.O.A	
C	PA	27/05/2021	ISSUED FOR SSDA	
D	PA	09/06/2021	ISSUED FOR SSDA LODGEMENT	

HANSEN YUNCKEN

PEDAVOLI ARCHITECTS PTY LTD

LEVEL 2
459-468 WATTLE STREET
ULTIMO NSW 2007 AUSTRALIA

TEL: +61 2 9291 0000
WEB: www.jp-a.com.au

NOMINATED ARCHITECT:
VINCE PEDAVOLI
NSW REG. No. 5045



RENDERS AND MATERIAL BOARD

NEW PRIMARY SCHOOL IN
MURRUMBATEMAN
FAIRLEY STREET MURRUMBATEMAN

SCALE @ A1			
09 JUNE 2021			
PROJECT	PHASE	SERIES NUMBER	REVISION
MURR - SSDA - 401			D

GFA Definition: (LEP)

gross floor area means the sum of the floor area of each floor of a building measured from the internal face of external walls, or from the internal face of walls separating the building from any other building, measured at a height of 1.4 metres above the floor, and includes—

- (a) the area of a mezzanine, and
- (b) habitable rooms in a basement or an attic, and
- (c) any shop, auditorium, cinema, and the like, in a basement or attic,

but excludes—

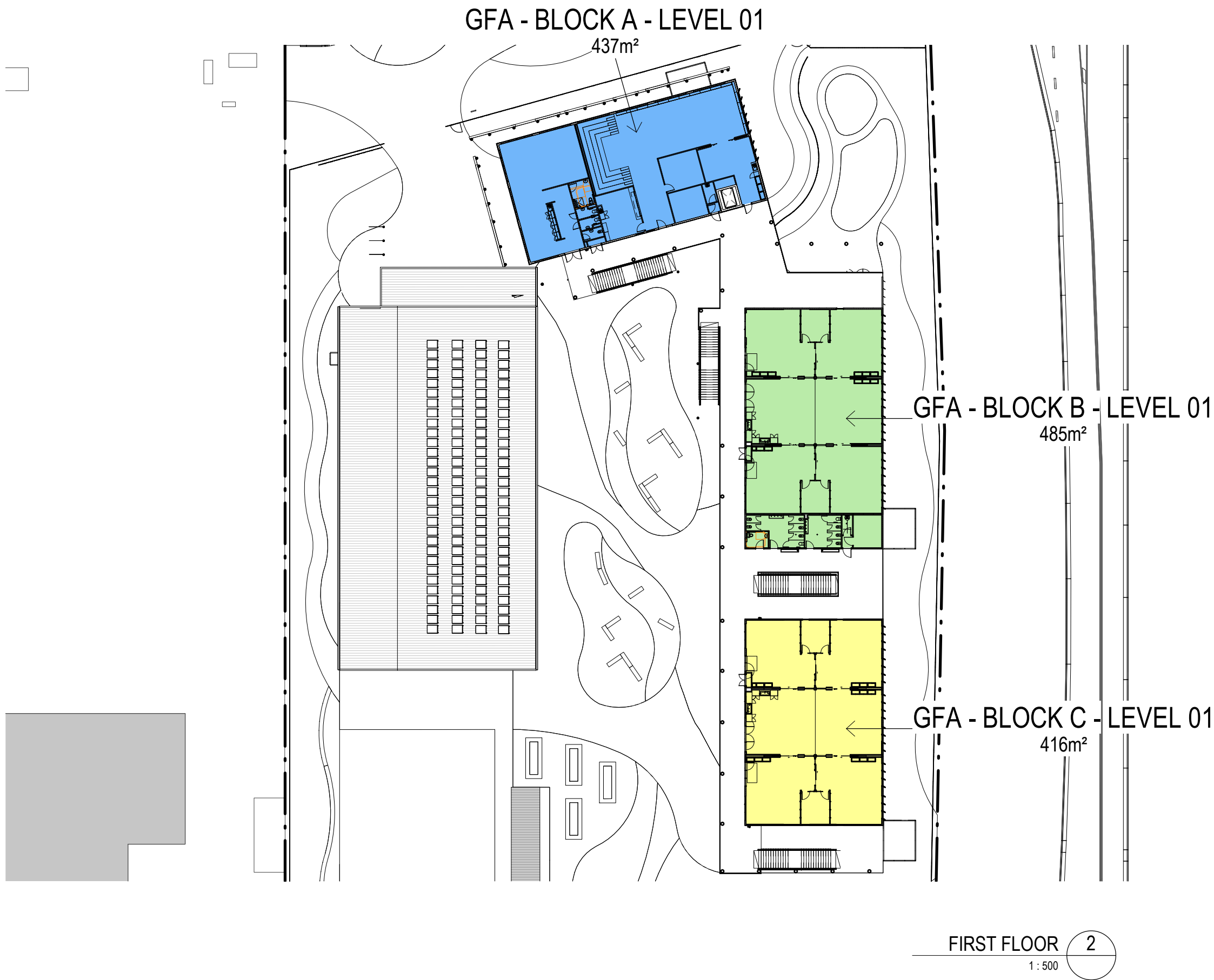
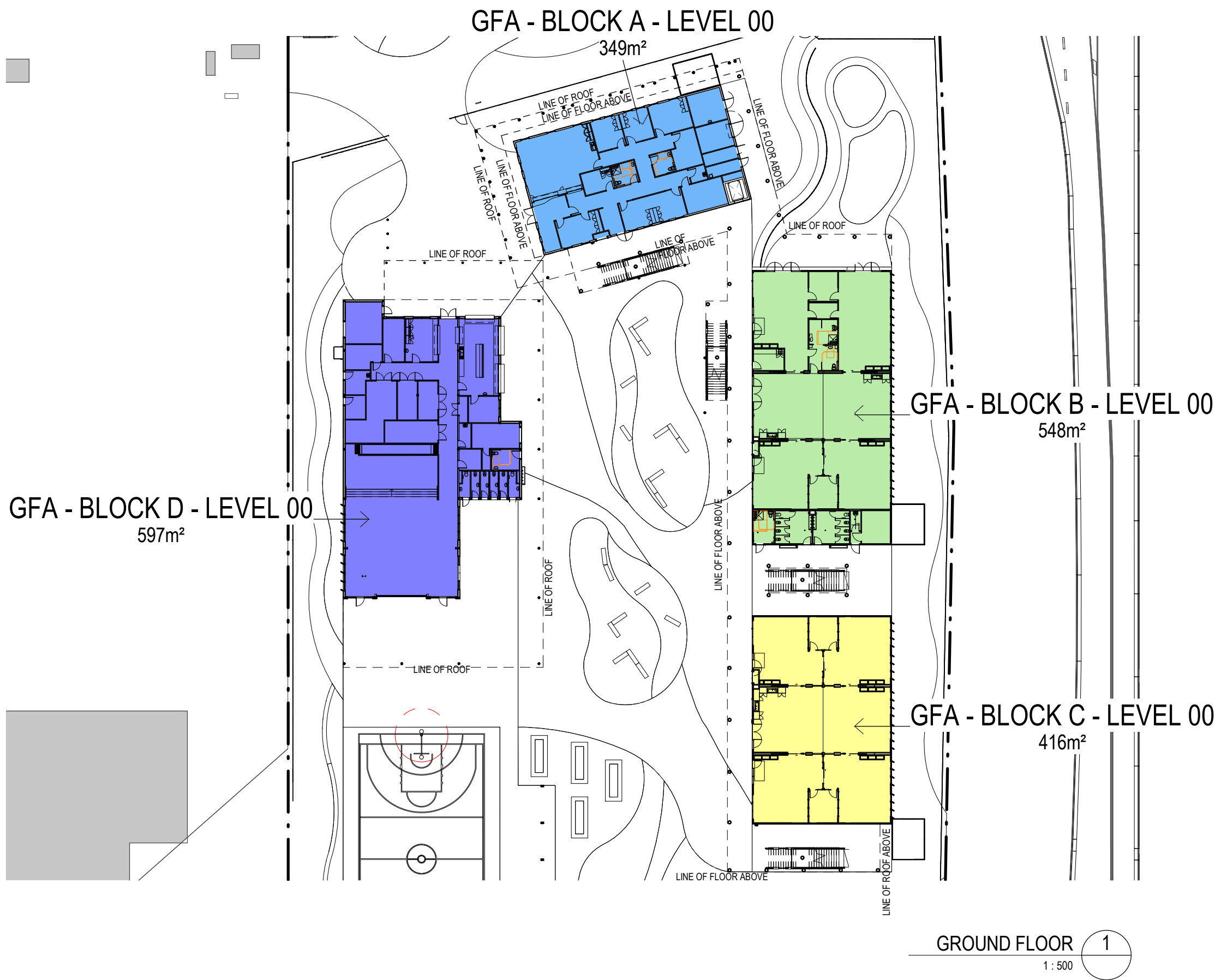
- (d) any area for common vertical circulation, such as lifts and stairs, and
- (e) any basement—
- (i) storage, and
- (ii) vehicular access, loading areas, garbage and services, and
- (f) plant rooms, lift towers and other areas used exclusively for mechanical services or ducting, and
- (g) car parking to meet any requirements of the consent authority (including access to that car parking), and
- (h) any space used for the loading or unloading of goods (including access to it), and
- (i) terraces and balconies with outer walls less than 1.4 metres high, and
- (j) voids above a floor at the level of a storey or storey above.

GFA - BLOCK A		
BUILDING / LOCATION		AREA
GFA - BLOCK A - LEVEL 00		348.89 m²
GFA - BLOCK A - LEVEL 01		437.46 m²
		786.35 m²
GFA - BLOCK B		
BUILDING / LOCATION		AREA
GFA - BLOCK B - LEVEL 00		547.66 m²
GFA - BLOCK B - LEVEL 01		484.76 m²
		1032.42 m²
GFA - BLOCK C		
BUILDING / LOCATION		AREA
GFA - BLOCK C - LEVEL 00		415.76 m²
GFA - BLOCK C - LEVEL 01		415.86 m²
		831.63 m²
GFA - BLOCK D		
BUILDING / LOCATION		AREA
GFA - BLOCK D - LEVEL 00		597.03 m²
		597.03 m²

SITE AREA: 15434.92m²

GFA TOTAL: 3253.83m²

FLOOR SPACE RATIO: 0.21 : 1



9/06/2021 2:16:39 PM

AMENDMENTS				
REV	BY	DATE	DESCRIPTION	
A	JK	06/05/2021	DRAFT SSDA	
B	JK	17/05/2021	DRAFT T.O.A	
C	PA	27/05/2021	ISSUED FOR SSDA	
D	PA	09/06/2021	ISSUED FOR SSDA LODGEMENT	



PEDAVOLI ARCHITECTS PTY LTD
LEVEL 2
459-468 WATTLE STREET
ULTIMO NSW 2007 AUSTRALIA
TEL: +61 2 9291 0000
WEB: www.pp-a.com.au
NOMINATED ARCHITECT:
VINCE PEDAVOLI
NSW REG. No. 5045



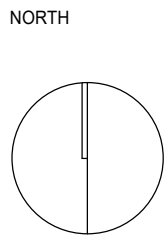
DRAWING NAME

GFA PLANS AND AREA CALCULATION

PROJECT

NEW PRIMARY SCHOOL IN MURRUMBATEMAN

FAIRLEY STREET MURRUMBATEMAN



SCALE As indicated @ A1			
09 JUNE 2021			
PROJECT	PHASE	SERIES NUMBER	REVISION
MURR - SSDA - 501			D