
School Infrastructure NSW

Community Engagement Summary Report

Proposed new primary school in Mulgoa Rise Glenmore Park

Contents

1. Introduction	3
2. Background	4
2.1. School descriptions	4
2.2. Project description	5
2.3. Secretary's Environmental Assessment Requirements	6
2.4. Consultation objectives.....	6
2.5. Description of consultation and communication channels and activities.....	6
2.6. Consultation activities.....	8
2.7. Communication actions	9
3. Stakeholder and Community Feedback	10
3.1. Stakeholder meetings and correspondence	11
4. Project response	11
5. Next Steps.....	12
Appendices	13
Appendix 1: Sample invitation to community information session	14
Appendix 3: Sample display boards from community information session	15
Appendix 3: Screenshot of project webpage	17
Appendix 4: Sample Information Pack	18
Appendix 5: Sample Project Update	23

1. Introduction

School Infrastructure NSW's (SINSW) mission is to provide school infrastructure solutions by working collaboratively with all stakeholders to create learning environments across NSW that serve future needs and make us proud.

As part of our transformation in the way we plan, develop and deliver schools across the state, we are committed to openly sharing information. This will show how one school compares with its neighbouring group of schools. It also explains the challenges we face in the complex world of schools planning. Part of this transparency means that we will let the community know which schools will be worked on and at what time. It will take time since we have over 2,200 schools across the state, so we will address high growth areas within each district and region across the State first.

As we develop a range of options for addressing school infrastructure requirements, members of the community will be able to see and comment on our proposal before it is finalised. Feedback is important and helps us refine our planning process. Whilst we cannot commit to implementing everything suggested, engaging with the broader community ensures we've considered what's important to you, and balanced this with practicality and cost to deliver sustainable and relevant solutions for schools.

This report summarises the consultation and communication activities that have been undertaken in relation to the proposed new school in Mulgoa Rise Glenmore Park. It forms part of the Environmental Impact Statement required for the State Significant Development (SSD) application as specified in the Secretary's Environmental Assessment Requirements (SEARs).

This report summarises the engagement undertaken for this stage of the proposed upgrades by outlining:

- the SEARs for stakeholder and community consultation
- the consultation process undertaken, including key meetings with stakeholders
- a summary of feedback received, and issues raised, by specific stakeholders, and
- how feedback has been considered in the development of the SSD application.

2. Background

The NSW Government is investing \$7.9 billion over four years to deliver 215 new and upgraded schools to support communities across NSW.

The proposed new primary school at Mulgoa Rise Glenmore Park has been planned in response to an urgent need for service driven by rapid growth due to new infrastructure such as the Western Sydney Airport, along with significant housing development and population growth.

The new primary school will support high-quality educational outcomes to meet the needs of students within the local community and deliver:

- innovative learning and teaching spaces
- increased quality active play space currently allocated to primary school and high school students
- specialist teaching facilities
- new sports facilities and recreational areas
- new libraries and administration facilities.

2.1. School descriptions

The Greater Western Suburbs Cluster comprises of four individual projects to be delivered as part of the School Infrastructure's delivery initiative of Design for Manufacture and Assembly (DfMA). The four projects included within this cluster are as follows: Tallawong PS, Mulgoa Rise PS, Centre of Excellence Hawkesbury and Richmond HS.

2.2. Project description

A project is underway to deliver a new primary school for Glenmore Park/Mulgoa Rise to meet enrolment demand in the local area. A new primary school in Glenmore Park/Mulgoa Rise was committed to by the NSW Government to accommodate students in innovative, flexible learning spaces. The proposed project is expected to be completed in early 2023.

The project team is exploring delivery options, including staging delivery, allowing the school to open with capacity of 400 students initially and delivering the facilities for the remaining 400 students at a possible future stage.

The Department of Education owns the school site, located on land bordered by Deerubbin Drive, Darug Avenue and Forestwood Drive. A shopping centre is to be constructed on the vacant block opposite the school site.

The school is likely to be delivered using off-site manufacturing methods (OSM), which are being used for several other new schools across NSW, including at Alex Avenue Schofields, Wagga Wagga, Leppington and Catherine Field. Communications for this construction method will be informed by the delivery of previous OSM school Jordan Springs.

The Glenmore Park community is complex, with most families having both parents working full-time, which means community information sessions will be better attended outside of business hours. The project will provide learning spaces for support classes.

Figure 1: Location of the new primary school



2.3. Secretary's Environmental Assessment Requirements

The Secretary's Environmental Assessment Requirements (SEARs) for the State Significant Development were received in December 2020. An excerpt can be found below.

"The Environmental Impact Statement (EIS) must be prepared in accordance with and meet the minimum requirements of clauses 6 and 7 of Schedule 2 the Environmental Planning and Assessment Regulation 2000 (the Regulation).

Notwithstanding the key issues specified below, the EIS must include an environmental risk assessment to identify the potential environmental impacts associated with the development.

During the preparation of the EIS, you must consult with the relevant local, State or Commonwealth Government authorities, service providers, community groups, relevant special interest groups, including local Aboriginal land councils and registered Aboriginal stakeholders and affected landowners. In particular, you must consult with:

- the relevant Council.
- Government Architect NSW (through the NSW SDRP process).
- Transport for NSW.

Consultation should commence as soon as practicable to inform the scope of investigation and progression of the proposed development.

The EIS must describe and include evidence of the consultation process and the issues raised and identify where the design of the development has been amended in response to these issues. Where amendments have not been made to address an issue, a short explanation should be provided.

Consultation Approach

2.4. Consultation objectives

As set out in the Community Engagement Plan, the following community engagement objectives have been identified for this proposal:

- Promote the benefits of the project
- Build key schools community stakeholder relationships and maintain goodwill with impacted communities
- Manage community expectations and build trust by delivering on our commitments
- Provide timely information to impacted stakeholders, schools and broader communities
- Address and correct misinformation in the public domain
- Reduce the risk of project delays caused by negative third-party intervention
- Leave a positive legacy in each community.

2.5. Description of consultation and communication channels and activities

The table below describes the consultation and communication channels and activities that have been undertaken and the strategic intent of each activity.

Activity	Strategic intent
School community engagement (Project Review Group, Meetings, workshops, school tours, and design user group sessions)	Project Review Group meetings, ad-hoc meetings, workshops and location tours comprise representatives from the local communities including P&C Presidents to discuss aspects of the design, consultation and construction approach and seek feedback and input from members. Design user groups seek input from end users including staff and students about the proposed design and its applicability.
Community information sessions	Provide an opportunity for face to face engagement between the school communities, residents and staff, and members of the project team, and allow for Q&A and concerns to be raised. Information sessions are widely advertised through the communication channels listed in this table. A sample invitation can be found at Appendix 1. Sample display board material can be found at Appendix 2
Communications	Distribution of project information to stakeholders delivered via letterbox drop and school newsletter. A screen print of the project webpage can be found at Appendix 3. A sample information pack can be found at Appendix 4. A sample

(Project webpage, Information Pack, Project Updates and Works Notifications)	Project Update can be found at Appendix 5.
Contact channels (Emails and 1300 project information number)	Direct responses to stakeholder and community contact.
School community communication (Newsletters, updates on app, P&C meetings)	Ongoing updates as required and direct responses to questions.

2.6. Consultation activities

A key factor of the project is the governance provided through the Project Reference Group (PRG), which provides feedback on critical design elements and the overall project direction. PRG meetings commenced and has met monthly. PRG membership comprises school leadership members, community representatives, and project team members.

Date/s	Targeted stakeholders	Consultation activity	Attendance
2020			
18/12/2020	Educational Facilities, Standards and Guidelines (EFSG)	Meeting	EFSG & Colliers
2021			
Reoccurring Monthly	Project Control Group (PCG) Meeting	Meeting	SINSW stakeholders, NSW education representatives & key Project team members
Reoccurring Monthly	Executive Steering Committee (ESC) Meeting	Meeting	SINSW executives, NSW education representatives & Colliers
19/01/2021	EFSG Consult	Meeting	EFSG/Colliers
21/01/2021	Initial Briefing	Meeting	SLEC/Disability Support Team/EFSG/NBRS
28/01/2021	Security team - Master Plan Review	Meeting	SSU/Project Team
01/02/2021	Director of Educational Leadership (DEL) Briefing	Meeting	DEL/Project Team
02/02/2021	Traffic Stakeholder Meeting	Meeting	SINSW Transport/Project team
19/02/2021	DEL Catch-up	Meeting	DEL/Colliers
09/03/2021	EFSG/Disability/School Learning Environments & Change (SLEC) - Project Update	Meeting	EFSG/SLEC/Disability Standards
11/03/2021	Support Unit DEL Update	Meeting	DEL/Colliers
18/03/2021	Community Engagement Approach	Meeting	SINSW Community Engagement
18/03/2021	ICT/WHS/Security - Workshop	Meeting	ICT, WHS, SSU & The project team
18/03/2021	EFSG/Disability/SLEC - Workshop	Meeting	EFSG, Disability Standards, SLEC & The project team
25/03/2021	Pre-DA Meeting - Penrith Council	Meeting	Penrith City Council & the project team
07/04/2021	Traffic Update	Meeting	SINSW Transport & the Project Team
22/04/2021	Transport Working Group #1	Meeting	Penrith City Council, Transport for NSW, The project team
04/05/2021	Expenditure Review Committee (ERC) Meeting	Meeting	ERC, EFSG & the project team
21/6/2021	Support Unit Design Update	Meeting	EFSG, SLEC, Disability standards, NBRS & Colliers
26/7/2021	Transport Working Group #2	Meeting	Penrith City Council, Transport for NSW, The project team

2.7. Communication actions

The table below outlines the communication actions undertaken to keep stakeholders and communities informed about this proposal.

Date	Targeted stakeholders	Communication channel and action
2021		
April 2021	Nearby residents, future school community, interested stakeholders	Invitation to community information session and web page update
May 2021	Community information session attendees	Information pack
August 2021	Nearby residents, future school community, interested stakeholders	Invitation to community information session and web page update
August 2021	Nearby residents, future school community, interested stakeholders	Virtual Information Room
August 2021	Community information session attendees	Information pack
2020		
2020	All interested parties	Project webpage schoolinfrastructure.nsw.gov.au/projects/n/new-primary-school-in-mulgoa-rise-glenmore-park
November 2020	Nearby residents, future school community	Project Update

3. Stakeholder and Community Feedback

Stakeholder and community feedback has been integral to the development of this proposal. Feedback was sought from stakeholders and communities through the consultation activities and communication channels listed in Section 3.

The project team has held 1 community information sessions, which resulted in approximately 12 attendees, 0 feedback forms, and numerous face-to-face comments to project team members. The project team has also responded to 16 direct emails and phone calls about the project.

Consultation identified key issues of community interest for consideration during the preparation of the Environmental Impact Statement. This feedback resulted in design changes to better facilitate a primary school pedagogy, reduced obstruction of sight lines, and allows for the centralisation of play space.

Key themes have emerged from the feedback and are described below.

1. Desire for the school in the local community
2. Completion dates
3. Enrolment and catchment
- 4.

3.1. Stakeholder meetings and correspondence

This section outlines a summary of the key consultation undertaken with stakeholders, as defined and required by the SEARs.

Stakeholder	Date/s	Feedback topics	Outcomes
Penrith City Council	25/03/2021	<ul style="list-style-type: none">• Initial Steps• Engineering matters• Traffic Management and Parking• Environmental Management• Planning and landscape• Waste Management	<ul style="list-style-type: none">• Detailed traffic report required.• Increased number of ramps required for library.• Ptc to assess kiss and ride strategy• More car parks needed.• Community consultation required for adjacent residence.• Conditions of consent required for development across the road.
State Design Review Panel	17/03/2021	<ul style="list-style-type: none">• Masterplan and Landscape• Aboriginal Cultural Heritage• Architectural Expression• Sustainability and Environmental Aspects	<ul style="list-style-type: none">• Masterplan is reasonable and supported.• Indigenous landscaping to be incorporated as a whole, not just discrete elements.• Consider DfMA opportunities, for built character. More details required around materiality.
Transport for NSW (TfNSW) and Roads and Maritime Authority (RMS)	22/04/2021	<ul style="list-style-type: none">• Transport Approach• Bus Routes• Walkability• Raise platform.	<ul style="list-style-type: none">• Increase of bus trips and re-routing of existing bus route is likely.• Location change for support unit drop off required.• Walkability for local students assessed, to be included in SSDA documentation.• Raised crossing incorporation included in SSDA.
Special interest groups: local Aboriginal land council and registered Aboriginal stakeholders			

4. Project response

The feedback received during consultation has been considered in the preparation of the Environmental Impact Statement. The table below provides a detailed summary of the key issues that emerged and the corresponding project response.

Key issues	Project response	Relevant report
Revised Master Plan	Following direction from the DEL, the project team has revised the master plan and support unit location.	Architectural report
Road Safety Strategy / Support Unit parking Revision	With the master plan redesign, the road safety strategy was also revised. The project team has worked closely with TfNSW and Penrith City Council to identify and resolve any issues in road safety. Further to TfNSW's comments, the location of the support unit pick up and drop off has been updated	
Car Park Capacity	Following council's suggestion to increase the number of car parks on the site, the project team has explored the potential to use a local car park as a mixed school / community car park.	
Wholistic Indigenous Representation	With the SDRP's suggestion to incorporate indigenous landscaping as not just discrete elements, the project team has further researched the potential for aboriginal representation.	
	The head contractor, Richard Crookes Constructions has explored the most optimal DfMA strategy for the project.	

Key issues	Project response	Relevant report
DfMA Implementation	Following engagement, the project team has incorporated the SDRP's commentary and explored further detailing around built character and materiality.	
Raised Crossings	Further to the road safety strategy, raised crossings have been explored by the project team, however, flood modelling has identified impactions to surrounding residences.	
Local Walkability	Site access has been reviewed to capture local students walking to school.	School Transport Plan

5. Next Steps

In preparing the SSD application for the new primary school at Mulgoa Rise Glenmore Park, the project team has exceeded the consultation requirements prescribed by the SEARs.

School Infrastructure NSW has demonstrated in this report how it has engaged with stakeholders and how feedback has led to significant design revision and incorporated into the designs and studies lodged with the SSDA.

Continued engagement will take place with stakeholders and communities during the statutory exhibition of the SSD application, as well as during future stages of the planning and development process. Specifically, School Infrastructure NSW will continue to work closely with the schools' communities and Penrith Council to plan and coordinate potential future construction, should consent be granted.

School Infrastructure NSW will continue to update the project webpage and produce updates at key project stages for stakeholders and communities.

Appendices

Appendix 1: Sample invitation to community information session

NSW Department of Education – School Infrastructure



An example of facilities we are building for students across NSW

New public school in Mulgoa Rise Glenmore Park

Project update

April 2021

Investing in our schools

The NSW Government is investing \$7 billion over the next four years, continuing its program to deliver more than 200 new and upgraded schools to support communities across NSW. This is the largest investment in public education infrastructure in the history of NSW.

The NSW Department of Education is committed to delivering new and upgraded schools for communities across NSW. The delivery of these important projects is essential to the future learning needs of our students and supports growth in the local economy.

Project overview

- 20 New classrooms
- Administration building
- Library
- Multi-use Hall
- Canteen
- Sports Court
- Playing Fields

The project is being designed for approximately 400 enrolments, with the option to add additional classrooms at a future date to meet enrolment demand.

You're invited

We have now finalised the concept design for the new school. We invite you to find out more about the master plan and talk to representatives of the project team at an information session.

Location:

Glenmore Park High School library
Glenmore Parkway, Glenmore

Dates and time:

The hub will be open on Thursday 6th May from 4:00pm to 7:00pm.



We want to hear from you

Let us know what you think and ask questions by using the contact details below, scan the QR code or use the following link: edu.nsw.gov.au/7wn6tw

At the NSW Department of Education, we recognise the traditional custodians of the lands and waterways where we work and live. We celebrate the First Peoples' unique cultural and spiritual relationship to Country and acknowledge the significance of Aboriginal cultures in Australia.

For more information contact:

School Infrastructure NSW
Email: schoolinfrastructure@det.nsw.edu.au
Phone: 1300 482 651
www.schoolinfrastructure.nsw.gov.au



Investing in our schools

A new public school in Mulgoa Rise, Glenmore Park

A project is underway to build a new public school. This project is scheduled to be ready for Term 1 2023.

Benefits

- new learning hubs to include 20 new flexible learning spaces (classrooms)
- multi purpose hall
- administration building
- library
- canteen
- sports court and playing fields



If you want to find out more or provide feedback please visit edu.nsw.link/7wn6tw or scan the QR code.



An example of new schools being delivered across NSW

schoolinfrastructure.nsw.gov.au

A new public school in Mulgoa Rise

For more information phone: 1300 482 651
Email: schoolinfrastructure@det.nsw.edu.au



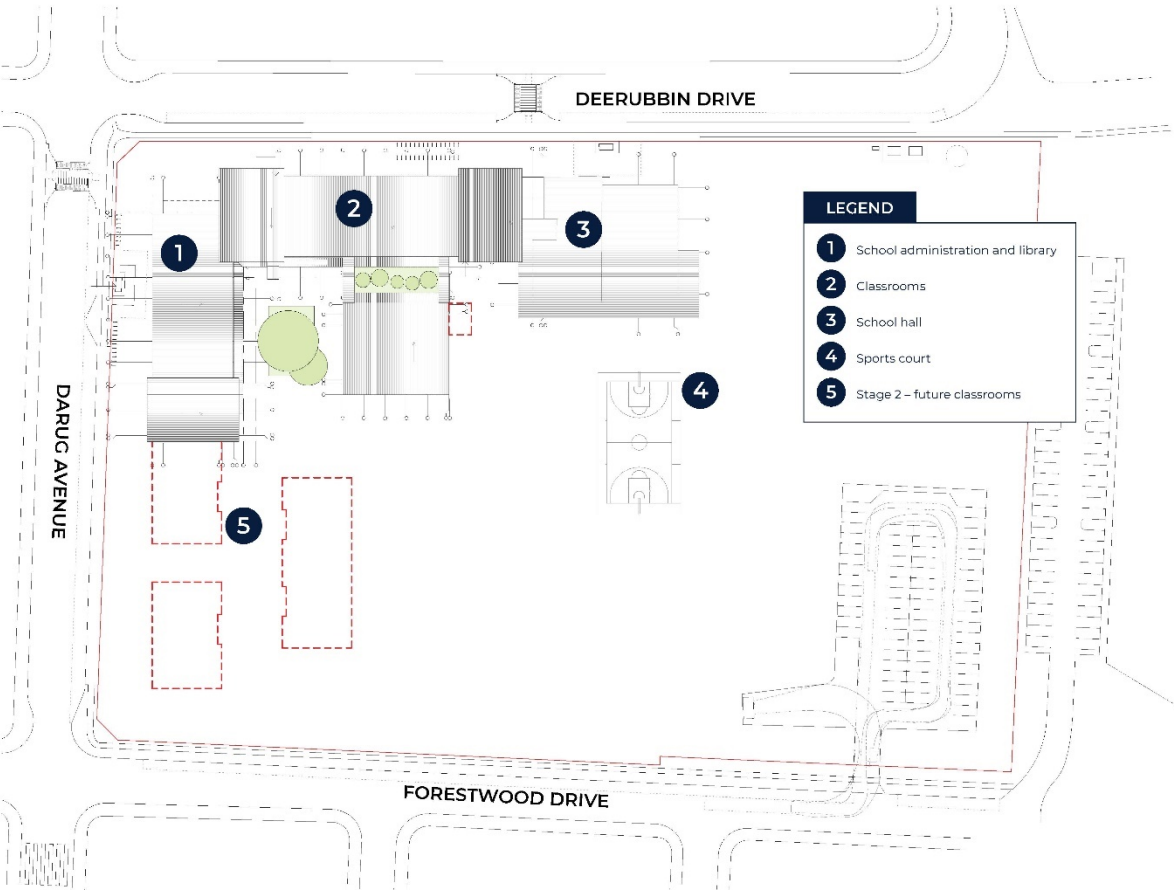
Proposed site plan

School Infrastructure NSW (SINSW) is in the final stages of planning for a new public school in Mulgoa Rise, Glenmore Park.

The school is proposed to accommodate approximately 400 students, with future buildings marked out to accommodate potential enrollment growth in the area.

The school is due to be complete Term 1 2023.

If you want to find out more or provide feedback please visit edu.nsw.link/7wn6tw or scan the QR code.



schoolinfrastructure.nsw.gov.au

A new public school in Mulgoa Rise

For more information phone: 1300 482 651
Email: schoolinfrastructure@det.nsw.edu.au



Project timeline



What's next?

We will continue to work with key stakeholders so that we can deliver high quality education infrastructure for the local community. The next phase of planning involves the submission of the SSDA for planning approval and public exhibition.

We look forward to sharing more information with you as the project progresses. In the meantime you can stay informed by regularly visiting the project web page and you can contact us via email or phone if you have any questions or feedback about the new high school.

schoolinfrastructure.nsw.gov.au

A new public school in Mulgoa Rise

For more information phone: 1300 482 651
Email: schoolinfrastructure@det.nsw.edu.au



Innovative learning spaces

Contemporary learning and teaching prepares students for a diverse and interconnected world. We are evolving the ways we teach our students new skills valued by a changing workforce, understand different ways students learn and support new ways of interacting with information through technology.

Innovative learning environments are flexible spaces designed and equipped to support contemporary learning and teaching.

What makes an innovative learning space?



Learning space

- Different zones (areas of a building or floors) are designed to support a range of activities sometimes grouped by subject area
- Varied furniture allows for student choice, comfort and flexibility
- Spaces are flexibly connected allowing students to work in varied group sizes
- Connection between indoor and outdoor learning spaces



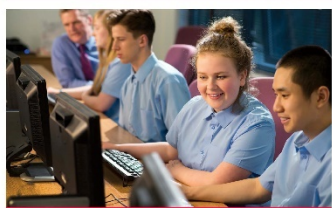
Organisation

- Movement is encouraged for students and teachers to collaborate and interact
- More than one teacher may be available to students within the learning environment
- Students learn in classes, small groups or individually



Teaching and learning

- Learning is personalised
- Learning is connected across different subject areas
- There is a focus on creativity and innovation with students prototyping, testing and using technology in creative ways



Technology

- Technology is integrated into spaces to extend learning opportunities
- WiFi is available everywhere including outdoors
- Specialist equipment is available for students to innovate, communicate and create

schoolinfrastructure.nsw.gov.au

A new public school in Mulgoa Rise

For more information phone: 1300 482 651
Email: schoolinfrastructure@det.nsw.edu.au



Appendix 3: Screenshot of project webpage



Get involved

We are committed to working together with our school communities to deliver the best possible learning facilities for students. Opportunities for school communities to get involved in the project will be shared on this page.

Information session

You're invited to find out more about the project and talk to representatives of the project team at an information session.

An information session will be held at Glenmore Park High School library on Wednesday 6th May from 4pm to 7pm.

Get in contact

Email:

Appendix 4: Sample Information Pack

New public school in Mulgoa Rise Glenmore Park

Information pack | April 2021



An example image of an adaptive learning space being delivered across NSW

The NSW Government is investing \$7 billion over the next four years, continuing its program to deliver more than 200 new and upgraded schools to support communities across NSW. This is the largest investment in public education infrastructure in the history of NSW.

The NSW Department of Education is committed to delivering new and upgraded schools for communities across NSW. The delivery of these important projects is essential to the future learning needs of our students and supports growth in the local economy.

Project overview

A new public school is being developed to cater for the growing population in the Mulgoa Rise and Glenmore Park communities. The upgrade will include:



20 new flexible
learning spaces



Multipurpose
hall



Staff and
administration
areas



Library



Canteen



Sports court and
playing fields

schoolinfrastructure.nsw.gov.au



Progress summary

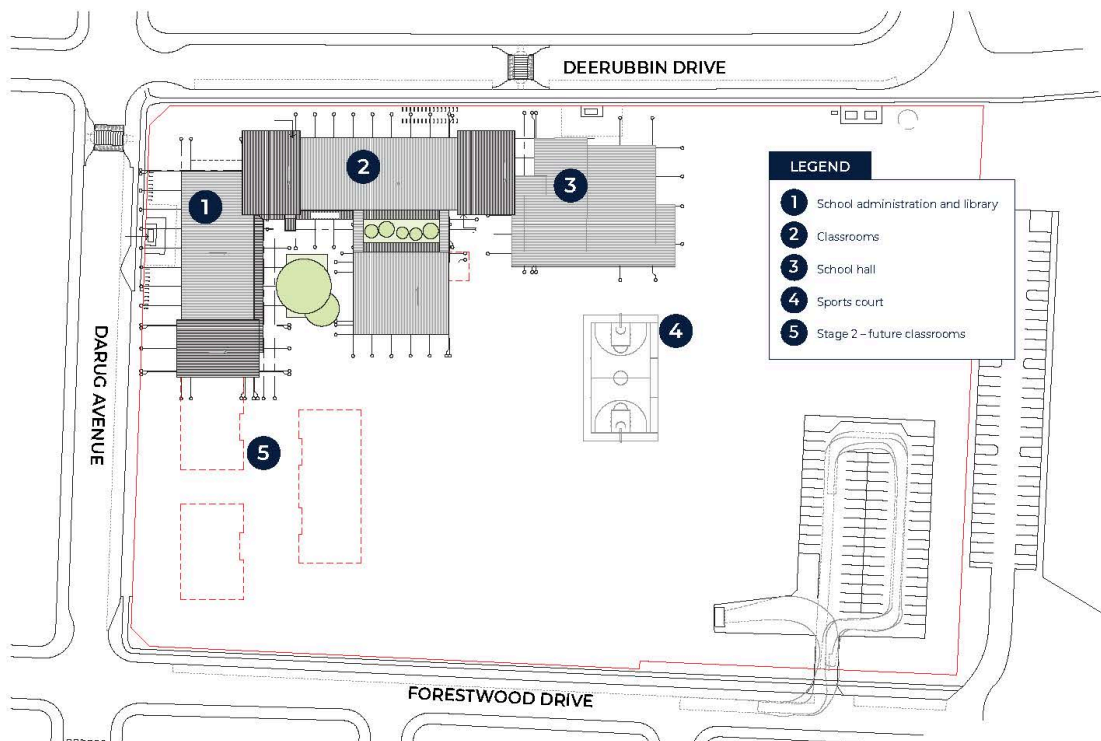
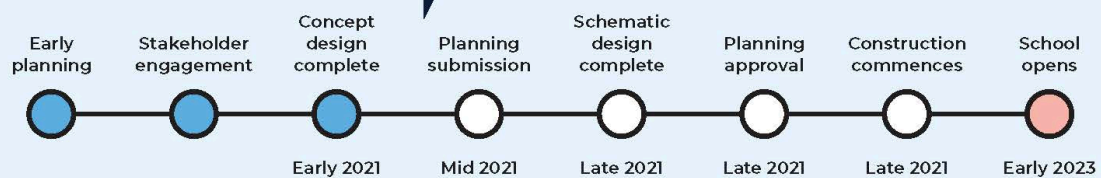
The project team has worked with the early involvement contractor and architect to develop and finalise the concept plan. The design has been developed in consultation with a Project Reference Group.

The State Significant Development (SSD) application for the project will soon be lodged with the Department of Planning, Industry and Environment (DPIE). The SSD application will be placed on public exhibition by DPIE. Public exhibition dates will be shared once they are available.

Next steps

- DPIE will publicly exhibit the SSD application.
- Development of the schematic design.
- Determination of the SSD application.
- Early works to prepare the site are expected to occur in late 2021, with main construction works expected to start in early 2022 pending SSD determination.
- Information on staging will be shared as the designs are further developed.
- The project is forecast to be ready Term One 2023, subject to planning approval and weather permitting.

Indicative timeline



Indicative site plan – new primary school at Mulgoa Rise (subject to change)

Design principles

Our Build Approach

For this project, we will be combining the manufacture of building components, such as wall systems and facades, in a safe, clean and efficient factory environment, off-site with onsite assembly. The parts will be transported to the school site on trucks and then assembled into place.

This approach has the potential to deliver significant safety and sustainability outcomes and drive productivity and quality efficiencies that can benefit Government, industry and communities.

We expect construction of the proposed new school will start in late 2021, subject to planning approval. We will keep you updated on these timeframes as the project progresses.

How can I find out more about the SSD application for the new school at Mulgoa Rise Glenmore Park?

Following submission of the SSD application, you can find detailed information about the new school at Mulgoa Rise Glenmore Park by going to the Department of Planning, Industry and Environment's website at www.planningportal.nsw.gov.au/major-projects.

How can I provide feedback on the SSD application for the new school at Mulgoa Rise Glenmore Park?

Once on public exhibition, all feedback on the SSD application should be given to the Department of Planning, Industry and Environment. To find out how to submit your feedback, please go to:

www.planningportal.nsw.gov.au/major-projects



An artist render of the new school at Mulgoa Rise Glenmore Park



An artist render of the new school at Mulgoa Rise Glenmore Park

Frequently asked questions

What are the SEARs?

The Secretary's Environmental Assessment Requirements (SEARs) are the set of terms by which the Department of Planning, Industry and Environment (DPIE) will assess SINSW's application for planning approval.

The SEARs are prepared by DPIE to ensure the impacts of the project are properly described and understood.

DPIE consults with other relevant government departments and agencies to prepare the SEARs.

To satisfy the SEARs, SINSW must prepare a document called an Environmental Impact Statement (EIS).

What planning pathway is this project subject to?

It has been determined that construction of the new primary school in Mulgoa Rise is a State Significant Development (SSD) and therefore the NSW Department of Planning, Industry and Environment (DPIE) will assess the development application for the project.

Preparing an SSD application (SSDA) takes some time and we expect that the application will be lodged in the coming months. The SSDA will be put on public exhibition and there will be an opportunity for the community to make submissions directly to DPIE during that time. Once the SSDA is lodged DPIE will notify and advertise the public exhibition period and upload the application to the DPIE major projects website. We will also notify residents and the school community through project and website updates.

While the SSDA is being prepared we are continuing to progress other aspects of the project and will keep the community informed as the project evolves.

How can I get involved?

We are committed to working together with our school communities and other stakeholders to deliver the best possible learning facilities for students. Your feedback on this project is important to us. For more information, questions or to make a comment please email us at schoolinfrastructure@det.nsw.edu.au.

What kind of school will it be?

The new public school will be for students in grades Kindergarten to Year 6 inclusive. It will offer modern facilities to foster innovative teaching methods. The scope and potential staging of the new school is still to be defined.

How many students will go to the school?

The new primary school is proposed to accommodate up to 400 students at opening, with optional additional buildings marked out to accommodate future possible growth in the area.

What is the proposed enrolment and catchment area?

The Department will confirm the school catchment area closer to the school opening using the most current demographic data.

When can I enrol my student into the new school?

The school will be open for enrolments as the project nears completion. We will keep local residents informed as the project progresses and the department will inform the community when the school begins taking enrolments.

Information session

We will be hosting an information session where you can learn about the project and what it will deliver, the planning approval pathways, meet members of the project team and ask questions.

Date: Thursday 6th May from 4:00pm to 7:00pm

Location: Glenmore Park High School library
Glenmore Parkway, Glenmore

This session is open for all members of the local community.

Contact us



Website

Stay up to date by visiting the School Infrastructure NSW website
schoolinfrastructure.nsw.gov.au



Email

Contact the Community Engagement team by emailing
schoolinfrastructure@det.nsw.edu.au



Phone

Contact us between 9:00am and 5:00pm, Monday to Friday on **1300 482 651**

schoolinfrastructure.nsw.gov.au



Appendix 5: **Sample Project Update**



An example of facilities we are building for students across NSW

A new public school at Mulgoa Rise

Project update

March 2021

Investing in our schools

The NSW Government is investing \$7 billion over four years, continuing its program to deliver more than 200 new and upgraded schools to support communities across NSW. This is the largest investment in public education infrastructure in the history of NSW.

The NSW Department of Education is committed to delivering new and upgraded schools for communities across NSW. The delivery of these important projects is essential to the future learning needs of our students and supports growth in the local economy.

Project overview

- 20 New classrooms
- Administration building
- Library
- Multi-use Hall
- Canteen
- Sports Court
- Playing Fields

The project is being designed for approximately 400 enrolments, with the option to add additional classrooms at a future date, to meet enrolment demand.

Progress summary

The project has been approved to proceed through the statutory planning process. Detailed design is continuing as School Infrastructure NSW (SINSW) finalises the Environmental Impact Statement (EIS).

Next steps

As part of the final planning process, SINSW will look to submit the EIS in coming weeks.

In the meantime, early works to prepare the site for construction will look to progress. Equipment used for early works will include but not be limited to concrete trucks, cranes, loaders and excavators.

We want to hear from you



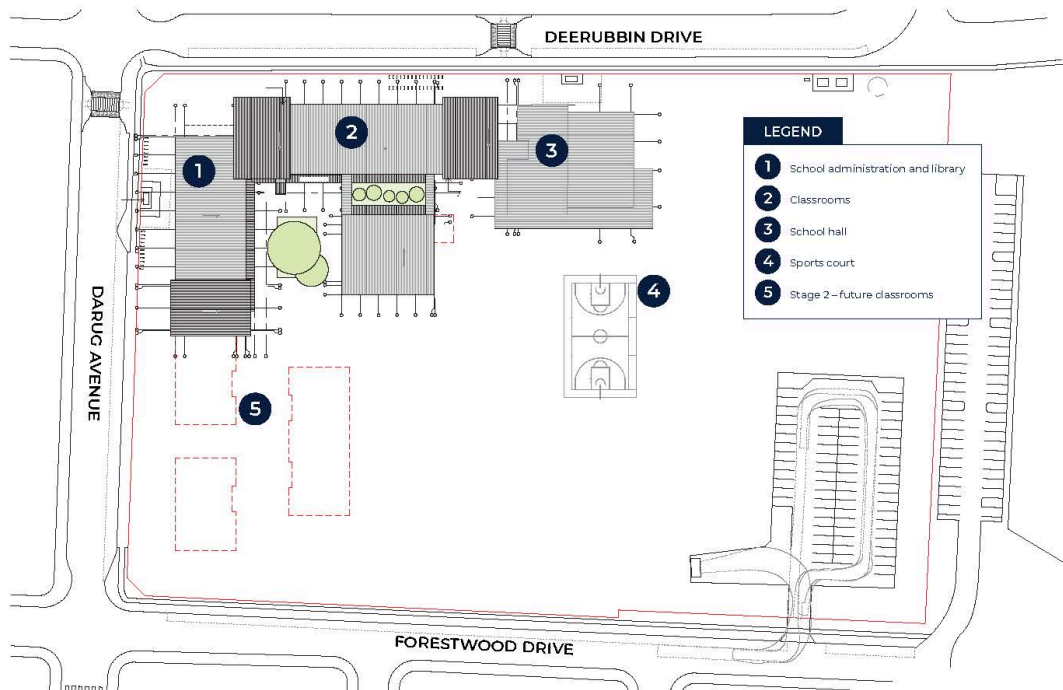
Let us know what you think and ask questions by using the contact details below, the QR code or the following link: edu.nsw.link/7wn6tw

At the NSW Department of Education, we recognise the traditional custodians of the lands and waterways where we work and live. We celebrate the First Peoples' unique cultural and spiritual relationship to Country and acknowledge the significance of Aboriginal cultures in Australia.

For more information contact:

School Infrastructure NSW
Email: schoolinfrastructure@det.nsw.edu.au
Phone: 1300 482 651
www.schoolinfrastructure.nsw.gov.au





Indicative site plan – new primary school at Mulgoa Rise

Frequently asked questions

When will construction on the project start?

Main works are scheduled to start on site in early 2022, subject to planning approval. Early works to prepare the site are likely to be delivered across late 2021.

When will the project be complete?

The project is forecast to be ready for Term One, 2023, subject to planning approval and weather permitting.

What is an Environmental Impact Statement?

An Environmental Impact Statement (EIS) is a publicly available document that provides information on a project, including its environmental impacts and mitigation measures, and is used to inform development consent decisions. It is submitted to the NSW Department of Planning, Industry and Environment as part of the State Significant Development (SSD) application.

How is the school being constructed?

The project uses modern methods of construction combining off-site and on-site assembly to deliver infrastructure. This process allows better use of limited land supply and minimises impact to the local community, as new permanent buildings and upgrades are delivered in shorter timeframes.

What is the capacity of the new school?

The current project is to deliver a school that will accommodate approximately 400 students (for Term One, 2023).

The school design will allow for further expansion to accommodate enrolment growth if required in the future (see red outline for potential 'stage two' above).

What is the catchment area?

The catchment area will be determined closer to the opening of the school. School catchments, once decided, will be available on the School Finder website my.education.nsw.gov.au/school-finder. Details on how to enrol will be shared closer to the completion of the project.

For more information contact:

School Infrastructure NSW
Email: schoolinfrastructure@det.nsw.edu.au
Phone: 1300 482 651
www.schoolinfrastructure.nsw.gov.au

