

NEW PRIMARY SCHOOL IN MULGOA RISE

LANDSCAPE DESIGN DRAWINGS

SSDA/ August 2021

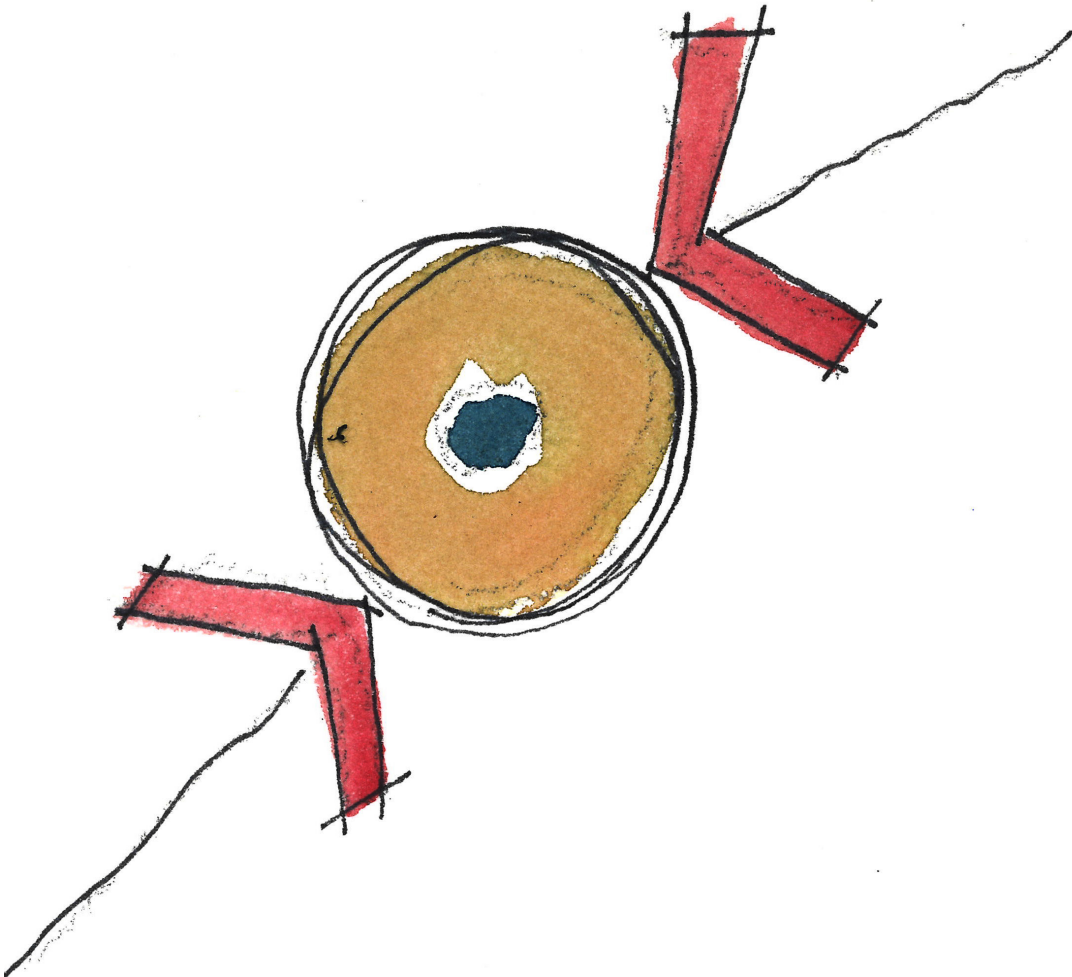
Document Control

Revision	Date	Description	By	Approved
1	05.05.21	SSDA FOR REVIEW	MF	AL
2	06.08.21	SSDA FOR REVIEW	MF	AL
3	11.08.21	SSDA FOR REVIEW	MF	AL
4	18.08.21	SSDA FOR REVIEW	MF	AL

VISION

“

The landscape design of the new primary school in Mulgoa Rise aims to create a meeting place for students and local communities which celebrates the original characters & culture of the land, encourages active and passive recreations and knowledge sharing beyond the classrooms.



DESIGN APPROACH



IDENTITY

- Promote the identity of the place through design interpretations of the site history.
- Respect and celebrate the characters and culture of the land.
- Select materials that are robust and unique to the environmental setting.
- As a landmark within this new community.



INCLUSIVITY & ACCESSIBILITY

- Ensure the design presents an accessible, inclusive, and welcoming environment, both physically and culturally.
- Create a safe and pleasant environment which encourages outdoor learning and activities.
- Ensure equal access is provided and structured to allow for clear circulation and connections.
- Allow for passive/dynamic play and learning spaces for different age groups.
- Provide access and connections to the natural environment that encourages learning and interactions.



SUSTAINABILITY & RESILIENCE

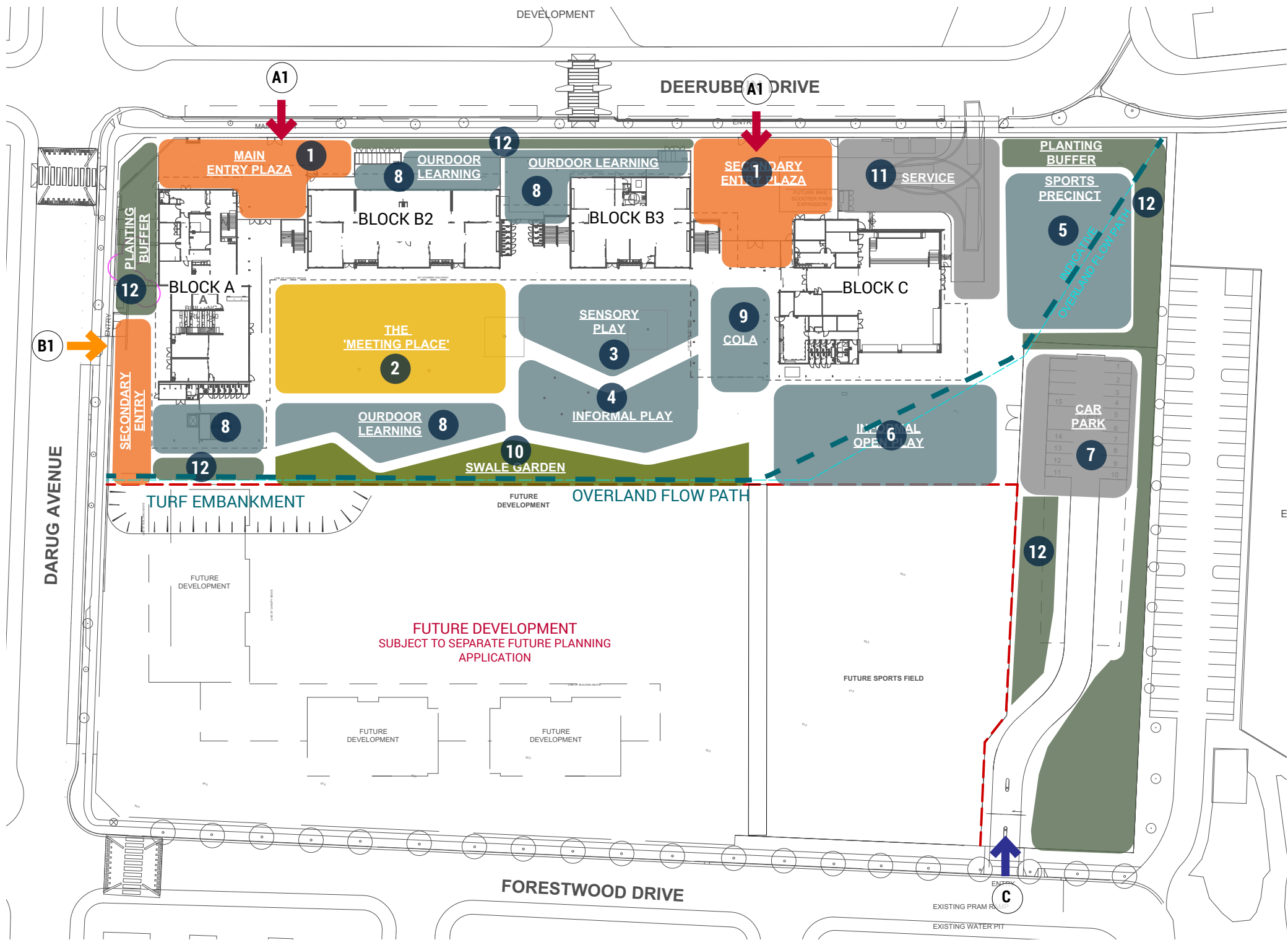
- Planting selections are responsive to local environment, with opportunities to provide shade and reinstate the local habitat.
- 1in100 year flood risk is considered to achieve a resilient landscape.
- Accommodate the varying climate conditions.



PROGRAMMABLE SPACE

- Provide flexible and engaging outdoor spaces.
- Encourage outdoor learning and activities in groups or individually and interactions.
- Active and passive play areas are provided to cater for different users.
- A variety of spaces that can accommodate flexible functions and programmes.

FRAMEWORK DIAGRAM



LEGEND

- 1. MAIN ENTRY PLAZA
- 2. THE 'MEETING PLACE' ASSEMBLY
- 3. SENSORY GARDEN
- 4. * PLAYGROUND
- 5. SPORTS PRECINCT
- 6. INFORMAL OPEN PLAY
- 7. CAR PARK
- 8. OUTDOOR LEARNING/PLAY
- 9. COLA
- 10. SWALE GARDEN
- 11. SERVICE AREA
- 12. BUFFER PLANTING
- A1: MAIN ENTRY & FORECOURT VIA DEERUBBIN DRIVE
- B1: SECONDARY ENTRY VIA FORESTWOOD DRIVE
- C: VEHICULAR ENTRY
- *NOTE: FUTURE EQUIPMENT TO BE PROVIDED BY SCHOOL

Disclaimer
These plans are for Client use and/or Council Approval only. Not intended for construction purpose unless specifically noted. The contractor intending to use these documents shall check and verify all works on site and report any discrepancy to the Landscape Architect prior to commencement. Failure to do so shall not be the responsibility of the Client or Landscape Architect.
Any form of replication of this drawing in full or in part without the written permission of NBR & PARTNERS Pty Ltd constitutes an infringement of the copyright.
ABN 16 002 247 565 © 2019

Drawing Title
FRAMEWORK DIAGRAM
SCALE:NTS

Project
NEW PRIMARY SCHOOL IN MULGOA RISE

Landscape Architect
NBRARCHITECTURE.
Sydney
61 2 9922 2344
Any form of replication of this drawing in full or in part without the written permission of NBR & PARTNERS Pty Ltd constitutes an infringement of the copyright.
Nominated Architects:
Andrew Duffin NSW 5602
NBR & Partners Pty Ltd VIC 51197

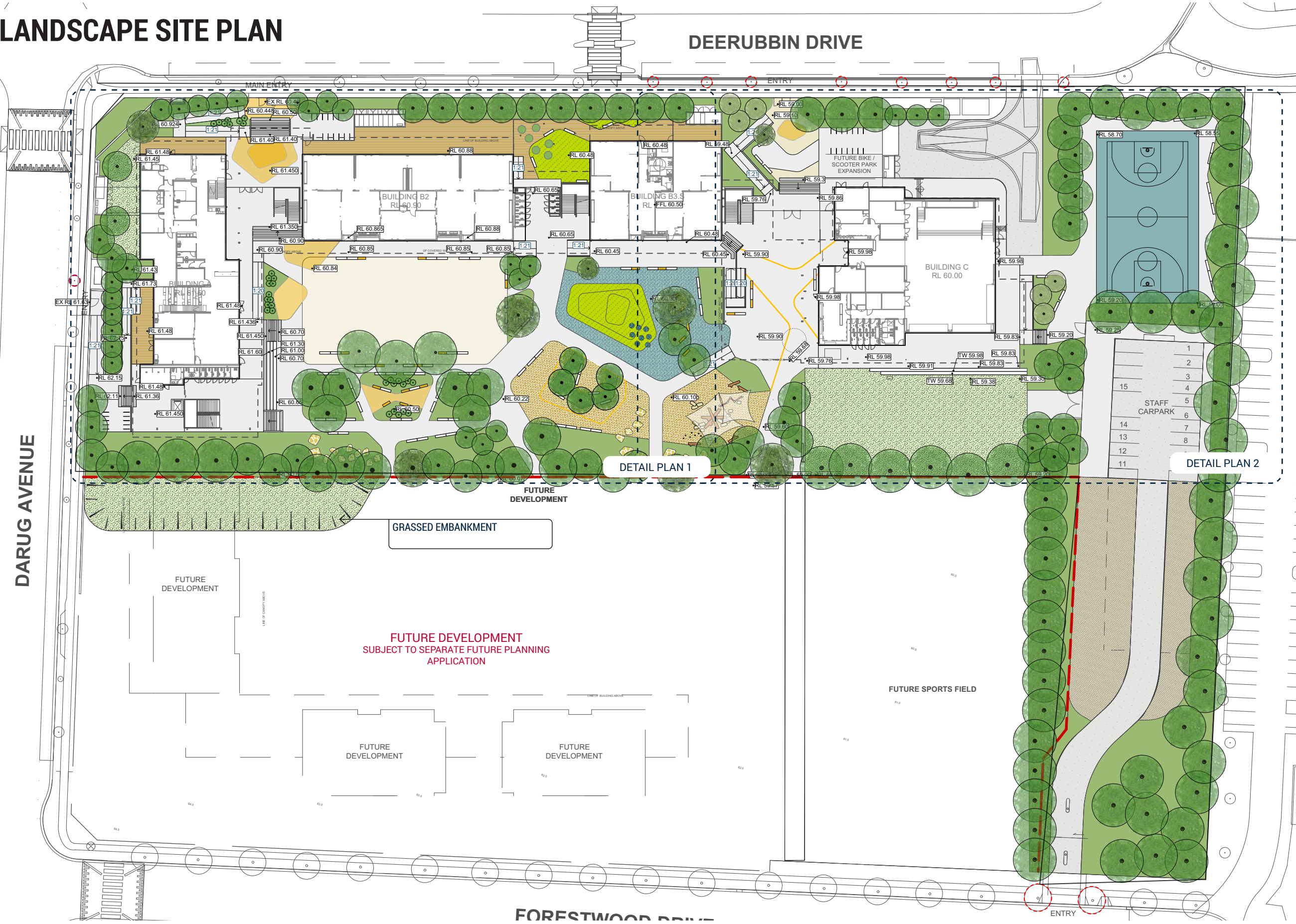
SSDA/ AUGUST 2021

Drawing Reference
L-SSDA- 004

Revision
03

© 2019
ABN 16 002 247 565

LANDSCAPE SITE PLAN



- LEGEND**
- SITE BOUNDARY
 - PROPOSED GROUND LEVEL
 - EXISTING GROUND LEVEL
 - TOP OF WALL HEIGHT
 - TREES TO BE REMOVED
 - EXISTING TREES
 - PROPOSED TREES
 - PAVING TYPE 1
STANDARD CONCRETE - BROOM FINISH
 - PAVING TYPE 2
COLOURED CONCRETE - ABRASIVE FINISH
 - PAVING TYPE 3
COLOURED CONCRETE - BROOM FINISH
 - PAVING TYPE 4
INTERPRETIVE LINE MARKING ON CONCRETE
 - PAVING TYPE 5
ASPHALT REFER TO ENGINEERS DETAILS
 - PAVING TYPE 6
SOFT FALL (2 COLOURS)
 - PAVING TYPE 7
PLAYGROUND MULCH
 - PAVING TYPE 7
PLEXIPAVE ON ASPHALT
 - PAVING TYPE 8
35MM SYNTHETIC TURF
 - PAVING TYPE 9
SANDSTONE STEPPING STONE
 - WALL TYPE 1
INSITU CONCRETE RETAINING WALL
 - WALL TYPE 2
INSITU CONCRETE HOB WALL
 - WALL TYPE 3
INSITU CONCRETE SEATING WALL
 - STAIR TYPE 1
INSITU CONCRETE STAIRS, HANDRAILS REFER TO ARCHITECTURAL DRAWING
 - CONCRETE TIERED SEATING
INSITU CONCRETE SEATING, HANDRAILS REFER TO ARCHITECTURAL DRAWING
 - TACTILES
 - OFF-SHELF PLANTER
 - MASS PLANTING
 - TURF
 - TIMBER PLAY ELEMENTS
TO BE INSTALLED BY SCHOOL
 - SHADE STRUCTURE
TO BE INSTALLED BY SCHOOL
 - BIKE RACKS
REFER ARCHITECTURAL DRAWINGS
 - FENCE AND GATE TYPES
REFER ARCHITECTURAL DRAWINGS

Disclaimer
These plans are for Client use and/or Council Approval only. Not intended for construction purpose unless specifically noted. The contractor intending to use these documents shall check and verify all works on site and report any discrepancy to the Landscape Architect prior to commencement. Failure to do so shall not be the responsibility of the Client or Landscape Architect.
Any form of replication of this drawing in full or in part without the written permission of NBR & PARTNERS Pty Ltd constitutes an infringement of the copyright.
ABN 16 002 247 565 © 2019

NOTE:
DRAWINGS TO BE READ IN CONJUNCTION WITH ARCHITECTURAL AND ENGINEERING PACKAGES

Drawing Title
LANDSCAPE SITE PLAN
SCALE: 1: 750 @ A3

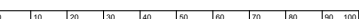
Project
NEW PRIMARY SCHOOL IN MULGOA RISE



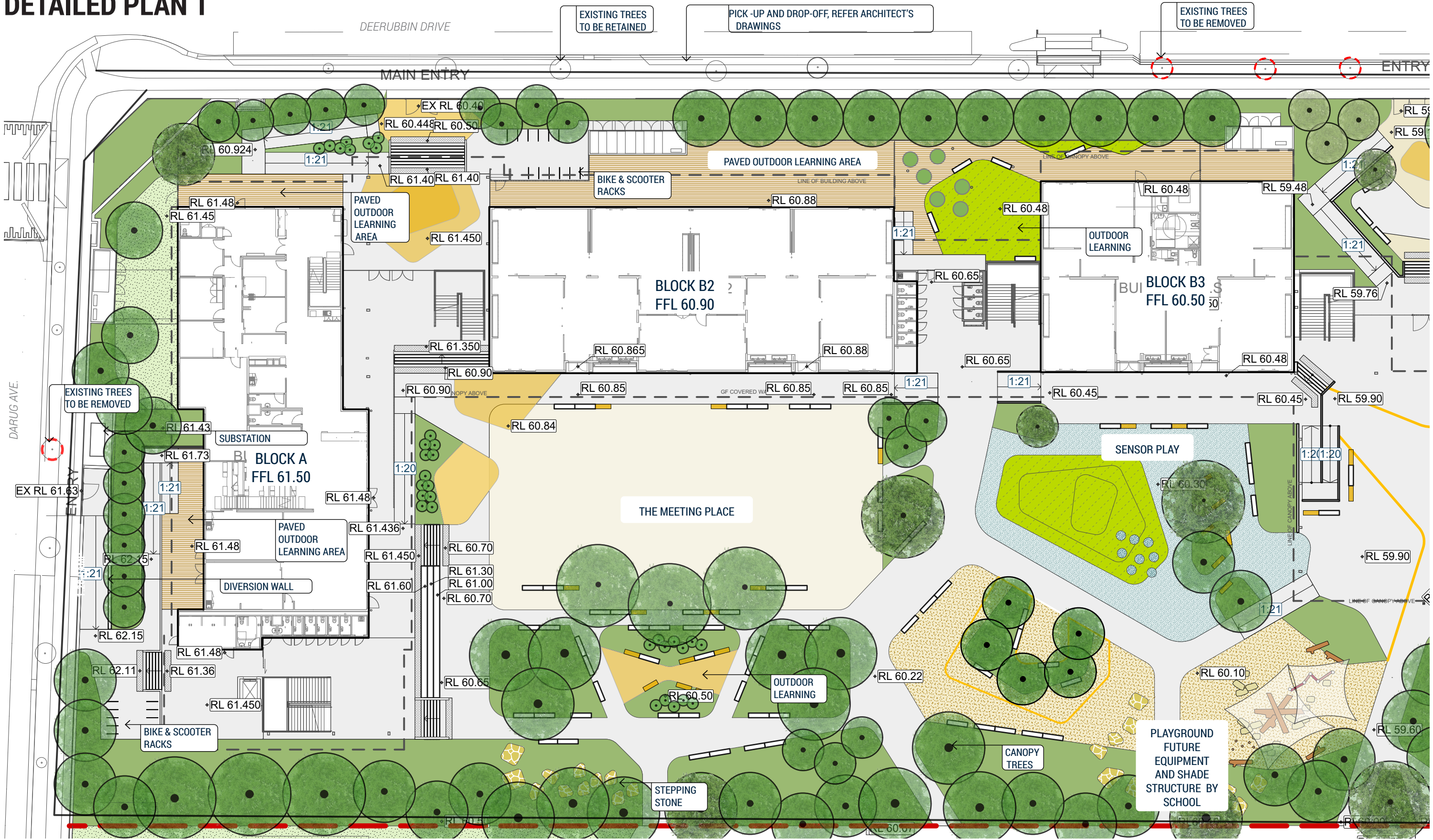
Landscape Architect
NBRARCHITECTURE.
LANDSCAPE
Sydney
61 2 9922 2344
Any form of replication of this drawing in full or in part without the written permission of NBR & PARTNERS Pty Ltd constitutes an infringement of the copyright.
Nominated Architects:
Andrew Duffin NSW 5602
NBR & Partners Pty Ltd VIC 51197
© 2019
ABN 16 002 247 565

SSDA/ AUGUST 2021

Drawing Reference
L-SSDA- 005
Revision
03



DETAILED PLAN 1



Disclaimer
These plans are for Client use and/or Council Approval only. Not intended for construction purpose unless specifically noted. The contractor intending to use these documents shall check and verify all works on site and report any discrepancy to the Landscape Architect prior to commencement. Failure to do so shall not be the responsibility of the Client or Landscape Architect.
Any form of replication of this drawing in full or in part without the written permission of NBR & PARTNERS Pty Ltd constitutes an infringement of the copyright.
ABN 16 002 247 565 © 2019

NOTE:
DRAWINGS TO BE READ IN CONJUNCTION WITH ARCHITECTURAL AND ENGINEERING PACKAGES

Drawing Title
DETAILED PLAN 1
SCALE: 1: 300 @ A3

Project
NEW PRIMARY SCHOOL IN MULGOA RISE



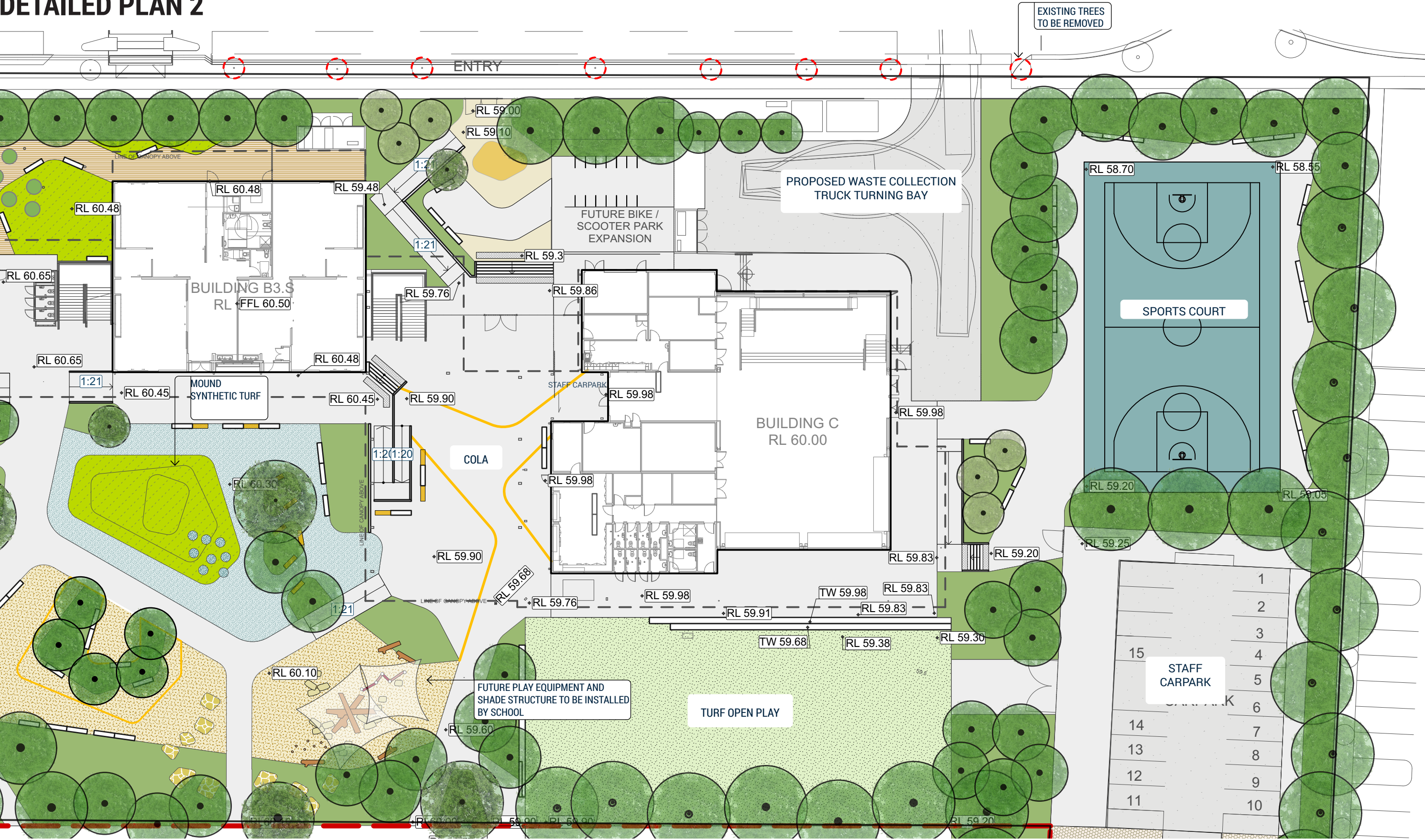
Landscape Architect
NBR & PARTNERS
Sydney
61 2 9922 2344
Any form of replication of this drawing in full or in part without the written permission of NBR & PARTNERS Pty Ltd constitutes an infringement of the copyright.
Nominated Architects:
Andrew Duffin NSW 5602
NBR & Partners Pty Ltd VIC 51197
© 2019
ABN 16 002 247 565

SSDA/ AUGUST 2021

Drawing Reference
L-SSDA- 006

Revision
03

DETAILED PLAN 2



Disclaimer
These plans are for Client use and/or Council Approval only. Not intended for construction purpose unless specifically noted. The contractor intending to use these documents shall check and verify all works on site and report any discrepancy to the Landscape Architect prior to commencement. Failure to do so shall not be the responsibility of the Client or Landscape Architect.
Any form of replication of this drawing in full or in part without the written permission of NBRSPARTNERS Pty Ltd constitutes an infringement of the copyright.
ABN 16 002 247 565 © 2019

NOTE:
DRAWINGS TO BE READ IN CONJUNCTION WITH ARCHITECTURAL AND ENGINEERING PACKAGES

Drawing Title
DETAILED PLAN 2
SCALE: 1: 300 @ A3

Project
NEW PRIMARY SCHOOL IN MULGOA RISE



Landscape Architect
NBRSPARTNERS
LANDSCAPE
Sydney
61 2 9922 2344
Any form of replication of this drawing in full or in part without the written permission of NBRSPARTNERS Pty Ltd constitutes an infringement of the copyright.
Nominated Architects:
Andrew Duffin NSW 5602
NBRSPARTNERS Pty Ltd VIC 51197
© 2019
ABN 16 002 247 565

SSDA/ AUGUST 2021

Drawing Reference
L-SSDA- 007
Revision
03

MATERIALS PALETTE



CONCRETE PAVEMENT BROOMED & EXPOSED AGGREGATE FINISH (SCHOOL ENTRIES)



COLOURED CONCRETE PAVEMENT- SUNDANCE



COLOURED CONCRETE PAVEMENT- TERRACOTTA



INDICATIVE COLOURED CONCRETE GRAPHIC



SYNTHETIC TURF



TIMBER FENCE
LOCATION REFER TO ARCHITECTURAL DRAWINGS



CONCRETE SEATING



MODULAR SEATING

PLANTING PALETTE

TREES



Angophora costata



Eucalyptus punctata



Banksia integrifolia



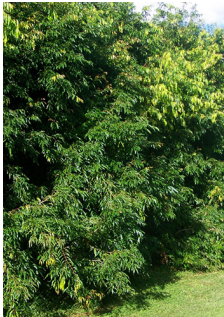
Tristaniopsis laurina



Lagerstroemia indica
'Natchez'



Callistemon viminalis



Waterhousea floribunda
'Sweeper'

SHRUBS



Xanthorrhoea australis



Banksia ericifolia



Banksia spinulosa



Bursaria spinosa



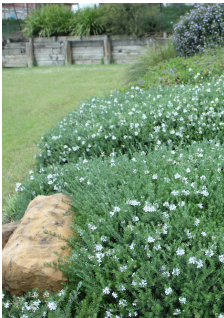
Doryanthes excelsa



Westringia fruticosa



Rhagodia spinescens



Westringia fruticosa 'Mundi'



Correa alba



Alpinia caerulea

GRASSES AND GROUNDCOVERS



Lomandra longifolia



Lomandra 'Tankia'



Lomandra 'Lime Wave'



Themeda australis



Casuarina glauca 'Cousin It'



Scaevola aemula



Sarcozona praecox



Microlaena stipoides



Senecio serpens

Disclaimer
These plans are for Client use and/or Council Approval only. Not intended for construction purpose unless specifically noted. The contractor intending to use these documents shall check and verify all works on site and report any discrepancy to the Landscape Architect prior to commencement. Failure to do so shall not be the responsibility of the Client or Landscape Architect.
Any form of replication of this drawing in full or in part without the written permission of NBR&S & PARTNERS Pty Ltd constitutes an infringement of the copyright.
ABN 16 002 247 565 © 2019

NOTE:
IMAGES OF SPECIES ARE SELECTIVE ONLY, REFER PLANTING SCHEDULE FOR ALL SPECIES RPOPOSED.

Drawing Title
PLANTING PALETTE

Project
NEW PRIMARY SCHOOL IN MULGOA RISE

Landscape Architect
NBR&SARCHITECTURE.
LANDSCAPE.
Sydney
61 2 9922 2344
Any form of replication of this drawing in full or in part without the written permission of NBR&S-PARTNERS Pty Ltd constitutes an infringement of the copyright.
Nominated Architects:
Andrew Duffin NSW 5602
NBR&S & Partners Pty Ltd VIC 51197
© 2019
ABN 16 002 247 565
nbrsarchitecture.com

SSDA/ AUGUST 2021

Drawing Reference
L-SSDA- 009
Revision
03

0 10 20 30 40 50 60 70 80 90 100

PLANTING ZONE



Disclaimer

These plans are for Client use and/or Council Approval only. Not intended for construction purpose unless specifically noted. The contractor intending to use these documents shall check and verify all works on site and report any discrepancy to the Landscape Architect prior to commencement. Failure to do so shall not be the responsibility of the Client or Landscape Architect.

Any form of replication of this drawing in full or in part without the written permission of NBSR & PARTNERS Pty Ltd constitutes an infringement of the copyright
ABN 16 002 247 565 © 2019

Drawing Title

PLANTING ZONE

SCALE:1: 1000 @ A3

Project

NEW PRIMARY SCHOOL IN MULGOA RISE



Landscape Architect

NBRSARCHITECTURE.

Sydney
61 2 9232 3344
LANDSCAPE
phsarchitecture.com

Any form of replication of this drawing in full or in part without the written permission of NBRSPARTNERS Pty Ltd constitutes an infringement of the copyright.

Nominated Architects:
Andrew Duffin NSW 5602 © 2019
NBRS & Partners Pty Ltd VIC 51197 ABN 16 002 247 565

SSDA/ AUGUST 2021

Drawing Reference
L-SSDA- 0010

03

© 2019
ABN 16 002 247 565

PLANTING SCHEDULE

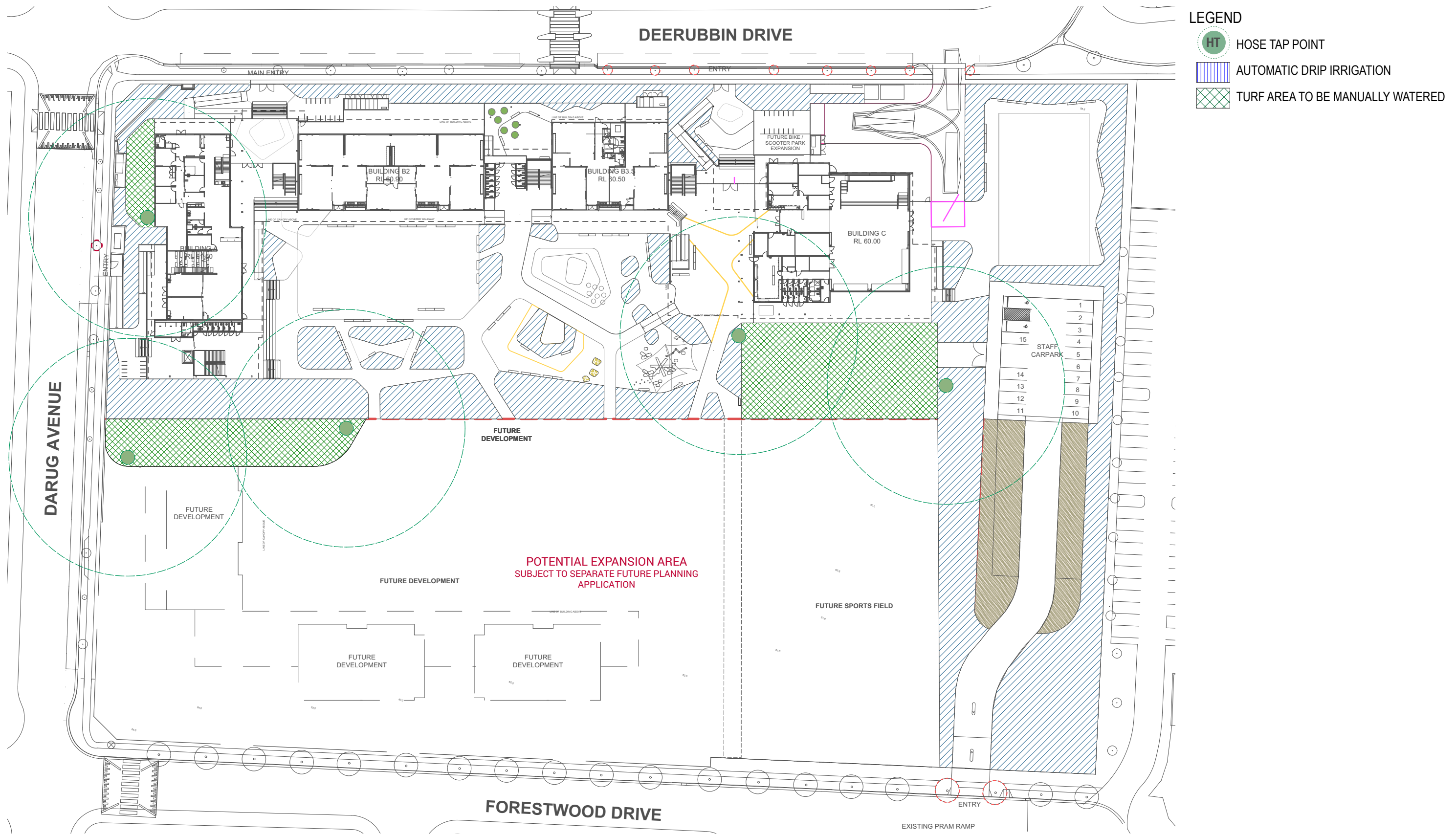
ID	Botanic Name	Common Name	Pot Size	Density	Mature Height	Quantity 2*
TREES (SITE WIDE)						
ANGcos	Angophora costata	Smooth-barked Apple	100L	As Indicated	15 - 20m	18
ARAh	Araucaria heterophylla	Norfolk Island Pine	100L	As Indicated	over 30m	4
BANint	Banksia integrifolia	Coastal Banksia	100L	As Indicated	5 - 10m	16
CALvim	Callistemon viminalis	Callistemon	100L	As Indicated	5 - 8m	13
CUPana	Cupaniopsis anacardioides	Tuckeroo	100L	As Indicated	10 - 15m	18
EUCpun	Eucalyptus punctata*	Grey Gum	100L	As Indicated	25 - 30m	25
EUCter	Eucalyptus tereticornis*	Forest Red Gum	100L	AS indicated	over 30m	21
GLOfer	Glochidion ferdinandi	Cheese Tree	100L	AS indicated	5-10m	2
HYMfla	Hymenosporum flavum	Native frangipani	100L	AS indicated	20-25m	5
LAGnat	Lagerstroemia indica 'Natchez'	Crepe Myrtle	100L	AS indicated	5 - 10m	5
MELqui	Melaleuca quinquenervia	Broad-leafed Paperbark	100L	AS indicated	10 - 15m	14
SYZaus	Syzygium australe	Brush Cherry	100L	AS indicated	5 - 10m	13
TRIlau	Tristaniopsis laurina*	Water Gum	100L	AS indicated	5 - 10m	9
XANAus	Xanthorrhoea australis	Grass Tree	1.0m Clear Trunk Height	As Indicated	1.50 - 3m	32
TREES TOTAL						195

ID	Botanic Name	Common Name	Pot Size	Density/m2	Percentage of planted area**	Quantity2*
ZONE 1: ENTRY GARDEN PLANTING		646	SQM			
Be	Banksia ericifolia	Heath Banksia	200mm	3	10%	194
Bs	Banksia serrata *	Old Man Banksia	200mm	2	2%	26
Bs	Banksia spinulosa	Hairpin Banksia	200mm	4	5%	129
Bu	Bursaria spinosa *	Blackthorn	200mm	4	3%	65
Cca	Callistemon citrinus 'Anzac'	Bottlebrush	200mm	4	5%	129
Cve	Callistemon viminalis 'Endeavour'	Bottlebrush	200mm	4	5%	129
De	Doryanthes excelsa	Gymea Lilly	45L	-	-	7
Gj	Grevillea juniperina *	Juniper-leaf grevillea	200mm	4	10%	258
HV	Hardenbergia violacea	Flase Sarsparilla	150mm	4	5%	129
Lt	Leptospermum trinervium *	Slender Tea Tree	200mm	4	5%	129
Lc	Lomandra cylindrica 'Lime Wave'	Lomandra Lime Wave	tubestock	8	10%	517
LI	Lomandra longifolia *	Spiny Mat Rush	tubestock	8	10%	517
Lt	Lomandra tanika	Tanika Lomandra	tubestock	8	10%	517
Lb	Leucophyta brownii	Cushion bush	200mm	4	5%	129
Rs	Rhagodia spinescens	Creeping Saltbush	200mm	4	5%	129
Wm	Westringia fruticosa 'Mundi'	Coast Rosemary	200mm	3	5%	97
Wf	Westringia fruticosa	Coast Rosemary	200mm	5	5%	162
				Subtotal	100%	3,263
ZONE 2: SWALE GARDEN PLANTING		465	SQM			
Dic	Dichelachne crinita	Longhair Plumegrass	tubestock	8	5%	186
Gs	Gahnia sieberiana	Red-Fruit Saw Sedge	tubestock	8	10%	372
Ju	Juncus usitatus *	Common Rush	tubestock	8	10%	372
Lc	Lomandra cylindrica 'Lime Wave'	Lomandra Lime Wave	tubestock	8	15%	558
Lco	Lomandra confertifolia 'Little Can'	Dwarf Lomandra	tubestock	8	10%	372
LI	Lomandra longifolia *	Spiny Mat Rush	tubestock	8	15%	558
Lt	Lomandra tanika	Tanika Lomandra	tubestock	8	10%	372
Ms	Microlaena stipoides	Weeping Grass	tubestock	6	10%	279
Pp	Poa poiiformis 'Kingsdale'	Kingsdale Poa	tubestock	7	5%	163
Ta	Themeda australis *	Kangaroo Grass	tubestock	6	10%	279
Tt	Themeda triandra	Kangaroo Grass	tubestock	6	5%	140
				Subtotal	100%	3,092

ID	Botanic Name	Common Name	Pot Size	Density/m2	Percentage of planted area**	Quantity2*
ZONE 3: CENTRAL PLAY & BUSH TUCKER PLANTIN		741	SQM			
CA	Correa alba	White Correa	150mm	4	3%	89
Cag	Casuarina glauca 'Cousin It'	Dwarf Casuarina	150mm	4	3%	89
Cve	Callistemon viminalis 'Endeavour'	Bottlebrush	200mm	4	5%	148
Ch	Cissus hypoglauca	Cissus Vine	150mm	4	5%	148
GS	Grevillea Sandra Gordon	Sandra Gordon	150mm	4	5%	148
Gj	Grevillea juniperina *	Juniper-leaf grevillea	200mm	4	8%	237
Hp	Helichrysium petiolare	Licorice Plant	150mm	4	10%	296
Lc	Lomandra cylindrica 'Lime Wave'	Lomandra Lime Wave	tubestock	8	12%	711
LI	Lomandra longifolia *	Spiny Mat Rush	tubestock	8	15%	889
Lt	Lomandra tanika	Tanika Lomandra	tubestock	8	10%	593
Tt	Themeda triandra	Kangaroo Grass	tubestock	8	3%	178
Rop	Rosmarinus officinalis Prostratus	Creeping Rosemary	150mm	6	5%	222
SA	Scaevola aemula	Fairy Fan Flower	150mm	4	3%	89
SS	Senecio serpens	Blue Chalk Stick	150mm	4	3%	89
Sp	Sarcosoma praecox	Noon Flower	150mm	6	5%	222
Ts	Tetragonia spp.	New Zealand Spinach	150mm	6	5%	222
				Subtotal	100%	4,372
ZONE 4: PERIMETER PLANTING		2137	SQM			
Cag	Carpobrotus glaucescens	Pig Face	200mm	4	5%	427
Hm	Hardenbergia violacea Meema	Purple Coral Pe	200mm	4	5%	427
Hp	Helichrysium petiolare	Licorice Plant	150mm	4	5%	427
Lc	Lomandra cylindrica 'Lime Wave'	Lomandra Lime Wave	tubestock	6	10%	1,282
LI	Lomandra longifolia *	Spiny Mat Rush	tubestock	6	10%	1,282
Lt	Lomandra tanika	Tanika Lomandra	tubestock	5	10%	1,069
Ms	Microlaena stipoides	Weeping Grass	tubestock	5	5%	534
PL	Poa labillardieri	Tussock Grass	tubestock	5	5%	534
Ta	Trachelospermum asiaticum	Asiatic Jasmine	150mm	5	5%	534
Ta	Themeda australis *	Kangaroo Grass	tubestock	5	5%	534
Rop	Rosmarinus officinalis Prostratus	Creeping Rosemary	150mm	6	10%	1,282
SA	Scaevola aemula	Fairy Fan Flower	150mm	3	5%	321
SS	Senecio serpens	Blue Chalk Stick	150mm	3	10%	641
Wm	Westringia fruticosa 'Mundi'	Coast Rosemary	200mm	3	5%	321
Wf	Westringia fruticosa	Coast Rosemary	200mm	3	5%	321
				Subtotal	100%	9,937
ZONE 5: SPORTS ZONE PLANTING		423	SQM			
Cag	Carpobrotus glaucescens	Pig Face	200mm	4	10%	169
Hp	Helichrysium petiolare	Licorice Plant	150mm	4	5%	85
Hm	Hardenbergia violacea Meema	Purple Coral Pe	200mm	4	10%	169
Lc	Lomandra cylindrica 'Lime Wave'	Lomandra Lime Wave	tubestock	8	20%	677
LI	Lomandra longifolia *	Spiny Mat Rush	tubestock	8	15%	508
Lt	Lomandra tanika	Tanika Lomandra	tubestock	8	20%	677
Ta	Trachelospermum asiaticum	Asiatic Jasmine	150mm	4	5%	85
PL	Poa labillardieri	Tussock Grass	tubestock	8	10%	338
PA	Pennisetum alopecuroides	Swamp Foxtail	150mm	6	5%	127
				Subtotal	100%	2,369
MASSPLANTING TOTAL						23,033

*NOTE: Plant species as per Penrith City Council native species list
** NOTE: Plant quantities are subject to detail design and will change

PRELIMINARY IRRIGATION PLAN



Disclaimer
These plans are for Client use and/or Council Approval only. Not intended for construction purpose unless specifically noted. The contractor intending to use these documents shall check and verify all works on site and report any discrepancy to the Landscape Architect prior to commencement. Failure to do so shall not be the responsibility of the Client or Landscape Architect.

Any form of replication of this drawing in full or in part without the written permission of NBRIS & PARTNERS Pty Ltd constitutes an infringement of the copyright.
ABN 16 002 247 565 © 2019

Drawing Title
PRELIMINARY IRRIGATION PLAN
SCALE:1: NTS

Project
NEW PRIMARY SCHOOL IN MULGOA RISE



Landscape Architect
NBRISARCHITECTURE.
LANDSCAPE
Sydney
61 2 9922 2344
Any form of replication of this drawing in full or in part without the written permission of NBRIS & PARTNERS Pty Ltd constitutes an infringement of the copyright.
Nominated Architects:
Andrew Duffin NSW 5602
NBRIS & Partners Pty Ltd VIC 51197

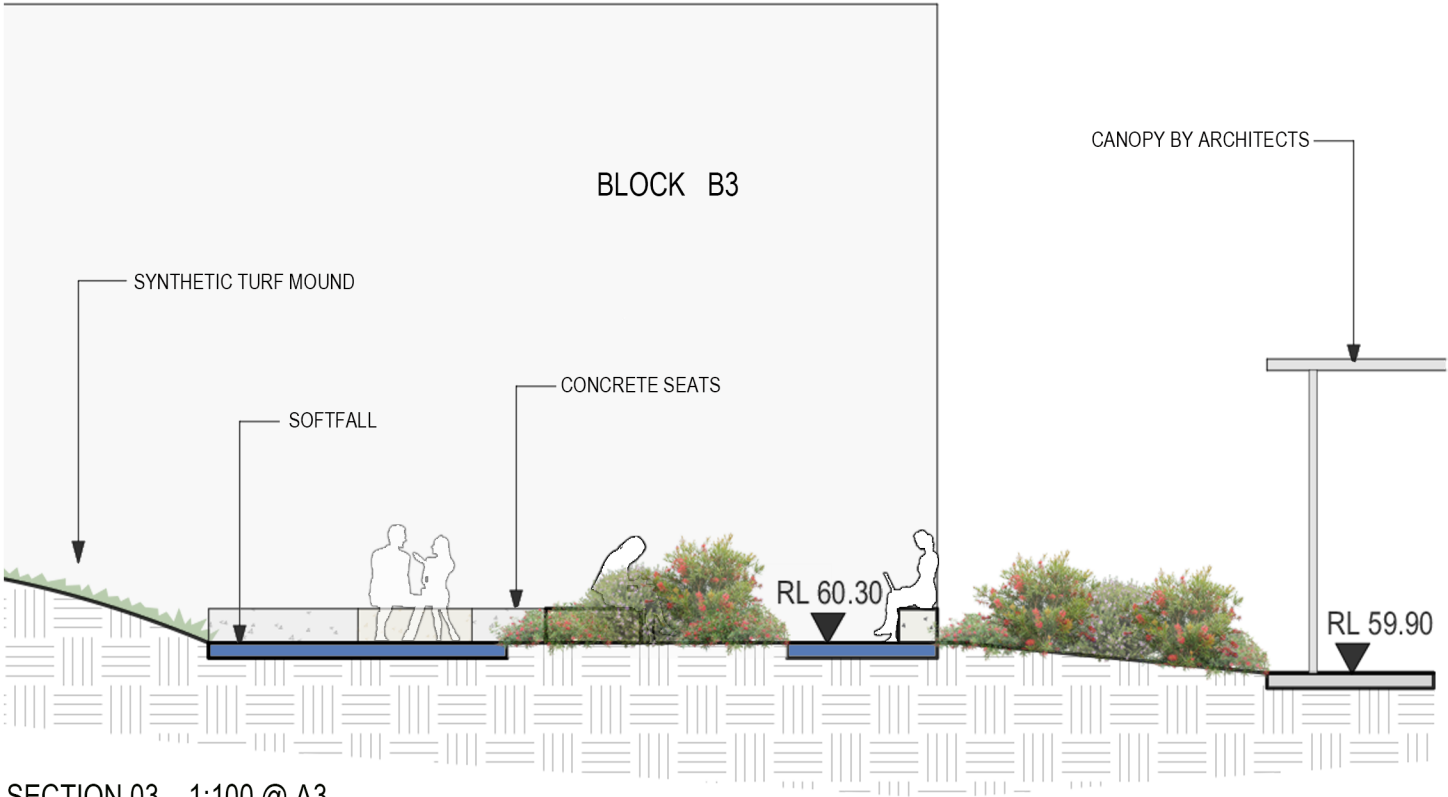
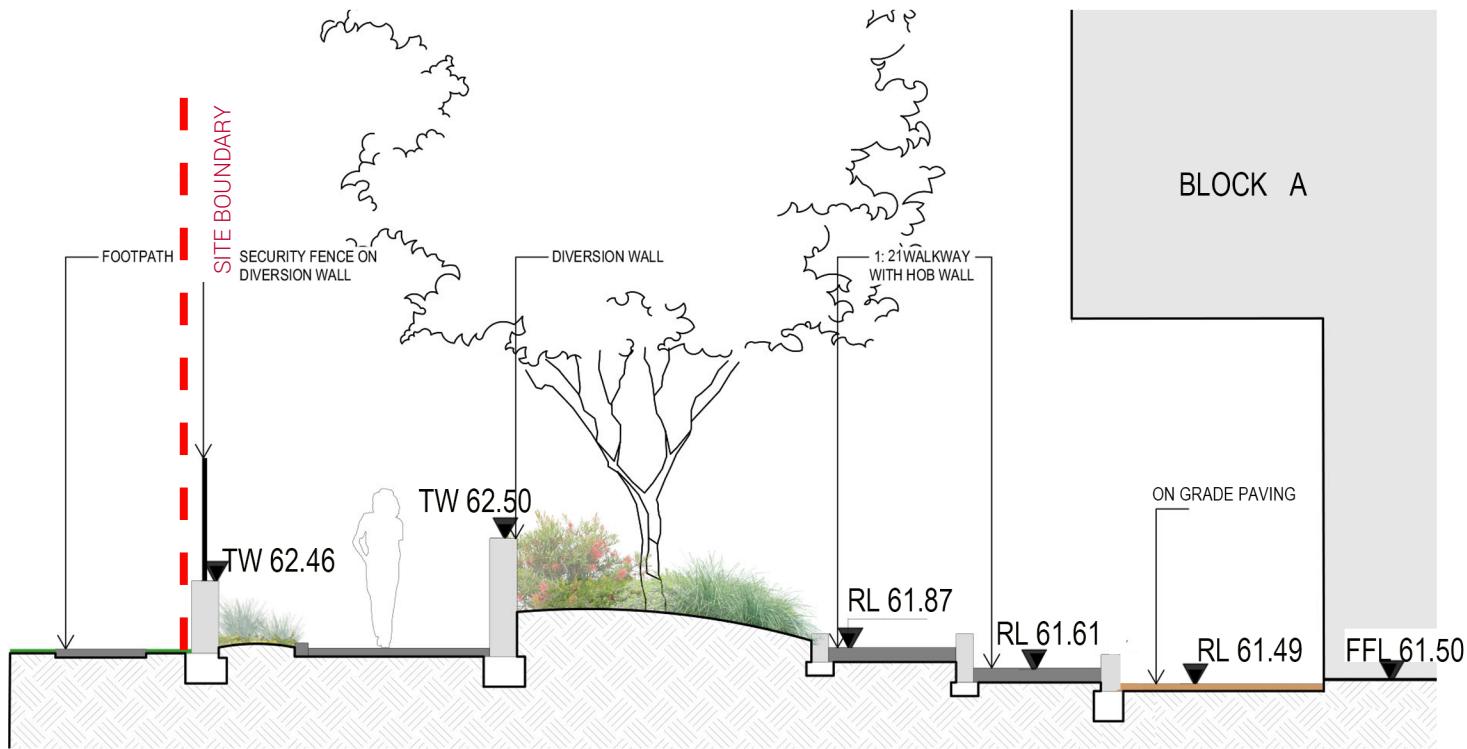
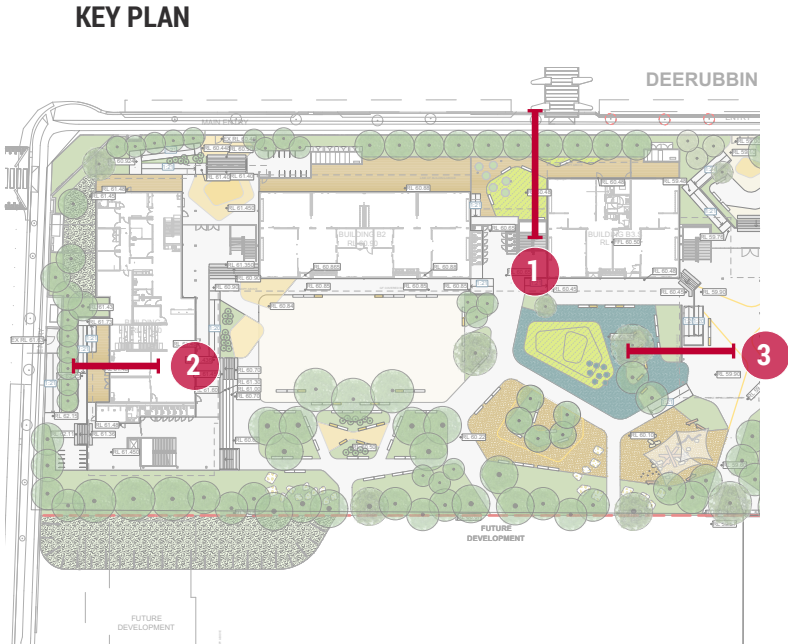
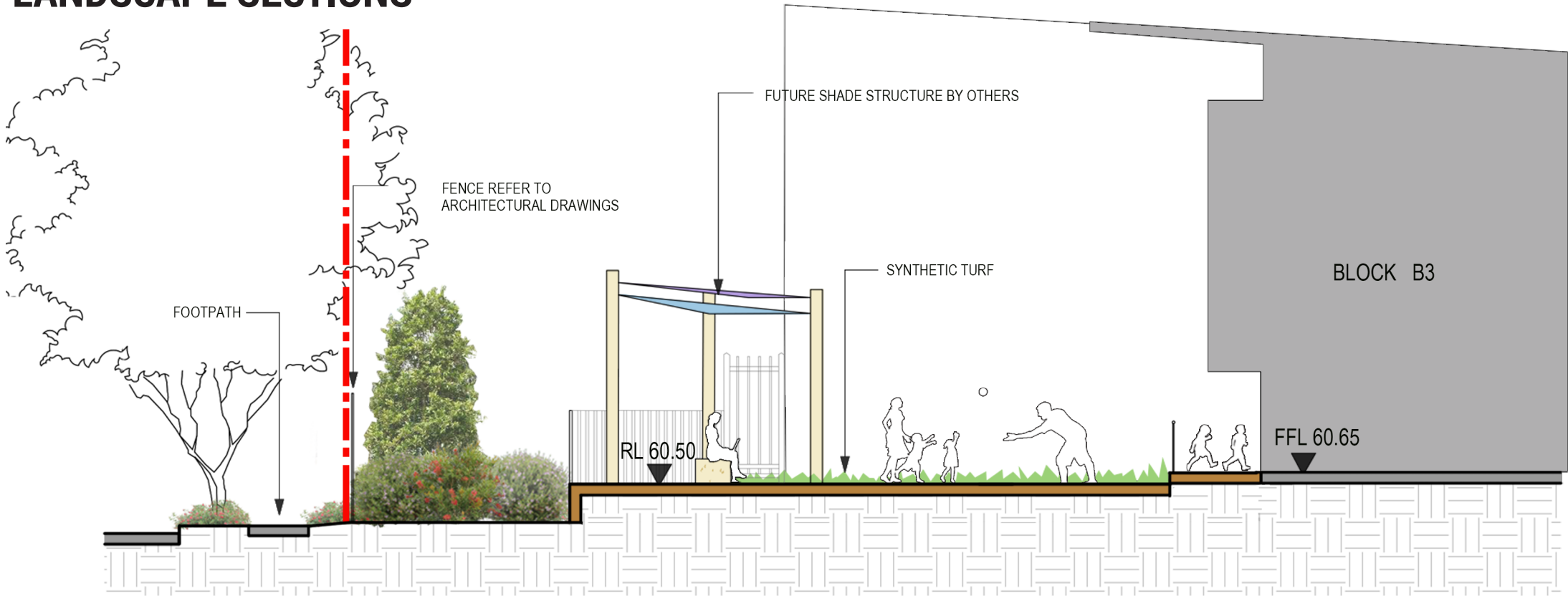
SSDA/ AUGUST 2021

Drawing Reference
L-SSDA- 0012

Revision
03

© 2019
ABN 16 002 247 565

LANDSCAPE SECTIONS



Disclaimer
These plans are for Client use and/or Council Approval only. Not intended for construction purpose unless specifically noted. The contractor intending to use these documents shall check and verify all works on site and report any discrepancy to the Landscape Architect prior to commencement. Failure to do so shall not be the responsibility of the Client or Landscape Architect.
Any form of replication of this drawing in full or in part without the written permission of NBRIS & PARTNERS Pty Ltd constitutes an infringement of the copyright.
ABN 16 002 247 565 © 2019

Drawing Title
LANDSCAPE SECTIONS
SCALE: 1:100 @A3

Project
NEW PRIMARY SCHOOL IN MULGOA RISE

Landscape Architect
NBRISARCHITECTURE.
LANDSCAPE
Sydney
61 2 9922 2344
Any form of replication of this drawing in full or in part without the written permission of NBRIS & PARTNERS Pty Ltd constitutes an infringement of the copyright.
Nominated Architects:
Andrew Duffin NSW 5602
NBRIS & Partners Pty Ltd VIC 51197
© 2019
ABN 16 002 247 565

SSDA/ AUGUST 2021

Drawing Reference
L-SSDA- 0013

Revision
03