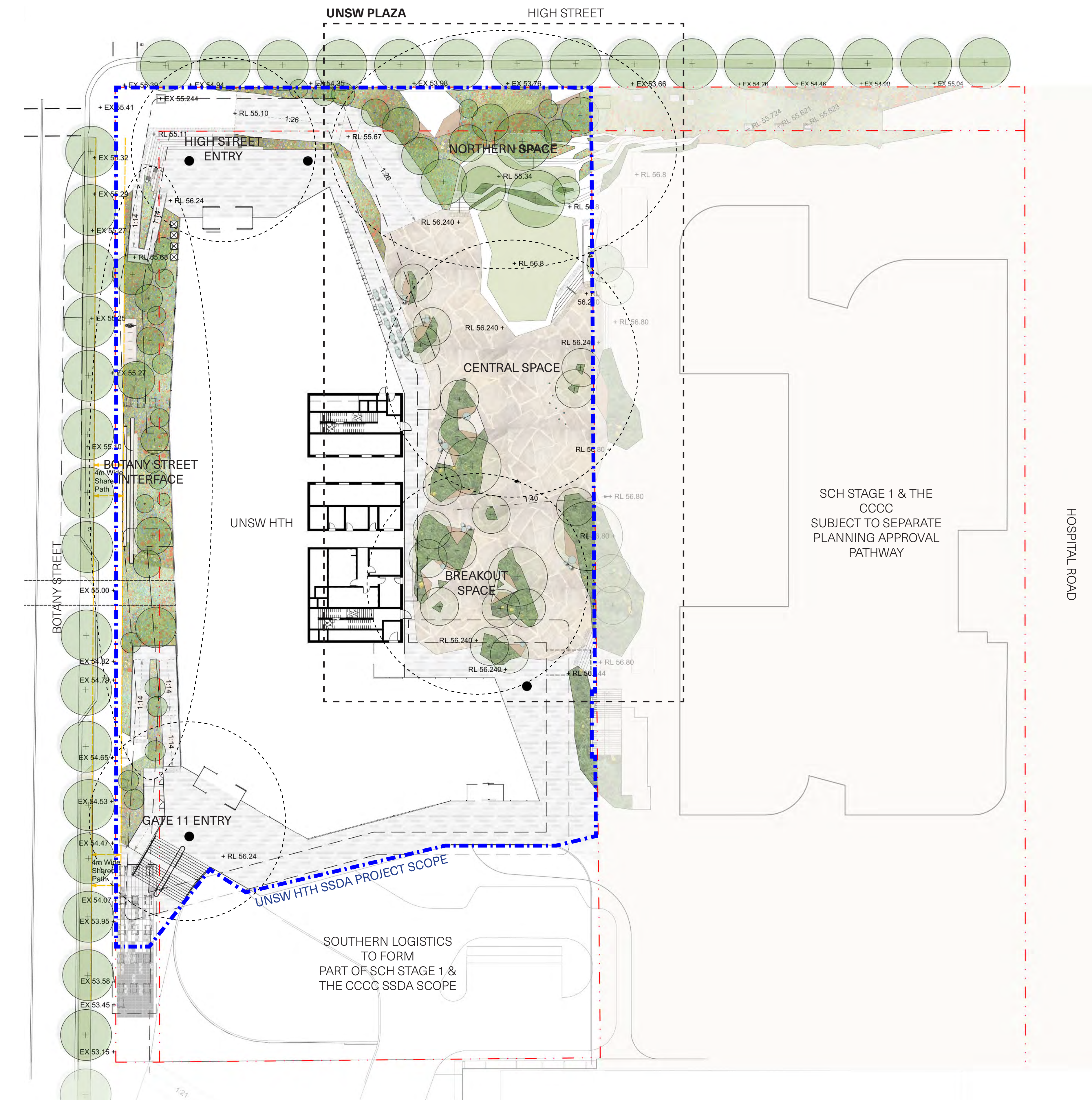
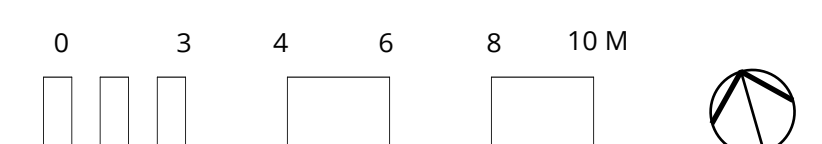


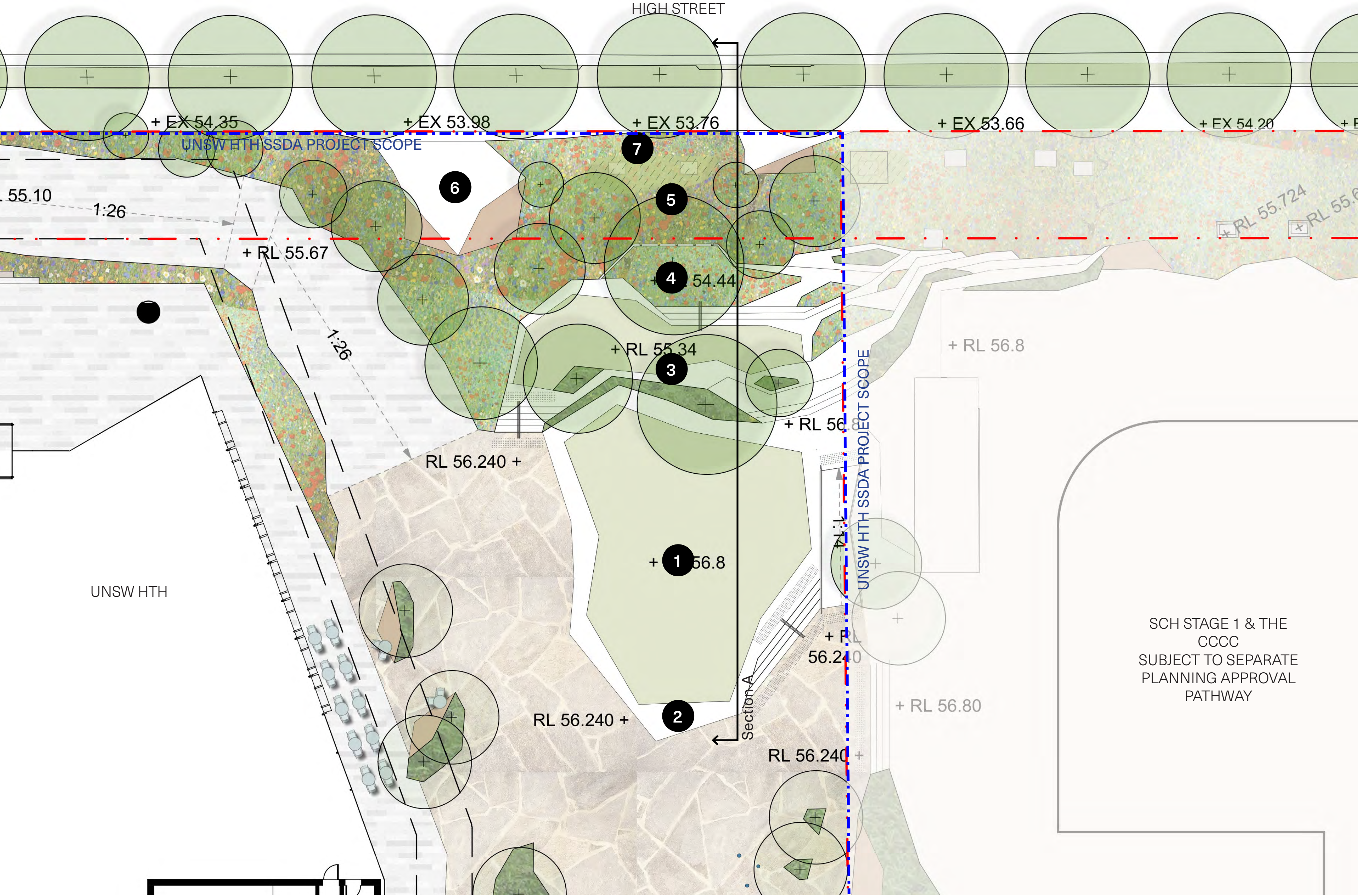
Site Plan



Drawing List

Drawing Number	Drawing Name	Scale	Revision
20084_SSDA-001	Site Plan	1:300 @A1	Draft
20084_SSDA-002	Northern Space Plan	1:150 @A1	Draft
20084_SSDA-003	Northern Space Sections	1:200 @A1	Draft
20084_SSDA-004	Northern Space Perspective	NTS	Draft
20084_SSDA-005	Central Space Plan	1:150 @A1	Draft
20084_SSDA-006	Central Space Sections	1:200 @A1	Draft
20084_SSDA-007	Central Space Perspective	NTS	Draft
20084_SSDA-008	Breakout Space Plan	1:150 @A1	Draft
20084_SSDA-009	Breakout Space Sections	1:200 @A1	Draft
20084_SSDA-010	Breakout Space Perspective	NTS	Draft
20084_SSDA-011	High Street Entry Plan	1:150 @A1	Draft
20084_SSDA-012	High Street Entry Sections	1:200 @A1	Draft
20084_SSDA-013	High Street Entry Perspective	NTS	Draft
20084_SSDA-014	Botany St Plan	1:150 @A1	Draft
20084_SSDA-015	Botany St Sections	1:200 @A1	Draft
20084_SSDA-016	Gate 11 Entry Plan	1:150 @A1	Draft





- 1/ Raised turf space for flexible use
- 2/ Seating edge with integrated stairs and 1:14 ramp
- 3/ Informal terraced seating platforms integrating pockets of planting
- 4/ Opportunities for biofiltration/WSUD
- 5/ 1:3 slope with Eastern Suburbs Banksia Scrub plant community
- 6/ Seating area adjacent to High Street footpath
- 7/ Existing stormwater infrastructure to be integrated within landscape treatment

The Northern Space provides an innovative response to a steep level change from High Street into the plaza. This is achieved via a combination of informal seating platforms and dense, folding landscapes reminiscent of the original dunal landscape.

The Northern Space receives notable solar exposure due to its northerly aspect. Elevated platforms embedded amongst lawn and planting provide the opportunity for informal seating within a sunny setting whilst still establishing a cooler, shaded environment.

A raised lawn space extending from the Northern Space into the plaza provides amenity for informal rest and play, as well as servicing a range of outdoor events.

Character Precedents





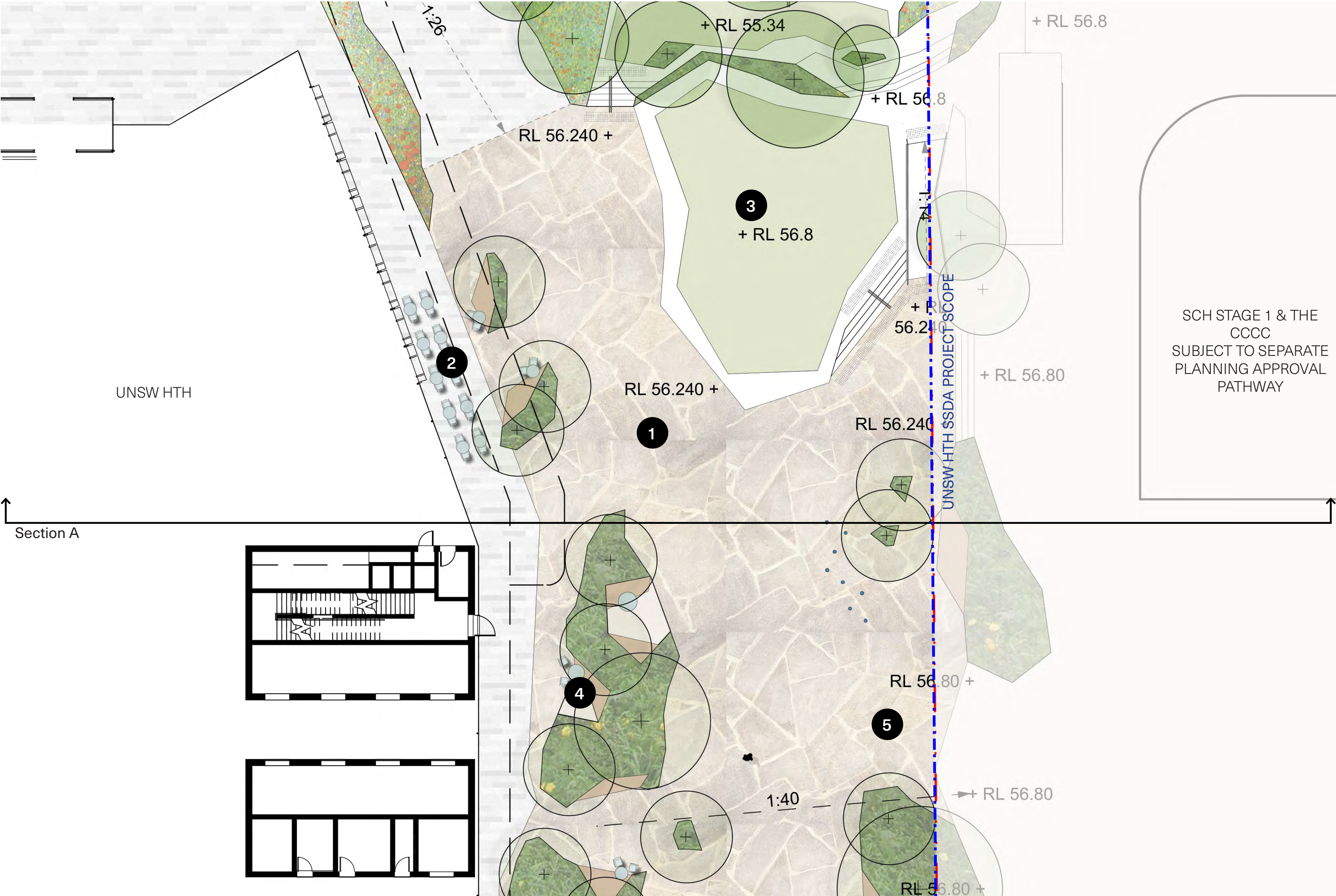
- 1/ Raised turf space for flexible use
- 2/ Seating edge with integrated stairs and 1:14 ramp
- 3/ Informal terraced seating platforms integrating pockets of planting
- 4/ Opportunities for biofiltration/WSUD
- 5/ 1:3 slope with Eastern Suburbs Banksia Scrub plant community
- 6/ Seating area adjacent to High Street footpath





- 1/ Raised turf space for flexible use
- 2/ Seating edge with integrated stairs and 1:14 ramp
- 3/ Informal terraced seating platforms integrating pockets of planting
- 4/ Opportunities for biofiltration/WSUD
- 5/ 1:3 slope with Eastern Suburbs Banksia Scrub plant community
- 6/ Seating area adjacent to High Street footpath

Central Space - Landscape Plan



Legend

- 1/ Open plaza space for flexible uses with feature paving
- 2/ External F&B space with fixed and loose furniture
- 3/ Assessable turf area adjacent northern terraces
- 4/ Intimate dwell spaces amongst lush planting
- 5/ Assessable 1:40 grade ensuring compliant connection into SCH Stage 1 & the CCCC

The Central Space is the heart of UNSW HTH. It is a multifunctional space comprised of several smaller zones with distinct character and function.

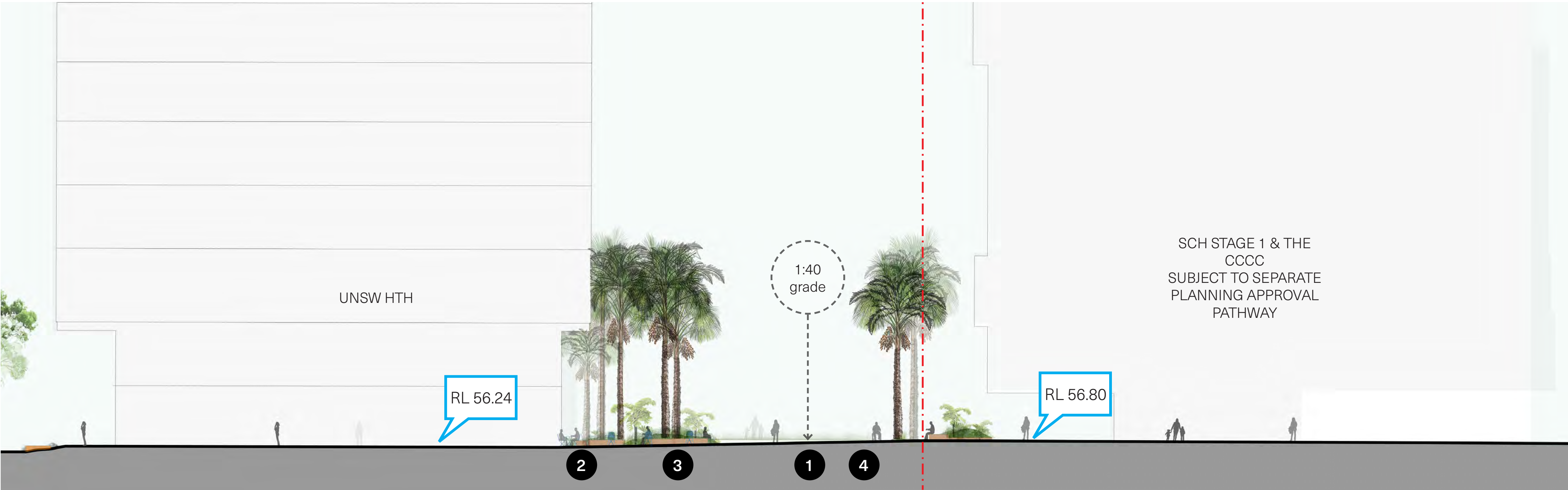
The Central Space provides a larger open space and gives opportunity to host events, as well as servicing its everyday transitional nature. The space is flexible and can be used for a variety of purposes throughout the year.

The north-eastern section provides opportunity for a F&B space offering an inside-outside experience in which the boundaries are blurred.

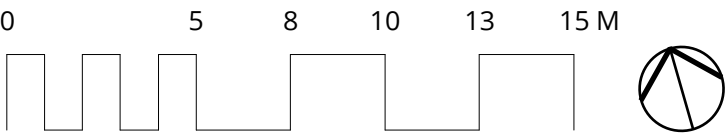
The southern gully space is comprised of intimate dwelling spaces amongst dense rainforest planting to establish a cool, shaded space for rest.

Indicative Precedents



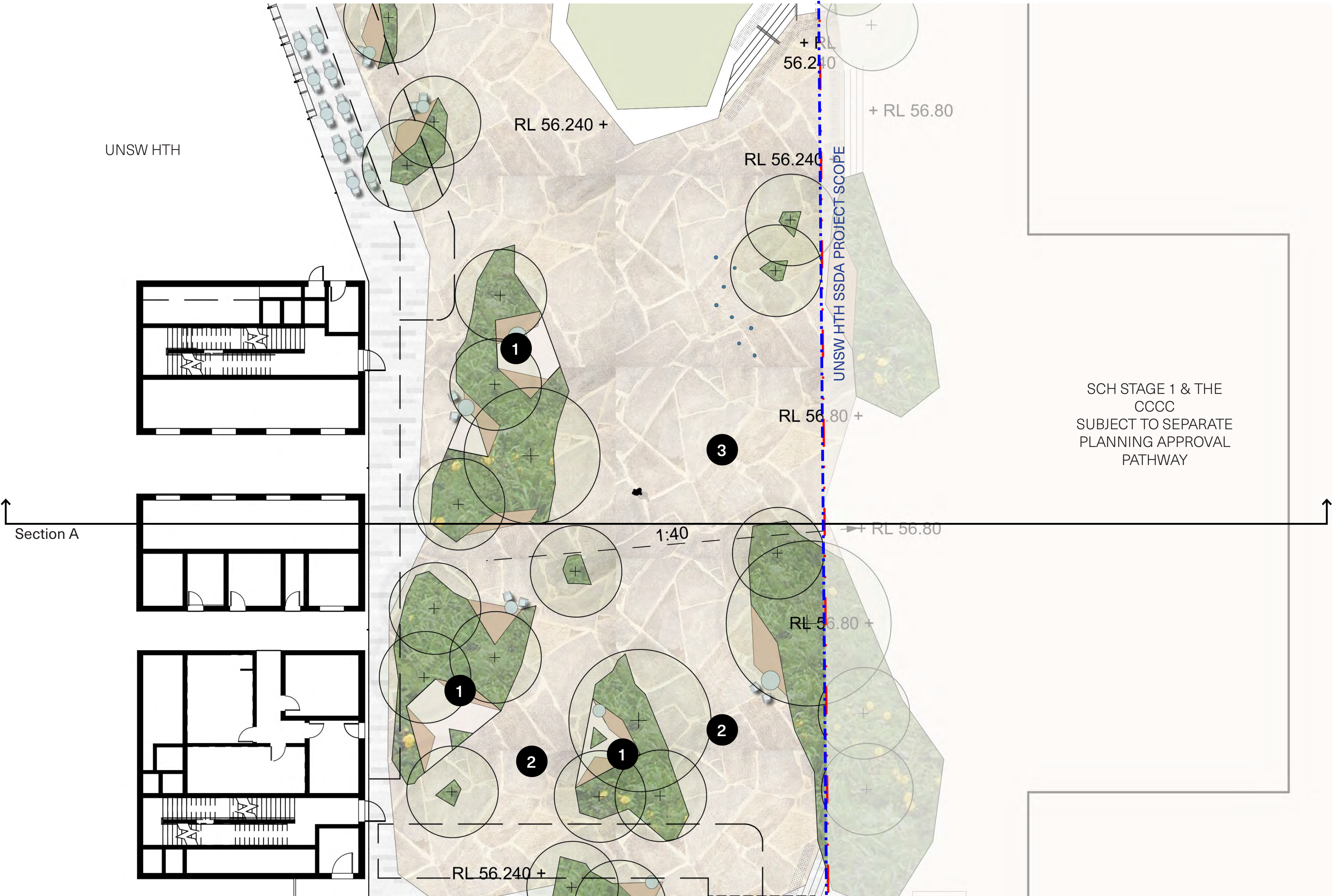


- 1/ Open plaza space for flexible uses with feature paving
- 2/ External F&B space with fixed and loose furniture
- 3/ Intimate dwell spaces amongst lush planting
- 4/ Assessible 1:40 grade ensuring compliant connection into Sydney Childrens' Hospital





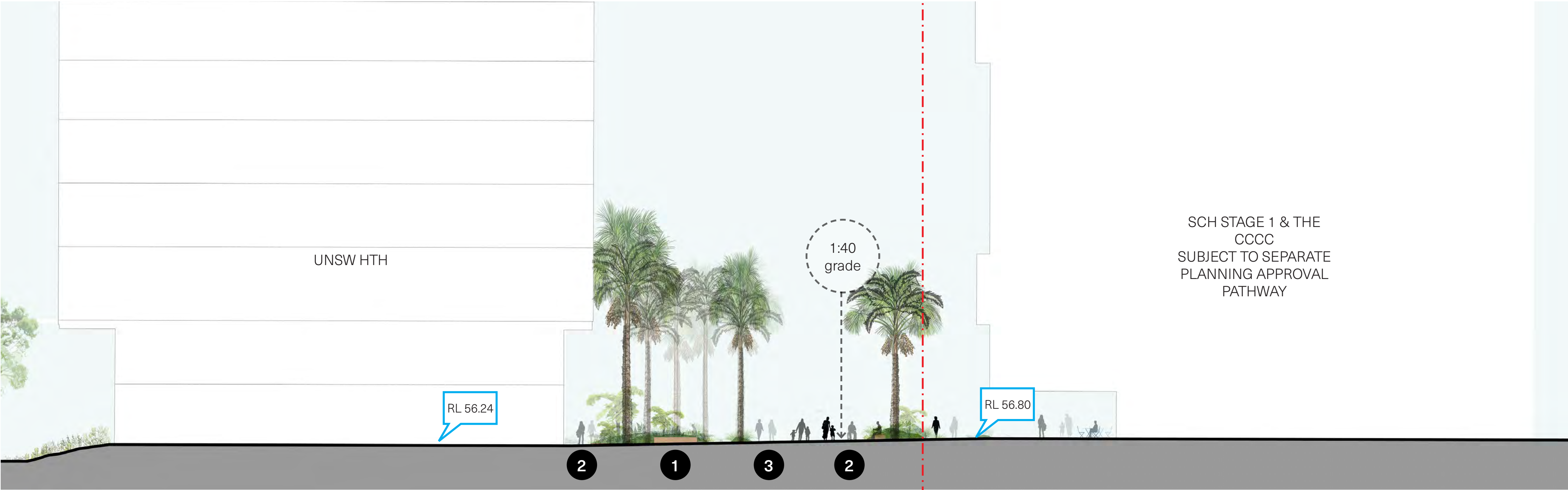
- 1/ Central Space
- 2/ F&B Space
- 3/ Intimate dwelling spaces amongst dense rainforest planting



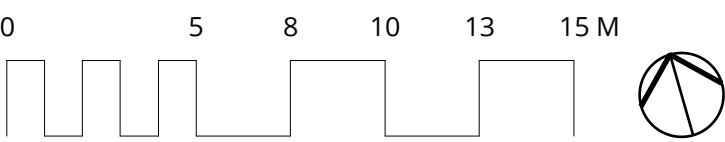
- 1/ Intimate dwelling spaces with fixed seating surrounded by lush planting appropriate for the microclimate
 - 2/ Open, paved paths allowing for clear pedestrian wayfinding and movement between the buildings
 - 3/ Assessible 1:40 grade ensuring compliant connection into SCH Stage 1 & the CCCC
- The southern gully space is comprised of intimate dwelling spaces amongst dense rainforest planting to establish a cool, shaded space for rest. This space also acts as an outdoor extension of the UNSW HTH seminar space and can be used for various events.

Indicative Precedents





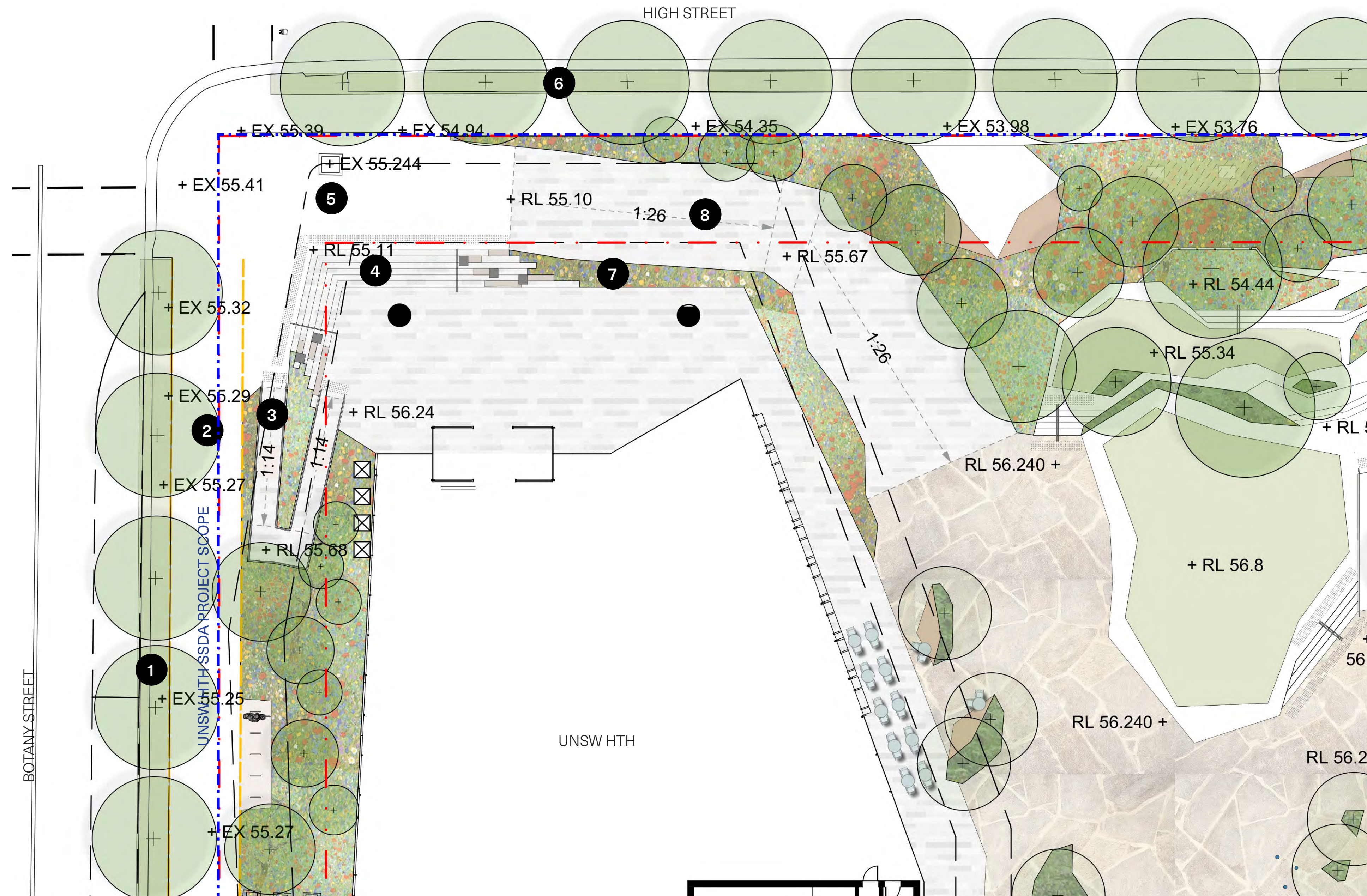
- 1/ Intimate dwelling spaces with fixed seating surrounded by lush planting appropriate for the microclimate
- 2/ Open, paved paths allowing for clear pedestrian wayfinding and movement between the buildings
- 3/ Assessible 1:40 grade ensuring compliant connection into SCH Stage 1 & the CCCC





- 1/ Central Space
- 2/ Open, paved paths allowing for clear pedestrian wayfinding and movement between the buildings
- 3/ Intimate dwelling spaces amongst dense rainforest planting

High Street Entry - Landscape Plan



Legend

- 1/ Proposed street trees to reflect tree palette defined by the IASB development of *Lophostemon confertus*
- 2/ 4m wide shared path to Botany St footpath including 2m wide planted verge
- 3/ 1:14 ramp providing compliant access to building entry
- 4/ Stairs and seating steps to building entry
- 5/ Existing sewer / stormwater infrastructure to be integrated within public realm response
- 6/ Existing street trees to High St to be retained and protected
- 7/ Planted embankment adjacent to building entry
- 8/ 1:26 walkway providing compliant access from streetscape into plaza

The interface between Botany and High Streets is met with equitable access in the form of a staircase which wraps and directs users into the site, alongside 1:14 ramp access into the site.

The landscape planting is comprised of a dense lower understorey of hardy, strappy plants and a tree canopy filtered throughout.

Character Precedents

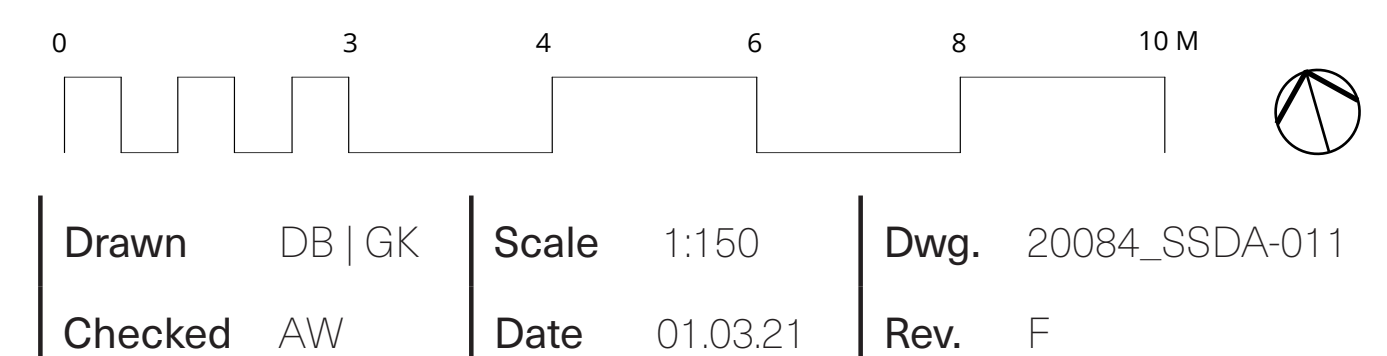


UNSW Health Translation Hub Public Domain
State Significant Development Application | DRAFT



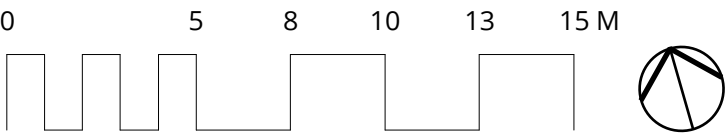
ASPECT Studios™

Client	UNSW
Architect	Architectus





- 1/ 4m wide shared path to Botany St footpath including 2m wide planted verge
- 2/ 1:14 ramp providing compliant access to building entry
- 3/ Stairs and seating steps to building entry
- 4/ Existing street trees to High St to be retained and protected
- 5/ Planted embankment adjacent to building entry





- 1/ 4m wide shared path to Botany St footpath including 2m wide planted verge
- 2/ 1:14 ramp providing compliant access to building entry
- 3/ Stairs and seating steps to building entry
- 4/ Existing street trees to High St to be retained and protected
- 5/ Planted embankment adjacent to building entry
- 6/ 1:21 walkway providing compliant access from streetscape into plaza

Botany Street Interface - Landscape Plan



Character Precedents



Legend

- 1/ 4m wide shared path with 2m wide planted verge to reflect streetscape conditions adjacent to IASB
- 2/ Landscape embankment with a series of endemic and native plants appropriate to the microclimate

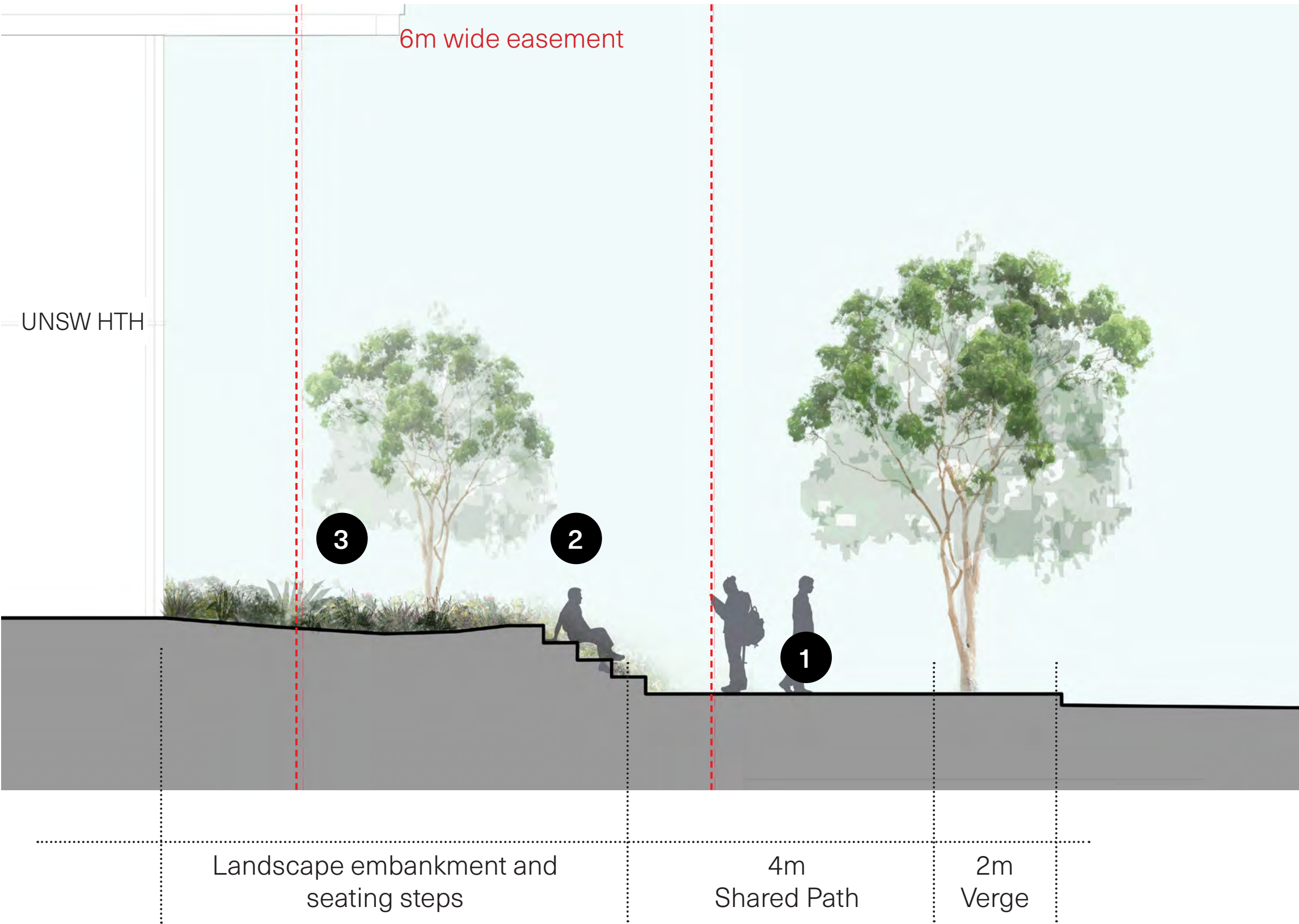
Botany Street encompasses a large landscape embankment, 4m wide Shared Path and public seating.

The landscape planting is comprised of a dense lower understorey of hardy, strappy plants and a tree canopy filtered throughout.

Botany Street Interface - Section AA 1:200



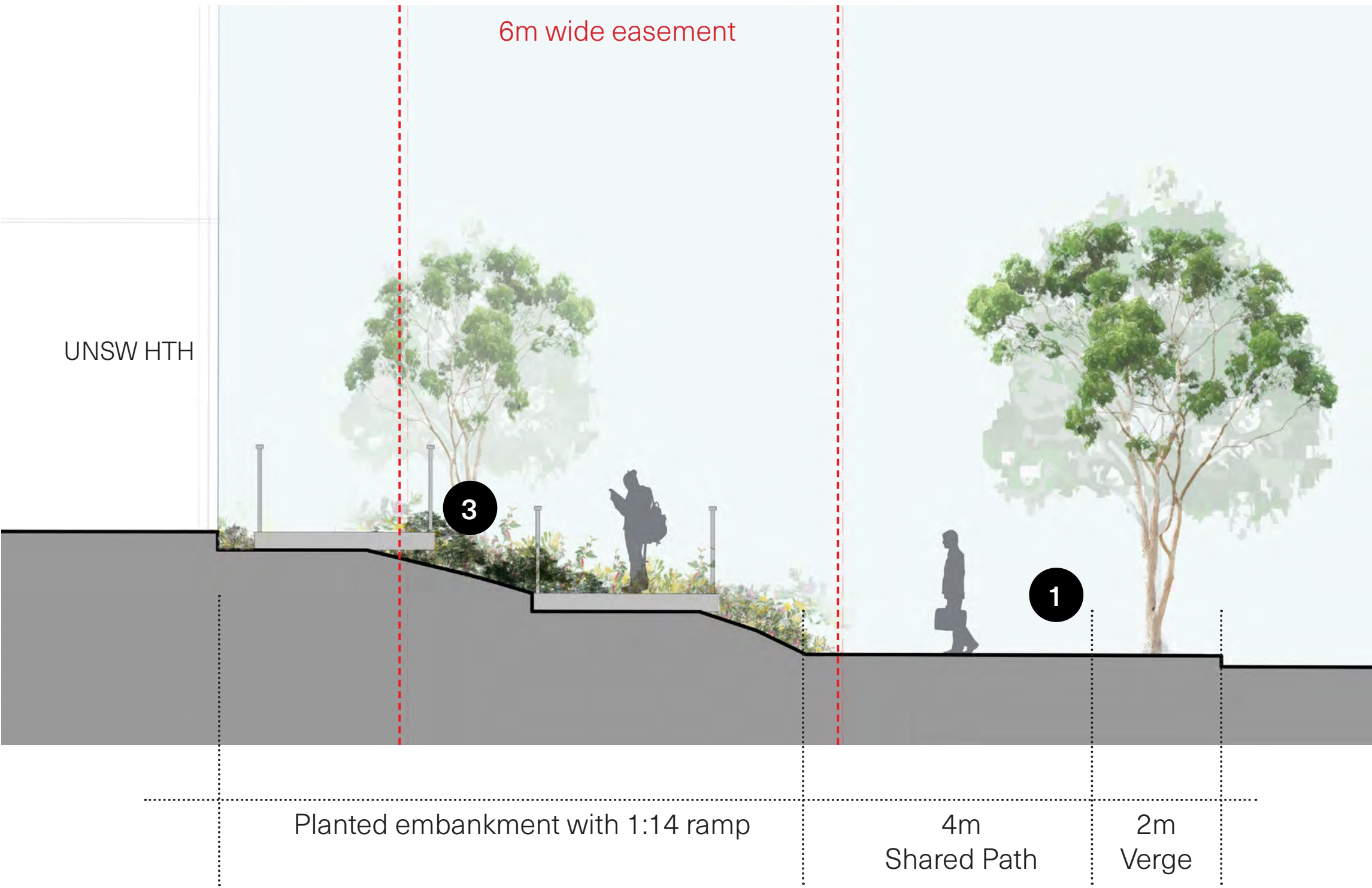
Section BB 1:200

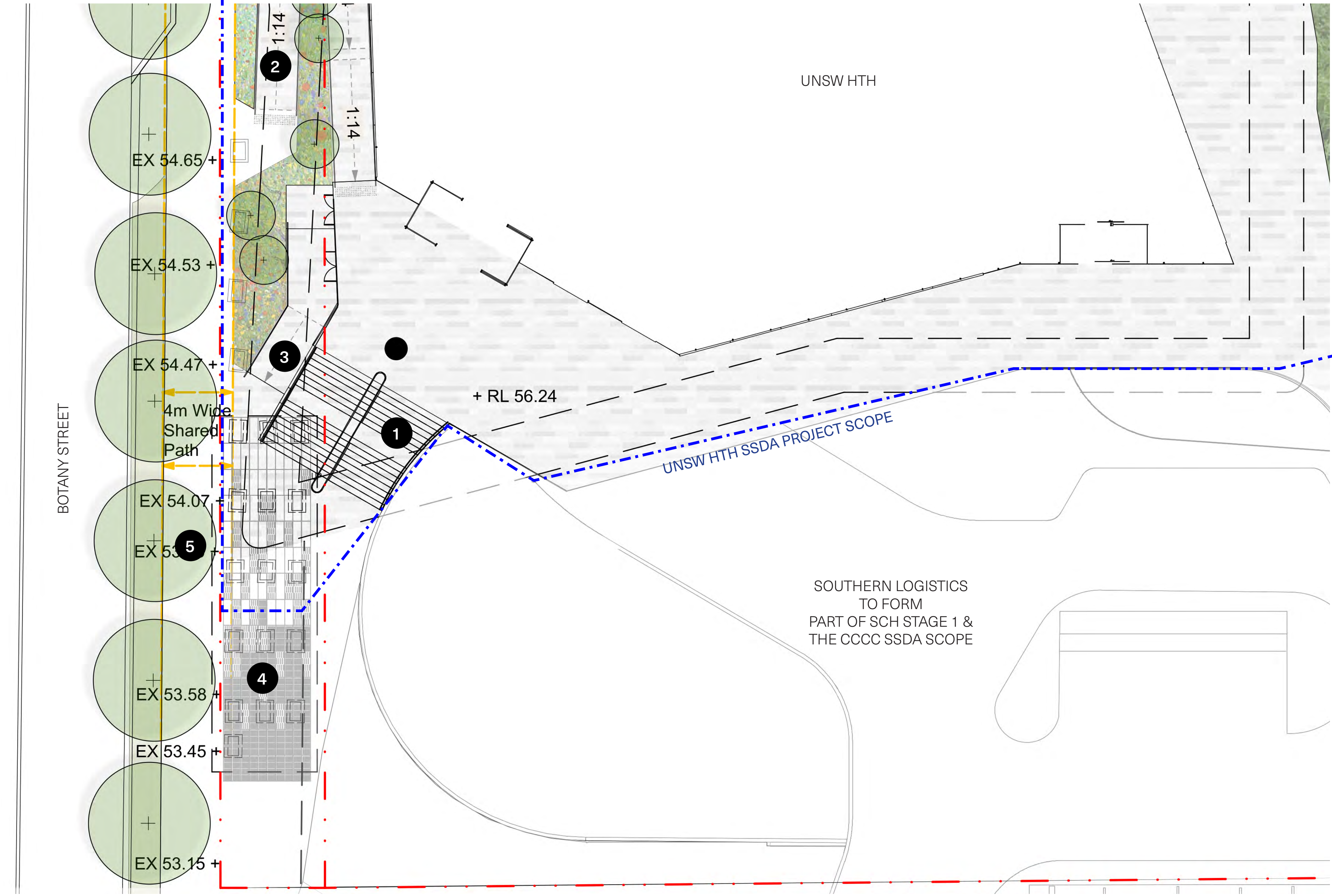


Legend

- 1/ 4m wide shared path with 2m wide planted verge to reflect streetscape conditions adjacent to IASB
- 2/ Public seating steps integrated amongst planting
- 3/ Landscape embankment with a series of endemic and native plants appropriate to the microclimate

Section CC 1:200





Legend

- 1/ Stairs from Gate 11 / Botany St into building entry
- 2/ 1:14 compliant ramp providing DDA access from streetscape into the building
- 3/ Ramp entry to B1 end of trip facilities
- 4/ Surface treatment designed to accomodate existing stormwater infrastructure including slotted and suspended pavers and grated drains
- 5/ 4m wide shared path to Botany St footpath including 2m wide planted verge

The building entry from Gate 11 is the link between the UNSW HTH building and Central Space. Users approaching the site from UNSW Gate 11, and from Botany Street can access the site via staircase or ramp for equitable access.

Amongst this lies entry to the EoT facilities which provides over 100 bicycle storage spaces.

These facilities are embedded within the Botany Street Landscape embankment which softens the hardscapes.

Character Precedents

