

**Museums Discovery Centre**

# **Tree Replacement Strategy- Addendum**

SSD-10472



# CONTENTS

1	INTRODUCTION .....	3
2	SUBMISSIONS.....	3
3	ASSESSMENT OF POTENTIAL LOCATIONS .....	3
4	REPLACEMENT TREES.....	14
5	IMPLEMENTATION .....	15

# 1 INTRODUCTION

This Addendum Tree Replacement Strategy has been prepared in response to feedback received following the exhibition of the Museums Discovery Centre State Significant Development Application (SSDA). The Addendum Strategy affirms commitments by the Applicant in regard to tree replacement and provides clarification in response to feedback received.

## 2 SUBMISSIONS

A number of the submissions received following the exhibition of the SSDA raise tree replacement as an issue. Concerns raised include:

- Exploration of alternatives to avoid the need for tree loss;
- Revising the Tree Replacement Strategy to account for increased size of replacement planting;
- Revising the Tree Replacement Strategy to account for increased management regimes;
- Ensuring certainty that off-site planting will be undertaken; and
- Potential location for off-site planting of replacement trees.

This Addendum Strategy provides clarification on these issues and confirms the pathway to implementation of the Strategy.

## 3 ASSESSMENT OF POTENTIAL LOCATIONS

The Hills Shire Council has nominated potential locations for off-site planting of replacement trees. A total of 674 trees will be planted under this Strategy in accordance with the Applicant's commitment to replace 2 trees for every 1 tree removed from the site.

The Applicant has undertaken an assessment of the nominated locations by Council to determine suitability for replacement planting. Overall it has been assessed that 2,071 trees could be accommodated within the sites nominated by Council, which is well in excess of the 674 trees required.

The assessment of potential tree plantings within each site is based on 23sqm of space being required for each tree. This figure will be dependent on species selection and the desires of Council in terms of the future landscape character desired (e.g. natural bushland or street tree or formal planting).

An assessment of potential replacement planting at the Council nominated locations is as follows:

### 3.1 William Harvey Reserve, Rouse Hill



Owner	The Hills Shire Council
Zoning	RE1- public recreation
Potential replanting areas	5,785 square metres
Potential number of trees	252
Opportunities	<ul style="list-style-type: none"> <li>• Enhancing the biodiversity of the reserve.</li> <li>• Further the work of the local bush care group.</li> </ul>

### **3.1.1 Plan of Management**

A Flora/Fauna Assessment and Plan of Management was prepared by Eco-Rehab Consulting in October 2000. This plan assesses the status of the flora and fauna within the reserve at the time. It is noted that within the 20 years since this report was prepared the flora and fauna within the reserve has changed markedly (as demonstrated within the recent flora and fauna survey at 3.1.2 below). It is understood that Council is reviewing this plan of management as part of their 2021/22 program.

This plan of management makes a number of recommendations regarding the rehabilitation and preservation of flora and fauna within the reserve. It is noted that these recommendations are now outdated as the flora within the reserve and bush care works has significantly altered the landscape since this report was published. The proposed areas for tree replacement remain consistent with this plan of management, however further consultation with Council will be required regarding recommendations of the updated plan of management that will soon be developed.

### **3.1.2 Flora and Fauna Study**

Council commissioned UBM Ecological Consultants to prepare a flora and fauna survey for William Harvey Reserve in Mat 2020. The survey principally investigates the condition of the existing flora and fauna within the reserve and makes recommendations as to the ongoing management of existing vegetation and habitat. The survey does not provide any specific recommendations regarding the locations of future planting, however it does recommend that selective planting be continued to retain and rehabilitate native bushland.



### 3.2 MacKillop Drive Reserve, Baulkham Hills



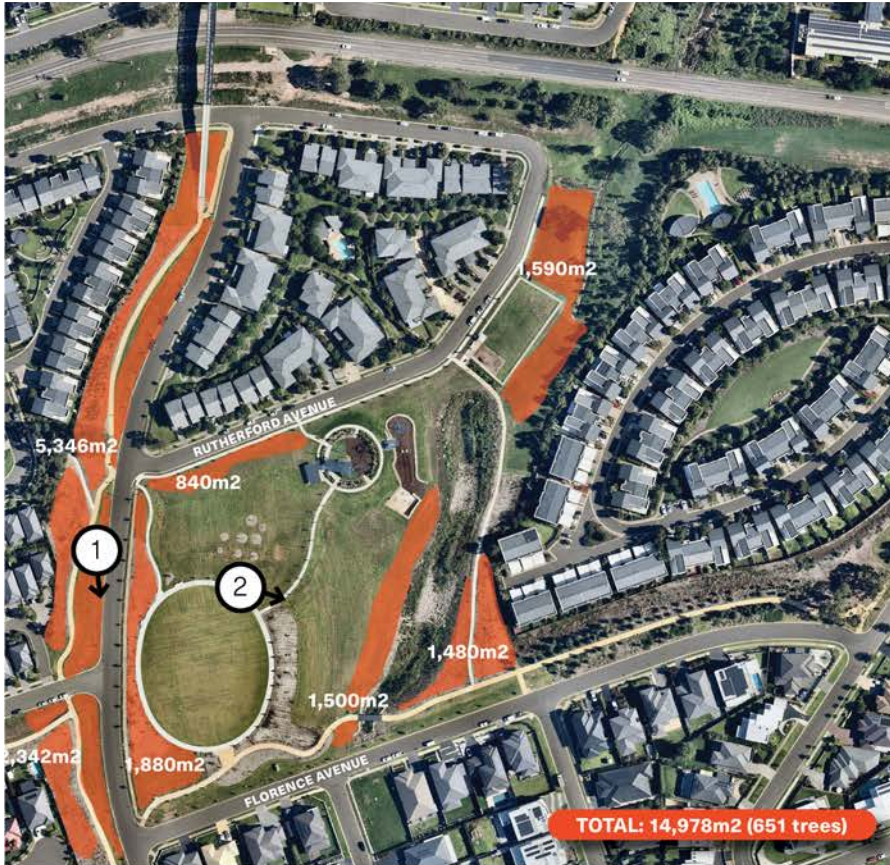
MacKillop Drive Reserve is characterised by informal parkland between MacKillop Drive and Delaney Drive. There is an informal sports field located between Coolock Crescent and the creek line.

Opportunities exist for increased planting within both the informal parkland and surrounding the informal sports field.

Owner	The Hills Shire Council
Zoning	RE1- public recreation
Potential replanting area	8,675 square metres
Potential number of trees	377
Opportunities	<ul style="list-style-type: none"> <li>• Increased canopy cover within informal parkland.</li> <li>• Increased canopy cover and shade surrounding sports field for spectators.</li> <li>• Boundary planting along to the fence line to increase shade and privacy to adjoining residential properties.</li> </ul>



### 3.3 Rutherford Avenue Reserve, Kellyville





Rutherford Avenue Reserve is a recently completed open space surrounded by new housing developments. Whilst planting has been undertaken as part of the redevelopment it is considered that there exists opportunity to increase canopy cover within and surrounding the reserve.

Owner	The Hills Shire Council
Zoning	RE1- public recreation
Potential replanting areas	14,978 square metres
Potential number of trees	651
Opportunities	<ul style="list-style-type: none"> <li>• Provision of further shade within the open space.</li> <li>• Increased street tree planting.</li> <li>• Improve density of existing new tree planting.</li> <li>• Habitat areas along creek corridor restoration</li> </ul>

### 3.4 Arnold Avenue Sports Complex Reserve, Kellyville



The Arnold Avenue Sports Reserve includes formalised playing fields and recently developed sports infrastructure including an amenities complex. Significant landscaping works have been completed, however it is considered there exist further opportunity to increase canopy cover.

Owner	The Hills Shire Council
Zoning	RE1- public recreation
Potential replanting areas	14,185 square metres
Potential number of trees	617
Opportunities	<ul style="list-style-type: none"> <li>• Increased canopy cover and shade surrounding sports field for spectators.</li> <li>• Improved outlook for surrounding residential housing.</li> </ul>

Section 5 of this Addendum Strategy outlines the process for determining which of these locations will be chosen for the replacement planting.



### 3.5 Centenary of ANZAC Reserve, Castle Hill



The Centenary of ANZAC Reserve is located in close proximity to the Museums Discovery Centre site between Green Road and Harrington Avenue. There exists opportunities to increase tree canopy cover along the Green Road alignment surrounding the sports fields.

Owner	The Hills Shire Council
Zoning	RE1- public recreation
Potential replanting areas	3,996 square metres
Potential number of trees	174
Opportunities	<ul style="list-style-type: none"> <li>• Increased canopy cover and shade surrounding sports field for spectators.</li> <li>• Increased green buffer along the Green Road alignment.</li> <li>• Clearing of weeds and overgrowth along creek corridor for new tree planting.</li> </ul>

## **4 REPLACEMENT TREES**

The following sections confirms the commitments for tree replacement in response to feedback received from Council.

### **4.1 Species**

It is intended that all replacement planting will be endemic species that are suited to the particular location chosen. Final species will be agreed with Council (and/or the landowner) prior to planting.

### **4.2 Pot Sizes**

Council has requested that a minimum of 50% (i.e. 337) trees be of 75 litre pot size. The Applicant can confirm that this will be adopted in the replacement planting strategy. The use of 75L plants will be chosen in consultation with Council.

### **4.3 Maintenance Period**

The Applicant will continue to consult with Council regarding the maintenance period for all replacement trees. The final maintenance period and regime will be agreed with Council based on the location and species chosen.



## 5 IMPLEMENTATION

A final Tree Replacement Implementation Plan will be developed prior to construction of Building J. The Implementation Plan will be developed in consultation with Council and include:

- Final locations for replacement planting, including landscape set-out plans;
- Confirmation of species and pot sizes for each tree;
- The maintenance regime that will apply to each site chosen for replacement planting.

Following consultation with Council, further consultation may be undertaken with local community or user groups. Indigenous groups will also be consulted as part of the Implementation Plan to assist in determining species selection to improve connections to country.

Should agreement not be reached with Council, another possible option currently being considered is a collaboration with Wildlife Operations at Taronga Conservation Society Australia. This involves supplying eucalyptus tube stock suitable for a plantation to supply lead to koalas, at Taronga's Richmond Plantation, in the Hawkesbury LGA.