

Appendix C

Landscape plan

PLANTING

- SITE BOUNDARY
- LEASE BOUNDARY
- R1 - ROOT BARRIER

TREE PROTECTION ZONE (TPZ)
REFER TO ARBORISTS REPORT

TREE TO BE RETAINED
REFER TO ARBORISTS REPORT

STRUCTURAL ROOT ZONE (SRZ)
REFER TO ARBORISTS REPORT

TURF

PROPOSED TREE PLANTING

INDIVIDUAL PLANTING

TREES						
Code	Botanical Name	Common Name	Mature Height x Spread (m)	Container Size	Spacing	QTY
GROUND LEVEL						
HAR pen	<i>Harpullia pendula</i>	Tulipwood	6 x 4m	200L	As Shown	
LEVEL 1						
CAL sal	<i>Callistemon salignus</i>	Willow Bottlebrush	5 x 3m ^	200L	As Shown	
COR cit	<i>Corymbia citriodora 'Scentuous'</i>	Dwarf Lemon Scented Gum	5 x 3m ^	200L	As Shown	
CUP ana	<i>Cupaniopsis anacardioides</i>	Tuckeroo	4 x 3m ^	200L	As Shown	
ELA ret	<i>Elaeocarpus reticulatus</i>	Blueberry Ash	4 x 2m ^	200L	As Shown	
GLO fer	<i>Glochidion ferdinandi</i>	Cheese Tree	4 x 3m ^	200L	As Shown	
MEL sty	<i>Melaleuca styphelioides</i>	Prickly-Leaved Paperbark	6 x 5m ^	200L	As Shown	
TRI lau	<i>Tristanopsis laurina</i>	Water Gum	5 x 3m ^	200L	As Shown	
^ Indicates estimated mature tree height for planting on podium (1.4m soil depth). Tree species would typically grow taller, and outcomes could vary						

SHRUBS							
Key	Code	Botanical Name	Common Name	Mature Height x Spread (m)	Container Size	Density (per m2)	QTY
	ACA lim	<i>Acacia cognata 'Limelight'</i>	Limelight Acacia	1 x 1m	150mm	3/m²	
	COR ref	<i>Correa reflexa 'Bellissimo'</i>	Bellissimo Correa	0.5 x 1m	150mm	3/m²	
	GRE bux	<i>Grevillea buxifolia</i>	Grey Spider Grevillea	1 x 1m	150mm	3/m²	
	GRE ser	<i>Grevillea sericea 'Pink Midget'</i>	Pink Midget Grevillea	0.4 x 0.5m	150mm	3/m²	
	WES mun	<i>Westringia fruticosa 'Mundi'</i>	Westringia Mundi	0.5 x 1.5m	150mm	3/m²	

GRASSES							
Key	Code	Botanical Name	Common Name	Mature Height x Spread (m)	Container Size	Density (per m2)	QTY
	DIA cae	<i>Dianella caerulea 'Little Jess'</i>	Blue Flax Lily	0.6 x 0.5m	Tube	5/m²	
	LOM tan	<i>Lomandra 'Tanika'</i>	Tankia Lomandra	0.5 x 0.6m	Tube	5/m²	
	POA kin	<i>Poa 'Kingsdale'</i>	Kingsdale Poa	0.6 x 0.5m	Tube	5/m²	

GROUNDCOVERS							
Key	Code	Botanical Name	Common Name	Mature Height x Spread (m)	Container Size	Density (per m2)	QTY
	BAN rol	<i>Banksia integrifolia 'Roller Coaster'</i>	Roller Coaster Banksia	0.15 x 3m	150mm	3/m²	
	GOO gol	<i>Goodenia ovata 'Gold Cover'</i>	Gold Cover Goodenia	0.2 x 1.5m	150mm	3/m²	
	GRE bro	<i>Grevillea 'Bronze Rambler'</i>	Grevillea 'Bronze Rambler'	0.3 x 3m	150mm	2/m²	
	GRE tam	<i>Grevillea lanigera 'Mt Tamboritha'</i>	Grevillea 'Mt Tamboritha'	0.3 x 1.5m	150mm	3/m²	
	HAR vio	<i>Hardenbergia violacea 'Carpet Royale'</i>	Carpet Royale Hardenbergia	0.2 x 1.5	150mm	3/m²	
	SCA mau	<i>Scaevola albida 'Mauve Carpet'</i>	Mauve Carpet Fan Flower	0.2m	150mm	3/m²	
	VIO hed	<i>Viola hederacea</i>	Native Violet	0.1 x 0.3m	150mm	8/m²	

PLANT MIXES

PLANT MIX 1 - ENTRANCE								
Key	Code	Botanical Name	Common Name	Mature Height x Spread (m)	Container Size	Percentage	Density (per m2)	QTY
	Shrubs							
	GRE ser	<i>Grevillea sericea</i> 'Pink Midget'	Pink Midget Grevillea	0.4 x 0.5m	150mm	15%	3/m²	
	LEP pin	<i>Leptospermum</i> 'Pink Cascade'	Pink Cascade Tea Tree	0.8 x 1m	150mm	10%	3/m²	
	WES mun	<i>Westringia fruticosa</i> 'Mundi'	Westringia Mundi	0.5 x 1.5m	150mm	10%	3/m²	
	Grasses and Groundcovers							
	BAN rol	<i>Banksia integrifolia</i> 'Roller Coaster'	Roller Coaster Banksia	0.15 x 3m	150mm	15%	3/m²	
	DIA cae	<i>Dianella caerulea</i> 'Little Jess'	Blue Flax Lily	0.6 x 0.5m	Tube	25%	5/m²	
	LOM cyl	<i>Lomandra cylindrica</i> 'Lime Wave'	Lime Wave Mat-Rush	0.4 x 0.5m	Tube	25%	5/m²	

PLANT MIX 2 - EDGE								
Code	Code	Botanical Name	Common Name	Mature Height x Spread (m)	Container Size	Percentage	Density (per m2)	QTY
	Grasses							
	DIA cae	<i>Dianella caerulea 'Little Jess'</i>	Blue Flax Lily	0.6 x 0.5m	Tube	10%	5/m²	
	IMP cyl	<i>Imperata cylindrica 'Yalba'</i>	Blady Grass	1 x 0.4m	Tube	20%	5/m²	
	THE aus	<i>Themeda australis</i>	Kangaroo Grass	0.7 x 0.5m	Tube	15%	5/m²	
	Groundcovers + Climbers							
	GRE tam	<i>Grevillea lanigera 'Mt Tamboritha'</i>	Grevillea 'Mt Tamboritha'	0.3 x 1.5m	TBC	15%	3/m²	
	HAR vio	<i>Hardenbergia violacea</i>	Purple Coral Pea	0.2 x 1m	TBC	20%	3/m²	
	BAN rol	<i>Banksia integrifolia 'Roller Coaster'</i>	Roller Coaster Banksia	0.15 x 3m	150mm	20%	3/m²	

PLANT MIX 3 - EDGE								
Key	Code	Botanical Name	Common Name	Mature Height x Spread (m)	Container Size	Percentage	Density (per m2)	QTY
	Grasses							
	LOM lon	<i>Lomandra longifolia</i>	Spiny Head Mat-Rush	1 x 1m	Tube	15%	4/m²	
	LOM cyl	<i>Lomandra cylindrica</i> 'Lime Wave'	Lime Wave Mat-Rush	0.4 x 0.5m	Tube	15%	5/m²	
	POA kin	<i>Poa</i> 'Kingsdale'	Kingsdale Poa	0.6 x 0.5m	Tube	15%	5/m²	
	Groundcovers + Climbers							
	GRE bro	<i>Grevillea</i> 'Bronze Rambler'	Grevillea 'Bronze Rambler'	0.3 x 3m	TBC	30%	3/m²	
	SCA mau	<i>Scaevola albida</i> 'Mauve Carpet'	Mauve Carpet Fan Flower	0.2m	150mm	25%	3/m²	

PLANT MIX 4 - CENTRAL								
Key	Code	Botanical Name	Common Name	Mature Height x Spread (m)	Container Size	Percentage	Density (per m2)	QTY
	Shrubs							
	GRE ser	<i>Grevillea sericea</i>	Silky Grevillea	1 x 1m	150mm	30%	2/m²	
	LEP pin	<i>Leptospermum 'Pink Cascade'</i>	Pink Cascade Tea Tree	0.8 x 1m	150mm	25%	3/m²	
	OZO dio	<i>Ozothamnus diosmifolius 'Radiance'</i>	Rice Flower	1 x 1m	150mm	20%	3/m²	
	Grasses							
	LOM lon	<i>Lomandra longifolia</i>	Spiny Head Mat-Rush	1 x 1m	Tube	15%	4/m²	
	THE aus	<i>Themeda australis</i>	Kangaroo Grass	0.7 x 0.5m	Tube	10%	5/m²	

PLANT MIX 5 - CENTRAL								
Key	Code	Botanical Name	Common Name	Mature Height x Spread (m)	Container Size	Percentage	Density (per m2)	QTY
	Shrubs							
	GRE bux	Grevillea buxifolia	Grey Spider Grevillea	1 x 1m	150mm	30%	3/m²	
	PHI pro	Philotheca myoporoides 'Profusion'	Wax Flower	1 x 1m	150mm	20%	3/m²	
	WES mun	Westringia fruticosa 'Mundi'	Westringia Mundi	0.5 x 1.5m	150mm	15%	3/m²	
	Grasses							
	DIA cae	Dianella caerulea 'Little Jess'	Blue Flax Lily	0.6 x 0.5m	Tube	15%	5/m²	
	LOM cyl	Lomandra cylindrica 'Lime Wave'	Lime Wave Mat-Rush	0.4 x 0.5m	Tube	20%	5/m²	

PLANT MIX 6 - GRASSES								
Key	Code	Botanical Name	Common Name	Mature Height x Spread (m)	Container Size	Percentage	Density (per m2)	QTY
	Grasses							
	DIA cae	<i>Dianella caerulea 'Little Jess'</i>	Blue Flax Lily	0.6 x 0.5m	Tube	30%	5/m²	
	LOM cyl	<i>Lomandra cylindrica 'Lime Wave'</i>	Lime Wave Mat-Rush	0.4 x 0.5m	Tube	30%	5/m²	
	IMP cyl	<i>Imperata cylindrica 'Yalba'</i>	Blady Grass	1 x 0.4m	Tube	20%	5/m²	
	POA kin	<i>Poa 'Kingsdale'</i>	Kingsdale Poa	0.6 x 0.5m	Tube	20%	5/m²	

NOTES

- Shrub planting to planted in groups of 3, 5 and 8 of the same species
- All species installed must be as per the above schedule. Any variations from this schedule must be approved in writing prior to installation.
- Should incorrect species be installed without approval, the contractor will be responsible for replacement.

FINAL PLANT QUANTITIES TO BE COORDINATED FOR 100%

NOTES

THE CONTRACTOR MUST VERIFY IN FIELD (VIF) ALL DIMENSIONS AND CONDITIONS SHOWN ON THIS DRAWING PRIOR TO CONSTRUCTION.

SAFETY IN DESIGN INFORMATION

SAFETY IN DESIGN ISSUES HAVE BEEN ASSESSED AS PART OF THE DESIGN PROCESS. ALL REASONABLE STEPS HAVE BEEN TAKEN TO ENSURE HAZARDS AND RISKS NORMALLY ASSOCIATED WITH THIS TYPE OF DESIGN HAVE BEEN MITIGATED AND/OR COMMUNICATED. RESIDUAL HAZARDS AND RISKS AND/OR HAZARDS AND RISKS NOT NORMALLY ASSOCIATED WITH THIS TYPE OF WORK WHICH MAY REQUIRE SUBSEQUENT CONSIDERATION AND/OR ACTION ARE DESCRIBED IN -

ATHENA SID Register

Key Plan:

Project Status:

80% DESIGN DEVELOPMENT

Project No.:

60628128

B	23-OCT-2020	80% DESIGN DEVELOPMENT ISSUE	CL			JB	DP
A	16-OCT-2020	80% DESIGN DEVELOPMENT ISSUE	CL			JB	DP
REV.	DATE	DESCRIPTION	DRWN	ENGR	CHK	APP'D	

ARCHITECT:

AECOM

CIVIL/STRUCTURAL ENGINEER:

AECOM

MEP ENGINEER:

AECOM

AGILE No.:

PROJECT:

ATHENA

TITLE:

LANDSCAPE LEGEND AND PLANT SCHEDULE

SCALE:

1 : 100

DRAWING NO.:

ATHENA-ACM-XX-XX-DR-B-8000

REV.:

B

NOTES

THE CONTRACTOR MUST VERIFY IN FIELD (VIF) ALL DIMENSIONS AND CONDITIONS SHOWN ON THIS DRAWING PRIOR TO CONSTRUCTION.

SAFETY IN DESIGN INFORMATION

SAFETY IN DESIGN ISSUES HAVE BEEN ASSESSED AS PART OF THE DESIGN PROCESS. ALL REASONABLE STEPS HAVE BEEN TAKEN TO ENSURE HAZARDS AND RISKS NORMALLY ASSOCIATED WITH THIS TYPE OF DESIGN HAVE BEEN MITIGATED AND/OR COMMUNICATED. RESIDUAL HAZARDS AND RISKS AND/OR HAZARDS AND RISKS NOT NORMALLY ASSOCIATED WITH THIS TYPE OF WORK WHICH MAY REQUIRE SUBSEQUENT CONSIDERATION AND/OR ACTION ARE DESCRIBED IN -

ATHENA SID Register

Key Plan:

Project Status:

Project Status:	80% DESIGN DEVELOPMENT
-----------------	------------------------

Project No.: 60628128

Project No.:	60628128
--------------	----------

B	23-OCT-2020	80% DESIGN DEVELOPMENT ISSUE	CL		JB	DP
A	16-OCT-2020	80% DESIGN DEVELOPMENT ISSUE	CL		JB	DP
REV.	DATE	DESCRIPTION	DRWN	ENGR	CHK	APP'D

ARCHITECT:



CIVIL/STRUCTURAL ENGINEER:

AECOM

MEP ENGINEER:



AGILE No.:

PROJECT: _____

PROJECT:	ATHENA
----------	--------

TITLE: LANDSCAPE PLAN - GROUND FLOOR

TITLE: LANDSCAPE PLAN - GROUND FLOOR

SCALE:	DRAWING NO.:	REV.:
--------	--------------	-------

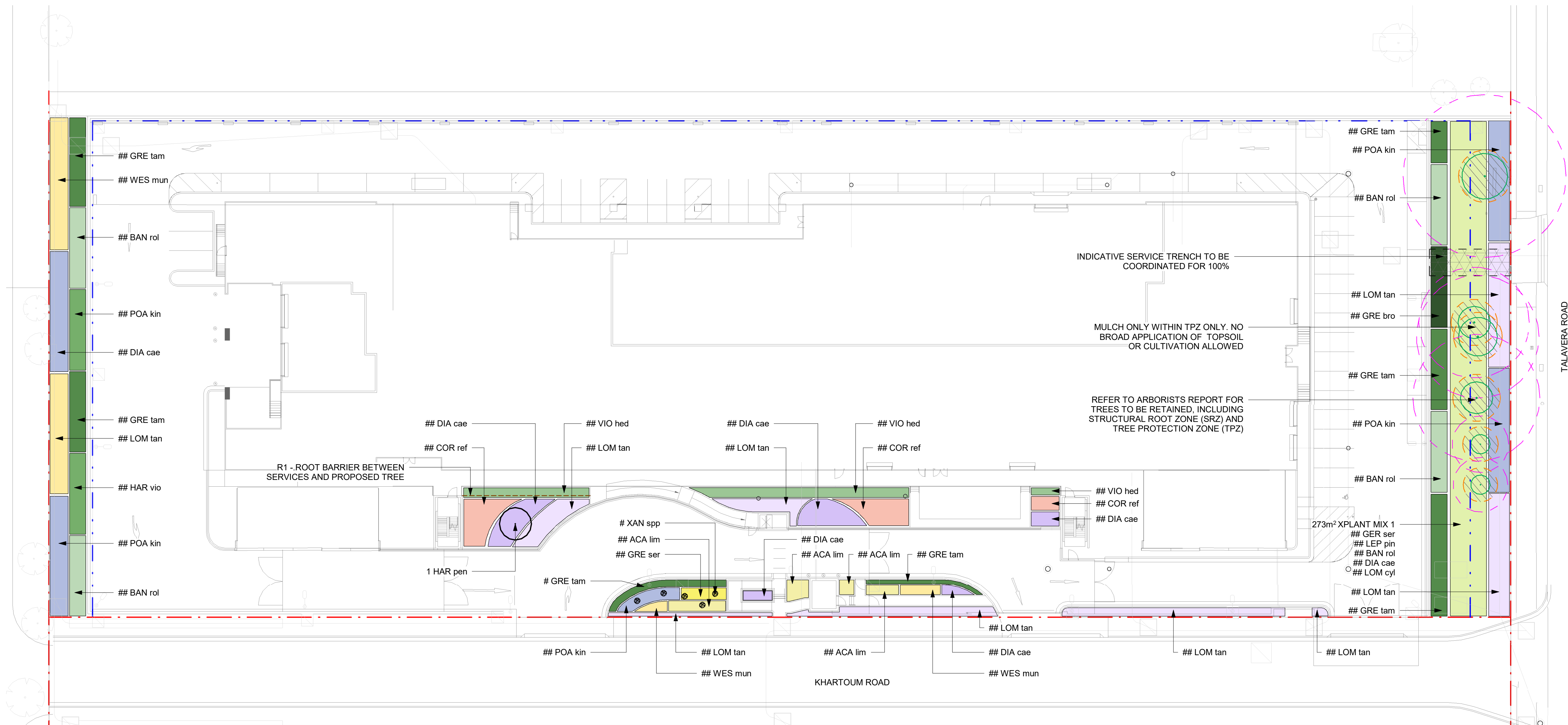
1 : 300	ATHENA-ACM-XX-XX-DR-B-8001	B
---------	----------------------------	---

SCALE:	DRAWING NO.:	REV.:
--------	--------------	-------

1 : 300	ATHENA-ACM-XX-XX-DR-B-8001	B
---------	----------------------------	---

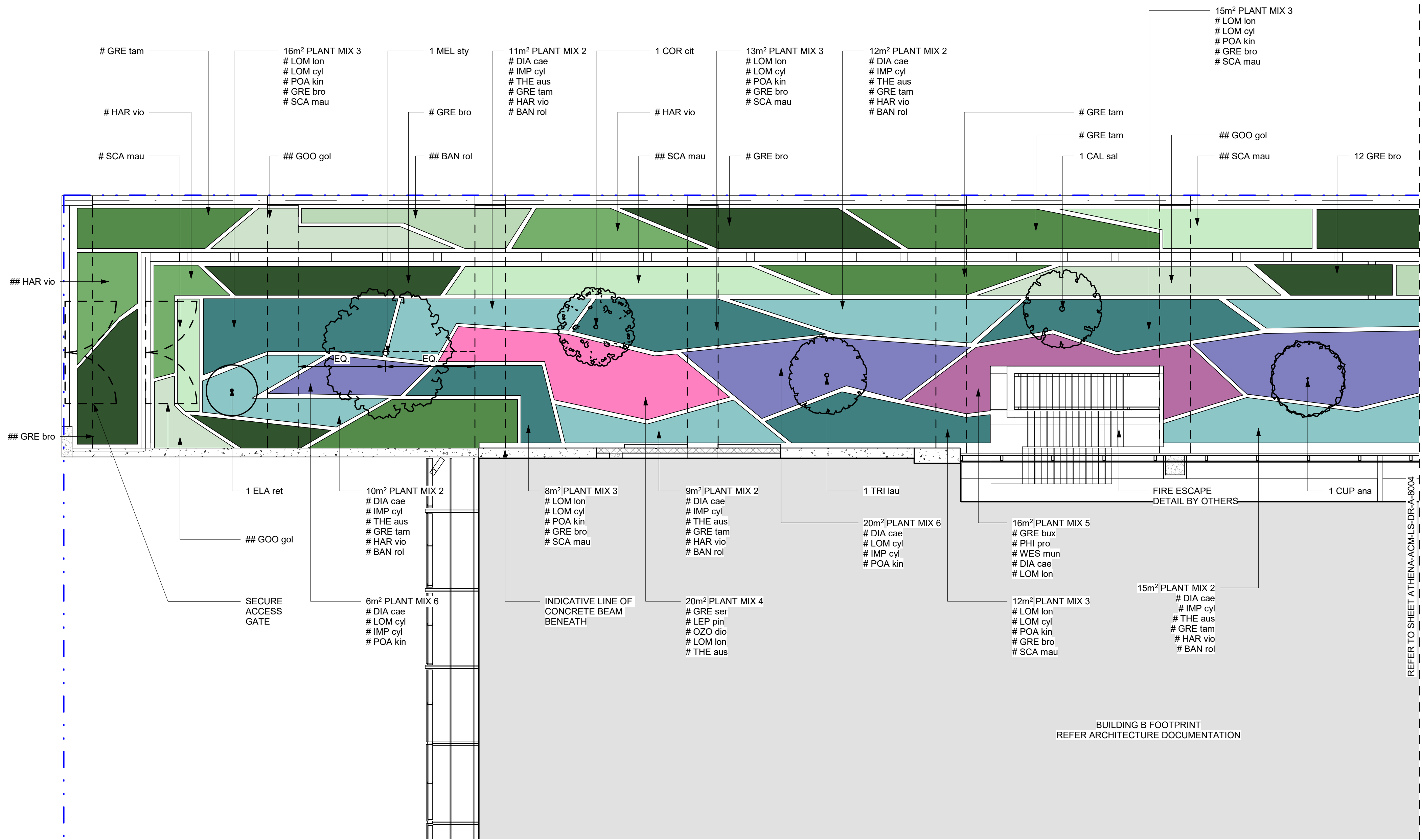
SCALE:	DRAWING NO.:	REV.:
--------	--------------	-------

1 : 300	ATHENA-ACM-XX-XX-DR-B-8001	B
---------	----------------------------	---



1 GROUND FLOOR

scale1 : 300



EDGE PLANTING
- PLANT MIX 2 & 3

CENTRAL PLANTING
- PLANT MIX 4 & 5

GRASSES
- PLANT MIX 6

NOTES

THE CONTRACTOR MUST VERIFY IN FIELD (VIF) ALL DIMENSIONS AND CONDITIONS SHOWN ON THIS DRAWING PRIOR TO CONSTRUCTION.

SAFETY IN DESIGN INFORMATION

SAFETY IN DESIGN ISSUES HAVE BEEN ASSESSED AS PART OF THE DESIGN PROCESS. ALL REASONABLE STEPS HAVE BEEN TAKEN TO ENSURE HAZARDS AND RISKS NORMALLY ASSOCIATED WITH THIS TYPE OF DESIGN HAVE BEEN MITIGATED AND/OR COMMUNICATED. RESIDUAL HAZARDS AND RISKS AND/OR HAZARDS AND RISKS NOT NORMALLY ASSOCIATED WITH THIS TYPE OF WORK WHICH MAY REQUIRE SUBSEQUENT CONSIDERATION AND/OR ACTION ARE DESCRIBED IN -

ATHENA SID Register

Key Plan:

Project Status:

80% DESIGN DEVELOPMENT

Project No.:

60628128

REV.	DATE	DESCRIPTION	DRWN	ENGR	CHK	APP'D
A	23-OCT-2020	80% DESIGN DEVELOPMENT ISSUE	CL		JB	DP
A	16-OCT-2020	80% DESIGN DEVELOPMENT ISSUE	CL		JB	DP

ARCHITECT:

AECOM

CIVIL/STRUCTURAL ENGINEER:

AECOM

MEP ENGINEER:

AECOM

AGILE No.:

PROJECT:

ATHENA

TITLE:

LANDSCAPE PLAN - LEVEL 1 - SHEET 1

SCALE:

1 : 100

DRAWING NO.:

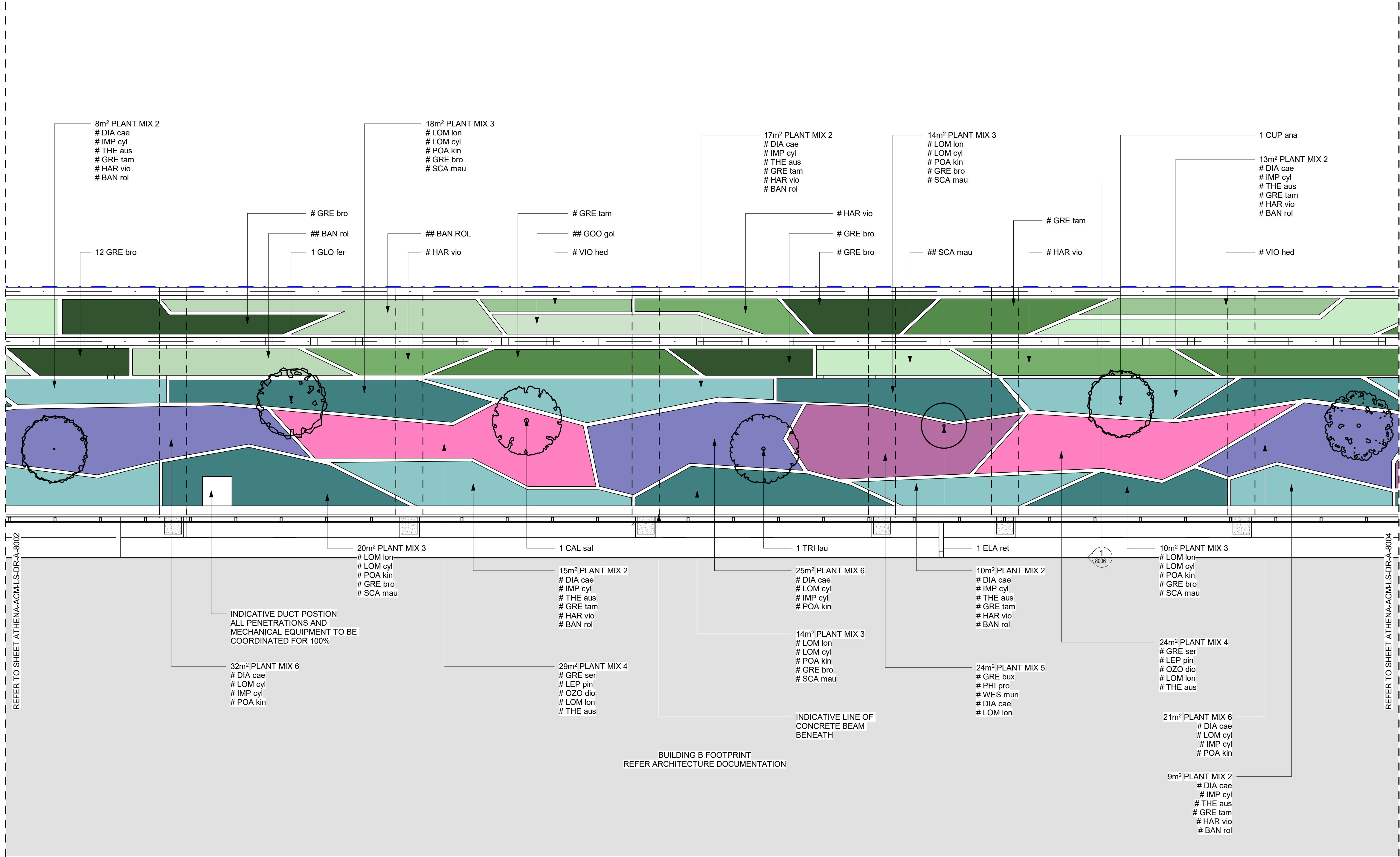
ATHENA-ACM-XX-XX-DR-A-8002

REV.:

A

1 LEVEL 1 - SHEET 1

scale 1 : 100



1 LEVEL 1 - SHEET 2

scale 1 : 100

NOTES

THE CONTRACTOR MUST VERIFY IN FIELD (VIF) ALL DIMENSIONS AND CONDITIONS SHOWN ON THIS DRAWING PRIOR TO CONSTRUCTION.

SAFETY IN DESIGN INFORMATION

SAFETY IN DESIGN ISSUES HAVE BEEN ASSESSED AS PART OF THE DESIGN PROCESS. ALL REASONABLE STEPS HAVE BEEN TAKEN TO ENSURE HAZARDS AND RISKS NORMALLY ASSOCIATED WITH THIS TYPE OF DESIGN HAVE BEEN MITIGATED AND/OR COMMUNICATED. RESIDUAL HAZARDS AND RISKS AND/OR HAZARDS AND RISKS NOT NORMALLY ASSOCIATED WITH THIS TYPE OF WORK WHICH MAY REQUIRE SUBSEQUENT CONSIDERATION AND/OR ACTION ARE DESCRIBED IN -

ATHENA SID Register

Key Plan:

Project Status: 80% DESIGN DEVELOPMENT

Project No.: 60628128

REV.	DATE	DESCRIPTION	DRWN	ENGR	CHK	APP'D
A	23-OCT-2020	80% DESIGN DEVELOPMENT ISSUE	CL		JB	DP
A	16-OCT-2020	80% DESIGN DEVELOPMENT ISSUE	CL		JB	DP

ARCHITECT:

AECOM

CIVIL/STRUCTURAL ENGINEER:

AECOM

MEP ENGINEER:

AECOM

AGILE No.:

PROJECT: ATHENA

TITLE: LANDSCAPE PLAN - LEVEL 1 - SHEET 2

SCALE:
1 : 100

DRAWING NO.:
ATHENA-ACM-XX-XX-DR-A-8003

REV.:
A

NOTES

THE CONTRACTOR MUST VERIFY IN FIELD (VIF) ALL DIMENSIONS AND CONDITIONS SHOWN ON THIS DRAWING PRIOR TO CONSTRUCTION.

SAFETY IN DESIGN INFORMATION

SAFETY IN DESIGN ISSUES HAVE BEEN ASSESSED AS PART OF THE DESIGN PROCESS. ALL REASONABLE STEPS HAVE BEEN TAKEN TO ENSURE HAZARDS AND RISKS NORMALLY ASSOCIATED WITH THIS TYPE OF DESIGN HAVE BEEN MITIGATED AND/OR COMMUNICATED. RESIDUAL HAZARDS AND RISKS AND/OR HAZARDS AND RISKS NOT NORMALLY ASSOCIATED WITH THIS TYPE OF WORK WHICH MAY REQUIRE SUBSEQUENT CONSIDERATION AND/OR ACTION ARE DESCRIBED IN -

ATHENA SID Register

Key Plan:

Project Status:

Project Status:	80% DESIGN DEVELOPMENT
-----------------	------------------------

Project No.: 00000100

Project No.:	60628128
--------------	----------

A	23-OCT-2020	80% DESIGN DEVELOPMENT ISSUE	CL			JB	DP
A	16-OCT-2020	80% DESIGN DEVELOPMENT ISSUE	CL			JB	DP
REV.	DATE	DESCRIPTION	DRWN	ENGR	CHK	APP'D	

ARCHITECT:



CIVIL/STRUCTURAL ENGINEER:



MEP ENGINEER:



AGILE No.:

PROJECT: _____

PROJECT:	ATHENA
----------	--------

TITLE: LANDSCAPE PLAN - LEVEL 1 - SHEET 3

TITLE: LANDSCAPE PLAN - LEVEL 1 - SHEET 3

SCALE:	DRAWING NO.:	REV.:
--------	--------------	-------

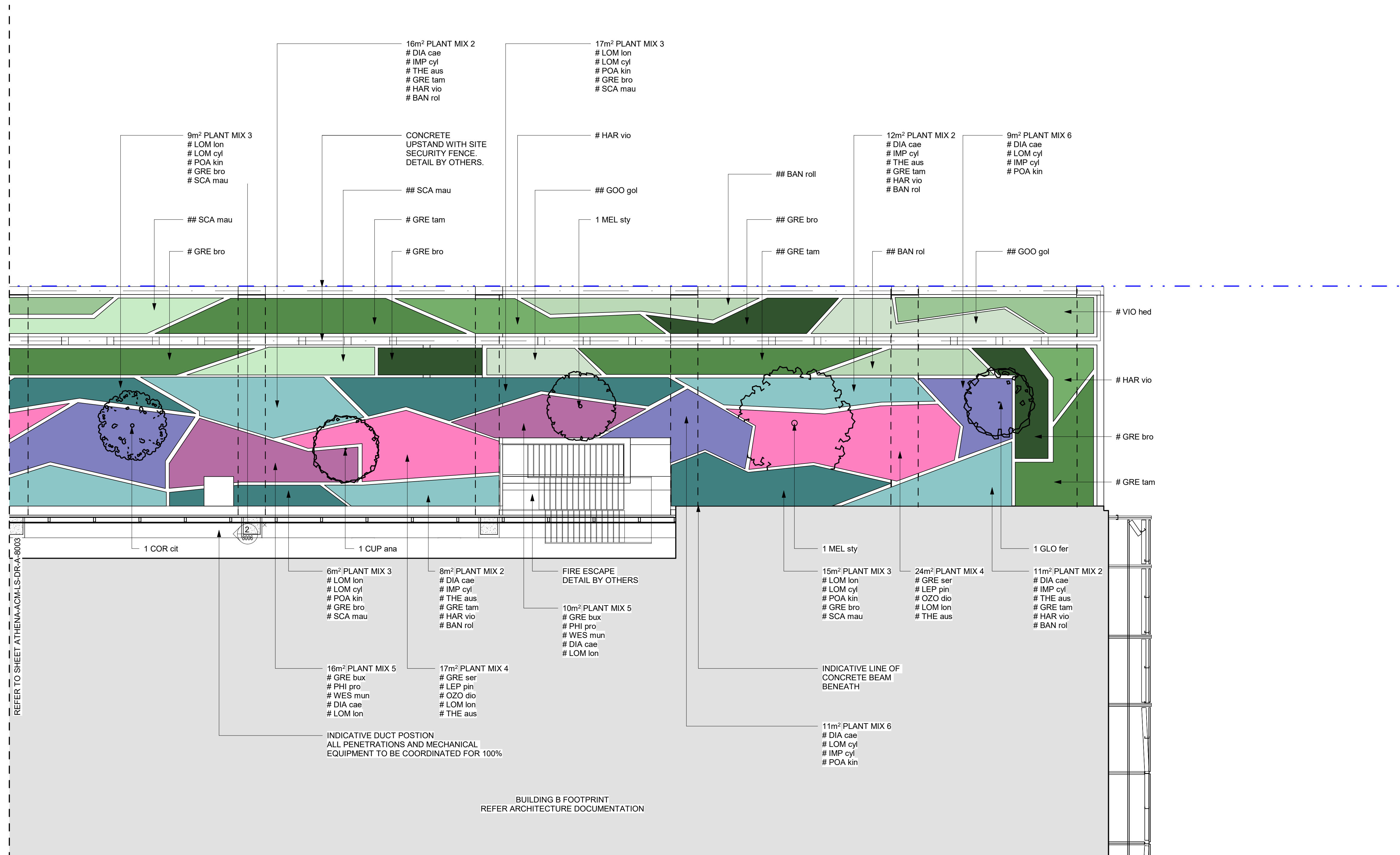
1 : 100	ATHENA-ACM-XX-XX-DR-A-8004	A
---------	----------------------------	---

DRAWING NO.:	REV.:
--------------	-------

ATHENA-ACM-XX-XX-DR-A-8004	A
----------------------------	---

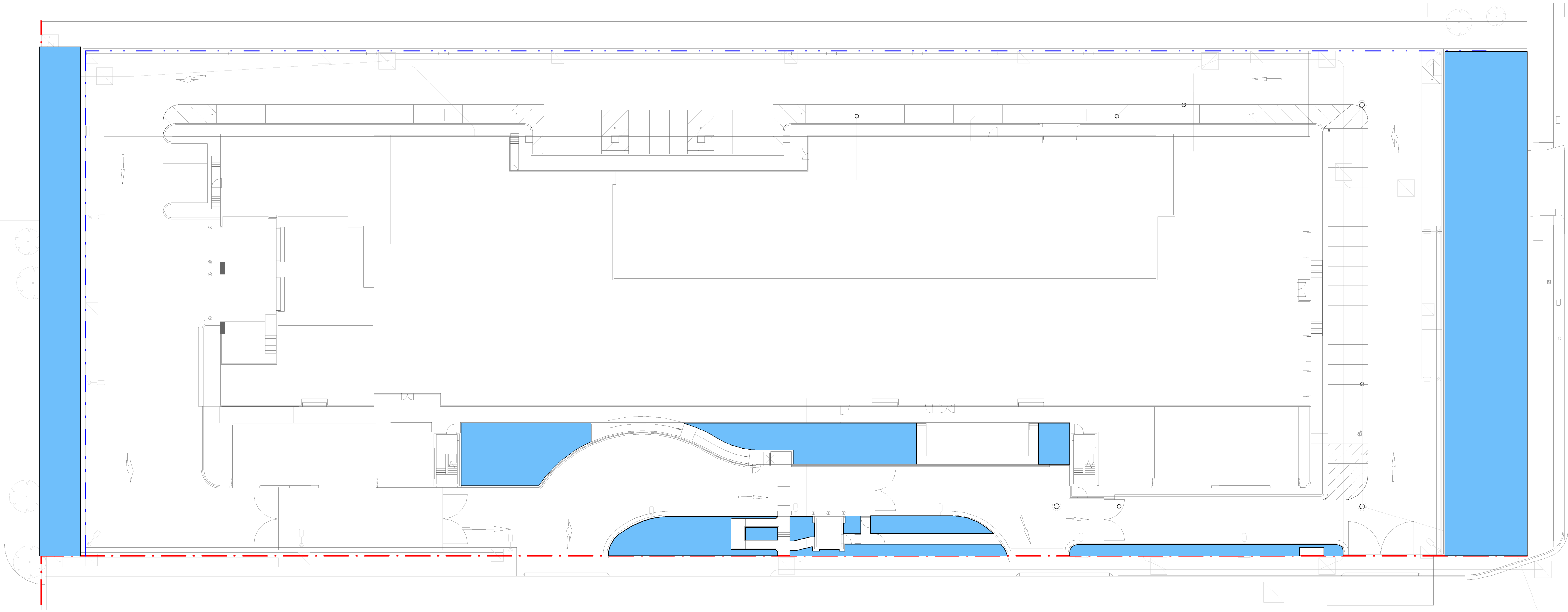
REV.:

A



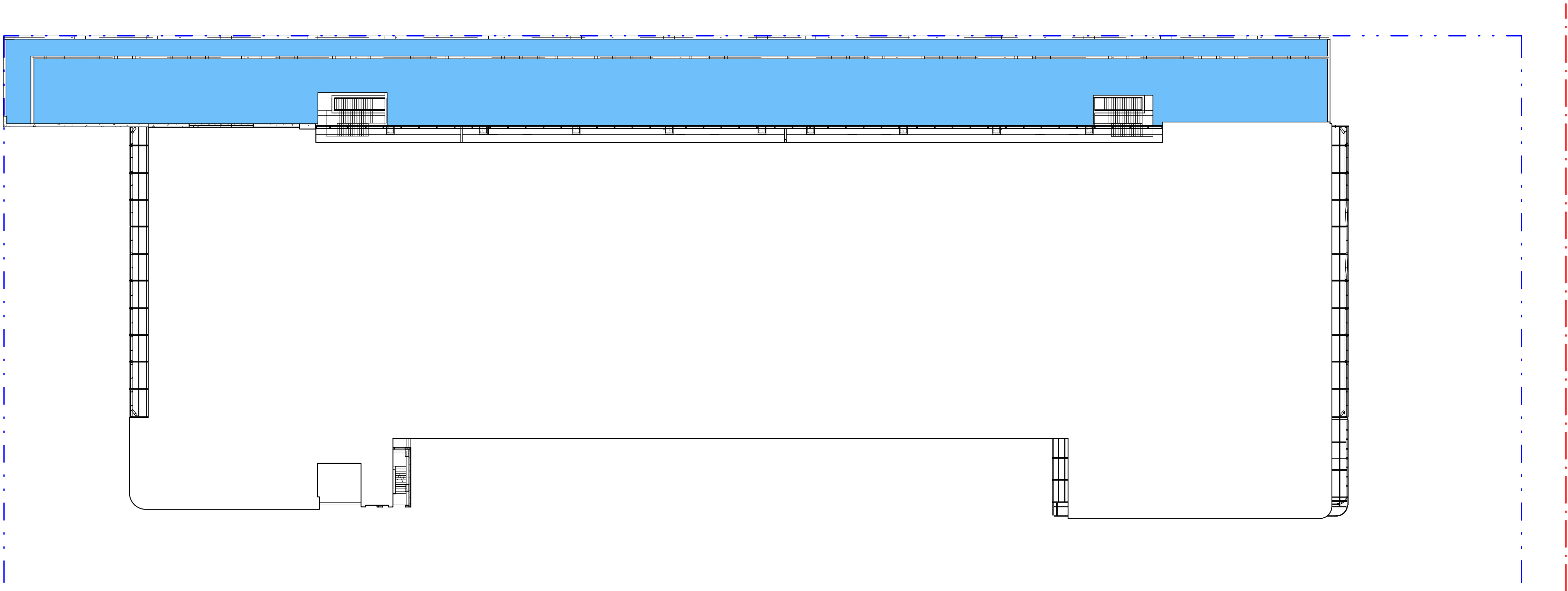
1 LEVEL 1 - SHEET 3

scale 1 : 100



1 IRRIGATION - GROUND FLOOR

scale1 : 300



2 IRRIGATION - LEVEL 1

scale1 : 300

LANDSCAPE AREAS TO BE IRRIGATED
IRRIGATION TO FUTURE D&C CONTRACT
RAINWATER HARVESTING TO BE COORDINATED FOR 100%

NOTES

THE CONTRACTOR MUST VERIFY IN FIELD (VIF) ALL DIMENSIONS AND CONDITIONS SHOWN ON THIS DRAWING PRIOR TO CONSTRUCTION.

SAFETY IN DESIGN INFORMATION

SAFETY IN DESIGN ISSUES HAVE BEEN ASSESSED AS PART OF THE DESIGN PROCESS. ALL REASONABLE STEPS HAVE BEEN TAKEN TO ENSURE HAZARDS AND RISKS NORMALLY ASSOCIATED WITH THIS TYPE OF DESIGN HAVE BEEN MITIGATED AND/OR COMMUNICATED. RESIDUAL HAZARDS AND RISKS AND/OR HAZARDS AND RISKS NOT NORMALLY ASSOCIATED WITH THIS TYPE OF WORK WHICH MAY REQUIRE SUBSEQUENT CONSIDERATION AND/OR ACTION ARE DESCRIBED IN -

ATHENA SID Register

Key Plan:

Project Status: 80% DESIGN DEVELOPMENT

Project No.: 60628128

REV.	DATE	DESCRIPTION	DRWN	ENGR	CHK	APP'D
A	23-OCT-2020	80% DESIGN DEVELOPMENT ISSUE	CL		JB	DP
A	16-OCT-2020	80% DESIGN DEVELOPMENT ISSUE	CL		JB	DP

ARCHITECT:

AECOM

CIVIL/STRUCTURAL ENGINEER:

AECOM

MEP ENGINEER:

AECOM

AGILE No.:

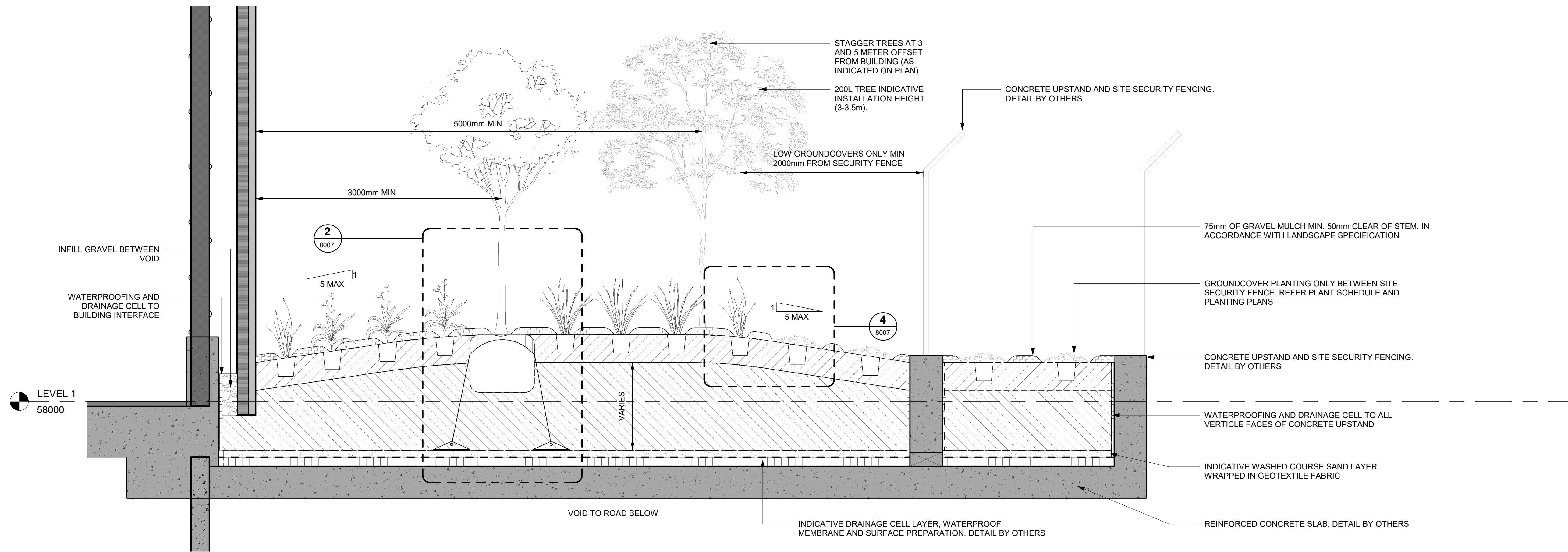
PROJECT: ATHENA

TITLE: LANDSCAPE IRRIGATION PLAN

SCALE:
1 : 300

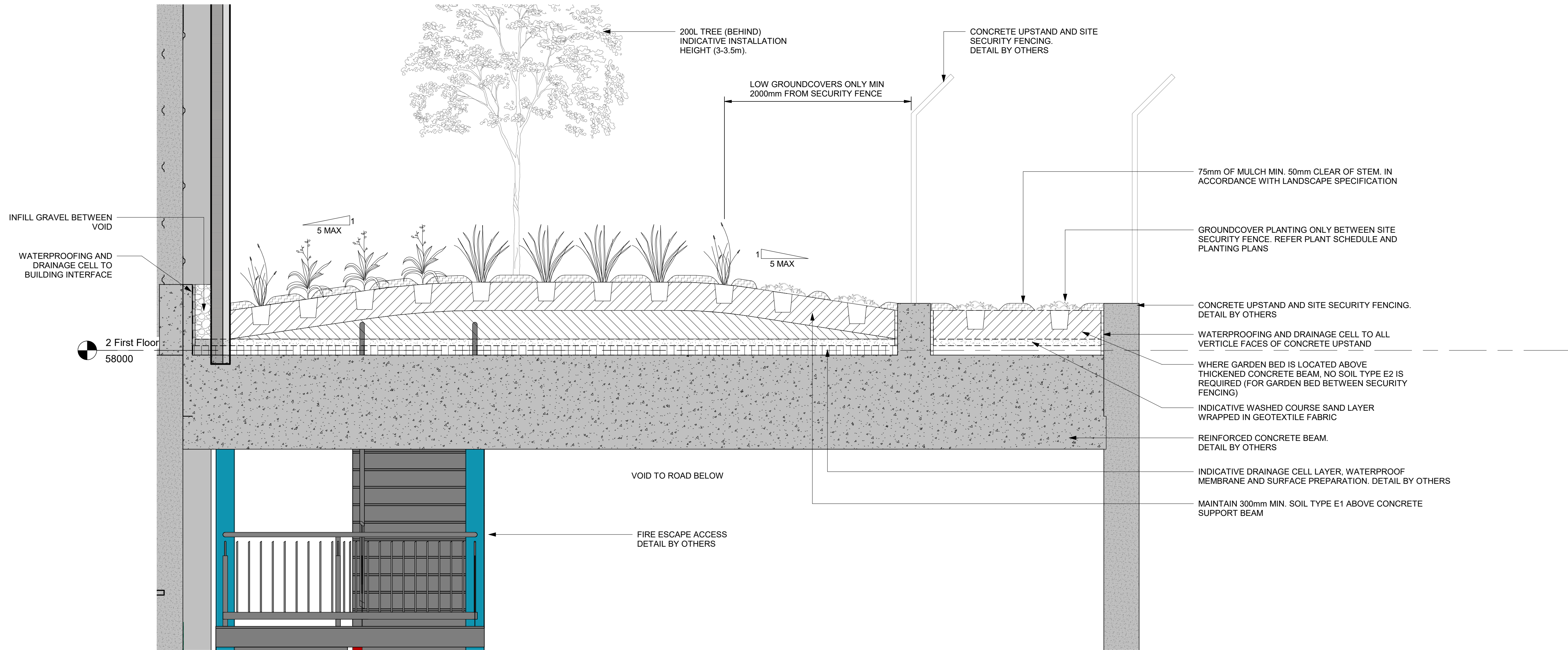
DRAWING NO.:
ATHENA-ACM-XX-XX-DR-A-8005

REV.:
A



1 PODIUM GARDEN BED - TYPICAL SECTION

scale 1 : 25



2 PODIUM GARDEN BED OVER BEAM - TYPICAL SECTION

scale 1 : 25

NOTES

THE CONTRACTOR MUST VERIFY IN FIELD (VIF) ALL DIMENSIONS AND CONDITIONS SHOWN ON THIS DRAWING PRIOR TO CONSTRUCTION.

SAFETY IN DESIGN INFORMATION

SAFETY IN DESIGN ISSUES HAVE BEEN ASSESSED AS PART OF THE DESIGN PROCESS. ALL REASONABLE STEPS HAVE BEEN TAKEN TO ENSURE HAZARDS AND RISKS NORMALLY ASSOCIATED WITH THIS TYPE OF DESIGN HAVE BEEN MITIGATED AND/OR COMMUNICATED. RESIDUAL HAZARDS AND RISKS AND/OR HAZARDS AND RISKS NOT NORMALLY ASSOCIATED WITH THIS TYPE OF WORK WHICH MAY REQUIRE SUBSEQUENT CONSIDERATION AND/OR ACTION ARE DESCRIBED IN -

ATHENA SID Register

Key Plan:

Project Status:

80% DESIGN DEVELOPMENT

Project No.:

60628128

REV.	DATE	DESCRIPTION	DRWN	ENGR	CHK	APP'D
A	23-OCT-2020	80% DESIGN DEVELOPMENT ISSUE	CL		JB	DP
A	16-OCT-2020	80% DESIGN DEVELOPMENT ISSUE	CL		JB	DP

ARCHITECT:

AECOM

CIVIL/STRUCTURAL ENGINEER:

AECOM

MEP ENGINEER:

AECOM

AGILE No.:

PROJECT:

ATHENA

TITLE:

LANDSCAPE SECTIONS - SHEET 1

SCALE:

1 : 25

DRAWING NO.:

ATHENA-ACM-XX-XX-DR-A-8006

REV.:

A

THE CONTRACTOR MUST VERIFY IN FIELD (VIF) ALL DIMENSIONS AND
CONDITIONS SHOWN ON THIS DRAWING PRIOR TO CONSTRUCTION.



SAFETY IN DESIGN ISSUES HAVE BEEN ASSESSED AS PART OF THE DESIGN PROCESS. ALL REASONABLE STEPS HAVE BEEN TAKEN TO ENSURE HAZARDS AND RISKS NORMALLY ASSOCIATED WITH THIS TYPE OF DESIGN HAVE BEEN MITIGATED AND/OR COMMUNICATED. RESIDUAL HAZARDS AND RISKS AND/OR HAZARDS AND RISKS NOT NORMALLY ASSOCIATED WITH THIS TYPE OF WORK WHICH MAY REQUIRE SUBSEQUENT CONSIDERATION AND/OR ACTION ARE DESCRIBED IN -

Key Plan:

Project No.:	60628128
--------------	----------

A	23-OCT-2020	80% DESIGN DEVELOPMENT ISSUE	CL				DP
A	16-OCT-2020	80% DESIGN DEVELOPMENT ISSUE	CL				DP
REV.	DATE	DESCRIPTION	DRWN	ENGR	CHK		APP'D

ARCHITECT:

CIVIL/STRUCTURAL ENGINEER:

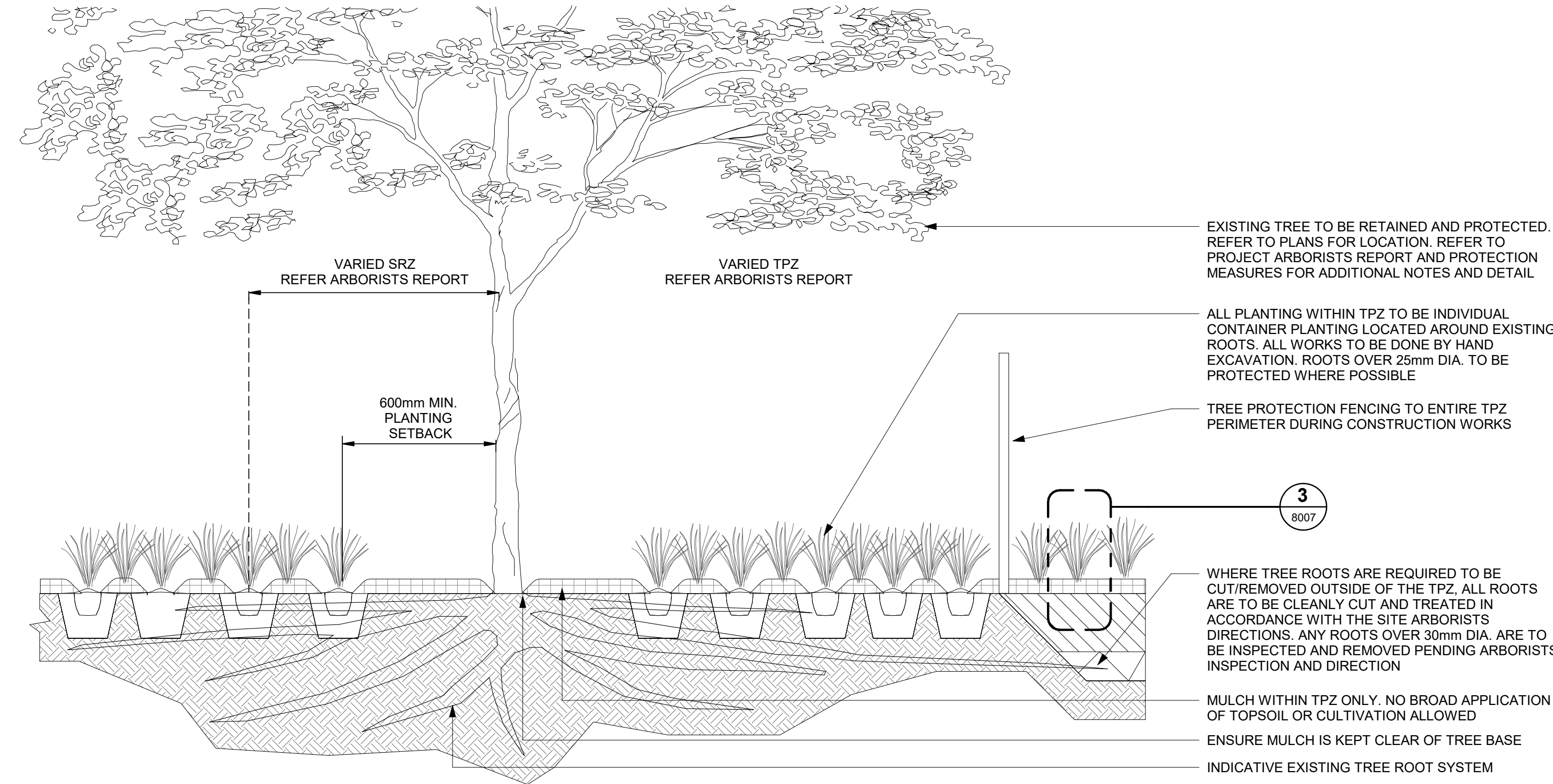
MEP ENGINEER:

AGILE No.:

PROJECT:	ATHENA
----------	--------

TITLE: LANDSCAPE DETAILS - SHEET 1

SCALE: 1:20	DRAWING NO.: ATHENA-ACM-XX-XX-DR-A-8007	REV.: A
----------------	--	------------



1 EXISTING TREE WITH PROPOSED PLANTING BENEATH

scale 1 : 20

REFERENCE DOCUMENTS
THE FOLLOWING STANDARDS & REFERENCE DOCUMENTS ARE TO BE REFERRED TO WITH REGARDS TO WORKS ASSOCIATED WITH EXISTING TREES TO BE RETAINED AND PROTECTED:

AS 4970 (2009) - PROTECTION OF TREES ON DEVELOPMENT SITES
AS 4373 (2007) - PRUNING OF AMENITY TREES
AS 4454 (2003) - COMPOSTS, SOILS CONDITIONERS AND MULCHES
AS 4687 (2007) - TEMPORARY FENCING AND HOARDINGS

TERMS & DEFINITIONS
THE FOLLOWING TERMS & DEFINITIONS (IN ACCORDANCE WITH AS 4970) THAT APPLY TO WORKS ASSOCIATED WITH EXISTING TREES TO BE RETAINED AND PROTECTED ARE:

DIAMETER AT BREAST HEIGHT (DBH) - THE NOMINAL TRUNK DIAMETER AT 1.4m ABOVE GROUND LEVEL.

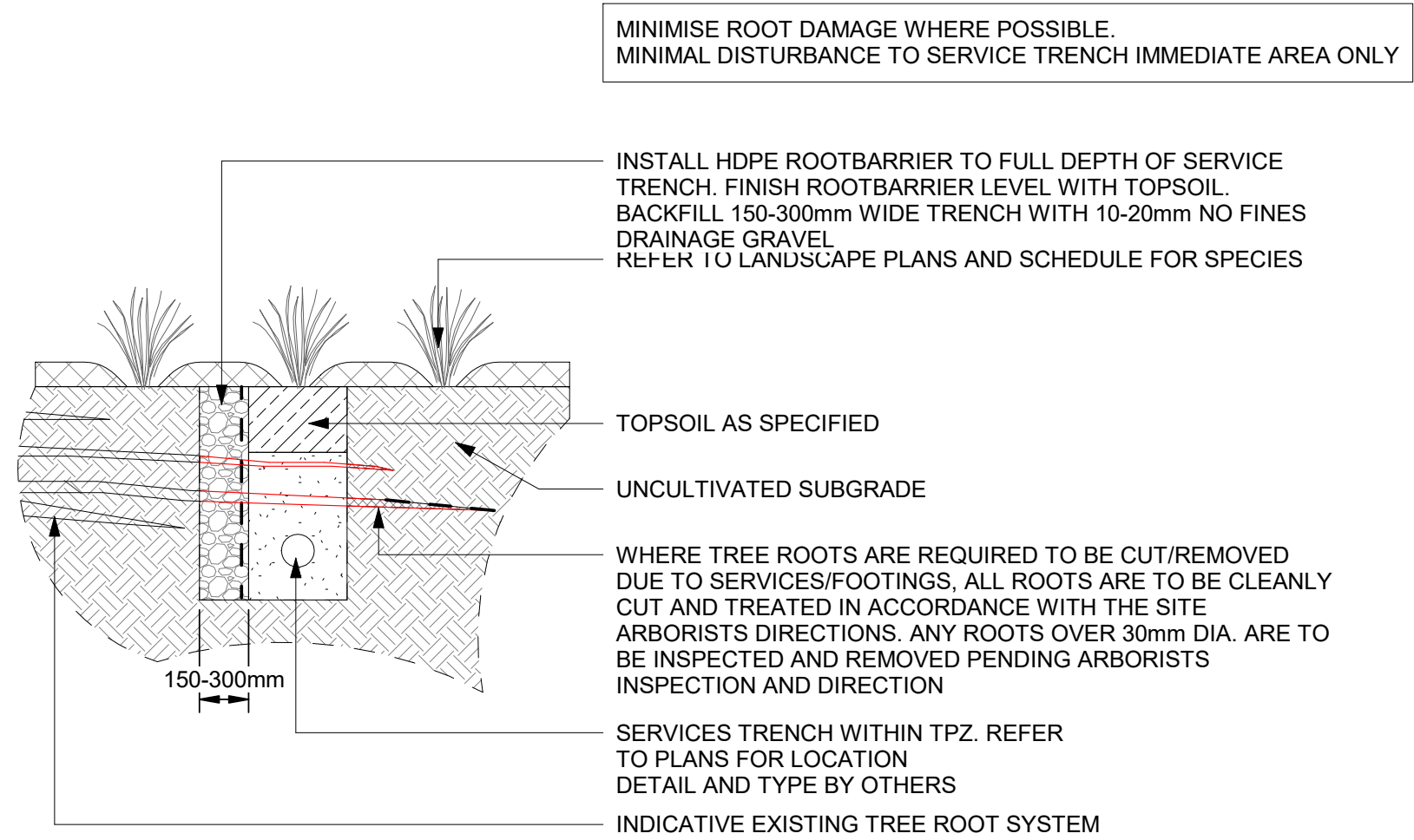
ARBORIST - THE PERSON RESPONSIBLE FOR CARRYING OUT THE TREE ASSESSMENT, REPORT PREPARATION, CONSULTATION, SPECIFYING TREE PROTECTION MEASURES, MONITORING AND CERTIFICATION. A SUITABLY EXPERIENCED AND QUALIFIED PROFESSIONAL (UNDER THE RELEVANT INTERNATIONAL, AUSTRALIAN & STATE ARBORICULTURAL BODIES) ABLE TO COMPETENTLY UNDERTAKE THE REQUIRED WORKS.

STRUCTURAL ROOT ZONE (SRZ) - THE AREA AROUND THE BASE OF A TREE REQUIRED FOR THE TREE'S STABILITY IN THE GROUND. THE WOODY ROOT GROWTH AND SOIL COHESION IN THIS AREA IS REQUIRED TO HOLD THE TREE UPRIGHT. THE SRZ HAS THE TRUNK AT THE CENTRE AND IS EXPRESSED BY THE RADIUS IN METERS.
THIS ZONE DOES NOT INCLUDE THE ROOT ZONE REQUIRED FOR A TREE'S VIGOUR AND LONG-TERM VIABILITY - THIS WILL BE A MUCH LARGER AREA.

TREE PROTECTION ZONE (TPZ) - A SPECIFIED AREA ABOVE AND BELOW GROUND AND AT A GIVEN DISTANCE FROM THE TRUNK SET ASIDE FOR THE PROTECTION OF THE TREE'S ROOTS AND CROWN TO PROVIDE FOR THE VIABILITY AND STABILITY OF A TREE TO BE RETAINED WHERE IT IS POTENTIALLY SUBJECT TO DAMAGE BY WORK.

VIGOUR - ABILITY OF A TREE TO SUSTAIN ITS LIFE PROCESSES.

WORK - ANY PHYSICAL ACTIVITY IN RELATION TO LAND THAT IS SPECIFIED BY THE AUTHORITY



2 EXISTING TREE - SERVICE TRENCH

scale 1 : 20

NOTES

THE CONTRACTOR MUST VERIFY IN FIELD (VIF) ALL DIMENSIONS AND CONDITIONS SHOWN ON THIS DRAWING PRIOR TO CONSTRUCTION.

SAFETY IN DESIGN INFORMATION

SAFETY IN DESIGN ISSUES HAVE BEEN ASSESSED AS PART OF THE DESIGN PROCESS. ALL REASONABLE STEPS HAVE BEEN TAKEN TO ENSURE HAZARDS AND RISKS NORMALLY ASSOCIATED WITH THIS TYPE OF DESIGN HAVE BEEN MITIGATED AND/OR COMMUNICATED. RESIDUAL HAZARDS AND RISKS AND/OR HAZARDS AND RISKS NOT NORMALLY ASSOCIATED WITH THIS TYPE OF WORK WHICH MAY REQUIRE SUBSEQUENT CONSIDERATION AND/OR ACTION ARE DESCRIBED IN -

ATHENA SID Register

Key Plan:

Project Status: 80% DESIGN DEVELOPMENT

Project No.: 60628128

REV.	DATE	DESCRIPTION	DRWN	ENGR	CHK	APP'D
A	23-OCT-2020	80% DESIGN DEVELOPMENT ISSUE	CL		JB	DP
A	16-OCT-2020	80% DESIGN DEVELOPMENT ISSUE	CL		JB	DP

ARCHITECT:

AECOM

CIVIL/STRUCTURAL ENGINEER:

AECOM

MEP ENGINEER:

AECOM

AGILE No.:

PROJECT: ATHENA

TITLE: LANDSCAPE DETAILS - SHEET 2

SCALE: 1 : 20
DRAWING NO.: ATHENA-ACM-XX-XX-DR-A-8008
REV.: A