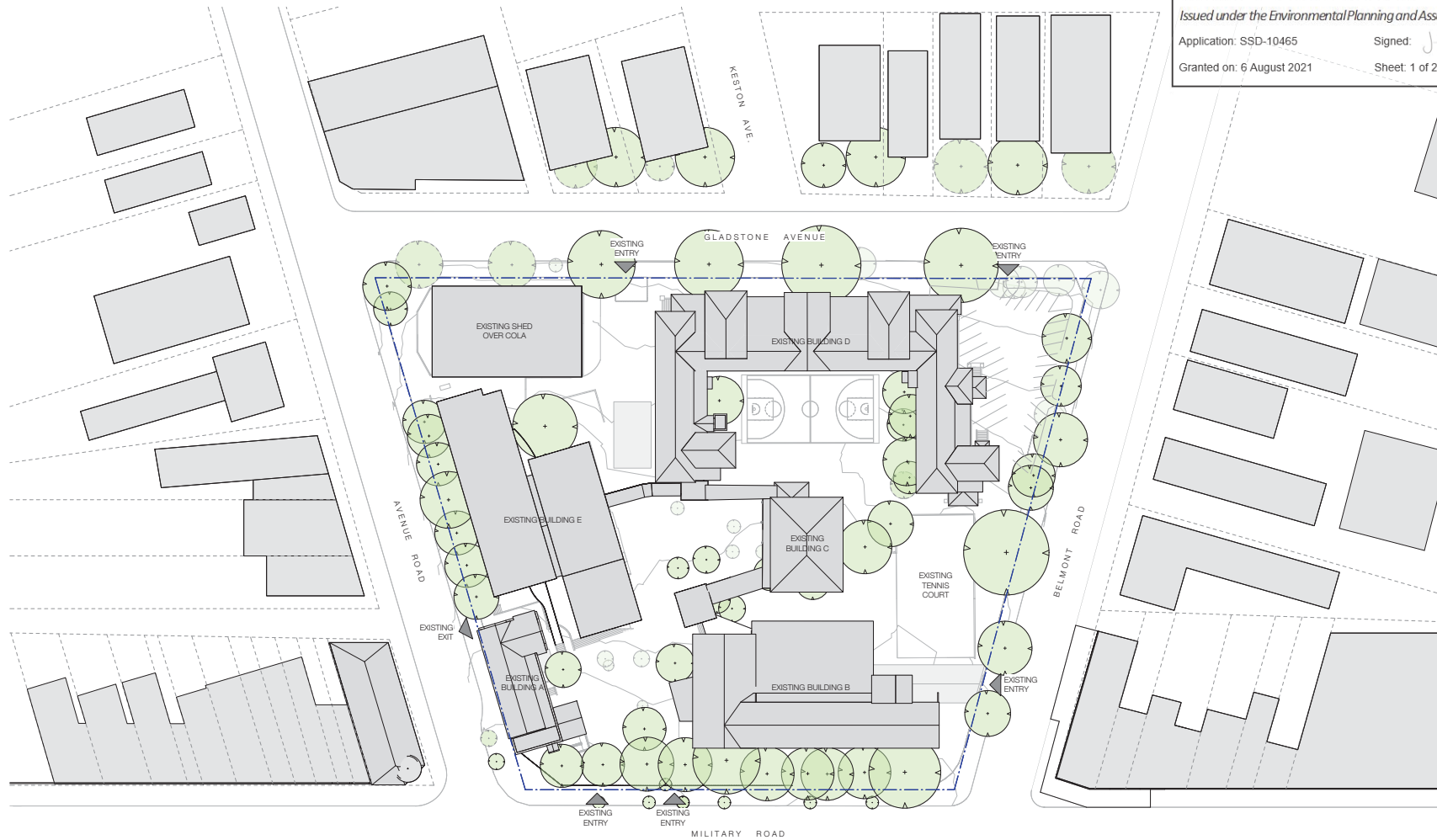




Recent revision history			Date
#	Status	Description	
1	PRELIMINARY	Issued for TOA Review	17/03/21
2	PRELIMINARY	Issued for TOA Review	23/03/21
3	PRELIMINARY	Issued for SDA	27/05/21

Notes
Copyright © Woods Bagot 2018
All Rights Reserved
No material may be reproduced without prior permission
Contractor must verify all dimensions on site before commencing work or preparing shop drawings.
Do not scale drawings.



Project
MOSMAN HIGH SCHOOL

Client
SCHOOL INFRASTRUCTURE NSW

Issued

MULTIPLEX
W-B™
WOODS BAGOT

Project number
121468
Checked
CS
Approved
GS
Sheet size
A1
Scale
1:500

Sheet title

EXISTING SITE PLAN

Sheet number
SSD-1101
Status
PRELIMINARY
Revision
3

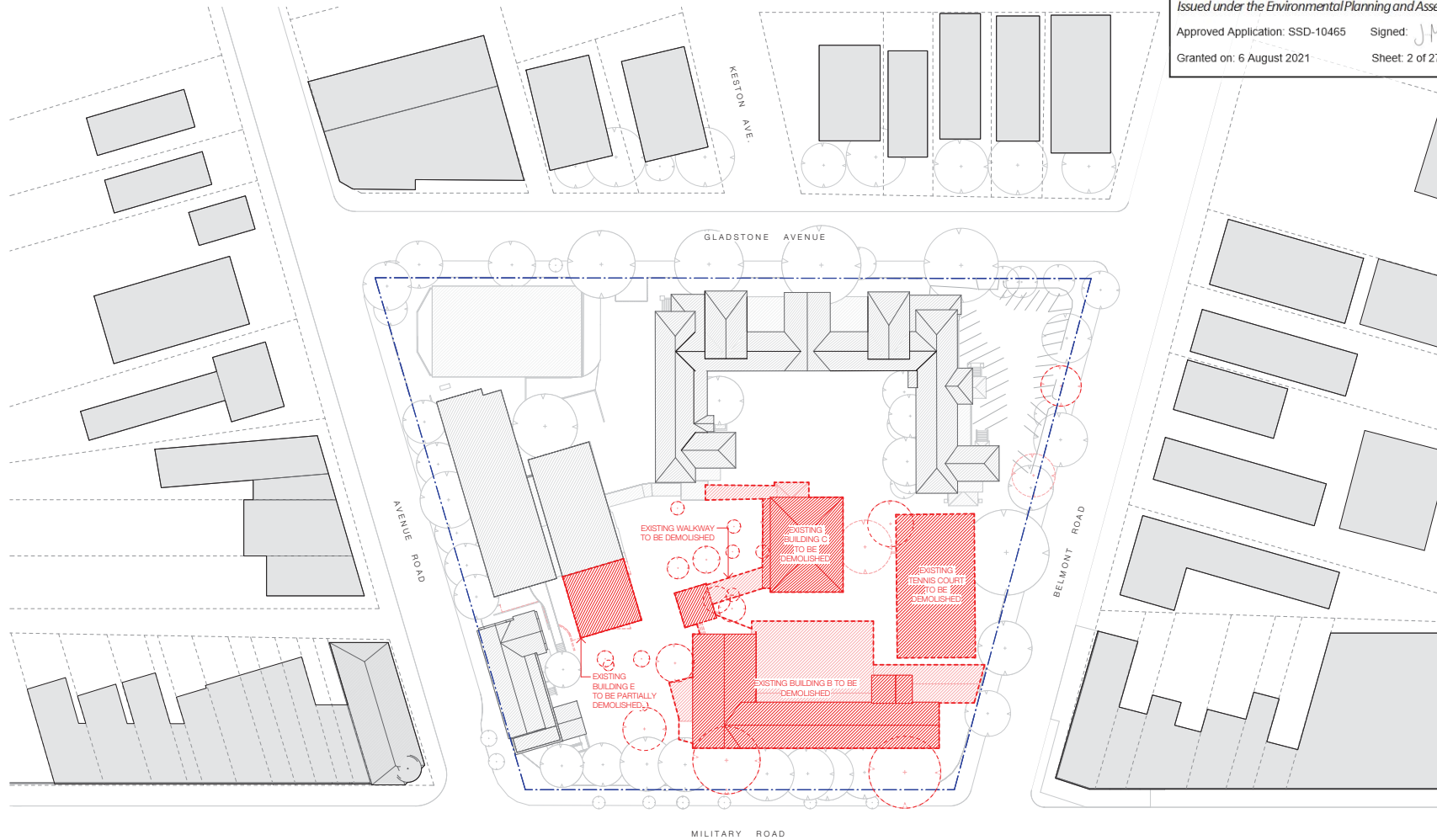


Recent revision history			Date
#	Status	Description	
1	PRELIMINARY	Issued for TOA Review	13/03/21
2	PRELIMINARY	Issued for TOA	23/03/21
3	PRELIMINARY	Issued for SDA	23/03/21

Notes
Copyright © Woods Bagot 2018
All Rights Reserved
No material may be reproduced without prior permission
Contractor must verify all dimensions on site before commencing work or preparing shop drawings.
Do not scale drawings.

EXISTING
STRUCTURE TO BE
DEMOLISHED

EXISTING TREE TO BE REMOVED
(REFER ALSO TO ARBORIST REPORT
AND LANDSCAPE ARCHITECT'S
DOCUMENTATION)



Project
MOSMAN HIGH SCHOOL

Client
SCHOOL INFRASTRUCTURE NSW

Issued

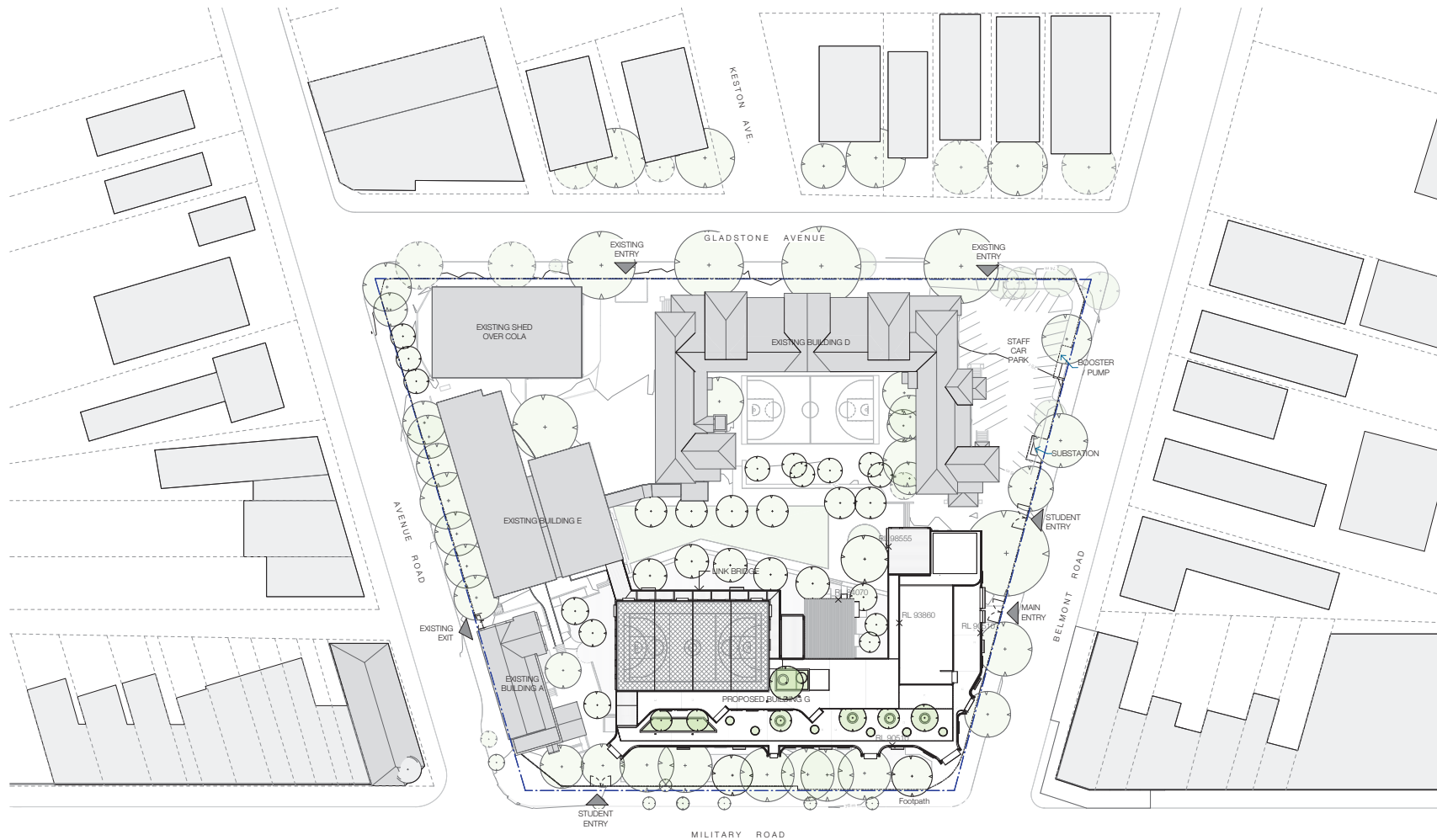
MULTIPLEX
W-B™
WOODS BAGOT

Project number
121468
Checked
CS
Approved
GS
Sheet size
A1
Scale
1:500

Sheet title

DEMOLITION PLAN - SITE

Sheet number
SSD-1102
Status
PRELIMINARY
Revision
3



Recent revision history			Date
#	Status	Description	
1	PRELIMINARY	Issued for TOA Review	17/03/21
2	PRELIMINARY	Issued for TOA	23/03/21
3	PRELIMINARY	Issued for SDA	09/04/21

Notes
 Copyright © Woods Bagot 2018
 All Rights Reserved
 No material may be reproduced without prior permission
 Contractor must verify all dimensions on site before commencing work or preparing shop drawings.
 Do not scale drawings.

Legend

- Site Boundary
- Fence
- [Y] Gate
- ▲ Entry/Exit

Project
 MOSMAN HIGH SCHOOL

Client
 SCHOOL INFRASTRUCTURE NSW

Issue

MULTIPLEX
W-B™
 WOODS BAGOT

Project number		Size check	
121468		25mm	
Checked	Approved	Sheet size	Scale
CS	GS	A1	1:500

Sheet title

OVERALL SITE PLAN

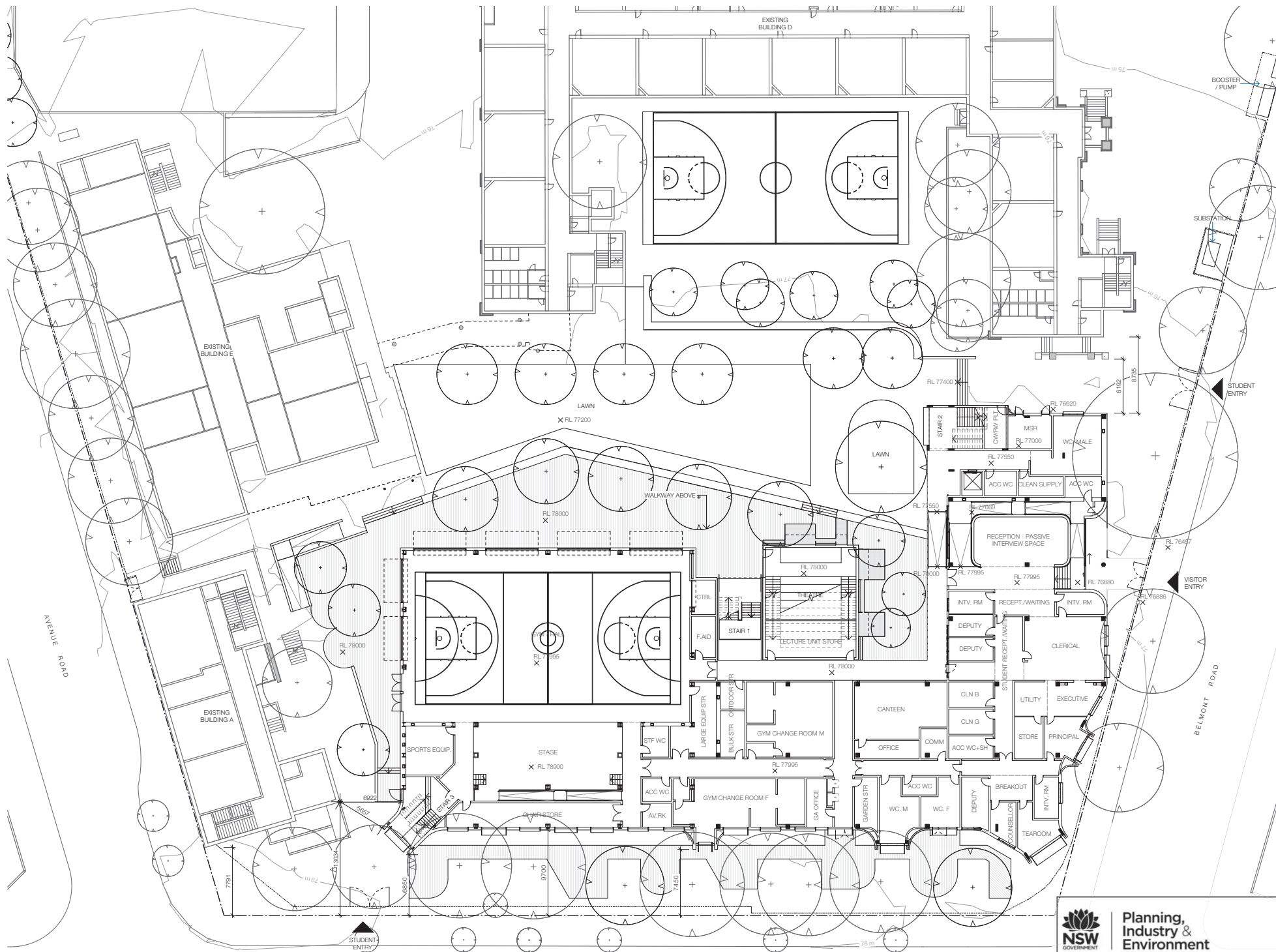
Sheet number		Revision
SSD-1103		3
Status		
PRELIMINARY		



**Planning,
 Industry &
 Environment**

Issued under the Environmental Planning and Assessment Act 1979

Approved Application: SSD-10465 Signed: JMC
 Granted on: 6 August 2021 Sheet: 3 of 27



Recent revision history			Date
#	Status	Description	
1	PRELIMINARY	Issued for TOA Review	13/03/21
2	PRELIMINARY	Issued for TOA	23/03/21
3	PRELIMINARY	Issued for SDA	23/03/21

Notes
Copyright © Woods Bagot 2018
All Rights Reserved
No material may be reproduced without prior permission
Contractor must verify all dimensions on site before commencing work or preparing shop drawings.
Do not scale drawings.

- Legend**
- Site Boundary
 - Fence
 - Gate
 - Entry/Exit

Project
MOSMAN HIGH SCHOOL

Client
SCHOOL INFRASTRUCTURE NSW

MULTIPLEX
W-B
WOODS BAGOT

Project number 121468	Sign check 25mm
Checked CS	Approved GS
Sheet size A1	Scale 1:200

Sheet title
GROUND FLOOR PLAN

Sheet number SSD-2201	Revision 3
Status PRELIMINARY	



**Planning,
Industry &
Environment**

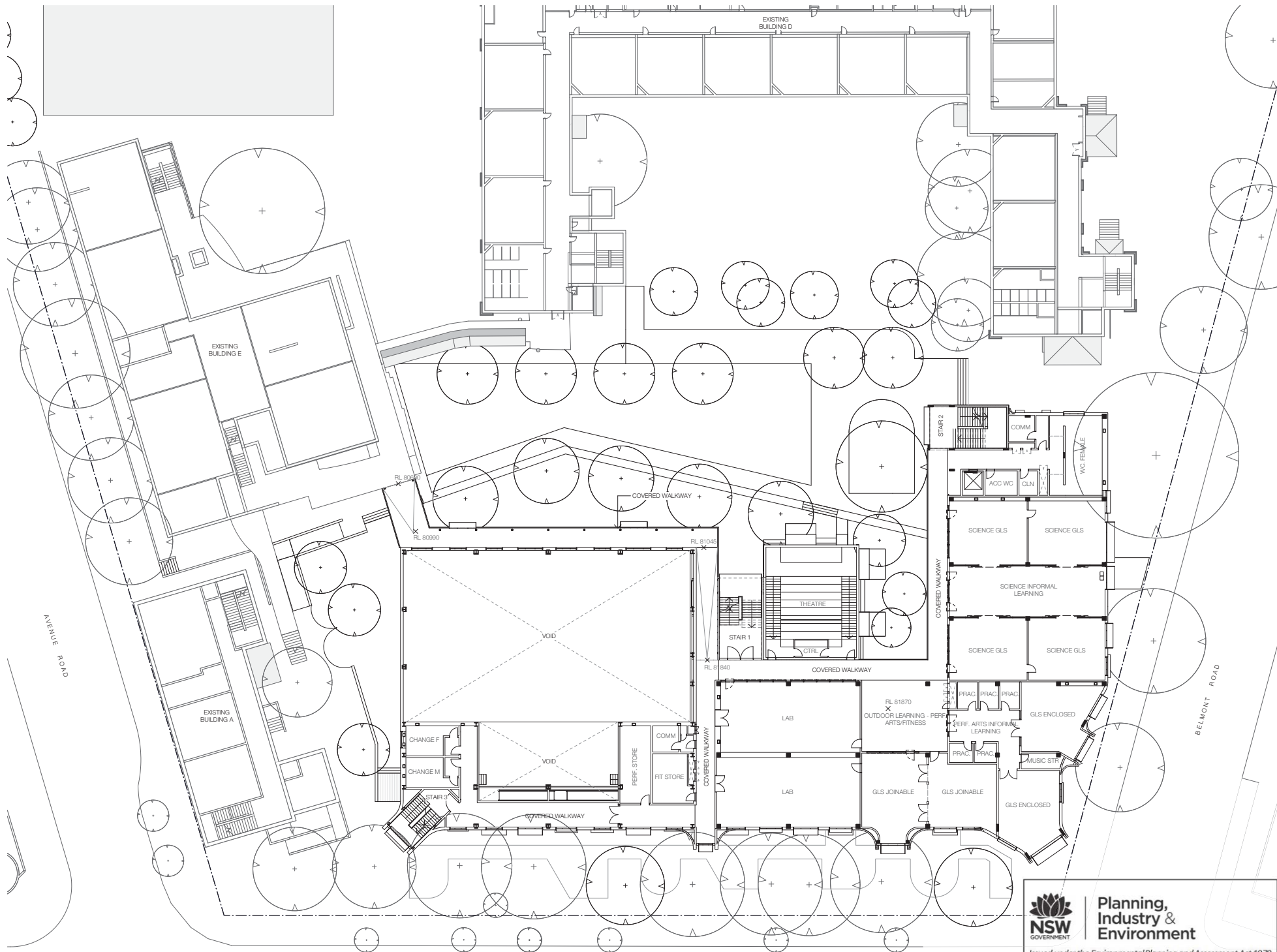
Issued under the Environmental Planning and Assessment Act 1979

Approved Application: SSD-10465

Signed: *JML*

Granted on: 6 August 2021

Sheet: 4 of 27



Recent revision history			Date
#	Status	Description	
1	PRELIMINARY	Issued for TOA Review	17/03/21
2	PRELIMINARY	Issued for TOA	23/03/21
3	PRELIMINARY	Issued for SDA	27/05/21

Notes
 Copyright © Woods Bagot 2018
 All Rights Reserved
 No material may be reproduced without prior permission
 Contractor must verify all dimensions on site before commencing work or preparing shop drawings.
 Do not scale drawings.

Project
MOSMAN HIGH SCHOOL
 Client
 SCHOOL INFRASTRUCTURE NSW

Issued by
MULTIPLEX
W-B
 WOODS BAGOT

Project number 121468	Sign check 25mm	Scale 1:200
Checked CS	Approved GS	Sheet size A1

Sheet title
LEVEL 1 FLOOR PLAN

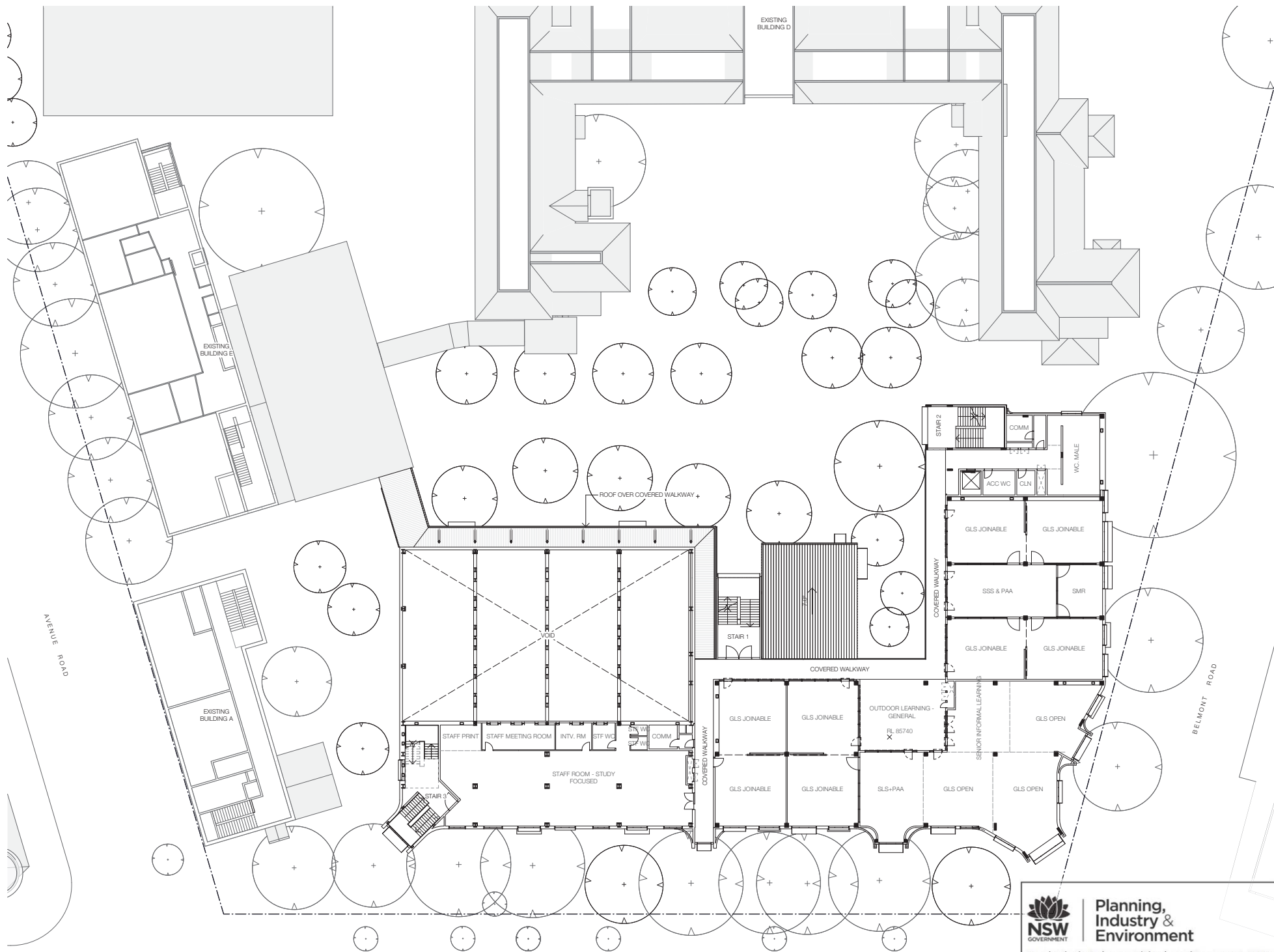
Sheet number SSD-2202	Revision 3
Status PRELIMINARY	

Planning, Industry & Environment

Issued under the Environmental Planning and Assessment Act 1979

Approved Application: SSD-10465 Signed: *JML* Sheet: 5 of 27

Granted on: 6 August 2021



Recent revision history			Date
#	Status	Description	
1	PRELIMINARY	Issued for TOA Review	17/03/21
2	PRELIMINARY	Issued for TOA	23/03/21
3	PRELIMINARY	Issued for SDA	27/03/21

Notes
 Copyright © Woods Bagot 2018
 All Rights Reserved
 No material may be reproduced without prior permission
 Contractor must verify all dimensions on site before commencing work or preparing shop drawings.
 Do not scale drawings.

Project
MOSMAN HIGH SCHOOL
 Client
SCHOOL INFRASTRUCTURE NSW

Issue
MULTIPLEX
W-B™
WOODS BAGOT

Project number	Scale	Sheet size	Scale
121468	25mm	A1	1:200
Checked CS	Approved GS		

Sheet title
LEVEL 2 FLOOR PLAN

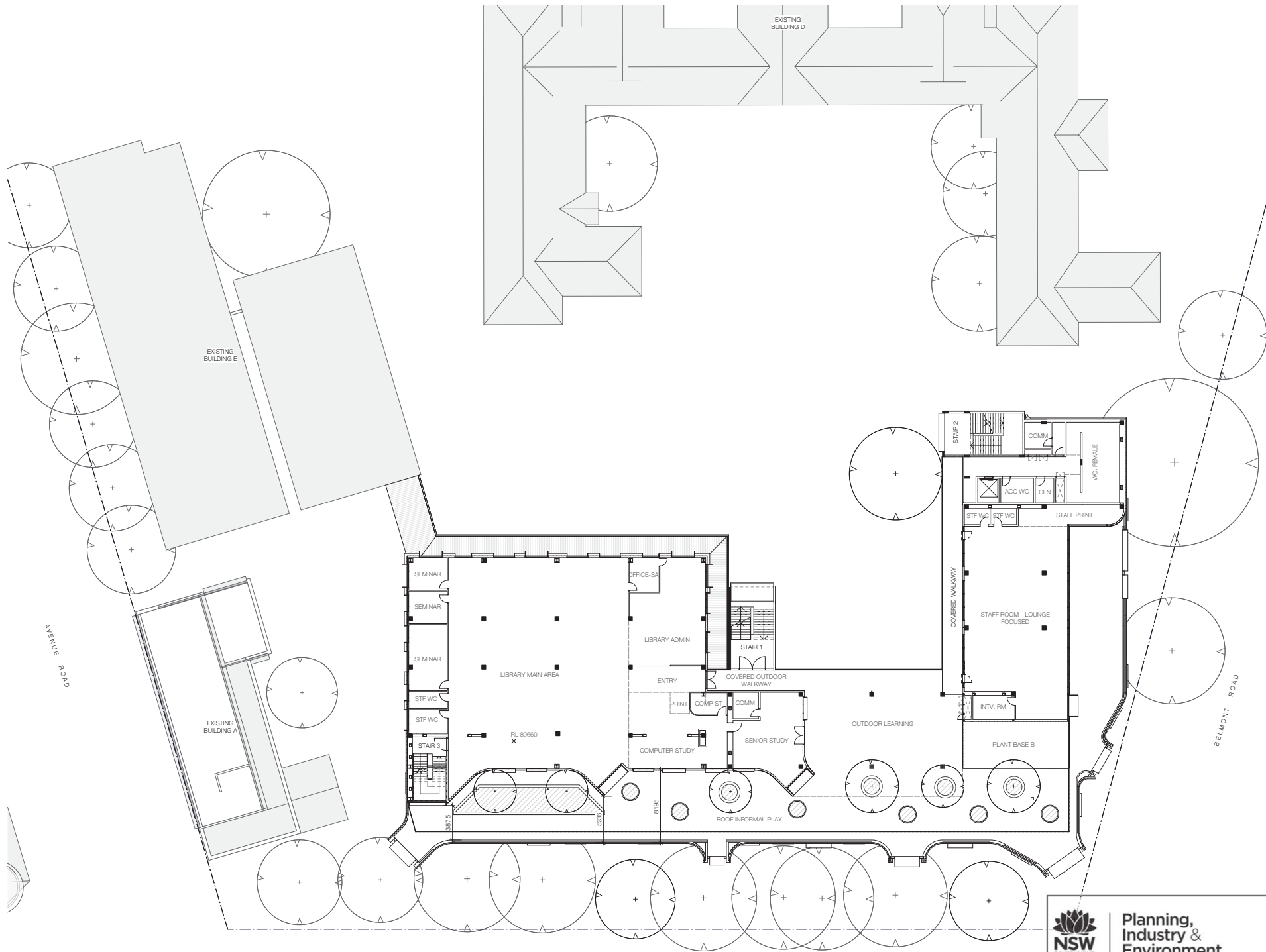
Sheet number	Revision
SSD-2203	3
Status	
PRELIMINARY	

Planning, Industry & Environment

Issued under the Environmental Planning and Assessment Act 1979

Approved Application: SSD-10465 Signed: *JML* Sheet: 6 of 27

Granted on: 6 August 2021



Recent revision history			Date
#	Status	Description	
1	PRELIMINARY	Issued for TOA Review	17/03/21
2	PRELIMINARY	Issued for TOA	23/03/21
3	PRELIMINARY	Issued for SDA	27/03/21

Notes
 Copyright © Woods Bagot 2018
 All Rights Reserved
 No material may be reproduced without prior permission
 Contractor must verify all dimensions on site before commencing work or preparing shop drawings.
 Do not scale drawings.

Project
MOSMAN HIGH SCHOOL
 Client
SCHOOL INFRASTRUCTURE NSW

Issued
MULTIPLEX
W-B™
WOODS BAGOT

Project number
121468
 Checked
 CS
 Approved
 GS
 Sheet size
 A1
 Scale
 1:200

Sheet title
LEVEL 3 FLOOR PLAN

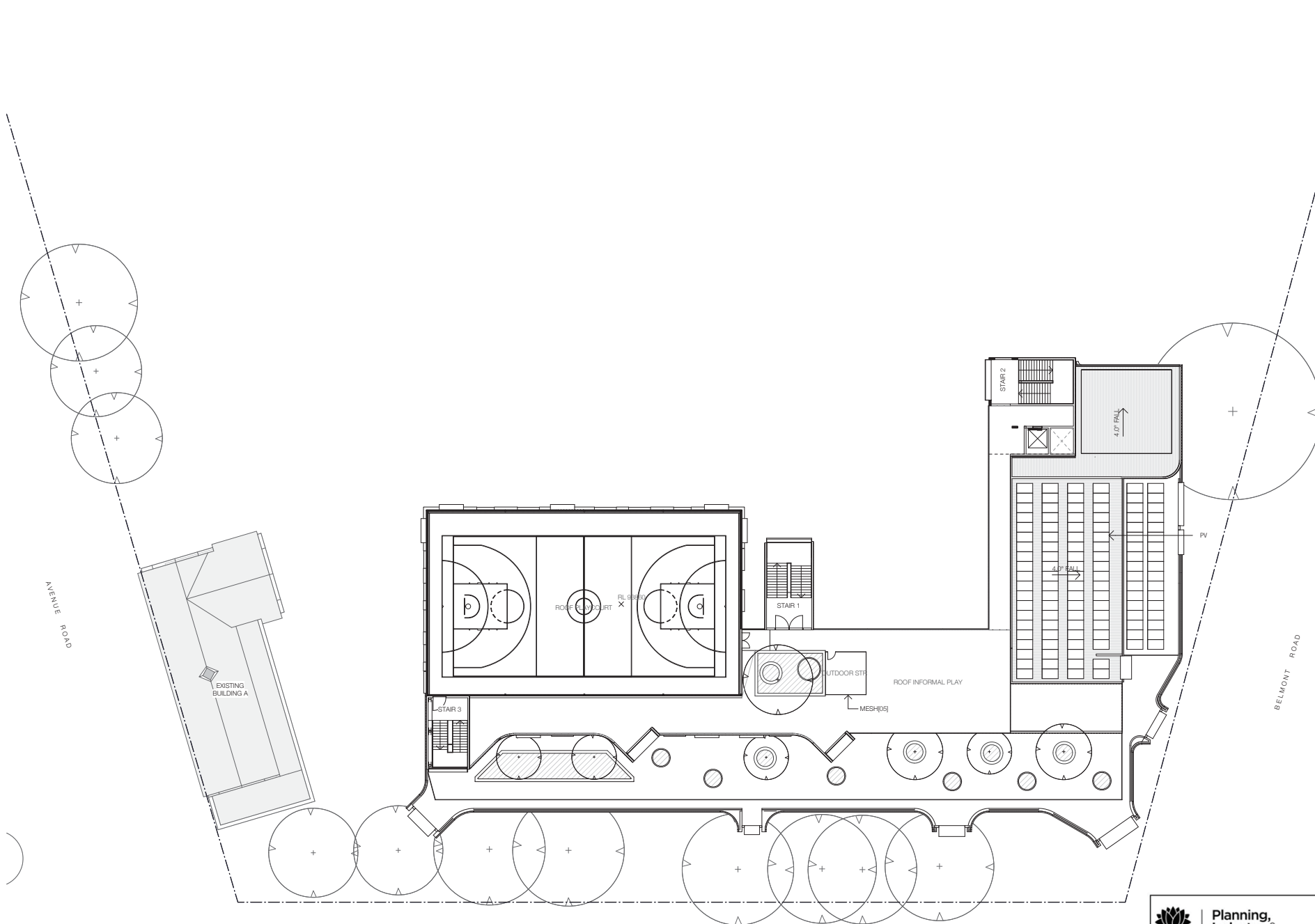
Sheet number
SSD-2204
 Status
PRELIMINARY
 Revision
3



**Planning,
 Industry &
 Environment**

Issued under the Environmental Planning and Assessment Act 1979

Approved Application: SSD-10465
 Signed: *JMC*
 Granted on: 6 August 2021
 Sheet: 7 of 27



Recent revision history			Date
#	Status	Description	
1	PRELIMINARY	Issued for TOA Review	13/03/21
2	PRELIMINARY	Issued for TOA	23/03/21
3	PRELIMINARY	Issued for SCIA	23/03/21

Notes
Copyright © Woods Bagot 2018
All Rights Reserved
No material may be reproduced without prior permission
Contractor must verify all dimensions on site before commencing work or preparing shop drawings.
Do not scale drawings.

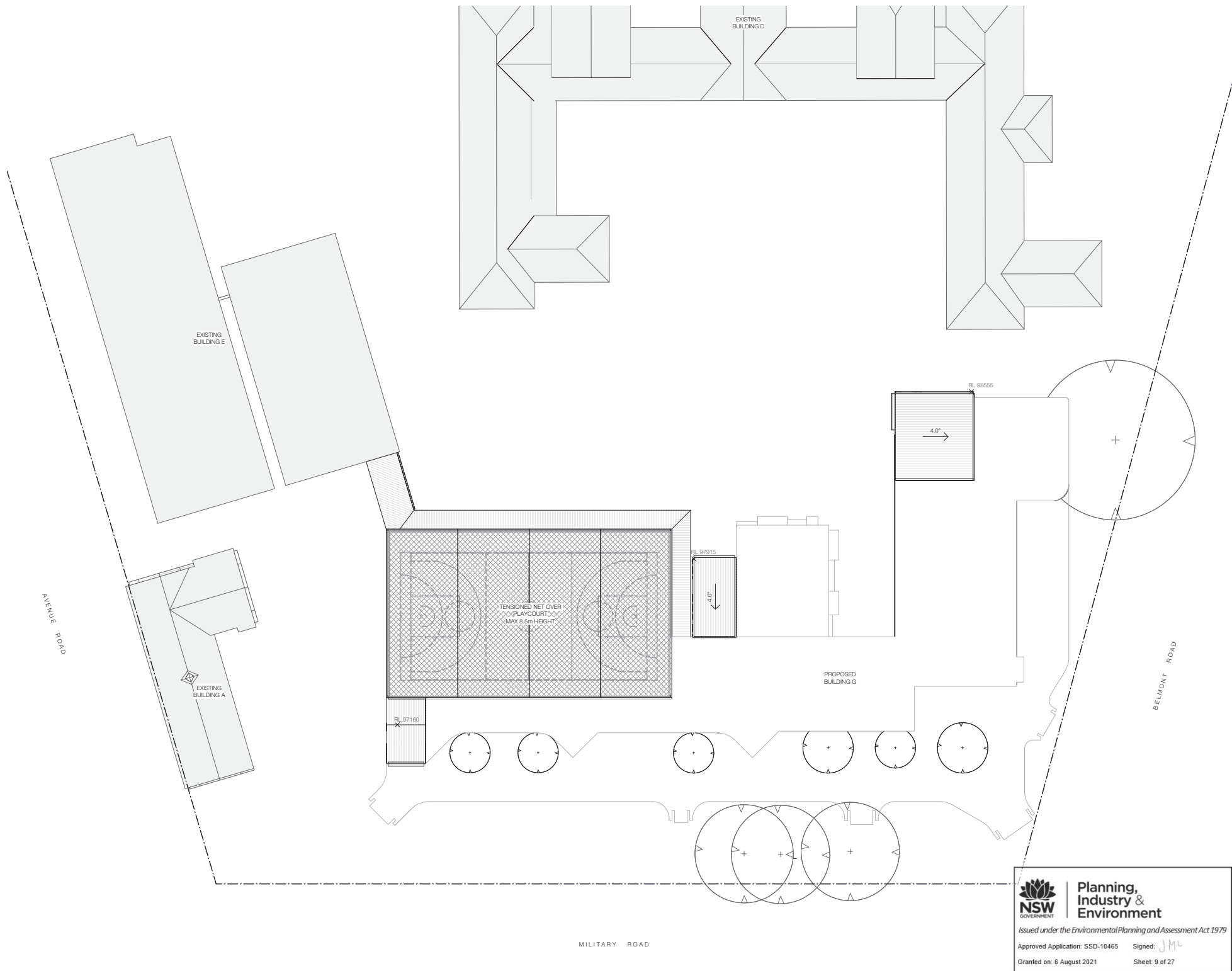
Project
MOSMAN HIGH SCHOOL
Client
SCHOOL INFRASTRUCTURE NSW

Issued
MULTIPLEX
W-B™
WOODS BAGOT

Project number	Scale check	Scale
121468	25mm	1:200
Checked CS	Approved GS	Sheet size A1

NSW GOVERNMENT
Planning, Industry & Environment
Issued under the Environmental Planning and Assessment Act 1979
Approved Application: SSD-10485 Signed: JML
Granted on: 8 August 2021 Sheet: 8 of 27

Sheet title
LEVEL 4 FLOOR PLAN
Sheet number
SSD-2205
Status
PRELIMINARY
Revision
3



Recent revision history			Date
#	Status	Description	
1	PRELIMINARY	Issued for TOA Review	13/03/21
2	PRELIMINARY	Issued for TOA	23/03/21
3	PRELIMINARY	Issued for SSCA	23/05/21
4	PRELIMINARY	Issued for SSCA	04/06/21

Notes

Copyright © Woods Bagot 2018
All Rights Reserved
No material may be reproduced without prior permission

Contractor must verify all dimensions on site before commencing work or preparing shop drawings.

Do not scale drawings.

Project
MOSMAN HIGH SCHOOL

Client
SCHOOL INFRASTRUCTURE NSW

Issuer

MULTIPLEX

W-B™
WOODS BAGOT

Project number		Size check	
121468		25mm	
Checked	Approved	Sheet size	Scale
CS	GS	A1	1:200

Sheet title
ROOF PLAN

Sheet number
SSD-2206

Status
PRELIMINARY

Revision
4



Planning,
Industry &
Environment

Issued under the Environmental Planning and Assessment Act 1979

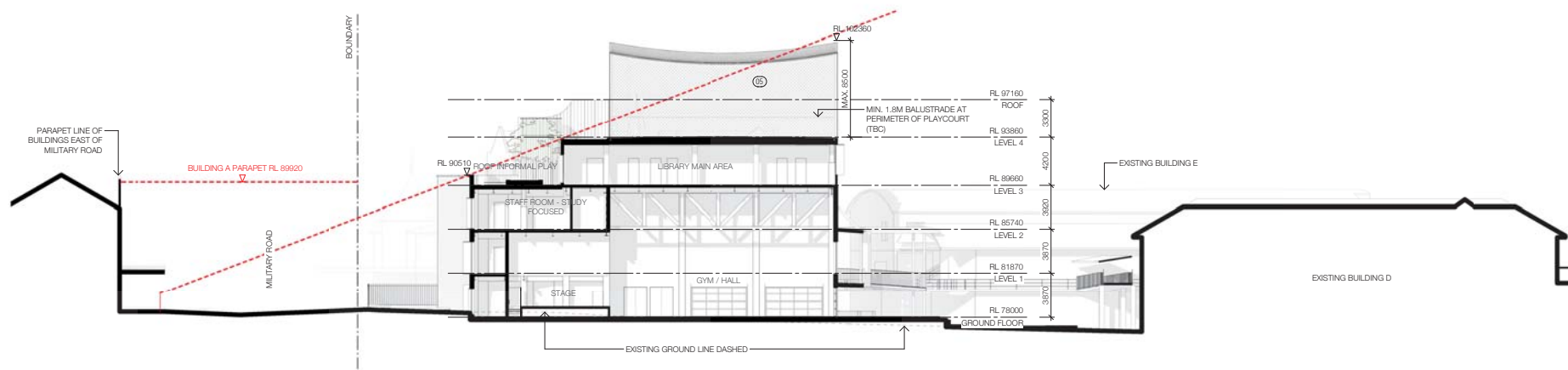
Approved Application: SSD-10465

Granted on: 6 August 2021

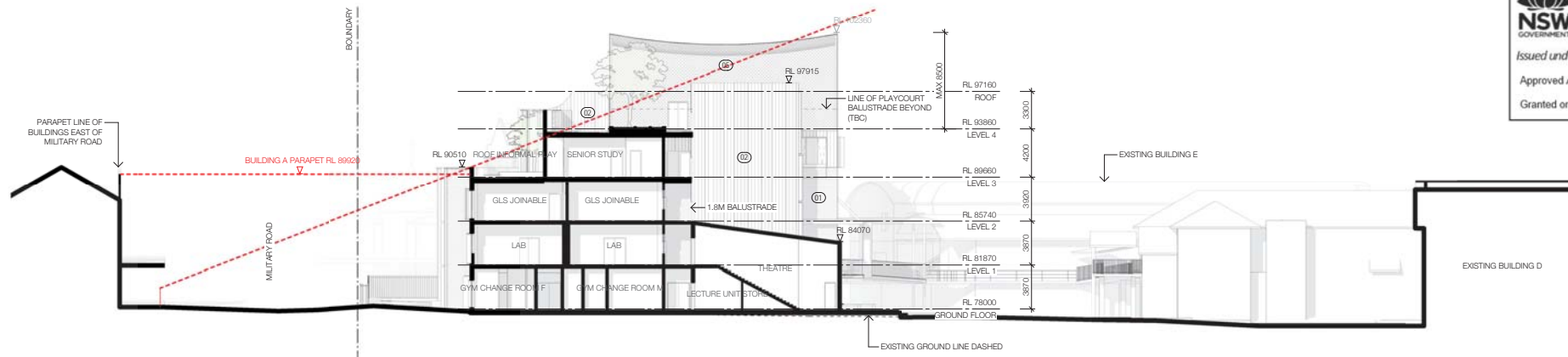
Signed: JMC

Sheet: 9 of 27

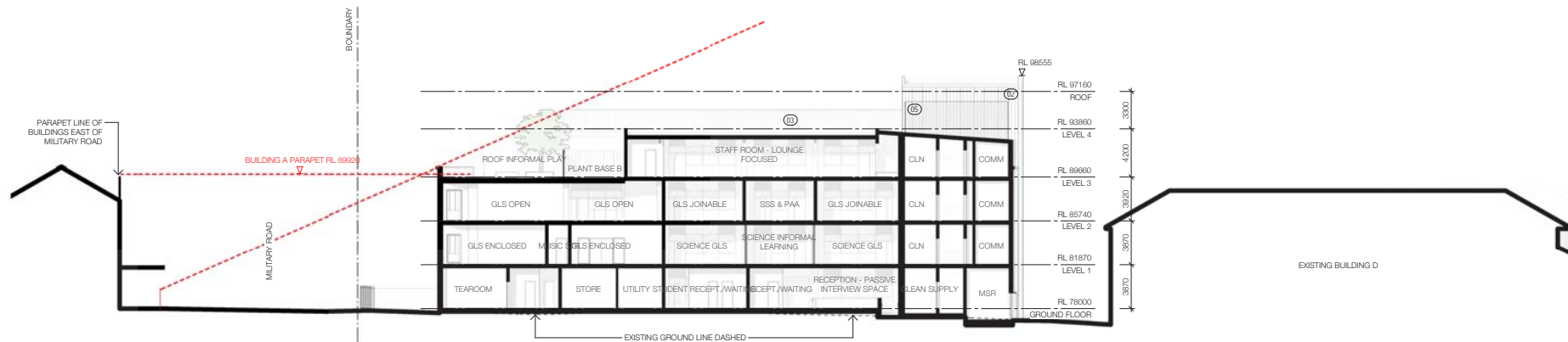
1 SECTION AA



2 SECTION BB



3 SECTION CC



#	Status	Description	Date
1	PRELIMINARY	Issued for TOA Review	17/03/21
2	PRELIMINARY	Issued for TOA	23/03/21
3	PRELIMINARY	Issued for SSIA	23/03/21
4	PRELIMINARY	Issued for SSIA	04/06/21

Notes
Copyright © Woods Bagot 2018
All Rights Reserved
No material may be reproduced without prior permission
Contractor must verify all dimensions on site before commencing work or preparing shop drawings.
Do not scale drawings.

- 01 DRY PRESSED BRICK
- 02 STANDING SEAM
- 03 GALVANISED METAL BALUSTRADE
- 04 RED STANDING SEAM
- 05 METAL CLADDING
- 06 MESH
- 07 GLAZING
- 08 PRE-FINISHED COLOURED OFC CLADDING
- 09 PRE-FINISHED COLOURED METAL



**Planning,
Industry &
Environment**

Issued under the Environmental Planning and Assessment Act 1979

Approved Application: SSD-10465

Signed: JML

Granted on: 6 August 2021

Sheet 10 of 27

Project
MOSMAN HIGH SCHOOL

Client
SCHOOL INFRASTRUCTURE NSW

Issue

MULTIPLEX
W-B™
WOODS BAGOT

Project number
121468
Checked
CS
Approved
GS
Sheet size
A1
Scale
1:200

Sheet title

SECTIONS

Sheet number
SSD-3201

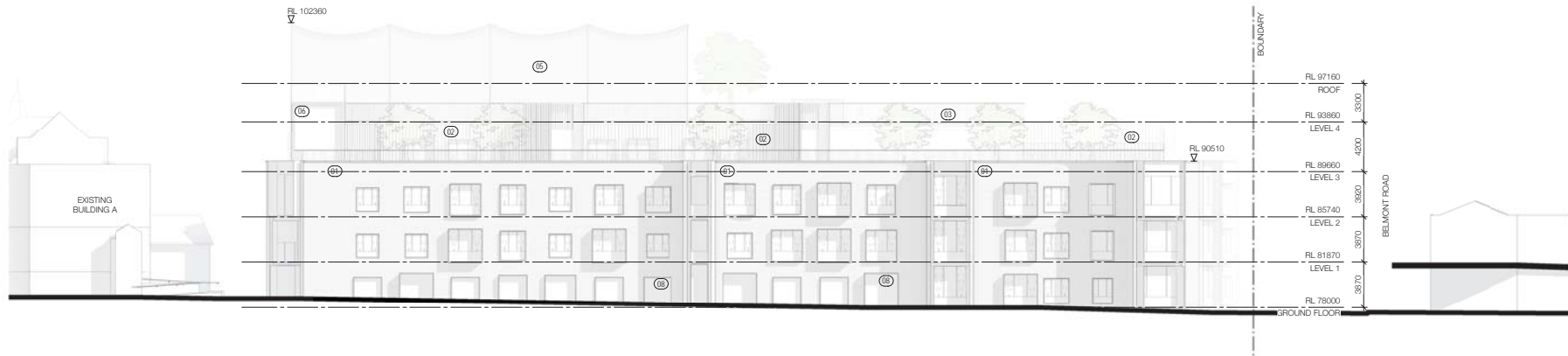
Status
PRELIMINARY

Revision
4

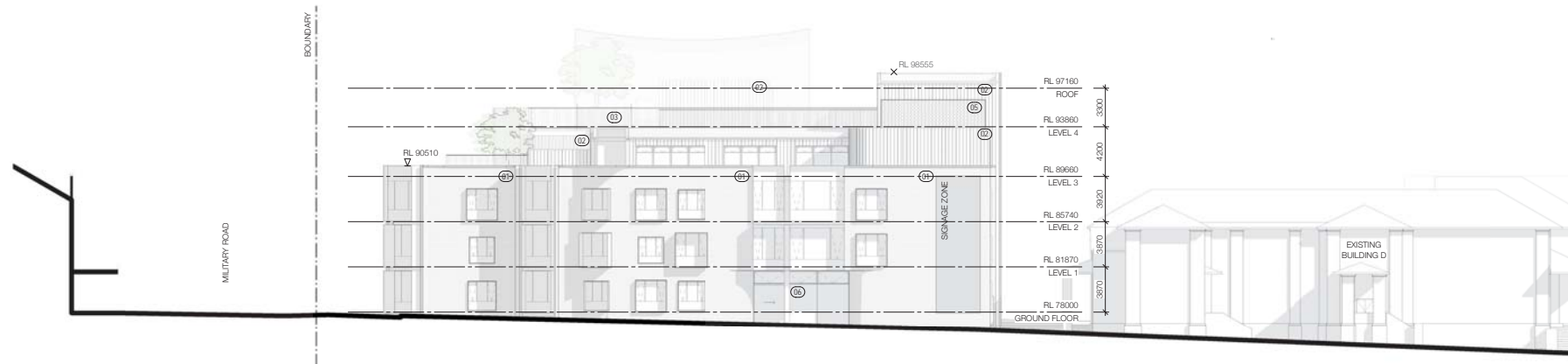
Recent revision history			Date
#	Status	Description	
1	PRELIMINARY	Issued for TOA Review	17/03/21
2	PRELIMINARY	Issued for TOA	23/03/21
3	PRELIMINARY	Issued for SDA	27/05/21

Notes
Copyright © Woods Bagot 2018
All Rights Reserved
No material may be reproduced without prior permission
Contractor must verify all dimensions on site before commencing work or preparing shop drawings.
Do not scale drawings.

- 01 DRY PRESSED BRICK
- 02 STANDING SEAM
- 03 METAL CLADDING
- 04 GALVANISED METAL BALUSTRADE
- 05 GALVANISED METAL CLADDING
- 06 MESH
- 07 GLAZING
- 08 PRE-FINISHED COLOURED
- 09 CFC CLADDING
- 10 PRE-FINISHED COLOURED METAL



1 EAST ELEVATION
SCALE 1:200



2 NORTH ELEVATION
SCALE 1:200

Project
MOSMAN HIGH SCHOOL

Client
SCHOOL INFRASTRUCTURE NSW

Issued

MULTIPLEX
W-B™
WOODS BAGOT

Project number	Size check	Scale
121468	25mm	1:200
Checked	Approved	Sheet size
CS	GS	A1

Sheet title
ELEVATIONS - EAST/NORTH

Sheet number	Revision
SSD-3202	3
Status	
PRELIMINARY	



**Planning,
Industry &
Environment**

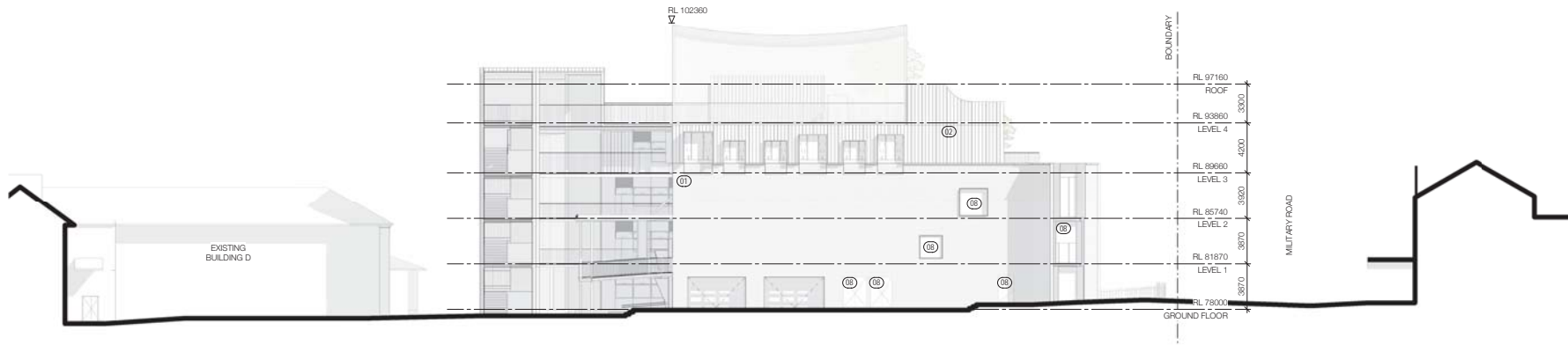
Issued under the *Environmental Planning and Assessment Act 1979*

Approved Application: SSD-10465 Signed: JMC
Granted on: 6 August 2021 Sheet: 11 of 27

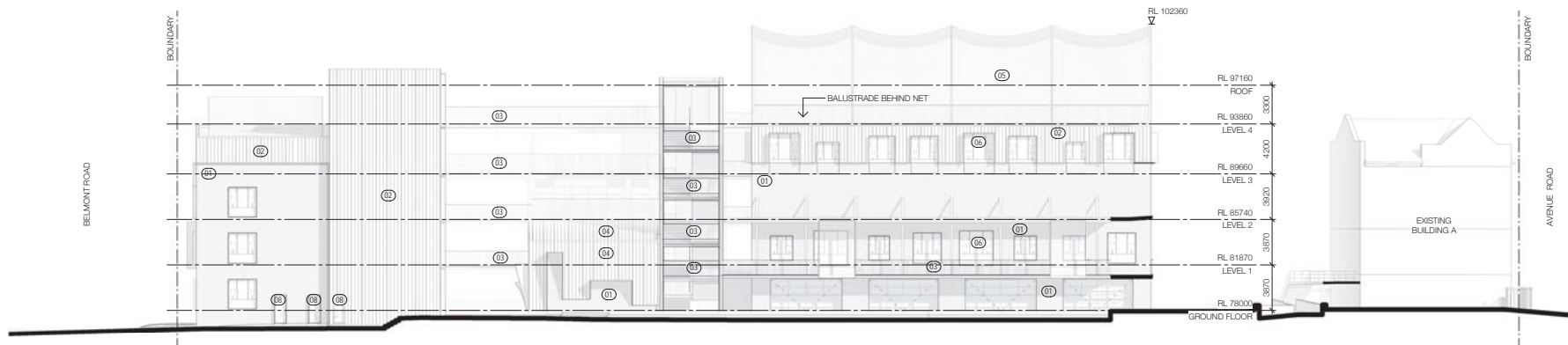
Recent revision history			Date
#	Status	Description	
1	PRELIMINARY	Issued for TOA Review	17/03/21
2	PRELIMINARY	Issued for TOA	23/03/21
3	PRELIMINARY	Issued for SDA	27/03/21

Notes
Copyright © Woods Bagot 2018
All Rights Reserved
No material may be reproduced without prior permission
Contractor must verify all dimensions on site before commencing work or preparing shop drawings.
Do not scale drawings.

- 01 DRY PRESSED BRICK
- 02 STANDING SEAM
- 03 METAL CLADDING
- 04 GALVANISED METAL BALUSTRADE
- 05 RED STANDING SEAM
- 06 METAL CLADDING
- 07 MESH
- 08 GLAZING
- 09 PRE-FINISHED COLOURED
- 10 OFC CLADDING
- 11 PRE-FINISHED COLOURED METAL



1 SOUTH ELEVATION



2 WEST ELEVATION

Project
MOSMAN HIGH SCHOOL

Client
SCHOOL INFRASTRUCTURE NSW

Issued

MULTIPLEX
W-B™
WOODS BAGOT

Project number	Scale	Sheet size	Scale
121468	25mm	A1	1:200
Checked CS	Approved GS		

Sheet title

ELEVATIONS - SOUTHWEST

Sheet number	Revision
SSD-3203	3
Status	PRELIMINARY

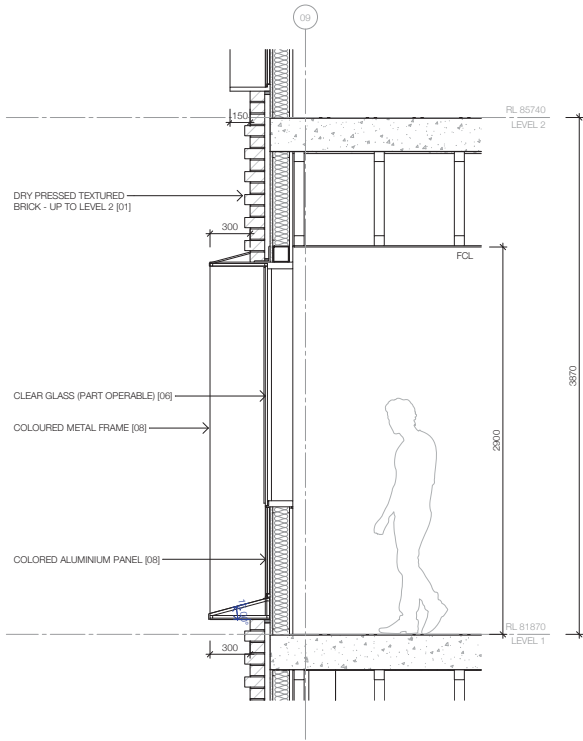


Planning,
Industry &
Environment

Issued under the Environmental Planning and Assessment Act 1979

Approved Application: SSD-10465 Signed: JMC

Granted on: 6 August 2021 Sheet: 12 of 27



1 FACADE DETAIL
SCALE 1 : 20



Planning,
Industry &
Environment

Issued under the Environmental Planning and Assessment Act 1979

Approved Application: SSD-10465 Signed: *JMC*
Granted on: 6 August 2021 Sheet: 13 of 27

Recent revision history			Date
#	Status	Description	
1	PRELIMINARY	Issued for TOA Review	17/03/21
2	PRELIMINARY	Issued for TOA	23/03/21
3	PRELIMINARY	Issued for SDA	27/03/21

Notes
Copyright © Woods Bagot 2018
All Rights Reserved
No material may be reproduced without prior permission
Contractor must verify all dimensions on site before commencing work or preparing shop drawings.
Do not scale drawings.

- 01 DRY PRESSED BRICK
- 02 STANDING SEAM METAL CLADDING
- 03 GALVANISED METAL BALUSTRADE
- 04 RED STANDING SEAM METAL CLADDING
- 05 MESH
- 06 GLAZING
- 07 PRE-FINISHED COLOURED OFC CLADDING
- 08 PRE-FINISHED COLOURED METAL

Project
MOSMAN HIGH SCHOOL

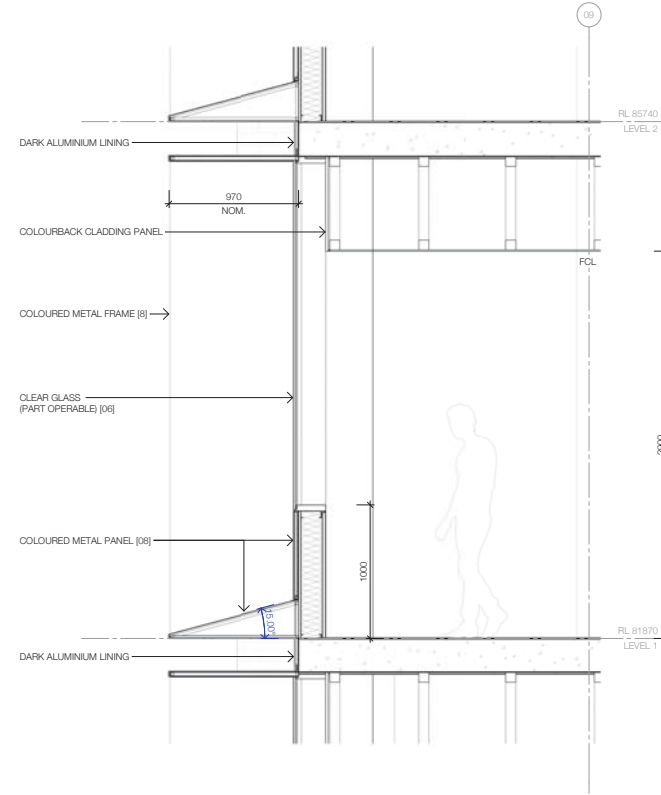
Client
SCHOOL INFRASTRUCTURE NSW

Issued

MULTIPLEX
W-B™
WOODS BAGOT

Project number	Size check	Sheet size	Scale
121468	25mm	A1	As Indicated
Checked CS	Approved GS		

Sheet title	
FACADE DETAIL 1	
Sheet number	Revision
SSD-5201	3
Status	PRELIMINARY



1 FACADE DETAIL
SCALE 1:20



Planning,
Industry &
Environment

Issued under the Environmental Planning and Assessment Act 1979

Approved Application: SSD-10465

Signed: JML

Granted on: 6 August 2021

Sheet: 14 of 27

Recent revision history			Date
#	Status	Description	
1	PRELIMINARY	Issued for TOA Review	13/03/21
2	PRELIMINARY	Issued for TOA	23/03/21
3	PRELIMINARY	Issued for SCIA	23/03/21

Notes
Copyright © Woods Bagot 2018
All Rights Reserved
No material may be reproduced without prior permission
Contractor must verify all dimensions on site before commencing work or preparing shop drawings.
Do not scale drawings.

- 01 DRY PRESSED BRICK
- 02 STANDING SEAM METAL CLADDING
- 03 GALVANISED METAL BALUSTRADE
- 04 RED STANDING SEAM METAL CLADDING
- 05 MESH
- 06 GLAZING
- 07 PRE-FINISHED COLOURED OFC CLADDING
- 08 PRE-FINISHED COLOURED METAL

Project
MOSMAN HIGH SCHOOL

Client
SCHOOL INFRASTRUCTURE NSW

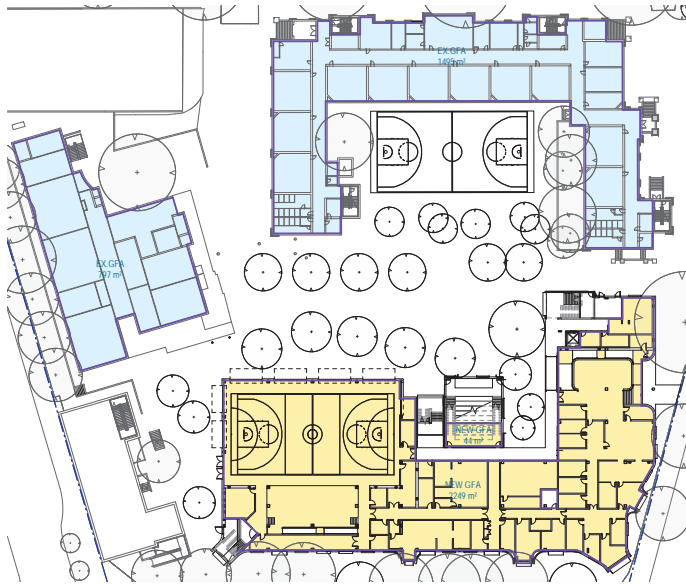
Issued

MULTIPLEX
W-B™
WOODS BAGOT

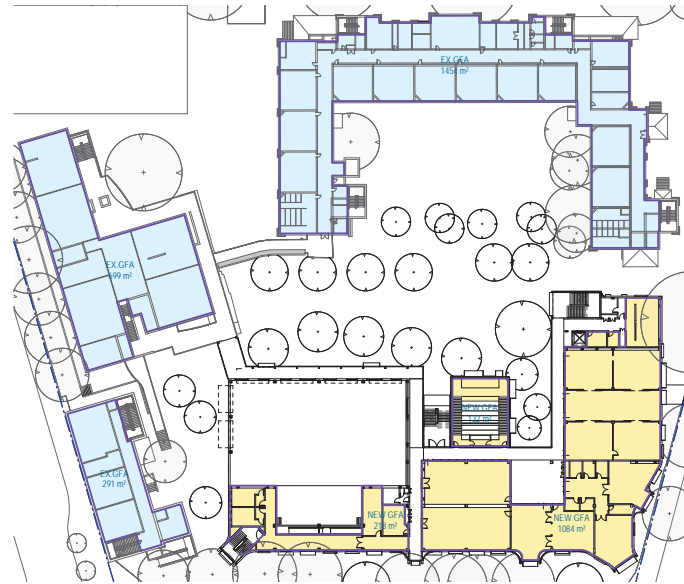
Project number	Size check	Sheet size	Scale
121468	25mm	A1	As Indicated
Checked CS	Approved GS	Sheet size A1	Scale As Indicated

Sheet title
FACADE DETAIL 2

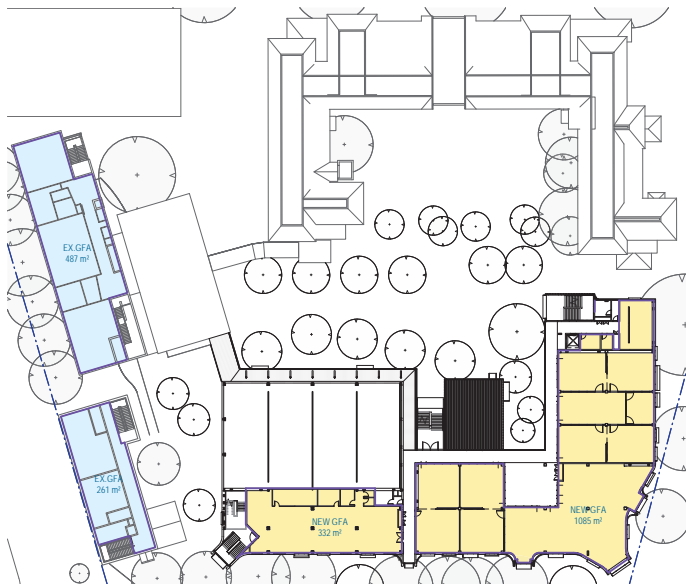
Sheet number	Revision
SSD-5202	3
Status	PRELIMINARY



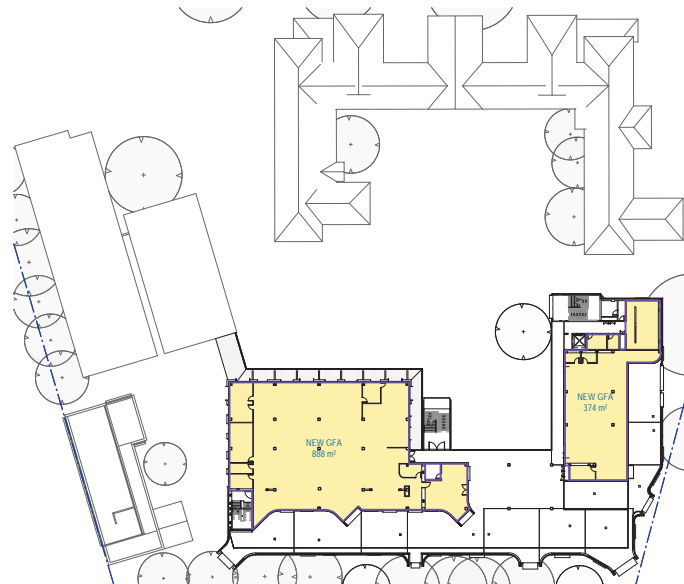
1 GROUND FLOOR



2 LEVEL 1



3 LEVEL 2



4 LEVEL 3

#	Status	Description	Date
1	PRELIMINARY	Issued for TOA Review	13/03/21
2	PRELIMINARY	Issued for TOA	23/03/21
3	PRELIMINARY	Issued for SDA	23/03/21

Notes
Copyright © Woods Bagot 2018
All Rights Reserved
No material may be reproduced without prior permission
Contractor must verify all dimensions on site before commencing work or preparing shop drawings.
Do not scale drawings.

Planning, Industry & Environment

Issued under the Environmental Planning and Assessment Act 1979

Approved Application: SSD-10465 Signed: *JMC*

Granted on: 6 August 2021 Sheet: 15 of 27

AREA SCHEDULE - GFA		
Name	Level	Area
EX. GFA	GROUND FLOOR	2292 m ²
EX. GFA	LEVEL 1	2444 m ²
EX. GFA	LEVEL 2	747 m ²
NEW GFA	GROUND FLOOR	2294 m ²
NEW GFA	LEVEL 1	1434 m ²
NEW GFA	LEVEL 2	1417 m ²
NEW GFA	LEVEL 3	1262 m ²
Grand total		11891 m ²

Project
MOSMAN HIGH SCHOOL

Client
SCHOOL INFRASTRUCTURE NSW

Insuit

MULTIPLEX
W-B
WOODS BAGOT

Project number
121468

Scale check
25mm

Checked
CS

Approved
GS

Sheet size
A1

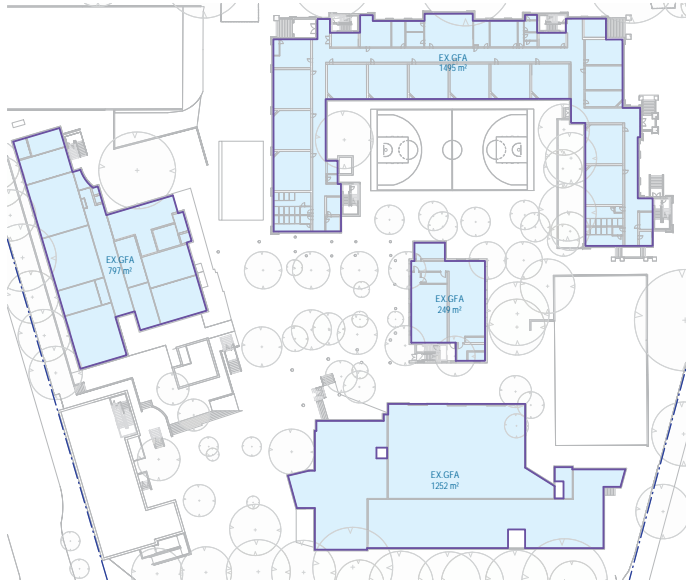
Scale
1:500

Sheet title
GFA PLANS

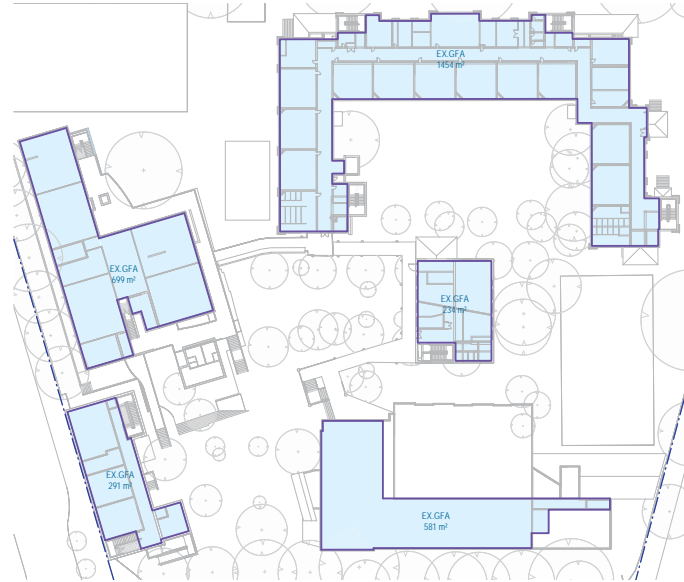
Sheet number
SSD-9101

Status
PRELIMINARY

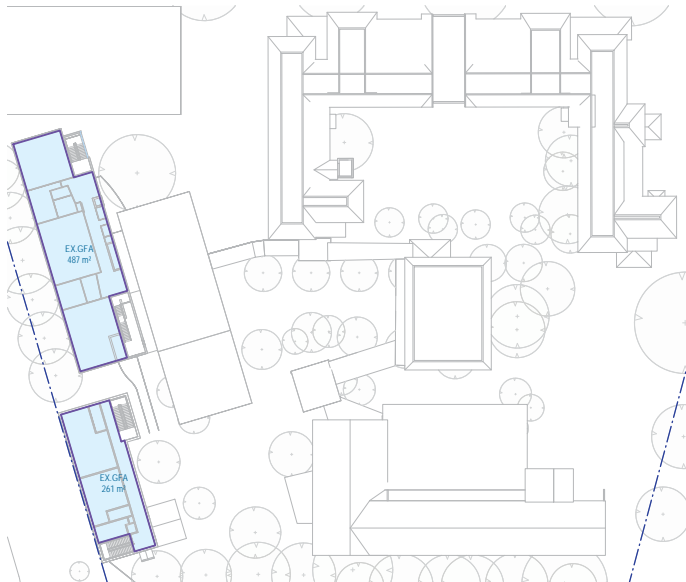
Revision
3



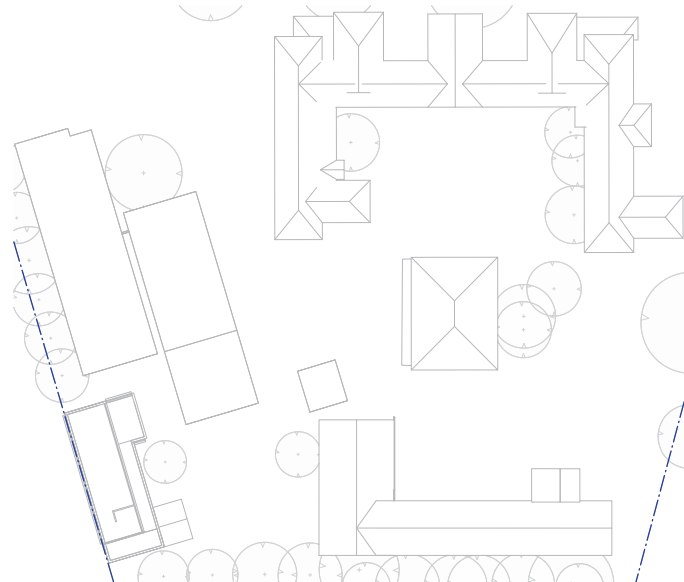
1 GROUND FLOOR



2 LEVEL 1



3 LEVEL 2



4 LEVEL 3

Recent revision history			Date
#	Status	Description	
1	PRELIMINARY	Issued for TOA	23/03/21

Notes
Copyright © Woods Bagot 2018
All Rights Reserved
No material may be reproduced without prior permission
Contractor must verify all dimensions on site before commencing work or preparing shop drawings.
Do not scale drawings.

**Planning,
Industry &
Environment**

Issued under the Environmental Planning and Assessment Act 1979

Approved Application: SSD-10465 Signed: *JML*

Granted on: 6 August 2021 Sheet: 16 of 27

Project
MOSMAN HIGH SCHOOL

Client
SCHOOL INFRASTRUCTURE NSW

Issued

MULTIPLEX
W-B™
WOODS BAGOT

Area Schedule (EX. GFA)		
Name	Level	Area
EX.GFA	GROUND FLOOR	3793 m²
EX.GFA	LEVEL 1	3260 m²
EX.GFA	LEVEL 2	747 m²
Grand total		7800 m²

Project number
121468

Scale check
25mm

Checked
CS

Approved
GS

Sheet size
A1

Scale
1:500

Sheet title
EX. GFA PLANS

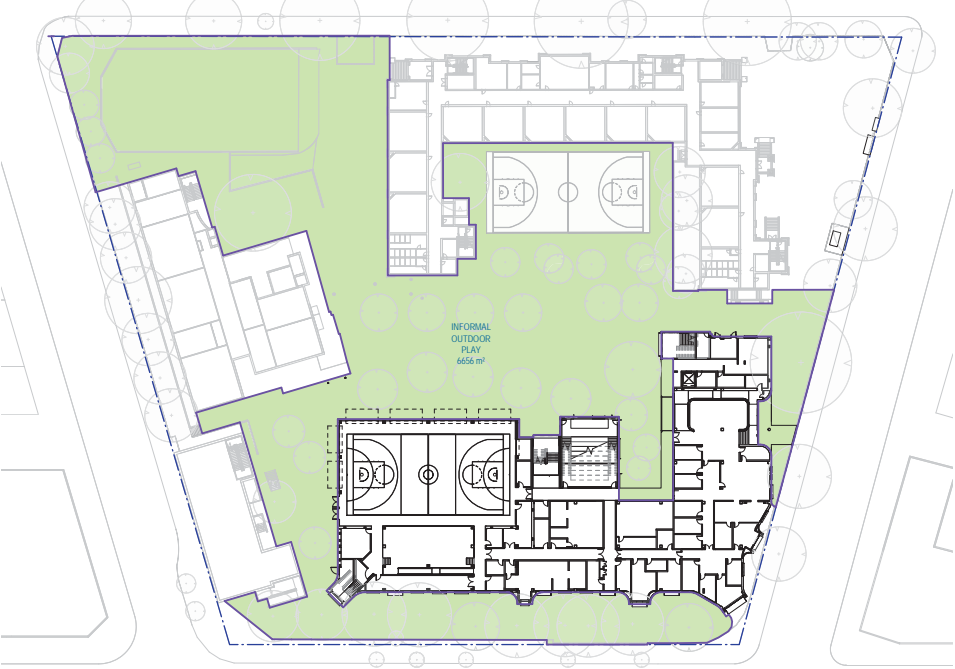
Sheet number
SSD-9102

Revision
1

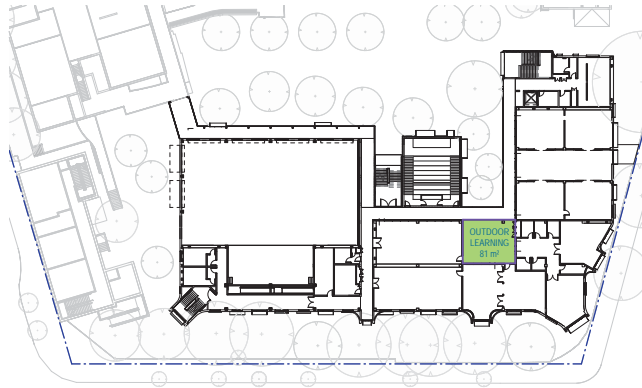
Status
PRELIMINARY

Recent revision history			Date
#	Status	Description	
1	PRELIMINARY	Issued for TOA Review	17/03/21
2	PRELIMINARY	Issued for TOA	23/03/21
3	PRELIMINARY	Issued for SDA	27/03/21

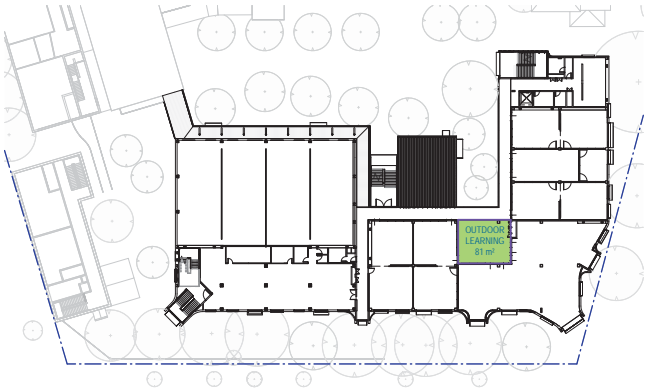
Notes
 Copyright © Woods Bagot 2018
 All Rights Reserved
 No material may be reproduced without prior permission
 Contractor must verify all dimensions on site before commencing work or preparing shop drawings.
 Do not scale drawings.



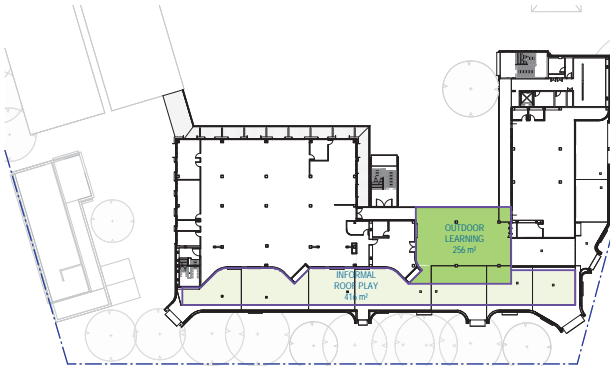
1 GROUND FLOOR



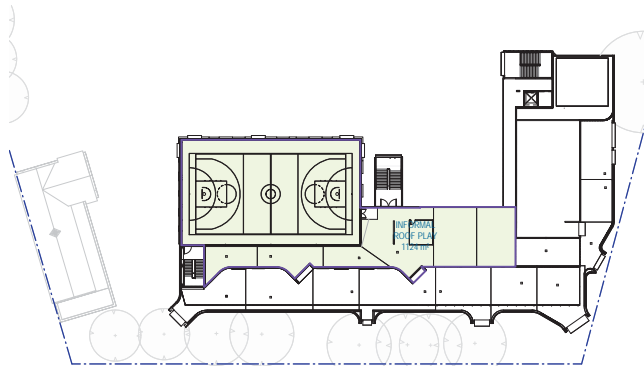
2 LEVEL 1



3 LEVEL 2



4 LEVEL 3



5 LEVEL 4

AREA SCHEDULE - OUTDOOR PLAY		
Level	Name	Area
GROUND FLOOR	INFORMAL OUTDOOR PLAY	6656 m²
LEVEL 1	OUTDOOR LEARNING	81 m²
LEVEL 2	OUTDOOR LEARNING	81 m²
LEVEL 3	OUTDOOR LEARNING	256 m²
LEVEL 3	INFORMAL ROOF PLAY	416 m²
LEVEL 4	INFORMAL ROOF PLAY	1124 m²
Grand total		8612 m²

- OUTDOOR LEARNING SPACE
- INFORMAL OUTDOOR PLAY
- INFORMAL ROOF PLAY



Planning,
Industry &
Environment

Issued under the Environmental Planning and Assessment Act 1979

Approved Application: SSD-10465 Signed JMC
 Granted on: 6 August 2021 Sheet: 17 of 27

Project
MOSMAN HIGH SCHOOL

Client
SCHOOL INFRASTRUCTURE NSW

Issue:

MULTIPLEX
W-B™
 WOODS BAGOT

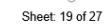
Project number		Size check	
121468		25mm	
Checked	Approved	Sheet size	Scale
CS	GS	A1	1:500

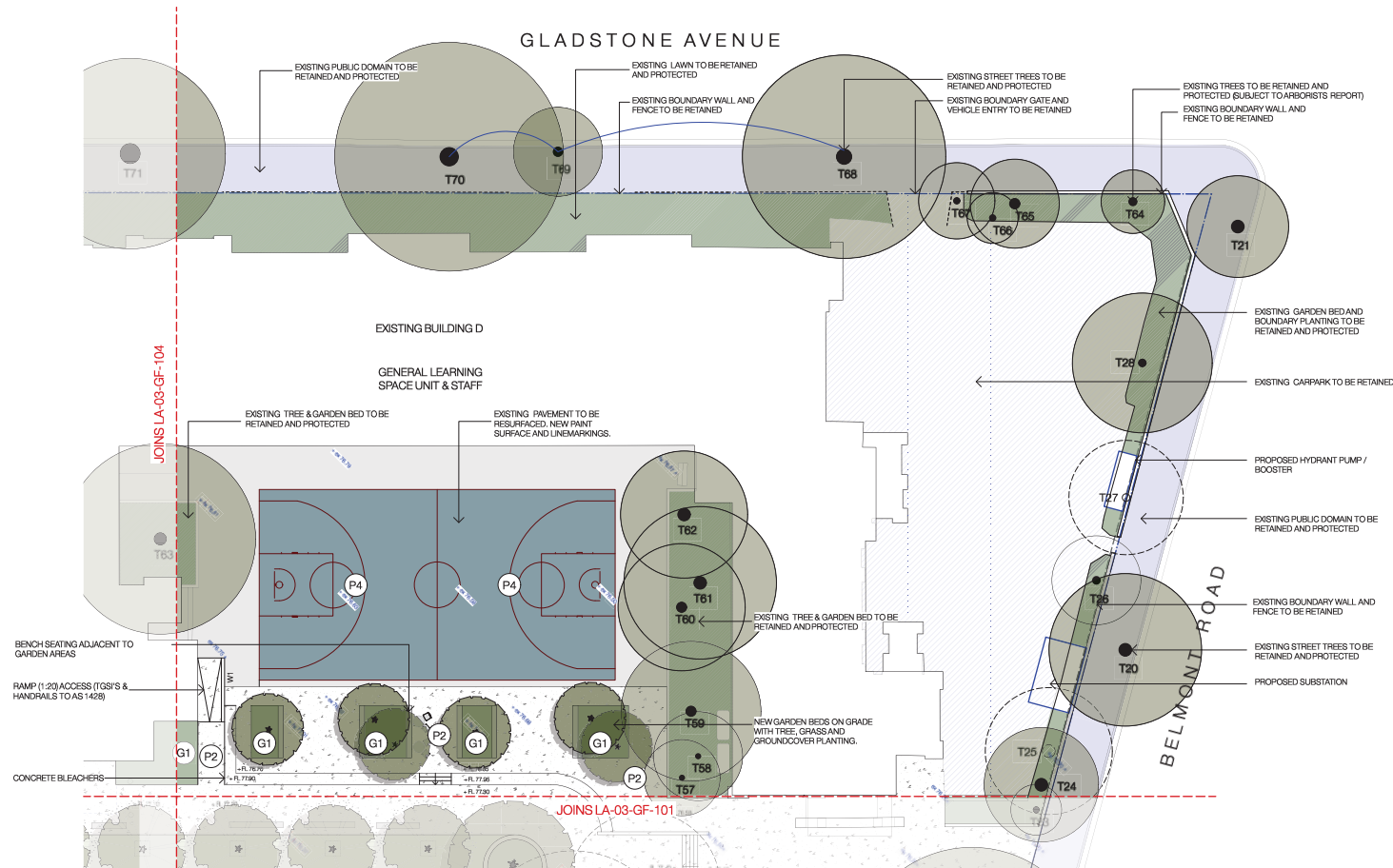
Sheet title

OUTDOOR PLAY AREA PLANS

Sheet number		Revision	
SSD-9103		3	
Status			
PRELIMINARY			

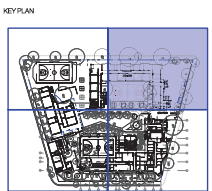
STATUS	
SSEA	





Rev	Description	Date
01	Preliminary SSCA	16.02.21
02	Preliminary SSCA	22.02.21
03	SSCA Issue	15.03.21
04	SSCA Issue	16.03.21

NOTES
Contractor must verify all dimensions on site before commencing work or preparing shop drawings. Do not scale drawings. Resolve discrepancies with Black Beetle before proceeding. Copyright of this drawing and the design executed remain with Black Beetle.



PROJECT
MOSMAN HIGH SCHOOL
Military Road, Mosman

CLIENT
SCHOOLS INFRASTRUCTURE NSW

ISSUER
MULTIPLEX

black beetle
Landscape Architecture and Design
Black Beetle Pty Ltd
Level 01 | 107/1 Pittwater Place, Collaroy NSW 2057
Tel: 02 9252 10416
email: blackbeetle@blackbeetle.com.au

CHECKED	APPROVED	SCALE
IK	GB/K	1:200 @ A1

SHEET TITLE
General Arrangement Plan
Sheet 03

SHEET NO	REVISION
LA-03-LD-103	04
STATUS	SSDA

Planning, Industry & Environment

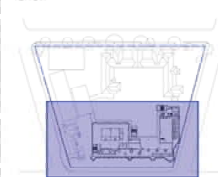
Issued under the Environmental Planning and Assessment Act 1979

Approved Application: SSD-10465 Signed: *JMC*

Granted on: 6 August 2021 Sheet: 20 of 27

NC

1:200 © A



CLIENT

SOLAR

Level 01 | 1073 Pittwater Road, Cullary NSW 2087
Tel 0422 104 416
email: blackbeetle@blackbeetle.com.au

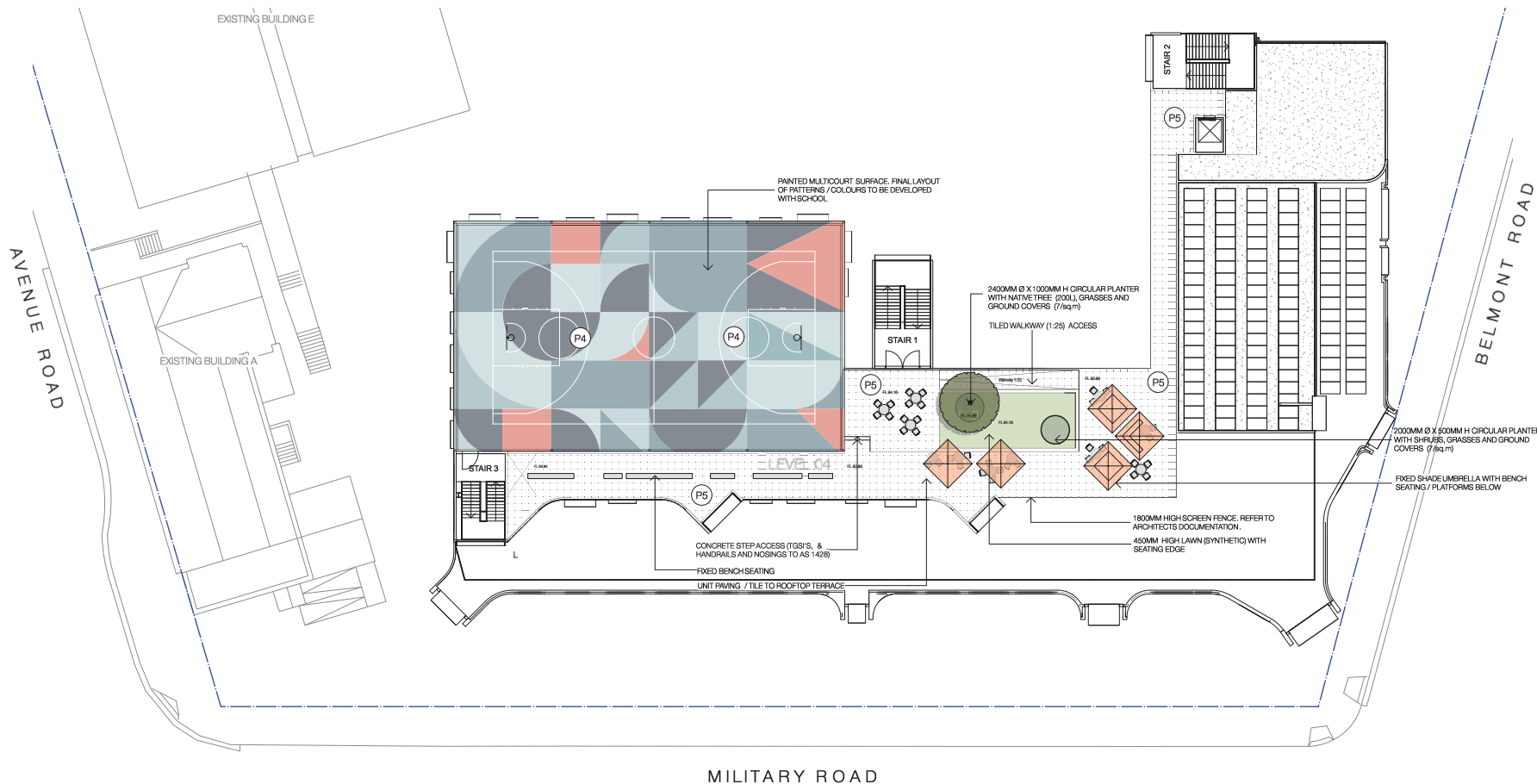
SHEET TITLE

SHEET NO. LA-03-03-105	REVISION 00
---------------------------	----------------

STATUS	
SSDA	

Original Sheet Size A1: 841 x 594

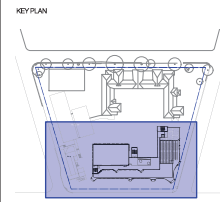




Rev	Description	Date
01	Preliminary SSCA	16.02.21
02	Preliminary SSCA	22.02.21
03	SSCA Issue	16.03.21

NOTES
Contractor must verify all dimensions on site before commencing work or preparing shop drawings. Do not scale drawings. Resolve discrepancies with Black Beetle before proceeding. Copyright of this drawing and the design specified remain vested in Black Beetle.

1:200 @ A1
0 2 4 8 12 16m



PROJECT
MOSMAN HIGH SCHOOL
Military Road, Mosman

CLIENT
SCHOOLS INFRASTRUCTURE NSW

ISSUED
black beetle
Landscape Architecture and Design
Black Beetle Pty Ltd
Level 01 | 1079 Pittwater Road, Cullyback NSW 2007
Tel: 0422 104 416
email: blackbeetle@blackbeetle.com.au



**Planning,
Industry &
Environment**

Issued under the Environmental Planning and Assessment Act 1979

Approved Application: SSD-10465

Signed: *JMC*

Granted on: 6 August 2021

Sheet: 23 of 27

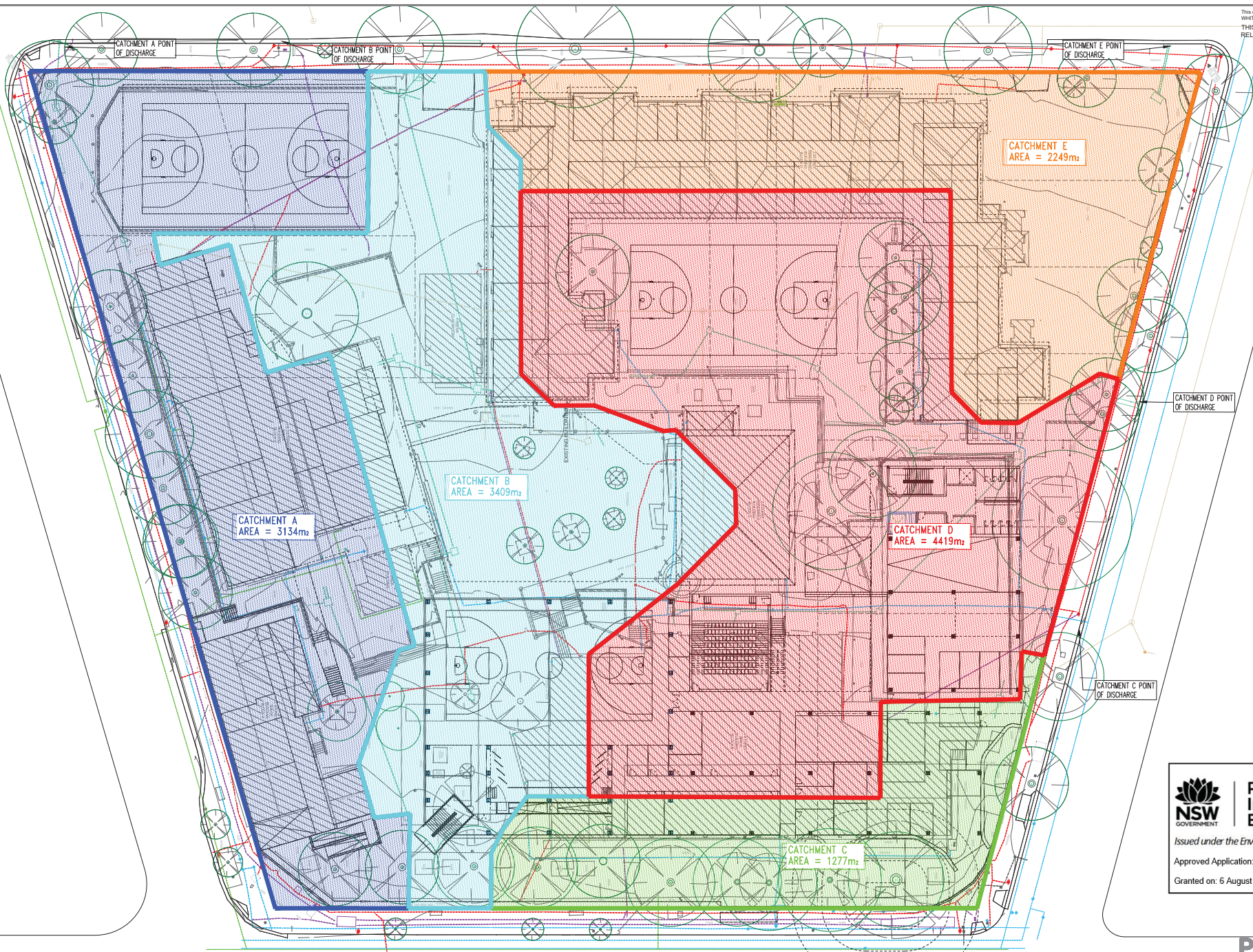
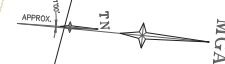
CHECKED	APPROVED	SCALE
IK	GB/K	1:200 @ A1

SHEET TITLE
Level 04
General Arrangement Plan
Sheet 01

SHEETING	REVISION
LA-03-03-106	03
STATUS	
SSDA	

[illegible]

<div><div>012345678910</div><div></div></div>																				<div>Architect</div> <div>WOODS BAGOT</div> <div>2160 CARRINGTON STREET, NSW 200</div>										<div>Engineer</div> <div><div>TTW</div><div>Structural Civil Traffic Façade</div></div> <div>612 9439 7286 48 Chandos Street St Leonards NSW 2055</div>										<div>Project</div> <div>MOSMAN HIGH SCHOOL UPGRADE</div> <div>745 MILITARY ROAD, MOSMAN, NSW 2088</div>										<div>Sheet Subject</div> <div>DETAIL SHEET 1</div>										<div>Scale : A1</div> <div>100</div> <div>Drawn</div> <div>JW</div> <div>Authorised</div> <div>SB</div>									
<div>P3 ISSUE FOR APPROVAL</div> <div>AW</div> <div>JW</div> <div>25.02.21</div>										<div>P2 ISSUE FOR APPROVAL</div> <div>AW</div> <div>JW</div> <div>16.02.21</div>										<div>P1 PRELIMINARY</div> <div>AW</div> <div>JW</div> <div>09.02.21</div>																																																	
<div>Rev</div> <div>Drawn</div> <div>Date</div> <div>Rev</div> <div>Description</div> <div>Rev</div> <div>Date</div> <div>Rev</div> <div>Description</div> <div>Rev</div> <div>Date</div>																																																																					
<div>Client</div> <div>MULTIPLEX AUSTRALASIA</div> <div>22/135 KINGS STREET, NSW 200</div>																																																																					





**Planning,
Industry &
Environment**

Issued under the Environmental Planning and Assessment Act 1979

Approved Application: SSD-10465 Signed: *JML*

Granted on: 6 August 2021 Sheet: 26 of 27

PRELIMINARY
NOT TO BE USED
FOR CONSTRUCTION

A1												FOR CONSTRUCTION											
												Scale: A1 1:250											
												Drawing No 201635											
												Revision P2											
P2 ISSUE FOR APPROVAL AH JW 16.02.21												Job No CV-82-A-008											
P1 PRELIMINARY AA JW 09.02.21												Revision P2											
Rev Description Eng Draft Date Rev Description Eng Draft Date												Plot File Created: Feb 16, 2021 - 2:41pm											

Architect		Engineer		Project		Sheet Subject	
WOODS BAGOT		 Structural Civil Traffic Façade		MOSMAN HIGH SCHOOL UPGRADE		CATCHMENT PLAN - PRE DEVELOPMENT	
2/60 CARRINGTON STREET, NSW 200		B12 9439 7288 48 Chandos Street St Leonards NSW 2065		745 MILITARY ROAD, MOSMAN , NSW 2088			
Client							
MULTIPLEX AUSTRALASIA							
22/135 KINGS STREET, NSW 200							



Sheet: 27 of 27

Scale : A1	Drawn	Authorised
1:250	JW	SB
Job No	Drawing No	Revision
201635	CV-82-A-009	P2
Plot File Created: Feb 16, 2021 - 2:41pm		

Sheet Subject	CATCHMENT PLAN - POST DEVELOPMENT
---------------	--------------------------------------

CATCHMENT PLAN - POST DEVELOPMENT